

**COMPENSATED
DENSITY/NEUTRON
PE/LOG**

Company	BEAR PETROLEUM, LLC	Location:	API #: 15-145-21830-0000	Other Services DIL/MEL SONIC
Well	STEJSKAL #1	Permanent Datum	GROUND LEVEL Elevation 2106	Elevation
Field	STEFFEN SOUTH	Log Measured From	KELLY BUSHING 6' A.G.L	K.B. 2112
County	PAWNEE	Drilling Measured From	KELLY BUSHING	D.F. 2110
				G.L. 2106

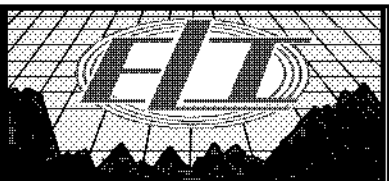
Date	03/18/18
Run Number	ONE
Depth Driller	4546
Depth Logger	4549
Bottom Logged Interval	4525
Top Log Interval	2000
Casing Driller	8 5/8" @ 1247
Casing Logger	1247
Bit Size	7 7/8
Type Fluid in Hole	CHEMICAL MUD
Density / Viscosity	9.2/53
PH / Fluid Loss	9.5/9.8
Source of Sample	FLOWLINE
Rm @ Meas. Temp	.40 @ 68F
Rmf @ Meas. Temp	.30 @ 68F
Rmc @ Meas. Temp	.48 @ 68F
Source of Rmf / Rmc	MEASUREMENT
Rm @ BHT	.21 @ 121F
Time Circulation Stopped	2 HOURS
Time Logger on Bottom	///
Maximum Recorded Temperature	121F
Equipment Number	3802
Location	HAYS, KANSAS
Recorded By	GUS PFANENSTIEL
Witnessed By	ROD ANDERSON

>>> Fold Here >>>

All interpretations are opinions based on inferences from electrical or other measurements and we cannot and do not guarantee the accuracy or correctness of any interpretation, and we shall not, except in the case of gross or willful negligence on our part, be liable or responsible for any loss, costs, damages, or expenses incurred or sustained by anyone resulting from any interpretation made by any of our officers, agents or employees. These interpretations are also subject to our general terms and conditions set out in our current Price Schedule.

Comments

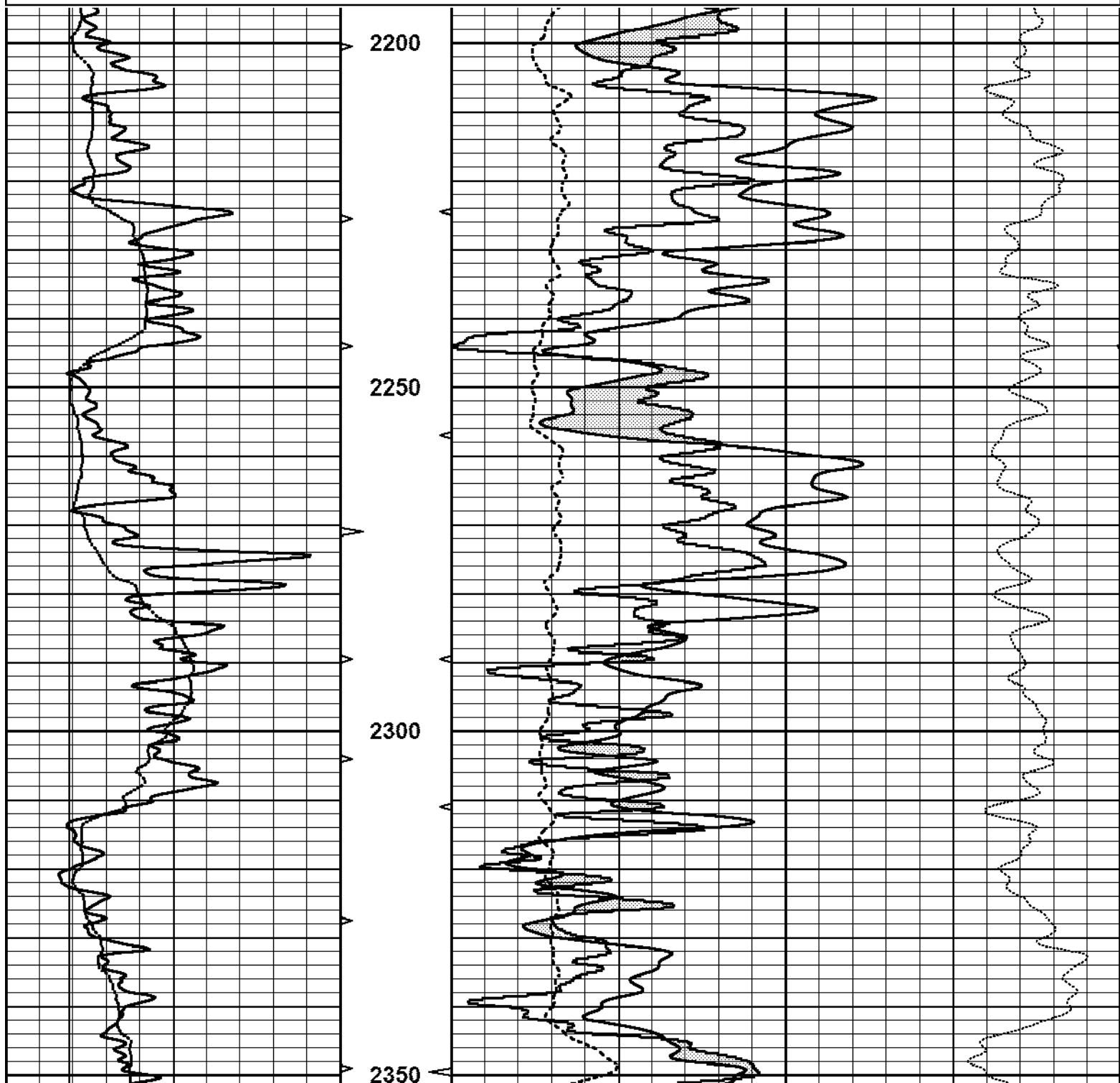
THANK YOU FOR USING ELI WIRELINE SERVICES, HAYS, KS. (785) 628-6395
 DIRECTIONS
 BURDETT GO TO RD. 345 NORTH 1 MILE,
 1/2 EAST, 3/4 NORTH, WEST INTO.

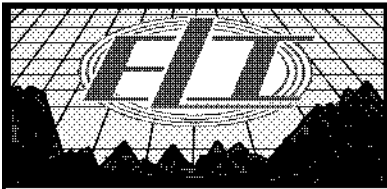
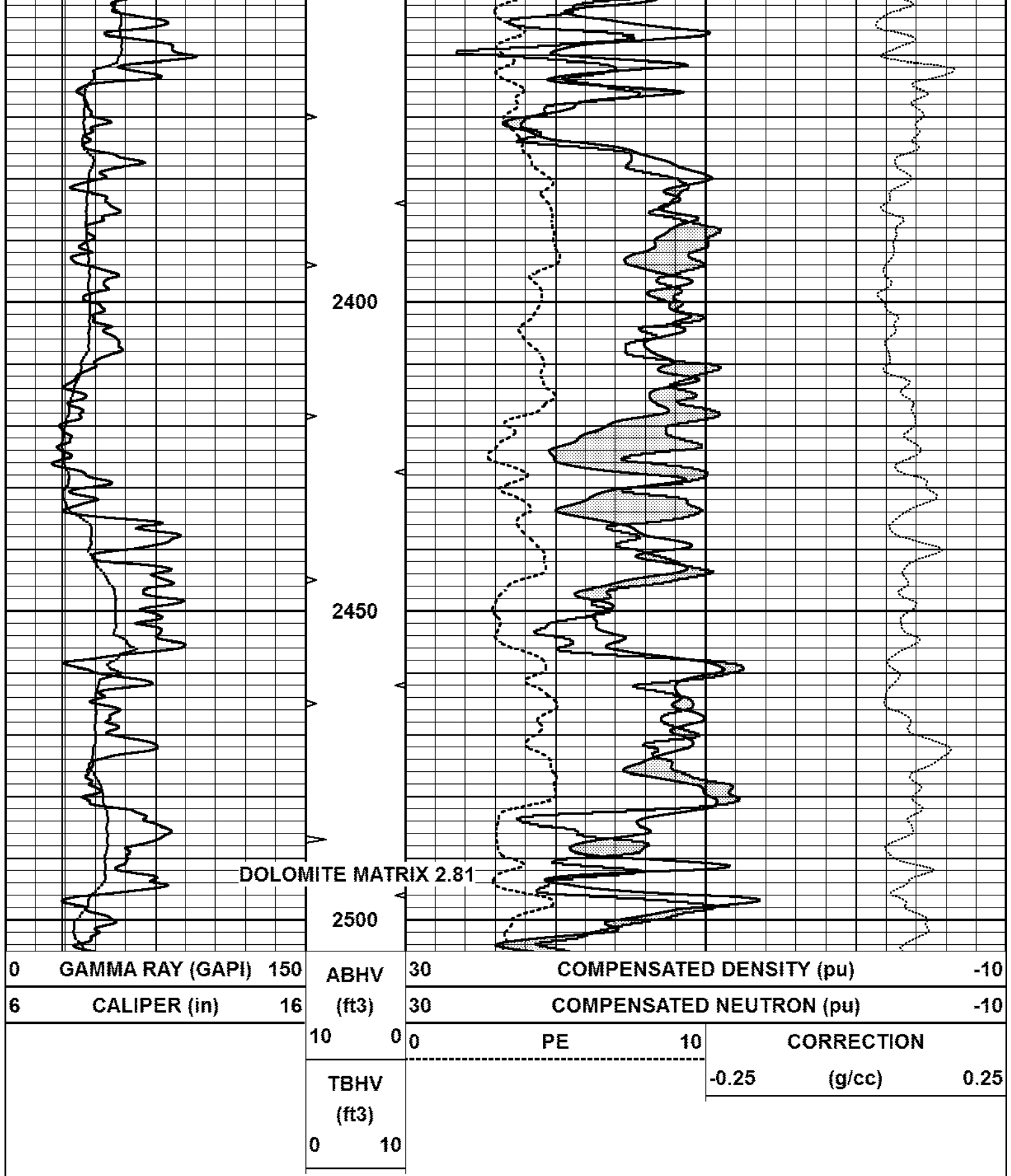


DOLOMITE MATRIX 2.81

Database File 2373pe.db
 Dataset Pathname pass3DOL
 Presentation Format _ldt_neu
 Dataset Creation Sun Mar 18 10:11:38 2018
 Charted by Depth in Feet scaled 1:240

0	GAMMA RAY (GAPI)	150	ABHV	30	COMPENSATED DENSITY (pu)	-10
6	CALIPER (in)	16	(ft3)	30	COMPENSATED NEUTRON (pu)	-10
			10 0	0	PE	10
			TBHV			
			(ft3)			
			0 10		-0.25	0.25
					(g/cc)	
					CORRECTION	

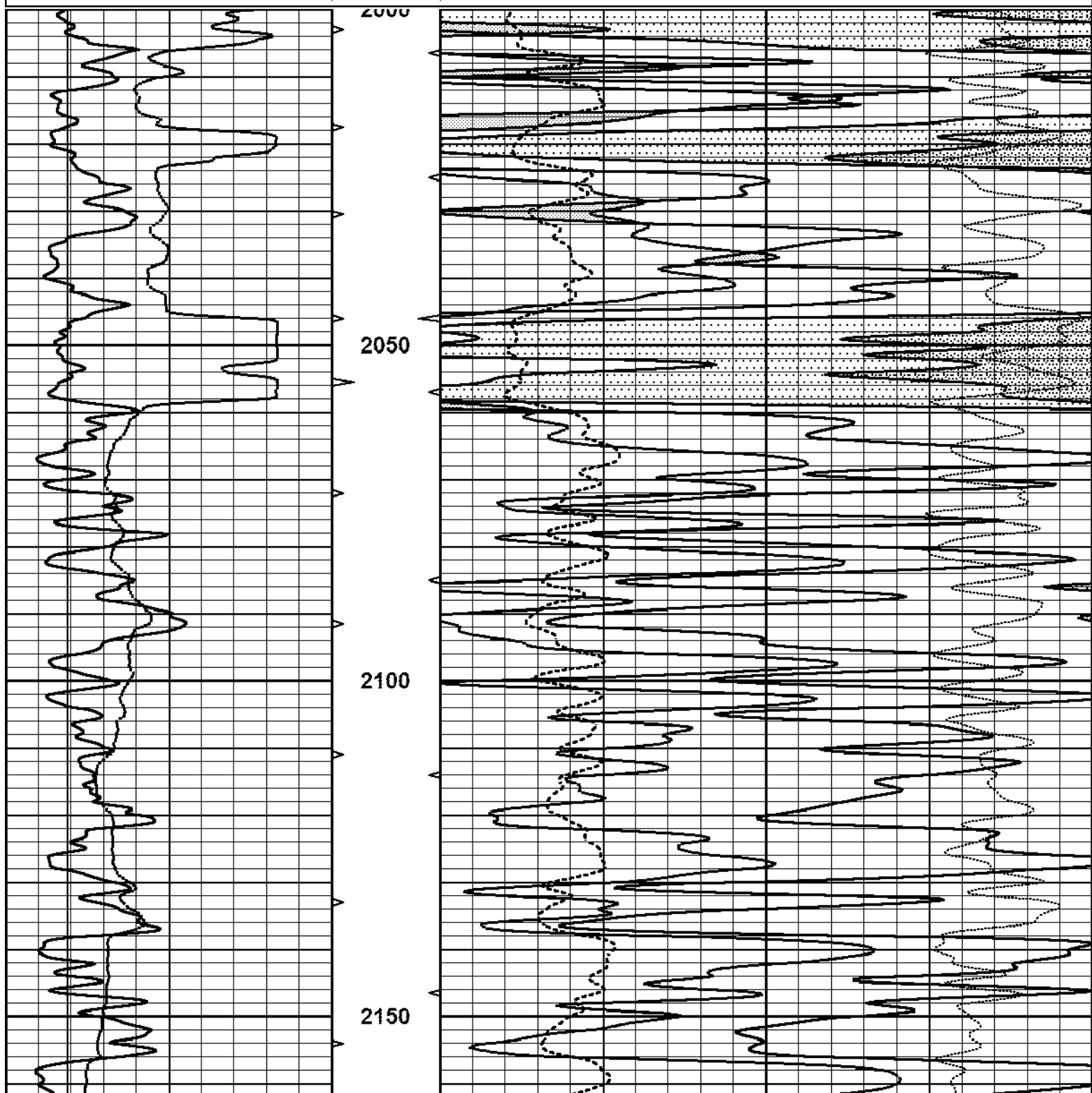


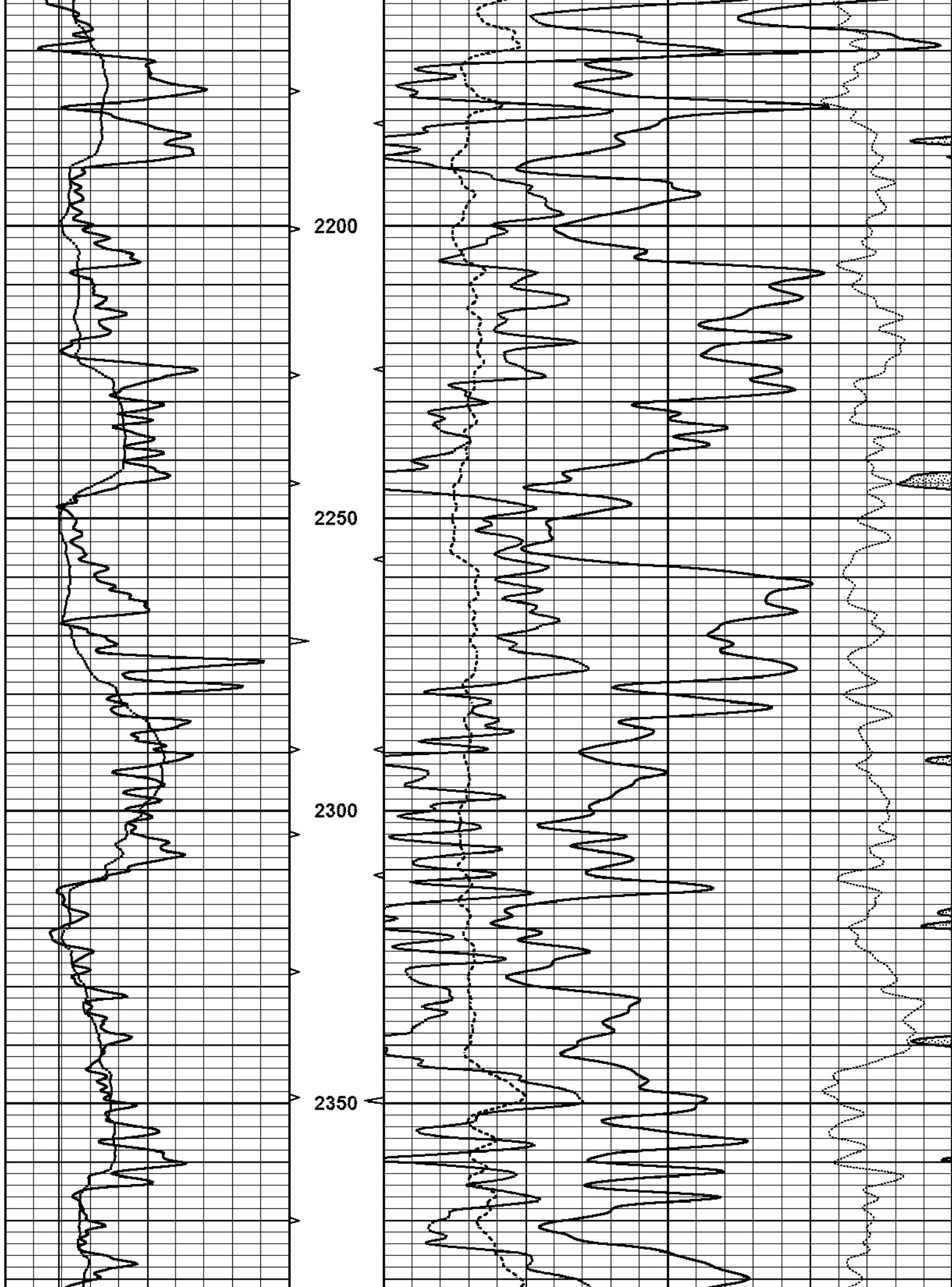


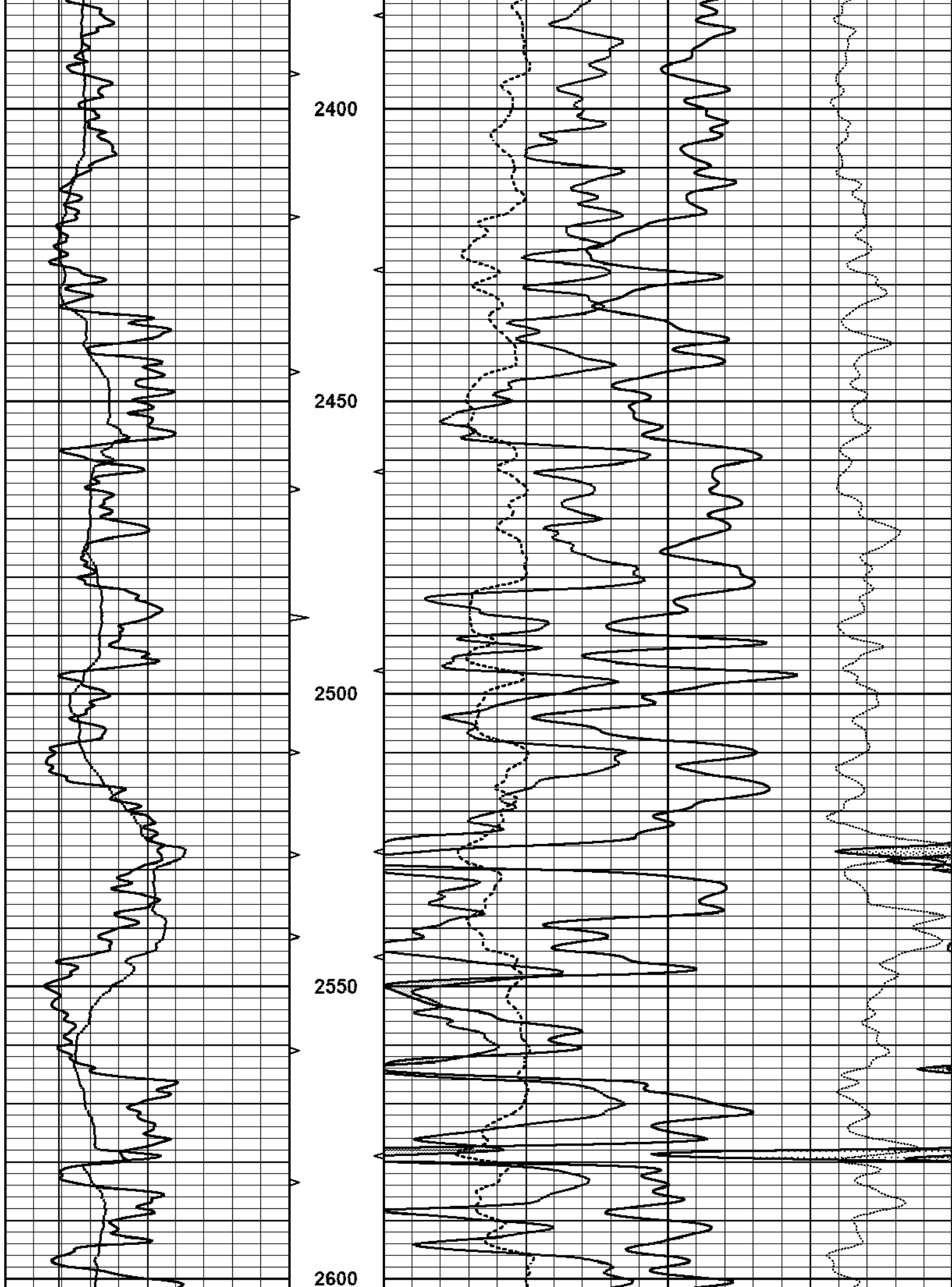
MAIN PASS

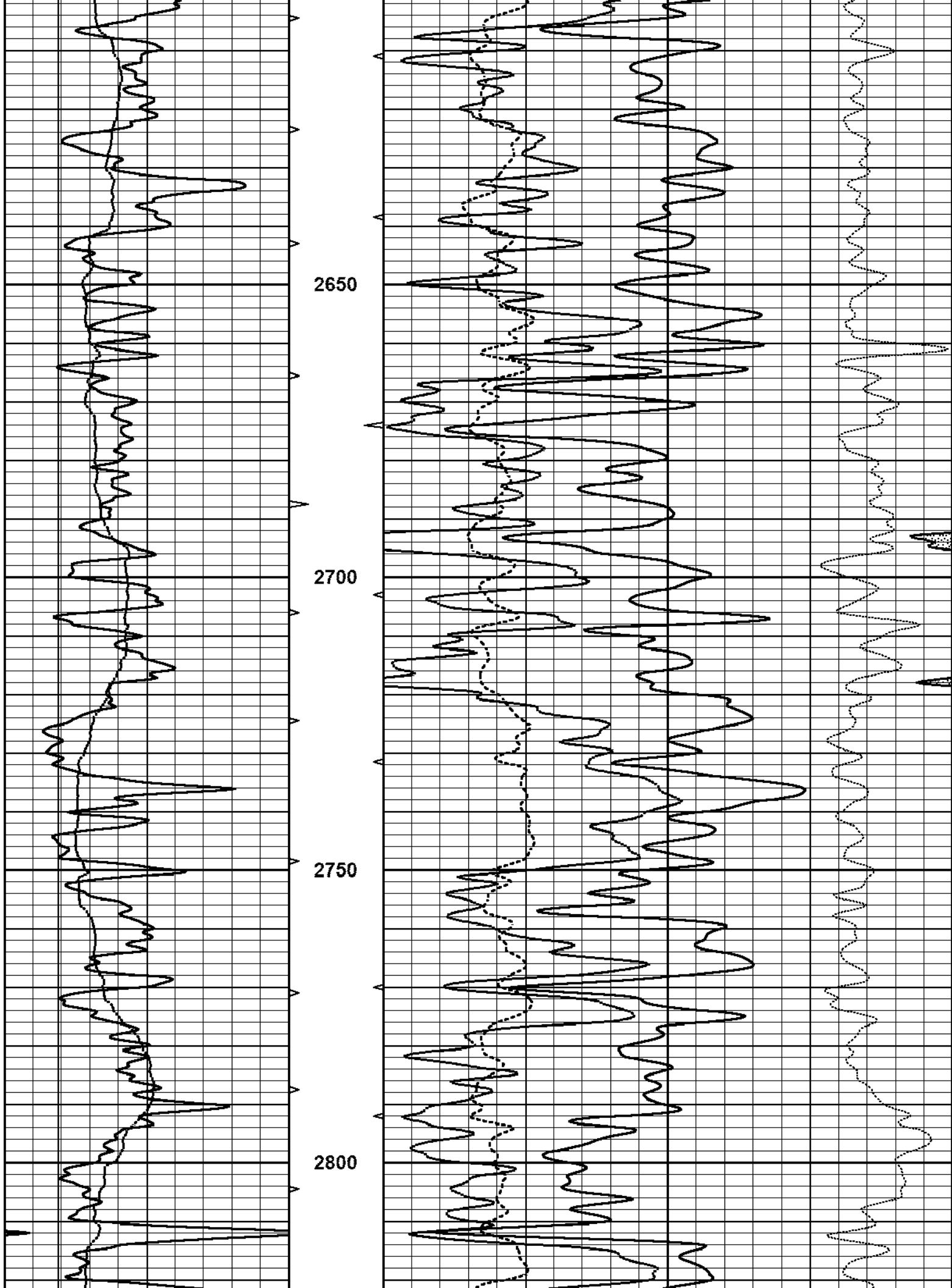
Database File 2373pe.db
 Dataset Pathname pass3MAIN
 Presentation Format _ldt_neu
 Dataset Creation Sun Mar 18 09:53:16 2018
 Charted by Depth in Feet scaled 1:240

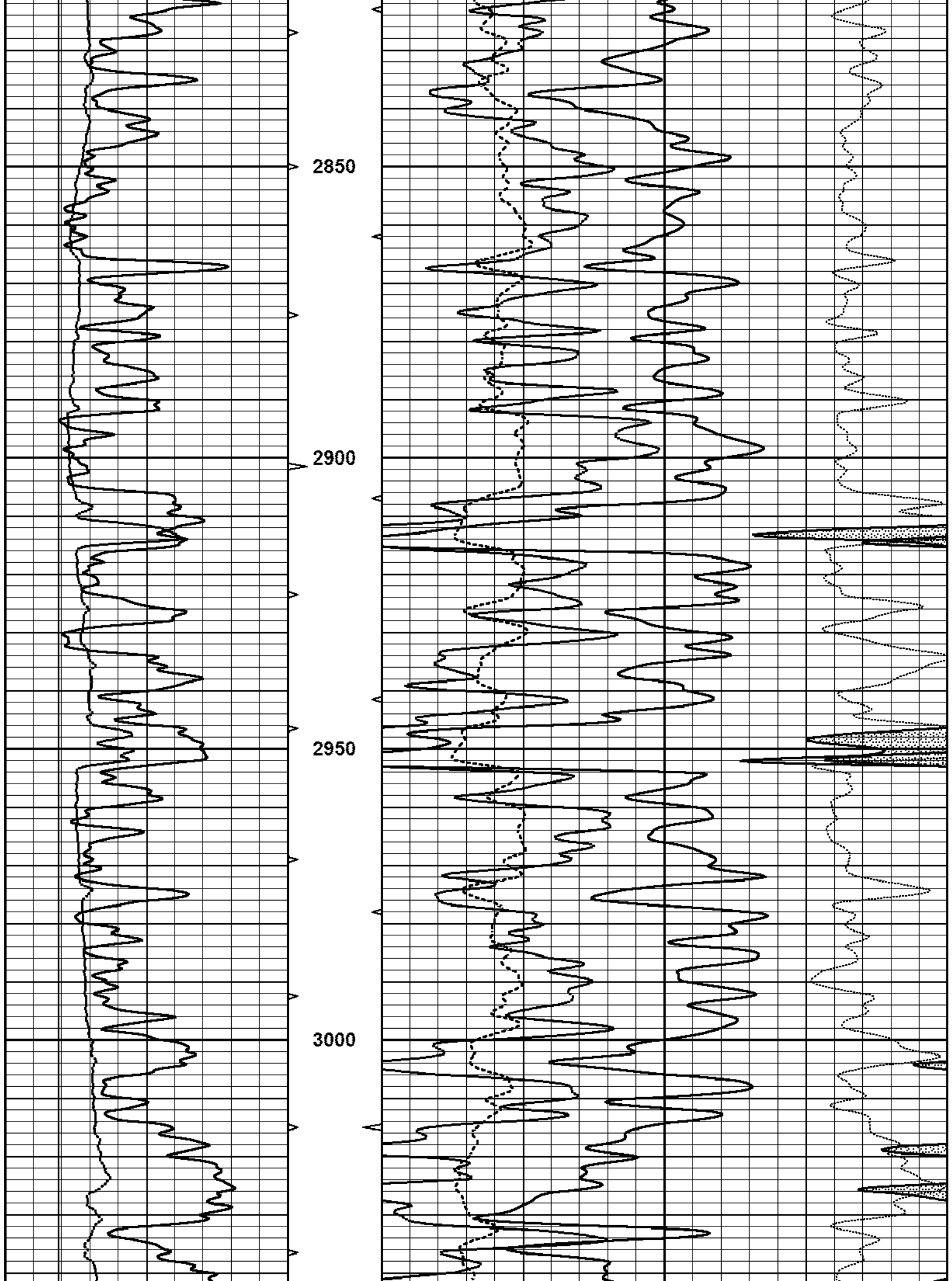
0	GAMMA RAY (GAPI)	150	ABHV	30	COMPENSATED DENSITY (pu)	-10
6	CALIPER (in)	16	(ft3)	30	COMPENSATED NEUTRON (pu)	-10
			10	0	PE	10
			TBHV		CORRECTION	
			(ft3)		-0.25	(g/cc) 0.25
			0	10		

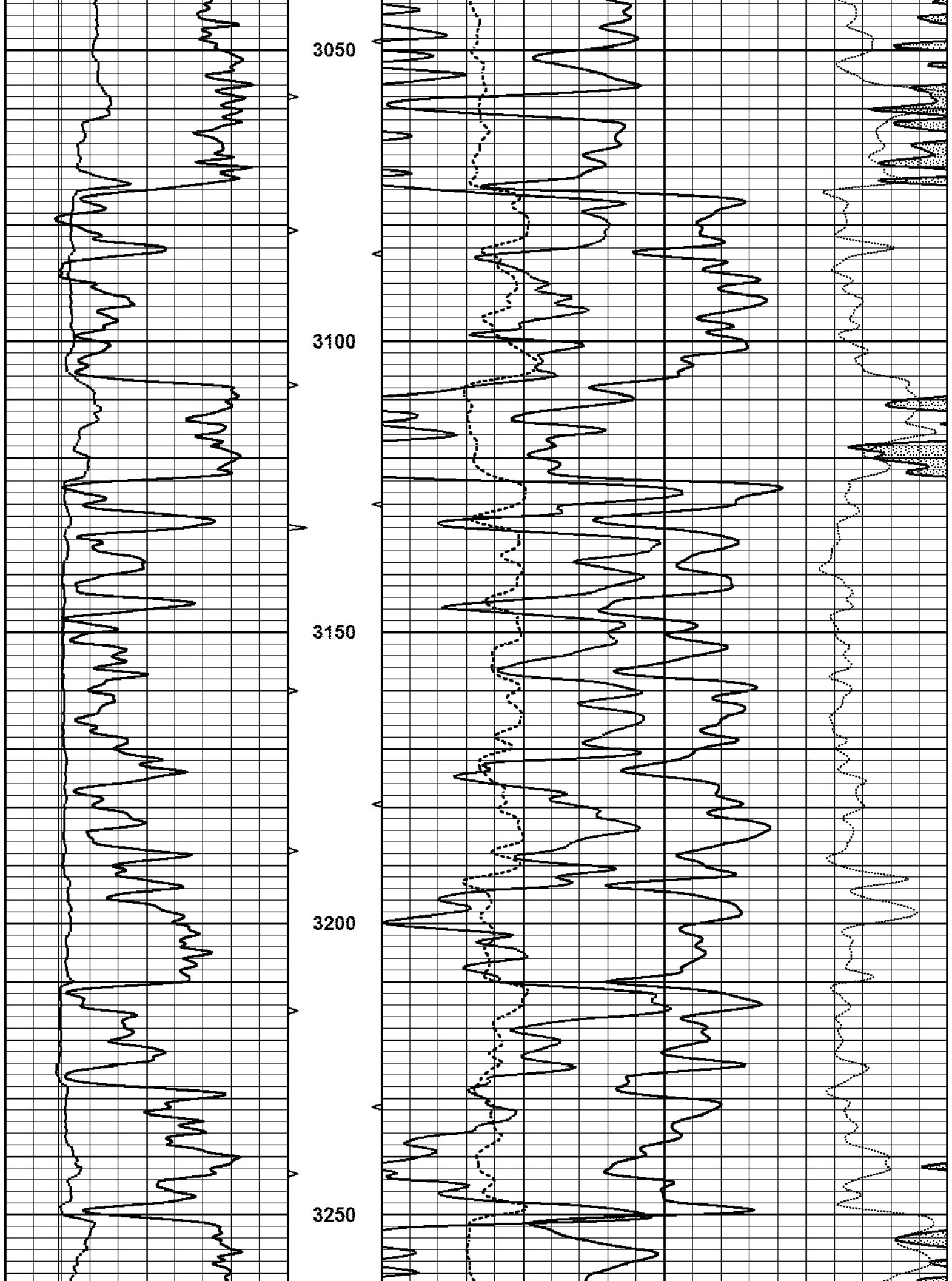


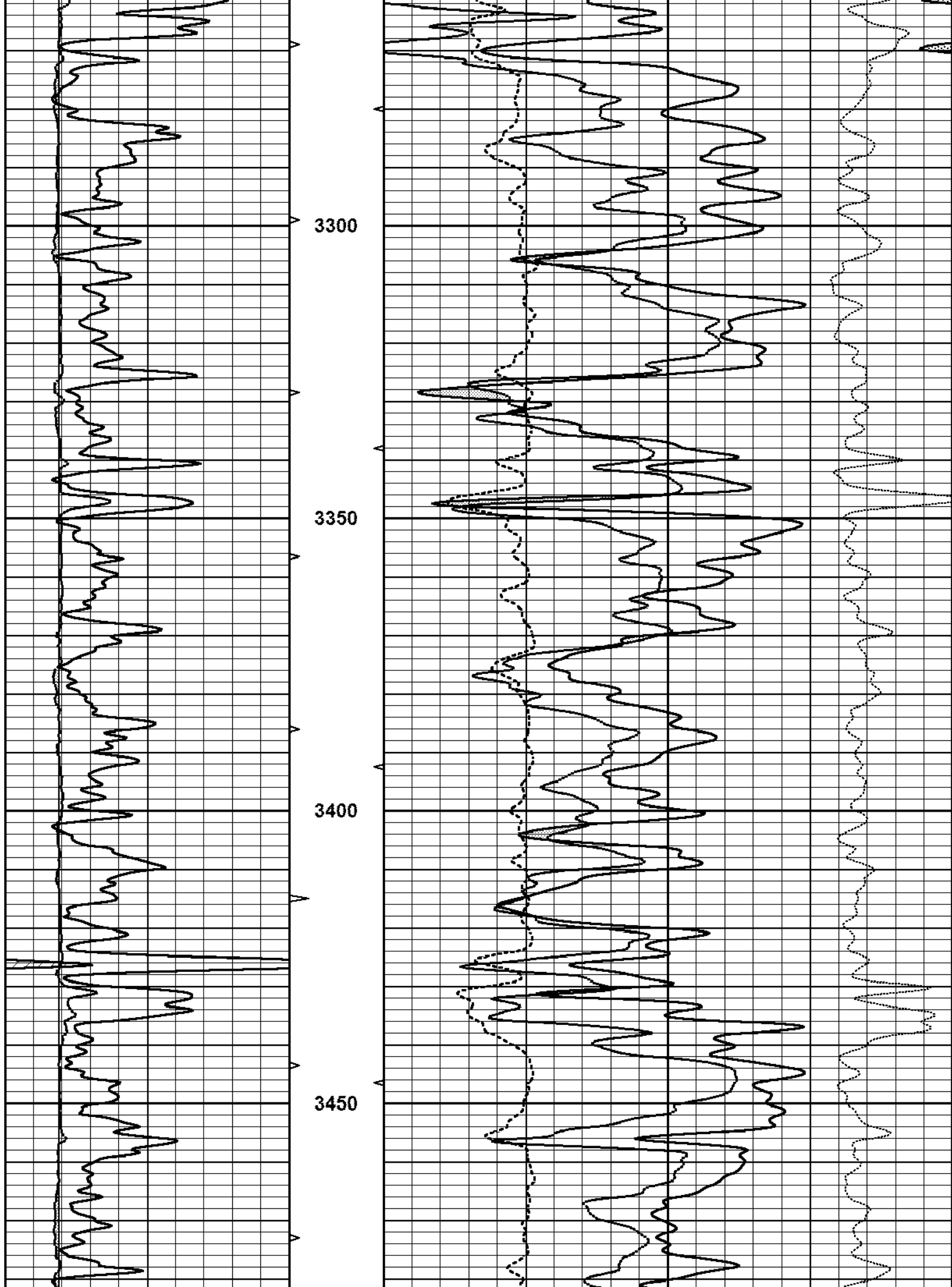


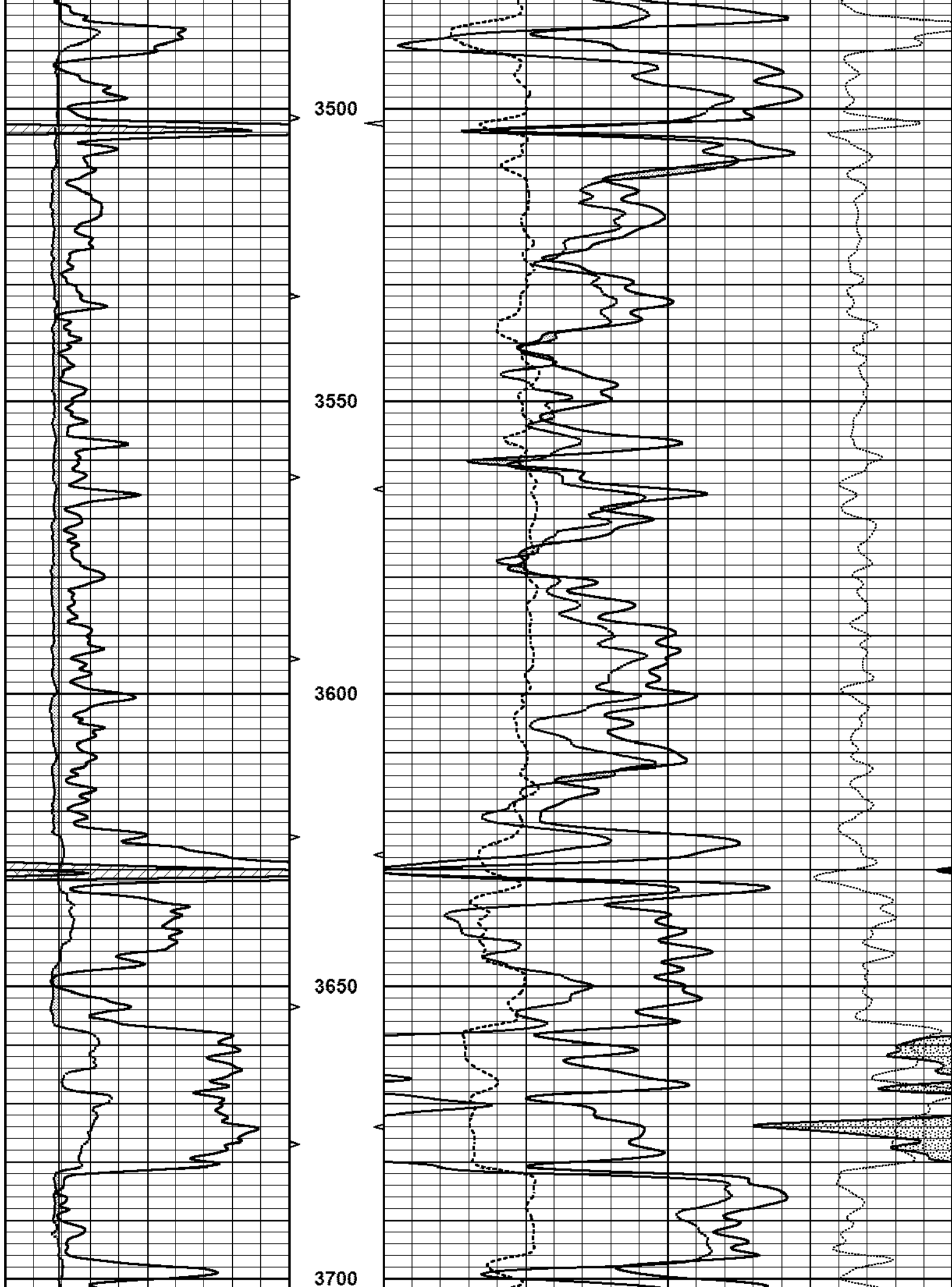


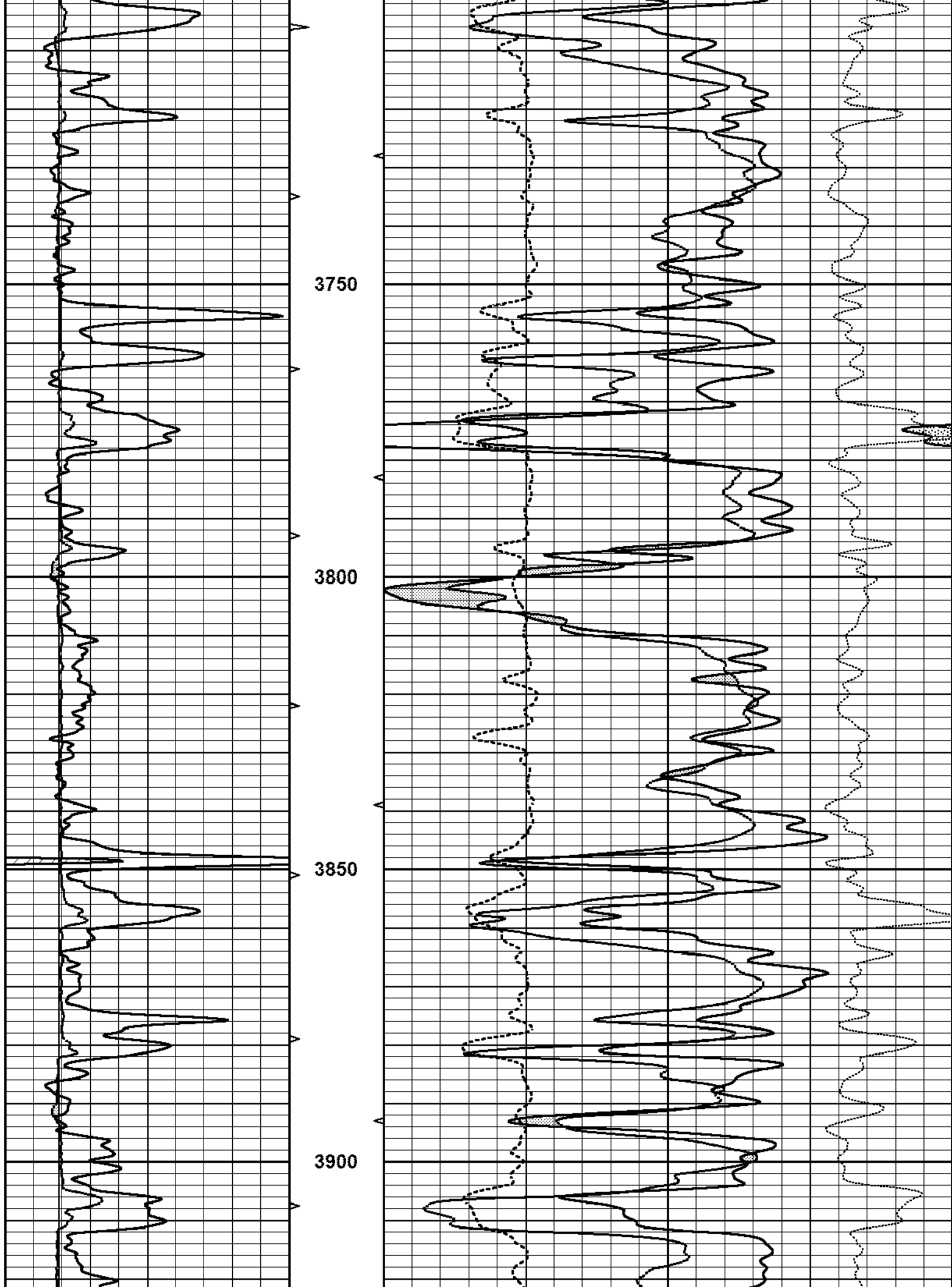


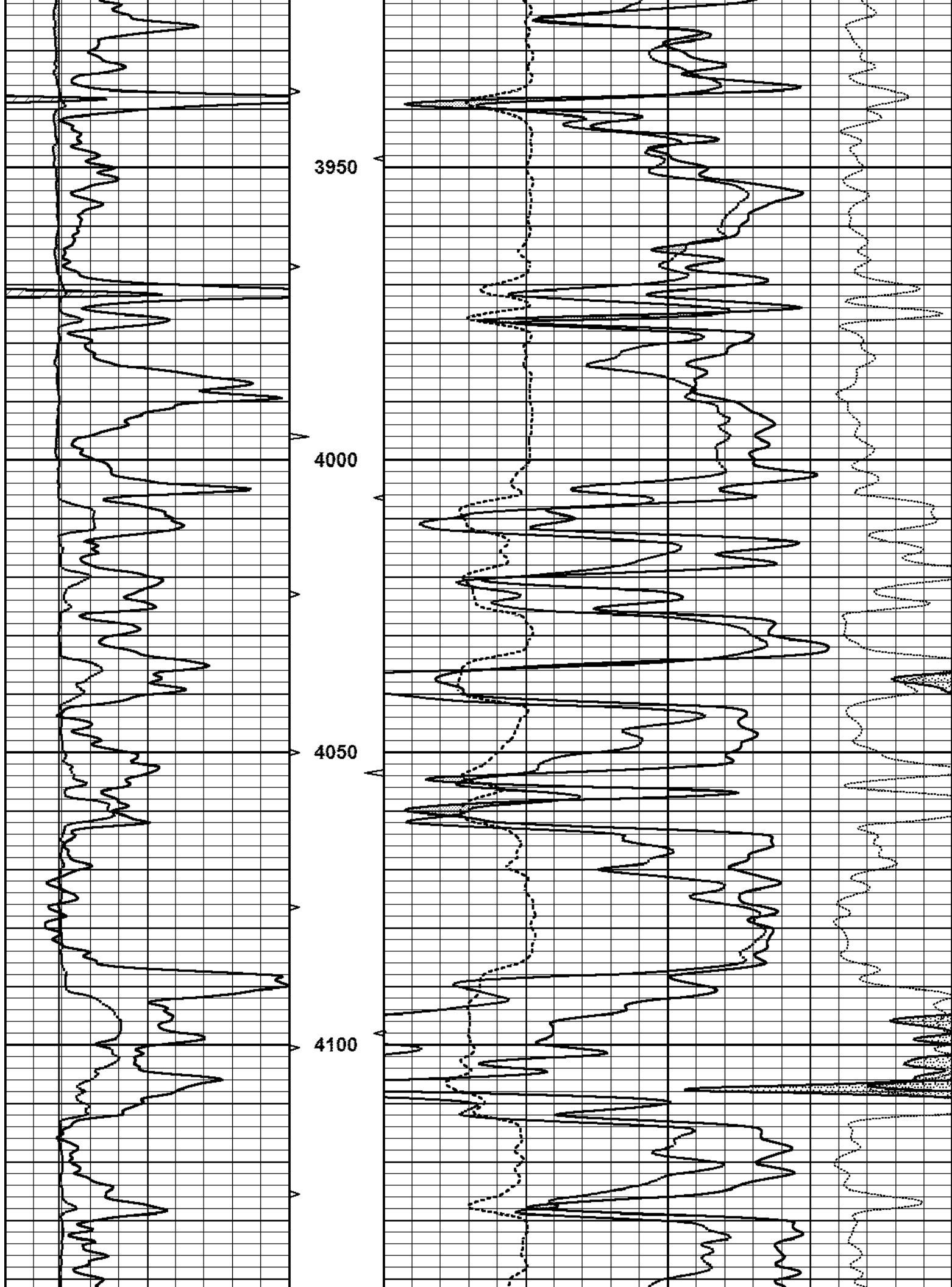


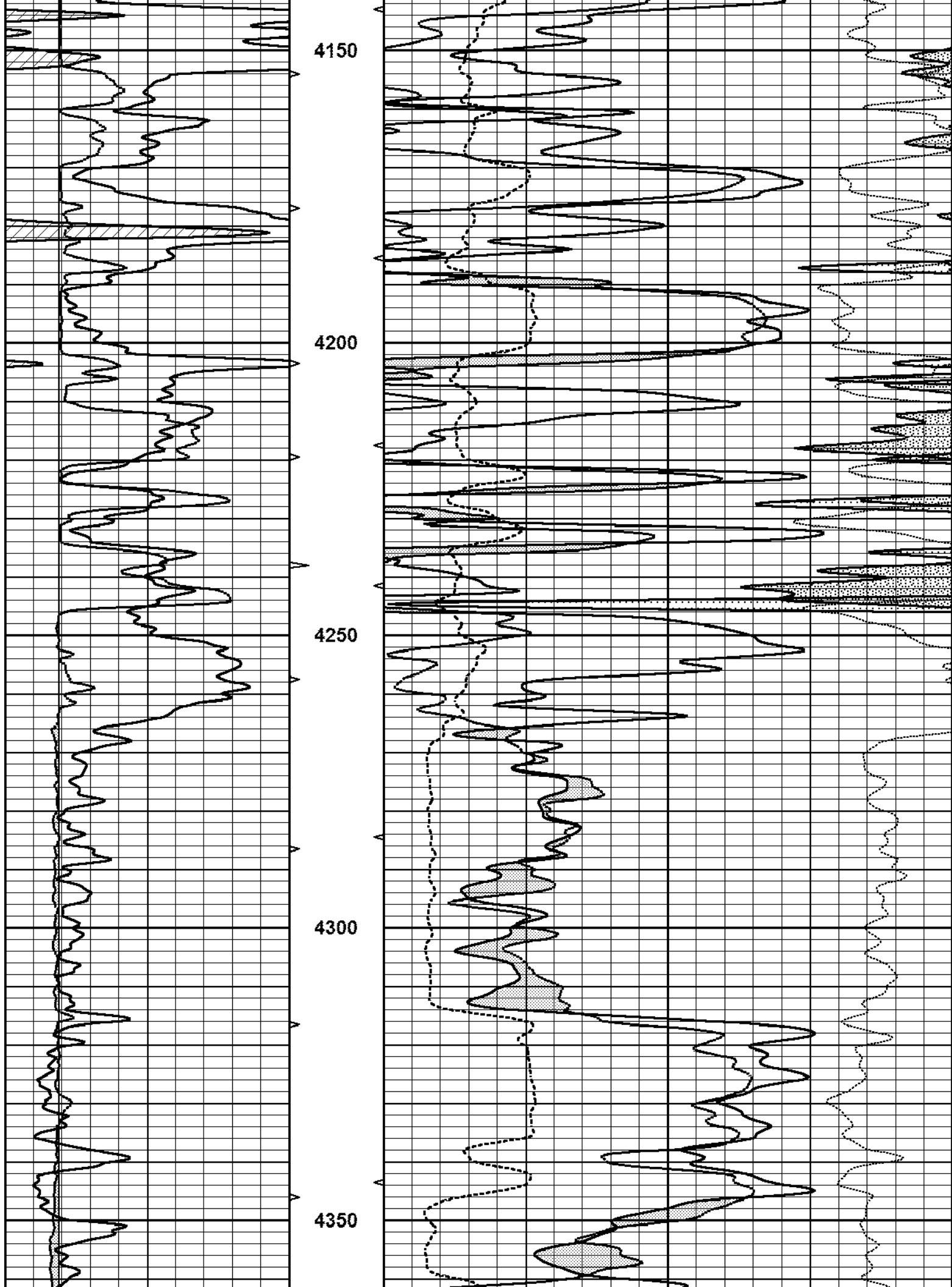


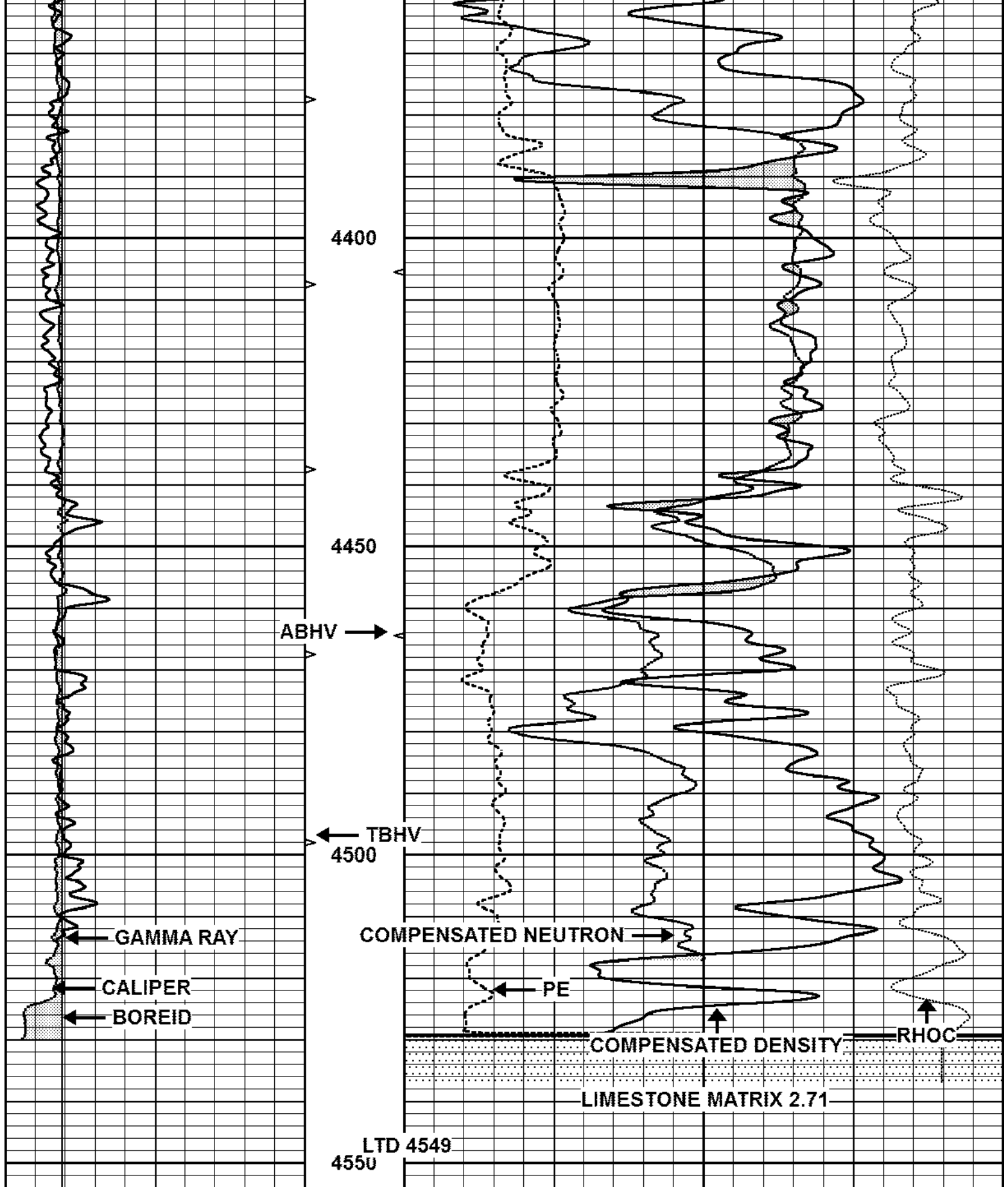




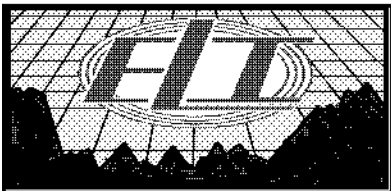








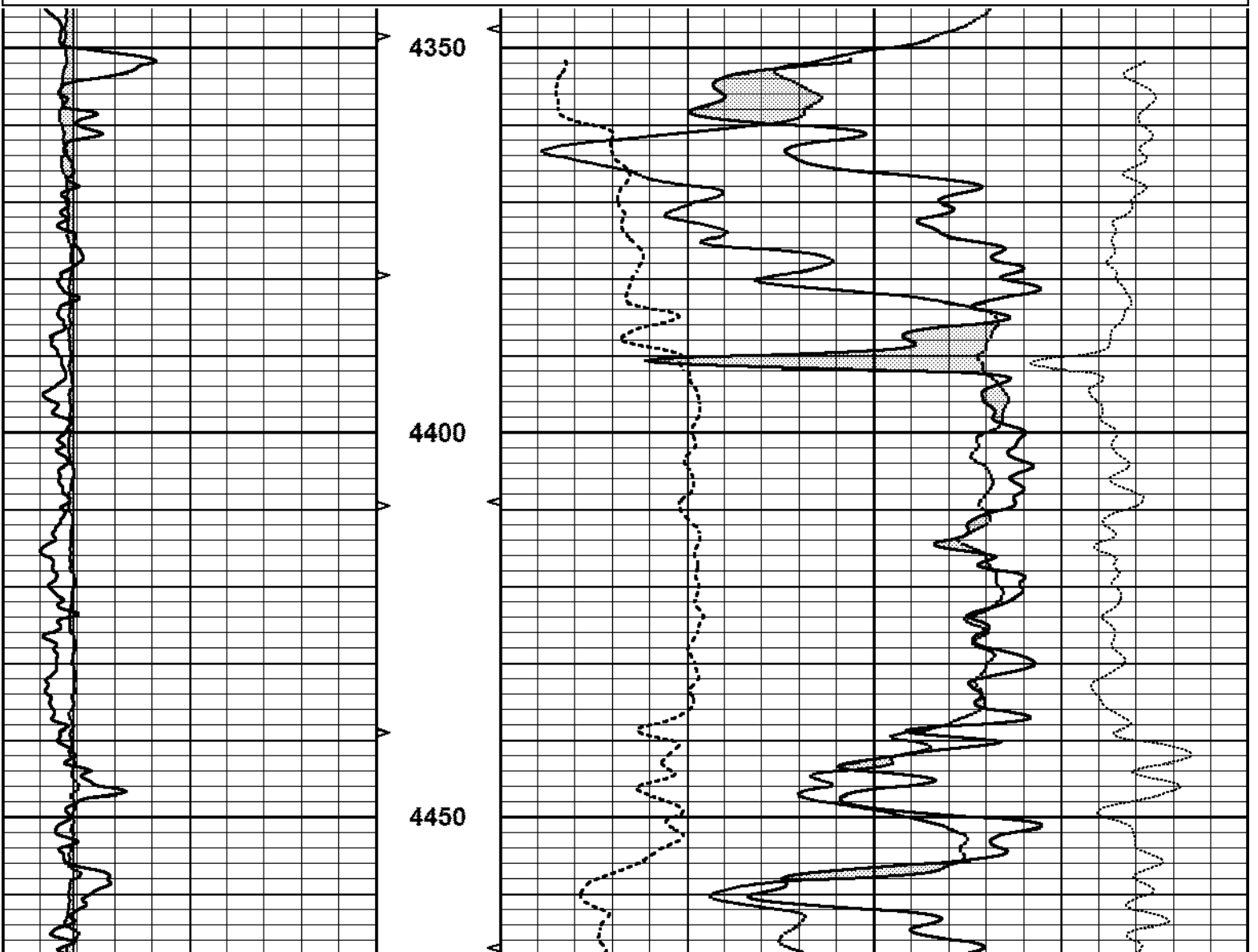
0	GAMMA RAY (GAPI)	150	ABHV	30	COMPENSATED DENSITY (pu)	-10
6	CALIPER (in)	16	(ft3)	30	COMPENSATED NEUTRON (pu)	-10
			10	0	PE	10
			TBHV			
			(ft3)		-0.25	0.25
					(g/cc)	

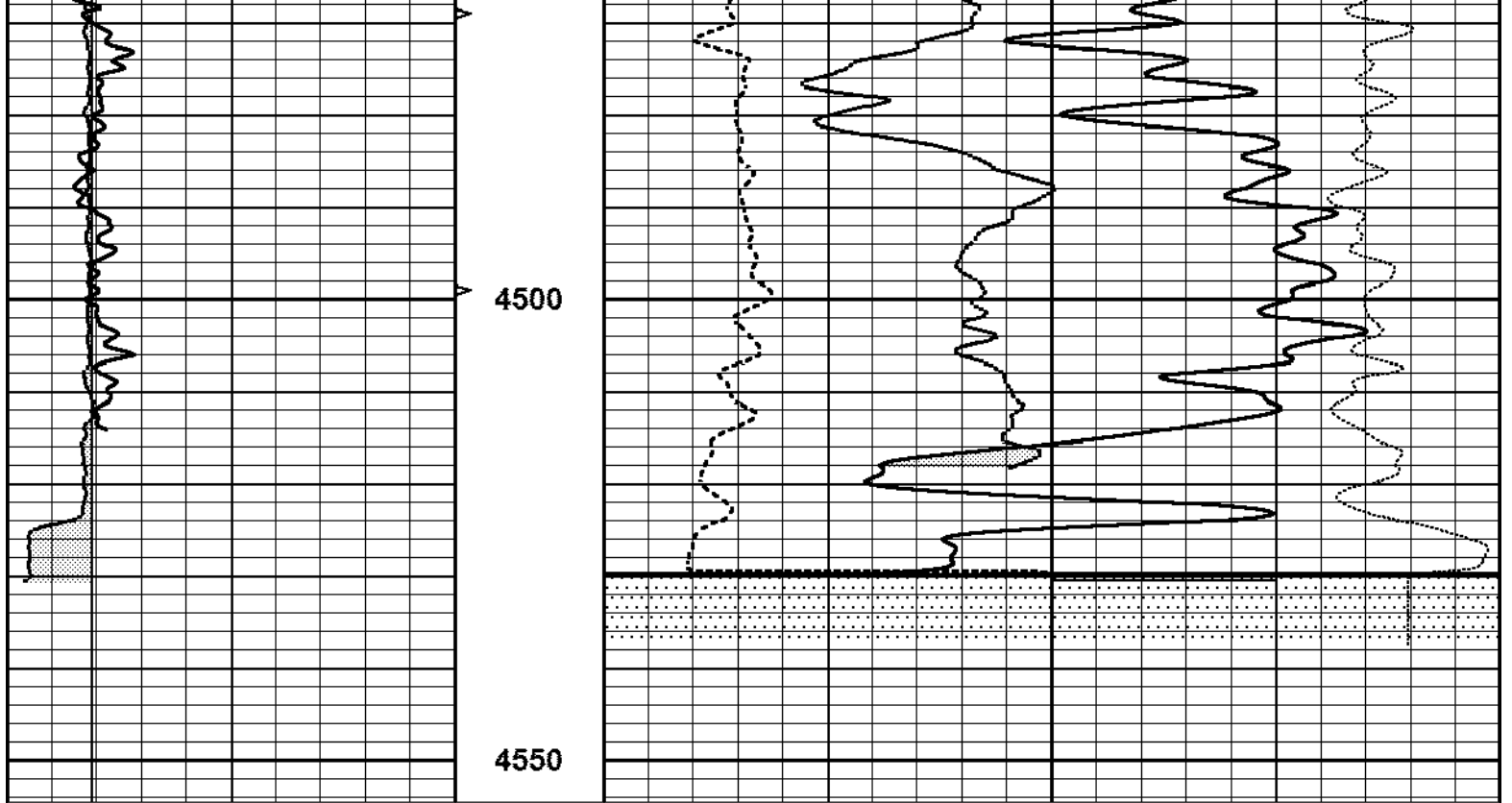


REPEAT SECTION

Database File 2373pe.db
Dataset Pathname pass2RP
Presentation Format _ldt_neu
Dataset Creation Sun Mar 18 08:45:10 2018
Charted by Depth in Feet scaled 1:240

0	GAMMA RAY (GAPI)	150	ABHV	30	COMPENSATED DENSITY (pu)	-10
6	CALIPER (in)	16	(ft3)	30	COMPENSATED NEUTRON (pu)	-10
			10 0	0	PE	10
			TBHV		-0.25	CORRECTION
			(ft3)		(g/cc)	0.25
			0 10			





0	GAMMA RAY (GAPI)	150	ABHV	30	COMPENSATED DENSITY (pu)	-10
6	CALIPER (in)	16	(ft3)	30	COMPENSATED NEUTRON (pu)	-10
		10	0	0	PE	10
			TBHV			
			(ft3)			
		0	10		-0.25	0.25
					(g/cc)	