

SONIC LOG

Company BEAR PETROLEUM, LLC
 Well STEJSKAL #1
 Field STEFFEN SOUTH
 County PAWNEE
 State KANSAS

Company BEAR PETROLEUM, LLC
 Well STEJSKAL #1
 Field STEFFEN SOUTH
 County PAWNEE State KANSAS

Location: API #: 15-145-21830-0000
 660' FNL & 660' FEL
 SEC 16 TWP 21S RGE 20W
 Permanent Datum GROUND LEVEL Elevation 2106
 Log Measured From KELLY BUSHING 6' A.G.L
 Drilling Measured From KELLY BUSHING
 Other Services CDL/CNL/DIL MEL
 Elevation K.B. 2112 D.F. 2110 G.L. 2106

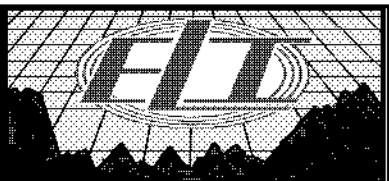
Date	03/18/18
Run Number	TWO
Depth Driller	4546
Depth Logger	4549
Bottom Logged Interval	4546
Top Log Interval	50
Casing Driller	8 5/8" @ 1247
Casing Logger	1247
Bit Size	7 7/8
Type Fluid in Hole	CHEMICAL MUD
Density / Viscosity	9.2/53
PH / Fluid Loss	9.5/9.8
Source of Sample	FLOWLINE
Rm @ Meas. Temp	.40 @ 68F
Rmf @ Meas. Temp	.30 @ 68F
Rmc @ Meas. Temp	.48 @ 68F
Source of Rmf / Rmc	MEASUREMENT
Rm @ BHT	.21 @ 121F
Time Circulation Stopped	2 HOURS
Time Logger on Bottom	///
Maximum Recorded Temperature	121F
Equipment Number	3802
Location	HAYS, KANSAS
Recorded By	GUS PFANENSTIEL
Witnessed By	ROD ANDERSON

>>> Fold Here >>>

All interpretations are opinions based on inferences from electrical or other measurements and we cannot and do not guarantee the accuracy or correctness of any interpretation, and we shall not, except in the case of gross or wilful negligence on our part, be liable or responsible for any loss, costs, damages, or expenses incurred or sustained by anyone resulting from any interpretation made by any of our officers, agents or employees. These interpretations are also subject to our general terms and conditions set out in our current Price Schedule.

Comments

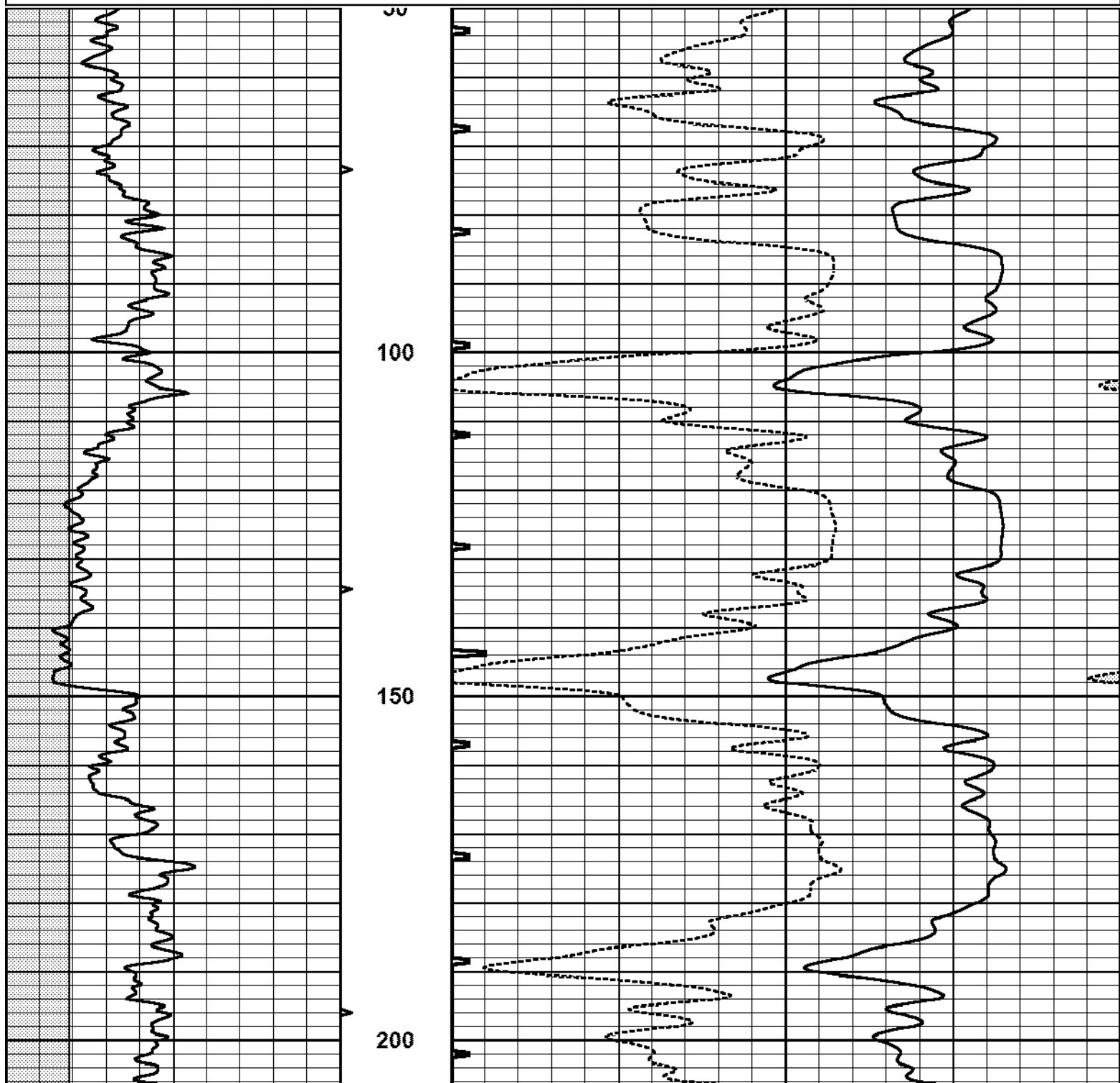
THANK YOU FOR USING ELI WIRELINE SERVICES, HAYS, KS. (785) 628-6395
 DIRECTIONS
 BURDETT GO TO RD. 345 NORTH 1 MILE,
 1/2 EAST, 3/4 NORTH, WEST INTO.

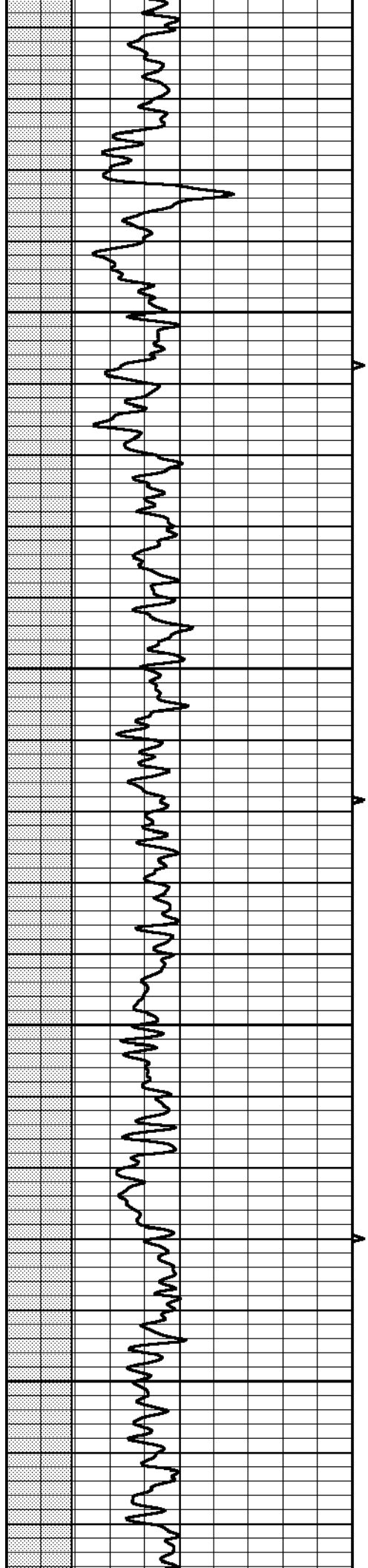


MAIN PASS

Database File 2373pe.db
 Dataset Pathname pass5.1
 Presentation Format _slt
 Dataset Creation Sun Mar 18 11:14:58 2018
 Charted by Depth in Feet scaled 1:240

0	GAMMA RAY (GAPI)	150	ABHV	140	DELTA TIME (usec/ft)	40
6	CALIPER (in)	16	(ft3)	30	SONIC POROSITY (pu)	-10
			10	0	ITT (msec)	20
			TBHV			
			(ft3)			
			0	10		



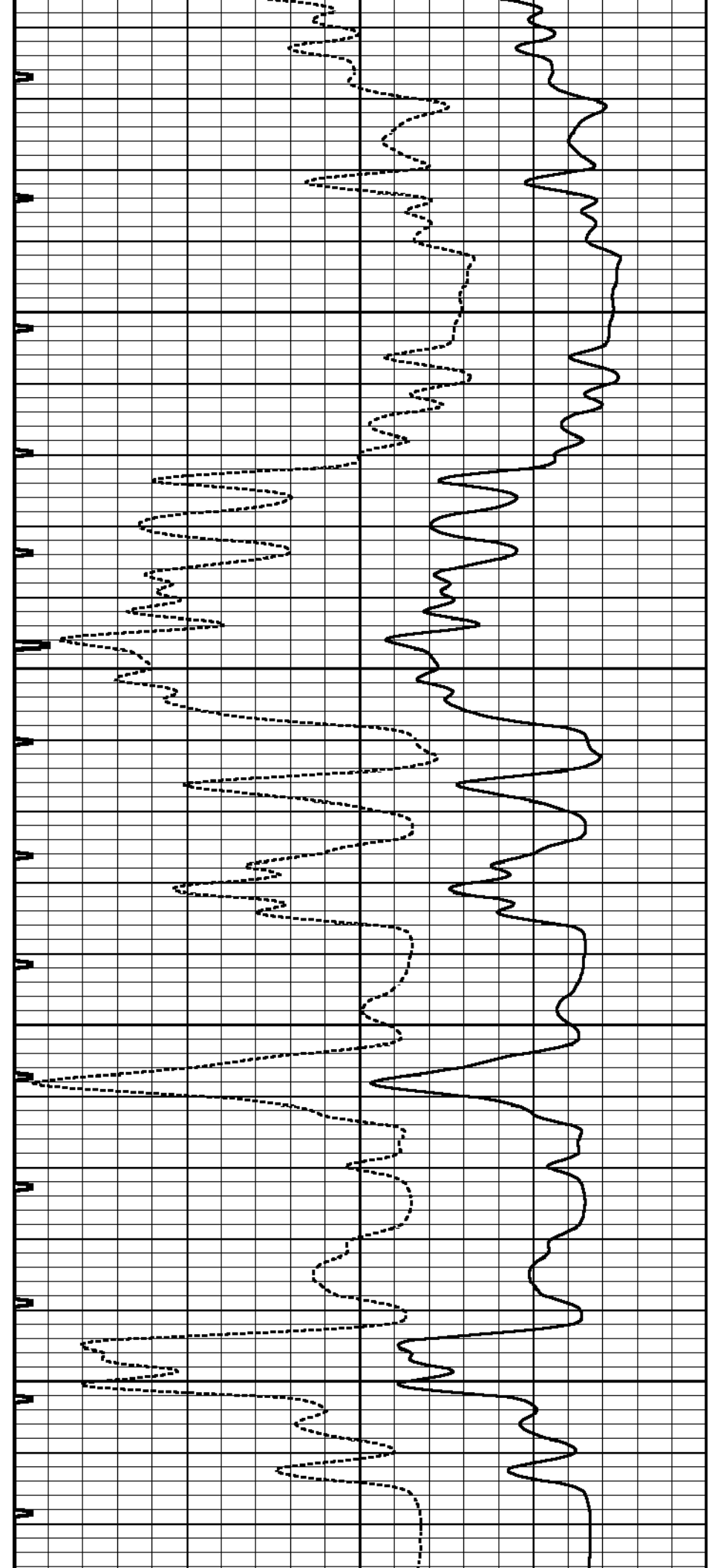


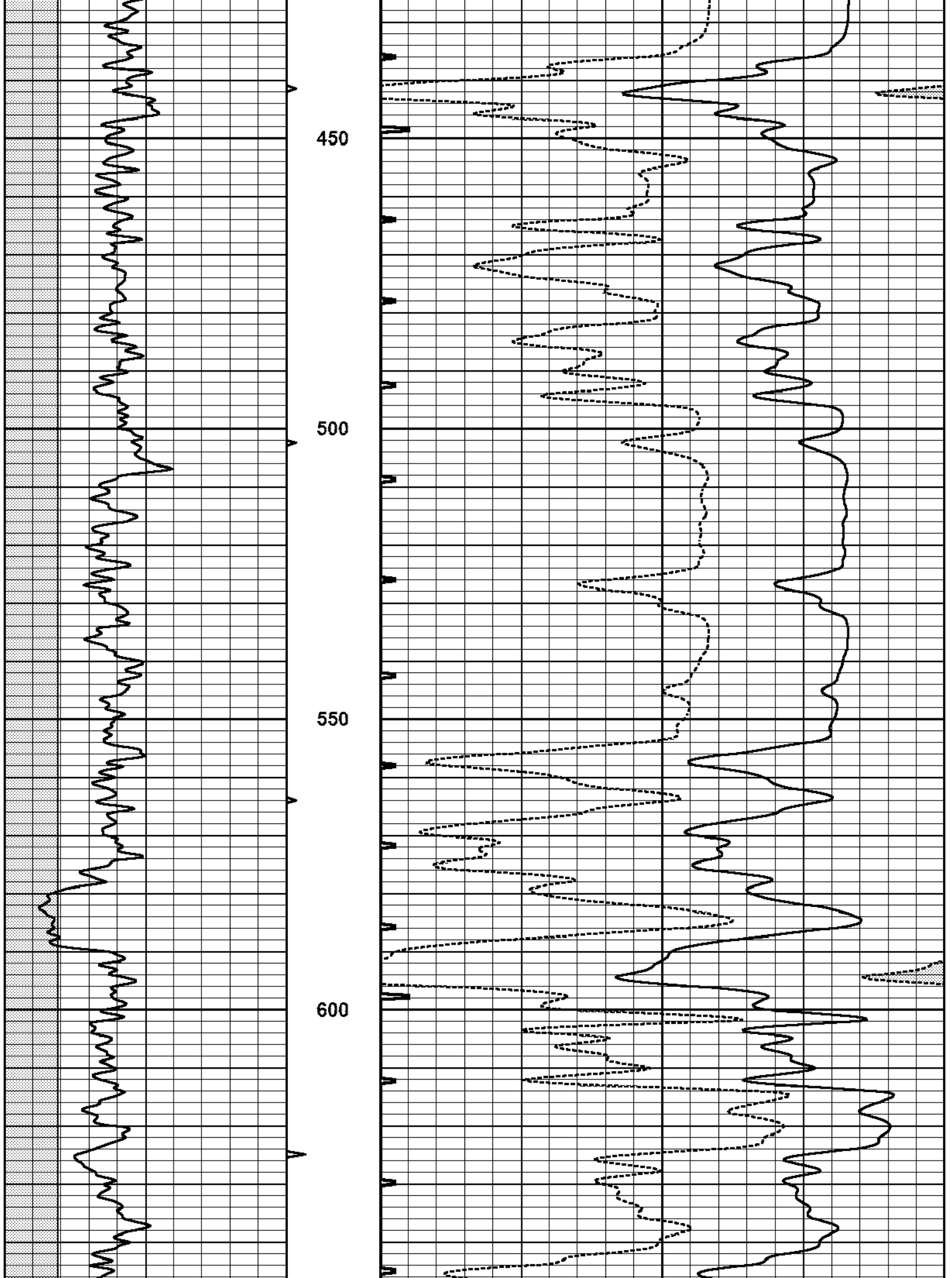
250

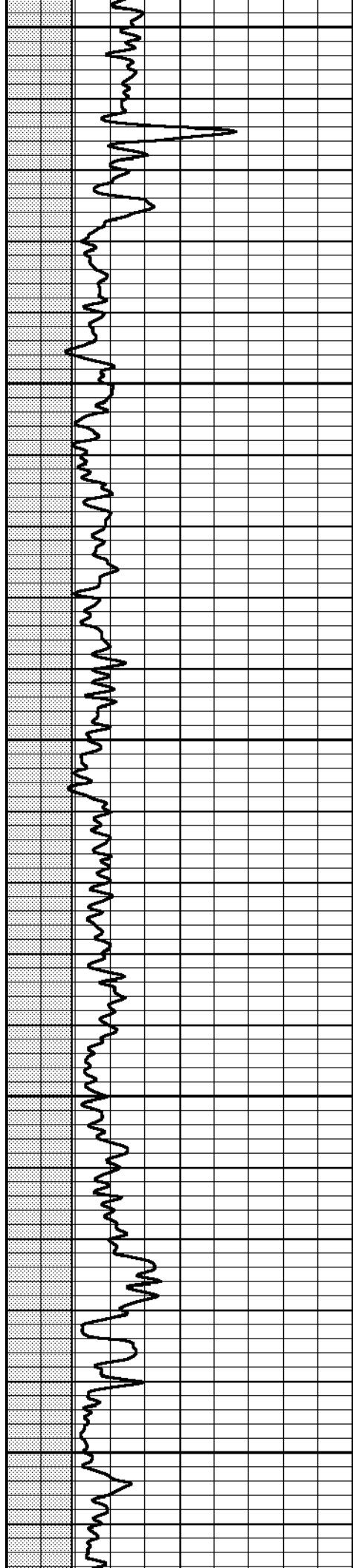
300

350

400







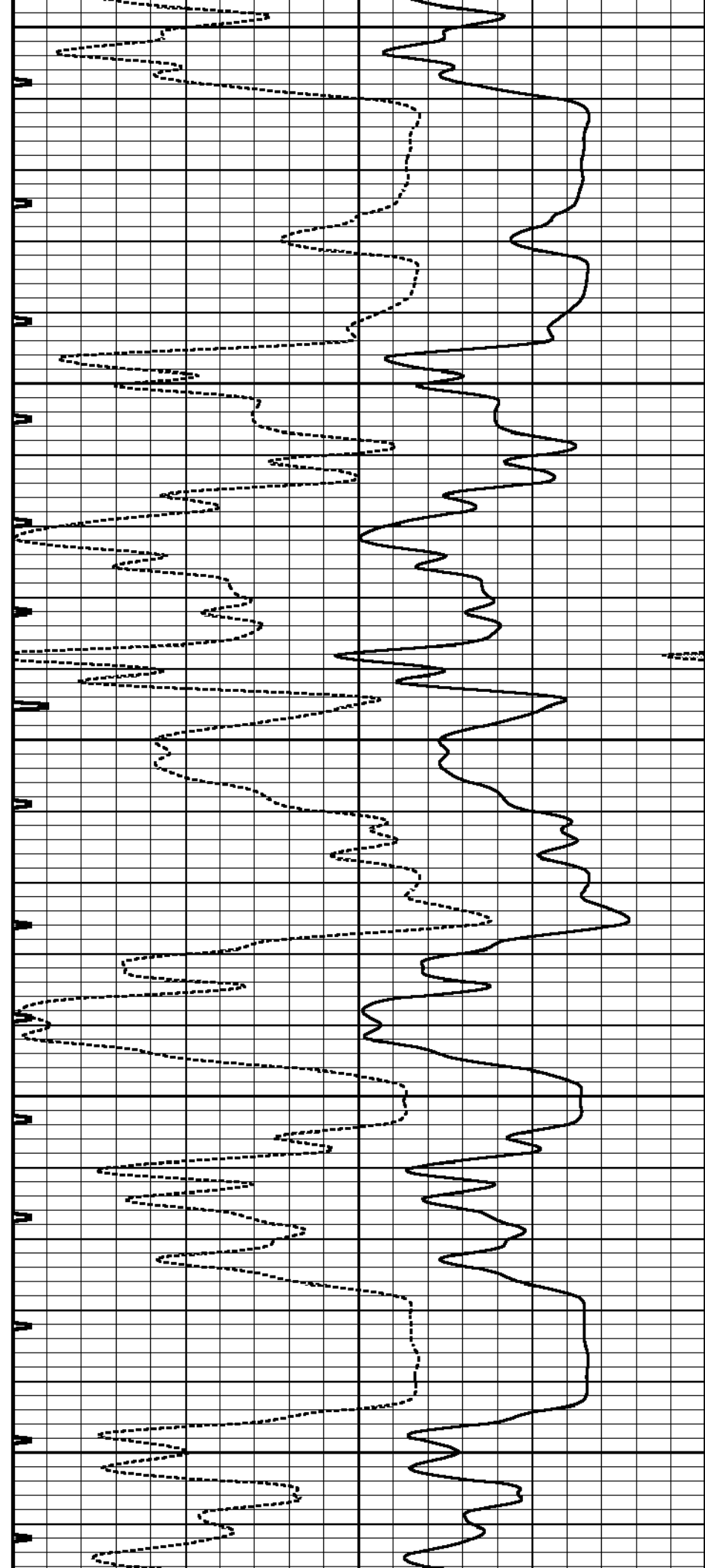
650

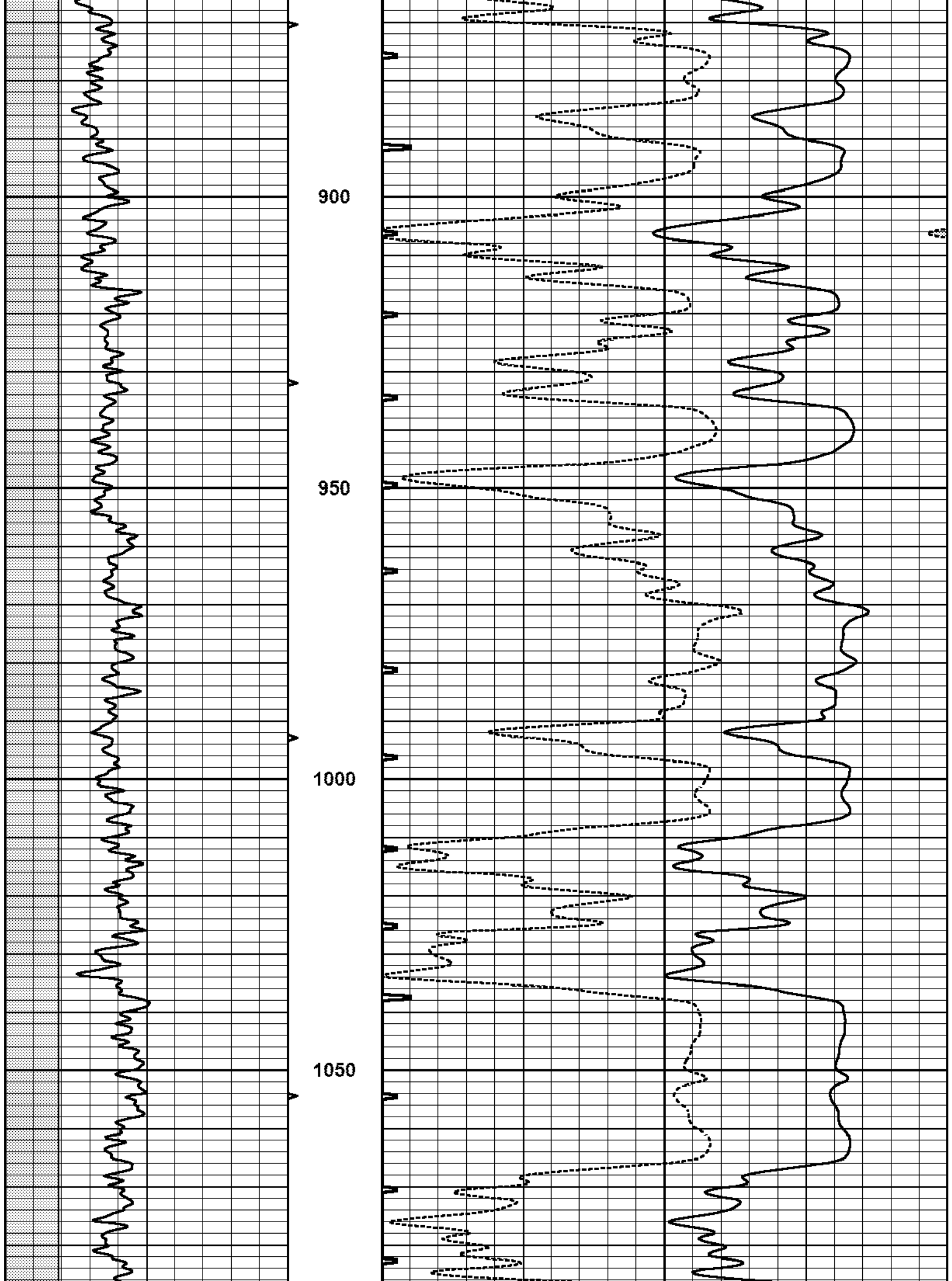
700

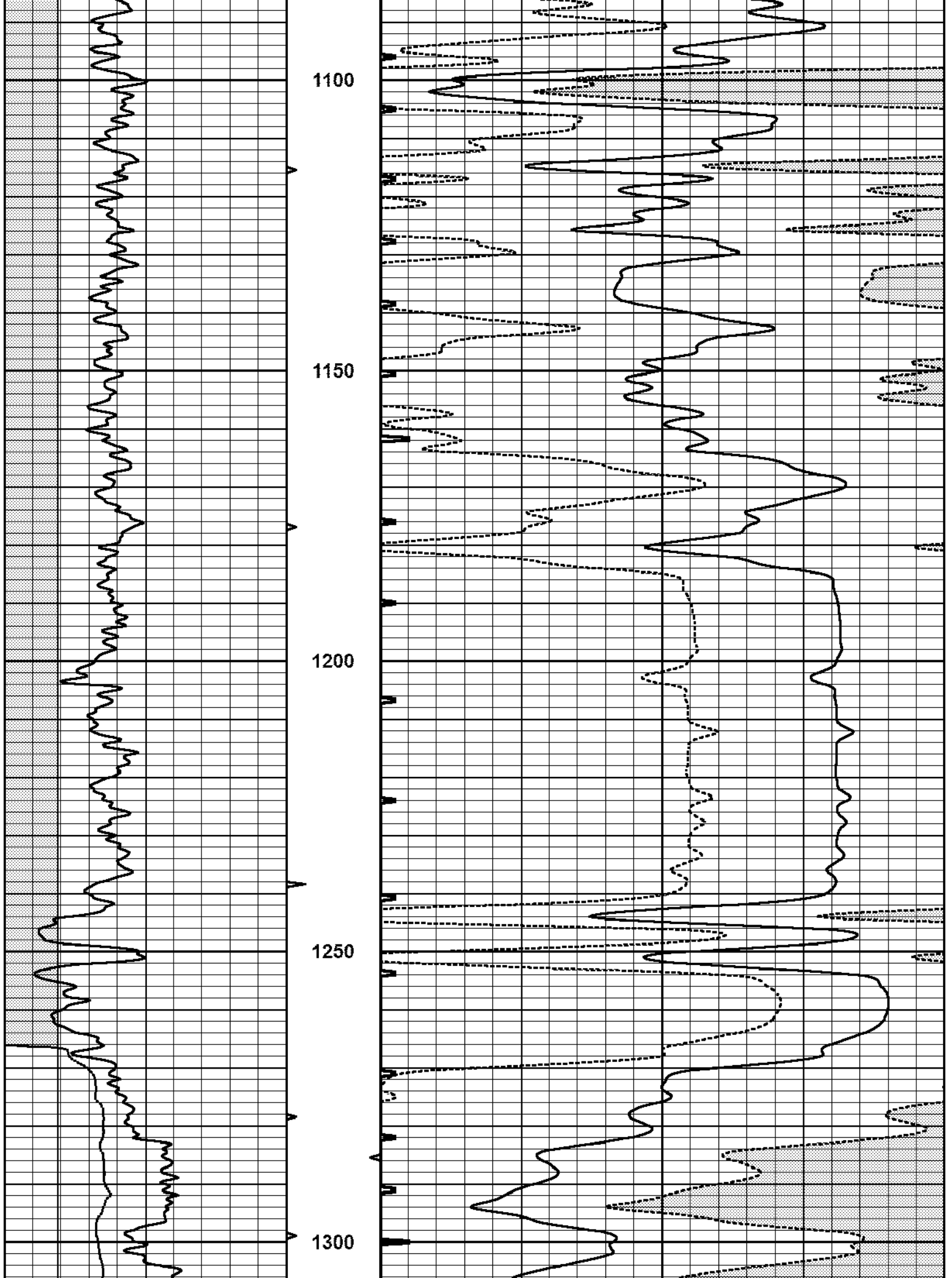
750

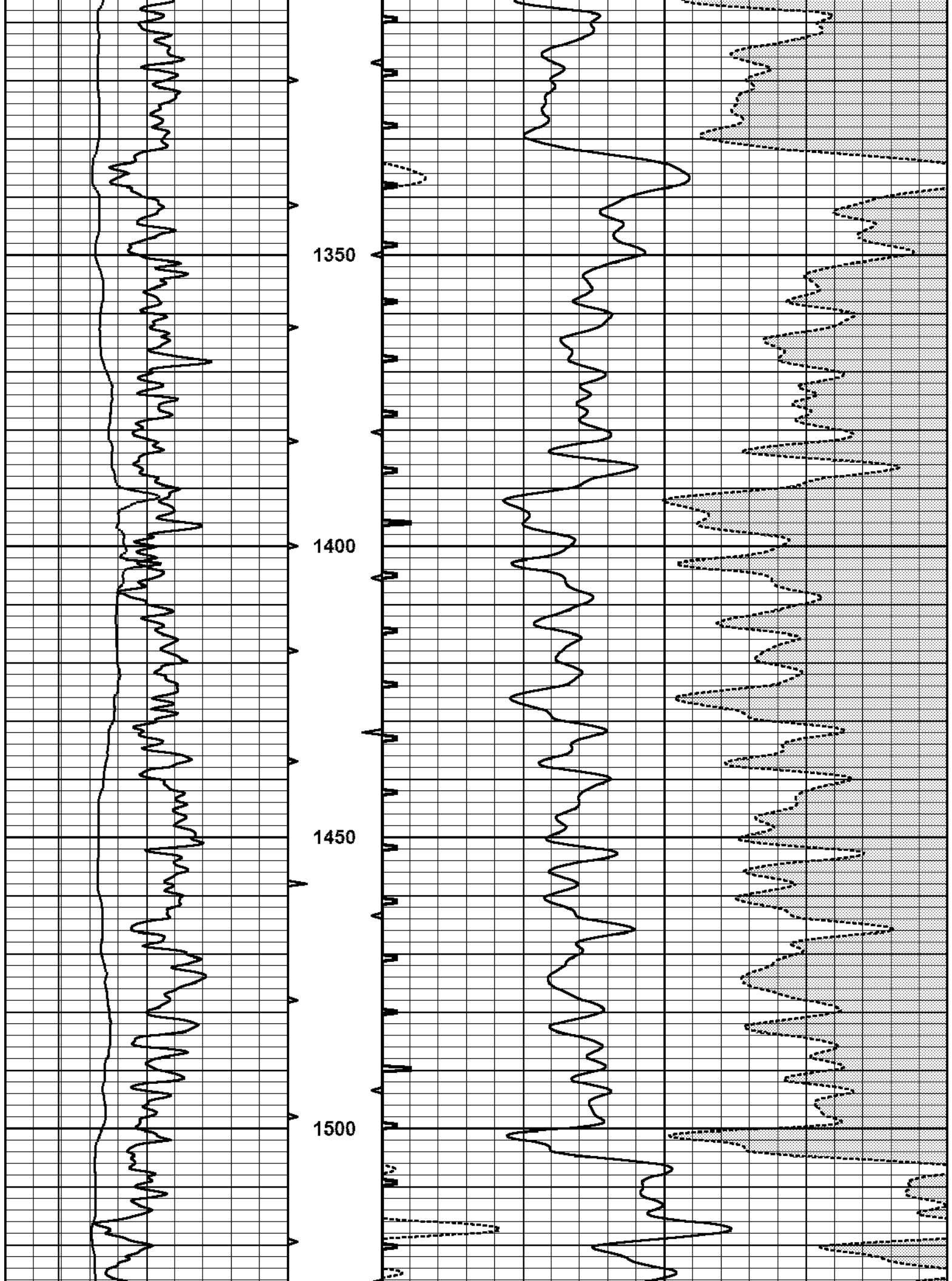
800

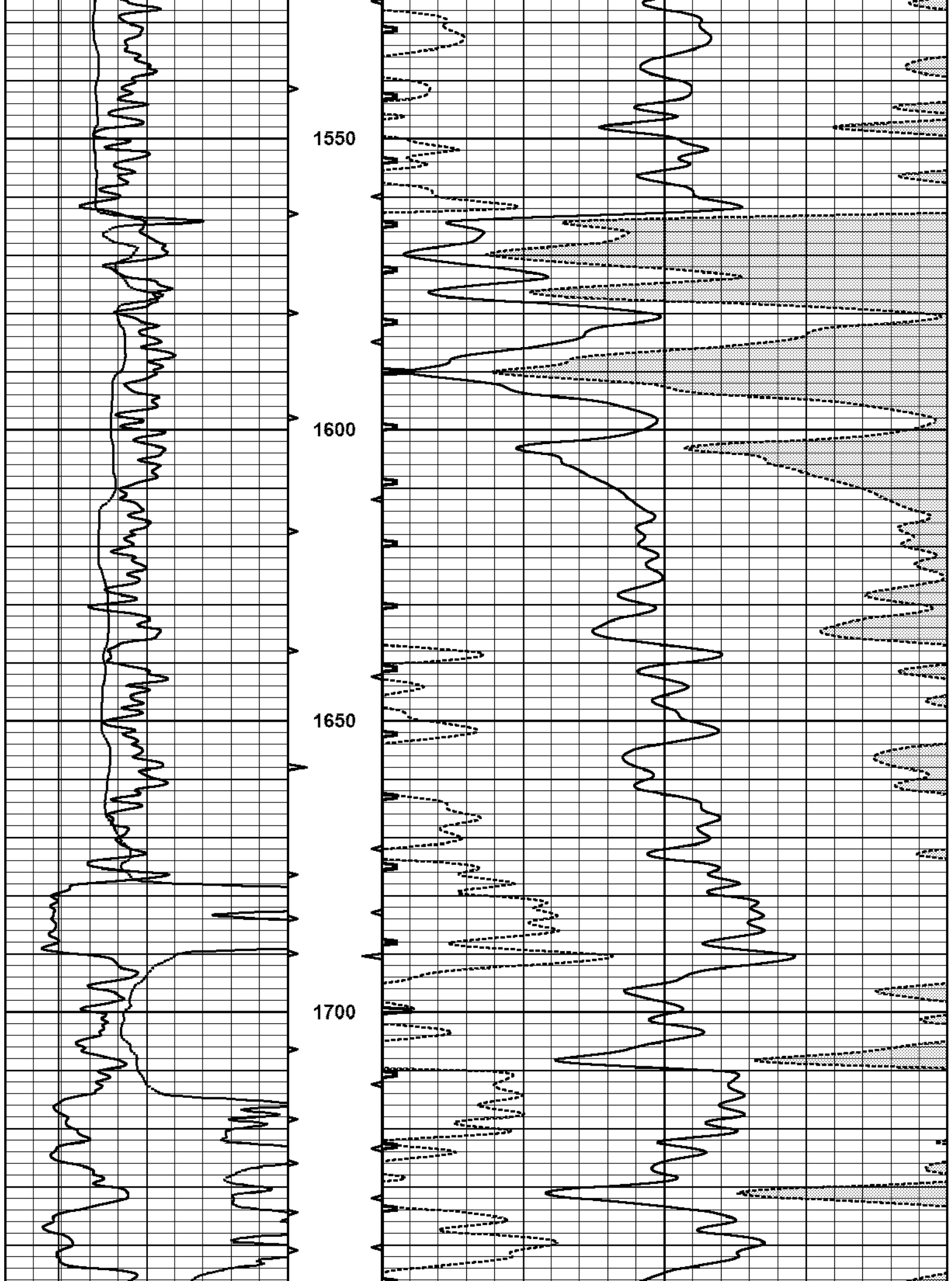
850

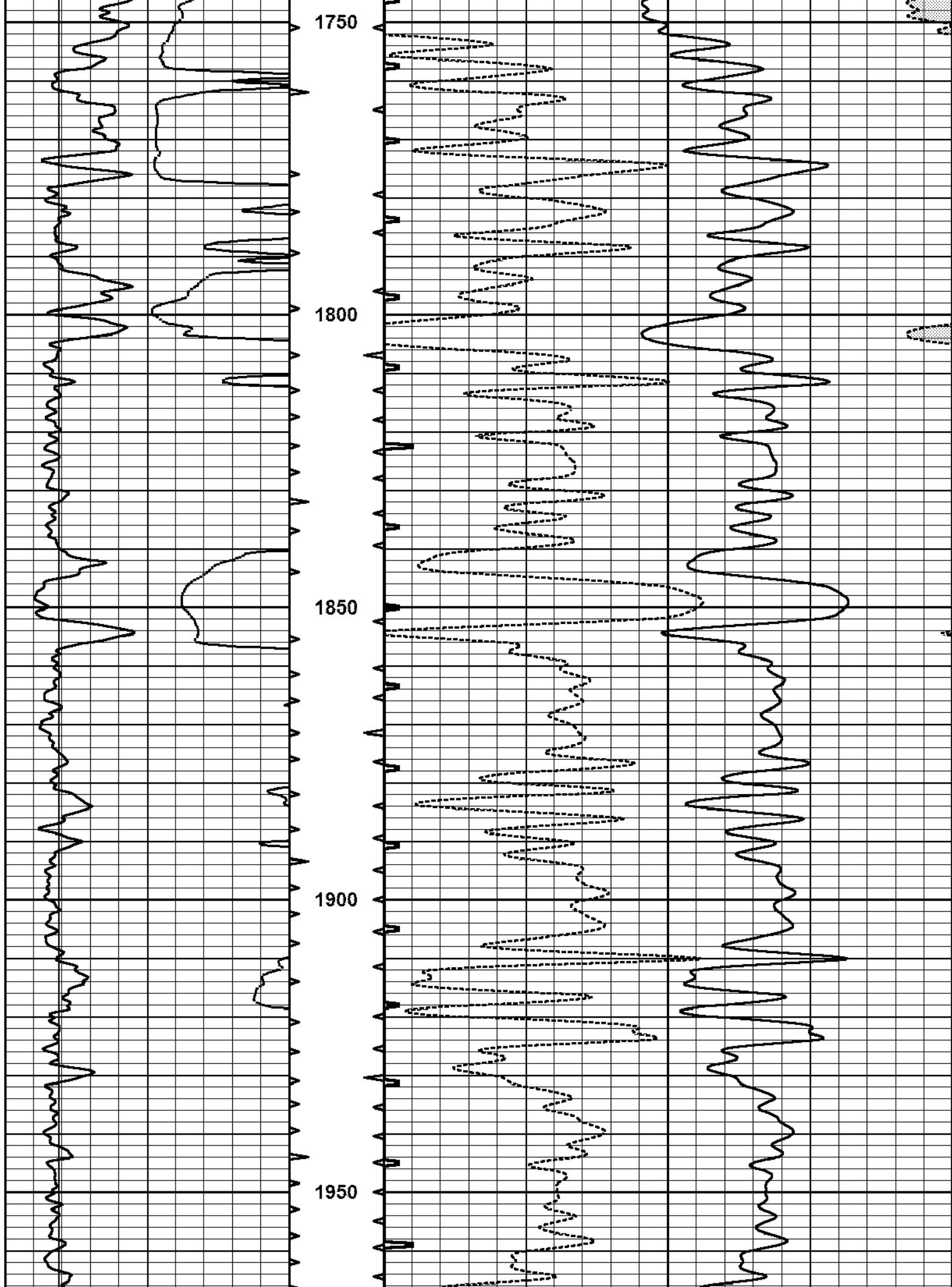




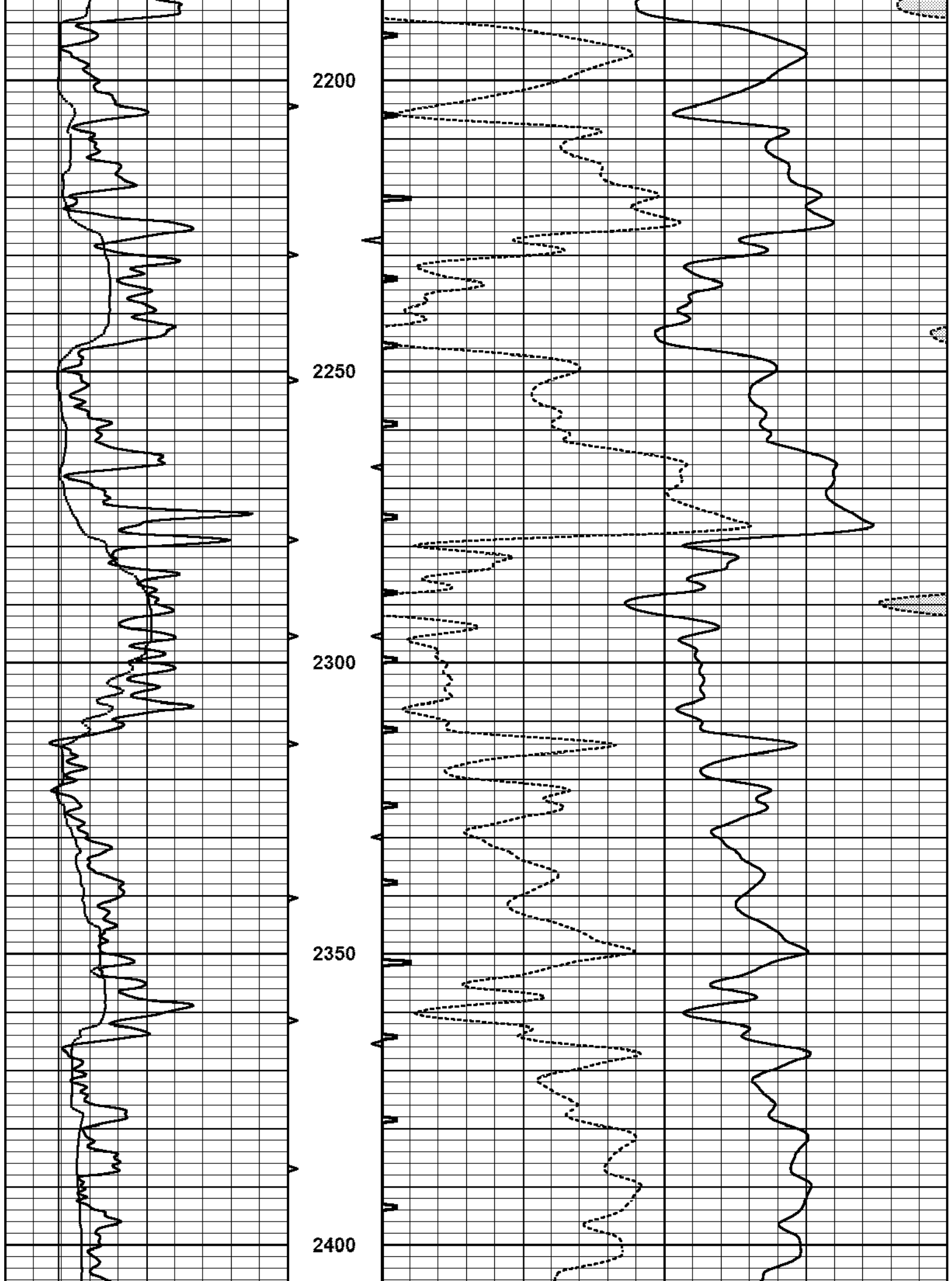


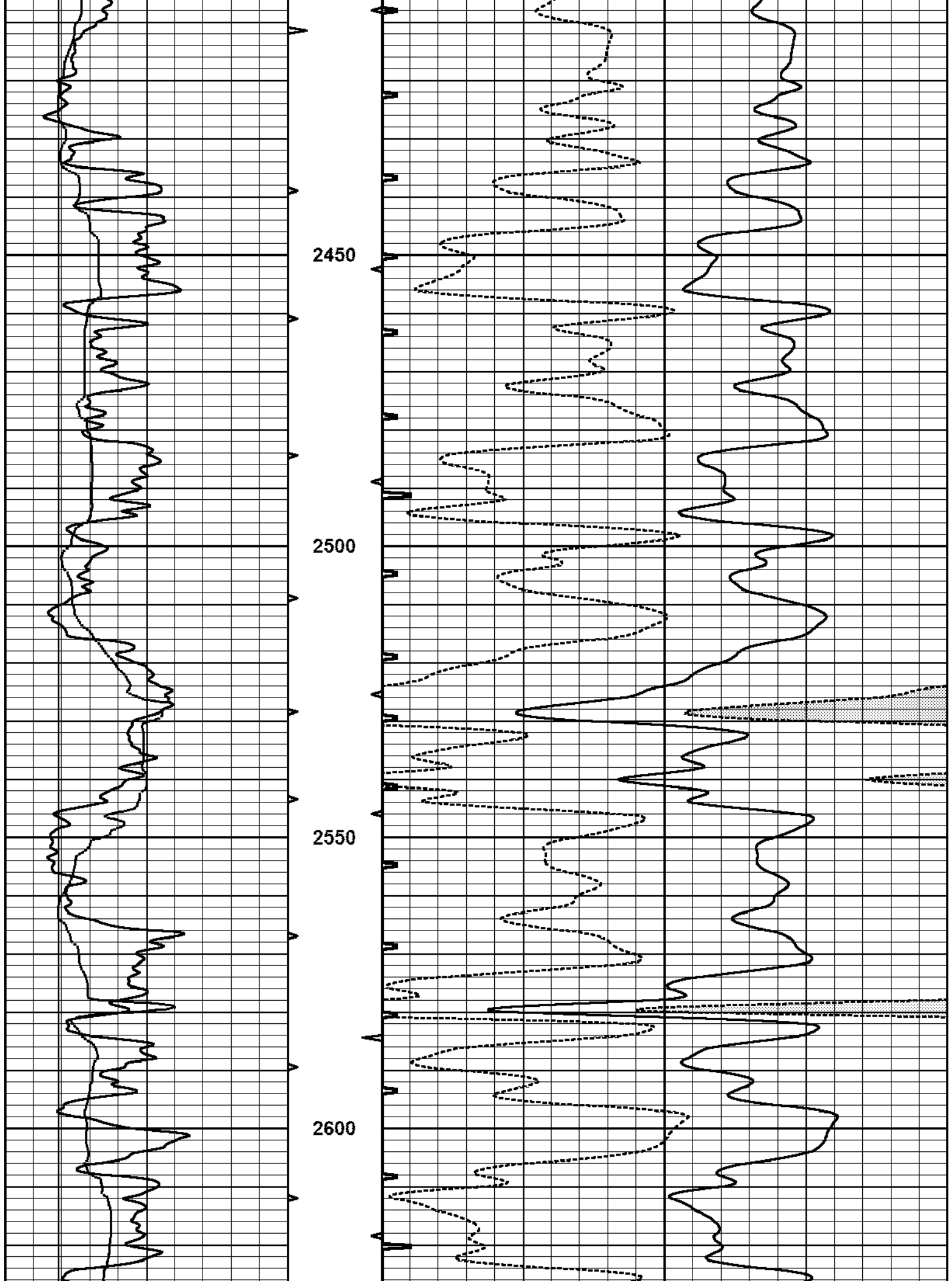


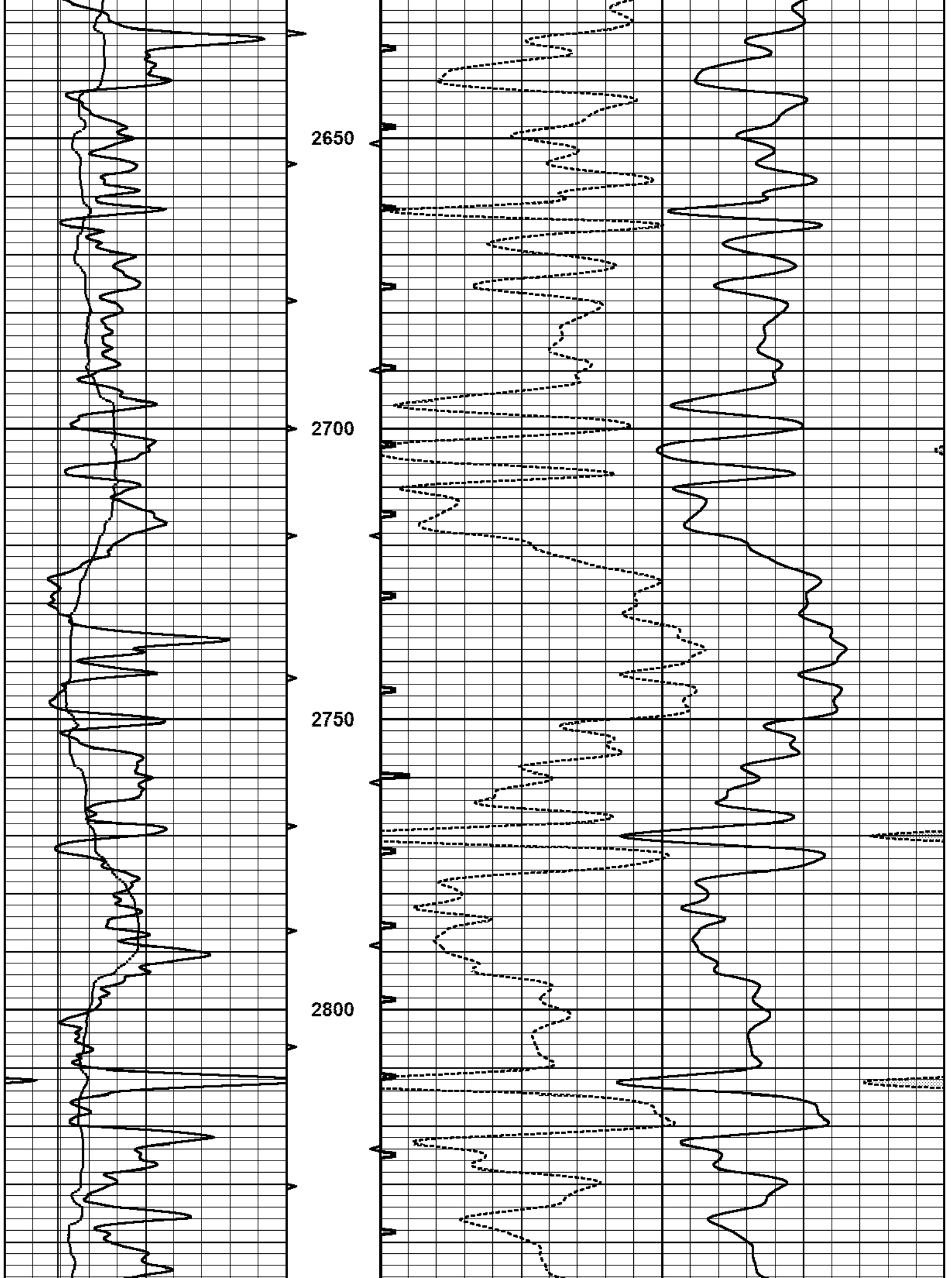


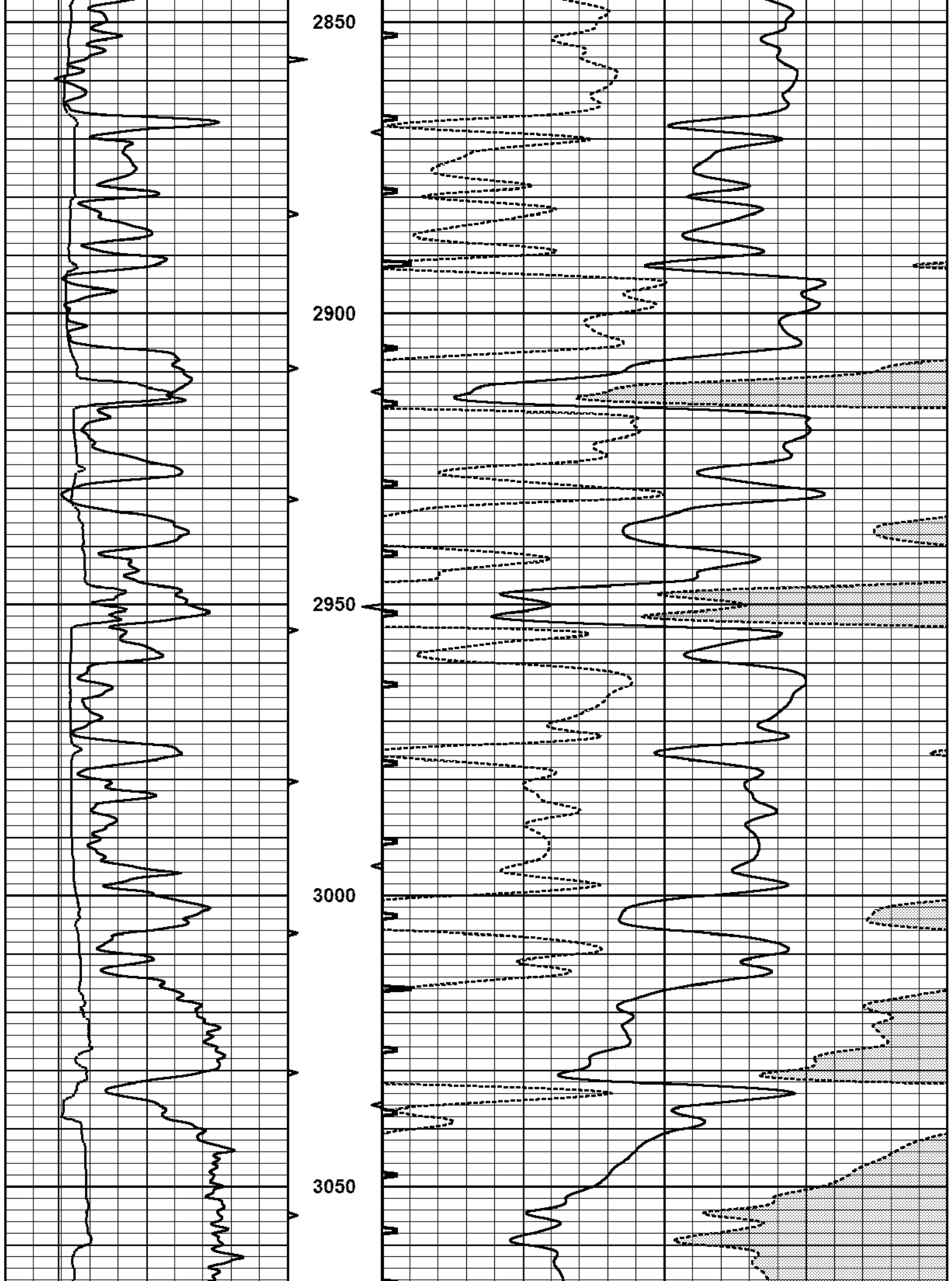


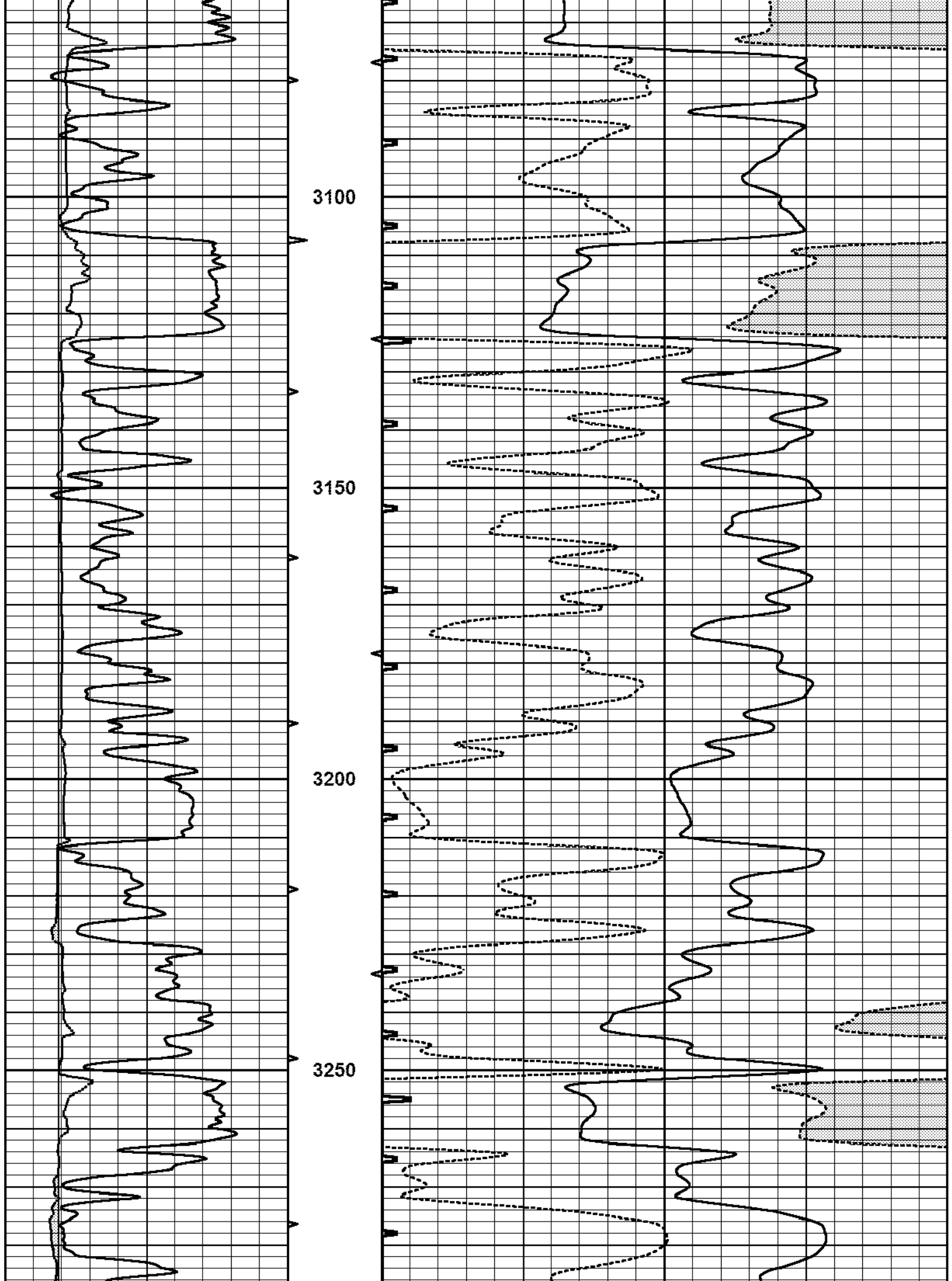


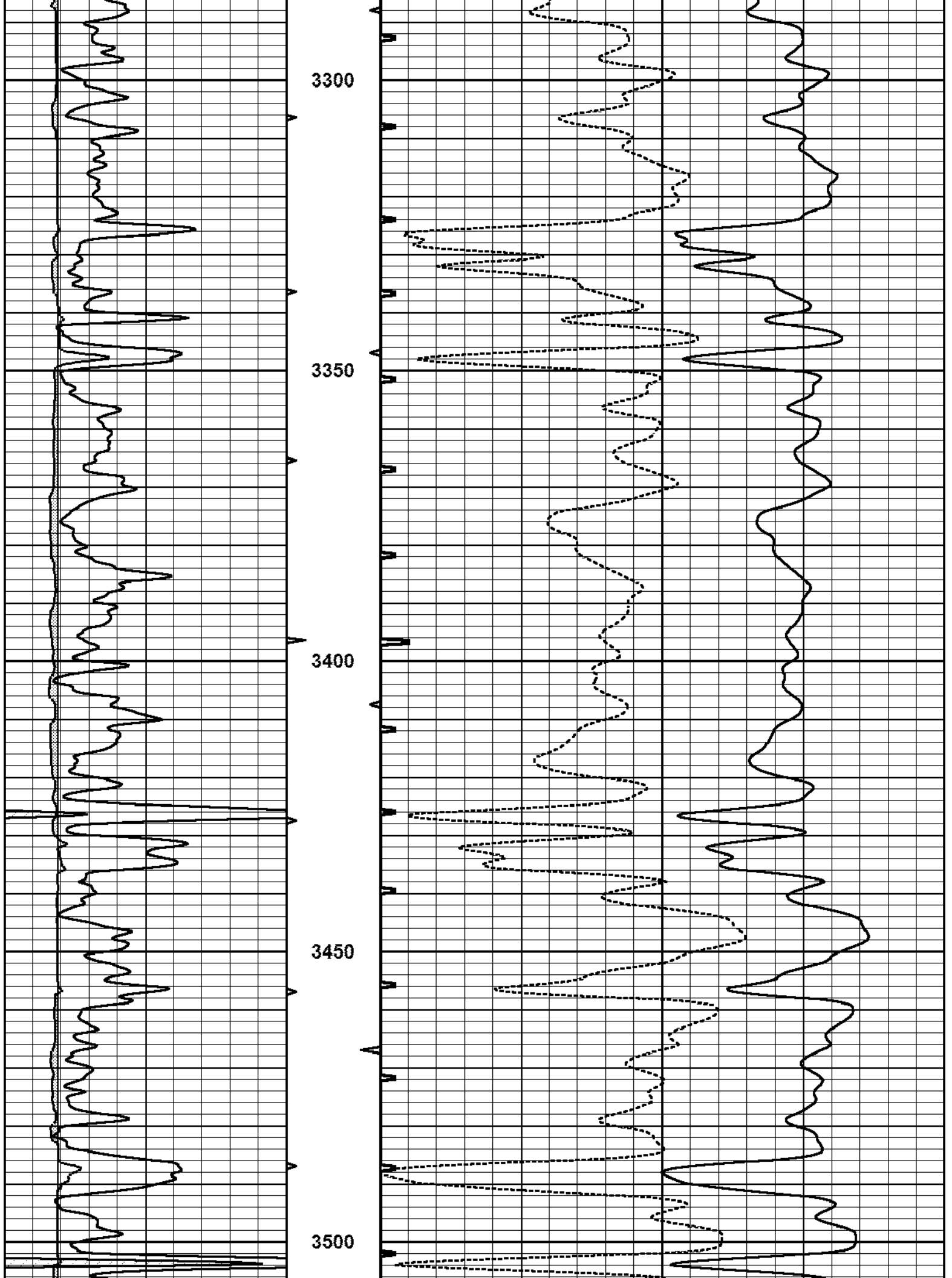


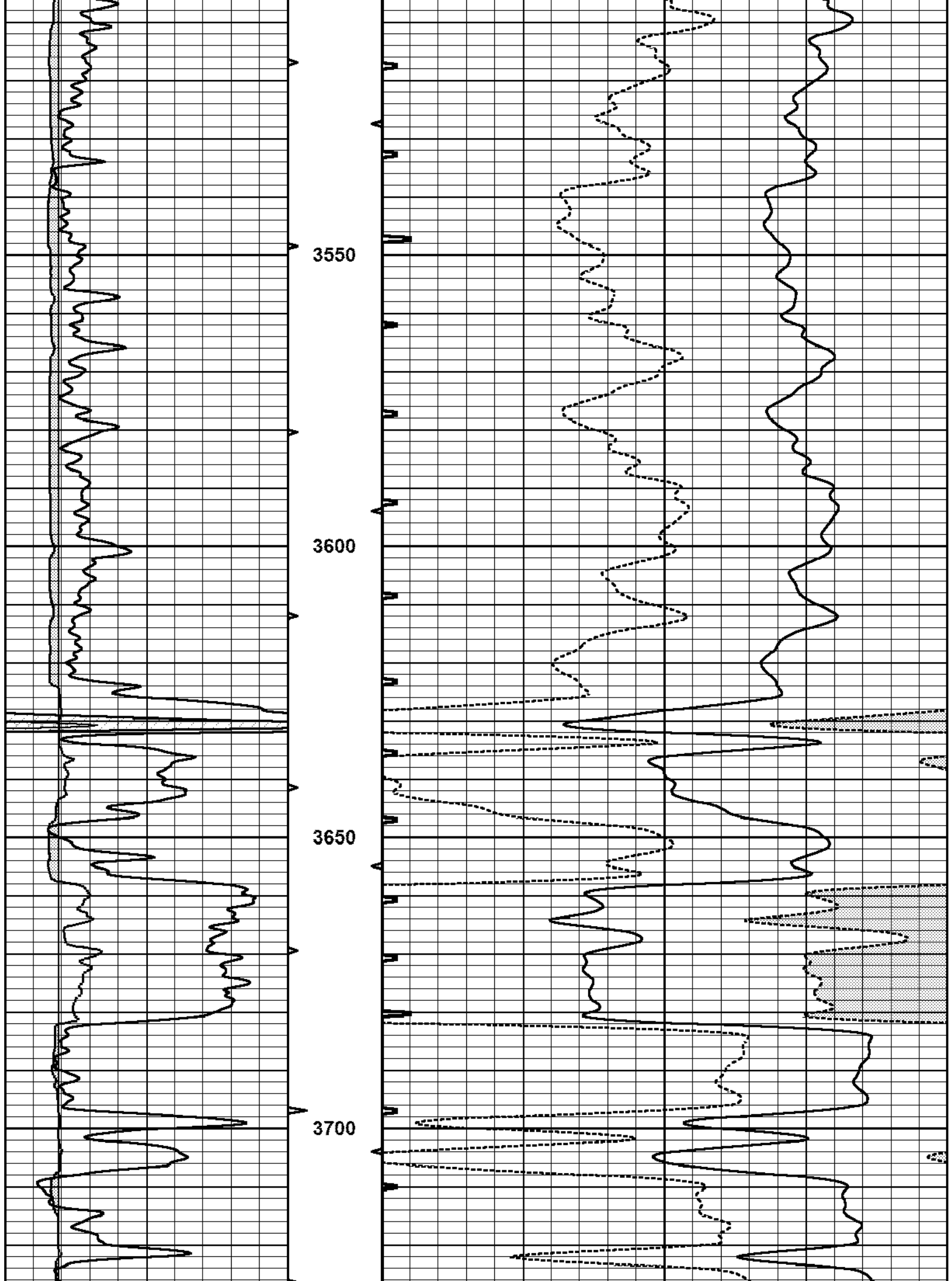


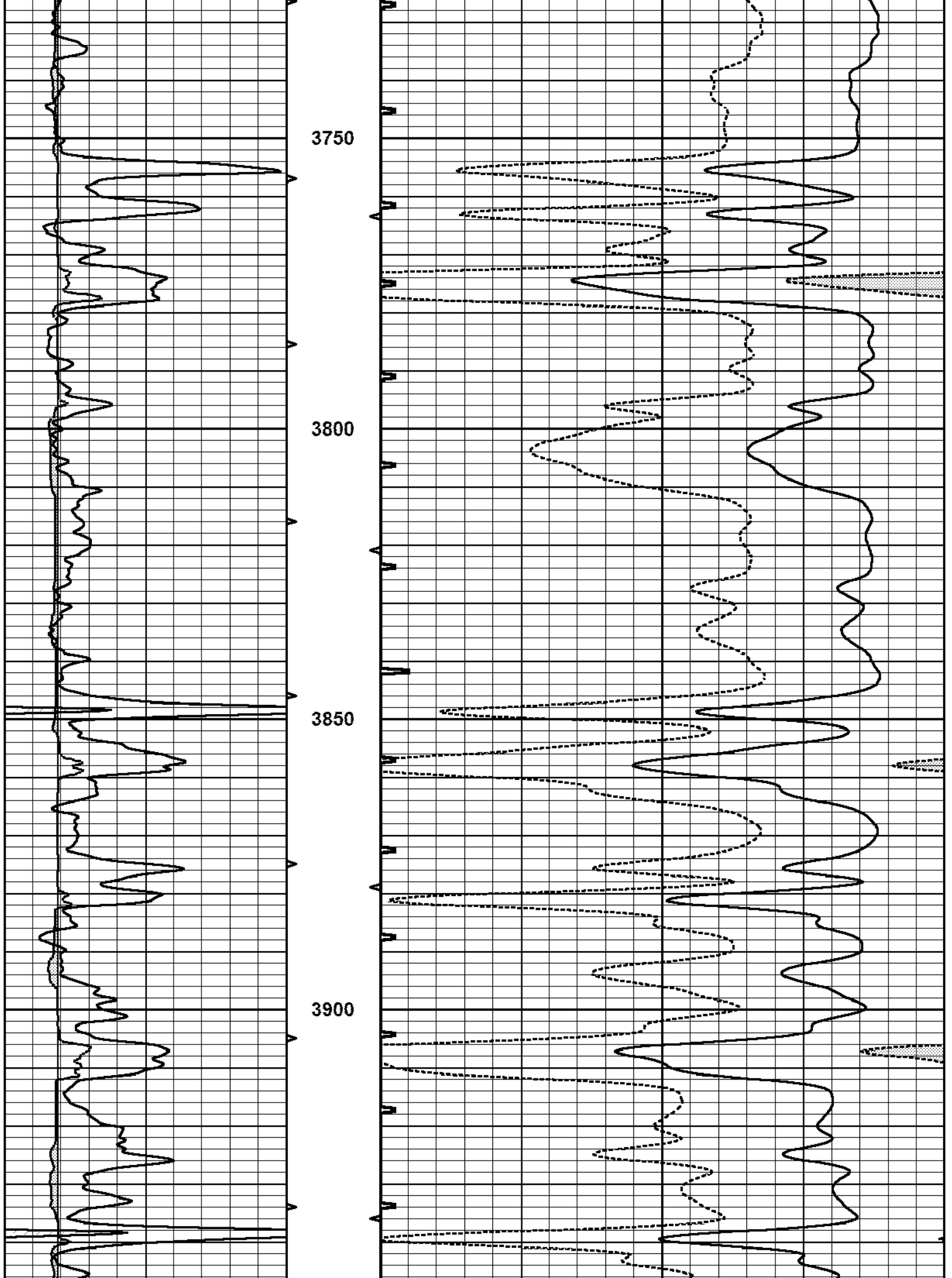


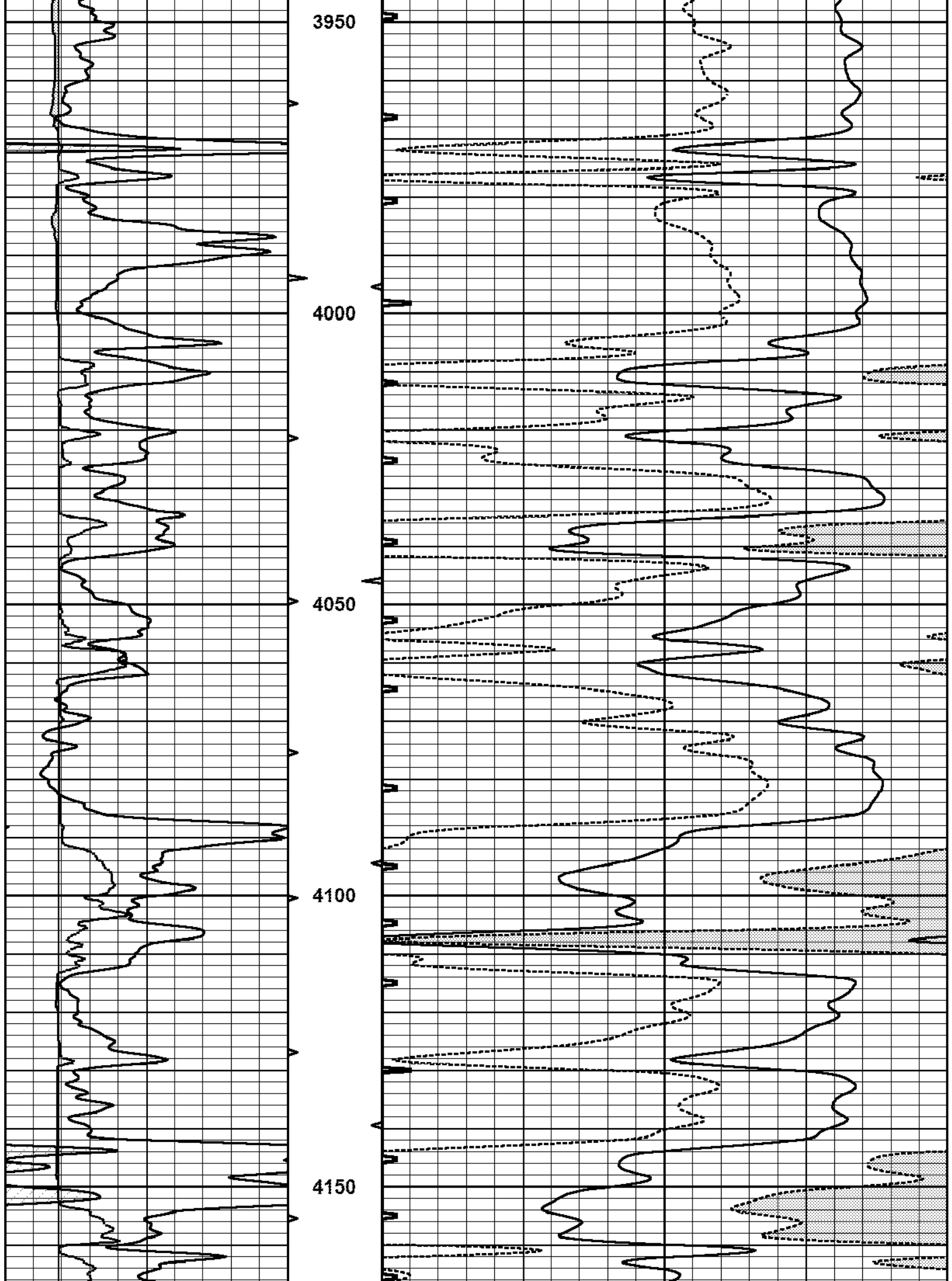


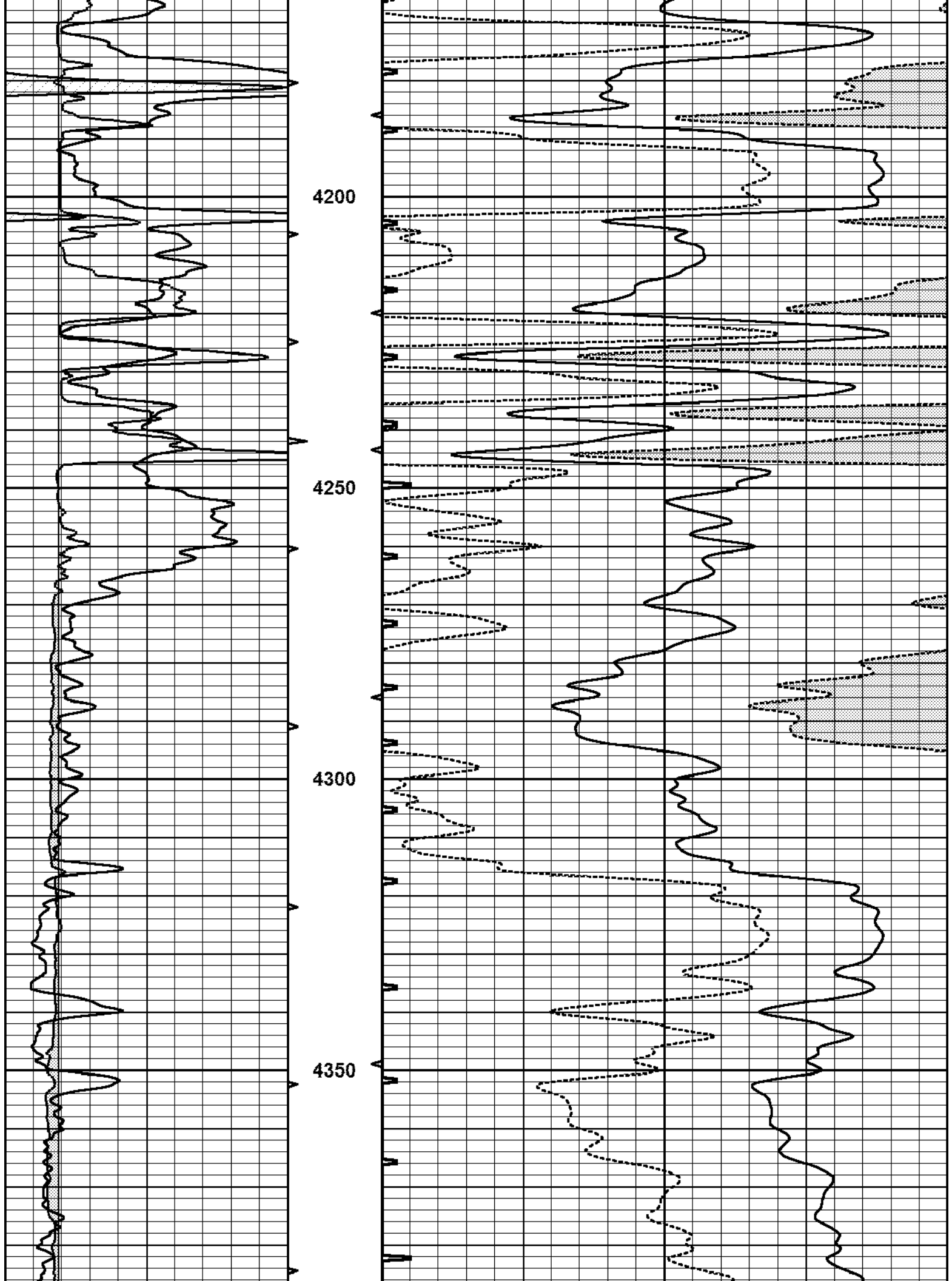


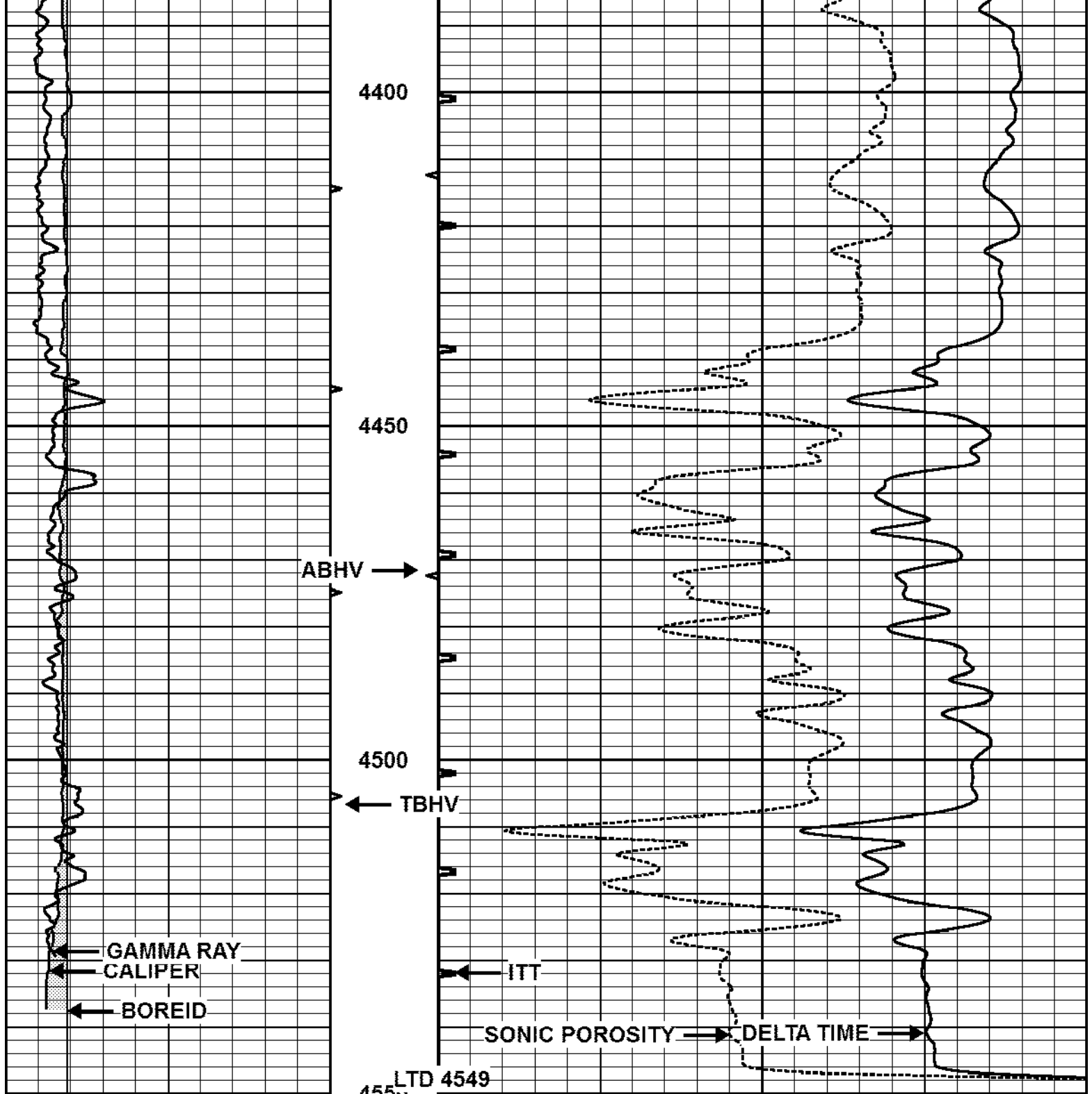












0	GAMMA RAY (GAPI)	150	ABHV	140	DELTA TIME (usec/ft)	40
6	CALIPER (in)	16	(ft3)	30	SONIC POROSITY (pu)	-10
10	0	0	ITT (msec)	20		
	TBHV					
	(ft3)					
	0	10				



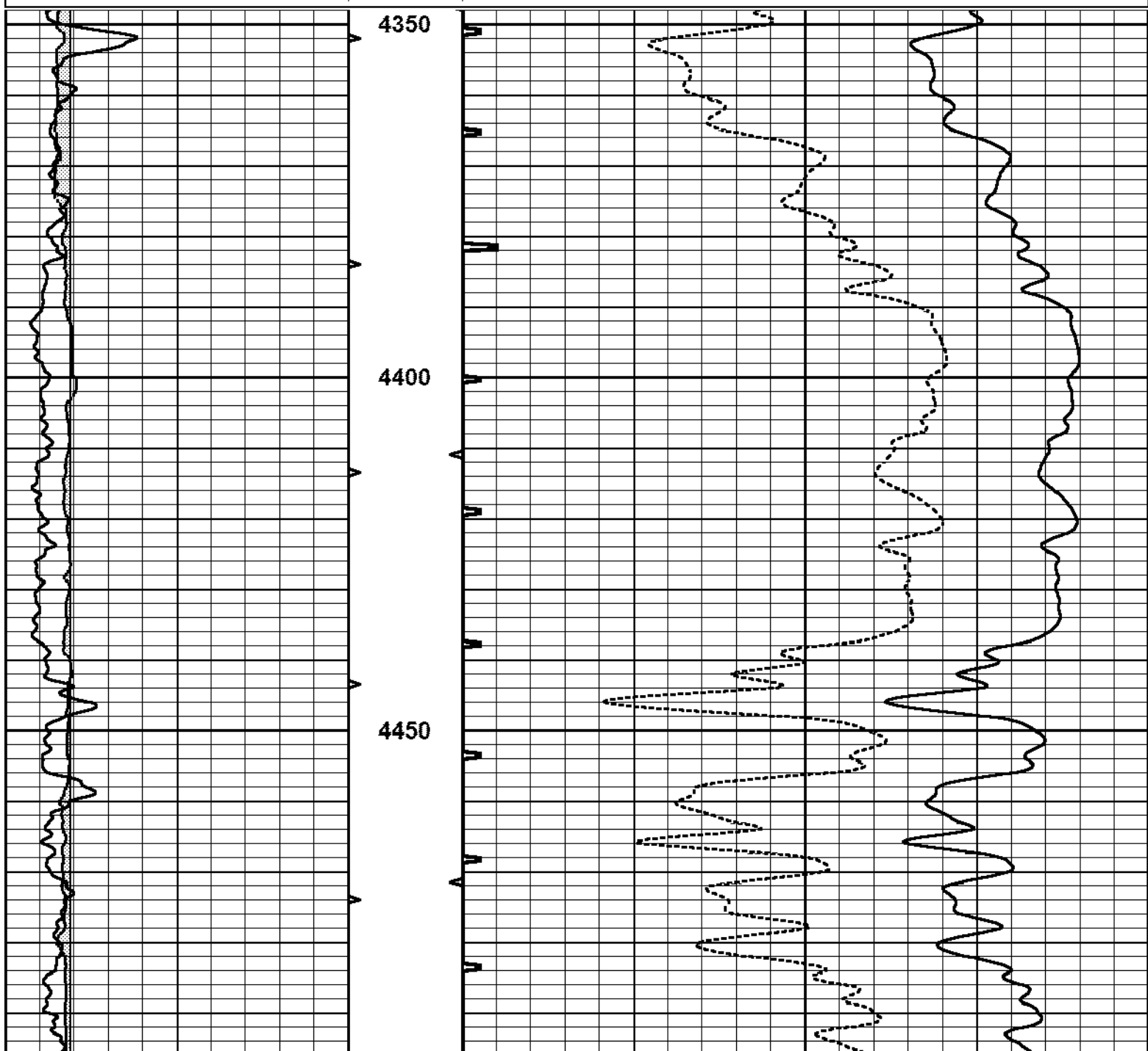
REPEAT SECTION

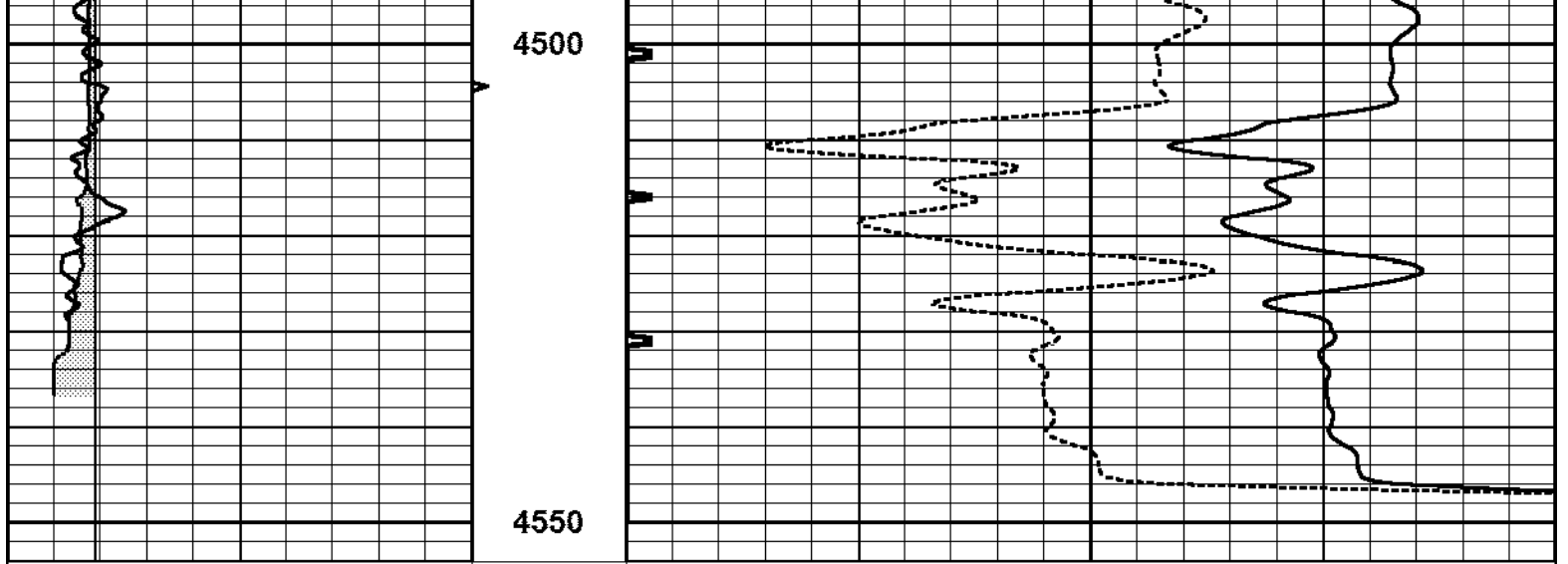
REPEAT SECTION



Database File 2373pe.db
 Dataset Pathname pass4RP
 Presentation Format _sit
 Dataset Creation Sun Mar 18 10:44:13 2018
 Charted by Depth in Feet scaled 1:240

0	GAMMA RAY (GAPI)	150	ABHV	140	DELTA TIME (usec/ft)	40
6	CALIPER (in)	16	(ft3)	30	SONIC POROSITY (pu)	-10
			10	0	ITT (msec)	20
			TBHV			
			(ft3)			
			0	10		





0	GAMMA RAY (GAPI)	150	ABHV	140	DELTA TIME (usec/ft)	40
6	CALIPER (in)	16	(ft3)	30	SONIC POROSITY (pu)	-10
			10	0	ITT (msec)	20
			TBHV			
			(ft3)			
			0	10		