

DUAL INDUCTION LOG

Company BEAR PETROLEUM, LLC
 Well STEJSKAL #1
 Field STEFFEN SOUTH
 County PAWNEE
 State KANSAS

Company BEAR PETROLEUM, LLC
 Well STEJSKAL #1
 Field STEFFEN SOUTH
 County PAWNEE State KANSAS

Location: API #: 15-145-21830-0000
 660' FNL & 660' FEL
 SEC 16 TWP 21S RGE 20W
 Permanent Datum GROUND LEVEL Elevation 2106
 Log Measured From KELLY BUSHING 6' A.G.L
 Drilling Measured From KELLY BUSHING
 Other Services CDL/CNL/MEI SONIC
 Elevation K.B. 2112 D.F. 2110 G.L. 2106

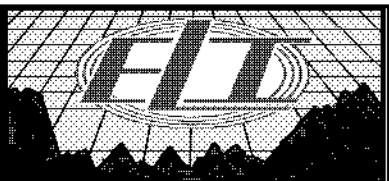
Date	03/18/18
Run Number	ONE
Depth Driller	4546
Depth Logger	4549
Bottom Logged Interval	4547
Top Log Interval	00
Casing Driller	8 5/8" @ 1247
Casing Logger	1247
Bit Size	7 7/8
Type Fluid in Hole	CHEMICAL MUD
Density / Viscosity	9.2/53
PH / Fluid Loss	9.5/9.8
Source of Sample	FLOWLINE
Rm @ Meas. Temp	.40 @ 68F
Rmf @ Meas. Temp	.30 @ 68F
Rmc @ Meas. Temp	.48 @ 68F
Source of Rmf / Rmc	MEASUREMENT
Rm @ BHT	.21 @ 121F
Time Circulation Stopped	2 HOURS
Time Logger on Bottom	///
Maximum Recorded Temperature	121F
Equipment Number	3802
Location	HAYS, KANSAS
Recorded By	GUS PFANENSTIEL
Witnessed By	ROD ANDERSON

>>> Fold Here >>>

All interpretations are opinions based on inferences from electrical or other measurements and we cannot and do not guarantee the accuracy or correctness of any interpretation, and we shall not, except in the case of gross or willful negligence on our part, be liable or responsible for any loss, costs, damages, or expenses incurred or sustained by anyone resulting from any interpretation made by any of our officers, agents or employees. These interpretations are also subject to our general terms and conditions set out in our current Price Schedule.

Comments

THANK YOU FOR USING ELI WIRELINE SERVICES, HAYS, KS. (785) 628-6395
 DIRECTIONS
 BURDETT GO TO RD. 345 NORTH 1 MILE,
 1/2 EAST, 3/4 NORTH, WEST INTO.

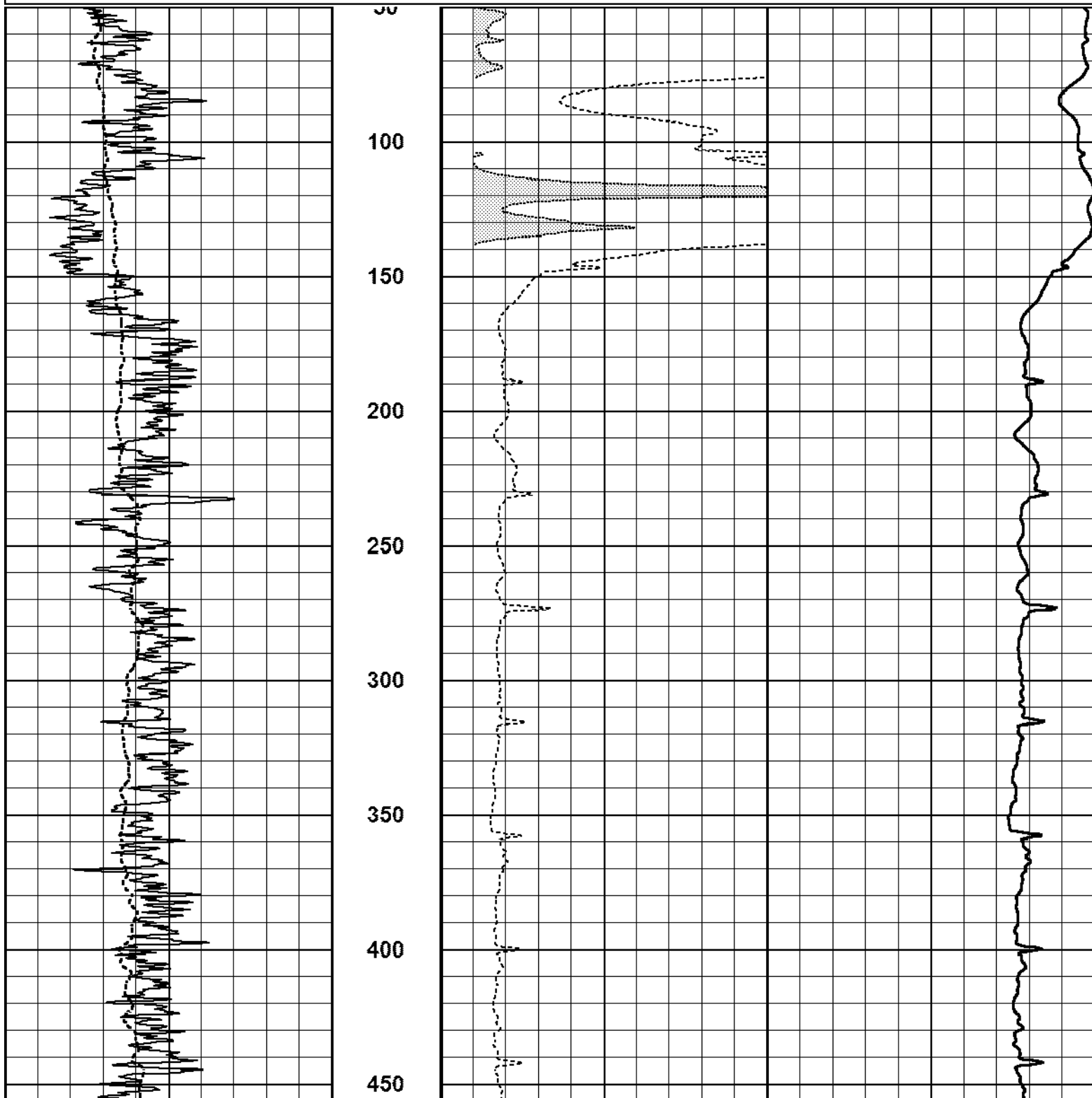


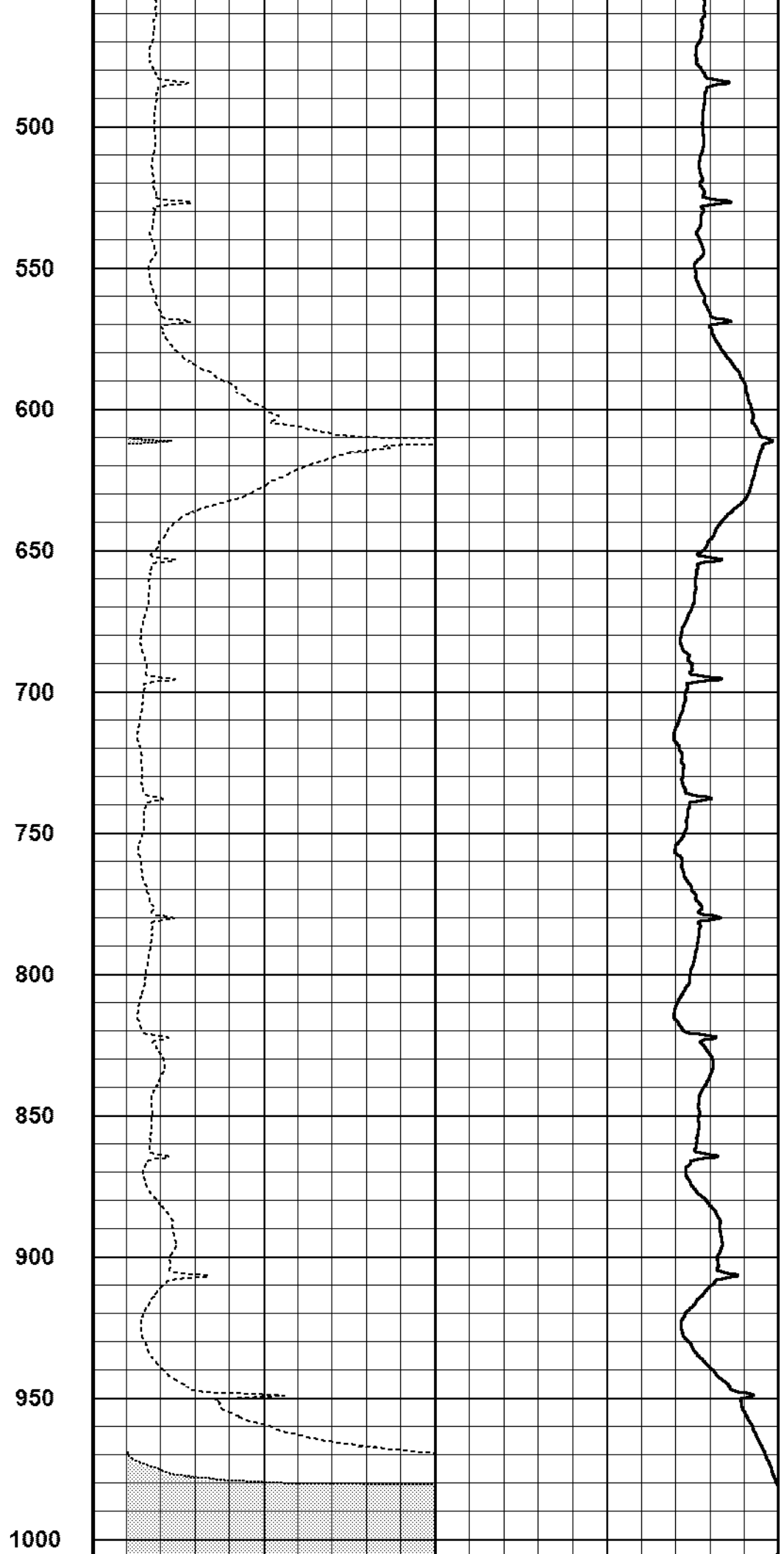
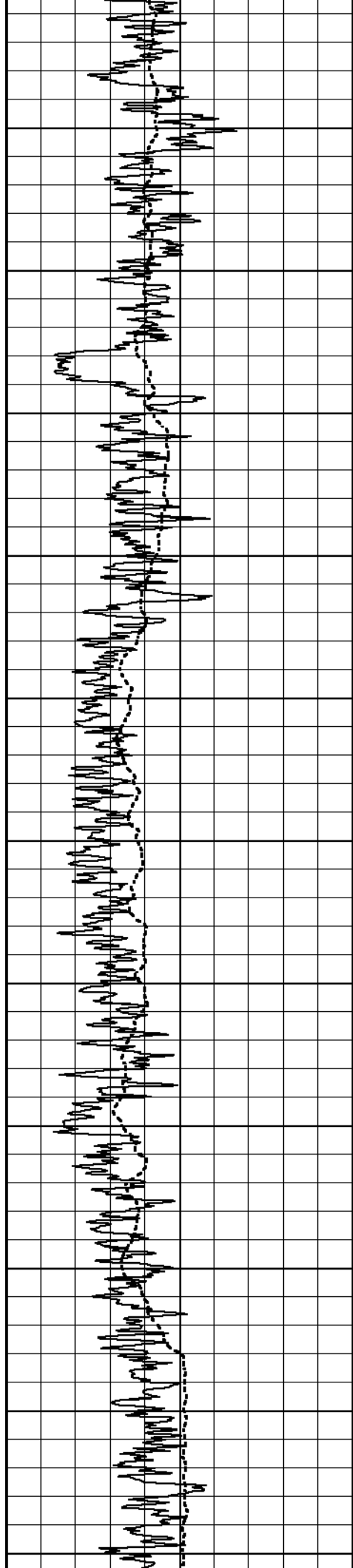
MAIN PASS

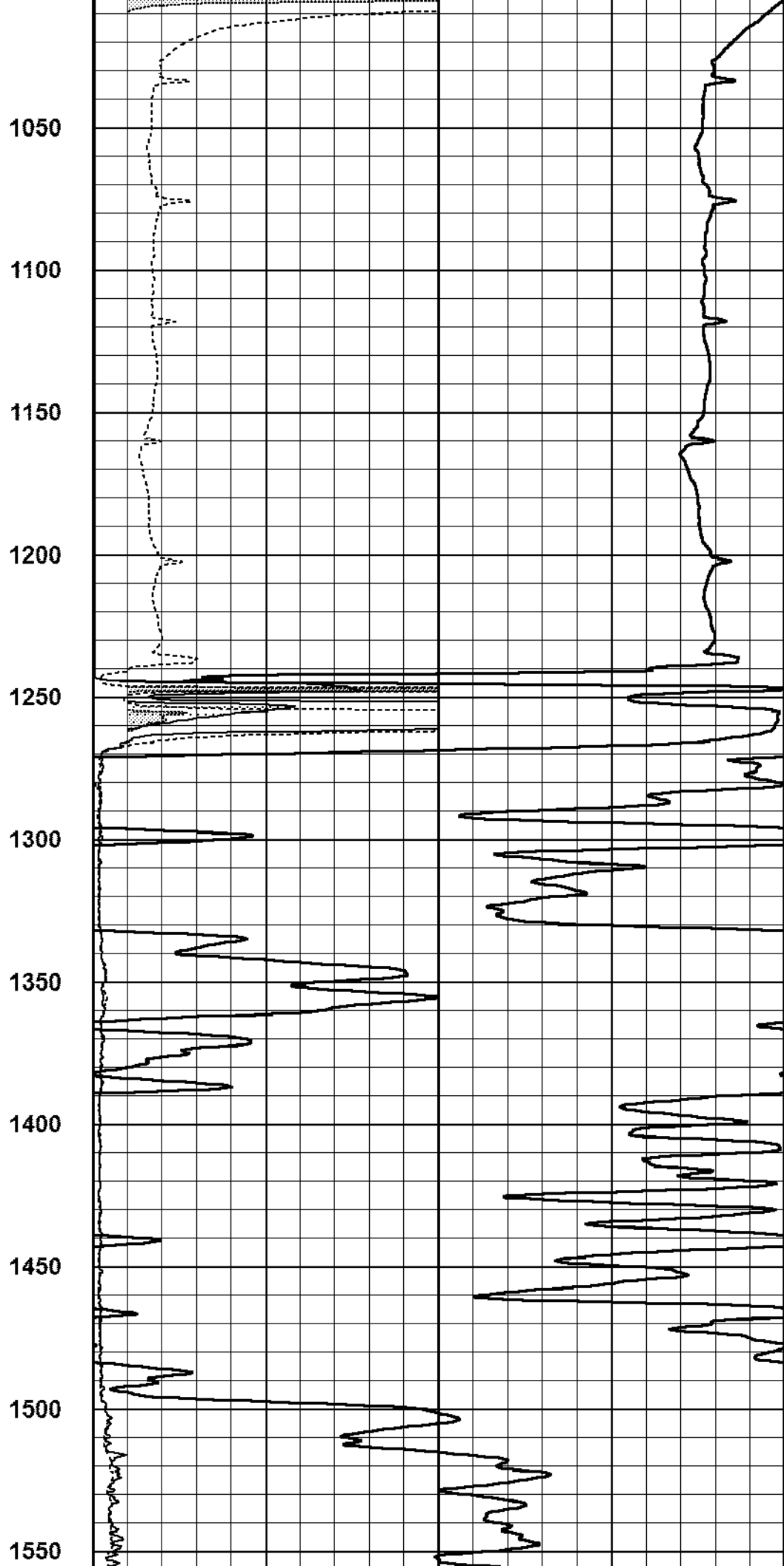
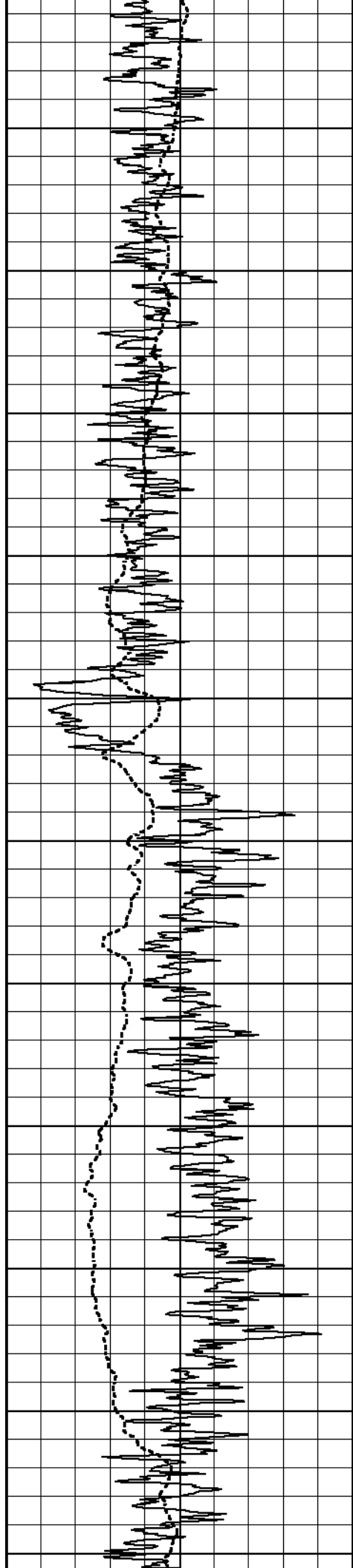
Database File 2373pe.db
 Dataset Pathname pass3MAIN
 Presentation Format _dil2
 Dataset Creation Sun Mar 18 09:53:16 2018
 Charted by Depth in Feet scaled 1:600

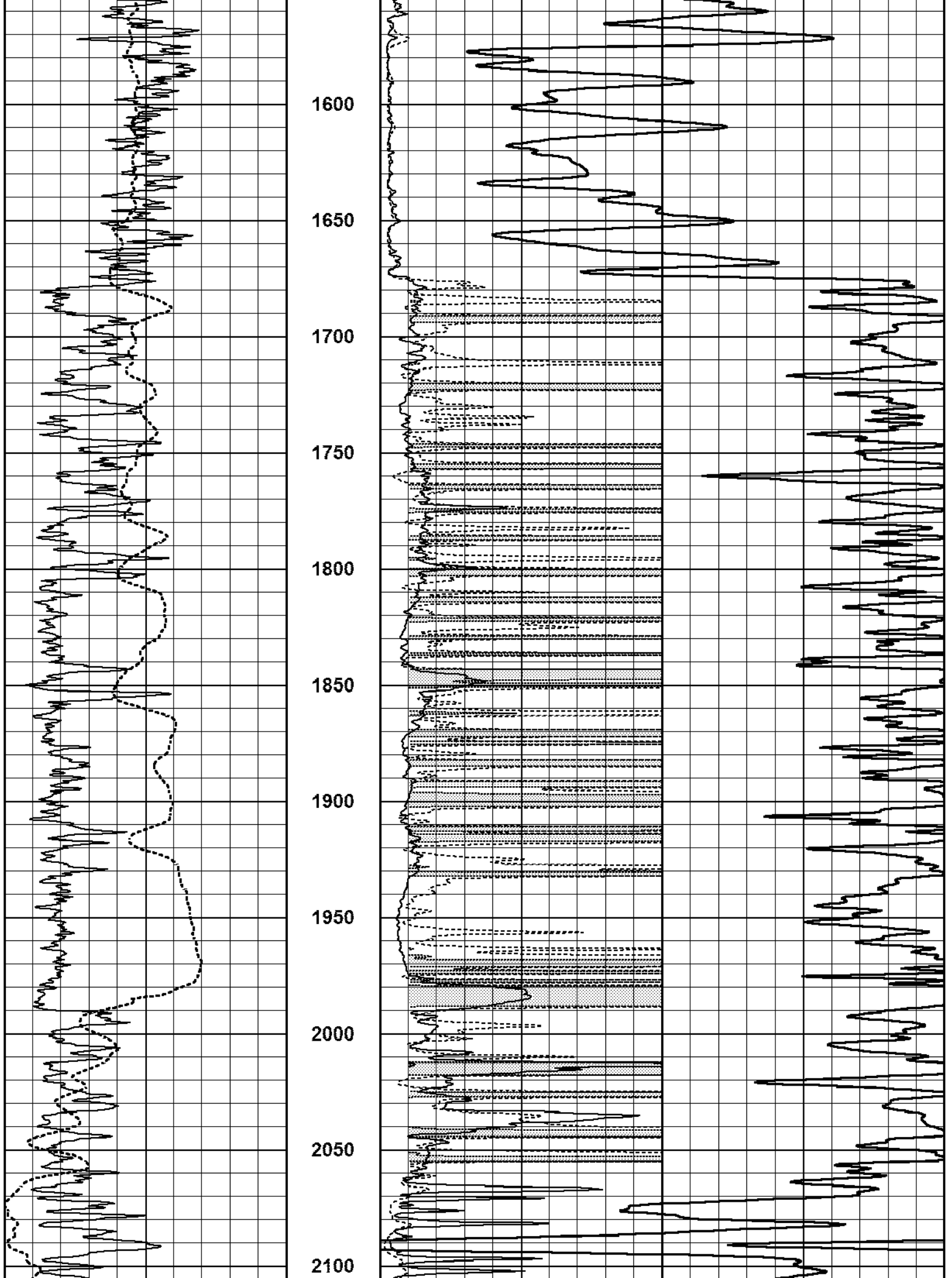
0 Gamma Ray (GAPI) 150
 -100 SP (mV) 100

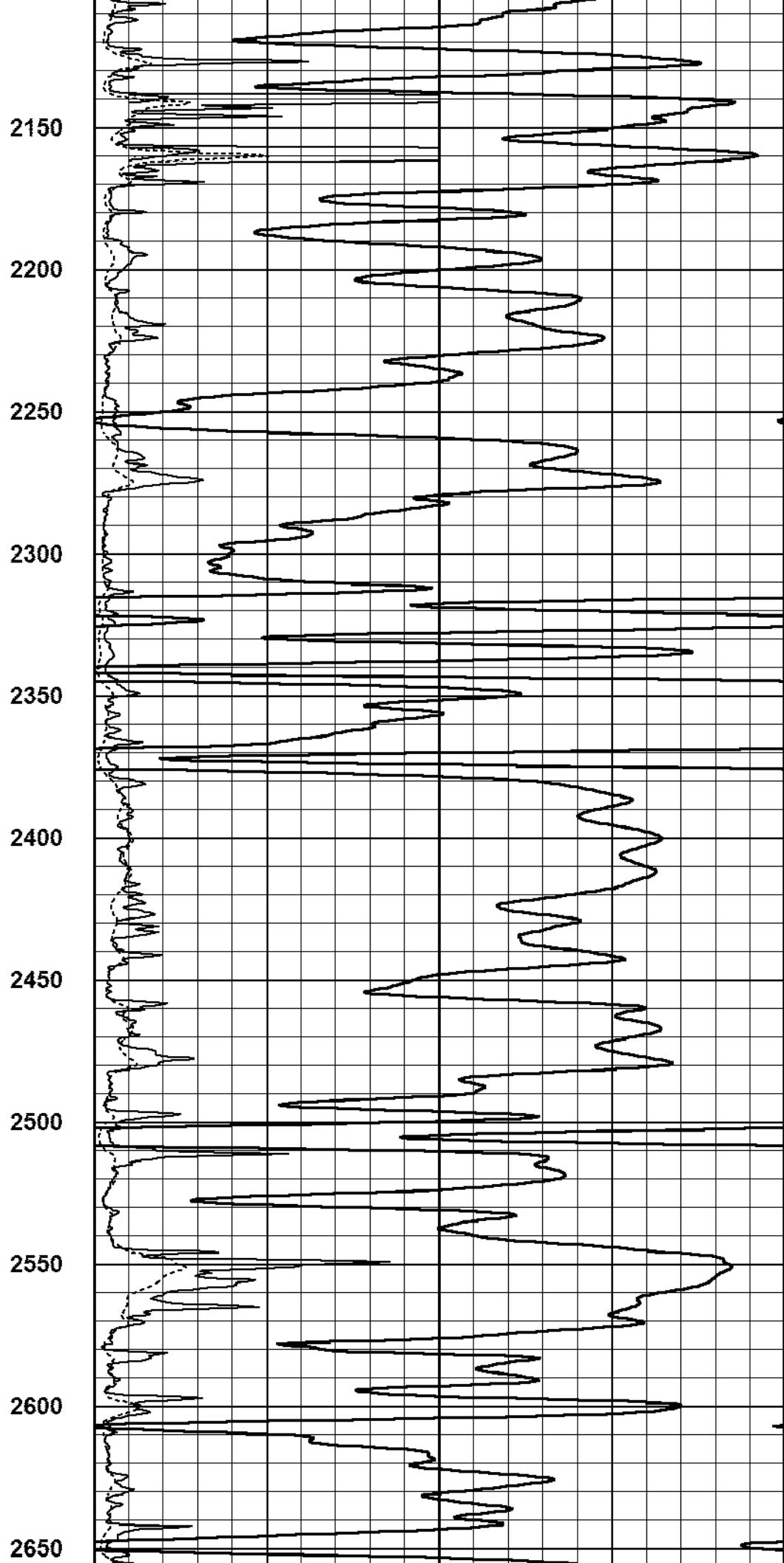
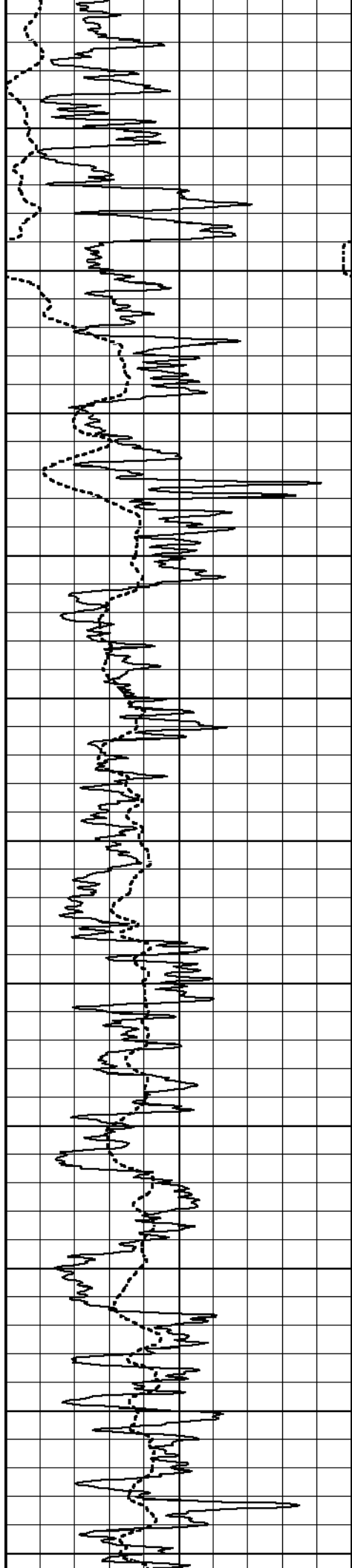
1000 CILD (mmho/m) 0
 0 RLL3 (Ohm-m) 50
 0 Deep Induction (Ohm-m) 50
 50 RILD X10 (Ohm-m) 500
 50 RLL3 X10 (Ohm-m) 500

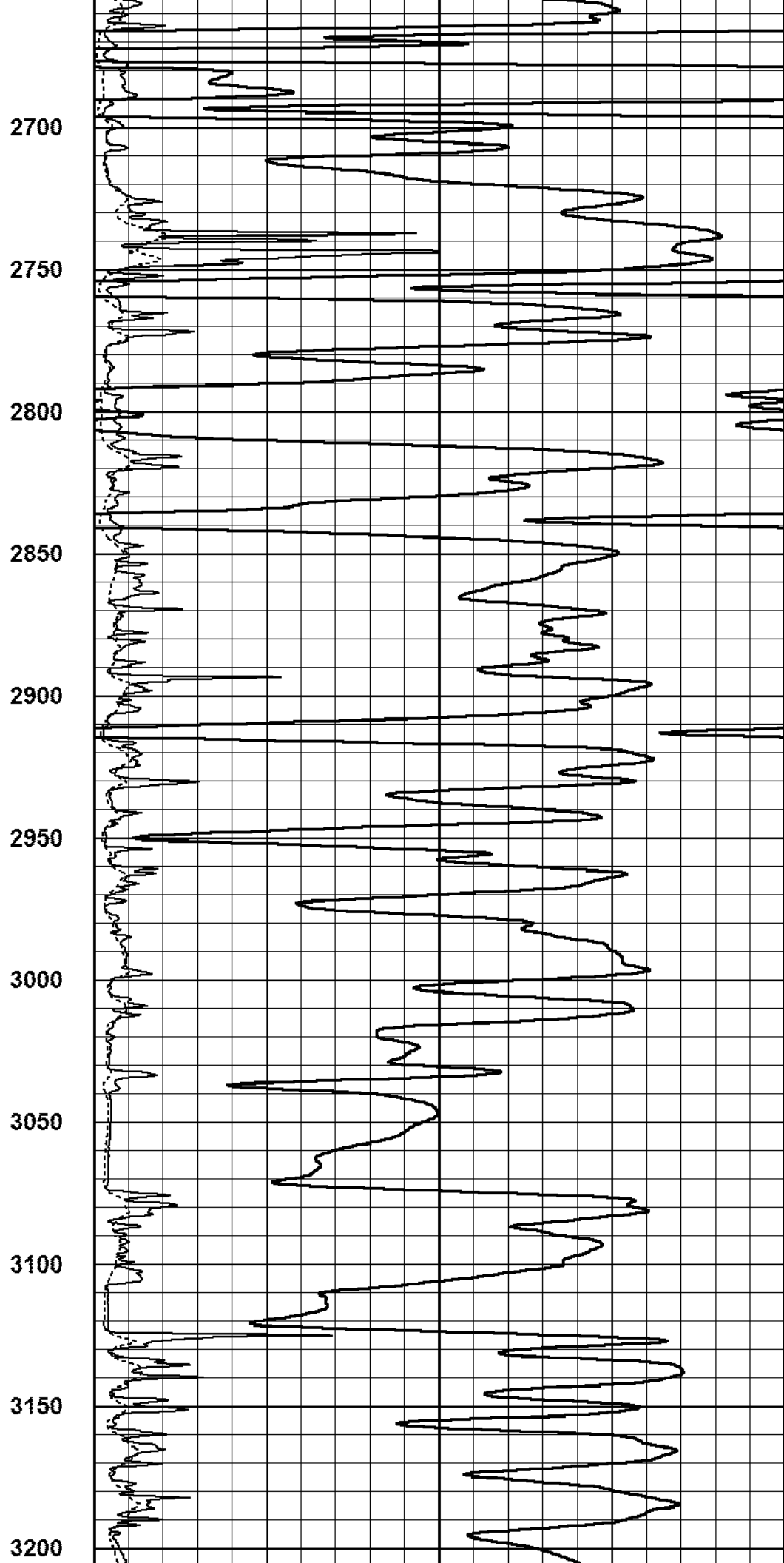
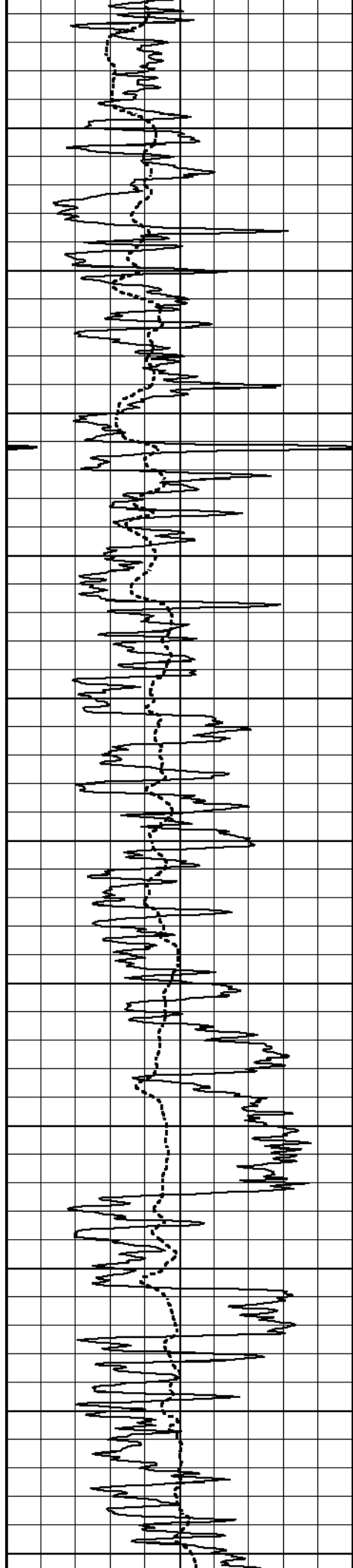


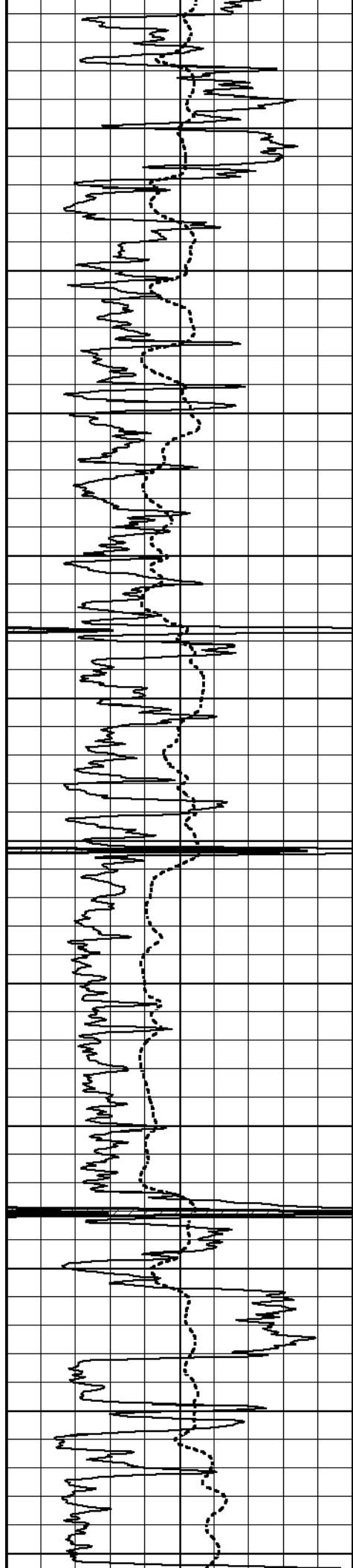




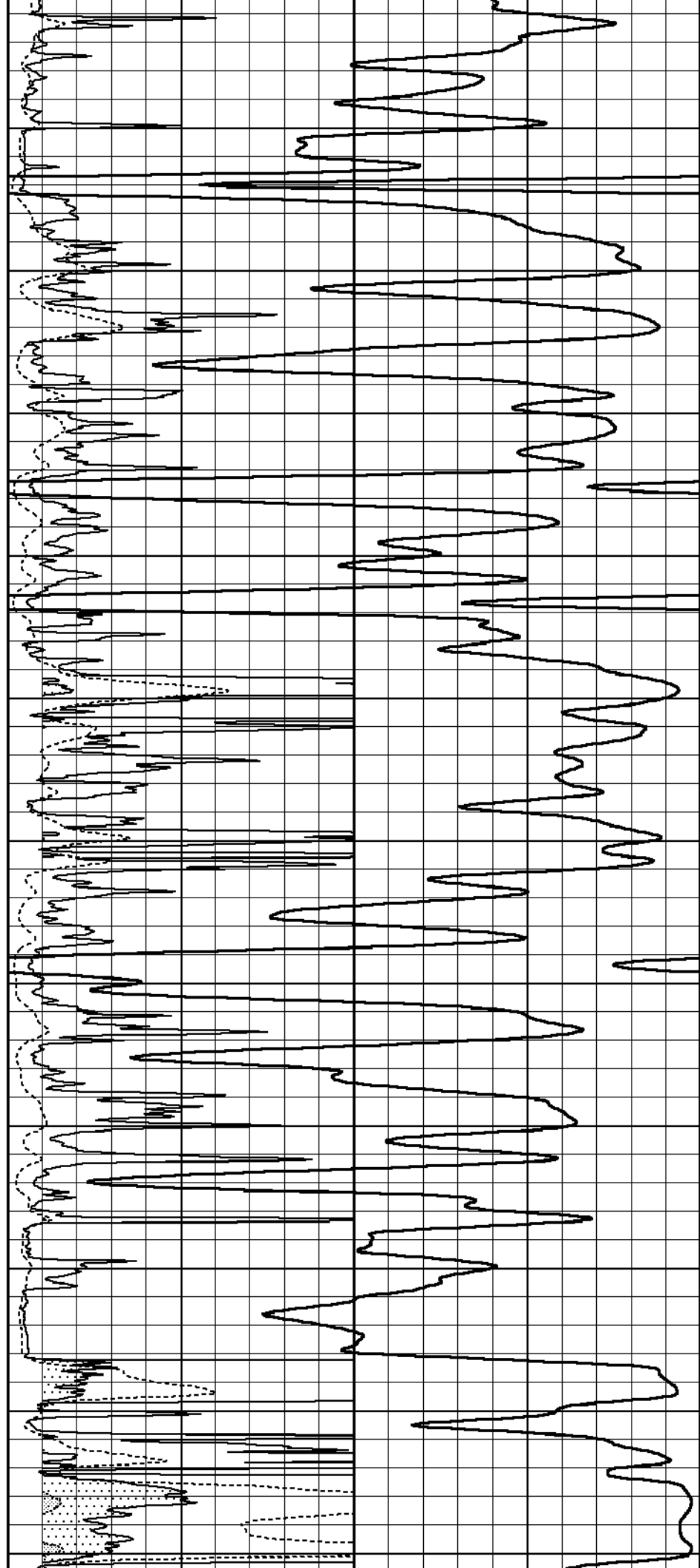


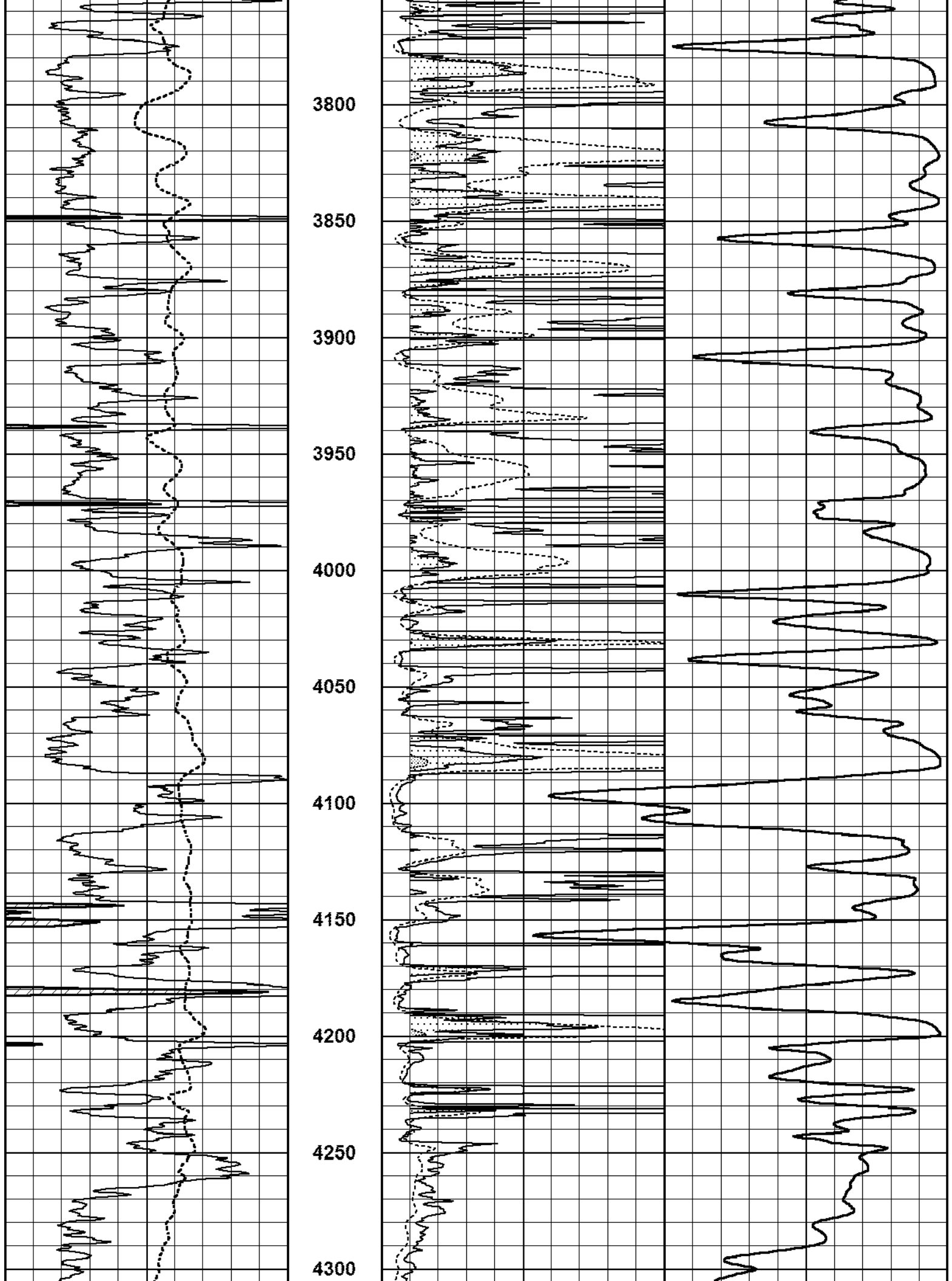


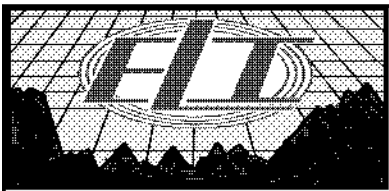
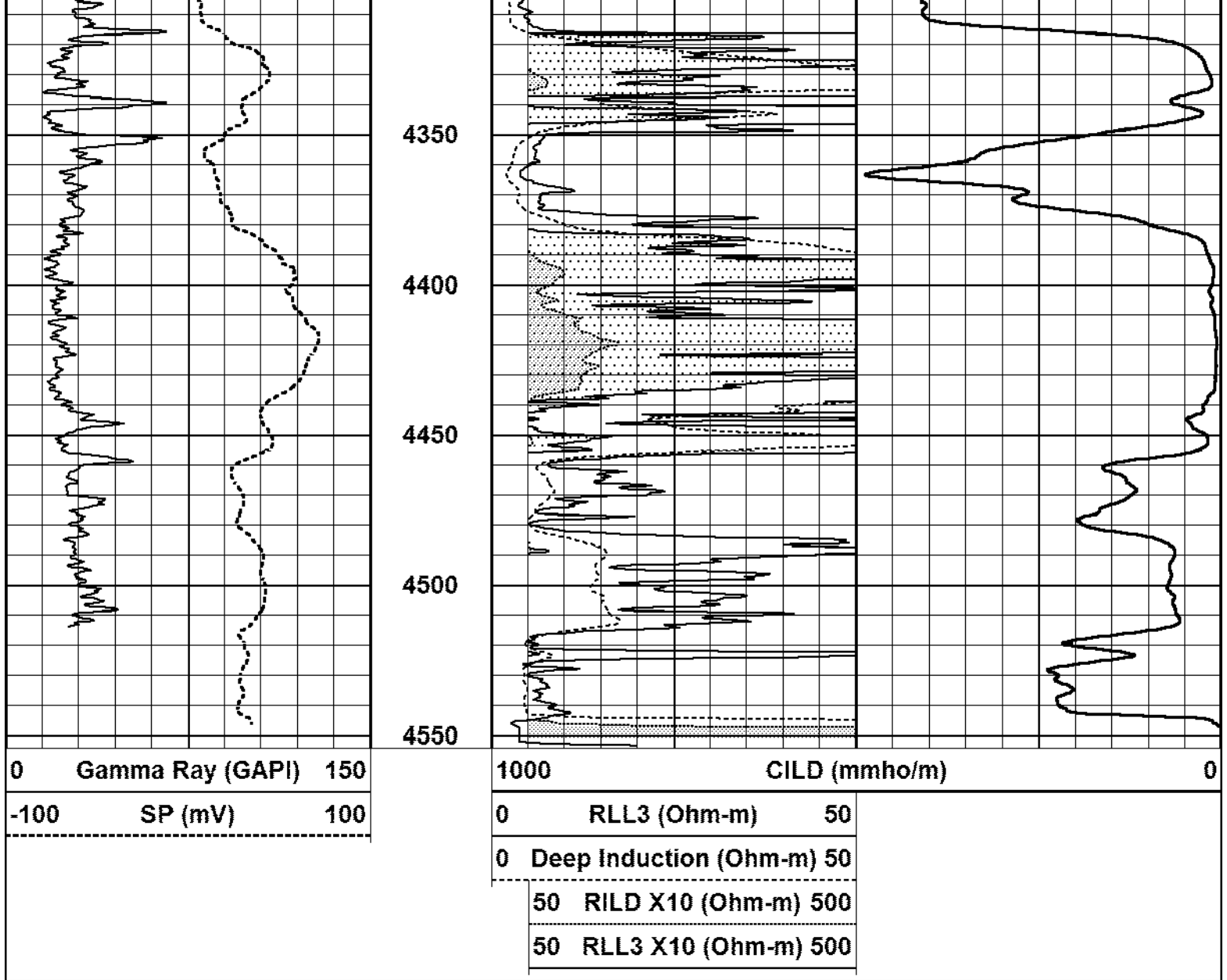




3250
3300
3350
3400
3450
3500
3550
3600
3650
3700
3750



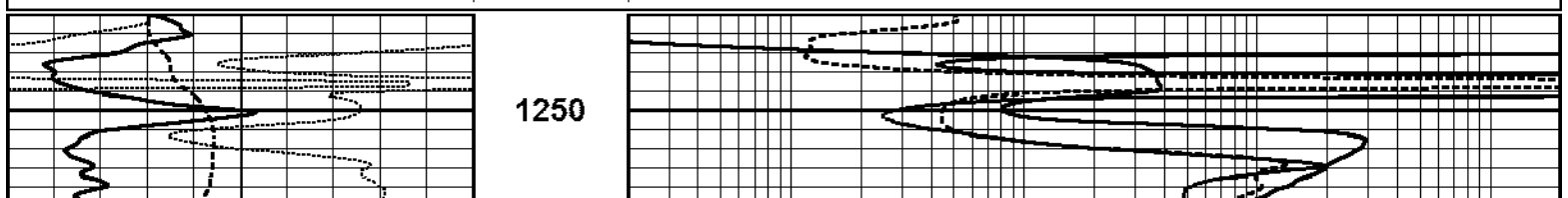


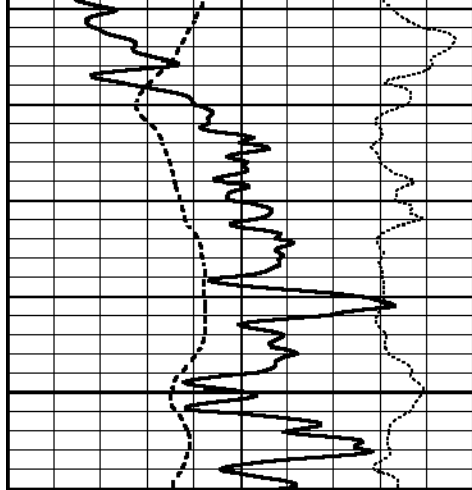


MAIN PASS

Database File 2373pe.db
 Dataset Pathname pass3MAIN
 Presentation Format _dil
 Dataset Creation Sun Mar 18 09:53:16 2018
 Charted by Depth in Feet scaled 1:240

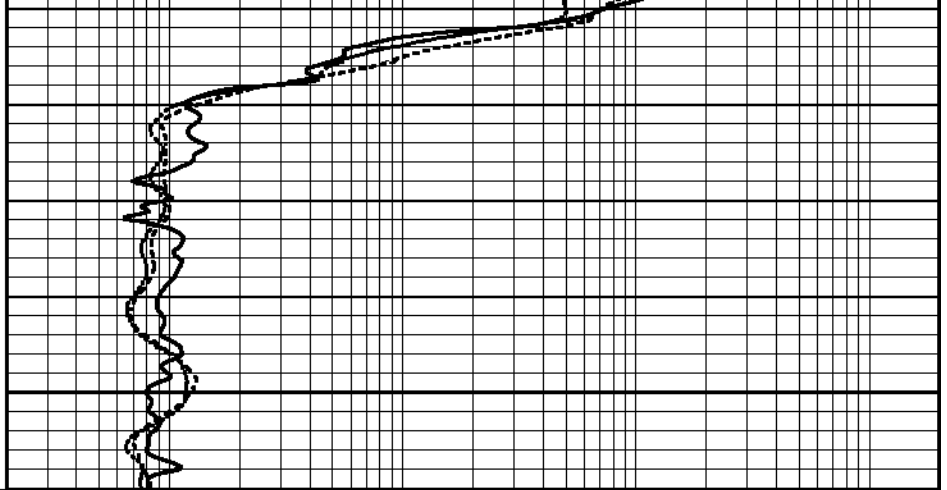
0	GAMMA RAY (GAPI)	150	0.2	SHALLOW GUARD (Ohm-m)	2000
-250	Rxo/Rt	50	0.2	MEDIUM INDUCTION (Ohm-m)	2000
-100	SP (mV)	100	0.2	DEEP INDUCTION (Ohm-m)	2000



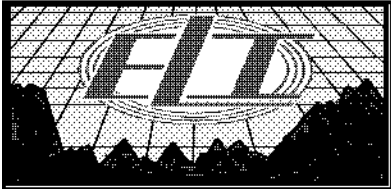


1300

0	GAMMA RAY (GAPI)	150
-250	Rxo/Rt	50
-100	SP (mV)	100



0.2	SHALLOW GUARD (Ohm-m)	2000
0.2	MEDIUM INDUCTION (Ohm-m)	2000
0.2	DEEP INDUCTION (Ohm-m)	2000

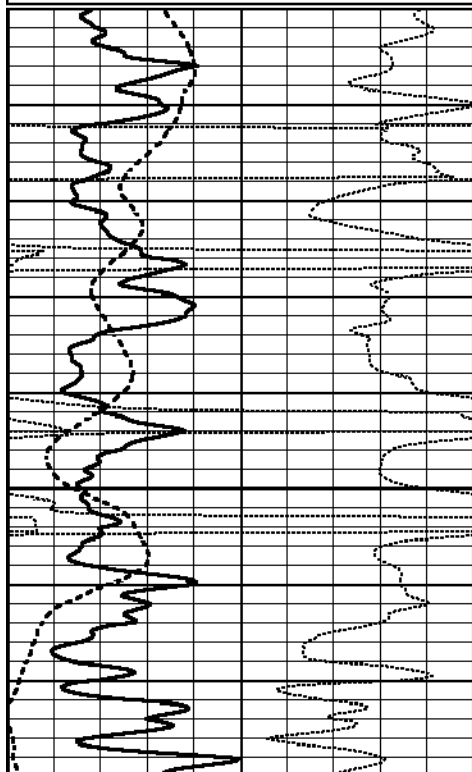


MAIN PASS

Database File 2373pe.db
 Dataset Pathname pass3MAIN
 Presentation Format _dil
 Dataset Creation Sun Mar 18 09:53:16 2018
 Charted by Depth in Feet scaled 1:240

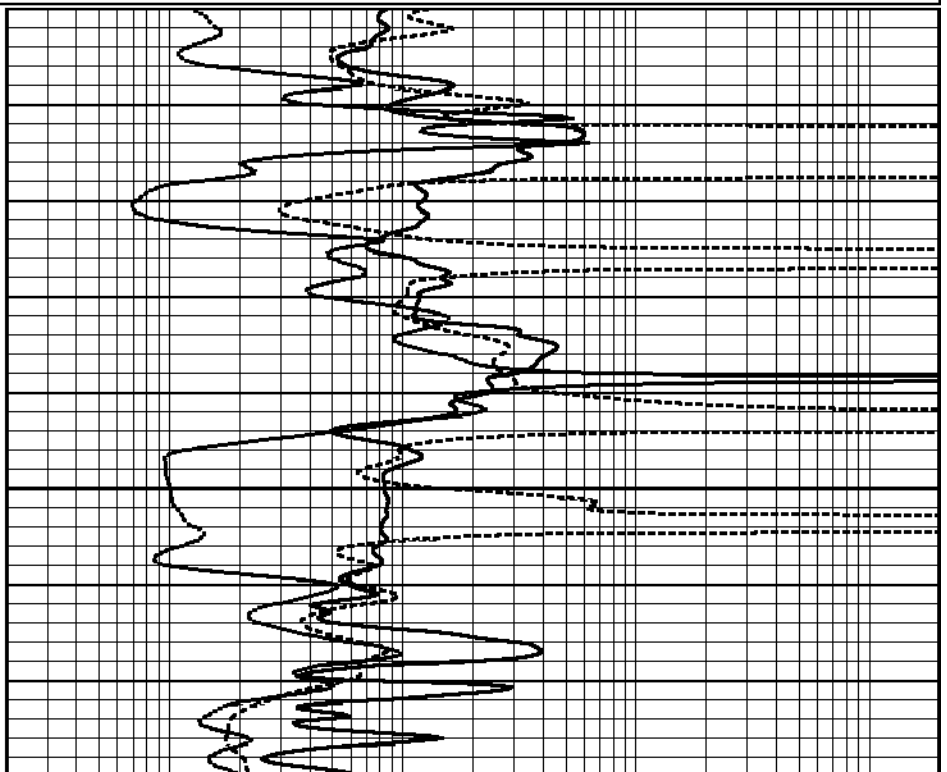
0	GAMMA RAY (GAPI)	150
-250	Rxo/Rt	50
-100	SP (mV)	100

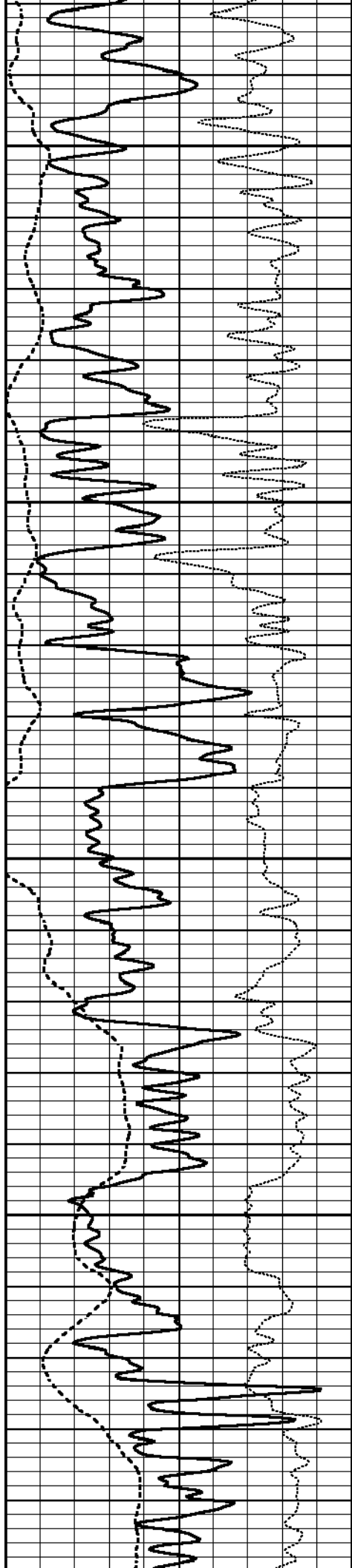
0.2	SHALLOW GUARD (Ohm-m)	2000
0.2	MEDIUM INDUCTION (Ohm-m)	2000
0.2	DEEP INDUCTION (Ohm-m)	2000



2000

2050





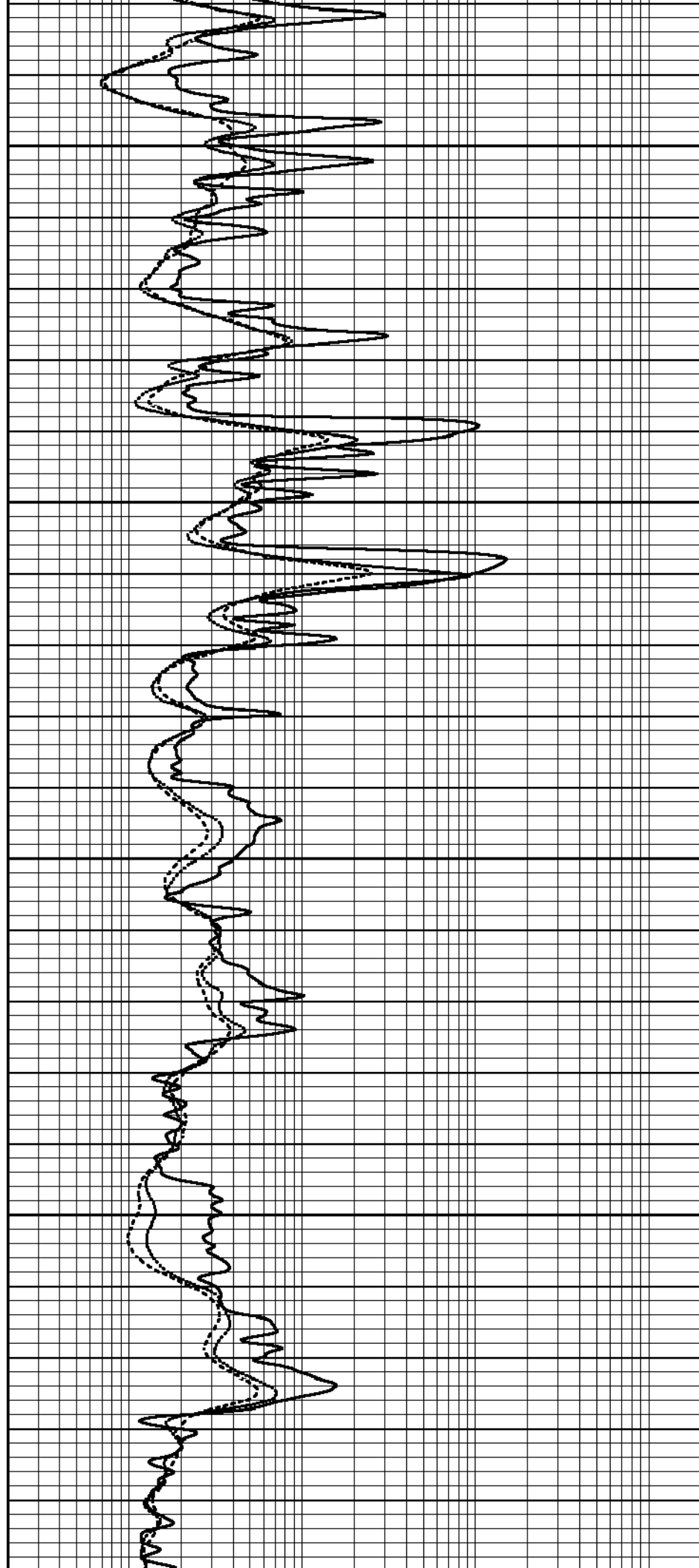
2100

2150

2200

2250

2300



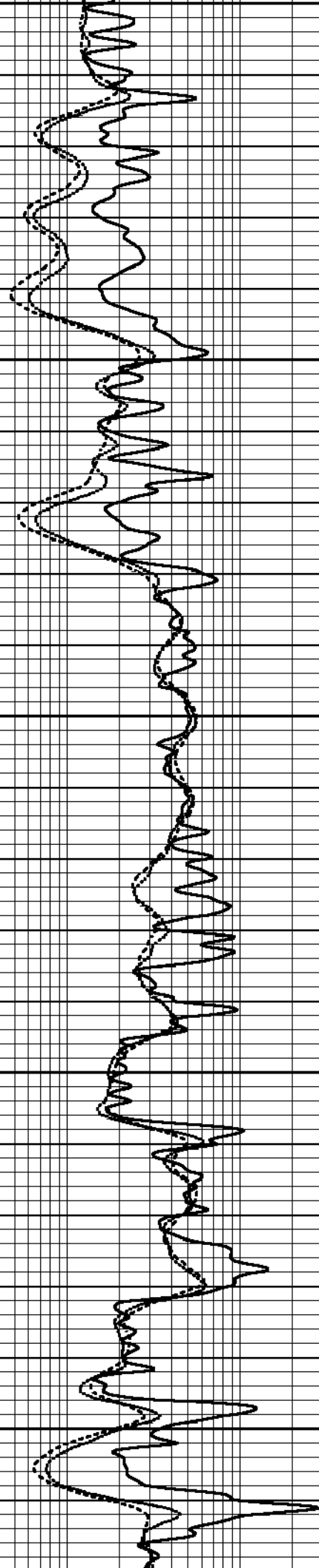
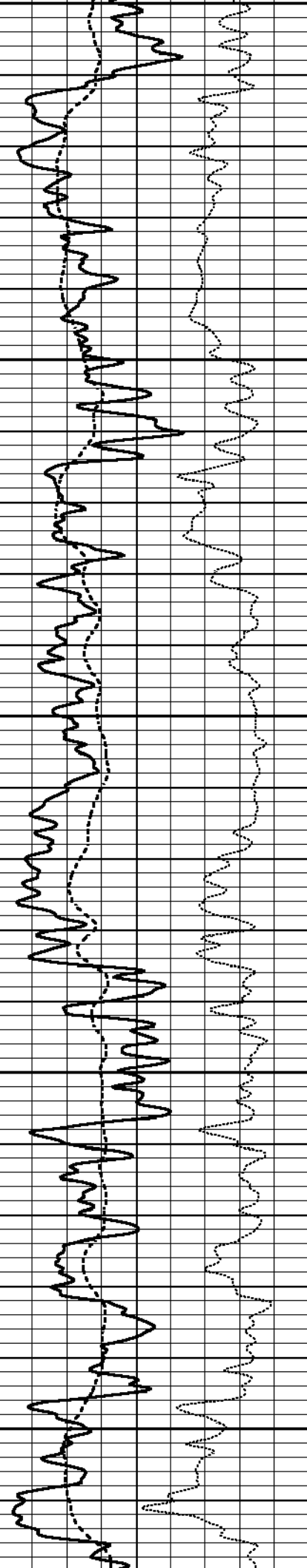
2300

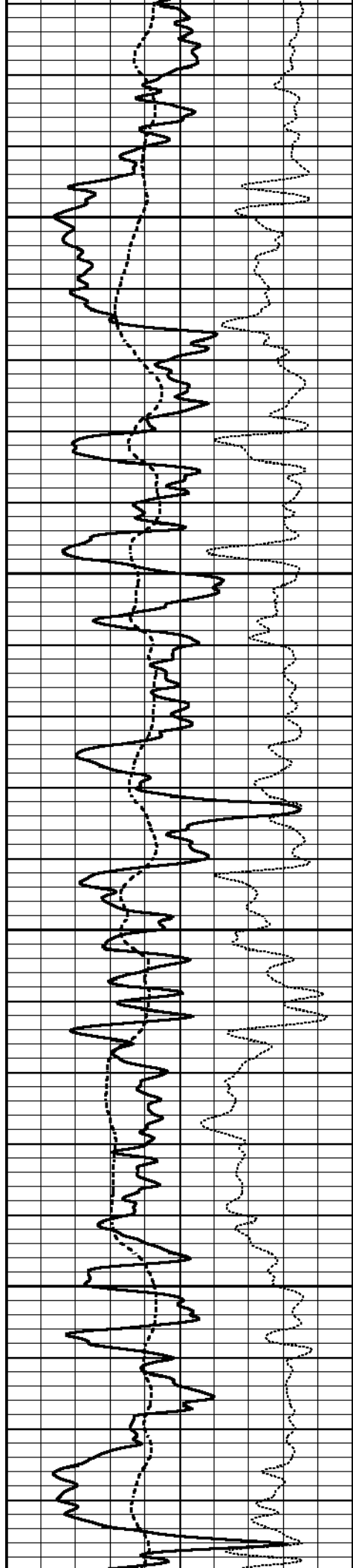
2350

2400

2450

2500



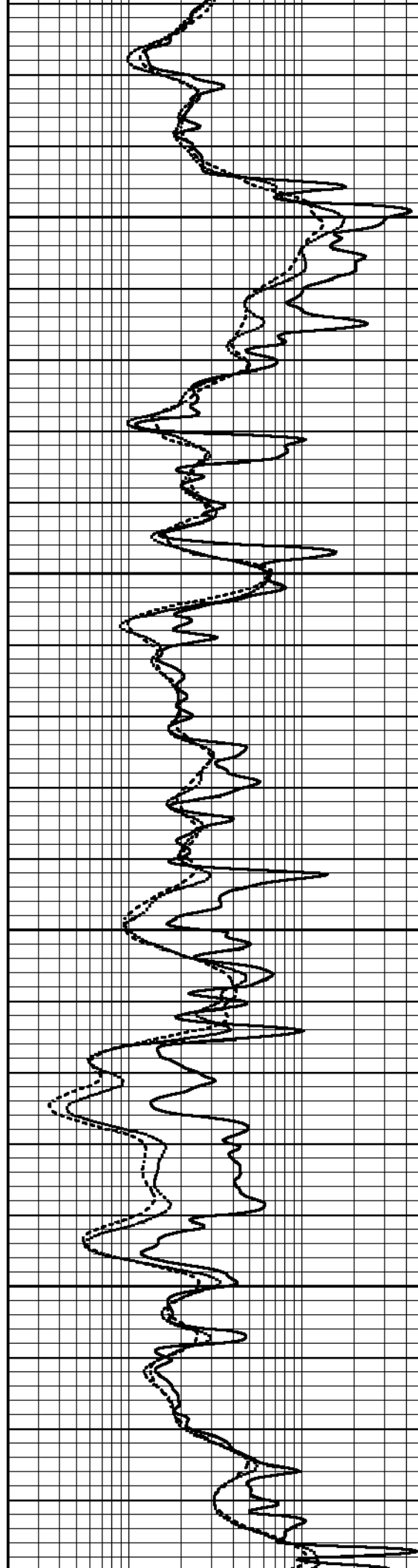


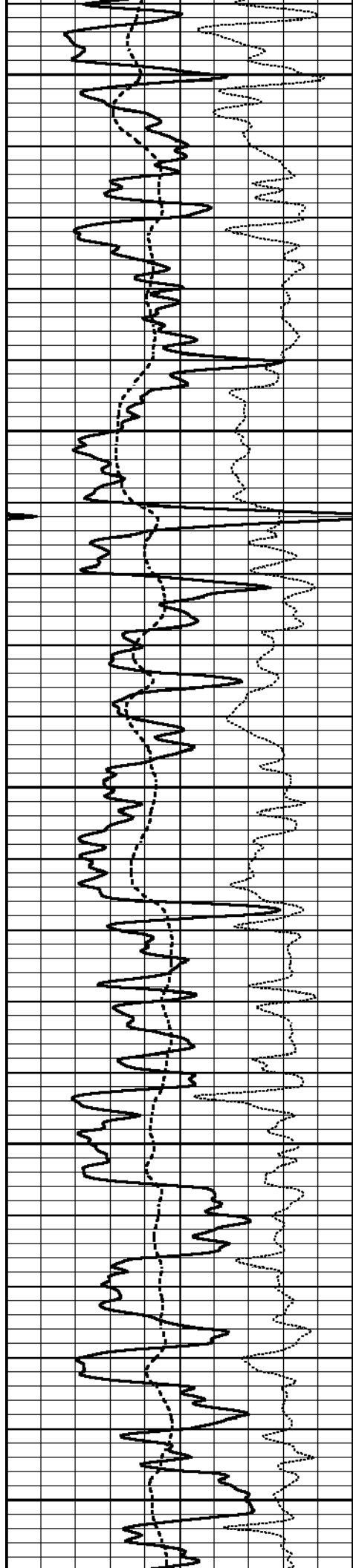
2550

2600

2650

2700





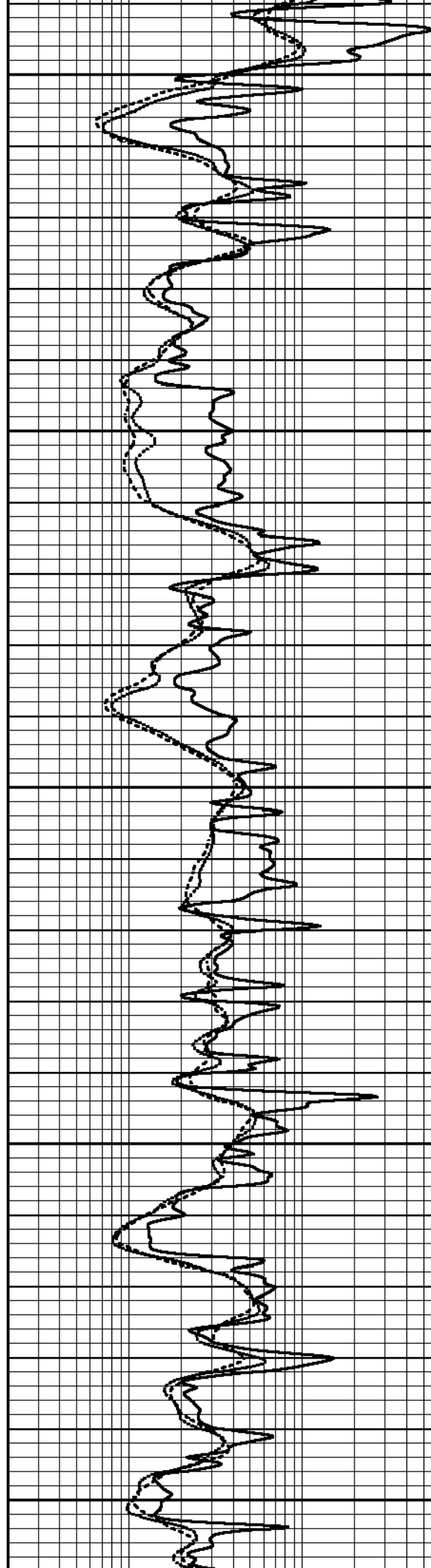
2750

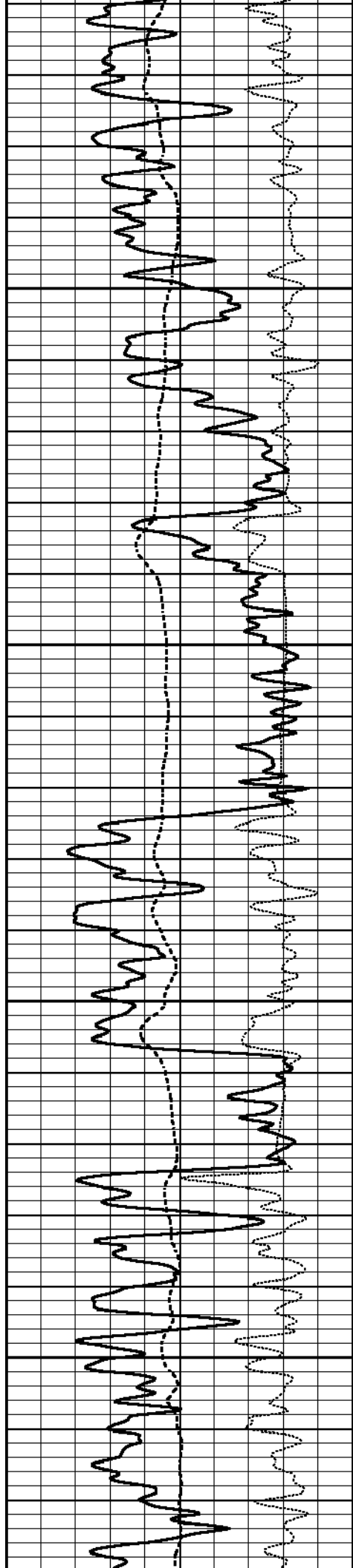
2800

2850

2900

2950



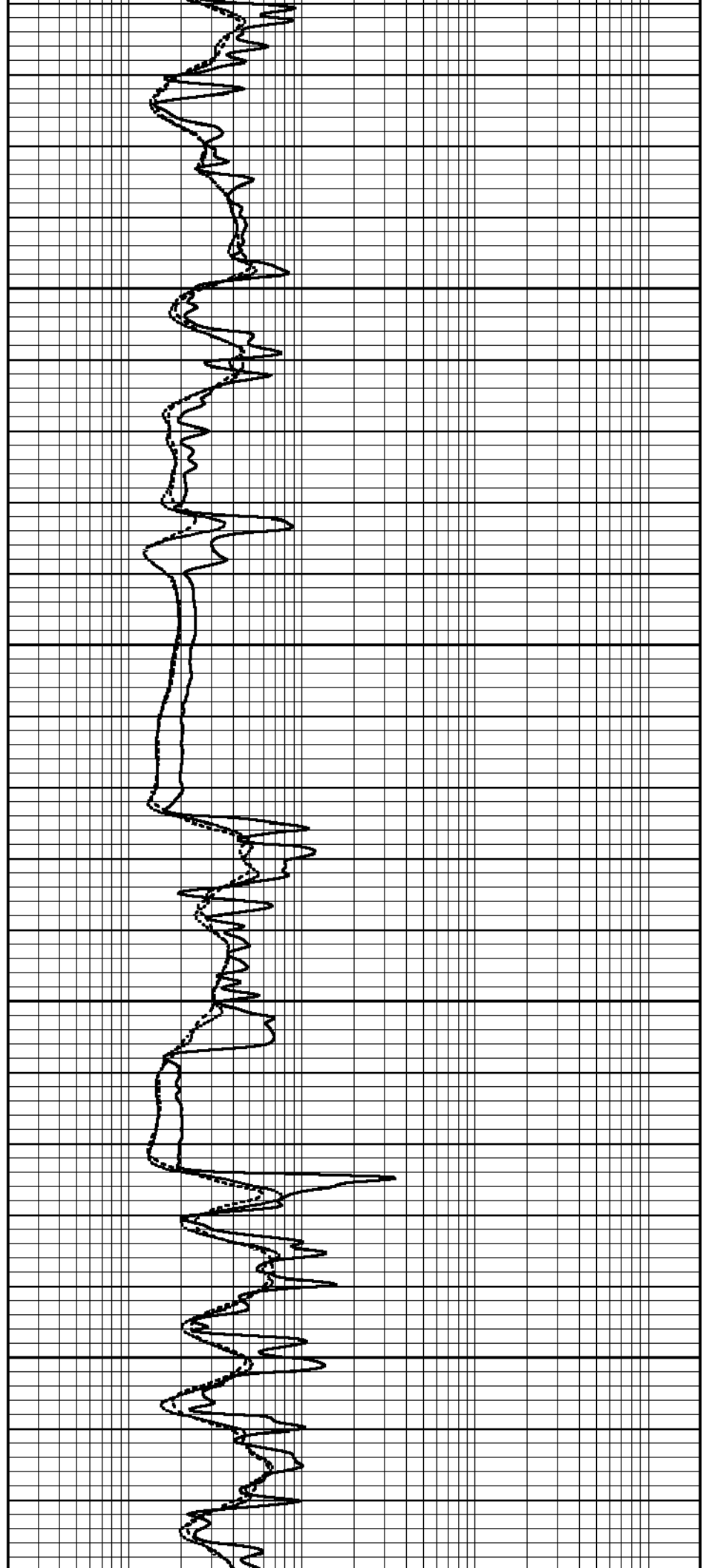


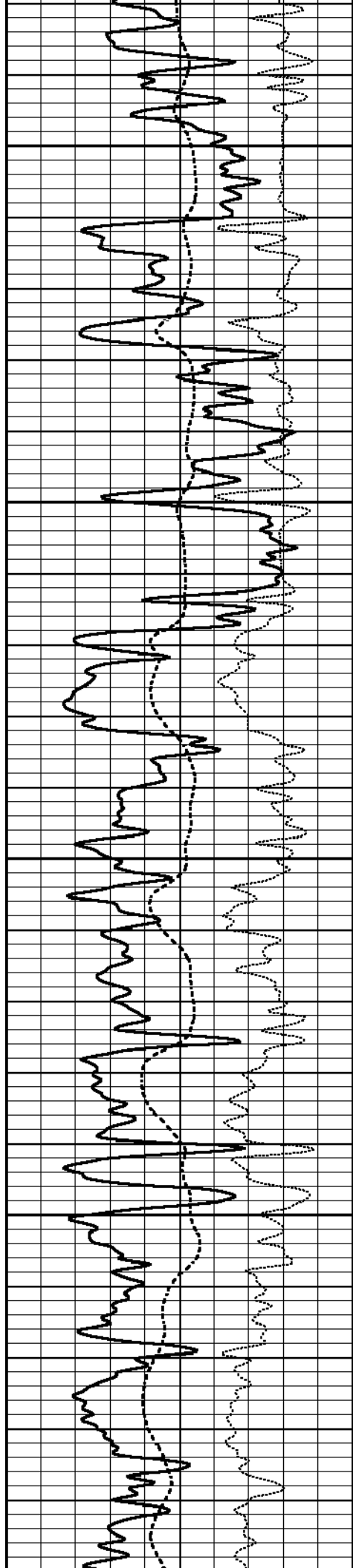
3000

3050

3100

3150





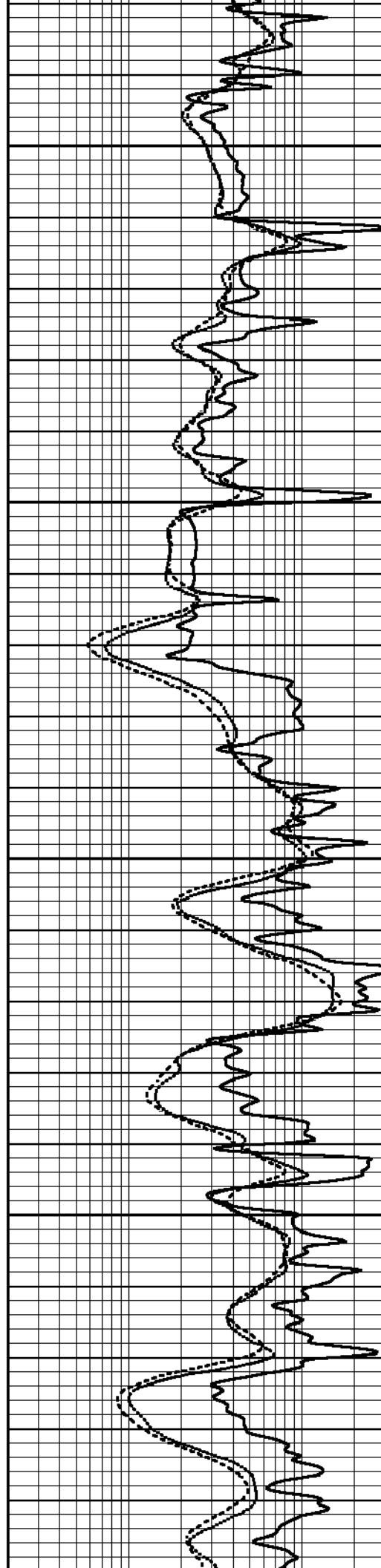
3200

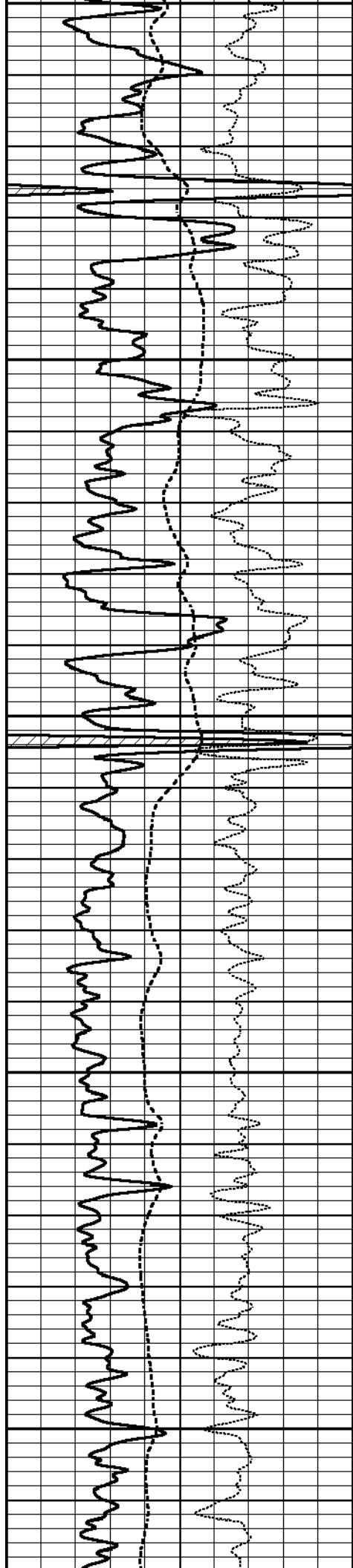
3250

3300

3350

3400





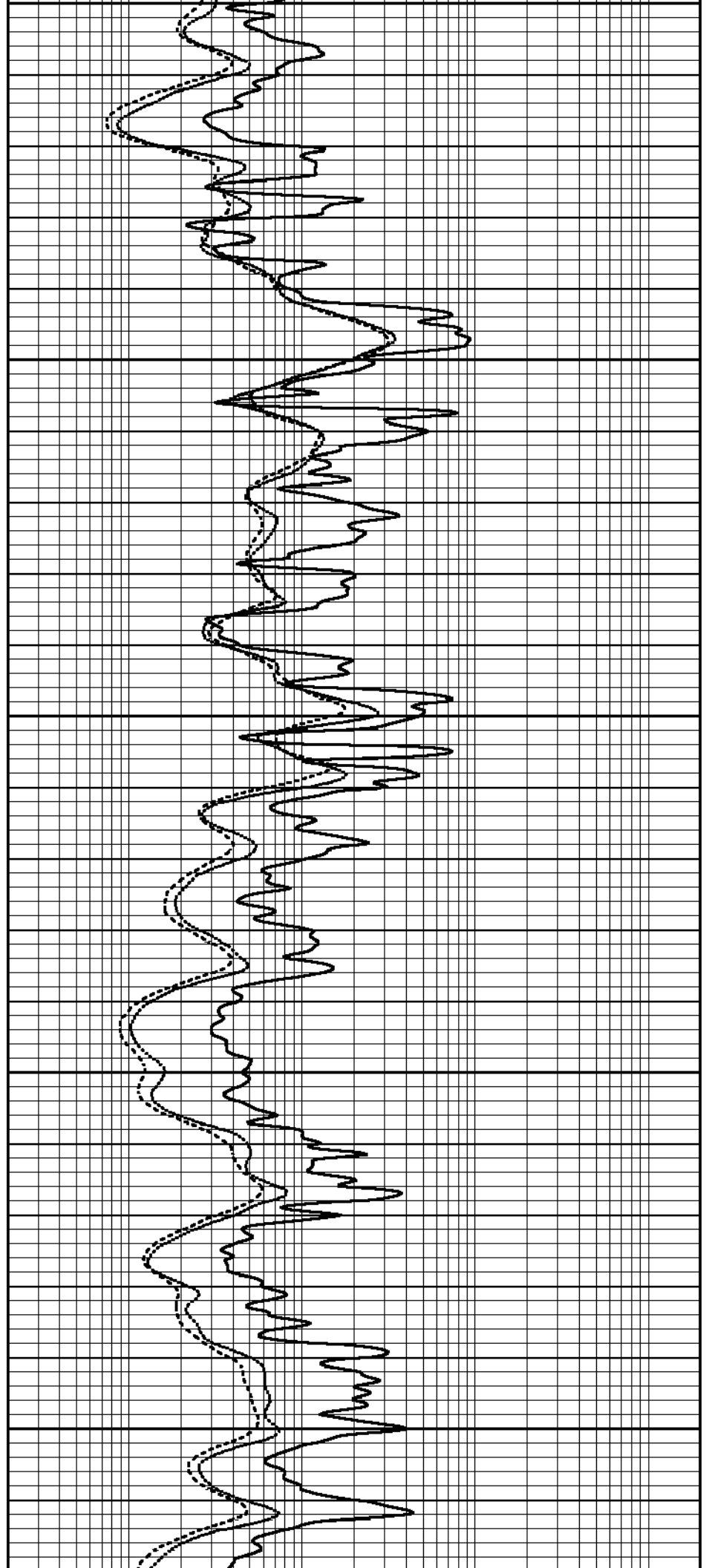
3400

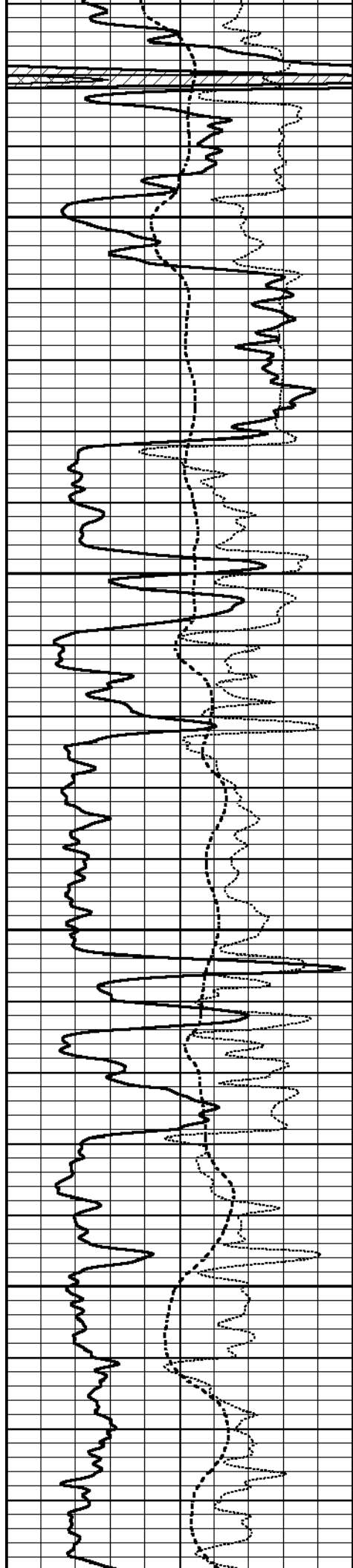
3450

3500

3550

3600



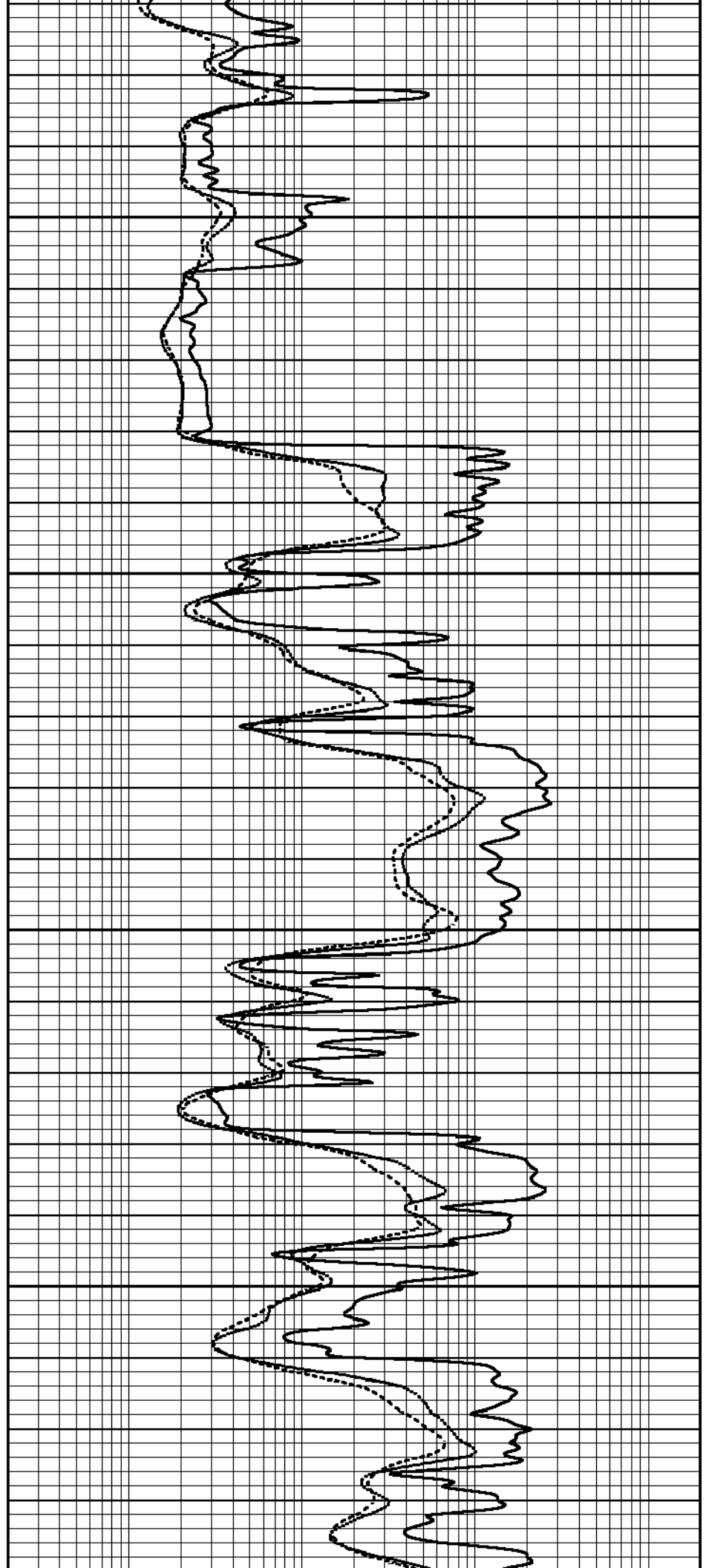


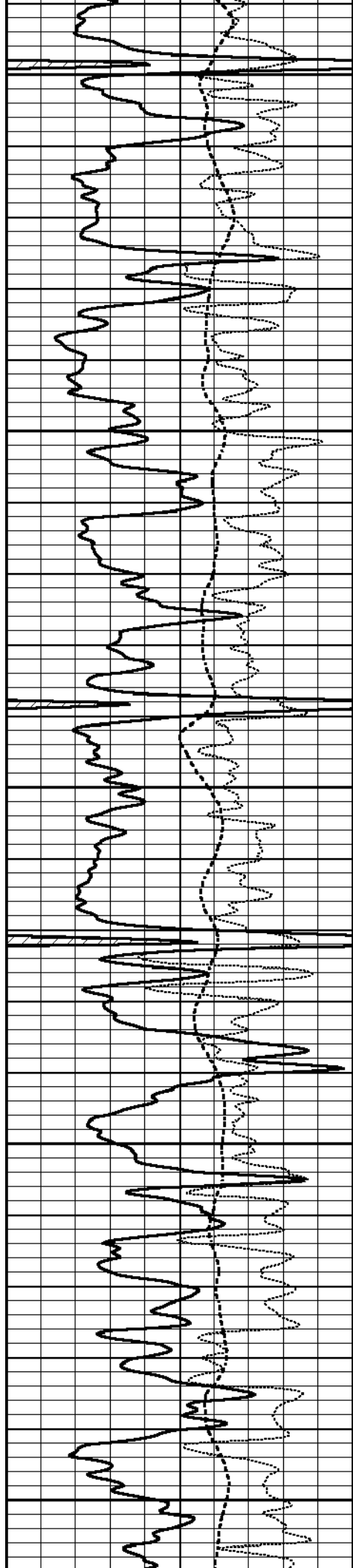
3650

3700

3750

3800





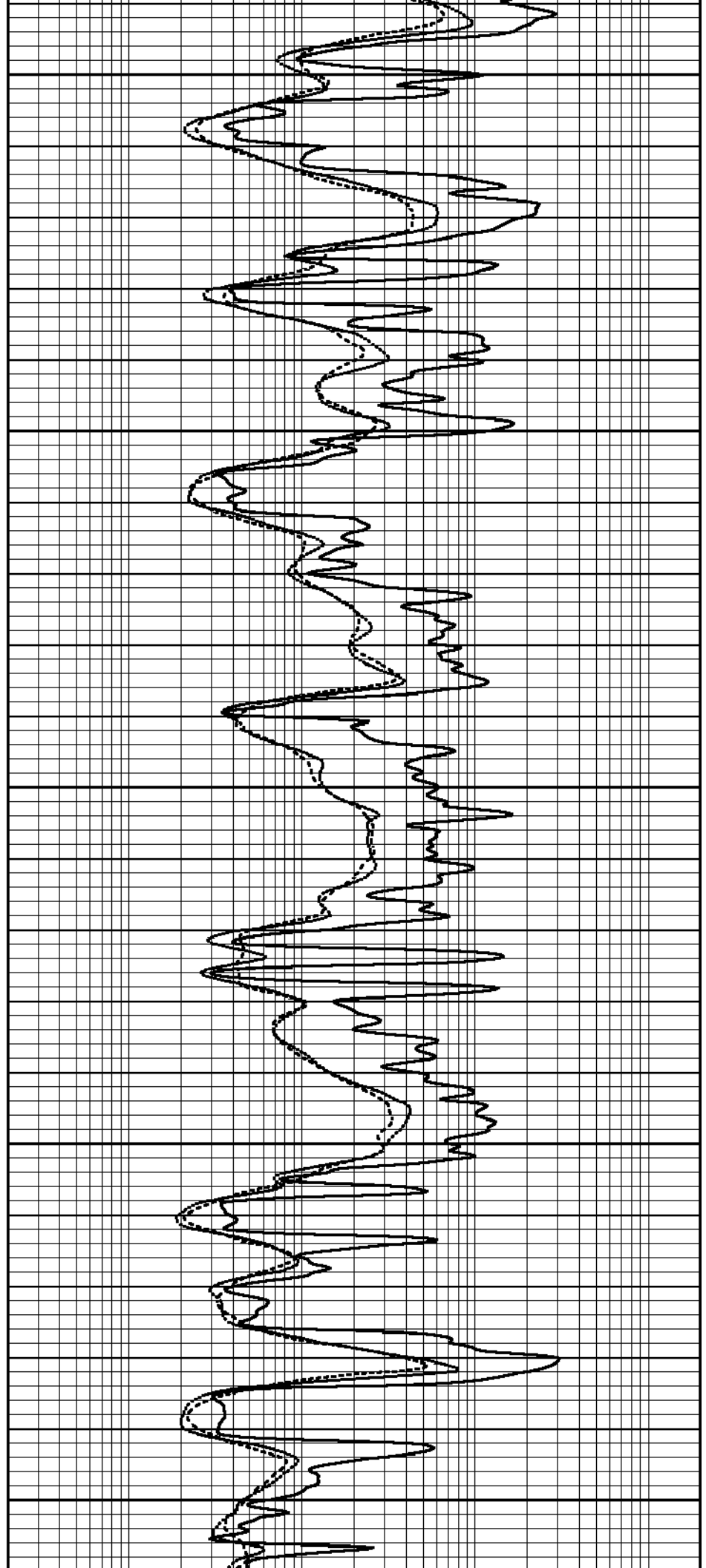
3850

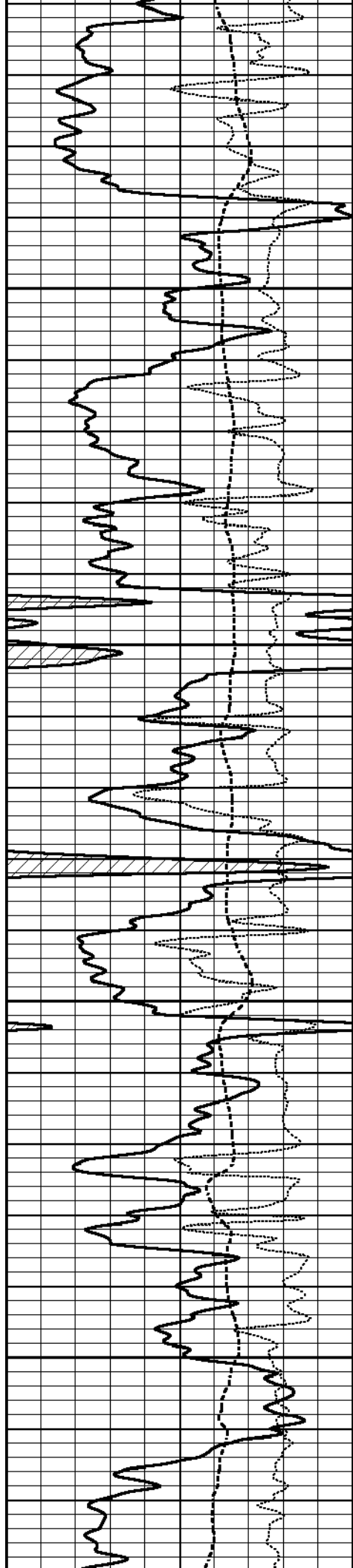
3900

3950

4000

4050



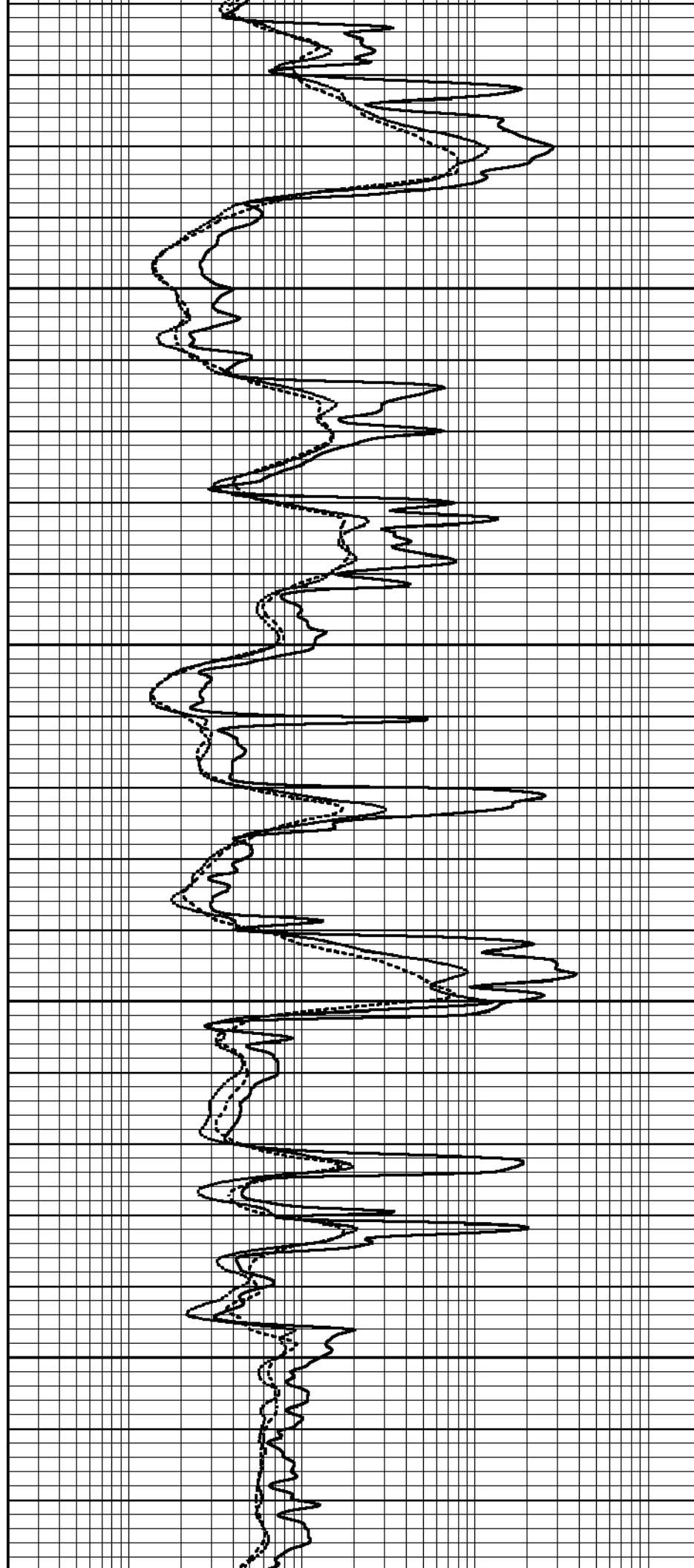


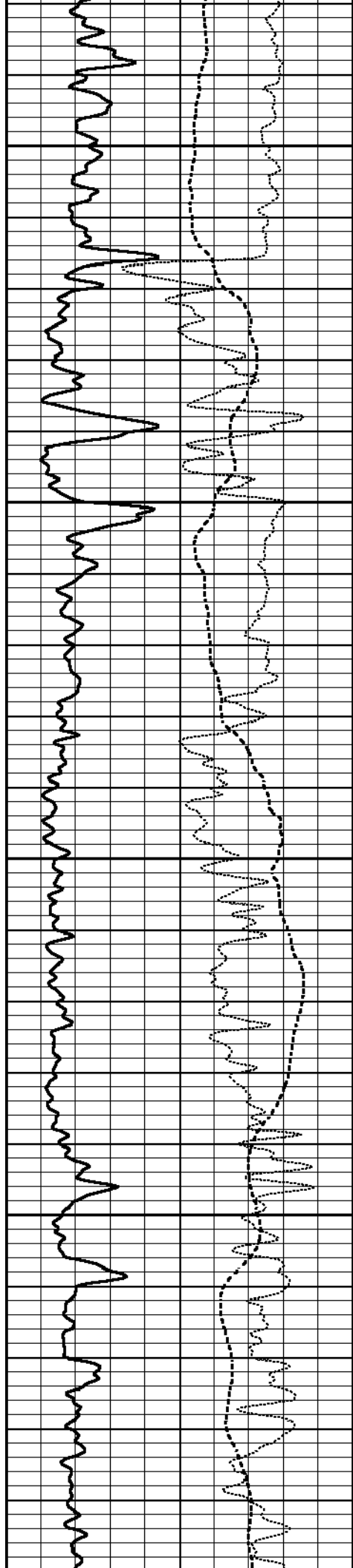
4100

4150

4200

4250





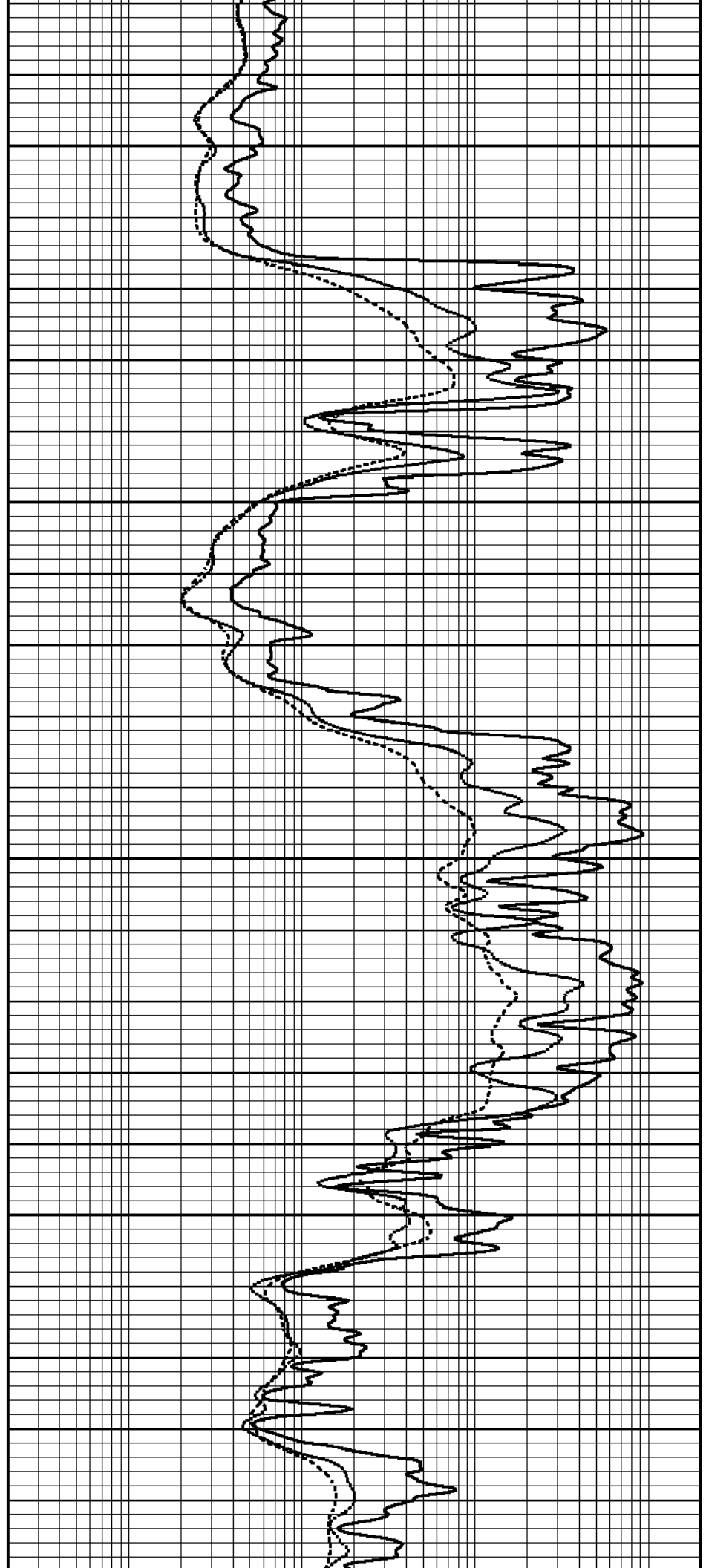
4300

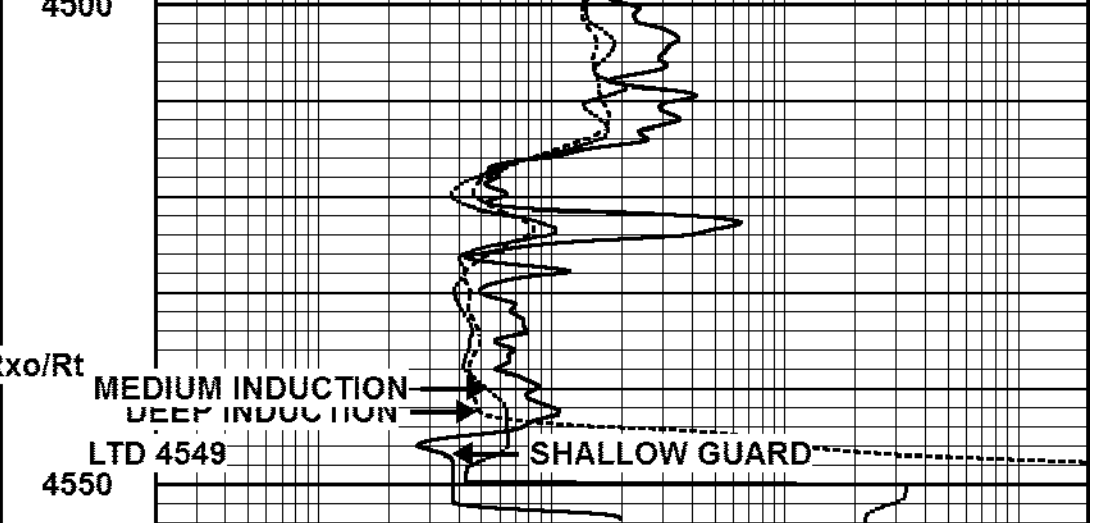
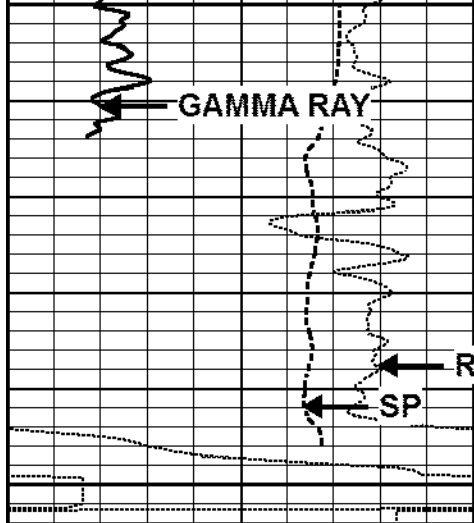
4350

4400

4450

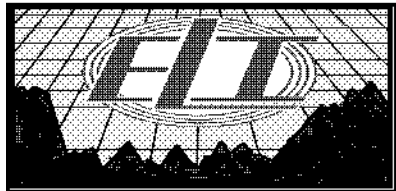
4500





0	GAMMA RAY (GAPI)	150
-250	Rxo/Rt	50
-100	SP (mV)	100

0.2	SHALLOW GUARD (Ohm-m)	2000
0.2	MEDIUM INDUCTION (Ohm-m)	2000
0.2	DEEP INDUCTION (Ohm-m)	2000

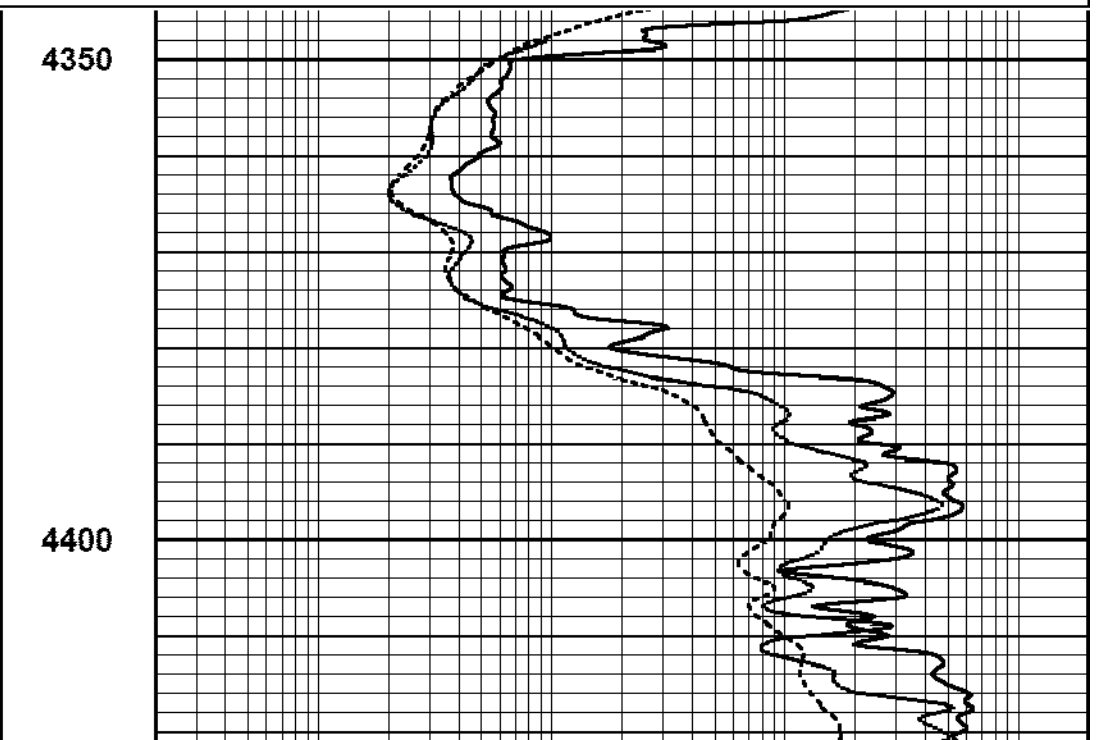
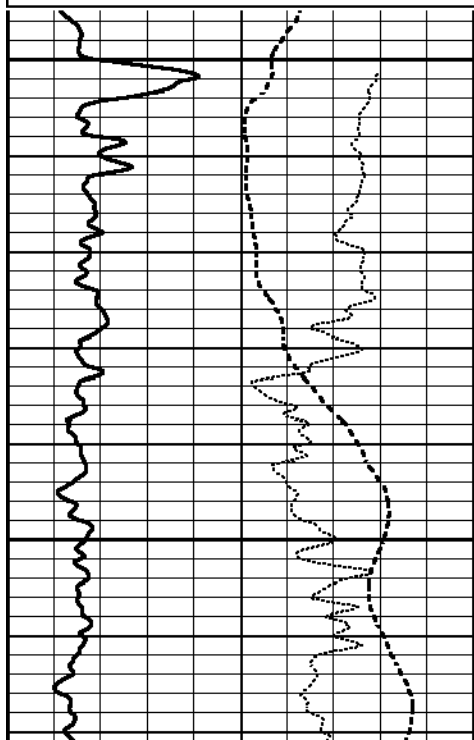


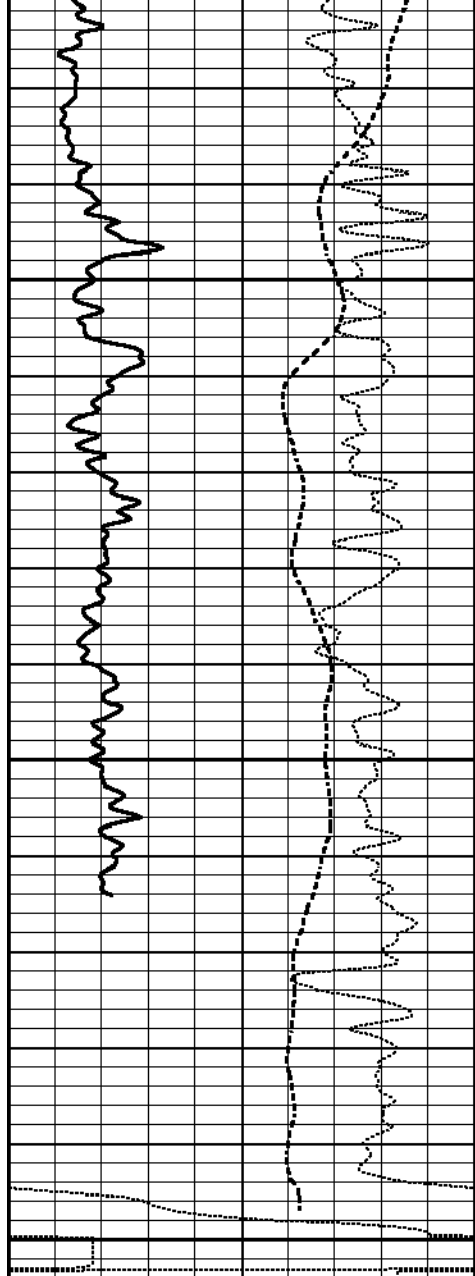
REPEAT SECTION

Database File 2373pe.db
 Dataset Pathname pass2RP
 Presentation Format _dil
 Dataset Creation Sun Mar 18 08:45:10 2018
 Charted by Depth in Feet scaled 1:240

0	GAMMA RAY (GAPI)	150
-250	Rxo/Rt	50
-100	SP (mV)	100

0.2	SHALLOW GUARD (Ohm-m)	2000
0.2	MEDIUM INDUCTION (Ohm-m)	2000
0.2	DEEP INDUCTION (Ohm-m)	2000



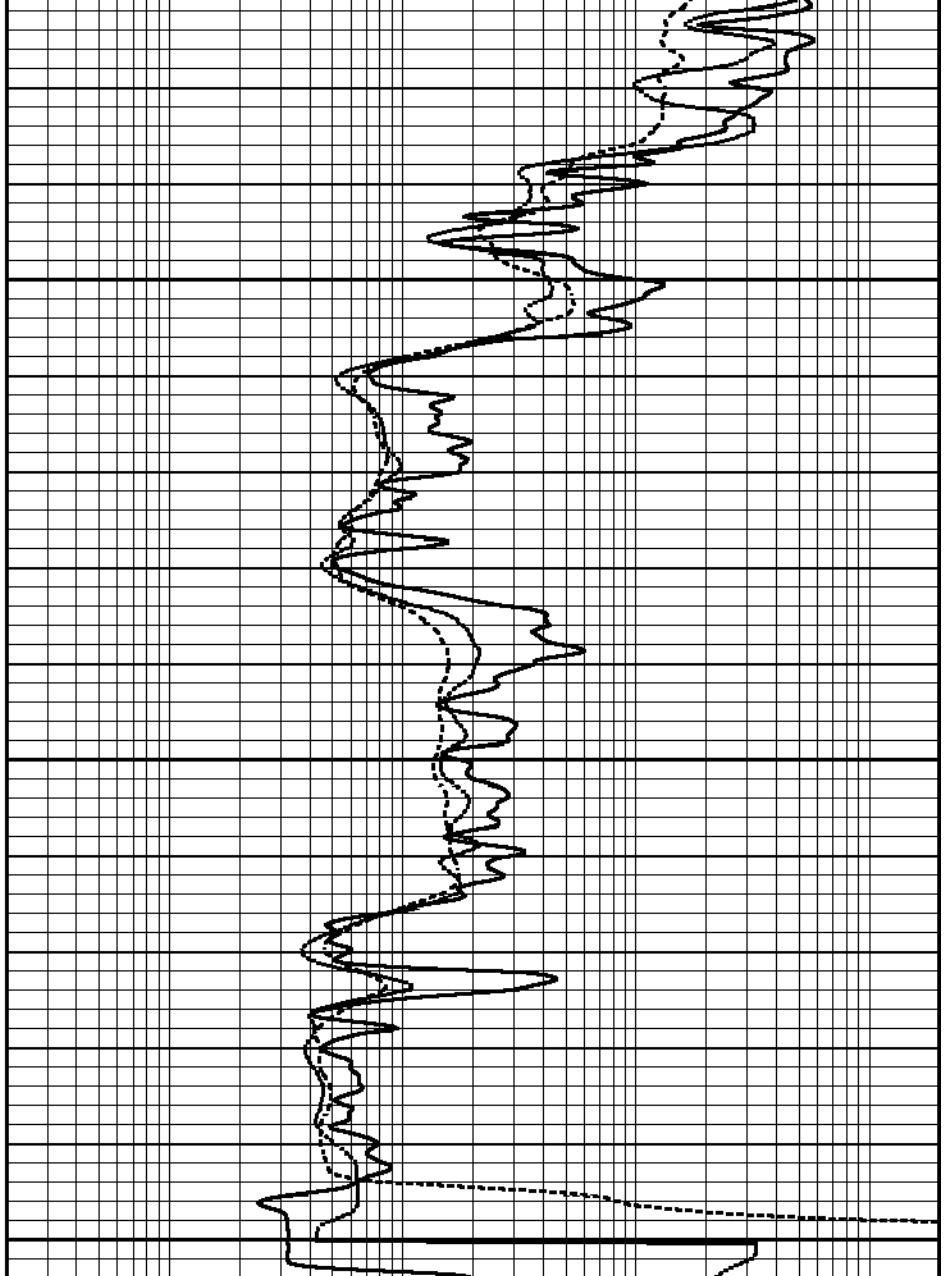


4450

4500

4550

0	GAMMA RAY (GAPI)	150
-250	Rxo/Rt	50
-100	SP (mV)	100



0.2	SHALLOW GUARD (Ohm-m)	2000
0.2	MEDIUM INDUCTION (Ohm-m)	2000
0.2	DEEP INDUCTION (Ohm-m)	2000