

MICRO LOG



Company DOWNING - NELSON OIL COMPANY, INC  
 Well KRAMER - SCOTT "B" #1-16  
 Field WILDCAT  
 County RAWLINS  
 State KANSAS

Company DOWNING - NELSON OIL COMPANY, INC.  
 Well KRAMER - SCOTT "B" #1-16  
 Field WILDCAT  
 County RAWLINS State KANSAS

Location: API #: 15-153-21302-0000  
 494' FNL & 1441' FEL  
 SEC 16 TWP 5S RGE 36W  
 Permanent Datum GROUND LEVEL Elevation 3322  
 Log Measured From KELLY BUSHING 11' A.G.L.  
 Drilling Measured From KELLY BUSHING  
 Other Services CDL/CNL DIL/SON  
 Elevation K.B. 3333 D.F. 3331 G.L. 3322

Date	1/5/23		
Run Number	TWO		
Depth Driller	4900		
Depth Logger	4900		
Bottom Logged Interval	4884		
Top Log Interval	3600		
Casing Driller	8 5/8"@481'		
Casing Logger	476		
Bit Size	7 7/8"		
Type Fluid in Hole	CHEMICAL MUD	CHLORIDES: 1,000 PPM	
Density / Viscosity	9.5/70		
pH / Fluid Loss	10.5/8.0		
Source of Sample	FLOWLINE		
Rm @ Meas. Temp	2.40@62F		
Rmf @ Meas. Temp	1.80@62F		
Rmc @ Meas. Temp	2.88@62F		
Source of Rmf / Rmc	MEASUREMENT		
Rm @ BHT	1.20@124F		
Time Circulation Stopped	4:5 HOURS		
Time Logger on Bottom	8:30 P.M.		
Maximum Recorded Temperature	124F		
Equipment Number	8916		
Location	HAYS, KANSAS		
Recorded By	JEFF LUEBBERS		
Witnessed By	MARC DOWNING		

<<< Fold Here >>>

All interpretations are opinions based on inferences from electrical or other measurements and we cannot and do not guarantee the accuracy or correctness of any interpretation, and we shall not, except in the case of gross or willful negligence on our part, be liable or responsible for any loss, costs, damages, or expenses incurred or sustained by anyone resulting from any interpretation made by any of our officers, agents or employees. These interpretations are also subject to our general terms and conditions set out in our current Price Schedule.

Comments

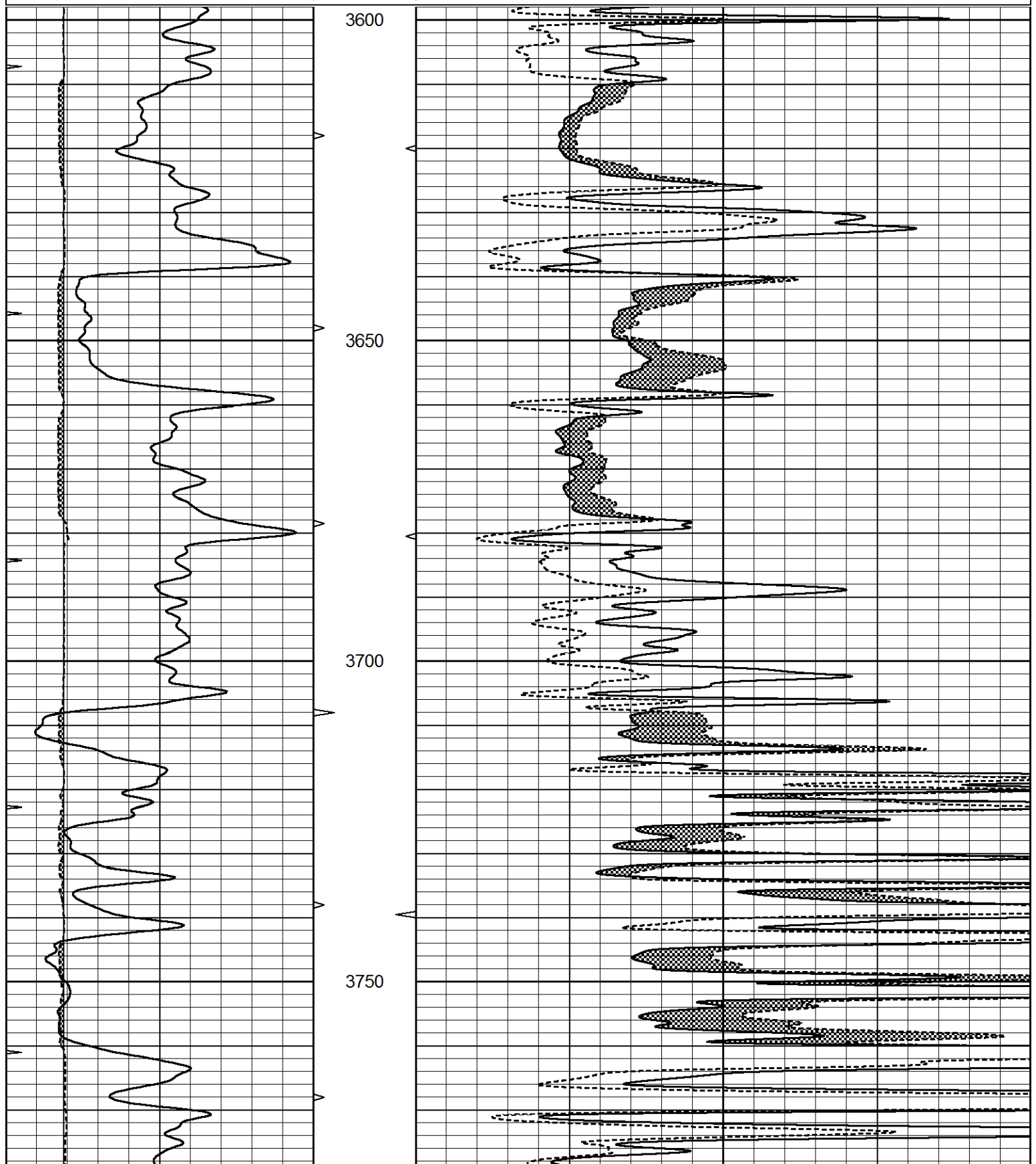
THANK YOU FOR USING ELI WIRELINE, HAYS, KS. (785) 628-6395  
 DIRECTIONS:  
 BREWSTER, KS., N. TO "BEAVER CREEK RD.", 1E. TO CURVE, N. TO FORK, W. TO OLD FARMSTAED, N. INTO

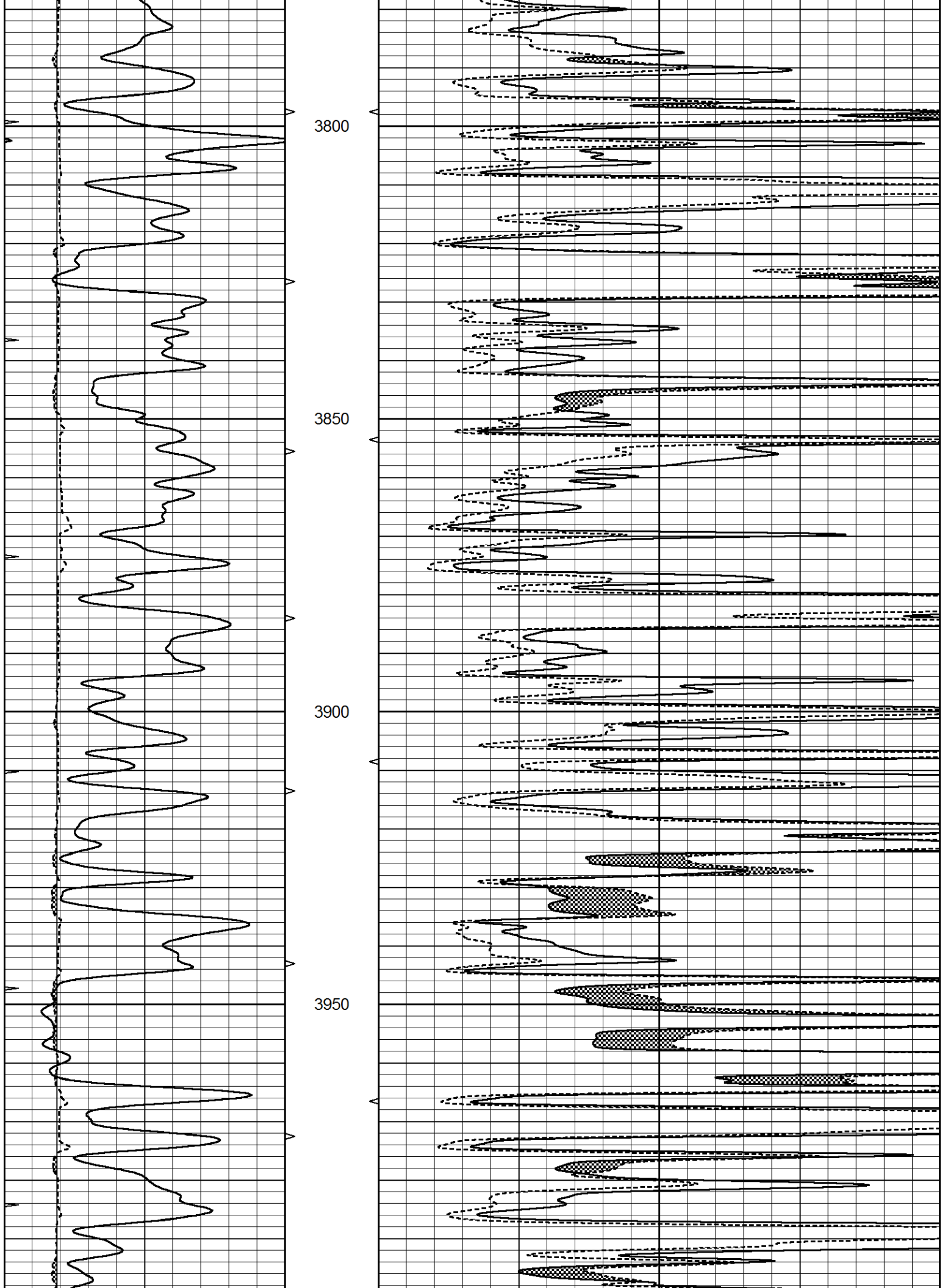


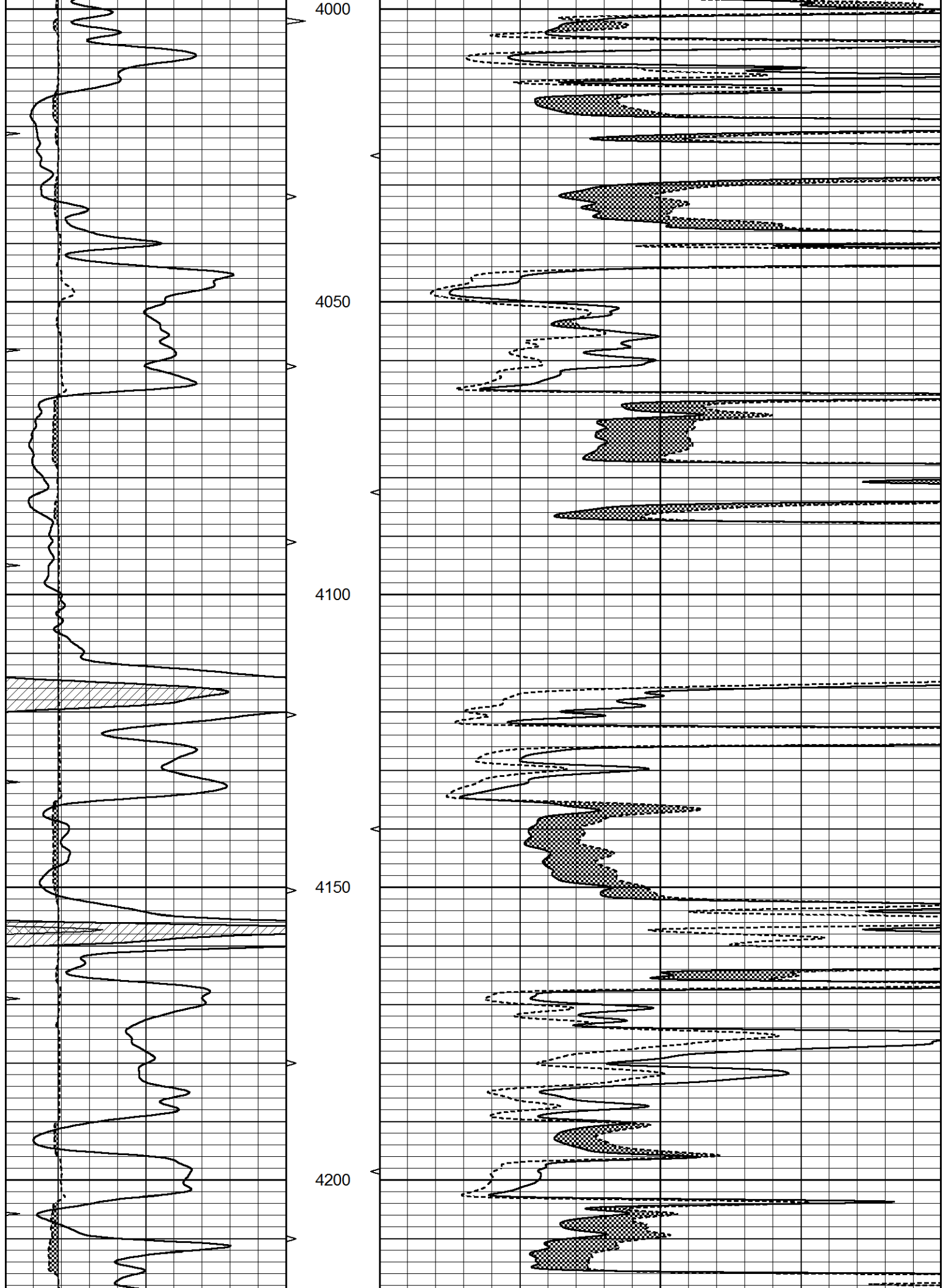
MAIN SECTION

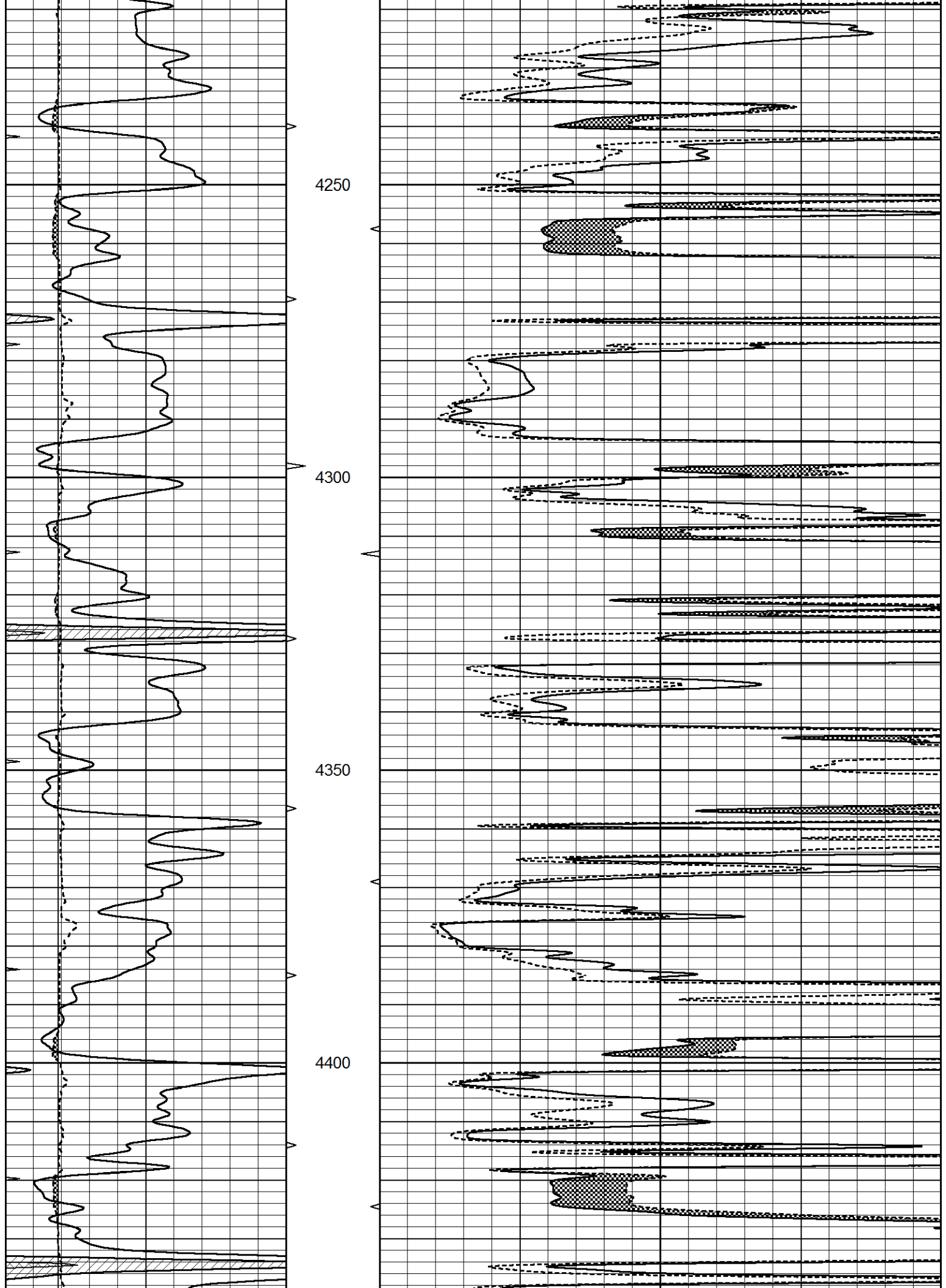
Database File 7431ddn.db  
 Dataset Pathname pass12.1M  
 Presentation Format \_micro  
 Dataset Creation Thu Jan 05 21:05:52 2023  
 Charted by Depth in Feet scaled 1:240

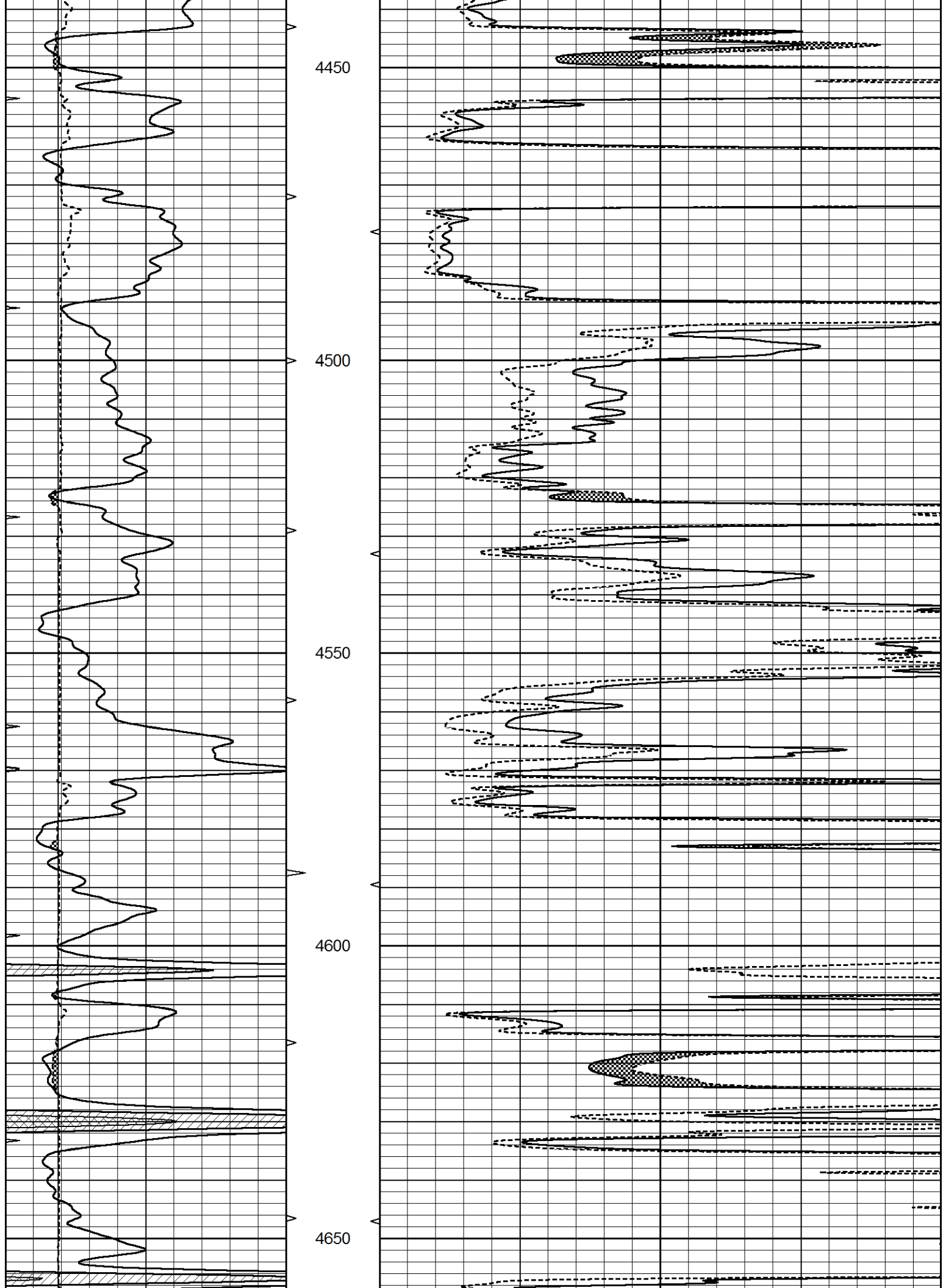
0	GAMMA RAY (GAPI)	150	ABHV	0	MEL1.5 (Ohm-m)	40
6	CALIPER (in)	16	10 (ft3)	0	MEL2.0 (Ohm-m)	40
0	MINMK	20	TBHV			
			0 (ft3)	10		

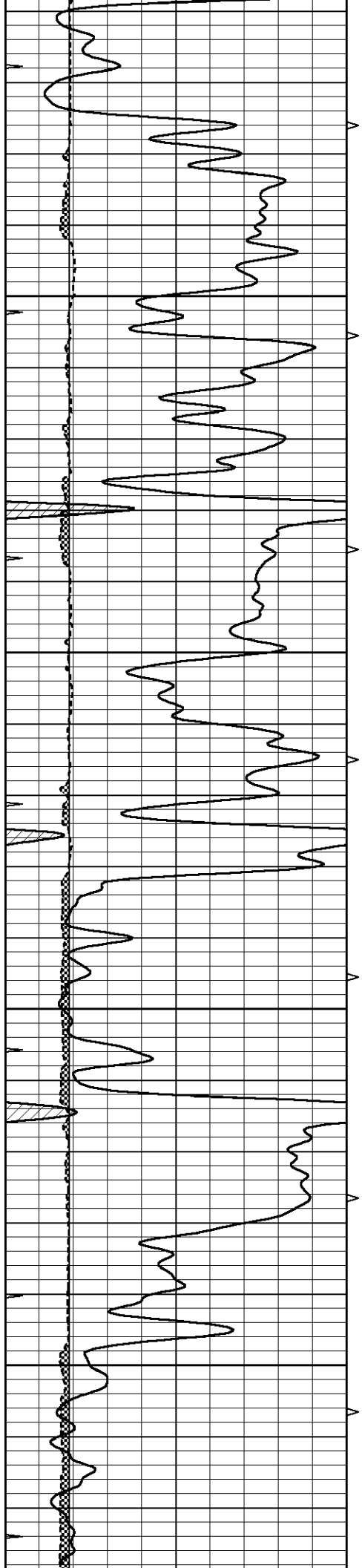










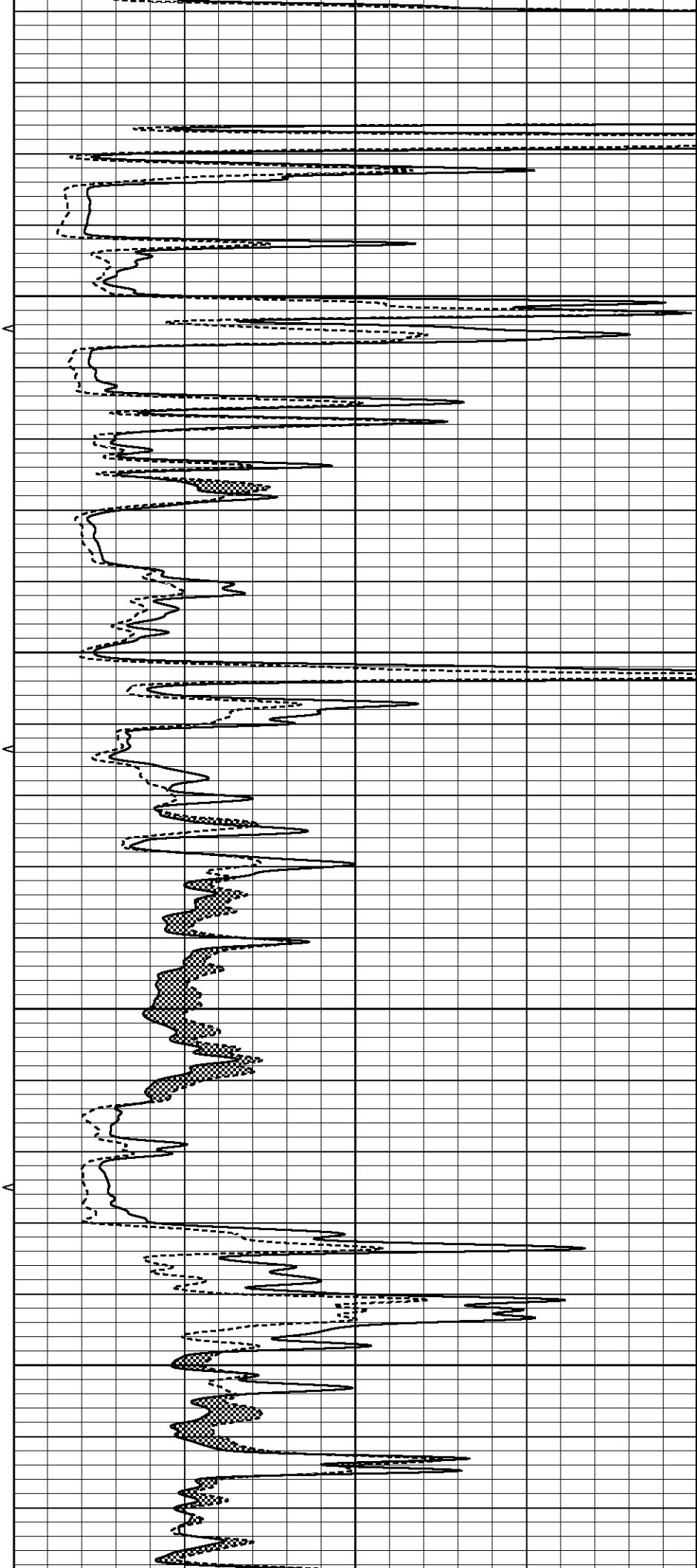


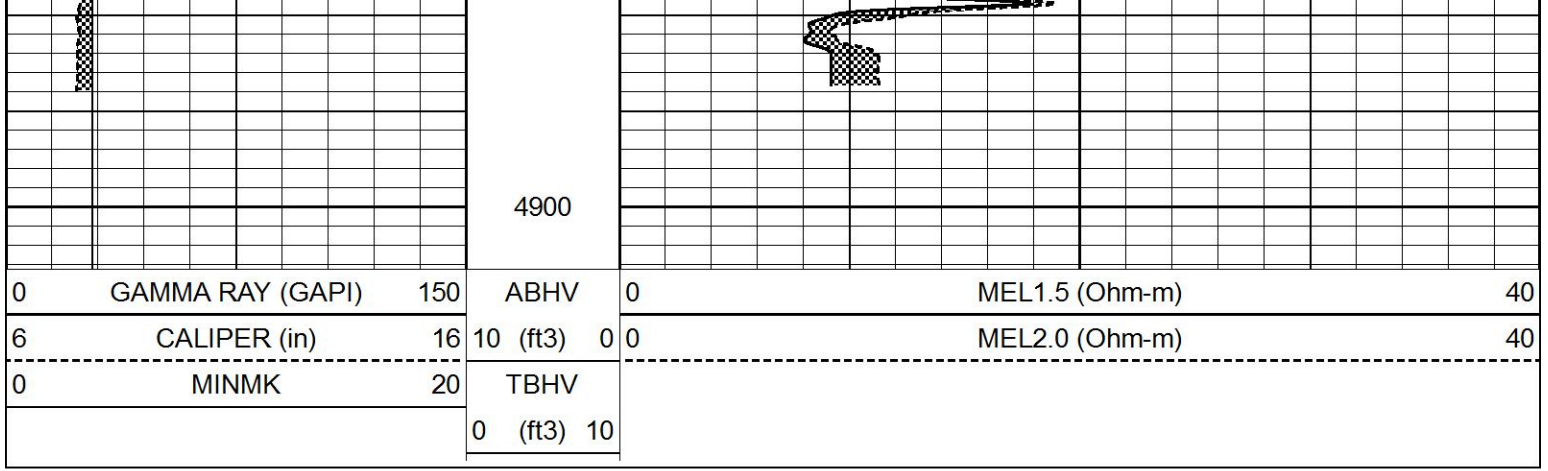
4700

4750

4800

4850





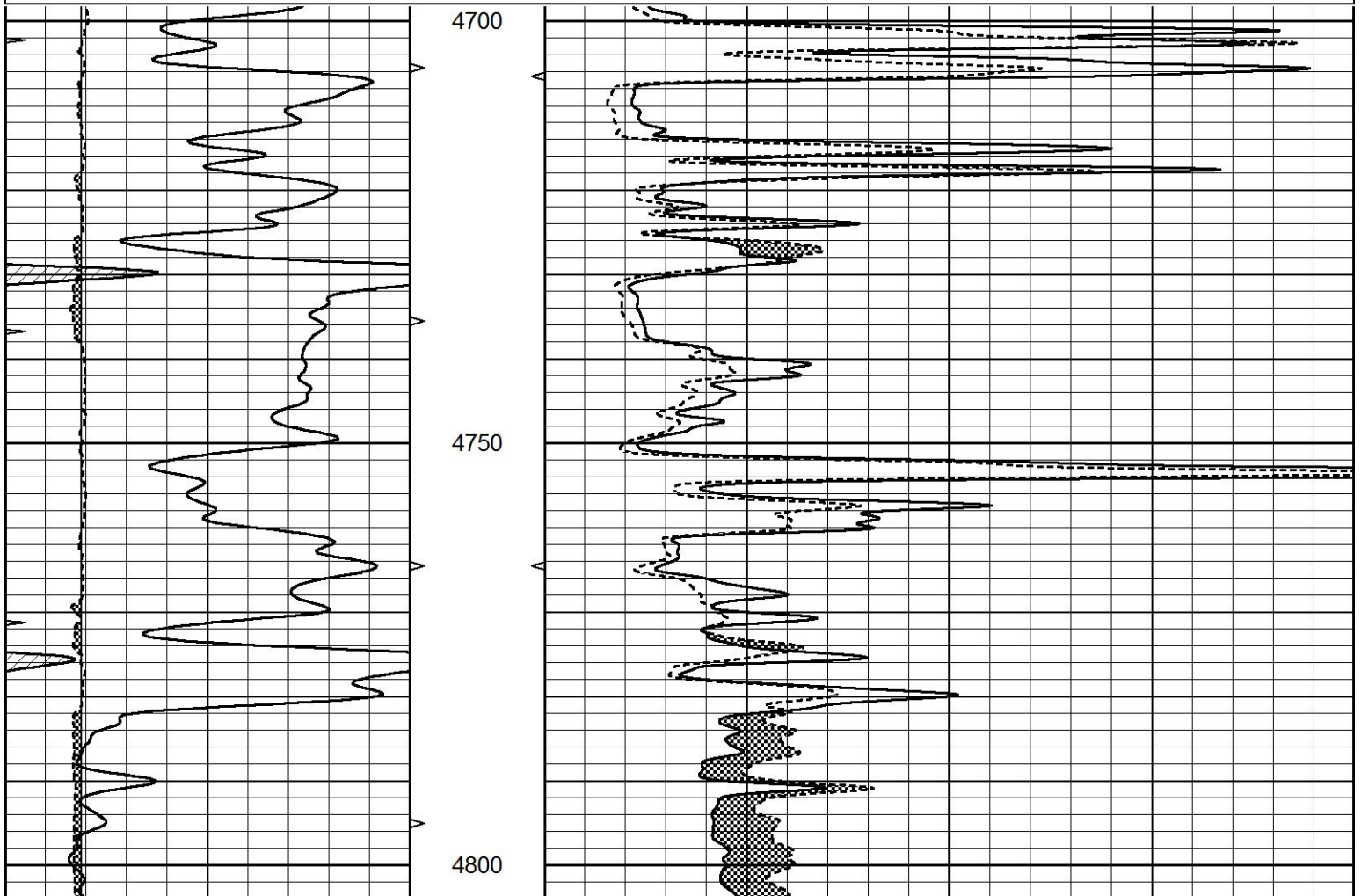
0	GAMMA RAY (GAPI)	150	ABHV	0	MEL1.5 (Ohm-m)	40
6	CALIPER (in)	16	10 (ft3)	0	MEL2.0 (Ohm-m)	40
0	MINMK	20	TBHV			
			0 (ft3)	10		

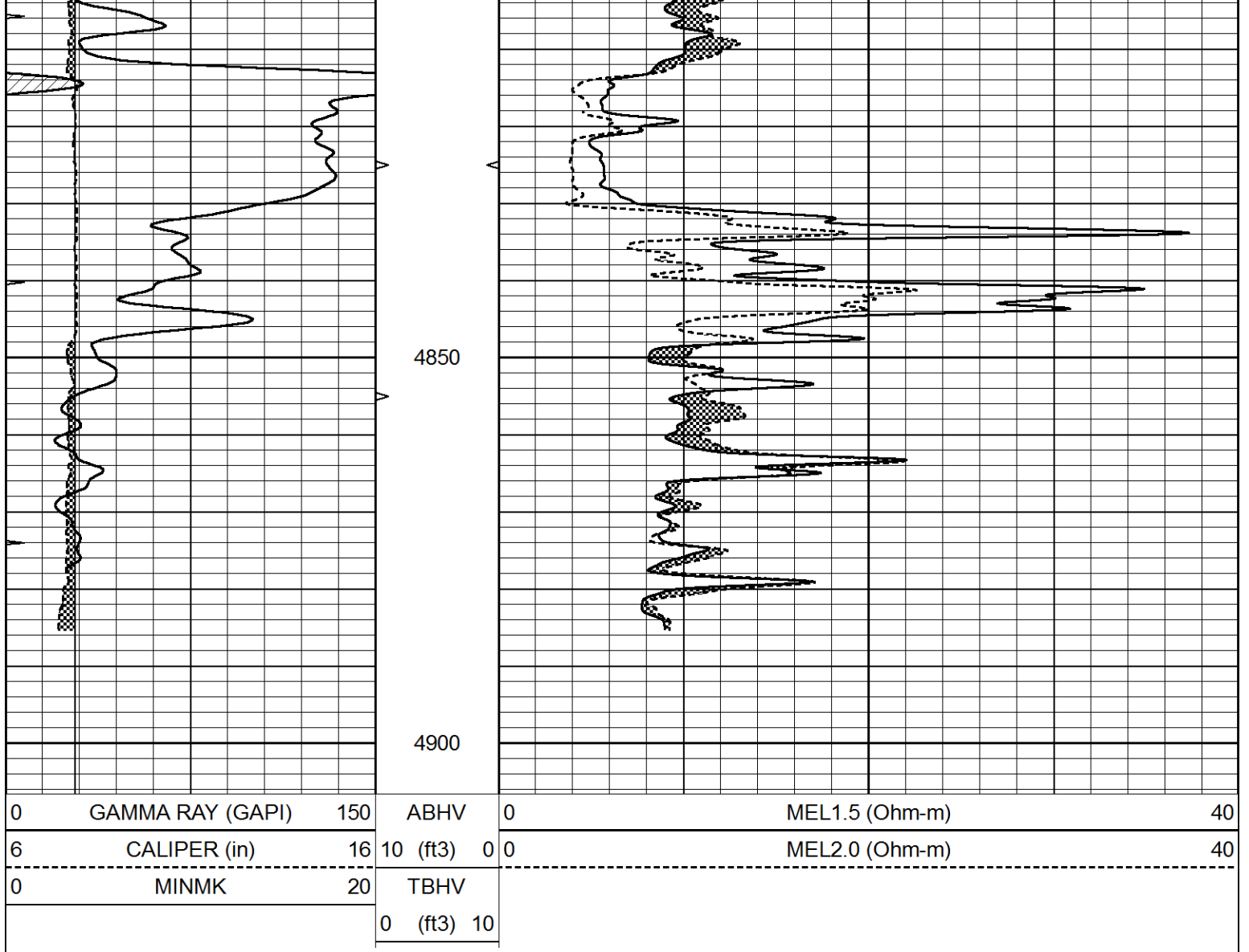


# REPEAT SECTION

Database File 7431ddn.db  
 Dataset Pathname pass11.2R  
 Presentation Format \_micro  
 Dataset Creation Thu Jan 05 21:02:49 2023  
 Charted by Depth in Feet scaled 1:240

0	GAMMA RAY (GAPI)	150	ABHV	0	MEL1.5 (Ohm-m)	40
6	CALIPER (in)	16	10 (ft3)	0	MEL2.0 (Ohm-m)	40
0	MINMK	20	TBHV			
			0 (ft3)	10		





### Calibration Report

Database File 7431ddn.db  
 Dataset Pathname pass12.1M  
 Dataset Creation Thu Jan 05 21:05:52 2023

### MICRO Calibration Report

Serial Number: MICRO5  
 Tool Model: PROBE  
 Performed: Thu Jan 05 19:37:52 2023

Caliper Calibration: Gain=1.772 Offset=-0.949

	Low Cal	High Cal
References	8.000	15.000
Readings	5.050	9.000

1.5" Calibration: Gain=42.000 Offset=0.000

	Low Cal	High Cal
References	0.000	20.000
Readings	0.015	1.007

2" Calibration: Gain=56.000 Offset=-1.000

	Low Cal	High Cal
References	0.000	20.000
Readings	0.008	0.908

# Gamma Ray Calibration Report

Serial Number:	GR5	
Tool Model:	OPEN	
Performed:	Mon Jan 02 04:02:59 2023	
Calibrator Value:	1.0	GAPI
Background Reading:	0.0	cps
Calibrator Reading:	1.0	cps
Sensitivity:	0.6000	GAPI/cps