



**COMPENSATED
DENSITY/NEUTRON
LOG**

Company DOWNING - NELSON OIL COMPANY, INC.
Well KRAMER - SCOTT "B" #1-16
Field WILDCAT
County RAWLINS State KANSAS

Location: API #: 15-153-21302-0000
494' FNL & 1441' FEL
SEC 16 TWP 5S RGE 36W
Permanent Datum GROUND LEVEL Elevation 3322
Log Measured From KELLY BUSHING 11' A.G.L.
Drilling Measured From KELLY BUSHING
Other Services DILMEL SONIC
Elevation K.B. 3333 D.F. 3331 G.L. 3322

Date	1/5/23
Run Number	ONE
Depth Driller	4900
Depth Logger	4900
Bottom Logged Interval	4876
Top Log Interval	3600
Casing Driller	8 5/8"@481'
Casing Logger	476
Bit Size	7 7/8"
Type Fluid in Hole	CHEMICAL MUD
Density / Viscosity	9.5/70
pH / Fluid Loss	10.5/8.0
Source of Sample	FLOWLINE
Rm @ Meas. Temp	2.40@62F
Rmf @ Meas. Temp	1.80@62F
Rmc @ Meas. Temp	2.88@62F
Source of Rmf / Rmc	MEASUREMENT
Rm @ BHT	1.20@124F
Time Circulation Stopped	3 HOURS
Time Logger on Bottom	5:30 P.M.
Maximum Recorded Temperature	124F
Equipment Number	8916
Location	HAYS, KANSAS
Recorded By	JEFF LUEBBERS
Witnessed By	MARC DOWNING

<<< Fold Here >>>

All interpretations are opinions based on inferences from electrical or other measurements and we cannot and do not guarantee the accuracy or correctness of any interpretation, and we shall not, except in the case of gross or willful negligence on our part, be liable or responsible for any loss, costs, damages, or expenses incurred or sustained by anyone resulting from any interpretation made by any of our officers, agents or employees. These interpretations are also subject to our general terms and conditions set out in our current Price Schedule.

Comments

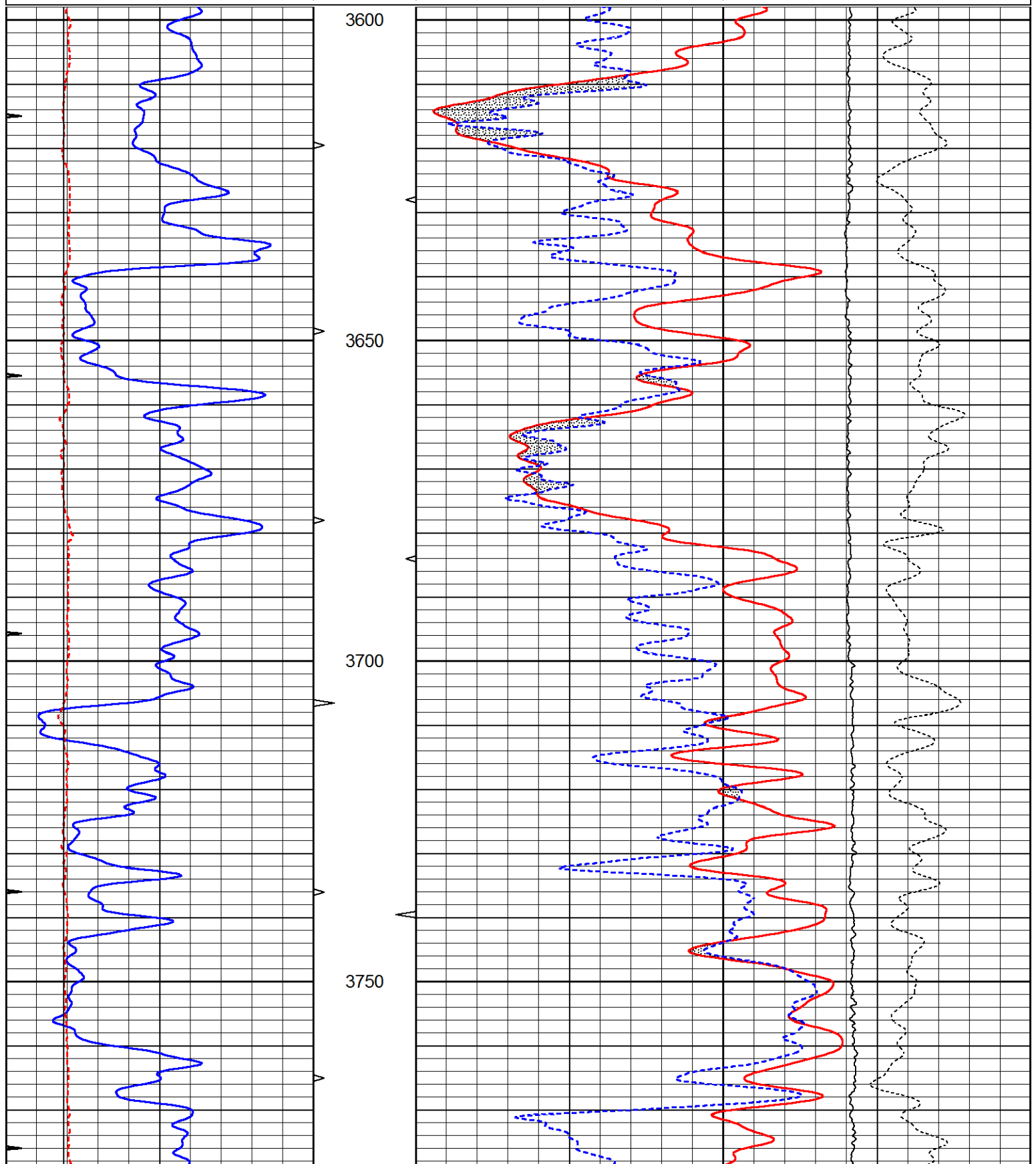
THANK YOU FOR USING ELI WIRELINE, HAYS, KS. (785) 628-6395
DIRECTIONS:
BREWSTER, KS., N. TO "BEAVER CREEK RD.", 1E. TO CURVE, N. TO FORK, W. TO OLD FARMSTAED, N. INTO

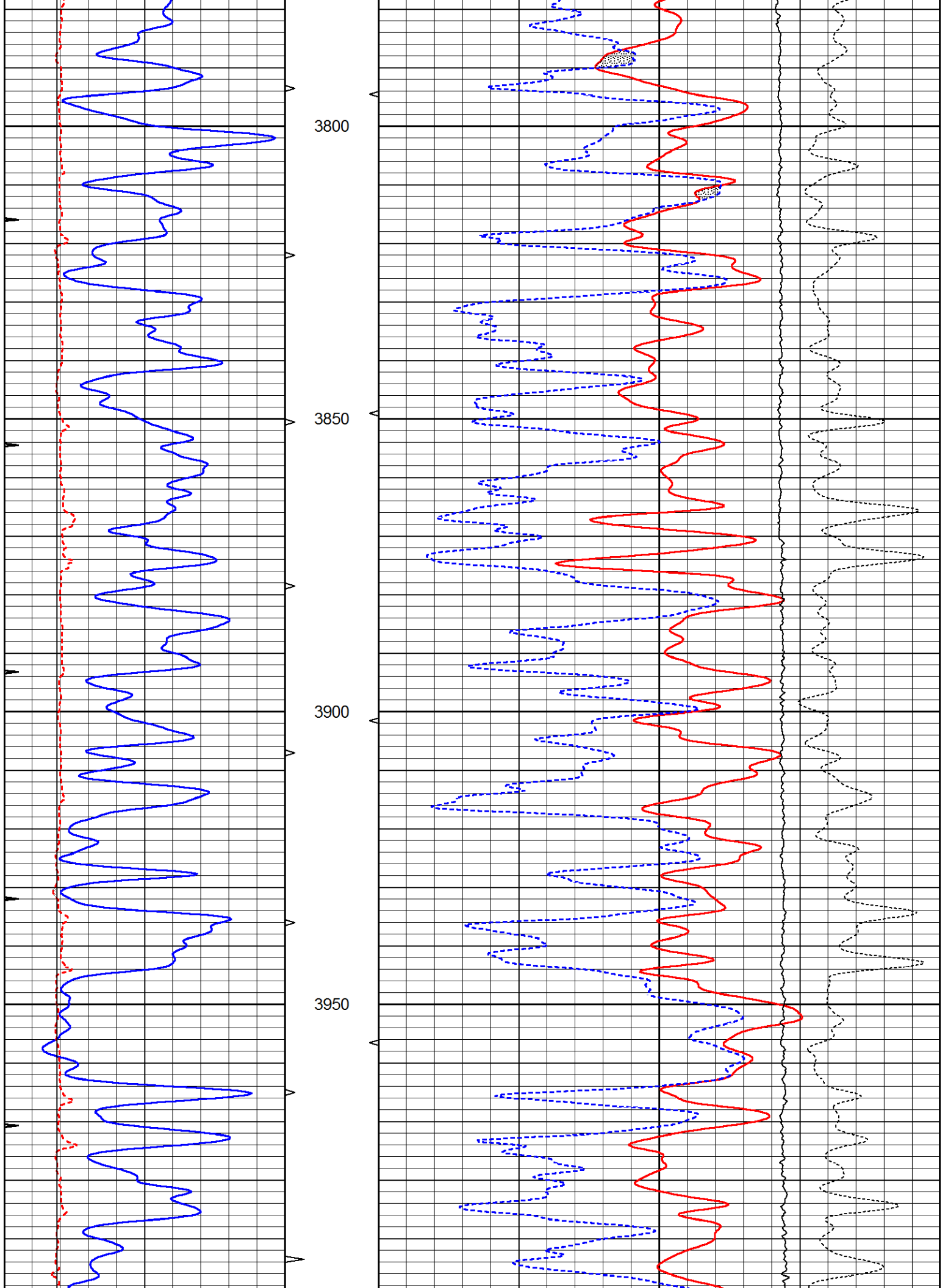


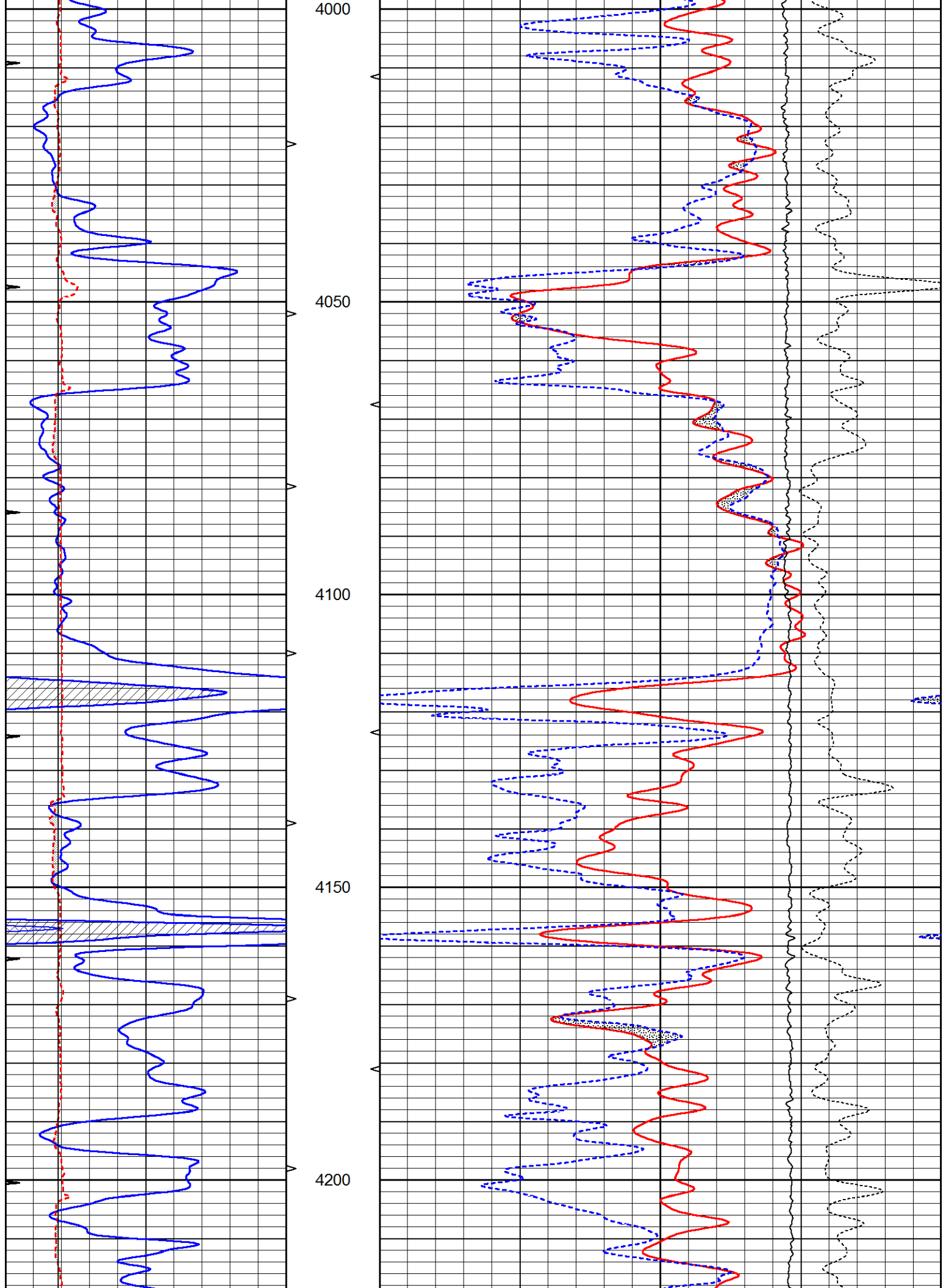
MAIN SECTION

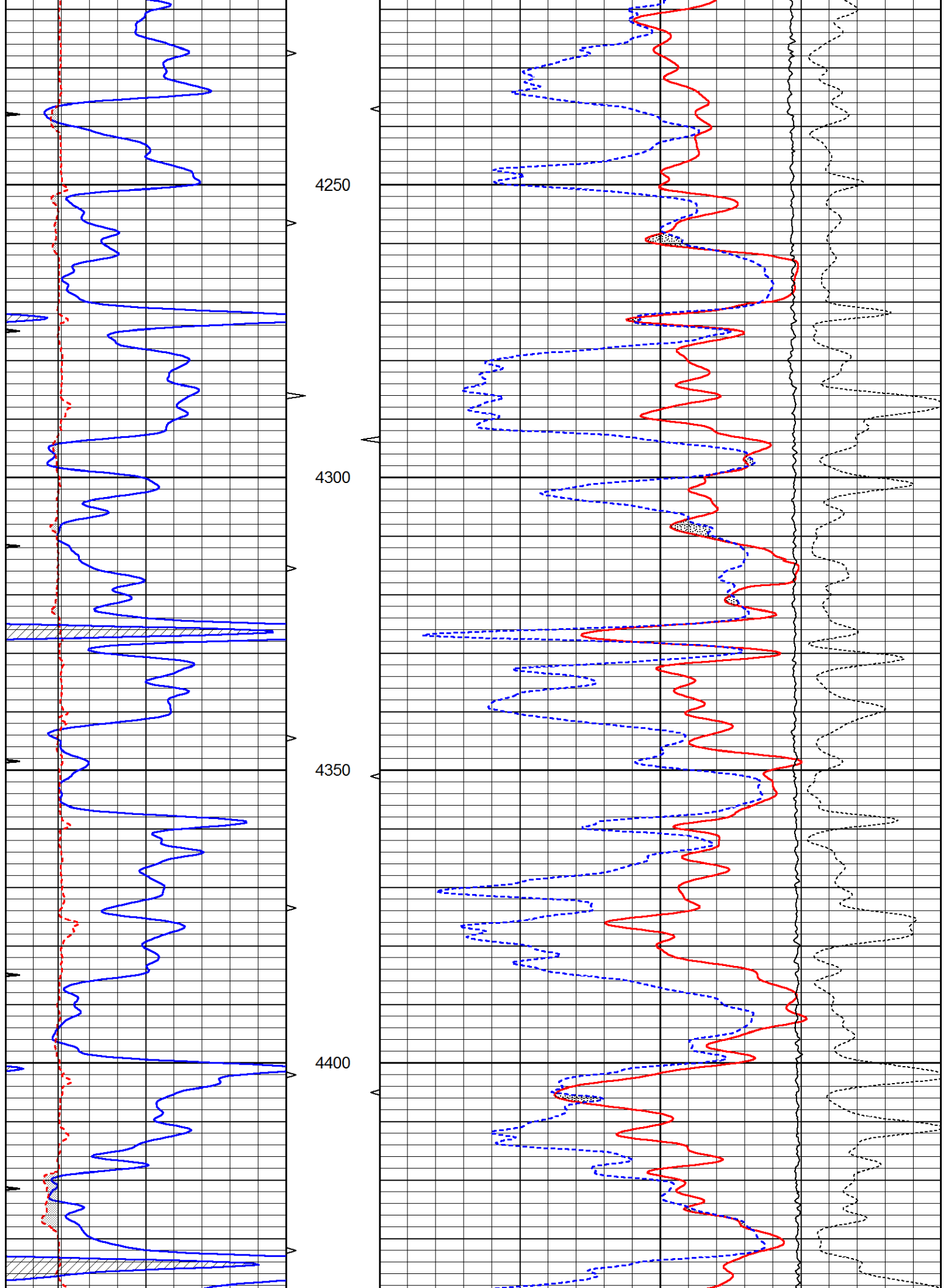
Database File 7431ddn.db
 Dataset Pathname pass3.1M
 Presentation Format den_neu
 Dataset Creation Thu Jan 05 19:21:34 2023
 Charted by Depth in Feet scaled 1:240

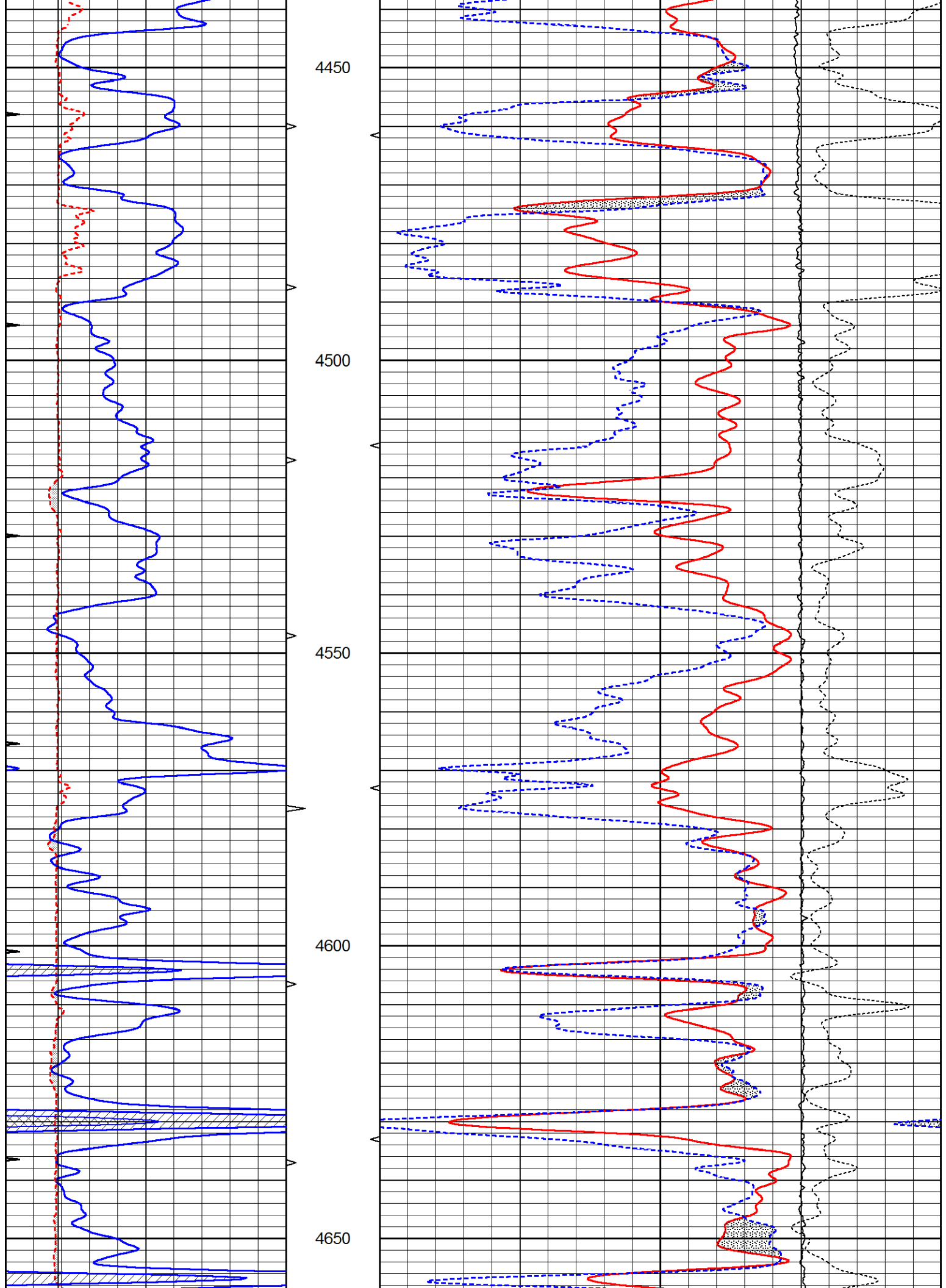
0	GAMMA RAY (GAPI)	150	ABHV	30	COMPENSATED DENSITY (pu)	-10	
6	CALIPER (in)	16	10 (ft3)	0	COMPENSATED NEUTRON (pu)	-10	
0	MINMK	20	TBHV		-0.25 CORRECTION (g/cc)	0.25	
			0 (ft3)	10	0	LTEN (lb)	5000

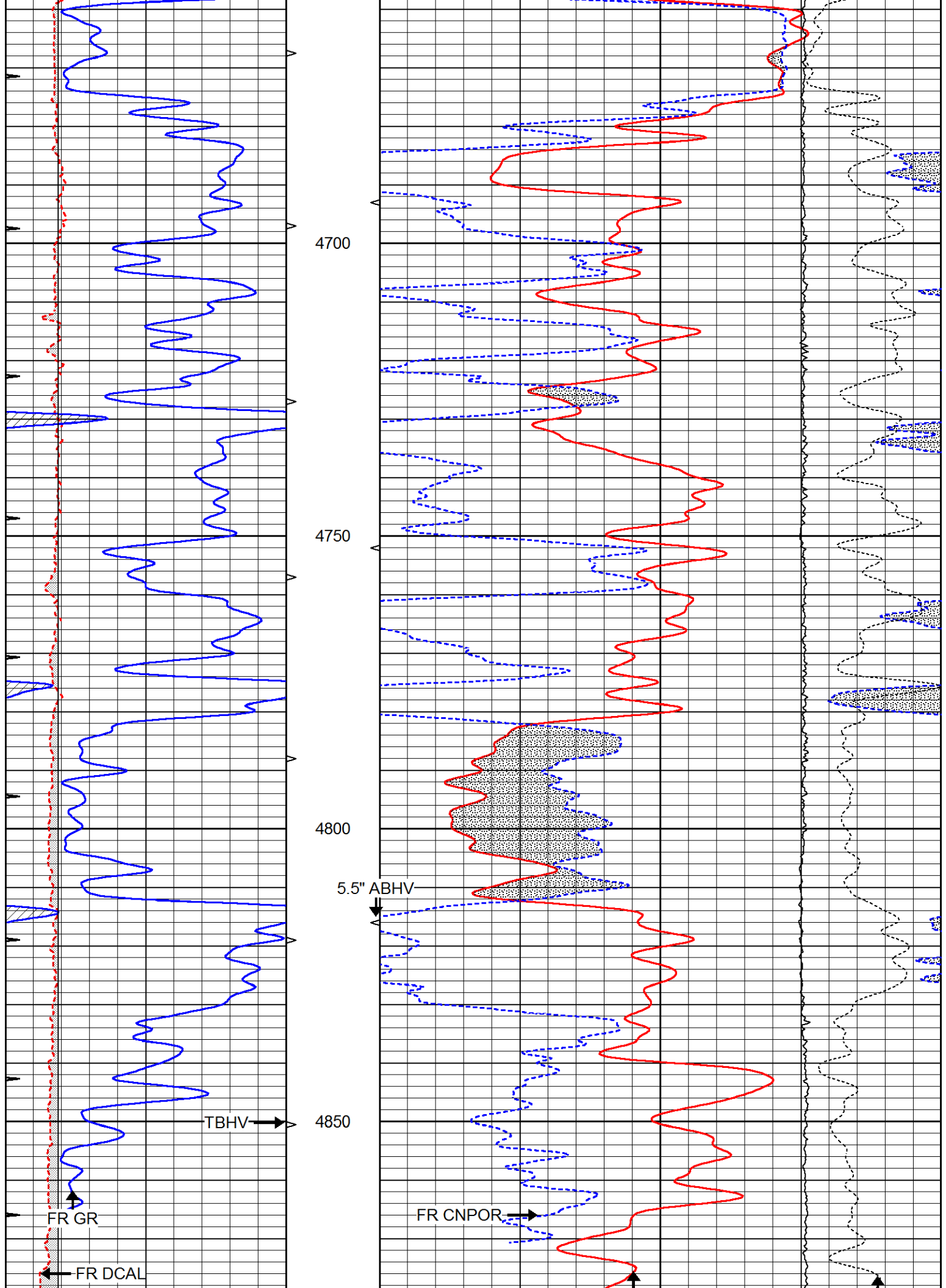


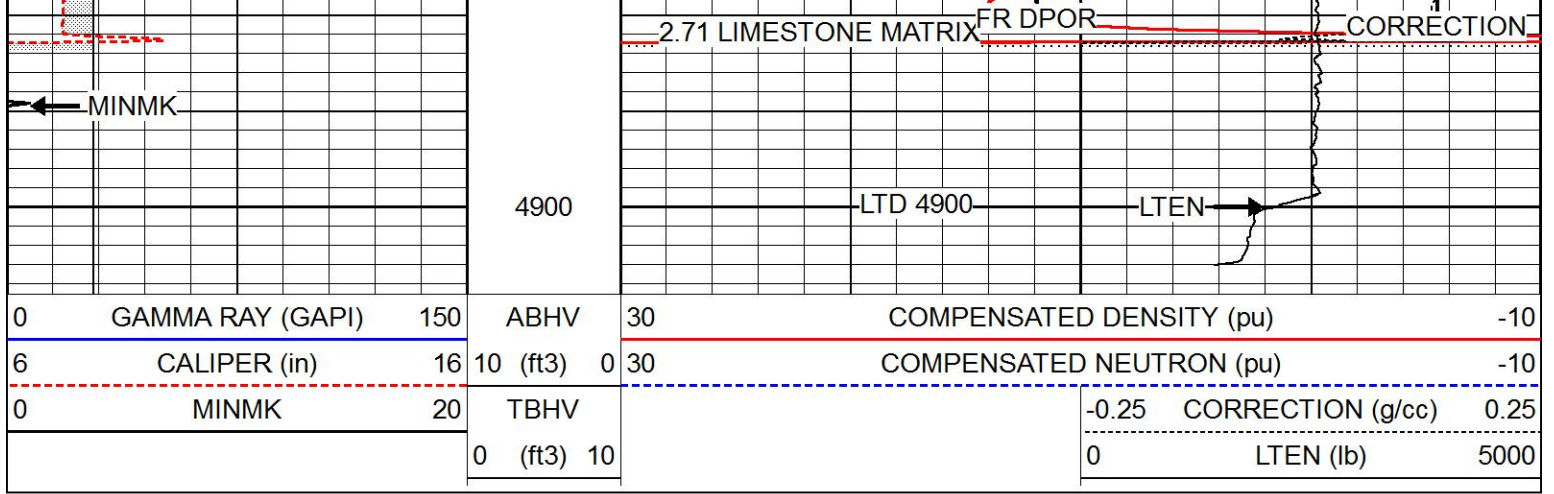








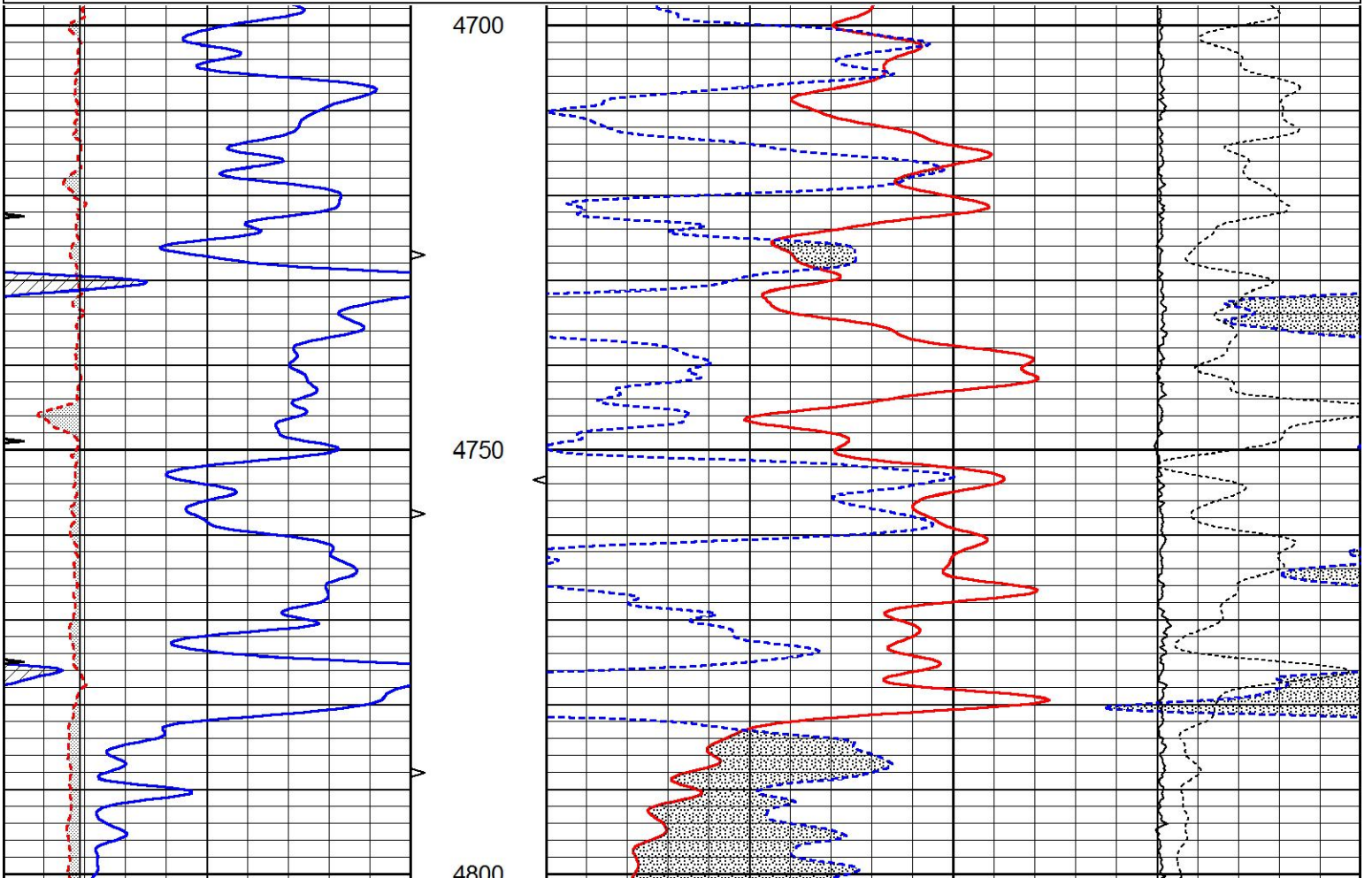




REPEAT SECTION

Database File 7431ddn.db
 Dataset Pathname pass2.1R
 Presentation Format den_neu
 Dataset Creation Thu Jan 05 19:34:01 2023
 Charted by Depth in Feet scaled 1:240

0	GAMMA RAY (GAPI)	150	ABHV	30	COMPENSATED DENSITY (pu)	-10	
6	CALIPER (in)	16	10 (ft3)	0 30	COMPENSATED NEUTRON (pu)	-10	
0	MINMK	20	TBHV		-0.25 CORRECTION (g/cc)	0.25	
			0 (ft3)	10	0	LTEN (lb)	5000



	Zero	Cal		Zero	Cal		m'	b'
Deep	0.000	0.000	mmho/m	2.011	405.777	mmho/m	1.000	0.000
Medium	0.000	0.000	mmho/m	7.590	503.393	mmho/m	1.000	0.000
LL3		7.500	V		1500.000	Ohm-m		
		0.000	V		20.000	Ohm-m		
		-7.200	V		3800.000	mmho-m		

After Survey Verification								
	Readings			Targets			Results	
	Zero	Cal		Zero	Cal		m'	b'
Deep	0.000	0.000	mmho/m	0.000	0.000	mmho/m	0.000	0.000
Medium	0.000	0.000	mmho/m	0.000	0.000	mmho/m	0.000	0.000
LL3		1.000	Ohm-m		1.000	Ohm-m		
		0.000	Ohm-m		0.000	Ohm-m		
		1.000	mmho-m		1.000	mmho-m		

Litho Density Calibration Report
Serial: 004 Model: PRB

Master Calibration		Performed Fri Nov 04 15:19:59 2022				
	Background	Magnesium	Aluminum	Aluminum+Fe		
Window 1	1153.2	7232.1	2536.8	2279.5	cps	
Window 2	1055.6	6225.5	2222.3	2030.5	cps	
Window 3	902.5	3849.3	1546.4	1462.0	cps	
Window 4	254.4	258.2	253.1	253.9	cps	
Long Space	0.0	5169.9	1166.7	974.9	cps	
Short Space	4.7	1383.0	950.5	792.1	cps	
Rho		1.7100	2.5900	0.0000	g/cc	
Pe		2.0000	2.7500	5.7900		
Rib Angle	: 45.9	Rib Slope	: 1.031	Density/Spine Ratio	: 0.573	
Spine Angle	: 75.9	Spine Slope	: 3.970	Spine Intercept	: -20.2	

Before Survey Verification		Performed Wed Dec 31 18:00:00 1969				
Window 1	0.0	0.0	0.0	0.0	cps	
Window 2	0.0	0.0	0.0	0.0	cps	
Window 3	0.0	0.0	0.0	0.0	cps	
Window 4	0.0	0.0	0.0	0.0	cps	
Long Space	0.0	0.0	0.0	0.0	cps	
Short Space	0.0	0.0	0.0	0.0	cps	
Measured Rho		0.0000	0.0000	0.0000	g/cc	
Measured Correction		0.0000	0.0000	0.0000	g/cc	
Measured Pe			0.0000	0.0000		

After Survey Verification		Performed Wed Dec 31 18:00:00 1969				
Window 1	0.0	0.0	0.0	0.0	cps	
Window 2	0.0	0.0	0.0	0.0	cps	
Window 3	0.0	0.0	0.0	0.0	cps	
Window 4	0.0	0.0	0.0	0.0	cps	
Long Space	0.0	0.0	0.0	0.0	cps	
Short Space	0.0	0.0	0.0	0.0	cps	
Measured Rho		0.0000	0.0000	0.0000	g/cc	
Measured Correction		0.0000	0.0000	0.0000	g/cc	
Measured Pe			0.0000	0.0000		

Compensated Neutron Calibration Report

Serial Number: 6I
 Tool Model: G

CALIBRATION

Detector	Readings	Target	Normalization
Short Space	1.00 cps	1.00 cps	1.0000
Long Space	1.00 cps	1.00 cps	1.0000

PRE-SURVEY VERIFICATION

	Detector	Readings	Measured	Target
1)	Short Space	cps		
	Long Space	cps	pu	pu
2)	Short Space	cps		
	Long Space	cps	pu	
3)	Short Space	cps		
	Long Space	cps	pu	

POST-SURVEY VERIFICATION

	Detector	Readings	Measured	Target
1)	Short Space	cps		
	Long Space	cps	pu	pu
2)	Short Space	cps		
	Long Space	cps	pu	pu
3)	Short Space	cps		
	Long Space	cps	pu	pu

Gamma Ray Calibration Report

Serial Number: GR6
 Tool Model: OPEN
 Performed: Tue Nov 08 13:43:57 2022

Calibrator Value: 150.0 GAPI

Background Reading: 0.0 cps
 Calibrator Reading: 276.0 cps

Sensitivity: 0.8500 GAPI/cps