

SONIC
LOG



Company DOWNING - NELSON OIL COMPANY, INC.
Well KRAMER - SCOTT "B" #1-16
Field WILDCAT
County RAWLINS State KANSAS

Location: API #: 15-153-21302-0000
494' FNL & 144' FEL
SEC 16 TWP 5S RGE 36W
Permanent Datum GROUND LEVEL Elevation 3322
Log Measured From KELLY BUSHING 11' A.G.L.
Drilling Measured From KELLY BUSHING
Other Services
CDL/CNL
DIL/MEL
Elevation
K.B. 3333
D.F. 3331
G.L. 3322

Date	1/5/23		
Run Number	TWO		
Depth Driller	4900		
Depth Logger	4900		
Bottom Logged Interval	4892		
Top Log Interval	400		
Casing Driller	8 5/8"@481'		
Casing Logger	476		
Bit Size	7 7/8"		
Type Fluid in Hole	CHEMICAL MUD	CHLORIDES: 1,000 PPM	
Density / Viscosity	9.5/70		
pH / Fluid Loss	10.5/8.0		
Source of Sample	FLOWLINE		
Rm @ Meas. Temp	2.40@62F		
Rmf @ Meas. Temp	1.80@62F		
Rmc @ Meas. Temp	2.88@62F		
Source of Rmf / Rmc	MEASUREMENT		
Rm @ BHT	1.20@124F		
Time Circulation Stopped	4:5 HOURS		
Time Logger on Bottom	8:30 P.M.		
Maximum Recorded Temperature	124F		
Equipment Number	8916		
Location	HAYS, KANSAS		
Recorded By	JEFF LUEBBERS		
Witnessed By	MARC DOWNING		

<<< Fold Here >>>

All interpretations are opinions based on inferences from electrical or other measurements and we cannot and do not guarantee the accuracy or correctness of any interpretation, and we shall not, except in the case of gross or willful negligence on our part, be liable or responsible for any loss, costs, damages, or expenses incurred or sustained by anyone resulting from any interpretation made by any of our officers, agents or employees. These interpretations are also subject to our general terms and conditions set out in our current Price Schedule.

Comments

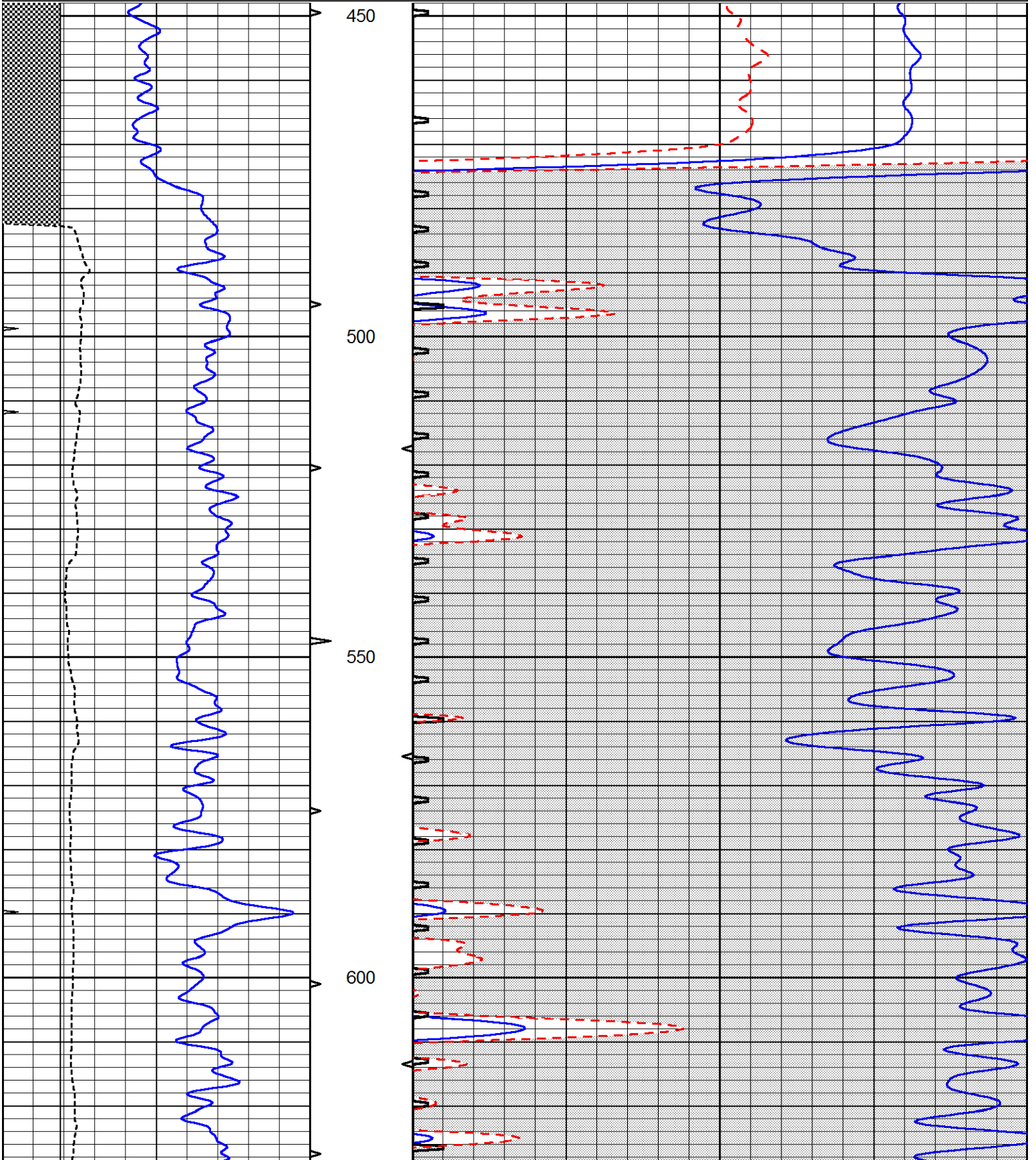
THANK YOU FOR USING ELI WIRELINE, HAYS, KS. (785) 628-6395
DIRECTIONS:
BREWSTER, KS., N. TO "BEAVER CREEK RD.", 1E. TO CURVE, N. TO FORK, W. TO OLD FARMSTAED, N. INTO

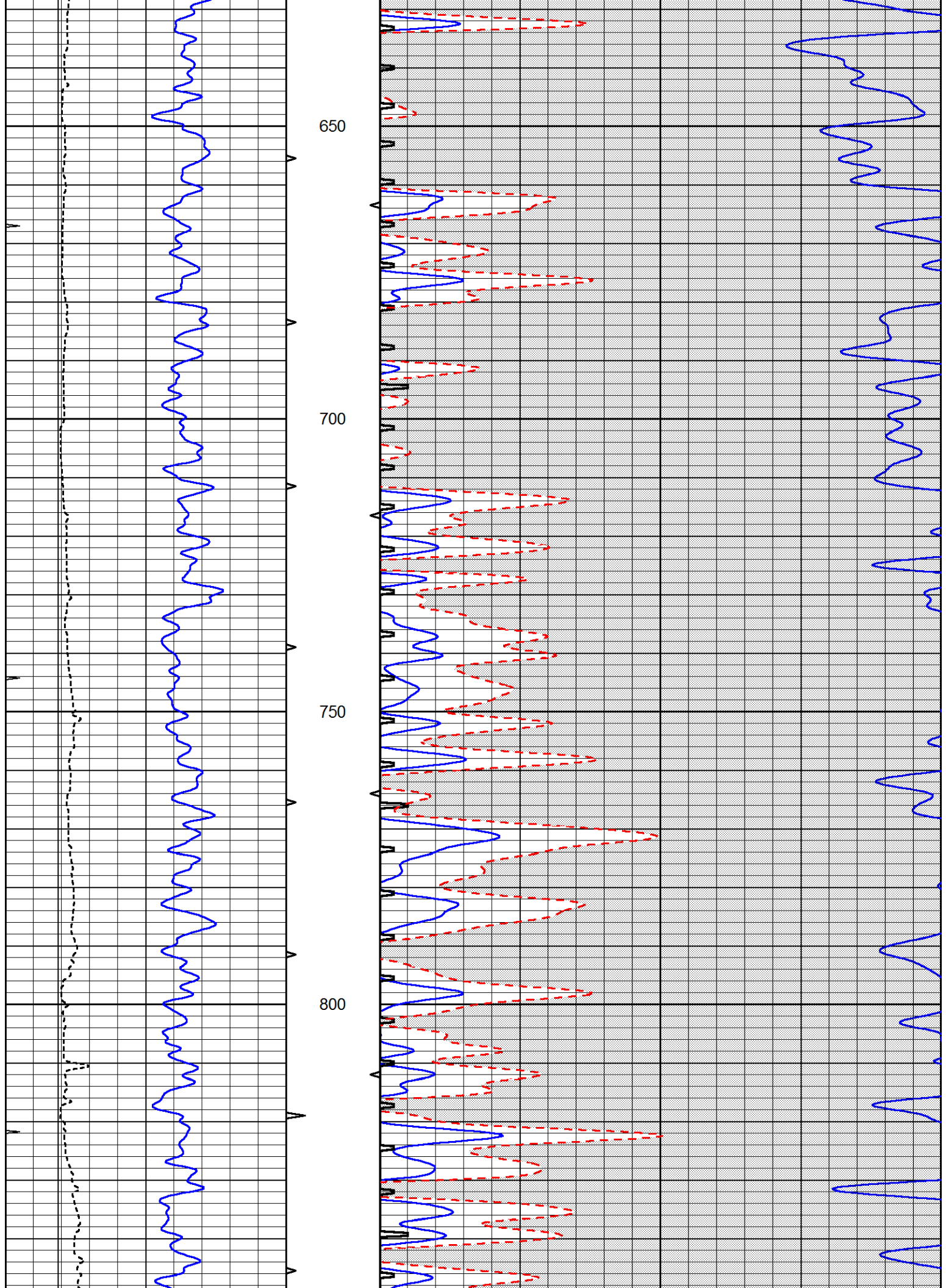


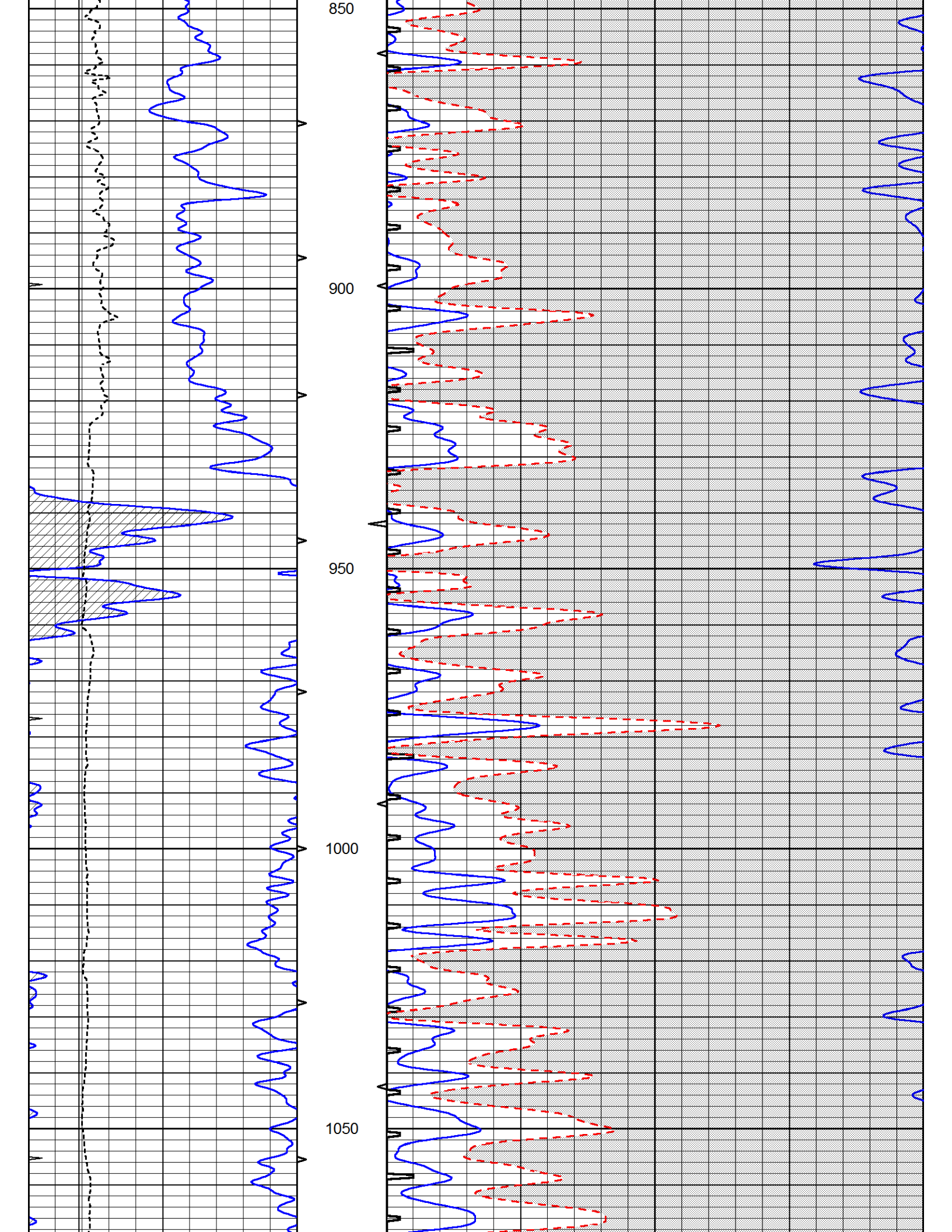
MAIN SECTION

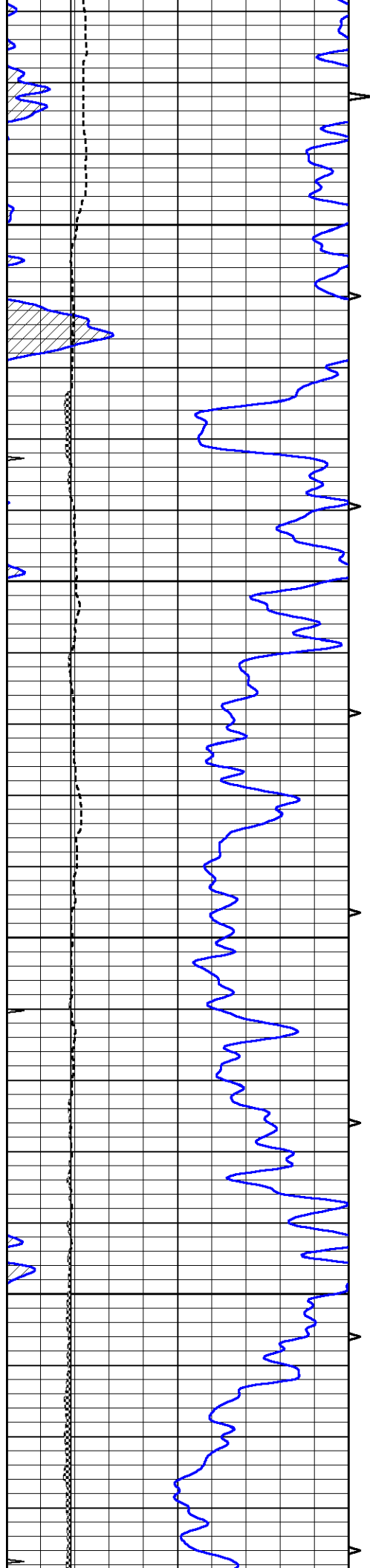
Database File 7431ddn.db
 Dataset Pathname pass12.2M
 Presentation Format _slt
 Dataset Creation Thu Jan 05 21:32:36 2023
 Charted by Depth in Feet scaled 1:240

0	GAMMA RAY (GAPI)	150	ABHV	140	DELTA TIME (usec/ft)	40
0	MINMK	20	10 (ft3) 0	30	SONIC POROSITY (pu)	-10
6	MELCAL (in)	16	TBHV	0	ITT (msec)	20
			0 (ft3) 10			







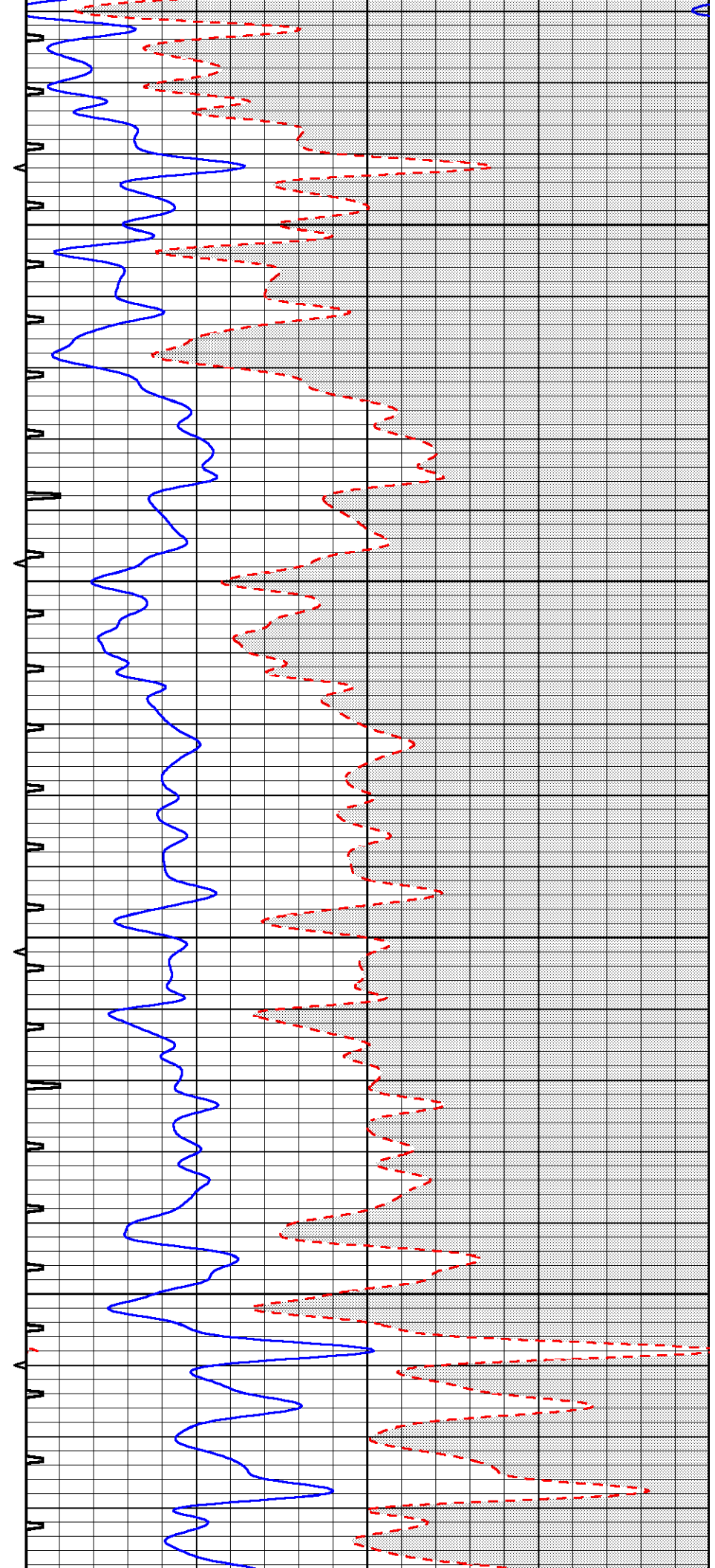


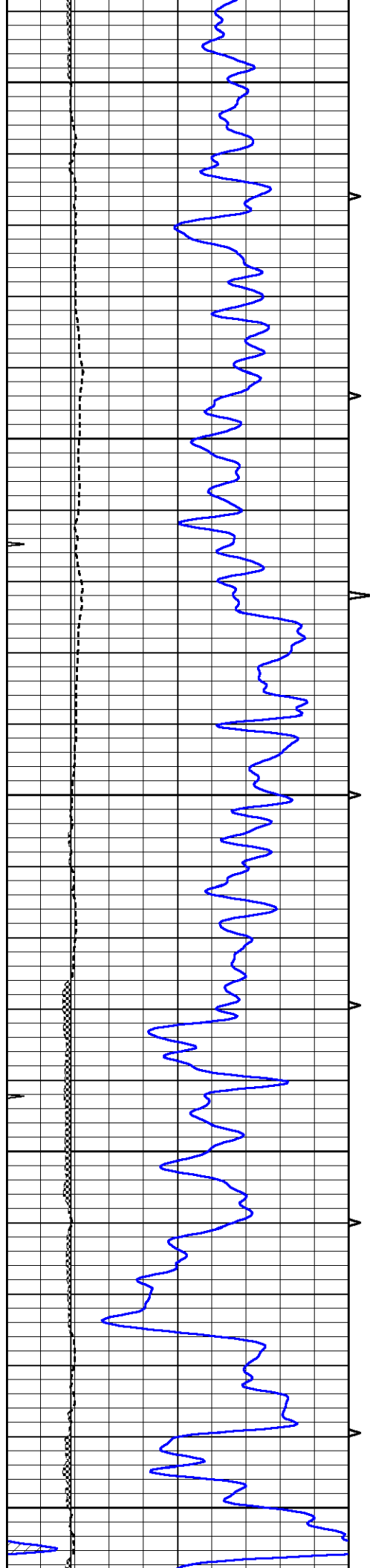
1100

1150

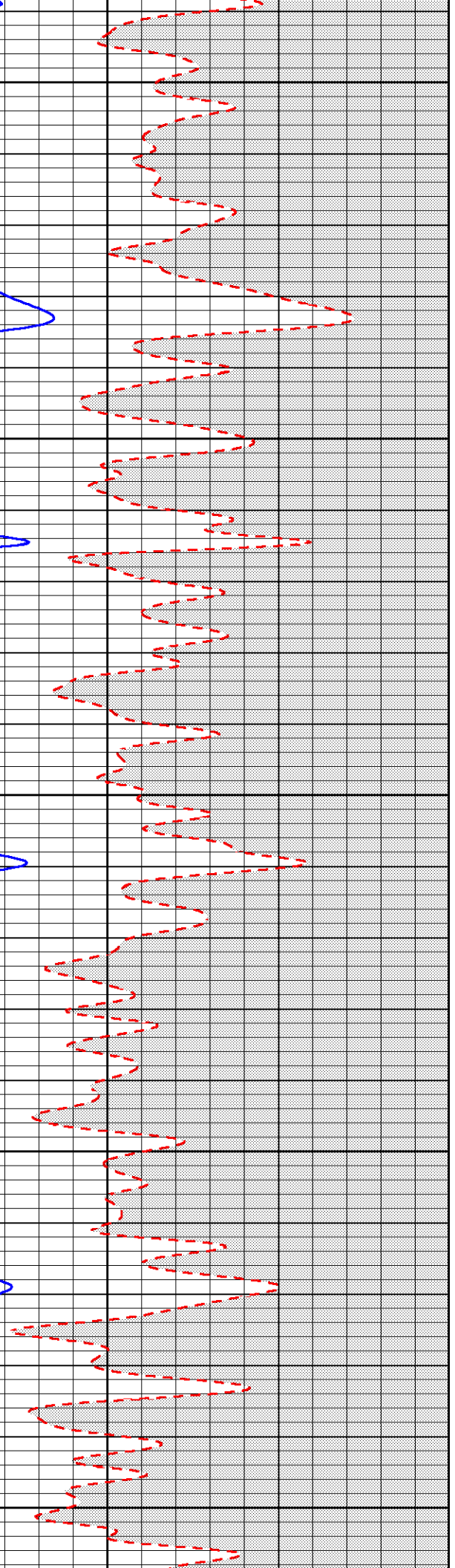
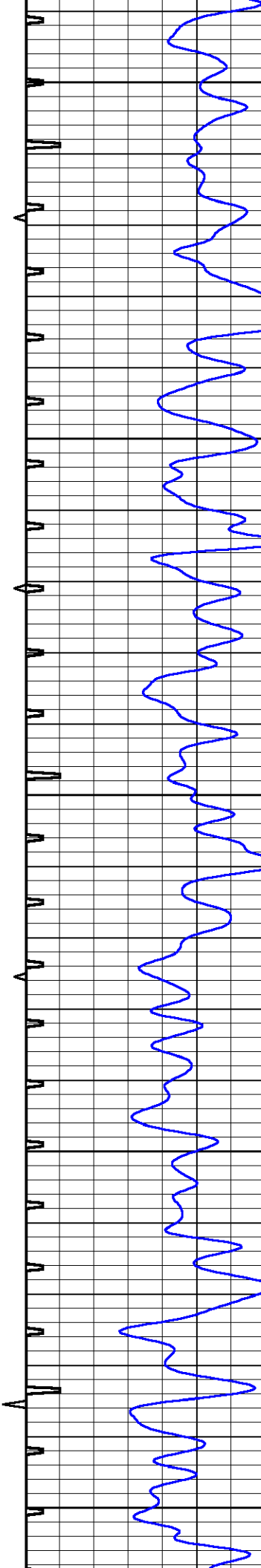
1200

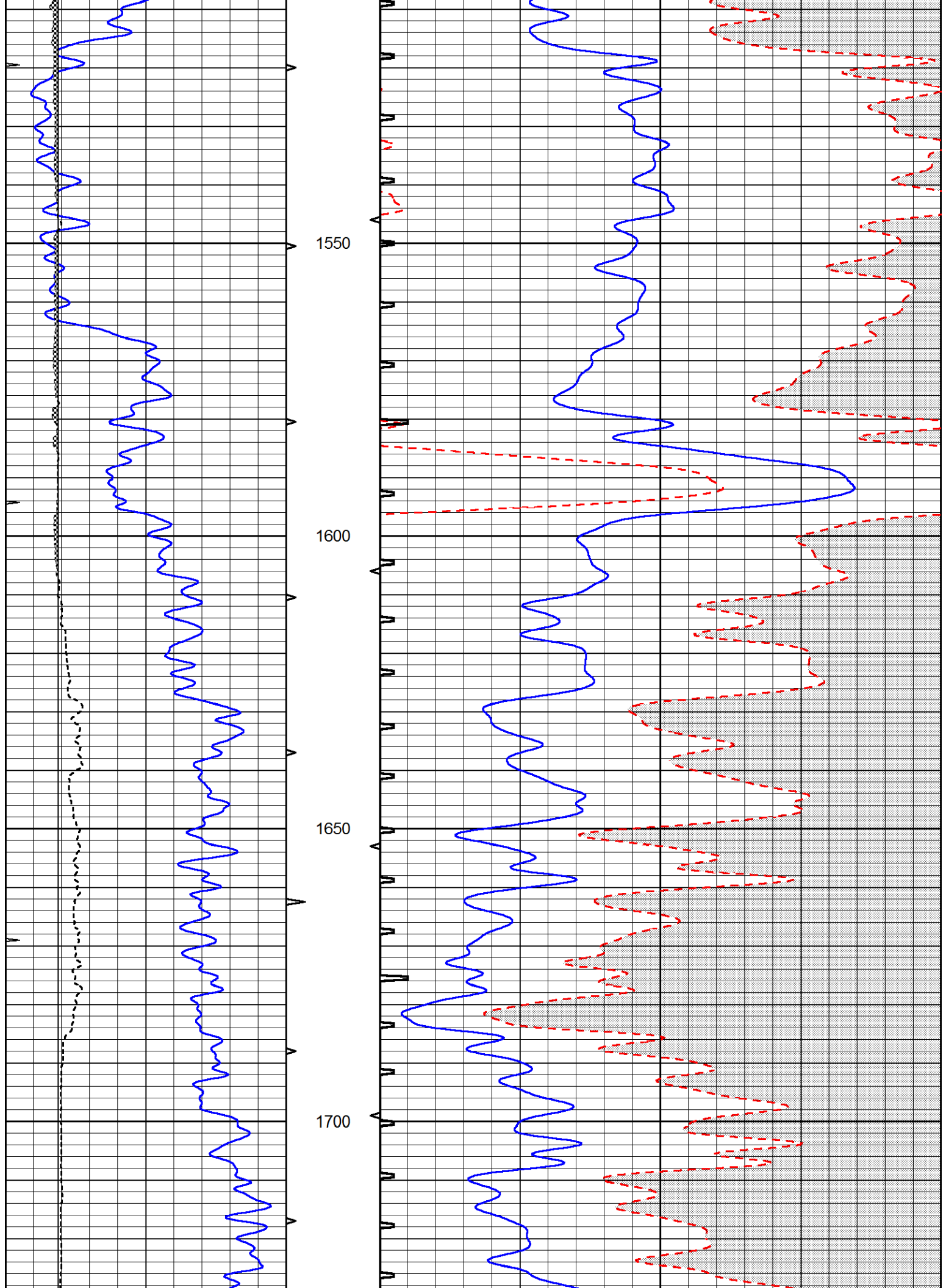
1250

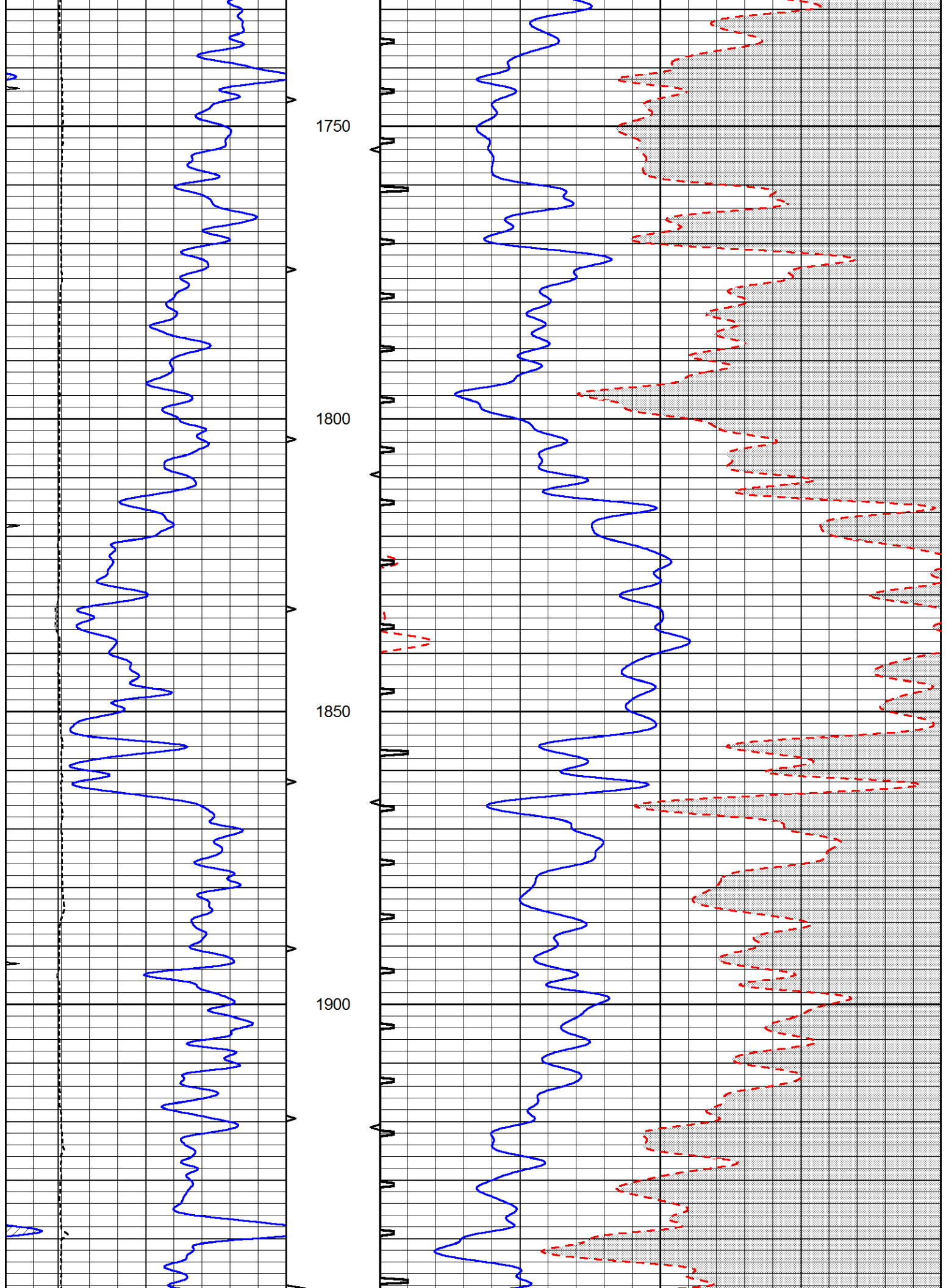


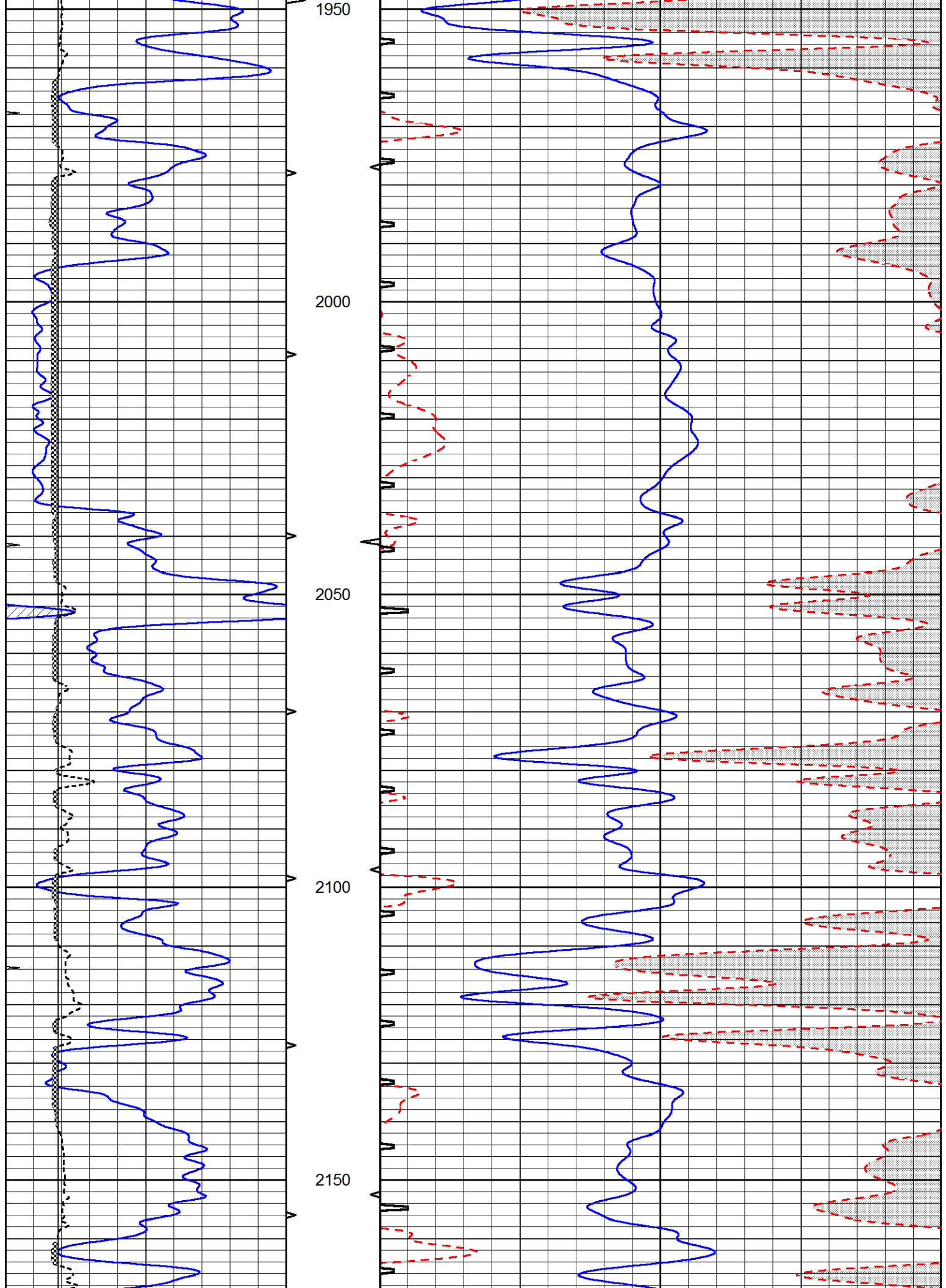


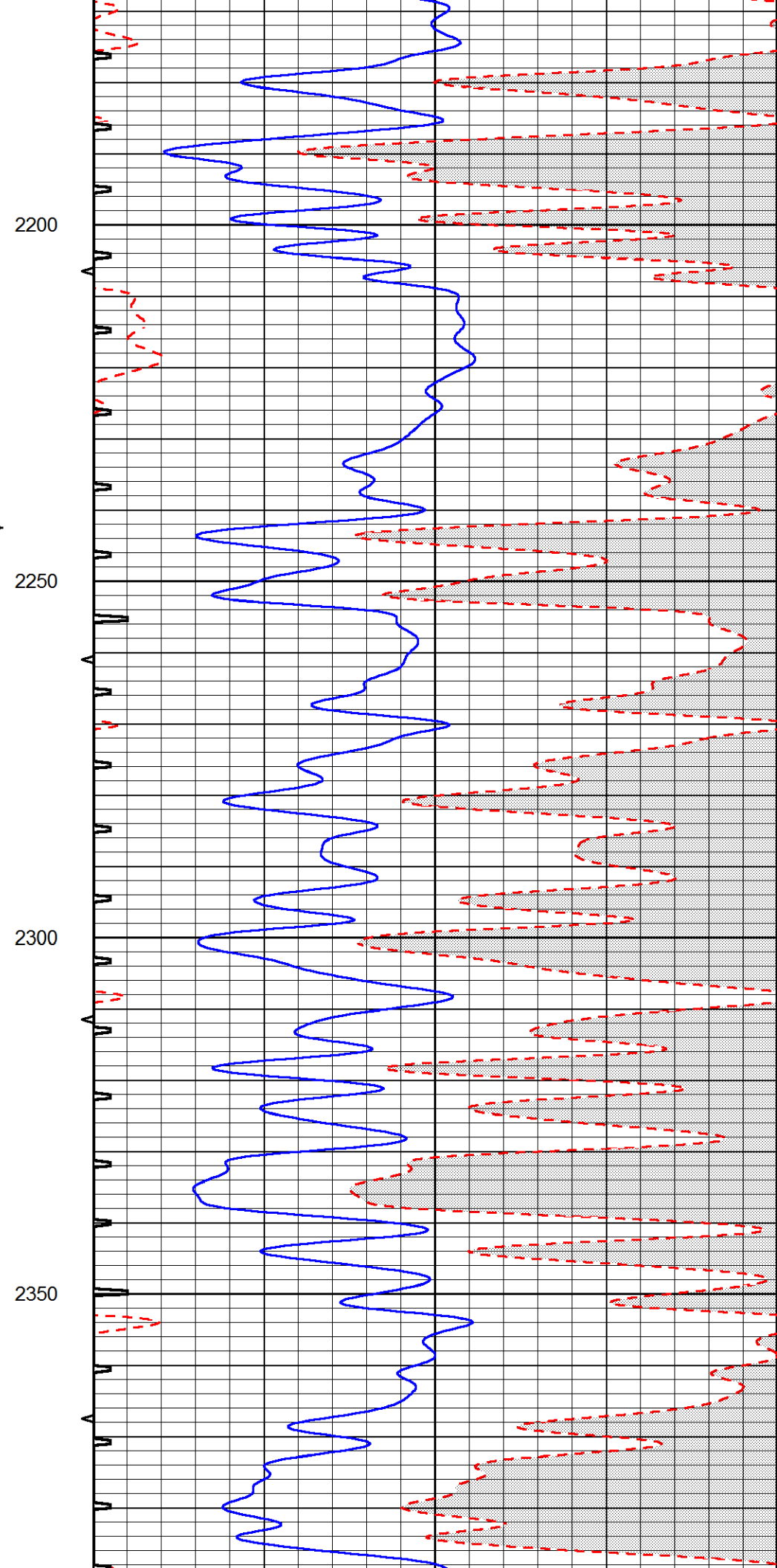
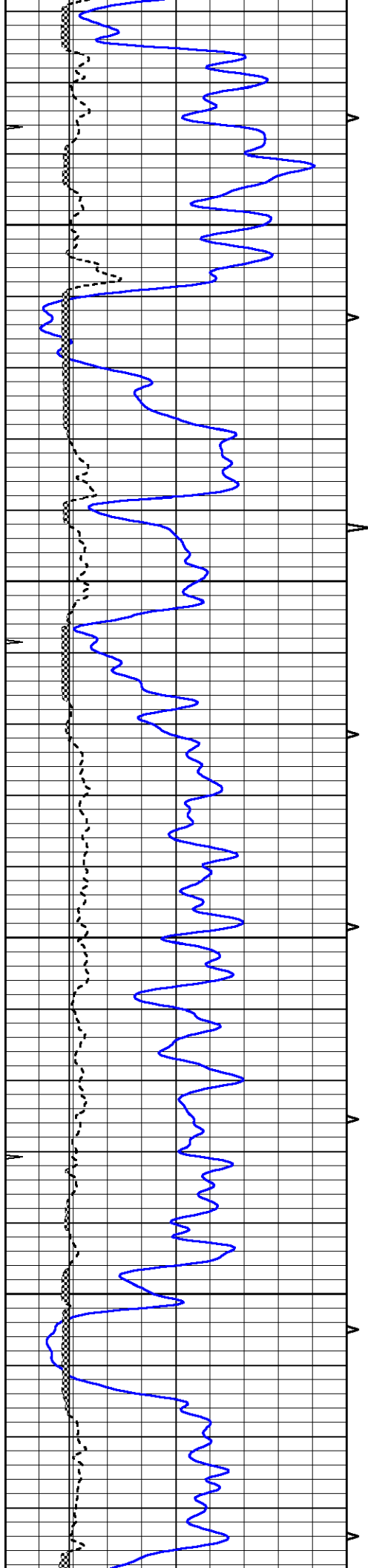
1300
1350
1400
1450
1500

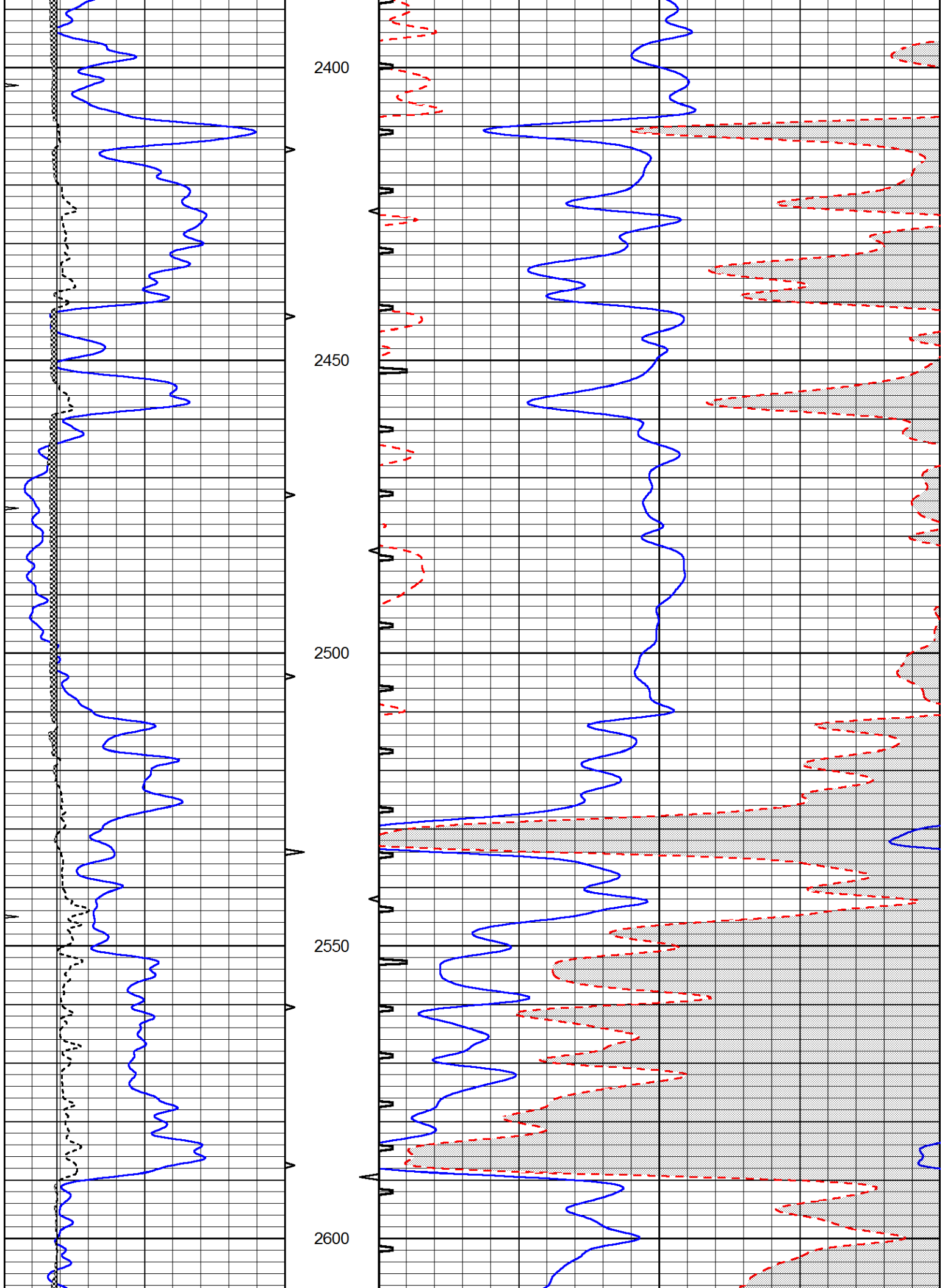


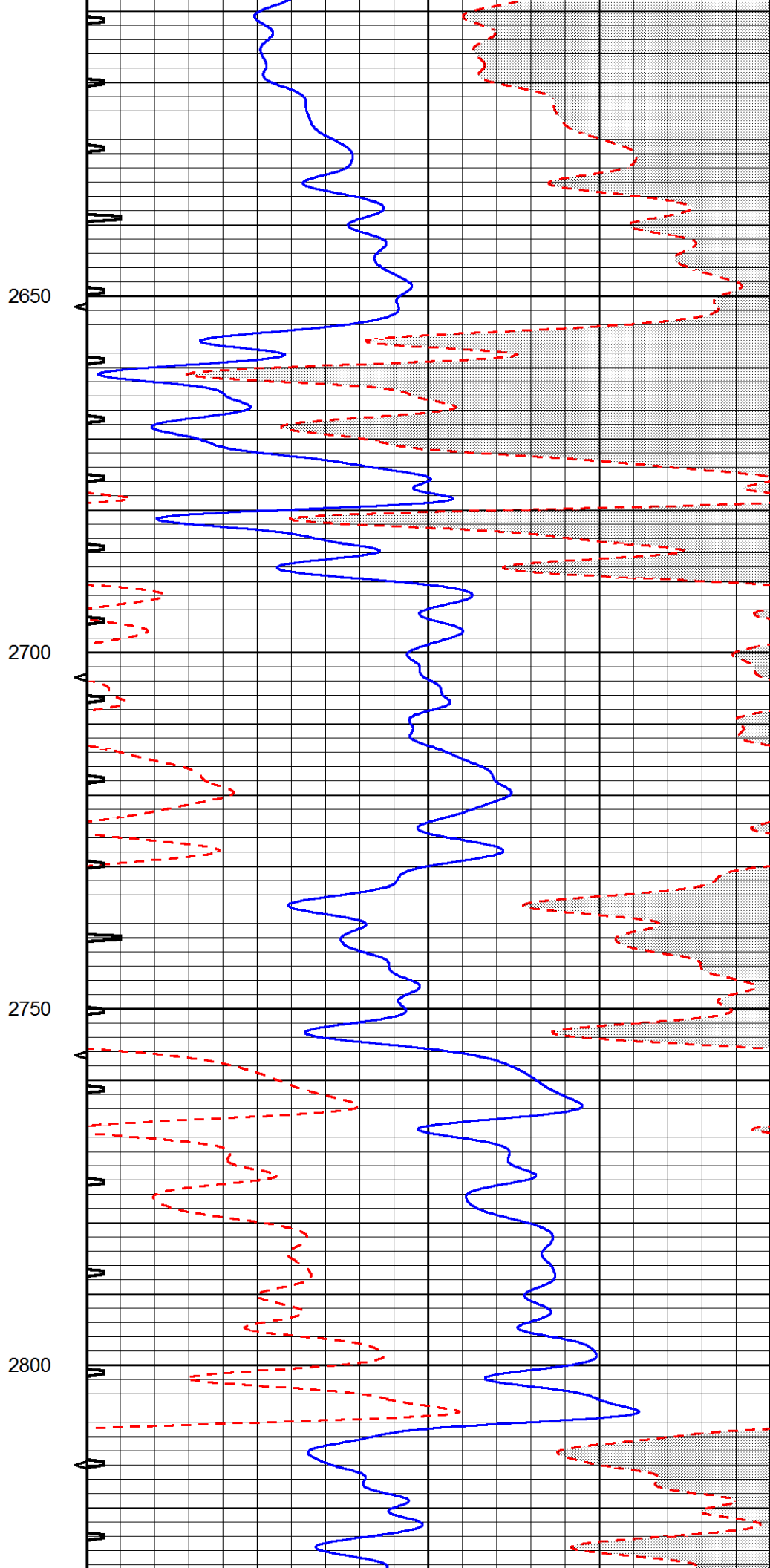
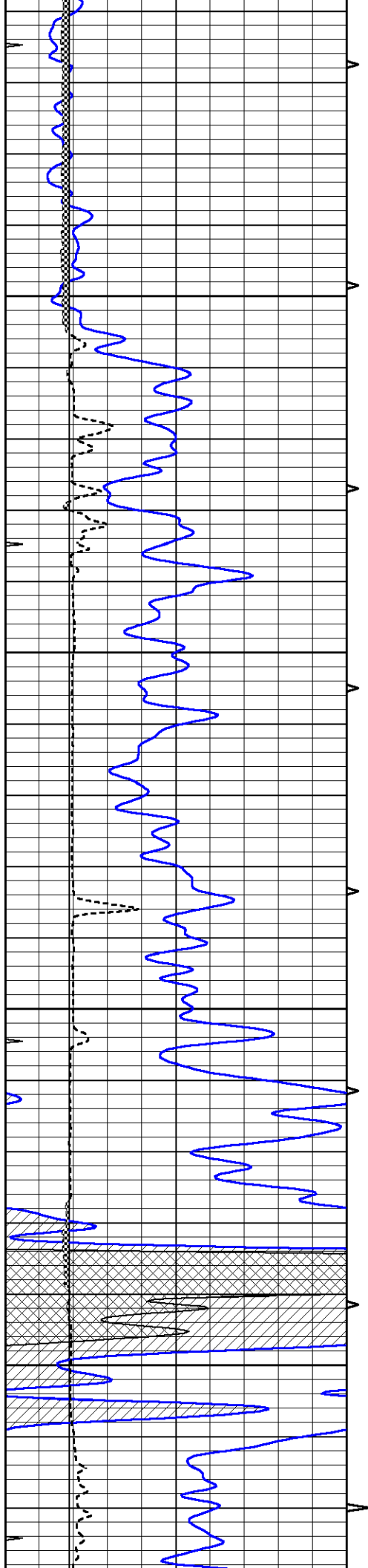




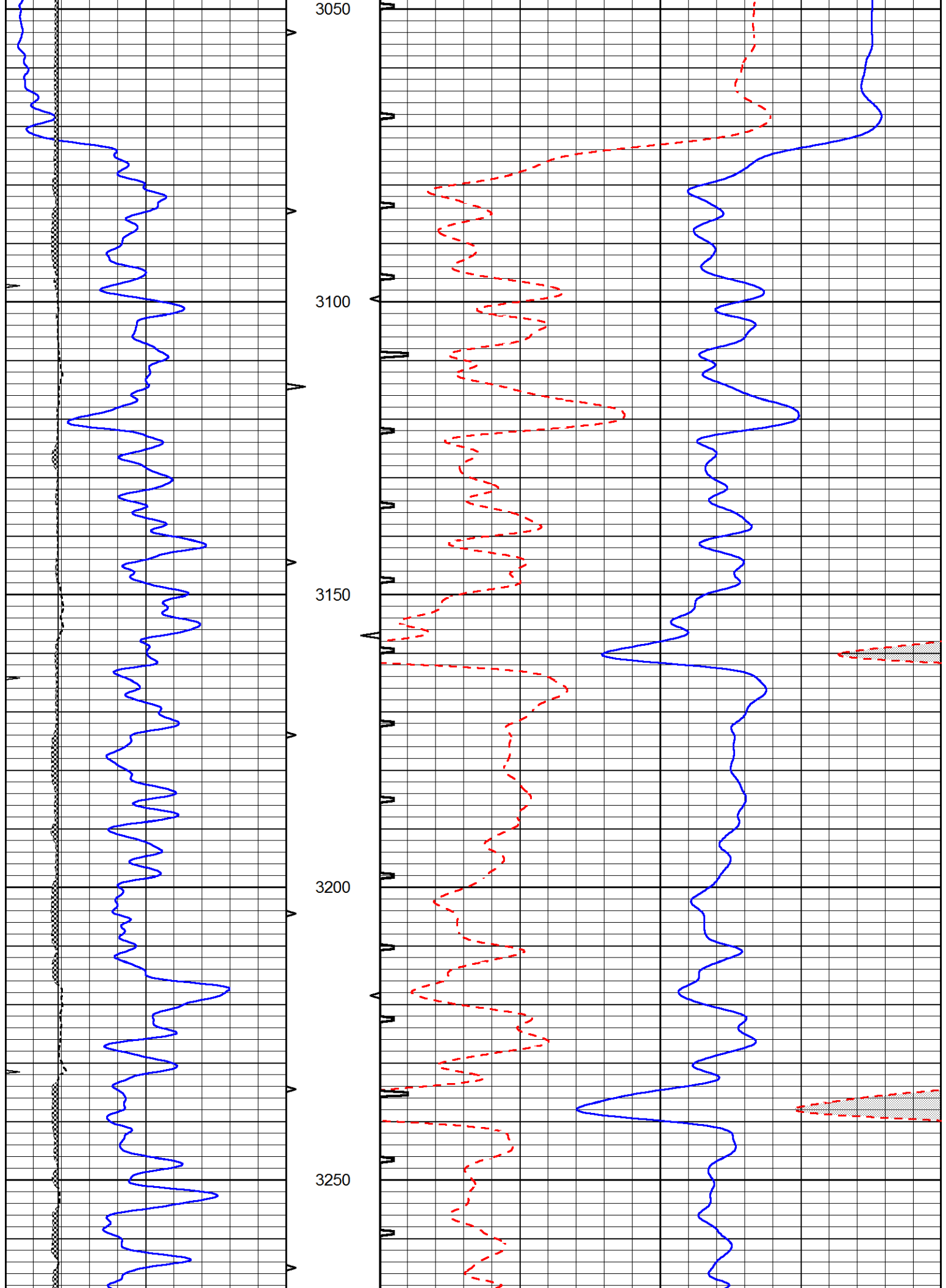


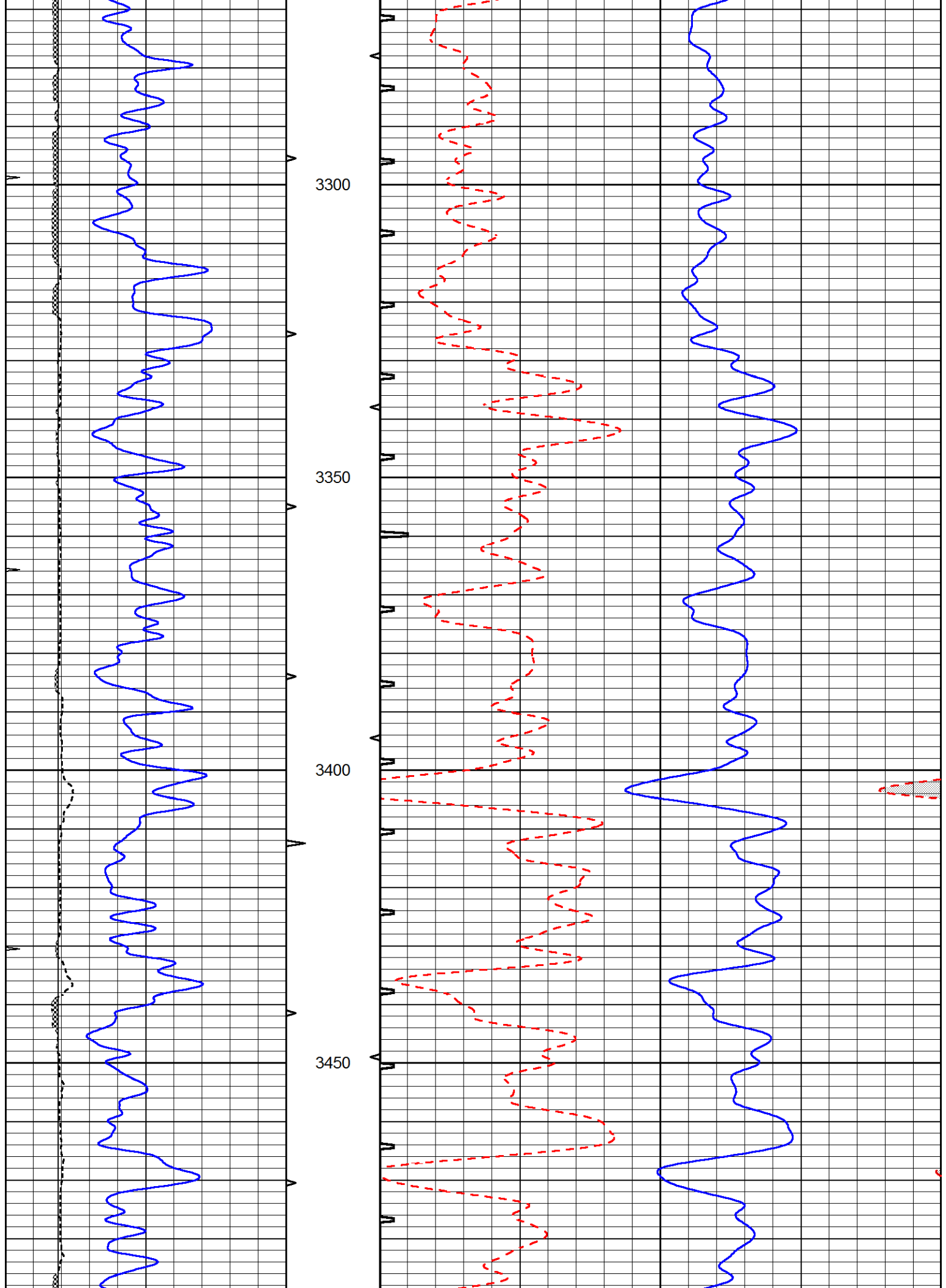


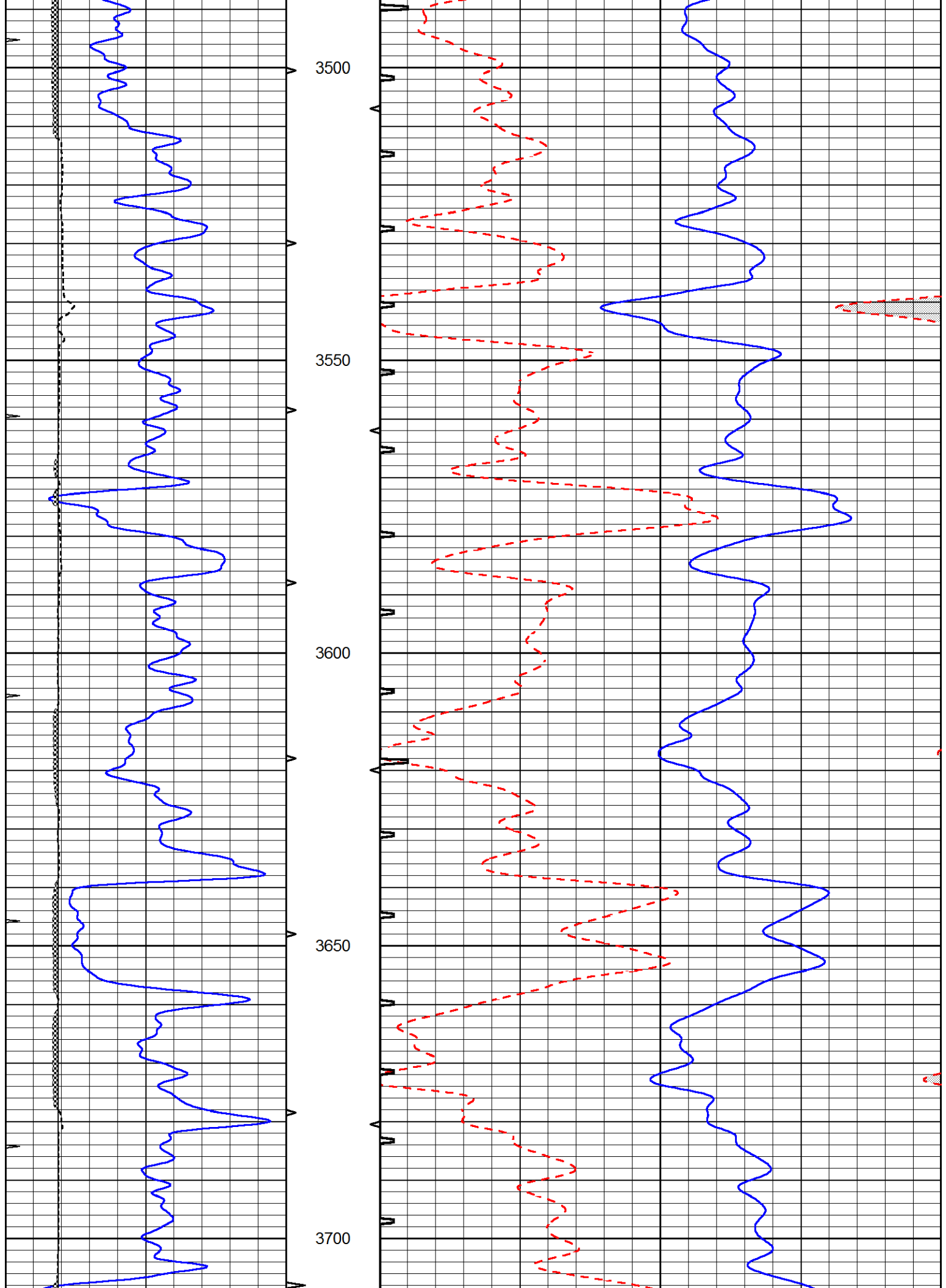


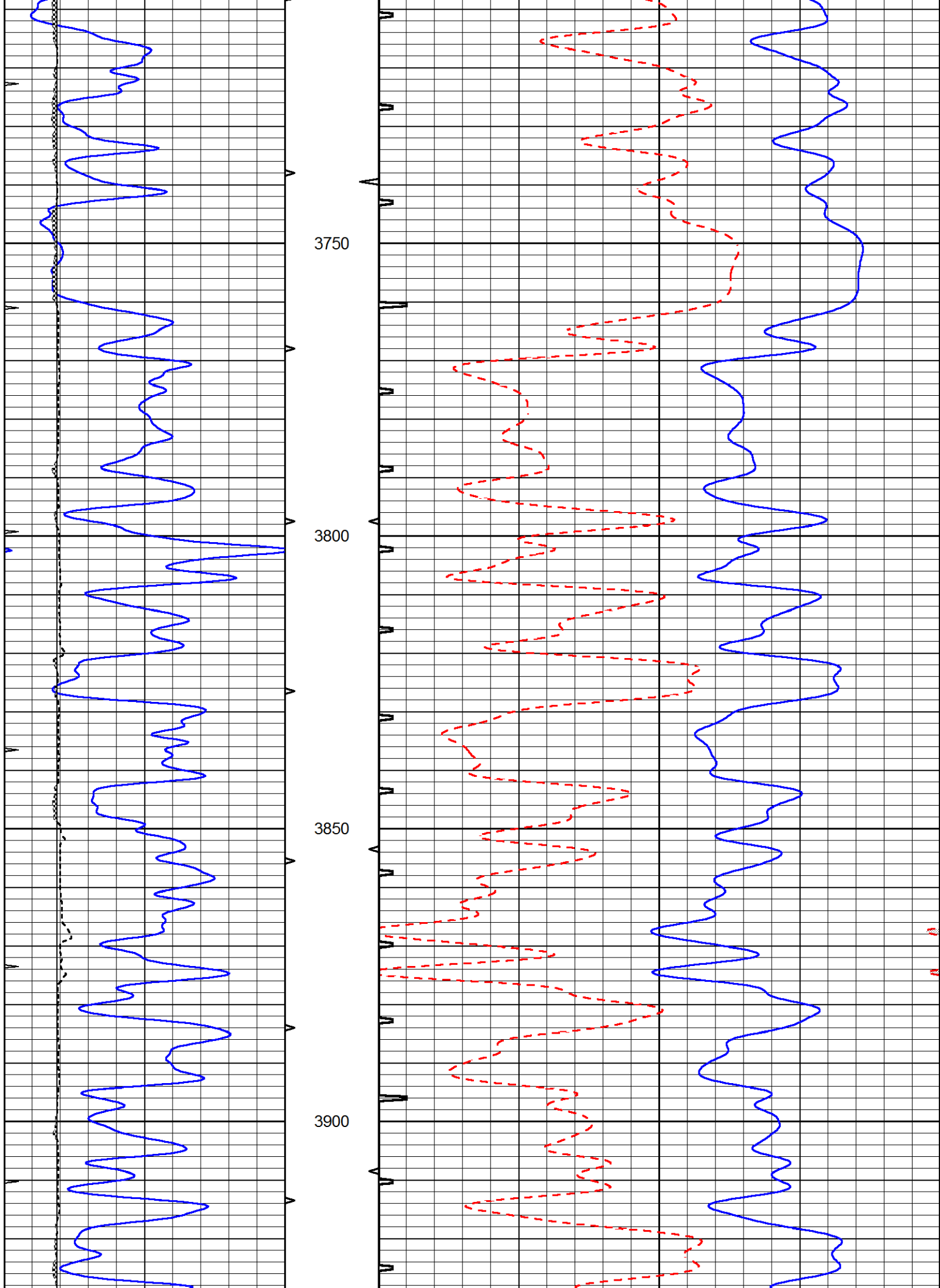


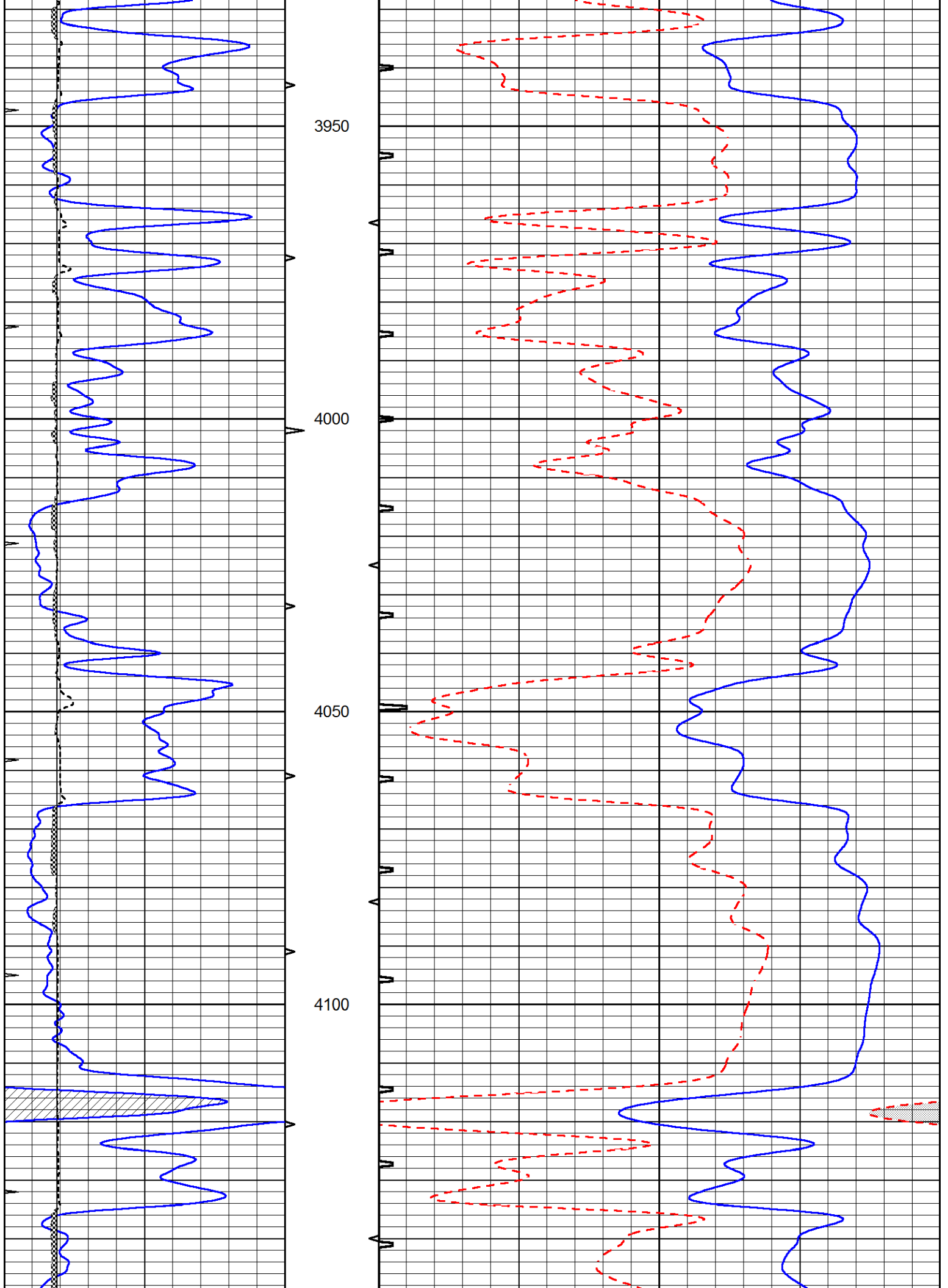


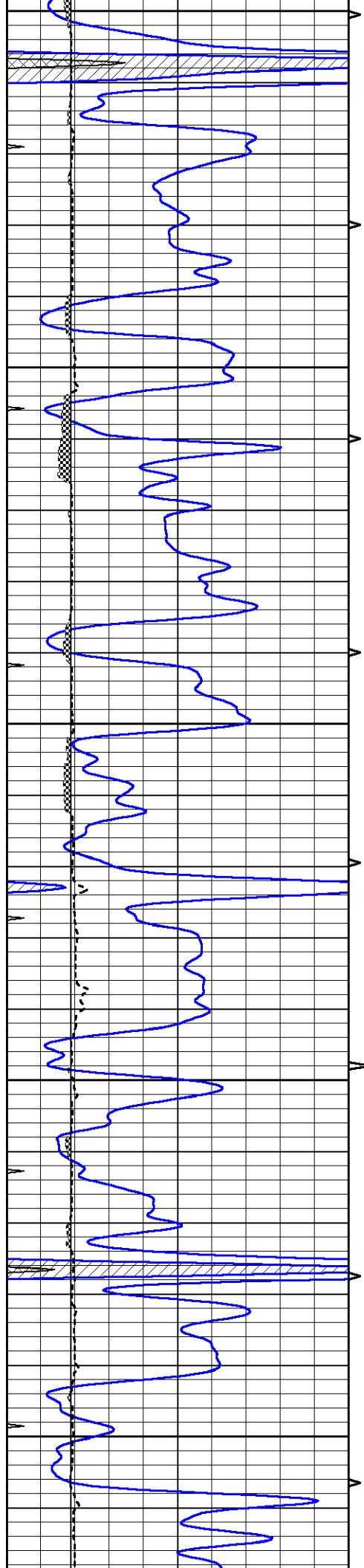




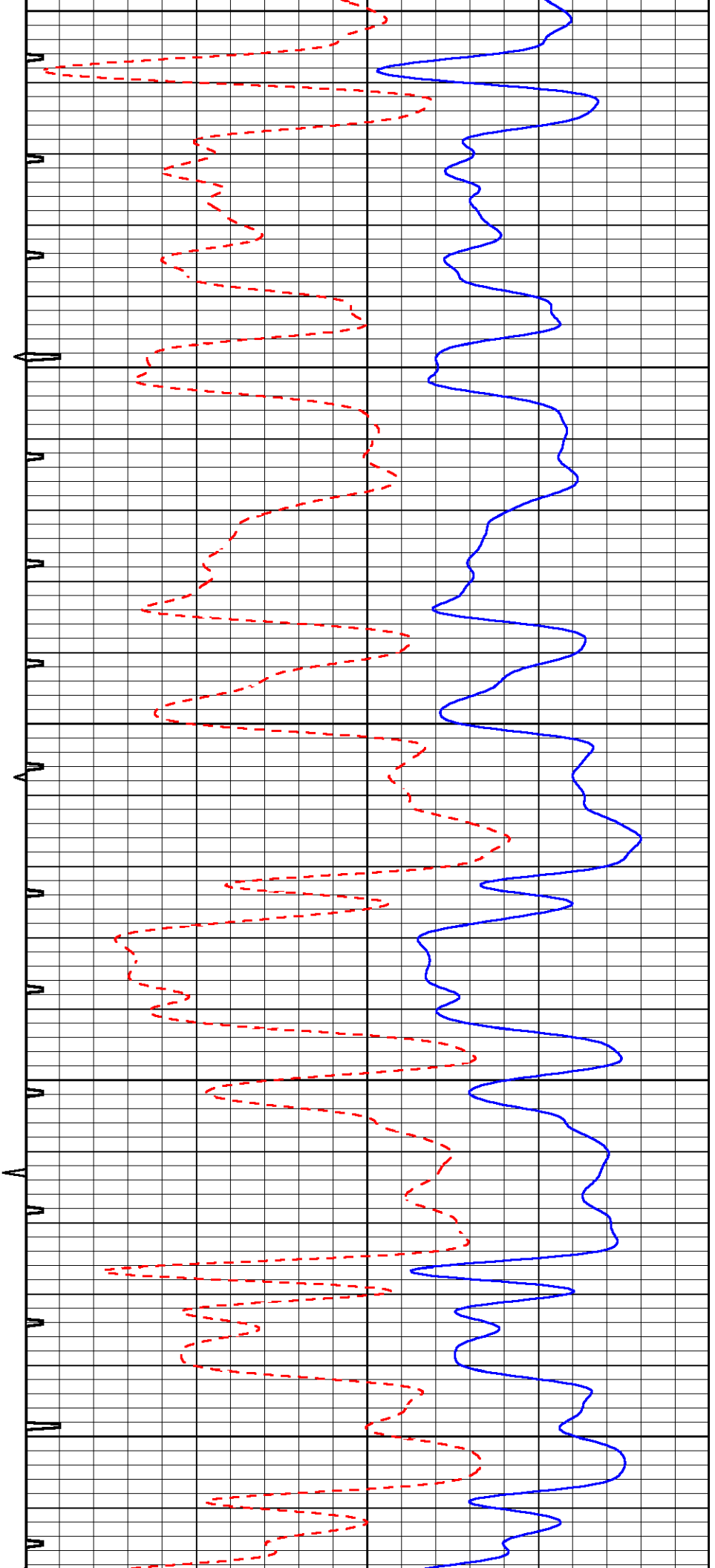


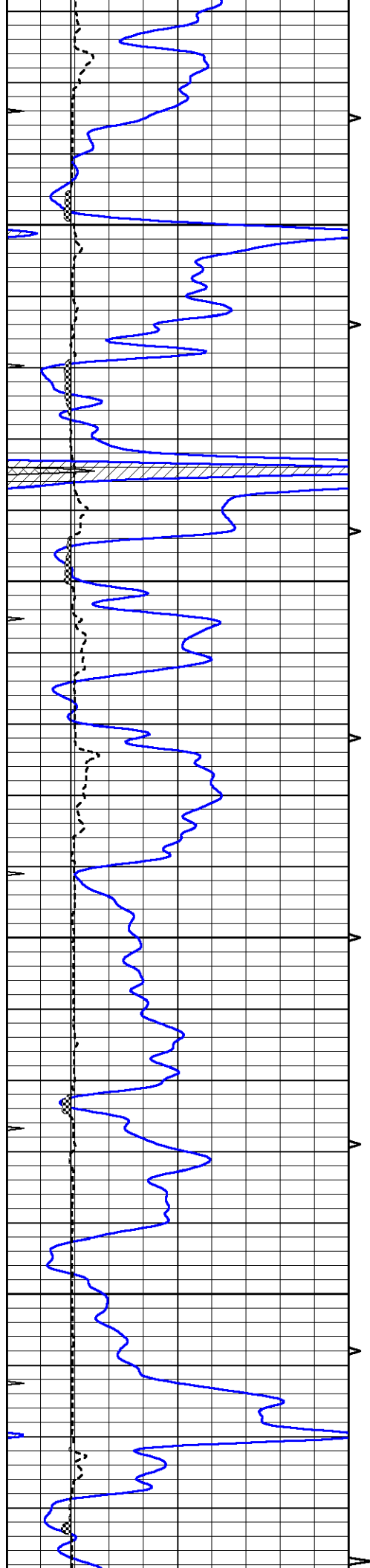






4150
4200
4250
4300
4350



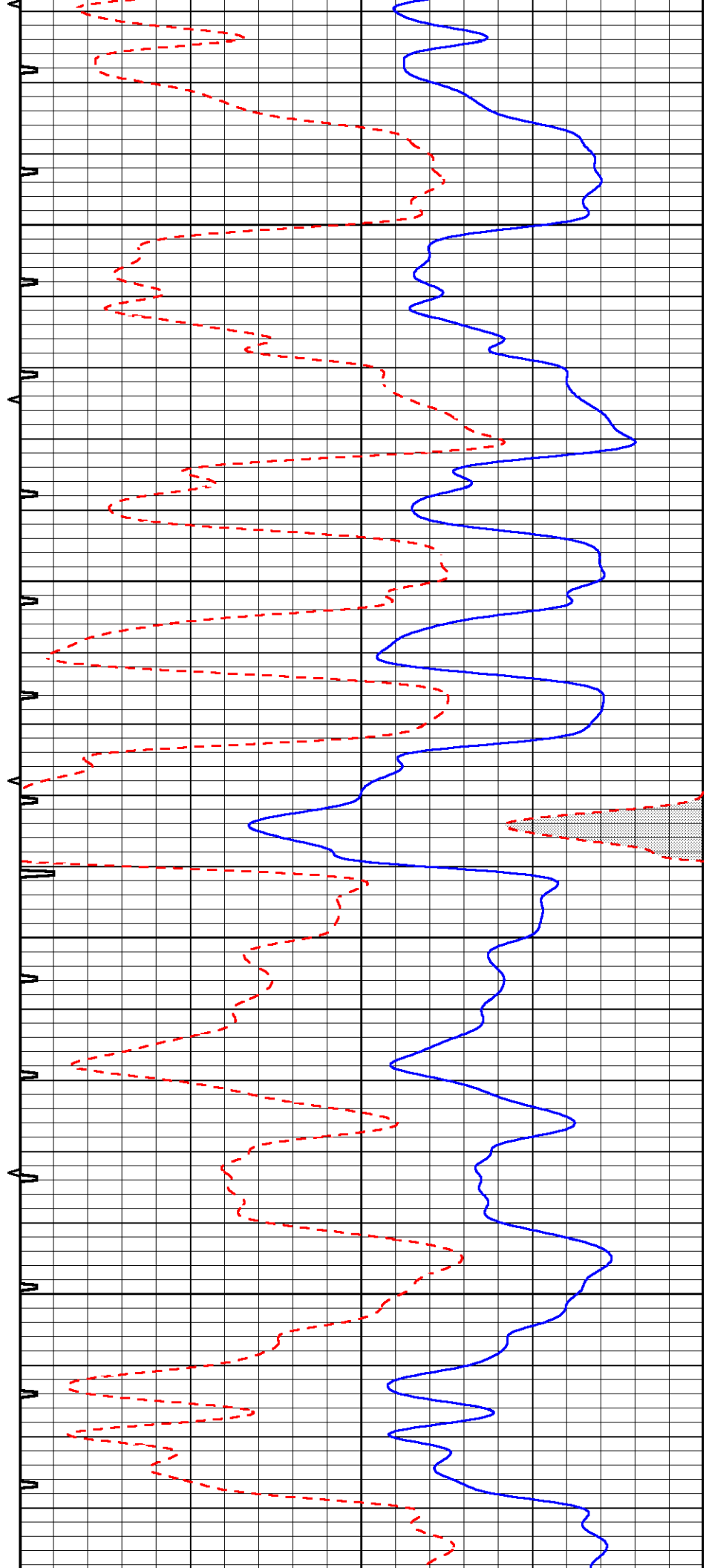


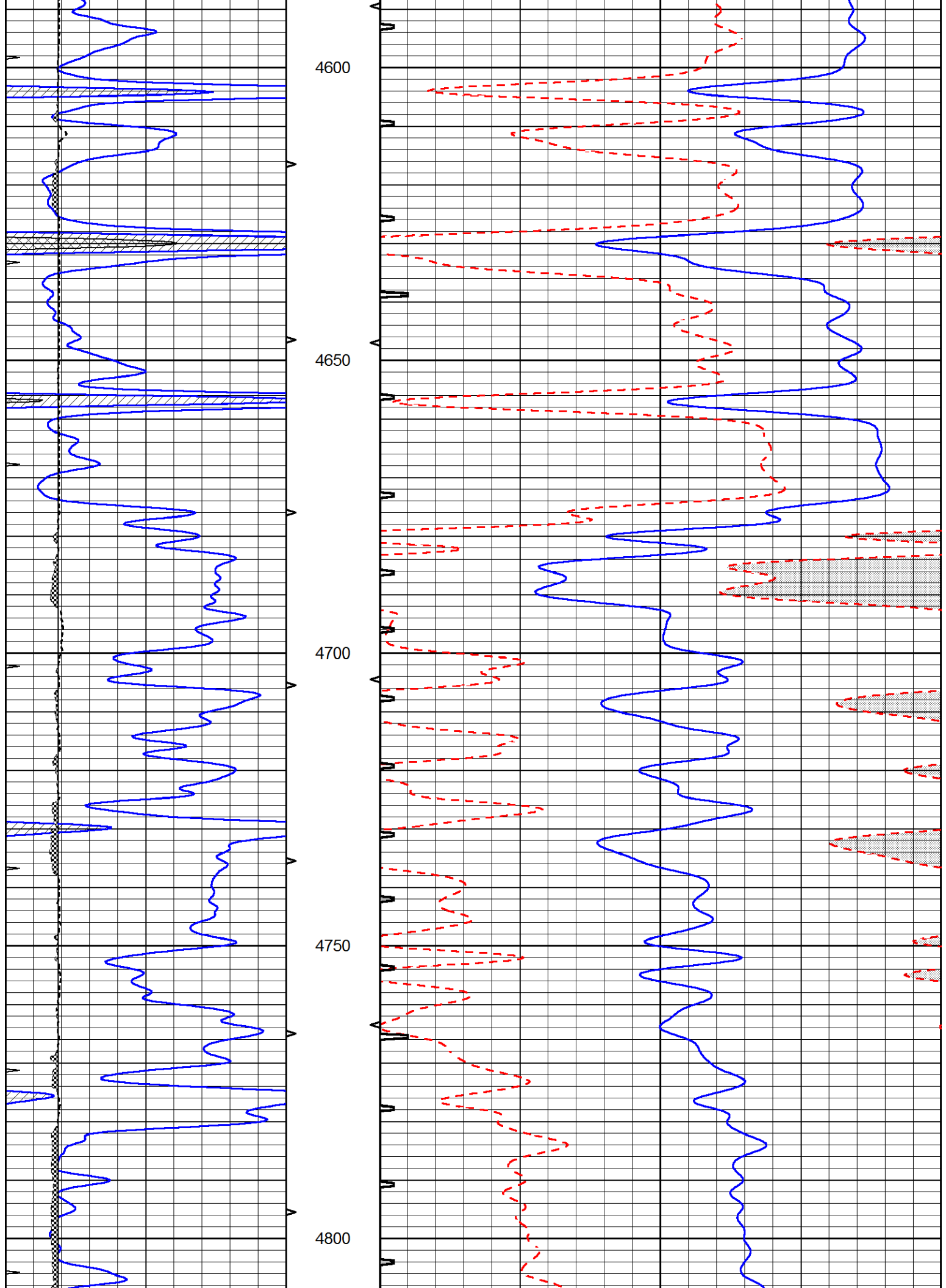
4400

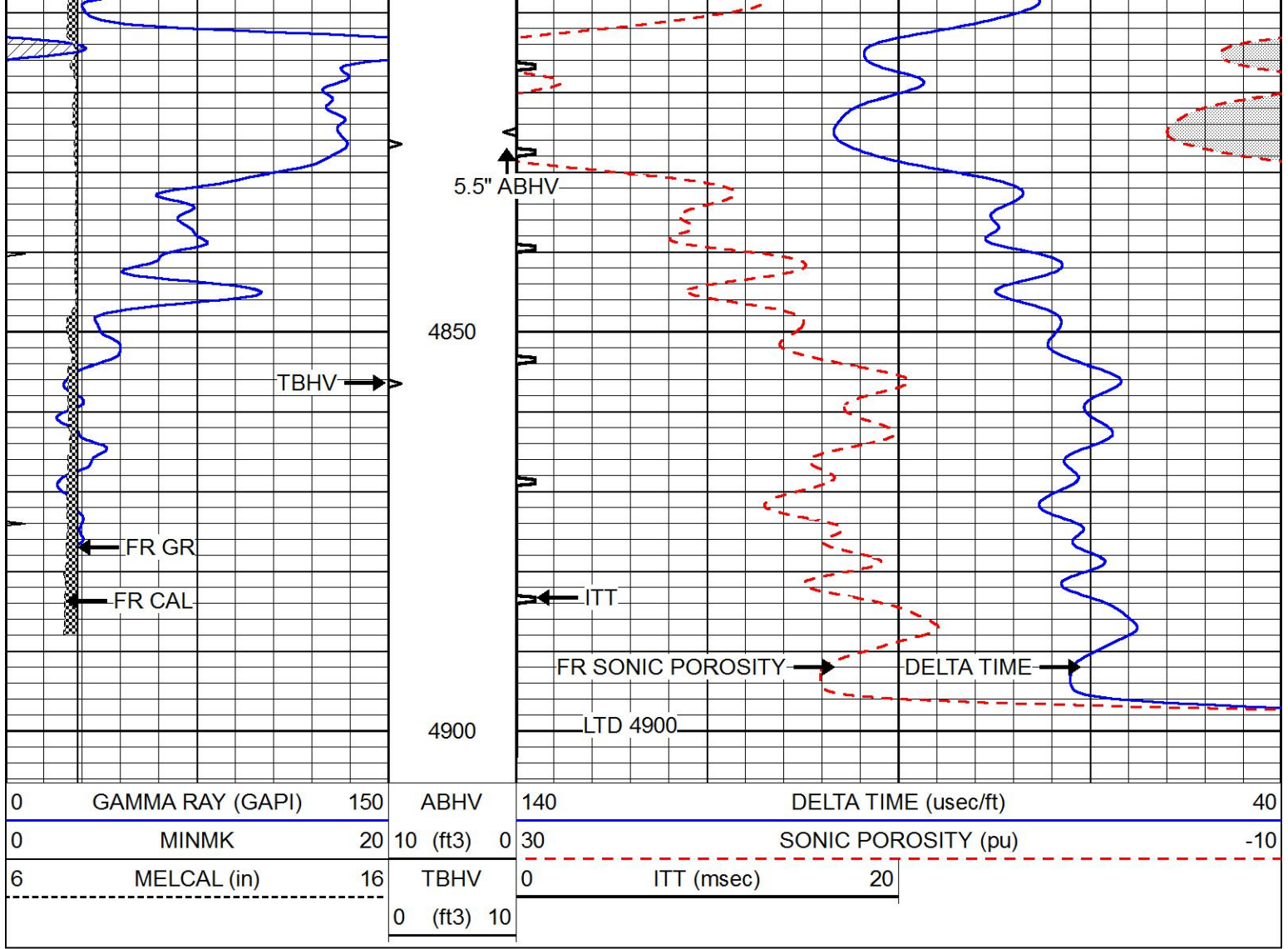
4450

4500

4550



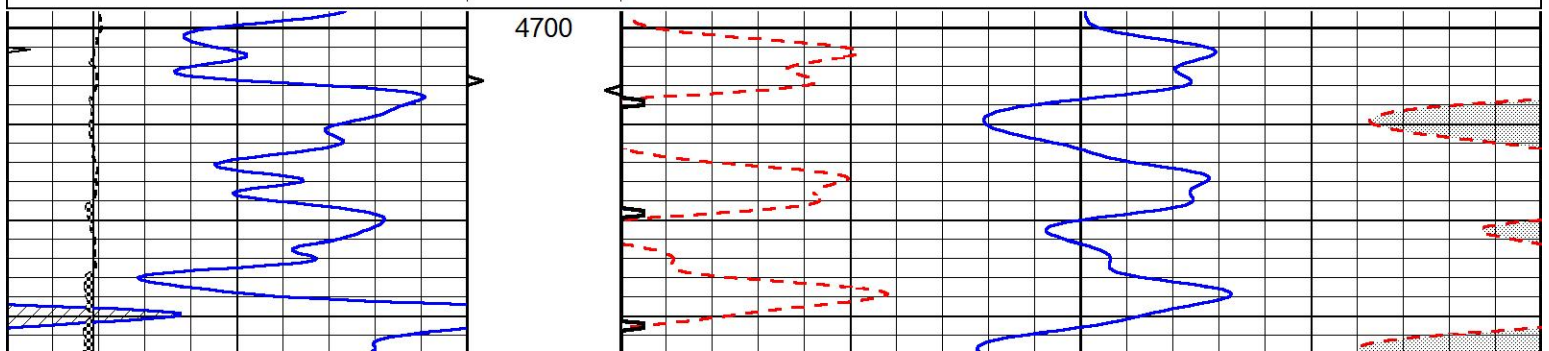


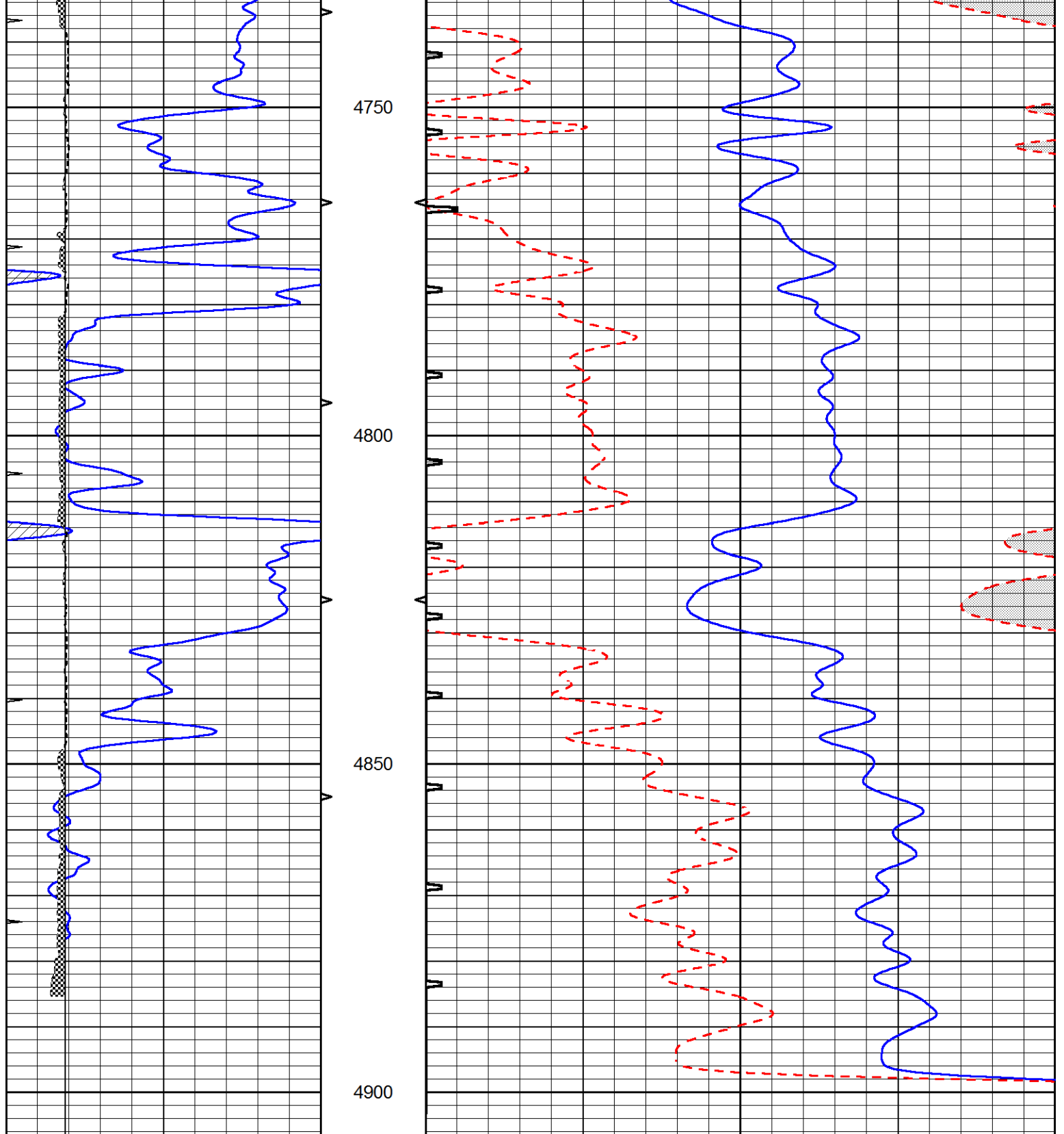


REPEAT SECTION

Database File 7431ddn.db
 Dataset Pathname pass11.2R
 Presentation Format _slt
 Dataset Creation Thu Jan 05 21:02:49 2023
 Charted by Depth in Feet scaled 1:240

0	GAMMA RAY (GAPI)	150	ABHV	140	DELTA TIME (usec/ft)	40
0	MINMK	20	10 (ft3) 0	30	SONIC POROSITY (pu)	-10
6	MELCAL (in)	16	TBHV	0	ITT (msec)	20
			0 (ft3) 10			





0	GAMMA RAY (GAPI)	150	ABHV	140	DELTA TIME (u sec/ft)	40
0	MINMK	20	10 (ft3) 0	30	SONIC POROSITY (pu)	-10
6	MELCAL (in)	16	TBHV	0	ITT (msec)	20
			0 (ft3) 10			