



SONIC LOG

Company ROYAL ENERGY
Well ALPERS#2
Field HUDSON SOUTH
County STAFFORD
State KANSAS

Company ROYAL ENERGY
Well ALPERS#2
Field HUDSON SOUTH
County STAFFORD State KANSAS

Location: API #: 15-185-24031-00-00
495' FNL & 2145' FWL
SEC 4 TWP 23S RGE 12W
Permanent Datum GROUND LEVEL Elevation 1841
Log Measured From KELLY BUSHING 10' A.G.L.
Drilling Measured From KELLY BUSHING
Other Services CDL/CNL/DIL
Elevation K.B. 1851
D.F. 1849
G.L. 1841

Date	09/08/18
Run Number	TWO
Depth Driller	3800
Depth Logger	3798
Bottom Logged Interval	3788
Top Log Interval	50
Casing Driller	8 5/8" @ 340
Casing Logger	340
Bit Size	7 7/8"
Type Fluid in Hole	CHEMICAL MUD
Density / Viscosity	9.0/42
pH / Fluid Loss	10.5/10.2
Source of Sample	FLOWLINE
Rm @ Meas. Temp	.60@78
Rmt @ Meas. Temp	.45@78
Rmc @ Meas. Temp	.72@78
Source of Rmf / Rmc	MEASURED
Rm @ BHT	.41@114
Time Circulation Stopped	2 HOURS
Time Logger on Bottom	///
Maximum Recorded Temperature	114F
Equipment Number	1523
Location	HAYS, KANSAS
Recorded By	GUS PFANENSTIEL
Witnessed By	ELI FELTS

<<< Fold Here >>>

All interpretations are opinions based on inferences from electrical or other measurements and we cannot and do not guarantee the accuracy or correctness of any interpretation, and we shall not, except in the case of gross or willful negligence on our part, be liable or responsible for any loss, costs, damages, or expenses incurred or sustained by anyone resulting from any interpretation made by any of our officers, agents or employees. These interpretations are also subject to our general terms and conditions set out in our current Price Schedule.

Comments

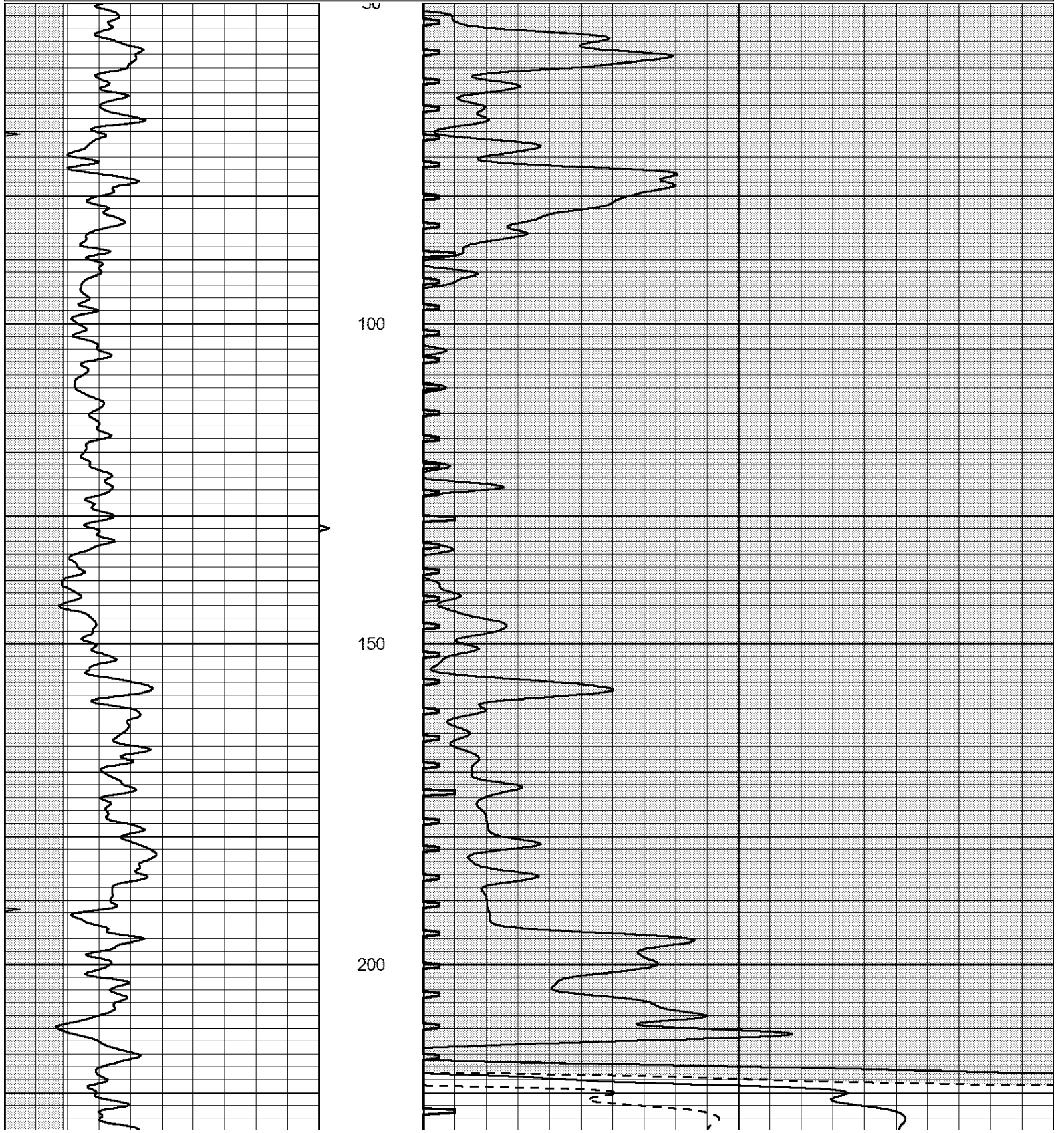
THANK YOU FOR USING ELI WIRELINE, HAYS, KS. (785) 628-6395
DIRECTIONS
1/2 EAST OF HUDSON, SOUTH 1 MILE,
3/4 EAST, SOUTH INTO.

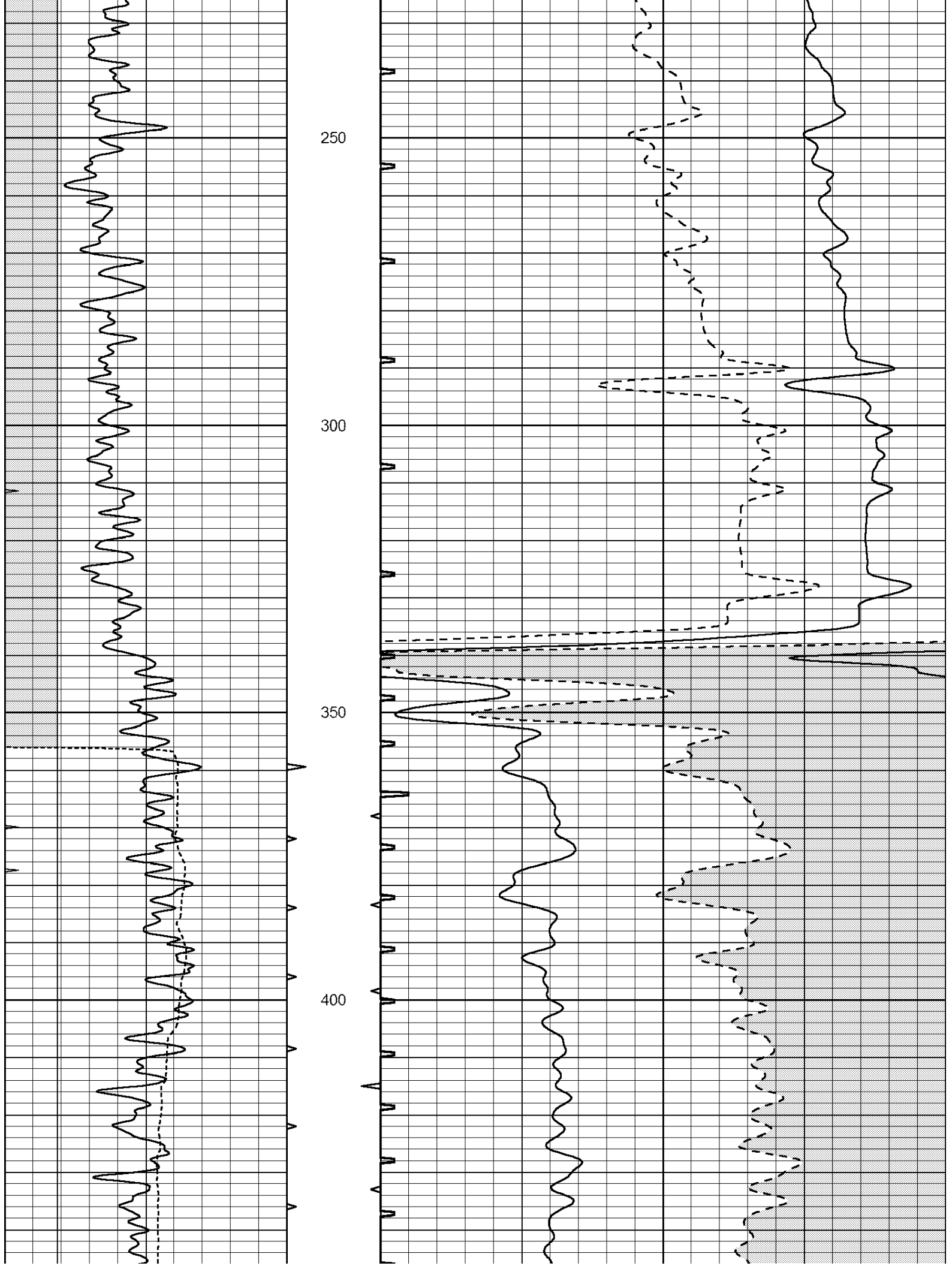


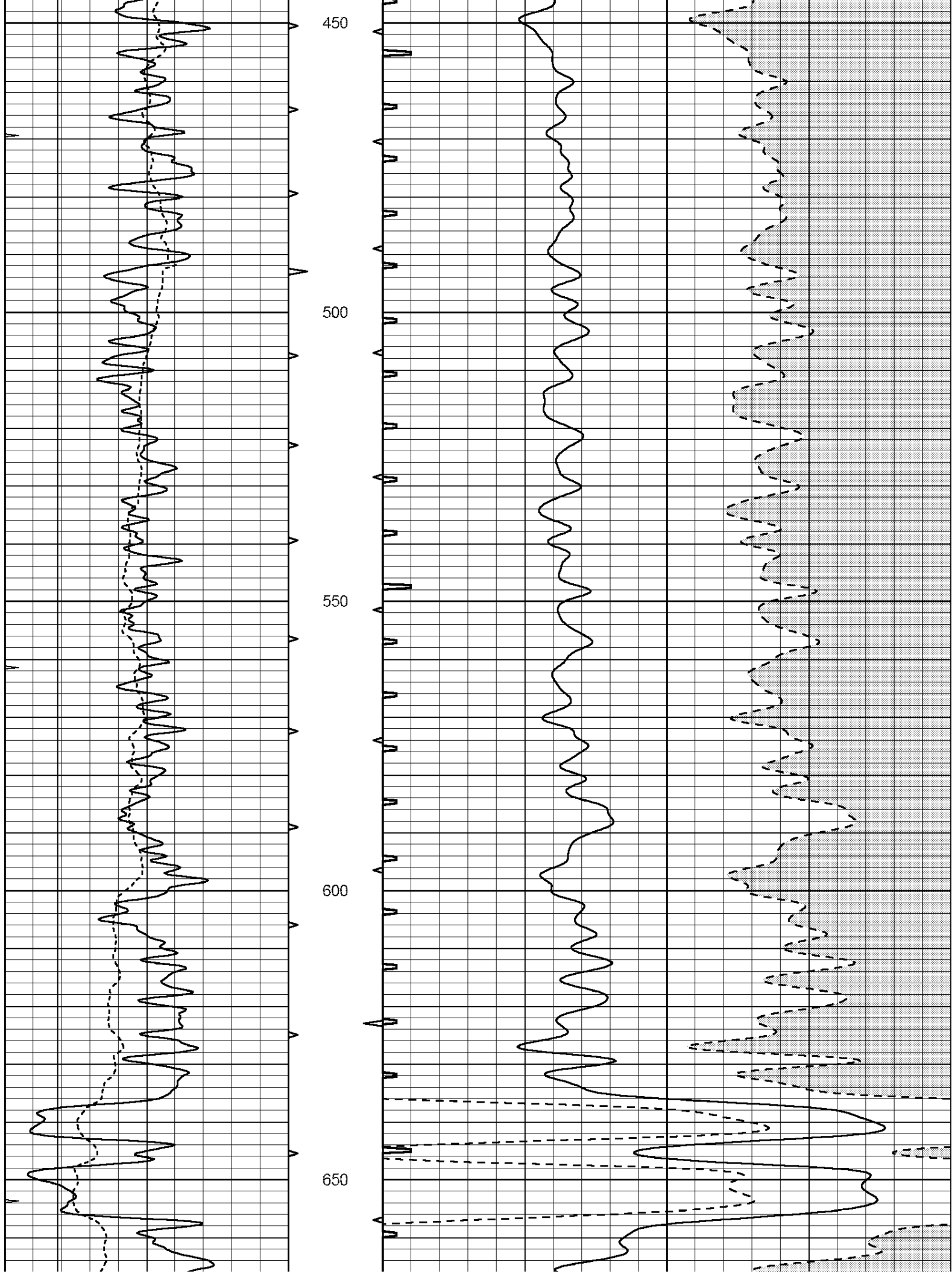
MAIN PASS

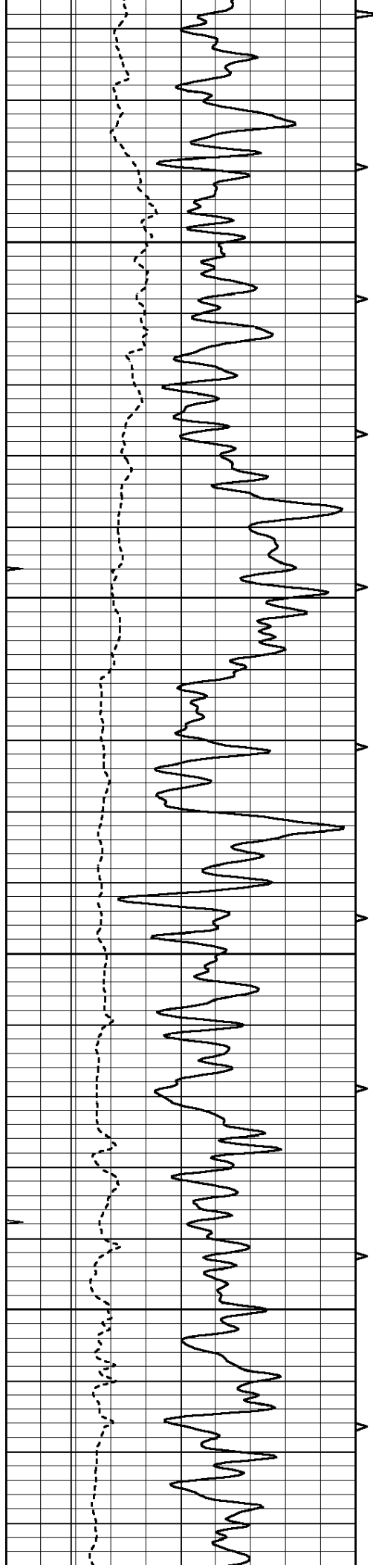
Database File: 2914pe.db
 Dataset Pathname: pass7.1
 Presentation Format: _slt
 Dataset Creation: Sat Sep 08 12:44:01 2018
 Charted by: Depth in Feet scaled 1:240

0	GAMMA RAY (GAPI)	150	ABHV	140	DELTA TIME (usec/ft)	40	
6	CALIPER (in)	16	10 (ft3)	0	30	SONIC POROSITY (pu)	-10
0	MINMK	20	TBHV	0	ITT (msec)	20	
			0 (ft3)	10			







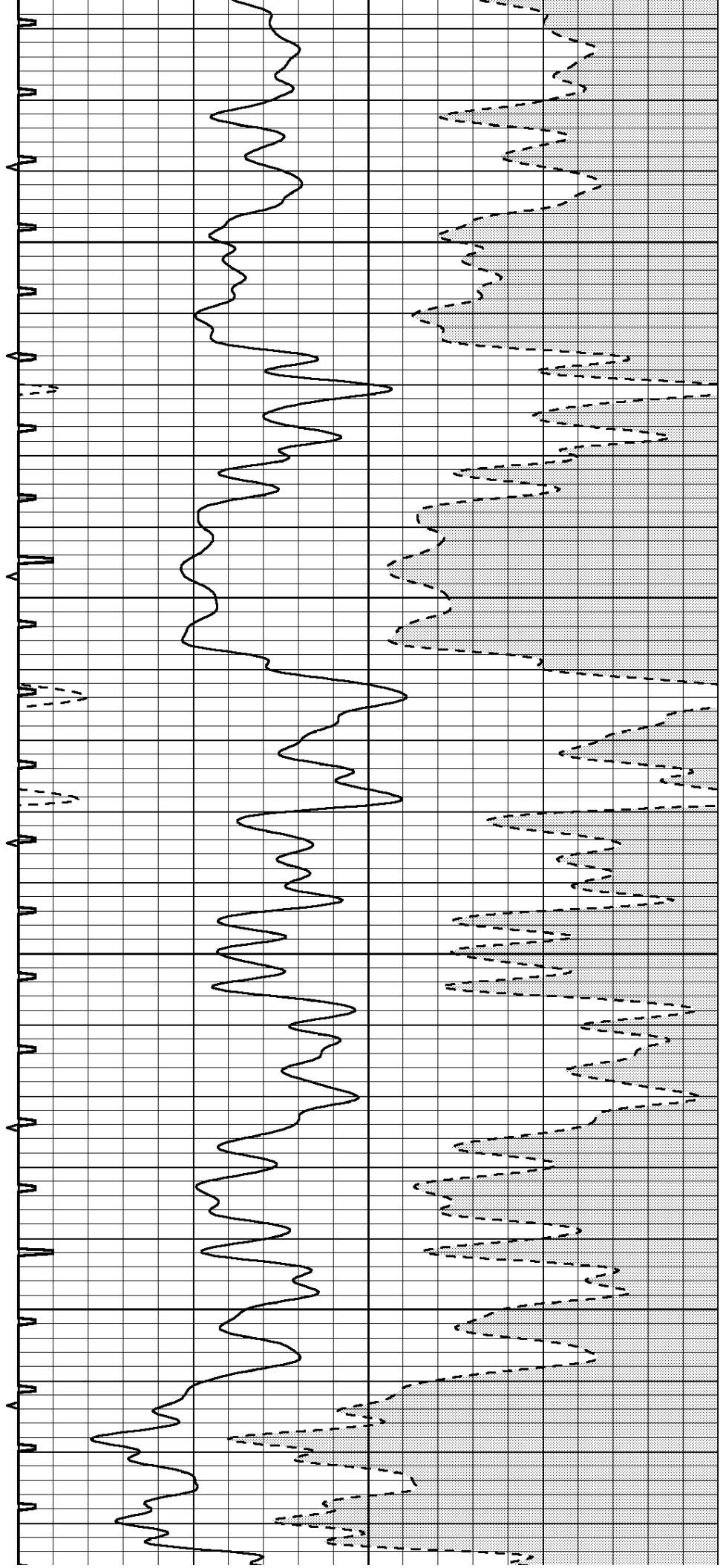


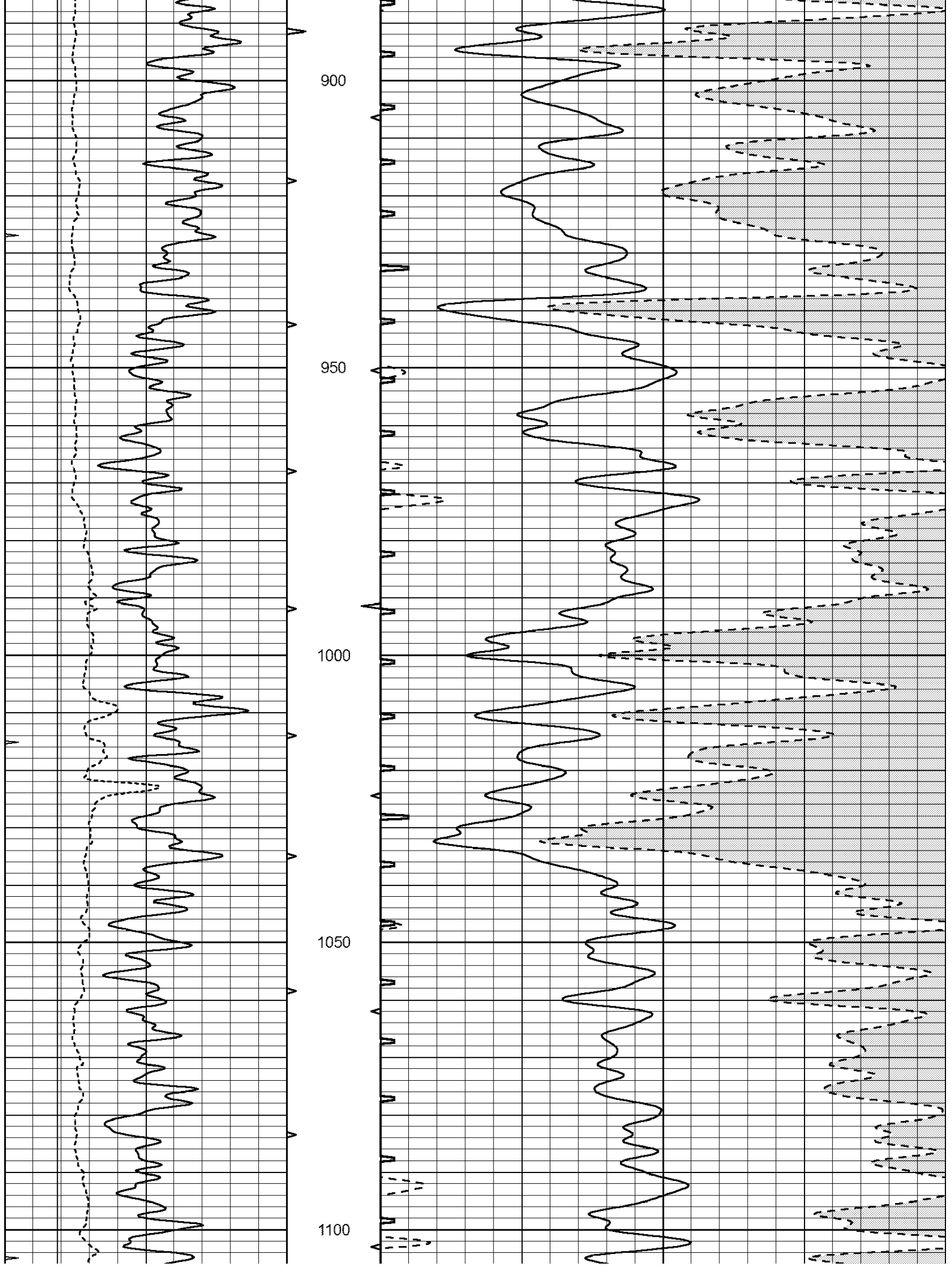
700

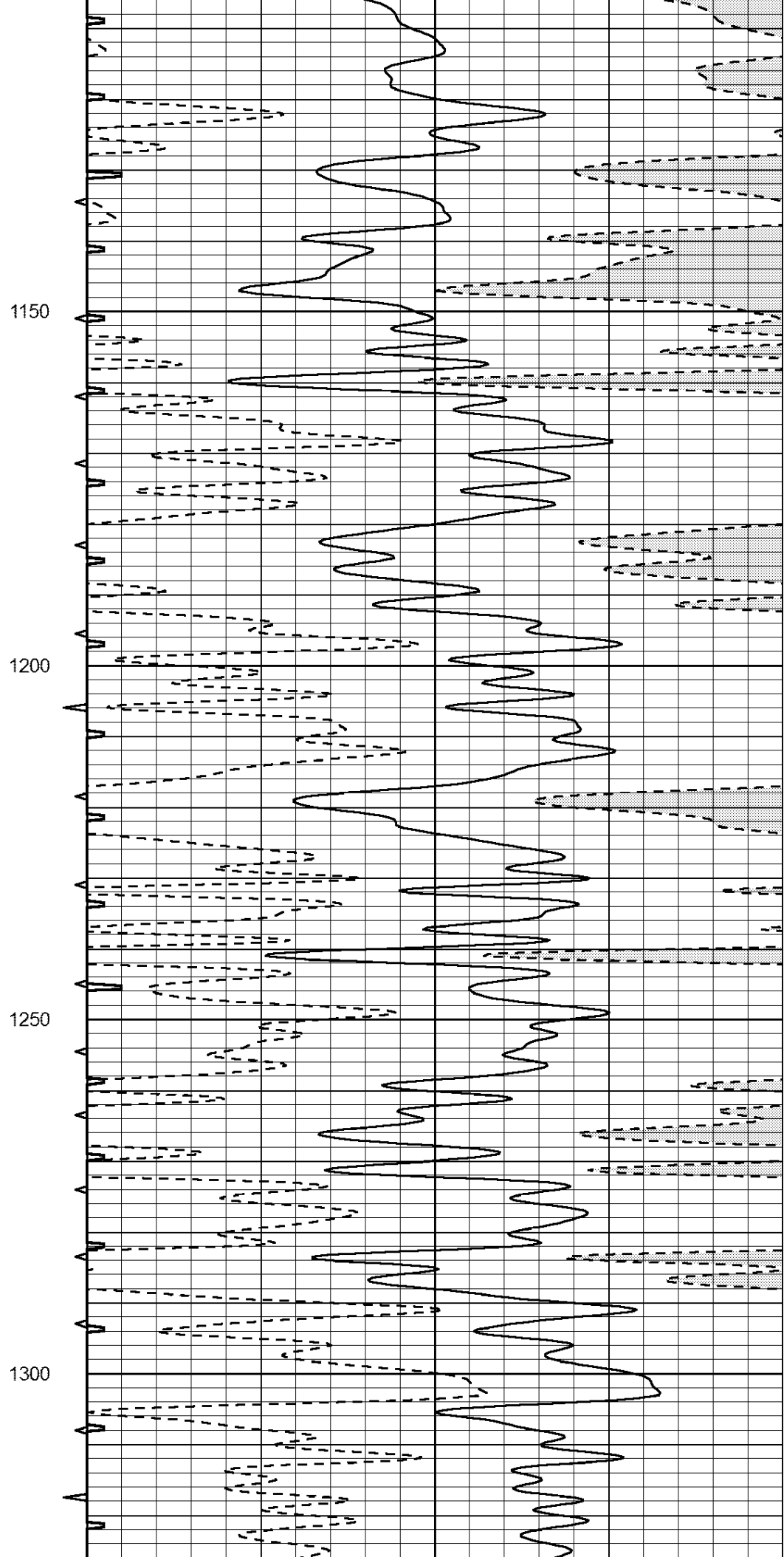
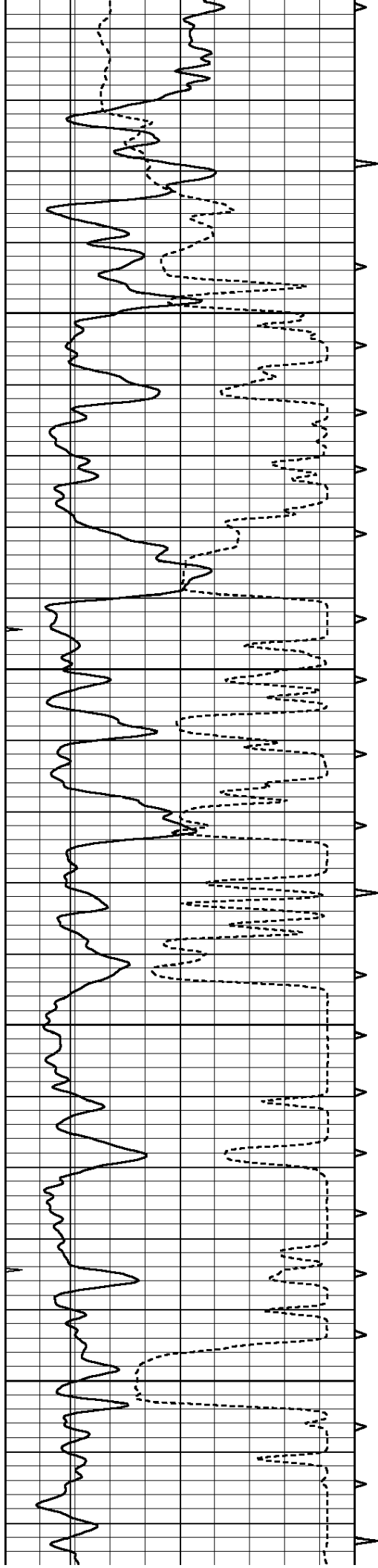
750

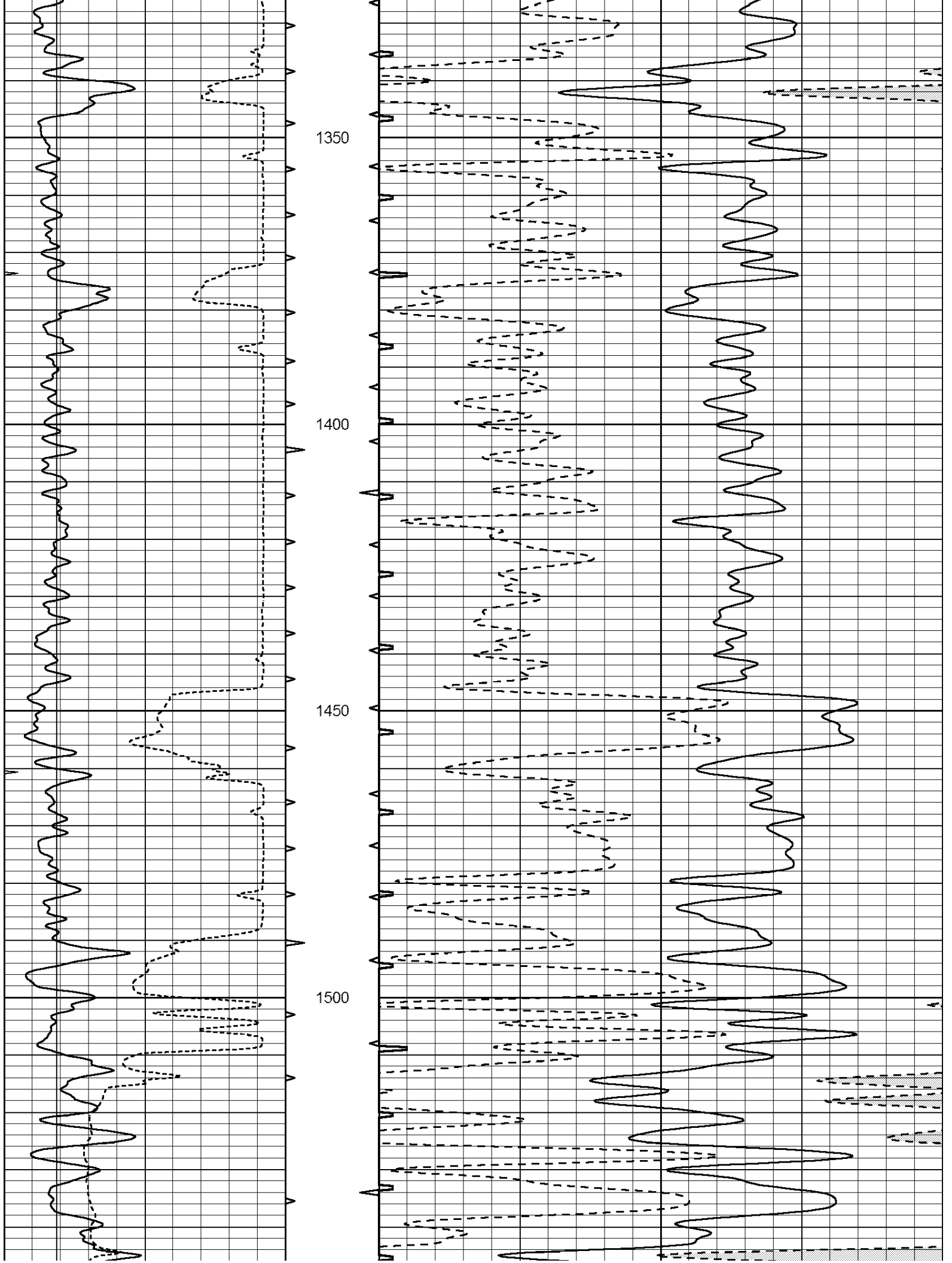
800

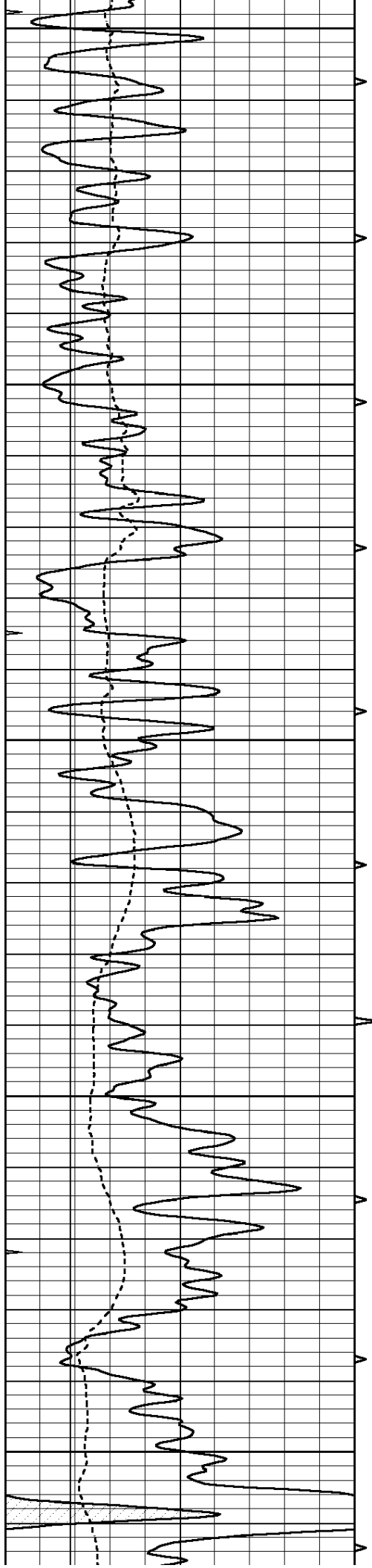
850











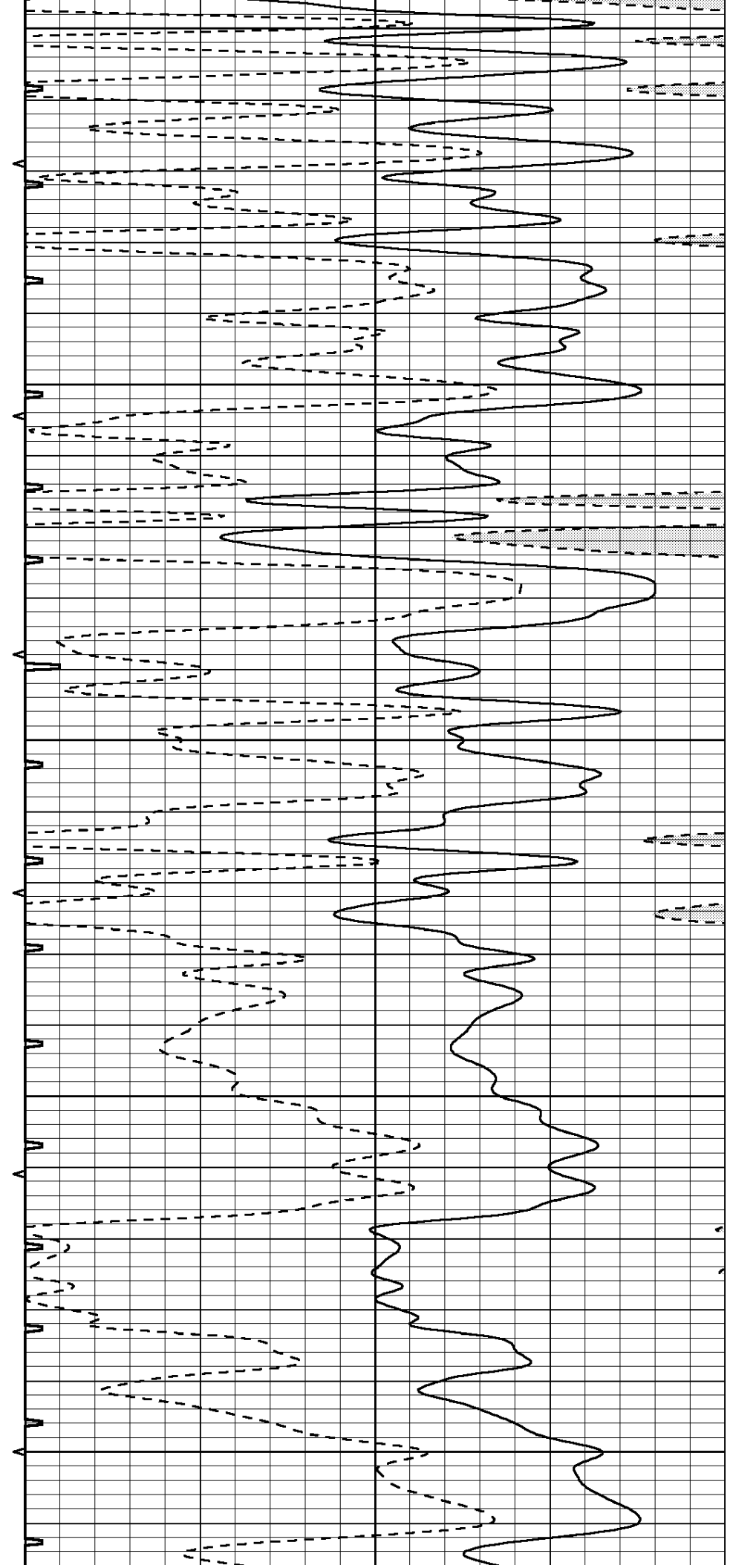
1550

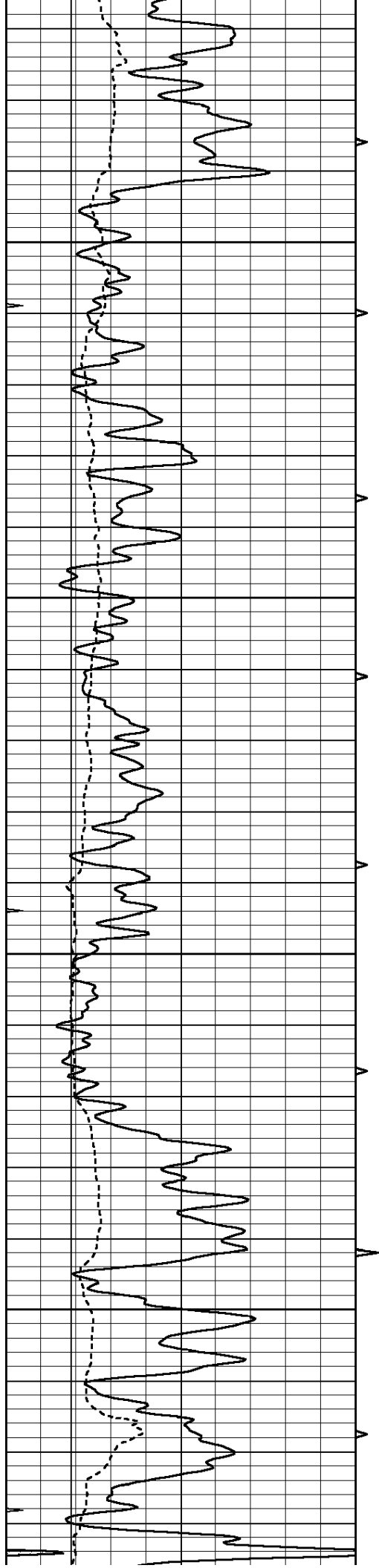
1600

1650

1700

1750



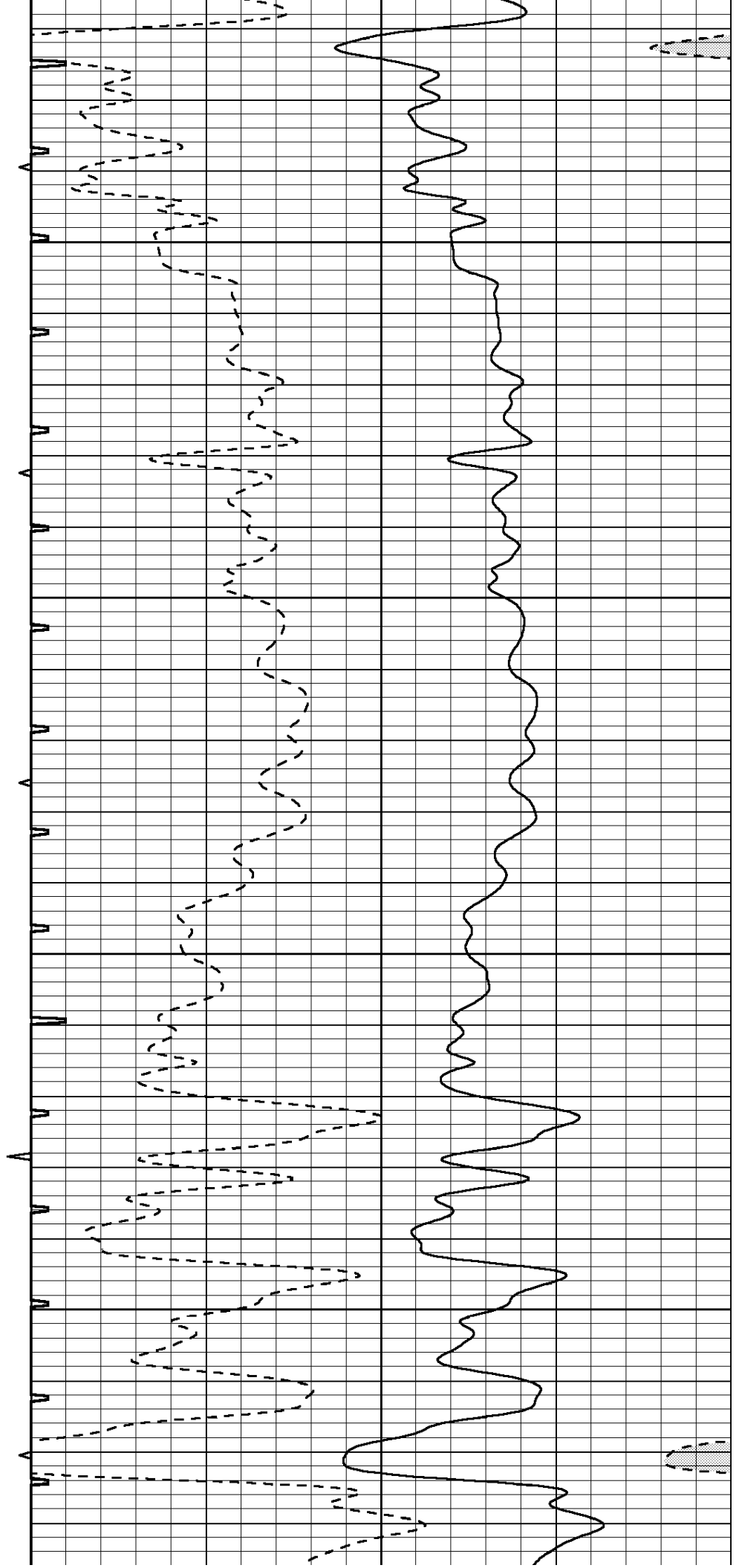


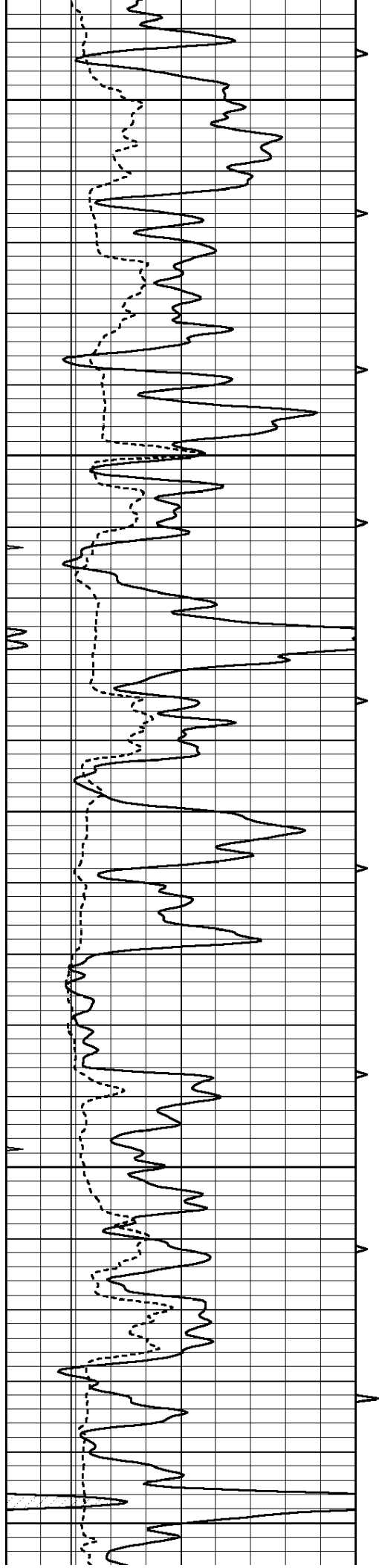
1800

1850

1900

1950





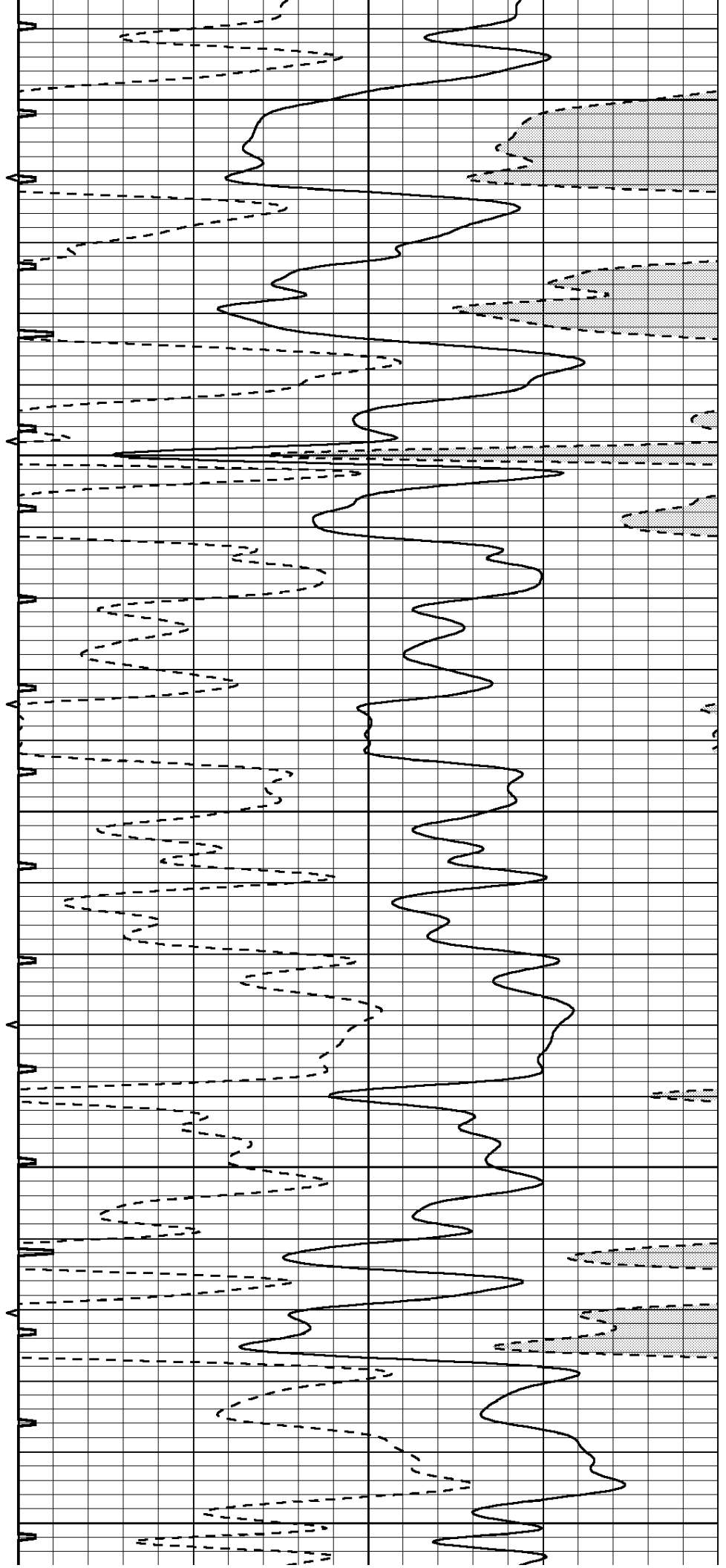
2000

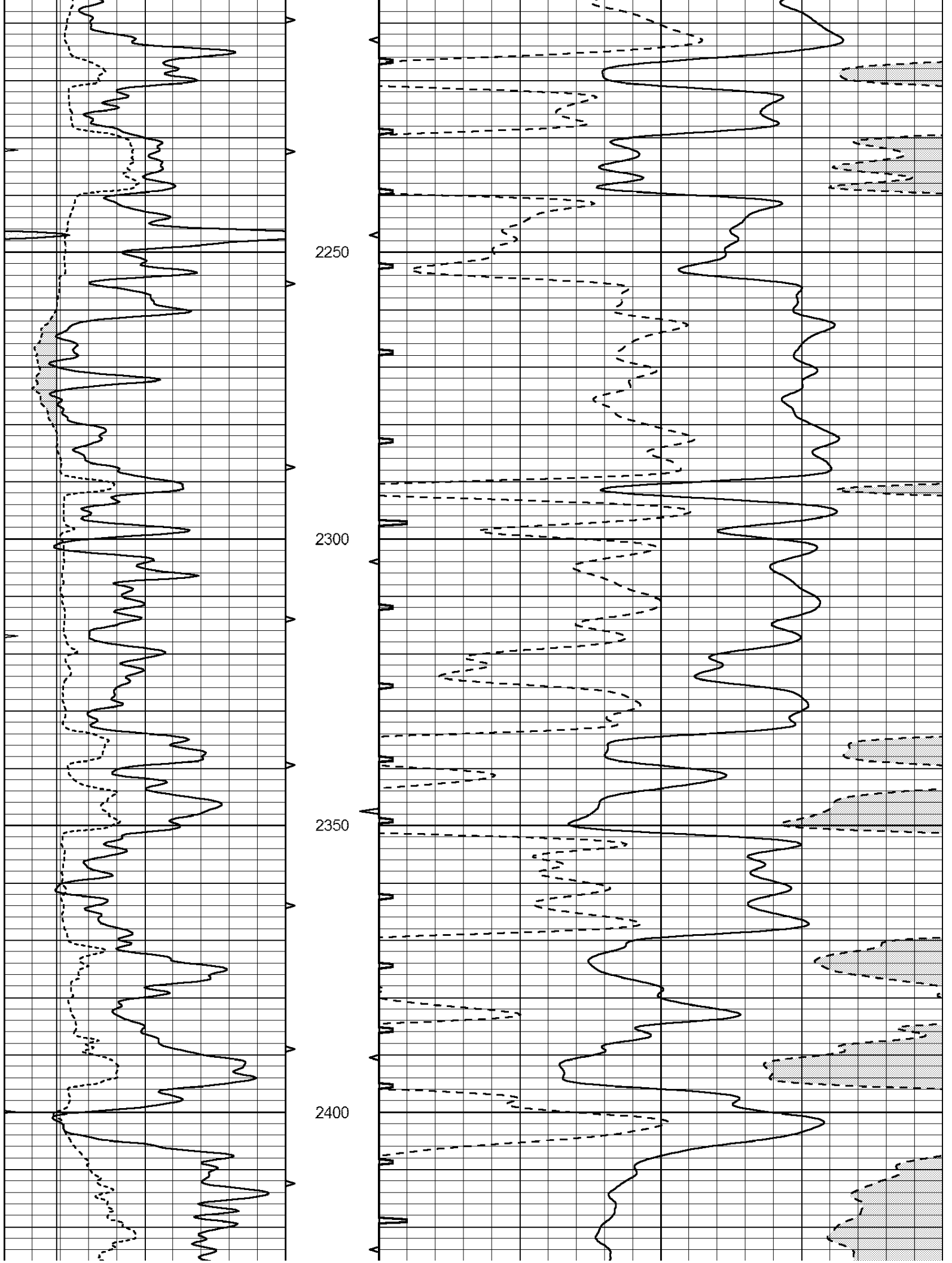
2050

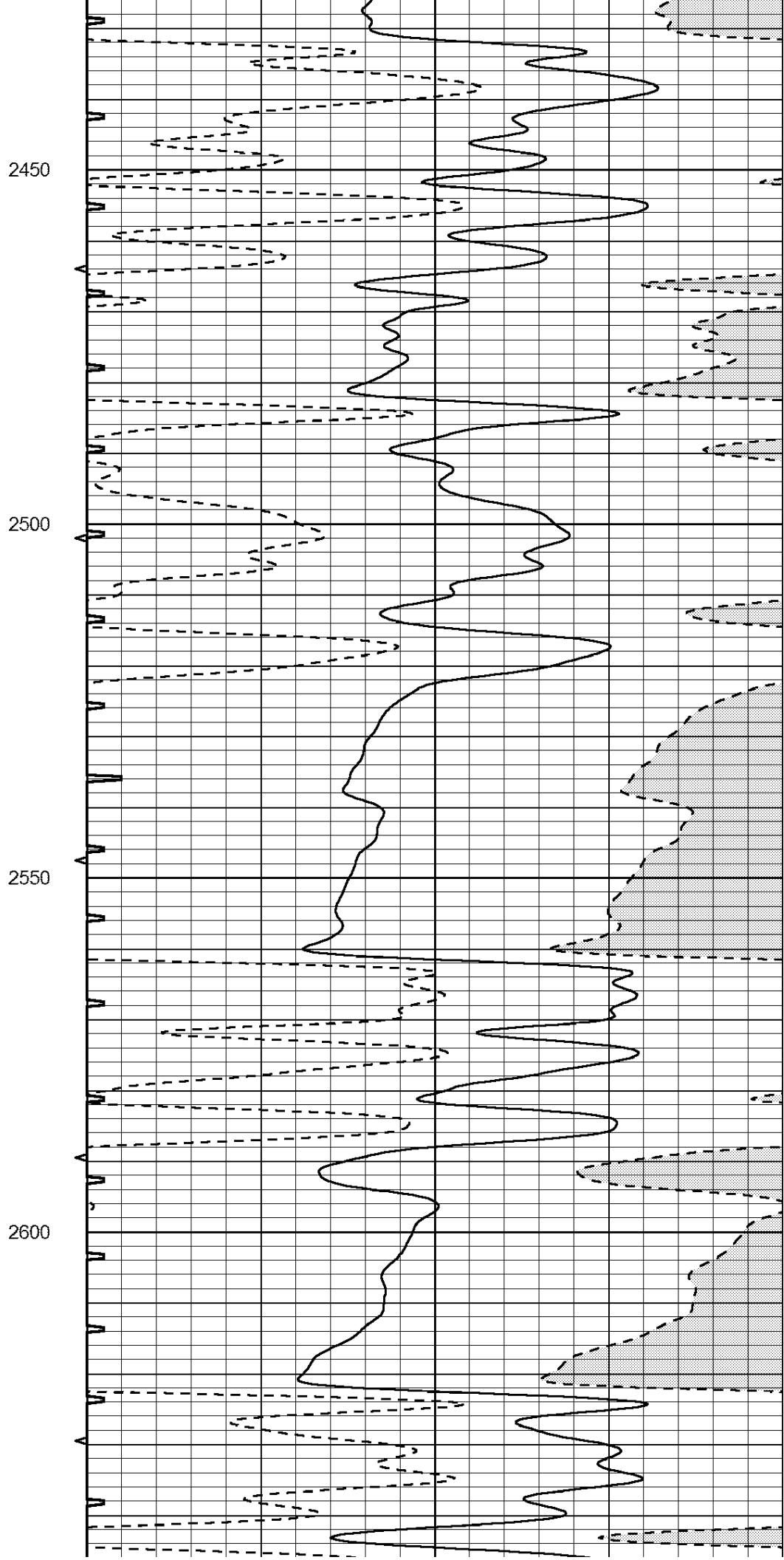
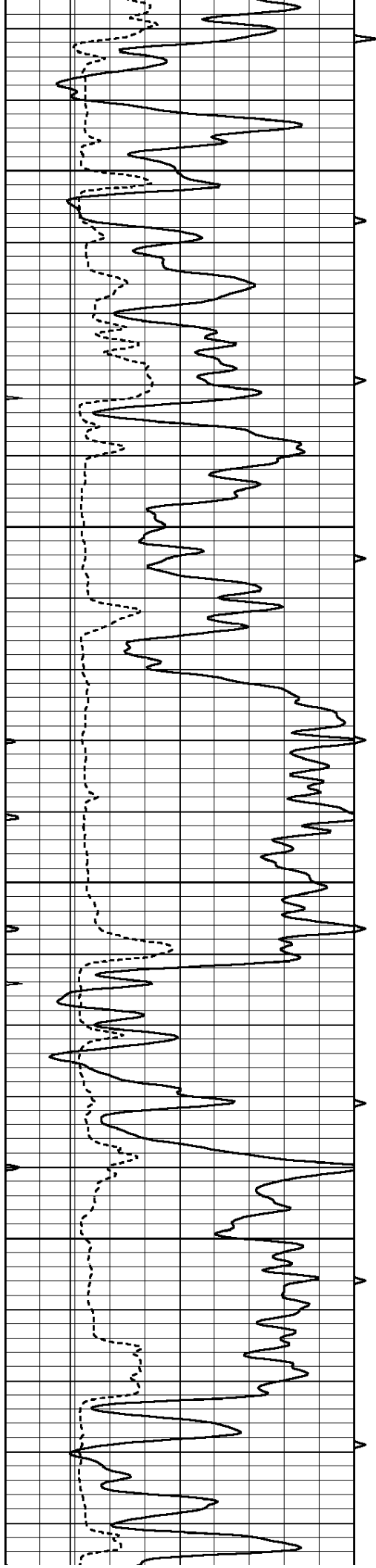
2100

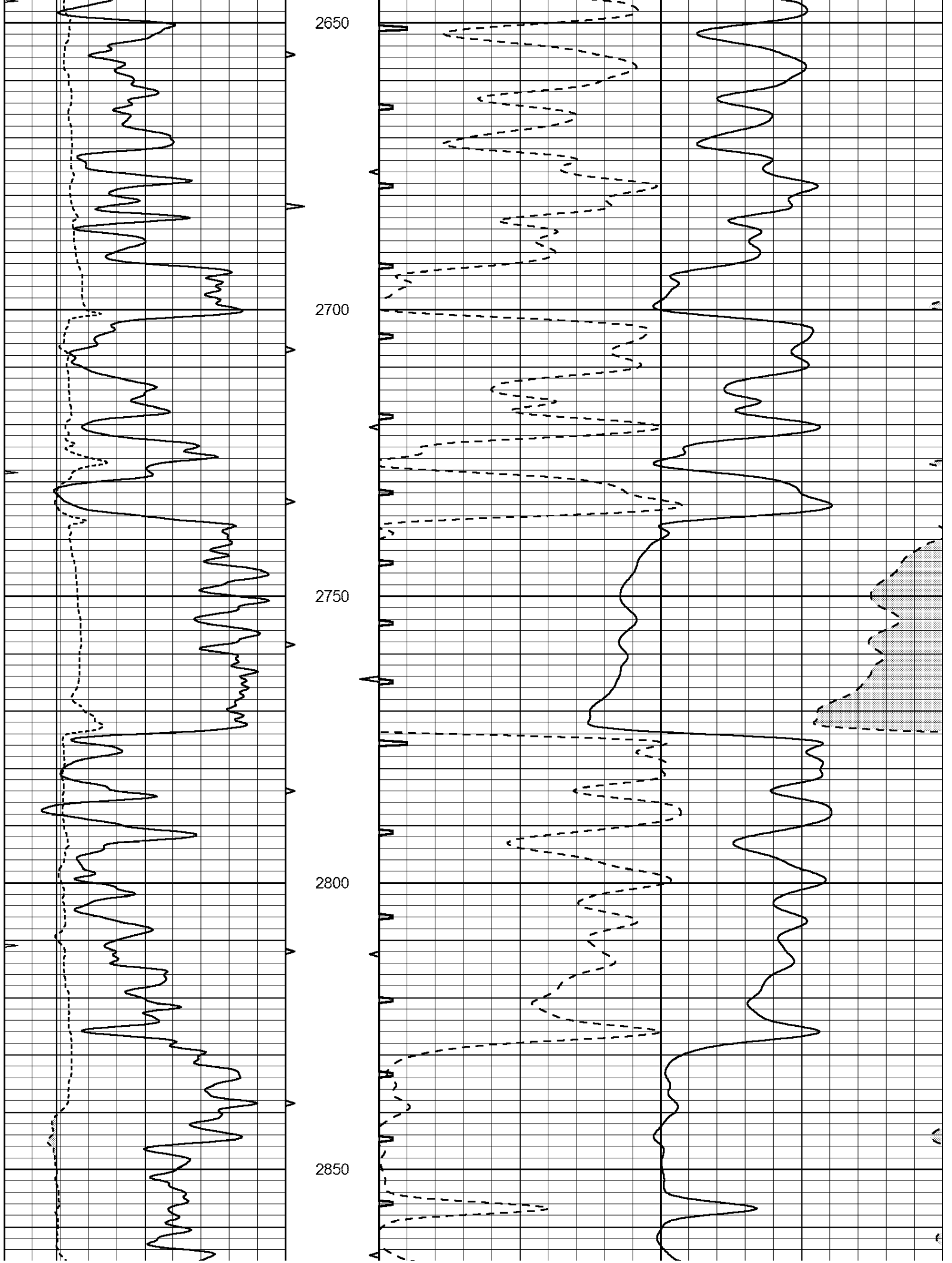
2150

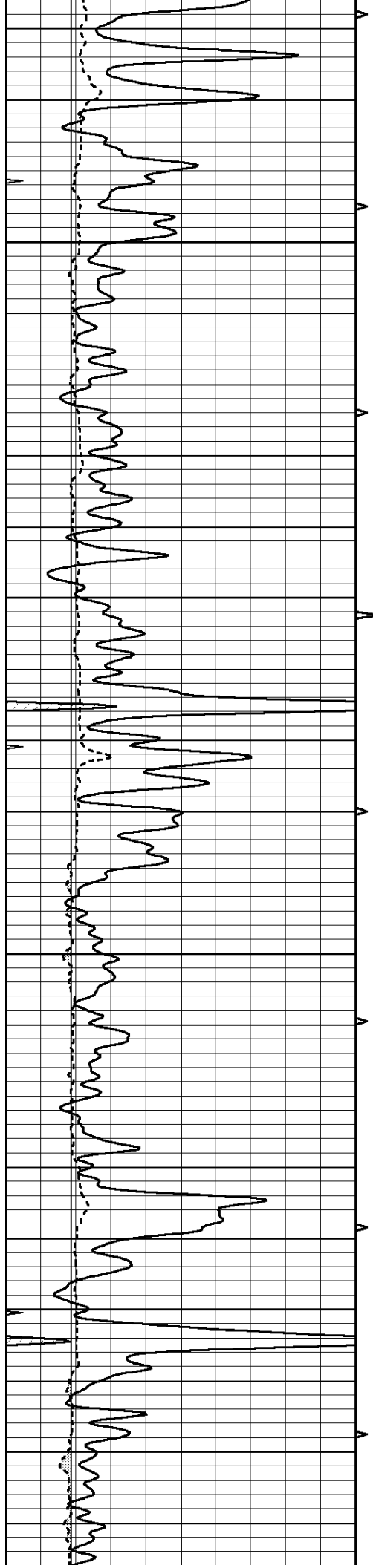
2200









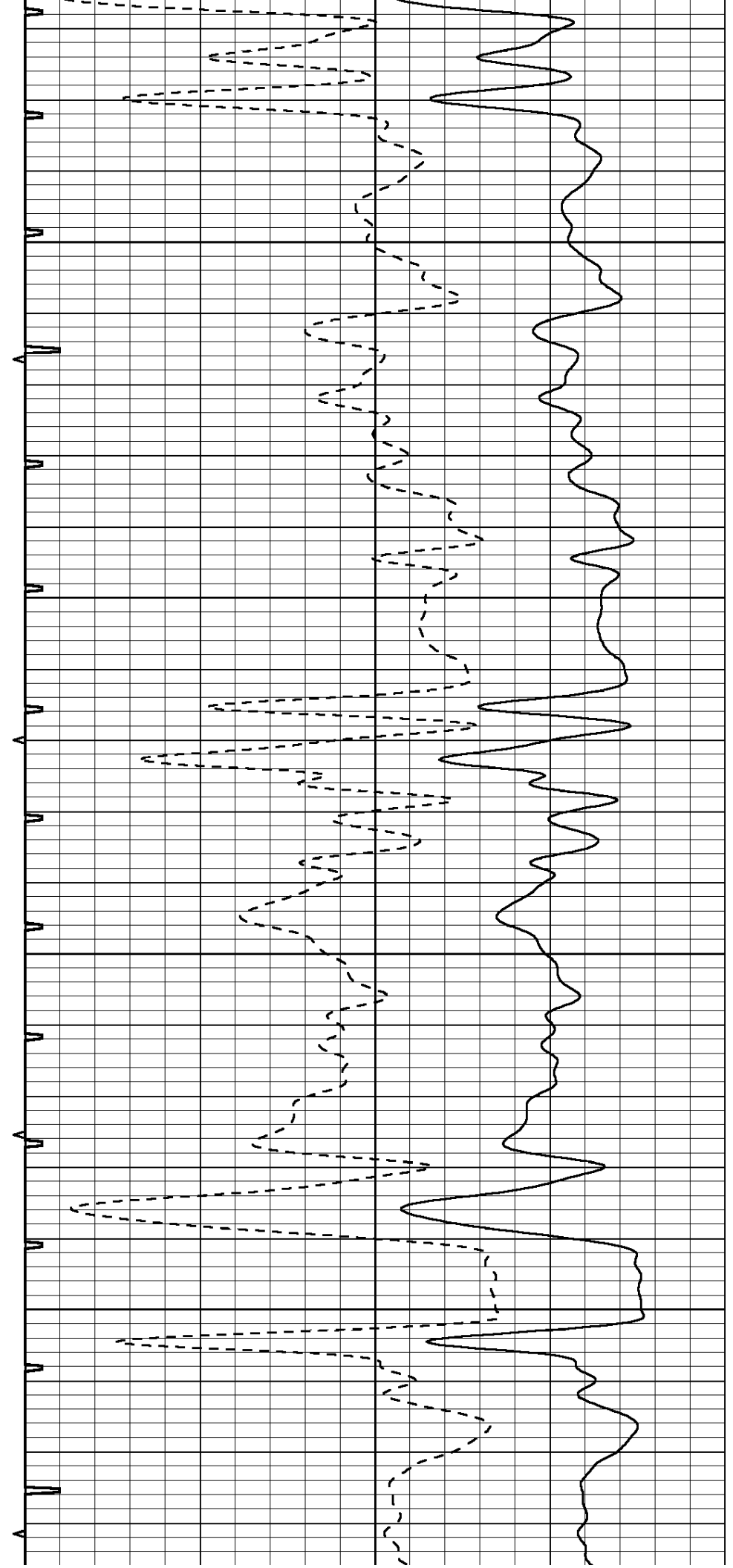


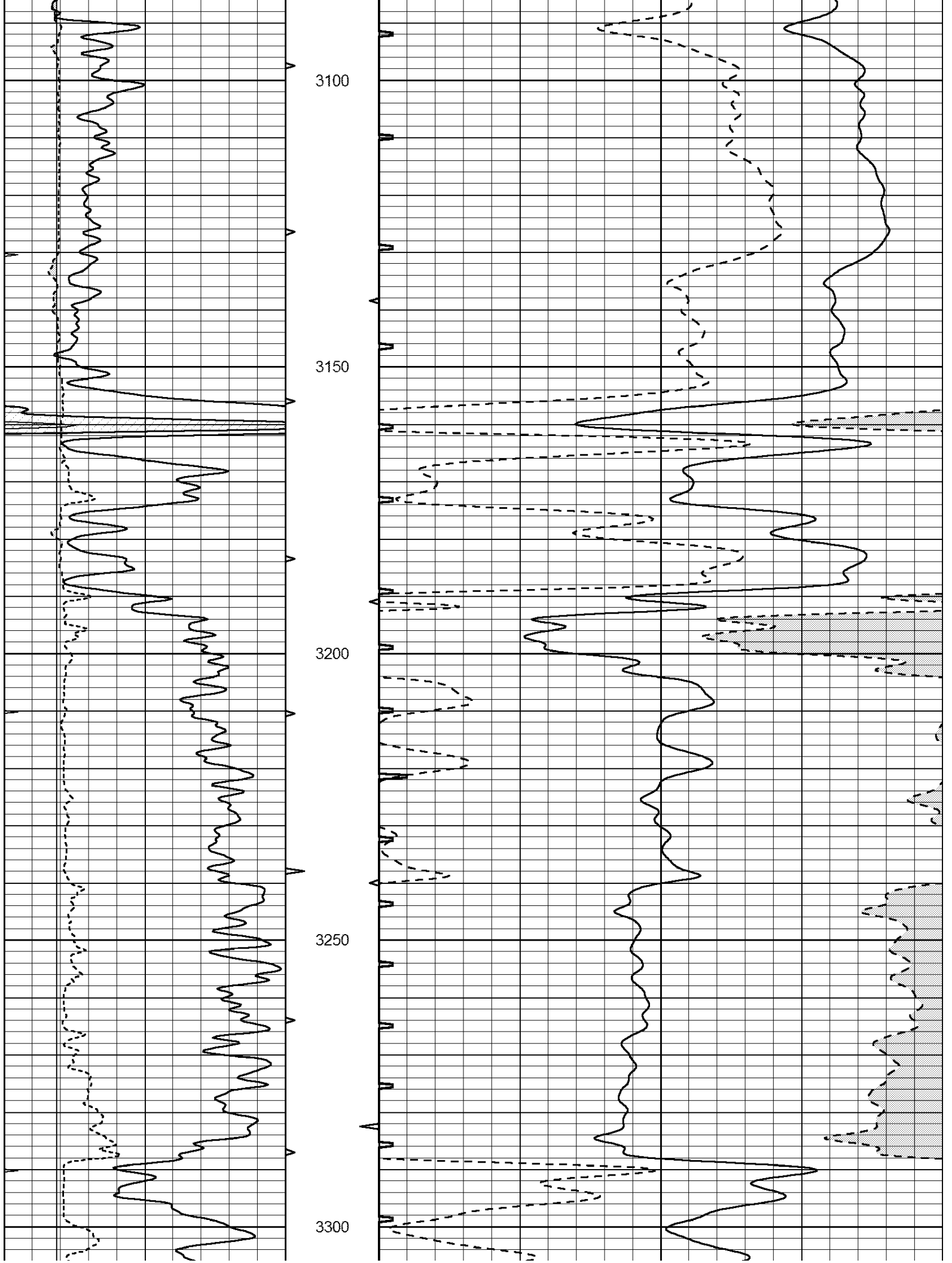
2900

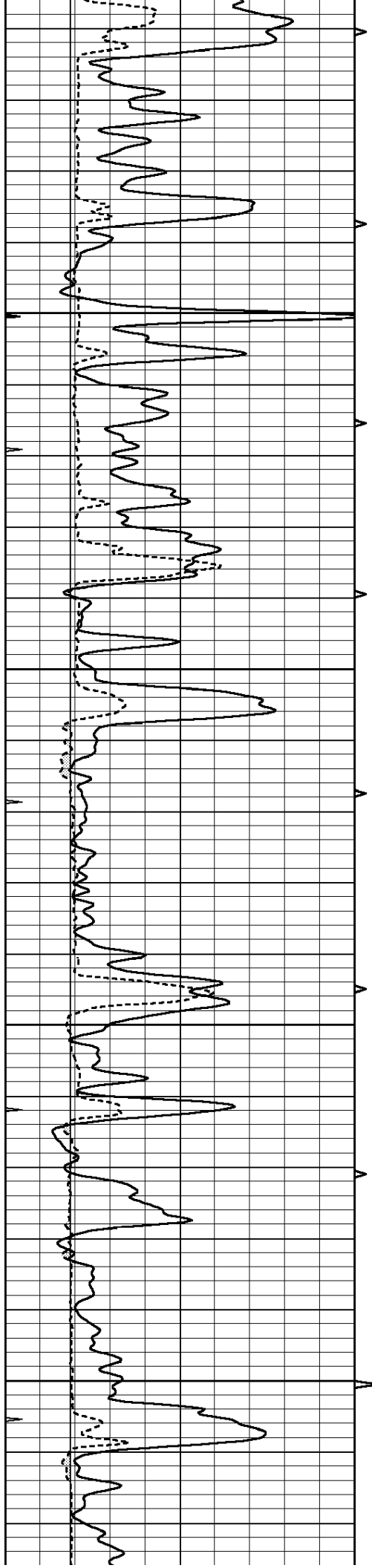
2950

3000

3050





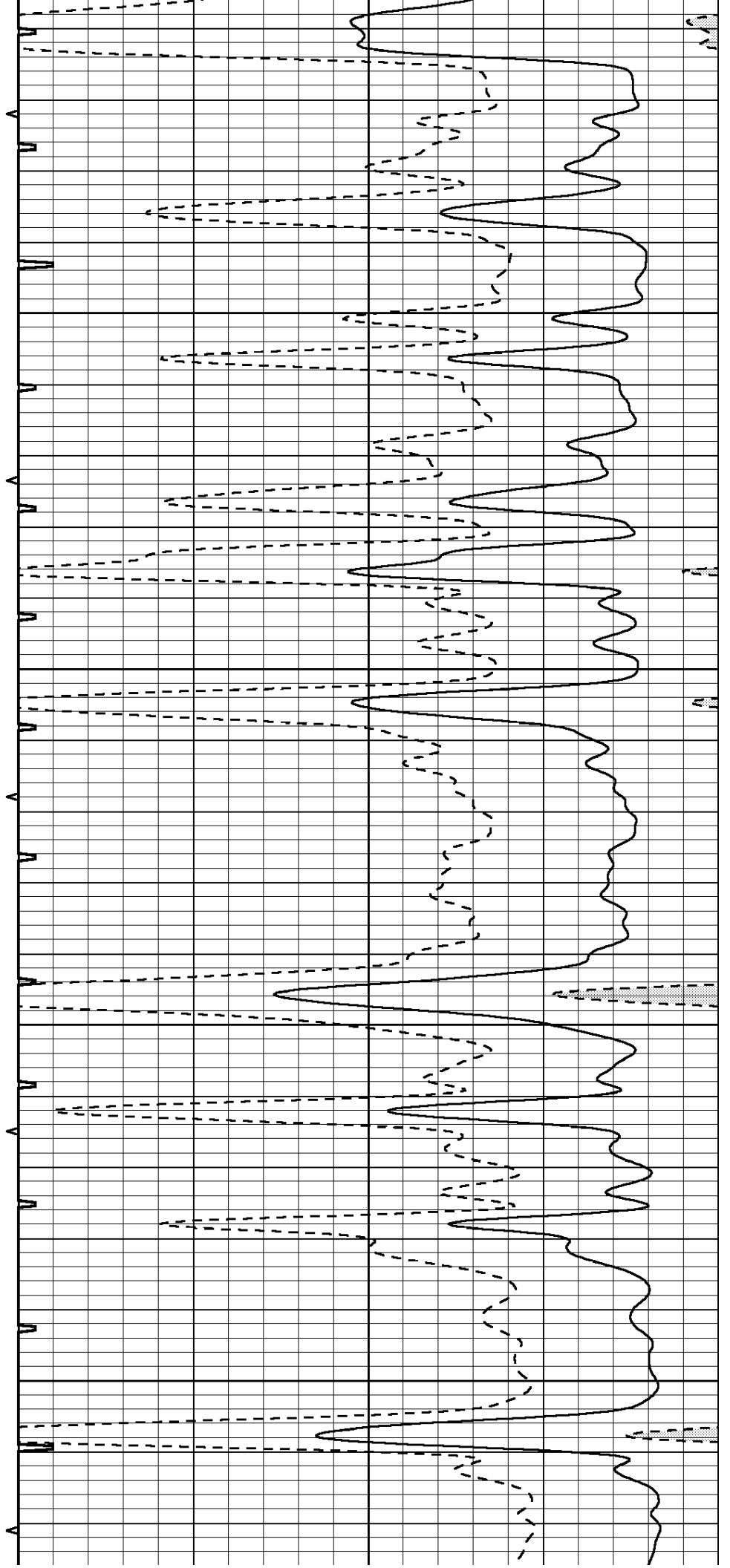


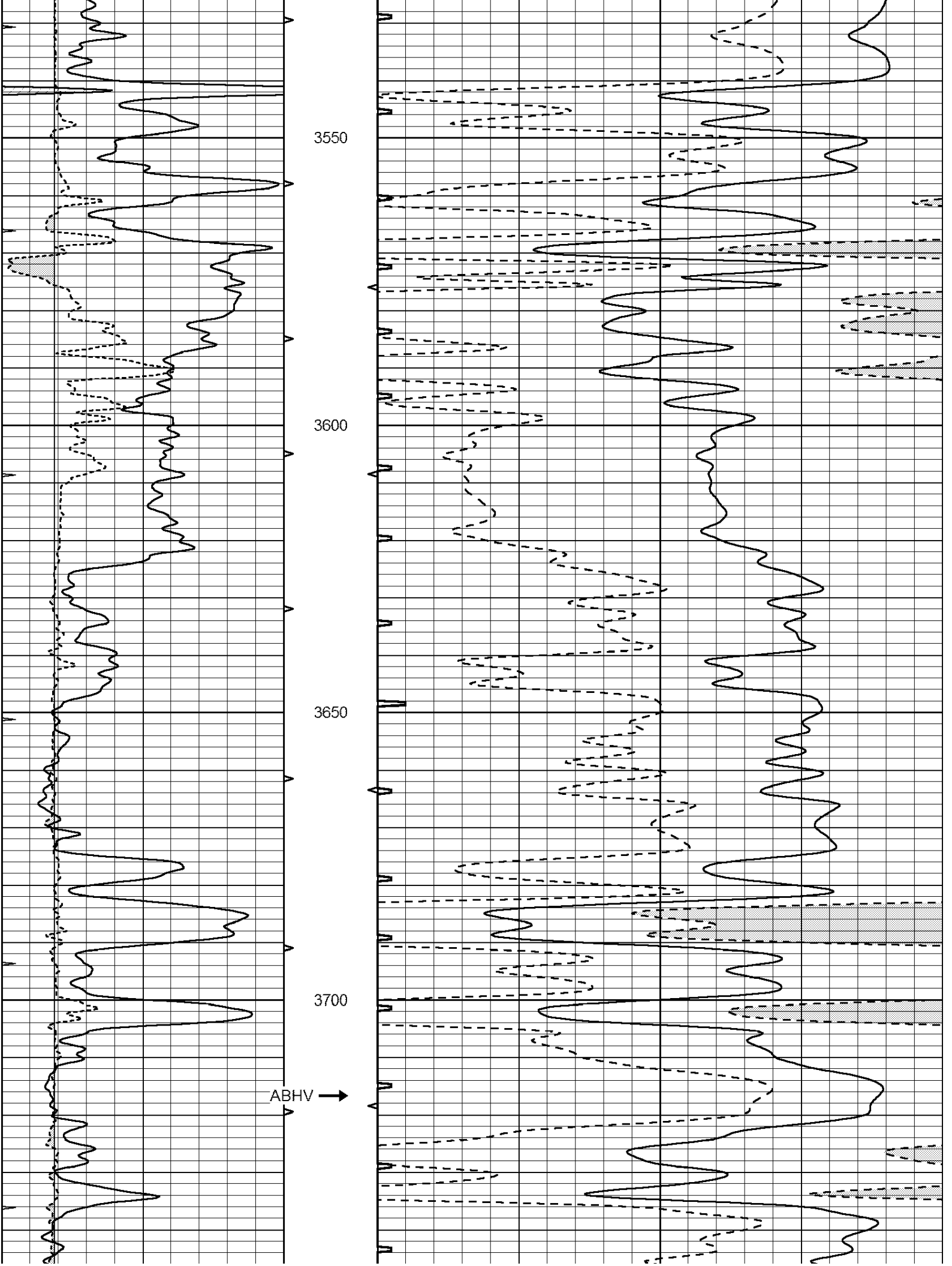
3350

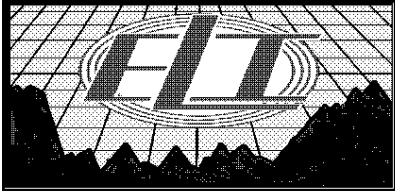
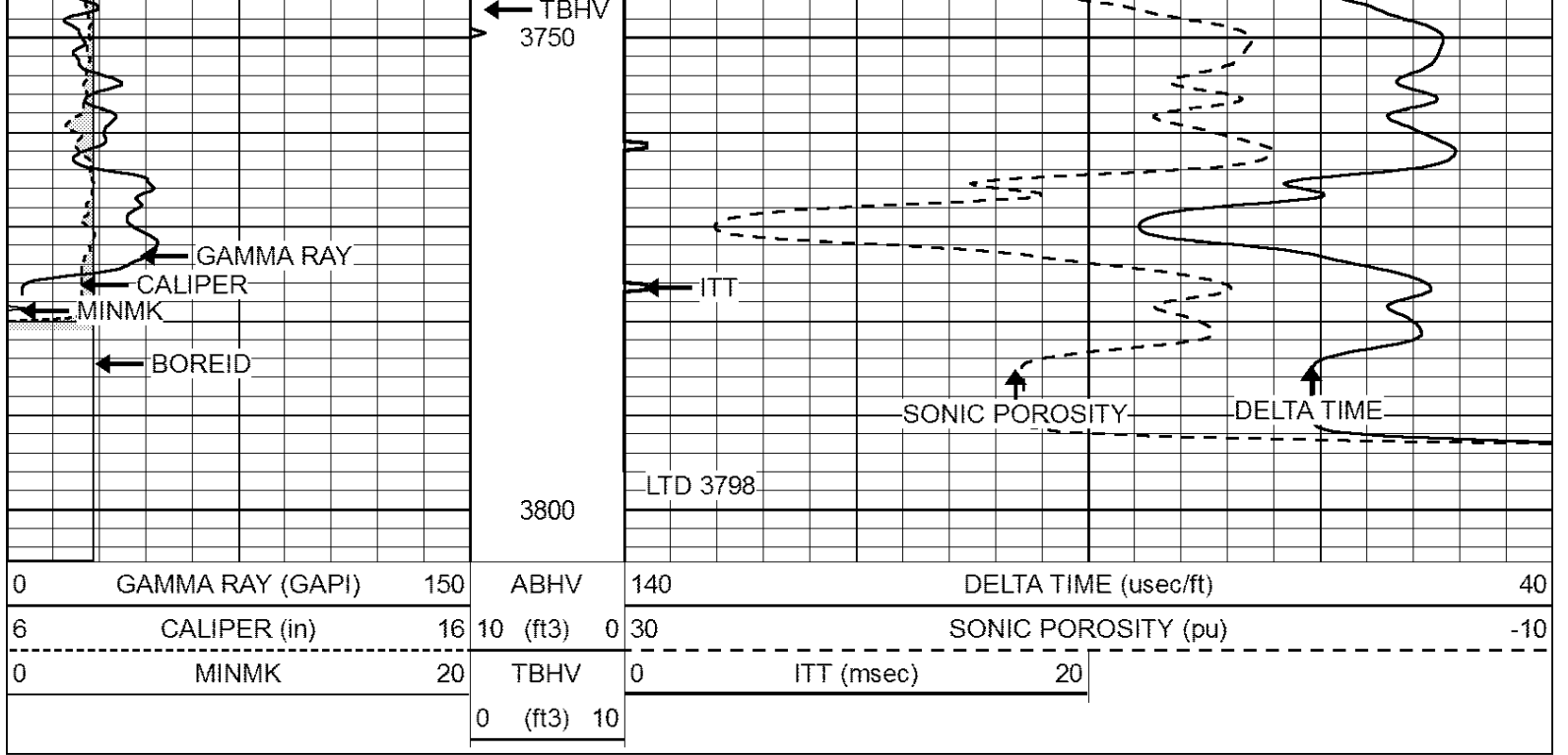
3400

3450

3500



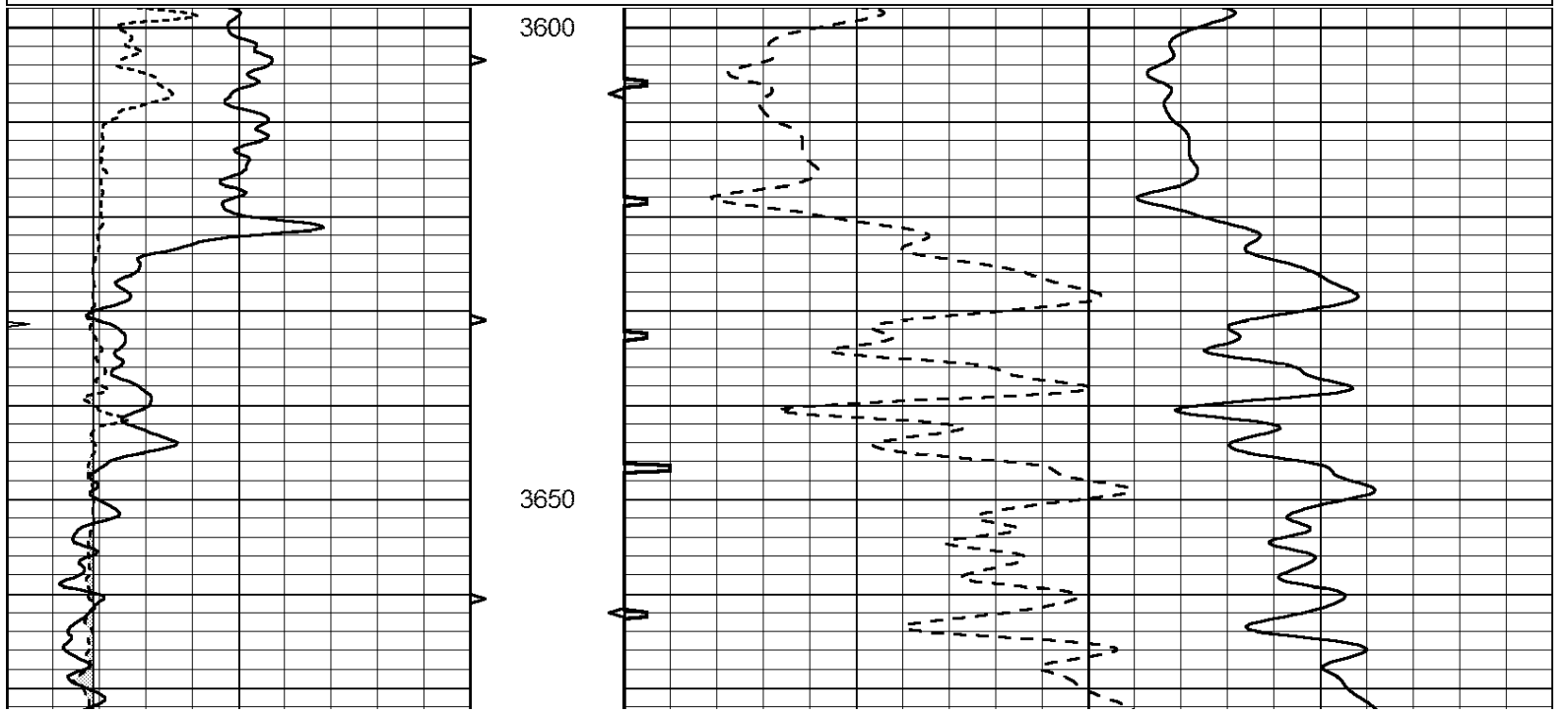


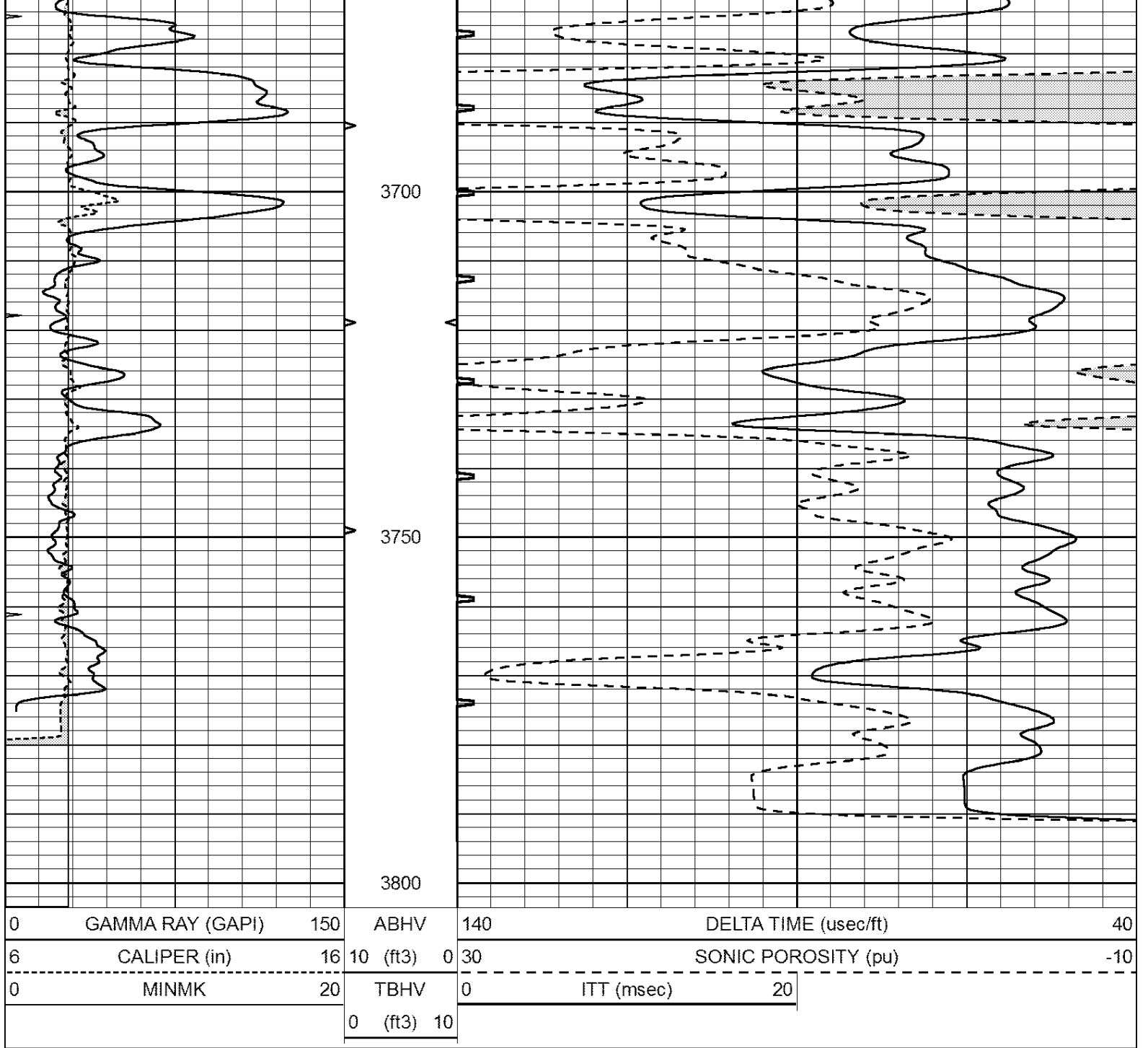


REPEAT SECTION

Database File: 2914pe.db
 Dataset Pathname: pass6RP
 Presentation Format: _slt
 Dataset Creation: Sat Sep 08 12:51:21 2018
 Charted by: Depth in Feet scaled 1:240

0	GAMMA RAY (GAPI)	150	ABHV	140	DELTA TIME (usec/ft)	40	
6	CALIPER (in)	16	10 (ft3)	0	30	SONIC POROSITY (pu)	-10
0	MINMK	20	TBHV	0	ITT (msec)	20	
			0 (ft3)	10			





Calibration Report

Database File: 2914pe.db
 Dataset Pathname: pass6RP
 Dataset Creation: Sat Sep 08 12:51:21 2018

MICRO Calibration Report

Serial Number: MICRO4
 Tool Model: PROBE
 Performed: Thu Jul 05 09:30:00 2018

Caliper Calibration: Gain=3.729 Offset=-17.125

References	Low Cal	High Cal
Readings	7.000	14.000
	6.470	8.348

1.5" Calibration: Gain=39.297 Offset=-0.175

References	Low Cal	High Cal
Readings	0.000	20.000
	0.013	1.517

2" Calibration:	Gain=51.168	Offset=-0.264
-----------------	-------------	---------------

	Low Cal	High Cal
References	0.000	20.000
Readings	0.015	1.180

Gamma Ray Calibration Report

Serial Number:	GR5
Tool Model:	OPEN
Performed:	Mon Jul 02 20:05:37 2018

Calibrator Value:	1.0	GAPI
-------------------	-----	------

Background Reading:	0.0	cps
Calibrator Reading:	1.0	cps

Sensitivity:	0.9100	GAPI/cps
--------------	--------	----------