

Log Variables

DatabaseC:\ProgramData\Warrior\Data\cholla_patterson#3_12swd_cblgn.db
Dataset field/well/run1/pass3/_vars_

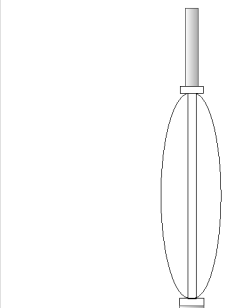
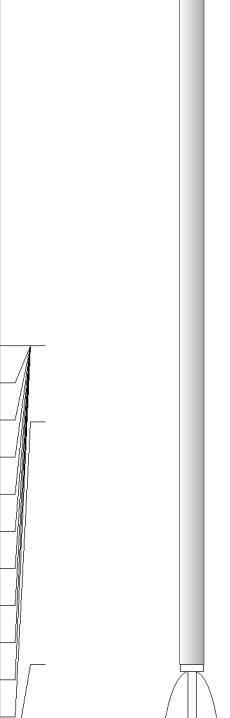
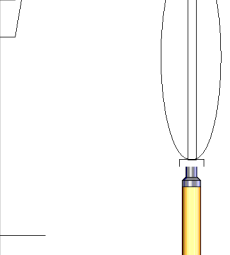
Top - Bottom

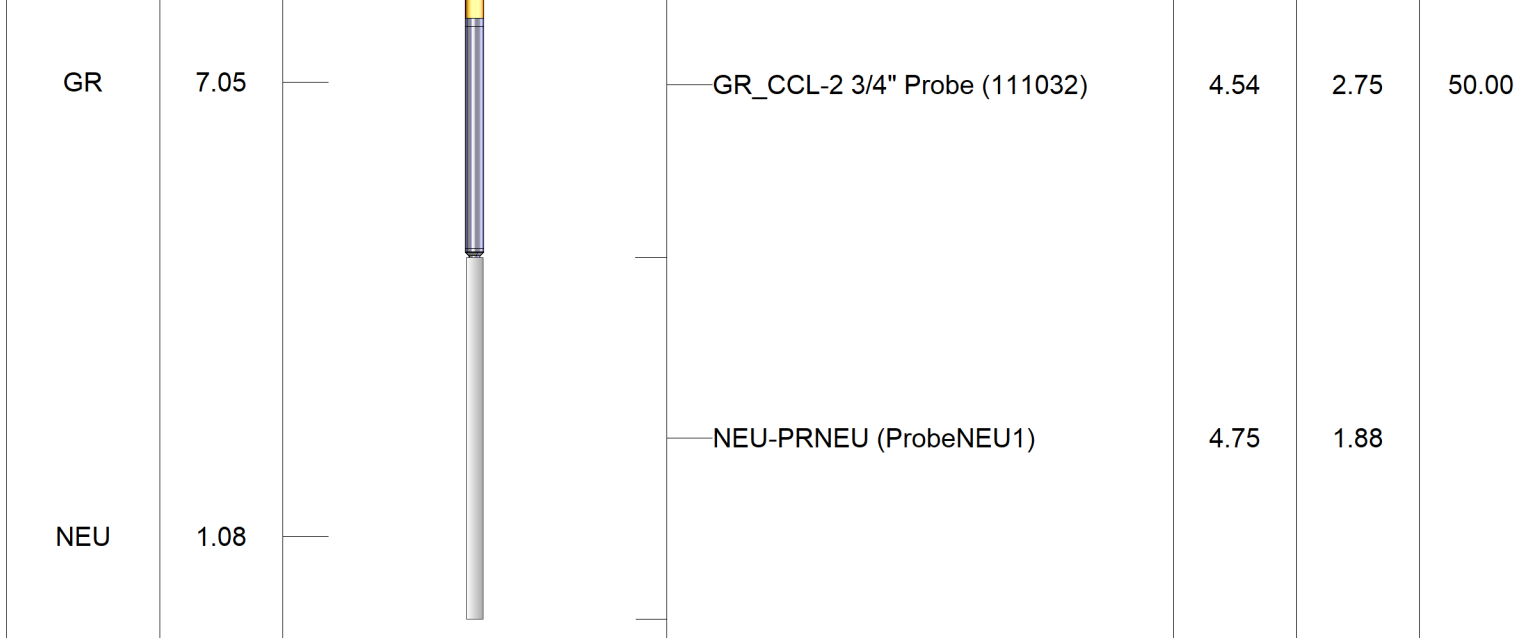
BOREID in 7.875	BOTTEMP degF 100	CASEOD in 4.5	CASETHCK in 0.27	CASEWGHT lb/ft 11.5	MAXAMPL mV 0	MINAMPL mV 1
MINATTN db/ft 0.08	NPORSEL Limestone	NPORSHIFT 0	PERFS 0	PPT usec 0	SRFTEMP degF 70	TDEPTH ft 1604

Variable Description

BOREID : Borehole I.D.
BOTTEMP : Bottom Hole Temperature
CASEOD : Casing O.D.
CASETHCK : Casing Thickness
CASEWGHT : Casing Weight
MAXAMPL : Maximum Amplitude
MINAMPL : Minimum Amplitude

MINATTN : Minimum Attenuation
NPORSEL : Neutron Porosity Curve Select
NPORSHIFT : NPORSHIFT
PERFS : Perforation Flag
PPT : Predicted Pipe Time
SRFTEMP : Surface Temperature
TDEPTH : Total Depth

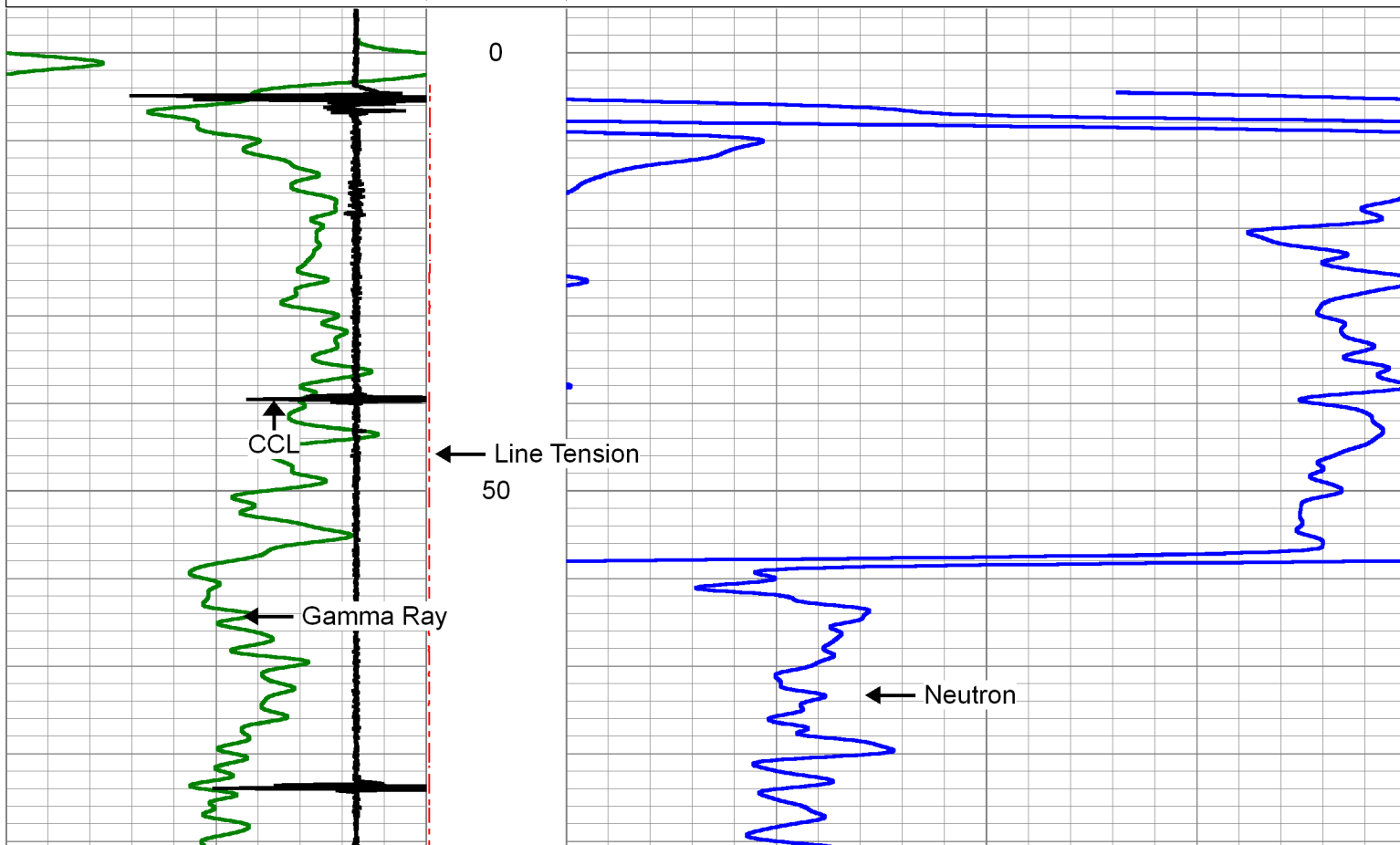
Sensor	Offset (ft)	Schematic	Description	Length (ft)	O.D. (in)	Weight (lb)
			Cable Head-Titan_144 1 7/16" Titan Cable Head	1.03	1.44	2.00
			Centralizer-275 Probe 2 3/4" Probe Adjustable Spring Centralizer	2.88	2.75	15.00
			PROBE-RBT-DIGITAL-RBL-D (080554) Probe 2 3/4" Radii Bond-Digital	8.75	2.75	100.00
WVFS8	16.36					
WVFS7	16.36					
WVFS6	16.36					
WVFS5	16.36					
WVFS4	16.36					
WVFS3	16.36					
WVFS2	16.36					
WVFS1	16.36					
WVFCAL	16.36					
WVF3FT	16.36					
WVF5FT	15.36					
HEADVOLT	12.17		Centralizer-275 Probe 2 3/4" Probe Adjustable Spring Centralizer	2.88	2.75	15.00
CCL	8.39					

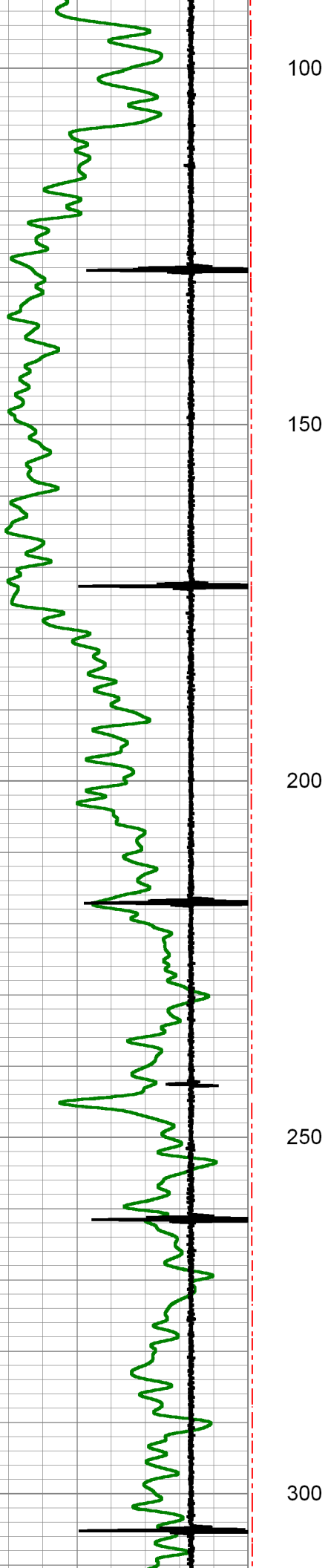


Dataset: cholla_patterson#3_12swd_cblgn.db: field/well/run1/pass3
 Total length: 24.83 ft
 Total weight: 182.00 lb
 O.D.: 2.75 in

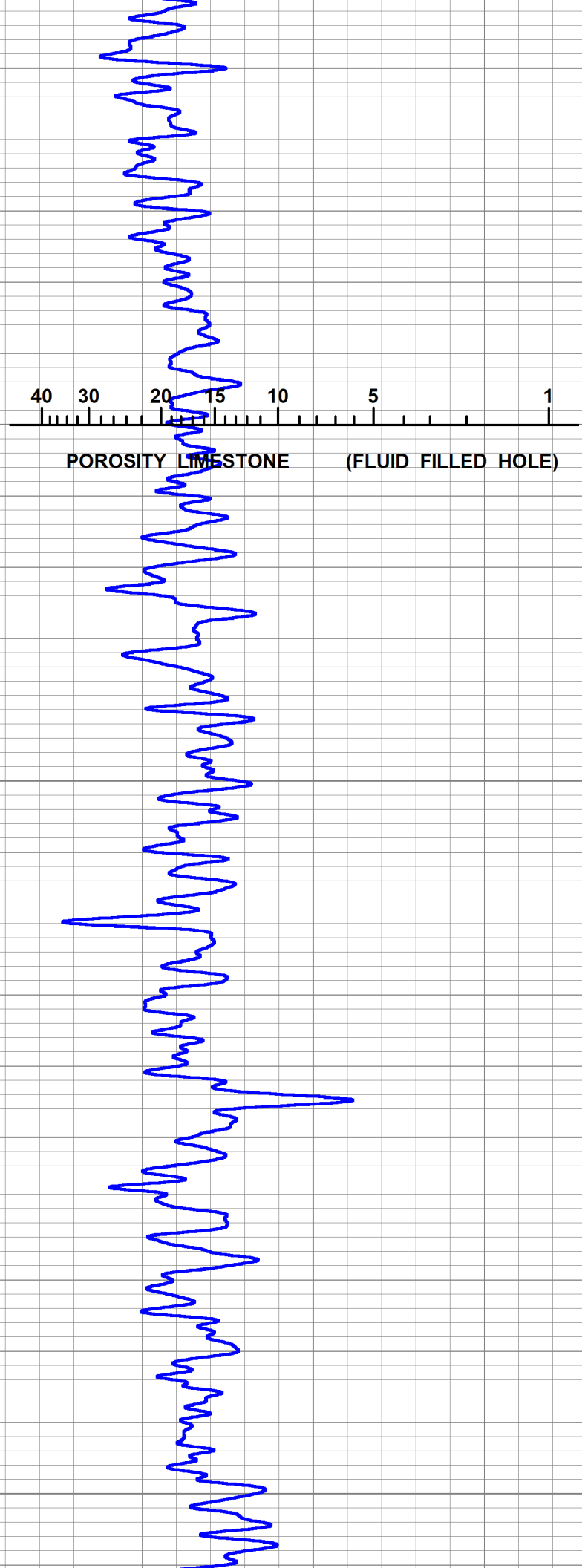
Database File cholla_patterson#3_12swd_cblgn.db
 Dataset Pathname pass3
 Presentation Format pinr_gr-n-ccl
 Dataset Creation Thu Jul 18 11:52:21 2019
 Charted by Depth in Feet scaled 1:240

0	GR	150	LTEN	35	NEU (NAPI)	120
-5	CCL	1	(lb)			
			0 2000			

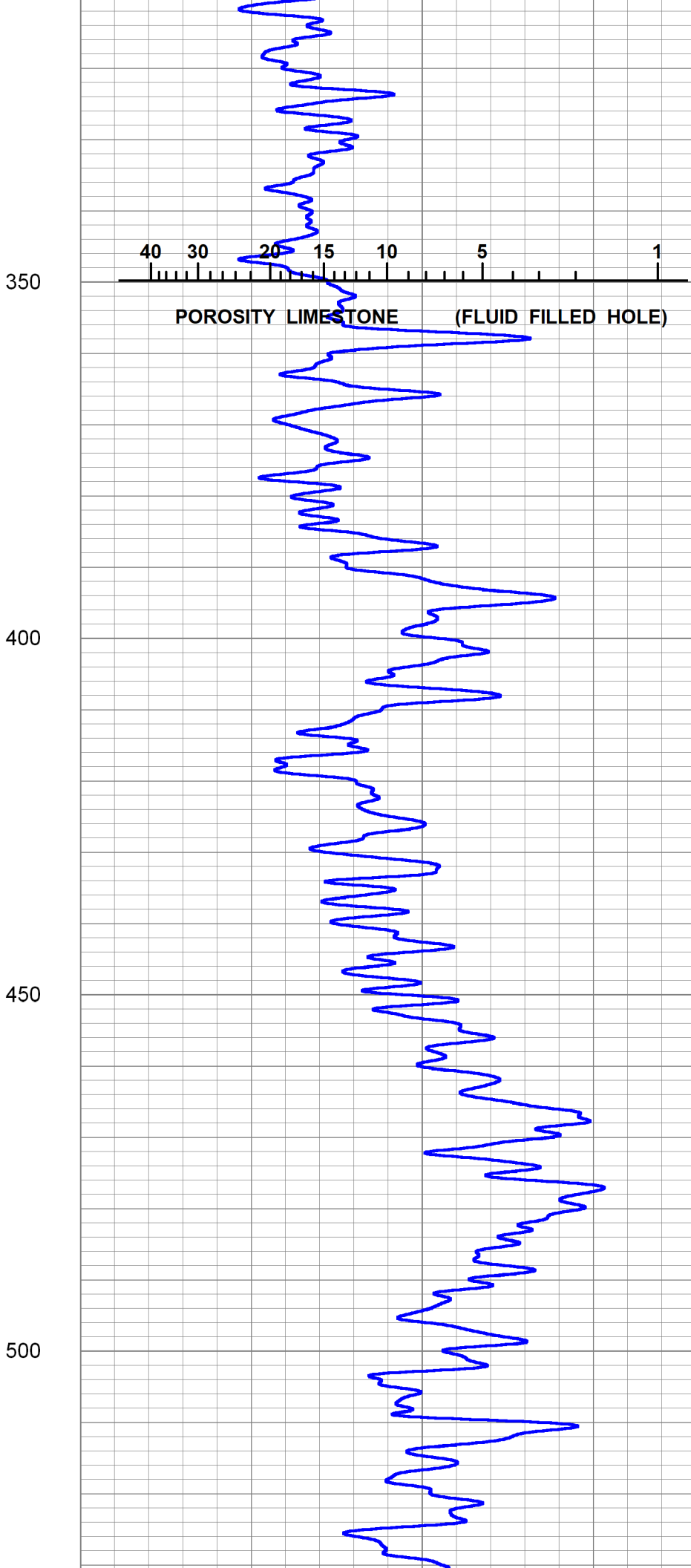
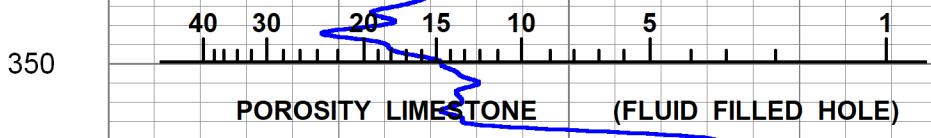
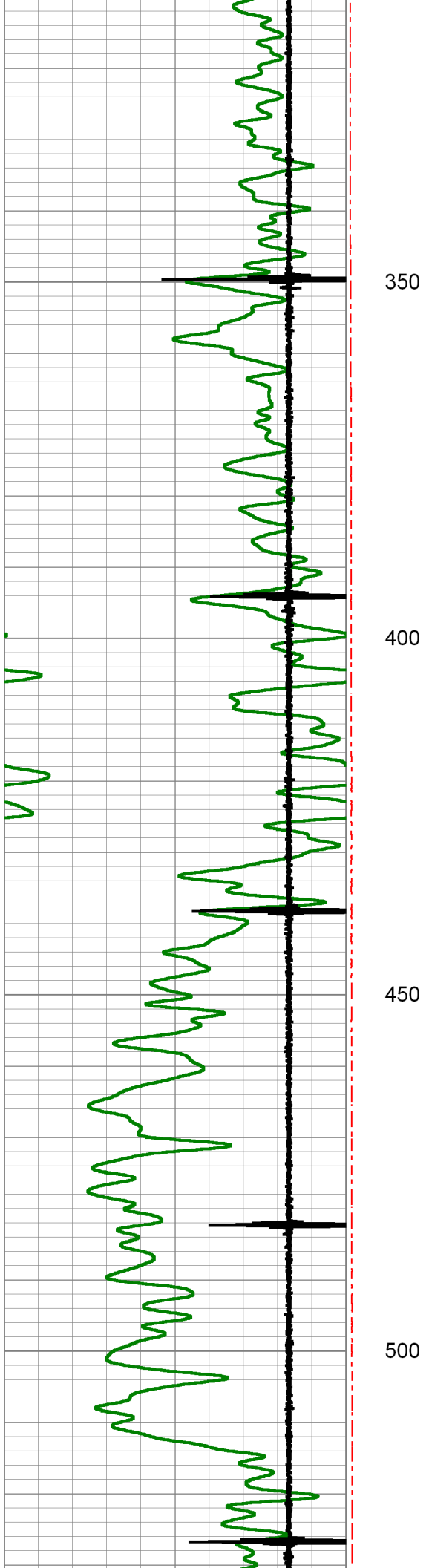


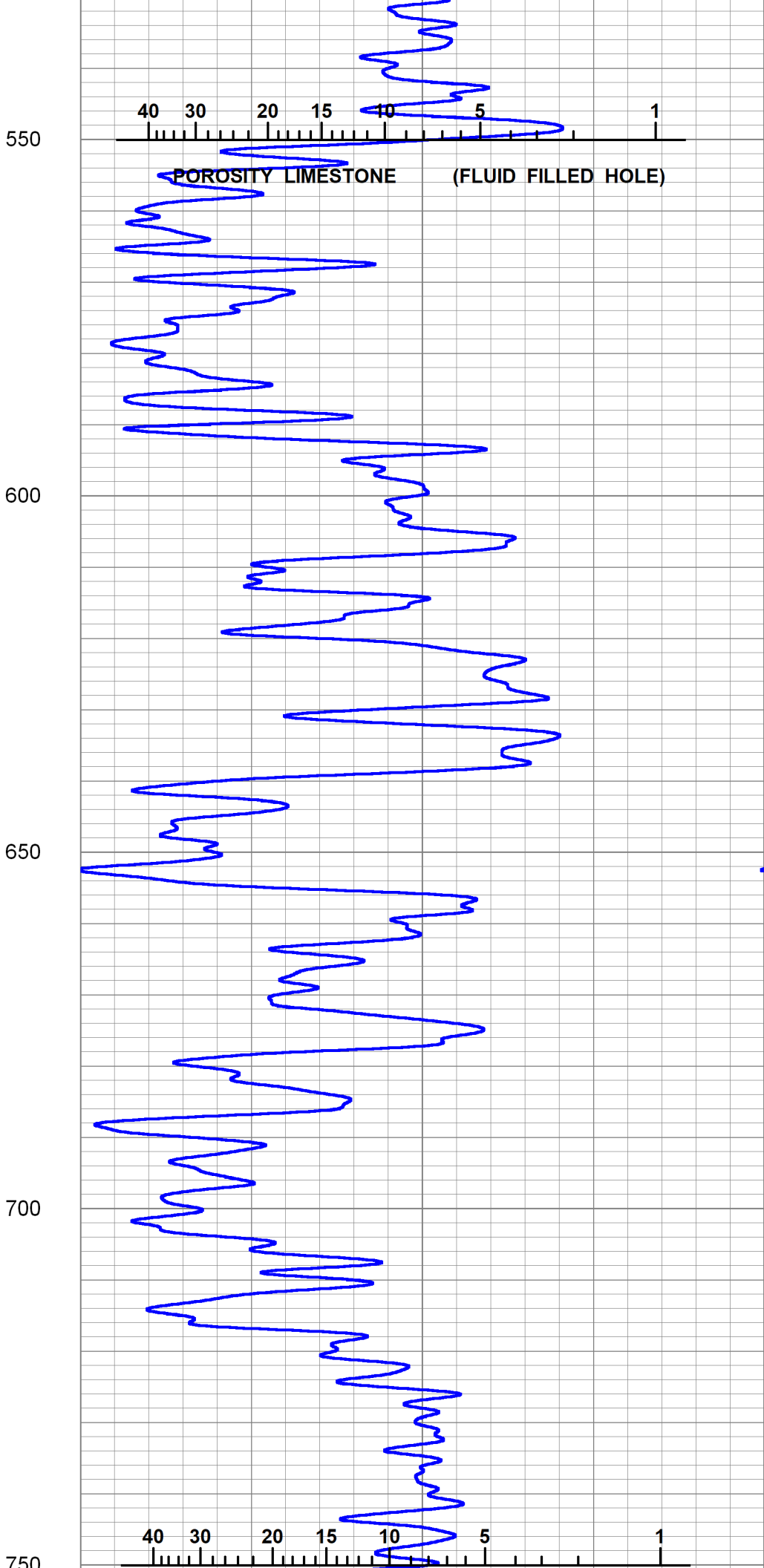
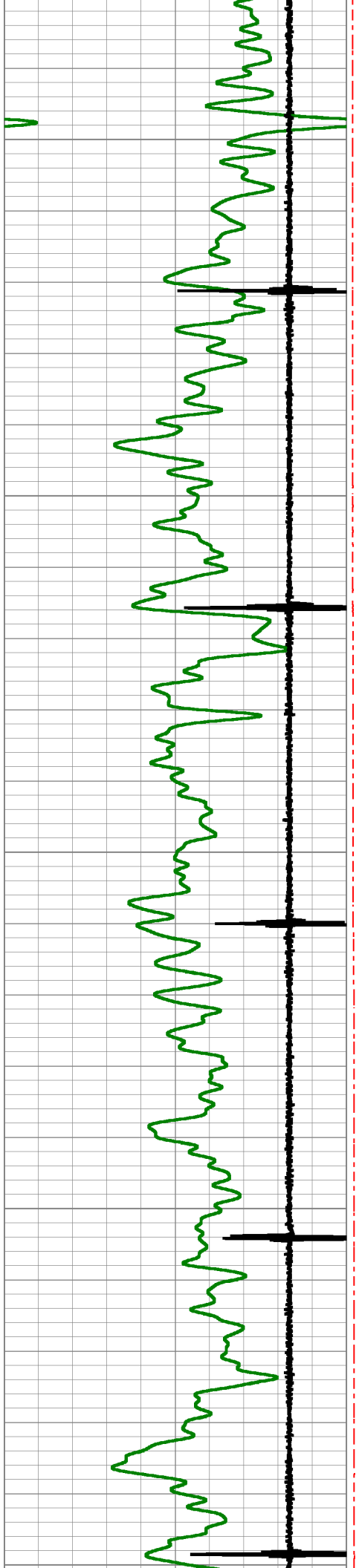


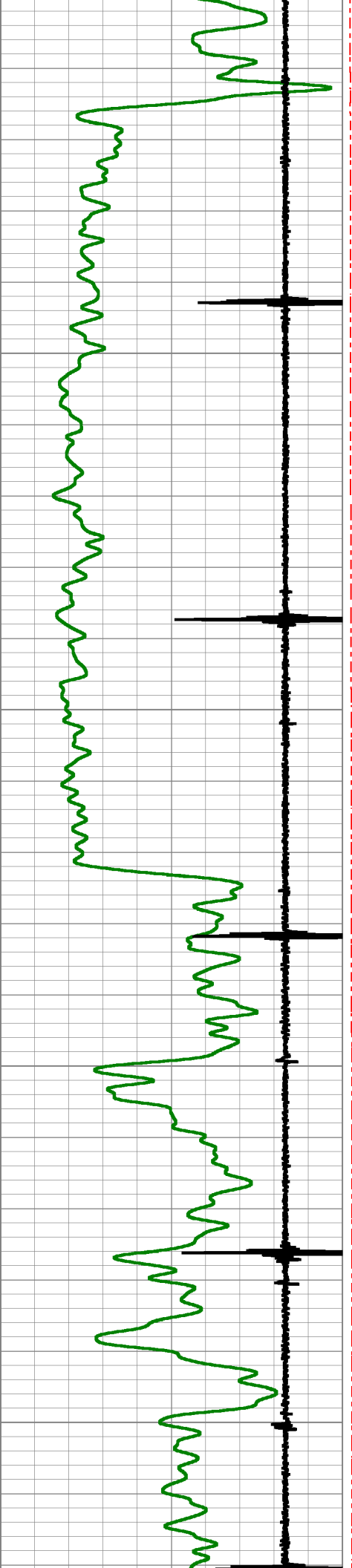
100
150
200
250
300



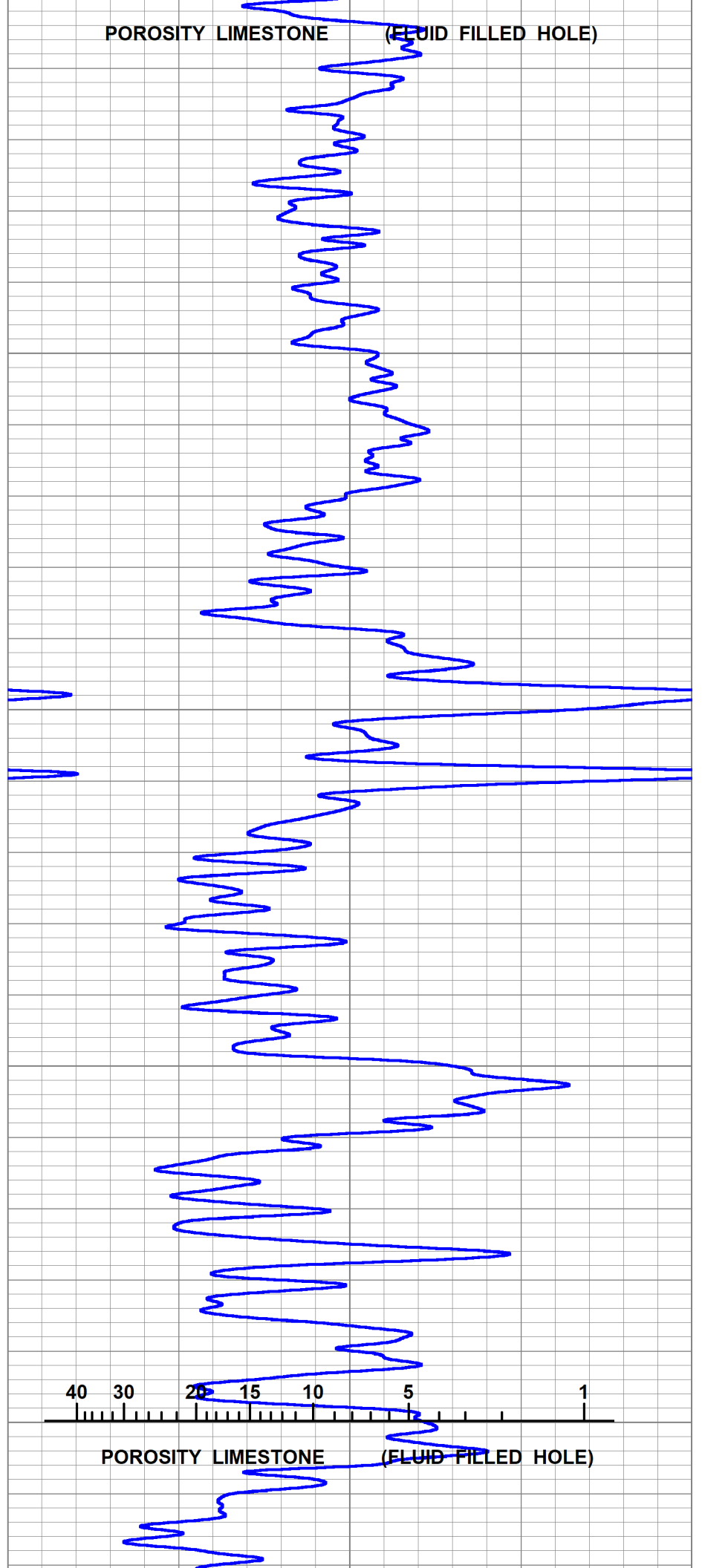
40 30 20 15 10 5 1
POROSITY LIMESTONE (FLUID FILLED HOLE)





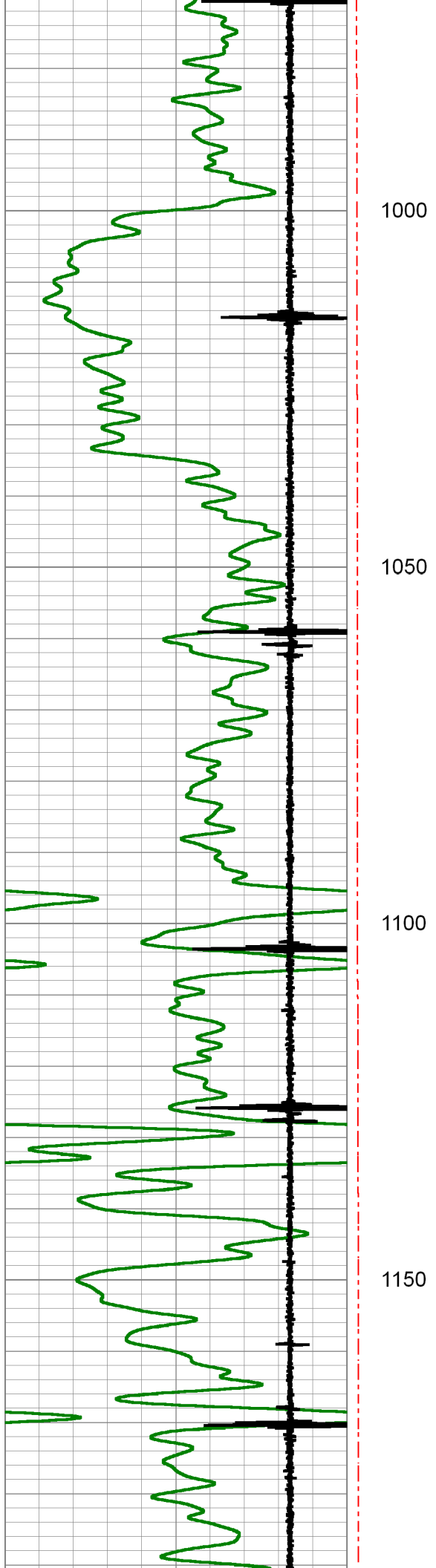


750
800
850
900
950



POROSITY LIMESTONE (FLUID FILLED HOLE)

POROSITY LIMESTONE (FLUID FILLED HOLE)

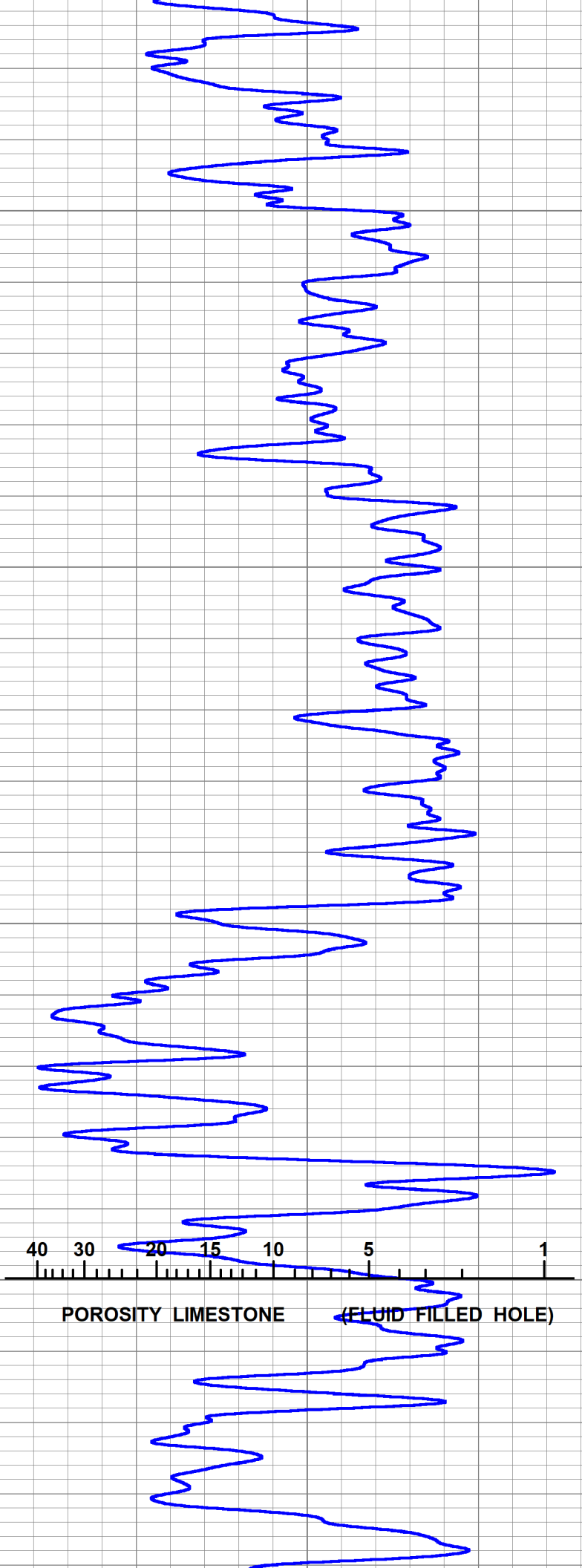


1000

1050

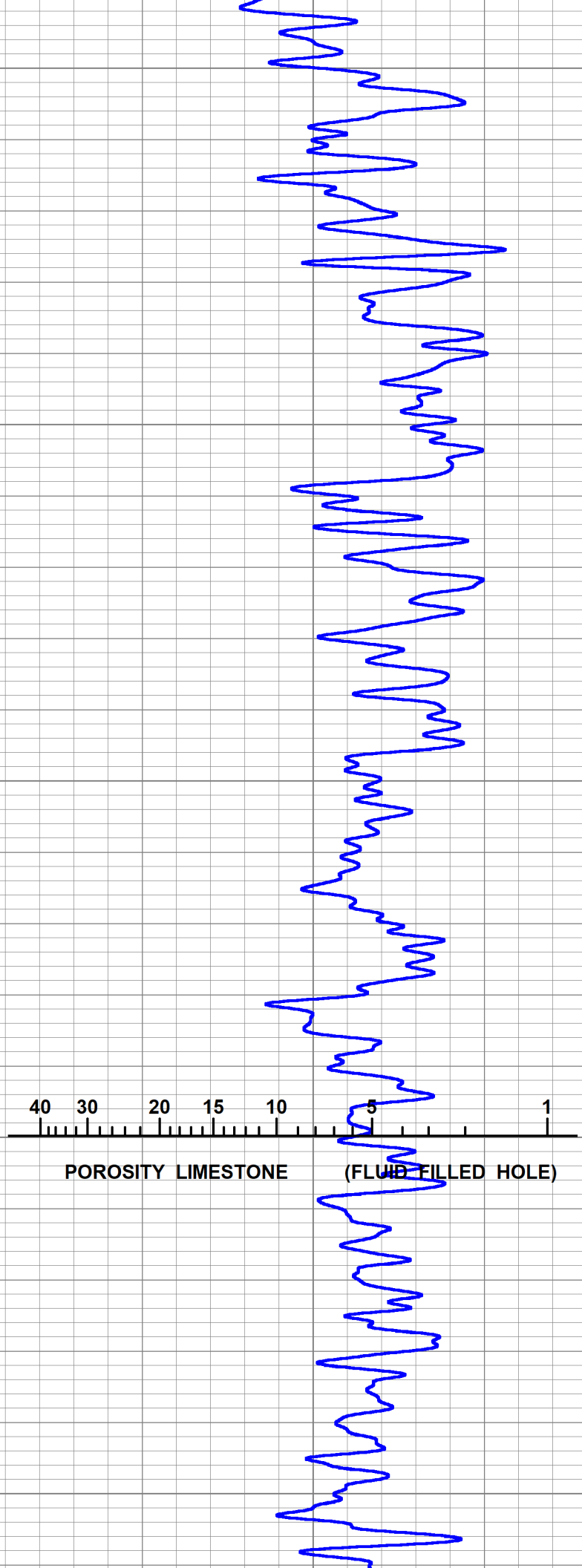
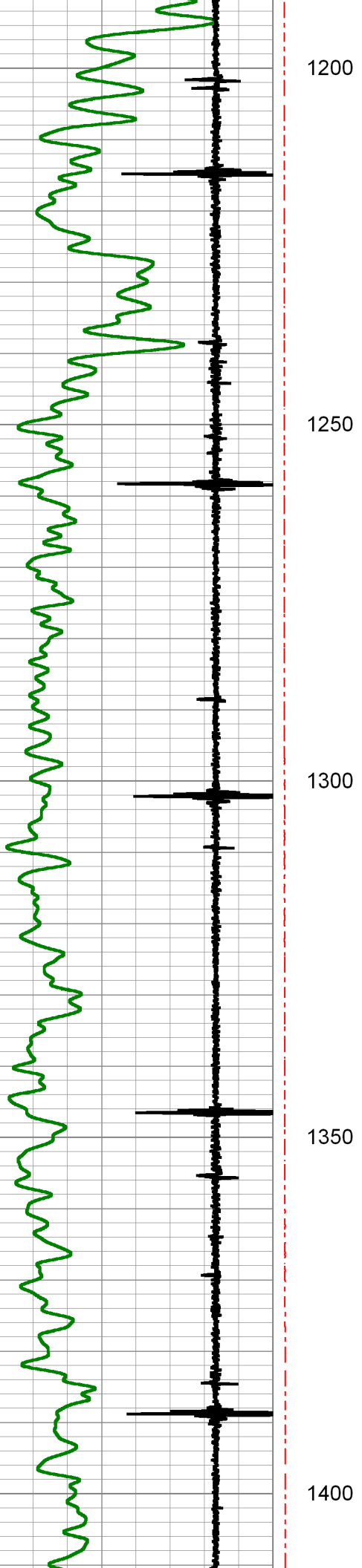
1100

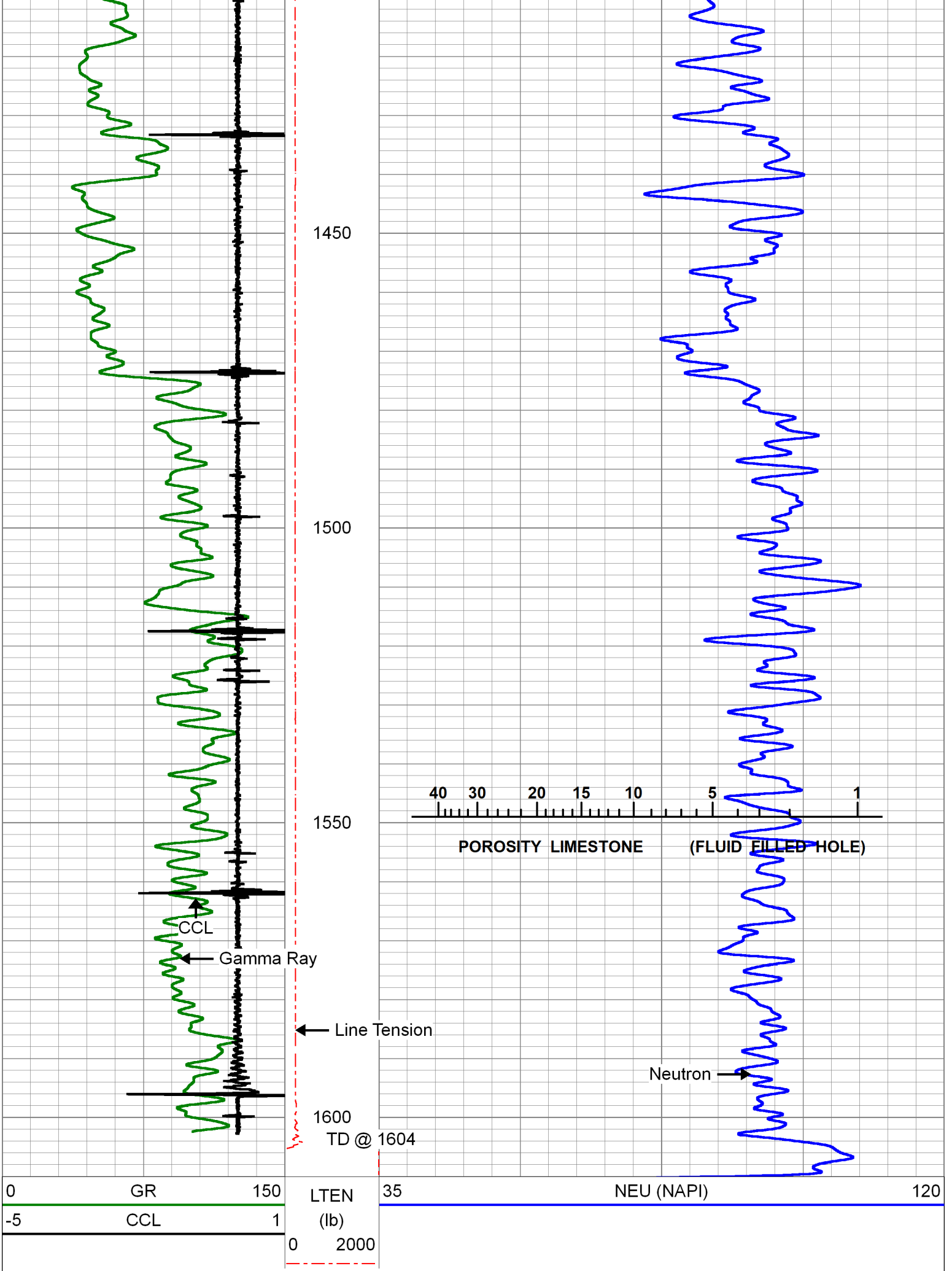
1150



40 30 20 15 10 5 1

POROSITY LIMESTONE (FLUID FILLED HOLE)





Database File	cholla_patterson#3_12swd_cblgn.db
Dataset Pathname	pass2
Presentation Format	Unknown
Dataset Creation	Thu Jul 18 11:45:04 2019
Charted by	Depth in Feet scaled 1:240

Calibration Report

Database File cholla_patterson#3_12swd_cblgn.db
Dataset Pathname pass3
Dataset Creation Thu Jul 18 11:52:21 2019

Neutron Calibration Report

Serial Number: ProbeNEU1
Tool Model: PRNEU
Performed: (Not Performed)

Calibrator Value: 1 NAPI
Calibrator Reading: 1 cps
Sensitivity: 1 NAPI/cps

Gamma Ray Calibration Report

Serial Number: 111032
Tool Model: 2 3/4" Probe
Performed: Tue Apr 03 09:45:00 2018

Calibrator Value: 1.0

Background Reading: 0.0 cps
Calibrator Reading: 1.0 cps
Sensitivity: 0.9000 /cps



PIONEER

Pioneer Energy Services

Company CHOLLA PRODUCTION, LLC
Well HOWAT #1
Field N/A
County TREGO
State KANSAS