



MIDWEST WIRELINE

# MICRORESISTIVITY LOG

Company Murfin Drilling Company, Inc.  
 Well Armbrister #1-36  
 Field Nicholson  
 County Trego  
 State Kansas

Company Murfin Drilling Company, Inc.  
 Well Armbrister #1-36  
 Field Nicholson  
 County Trego State Kansas

Location: API #: 15-195-23150-00-00  
 330 FNL & 1700 FWL  
 SEC 36 TWP 11S RGE 21W  
 Permanent Datum Ground Level Elevation 2296  
 Log Measured From Kelly Bushing  
 Drilling Measured From Kelly Bushing  
 Other Services  
 CNL/CDL  
 DIL/BHCS  
 Elevation  
 K.B. 2301  
 D.F.  
 G.L. 2296

Date	11/19/2022
Run Number	One
Depth Driller	4000
Depth Logger	3998
Bottom Logged Interval	3997
Top Log Interval	2700
Casing Driller	8:625 @ 220
Casing Logger	219
Bit Size	7.875
Type Fluid in Hole	Chemical
Salinity, ppm CL	3500
Density / Viscosity	9.0 62
pH / Fluid Loss	10.0 5.8
Source of Sample	Flowline
Rm @ Meas. Temp	0.80 @ 50
Rmt @ Meas. Temp	0.60 @ 50
Rmc @ Meas. Temp	1.08 @ 50
Source of Rmf / Rmc	Charts
Rm @ BHT	0.34 @ 116
Operating Rig Time	5 Hours
Max Rec. Temp. F	116
Equipment Number	P-24
Location	Hays
Recorded By	D. Schmidt
Witnessed By	Rod Anderson

<<< Fold Here >>>

All interpretations are opinions based on inferences from electrical or other measurements and Midwest Wireline LLC cannot and does not guarantee the accuracy or correctness of any interpretation, and Midwest Wireline LLC will not be liable or responsible for any loss, costs, damages, or expenses incurred or sustained by anyone resulting from any interpretation made by any of our officers, agents or employees.

### Comments

N/A DENOTES NOT AVAILABLE OR NON-APPLICABLE.

Ellis,  
 North to Sleepy Hollow, 3 West,  
 South into

Log Measured From: Kelly Bushing 5 Ft. Above Permanent Datum

THANK YOU FOR USING MIDWEST WIRELINE LLC  
 785-625-3858

### Your Midwest Wireline Crew

Engineer: D. Schmidt  
 Operator:  
 Operator:  
 Operator:

### This Log Record Was Witnessed By

Primary Witness: Rod Anderson  
 Secondary Witness:  
 Secondary Witness:  
 Secondary Witness:

Sensor	Offset (ft)	Schematic	Description	Length (ft)	O.D. (in)	Weight (lb)
GR	40.33		GR-M&W (106)	3.00	3.50	50.00
CNLSC CNSSC	37.23 36.48		CNT-M&W (207-MW)	5.00	3.50	100.00
LSD DCAL SSD	28.18 28.17 27.68		CDL-M&W (305-24)	8.50	4.00	250.00
MCAL MI MN	19.58 19.58 19.58		ML-PSIML (401)	7.58	4.00	65.00
RLL3F RLL3	15.50 15.50					
CILD	8.33		DIL-M&W (502 HT)	18.25	3.50	220.00
CILM	4.50					
SP	0.20					

Dataset: murfin\_arbrister 1-36.db: field/well/stkml/pass3.1  
 Total length: 42.33 ft  
 Total weight: 685.00 lb  
 O.D.: 4.00 in

# Log Variables

DatabaseC:\ProgramData\Warrior\Data\murfin\_arbrister 1-36.db  
 Dataset field/well/stkml/pass3.1/\_vars\_

## Top - Bottom

A	BOREID in	BOTTEMP degF	CASEOD in	CASETHCK in	FLUIDDEN g/cc	M	MATRXDEN g/cc
1	7.875	116	4.5	0	1	2	2.71
NPORSEL	PERFS	SNDERR mmho/m	SNDERRM mmho/m	SPSHIFT mV	SRFTEMP degF	SZCOR	TDEPTH ft
Limestone	0	0	0	33	40	Off	3998

## Variable Description

A : Cement Factor (a)  
 BOREID : Borehole I.D.  
 BOTTEMP : Bottom Hole Temperature  
 CASEOD : Casing O.D.  
 CASETHCK : Casing Thickness  
 FLUIDDEN : Fluid Density  
 M : Cement Exp (m)  
 MATRXDEN : Matrix Density

NPORSEL : Neutron Porosity Curve Select  
 PERFS : Perforation Flag  
 SNDERR : Deep Sonde Error Correction  
 SNDERRM : Medium Sonde Error Correction  
 SPSHIFT : S.P. Baseline Offset  
 SRFTEMP : Surface Temperature  
 SZCOR : CN Size Cor. ?  
 TDEPTH : Total Depth



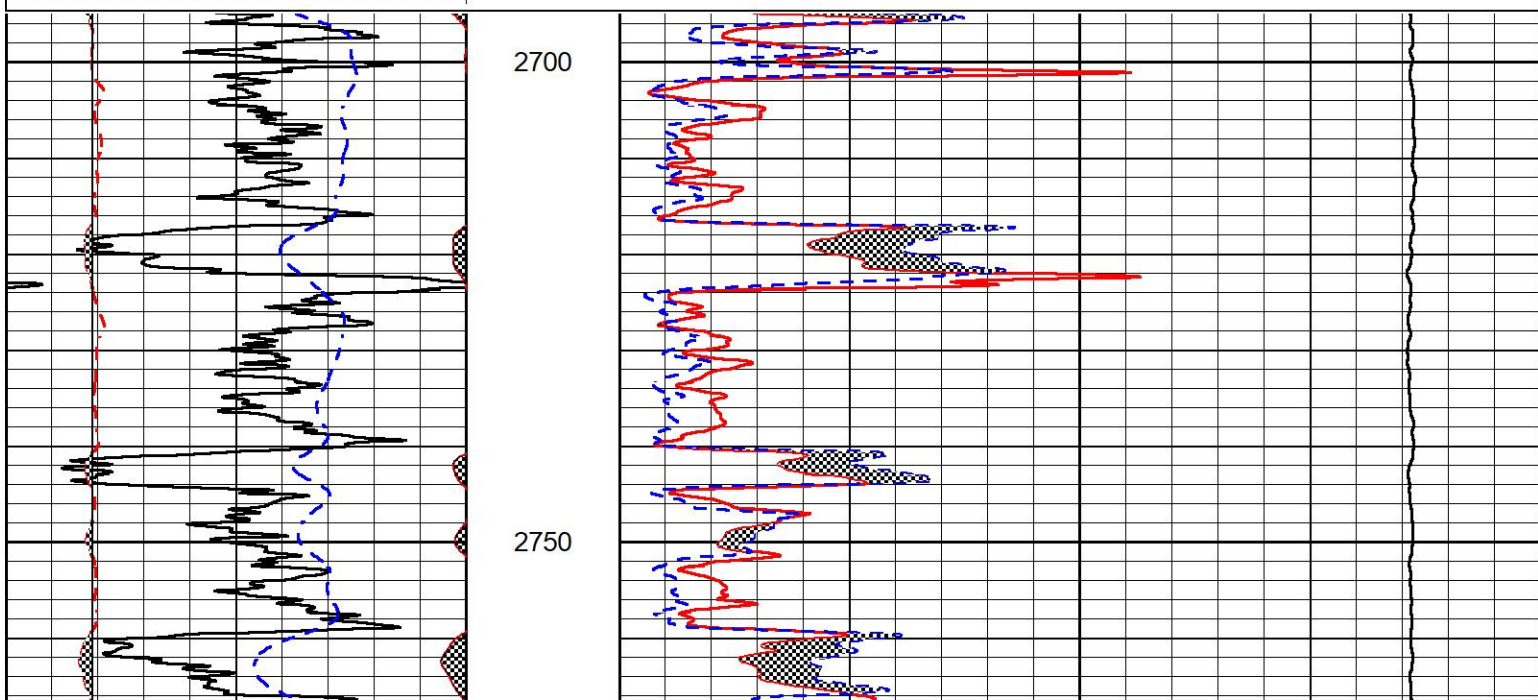
## DETAIL SECTION

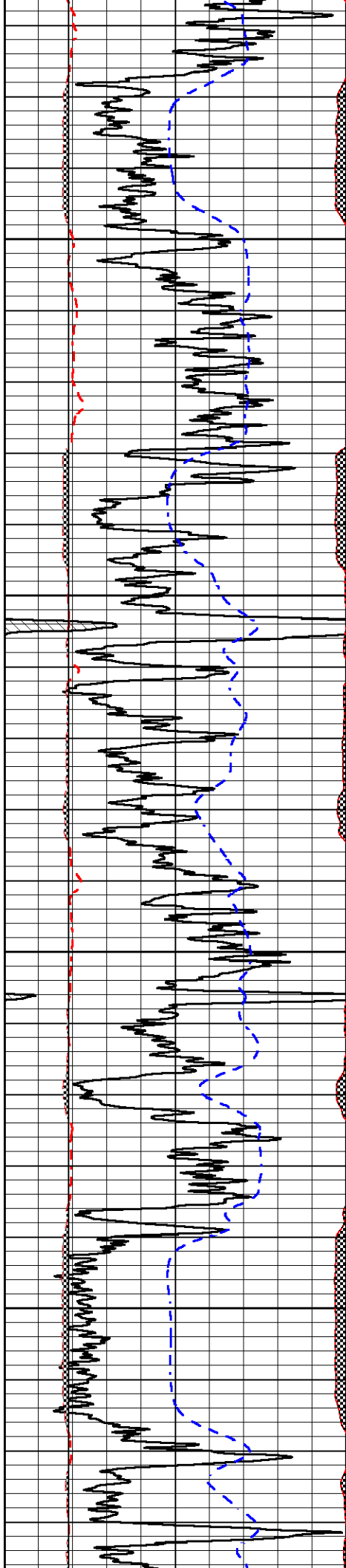
### MAIN PASS

Database File murfin\_arbrister 1-36.db  
 Dataset Pathname stkml/pass3.1  
 Presentation Format \_micro  
 Dataset Creation Sat Nov 19 15:53:08 2022  
 Charted by Depth in Feet scaled 1:240

0	Gamma Ray (GAPI)	150
6	Caliper (in)	16
2.875	mcal (in)	7.875
-200	sp (mV)	0

0	Micro Inverse 1 X 1 (Ohm-m)	40
0	Micro Normal 2" (Ohm-m)	40
10000	Line Weight (lb)	0



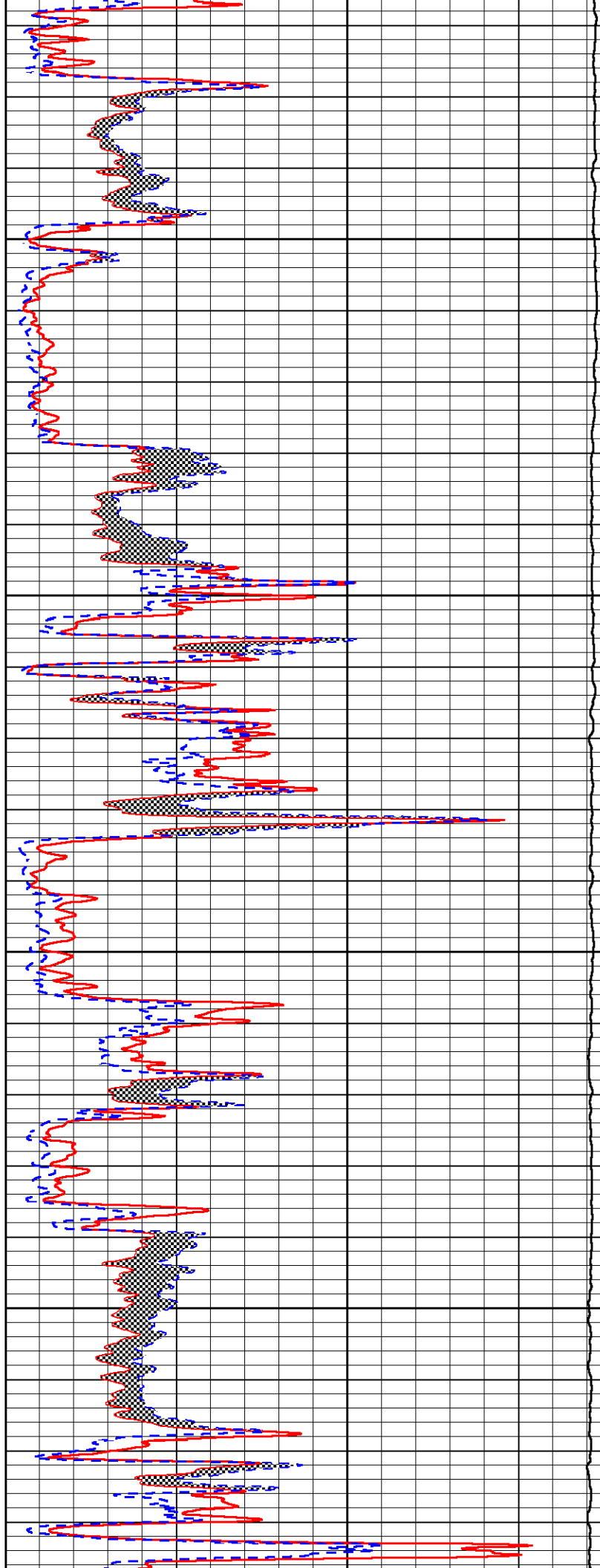


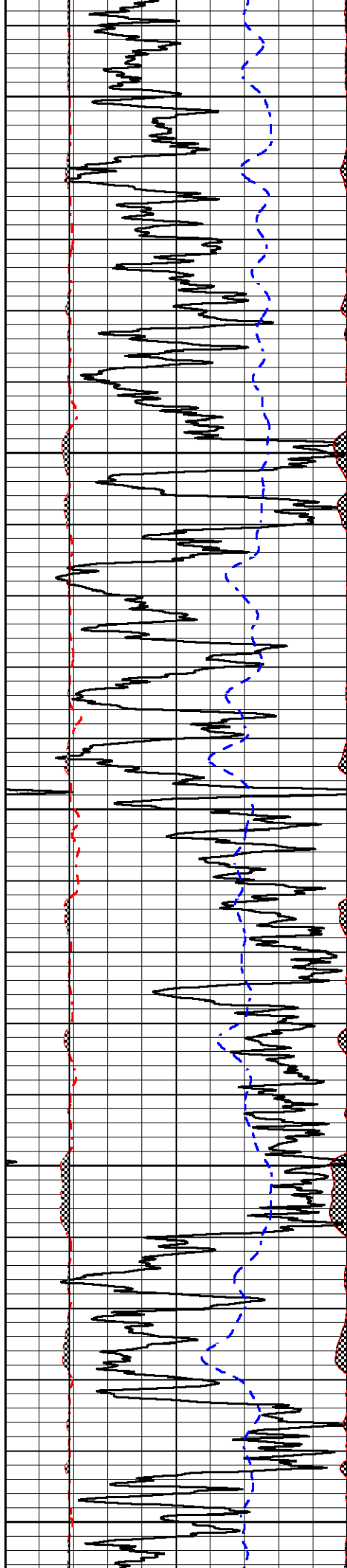
2800

2850

2900

2950





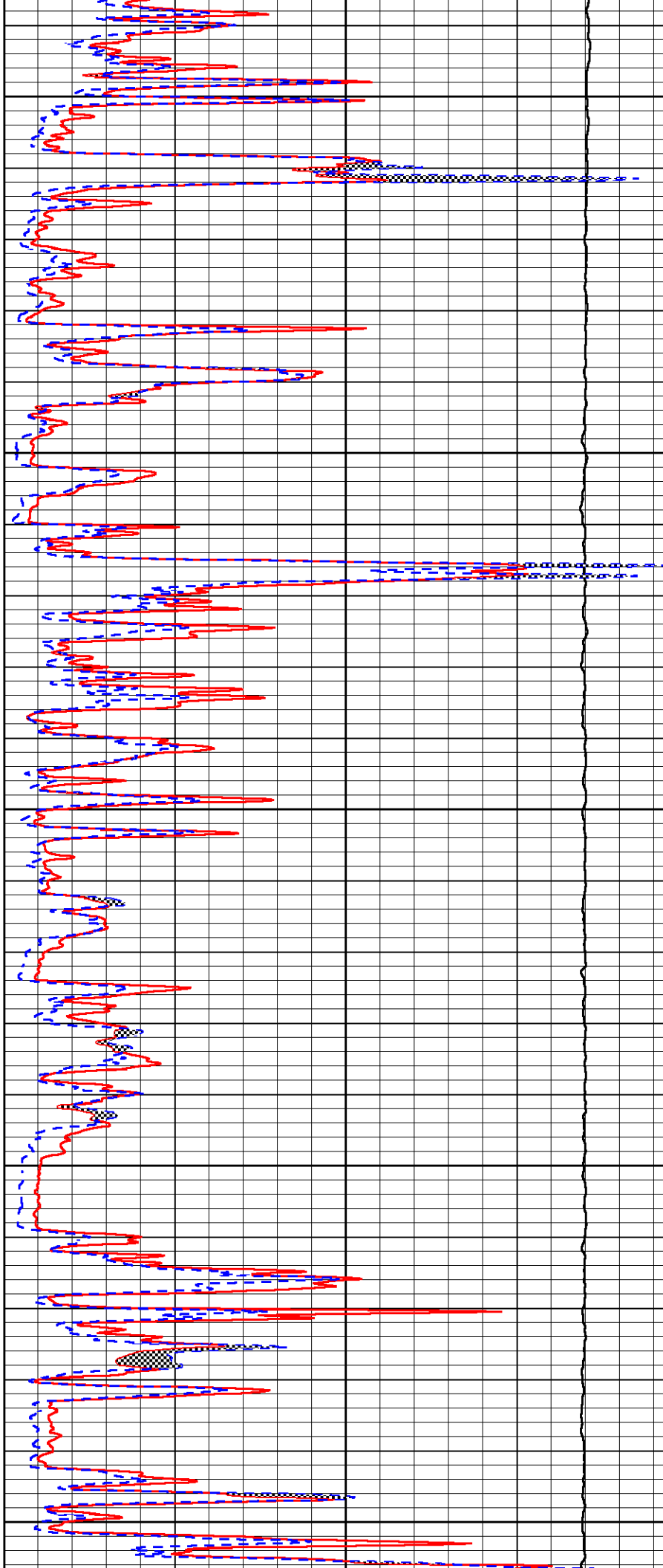
3000

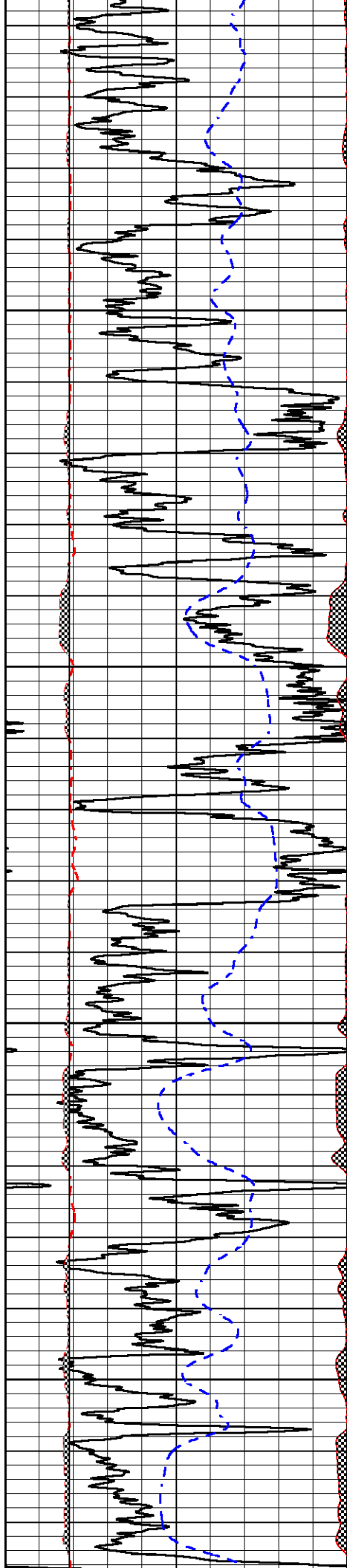
3050

3100

3150

3200



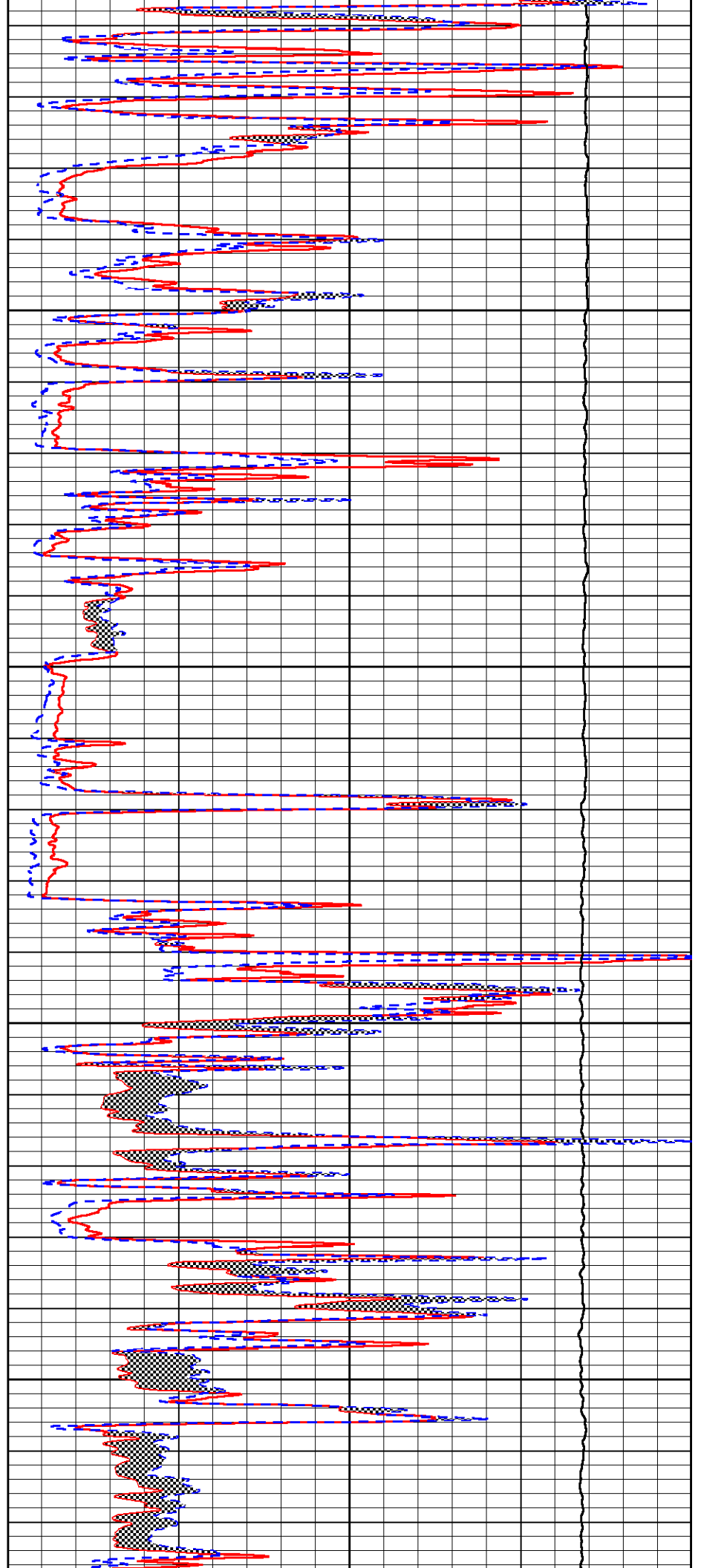


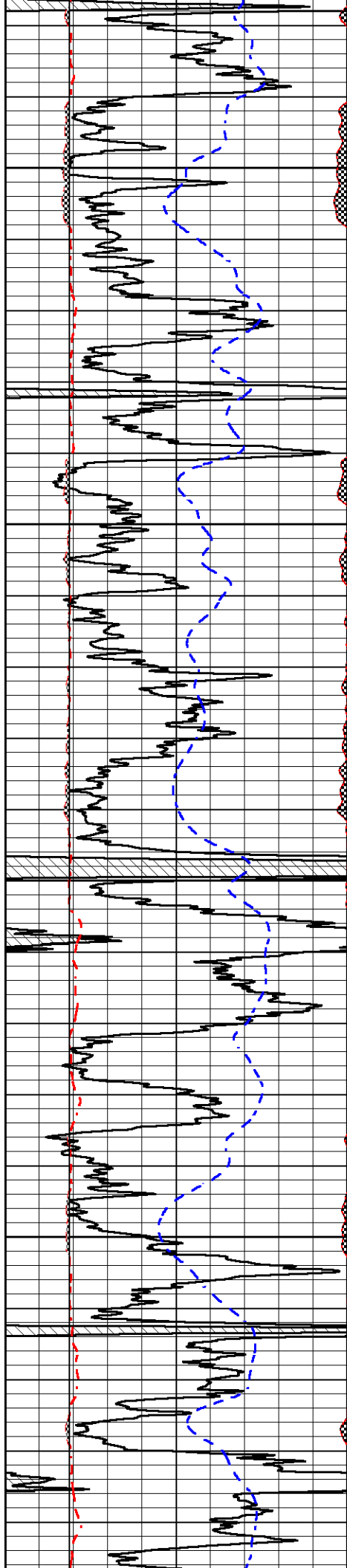
3250

3300

3350

3400



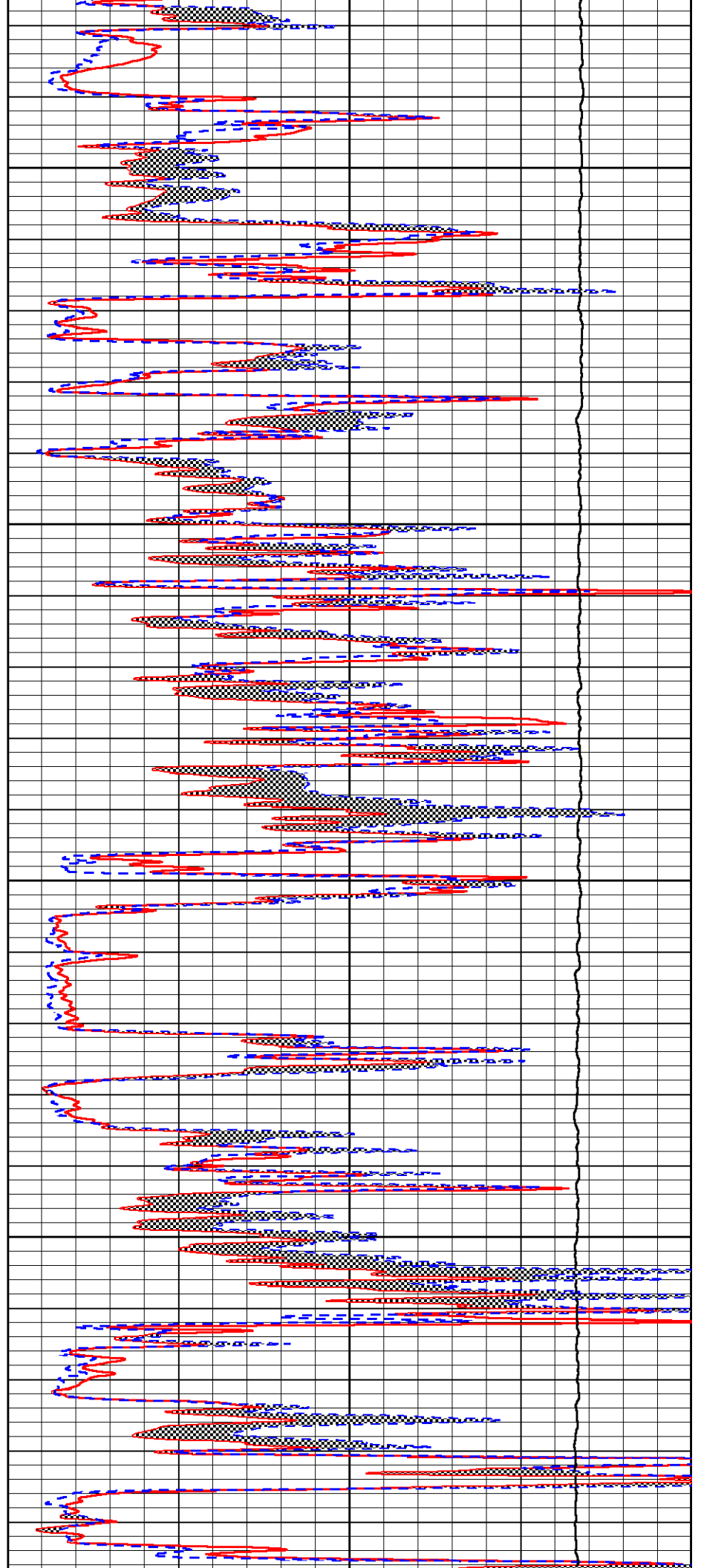


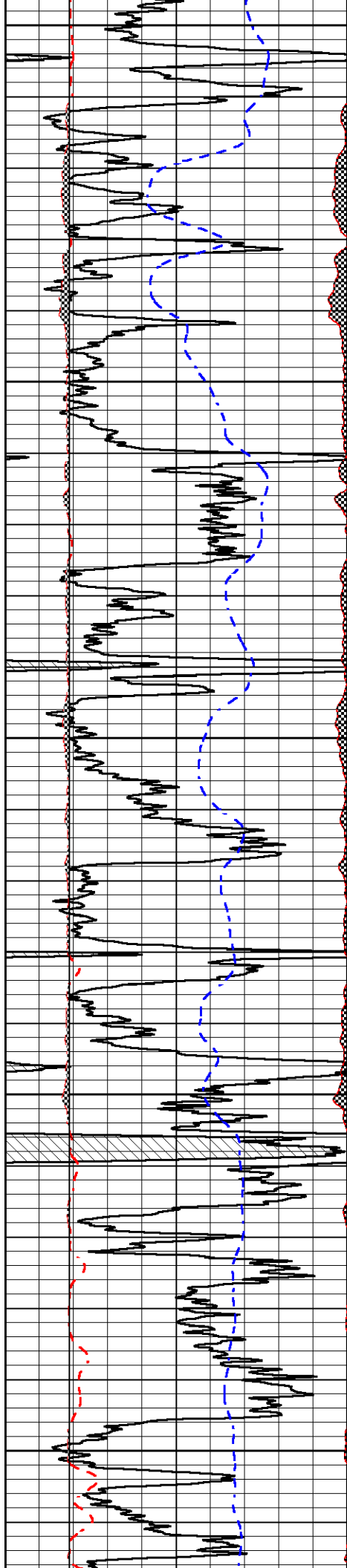
3450

3500

3550

3600





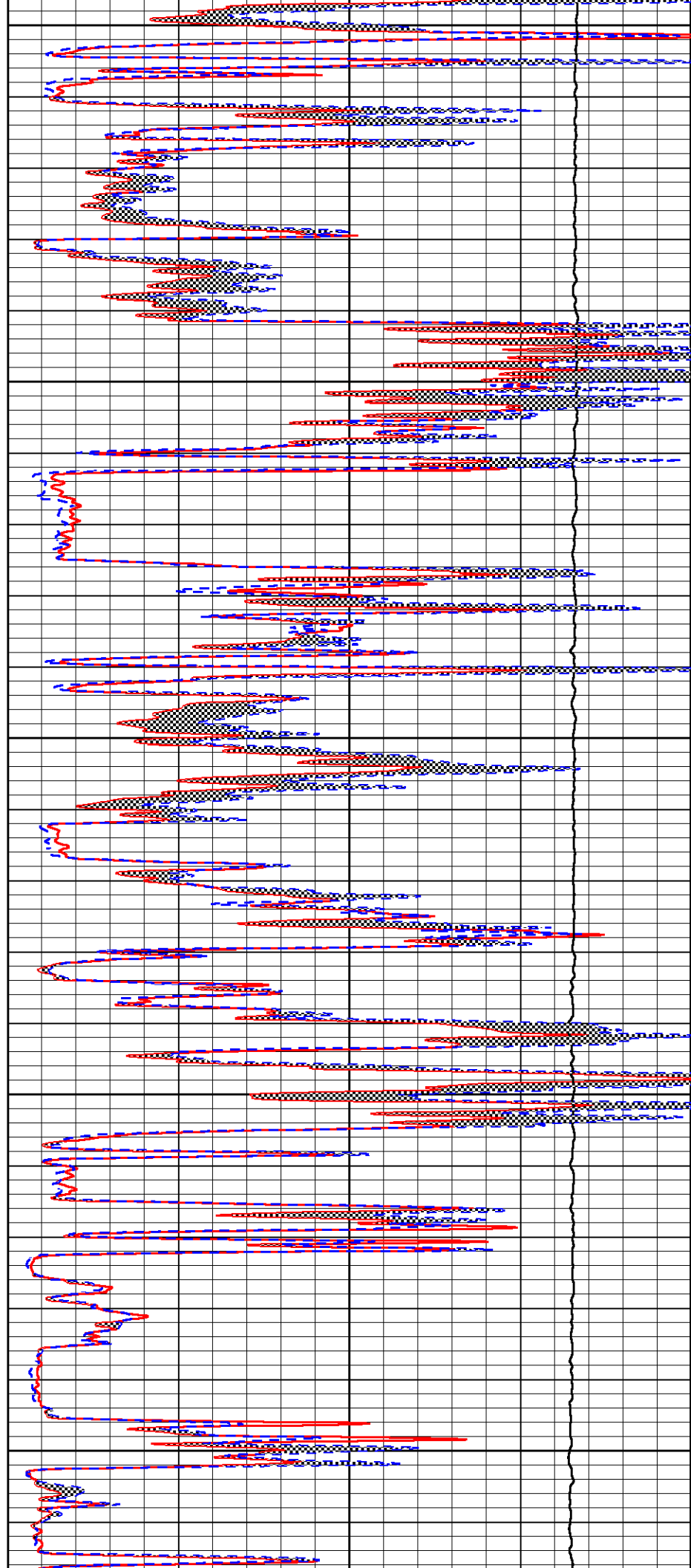
3650

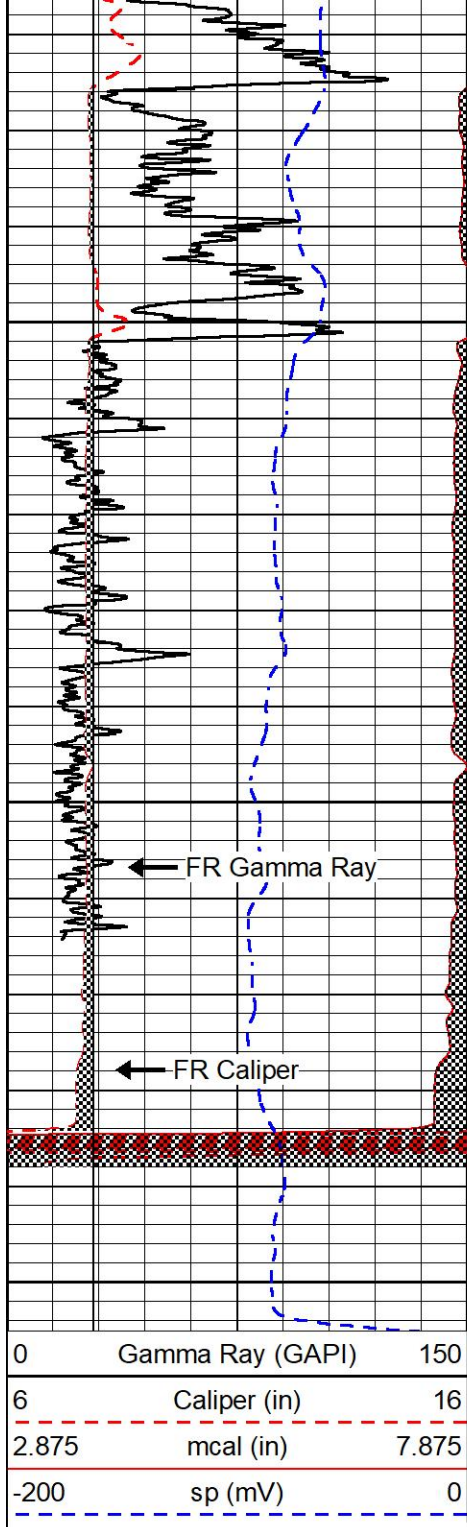
3700

3750

3800

3850

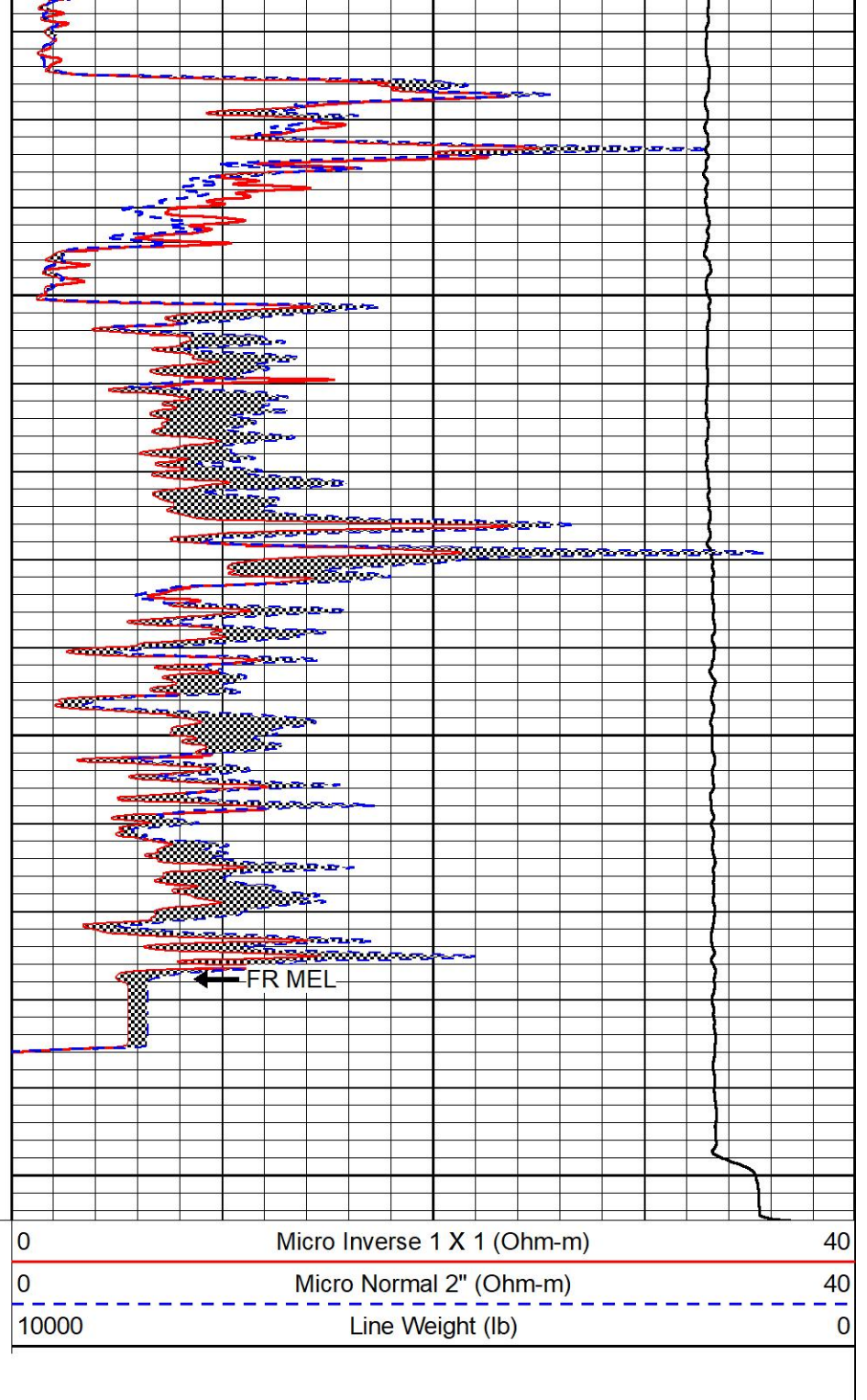




3900

3950

4000



## REPEAT SECTION

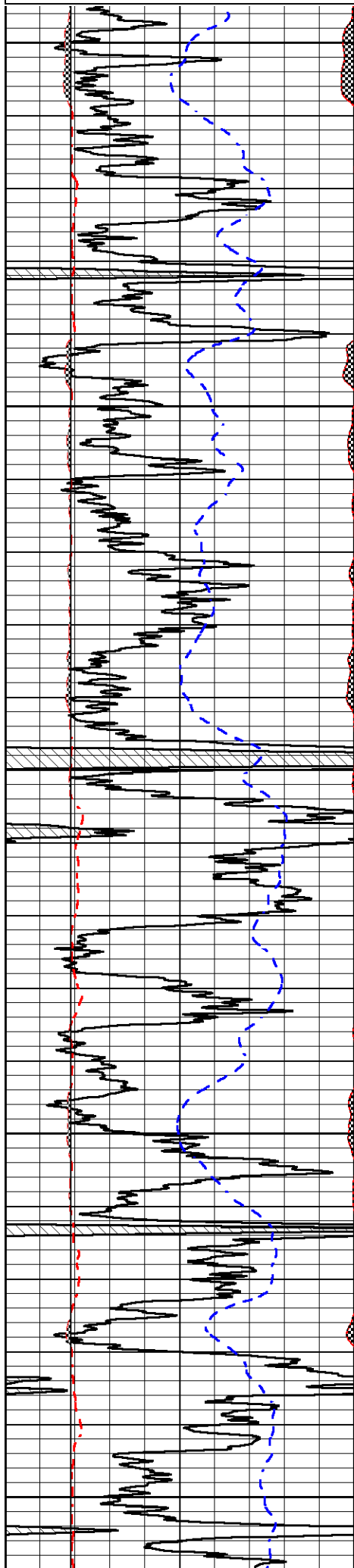
### REPEAT PASS

Database File murfin\_arbrister 1-36.db  
 Dataset Pathname stkml/pass2.16  
 Presentation Format \_micro  
 Dataset Creation Sat Nov 19 15:44:43 2022  
 Charted by Depth in Feet scaled 1:240

0	Gamma Ray (GAPI)	150
6	Caliper (in)	16
2.875	mcal (in)	7.875

0	Micro Inverse 1 X 1 (Ohm-m)	40
0	Micro Normal 2" (Ohm-m)	40
10000	Line Weight (lb)	0

-200 sp (mV) 0



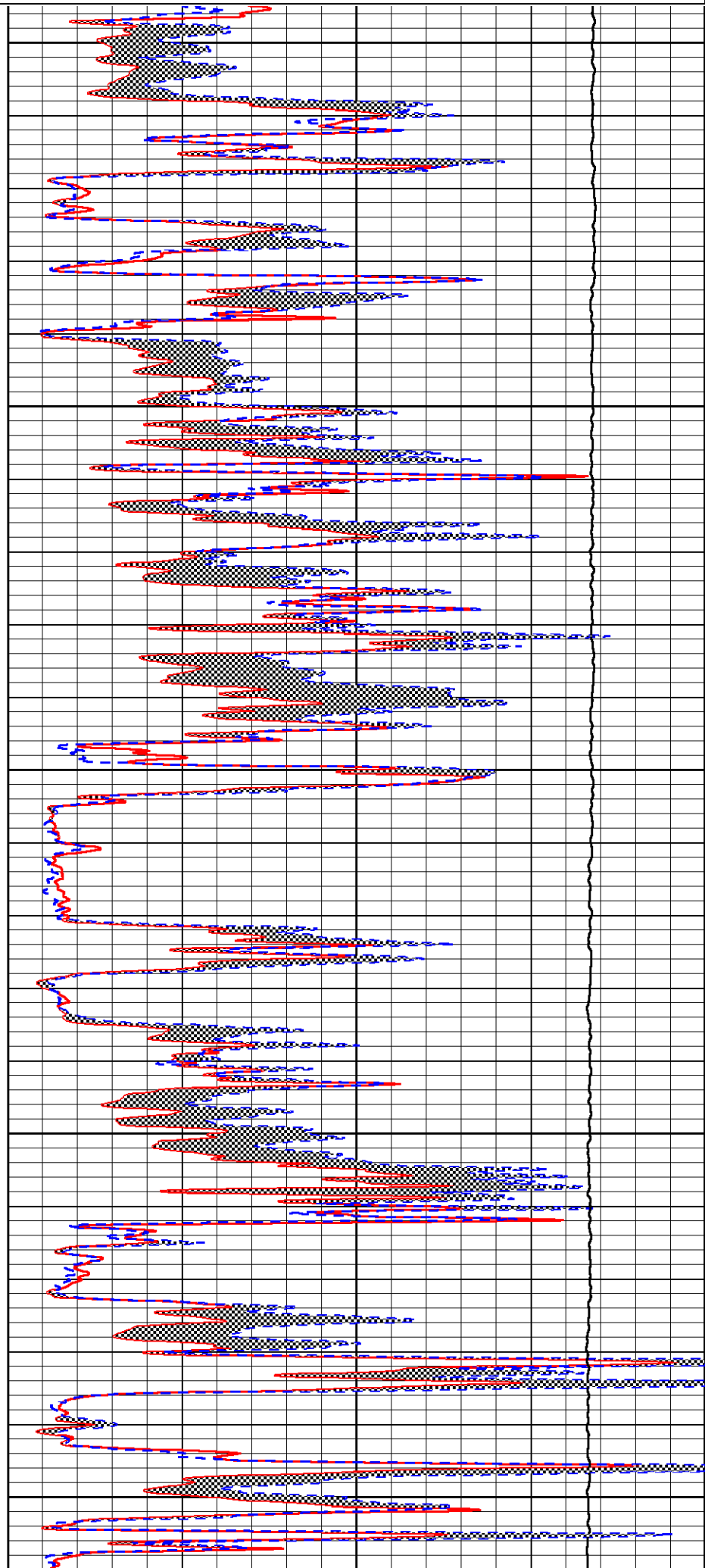
3450

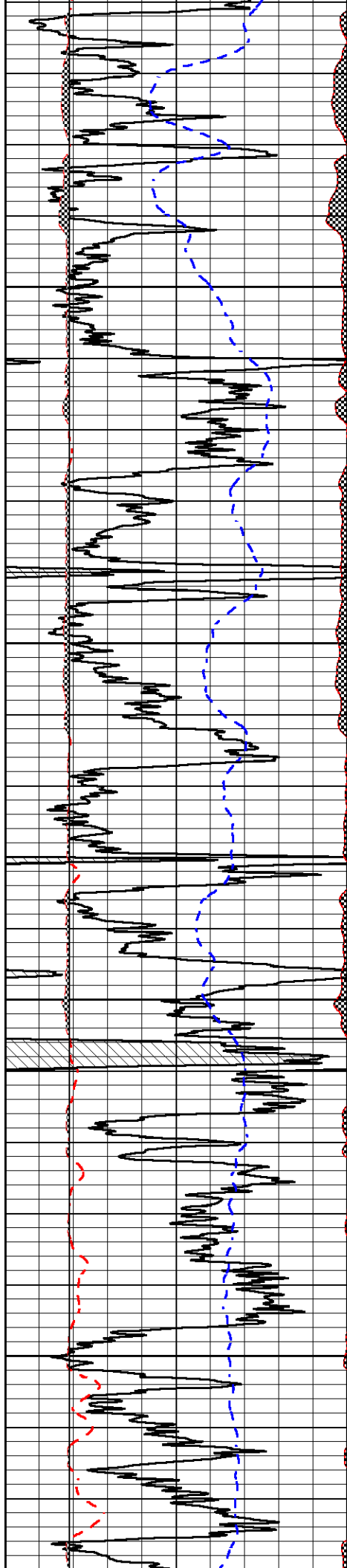
3500

3550

3600

3650



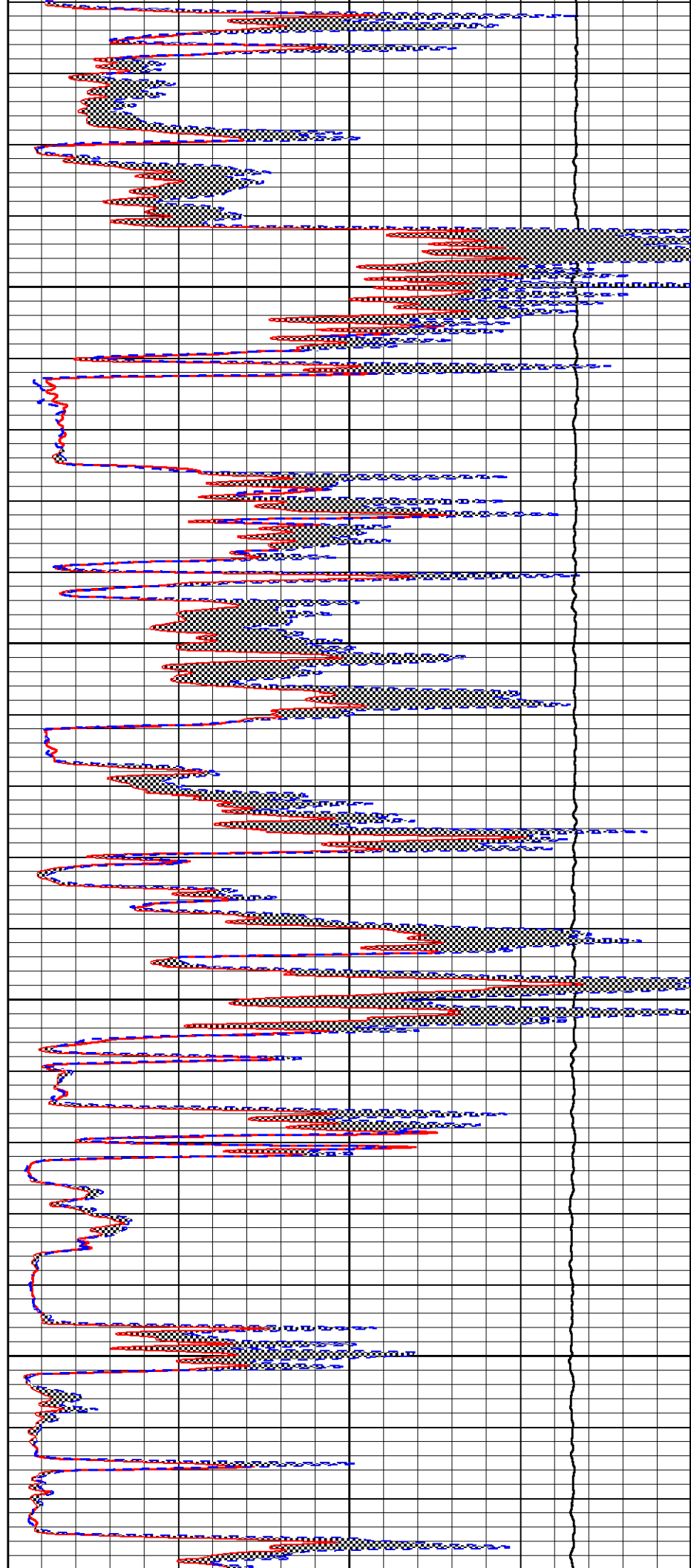


3700

3750

3800

3850





	Readings		References			Results	
	Zero	Cal	Zero	Cal		m	b
Normal	0.0000	1.0000	0.0000	1.0000	Ohm-m	9000.0000	-0.6500
Inverse	0.0000	1.0000	0.0000	1.0000	Ohm-m	8000.0000	0.0000
Caliper	1.0052	1.0858	5.0000	16.5000	in	98.0000	-93.2500

Compensated Density Calibration Report

Serial-Model: 305-24-M&W  
 Source #: 20762B  
 Master Calibration Performed: Mon Jun 20 16:54:11 2022

Master Calibration

	Density		Far Detector	Near Detector	
Magnesium	1.755	g/cc	4771.35	5494.27	cps
Aluminum	2.650	g/cc	908.54	3539.54	cps
Spine Angle = 75.15			Density/Spine Ratio = 0.522		
	Size		Reading		
Small Ring	4.00	in	1.74		
Large Ring	14.00	in	1.38		

Compensated Neutron Calibration Report

Serial Number: 207-MW  
 Tool Model: M&W

CALIBRATION

Detector	Readings	Target	Normalization
Short Space	6240.00 cps	1000.00 cps	1.6025
Long Space	460.00 cps	1000.00 cps	1.9500

PRE-SURVEY VERIFICATION

	Detector	Readings	Measured	Target
1)	Short Space	cps		
	Long Space	cps	pu	pu
2)	Short Space	cps		
	Long Space	cps	pu	
3)	Short Space	cps		
	Long Space	cps	pu	

POST-SURVEY VERIFICATION

	Detector	Readings	Measured	Target
1)	Short Space	cps		
	Long Space	cps	pu	pu
2)	Short Space	cps		
	Long Space	cps	pu	pu

3) Short Space  
Long Space

cps  
cps

pu

pu

Gamma Ray Calibration Report

Serial Number:	106	
Tool Model:	M&W	
Performed:	Fri Dec 3 15:10:46 2021	
Calibrator Value:	500.0	GAPI
Background Reading:	24.0	cps
Calibrator Reading:	637.0	cps
Sensitivity:	0.5500	GAPI/cps



MIDWEST WIRELINE

Company	Murfin Drilling Company, Inc.
Well	Armbrister #1-36
Field	Nicholson
County	Trego
State	Kansas