



MIDWEST SURVEYS
 LOGGING - PERFORATING - CONSULTING SERVICES
 P.O. Box 88, Osawatomie, KS 66064
 913 / 735 - 2128

GAMMA RAY / NEUTRON / CCL

File No.

Company **SCZ Resources, LLC.**

Well **Rubow No. R-F14**

Field **Perry - Halligan**

County **Wilson**

State **Kansas**

Location **1815 FNL & 825 FEL**

SE-NW-SE-NE

Other Services
Perforate

Sec 6 Type 27s Ege 17e

Permanent Datum GL Elevation 1024'

Log Measured From GL K.B. NA

Drilling Measured From GL D.F. NA

GL E.L. 1024'

Date 12-10-2014

Run Number One

Depth Driller 1012.0

Depth Logger 1011.0

Bottom Logged Interval 1000.0

Top Log Interval 200.0

Fluid Level Full

Type Fluid Water

Density / Viscosity NA

Salinity - PPM Cl NA

Max. Recorded Temp NA

Estimated Cement Top 0.0

Equipment No. Location 107 Osawatomie

Recorded By Steve Winkisch

Witnessed By Mark Brecheisen

BOREHOLE RECORD

CASING RECORD

TO 20.0

FROM 0.0

TO 1007.0

FROM 20.0

SIZE 7.00"

WTG. 17.0#

FROM 0.0

TO 2.875"

WTG. 6.5#

FROM 0.0

TO 1007.0

FROM 20.0

TO 1007.0

FROM 20.0

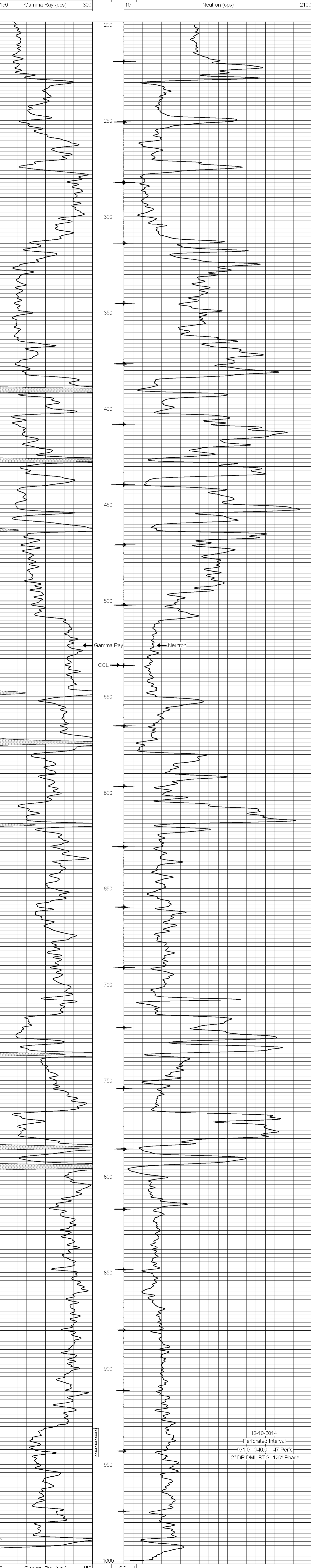
<<< Fold Here >>>

All interpretations are opinions based on inferences from electrical or other measurements and we cannot and do not guarantee the accuracy or correctness of any interpretation, and we shall not, except in the case of gross or willful negligence on our part, be liable or responsible for any loss, costs, damages, or expenses incurred or sustained by anyone resulting from any interpretation made by any of our officers, agents or employees. These interpretations are also subject to our general terms and conditions set out in our current Price Schedule.

Comments

Drilling Contractor :
Hat Drilling, LLC

Database File: rubow 14fr.db
 Dataset Pathname: pass1
 Presentation Format: gr-n-ccl
 Dataset Creation: Wed Dec 10 12:13:40 2014 by Log SCH 111116
 Charted by: Depth in Feet scaled 1:240



Gamma Ray (cps) 0 150
 Neutron (cps) 10 2100