



MIDWEST SURVEYS
 LOGGING - PERFORATING - CONSULTING SERVICES
 P.O. Box 68, Osawatomie, KS 66064
 913 / 756 - 2128

GAMMA RAY / NEUTRON / CCL

File No.

Company Laymon Oil II, LLC.

Well Griser No. 27-15

Field Owl Creek

County Woodson

State Kansas

Location

2240' FSL & 4065' FEL

SE-NE-NW-SW

Other Services

Perforate

Sec. 5

Perm. Dam. Typ. 255

Log Measured From

Drilling Measured From

Date

Run Number

Depth Driller

Bottom Logged Interval

Top Log Interval

Fluid Level

Type Fluid

Density / Viscosity

Salinity - PPM Cl

Max Recorded Temp

Equipment No.

Recorded By

Witnessed By

RUN

No.

BIT

Two

10.675"

6.00"

40.0

10800.0

40.0

8.625"

2.875"

TO

FROM

SIZE

WGT.

FROM

TO

FROM

SIZE

WGT.

FROM

TO

FROM

SIZE

WGT.

FROM

TO

FROM

SIZE

WGT.

FROM

TO

FROM

SIZE

WGT.

FROM

TO

FROM

SIZE

WGT.

FROM

TO

FROM

SIZE

WGT.

FROM

TO

FROM

SIZE

WGT.

FROM

TO

FROM

SIZE

WGT.

FROM

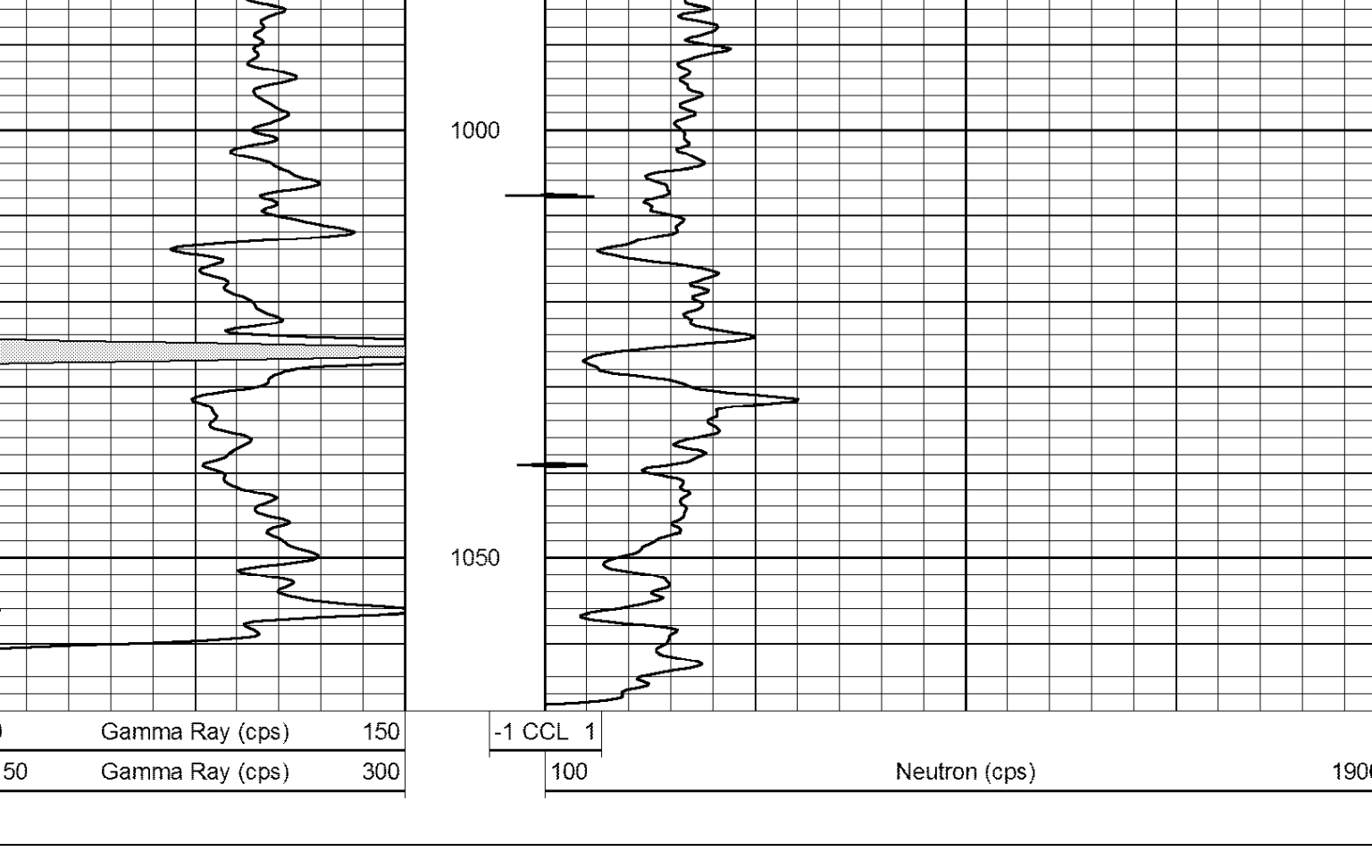
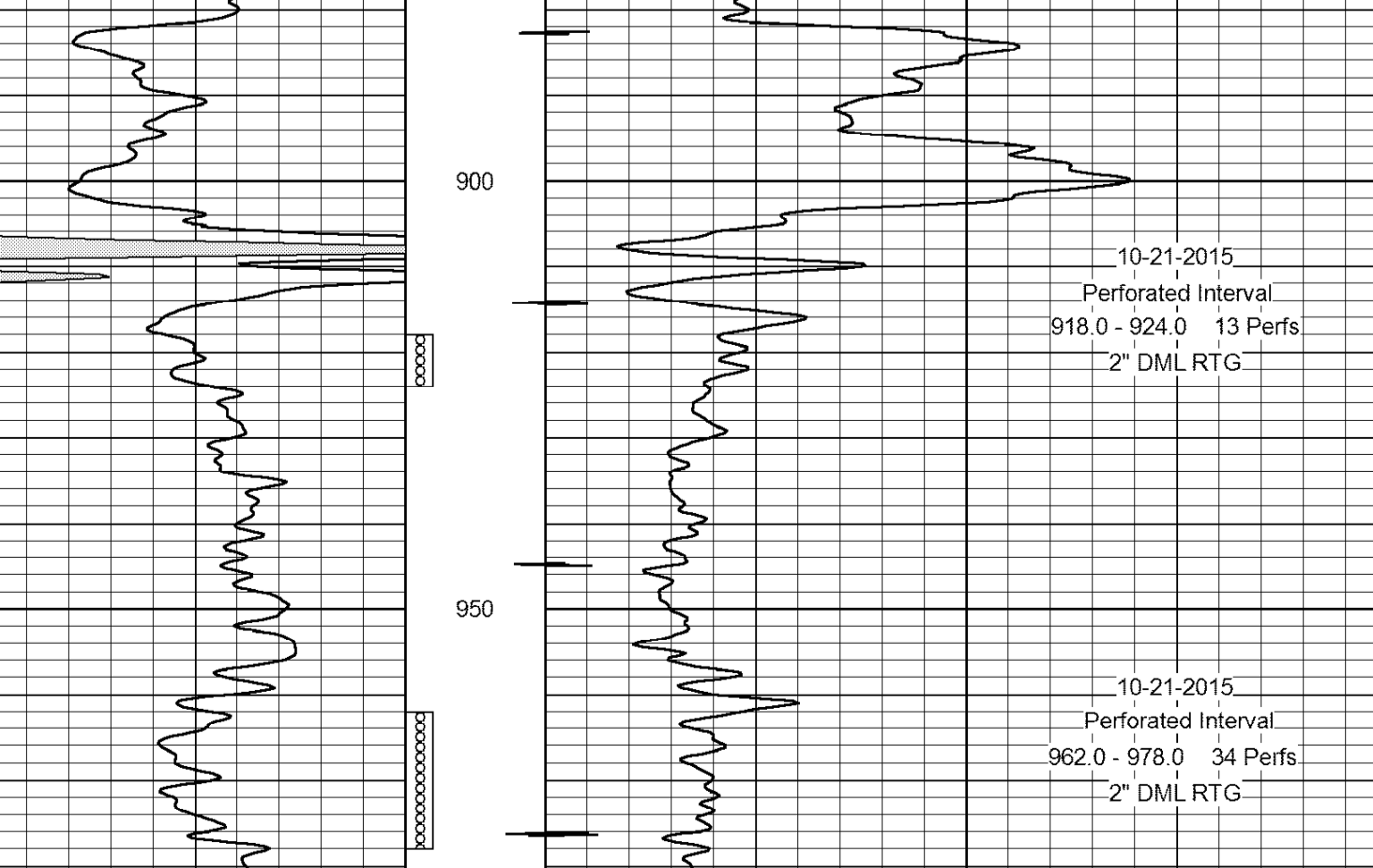
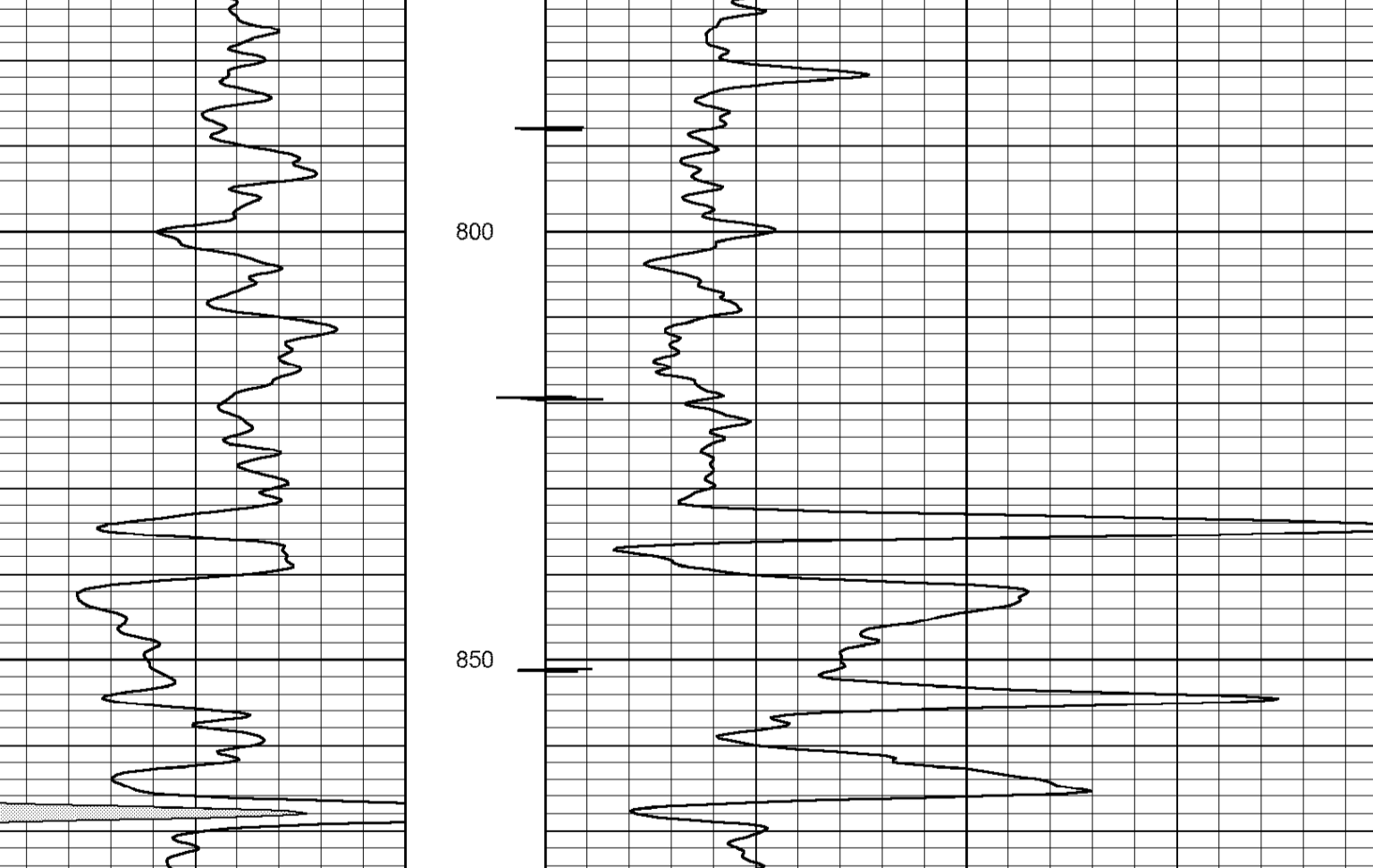
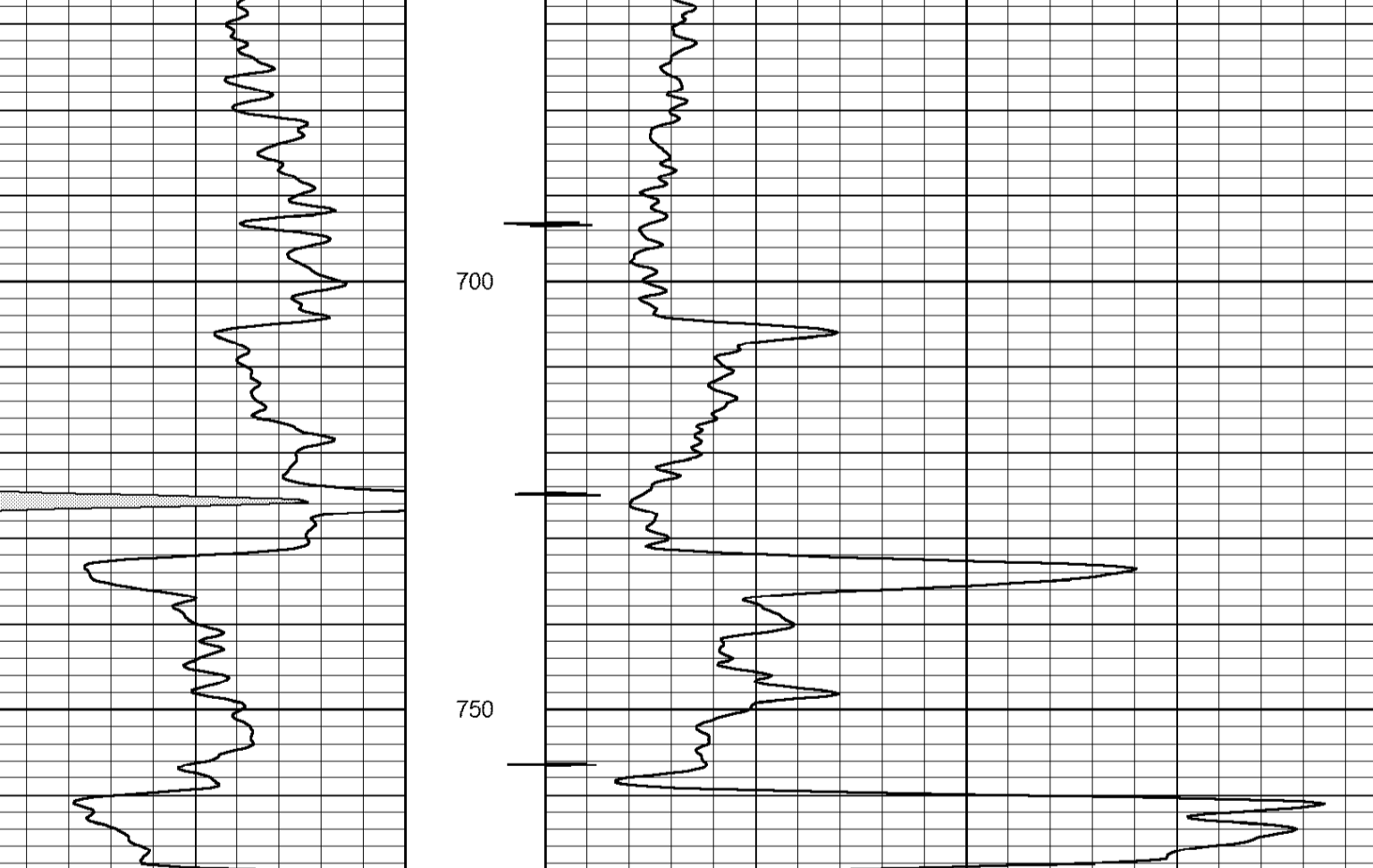
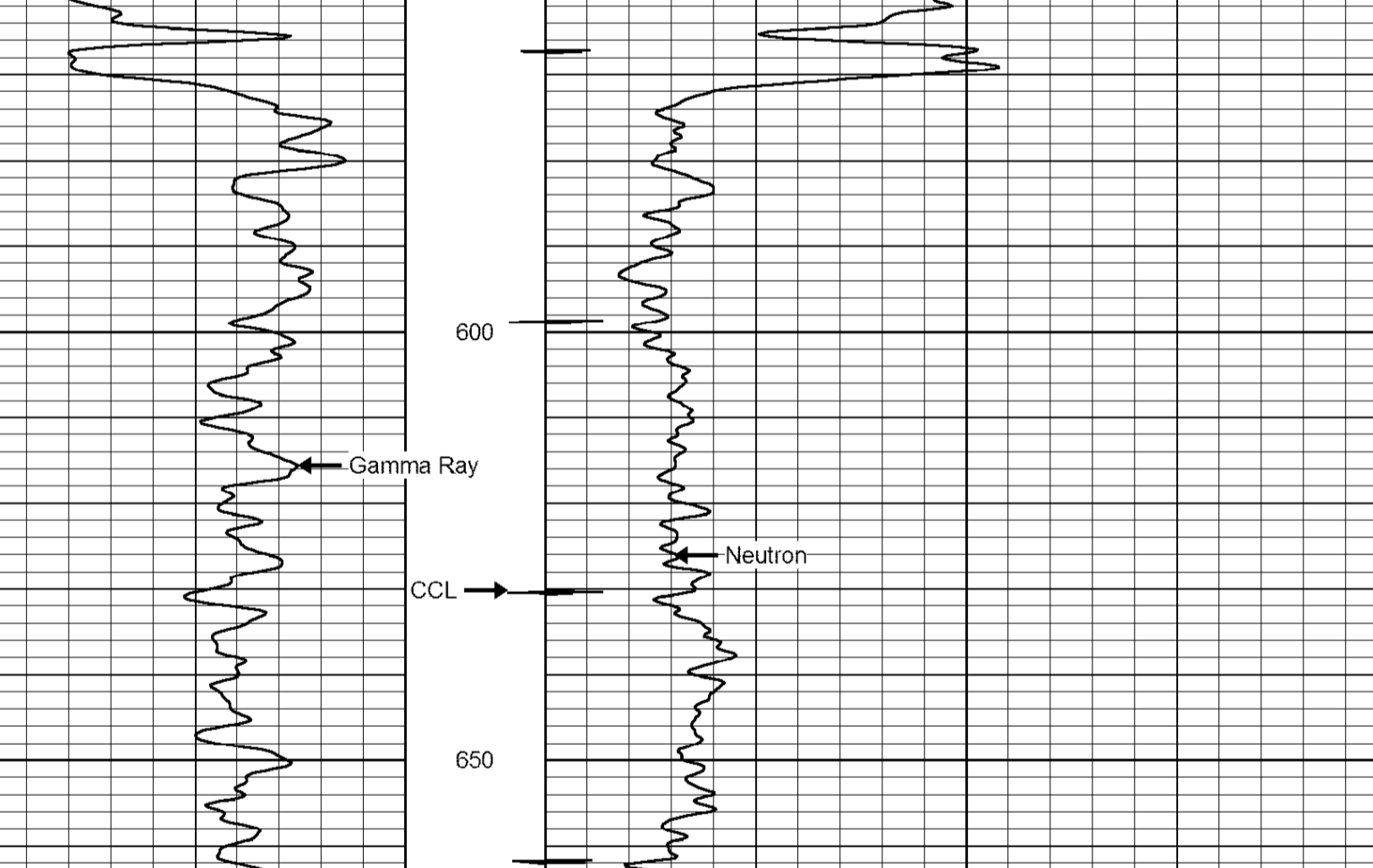
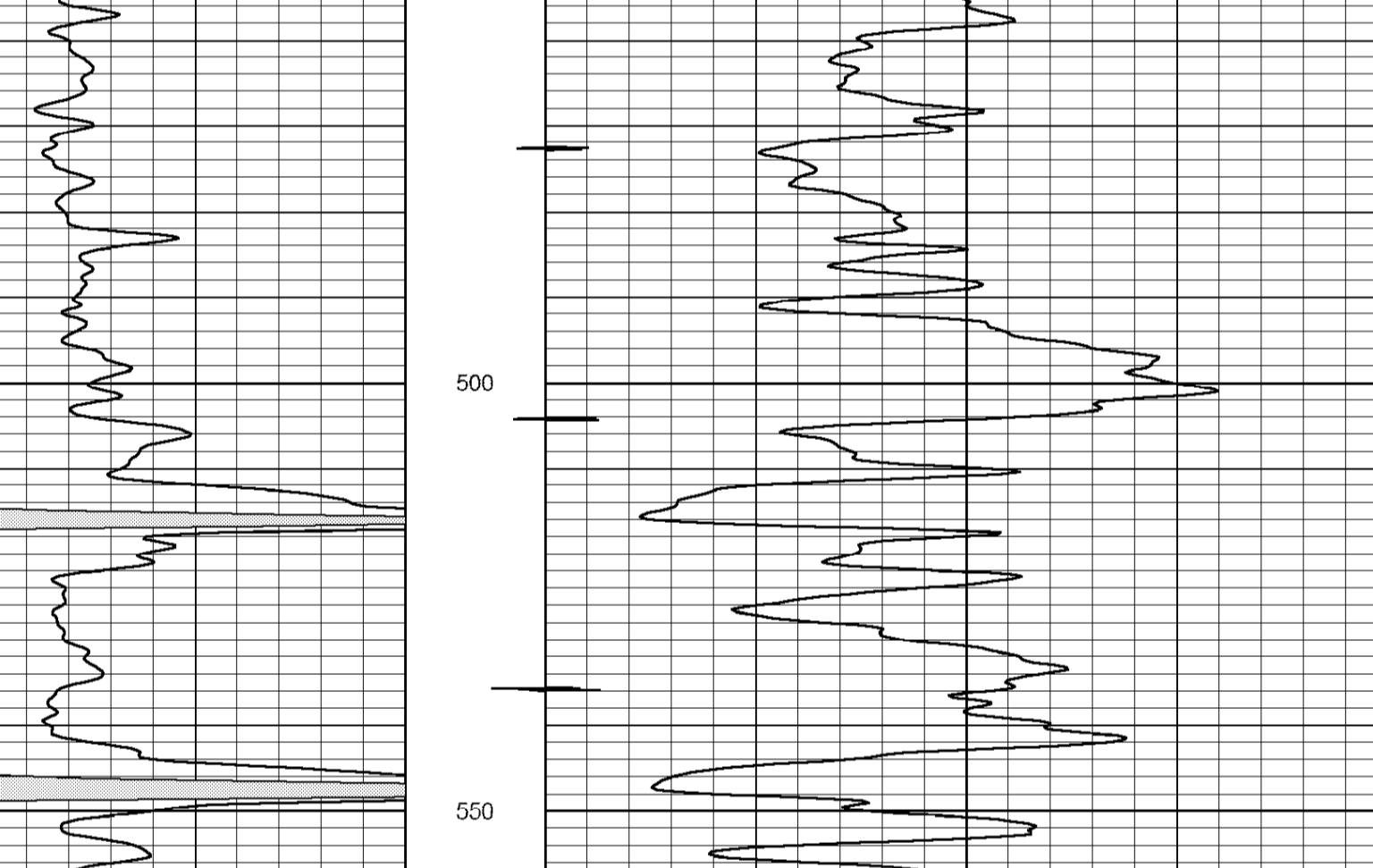
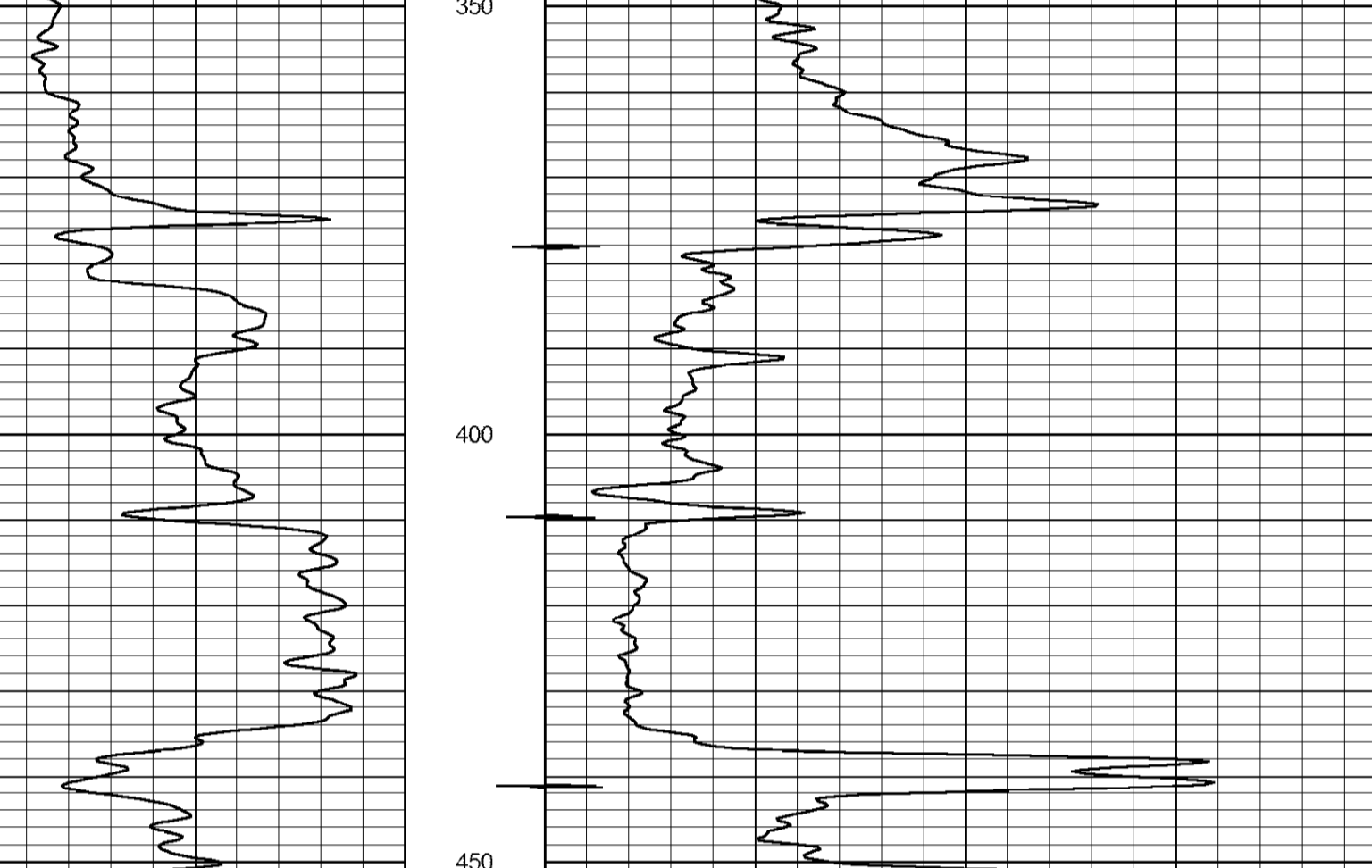
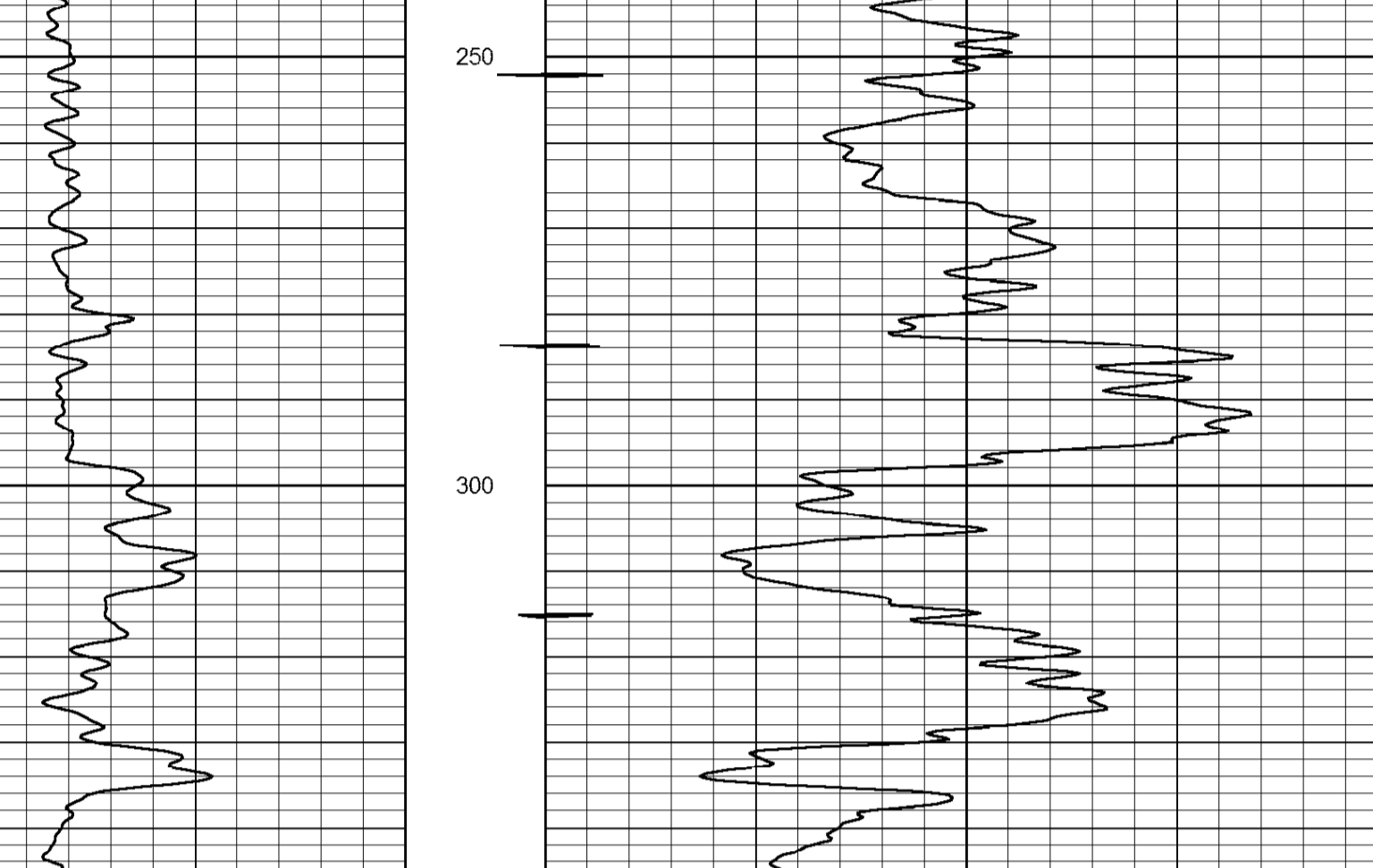
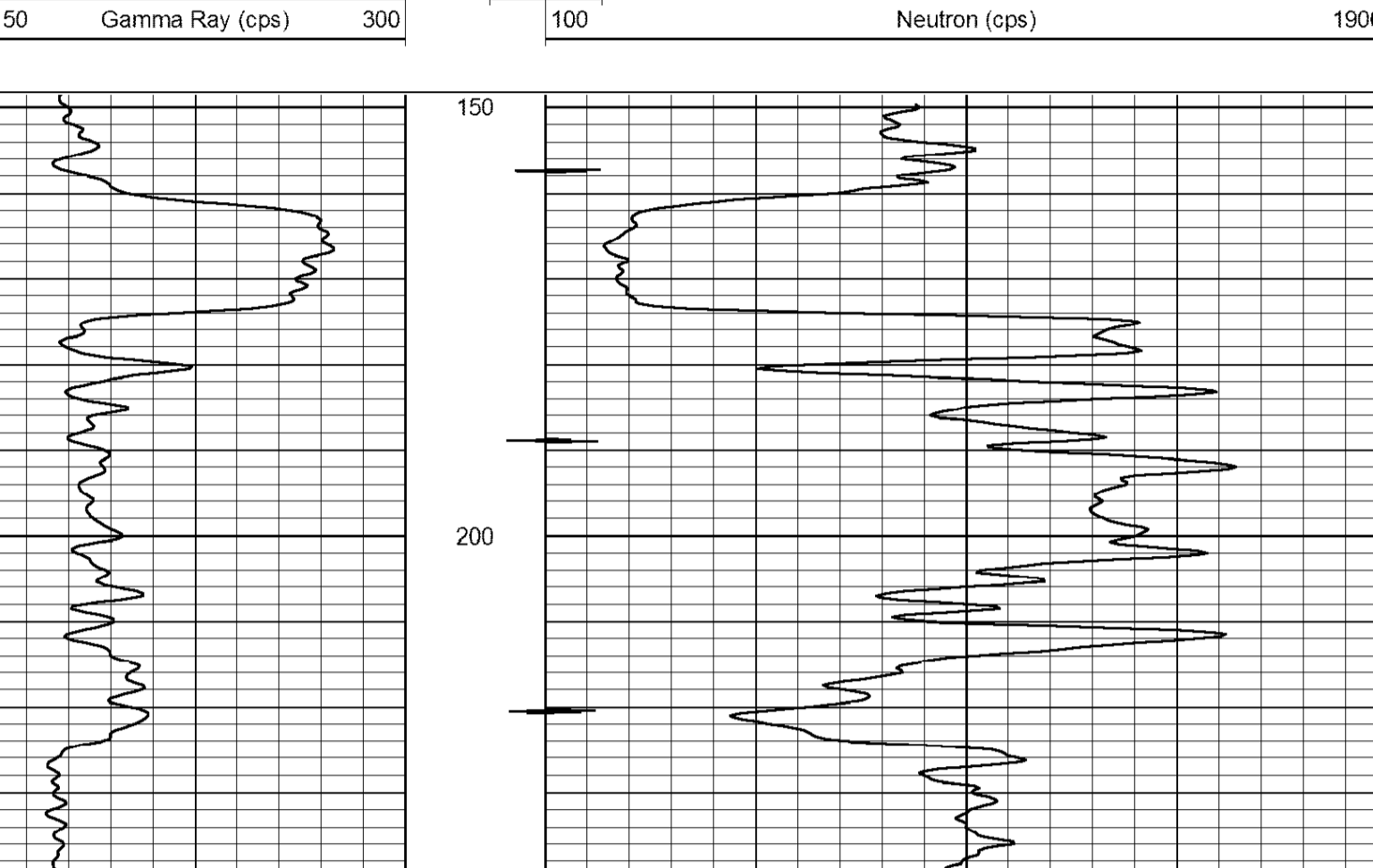
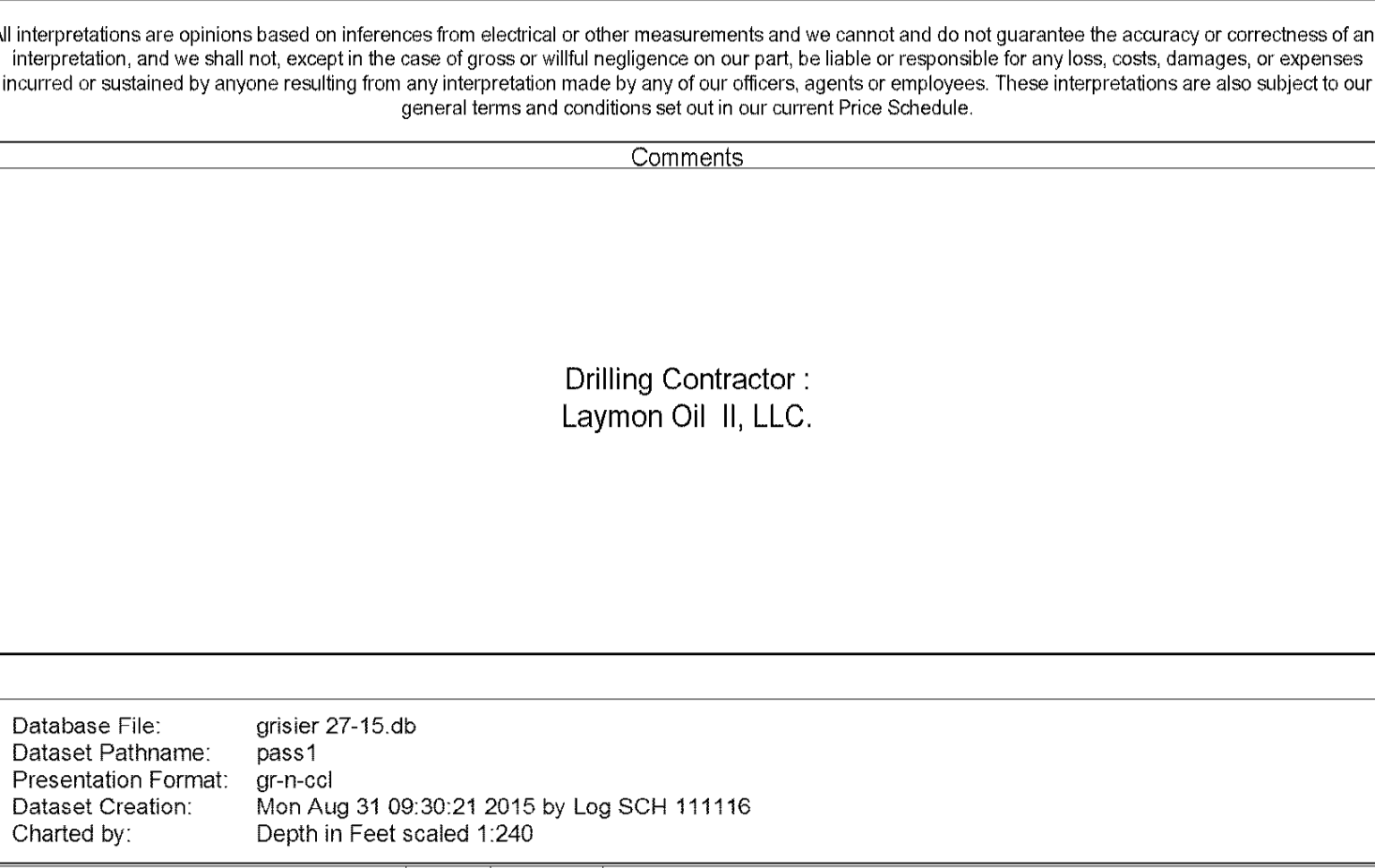
TO

FROM

SIZE

WGT.

FROM



10-21-2015
 Perforated Interval
 918.0 - 924.0 13 Perfs.
 2" DML RTG

10-21-2015
 Perforated Interval
 962.0 - 978.0 34 Perfs.
 2" DML RTG

<<< Fold Here >>>

All interpretations are opinions based on inferences from electrical or other measurements and we cannot and do not guarantee the accuracy or correctness of any interpretation, and we shall not, except in the case of gross or willful negligence on our part, be liable or responsible for any loss, costs, damages, or expenses incurred or sustained by anyone resulting from any interpretation made by any of our officers, agents or employees. These interpretations are also subject to our general terms and conditions set out in our current Price Schedule.

Comments

Drilling Contractor :
 Laymon Oil II, LLC.

Database File: griser 27-15.db
 Dataset Pathname: pass1
 Presentation Format: gr-n-ccl
 Dataset Creation: Mon Aug 31 09:30:21 2015 by Log SCH 111116
 Charted by: Depth in Feet scaled 1.240