



WIRELINE SERVICES, INC.  
CHANUTE, KANSAS

**GAMMA RAY  
NEUTRON  
COMPLETION LOG**

Company	LAYMON OIL II, LLC	Location:	SEC 8 TWP 25 R 16E	Other Services	
Well	H HORSCH #13-20	AP#	15-207-29776-00-00		
Field	OWL CREEK	1140' FSL, 217' FEL			
County	WOODSON	NE, NW, SW, SE			
State	KS				
Permanent Datum	SEC 8 TWP 25 R 16E				
Log Measured From	TOP OF CASING				
Drilling Measured From	TOP OF CASING				
Date	12-15-2020				
Run Number	1 MW				
Depth Driller	1020				
Depth Logger	1009.8				
Top Log Interval	0				
Bottom Logged Interval	1009.8				
Fluid Level	FULL				
Type Fluid	WATER				
Production Change	2 7/8" @ TD				
Max. Recorded Temp.					
Estimated Cement Top	SURF				
Calculated Cement Top					
Amount 3 Type Cement					
Amount 3 Type Admix					
Drilling Contractor					
Equipment Number	109				
Location	THAD TRAHAN				
Recorded By	LUKE CALLENBRE				

<<< Fold Here >>>

All interpretations are opinions based on inferences from electrical or other measurements and we cannot and do not guarantee the accuracy or correctness of any interpretation, and we shall not, except in the case of gross or willful negligence on our part, be liable or responsible for any loss, costs, damages, or expenses incurred or sustained by anyone resulting from any interpretation made by any of our officers, agents or employees. These interpretations are also subject to our general terms and conditions set out in our current Price Schedule.

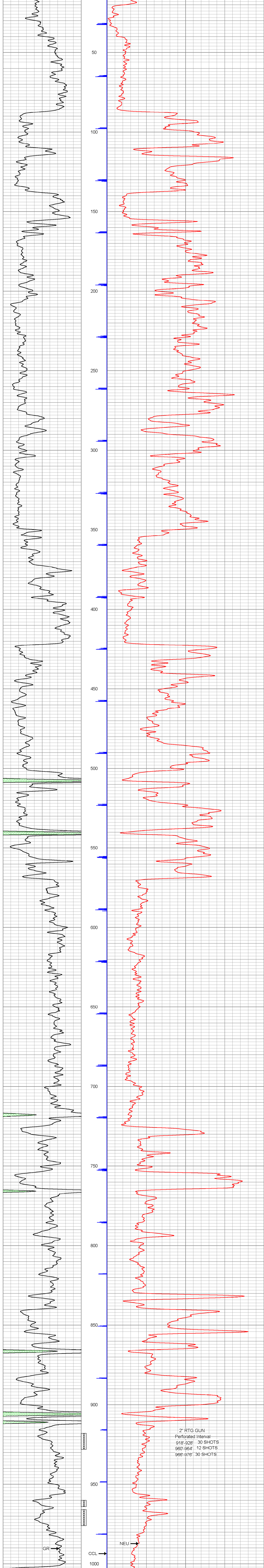
Comments

Sensor	Offset (ft)	Schematic	Description	Len (ft)	OD (in)	Wt (lb)
GR	7.59		GR-TITAN_169 (TIT169_001) Titan 1 11/16" Gamma Ray	4.75	1.69	20.00
CCL	5.05		CCL-TITAN_169 (TIT169) Titan 1 11/16" Logging CCL	1.83	1.69	7.50
NEU	0.63		NEU-TITAN (TIT801) TITAN 1 11/16" Neutron	4.33	1.69	25.00

Dataset: h horsch #13-20.db: field/well/run1/pass1  
 Total Length: 10.92 ft  
 Total Weight: 52.50 lb  
 O.D.: 1.69 in

Database File: h horsch #13-20.db  
 Dataset Pathname: pass1  
 Presentation Format: gr-n-ccl  
 Dataset Creation: Tue Dec 15 13:09:19 2020 by Log Std Casedhole 09061  
 Charted by: Depth in Feet scaled 1:240

150	gr	300	3	CCL	0.05	200	NEU (cps)	1900
0	GR	150						



150	gr	300	3	CCL	0.05	200	NEU (cps)	1900
0	GR	150						