



**GAMMA RAY
NEUTRON
COMPLETION LOG**

| | | | | | | | | | |
|----------------------|---------------------------------|------------------------|------------------|---------------------|-------------|----------------------|---------------|------------------------|-------------|
| Company | LAYMON OIL II, LLC | Well | F TOEDMAN #24-20 | Field | OWL CREEK | County | WOODSON | State | KS |
| Location: | 2220 FSL 1159 FEL SVAW/NEESE | Permian Datum | SEC 8 | TWP 25 | RGE 16 | Log Measured From | TOP OF CASING | Elevation | 1011.1 |
| API #: | 15-207-29779-00-00 | Drilling Measured From | TOP OF CASING | Other Services | | | | | |
| Date | 12-14-2020 | Run Number | 1 NW | Depth Driller | 1011.1 | Top Log Interval | 0 | Bottom Logged Interval | 1011.1 |
| Fluid Level | FULL | Type Fluid | WATER | Production Casing | 2 7/8" @ TD | Estimated Cement Top | SURF | Calculated Cement Top | |
| Amount & Type Cement | | Amount & Type Admix | | Drilling Contractor | 109 | Equipment Number | | Location | THAD TRAHAN |
| Recorded By | LUKE GALEMORE | Witnessed By | | | | | | | |

<<< Fold Here >>>

All interpretations are opinions based on inferences from electrical or other measurements and we cannot and do not guarantee the accuracy or correctness of any interpretation, and we shall not, except in the case of gross or willful negligence on our part, be liable or responsible for any loss, costs, damages, or expenses incurred or sustained by anyone resulting from any interpretation made by any of our officers, agents or employees. These interpretations are also subject to our general terms and conditions set out in our current Price Schedule.

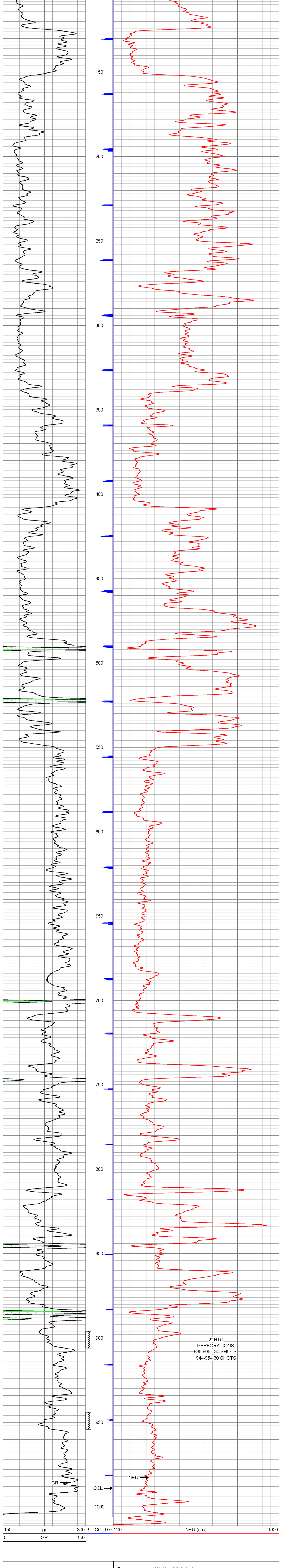
Comments

| Sensor | Offset (ft) | Schematic | Description | Len (ft) | OD (in) | Wt (lb) |
|--------|-------------|-----------|---|----------|---------|---------|
| GR | 7.59 | | GR-TITAN_169 (TIT169_001) Titan 1 11/16" Gamma Ray | 4.75 | 1.69 | 20.00 |
| CCL | 5.05 | | CCL-TITAN_169 (TIT169) Titan 1 11/16" Logging CCL | 1.83 | 1.69 | 7.50 |
| NEU | 0.63 | | NEU-TITAN (TIT801) TITAN 1 11/16" Neutron | 4.33 | 1.69 | 25.00 |

Dataset: f toedman #24-20 db; field/well/run1/pass1
Total Length: 10.92 ft
Total Weight: 52.50 lb
O.D.: 1.69 in

Database File: f toedman #24-20.db
Dataset Pathname: pass1
Presentation Format: gr-n-ccl
Dataset Creation: Mon Dec 14 16:18:19 2020 by Log Std Casedhole 09061
Charted by: Depth in Feet scaled 1.240

150 gr 300 3 CCL.05 200 NEU (cps) 1900



150 gr 300 3 CCL.05 200 NEU (cps) 1900