



MIDWEST WIRELINE

MICRORESISTIVITY

Company Brito Oil Company, Inc.

Well TLM #1-15

Field

County Rawlins

State Kansas

Location: API #: 15-153-21320-00-00

740 FSL & 1160 FWL

SEC 15 TWP 4S RGE 36W

Other Services
CNL/CDL
DIL

Permanent Datum Ground Level Elevation 3345
Log Measured From Kelly Bushing
Drilling Measured From Kelly Bushing

Elevation
K.B. 3350
D.F.
G.L. 3345

Date 9/27/2023

Run Number One

Depth Driller 4950

Depth Logger 4951

Bottom Logged Interval 4950

Top Log Interval 3800

Casing Driller 8,625 @ 386

Casing Logger 386

Bit Size 7.875

Type Fluid in Hole Chemical

Salinity, ppm CL 3000

Density / Viscosity 9.4 61

pH / Fluid Loss 10.0 8.8

Source of Sample Flowline

Rm @ Meas. Temp 0.80 @ 80

Rmt @ Meas. Temp 0.60 @ 80

Rmc @ Meas. Temp 1.08 @ 80

Source of Rmf / Rmc Charts

Rm @ BHT 0.46 @ 126

Operating Rig Time 3 Hours

Max Rec. Temp. F 126

Equipment Number P-24

Location Hays

Recorded By D. Schmidt

Witnessed By Saman Sharifaie

<<< Fold Here >>>

All interpretations are opinions based on inferences from electrical or other measurements and Midwest Wireline LLC cannot and does not guarantee the accuracy or correctness of any interpretation, and Midwest Wireline LLC will not be liable or responsible for any loss, costs, damages, or expenses incurred or sustained by anyone resulting from any interpretation made by any of our officers, agents or employees.

Comments

N/A DENOTES NOT AVAILABLE OR NON-APPLICABLE.

McDonald,
South to K Rd,
1 East, 1 South, 1/2 East,
North into

Log Measured From: Kelly Bushing 5 Ft. Above Permanent Datum

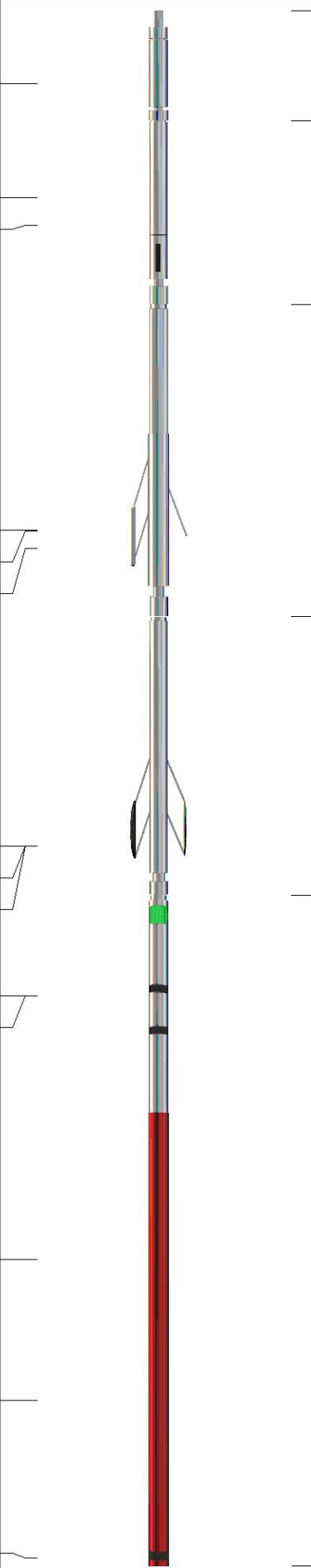
THANK YOU FOR USING MIDWEST WIRELINE LLC
785-625-3858

Your Midwest Wireline Crew

Engineer: D. Schmidt
Operator:
Operator:
Operator:

This Log Record Was Witnessed By

Primary Witness: Saman Sharifaie
Secondary Witness:
Secondary Witness:
Secondary Witness:

Sensor	Offset (ft)	Schematic	Description	Length (ft)	O.D. (in)	Weight (lb)
GR	40.33		GR-M&W (102)	3.00	3.50	50.00
CNLSC CNSSC	37.23 36.48		CNT-M&W (207)	5.00	3.50	100.00
LSD DCAL SSD	28.18 28.17 27.68		CDL-M&W (307-11)	8.50	4.00	250.00
MCAL MI MN	19.58 19.58 19.58		ML-PSIML (401)	7.58	4.00	65.00
RLL3F RLL3	15.50 15.50					
CILD	8.33		DIL-M&W (507)	18.25	3.50	220.00
CILM	4.50					
SP	0.20					

Dataset: brito_tlm 1-15.db: field/well/stkml/pass4.1
 Total length: 42.33 ft
 Total weight: 685.00 lb
 O.D.: 4.00 in

Log Variables

DatabaseC:\ProgramData\Warrior\Data\brito_tlm 1-15.db
Dataset field/well/stkml/pass4.1/_vars_

Top - Bottom

BOREID in 7.875	BOTTEMP degF 126	CASEOD in 5.5	CASETHCK in 0	FLUIDDEN g/cc 1	MATRXDEN g/cc 2.71	NPORSEL Limestone	PERFS No
SNDERR mmho/m 0	SNDERRM mmho/m 0	SPSHIFT mV 440	SRFTEMP degF 60	SZCOR Off	TDEPTH ft 4951		

Variable Description

BOREID : Borehole I.D.
BOTTEMP : Bottom Hole Temperature
CASEOD : Casing O.D.
CASETHCK : Casing Thickness
FLUIDDEN : Fluid Density
MATRXDEN : Matrix Density
NPORSEL : Neutron Porosity Curve Select

PERFS : Perforation Flag
SNDERR : Deep Sonde Error Correction
SNDERRM : Medium Sonde Error Correction
SPSHIFT : S.P. Baseline Offset
SRFTEMP : Surface Temperature
SZCOR : CN Size Cor. ?
TDEPTH : Total Depth



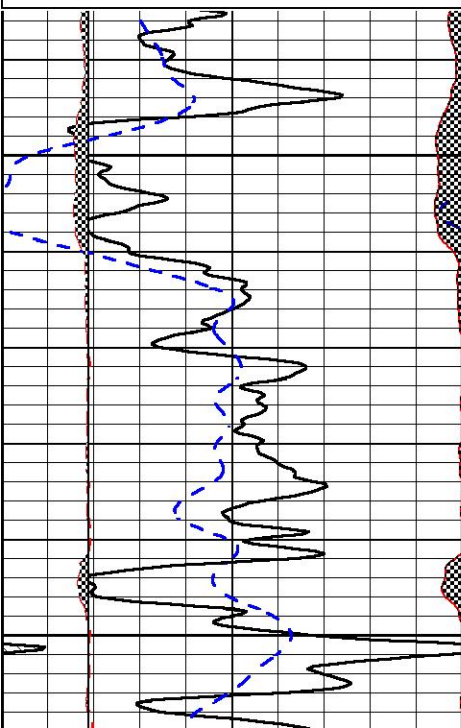
DETAIL SECTION

MAIN PASS

Database File brito_tlm 1-15.db
Dataset Pathname stkml/pass4.1
Presentation Format _micro
Dataset Creation Wed Sep 27 06:16:13 2023
Charted by Depth in Feet scaled 1:240

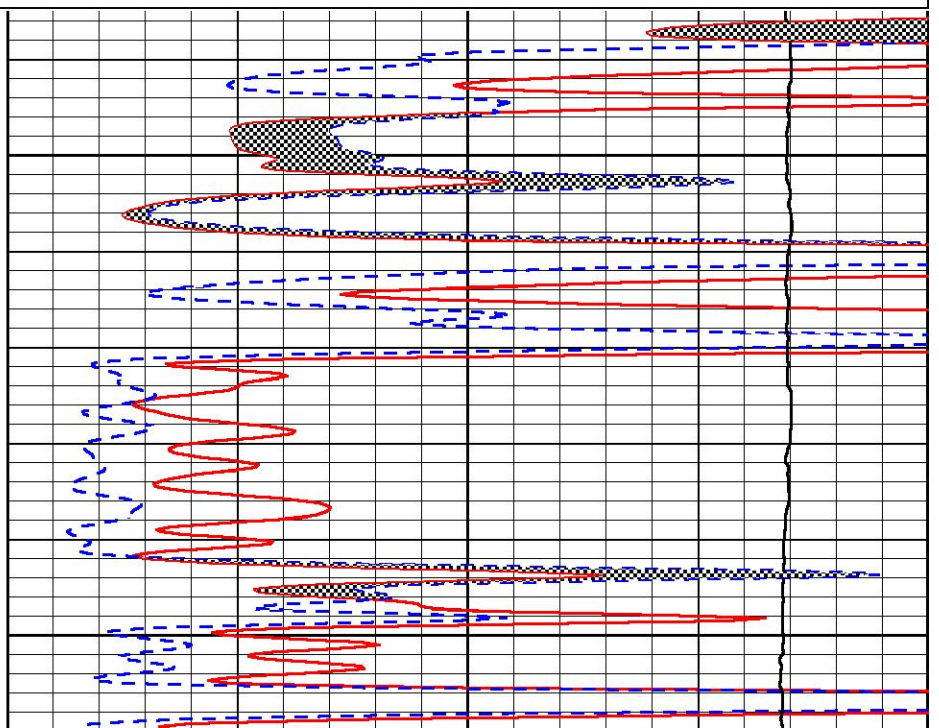
0	Gamma Ray (GAPI)	150
6	Caliper (in)	16
2.875	mcal (in)	7.875
-200	sp (mV)	0

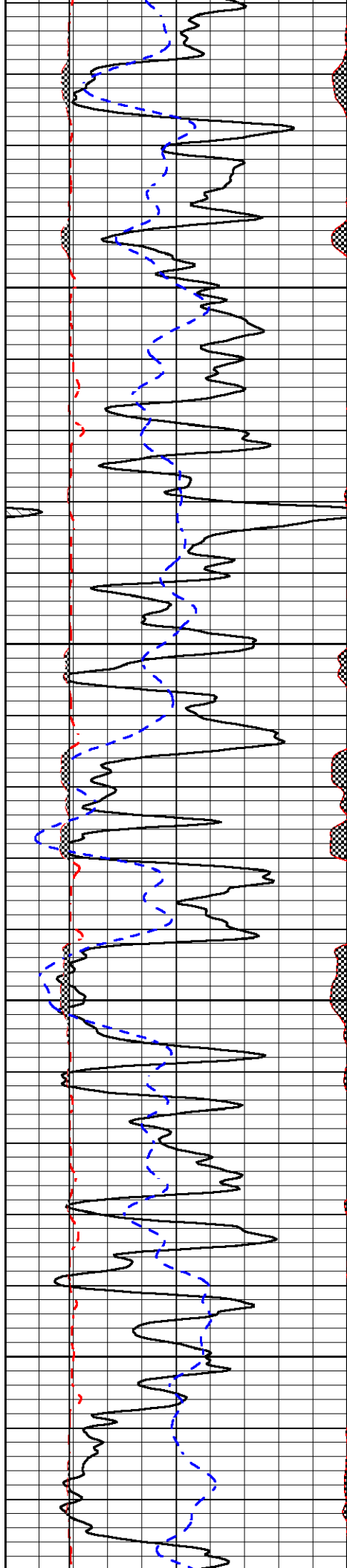
0	Micro Inverse 1 X 1 (Ohm-m)	40
0	Micro Normal 2" (Ohm-m)	40
10000	Line Weight (lb)	0



3800

3850



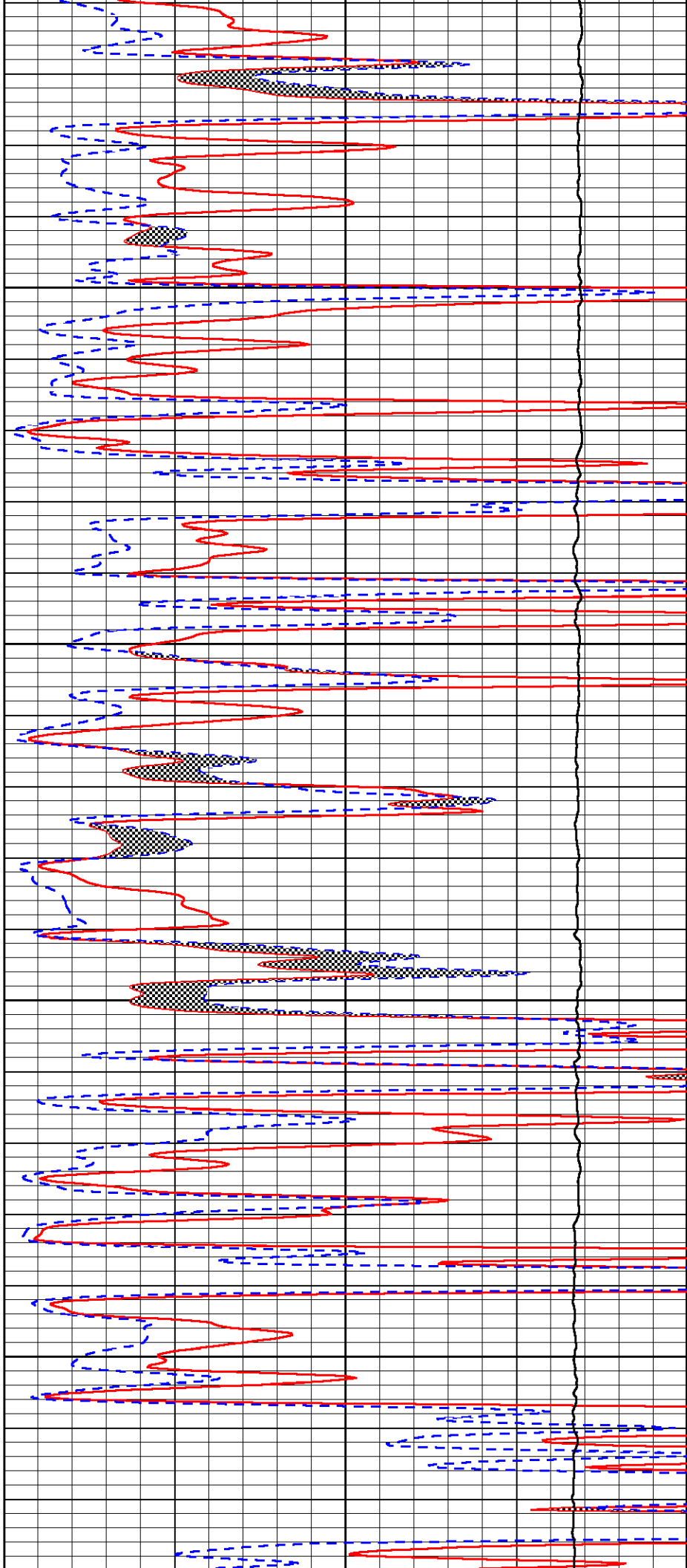


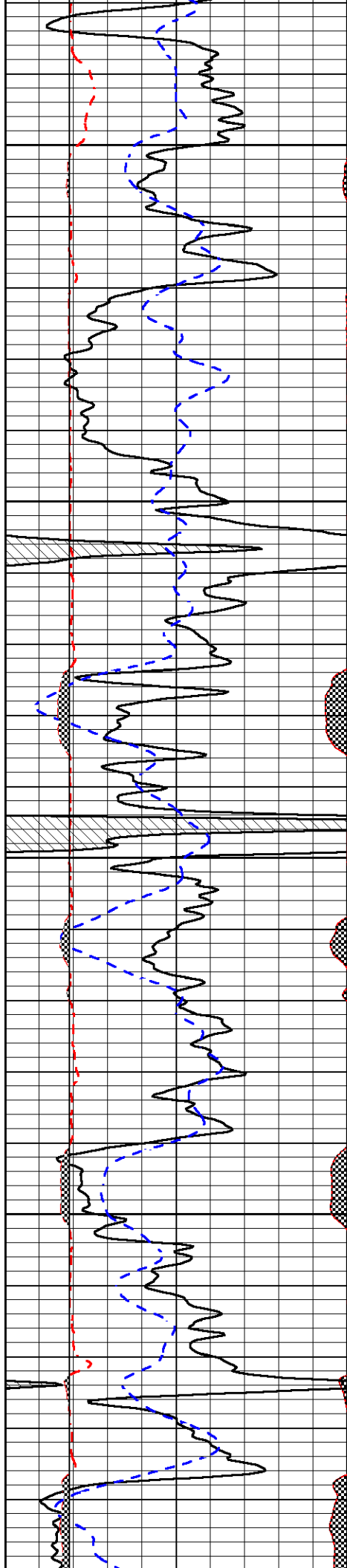
3900

3950

4000

4050





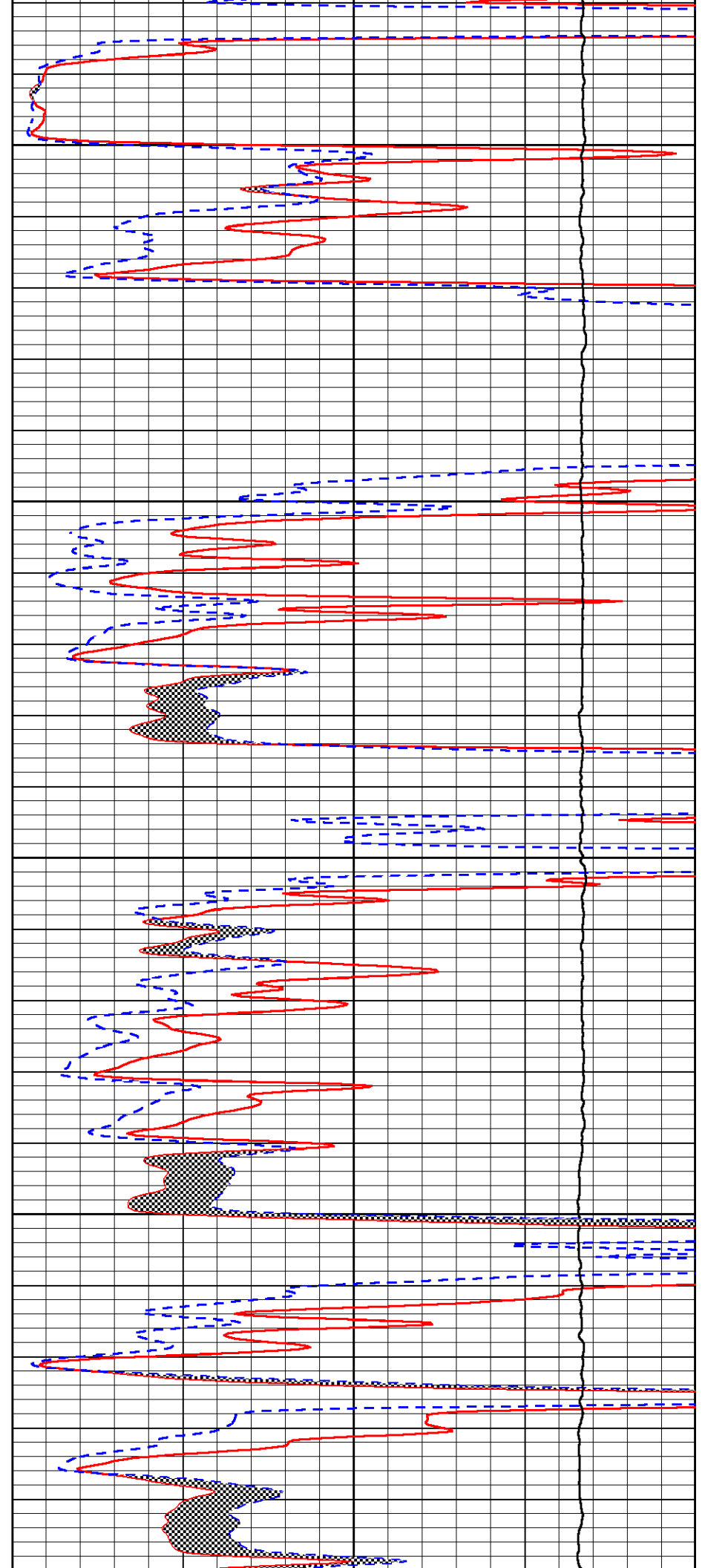
4100

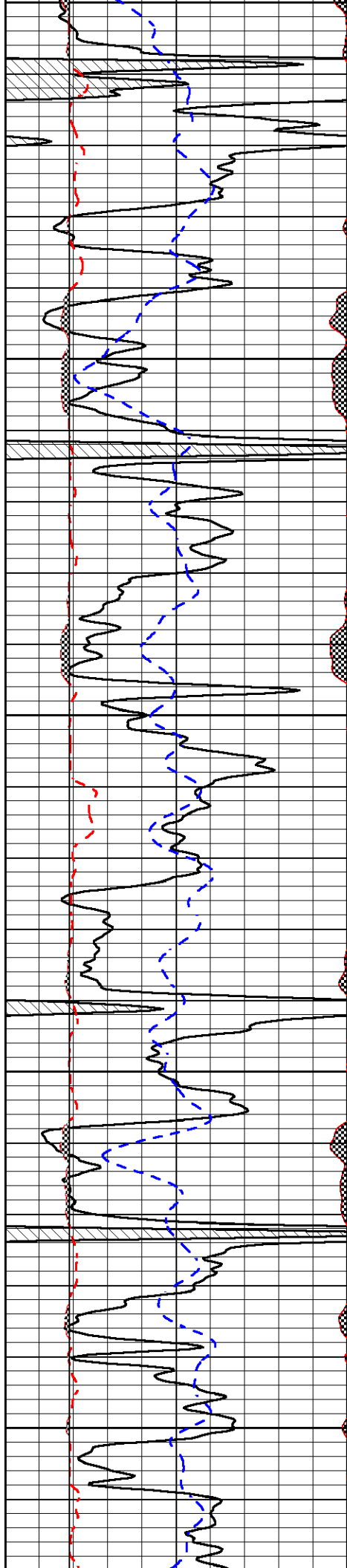
4150

4200

4250

4300





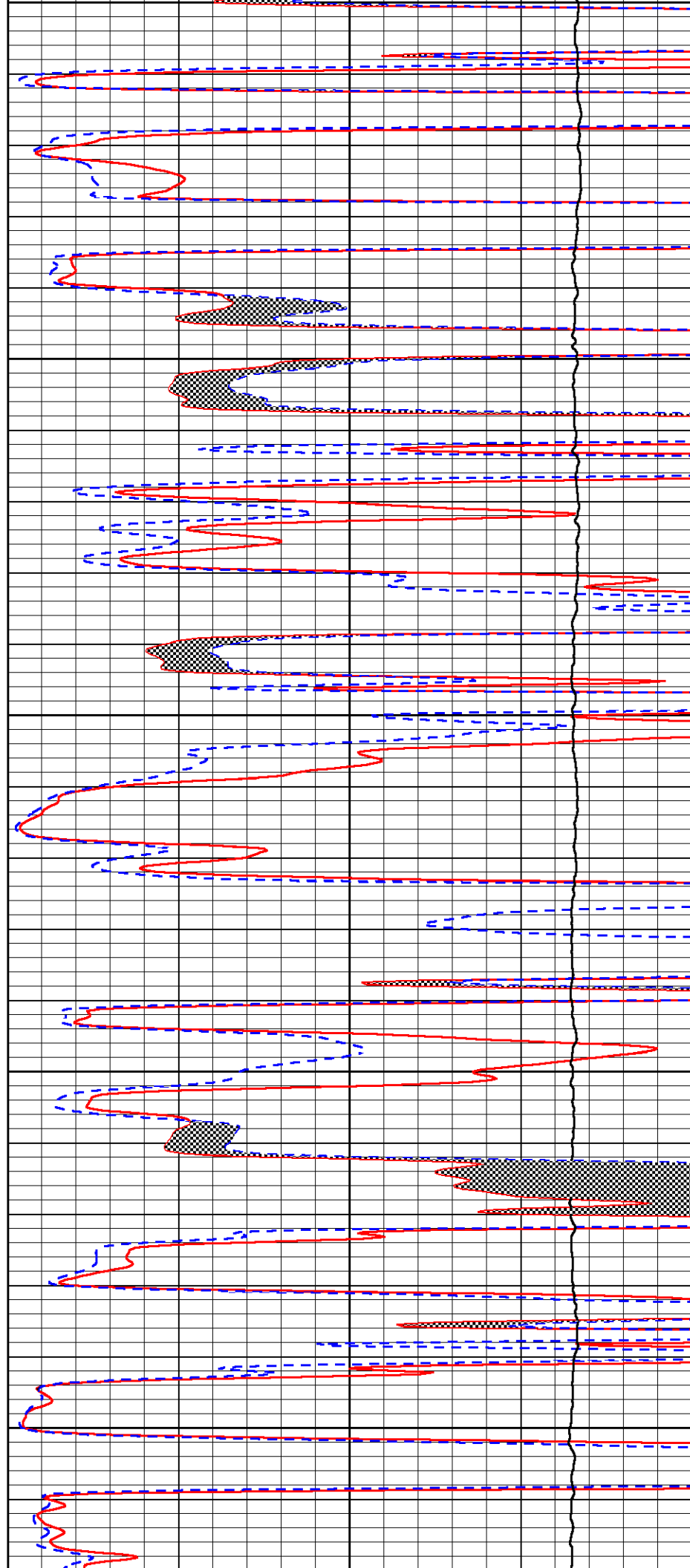
4300

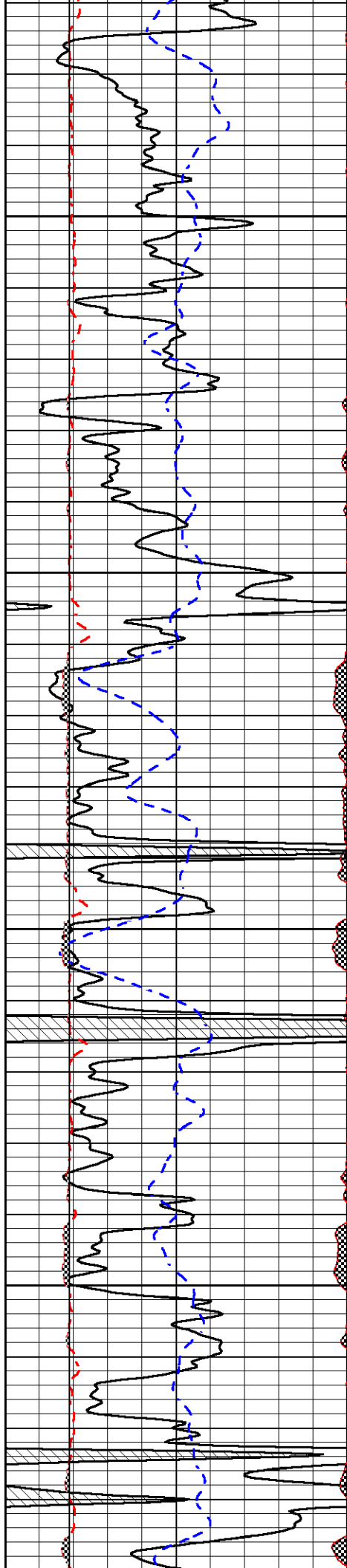
4350

4400

4450

4500



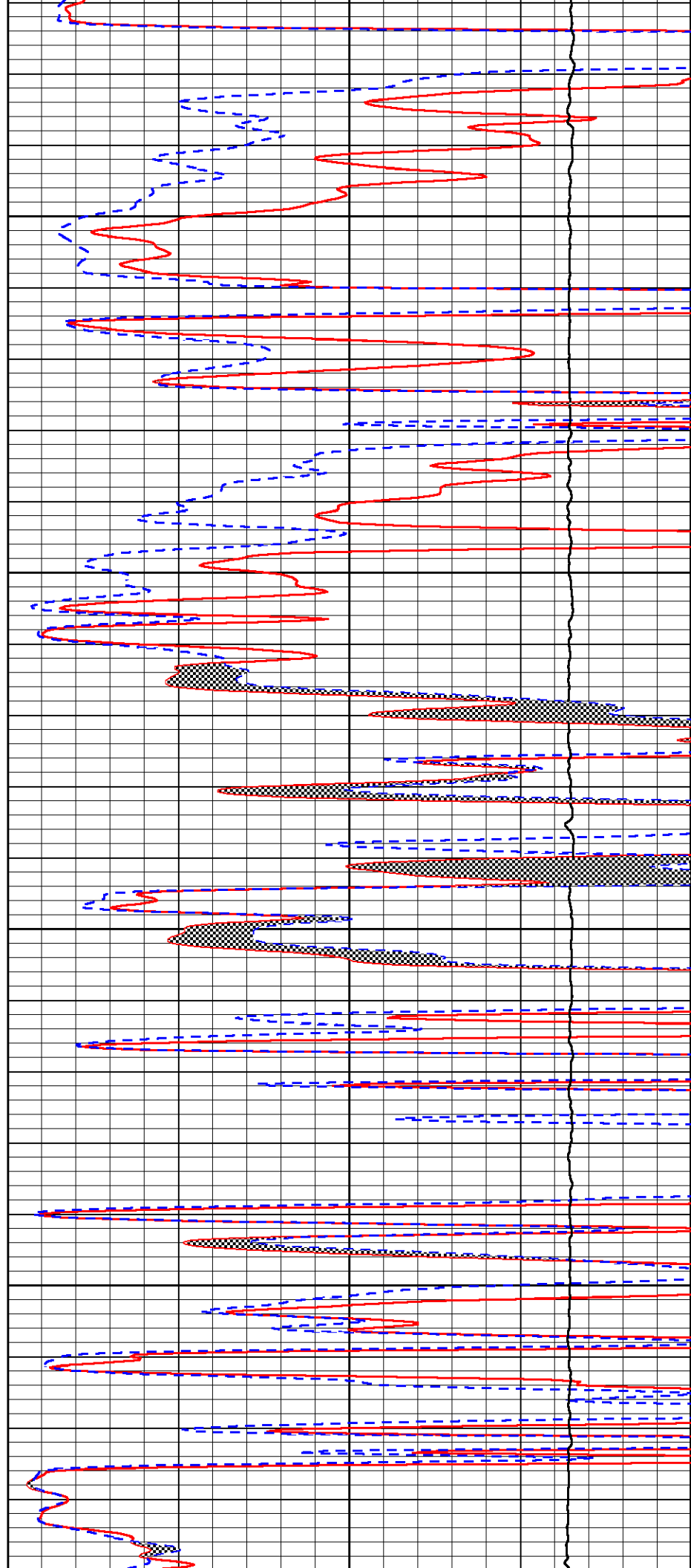


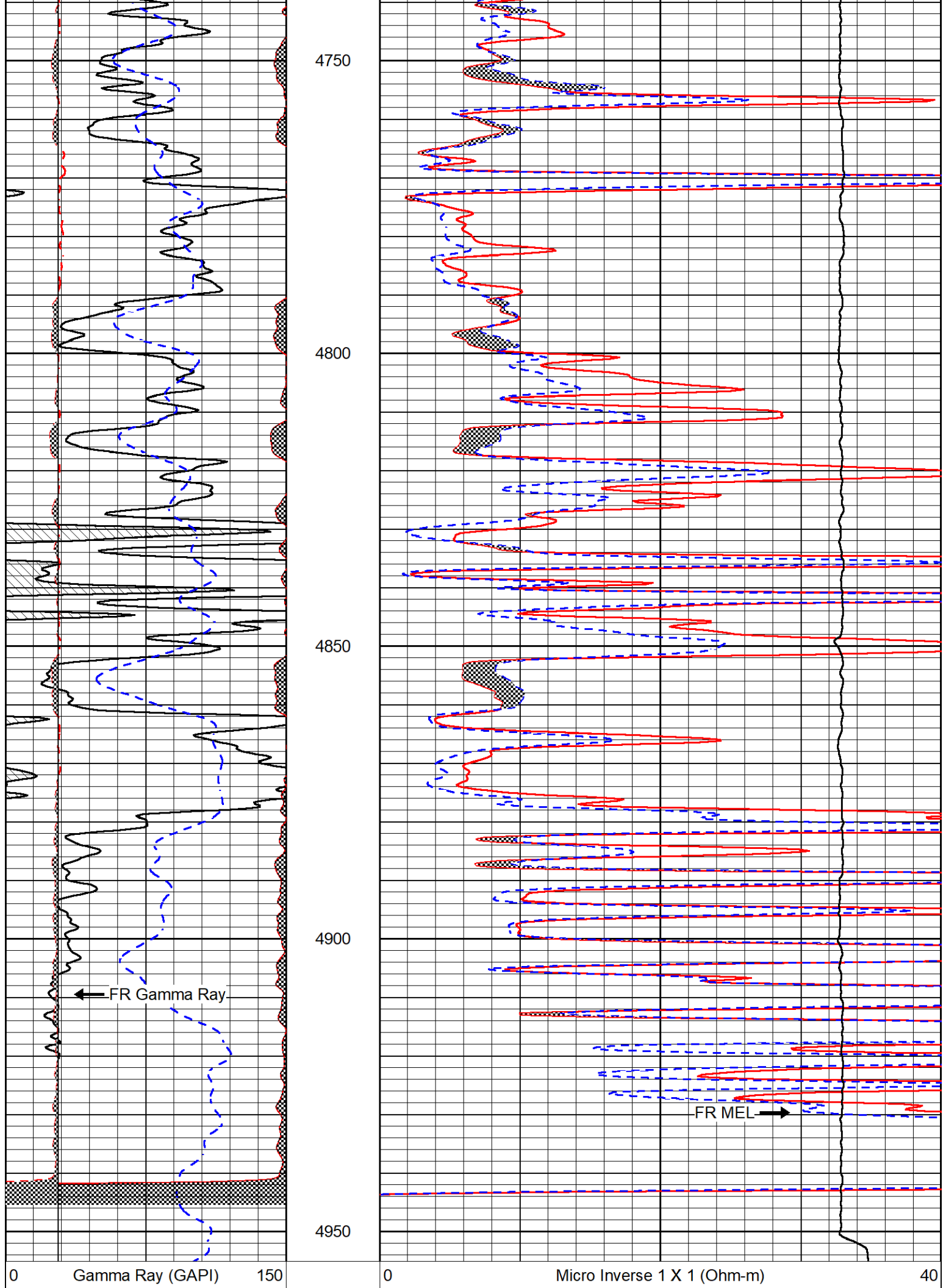
4550

4600

4650

4700





6	Caliper (in)	16
2.875	mcal (in)	7.875
-200	sp (mV)	0

0	Micro Normal 2" (Ohm-m)	40
10000	Line Weight (lb)	0



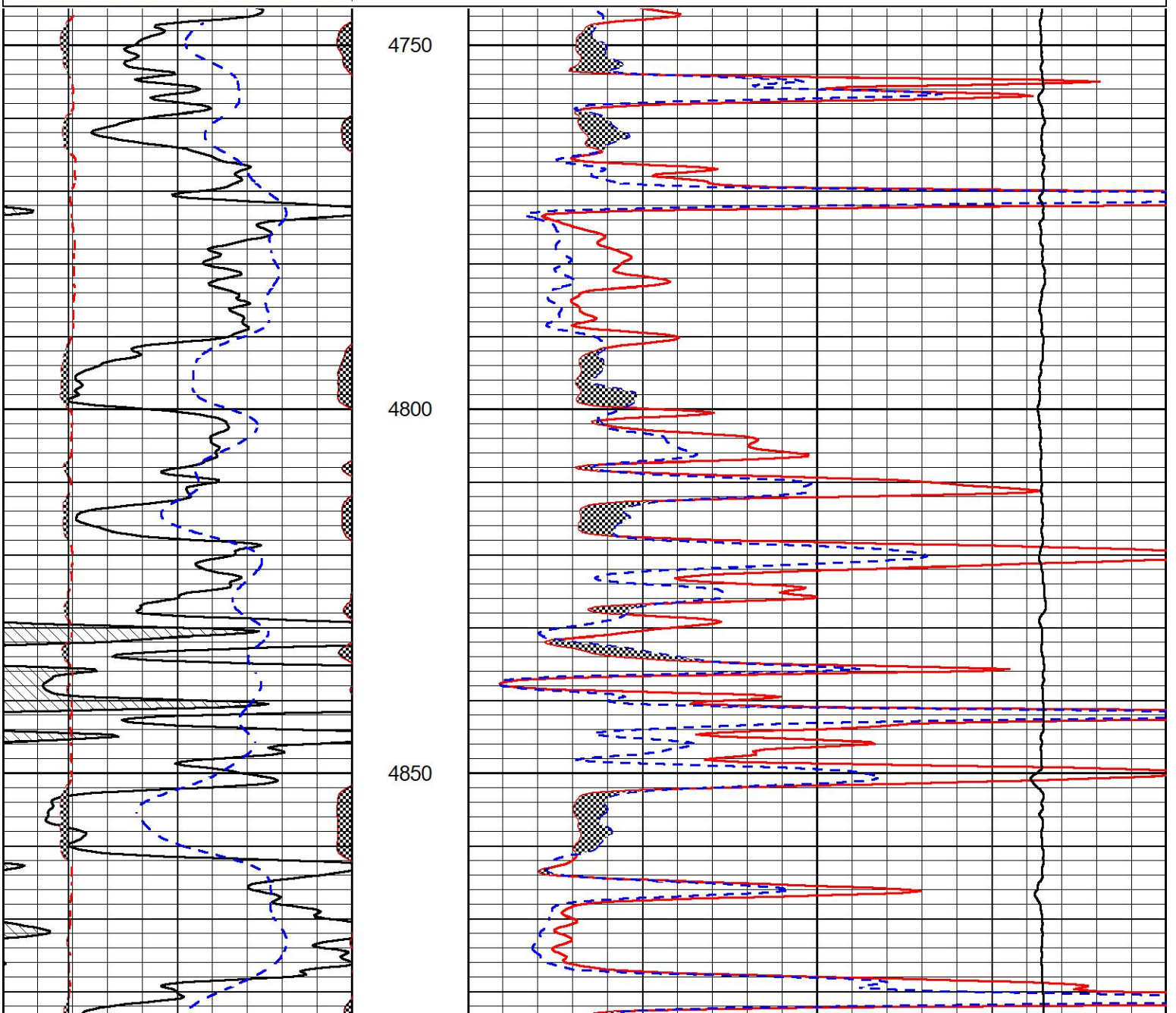
REPEAT SECTION

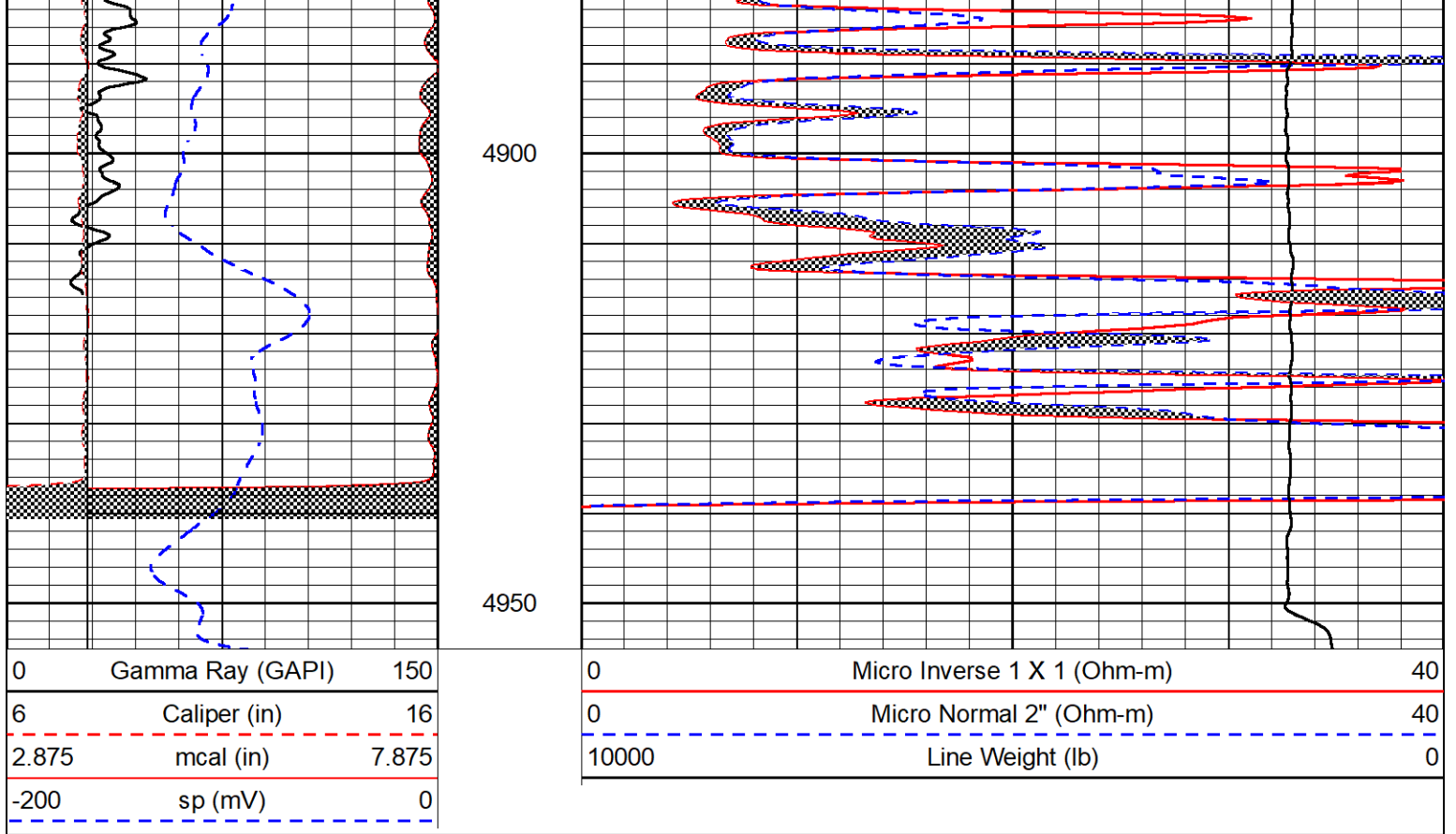
REPEAT PASS

Database File brito_tlm 1-15.db
 Dataset Pathname stkml/pass2.1
 Presentation Format _micro
 Dataset Creation Wed Sep 27 05:26:04 2023
 Charted by Depth in Feet scaled 1:240

0	Gamma Ray (GAPI)	150
6	Caliper (in)	16
2.875	mcal (in)	7.875
-200	sp (mV)	0

0	Micro Inverse 1 X 1 (Ohm-m)	40
0	Micro Normal 2" (Ohm-m)	40
10000	Line Weight (lb)	0





Calibration Report

Database File brito_tlm 1-15.db
 Dataset Pathname stkml/pass4.1
 Dataset Creation Wed Sep 27 06:16:13 2023

Dual Induction Calibration Report

Serial-Model: 507-M&W
 Surface Cal Performed:

Loop:	Readings		References			Results	
	Air	Loop	Air	Loop		m	b
Deep	68.570	638.100	0.000	255.800	mmho/m	0.500	-37.000
Medium	184.288	716.191	0.000	255.800	mmho/m	0.430	-75.000

Microlog Calibration Report

Serial-Model: 401-PSIML
 Performed: Mon Sep 25 22:02:56 2023

	Readings		References			Results	
	Zero	Cal	Zero	Cal		m	b
Normal	0.0000	1.0000	0.0000	1.0000	Ohm-m	22000.0000	-3.1000
Inverse	0.0000	1.0000	0.0000	1.0000	Ohm-m	27000.0000	-4.0000
Caliper	1.0052	1.0858	5.0000	16.5000	in	100.0000	-94.8500

Compensated Density Calibration Report

Serial-Model: 307-11-M&W
 Source / Verifier: 20762B / 2ci
 Master Calibration Performed: Tue Jun 6 21:48:20 2023

Before Survey Verification Performed:
After Survey Verification Performed:

Master Calibration

	Density		Far Detector	Near Detector	
Magnesium	1.755	g/cc	3689.70	4749.82	cps
Aluminum	2.580	g/cc	822.19	3221.38	cps
Spine Angle = 75.50			Density/Spine Ratio = 0.532		
	Size		Reading		
Small Ring	6.00	in	1.16		
Large Ring	18.00	in	1.01		

Compensated Neutron Calibration Report

Serial Number: 207
Tool Model: M&W

CALIBRATION

Detector	Readings	Target	Normalization
Short Space	6240.00 cps	1000.00 cps	1.6025
Long Space	460.00 cps	1000.00 cps	1.9500

PRE-SURVEY VERIFICATION

	Detector	Readings	Measured	Target
1)	Short Space	cps		
	Long Space	cps	pu	pu
2)	Short Space	cps		
	Long Space	cps	pu	
3)	Short Space	cps		
	Long Space	cps	pu	

POST-SURVEY VERIFICATION

	Detector	Readings	Measured	Target
1)	Short Space	cps		
	Long Space	cps	pu	pu
2)	Short Space	cps		
	Long Space	cps	pu	pu
3)	Short Space	cps		
	Long Space	cps	pu	pu

Gamma Ray Calibration Report

Serial Number: 102
Tool Model: M&W
Performed: Mon Sep 25 22:02:33 2023

Calibrator Value: 1.0 GAPI

Background Reading: 0.0 cps
Calibrator Reading: 1.0 cps

Sensitivity: 0.5250 GAPI/cps



MIDWEST WIRELINE

Company	Brito Oil Company, Inc.
Well	TLM #1-15
Field	
County	Rawlins
State	Kansas