



MIDWEST WIRELINE

DUAL INDUCTION

Company Brito Oil Company, Inc.

Well TLM #1-15

Field

County Rawlins

State Kansas

Location:

740 FSL & 1160 FWL

SEC 15 TWP 4S RGE 36W

API #: 15-153-21320-00-00

Other Services
CNL/CDL
MEL

Permanent Datum Ground Level Elevation 3345
Log Measured From Kelly Bushing
Drilling Measured From Kelly Bushing

Elevation
K.B. 3350
D.F.
G.L. 3345

Date	9/27/2023
Run Number	One
Depth Driller	4950
Depth Logger	4951
Bottom Logged Interval	4950
Top Log Interval	350
Casing Driller	8.625 @ 386
Casing Logger	386
Bit Size	7.875
Type Fluid in Hole	Chemical
Salinity, ppm CL	3000
Density / Viscosity	9.4 61
pH / Fluid Loss	10.0 8.8
Source of Sample	Flowline
Rm @ Meas. Temp	0.80 @ 80
Rmt @ Meas. Temp	0.60 @ 80
Rmc @ Meas. Temp	1.08 @ 80
Source of Rmf / Rmc	Charts
Rm @ BHT	0.46 @ 126
Operating Rig Time	3 Hours
Max Rec. Temp. F	126
Equipment Number	P-24
Location	Hays
Recorded By	D. Schmidt
Witnessed By	Saman Sharifaie

<<< Fold Here >>>

All interpretations are opinions based on inferences from electrical or other measurements and Midwest Wireline LLC cannot and does not guarantee the accuracy or correctness of any interpretation, and Midwest Wireline LLC will not be liable or responsible for any loss, costs, damages, or expenses incurred or sustained by anyone resulting from any interpretation made by any of our officers, agents or employees.

Comments

N/A DENOTES NOT AVAILABLE OR NON-APPLICABLE.

McDonald,
South to K Rd,
1 East, 1 South, 1/2 East,
North into

Log Measured From: Kelly Bushing 5 Ft. Above Permanent Datum

THANK YOU FOR USING MIDWEST WIRELINE LLC
785-625-3858

Your Midwest Wireline Crew

Engineer: D. Schmidt
Operator:
Operator:
Operator:

This Log Record Was Witnessed By

Primary Witness: Saman Sharifaie
Secondary Witness:
Secondary Witness:
Secondary Witness:

Sensor	Offset (ft)	Schematic	Description	Length (ft)	O.D. (in)	Weight (lb)
GR	40.33		GR-M&W (102)	3.00	3.50	50.00
CNLSC CNSSC	37.23 36.48		CNT-M&W (207)	5.00	3.50	100.00
LSD DCAL SSD	28.18 28.17 27.68		CDL-M&W (307-11)	8.50	4.00	250.00
MCAL MI MN	19.58 19.58 19.58		ML-PSIML (401)	7.58	4.00	65.00
RLL3F RLL3	15.50 15.50					
CILD	8.33		DIL-M&W (507)	18.25	3.50	220.00
CILM	4.50					
SP	0.20					

Dataset: brito_tlm 1-15.db: field/well/stkml/pass4.1
 Total length: 42.33 ft
 Total weight: 685.00 lb
 O.D.: 4.00 in

Log Variables

DatabaseC:\ProgramData\Warrior\Data\brito_tlm 1-15.db
 Dataset field/well/stkml/pass4.1/_vars_

Top - Bottom

BOREID in 7.875	BOTTEMP degF 126	CASEOD in 5.5	CASETHCK in 0	FLUIDDEN g/cc 1	MATRXDEN g/cc 2.71	NPORSEL Limestone	PERFS No
SNDERR mmho/m 0	SNDERRM mmho/m 0	SPSHIFT mV 440	SRFTEMP degF 60	SZCOR Off	TDEPTH ft 4951		

Variable Description

BOREID : Borehole I.D.
 BOTTEMP : Bottom Hole Temperature
 CASEOD : Casing O.D.
 CASETHCK : Casing Thickness
 FLUIDDEN : Fluid Density
 MATRXDEN : Matrix Density
 NPORSEL : Neutron Porosity Curve Select

PERFS : Perforation Flag
 SNDERR : Deep Sonde Error Correction
 SNDERRM : Medium Sonde Error Correction
 SPSHIFT : S.P. Baseline Offset
 SRFTEMP : Surface Temperature
 SZCOR : CN Size Cor. ?
 TDEPTH : Total Depth



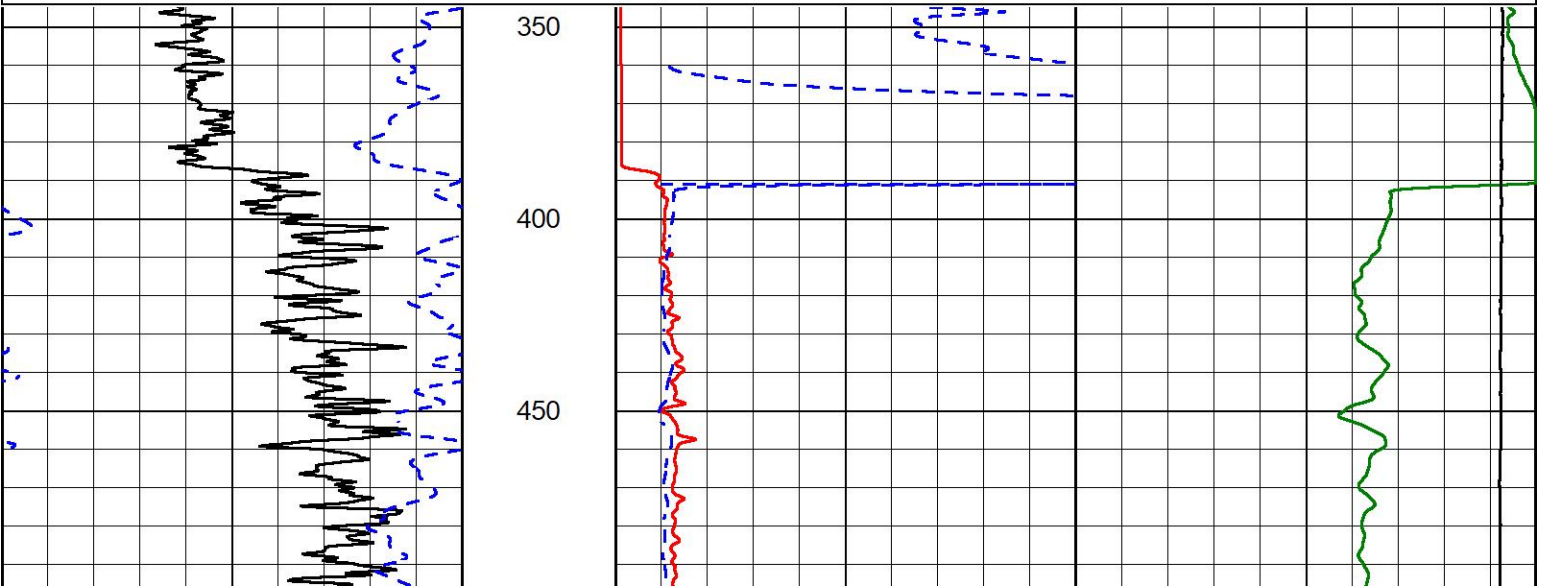
MIDWEST WIRELINE

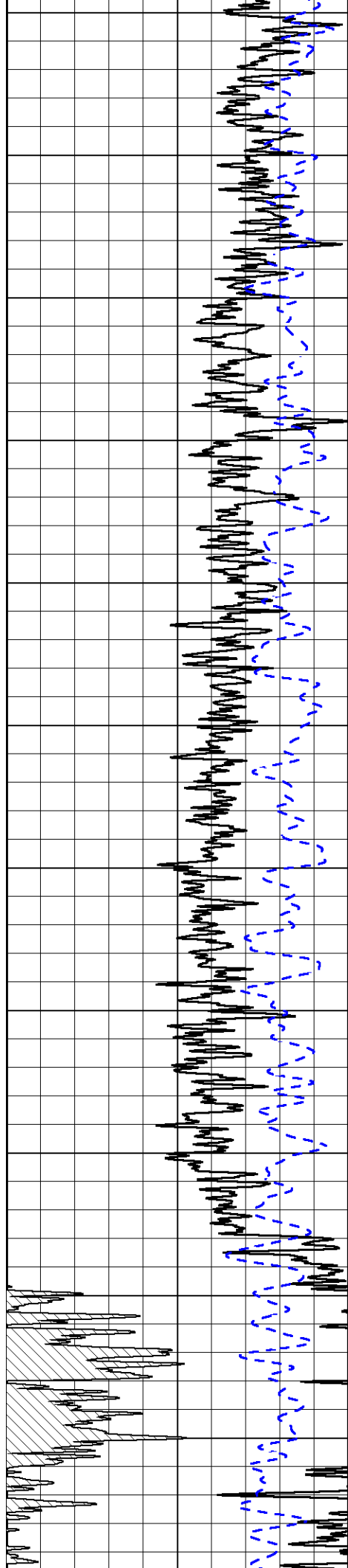
2" SCALE RESISTIVITY

MAIN PASS

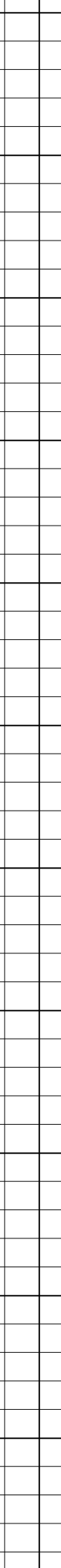
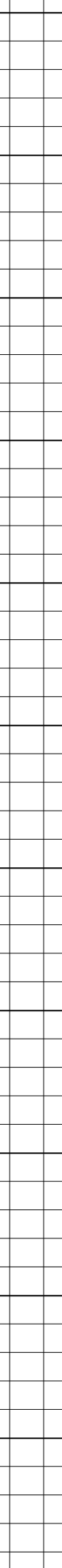
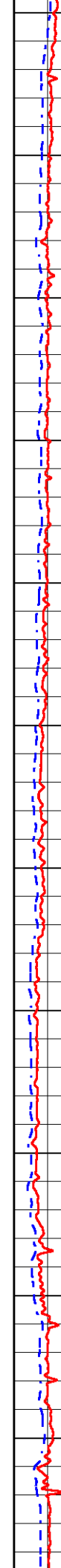
Database File brito_tlm 1-15.db
 Dataset Pathname stkml/pass4.3
 Presentation Format _dil2in
 Dataset Creation Wed Sep 27 06:16:24 2023
 Charted by Depth in Feet scaled 1:600

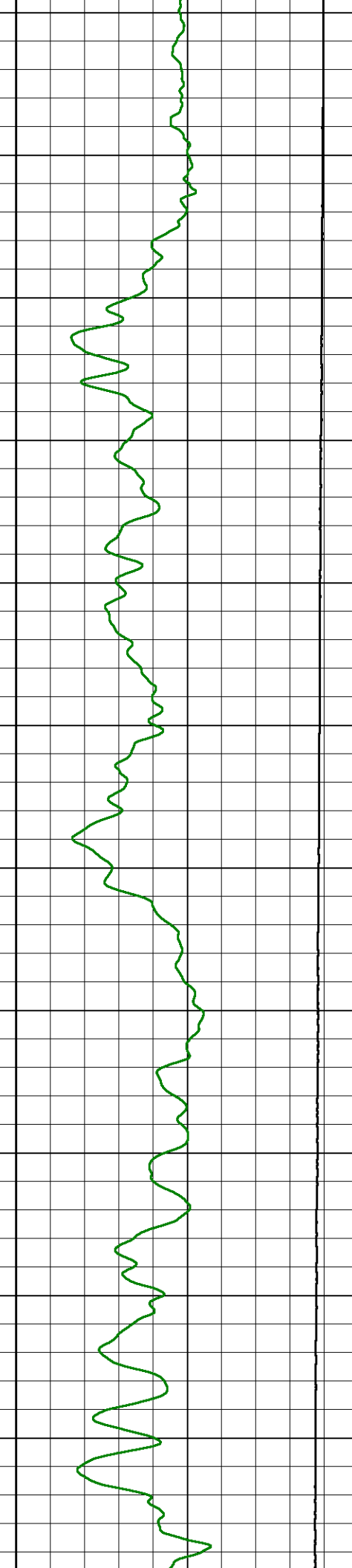
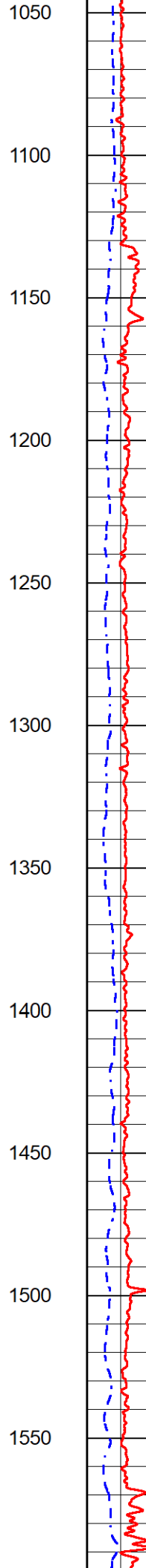
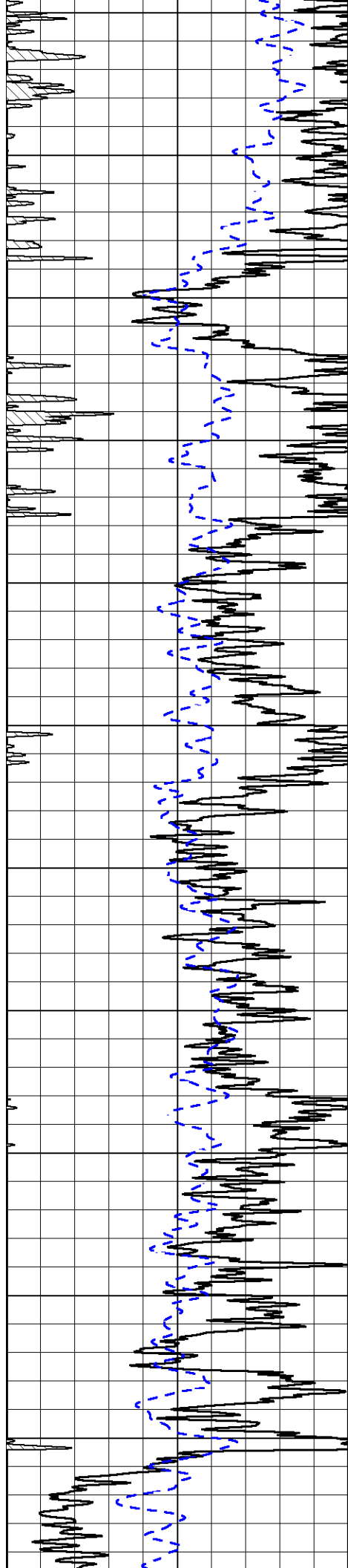
0	Gamma Ray (GAPI)	150	1000	Conductivity (mmho/m)	0
-200	SP (mV)	0	15000	Line Tension (lb)	0
			0	Shallow Resistivity (Ohm-m)	50
			0	Deep Resistivity (Ohm-m)	50
			50	Shallow Resistivity (Ohm-m)	200
			50	Deep Resistivity (Ohm-m)	200

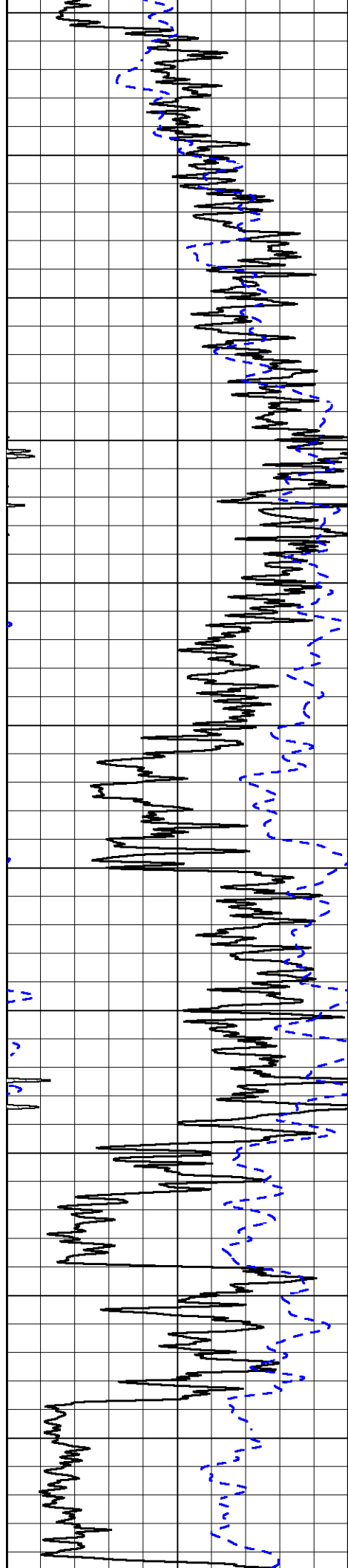




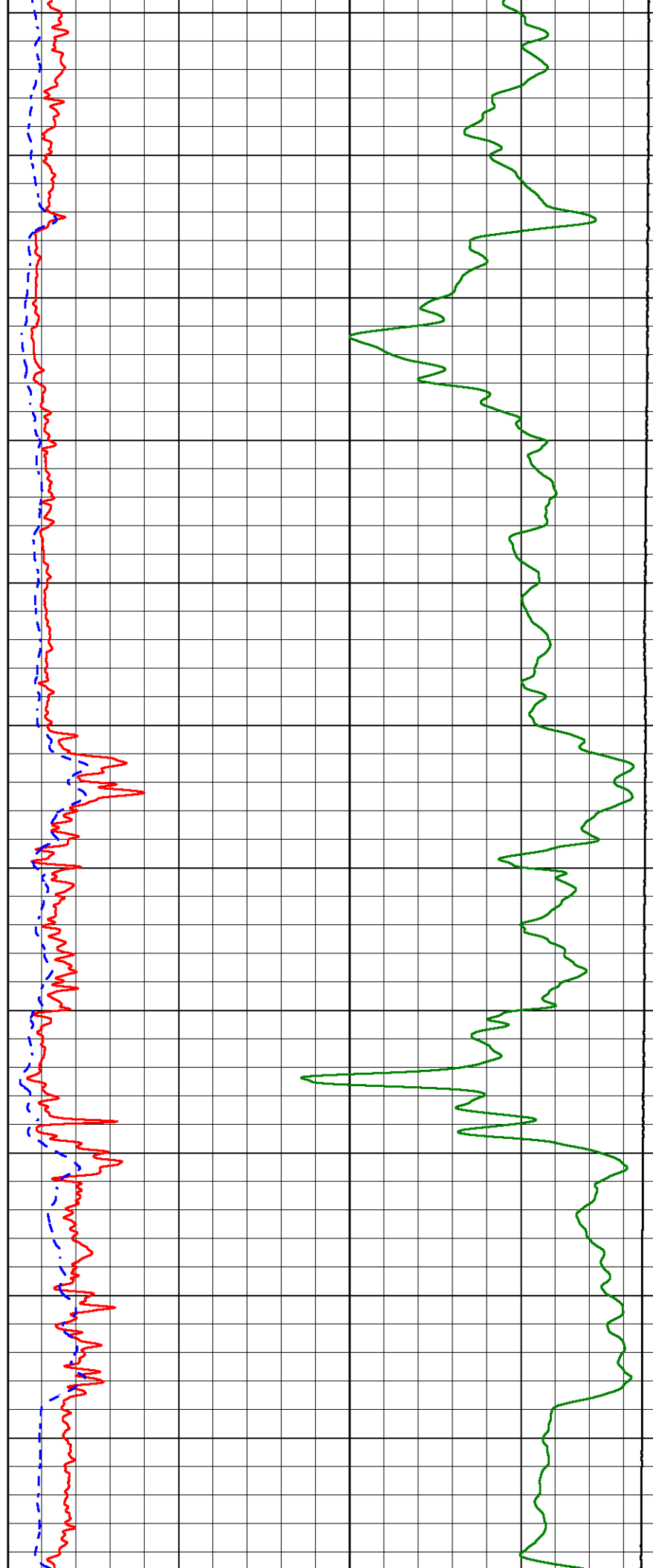
500
550
600
650
700
750
800
850
900
950
1000

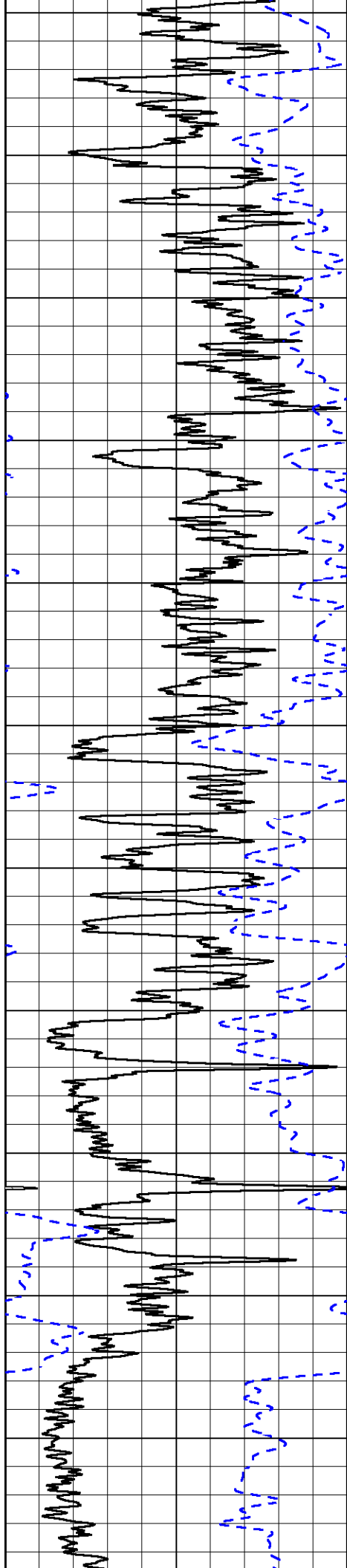




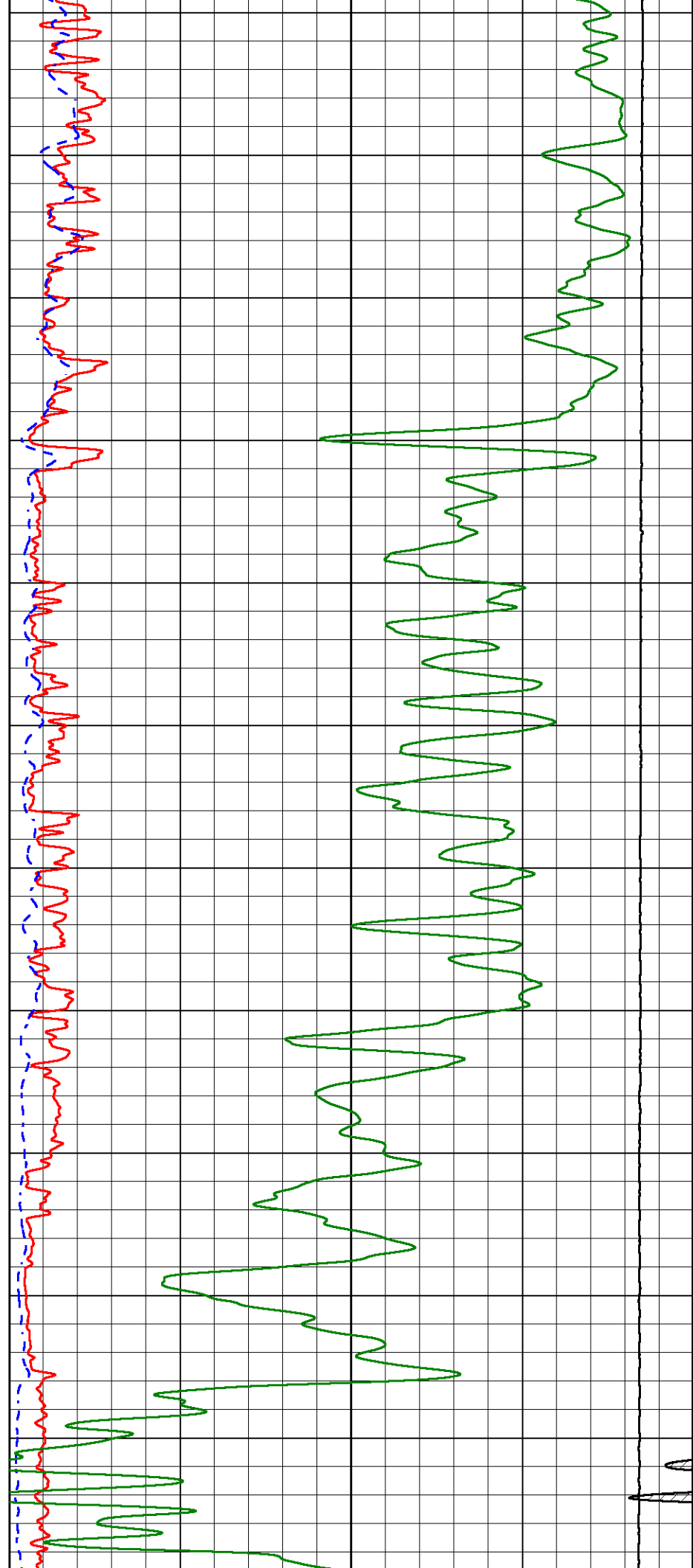


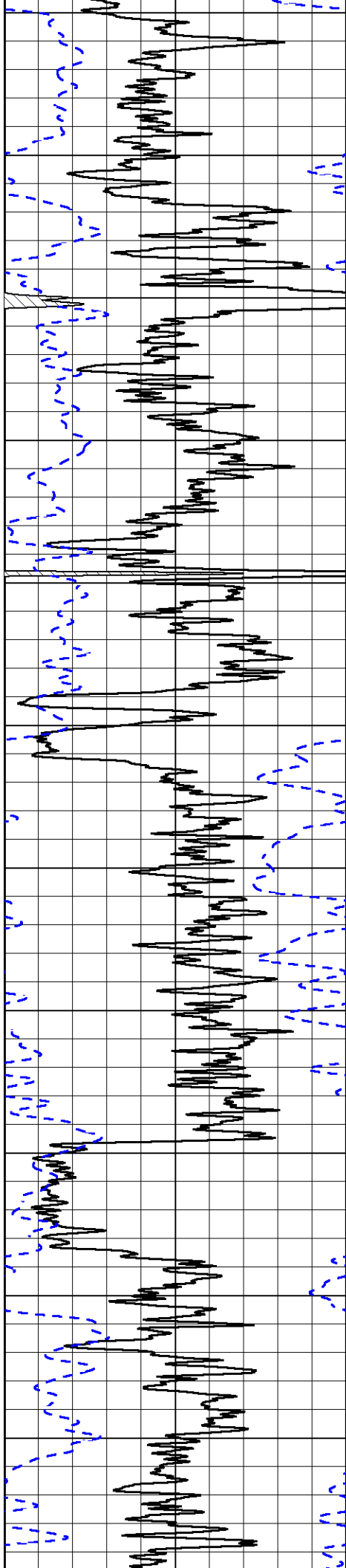
1600
1650
1700
1750
1800
1850
1900
1950
2000
2050
2100



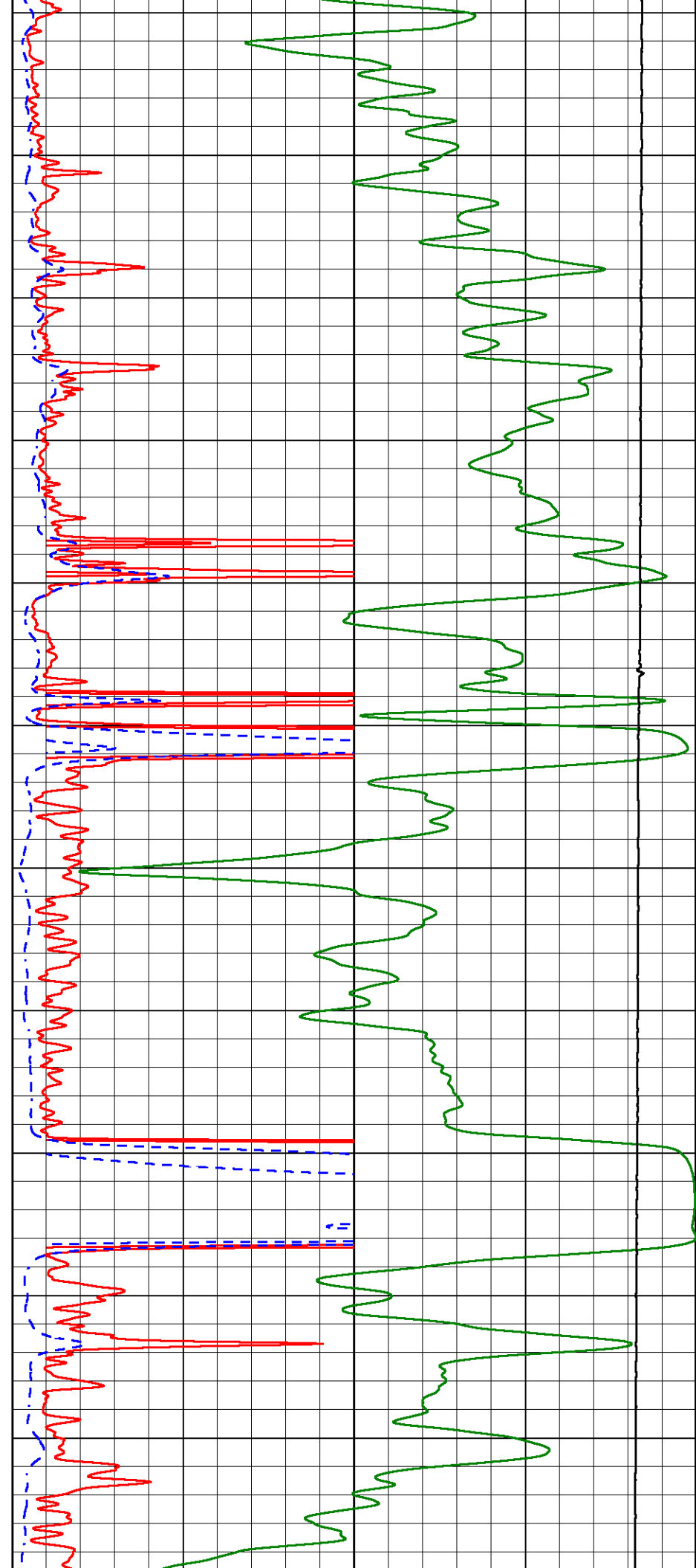


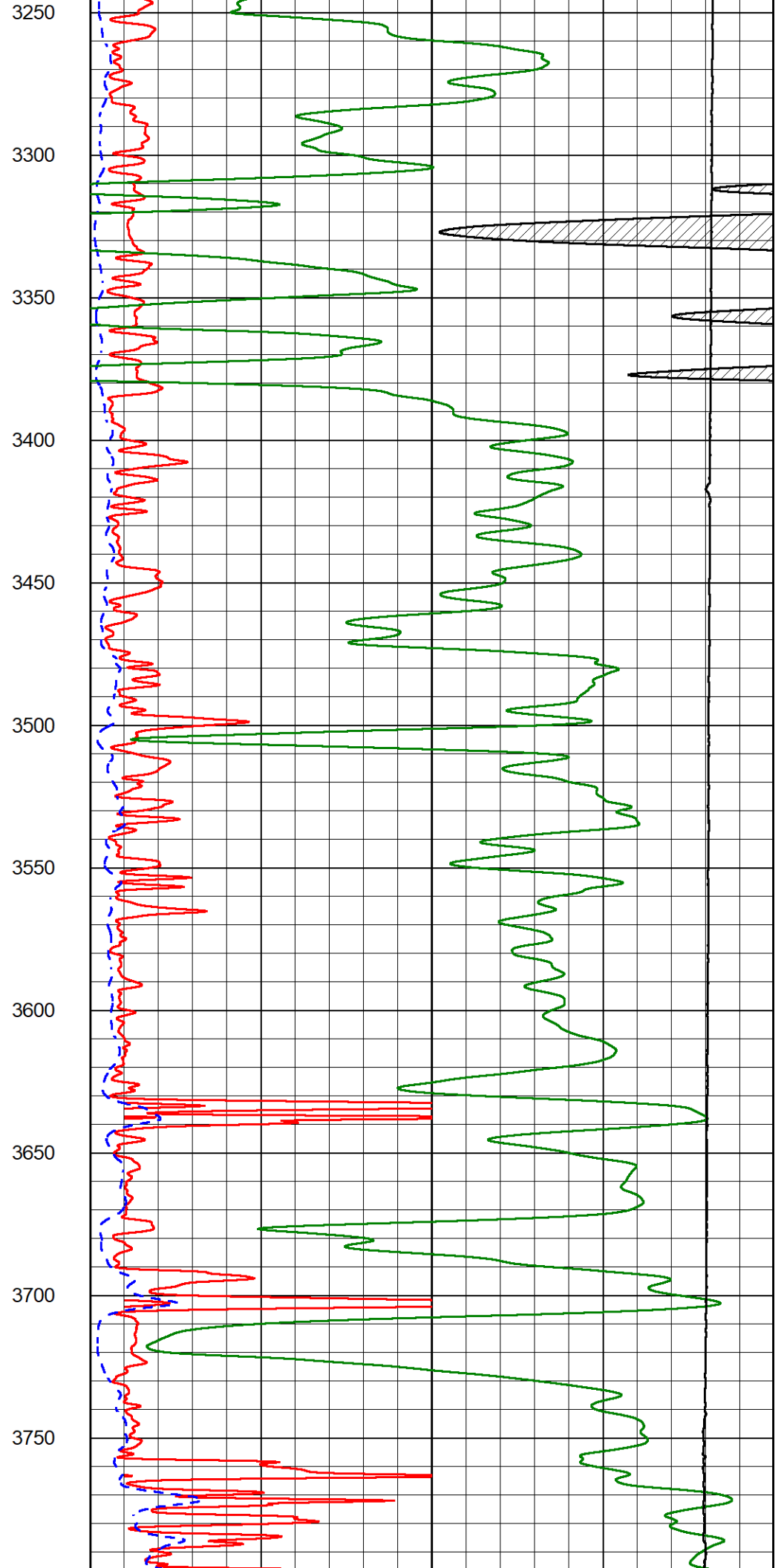
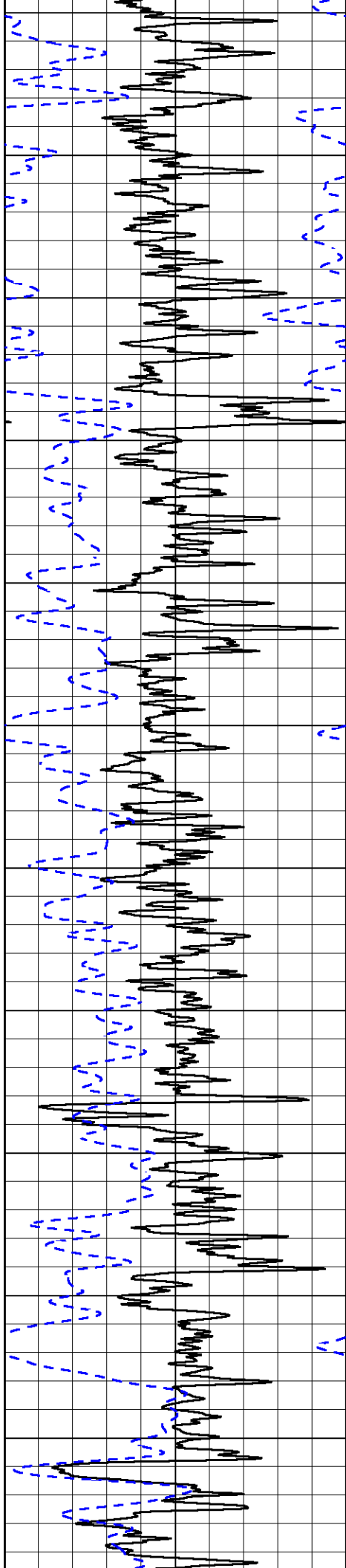
2150
2200
2250
2300
2350
2400
2450
2500
2550
2600
2650

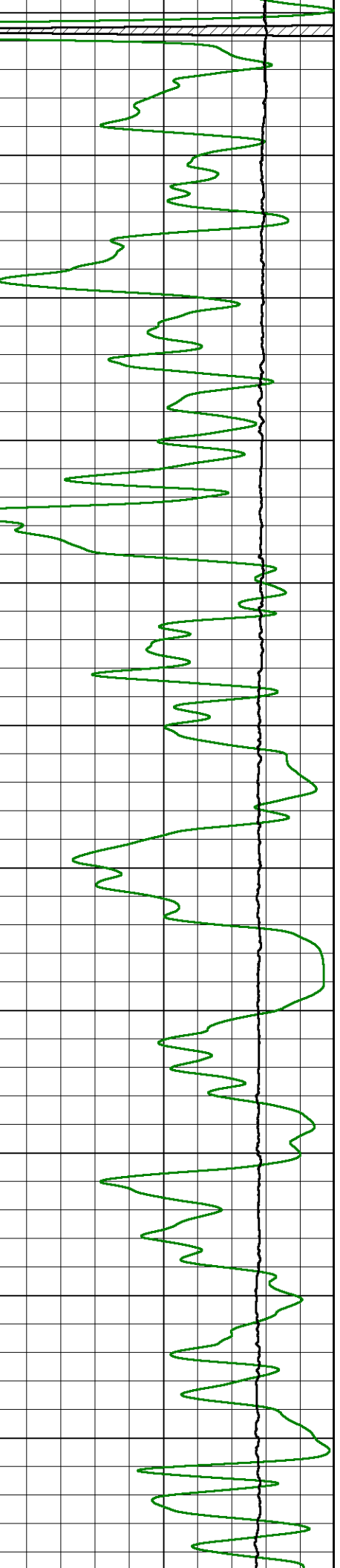
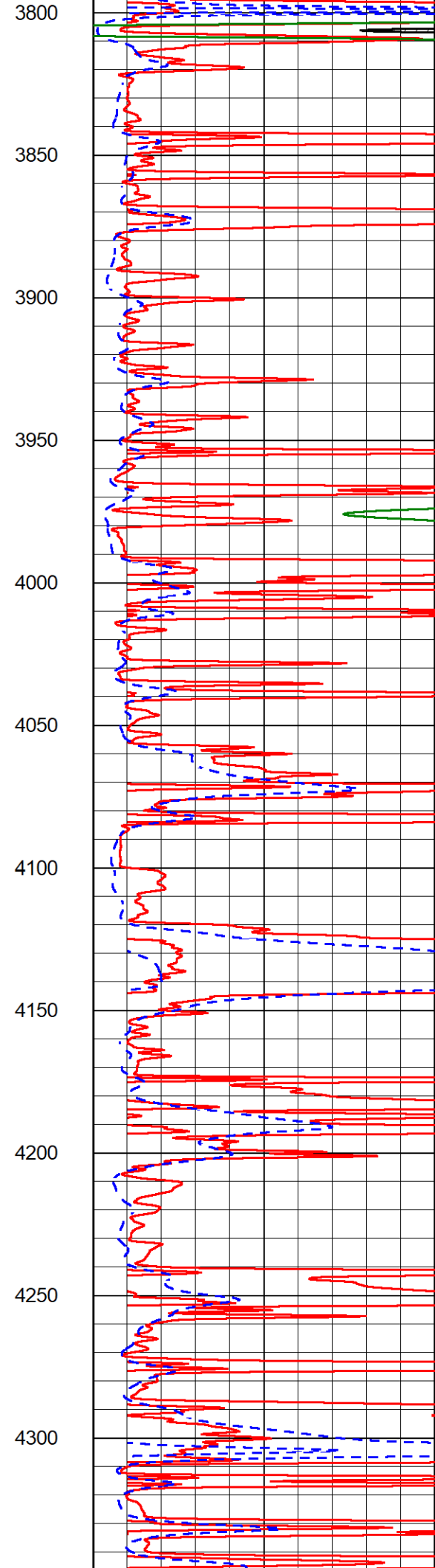
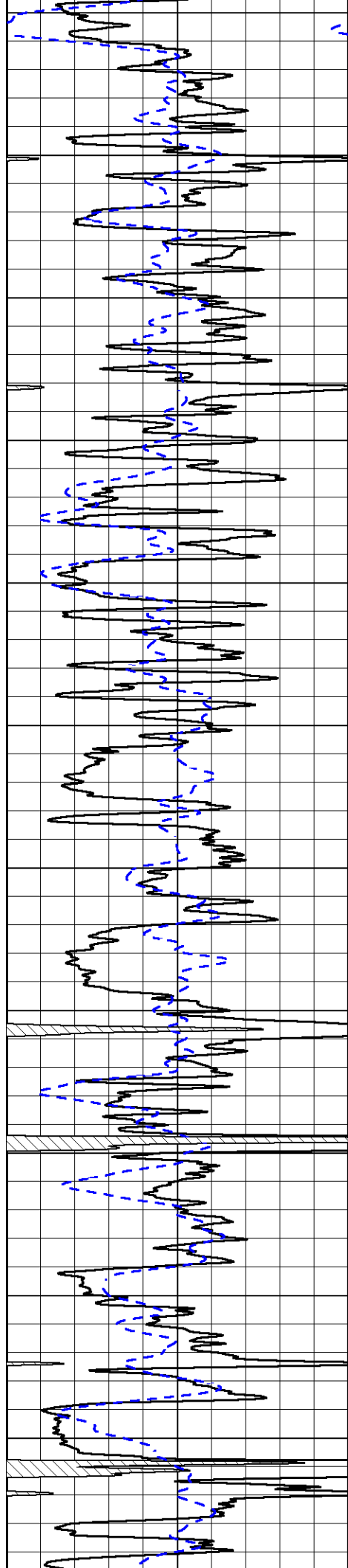


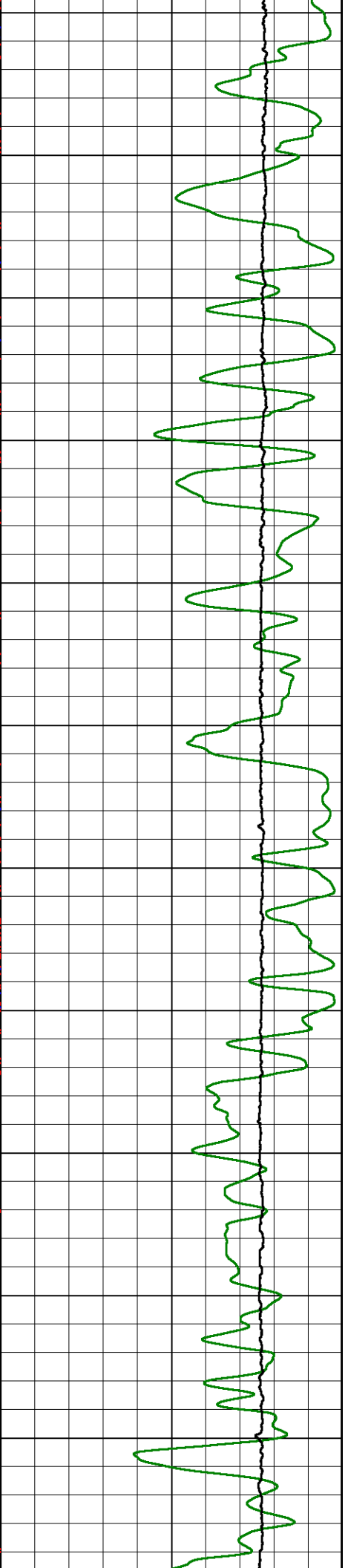
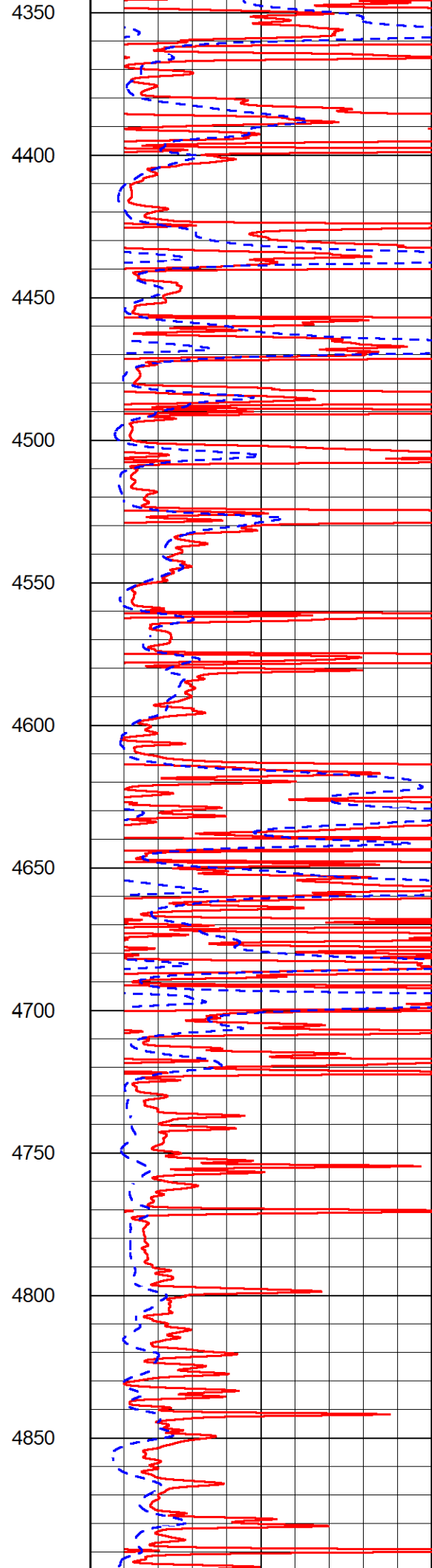
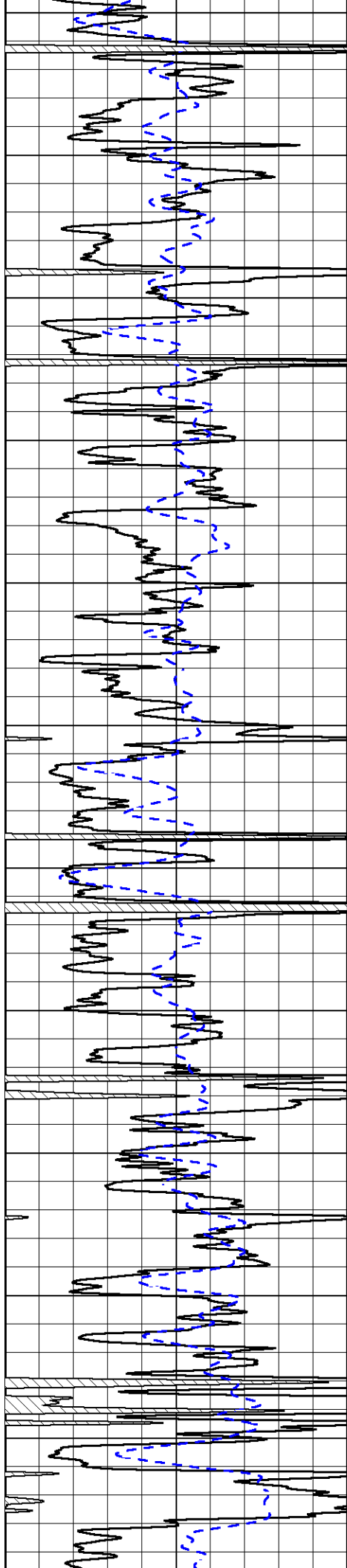


2700
2750
2800
2850
2900
2950
3000
3050
3100
3150
3200

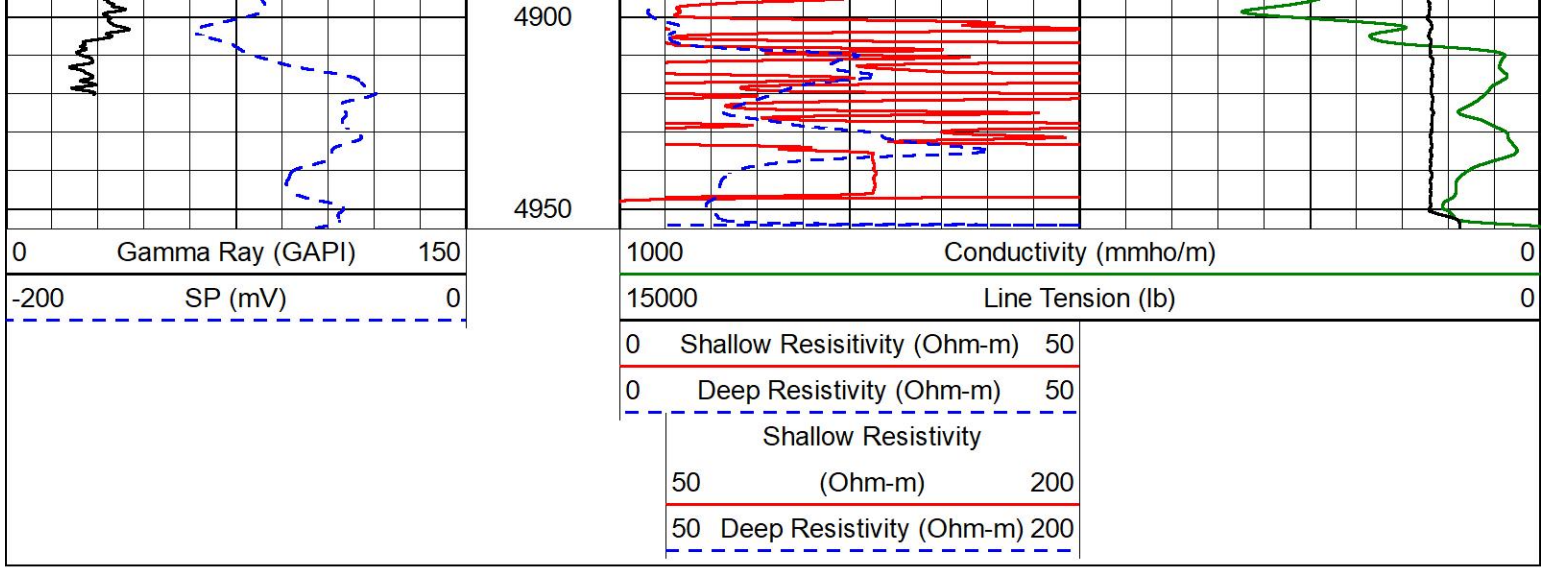








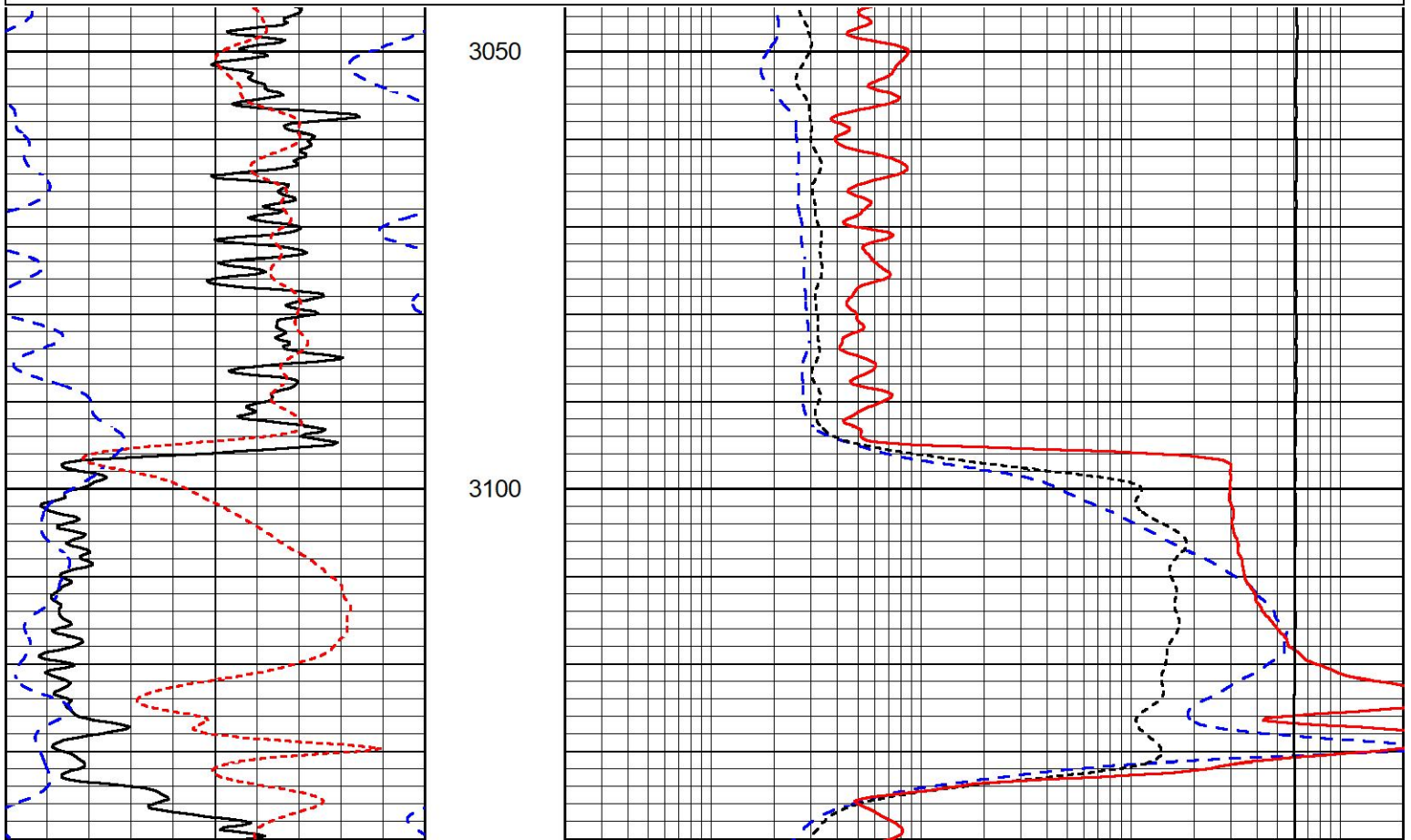
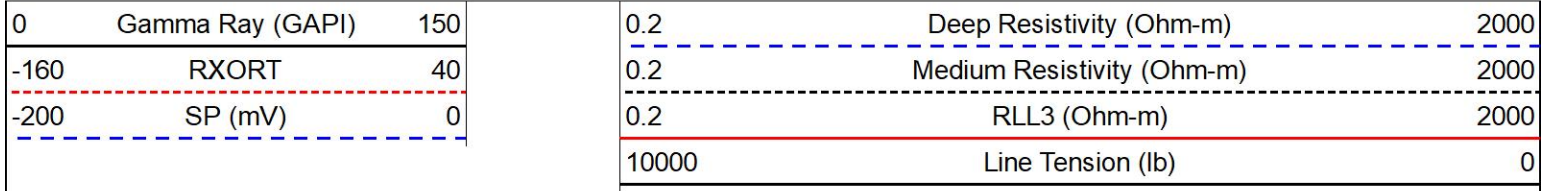
4350
4400
4450
4500
4550
4600
4650
4700
4750
4800
4850

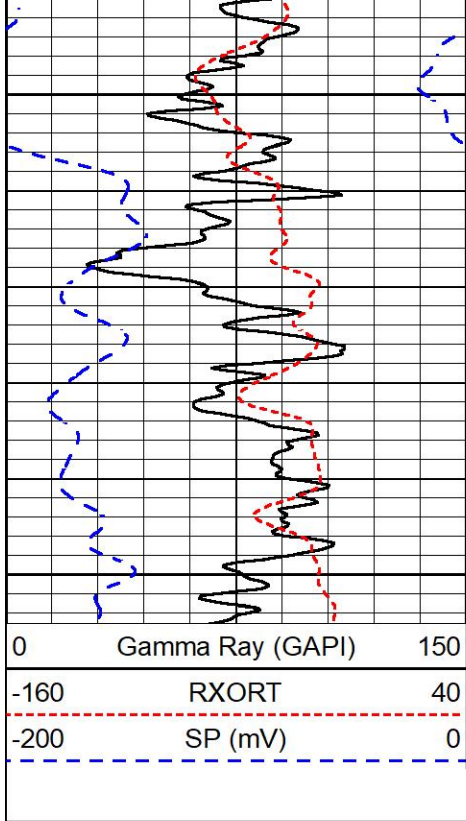


ANHYDRITE SECTION

MAIN PASS

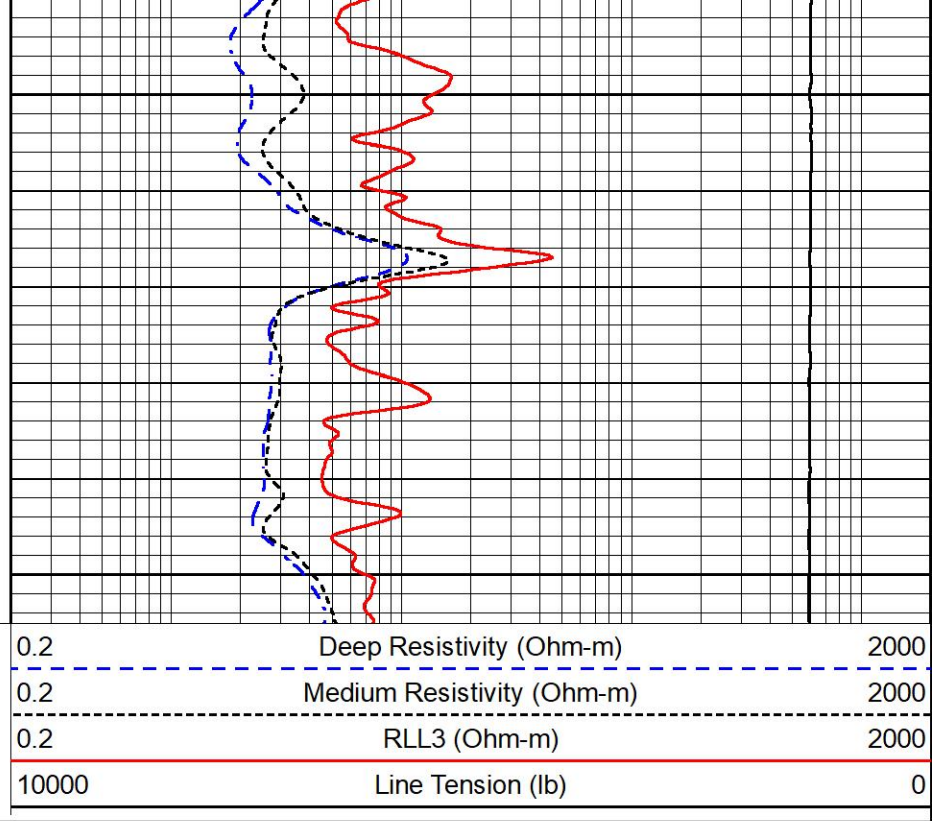
Database File brito_tlm 1-15.db
 Dataset Pathname stkml/pass4.4
 Presentation Format _dil
 Dataset Creation Wed Sep 27 06:16:36 2023
 Charted by Depth in Feet scaled 1:240





3150

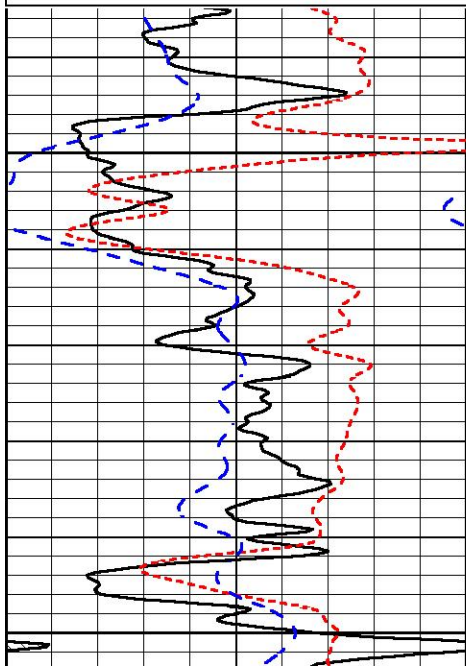
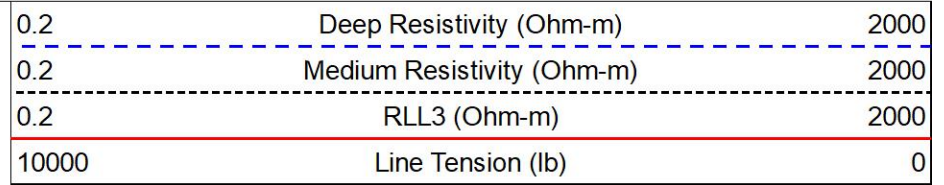
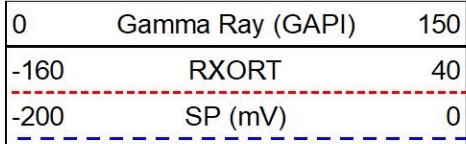
3200



DETAIL SECTION

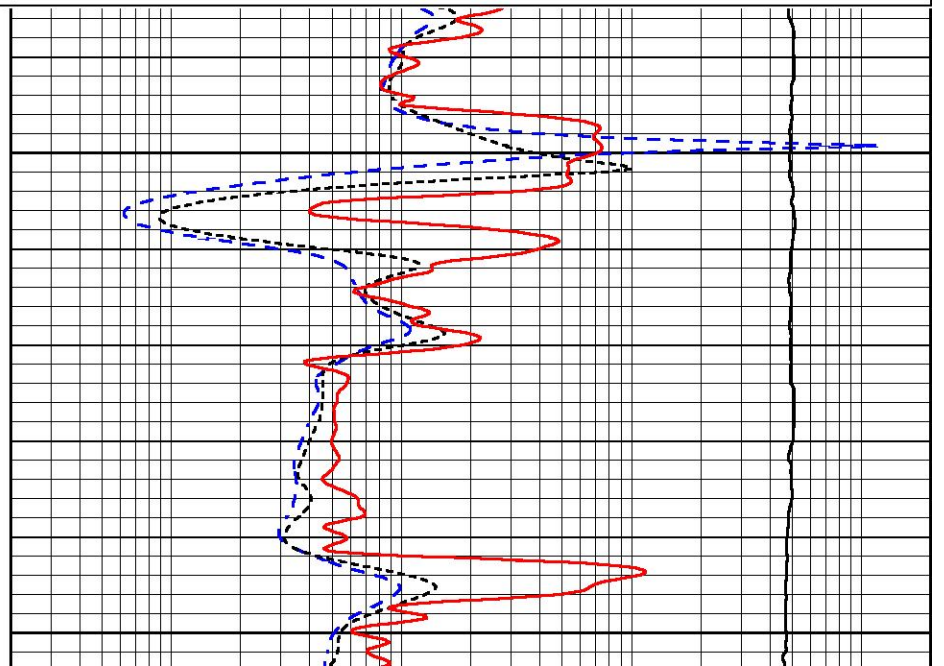
MAIN PASS

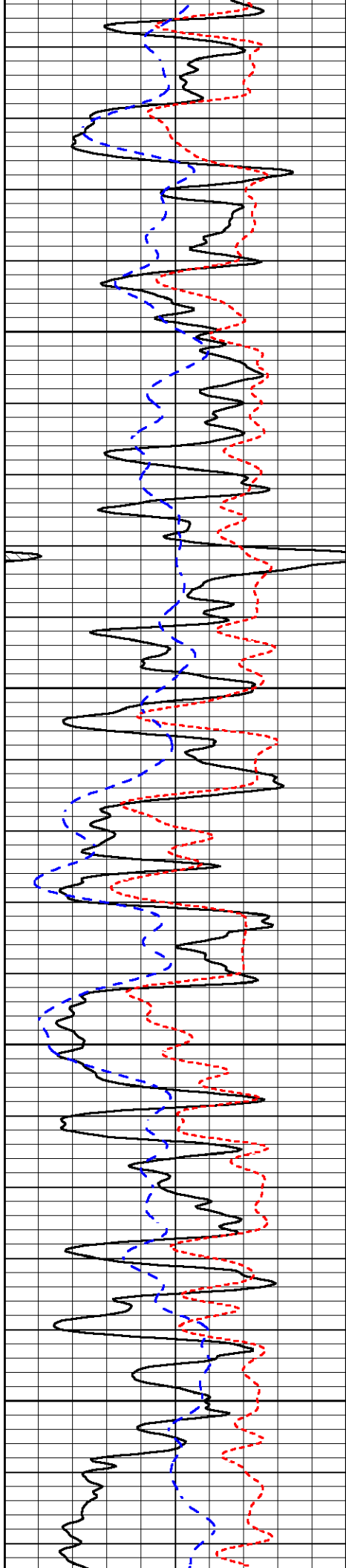
Database File brito_tlm 1-15.db
 Dataset Pathname stkml/pass4.1
 Presentation Format _dil
 Dataset Creation Wed Sep 27 06:16:13 2023
 Charted by Depth in Feet scaled 1:240



3800

3850



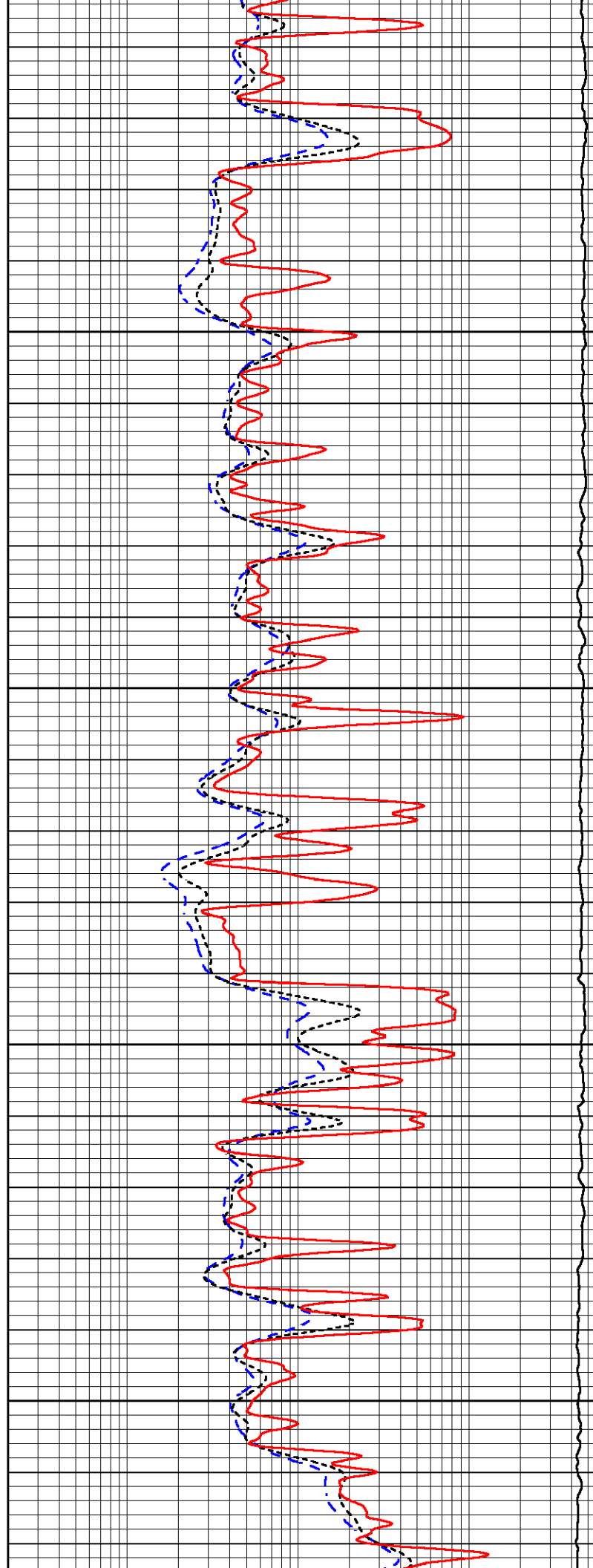


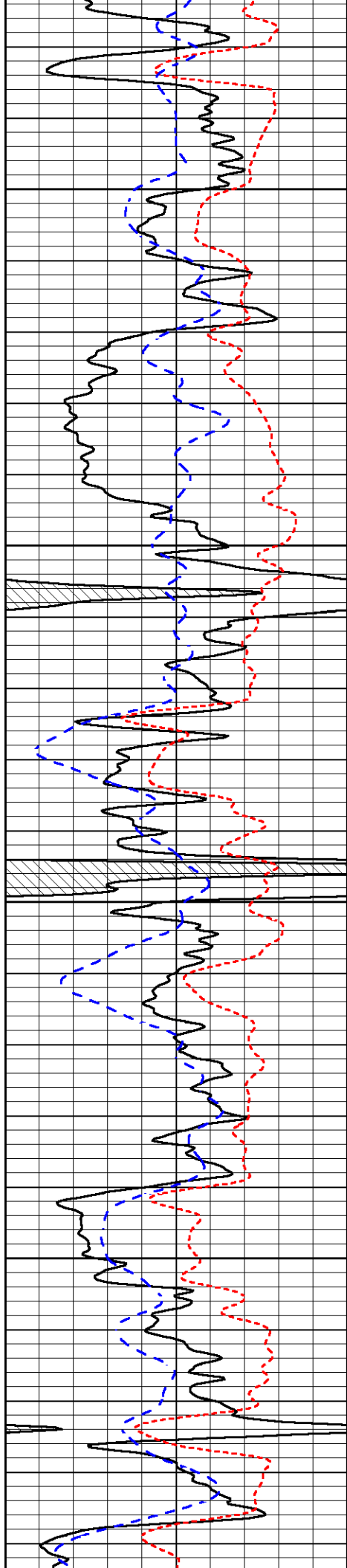
3900

3950

4000

4050



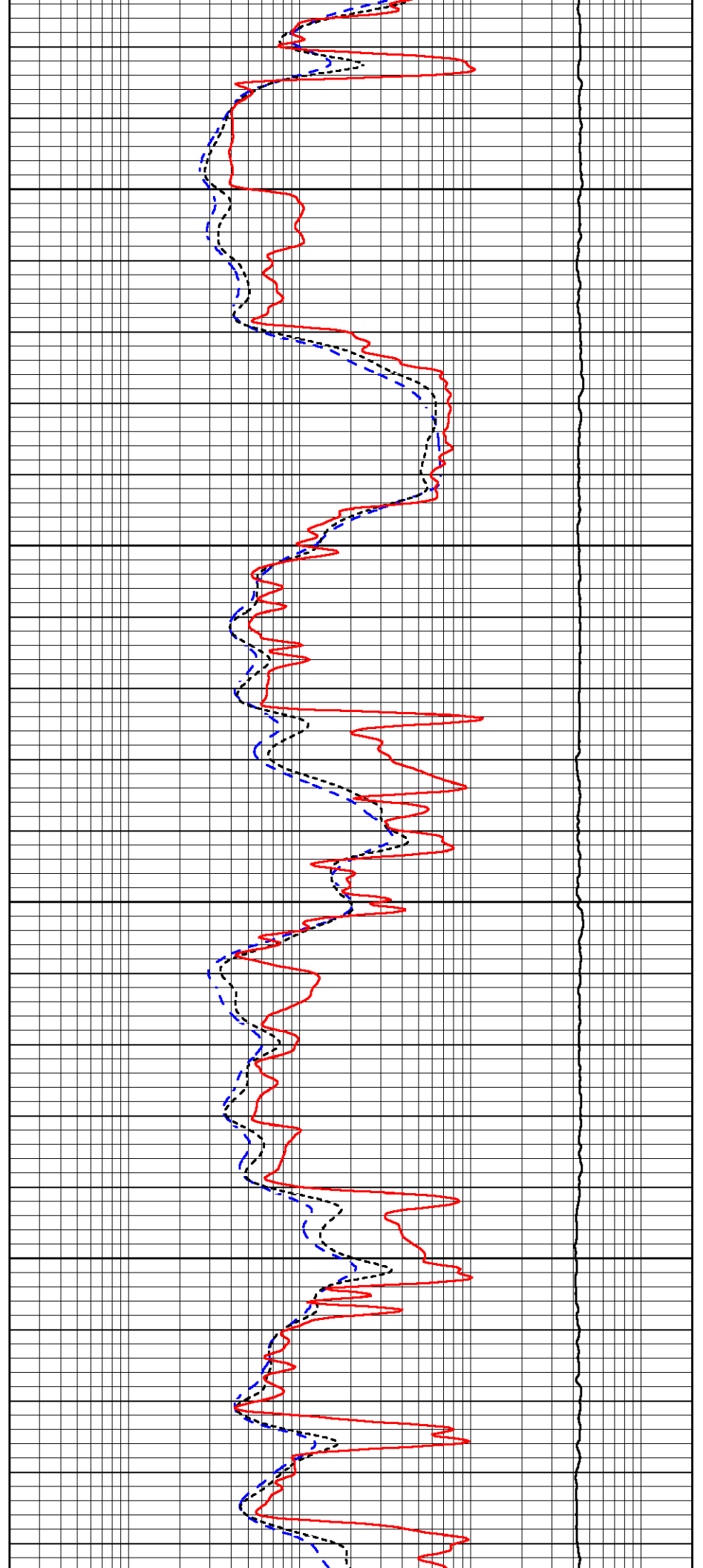


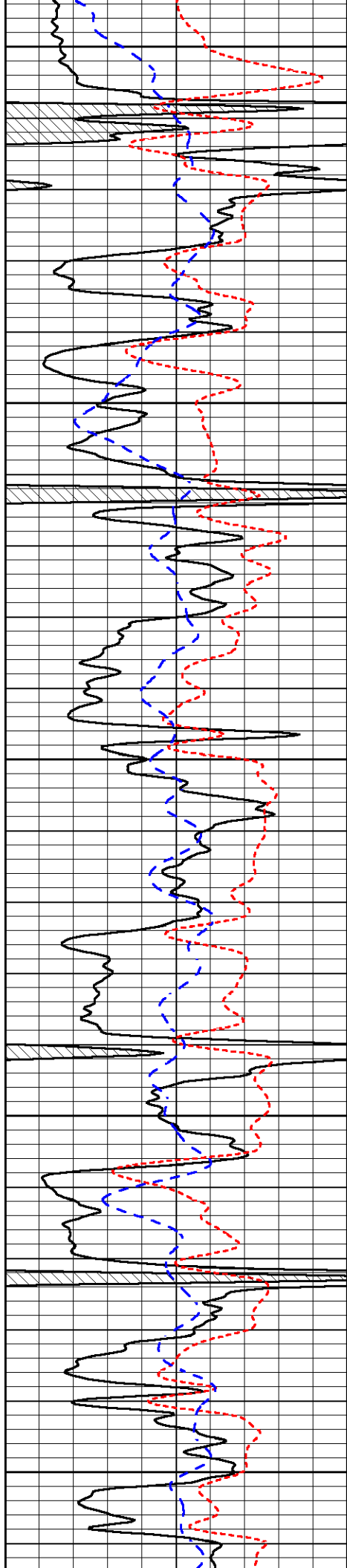
4100

4150

4200

4250





4300

4350

4400

4450

4500



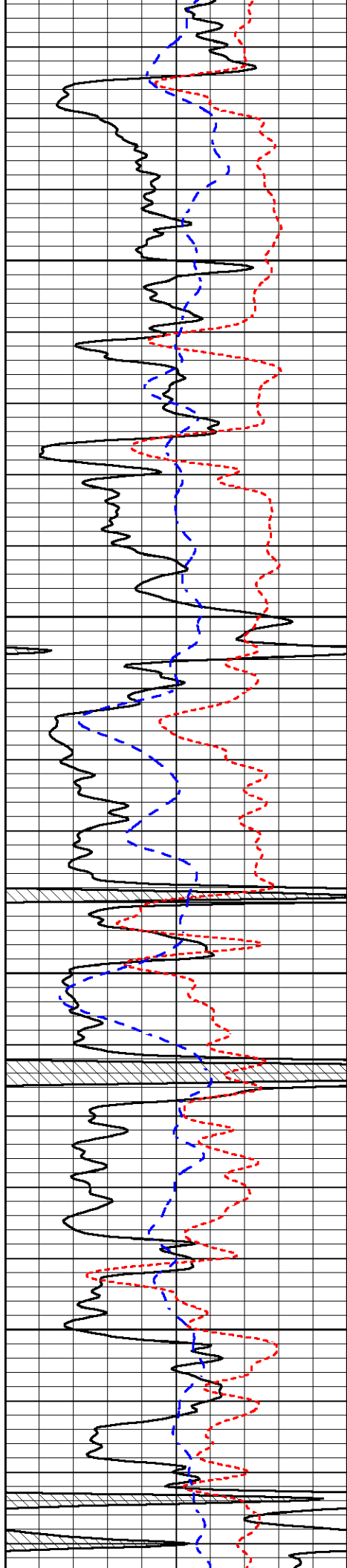
4300

4350

4400

4450

4500

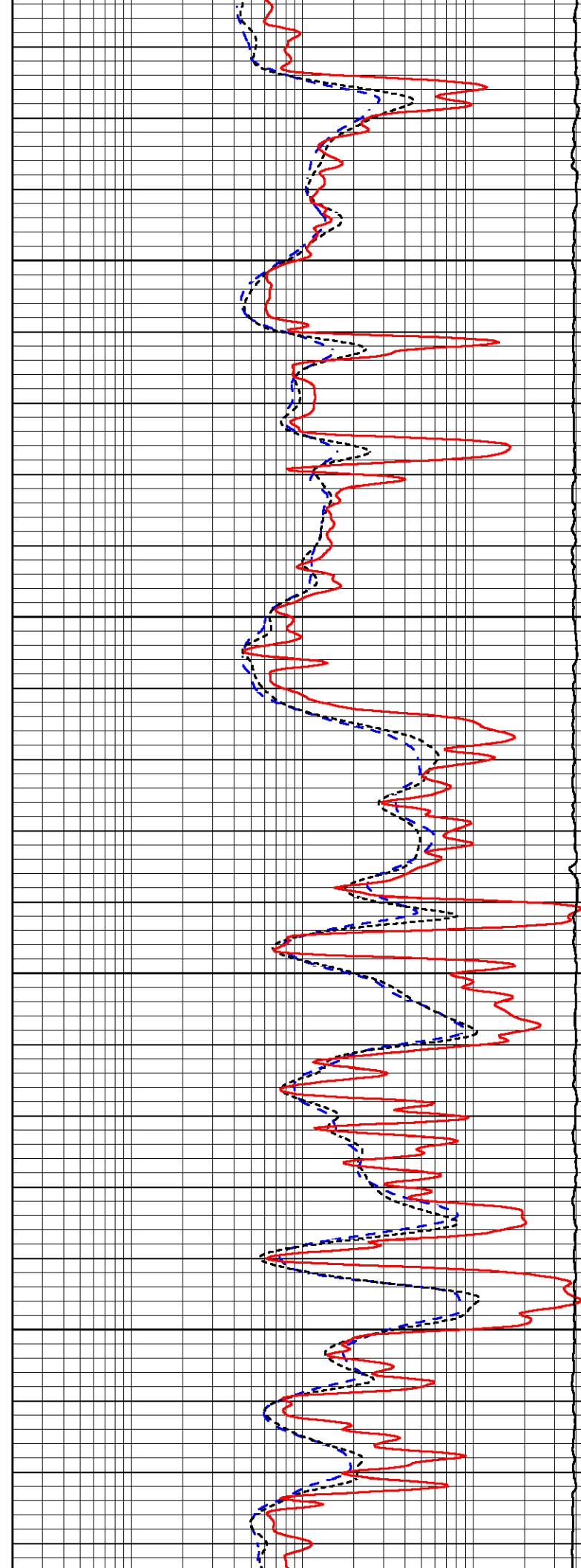


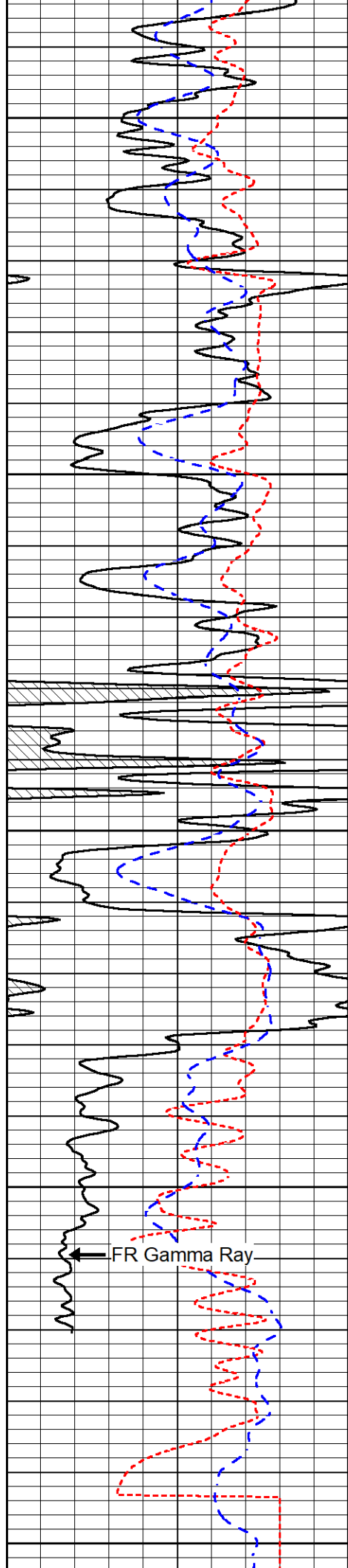
4550

4600

4650

4700





4750

4800

4850

4900

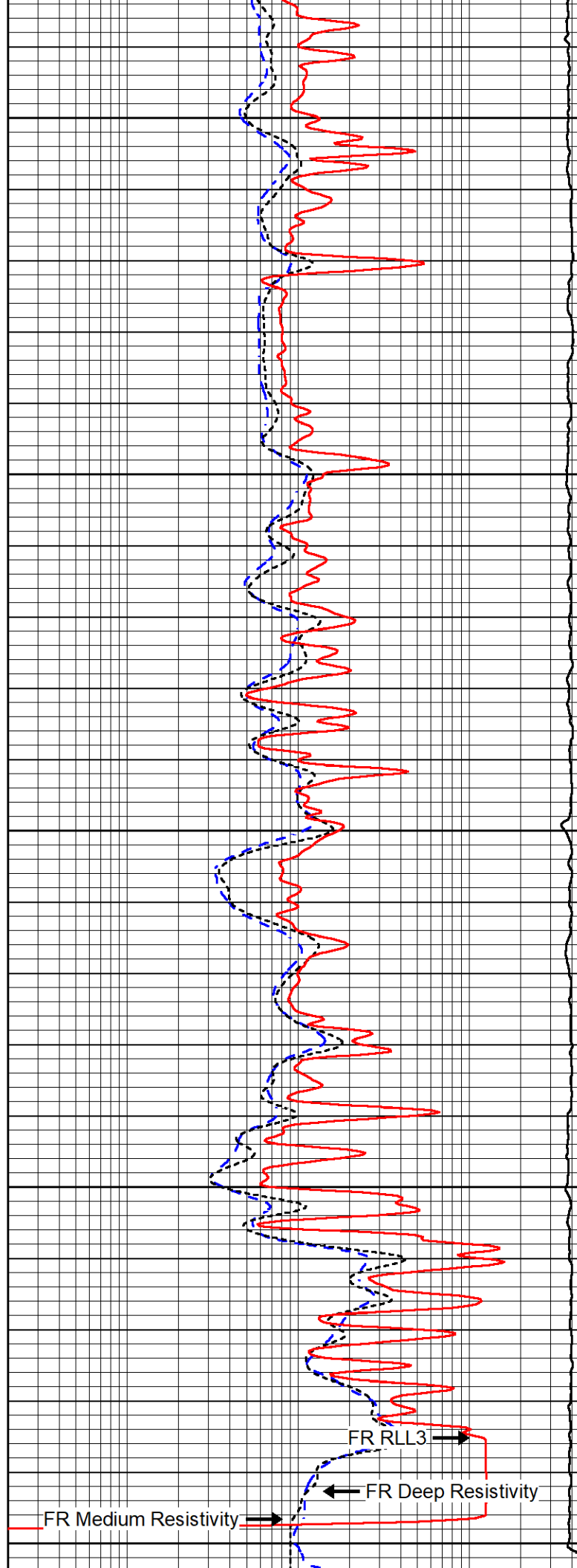
4950

FR Gamma Ray

FR RLL3

FR Deep Resistivity

FR Medium Resistivity



FR Medium Resistivity

0	Gamma Ray (GAPI)	150
-160	RXORT	40
-200	SP (mV)	0

0.2	Deep Resistivity (Ohm-m)	2000
0.2	Medium Resistivity (Ohm-m)	2000
0.2	RLL3 (Ohm-m)	2000
10000	Line Tension (lb)	0



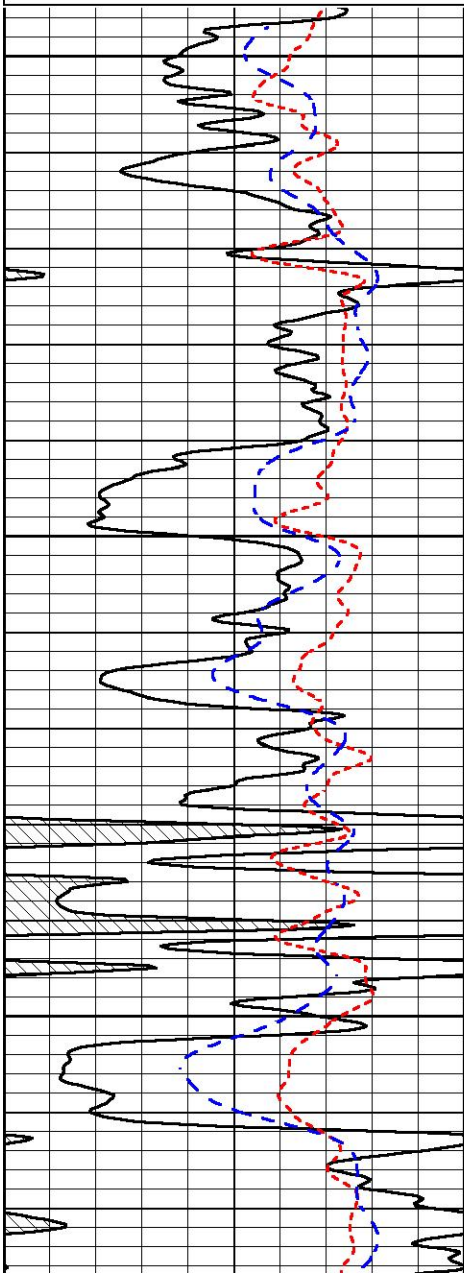
REPEAT SECTION

REPEAT PASS

Database File brito_tlm 1-15.db
 Dataset Pathname stkml/pass2.1
 Presentation Format _dil
 Dataset Creation Wed Sep 27 05:26:04 2023
 Charted by Depth in Feet scaled 1:240

0	Gamma Ray (GAPI)	150
-160	RXORT	40
-200	SP (mV)	0

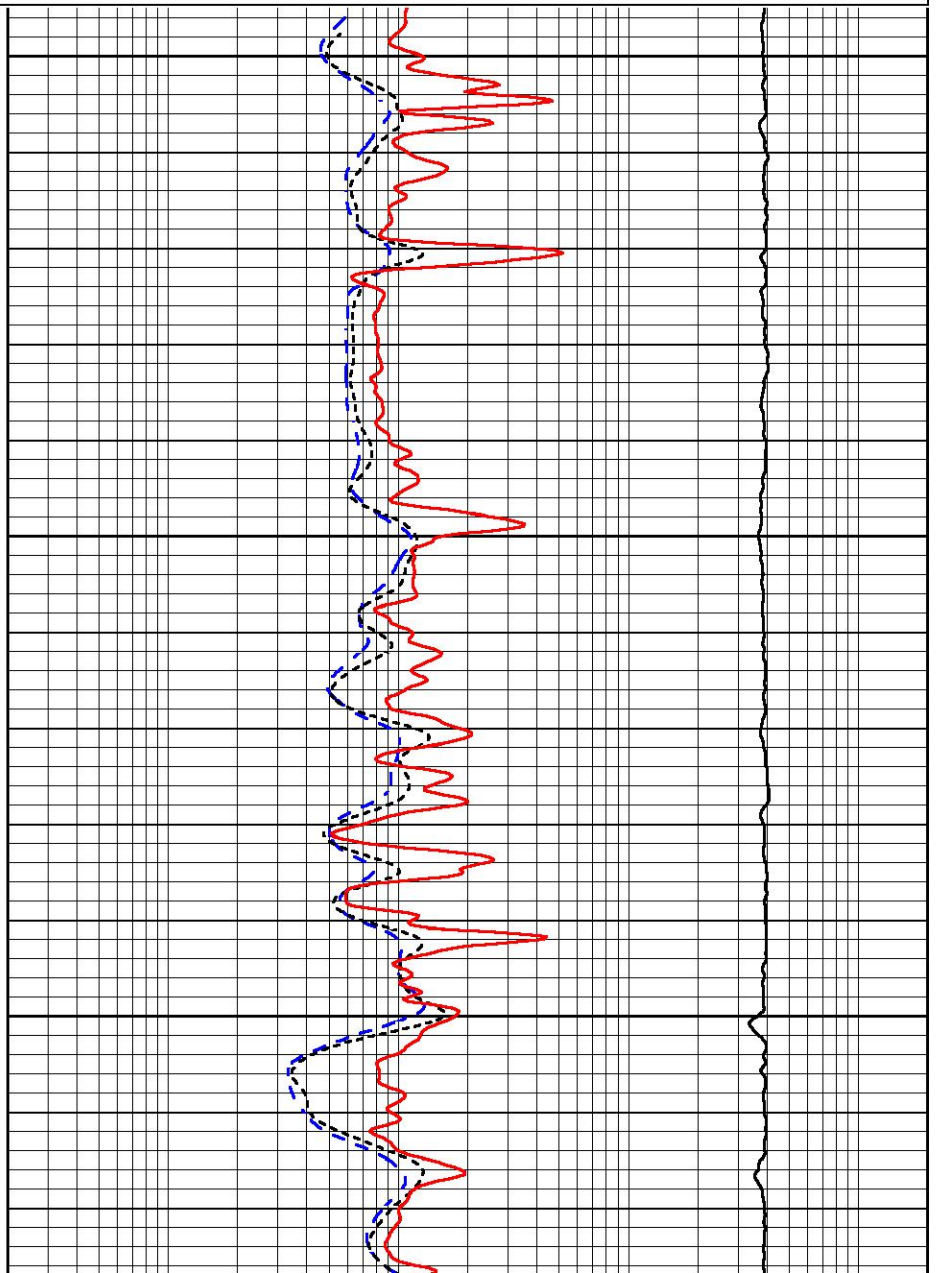
0.2	Deep Resistivity (Ohm-m)	2000
0.2	Medium Resistivity (Ohm-m)	2000
0.2	RLL3 (Ohm-m)	2000
10000	Line Tension (lb)	0

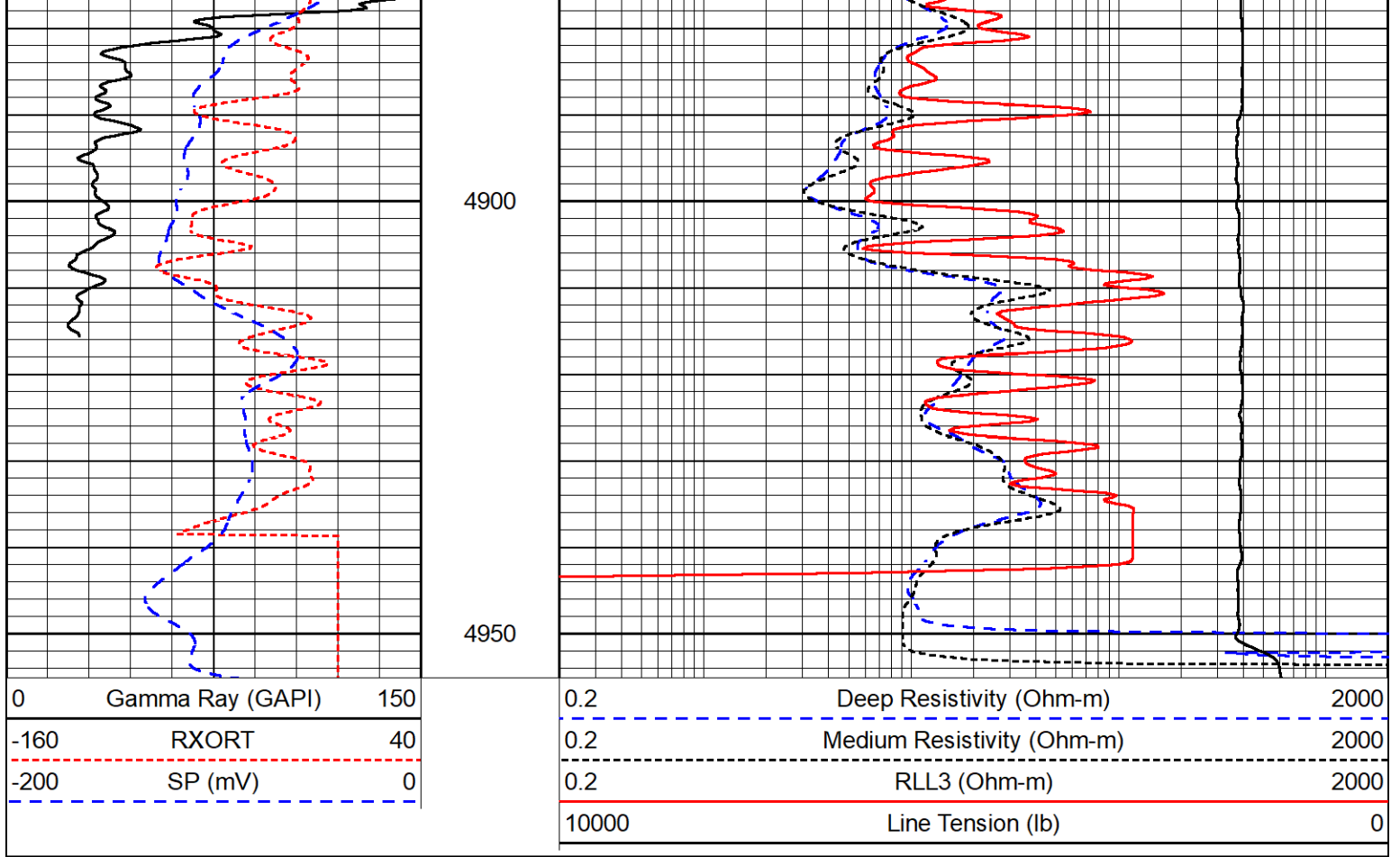


4750

4800

4850





Calibration Report

Database File brito_tlm 1-15.db
 Dataset Pathname stkml/pass4.1
 Dataset Creation Wed Sep 27 06:16:13 2023

Dual Induction Calibration Report

Serial-Model: 507-M&W
 Surface Cal Performed:

Loop:	Readings		References			Results	
	Air	Loop	Air	Loop		m	b
Deep	68.570	638.100	0.000	255.800	mmho/m	0.500	-37.000
Medium	184.288	716.191	0.000	255.800	mmho/m	0.430	-75.000

Microlog Calibration Report

Serial-Model: 401-PSIML
 Performed: Mon Sep 25 22:02:56 2023

	Readings		References			Results	
	Zero	Cal	Zero	Cal		m	b
Normal	0.0000	1.0000	0.0000	1.0000	Ohm-m	22000.0000	-3.1000
Inverse	0.0000	1.0000	0.0000	1.0000	Ohm-m	27000.0000	-4.0000
Caliper	1.0052	1.0858	5.0000	16.5000	in	100.0000	-94.8500

Compensated Density Calibration Report

Serial-Model: 307-11-M&W

Source / Verifier:
 Master Calibration Performed:
 Before Survey Verification Performed:
 After Survey Verification Performed:

20762B / 261
 Tue Jun 6 21:48:20 2023

Master Calibration

	Density		Far Detector	Near Detector	
Magnesium	1.755	g/cc	3689.70	4749.82	cps
Aluminum	2.580	g/cc	822.19	3221.38	cps
Spine Angle = 75.50			Density/Spine Ratio = 0.532		
	Size		Reading		
Small Ring	6.00	in	1.16		
Large Ring	18.00	in	1.01		

Compensated Neutron Calibration Report

Serial Number: 207
 Tool Model: M&W

CALIBRATION

Detector	Readings	Target	Normalization
Short Space	6240.00 cps	1000.00 cps	1.6025
Long Space	460.00 cps	1000.00 cps	1.9500

PRE-SURVEY VERIFICATION

	Detector	Readings	Measured	Target
1)	Short Space	cps		
	Long Space	cps	pu	pu
2)	Short Space	cps		
	Long Space	cps	pu	
3)	Short Space	cps		
	Long Space	cps	pu	

POST-SURVEY VERIFICATION

	Detector	Readings	Measured	Target
1)	Short Space	cps		
	Long Space	cps	pu	pu
2)	Short Space	cps		
	Long Space	cps	pu	pu
3)	Short Space	cps		
	Long Space	cps	pu	pu

Gamma Ray Calibration Report

Serial Number: 102
 Tool Model: M&W
 Performed: Mon Sep 25 22:02:33 2023

Calibrator Value: 1.0 GAPI

Background Reading: 0.0 cps
 Calibrator Reading: 1.0 cps



Company	Brito Oil Company, Inc.
Well	TLM #1-15
Field	
County	Rawlins
State	Kansas