



MIDWEST WIRELINE

**DUAL COMPENSATED  
POROSITY**

Company Brito Oil Company, Inc.

Well TLM #1-15

Field

County Rawlins

State Kansas

Location: API #: 15-153-21320-00-00

740 FSL & 1160 FWL

SEC 15 TWP 4S RGE 36W

DIL/MEL

Other Services

Permanent Datum Ground Level Elevation 3345  
 Log Measured From Kelly Bushing  
 Drilling Measured From Kelly Bushing

K.B. 3350  
 D.F.  
 G.L. 3345

Date 9/27/2023

Run Number One

Type Log CNL/CDL

Depth Driller 4950

Depth Logger 4951

Bottom Logged Interval 4922

Top Logged Interval 3800

Type Fluid In Hole Chemical

Salinity, PPM CL 3000

Density 9.4

Level Full

Max. Rec. Temp. F 126

Operating Rig Time 3 Hours

Equipment -- Location P-24 Hays

Recorded By D. Schmidt

Witnessed By Saman Sharifaie

**Borehole Record**

**Casing Record**

Run No.	Bit	From	To	Size	Wgt.	From	To
One	12.25	0	386	8.625	23	0	386
Two	7.875	386	TD				

<<< Fold Here >>>

All interpretations are opinions based on inferences from electrical or other measurements and Midwest Wireline Services, LLC cannot and does not guarantee the accuracy or correctness of any interpretation, and Midwest Wireline Services, LLC will not be liable or responsible for any loss, costs, damages, or expenses incurred or sustained by anyone resulting from any interpretation made by any of our officers, agents or employees.

**Comments**

N/A DENOTES NOT AVAILABLE OR NON-APPLICABLE.

McDonald,  
 South to K Rd,  
 1 East, 1 South, 1/2 East,  
 North into

Log Measured From: Kelly Bushing 5 Ft. Above Permanent Datum

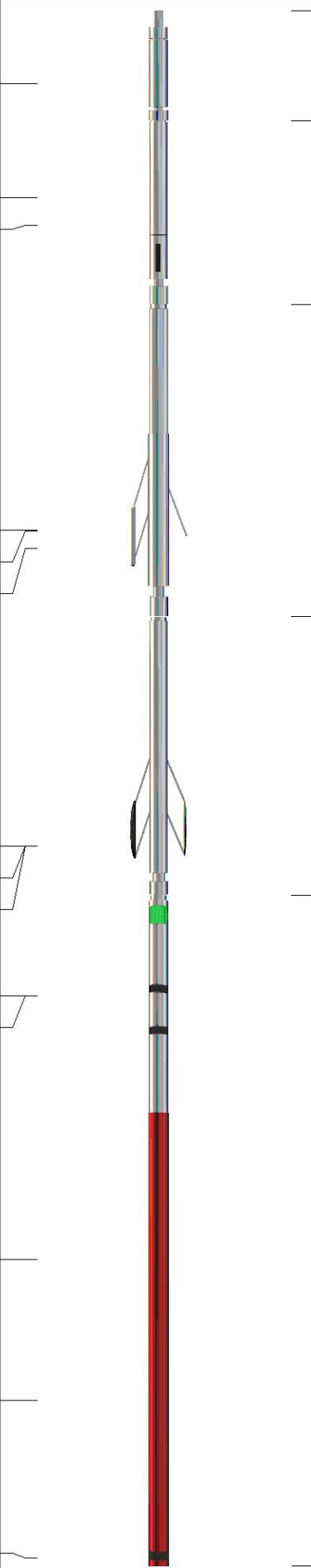
THANK YOU FOR USING MIDWEST WIRELINE LLC  
 785-625-3858

**Your Midwest Wireline Crew**

**This Log Record Was Witnessed By**

Engineer: D. Schmidt  
 Operator:  
 Operator:  
 Operator:

Primary Witness: Saman Sharifaie  
 Secondary Witness:  
 Secondary Witness:  
 Secondary Witness:

Sensor	Offset (ft)	Schematic	Description	Length (ft)	O.D. (in)	Weight (lb)
GR	40.33		GR-M&W (102)	3.00	3.50	50.00
CNLSC CNSSC	37.23 36.48		CNT-M&W (207)	5.00	3.50	100.00
LSD DCAL SSD	28.18 28.17 27.68		CDL-M&W (307-11)	8.50	4.00	250.00
MCAL MI MN	19.58 19.58 19.58		ML-PSIML (401)	7.58	4.00	65.00
RLL3F RLL3	15.50 15.50					
CILD	8.33		DIL-M&W (507)	18.25	3.50	220.00
CILM	4.50					
SP	0.20					

Dataset: brito\_tlm 1-15.db: field/well/stkml/pass4.5  
 Total length: 42.33 ft  
 Total weight: 685.00 lb  
 O.D.: 4.00 in

# Log Variables

DatabaseC:\ProgramData\Warrior\Data\brito\_tlm 1-15.db  
 Dataset field/well/stkml/pass4.5/\_vars\_

## Top - Bottom

BOREID in 7.875	BOTTEMP degF 126	CASEOD in 5.5	CASETHCK in 0	FLUIDDEN g/cc 1	MATRXDEN g/cc 2.71	NPORSEL Limestone	PERFS No
SNDERR mmho/m 0	SNDERRM mmho/m 0	SPSHIFT mV 440	SRFTEMP degF 60	SZCOR Off	TDEPTH ft 4951		

## Variable Description

BOREID : Borehole I.D.  
 BOTTEMP : Bottom Hole Temperature  
 CASEOD : Casing O.D.  
 CASETHCK : Casing Thickness  
 FLUIDDEN : Fluid Density  
 MATRXDEN : Matrix Density  
 NPORSEL : Neutron Porosity Curve Select

PERFS : Perforation Flag  
 SNDERR : Deep Sonde Error Correction  
 SNDERRM : Medium Sonde Error Correction  
 SPSHIFT : S.P. Baseline Offset  
 SRFTEMP : Surface Temperature  
 SZCOR : CN Size Cor. ?  
 TDEPTH : Total Depth



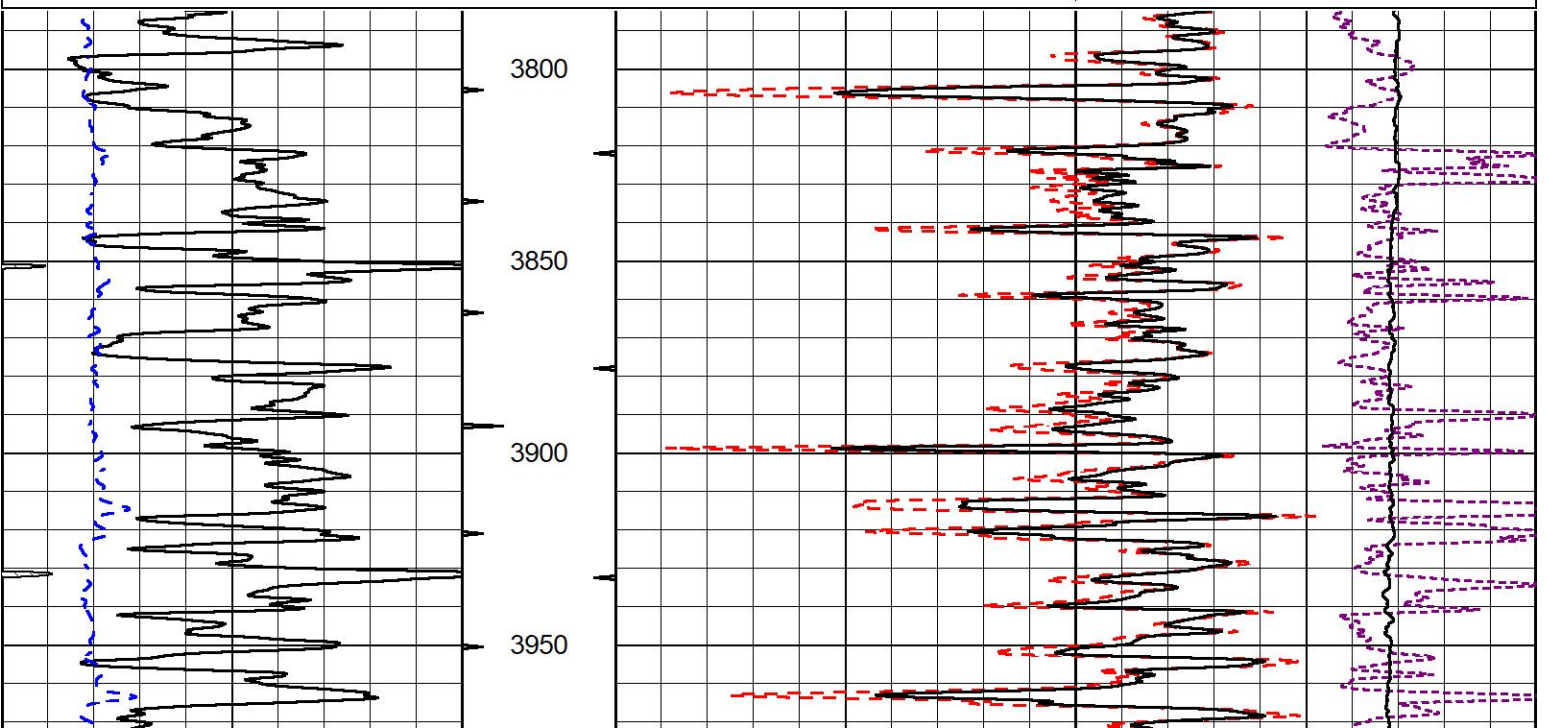
MIDWEST WIRELINE

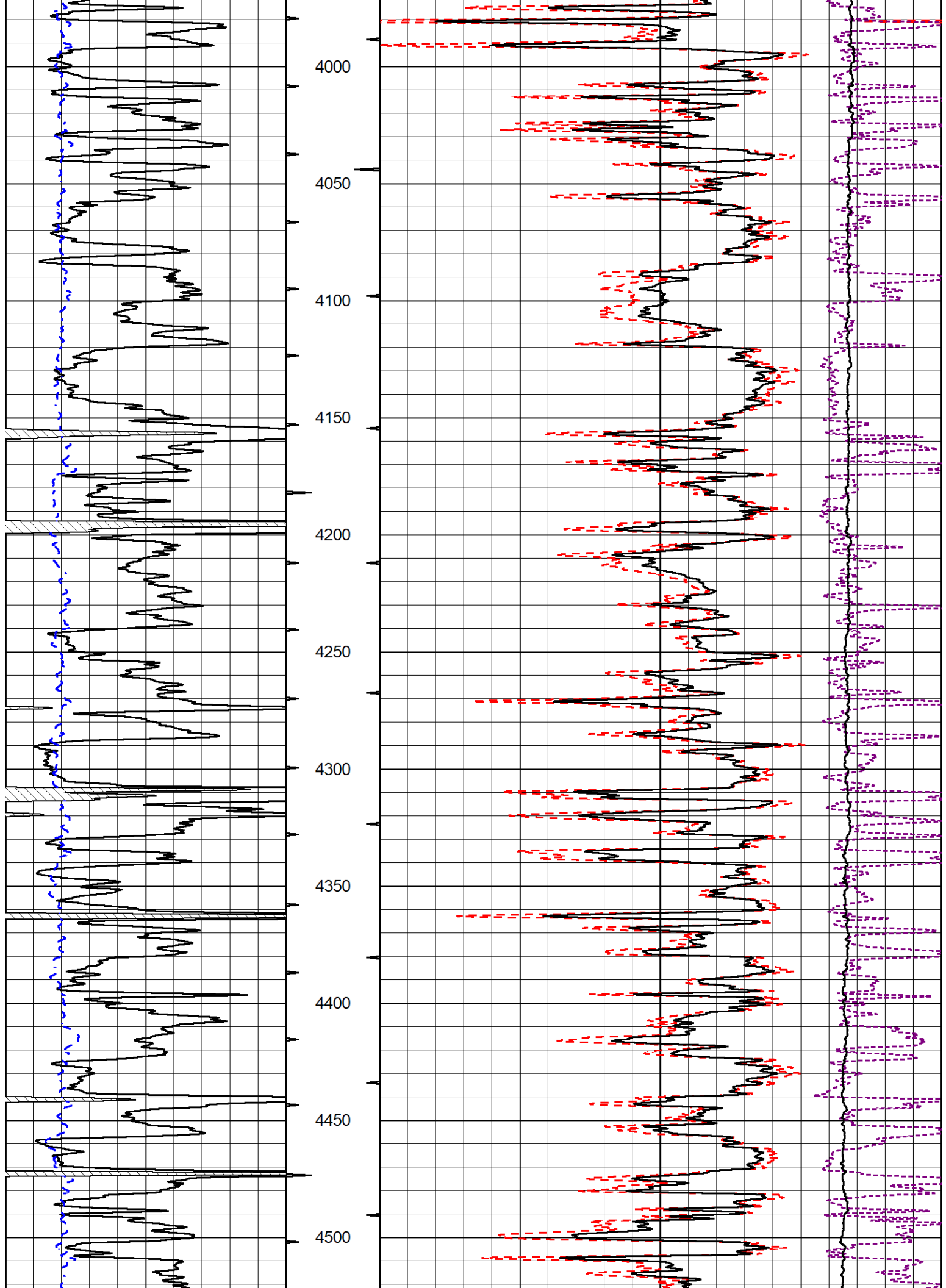
## 2" SCALE BULK DENSITY

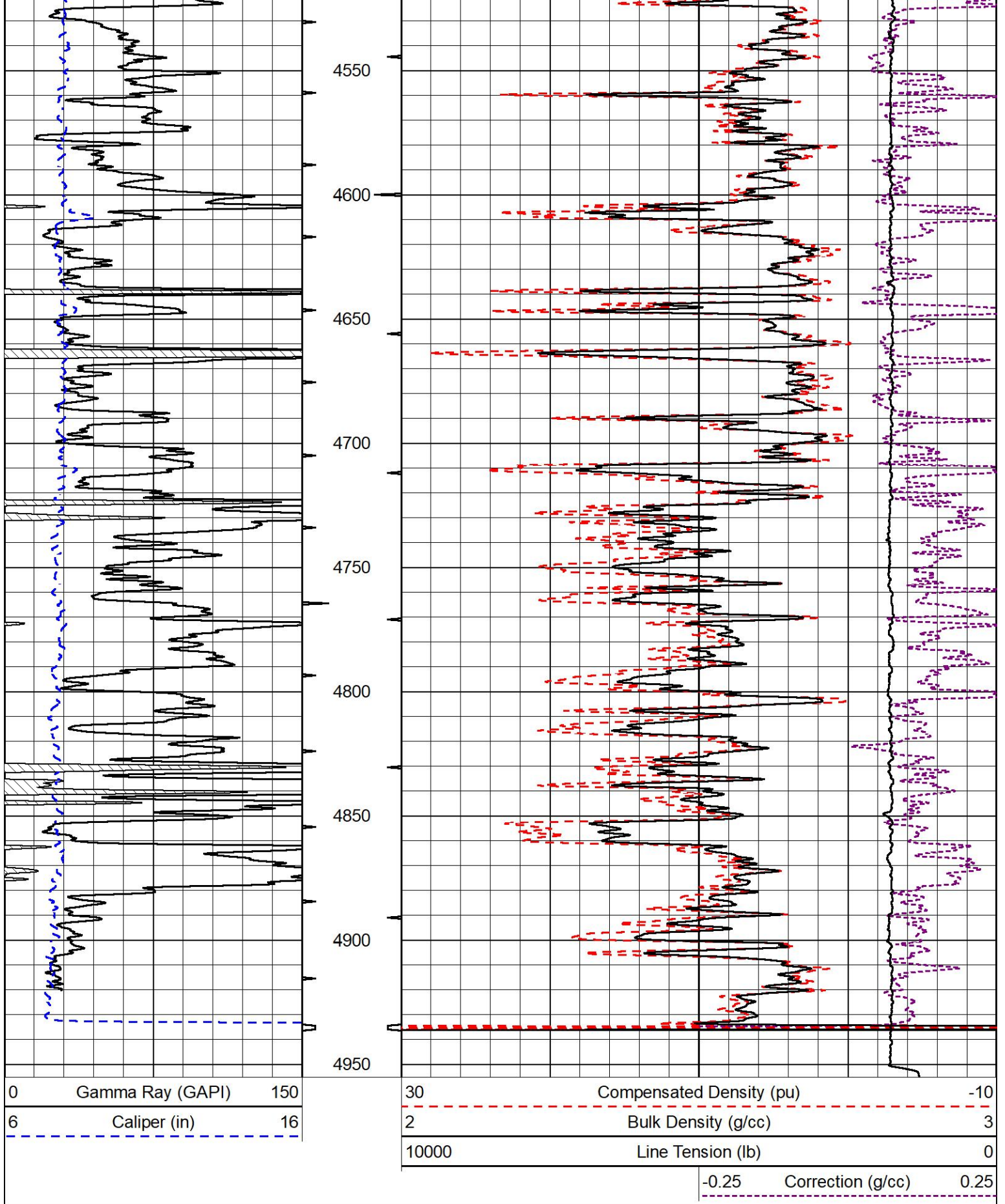
### MAIN PASS

Database File       brito\_tlm 1-15.db  
 Dataset Pathname   stkml/pass4.2  
 Presentation Format   \_cdl  
 Dataset Creation    Wed Sep 27 05:43:32 2023  
 Charted by         Depth in Feet scaled 1:600

0	Gamma Ray (GAPI)	150	30	Compensated Density (pu)	-10	
6	Caliper (in)	16	2	Bulk Density (g/cc)	3	
			10000	Line Tension (lb)	0	
				-0.25	Correction (g/cc)	0.25





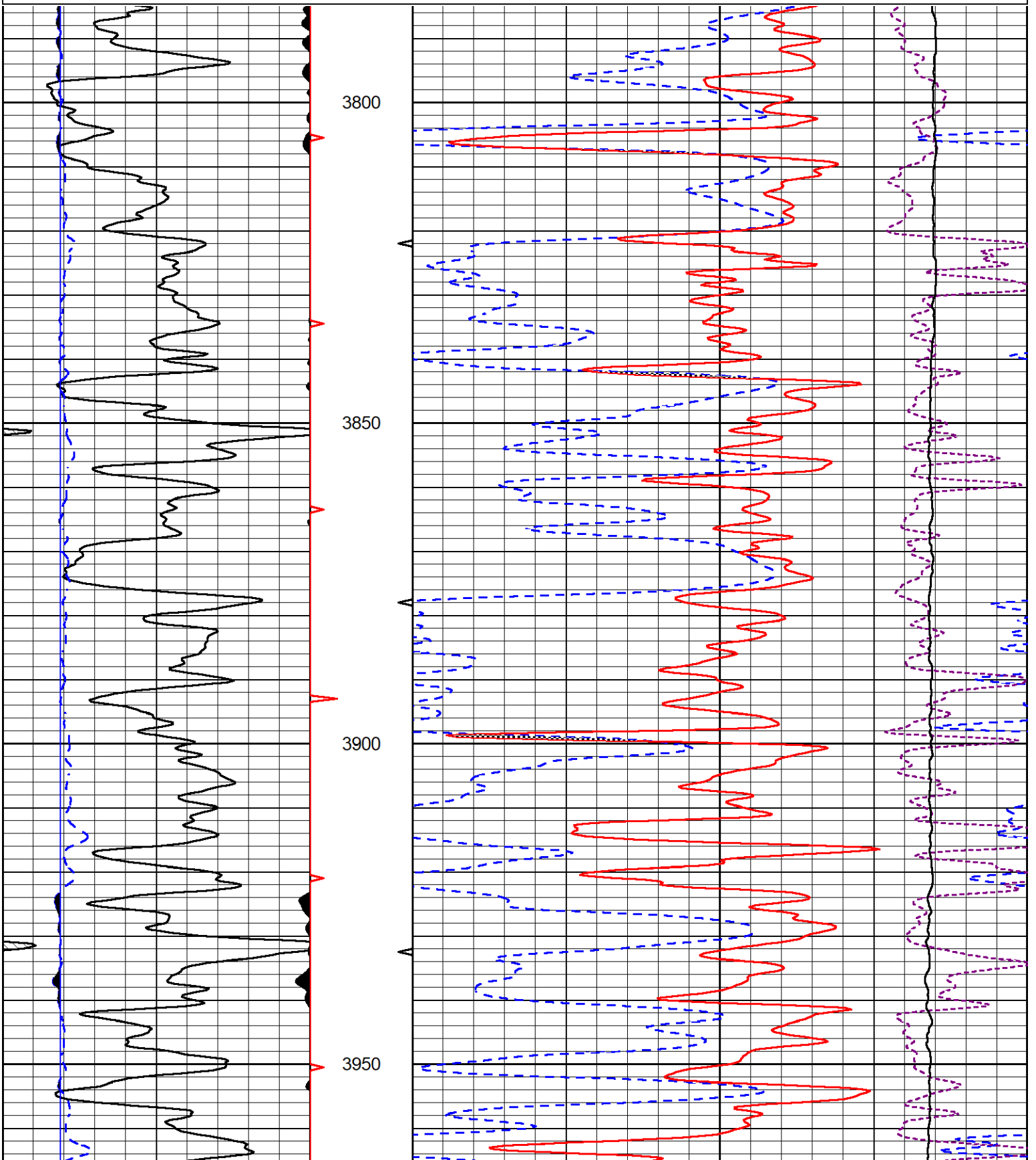


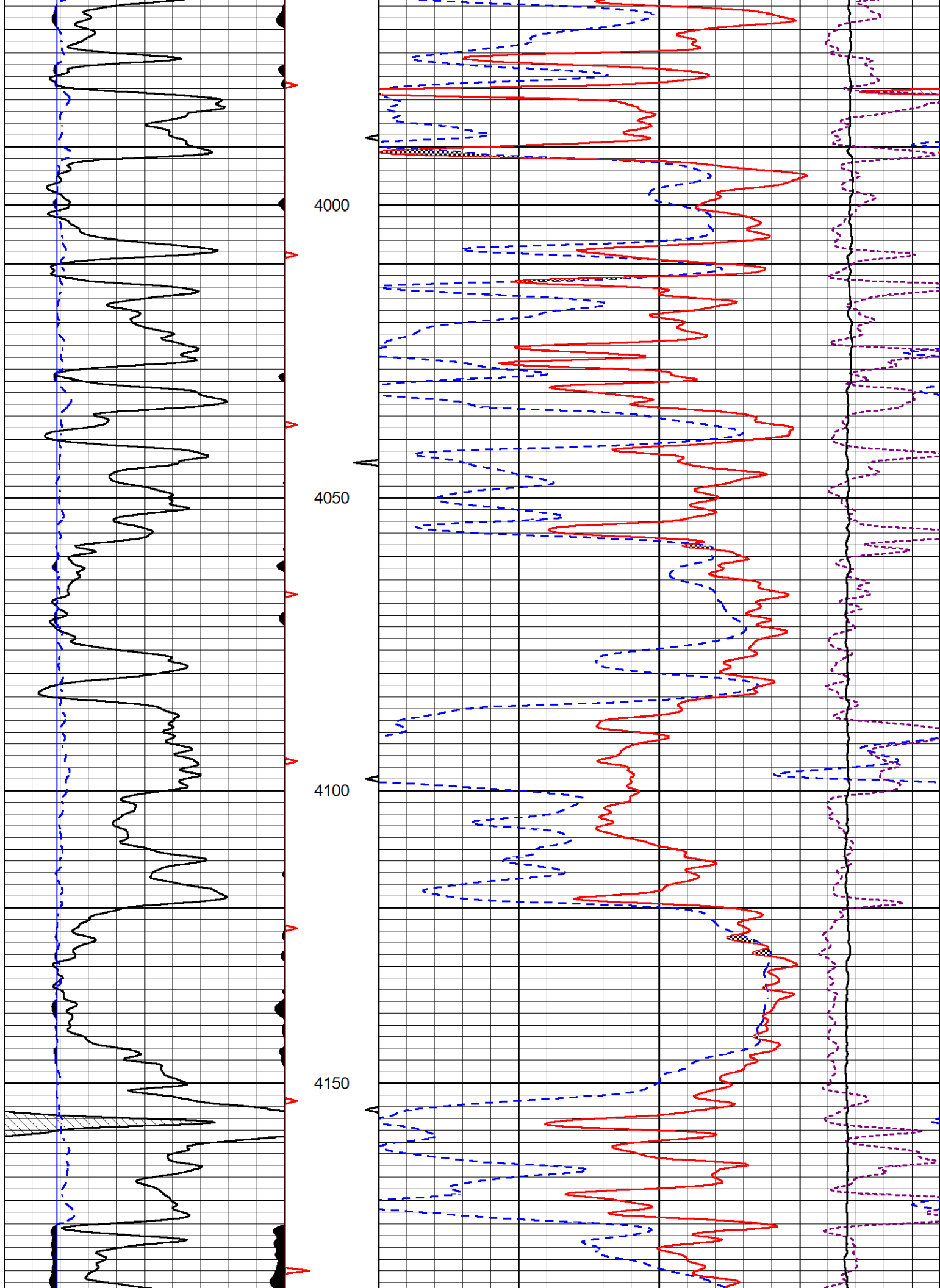
# DETAIL SECTION

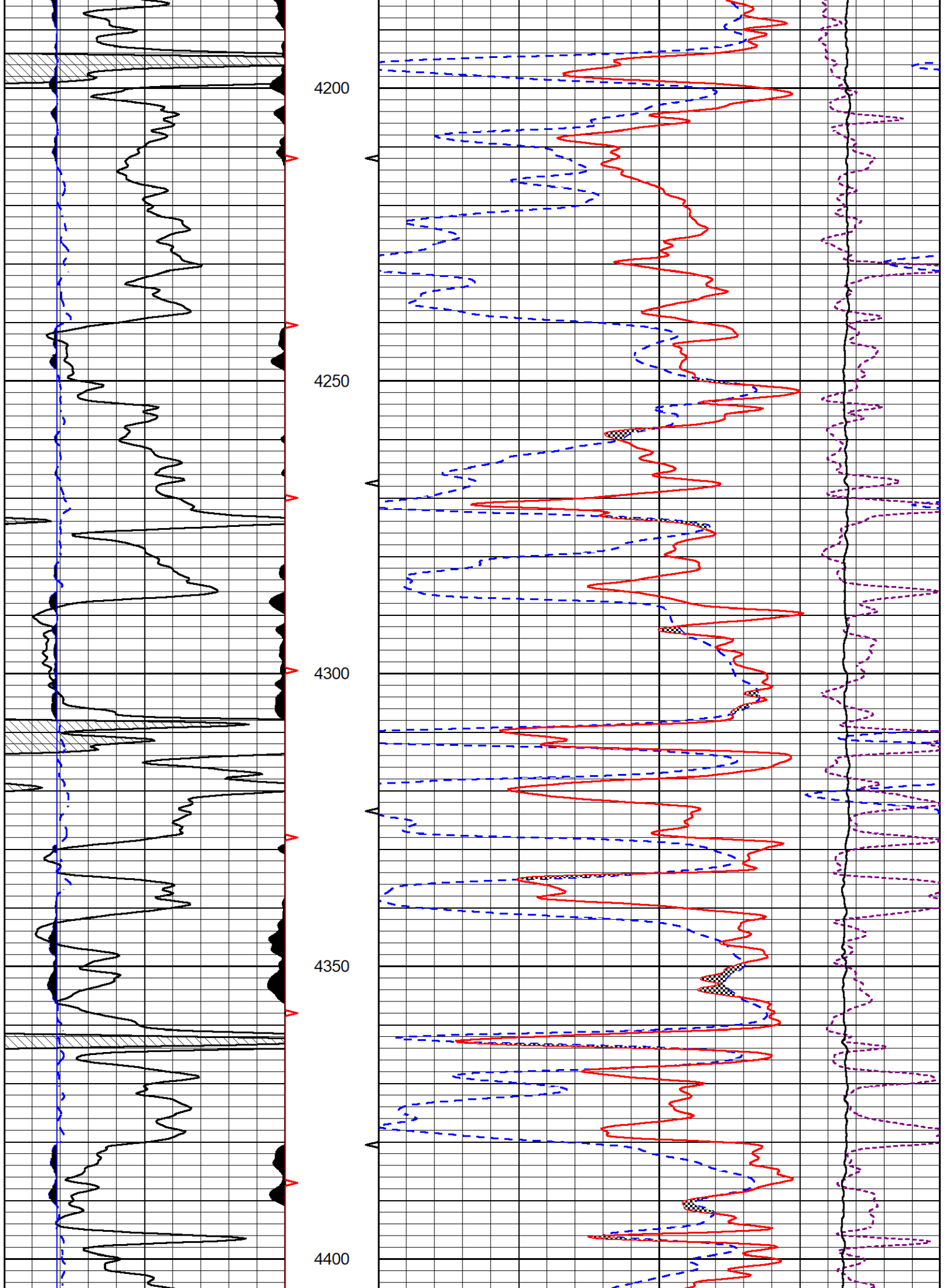
MAIN PASS

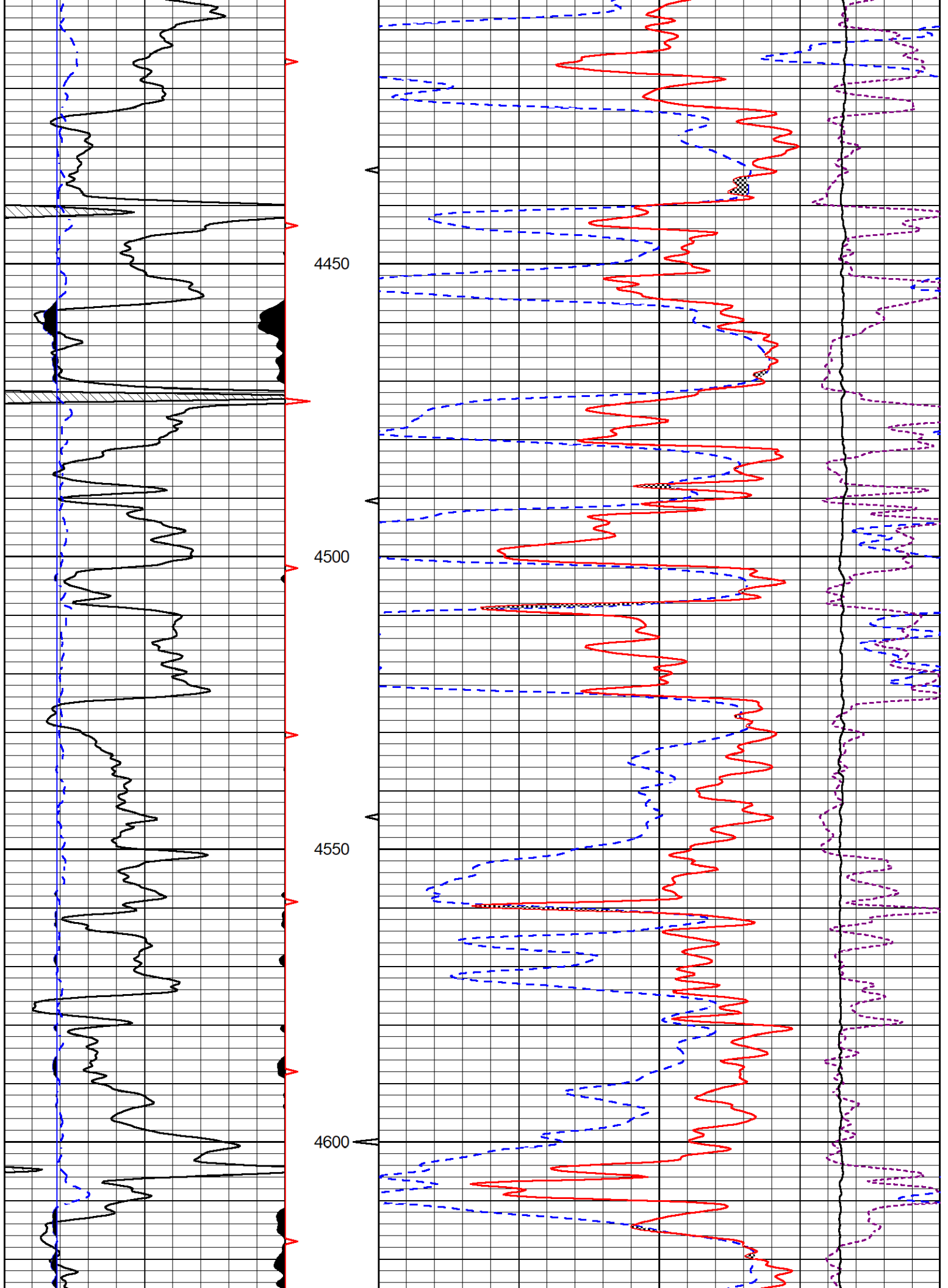
Database File     brito\_tlm 1-15.db  
 Dataset Pathname   stkml/pass4.5  
 Presentation Format   \_CNDLS~1  
 Dataset Creation    Wed Sep 27 05:43:45 2023  
 Charted by         Depth in Feet scaled 1:240

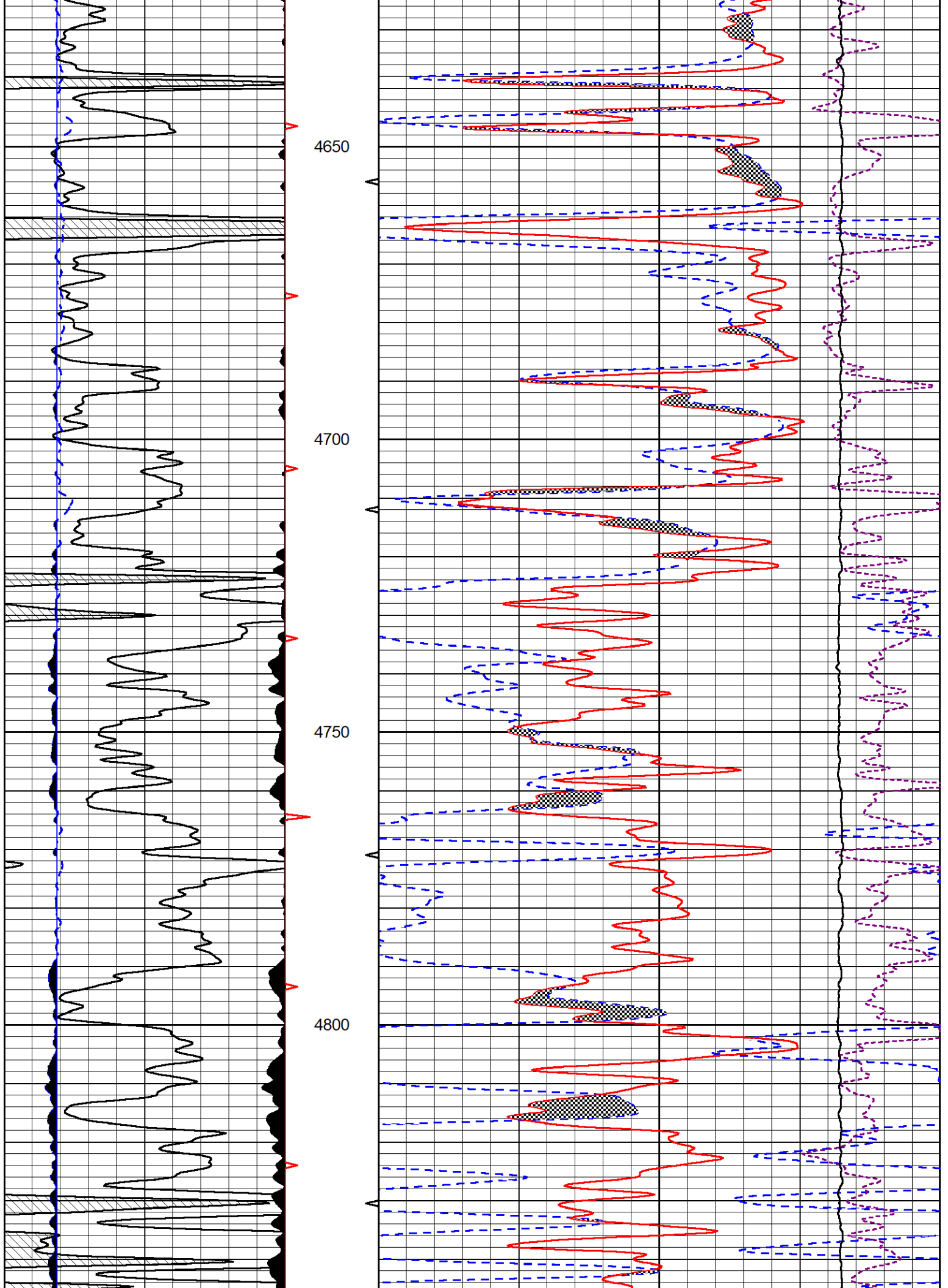
0	Gamma Ray (GAPI)	150	30	Compensated Neutron (pu)	-10	
6	Caliper (in)	16	30	Compensated Density (pu)	-10	
2.875	DCAL (in)	7.875	10000	Line Tension (lb)	0	
				-0.25	Correction (g/cc)	0.25

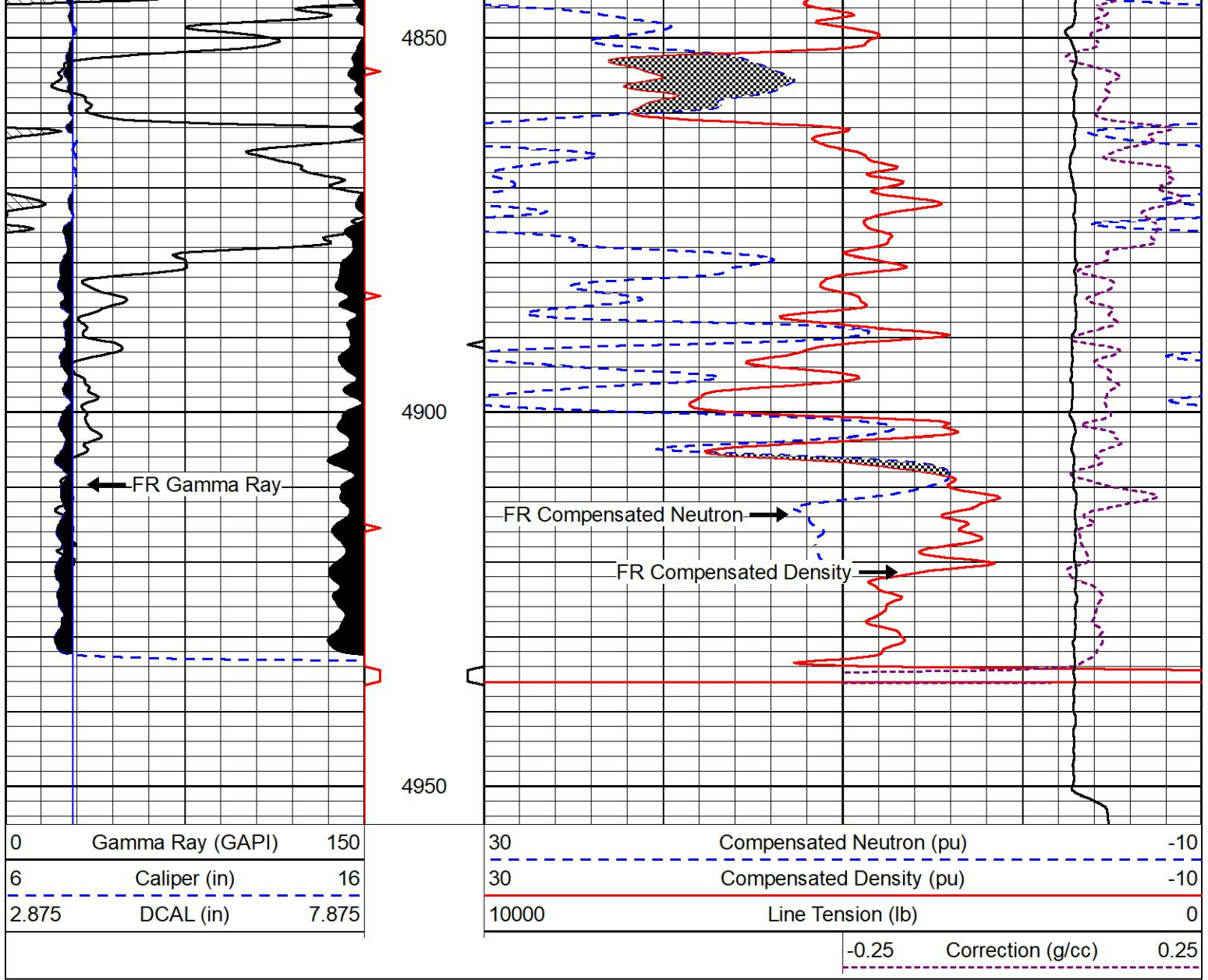








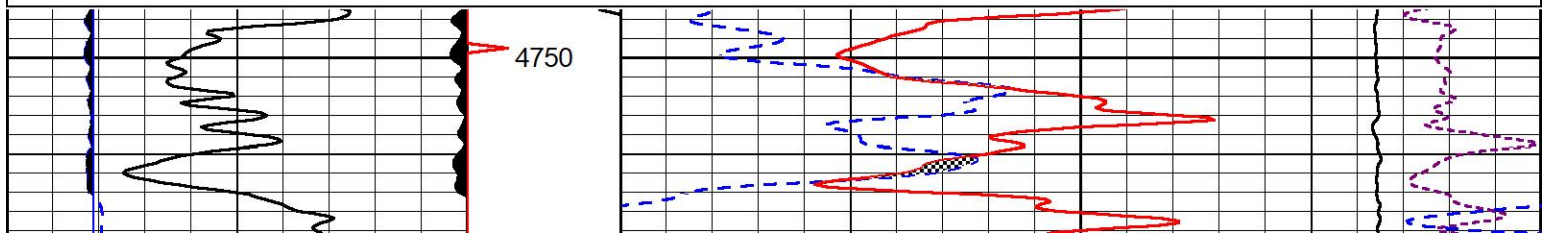
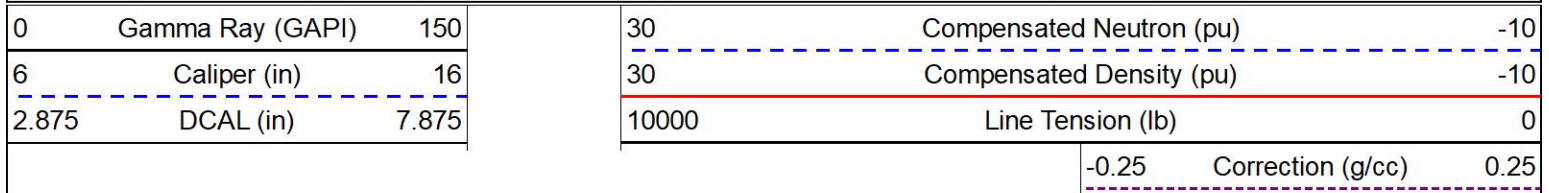


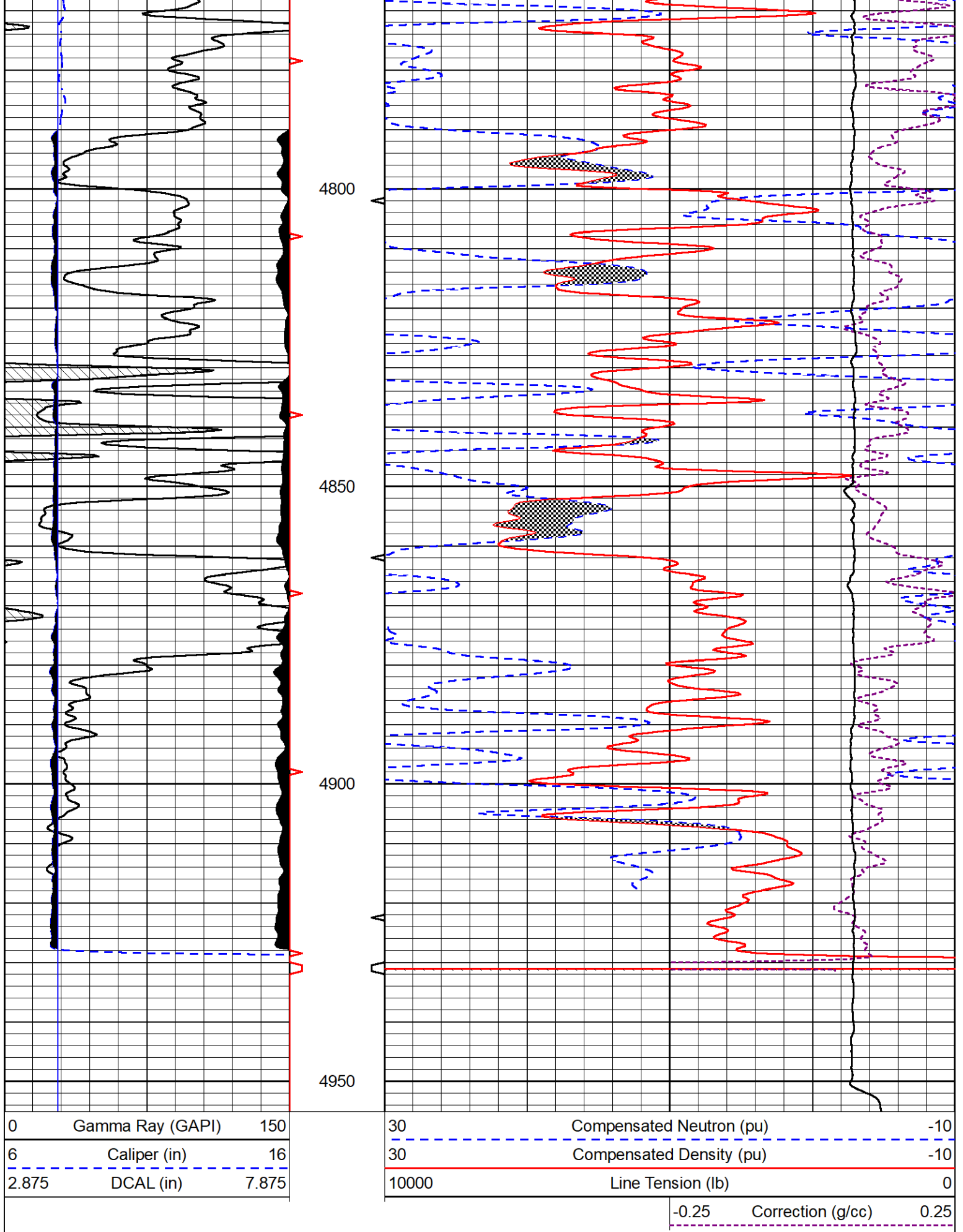


# REPEAT SECTION

## REPEAT PASS

Database File      brito\_tlm 1-15.db  
 Dataset Pathname    stkml/pass2.1  
 Presentation Format    \_CNDLS~1  
 Dataset Creation      Wed Sep 27 05:26:04 2023  
 Charted by            Depth in Feet scaled 1:240







MIDWEST WIRELINE

Company	Brito Oil Company, Inc.
Well	TLM #1-15
Field	
County	Rawlins
State	Kansas