

OPERATOR

Company: Thomas Garner, Inc.
 Address: 20 NE 20th Avenue
 St. John, KS 67576

Contact Geologist:
 Contact Phone Nbr: 620-793-0766
 Well Name: Ripcord #1-14
 Location: Sec. 14 - T26S - R14W
 API: 15-151-22569-0000
 Pool:
 State: Kansas

Field: Moore Southwest
 Country: USA



Scale 1:240 Imperial

Well Name:	Ripcord #1-14	
Surface Location:	Sec. 14 - T26S - R14W	
Bottom Location:		
API:	15-151-22569-0000	
License Number:	33406	
Spud Date:	7/20/2023	Time: 9:45 PM
Region:	Pratt County	
Drilling Completed:	7/28/2023	Time: 8:40 PM
Surface Coordinates:	1480' FNL & 2156' FWL	
Bottom Hole Coordinates:		
Ground Elevation:	1977.00ft	
K.B. Elevation:	1988.00ft	
Logged Interval:	2800.00ft	To: 4442.00ft
Total Depth:	4442.00ft	
Formation:	Simpson	
Drilling Fluid Type:	Chemical/Fresh Water Gel	

SURFACE CO-ORDINATES

Well Type: Vertical
 Longitude: -98.823108
 Latitude: 37.787914
 N/S Co-ord: 1480' FNL
 E/W Co-ord: 2156' FWL

LOGGED BY

Keith Reavis
Consulting Geologist

Company: Keith Reavis, Inc.
 Address: 3420 22nd Street
 Great Bend, KS 67530

Phone Nbr: 620-617-4091
 Logged By: KLG #136

Name: Keith Reavis

CONTRACTOR

Contractor: Sterling Drilling Company
 Rig #: 4

Rig Type: mud rotary
 Spud Date: 7/20/2023
 TD Date: 7/28/2023

Time: 9:45 PM

Time: 8:40 PM

ELEVATIONS

K.B. Elevation: 1988.00ft
K.B. to Ground: 11.00ft

Ground Elevation: 1977.00ft

NOTES

After evaluation of drill stem tests and electrical logs, it was decided to run 5 1/2" productions casing and further test the Kinderhook sand through perforations and stimulation.

A Tooke Daq gas detection system operated by Sterling Drilling was employed during the drilling of this well. ROP and gas data, as well as gamma ray and caliper curves from the electrical log suite were imported into this log.

Samples were saved and will be available for review at the Kansas Geological Survey Well Sample Library.

Respectfully submitted,
Keith Reavis

daily drilling report


DATE	7:00 AM DEPTH	REMARKS
07/24/2023		Geologist Keith Reavis on duty @ 2220 hrs, 3446 ft, drilling ahead Topeka Section
07/25/2023	3801	drilling Topeka, Heebner, Toronto, Douglas, Brown Lime, Lansing, show and gas kick in "H" zone warrants test, short trip, TOH w/bit and in with tools, conducting DST #1
07/26/2023	3982	complete DST #1, successful test, got stuck @ 2803' TIH w/bit, spot oil, got loose, ran to bottom, recondition mud, resume drilling, lower LKC, BKC, Marmaton, Conglomerate
07/27/2023	4304	drilling Miss chert, Kinderhook, sand has show and kick that warrants test, short trip, tight @ 2803' again, ctch, TOH for DST #2, TIH w/tools, conduct and complete DST #2, successful test, TIH w/bit, resume drilling Kinderhook Shale
07/28/2023	4422	drilling Kinderhook, Viola, Simpson, show in sand warrants test, TOH for DST #3, conduct and complete DST #3, successful test, TIH w/bit, rathole To 4442 ft, TD @ , condition hole, TOH for logs, conduct wireline operations
07/29/2023	4442	complete logging operations, geologist off location 0700

well comparison sheet

DRILLING WELL					COMPARISON WELL				COMPARISON WELL			
Ripecord #1-14					Raymond - Warren #2				Champlin - Mary Moore #2			
1480' FNL & 2156' FWL					SE NE NE				NW NE SW			
Sec 14-T26S-R14W					Sec 14-T26S-R14W				Sec 14-T26S-R14W			
1988 KB					1980 KB		Structural Relationship		1989 KB		Structural Relationship	
Formation	Sample	Sub-Sea	Log	Sub-Sea	Log	Sub-Sea	Sample	Log	Log	Sub-Sea	Sample	Log
Heebner	3645	-1657	3646	-1658	3640	-1660	3	2	3654	-1665	8	7
Toronto	3666	-1678	3667	-1679	3660	-1680	2	1	3676	-1687	9	8
Douglas	3688	-1700	3685	-1697	3685	-1705	5	8	3698	-1709	9	12
Brown Lime	3795	-1807	3796	-1808	3800	-1820	13	12	3810	-1821	14	13
Lansing	3826	-1838	3829	-1841	3826	-1846	8	5	3842	-1853	15	12
Stark Shale	4083	-2095	4084	-2096	4081	-2101	6	5	4094	-2105	10	9
BKC	4134	-2146	4136	-2148	4132	-2152	6	4	4146	-2157	11	9
Conglomerate	4209	-2221	4210	-2222	4212	-2232	11	10	4224	-2235	14	13
Mississippian	4240	-2252	4243	-2255	4235	-2255	3	0	4264	-2275	23	20
Kinderhook Sd	4284	-2296	4286	-2298	4286	-2306	10	8	4300	-2311	15	13
Viola	4340	-2352	4346	-2358	4340	-2360	8	2	4337	-2348	-4	-10
Simpson Sand	4404	-2416	4404	-2416	nr				nr			
Total Depth	4442	-2454	4443	-2455	4365	-2385	-69	-70	4350	-2361	-93	-94

viola top questionable

Drill Stem Test #1

	DRILL STEM TEST REPORT	
	Thomas Garner Inc	14-26S-14W Pratt



TESTING, INC

20 NE 20th Ave
St. John, KS 67576

ATTN: Keith Reavis

Ripcord 1-14

Job Ticket: 70683

DST#: 1

Test Start: 2023.07.25 @ 19:11:00

GENERAL INFORMATION:

Formation: **Lansing "H"**

Deviated: No Whipstock ft (KB)

Time Tool Opened: 21:37:17

Time Test Ended: 00:45:02

Test Type: Conventional Bottom Hole (Initial)

Tester: Leal Cason

Unit No: 72

Interval: 3962.00 ft (KB) To 3982.00 ft (KB) (TVD)

Total Depth: 3982.00 ft (KB) (TVD)

Hole Diameter: 7.88 inches - hole Condition: Good

Reference Elevations: 1988.00 ft (KB)

1977.00 ft (CF)

KB to GR/CF: 11.00 ft

Serial #: 8372

Inside

Press@RunDepth: 24.76 psig @ 3968.00 ft (KB)

Start Date: 2023.07.25

End Date: 2023.07.26

Start Time: 19:11:00

End Time: 00:45:02

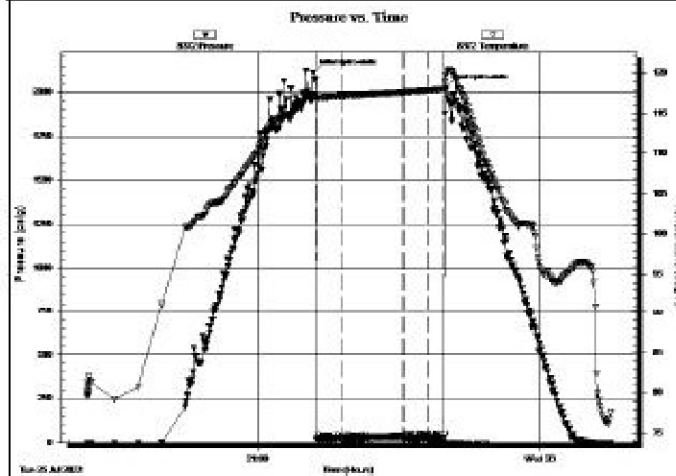
Capacity: psig

Last Calib.: 2023.07.26

Time On Btm: 2023.07.25 @ 21:35:17

Time Off Btm: 2023.07.25 @ 22:59:47

TEST COMMENT: IF: Weak 1.2" Blow
IST: No Blow Back
FF: No Blow
FSI: No Blow Back



PRESSURE SUMMARY

Time (Mn.)	Pressure (psig)	Temp (deg F)	Annotation
0	211.28	117.28	Initial Hydro-static
2	18.80	116.94	Open To Flow (1)
18	24.64	117.10	Shut-In(1)
58	33.03	117.58	End Shut-In(1)
58	23.67	117.58	Open To Flow (2)
73	24.76	117.83	Shut-In(2)
84	26.10	118.00	End Shut-In(2)
85	2027.13	119.72	Final Hydro-static

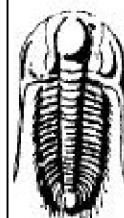
Recovery

Length (ft)	Description	Volume (bbl)
2.00	Mud	0.01

Gas Rates

Choke (inches)	Pressure (psig)	Gas Rate (M dsc)

Drill Stem Test #2



TRILOBITE TESTING, INC

DRILL STEM TEST REPORT

Thomas Garner Inc

14-26S-14W Pratt

20 NE 20th Ave
St. John, KS 67576

Ripcord 1-14

Job Ticket: 70684

DST#: 2

ATTN: Keith Reavis

Test Start: 2023.07.27 @ 10:28:00

GENERAL INFORMATION:

Formation: **Kinderhook**

Deviated: No Whipstock ft (KB)

Time Tool Opened: 12:13:32

Time Test Ended: 18:32:02

Test Type: Conventional Bottom Hole (Reset)

Tester: Leal Cason

Unit No: 72

Interval: 4274.00 ft (KB) To 4304.00 ft (KB) (TVD)
 Total Depth: 4304.00 ft (KB) (TVD)
 Hole Diameter: 7.88 inches Hole Condition: Good

Reference Elevations: 1988.00 ft (KB)
 1977.00 ft (CF)
 KB to GR/CF: 11.00 ft

Serial #: 8372

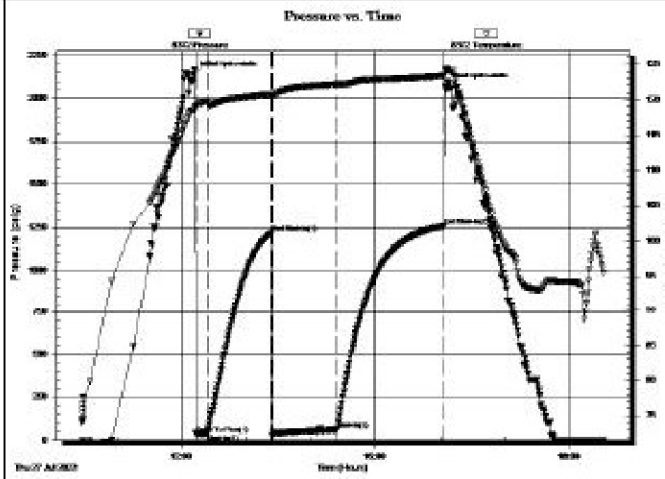
Inside

Press@RunDepth: 62.06 psig @ 4280.00 ft (KB)
 Start Date: 2023.07.27 End Date: 2023.07.27
 Start Time: 10:28:00 End Time: 16:32:02

Capacity: psig
 Last Calib.: 2023.07.27
 Time On Btm: 2023.07.27 @ 12:11:47
 Time Off Btm: 2023.07.27 @ 16:05:17

TEST COMMENT: IF: Fair Blow , BOB in 7 minutes, Built to 18.4"
 IS: No Blow Back
 FF: Strong Blow , BOB Immediate, Built to 196.36"
 FSI: No Blow Back

PRESSURE SUMMARY



Time (Mn.)	Pressure (psig)	Temp (deg F)	Annotation
0	214.92	118.56	Initial Hydro-static
2	38.45	118.92	Open To Flow(1)
12	38.74	119.80	Shut-In(1)
73	1218.68	120.75	End Shut-In(1)
73	26.48	120.61	Open To Flow(2)
133	62.06	122.23	Shut-In(2)
233	1258.66	123.45	End Shut-In(2)
234	207.143	124.38	Final Hydro-static

Recovery

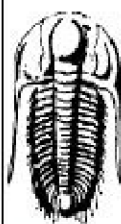
Length (ft)	Description	Volume (bbl)
0.00	2125 GP	0.00
60.00	GOCM 20%G 20%MO60%M	0.30
15.00	GOCM 5%G 10%O 85%M	0.07

* Recovery from multiple tests

Gas Rates

	Choke (inches)	Pressure (psig)	Gas Rate (M dcf)

Drill Stem Test #3



TRILOBITE TESTING, INC.

DRILL STEM TEST REPORT

Thomas Garner Inc
 20 NE 20th Ave
 St. John, KS 67576
 ATTN: Keith Reavis

14-26S-14W Pratt
 Ripcord 1-14
 Job Ticket: 70685 DST#: 3
 Test Start: 2023.07.28 @ 09:14:00

GENERAL INFORMATION:

Formation: Simpson
 Deviated: No Whipstock ft (KB)
 Time Tool Opened: 10:48:32
 Time Test Ended: 15:34:02

Test Type: Conventional Bottom Hole (Reset)
 Tester: Leal Cason
 Unit No: 72

Interval: 4390.00 ft (KB) To 4422.00 ft (KB) (TVD)
 Total Depth: 4422.00 ft (KB) (TVD)
 Hole Diameter: 7.88 inches Hole Condition: Good

Reference Elevations: 1988.00 ft (KB)
 1977.00 ft (CF)
 KB to GR/CF: 11.00 ft

Serial #: 8372

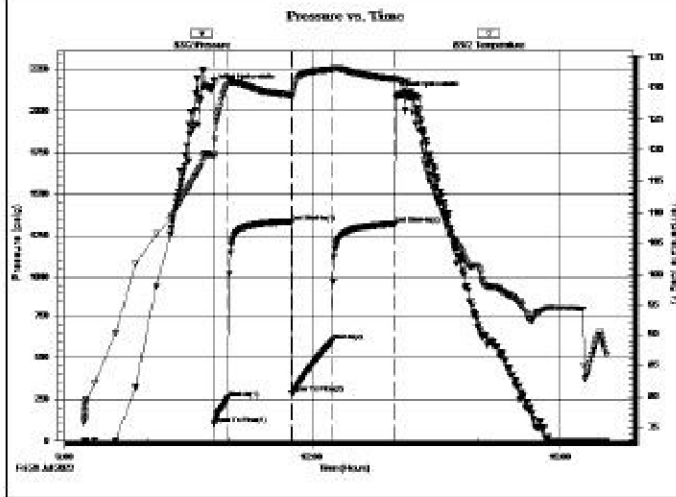
Inside

Press@RunDepth: 602.37 psig @ 4396.00 ft (KB)
 Start Date: 2023.07.28 End Date: 2023.07.28
 Start Time: 09:14:00 End Time: 15:34:02

Capacity: psig
 Last Calib.: 2023.07.28
 Time On Btm: 2023.07.28 @ 10:47:17
 Time Off Btm: 2023.07.28 @ 13:01:32

TEST COMMENT: IF: Strong Blow , BOB in 4 minutes, Built to 34.91"

IST: No Blow Back
 FF: Strong Blow, BOB in 4 minutes, Built to 87.97"
 FSI: .78" Blow Back



PRESSURE SUMMARY

Time (Mn.)	Pressure (psig)	Temp (deg F)	Annotation
0	2145.39	119.33	Initial Hydro-static
2	98.75	118.86	Open To Flow (1)
12	257.25	130.63	Shut-In(1)
58	1333.77	128.90	End Shut-In(1)
58	289.16	128.52	Open To Flow(2)
88	602.37	133.04	Shut-In(2)
133	1322.32	131.54	End Shut-In(2)
135	2103.61	131.52	Final Hydro-static

Recovery

Length (ft)	Description	Volume (bb)
640.00	Water	7.00
307.00	GMCW 2% G 30%M 68%W	4.31
257.00	GMCW 2% G 44%M 54%W	3.61

Gas Rates

	Choke (inches)	Pressure (psig)	Gas Rate (M cfd)

* Recovery from multiple tests

ROCK TYPES

Cht	Lmst fw<7	shale, gry	Ss
Cht vari	Lmst fw>7	Carbon Sh	Siltst
sdy lmst	shale, gm	shale, red	

ACCESSORIES

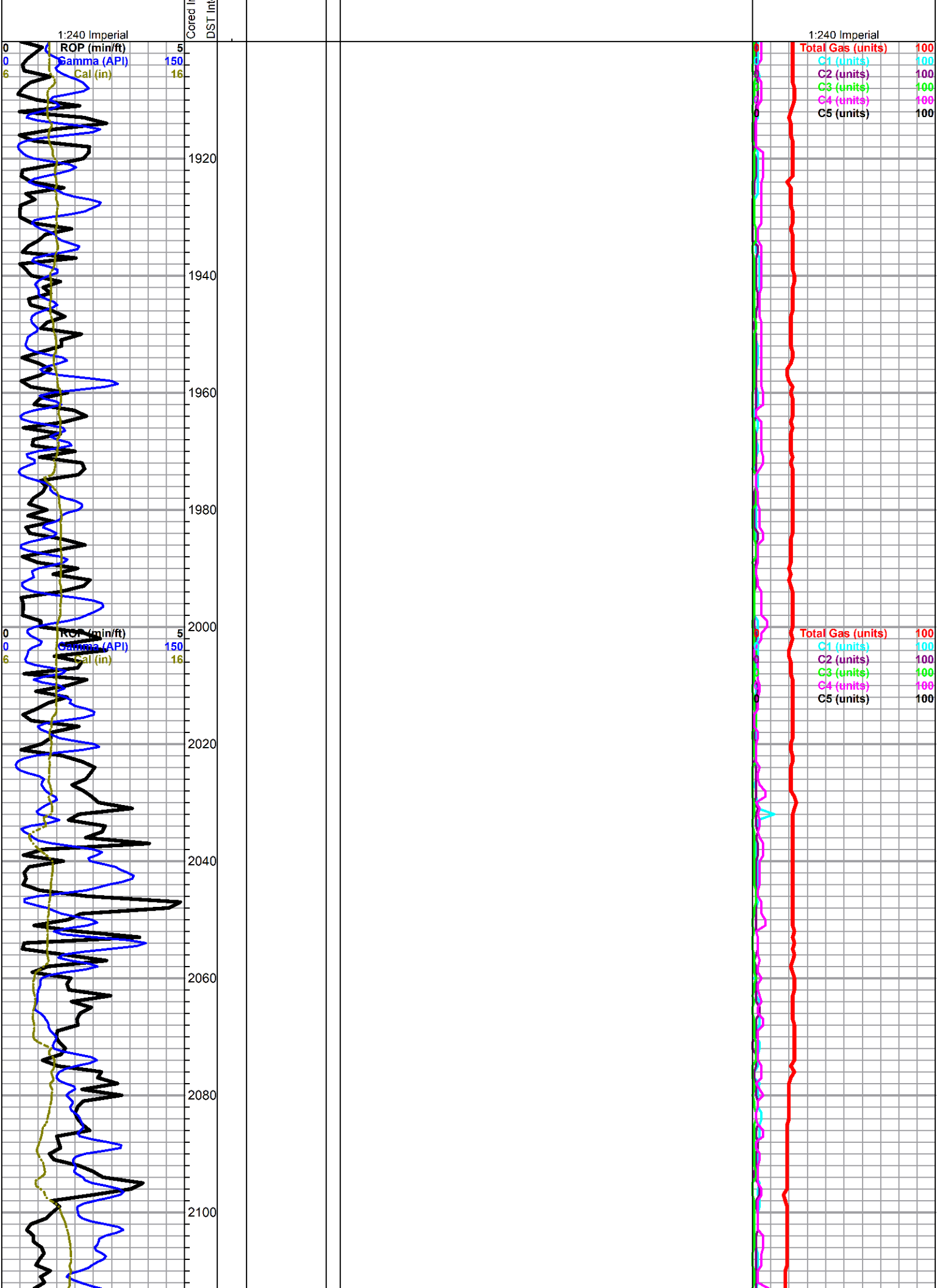
MINERAL	FOSSIL	STRINGER	TEXTURE
- Argillaceous	^ Bioclastic or Fragments	Limestone	C Chalky
▲ Chert, dark	F Fossils < 20%	Sandstone	
∟ Dolomitic	o Oolite	Siltstone	
ru Glauconite	o Pellets	green shale	
× Mineral Crystals	× Sponge Spicules	red shale	
P Pyrite	o Oomoldic		
^ Siliceous			
• Silty			
△ Chert White			
■ Argillaceous/Shale			

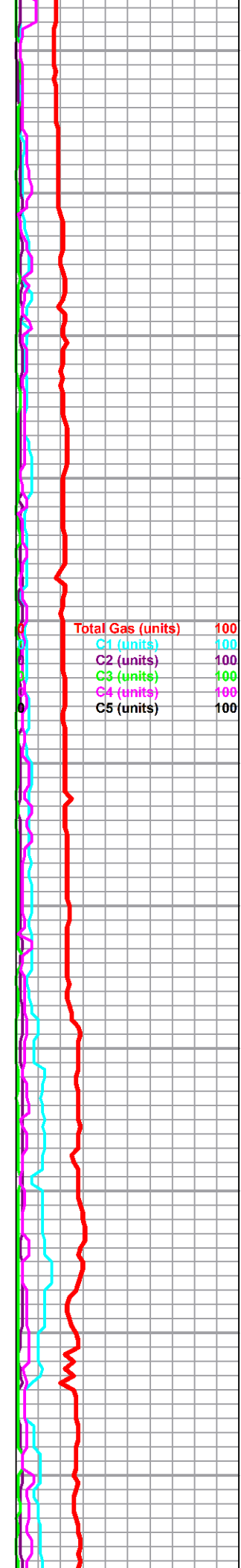
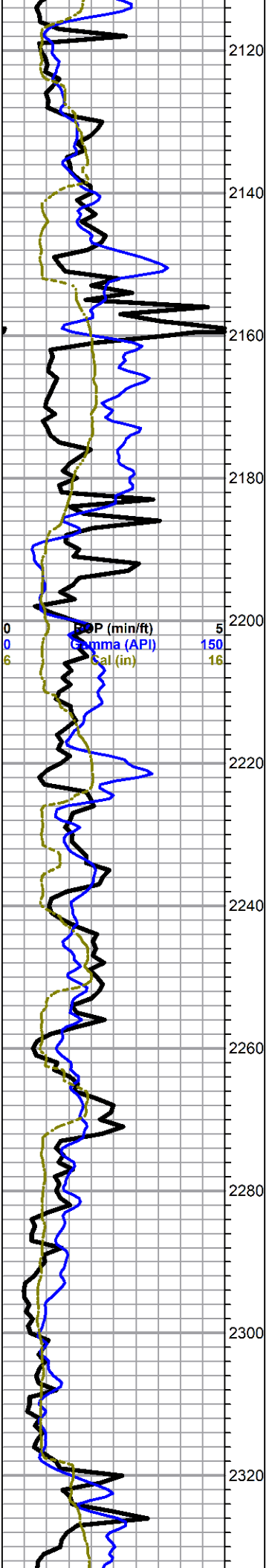
OTHER SYMBOLS

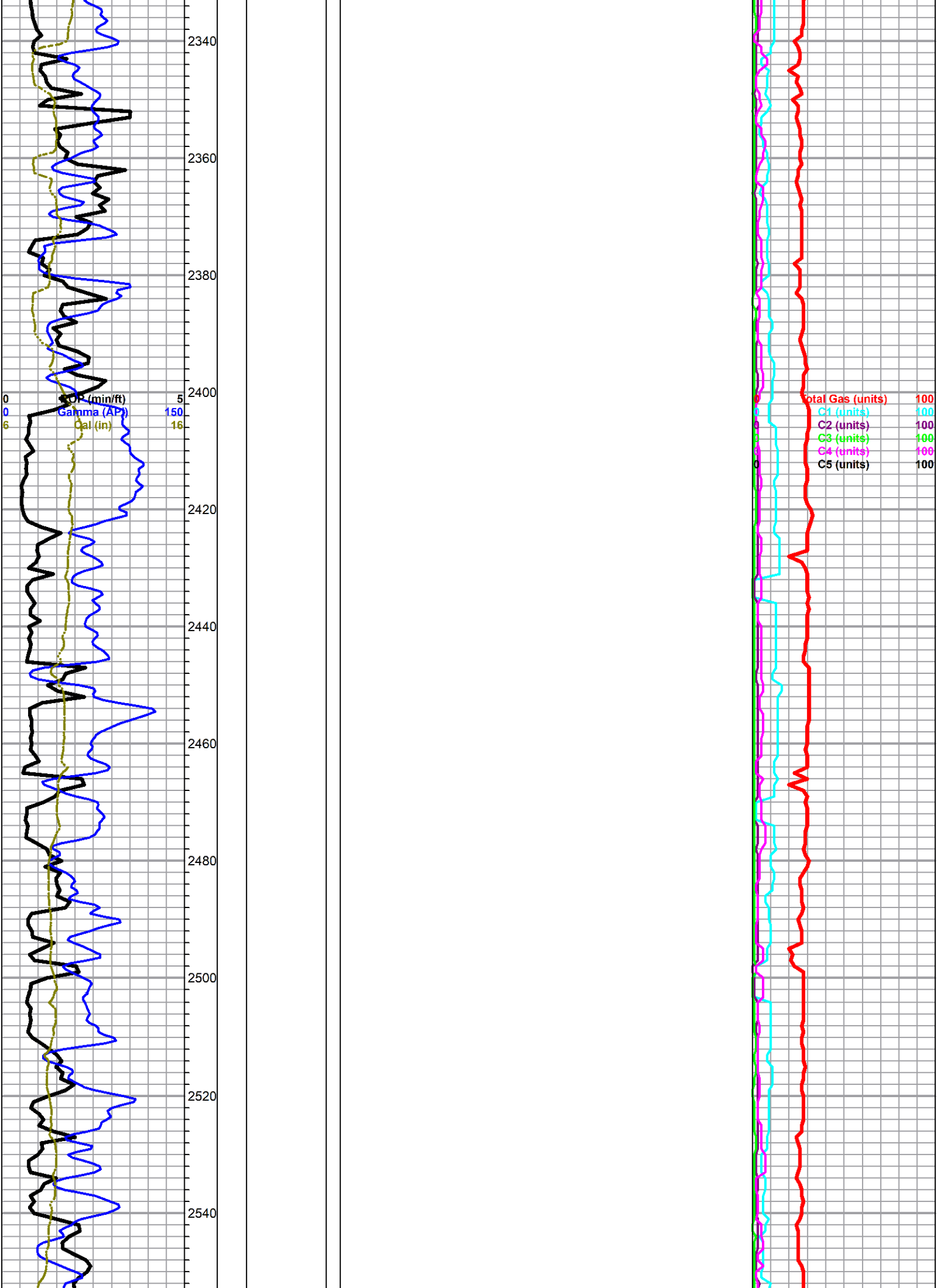
Oil Show	DST
● Good Show	DST Int
● Fair Show	DST alt
● Poor Show	Core
○ Spotted or Trace	tail pipe
○ Questionable Stn	
D Dead Oil Stn	
■ Fluorescence	
* Gas	

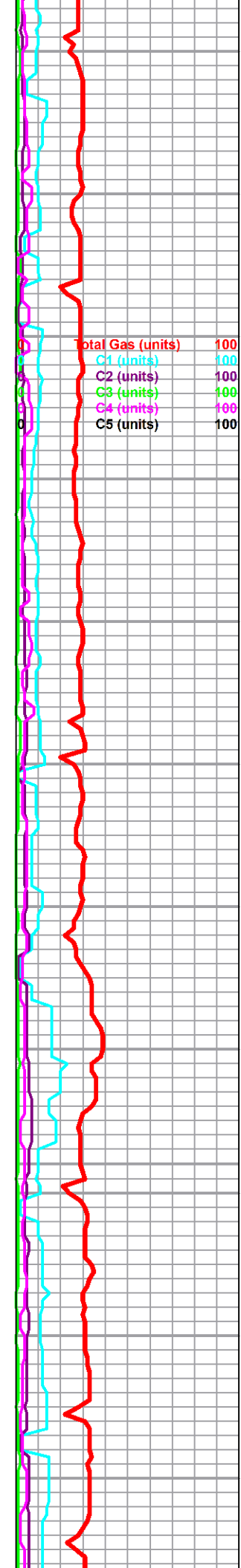
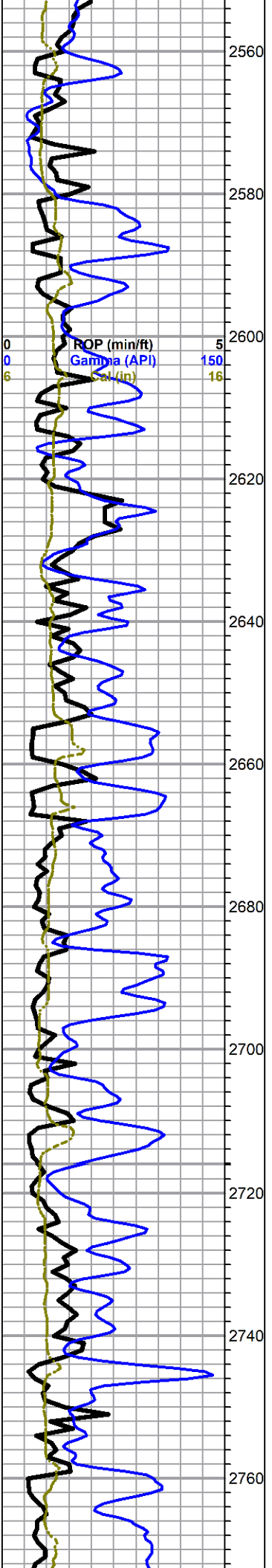
Printed by GEOstrip VC Striplog version 4.0.8.15 (www.grsi.ca)

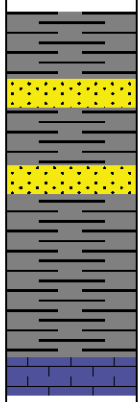
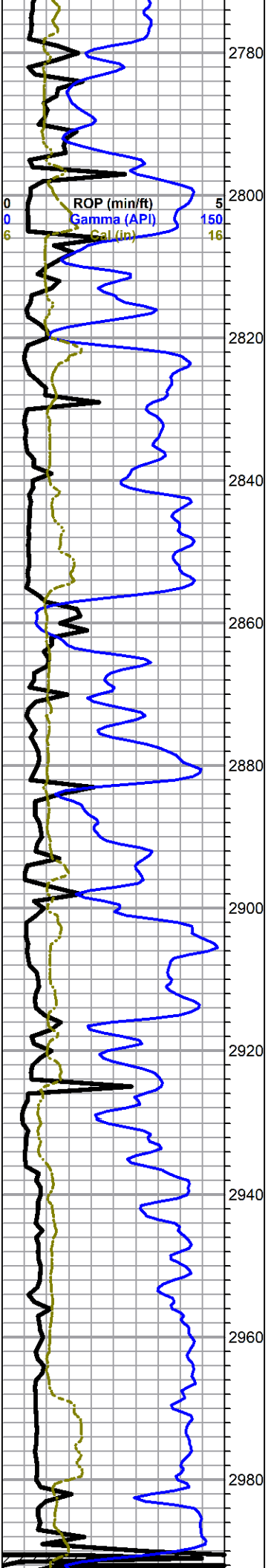
Curve Track #1	Depth Intervals	DST	Lithology	Oil Show	Geological Descriptions
ROP (min/ft)					TG, C1 - C5
Gamma (API)					Total Gas (units)
Cal (in)					C1 (units)
					C2 (units)
					C3 (units)
					C4 (units)
					C5 (units)





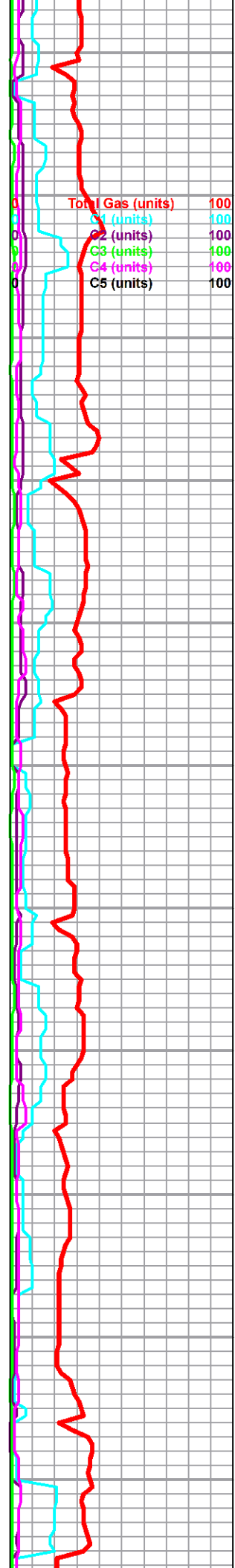


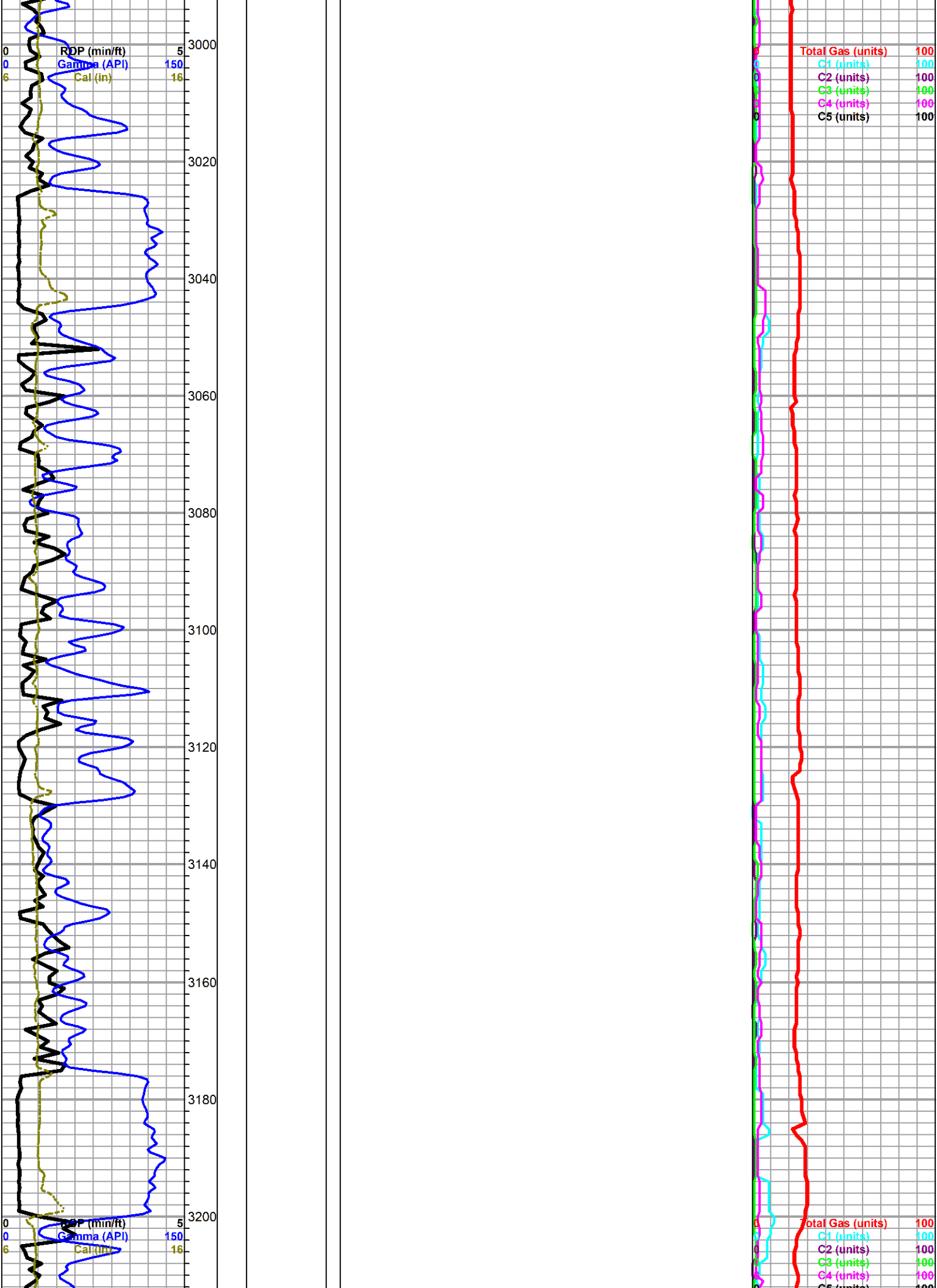


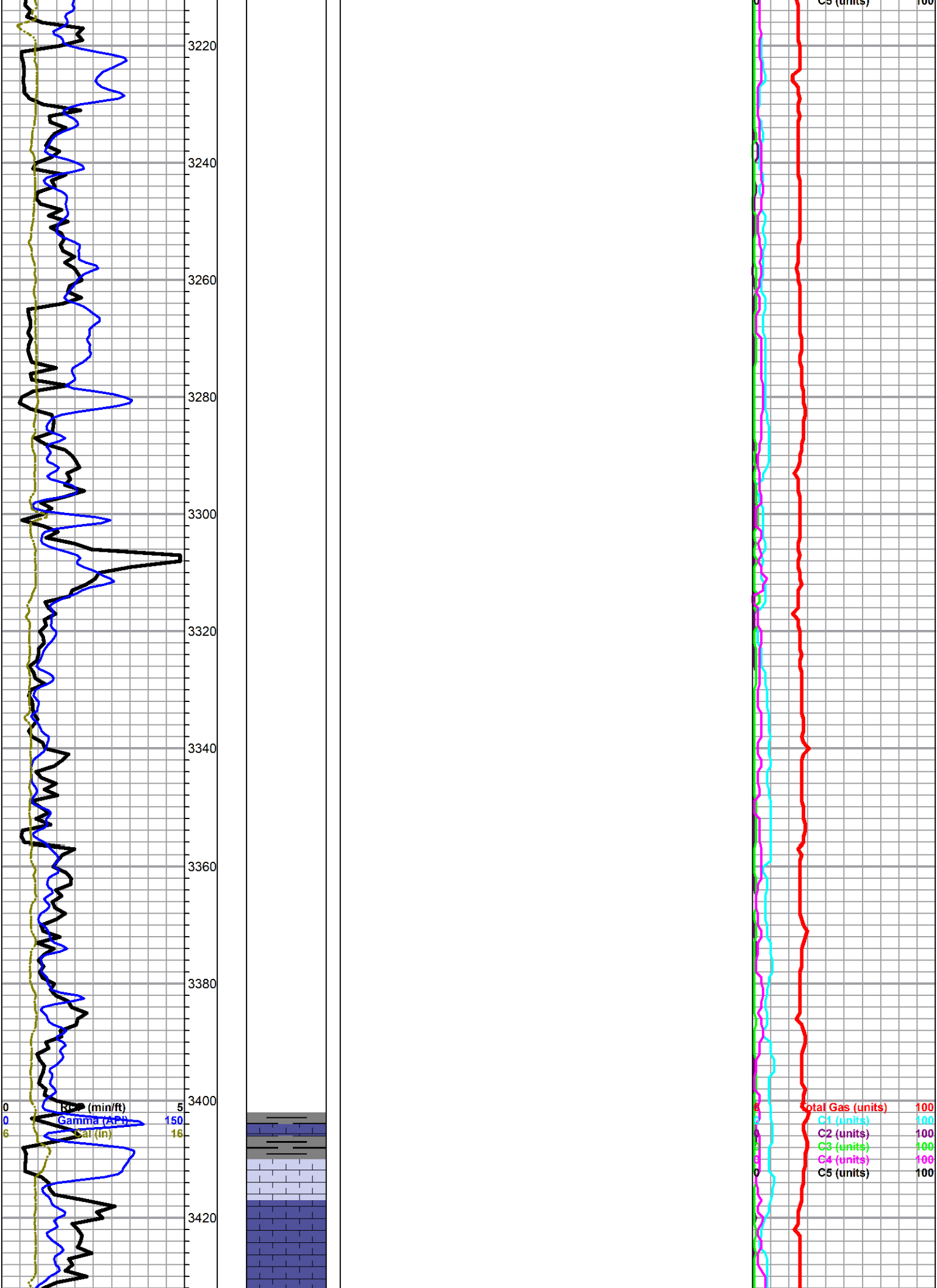


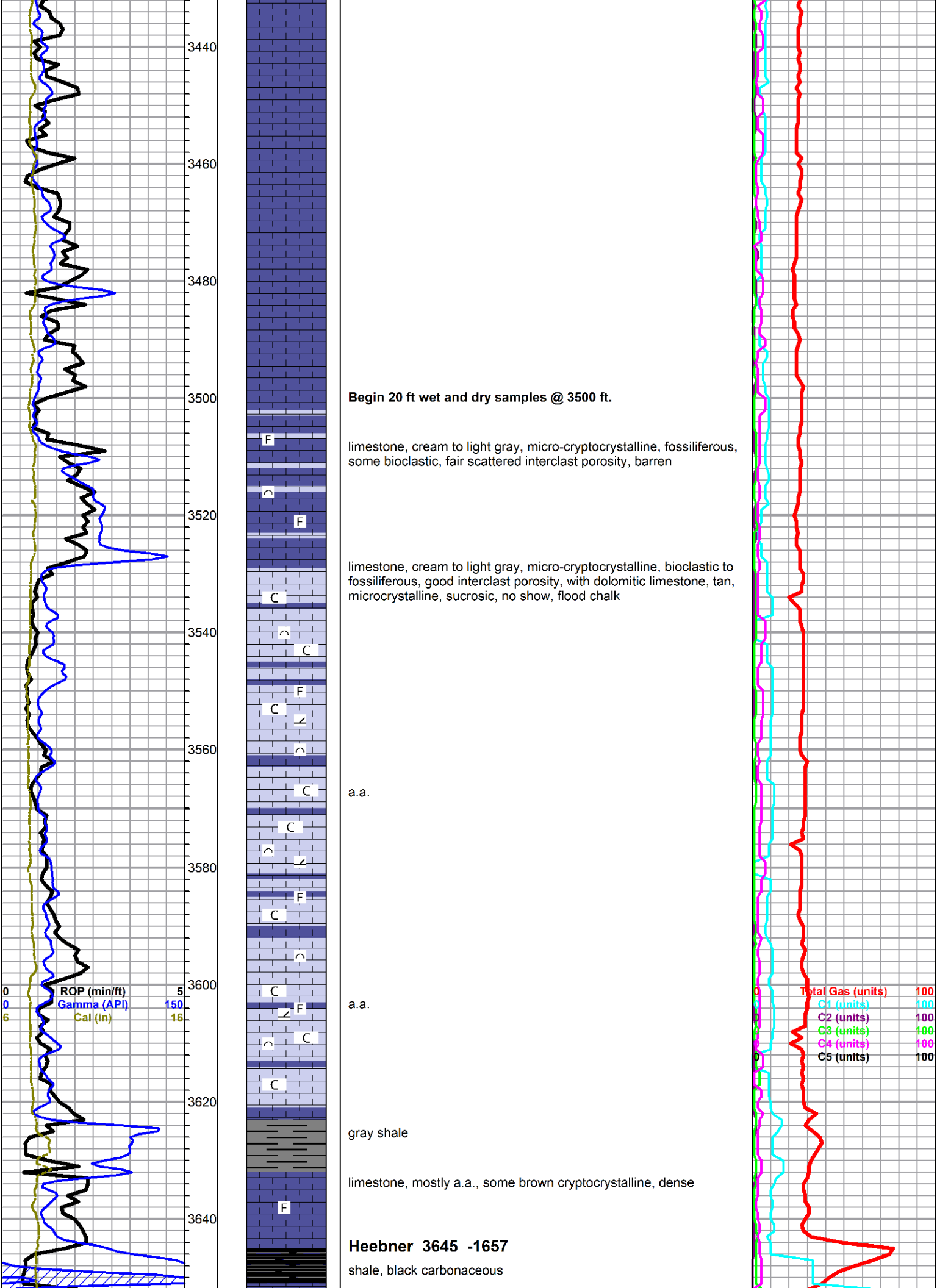
Indian Cave samples examined by Steve McClain 7/24/23
 sandstone, very fine grain, gray with black mica, laminated, very soft, no gas shows in wet samples or on break

Tarkio 2857









3440
3460
3480
3500
3520
3540
3560
3580
3600
3620
3640

Begin 20 ft wet and dry samples @ 3500 ft.

limestone, cream to light gray, micro-cryptocrystalline, fossiliferous, some bioclastic, fair scattered interclast porosity, barren

limestone, cream to light gray, micro-cryptocrystalline, bioclastic to fossiliferous, good interclast porosity, with dolomitic limestone, tan, microcrystalline, sucrosic, no show, flood chalk

a.a.

a.a.

gray shale

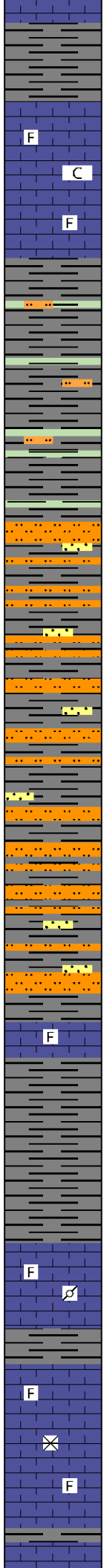
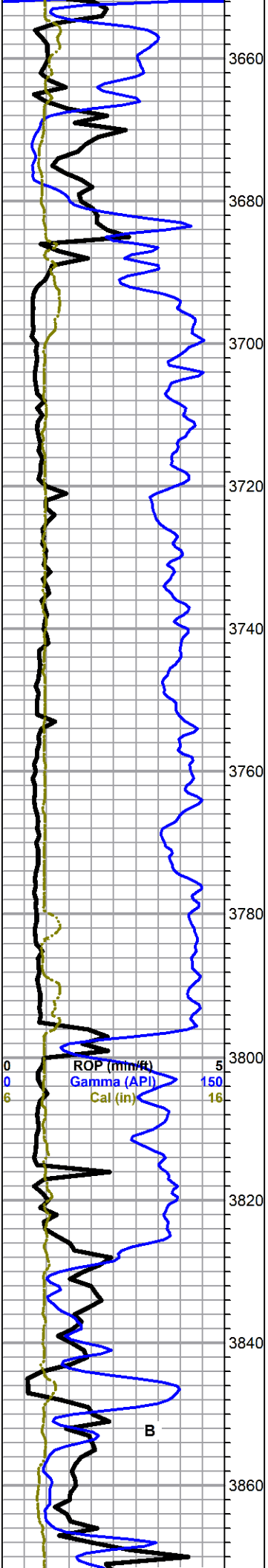
limestone, mostly a.a., some brown cryptocrystalline, dense

Heebner 3645 -1657

shale, black carbonaceous

ROP (min/ft) 5
Gamma (API) 150
Cal (in) 16

Total Gas (units) 100
C1 (units) 100
C2 (units) 100
C3 (units) 100
C4 (units) 100
C5 (units) 100



Toronto 3666 -1678

limestone, white to cream, crypto-microcrystalline, fossiliferous, chalky, poor visible porosity, no shows

Douglas 3688 -1700

shale, gray, red, some scattered light green, light gray salt and pepper siltstone, micaceous

grades to mostly gray silty micaceous shale, increased siltstone a.a. with: scattered sandstone, quartz, very fine grain, round to angular, fair sorting, fair cementing, micaceous, silty, poor visible porosity, no shows

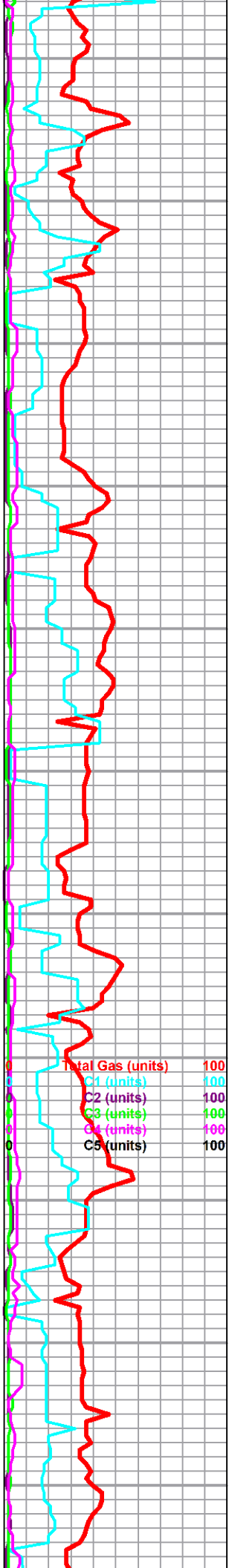
Brown Lime 3795 -1807

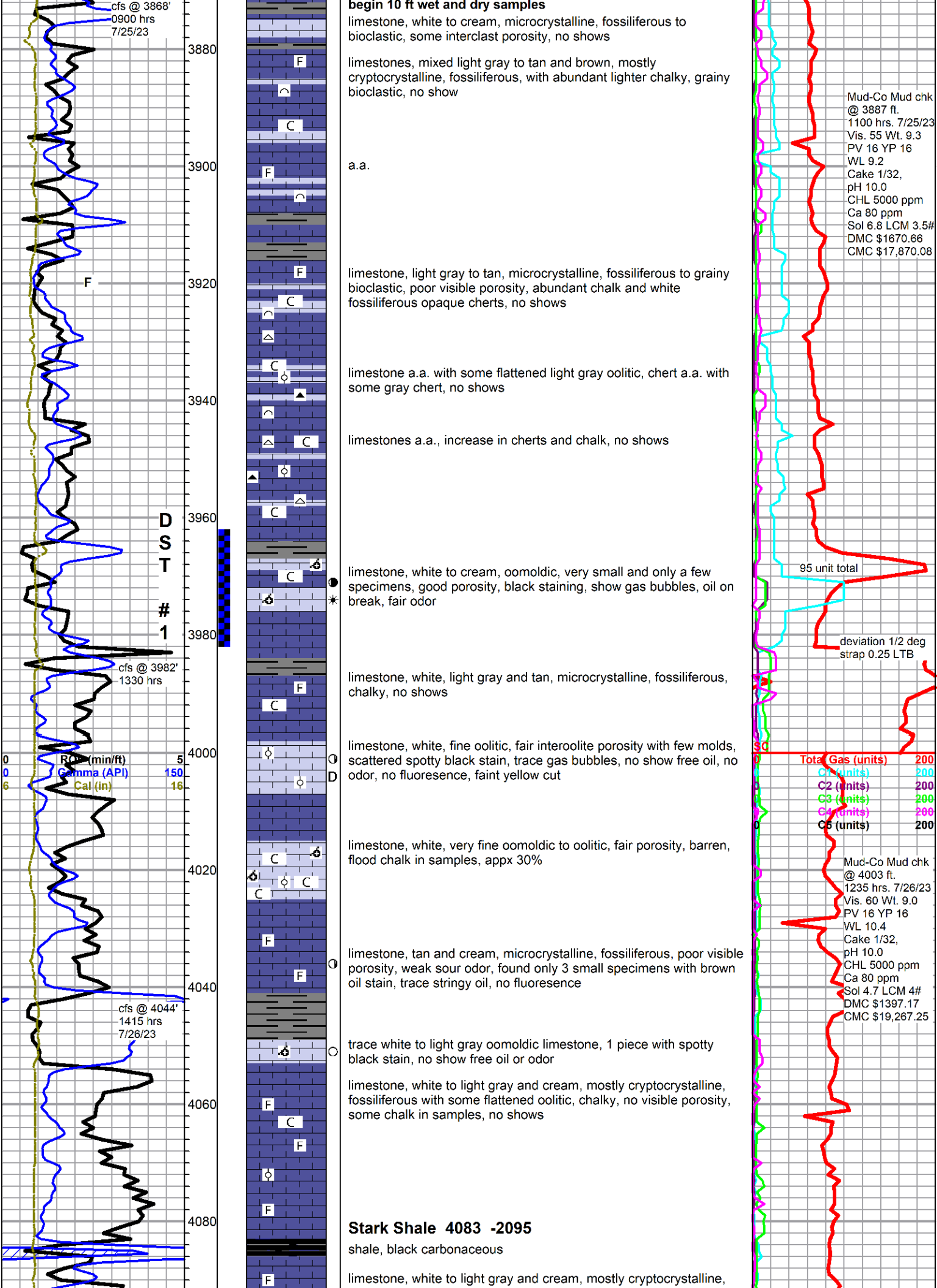
limestone, gray to tan, microcrystalline, slightly fossiliferous, slightly pyritic, very dense

Lansing 3826

limestone, cream to gray and tan, cryptocrystalline, fossiliferous to lithographic with mottled gray pelletal, poor visible porosity, no shows

limestone, white, cream and gray, mostly cryptocrystalline primary matrix with abundant secondary calcite, fossiliferous, some intercrystalline porosity associated with secondary calcite, some scattered white and gray chert, no shows





cfs @ 3868'
0900 hrs
7/25/23

3880

begin 10 ft wet and dry samples

limestone, white to cream, microcrystalline, fossiliferous to bioclastic, some interclast porosity, no shows

F

limestones, mixed light gray to tan and brown, mostly cryptocrystalline, fossiliferous, with abundant lighter chalky, grainy bioclastic, no show

C

3900

a.a.

F

3920

limestone, light gray to tan, microcrystalline, fossiliferous to grainy bioclastic, poor visible porosity, abundant chalk and white fossiliferous opaque cherts, no shows

F

C

3940

limestone a.a. with some flattened light gray oolitic, chert a.a. with some gray chert, no shows

C

C

3960

limestones a.a., increase in cherts and chalk, no shows

C

C

limestone, white to cream, oomoldic, very small and only a few specimens, good porosity, black staining, show gas bubbles, oil on break, fair odor

3980

D
S
T

1

limestone, white, light gray and tan, microcrystalline, fossiliferous, chalky, no shows

F

C

cfs @ 3982'
1330 hrs

4000

limestone, white, fine oolitic, fair interoolite porosity with few molds, scattered spotty black stain, trace gas bubbles, no show free oil, no odor, no fluorescence, faint yellow cut

C

C

RO (min/ft) 5
Gamma (API) 150
Cal (in) 16

limestone, white, very fine oomoldic to oolitic, fair porosity, barren, flood chalk in samples, appx 30%

C

C

4020

limestone, tan and cream, microcrystalline, fossiliferous, poor visible porosity, weak sour odor, found only 3 small specimens with brown oil stain, trace stringy oil, no fluorescence

F

F

cfs @ 4044'
1415 hrs
7/26/23

4060

trace white to light gray oomoldic limestone, 1 piece with spotty black stain, no show free oil or odor

F

C

limestone, white to light gray and cream, mostly cryptocrystalline, fossiliferous with some flattened oolitic, chalky, no visible porosity, some chalk in samples, no shows

F

F

4080

Stark Shale 4083 -2095

shale, black carbonaceous

limestone, white to light gray and cream, mostly cryptocrystalline,

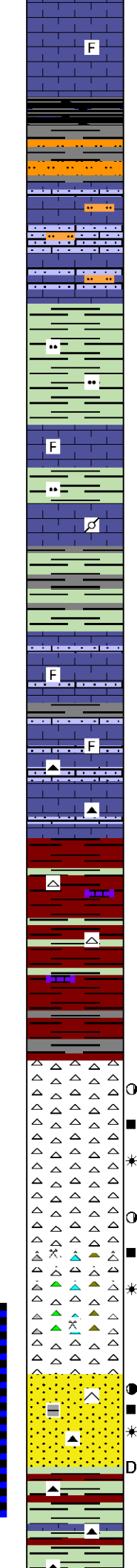
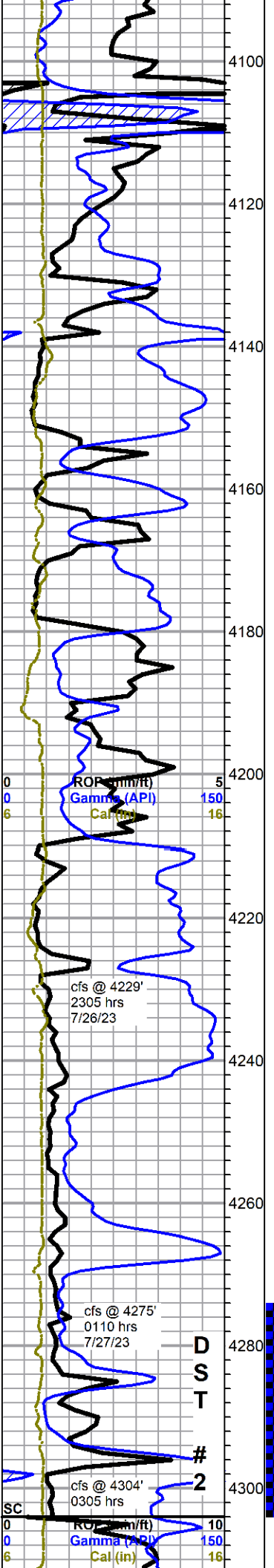
Mud-Co Mud chk
@ 3887 ft.
1100 hrs. 7/25/23
Vis. 55 Wt. 9.3
PV 16 YP 16
WL 9.2
Cake 1/32,
pH 10.0
CHL 5000 ppm
Ca 80 ppm
Sol 6.8 LCM 3.5#
DMC \$1670.66
CMC \$17,870.08

95 unit total

deviation 1/2 deg
strap 0.25 LTB

Total Gas (units)	200
C1 (units)	200
C2 (units)	200
C3 (units)	200
C4 (units)	200
C5 (units)	200

Mud-Co Mud chk
@ 4003 ft.
1235 hrs. 7/26/23
Vis. 60 Wt. 9.0
PV 16 YP 16
WL 10.4
Cake 1/32,
pH 10.0
CHL 5000 ppm
Ca 80 ppm
Sol 4.7 LCM 4#
DMC \$1397.17
CMC \$19,267.25



fossiliferous, trace pelletal and flattened oolitic, chalky, no visible porosity, scattered gray dense arenaceous, no shows

shale, black carbonaceous

siltstone, gray/green, siliceous, well cemented to friable, marked increase in 4140 sample with: limestones, cream to white, silty to sandy, no shows

Base Kansas City 4134 -2146

shale, light green, silty, soft to slightly brittle

limestone, pale green, microcrystalline, fossiliferous, dense, with cream and tan cherty, reddish/brown mottled pelletal, no shows

shale a.a.

limestone a.a.

shale, gray to gray/green, silty

limestone, cream to light gray, pale green, micro-cryptocrystalline, cherty dense fossiliferous to sub-lithographic to sandy, poor visible porosity, no shows

a.a. some tan and orange cherts

Conglomerate 4209 -2221

shaley conglomerate, mostly lavender shales with maroon, orange and green, mixed limestones with some mixed cherts

4260 shale, orange, gray, red, and mottled red and green

Mississippian 4240 -2252

chert, white, boney, light gray translucent, fresh, no fluorescence with: scattered white chert, weathered and brittle, micro-fracture and pin-point porosity, light brown spotty stain, slow bleeding gas bubbles, show clear oil and/or condensate droplets, bright green spotty fluorescence, faint green cut, no odor

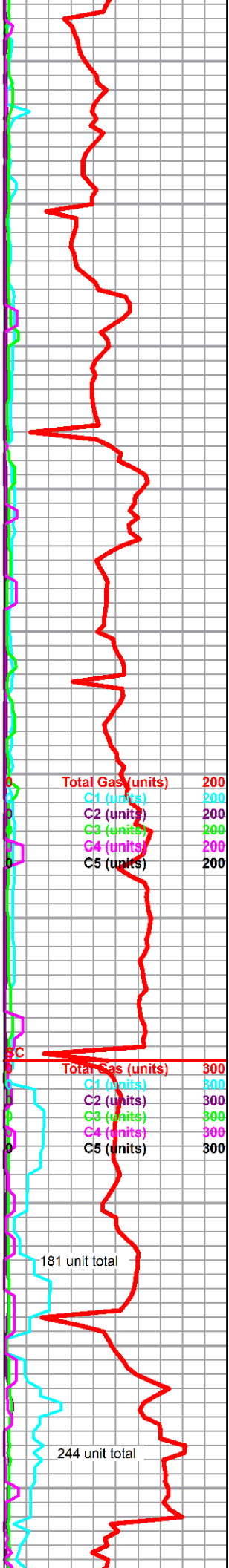
30 min sample, a.a., some spicules with increased staining and some slightly tripolitic with black stain, trace oil on break, influx yellow cherts, no odor in wet cup

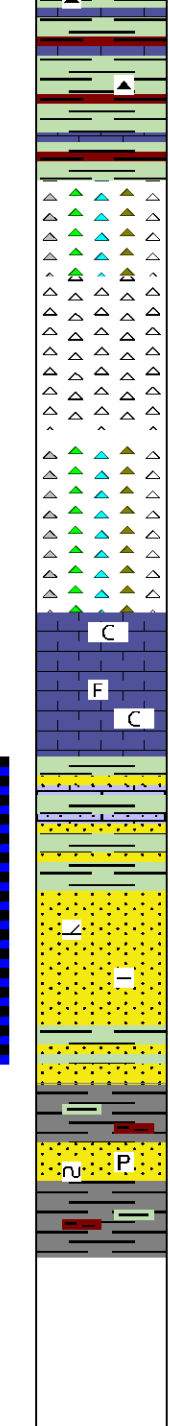
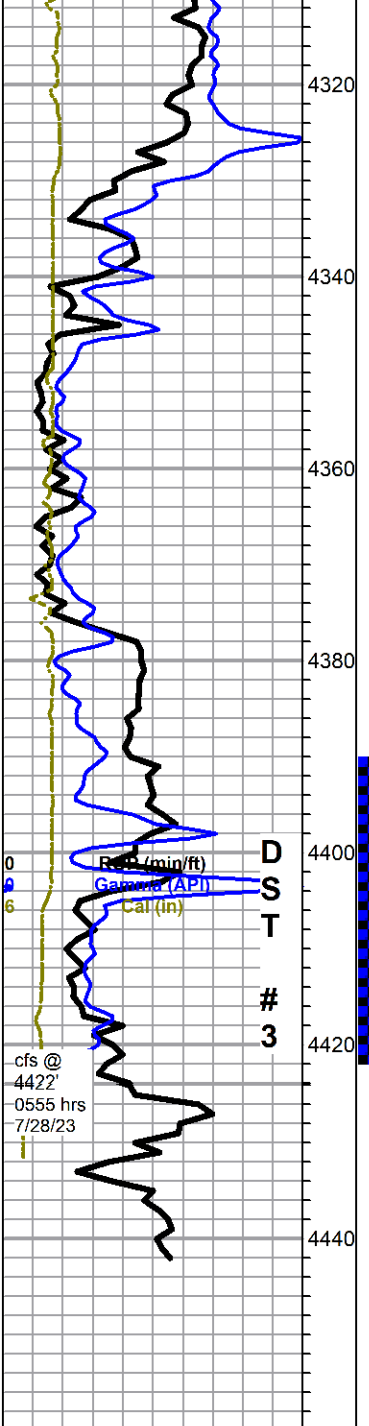
Kinderhook Sand 4284 -2296

sandstone, quartz, clear, very fine grain, well rounded and sorted, silica cement, friable to well cemented, good intergrain porosity, some greenish with shale inclusions, even brown to black staining, gassy, slight show oil, faint odor, bright fluorescence, slow blooming cut, bright white on break, some pale green chert with adhering stained stained and sand inclusions

60 min sample, increase in green limey shale, off white to yellow chert, sandstone grades to heavy dark black dead stain

out with PDC & back in hole with button bit after DST. 4304'





shale, mostly green-gray/green, silty to limey, maroon, some mottled maroon-green, trace yellow, limestone, cream, microcrystalline, fossiliferous, with abundant white to light gray chert, opaque to translucent (from above?), with brown and yellow chert, no shows

chert, tan, yellow, orange and green, some scattered dead black edge stain, no free oil, no odor, no fluorescence

Viola 4340 -2352
white chert and abundant chalk, heavy white wash in 4360 sample

changes to chert, primarily boney white, with translucent tan and gray, fresh and sharp, scattered spotty black stain, 1 droplet free oil in 4370 sample, no odor, faint even green fluorescence

marked increase in gray chert, becomes predominant, other cherts a.a., no shows

grades back to mostly cream and pale green, scattered dead black stain

limestone, white to light gray, pale green, fine crystalline, some good crystal definition, fossiliferous, poor porosity, abundant white crunchy/brittle chalk, no shows

shale, green, dense, waxy, sandstone, quartz, some pale green, very fine to fine grain, medium sorting, well rounded, dolomitic, friable to medium cementing, some white and pale green sandy limestone, no shows

Simpson Sand 4404 -2416
quartz sandstone a.a., some white and heavily cemented but most friable, fair porosity, very light stain, visible oil between grains, good show on break, good odor, good green fluorescence, good cut with halo on break only

cfs samples, a.a., some pale green, much with brown inclusions, fossil or shale frags

shale, variable gray, some scattered maroon and green

sandstone, a.a., much gray sand with increased shale inclusions, pyritic and glauconitic, no shows

Rotary TD 4442' @ 2040 hrs 7/28/23
ELI Wireline TD 4443'
Complete Logging operations 0630 hrs 7/29/23

