



**COMPENSATED
DENSITY/NEUTRON
PE LOG**

Company THOMAS GARNER, INC.
Well RIPCORD #1-14
Field MOORE SOUTHWEST
County PRATT State KANSAS

Location: API #: 15-151-22569-0000
1480' FNL & 2156' FWL
NW - NE - SE - NW
SEC 14 TWP 26S RGE 14W
Permanent Datum GROUND LEVEL Elevation 1977
Log Measured From KELLY BUSHING 11' A.G.L.
Drilling Measured From KELLY BUSHING
Other Services
DILMEL
SONIC
Elevation
K.B. 1988
D.F. 1986
G.L. 1977

Date	7/29/23		
Run Number	THREE		
Depth Driller	4442		
Depth Logger	4443		
Bottom Logged Interval	4319		
Top Log Interval	1900		
Casing Driller	8 5/8 @ 433		
Casing Logger	433		
Bit Size	7 7/8		
Type Fluid in Hole	CHEMICAL MUD	CHLORIDES 5.000 PPM	
Density / Viscosity	9.3/73		
pH / Fluid Loss	11.0/8.8		
Source of Sample	FLOWLINE		
Rm @ Meas. Temp	.600 @ 82F		
Rmt @ Meas. Temp	.450 @ 82F		
Rmc @ Meas. Temp	.720 @ 82F		
Source of Rmf / Rmc	MEASUREMENT		
Rm @ BHT	.410 @ 120F		
Time Circulation Stopped	5.5 HOURS		
Time Logger on Bottom	4:30 A.M.		
Maximum Recorded Temperature	120F		
Equipment Number	8916		
Location	HAYS, KANSAS		
Recorded By	COLE ROBBERN		
Witnessed By	KEITH REAVIS		

<<< Fold Here >>>

All interpretations are opinions based on inferences from electrical or other measurements and we cannot and do not guarantee the accuracy or correctness of any interpretation, and we shall not, except in the case of gross or willful negligence on our part, be liable or responsible for any loss, costs, damages, or expenses incurred or sustained by anyone resulting from any interpretation made by any of our officers, agents or employees. These interpretations are also subject to our general terms and conditions set out in our current Price Schedule.

Comments

THANK YOU FOR USING ELI WIRELINE SERVICES, HAYS, KS. (785) 628-6395

DIRECTIONS:

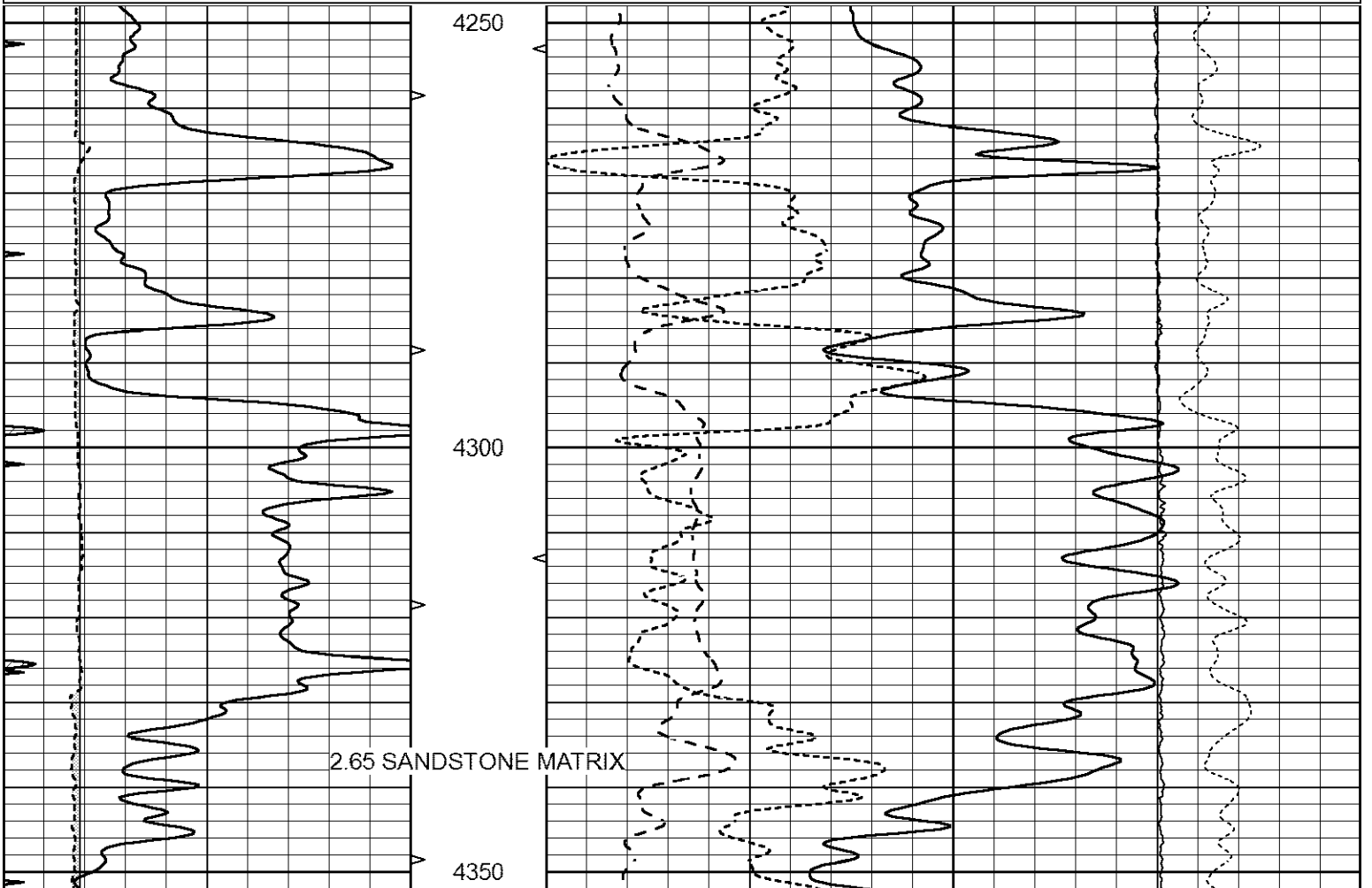
FROM HIGHWAY 281/BYERS BLACK TOP GO 5 MILES WEST TO NORTHWEST 50TH AVENUE,
1/2 MILE NORTH, EAST INTO



2.65 SANDSTONE MATRIX

Database File 7706pe.db
 Dataset Pathname pass11SAN
 Presentation Format _ldt_neu
 Dataset Creation Sat Jul 29 06:46:03 2023
 Charted by Depth in Feet scaled 1:240

0	GAMMA RAY (GAPI)	150	ABHV	30	COMPENSATED DENSITY (pu)				-10	
6	CALIPER (in)	16	10 (ft3)	0	30	COMPENSATED NEUTRON (pu)				-10
0	MINMK	20	TBHV	0	PE	10	-0.25	CORRECTION (g/cc)	0.25	
			0 (ft3)	10			0	LTEN (lb)	5000	



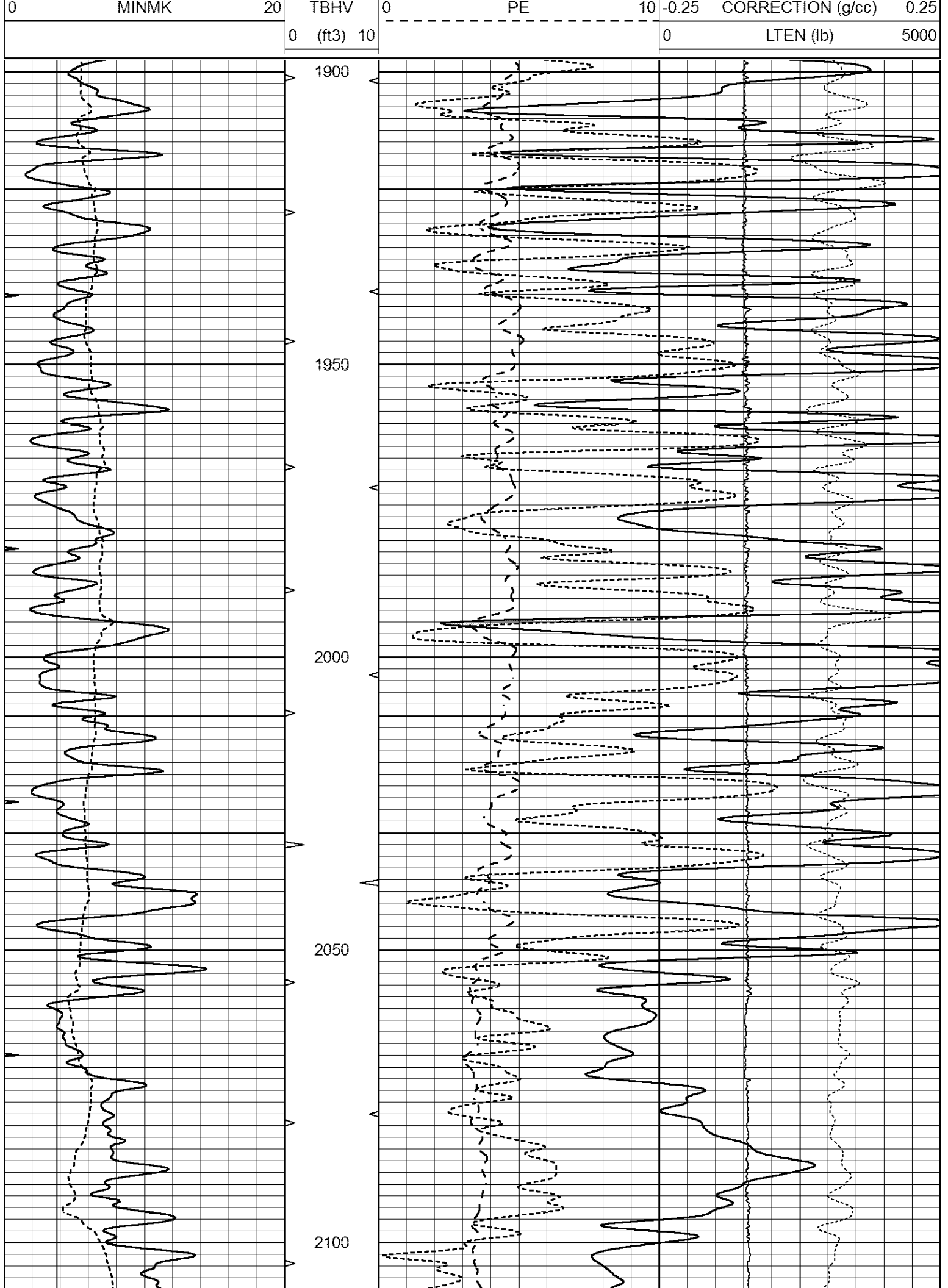
0	GAMMA RAY (GAPI)	150	ABHV	30	COMPENSATED DENSITY (pu)				-10	
6	CALIPER (in)	16	10 (ft3)	0	30	COMPENSATED NEUTRON (pu)				-10
0	MINMK	20	TBHV	0	PE	10	-0.25	CORRECTION (g/cc)	0.25	
			0 (ft3)	10			0	LTEN (lb)	5000	

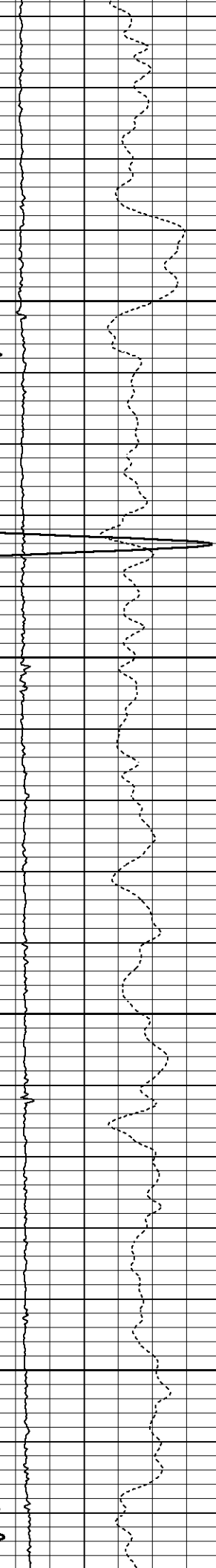
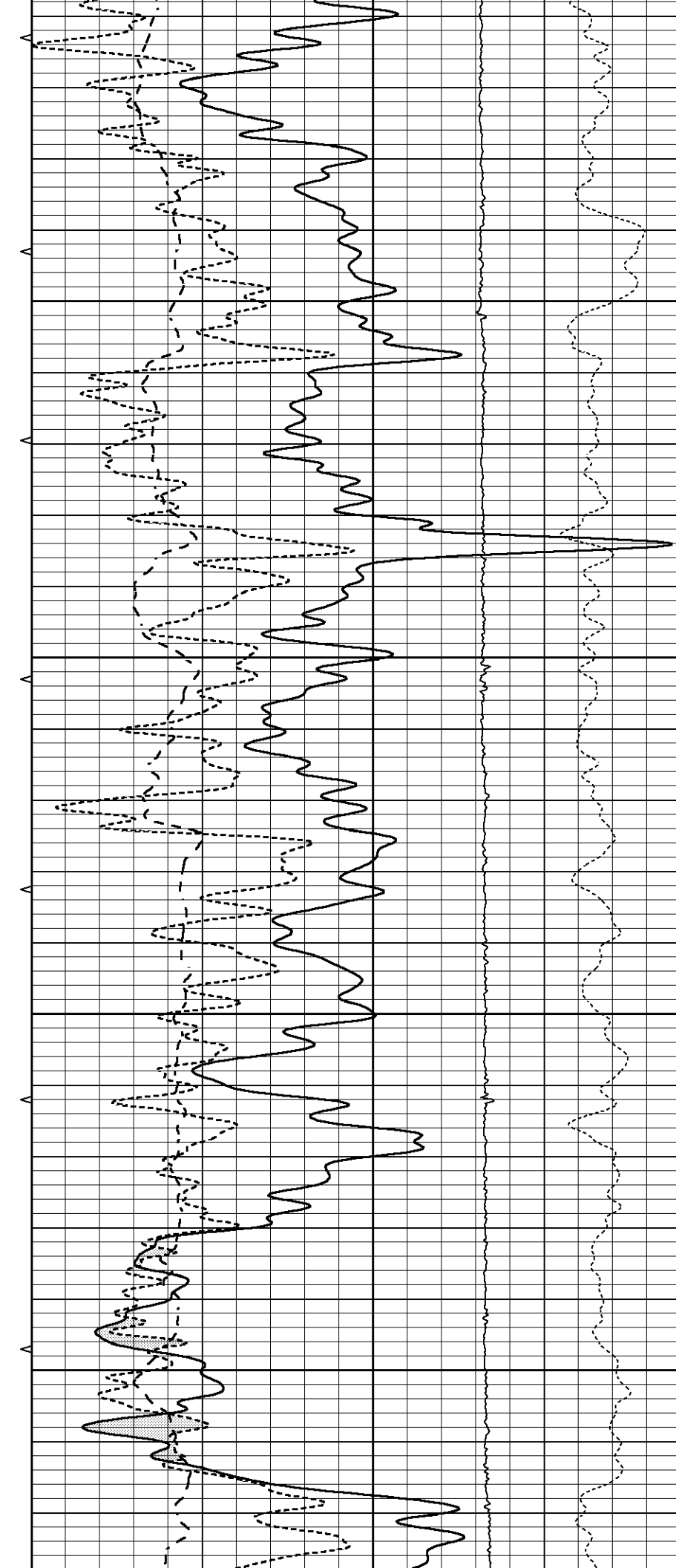
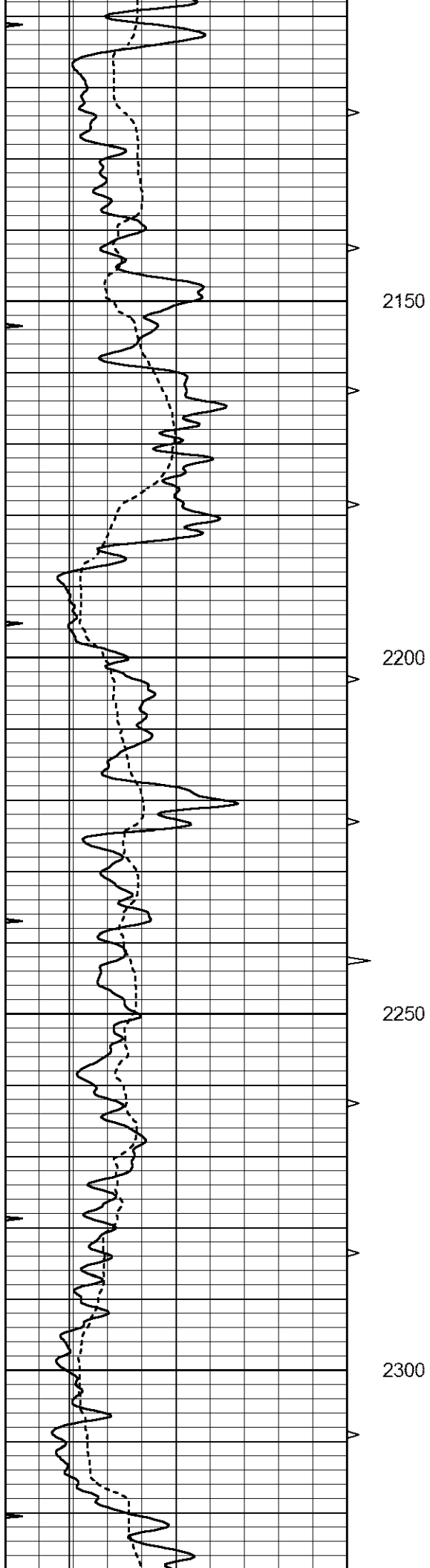


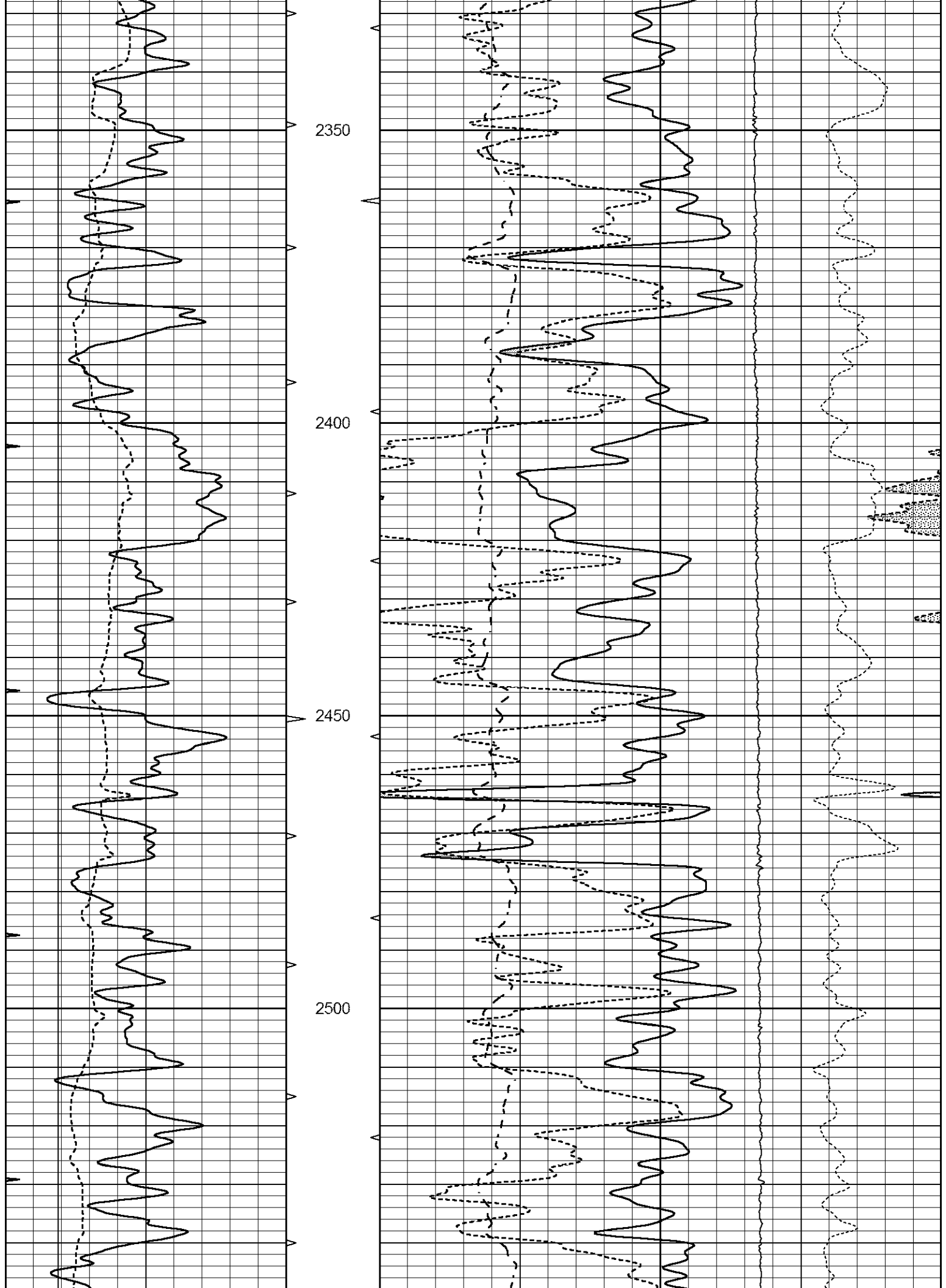
MAIN SECTION

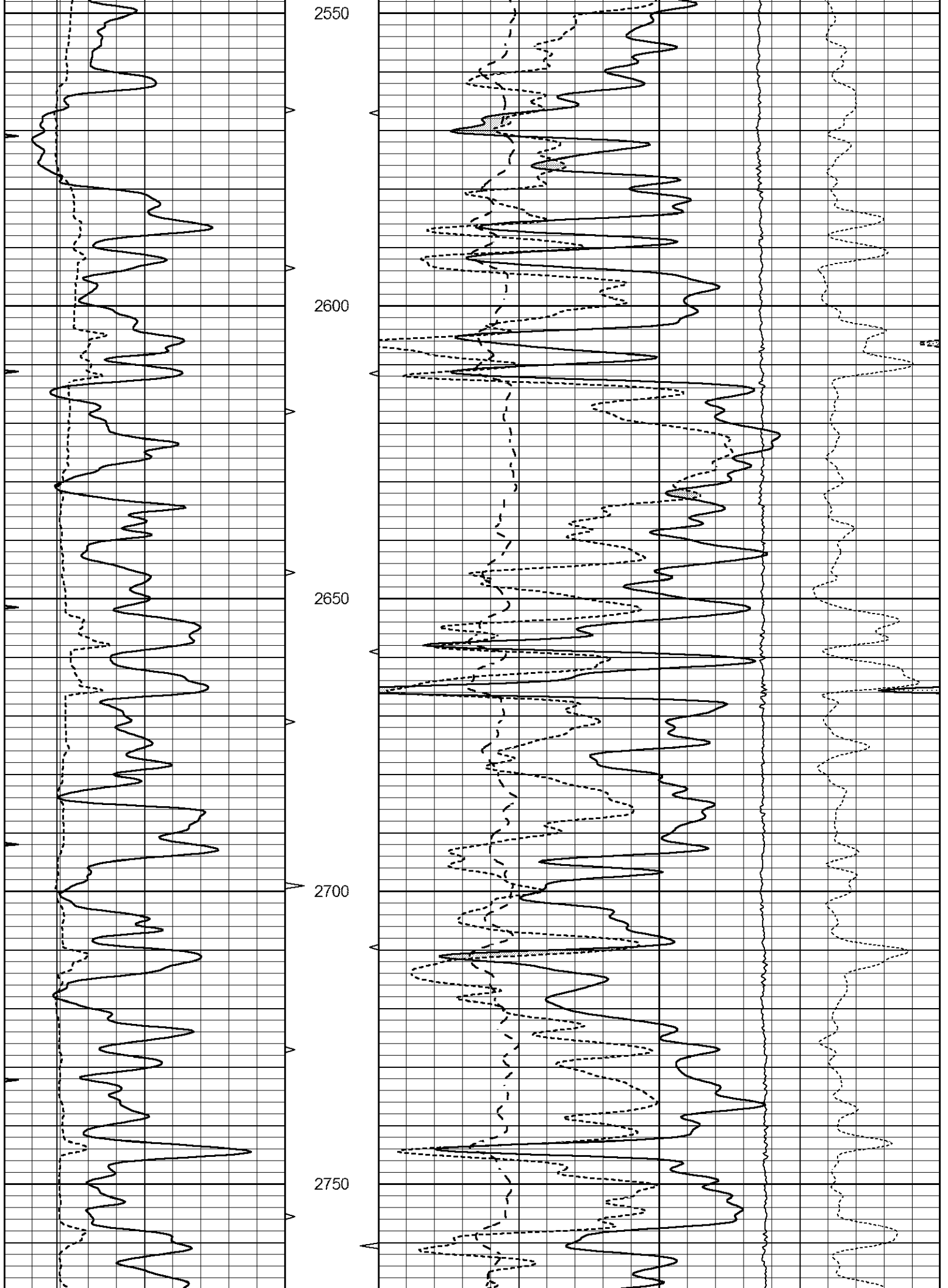
Database File 7706pe.db
 Dataset Pathname pass11.10
 Presentation Format _ldt_neu
 Dataset Creation Sat Jul 29 06:33:00 2023
 Charted by Depth in Feet scaled 1:240

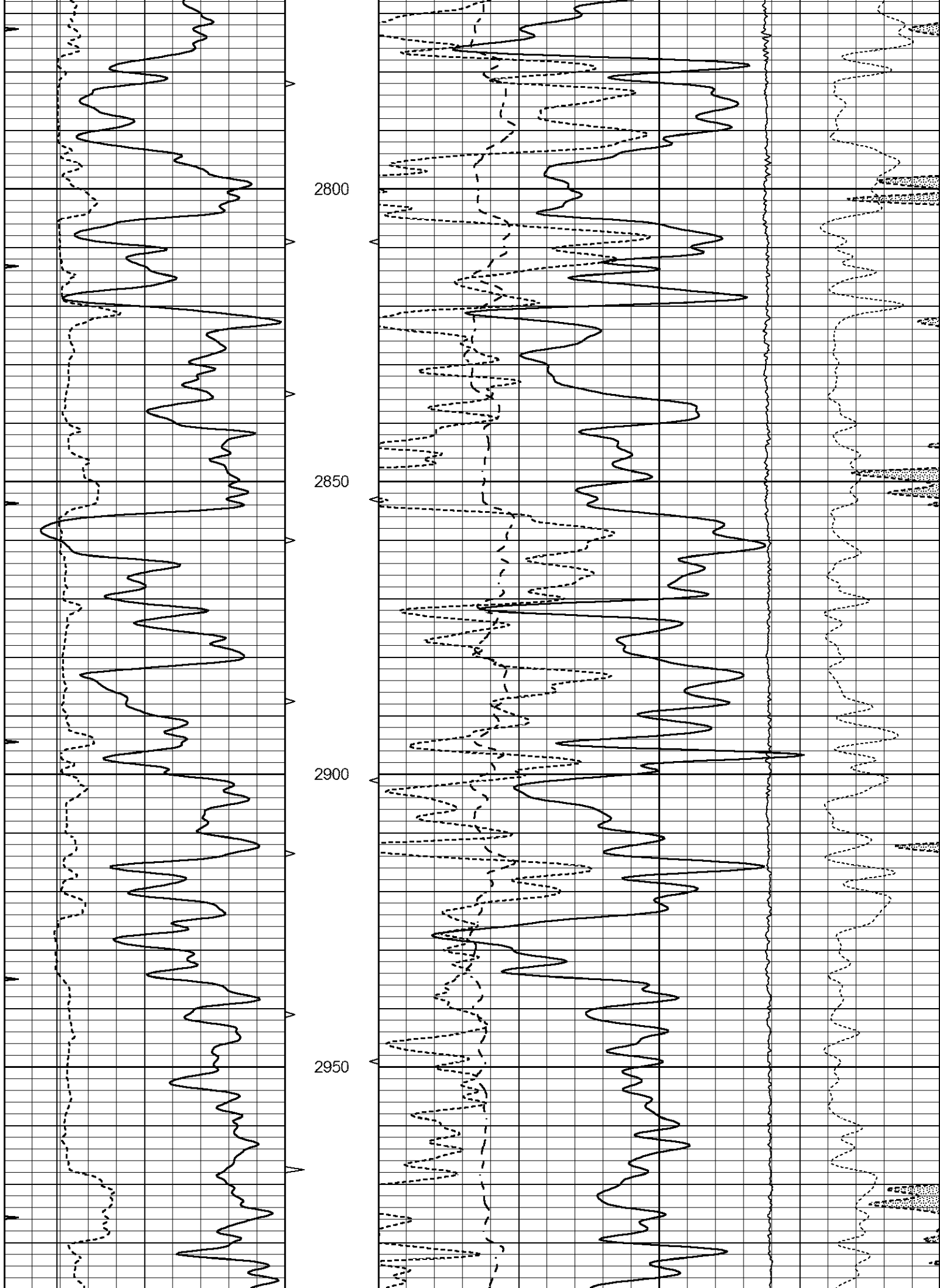
0	GAMMA RAY (GAPI)	150	ABHV	30	COMPENSATED DENSITY (pu)				-10	
6	CALIPER (in)	16	10 (ft3)	0	30	COMPENSATED NEUTRON (pu)				-10

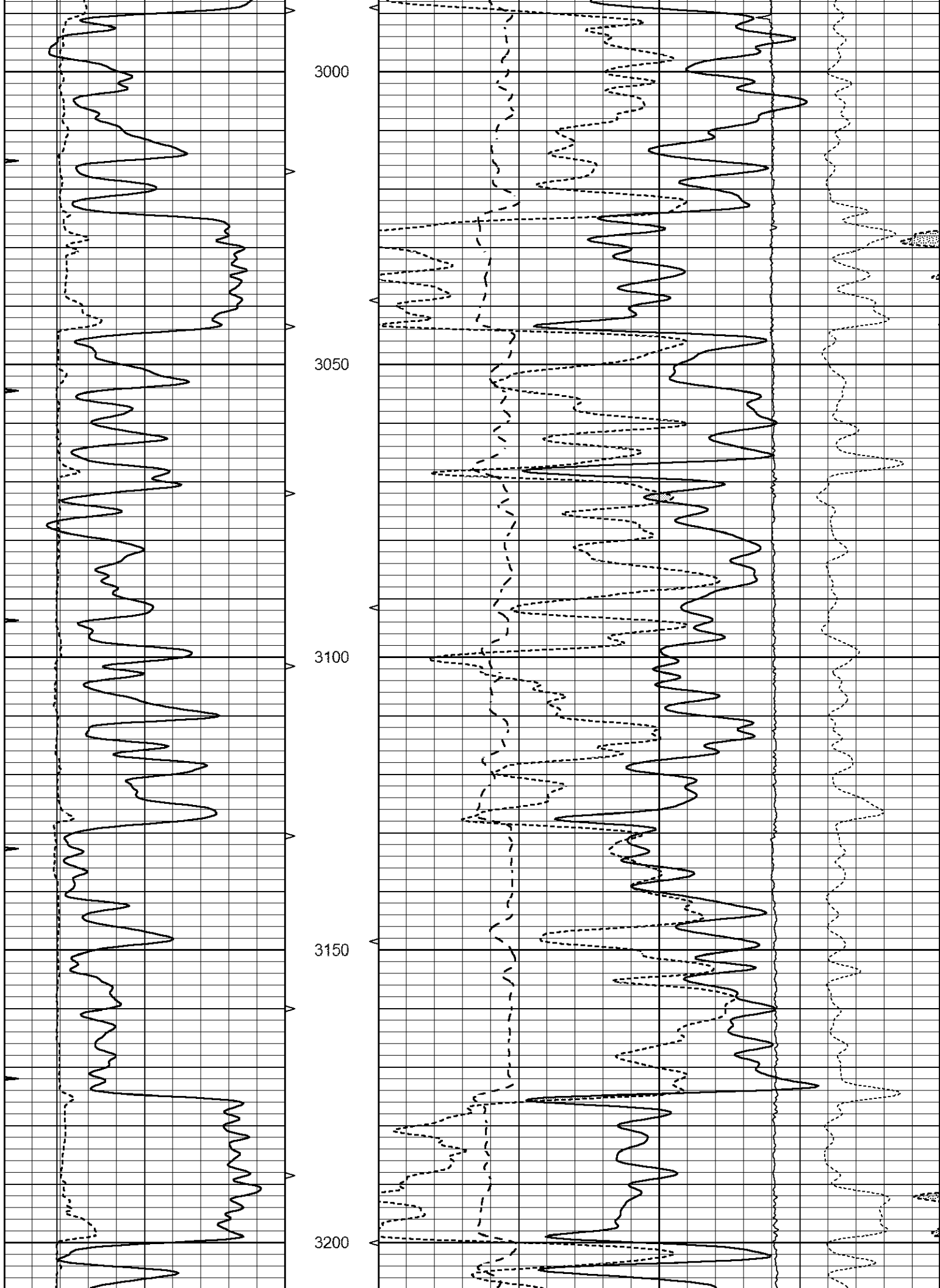


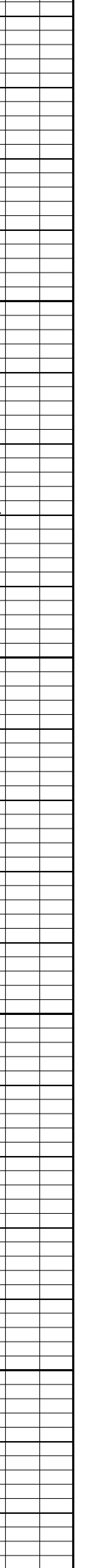
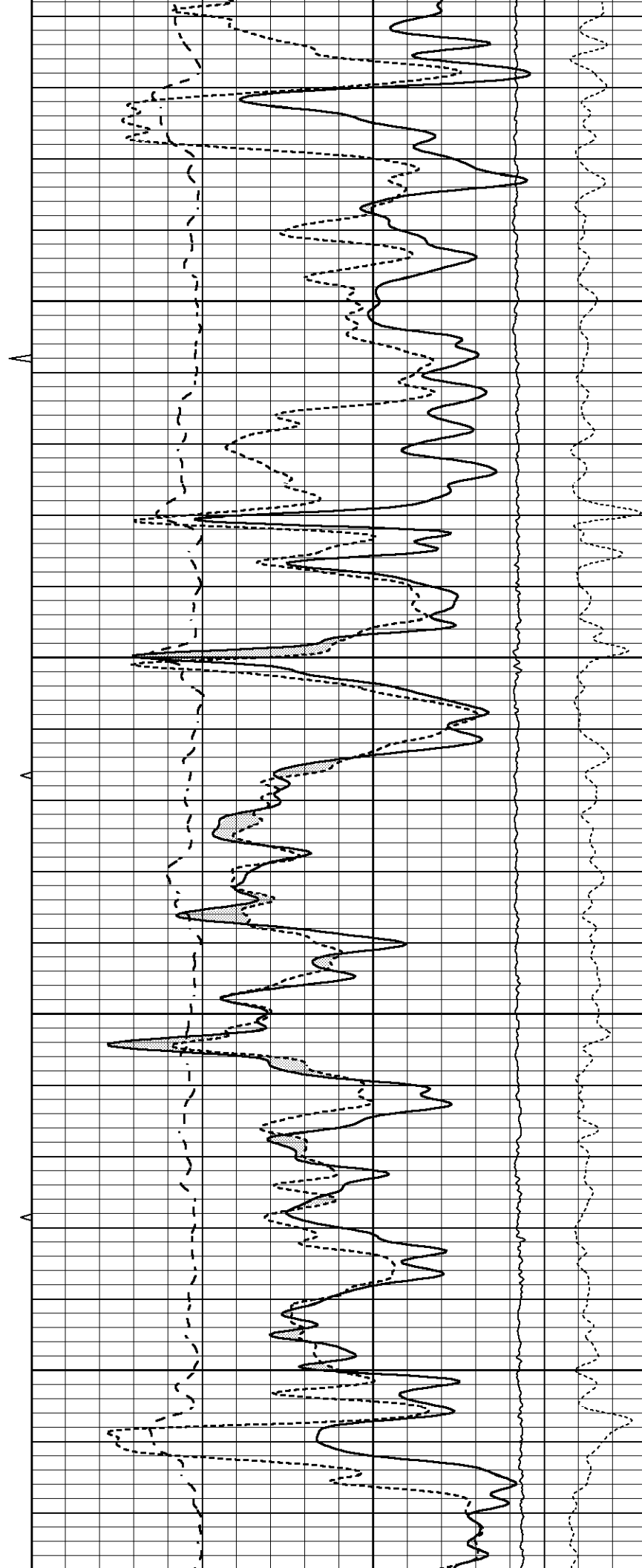
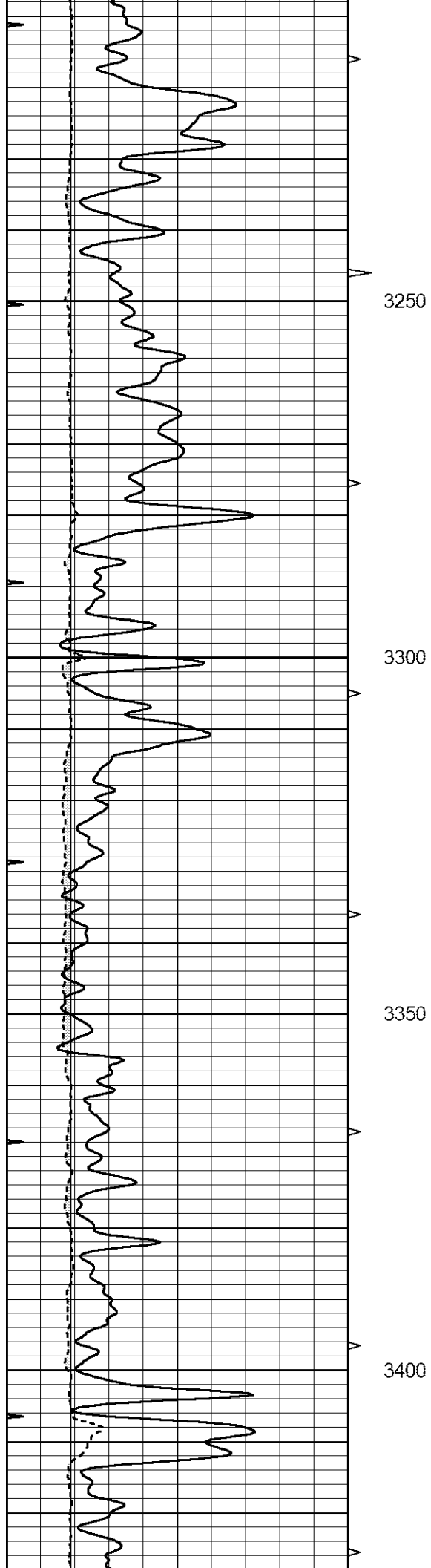


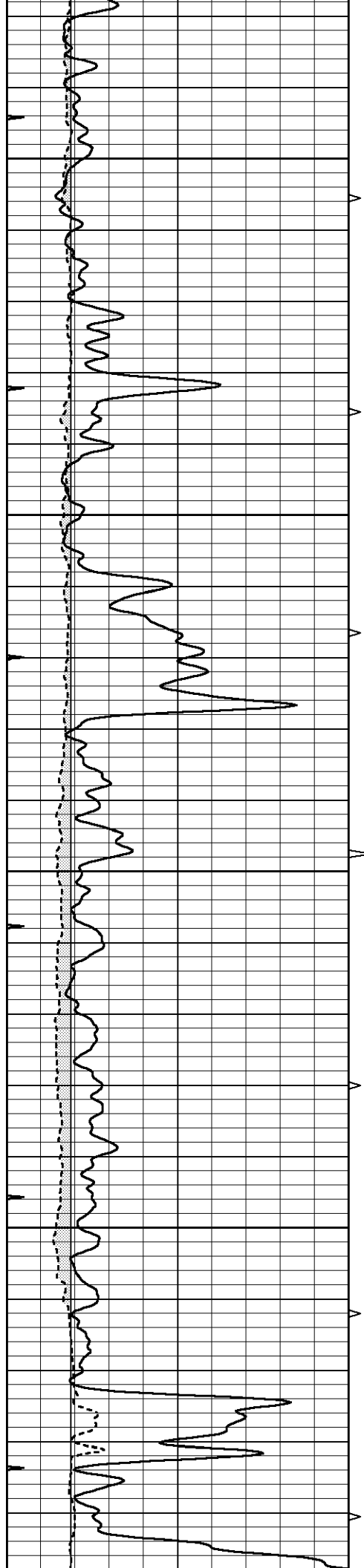










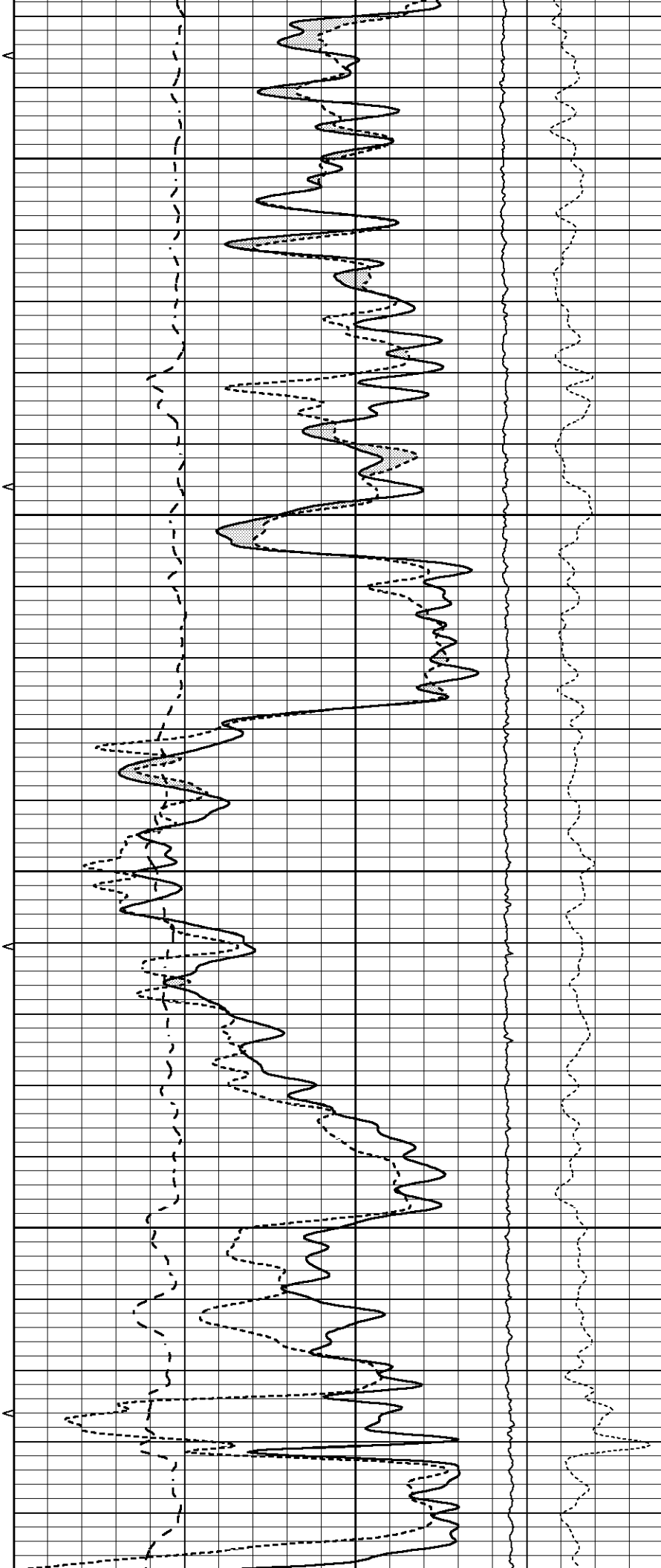


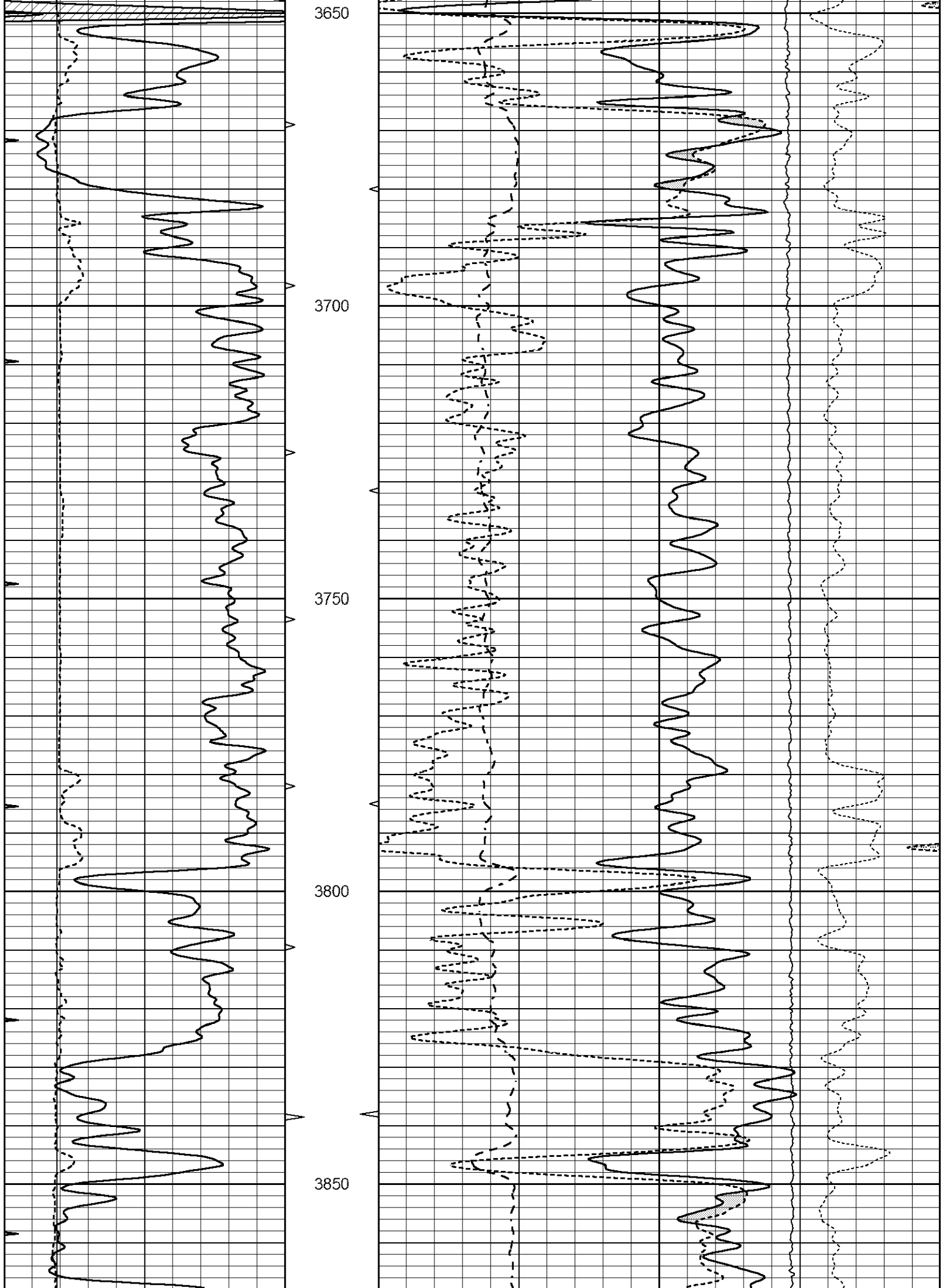
3450

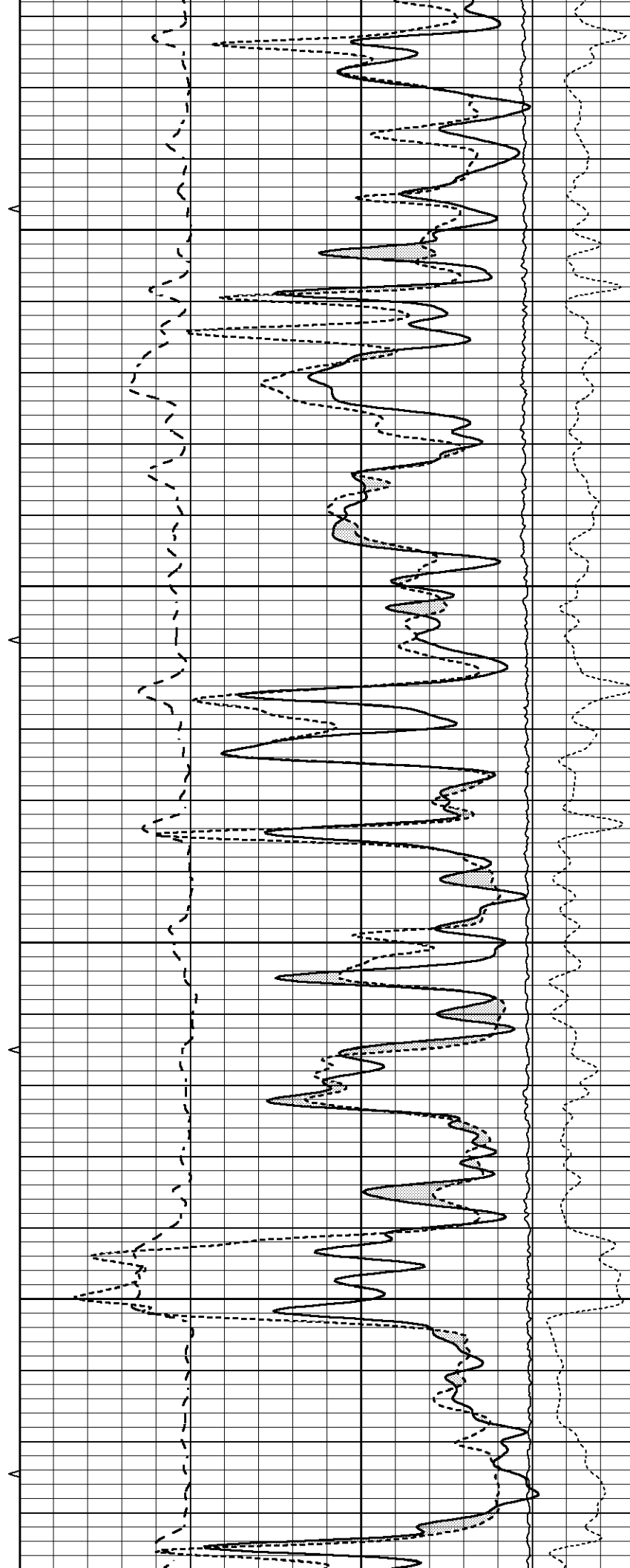
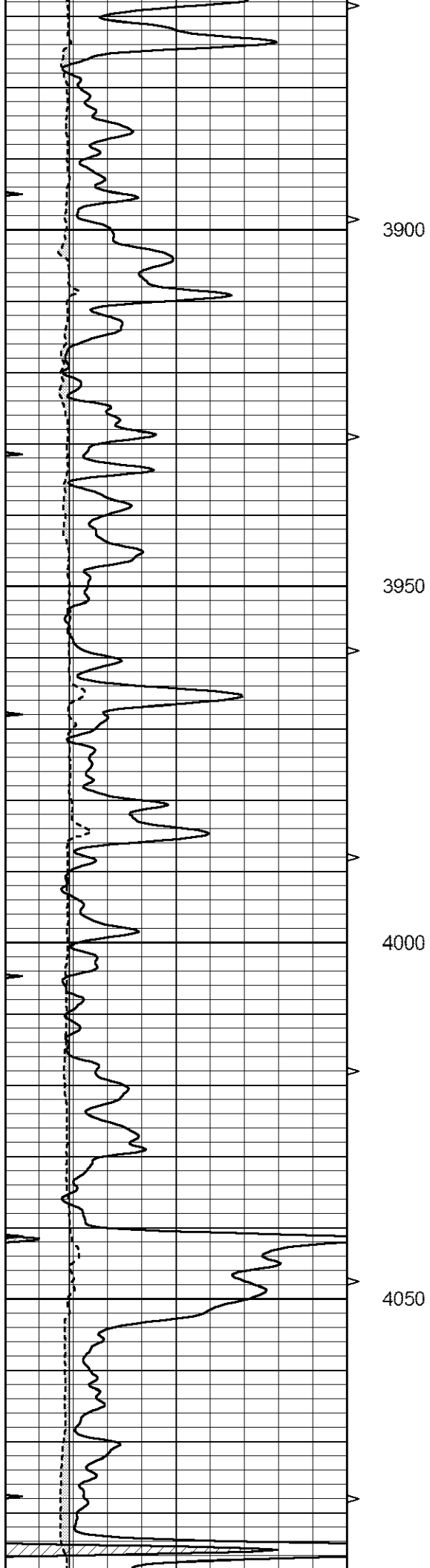
3500

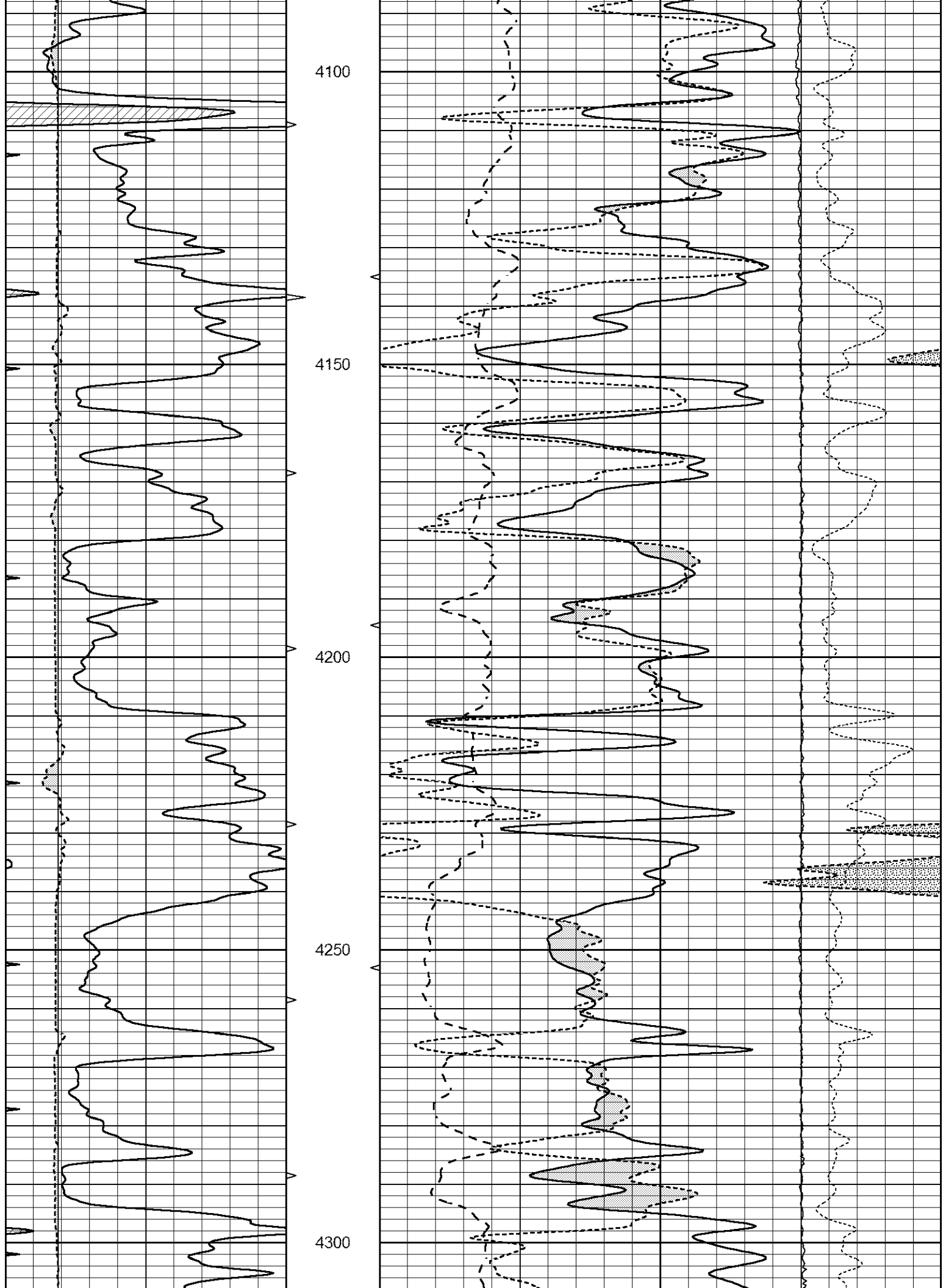
3550

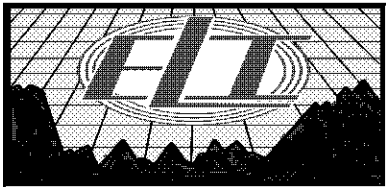
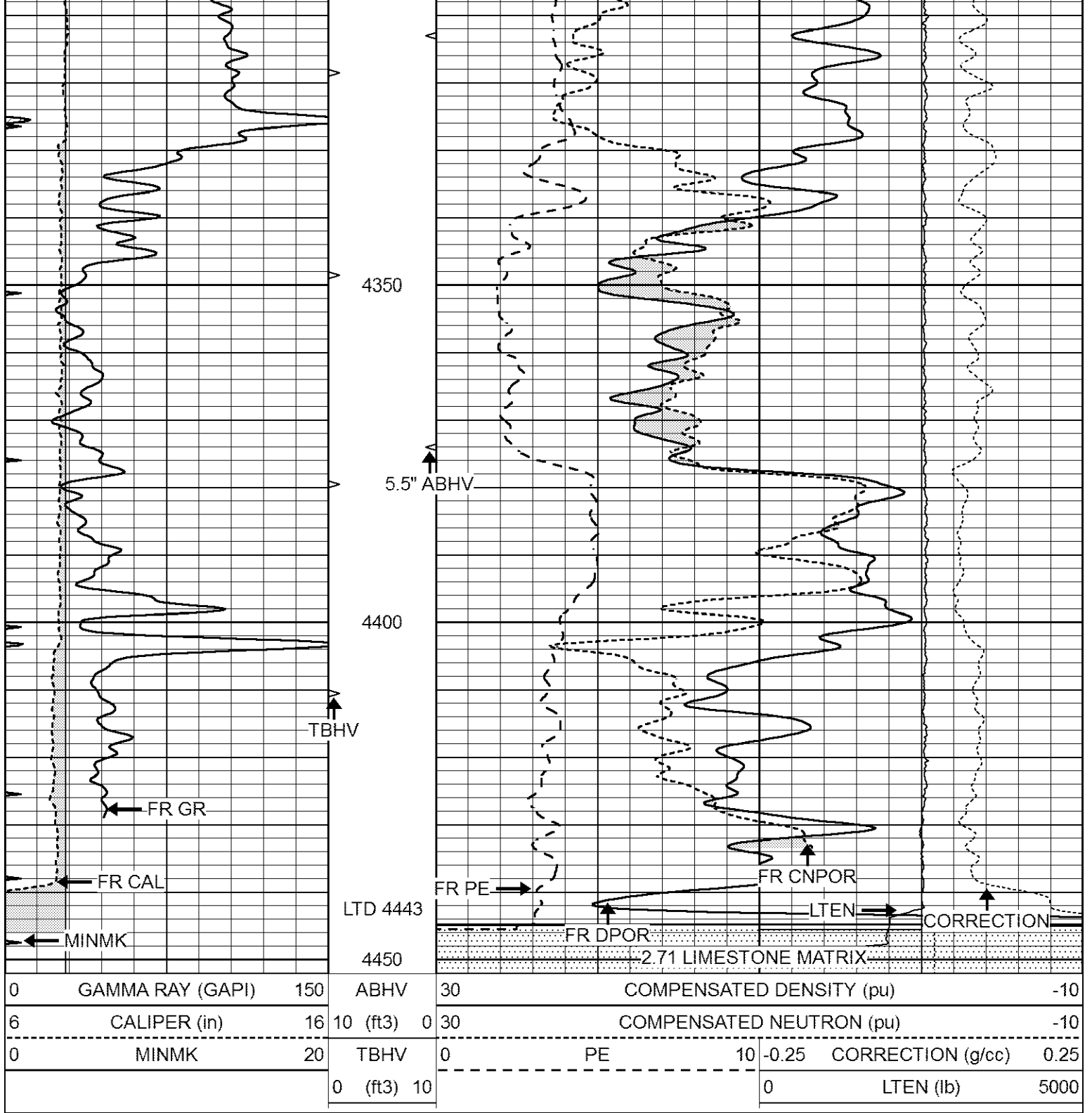
3600







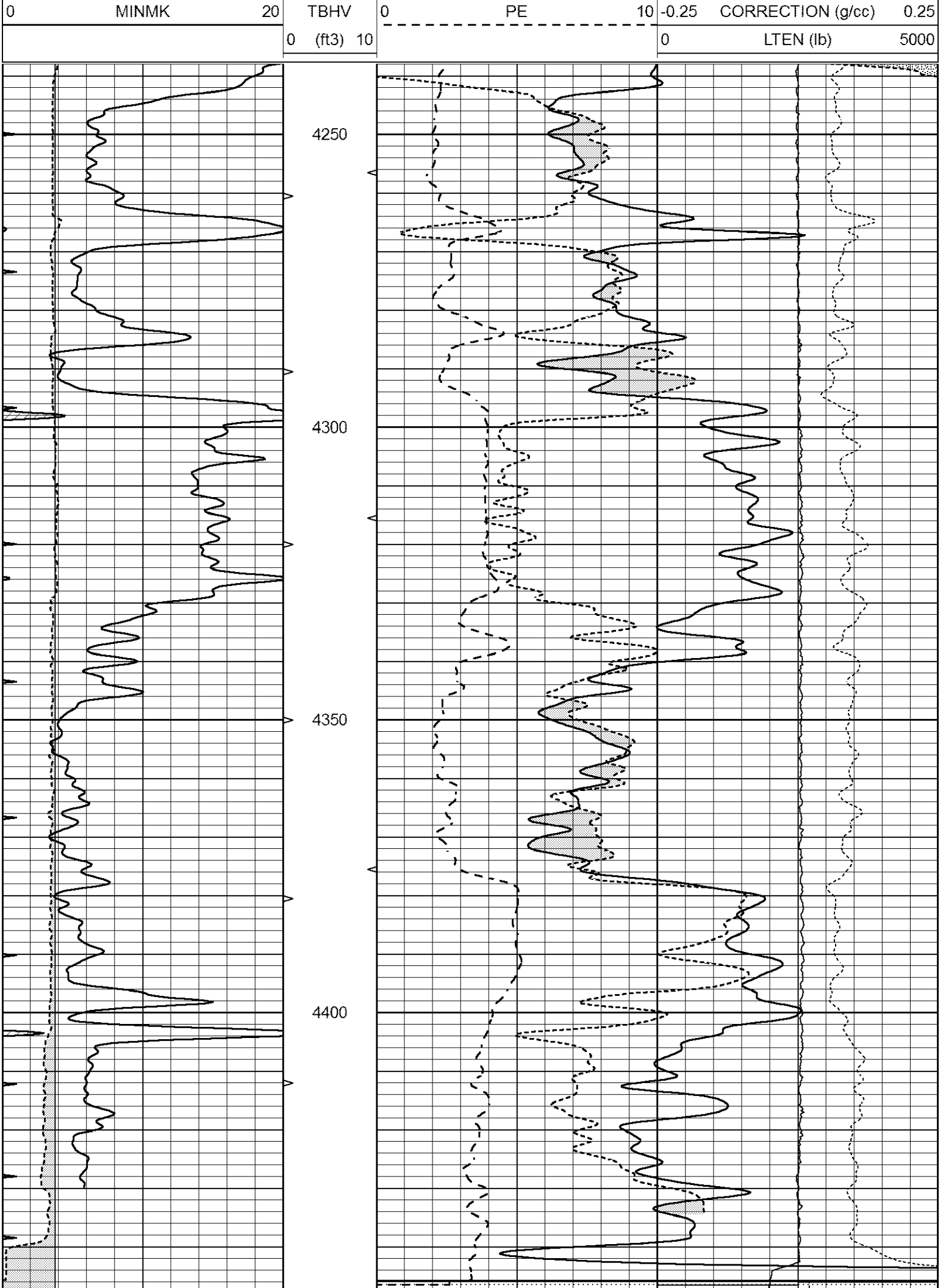




REPEAT SECTION

Database File 7706pe.db
 Dataset Pathname pass10.5
 Presentation Format _ldt_neu
 Dataset Creation Sat Jul 29 06:43:02 2023
 Charted by Depth in Feet scaled 1:240

0	GAMMA RAY (GAPI)	150	ABHV	30	COMPENSATED DENSITY (pu)	-10
6	CALIPER (in)	16	10 (ft3)	0 30	COMPENSATED NEUTRON (pu)	-10



0	GAMMA RAY (GAPI)	150	ABHV	30	COMPENSATED DENSITY (pu)				-10	
6	CALIPER (in)	16	10 (ft3)	0	30	COMPENSATED NEUTRON (pu)				-10
0	MINMK	20	TBHV	0	PE	10	-0.25	CORRECTION (g/cc)	0.25	
			0 (ft3)	10			0	LTEN (lb)	5000	