



DUAL INDUCTION LOG

Company THOMAS GARNER, INC.
Well RIPCORD #1-14
Field MOORE SOUTHWEST
County PRATT **State** KANSAS

Location: API #: 15-151-22569-0000
 1480' FNL & 2156' FWL
 NW - NE - SE - NW
 SEC 14 TWP 26S RGE 14W
Permanent Datum GROUND LEVEL Elevation 1977
Log Measured From KELLY BUSHING 11' A.G.L.
Drilling Measured From KELLY BUSHING
Other Services CDL/CNL/PE MEL/SON
Elevation K.B. 1988
 D.F. 1986
 G.L. 1977

Date	7/29/23		
Run Number	ONE		
Depth Driller	4442		
Depth Logger	4443		
Bottom Logged Interval	4441		
Top Log Interval	00		
Casing Driller	8 5/8 @ 433		
Casing Logger	433		
Bit Size	7 7/8		
Type Fluid in Hole	CHEMICAL MUD	CHLORIDES 5.000 PPM	
Density / Viscosity	9.3/73		
PH / Fluid Loss	11.0/8.8		
Source of Sample	FLOWLINE		
Rm @ Meas. Temp	.600 @ 82F		
Rmt @ Meas. Temp	.450 @ 82F		
Rmc @ Meas. Temp	.720 @ 82F		
Source of Rmf / Rmc	MEASUREMENT		
Rm @ BHT	.410 @ 120F		
Time Circulation Stopped	2 HOURS		
Time Logger on Bottom	1:00 A.M.		
Maximum Recorded Temperature	120F		
Equipment Number	8916		
Location	HAYS, KANSAS		
Recorded By	COLE ROBBEN		
Witnessed By	KEITH REAVIS		

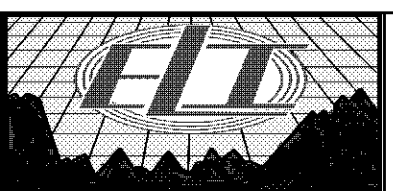
<<< Fold Here >>>

All interpretations are opinions based on inferences from electrical or other measurements and we cannot and do not guarantee the accuracy or correctness of any interpretation, and we shall not, except in the case of gross or willful negligence on our part, be liable or responsible for any loss, costs, damages, or expenses incurred or sustained by anyone resulting from any interpretation made by any of our officers, agents or employees. These interpretations are also subject to our general terms and conditions set out in our current Price Schedule.

Comments

THANK YOU FOR USING ELI WIRELINE SERVICES, HAYS, KS. (785) 628-6395

DIRECTIONS:
 FROM HIGHWAY 281/BYERS BLACK TOP GO 5 MILES WEST TO NORTHWEST 50TH AVENUE,
 1/2 MILE NORTH, EAST INTO

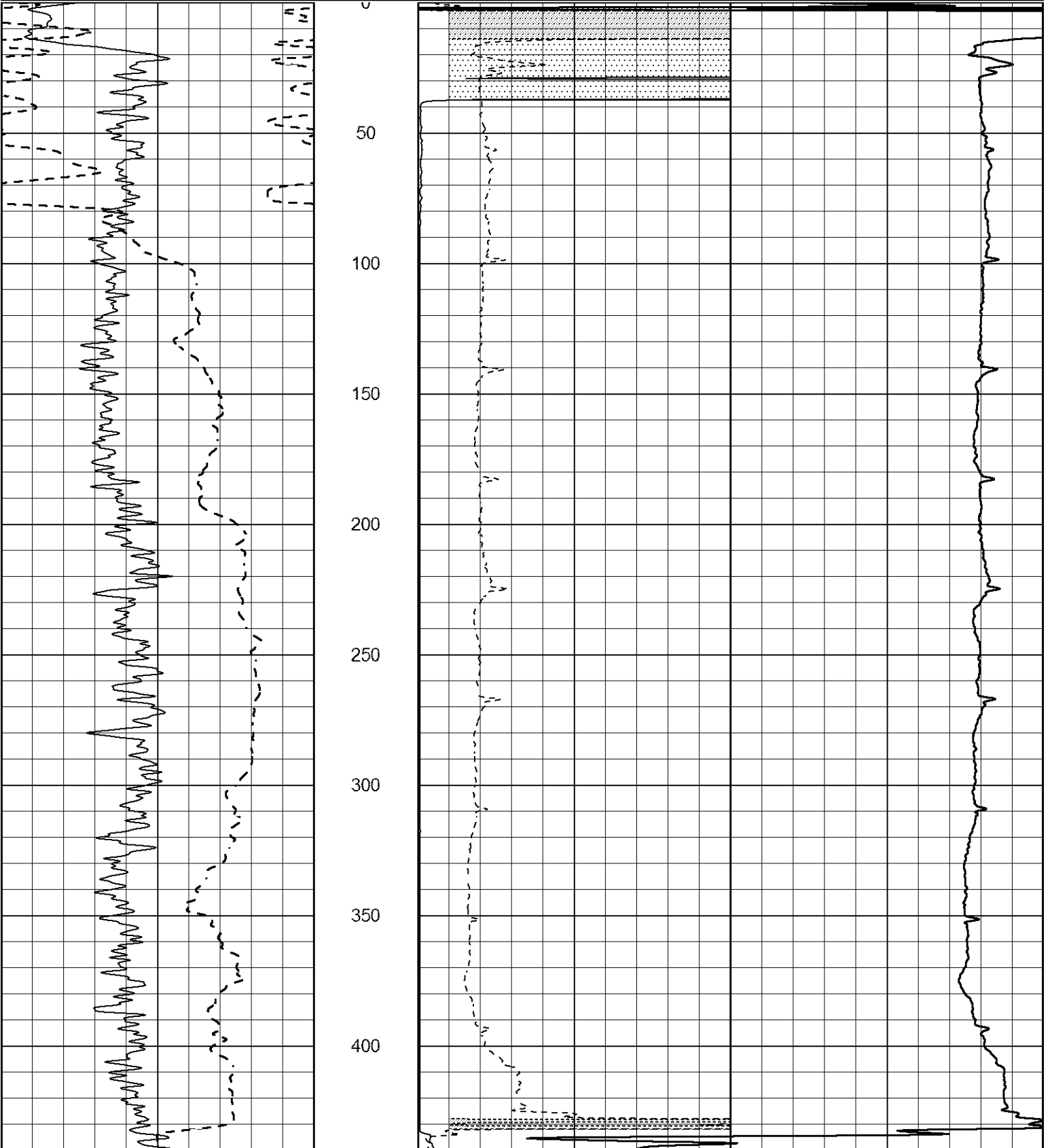


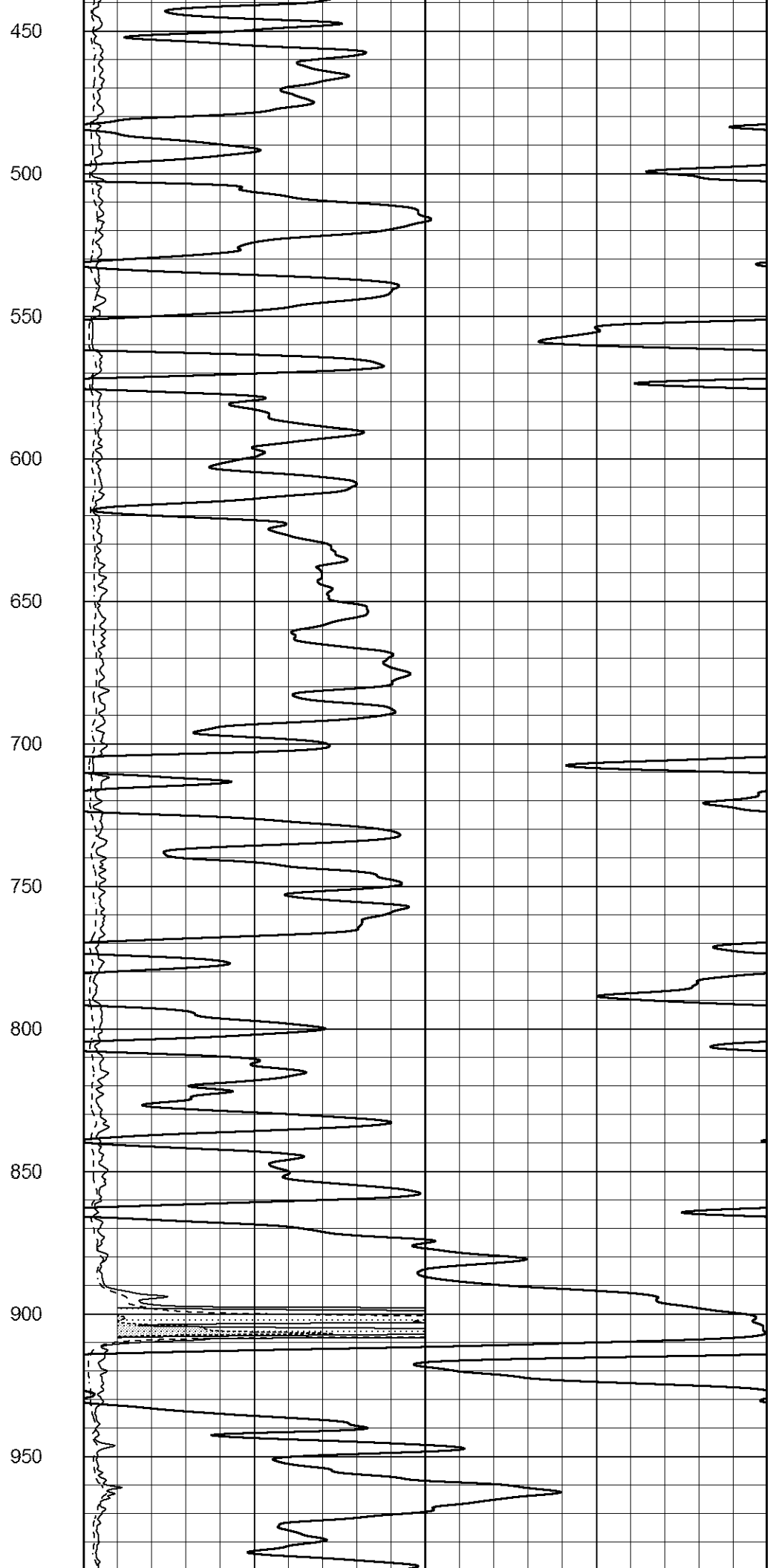
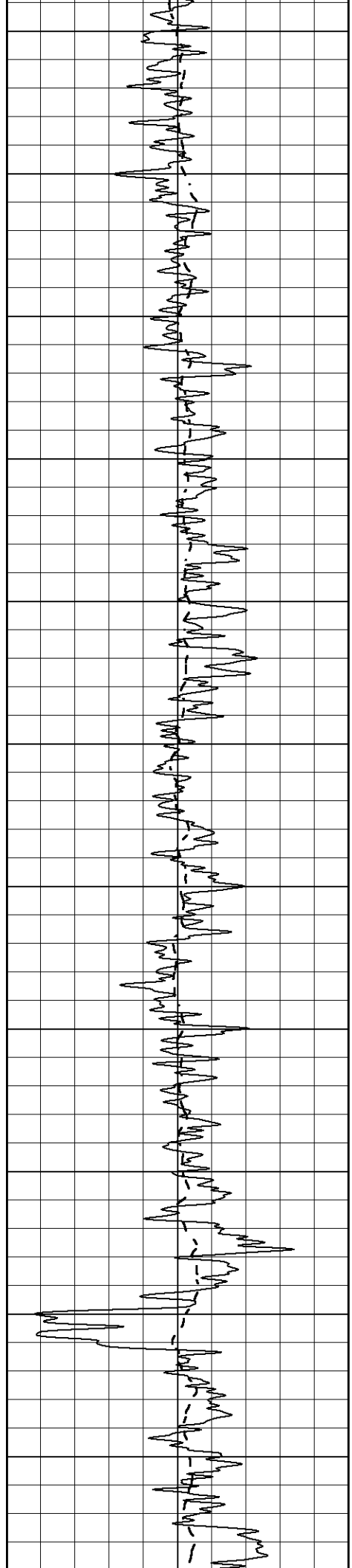
MAIN SECTION

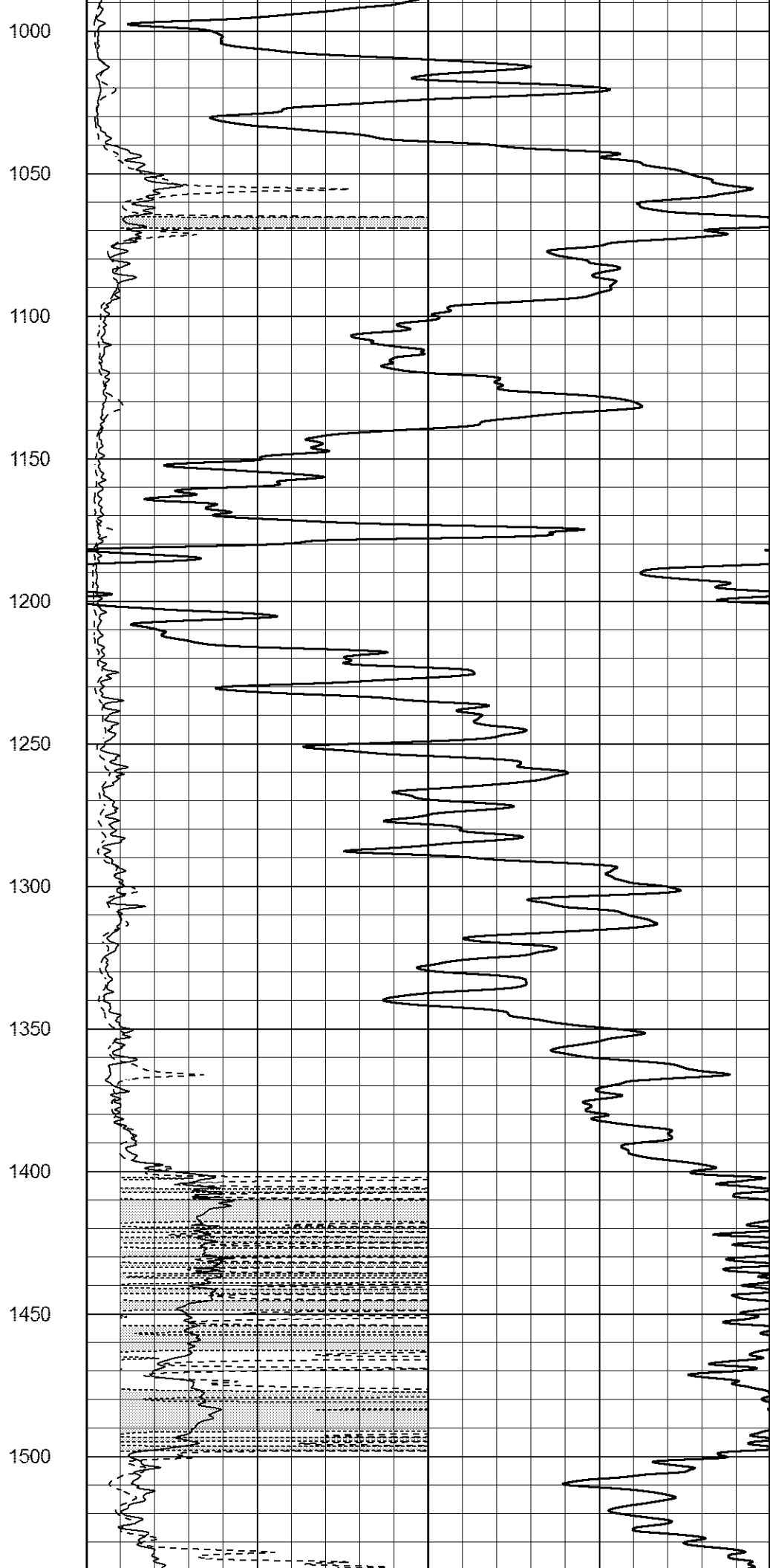
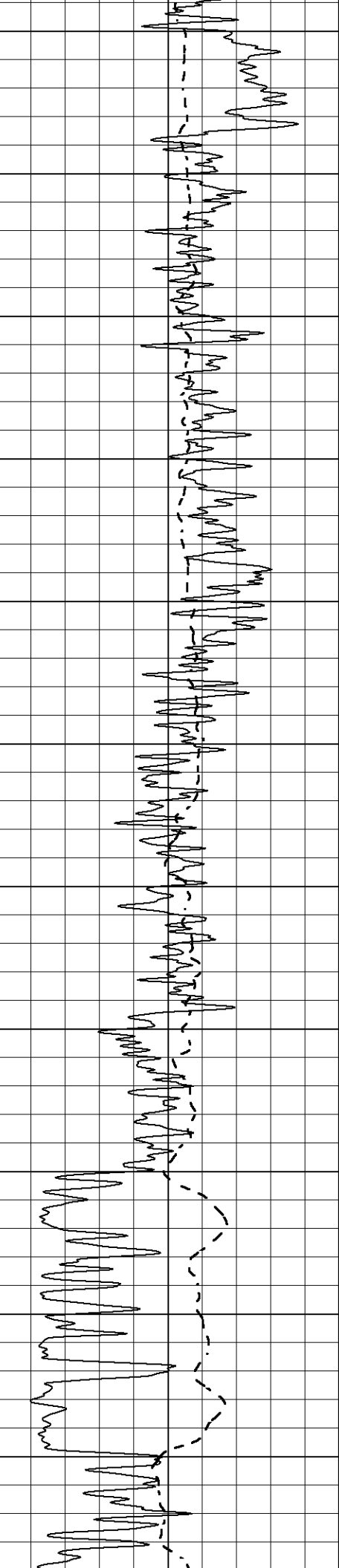
Database File 7706pe.db
 Dataset Pathname pass4M
 Presentation Format _dil2
 Dataset Creation Sat Jul 29 03:12:13 2023
 Charted by Depth in Feet scaled 1:600

0 Gamma Ray (GAPI) 150
 -100 SP (mV) 100

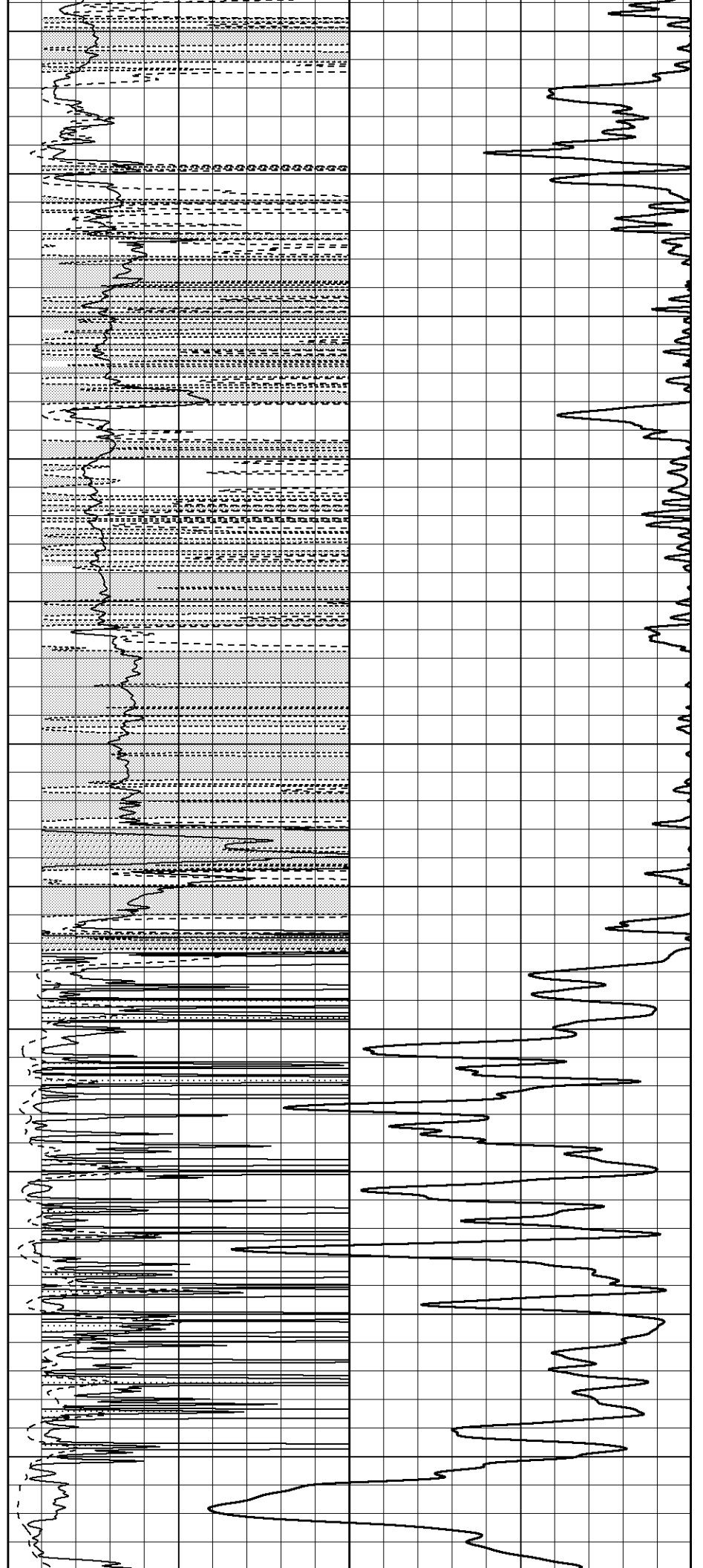
1000 CILD (mmho/m) 0
 0 RLL3 (Ohm-m) 50
 0 Deep Induction (Ohm-m) 50
 50 RILD X10 (Ohm-m) 500
 50 RLL3 X10 (Ohm-m) 500



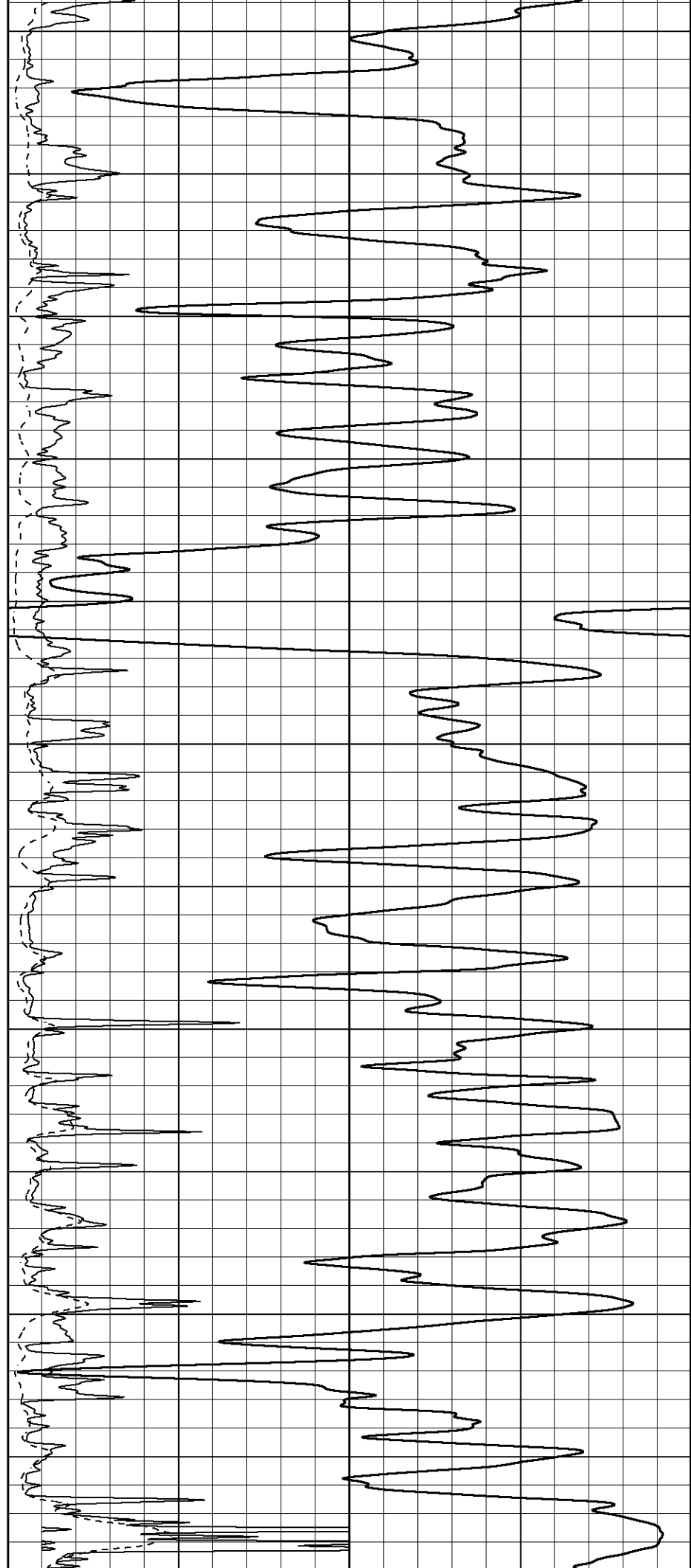
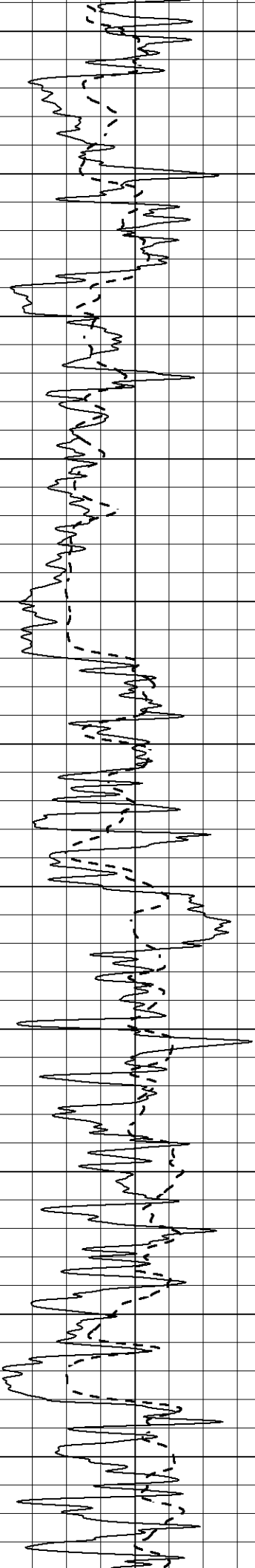




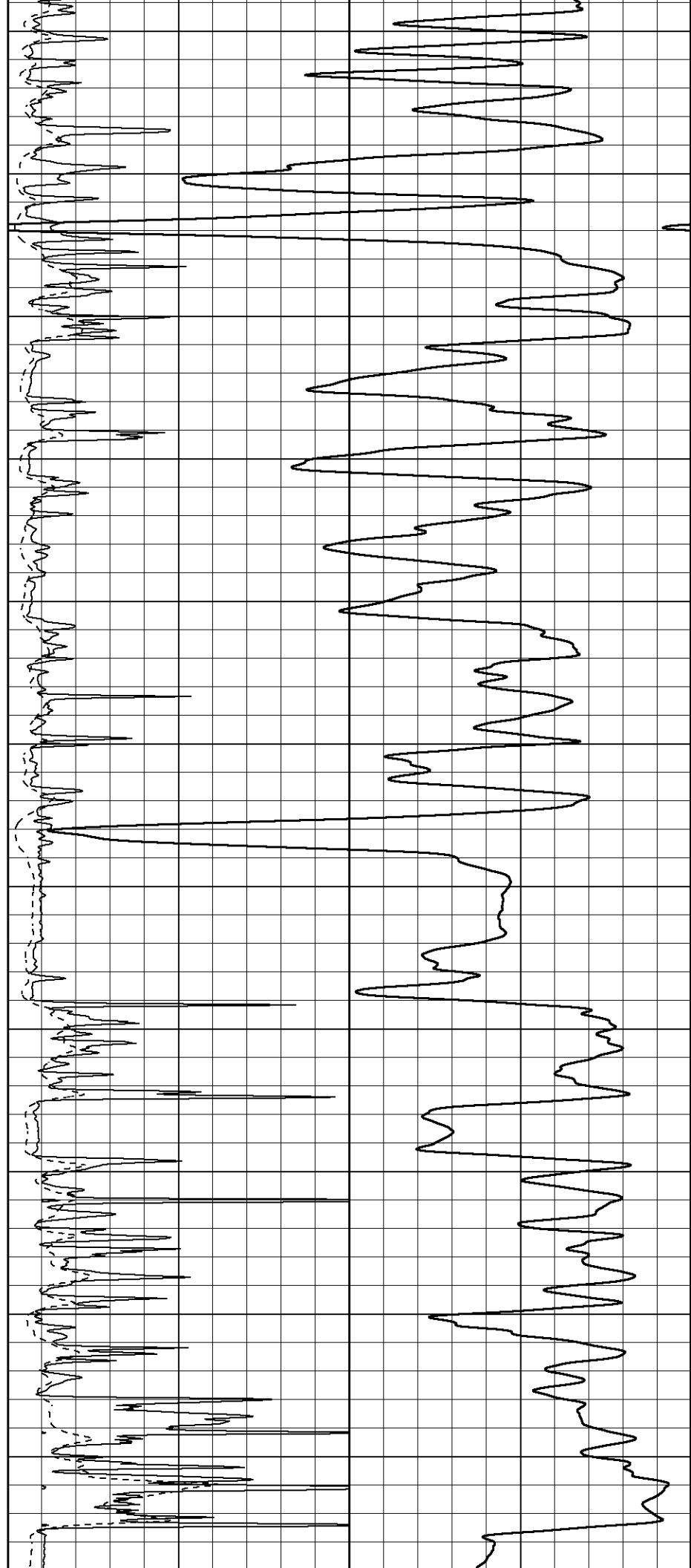
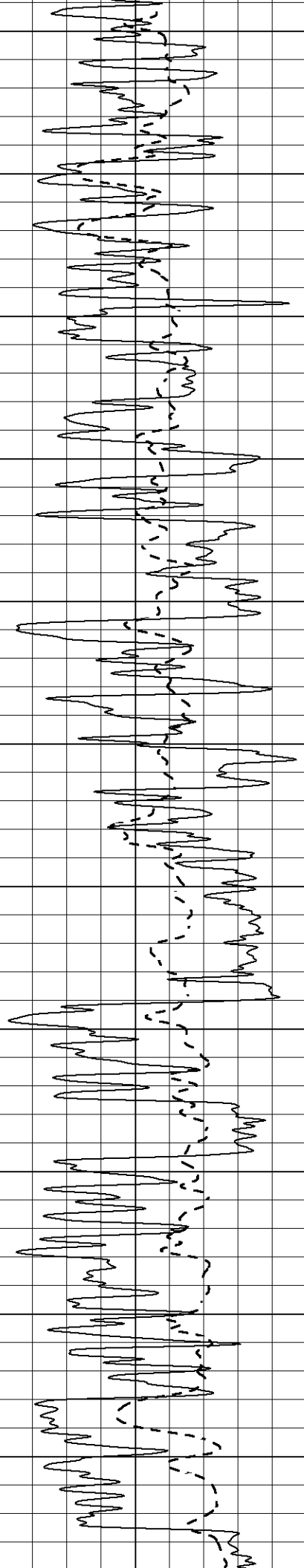
1550
1600
1650
1700
1750
1800
1850
1900
1950
2000
2050

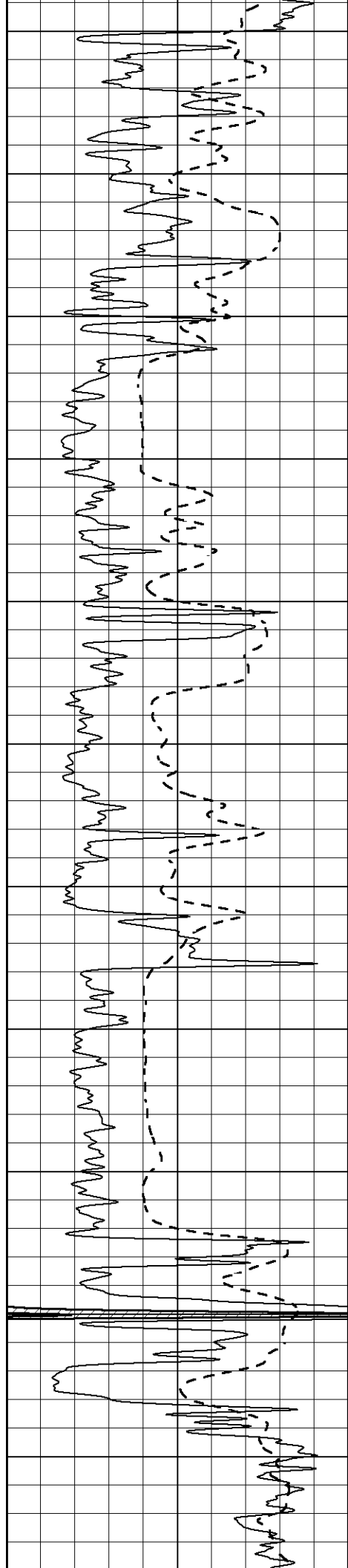


2100
2150
2200
2250
2300
2350
2400
2450
2500
2550
2600

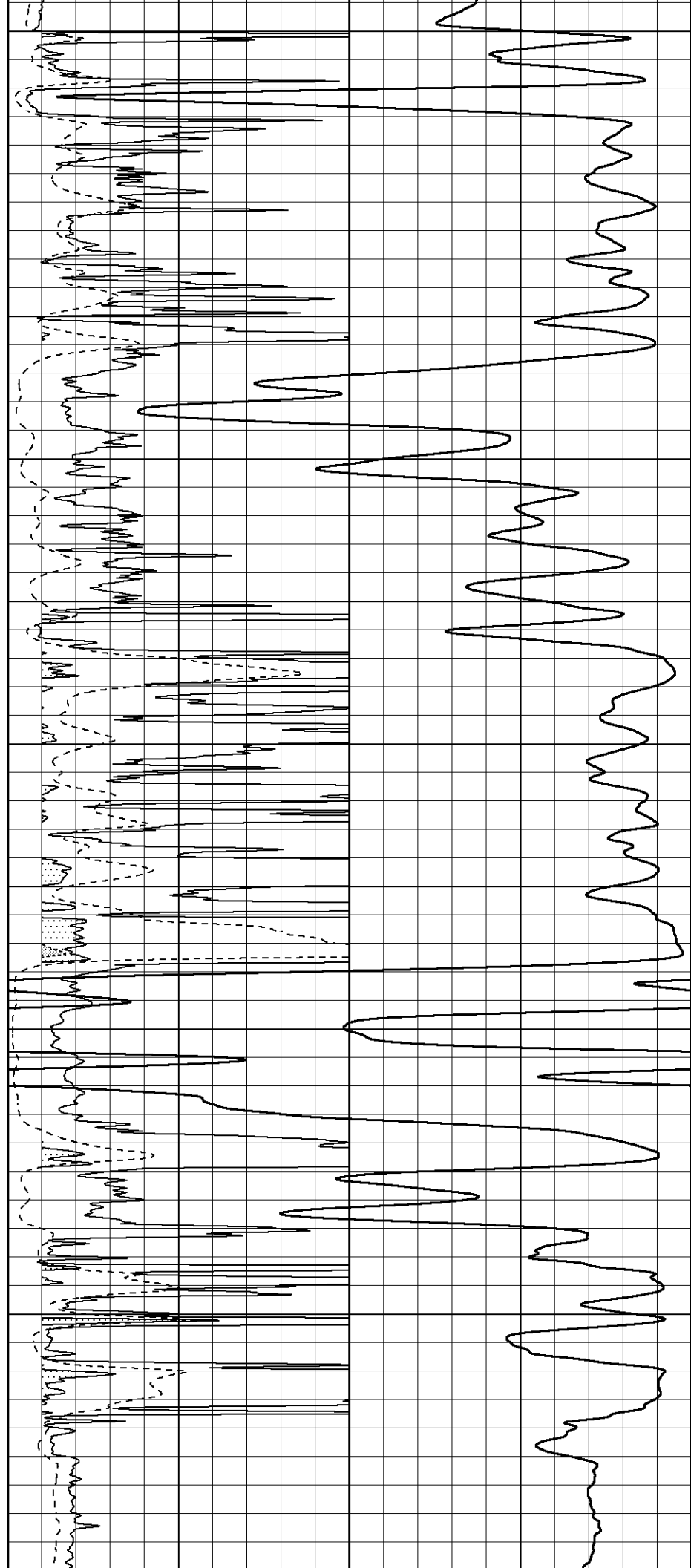


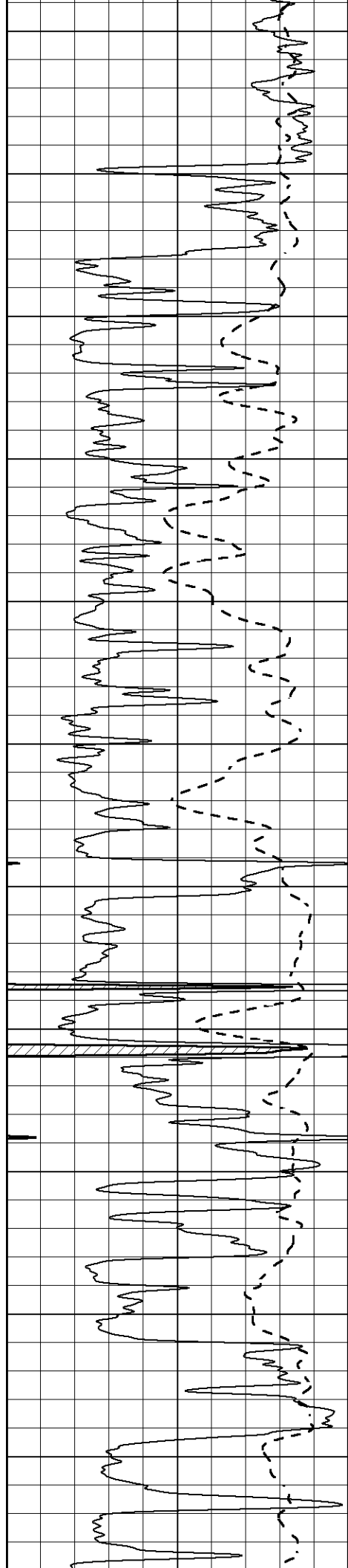
2650
2700
2750
2800
2850
2900
2950
3000
3050
3100
3150



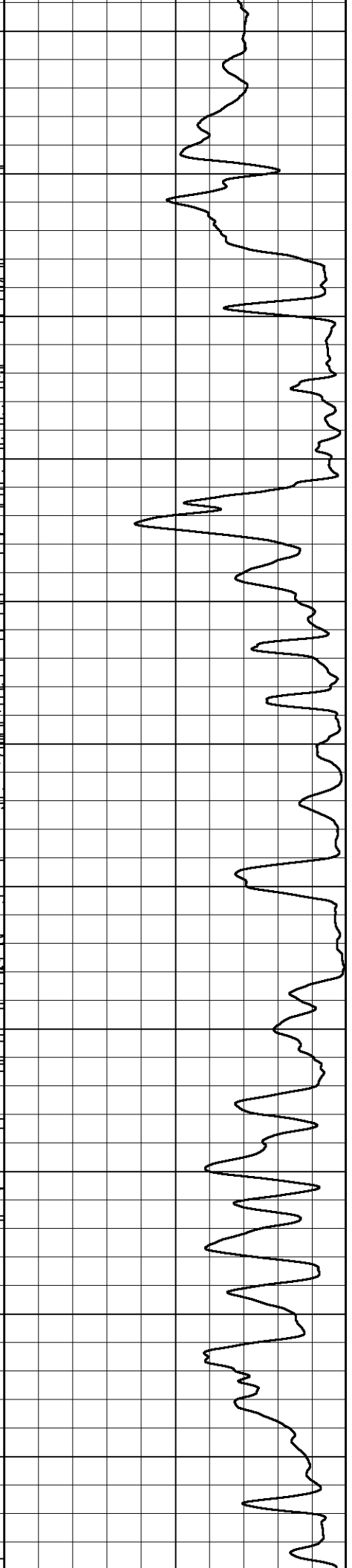
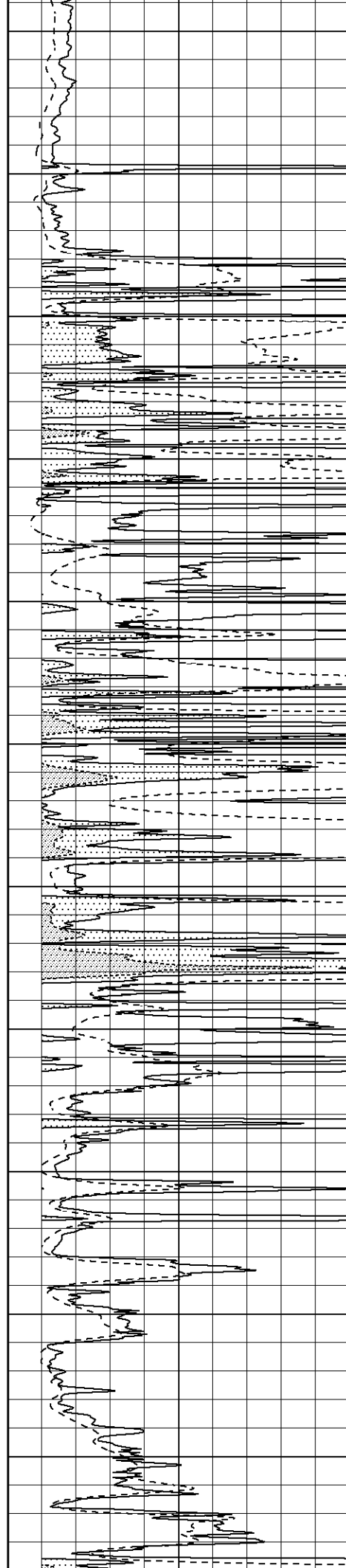


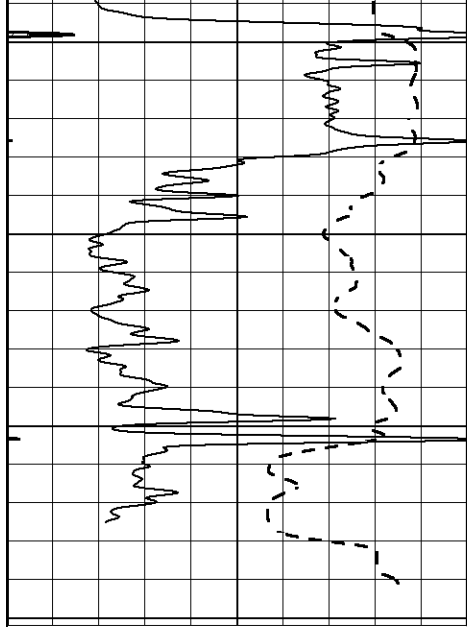
3200
3250
3300
3350
3400
3450
3500
3550
3600
3650
3700





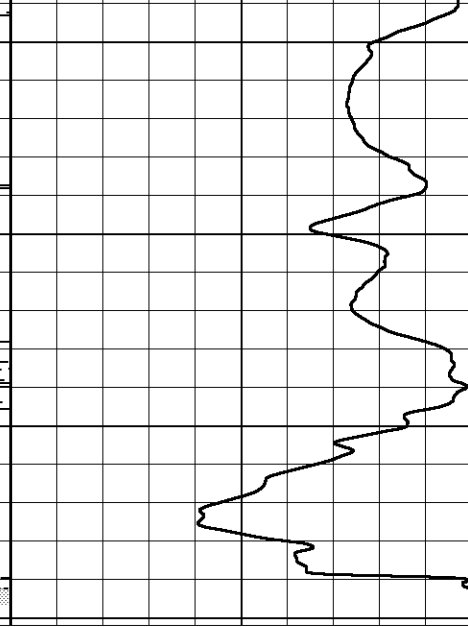
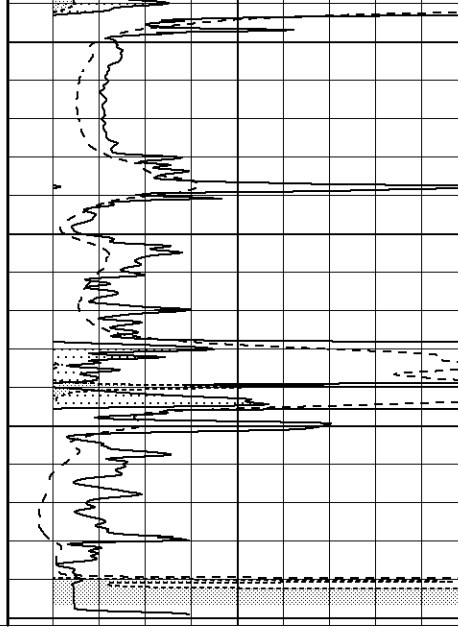
3750
3800
3850
3900
3950
4000
4050
4100
4150
4200
4250





4300
4350
4400
4450

0 Gamma Ray (GAPI) 150
-100 SP (mV) 100



1000 CILD (mmho/m) 0

0 RLL3 (Ohm-m) 50

0 Deep Induction (Ohm-m) 50

50 RILD X10 (Ohm-m) 500

50 RLL3 X10 (Ohm-m) 500

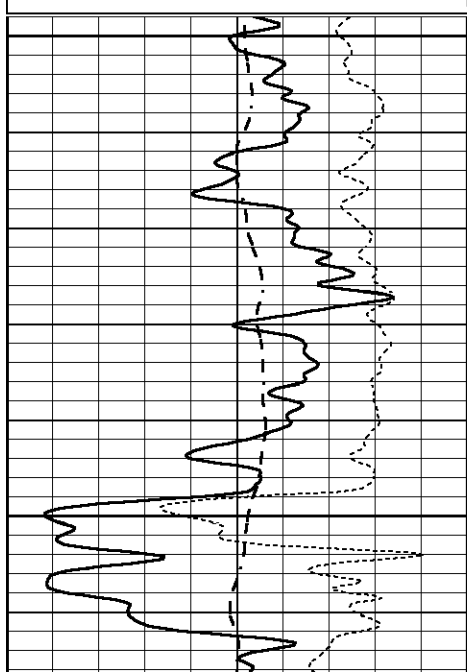


ANHYDRITE

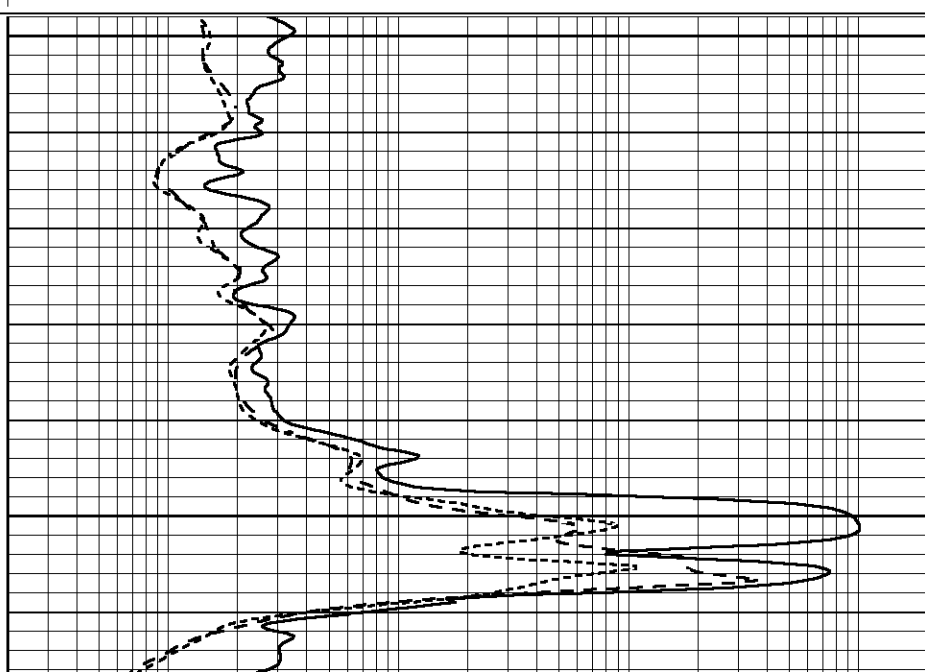
Database File 7706pe.db
Dataset Pathname pass4AA
Presentation Format _dil
Dataset Creation Sat Jul 29 03:30:00 2023
Charted by Depth in Feet scaled 1:240

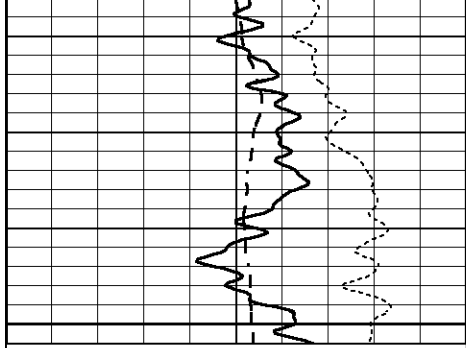
0 GAMMA RAY (GAPI) 150
-100 SP (mV) 100
-250 Rxo/Rt 50

0.2 SHALLOW GUARD (Ohm-m) 2000
0.2 MEDIUM INDUCTION (Ohm-m) 2000
0.2 DEEP INDUCTION (Ohm-m) 2000



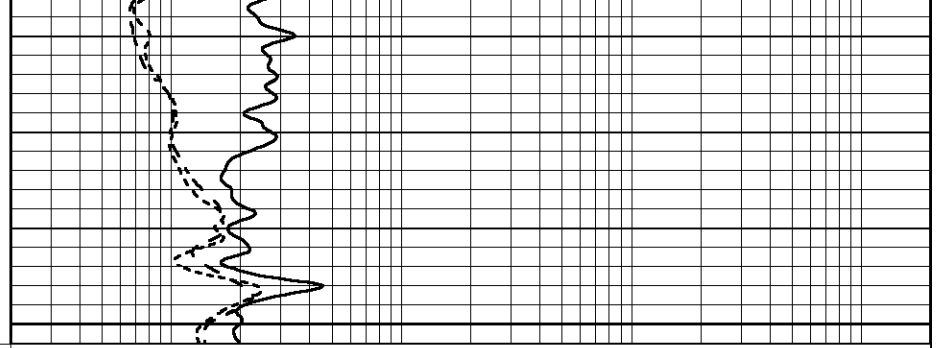
850
900





0	GAMMA RAY (GAPI)	150
-100	SP (mV)	100
-250	Rxo/Rt	50

950



0.2	SHALLOW GUARD (Ohm-m)	2000
0.2	MEDIUM INDUCTION (Ohm-m)	2000
0.2	DEEP INDUCTION (Ohm-m)	2000

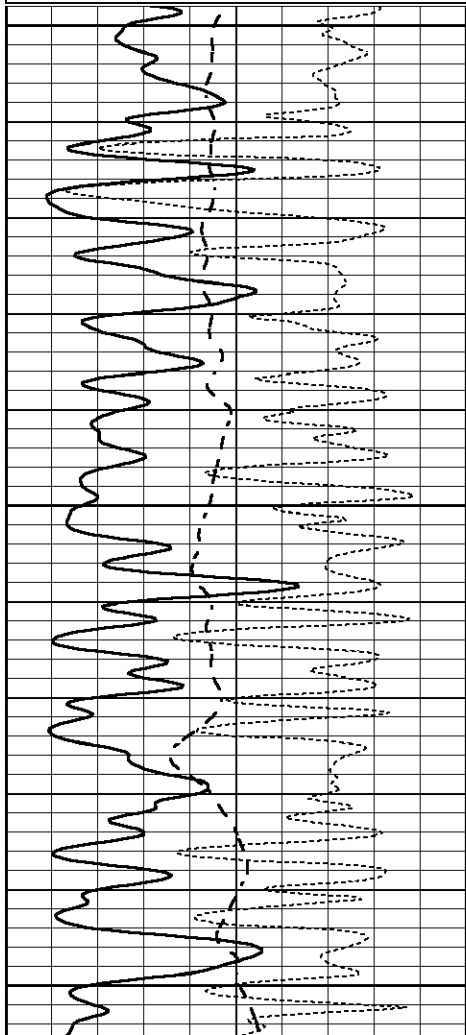


MAIN SECTION

Database File 7706pe.db
 Dataset Pathname pass4M
 Presentation Format _dil
 Dataset Creation Sat Jul 29 03:12:13 2023
 Charted by Depth in Feet scaled 1:240

0	GAMMA RAY (GAPI)	150
-100	SP (mV)	100
-250	Rxo/Rt	50

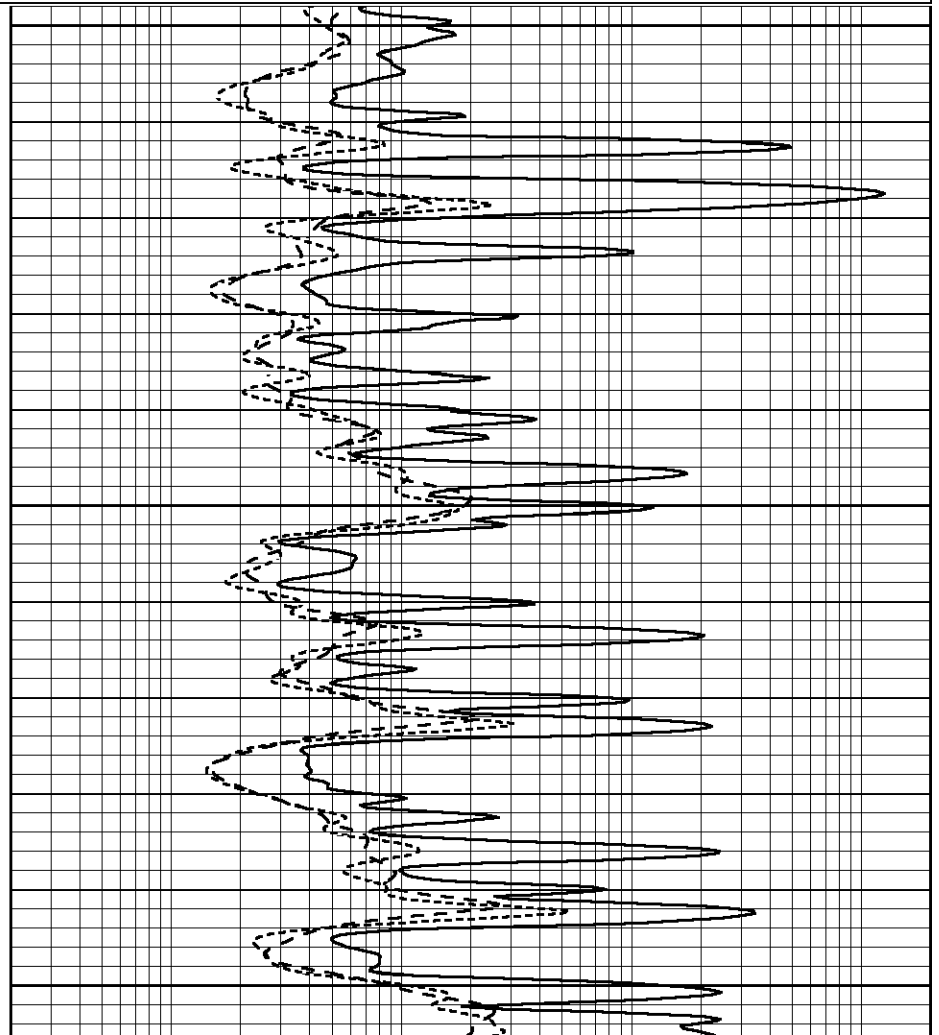
0.2	SHALLOW GUARD (Ohm-m)	2000
0.2	MEDIUM INDUCTION (Ohm-m)	2000
0.2	DEEP INDUCTION (Ohm-m)	2000

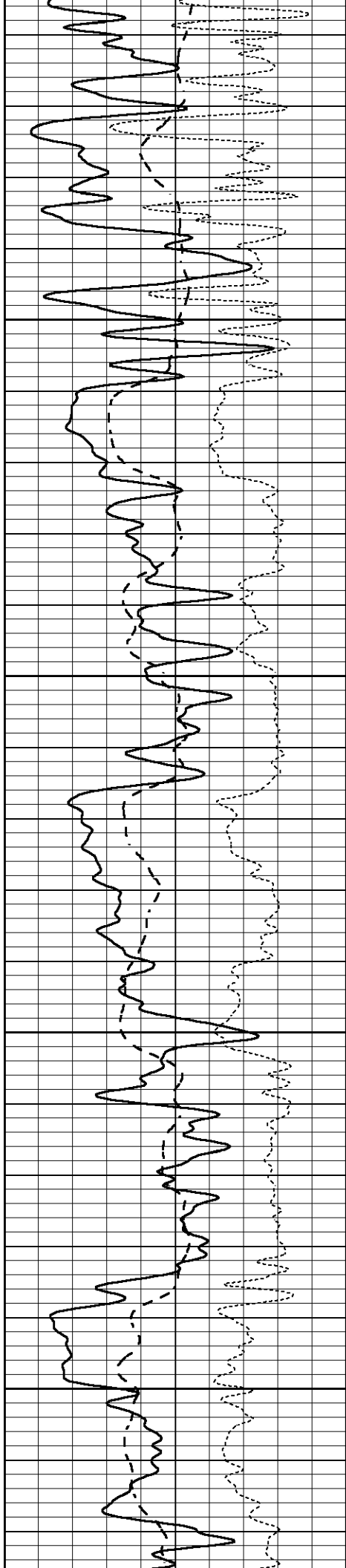


1900

1950

2000



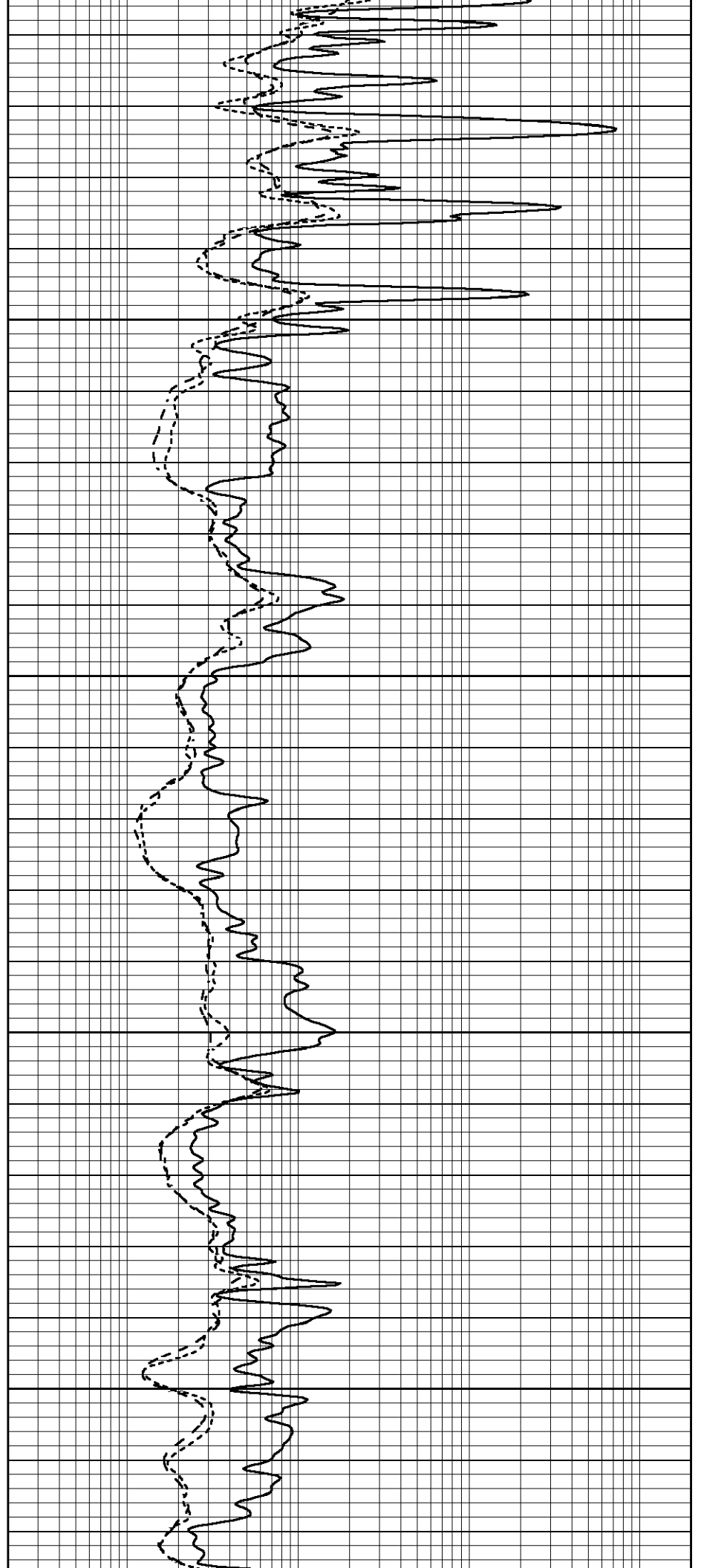


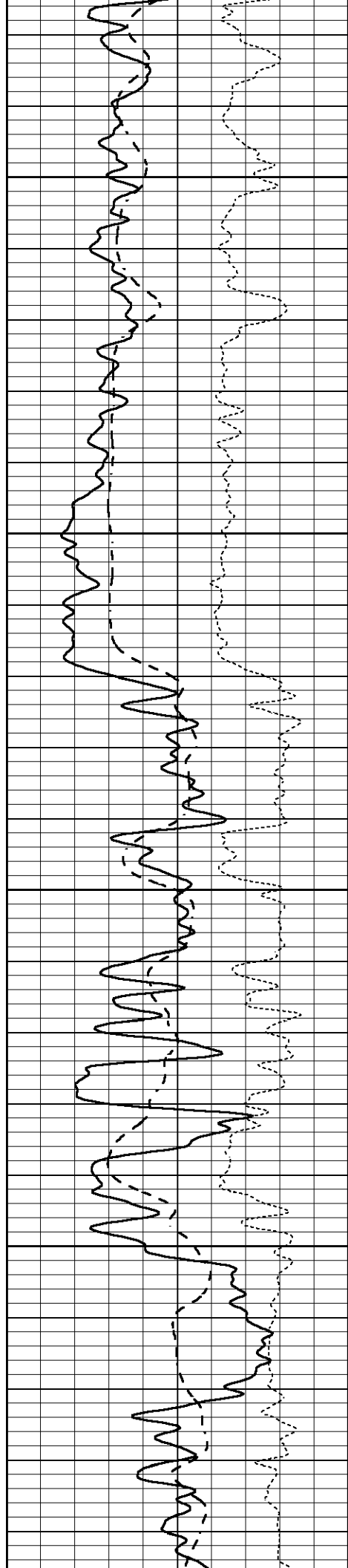
2050

2100

2150

2200



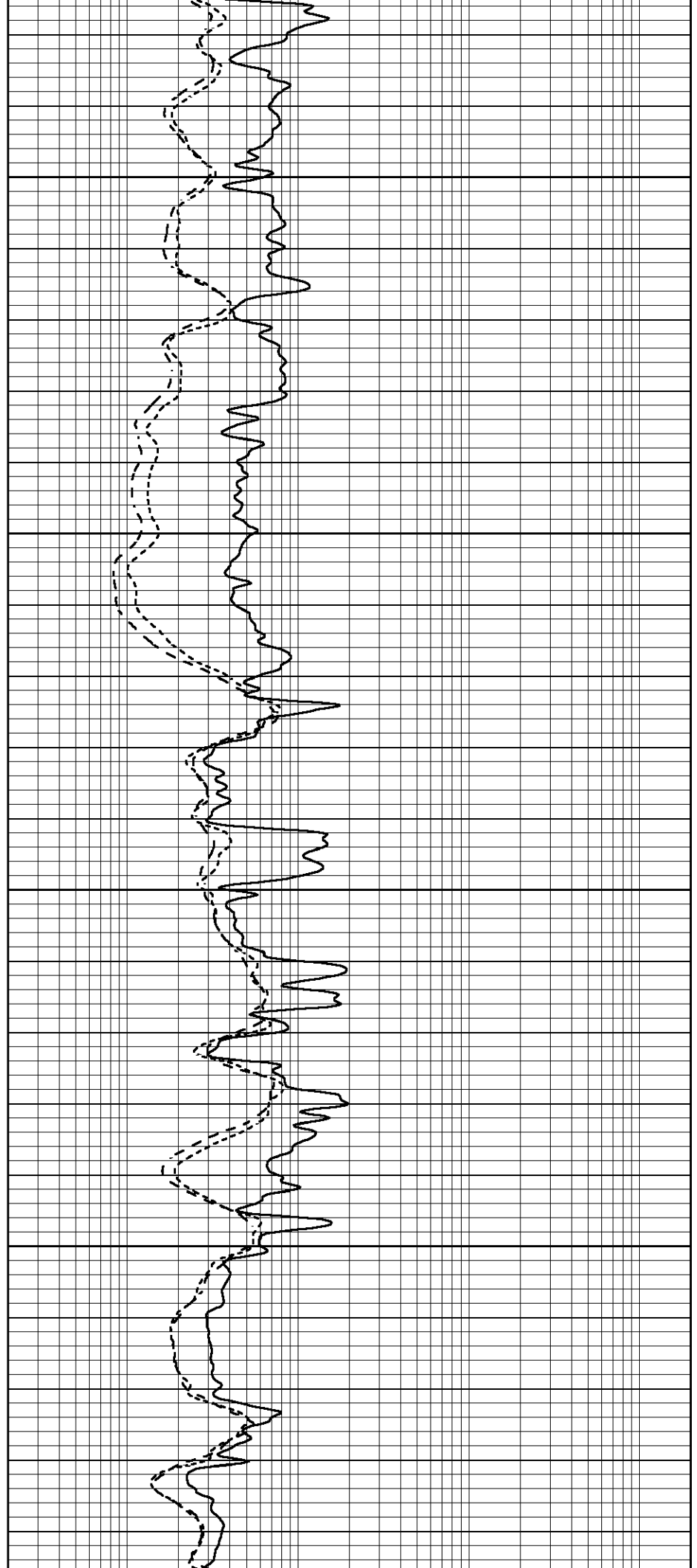


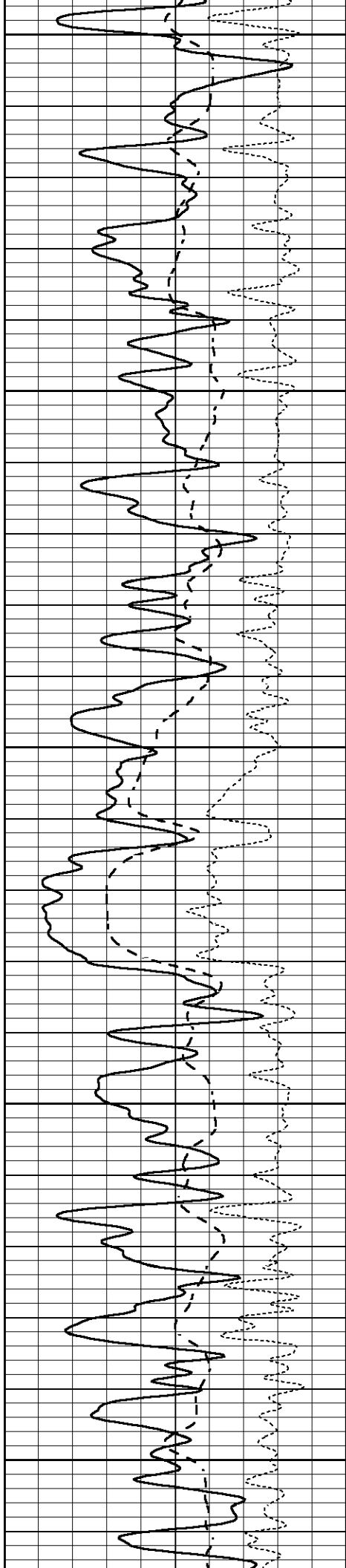
2250

2300

2350

2400





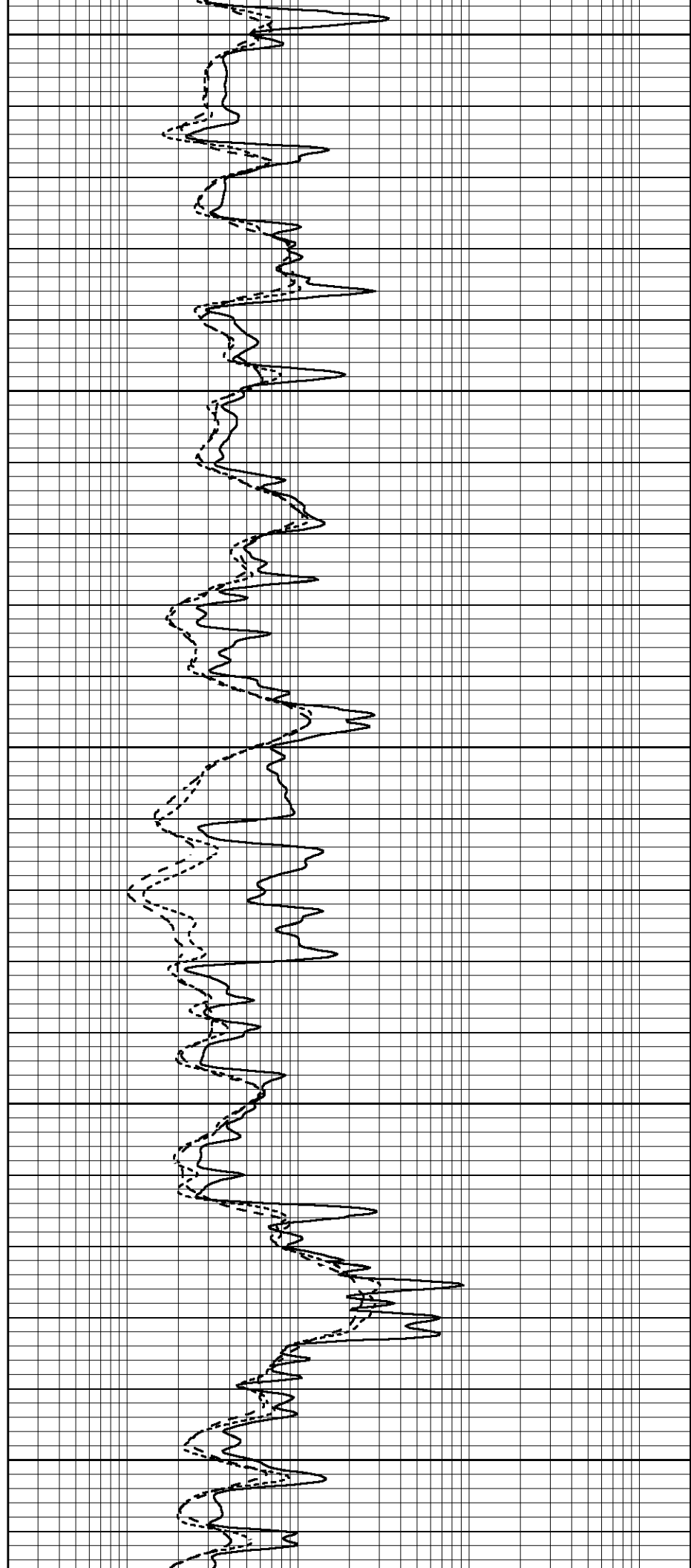
2450

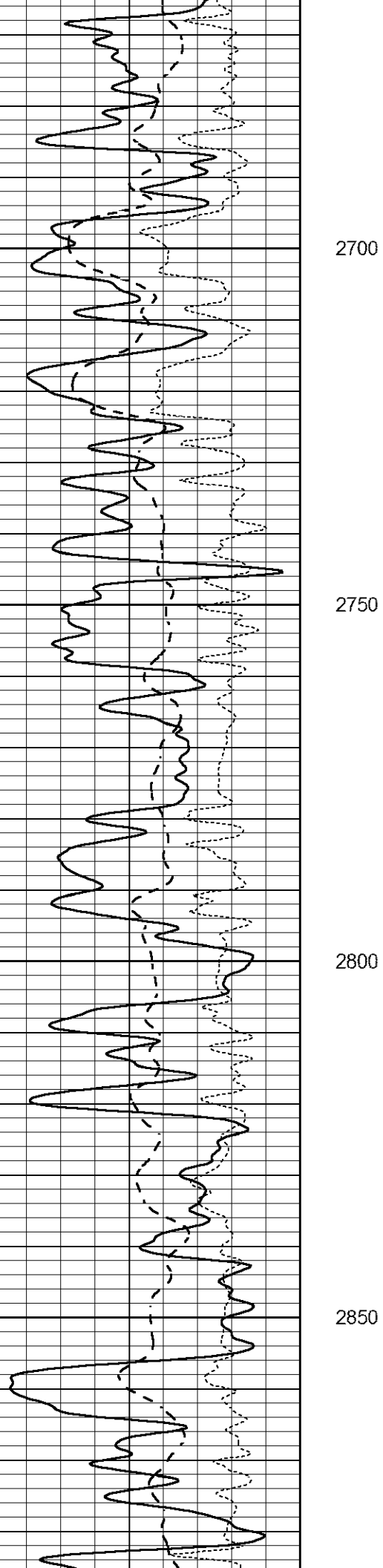
2500

2550

2600

2650



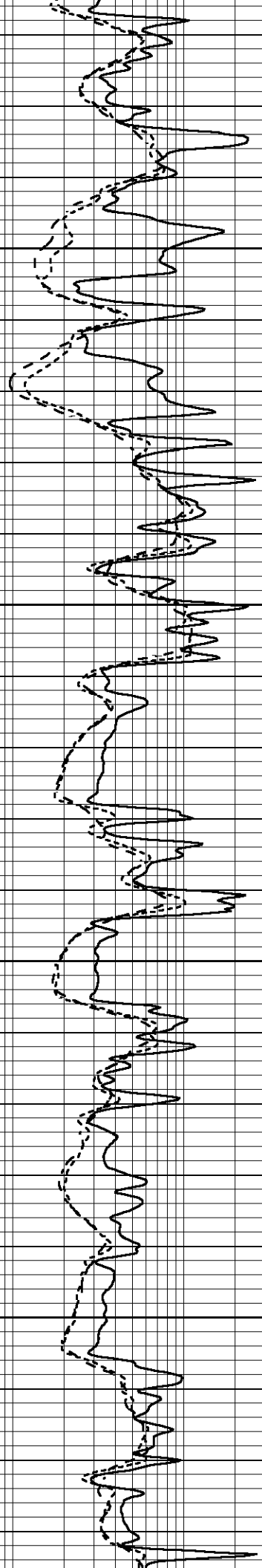


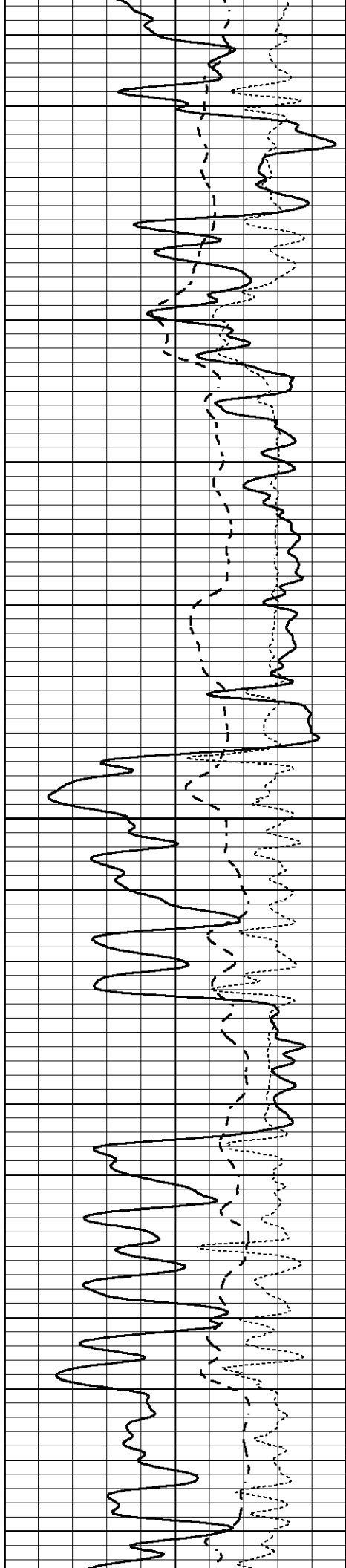
2700

2750

2800

2850





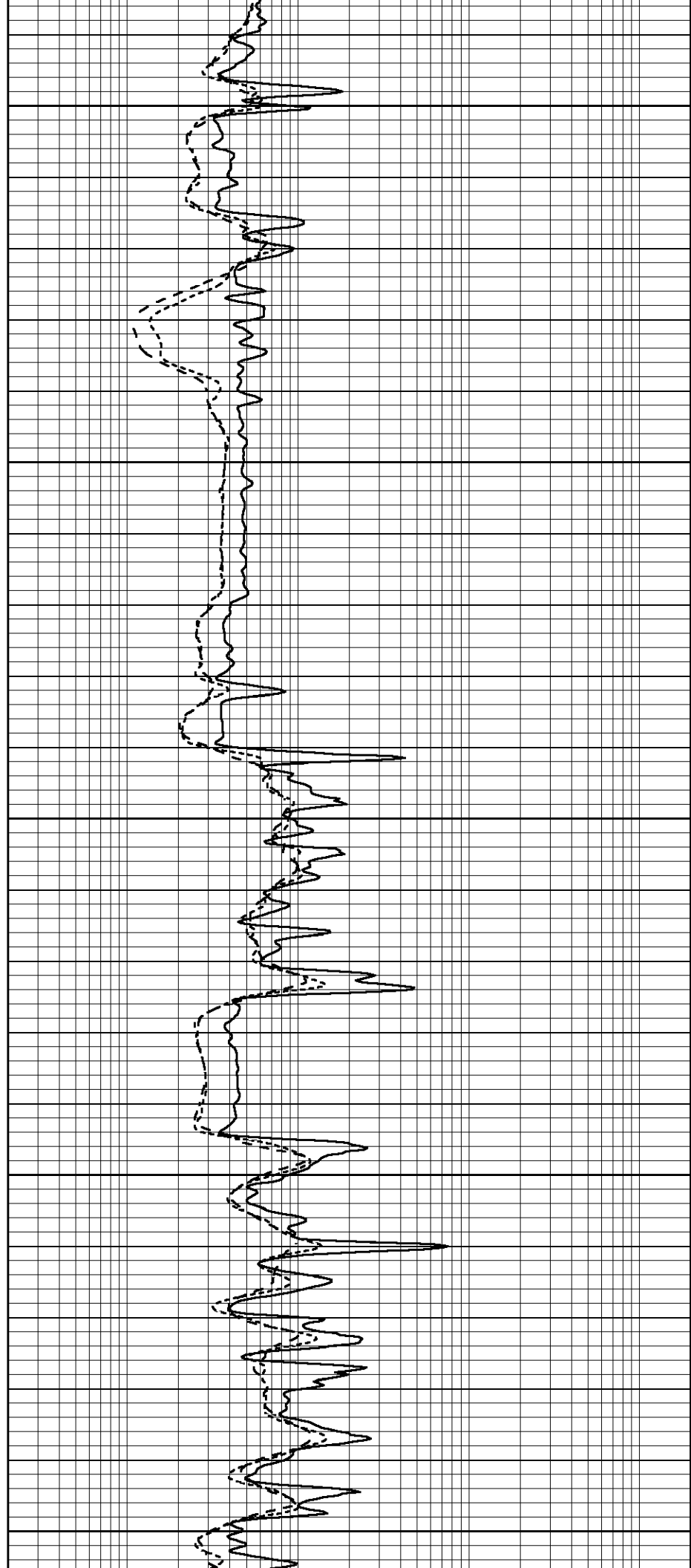
2900

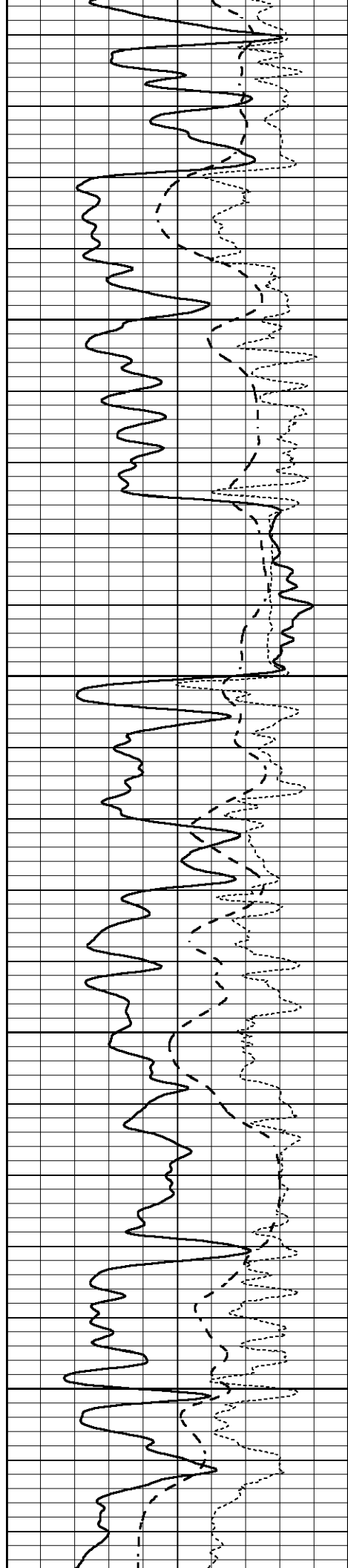
2950

3000

3050

3100



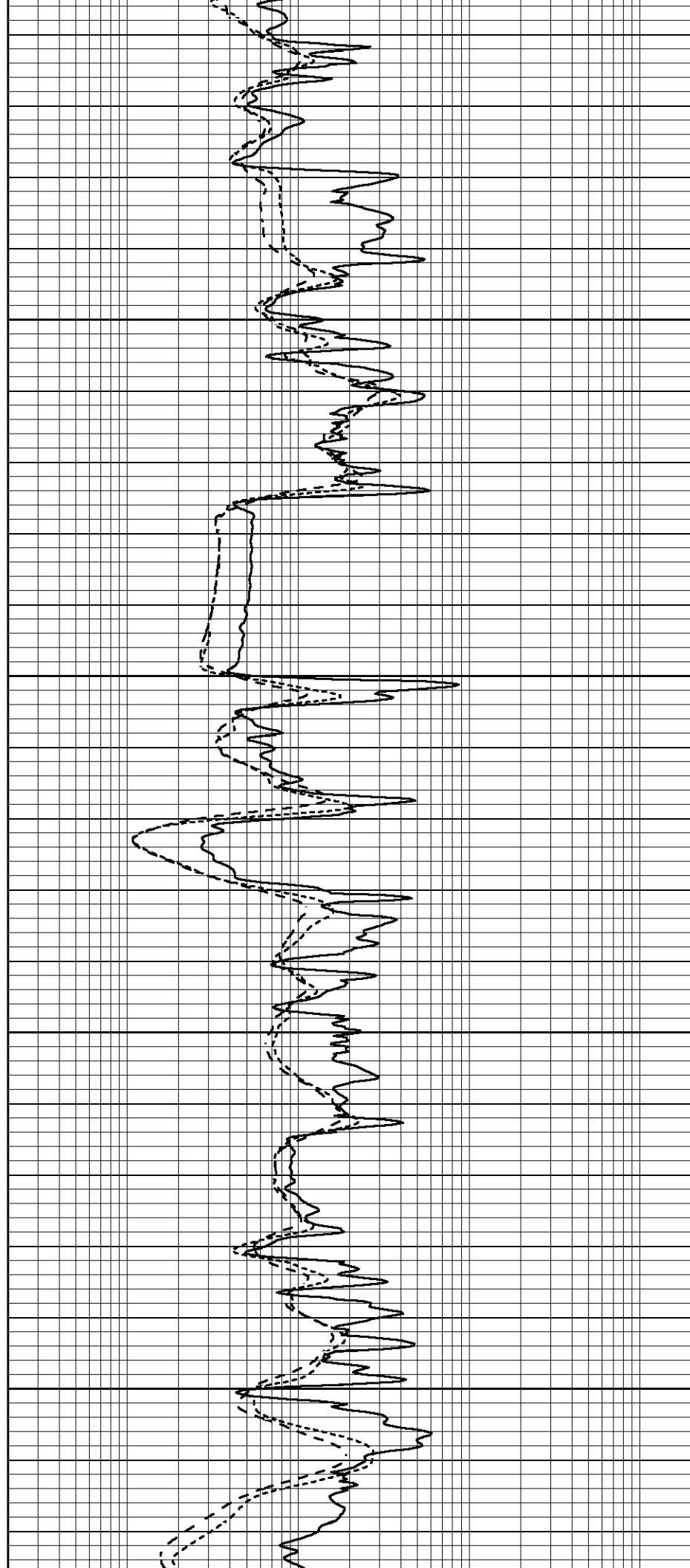


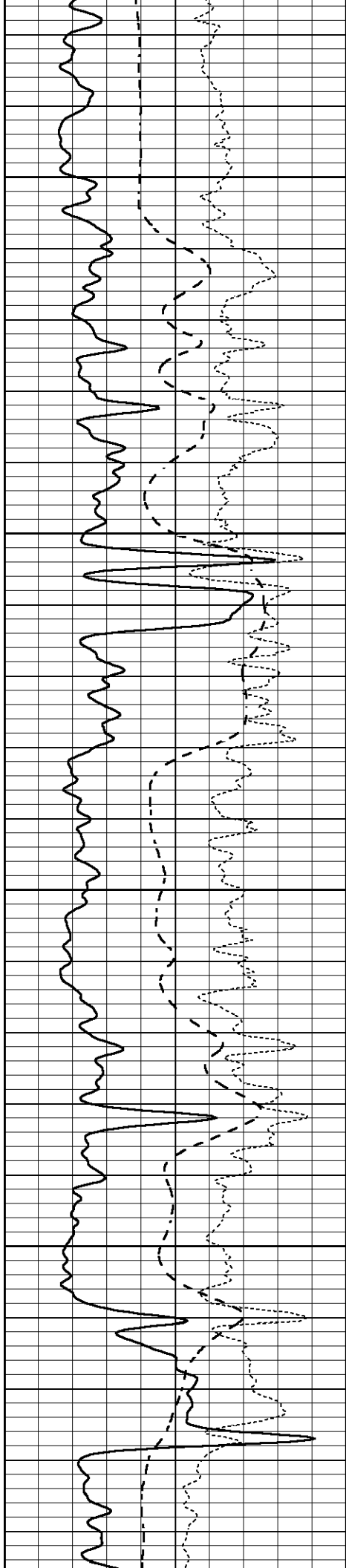
3150

3200

3250

3300



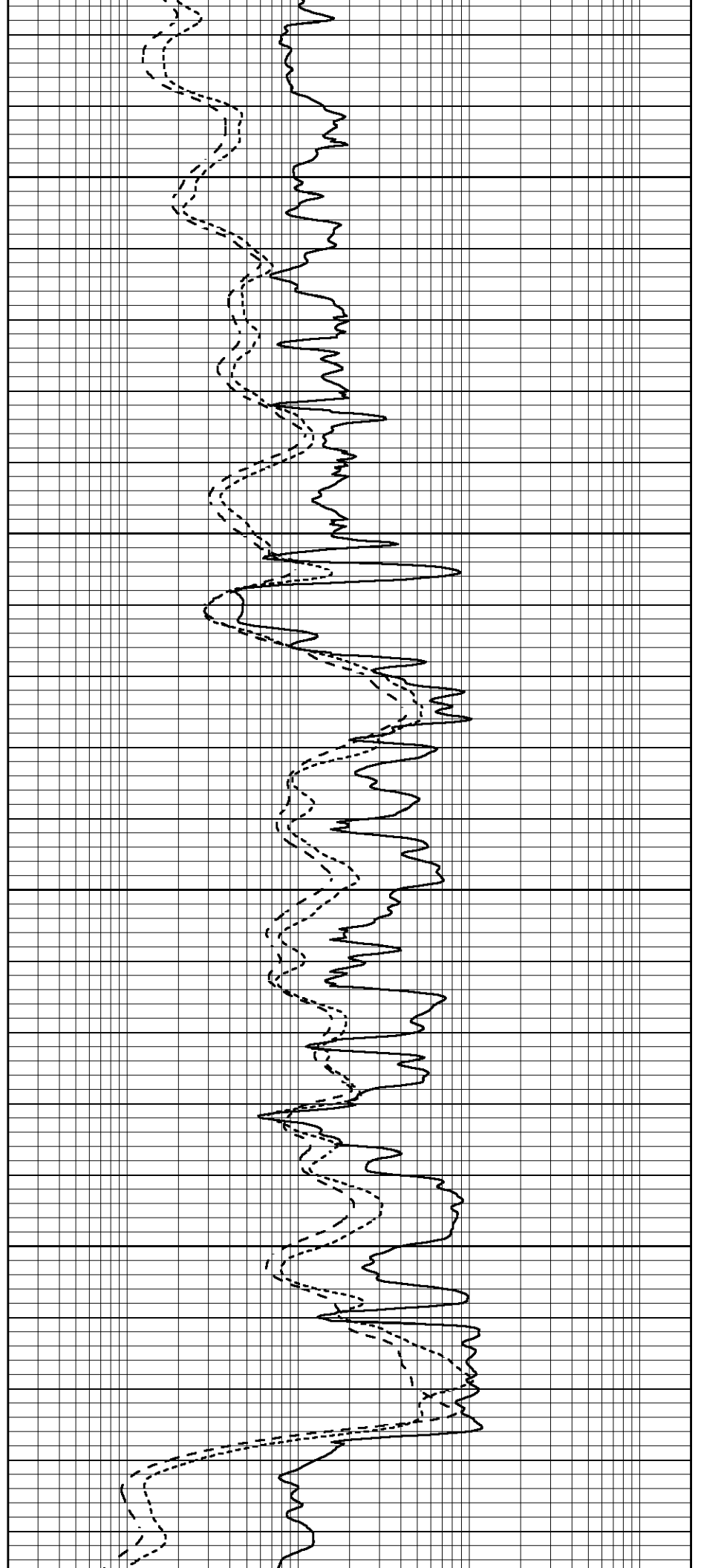


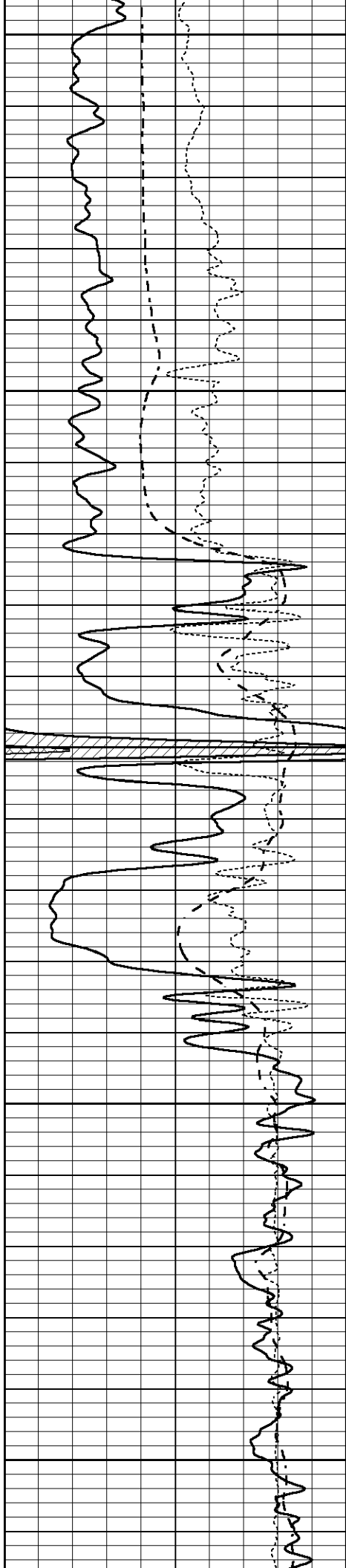
3350

3400

3450

3500





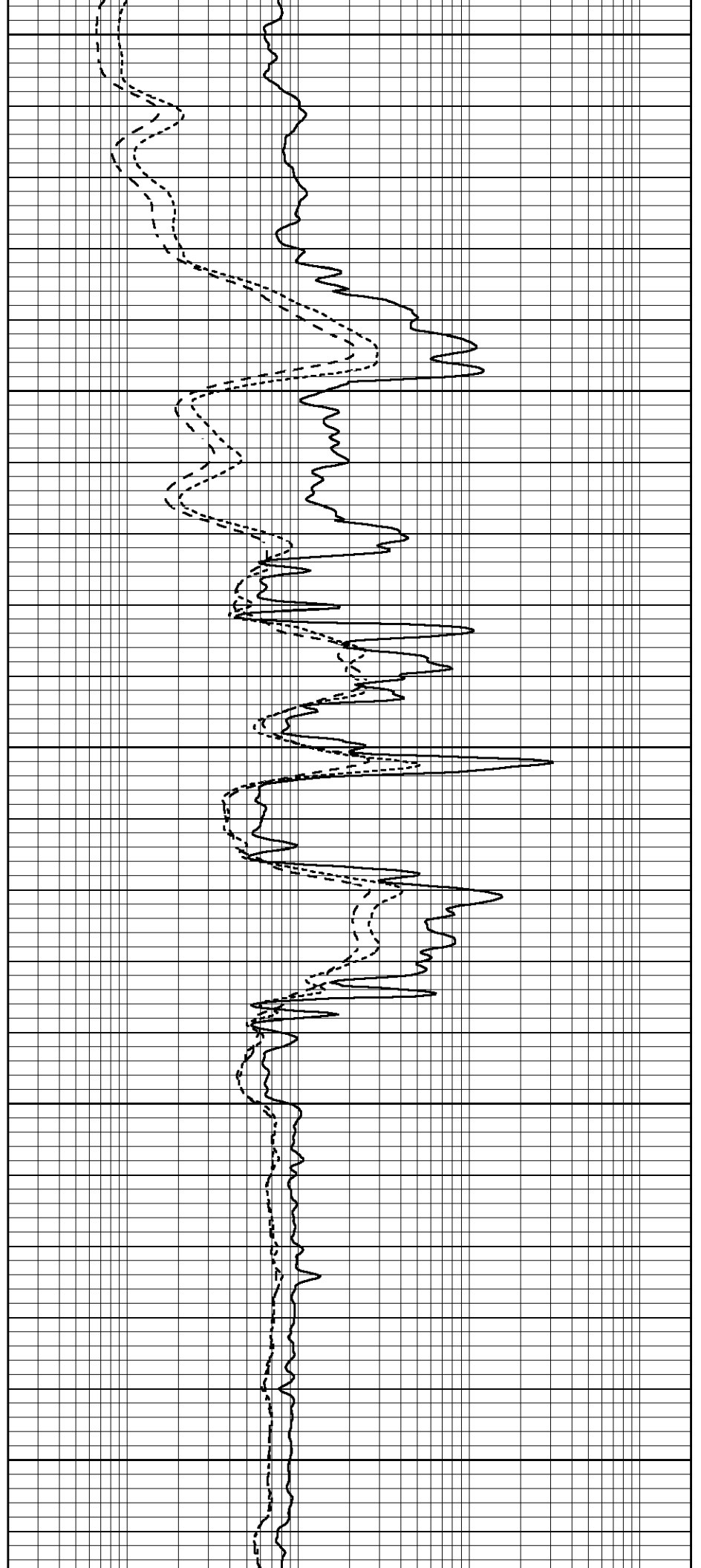
3550

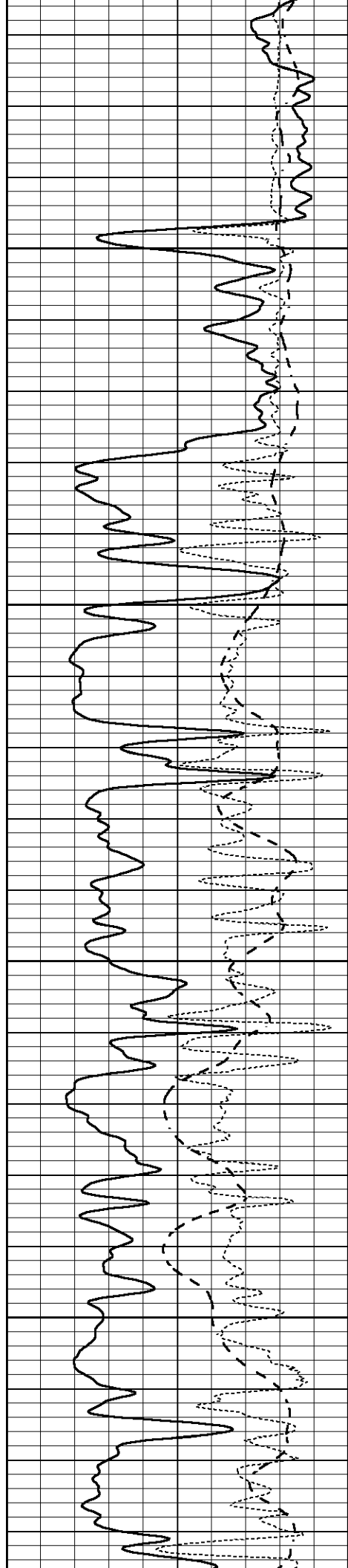
3600

3650

3700

3750



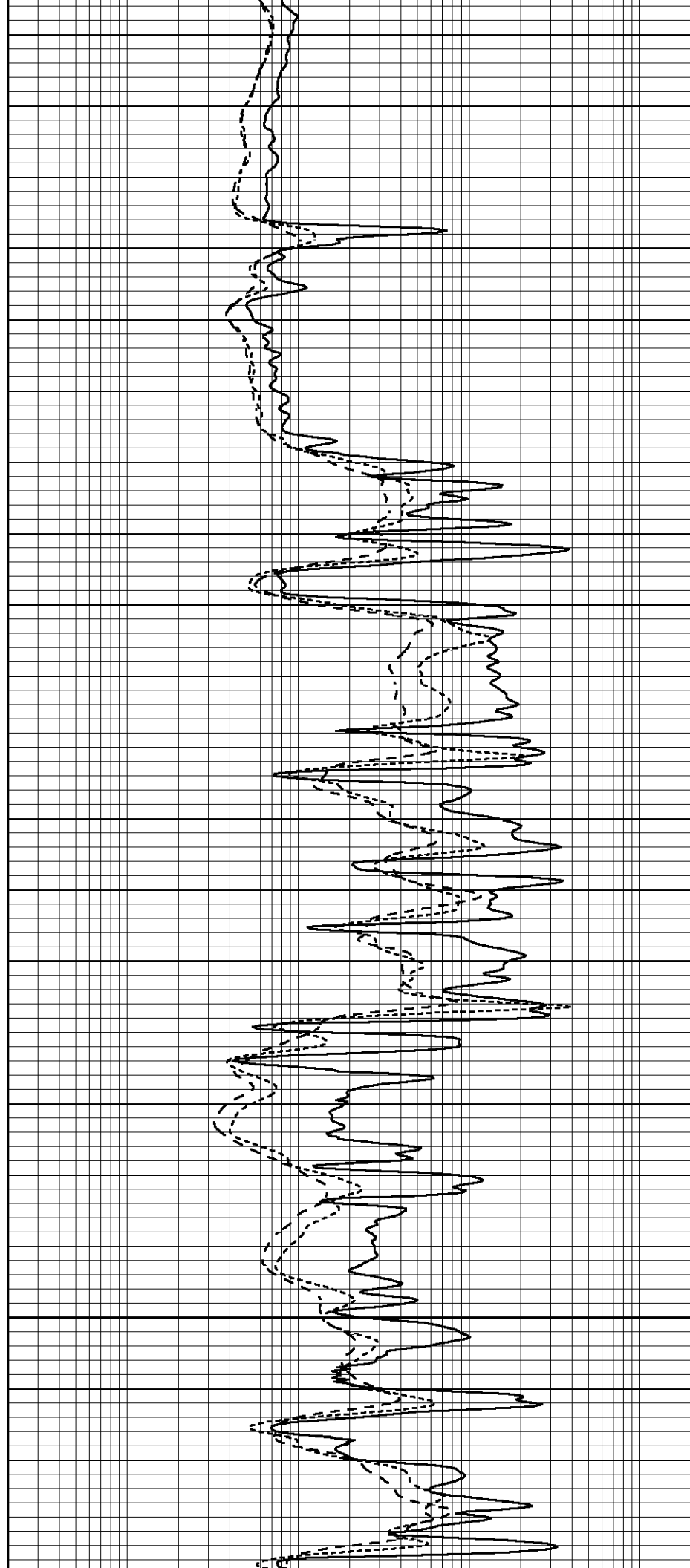


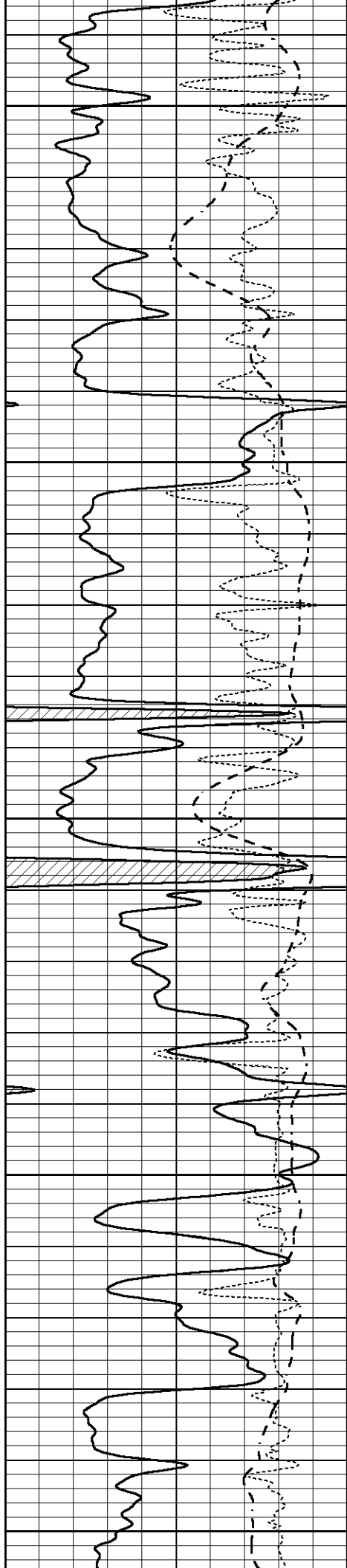
3800

3850

3900

3950





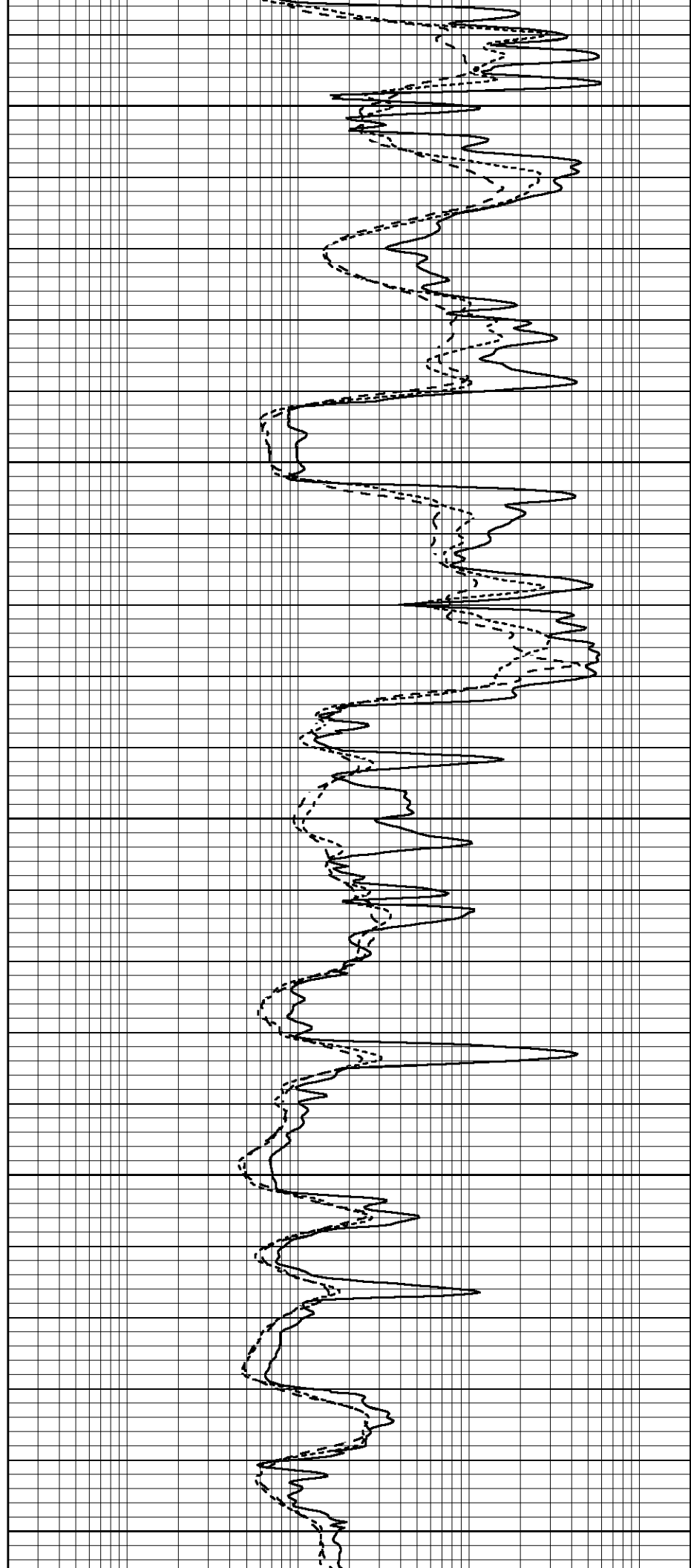
4000

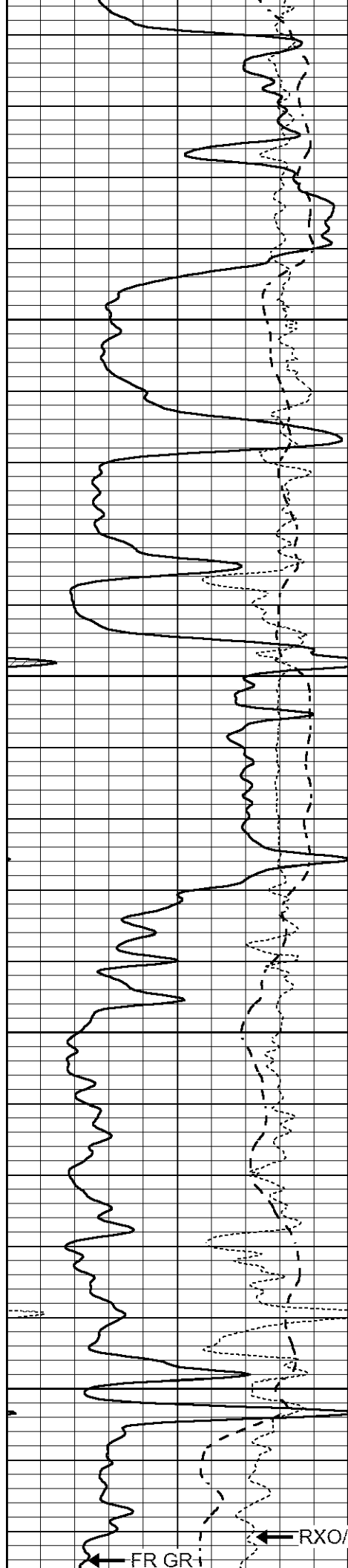
4050

4100

4150

4200





4250

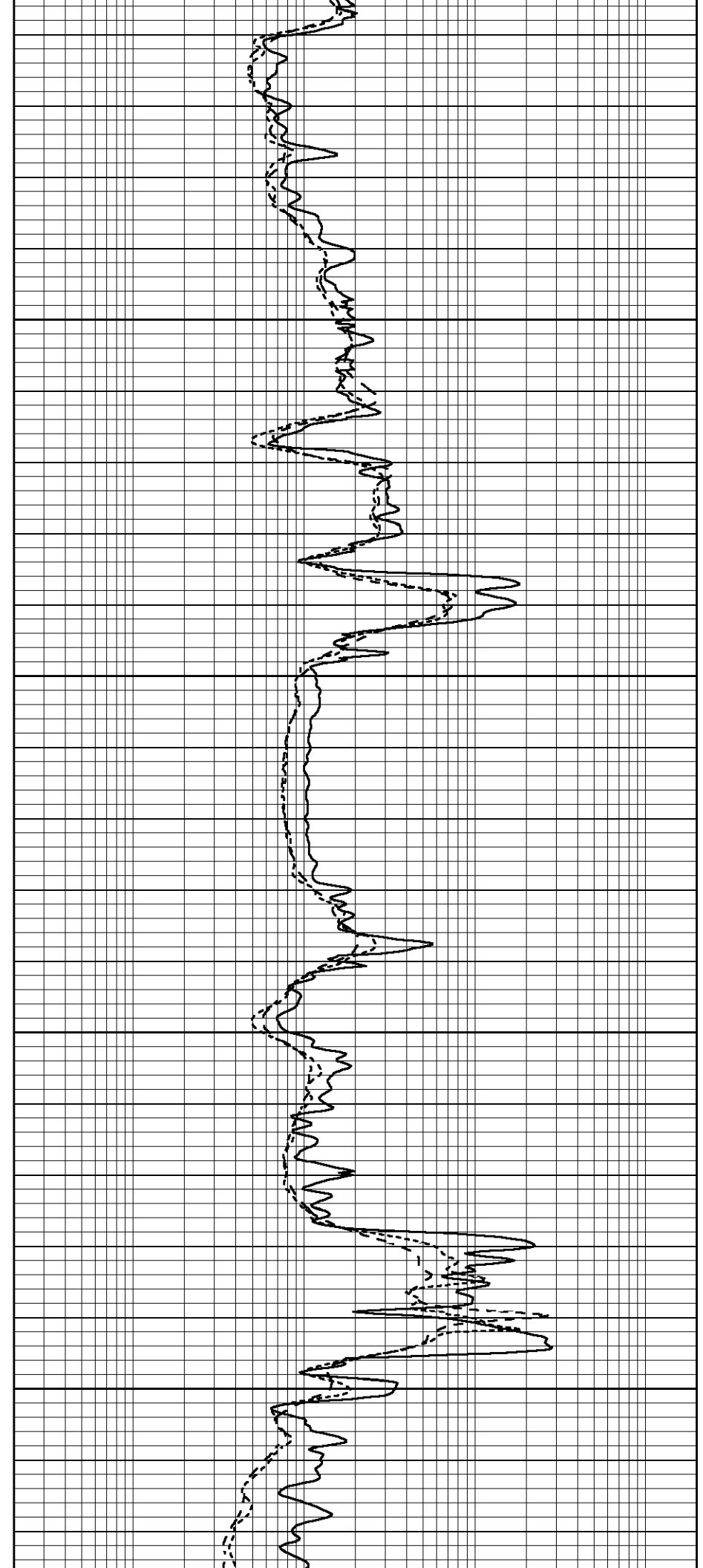
4300

4350

4400

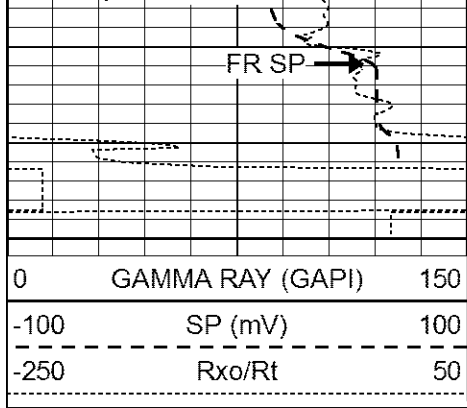
FR GR1

RXO/RT



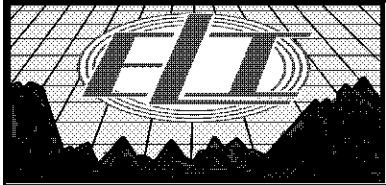
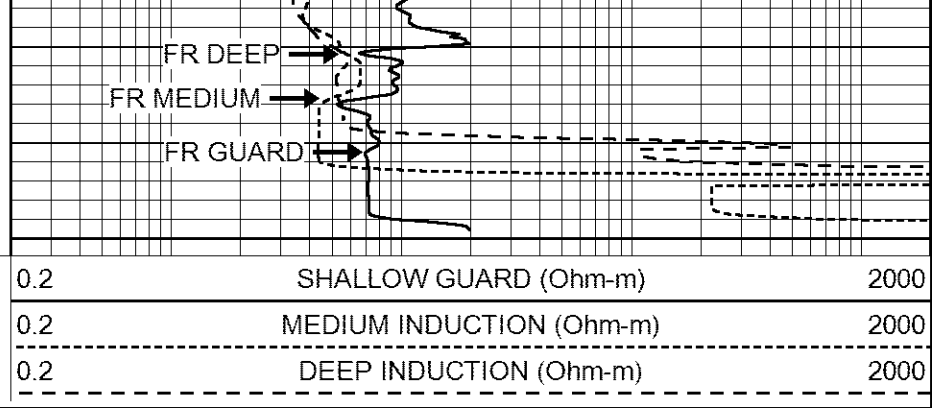
FR GR1

RXO/RT



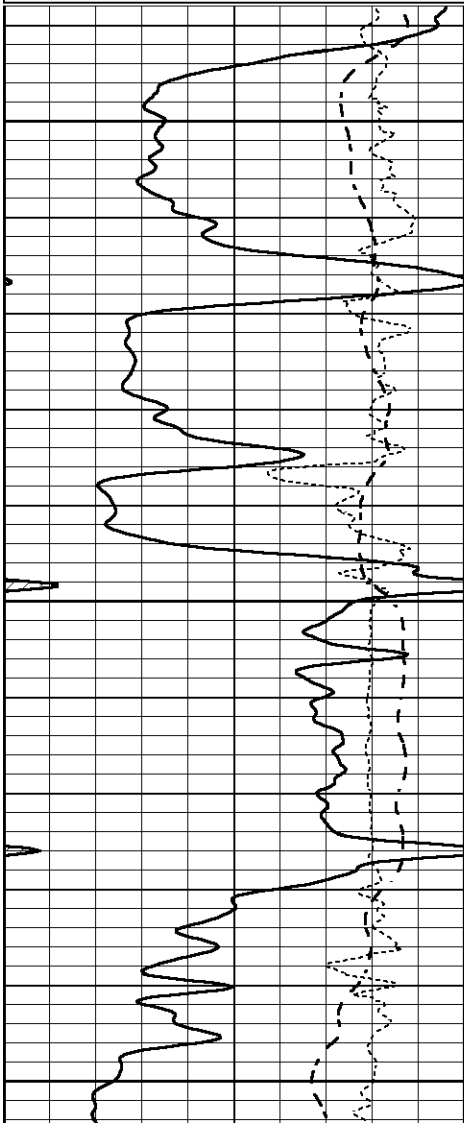
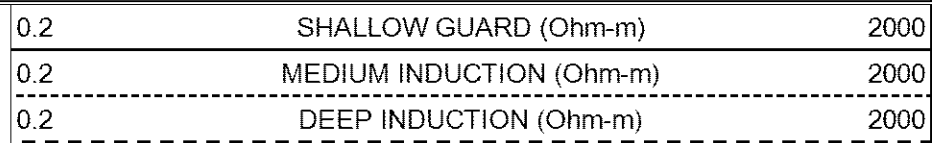
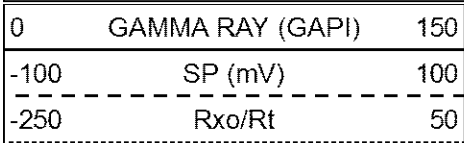
LTD 4443

4450



REPEAT SECTION

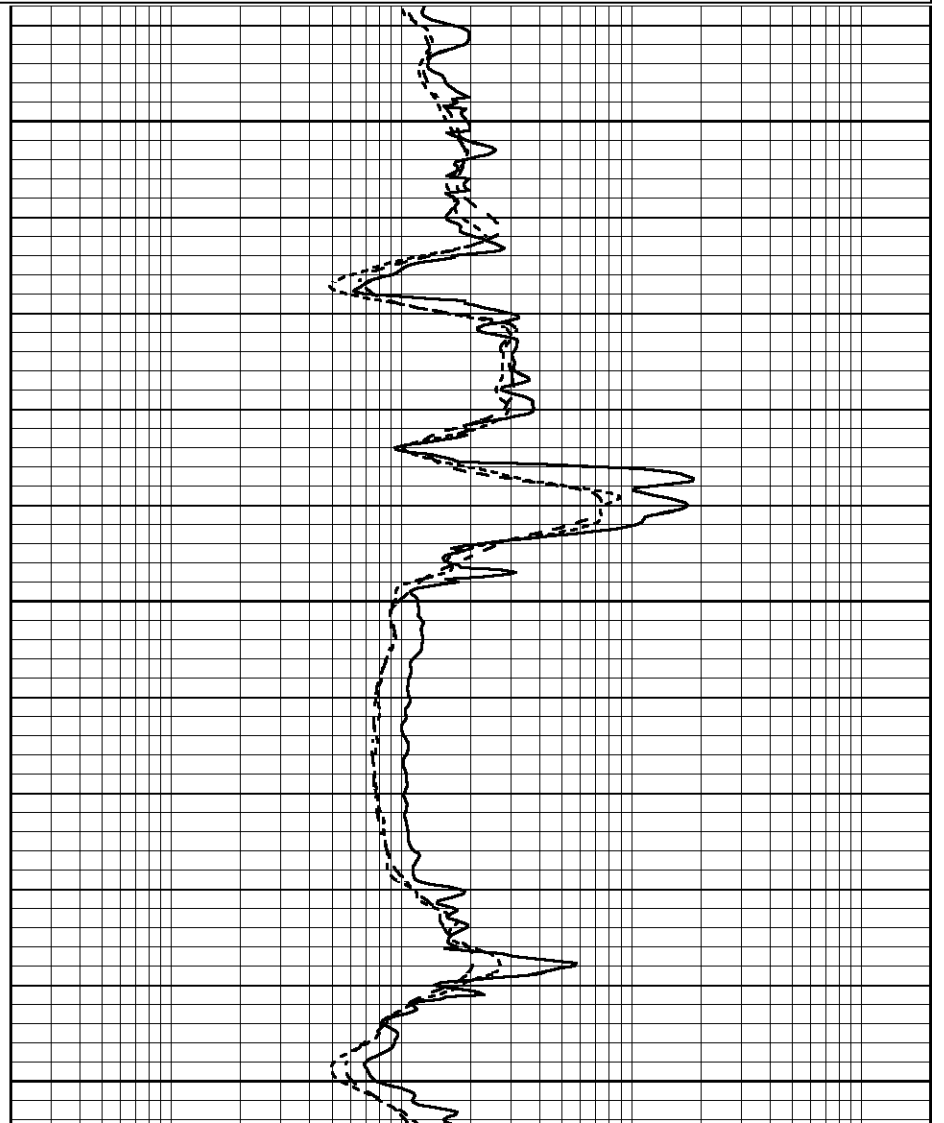
Database File 7706pe.db
 Dataset Pathname pass3RR
 Presentation Format _dil
 Dataset Creation Sat Jul 29 03:29:10 2023
 Charted by Depth in Feet scaled 1:240

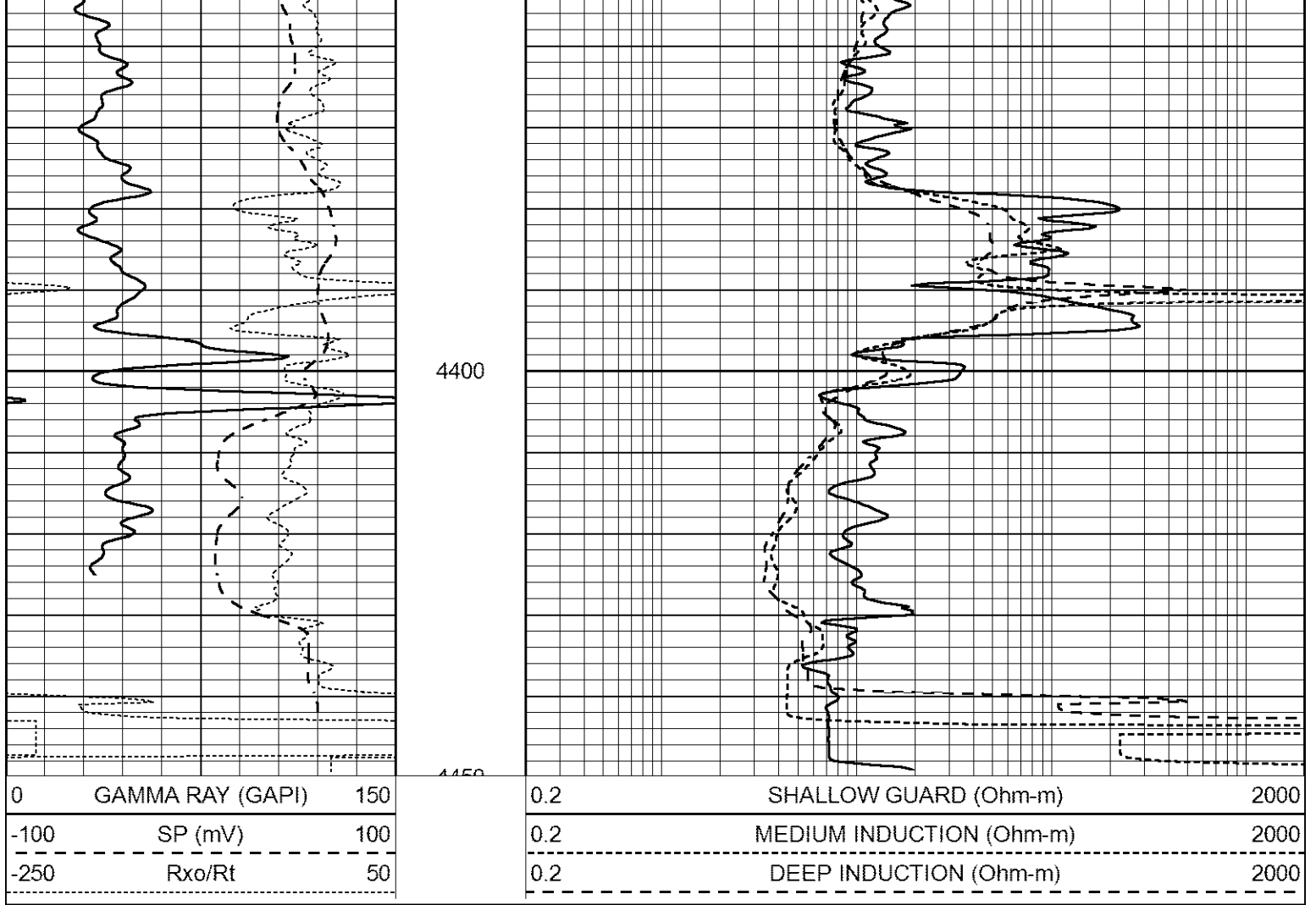


4250

4300

4350





Calibration Report

Database File 7706pe.db
 Dataset Pathname pass4M
 Dataset Creation Sat Jul 29 03:12:13 2023

Dual Induction Calibration Report

Serial-Model: FW1410-55-Probe
 Surface Cal Performed: Thu Jun 15 08:08:21 2023
 Downhole Cal Performed: Tue Feb 19 11:44:24 2019
 After Survey Verification Performed: Tue Feb 19 11:44:27 2019

Surface Calibration

Loop:	Readings			References			Results	
	Air	Loop	V	Air	Loop	mmho/m	m	b
Deep	0.011	0.656	V	1.000	400.000	mmho/m	565.000	-7.000
Medium	-0.000	0.731	V	1.000	464.000	mmho/m	530.000	-18.000
Internal:	Zero	Cal		Zero	Cal		m	b
Deep	0.007	0.649	V	0.000	400.000	mmho/m	623.784	-4.595
Medium	0.004	0.743	V	0.000	464.000	mmho/m	627.284	-2.251

Downhole Calibration

	Readings			References			Results	
	Zero	Cal	mmho/m	Zero	Cal	mmho/m	m'	b'
Deep	-0.824	395.917	mmho/m	-0.976	397.550	mmho/m	1.004	-0.149
Medium	3.565	471.327	mmho/m	3.468	471.590	mmho/m	1.001	-0.099

Medium	0.000	7.503	V	0.100	1500.000	Ohm-m	1.000	0.000
LL3		0.001	V		20.000	Ohm-m		
		-7.481	V		3745.000	mmho-m		

After Survey Verification								
	Readings			Targets			Results	
	Zero	Cal		Zero	Cal		m'	b'
Deep	0.000	0.000	mmho/m	-0.824	395.917	mmho/m	1.000	0.000
Medium	0.000	0.000	mmho/m	3.565	471.327	mmho/m	1.000	0.000
LL3		0.000	Ohm-m		1500.000	Ohm-m		
		0.000	Ohm-m		20.000	Ohm-m		
		0.000	mmho-m		3745.000	mmho-m		

Gamma Ray Calibration Report

Serial Number:	7
Tool Model:	Probe1
Performed:	Mon Jul 17 10:16:28 2023
Calibrator Value:	1.0 GAPI
Background Reading:	0.0 cps
Calibrator Reading:	1.0 cps
Sensitivity:	0.2800 GAPI/cps