



MICRO LOG

Company THOMAS GARNER, INC.
 Well RIPCORD #1-14
 Field MOORE SOUTHWEST
 County PRATT State KANSAS

Location: API #: 15-151-22569-0000
 1480' FNL & 2156' FWL
 NW - NE - SE - NW
 SEC 14 TWP 26S RGE 14W
 Permanent Datum GROUND LEVEL Elevation 1977
 Log Measured From KELLY BUSHING 11' A.G.L.
 Drilling Measured From KELLY BUSHING
 Other Services
 CDL/CNL/PE
 DIL/SON
 Elevation
 K.B. 1988
 D.F. 1986
 G.L. 1977

Date	7/29/23
Run Number	TWO
Depth Driller	4442
Depth Logger	4443
Bottom Logged Interval	4427
Top Log Interval	1900
Casing Driller	8 5/8 @ 433
Casing Logger	433
Bit Size	7 7/8
Type Fluid in Hole	CHEMICAL MUD
Density / Viscosity	9.3/73
PH / Fluid Loss	11.0/8.8
Source of Sample	FLOWLINE
Rm @ Meas. Temp	.600 @ 82F
Rmt @ Meas. Temp	.450 @ 82F
Rmc @ Meas. Temp	.720 @ 82F
Source of Rmf / Rmc	MEASUREMENT
Rm @ BHT	.410 @ 120F
Time Circulation Stopped	3.5 HOURS
Time Logger on Bottom	2:30 A.M.
Maximum Recorded Temperature	120F
Equipment Number	8916
Location	HAYS, KANSAS
Recorded By	COLE ROBBERN
Witnessed By	KEITH REAVIS

<<< Fold Here >>>

All interpretations are opinions based on inferences from electrical or other measurements and we cannot and do not guarantee the accuracy or correctness of any interpretation, and we shall not, except in the case of gross or willful negligence on our part, be liable or responsible for any loss, costs, damages, or expenses incurred or sustained by anyone resulting from any interpretation made by any of our officers, agents or employees. These interpretations are also subject to our general terms and conditions set out in our current Price Schedule.

Comments

THANK YOU FOR USING ELI WIRELINE SERVICES, HAYS, KS. (785) 628-6395

DIRECTIONS:

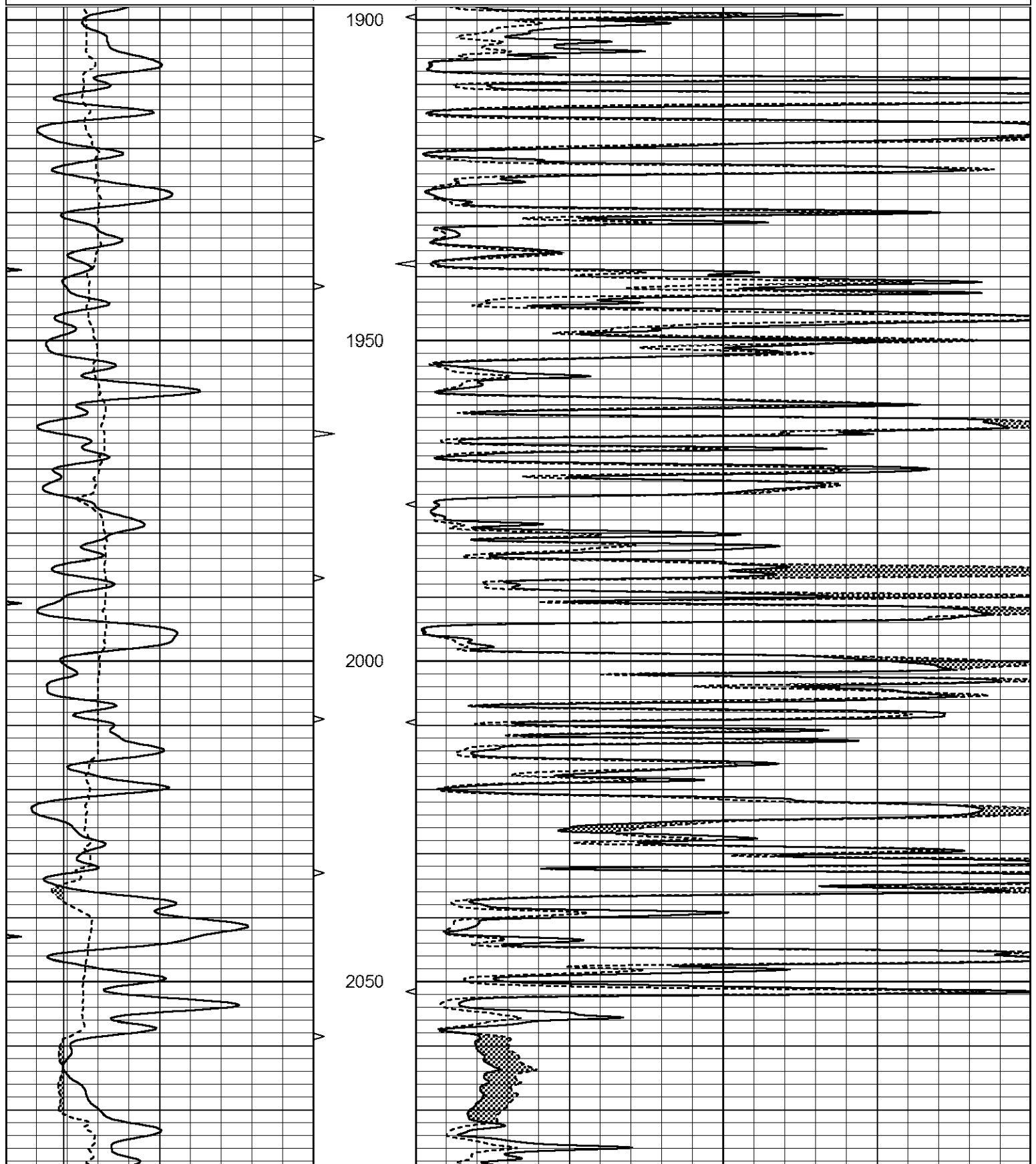
FROM HIGHWAY 281/BYERS BLACK TOP GO 5 MILES WEST TO NORTHWEST 50TH AVENUE,
 1/2 MILE NORTH, EAST INTO

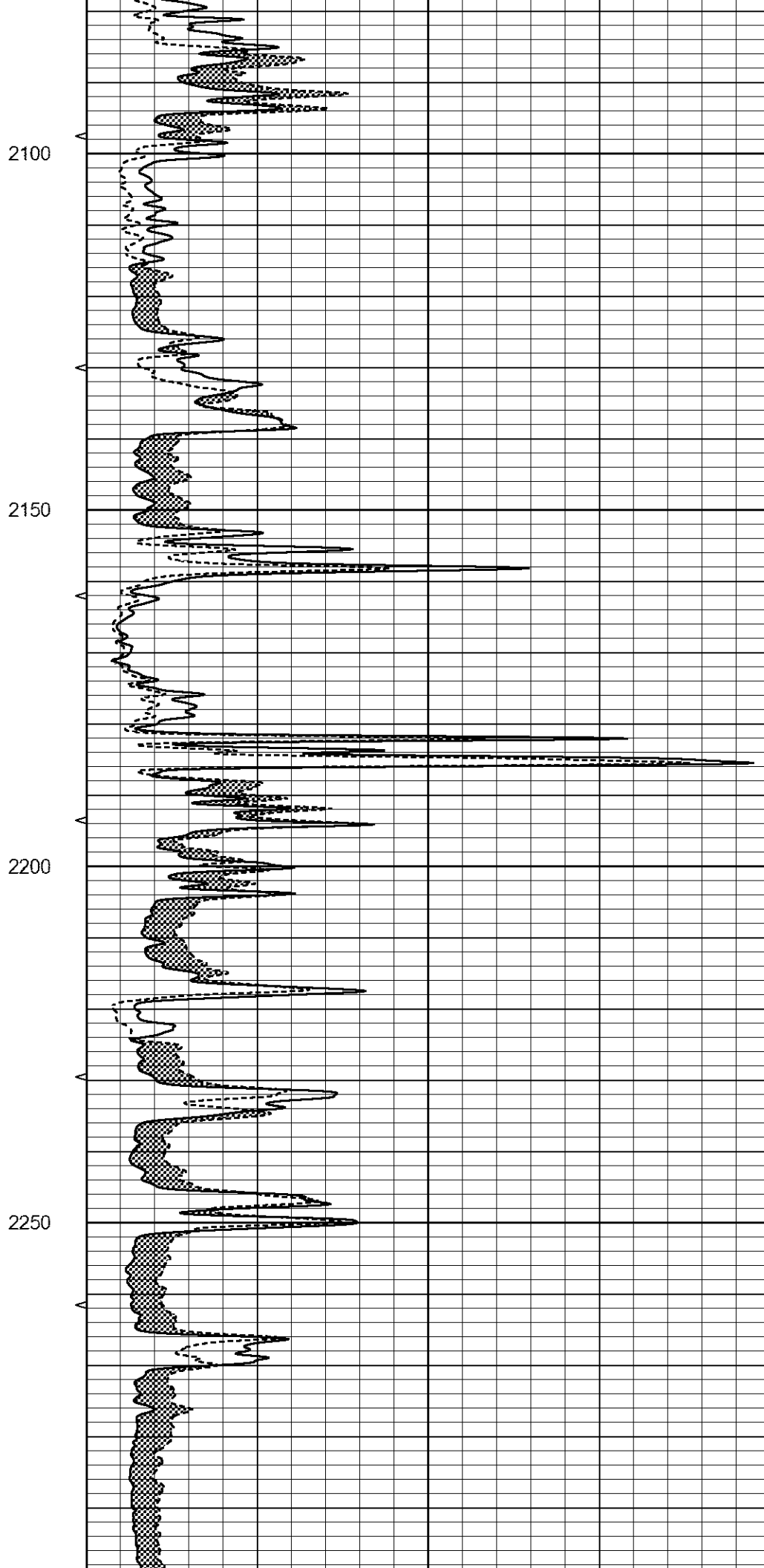
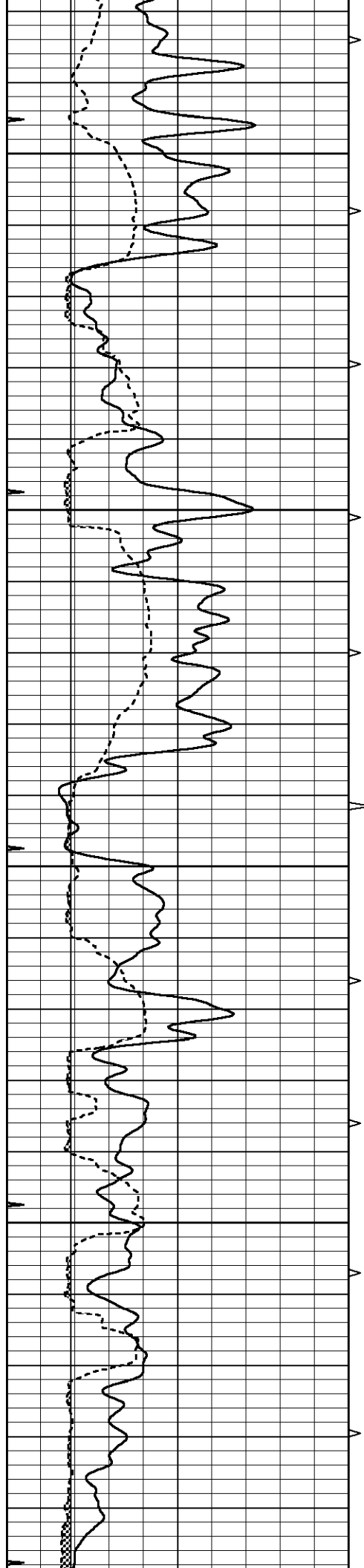


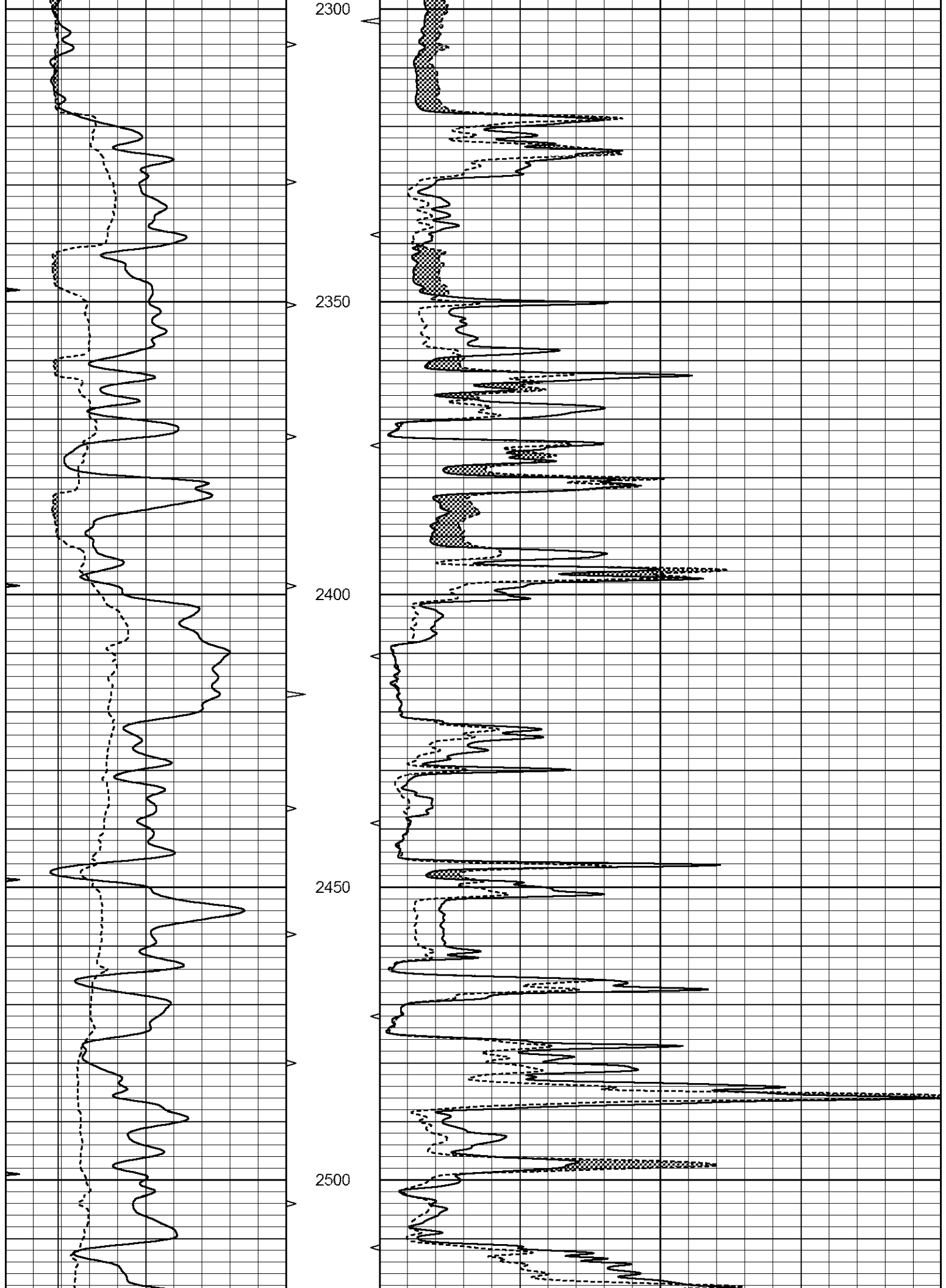
MAIN SECTION

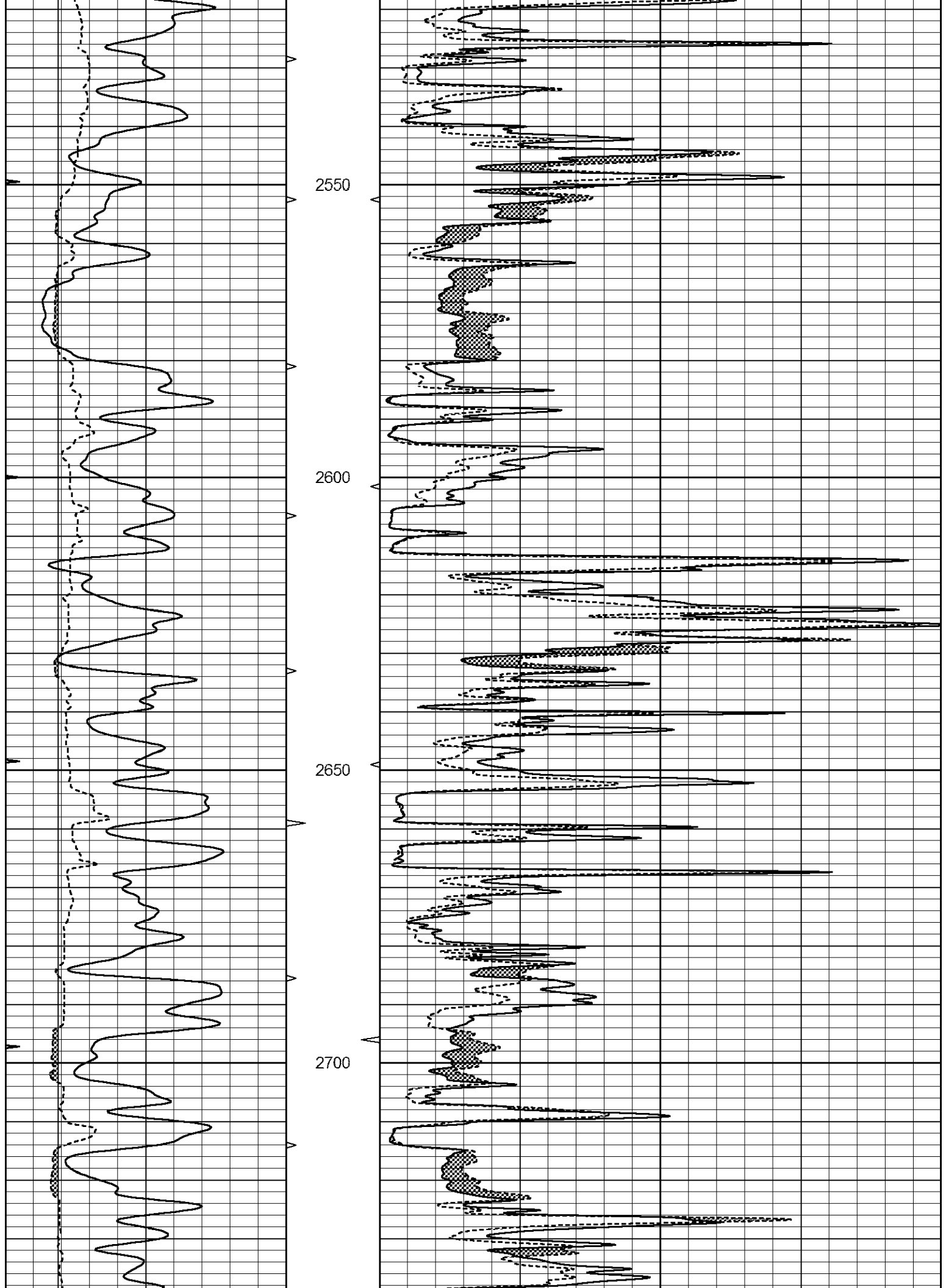
Database File 7706pe.db
 Dataset Pathname pass7MC
 Presentation Format _micro
 Dataset Creation Sat Jul 29 04:16:23 2023
 Charted by Depth in Feet scaled 1:240

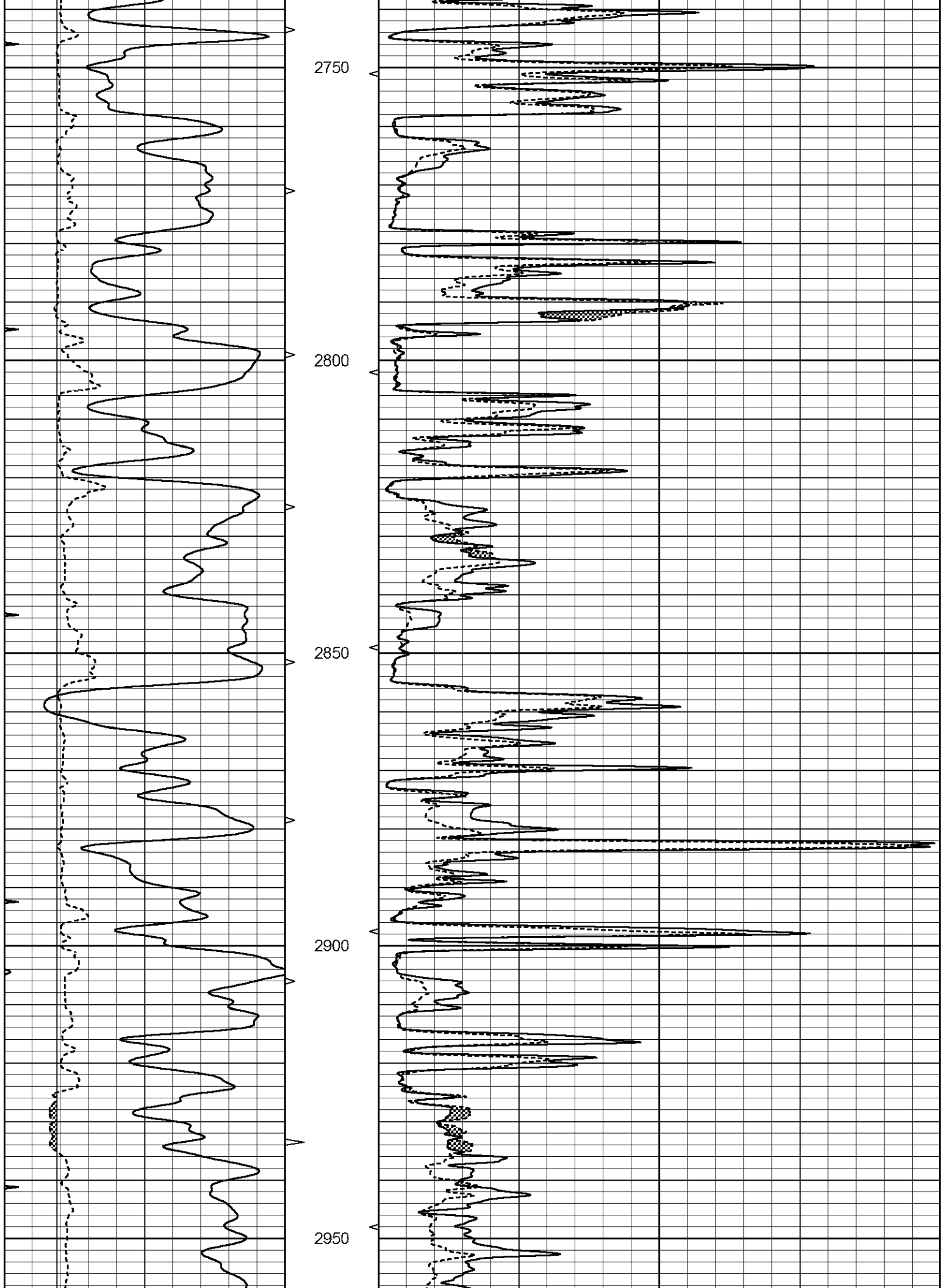
0	GAMMA RAY (GAPI)	150	ABHV	0	MEL1.5 (Ohm-m)	40
6	CALIPER (in)	16	10 (ft3)	0	MEL2.0 (Ohm-m)	40
0	MINMK	20	TBHV			
			0 (ft3)	10		

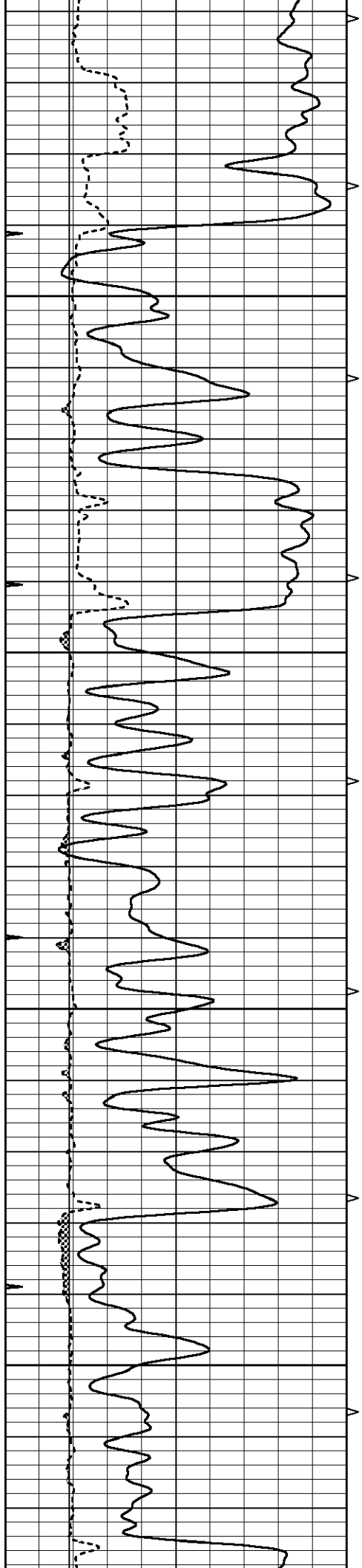










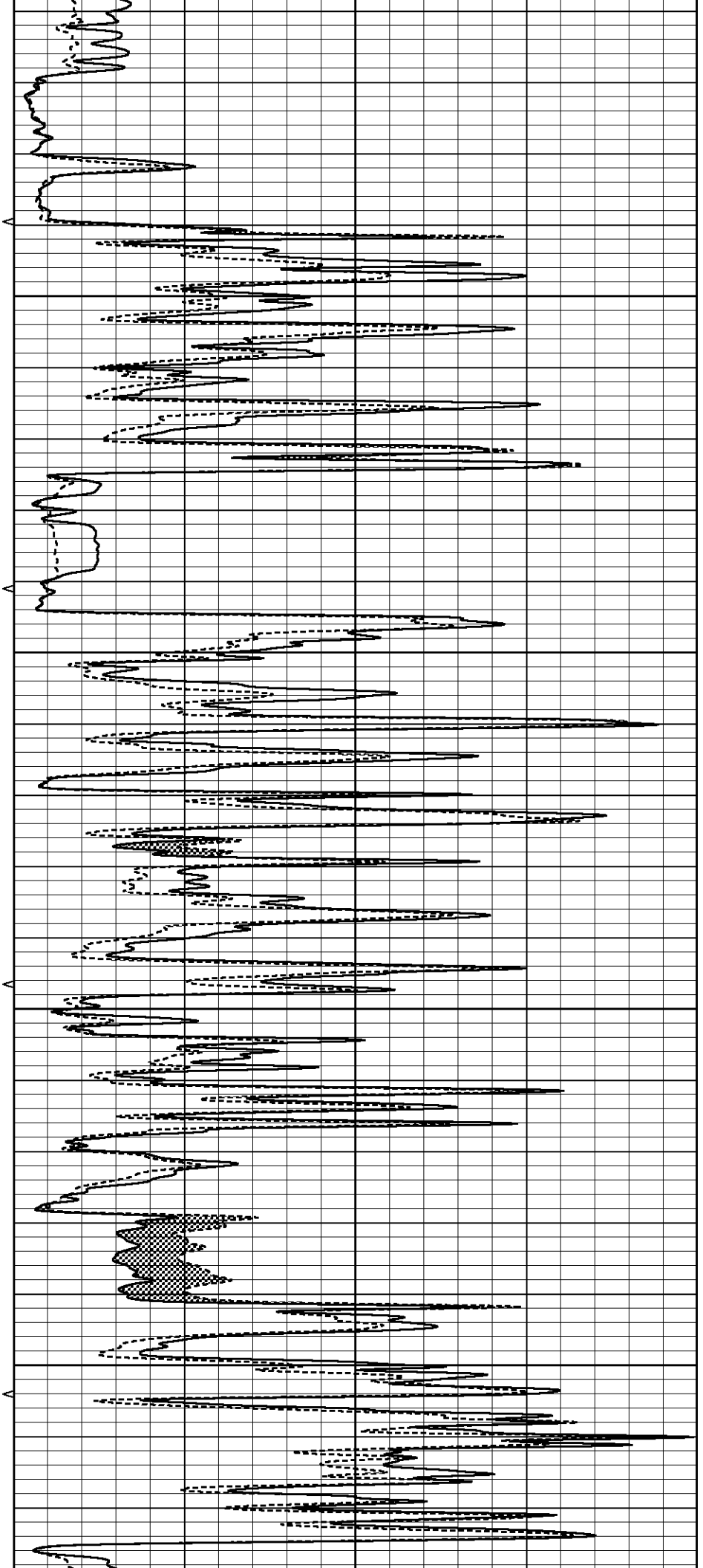


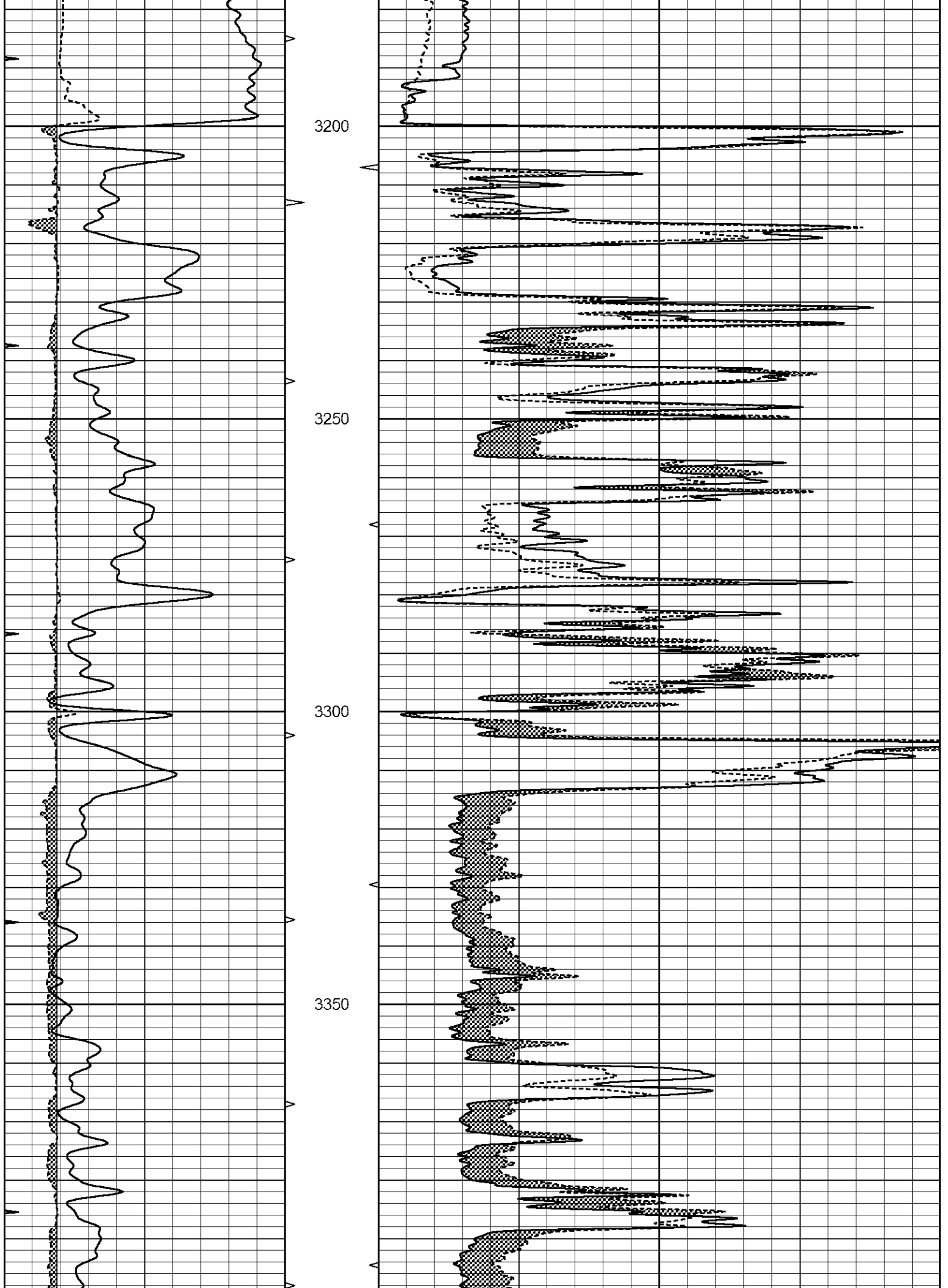
3000

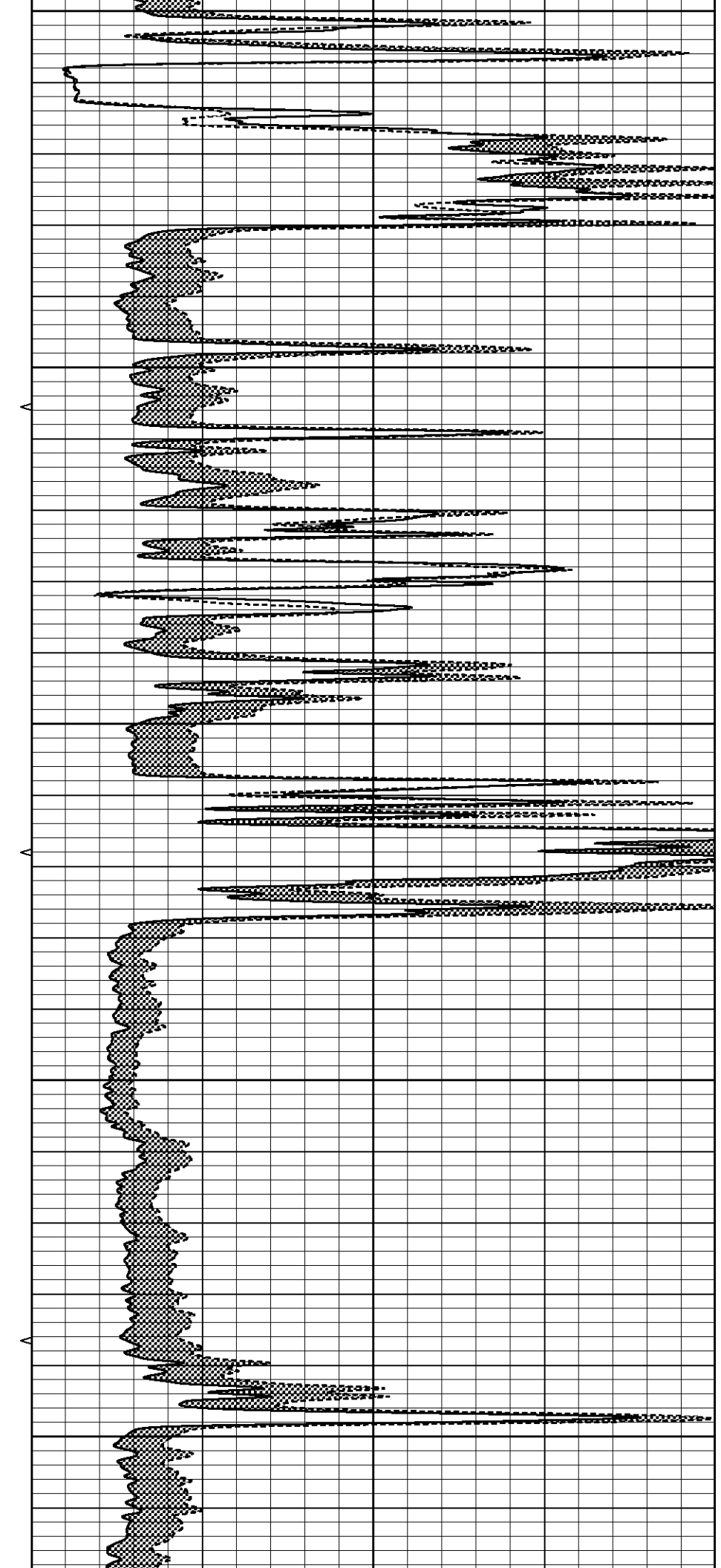
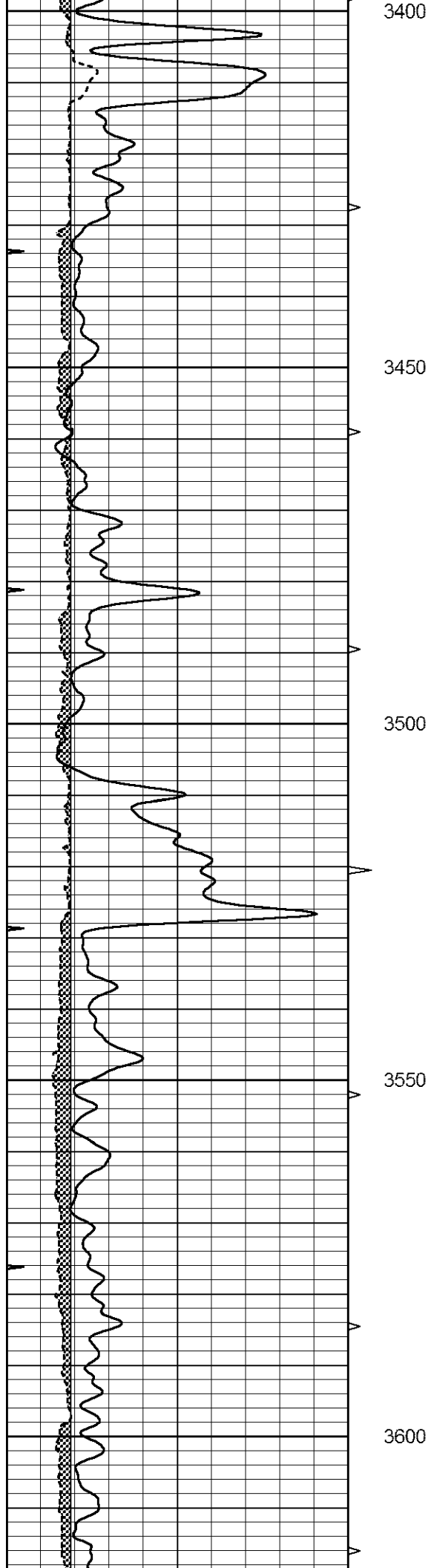
3050

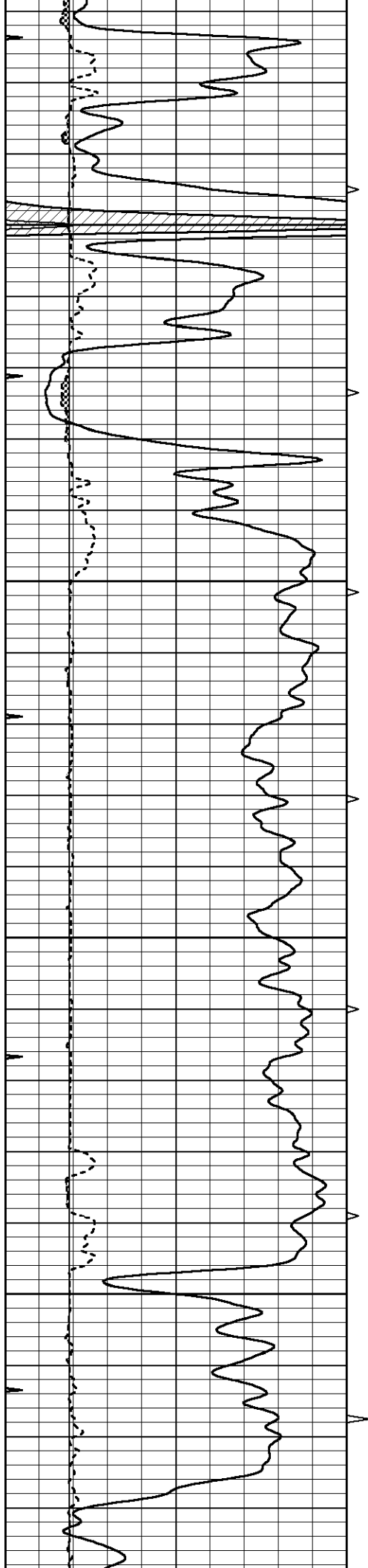
3100

3150







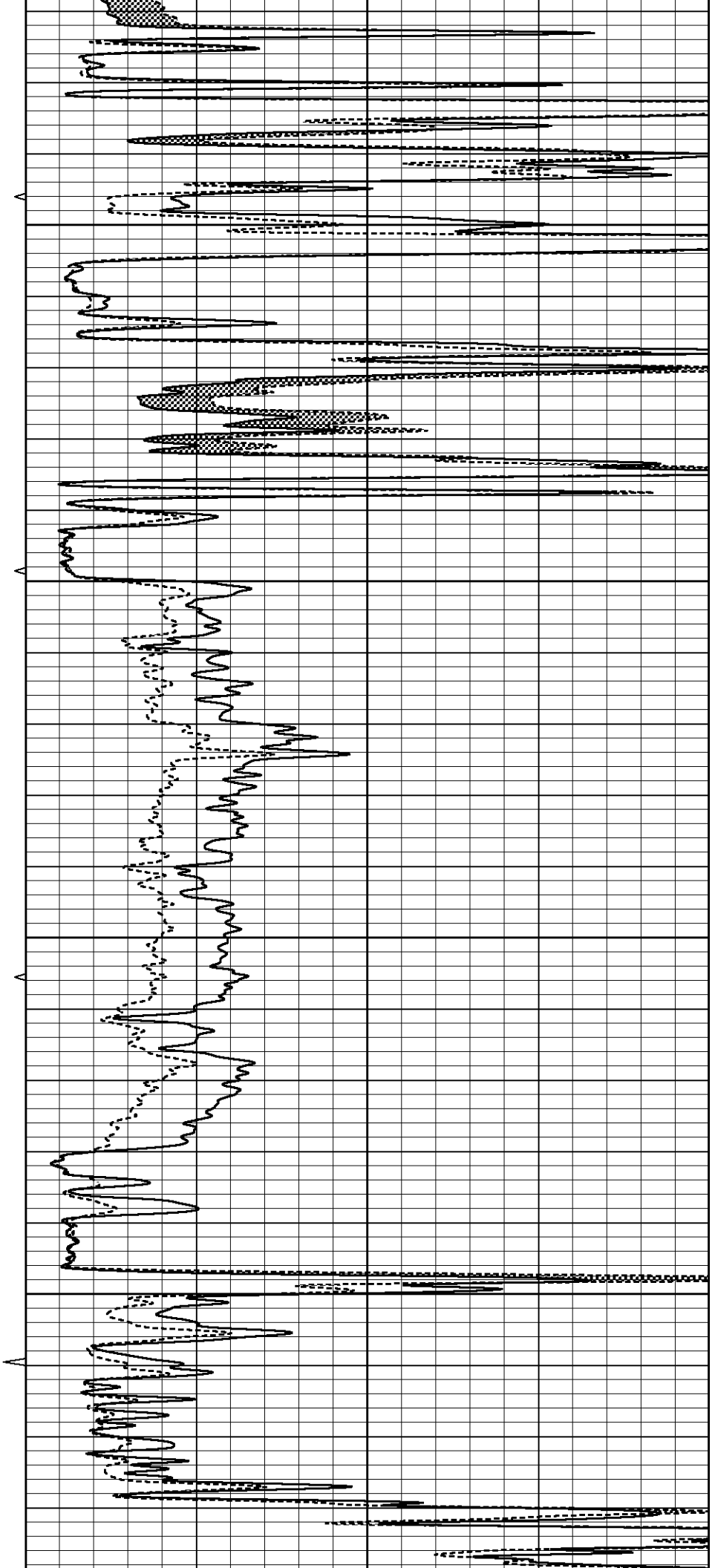


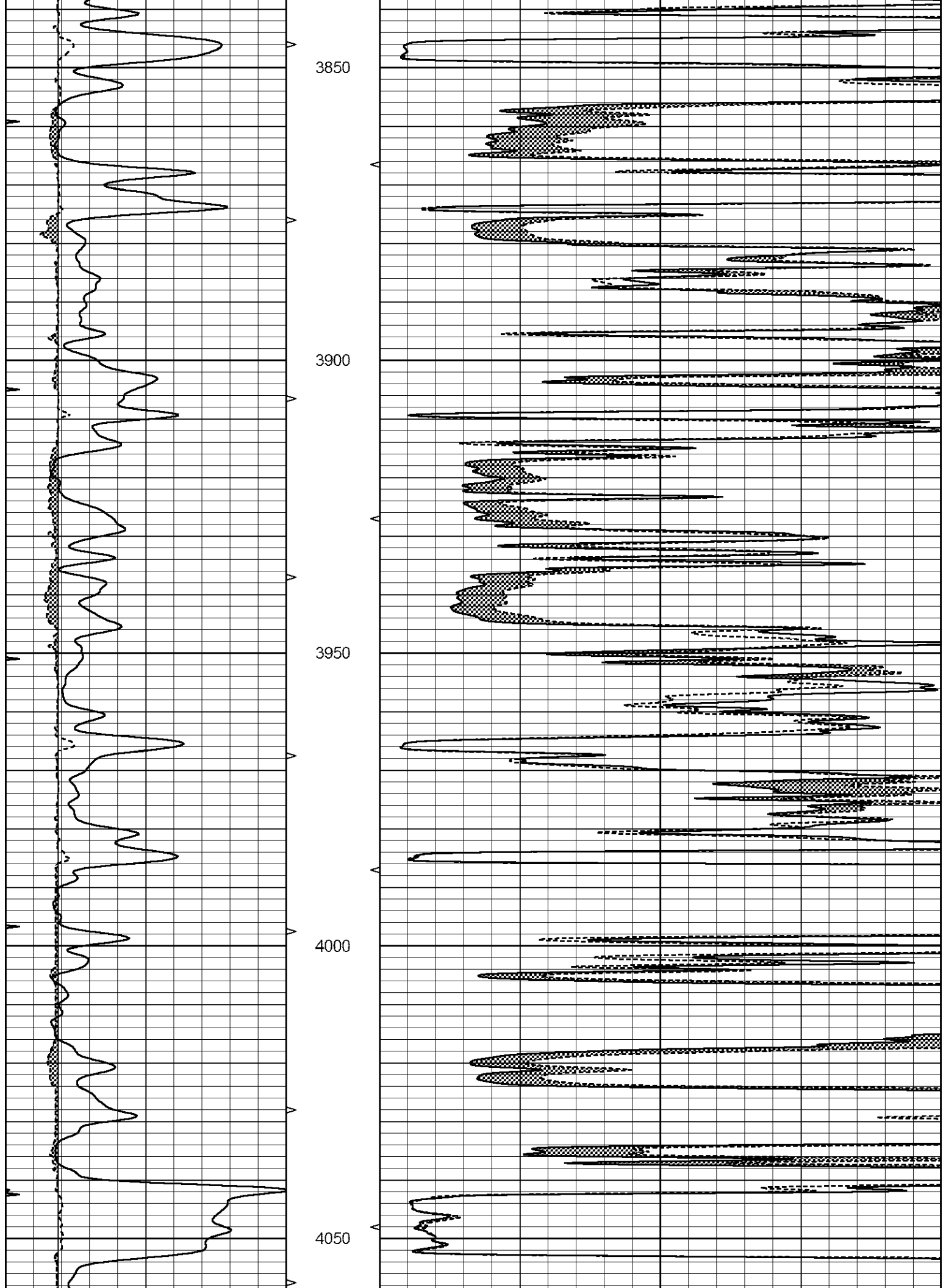
3650

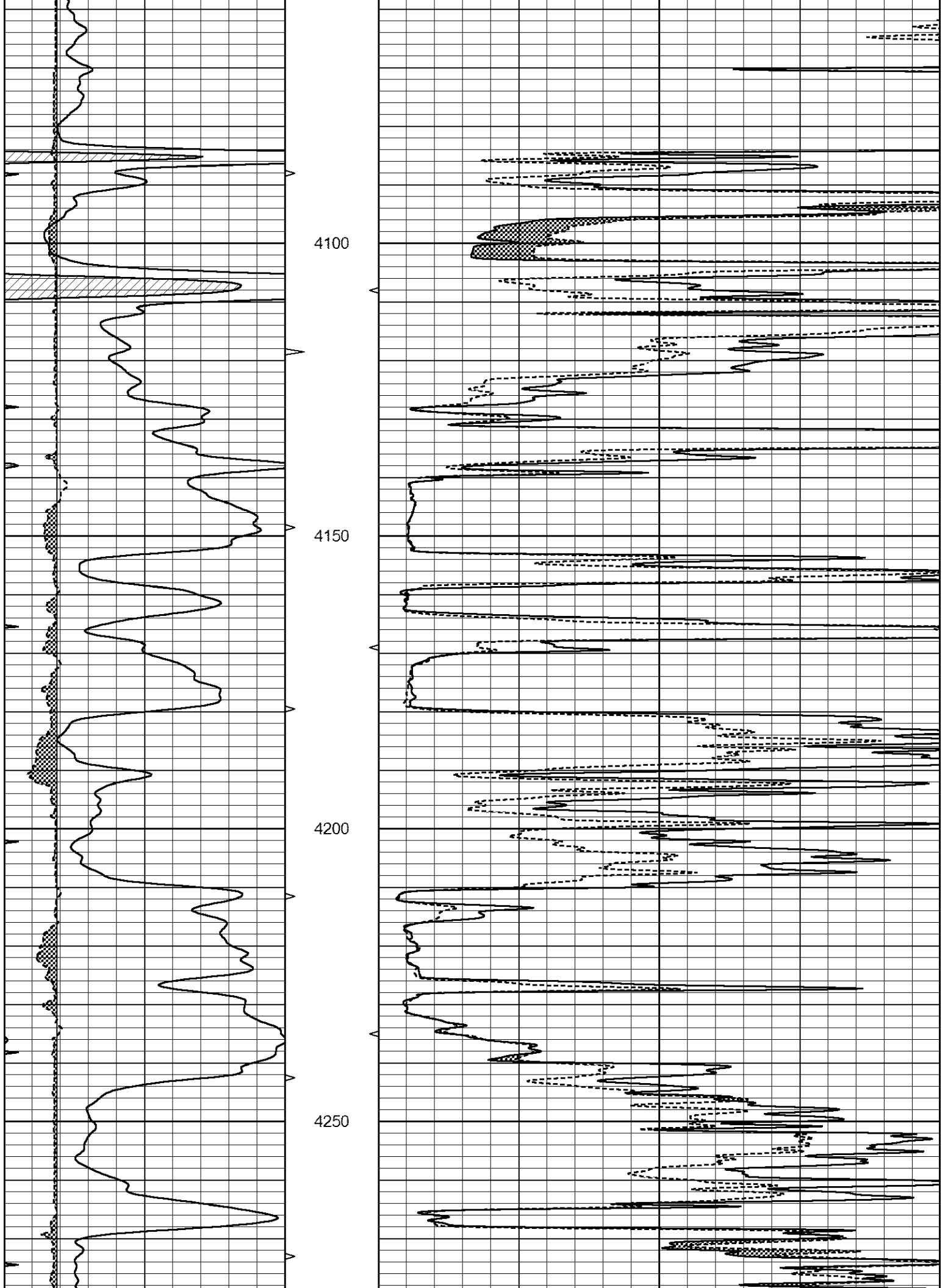
3700

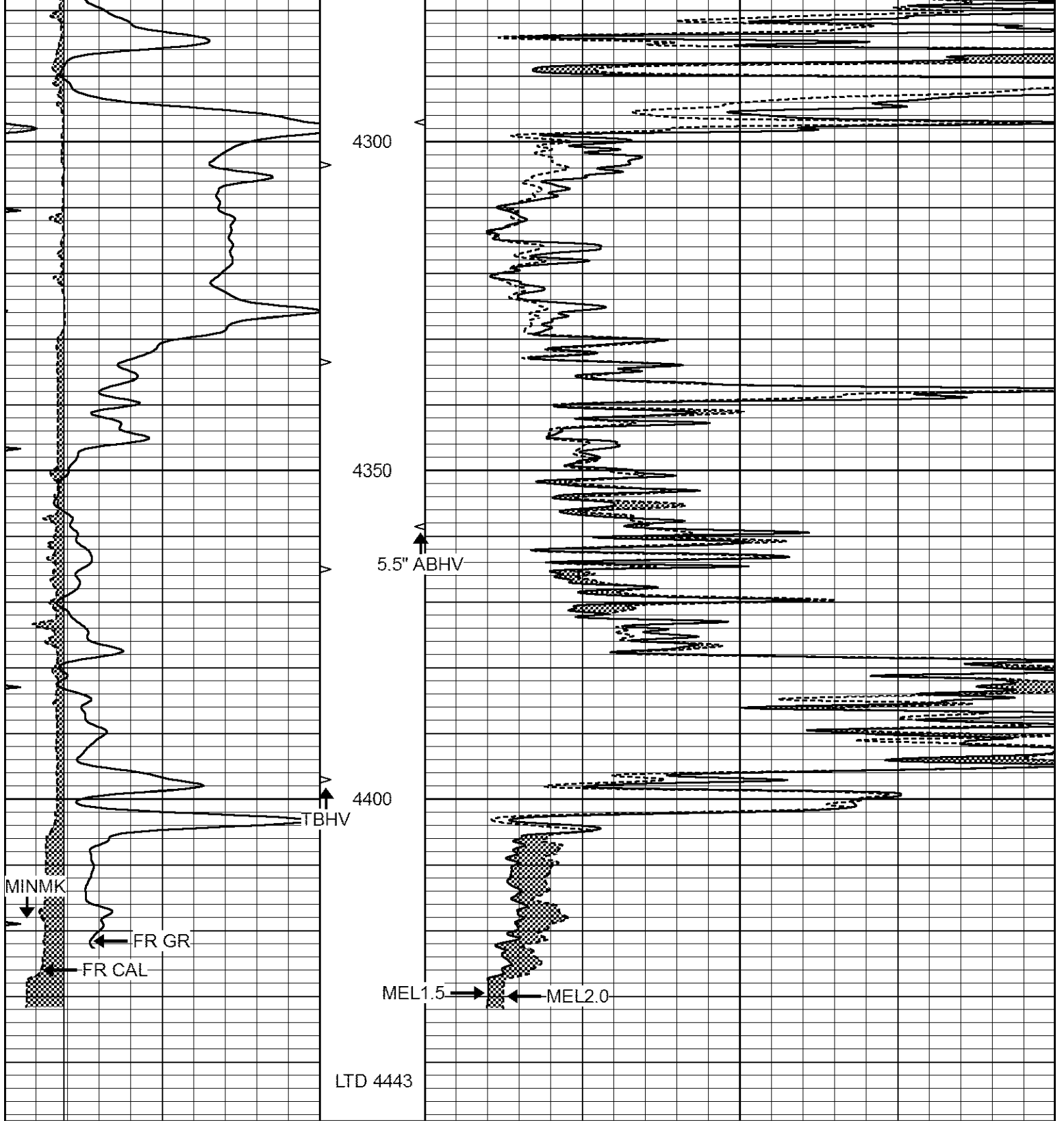
3750

3800









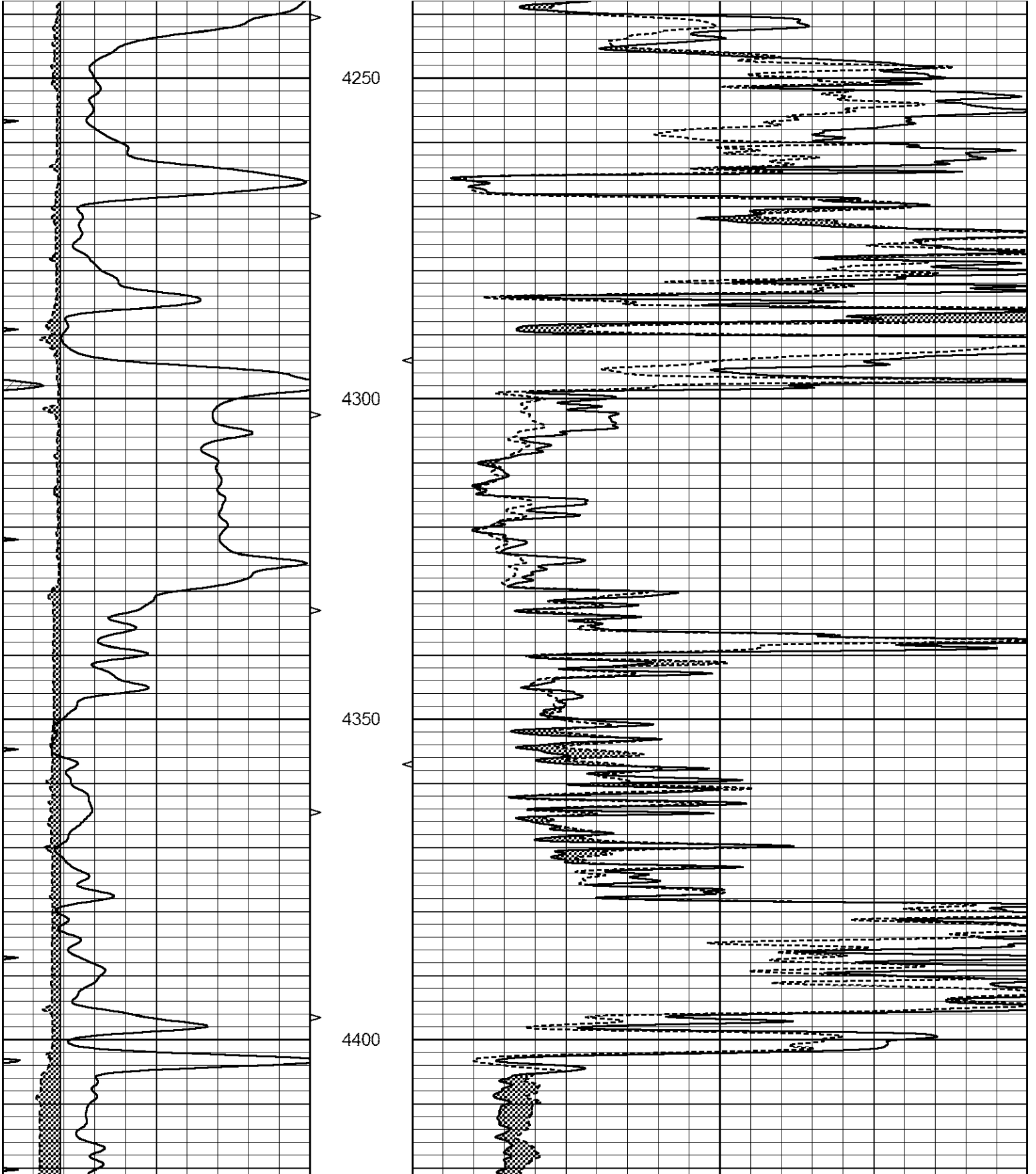
0	GAMMA RAY (GAPI)	150	ABHV	0	MEL1.5 (Ohm-m)	40
6	CALIPER (in)	16	10 (ft3)	0 0	MEL2.0 (Ohm-m)	40
0	MINMK	20	TBHV			
			0 (ft3)	10		



REPEAT SECTION

Dataset Pathname: pass6.1
 Presentation Format: _micro
 Dataset Creation: Sat Jul 29 04:20:51 2023
 Charted by: Depth in Feet scaled 1:240

0	GAMMA RAY (GAPI)	150	ABHV	0	MEL1.5 (Ohm-m)	40
6	CALIPER (in)	16	10 (ft3)	0	MEL2.0 (Ohm-m)	40
0	MINMK	20	TBHV			
			0 (ft3)	10		



0	GAMMA RAY (GAPI)	150	ABHV	0	MEL1.5 (Ohm-m)	40
6	CALIPER (in)	16	10 (ft3) 0	0	MEL2.0 (Ohm-m)	40
0	MINMK	20	TBHV			
			0 (ft3) 10			

Calibration Report

Database File 7706pe.db
 Dataset Pathname pass7MC
 Dataset Creation Sat Jul 29 04:16:23 2023

MICRO_USR Calibration Report

Serial Number: 070911
 Tool Model: ProbeL
 Performed: Tue Jun 27 10:27:40 2023

Caliper Calibration: Gain=4.500 Offset=0.160

	Low Cal	High Cal
References	8.000	14.000
Readings	1.451	3.049

1.5" Calibration: Gain=30.000 Offset=-0.500

	Low Cal	High Cal
References	0.000	20.000
Readings	0.004	0.843

2" Calibration: Gain=36.000 Offset=-0.500

	Low Cal	High Cal
References	0.000	20.000
Readings	0.021	0.810

Microlog Calibration Report

Serial-Model: 070911-ProbeL
 Performed: Sat May 14 04:48:25 2022

	Readings			References			Results	
	Zero	Cal		Zero	Cal		m	b
Normal	0.0002	0.4836	V	0.0000	10.0000	Ohm-m	20.6908	-0.0051
Inverse	0.0018	0.6297	V	0.0000	10.0000	Ohm-m	15.9263	-0.0282
Caliper	0.0000	1.0000	V	0.0000	1.0000	in	1.0000	0.0000

Gamma Ray Calibration Report

Serial Number: 070558
 Tool Model: Probe1
 Performed: Mon Jul 17 10:21:25 2023

Calibrator Value: 1.0 GAPI

Background Reading: 0.0 cps

Calibrator Reading: 1.0 cps

Sensitivity: 0.2900 GAPI/cps