



MIDWEST WIRELINE

**DUAL COMPENSATED
POROSITY**

Company RAMA Operating Company, Inc.
Well Bayer #6-29
Field Chase-Silica
County Rice
State Kansas

Company RAMA Operating Company, Inc.
Well Bayer #6-29
Field Chase-Silica
County Rice State Kansas

Location: API #: 15-159-22891-00-00
SE SW NW SW
1381 FSL & 335 FWL
SEC 29 TWP 19S RGE 10W
Permanent Datum Ground Level Elevation 1785
Log Measured From Kelly Bushing
Drilling Measured From Kelly Bushing
Other Services
DIL
MEL/BHCS
K.B. 1796
D.F.
G.L. 1785

| | | | | | | | |
|------------------------|-------------|------|-----|-------|------|------|-----|
| Date | 8/7/2023 | | | | | | |
| Run Number | One | | | | | | |
| Type Log | CNL/CDL | | | | | | |
| Depth Driller | 3380 | | | | | | |
| Depth Logger | 3380 | | | | | | |
| Bottom Logged Interval | 3359 | | | | | | |
| Top Logged Interval | 1300 | | | | | | |
| Type Fluid In Hole | Chemical | | | | | | |
| Salinity, PPM CL | 4000 | | | | | | |
| Density | 9.3 | | | | | | |
| Level | Full | | | | | | |
| Max. Rec. Temp. F | 110 | | | | | | |
| Operating Rig Time | 4 Hours | | | | | | |
| Equipment -- Location | P-24 Hays | | | | | | |
| Recorded By | T. Martin | | | | | | |
| Witnessed By | Josh Austin | | | | | | |
| Borehole Record | | | | | | | |
| Run No. | Bit | From | To | Size | Wgt. | From | To |
| One | 12.25 | 00 | 348 | 8.625 | 23 | 00 | 348 |
| Two | 7.875 | 348 | TD | | | | |
| Casing Record | | | | | | | |

<<< Fold Here >>>

All interpretations are opinions based on inferences from electrical or other measurements and Midwest Wireline Services, LLC cannot and does not guarantee the accuracy or correctness of any interpretation, and Midwest Wireline Services, LLC will not be liable or responsible for any loss, costs, damages, or expenses incurred or sustained by anyone resulting from any interpretation made by any of our officers, agents or employees.

Comments

N/A DENOTES NOT AVAILABLE OR NON-APPLICABLE.

Ellinwood, KS, E to Silica(2nd Rd),
1.25 N, E into

Log Measured From: Kelly Bushing 11 Ft. Above Permanent Datum

THANK YOU FOR USING MIDWEST WIRELINE LLC
785-625-3858

| | | | |
|----------------------------|-----------|----------------------------------|--------------------|
| Your Midwest Wireline Crew | | This Log Record Was Witnessed By | |
| Engineer: T. Martin | Operator: | Primary Witness: Josh Austin | Secondary Witness: |
| Operator: | Operator: | Secondary Witness: | Secondary Witness: |
| Operator: | | Secondary Witness: | |

| Sensor | Offset (ft) | Schematic | Description | Length (ft) | O.D. (in) | Weight (lb) |
|--------------------|-------------------------|-----------|------------------|-------------|-----------|-------------|
| GR | 32.75 | | GR-M&W (105) | 3.00 | 3.50 | 50.00 |
| CNLSC CNSSC | 29.65 28.90 | | CNT-M&W (207) | 5.00 | 3.50 | 100.00 |
| LSD DCAL SSD | 20.60 20.58 20.10 | | CDL-M&W (307-11) | 8.50 | 4.00 | 250.00 |
| RLL3F RLL3 | 15.50 15.50 | | DIL-M&W (507) | 18.25 | 3.50 | 220.00 |
| CILD | 8.33 | | | | | |
| CILM | 4.50 | | | | | |
| SP | 0.20 | | | | | |

Dataset: rama_bayer #6-29.db: field/well/Stack/pass3.1
 Total length: 34.75 ft
 Total weight: 620.00 lb
 O.D.: 4.00 in

Log Variables

DatabaseC:\ProgramData\Warrior\Data\rama_bayer #6-29.db
 Dataset field/well/Stack/pass3.1/_vars_

Top - Bottom

| | | | | | | | |
|-----------------------|------------------------|----------------------|-----------------------|-----------------------|--------------------------|----------------------|-------------|
| BOREID in 7.875 | BOTTEMP degF 110 | CASEOD in 5.5 | CASETHCK in 0 | FLUIDDEN g/cc 1 | MATRXDEN g/cc 2.71 | NPORSEL Limestone | PERFS No |
| SNDERR mmho/m 2 | SNDERRM mmho/m 0 | SPSHIFT mV 580 | SRFTEMP degF 80 | SZCOR Off | TDEPTH ft 3380 | | |

Variable Description

BOREID : Borehole I.D.
 BOTTEMP : Bottom Hole Temperature
 CASEOD : Casing O.D.
 CASETHCK : Casing Thickness
 FLUIDDEN : Fluid Density
 MATRXDEN : Matrix Density
 NPORSEL : Neutron Porosity Curve Select

PERFS : Perforation Flag
 SNDERR : Deep Sonde Error Correction
 SNDERRM : Medium Sonde Error Correction
 SPSHIFT : S.P. Baseline Offset
 SRFTEMP : Surface Temperature
 SZCOR : CN Size Cor. ?
 TDEPTH : Total Depth

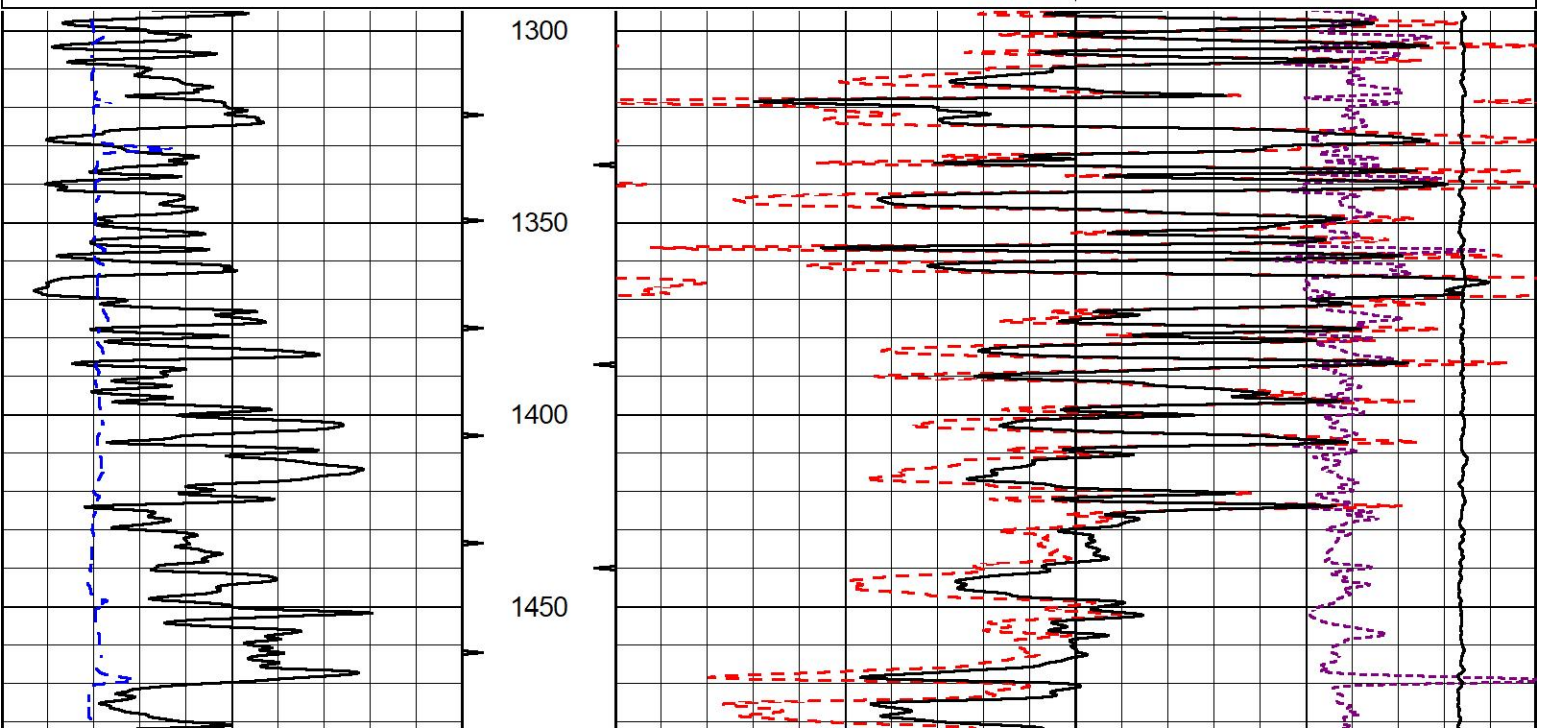


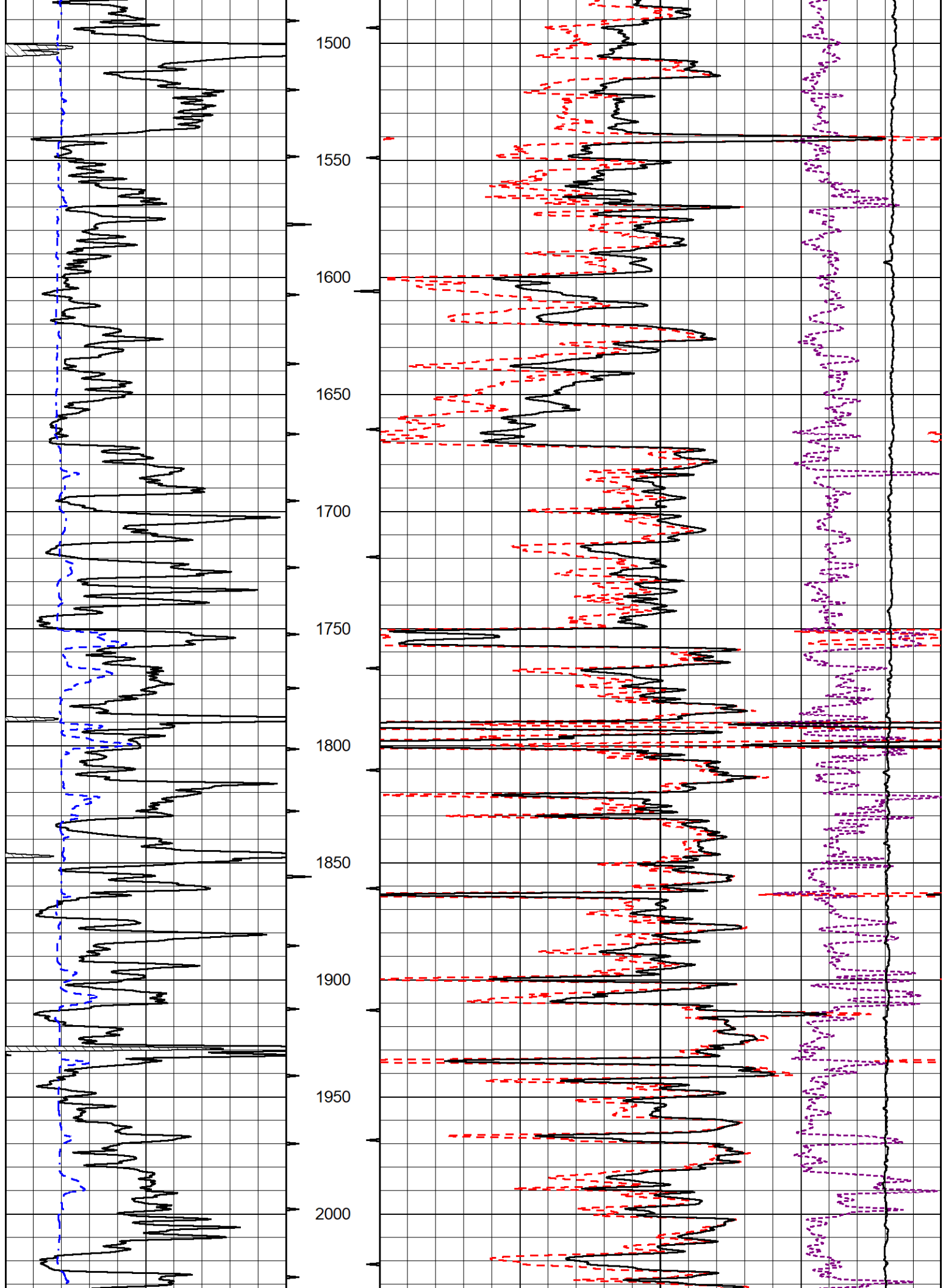
2" SCALE BULK DENSITY

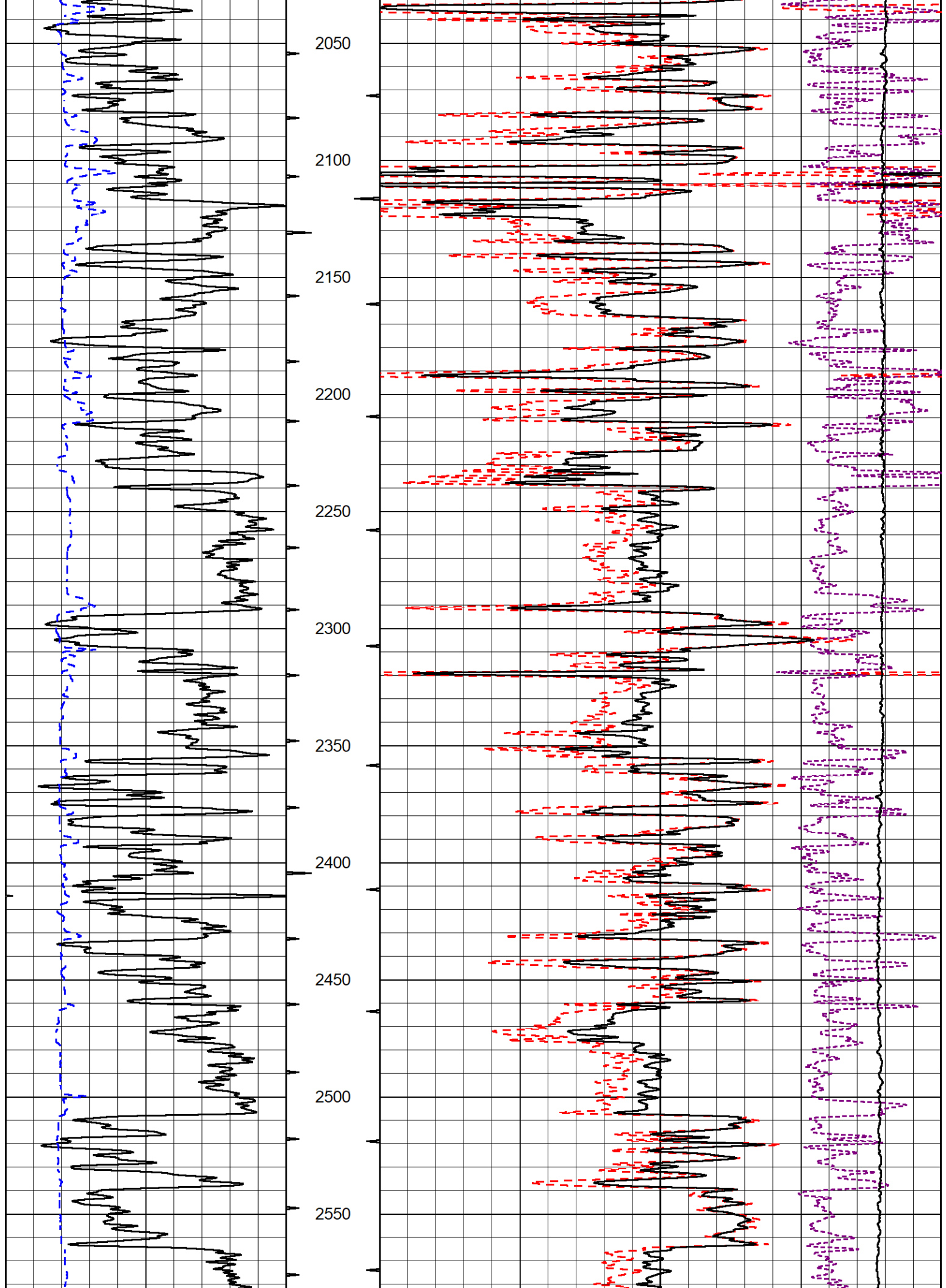
MAIN PASS

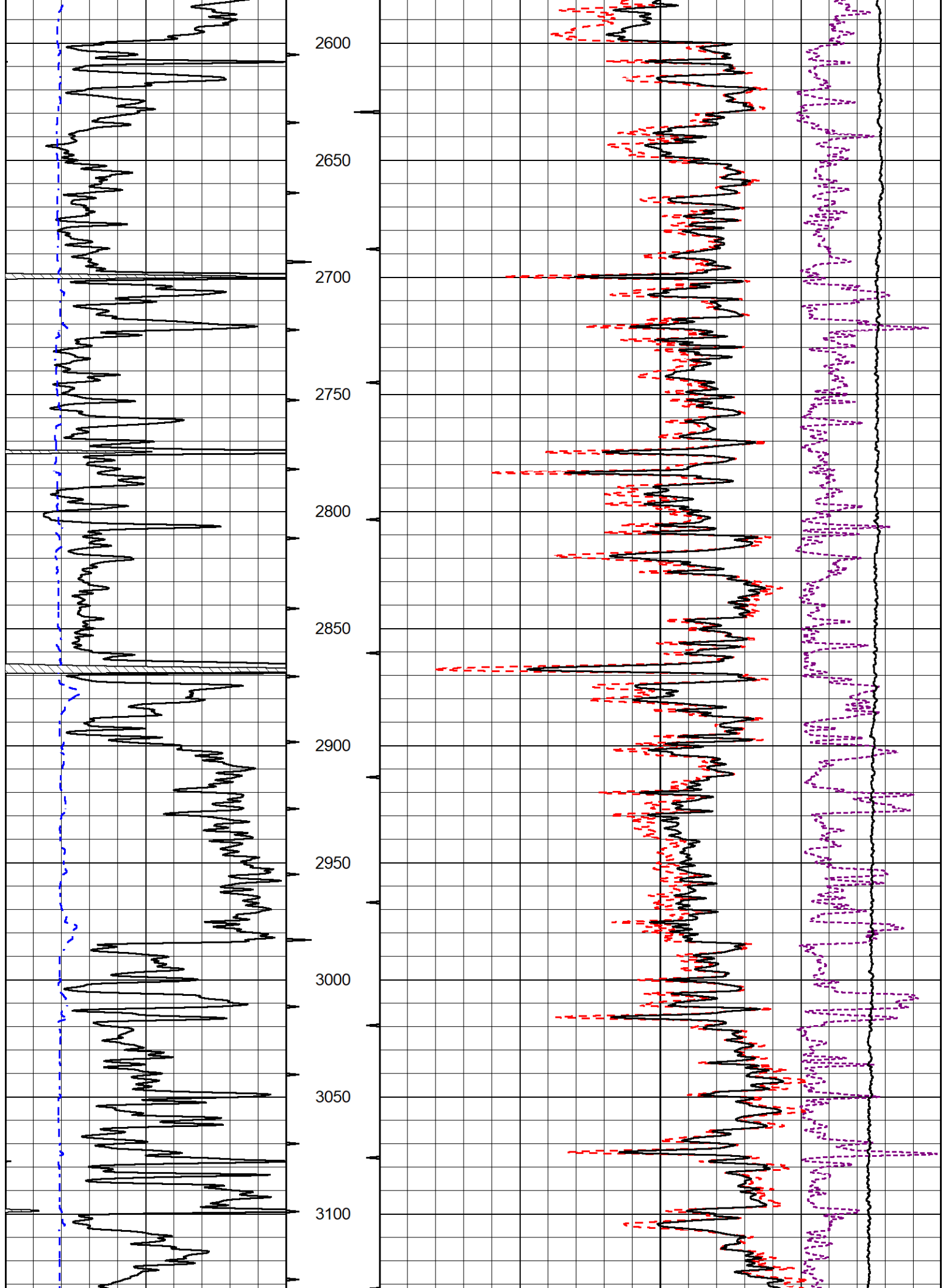
Database File rama_bayer #6-29.db
 Dataset Pathname Stack/pass3.3
 Presentation Format _cdl
 Dataset Creation Mon Aug 07 22:50:41 2023
 Charted by Depth in Feet scaled 1:600

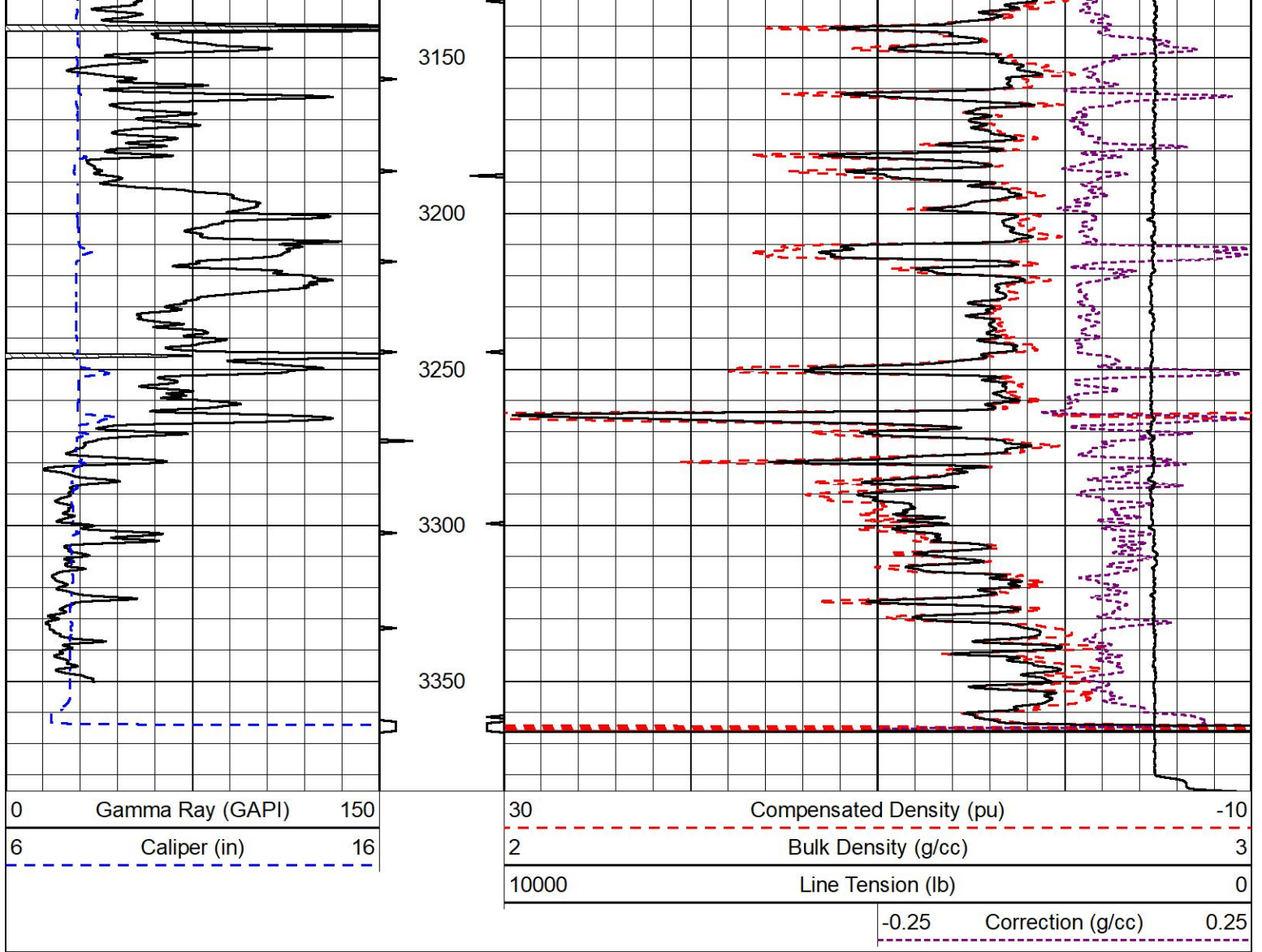
| | | | | | | |
|---|------------------|-----|-------|--------------------------|-------------------|------|
| 0 | Gamma Ray (GAPI) | 150 | 30 | Compensated Density (pu) | -10 | |
| 6 | Caliper (in) | 16 | 2 | Bulk Density (g/cc) | 3 | |
| | | | 10000 | Line Tension (lb) | 0 | |
| | | | | -0.25 | Correction (g/cc) | 0.25 |







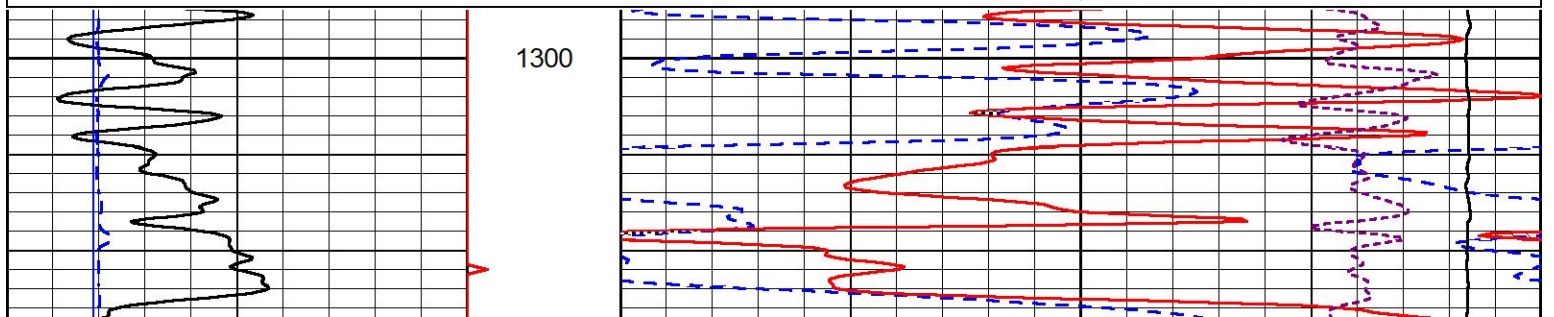
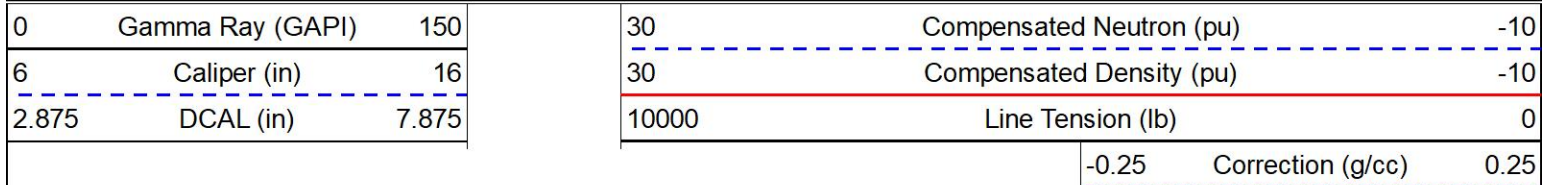


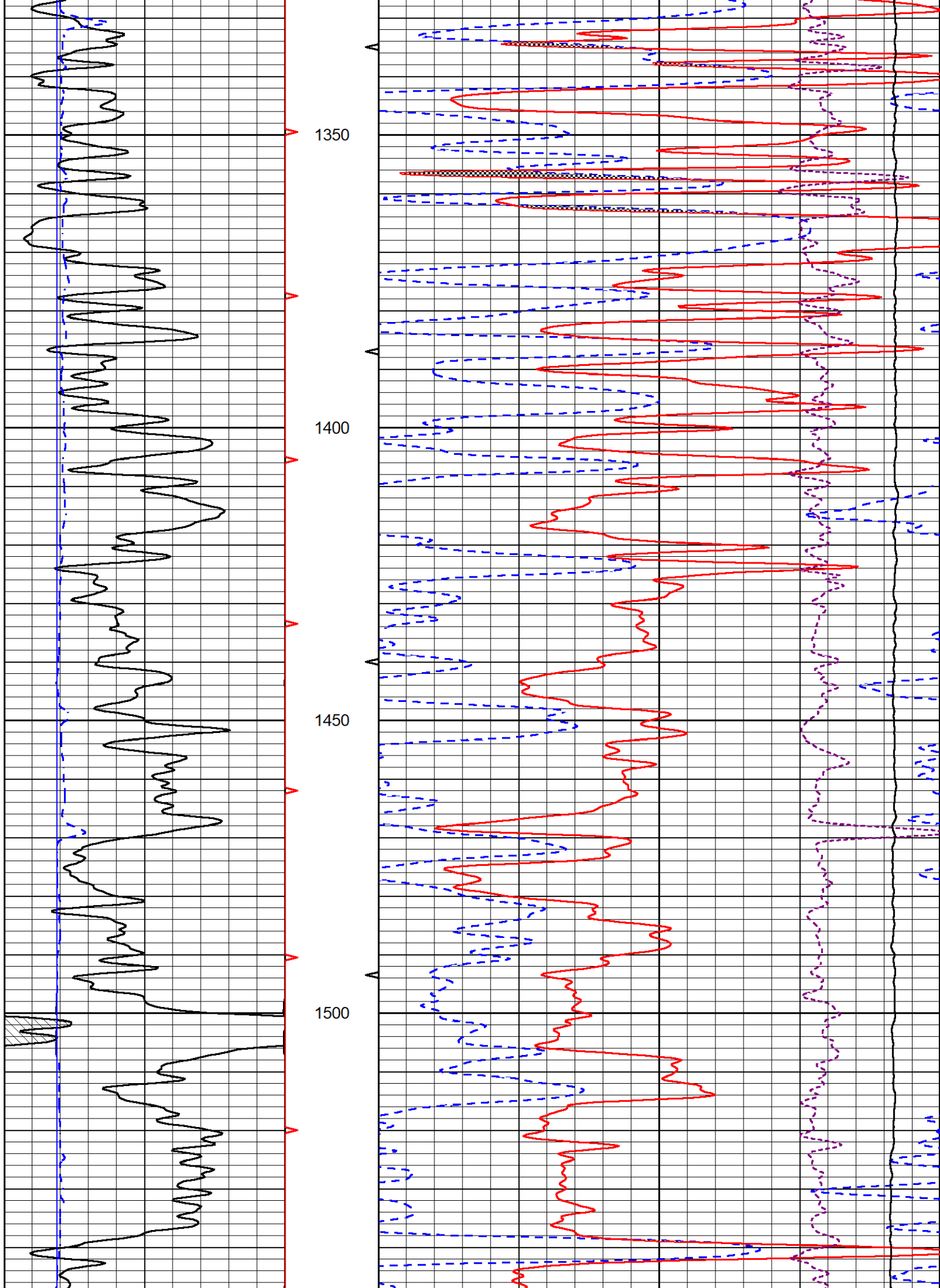


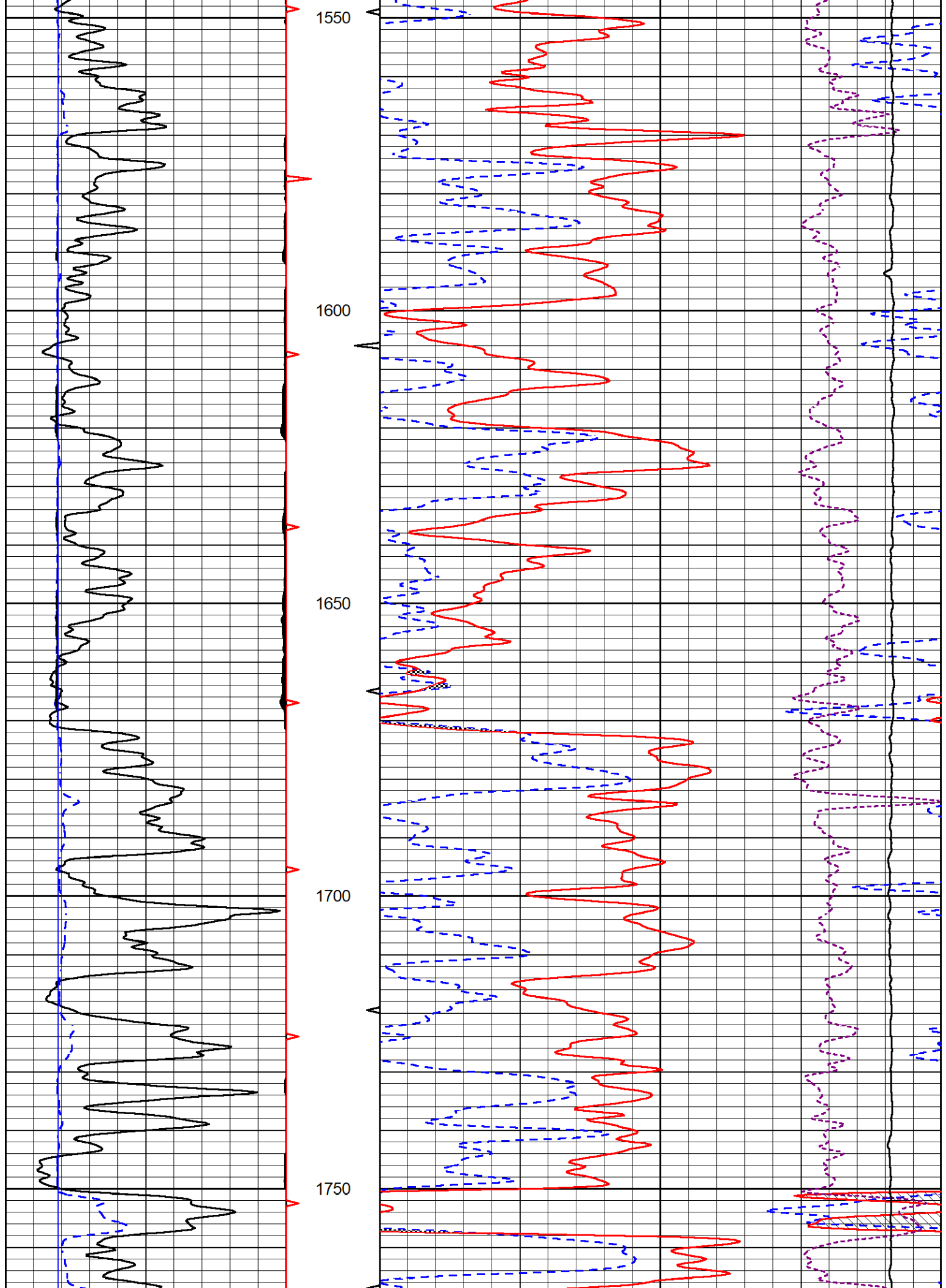
DETAIL SECTION

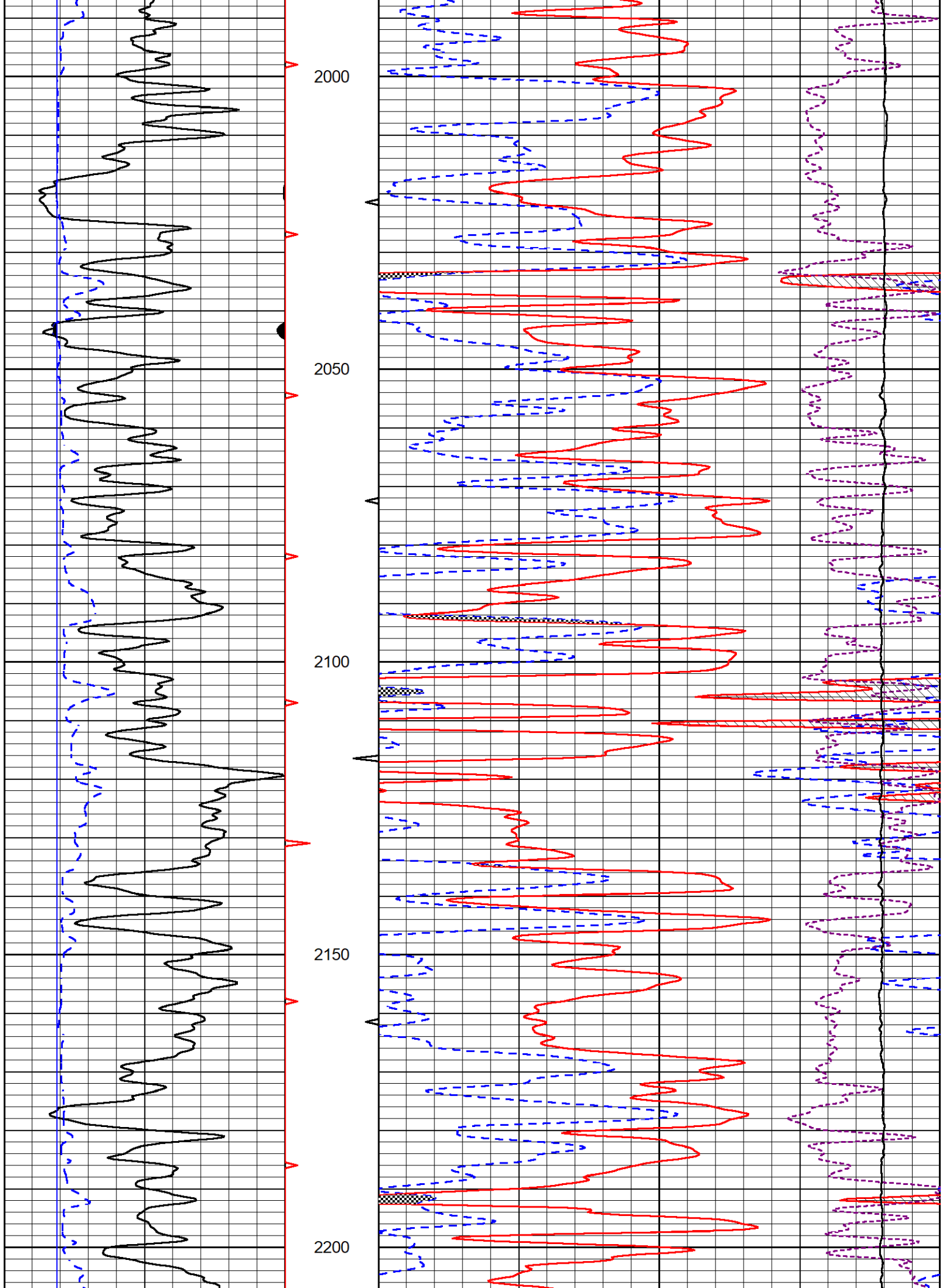
MAIN PASS

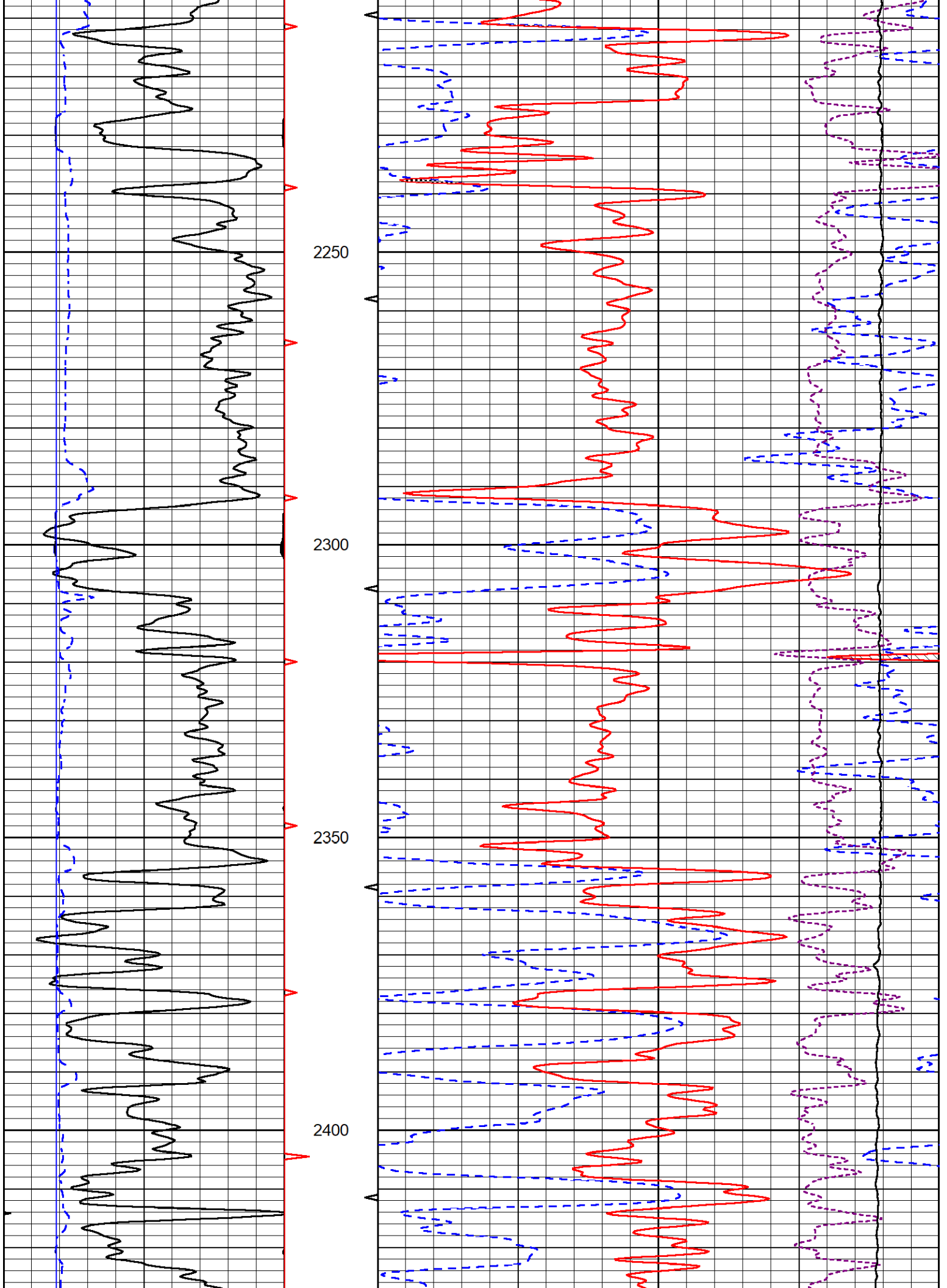
Database File rama_bayer #6-29.db
 Dataset Pathname Stack/pass3.1
 Presentation Format _CNDLS~1
 Dataset Creation Mon Aug 07 22:59:49 2023
 Charted by Depth in Feet scaled 1:240

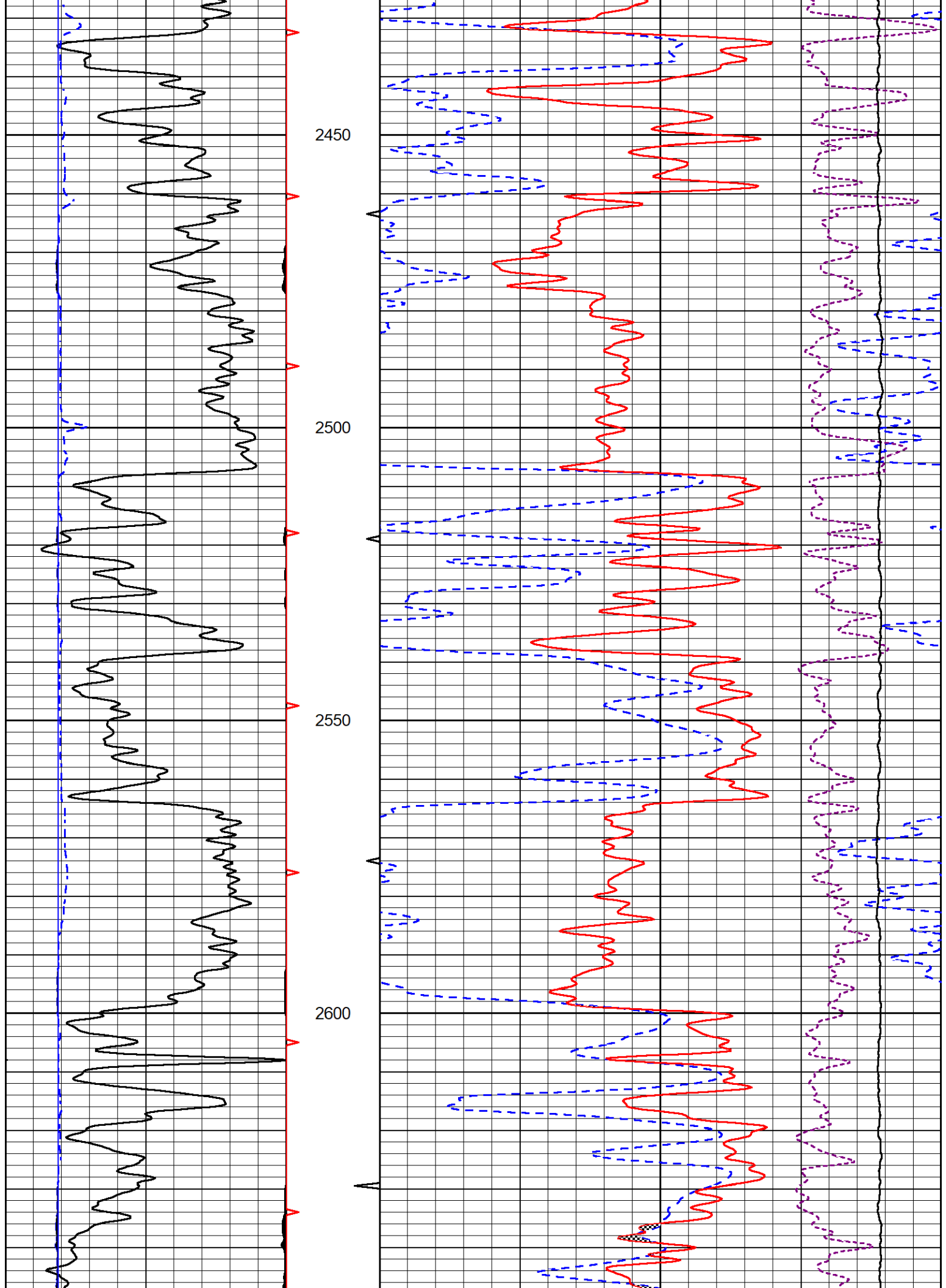


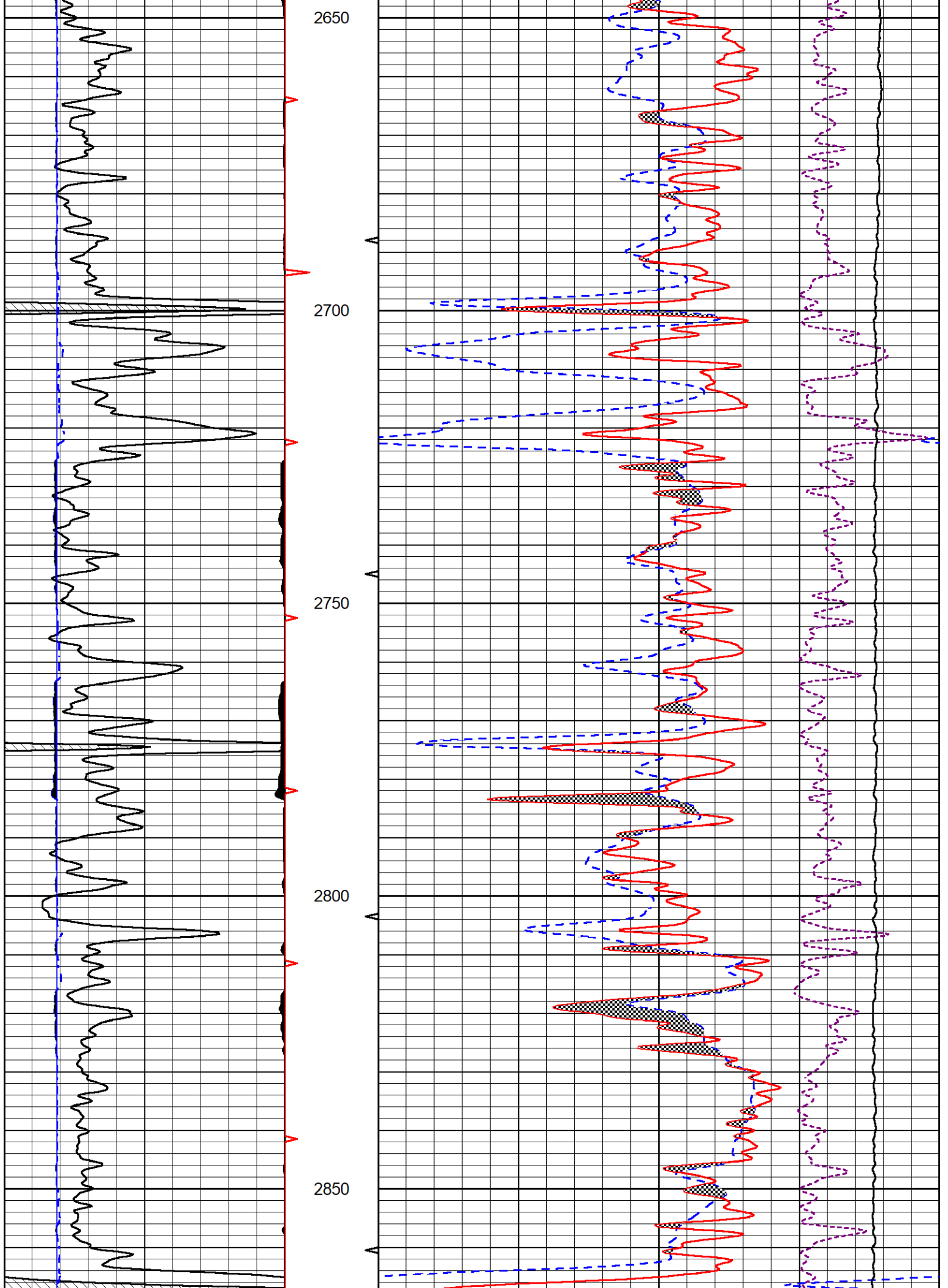


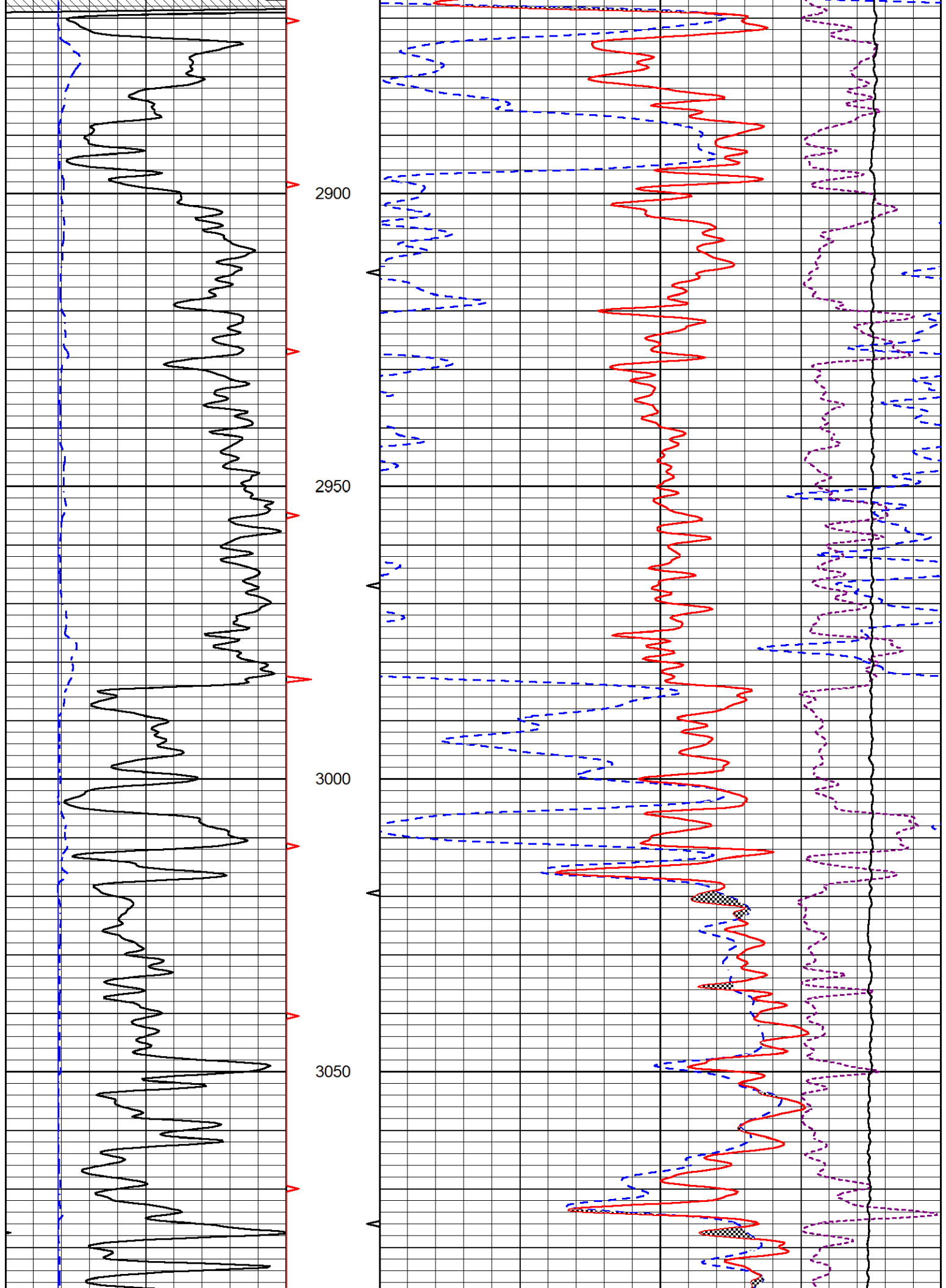


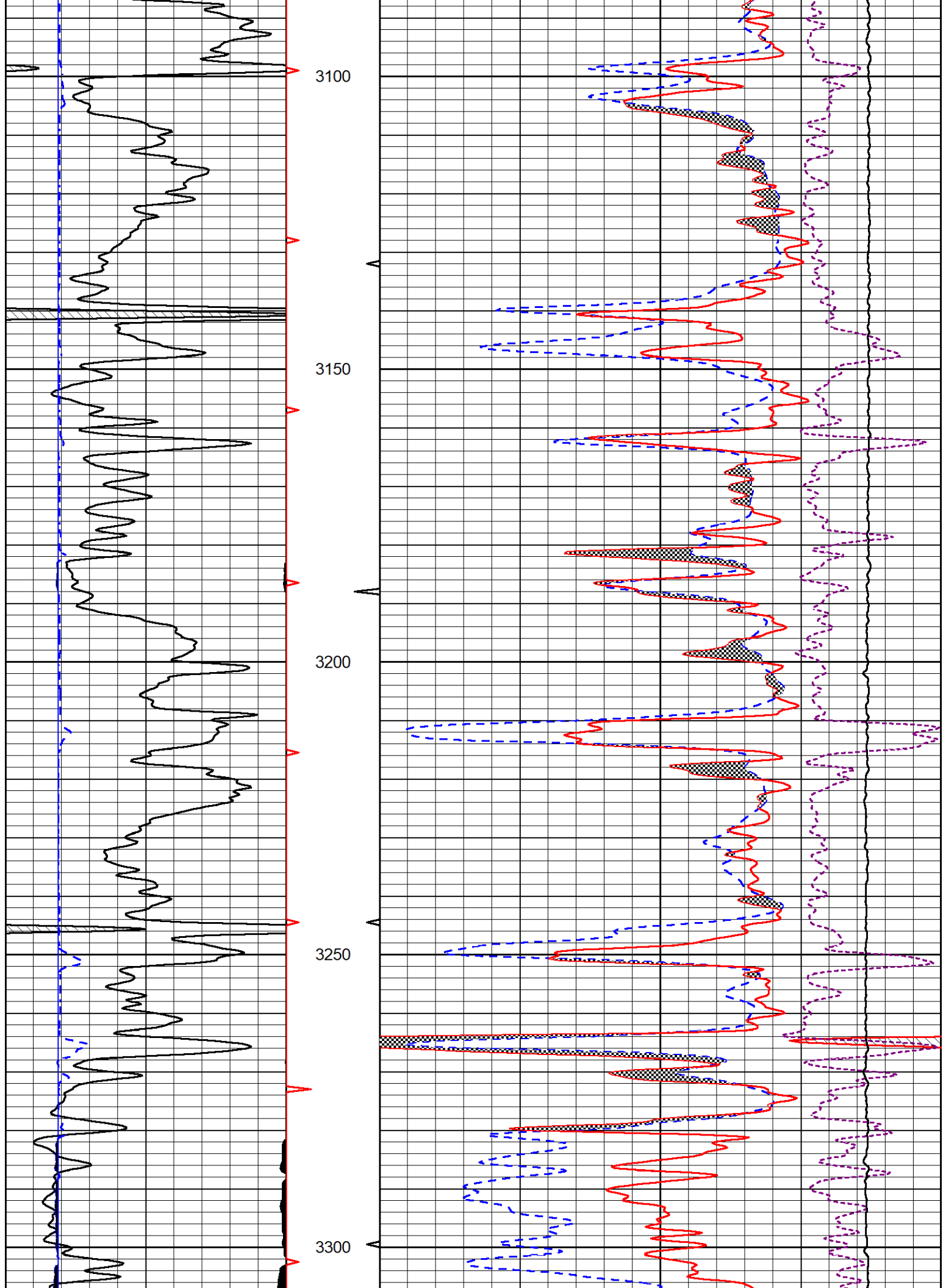


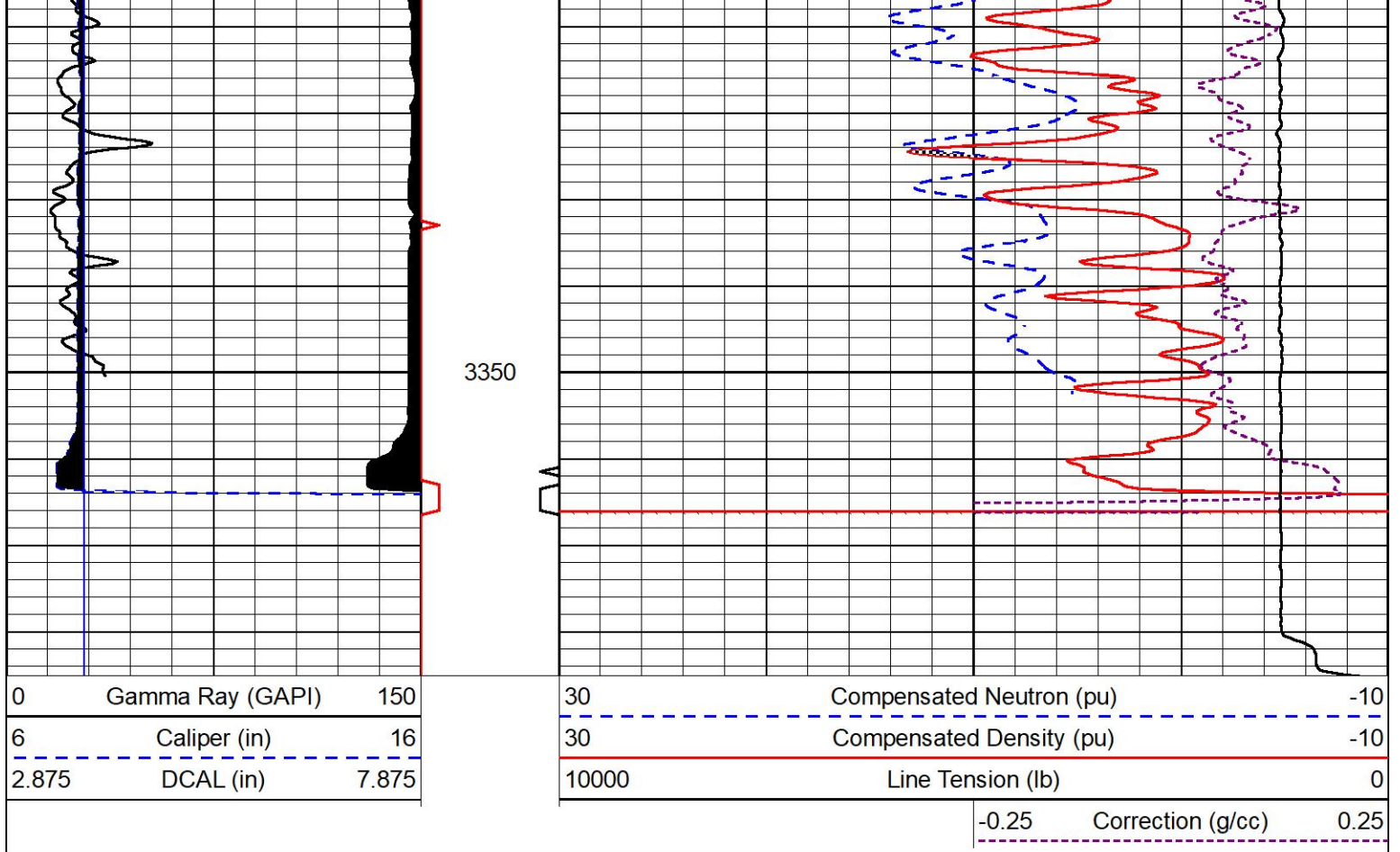










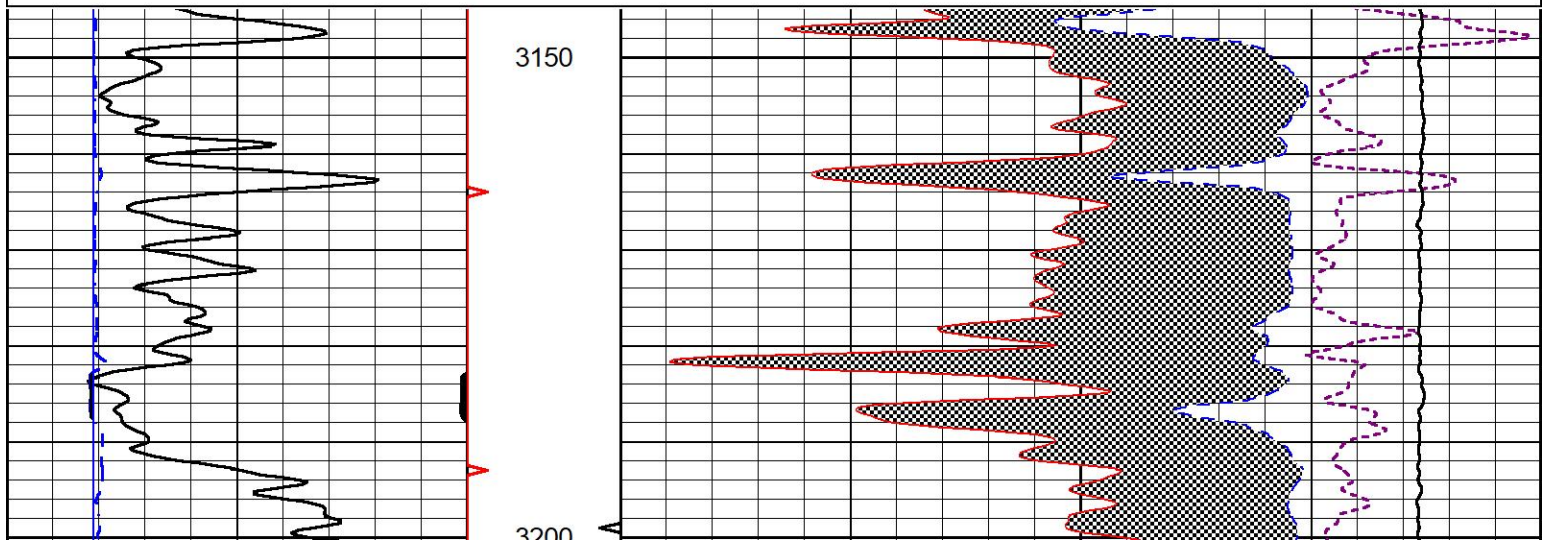
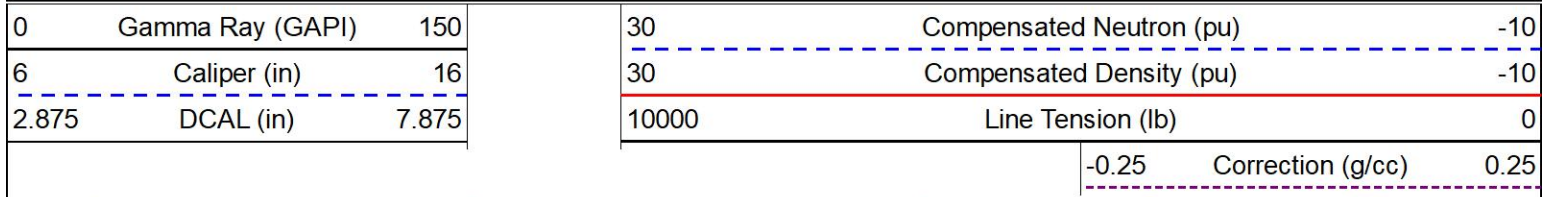


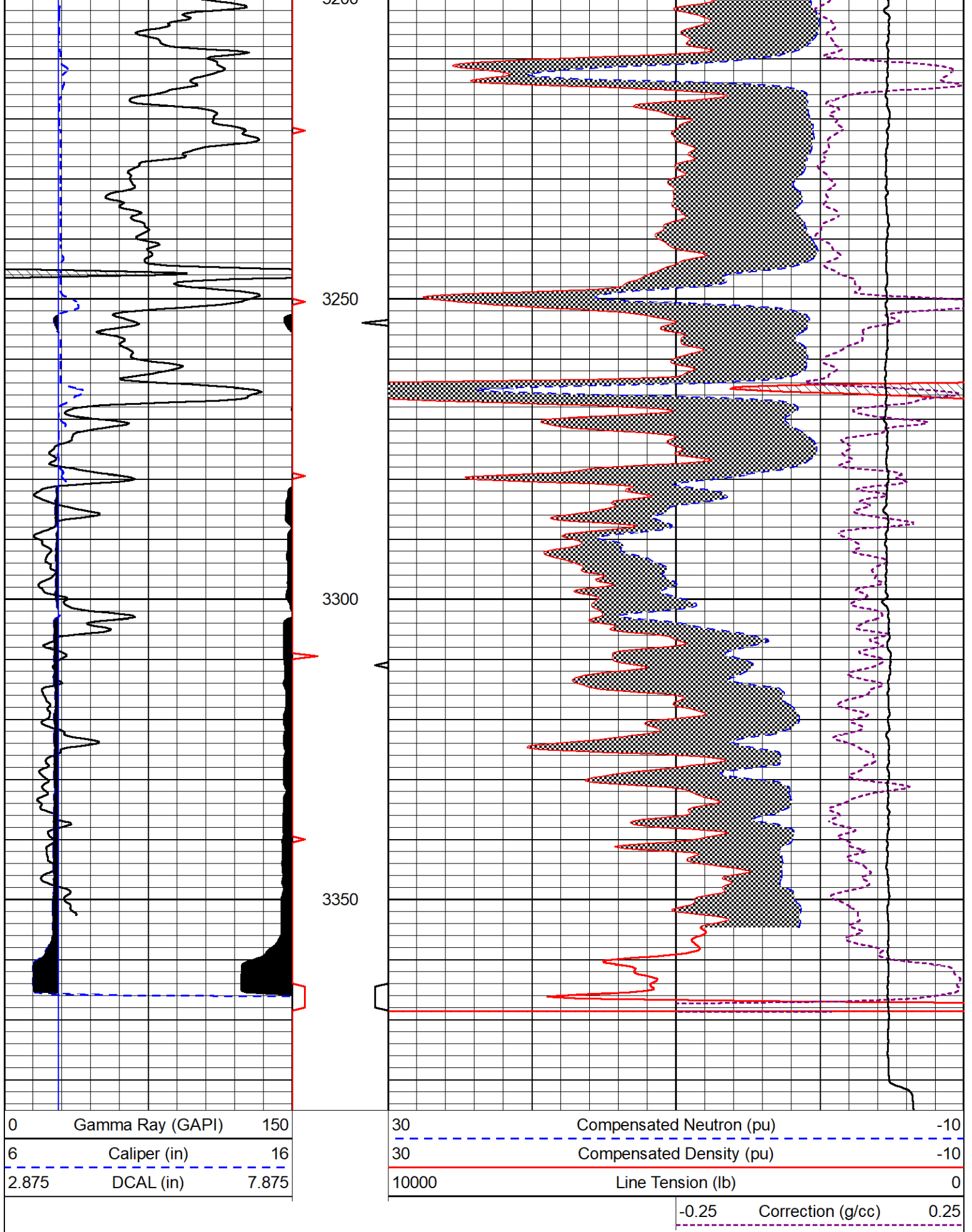
MIDWEST WIRELINE

REPEAT SECTION

DOLOMITE MATRIX (2.85)

Database File rama_bayer #6-29.db
 Dataset Pathname Stack/pass2.2
 Presentation Format _CNDLS~1
 Dataset Creation Mon Aug 07 22:18:16 2023
 Charted by Depth in Feet scaled 1:240





Calibration Report

Dual Induction Calibration Report

Serial-Model: 507-M&W
 Surface Cal Performed:

| Loop: | Readings | | References | | Results | | |
|--------|----------|---------|------------|---------|---------|-------|---------|
| | Air | Loop | Air | Loop | m | b | |
| Deep | 68.570 | 638.100 | 0.000 | 255.800 | mmho/m | 0.500 | -37.000 |
| Medium | 184.288 | 716.191 | 0.000 | 255.800 | mmho/m | 0.470 | -84.000 |

Compensated Density Calibration Report

Serial-Model: 307-11-M&W
 Source / Verifier: 20762B / 2ci
 Master Calibration Performed: Tue Jun 6 21:48:20 2023
 Before Survey Verification Performed:
 After Survey Verification Performed:

Master Calibration

| | Density | | Far Detector | Near Detector | |
|---------------------|---------|------|-----------------------------|---------------|-----|
| Magnesium | 1.755 | g/cc | 3689.70 | 4749.82 | cps |
| Aluminum | 2.590 | g/cc | 822.19 | 3221.38 | cps |
| Spine Angle = 75.50 | | | Density/Spine Ratio = 0.538 | | |
| | Size | | Reading | | |
| Small Ring | 6.00 | in | 1.16 | | |
| Large Ring | 18.00 | in | 1.01 | | |

Compensated Neutron Calibration Report

Serial Number: 207
 Tool Model: M&W

CALIBRATION

| Detector | Readings | Target | Normalization |
|-------------|-------------|-------------|---------------|
| Short Space | 6240.00 cps | 1000.00 cps | 1.6025 |
| Long Space | 460.00 cps | 1000.00 cps | 1.9500 |

Gamma Ray Calibration Report

Serial Number: 105
 Tool Model: M&W
 Performed: Mon Aug 7 20:46:01 2023

Calibrator Value: 500.0 GAPI

Background Reading: 24.0 cps
 Calibrator Reading: 637.0 cps

Sensitivity: 0.6000 GAPI/cps



MIDWEST WIRELINE

| | |
|---------|------------------------------|
| Company | KAMA Operating Company, Inc. |
| Well | Bayer #6-29 |
| Field | Chase-Silica |
| County | Rice |
| State | Kansas |