



MIDWEST WIRELINE

# BOREHOLE COMPENSATED SONIC

Company RAMA Operating Company, Inc.  
 Well Bayer #6-29  
 Field Chase-Silica  
 County Rice  
 State Kansas

Company RAMA Operating Company, Inc.  
 Well Bayer #6-29  
 Field Chase-Silica  
 County Rice State Kansas

Location: API #: 15-159-22891-00-00  
 SE SW NW SW  
 1381 FSL & 335 FWL  
 SEC 29 TWP 19S RGE 10W

Other Services  
 CNL/CDL  
 MEL/DIL

Date	8/7/2023						
Run Number	Two						
Type Log	BHCS						
Depth Driller	3380						
Depth Logger	3380						
Bottom Logged Interval	3368						
Top Logged Interval	300						
Type Fluid In Hole	Chemical						
Salinity, PPM CL	4000						
Density	9.3						
Level	Full						
Max. Rec. Temp. F	110						
Operating Rig Time	4 Hours						
Equipment -- Location	P-24 Hays						
Recorded By	T. Martin						
Witnessed By	Josh Austin						
Borehole Record							
Run No.	Bit	From	To	Size	Wgt.	From	To
One	12.25	00	348	8.625	23	00	348
Two	7.875	348	TD				
Casing Record							

<<< Fold Here >>>

All interpretations are opinions based on inferences from electrical or other measurements and Midwest Wireline LLC cannot and does not guarantee the accuracy or correctness of any interpretation, and Midwest Wireline LLC will not be liable or responsible for any loss, costs, damages, or expenses incurred or sustained by anyone resulting from any interpretation made by any of our officers, agents or employees.

**Comments**

N/A DENOTES NOT AVAILABLE OR NON-APPLICABLE.

Ellinwood, KS, E to Silica(2nd Rd),  
 1.25 N, E into

Log Measured From: Kelly Bushing                      11 Ft. Above Permanent Datum

THANK YOU FOR USING MIDWEST WIRELINE LLC  
 785-625-3858

Your Midwest Wireline Crew	This Log Record Was Witnessed By
Engineer: T. Martin	Primary Witness: Josh Austin
Operator:	Secondary Witness:
Operator:	Secondary Witness:
Operator:	Secondary Witness:

Case No.	Offset (ft)	Schematic	Description	Length (ft)	O.D. (in)	Weight (lb)
----------	-------------	-----------	-------------	-------------	-----------	-------------

Sensor	Offset (ft)	Schematic	Description	Length (ft)	O.D. (in)	Weight (lb)
MCAL MI MN	25.50 25.50 25.50		ML-Pengo (Pengo1)	5.50	3.50	100.00
			CENT-PENGO (4-PENGO)	4.25	3.00	70.00
WVF4 WVF1	12.25 12.25		SLT-PENGO (601) 3 1/2 BHC Sonic	16.00	3.50	300.00
WVF3 WVF2	10.25 10.25		CENT-PENGO (3-PENGO)	4.25	3.00	70.00

Dataset: rama\_bayer #6-29.db: field/well/SonMel/pass3  
 Total length: 30.00 ft  
 Total weight: 540.00 lb  
 O.D.: 3.50 in

# Log Variables

DatabaseC:\ProgramData\Warrior\Data\rama\_bayer #6-29.db  
 Dataset field/well/Stack/pass3.1/\_vars\_

## Top - Bottom

BOREID in 7.875	BOTTEMP degF 110	CASEOD in 5.5	CASETHCK in 0	FLUIDDEN g/cc 1	MATRXDEN g/cc 2.71	NPORSEL Limestone	PERFS No
SNDERR mmho/m 2	SNDERRM mmho/m 0	SPSHIFT mV 580	SRFTEMP degF 80	SZCOR Off	TDEPTH ft 3380		

## Variable Description

BOREID : Borehole I.D.  
 BOTTEMP : Bottom Hole Temperature  
 CASEOD : Casing O.D.  
 CASETHCK : Casing Thickness  
 FLUIDDEN : Fluid Density  
 MATRXDEN : Matrix Density  
 NPORSEL : Neutron Porosity Curve Select

PERFS : Perforation Flag  
 SNDERR : Deep Sonde Error Correction  
 SNDERRM : Medium Sonde Error Correction  
 SPSHIFT : S.P. Baseline Offset  
 SRFTEMP : Surface Temperature  
 SZCOR : CN Size Cor. ?  
 TDEPTH : Total Depth

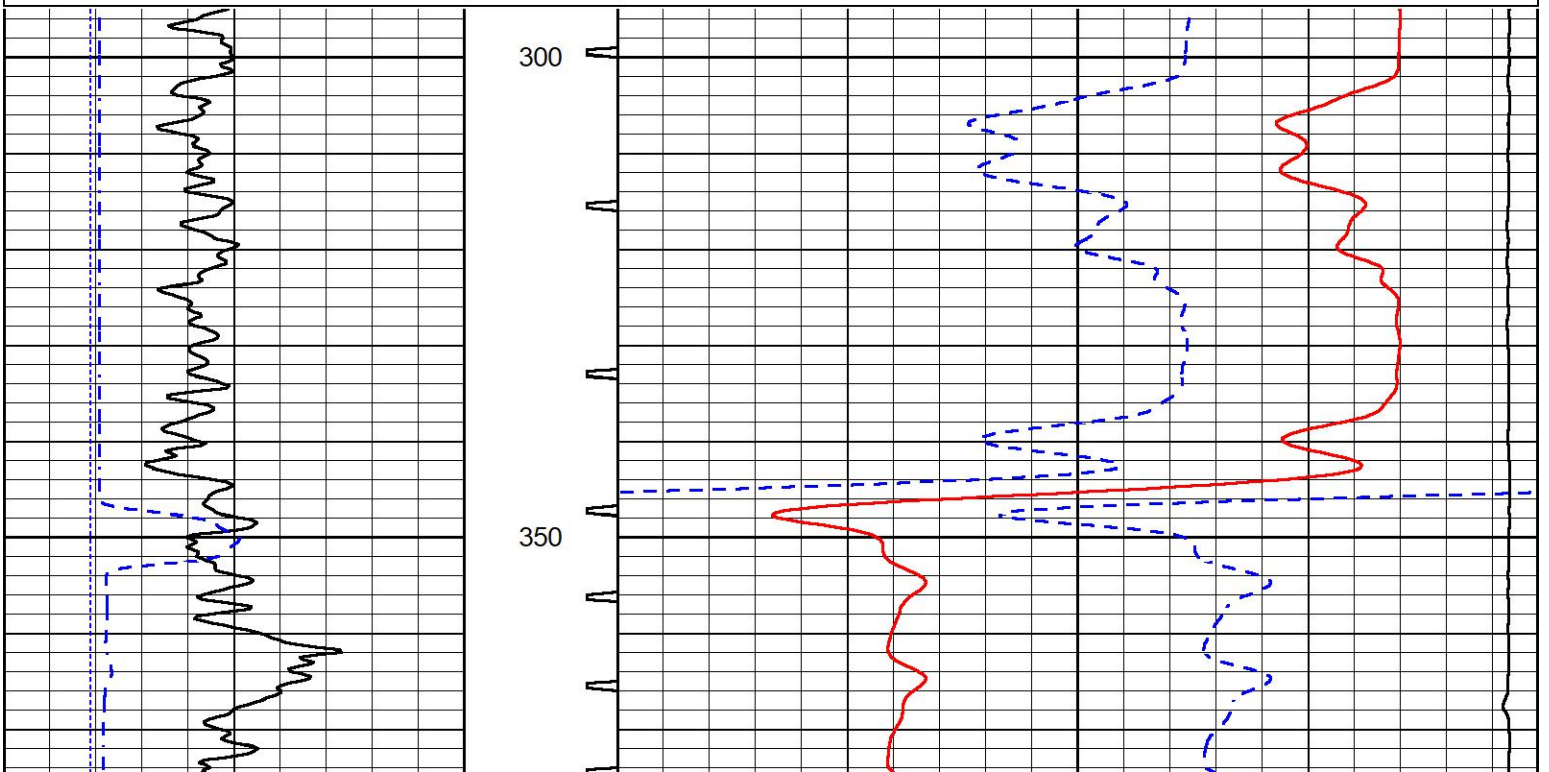


## DETAIL SECTION

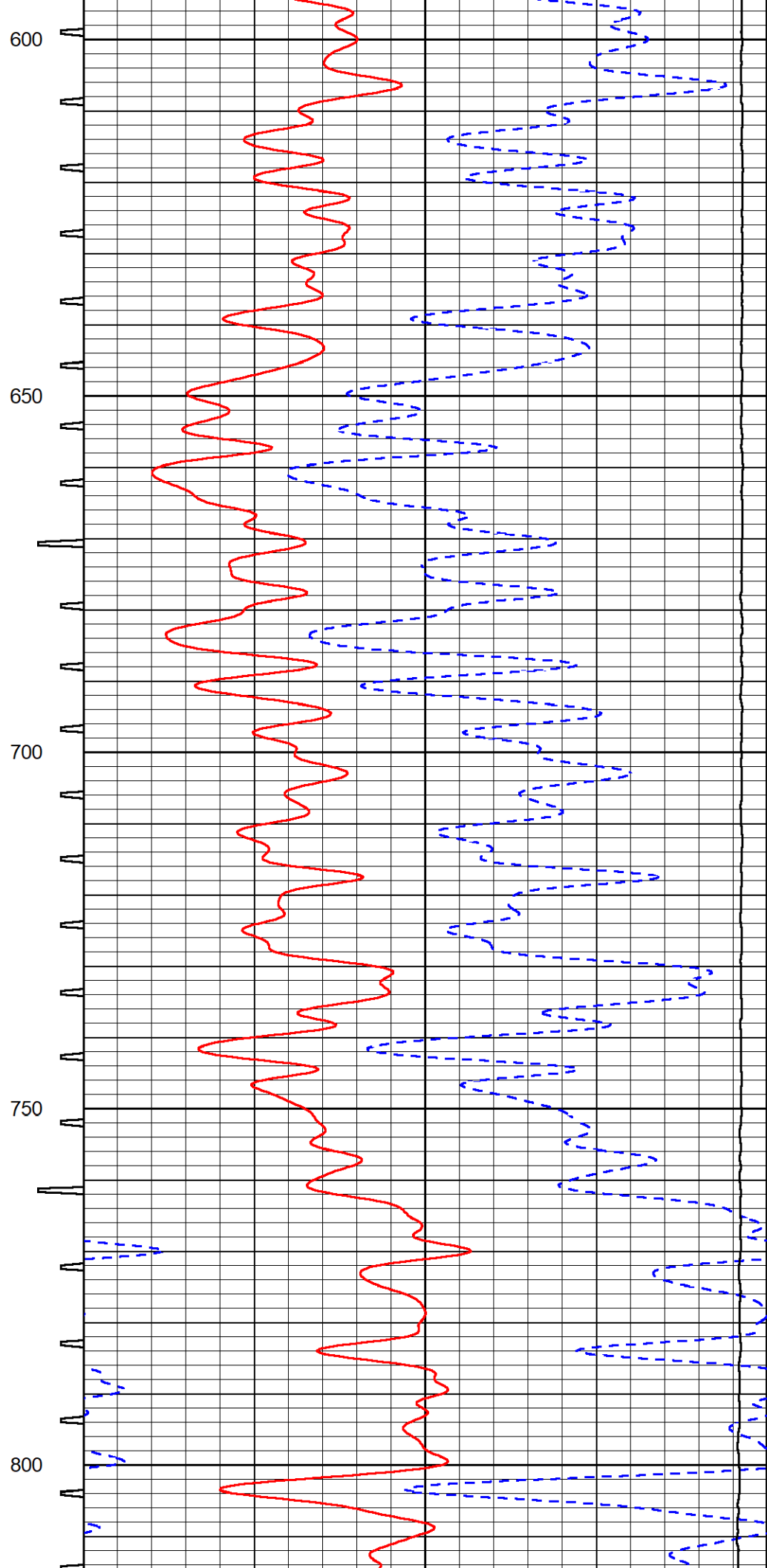
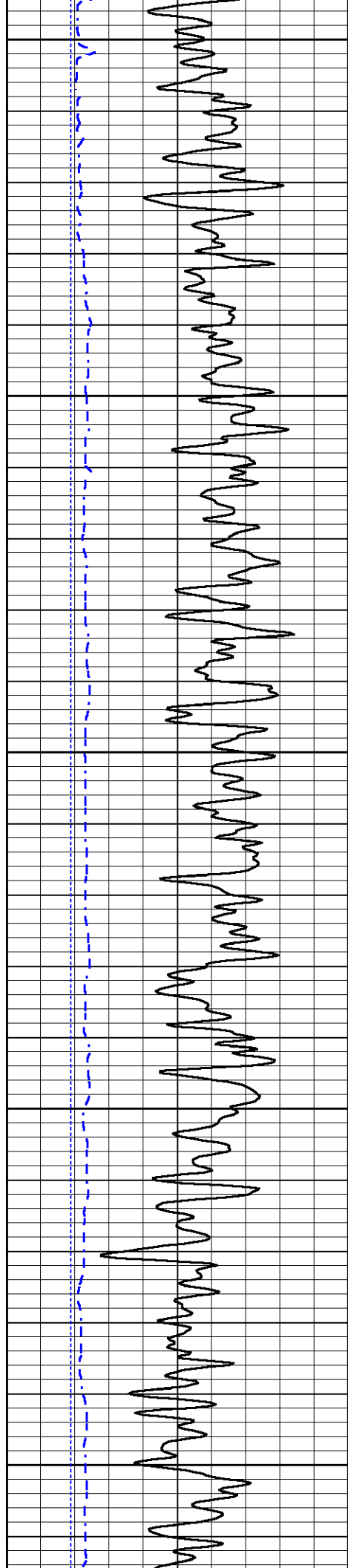
### MAIN PASS

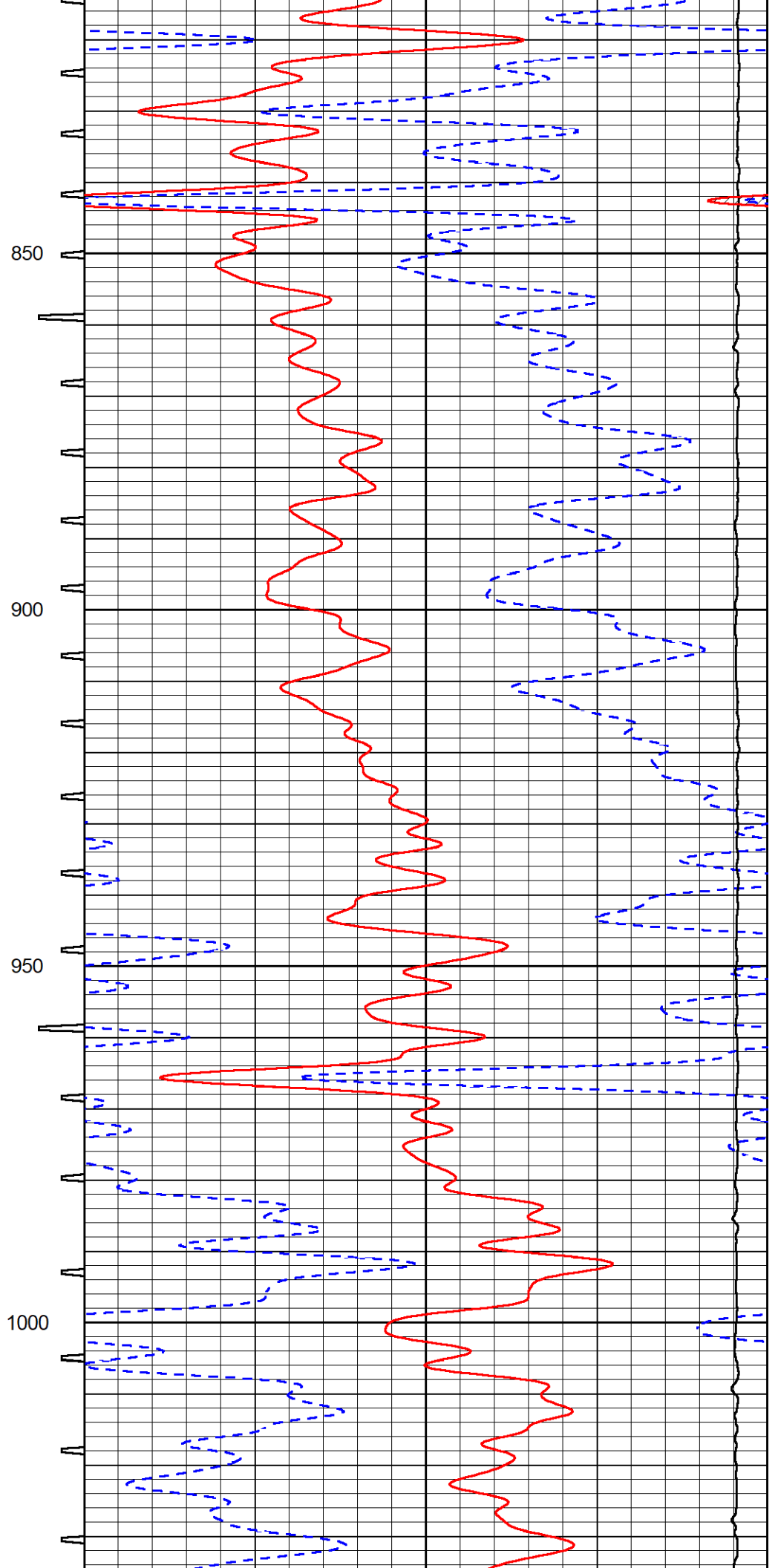
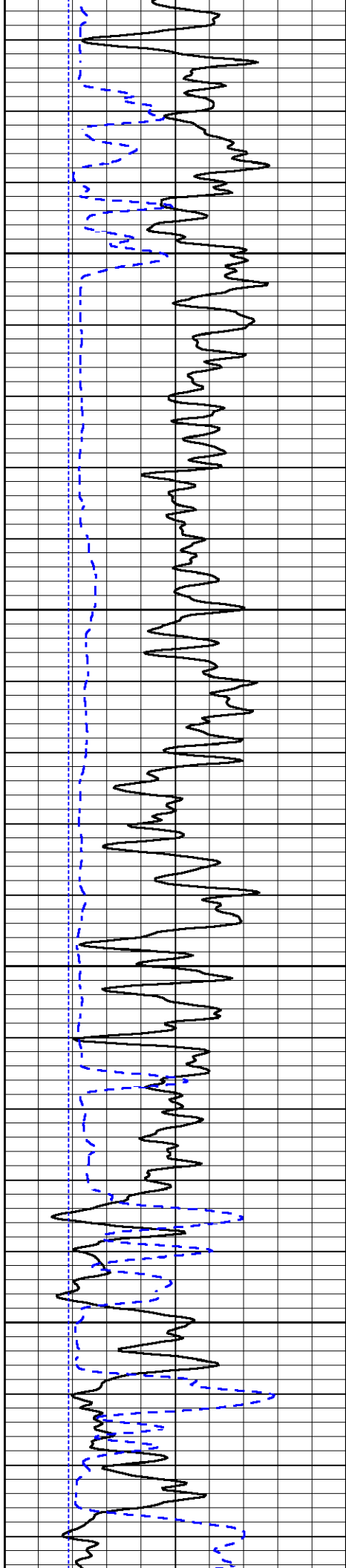
Database File rama\_bayer #6-29.db  
 Dataset Pathname Stack/pass3.1  
 Presentation Format \_sonic  
 Dataset Creation Mon Aug 07 22:59:49 2023  
 Charted by Depth in Feet scaled 1:240

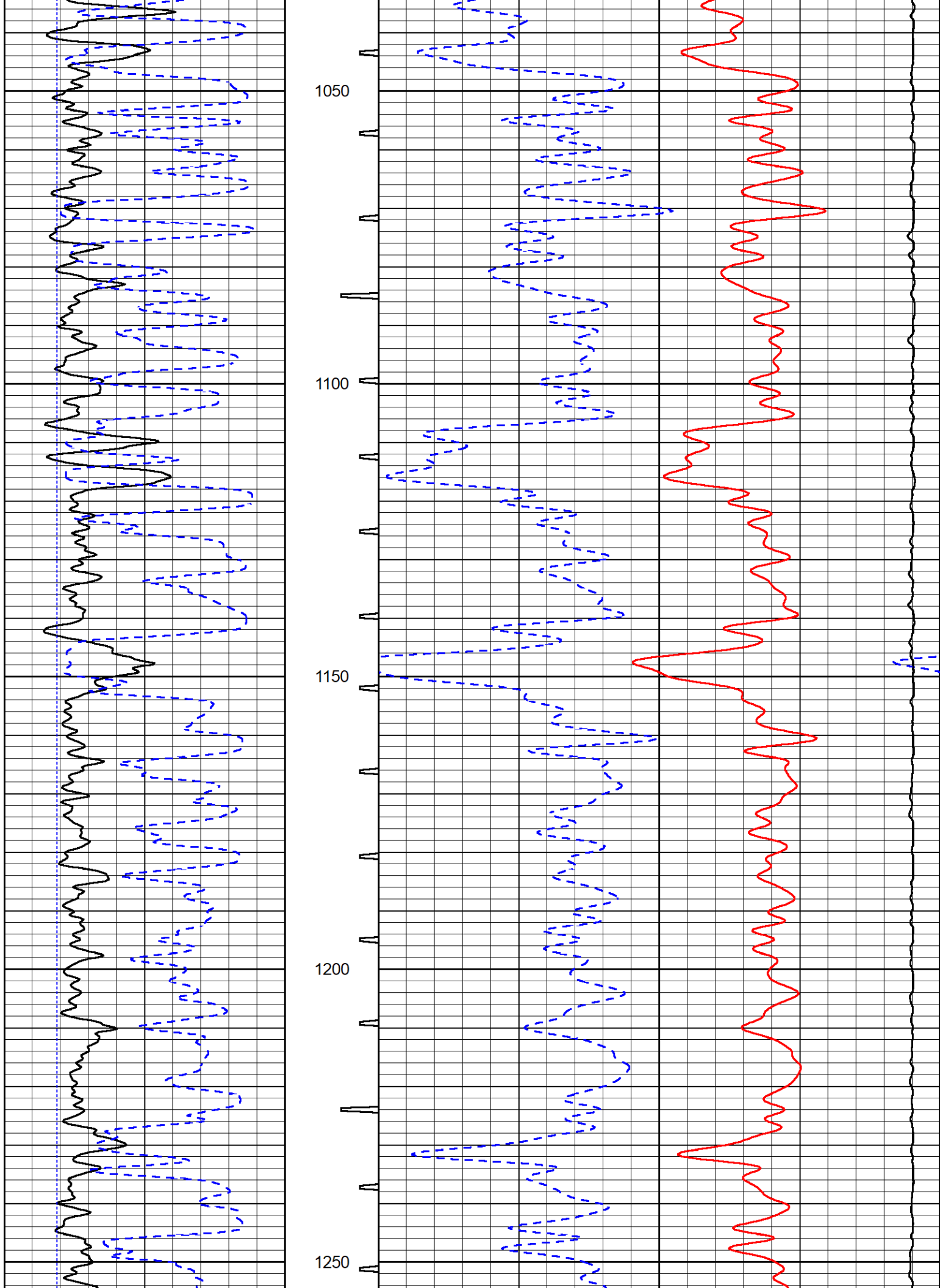
0	Gamma Ray (GAPI)	150	Sonic Int	140	Delta Time (usec/ft) (usec/ft)	40
150	GR (GAPI)	300	5 (msec) 0	30	Sonic Porosity (pu) (pu)	-10
6	Caliper (in)	16		15000	Line Tension (lb)	0

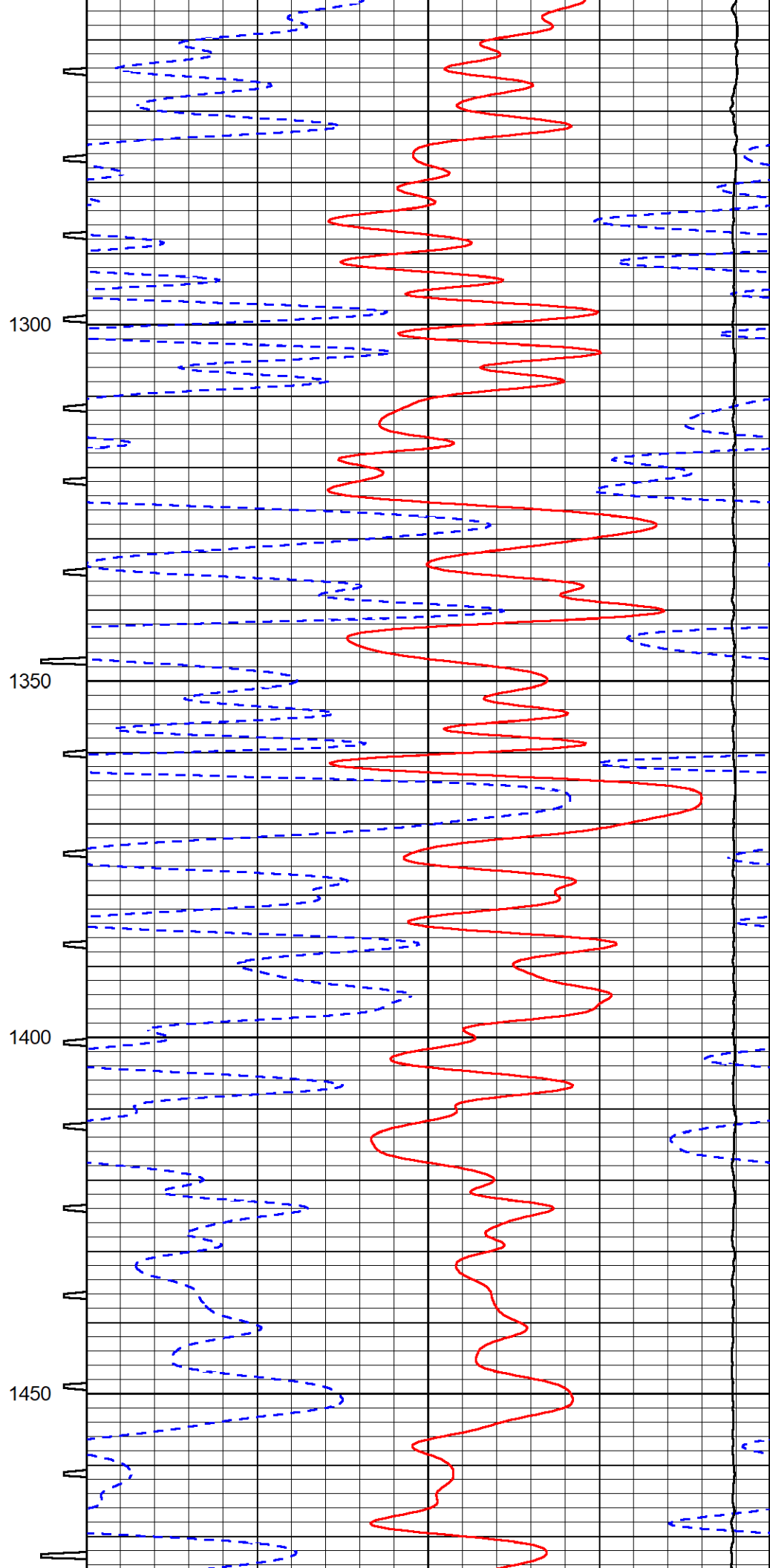
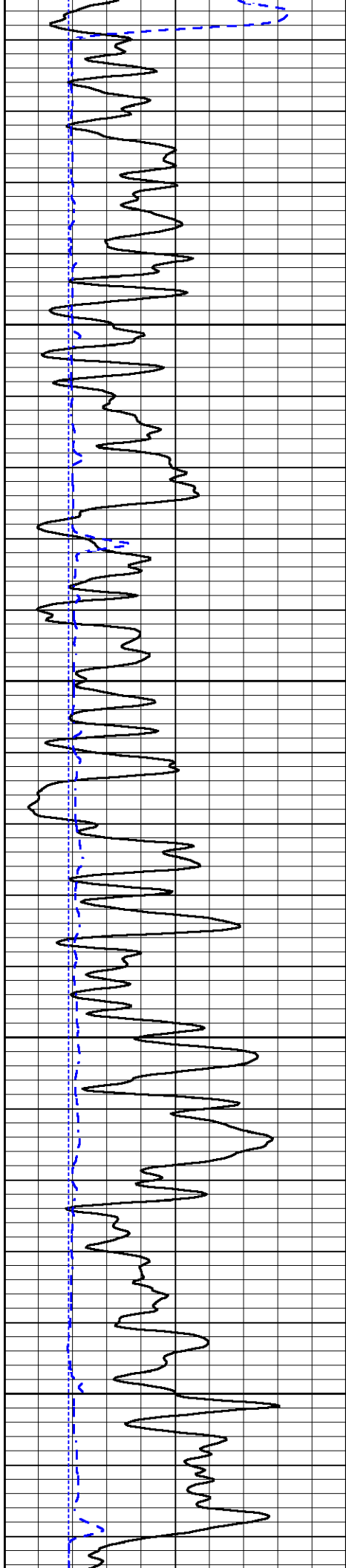


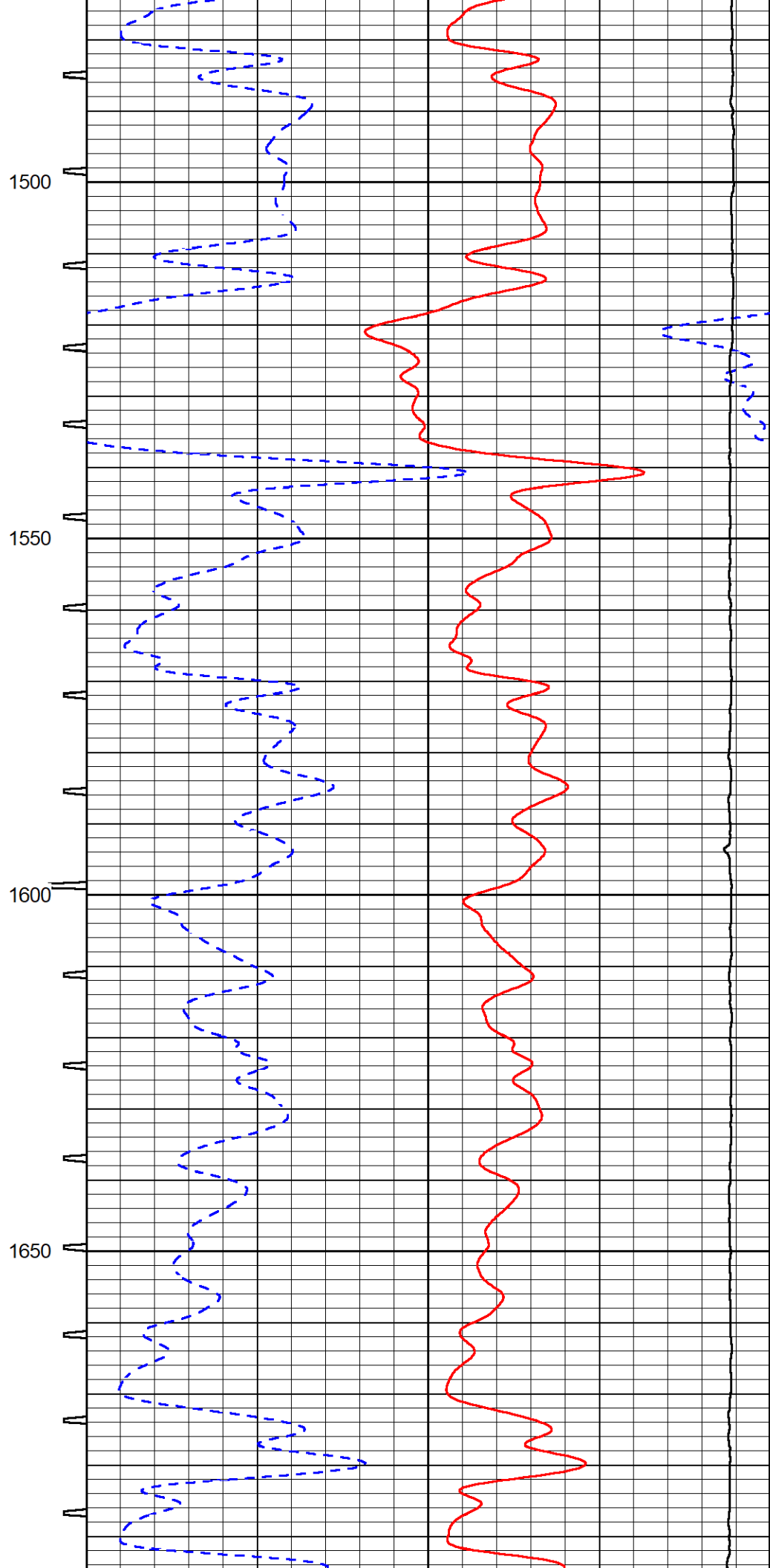
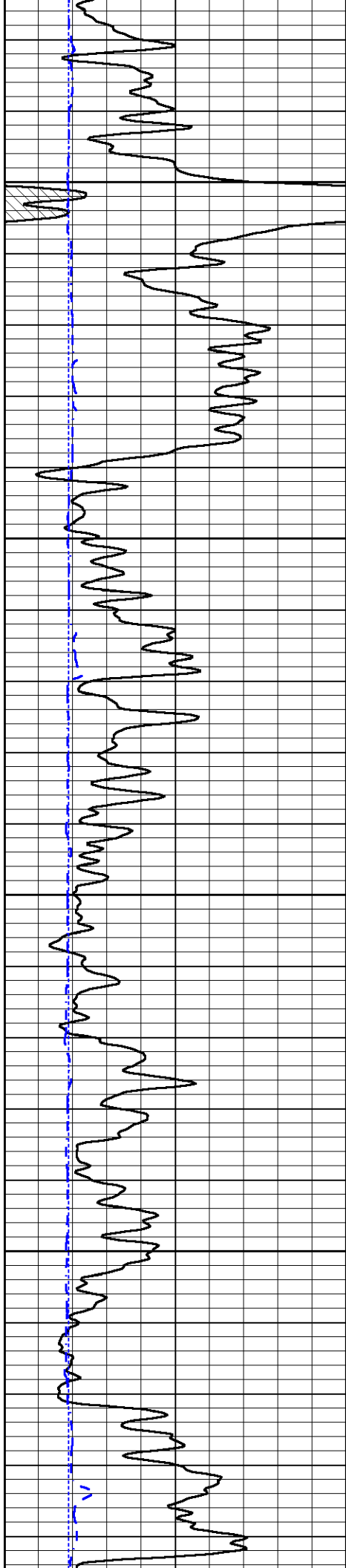


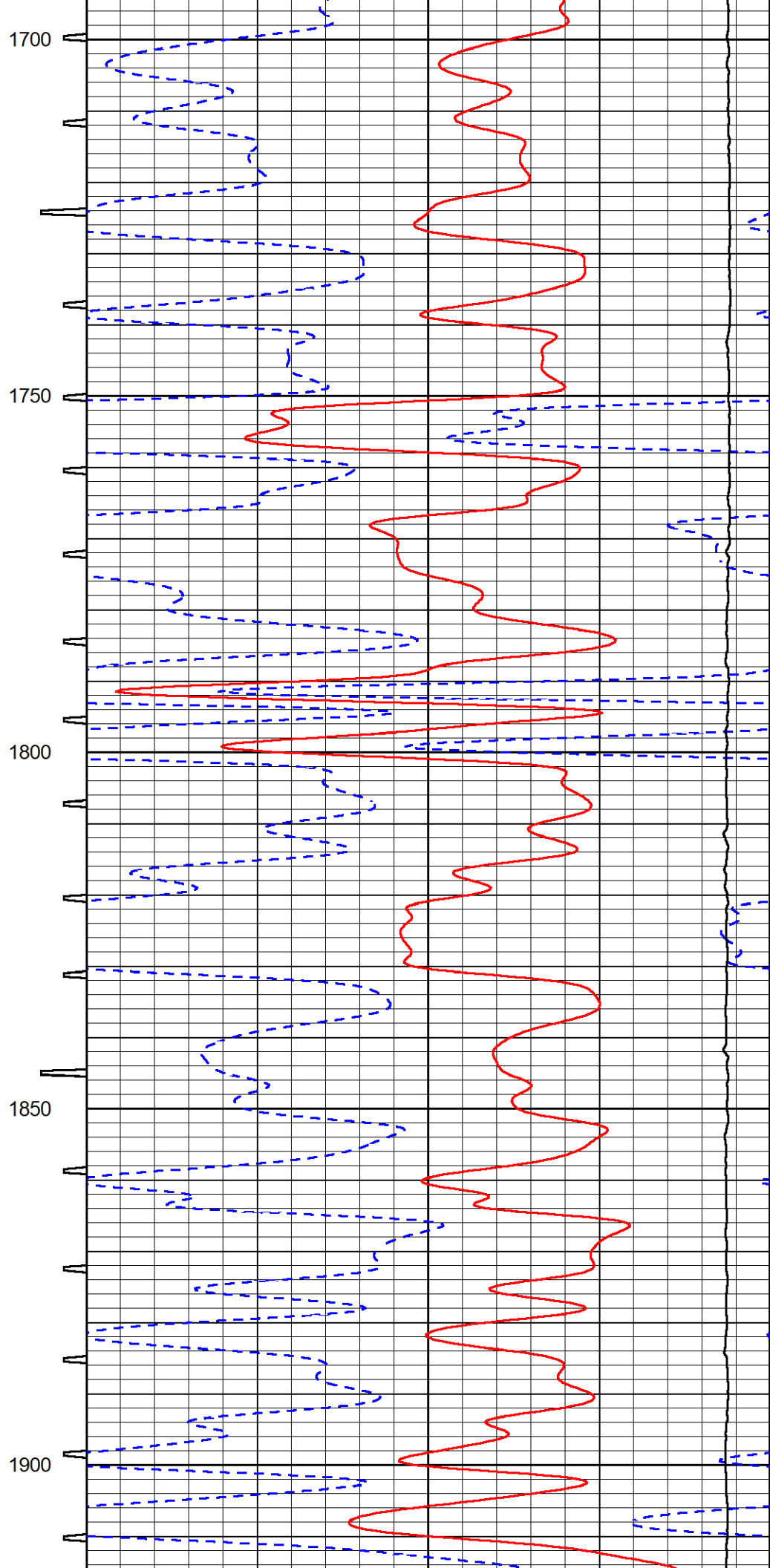
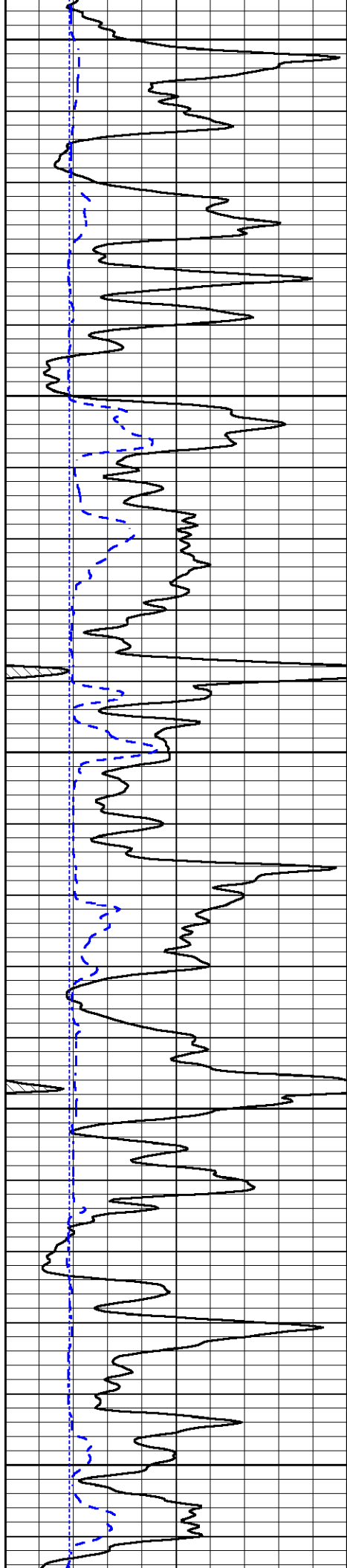


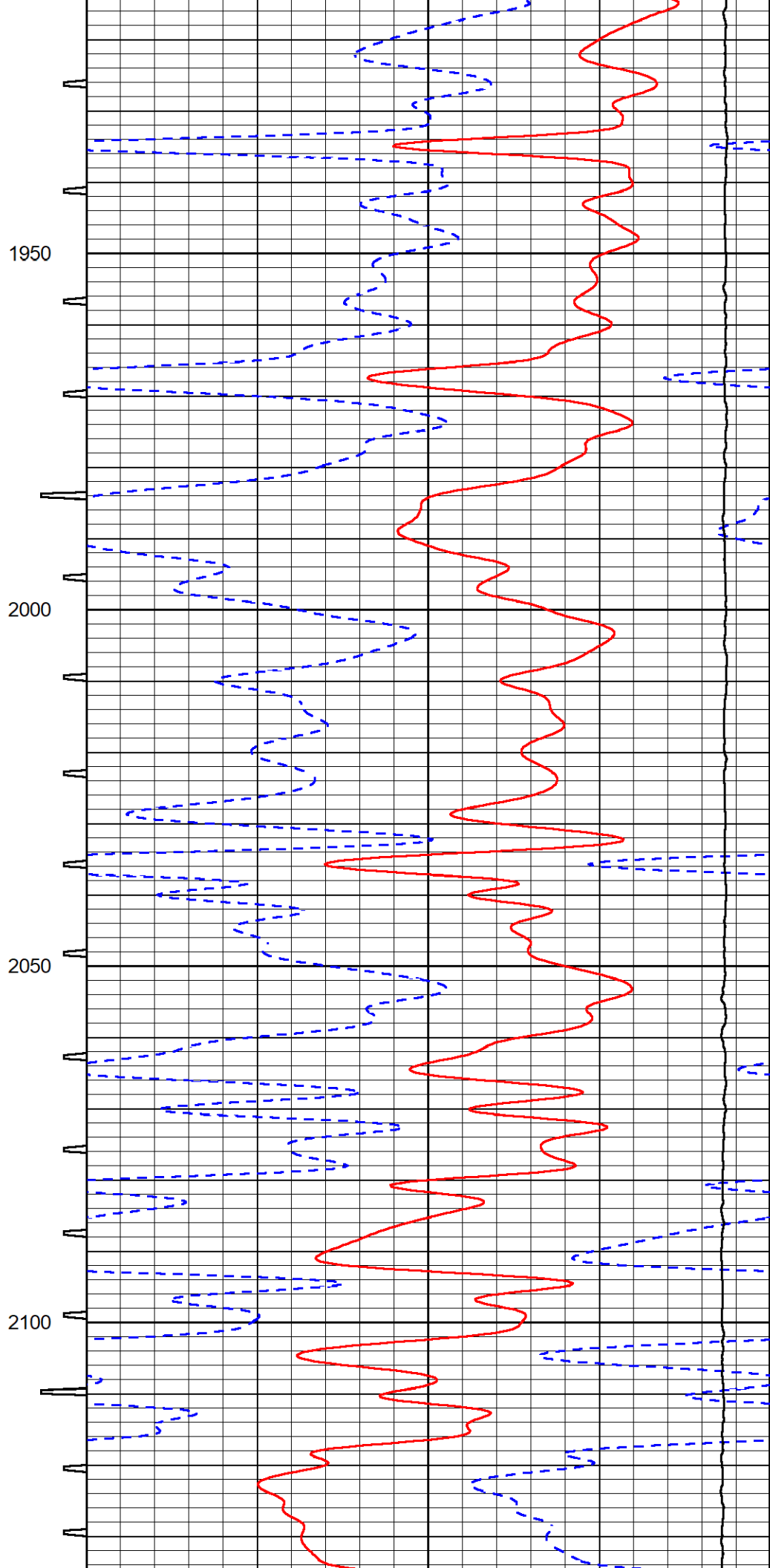
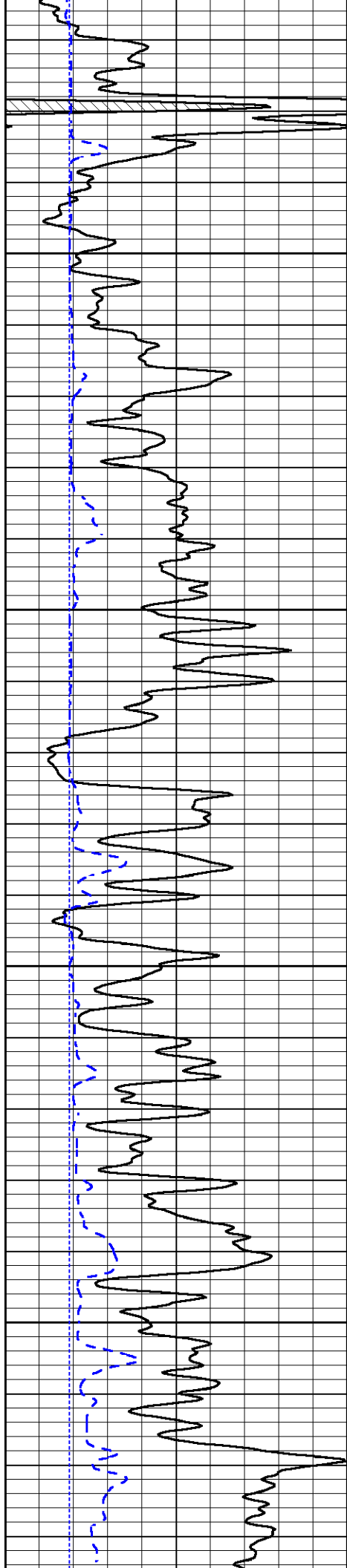


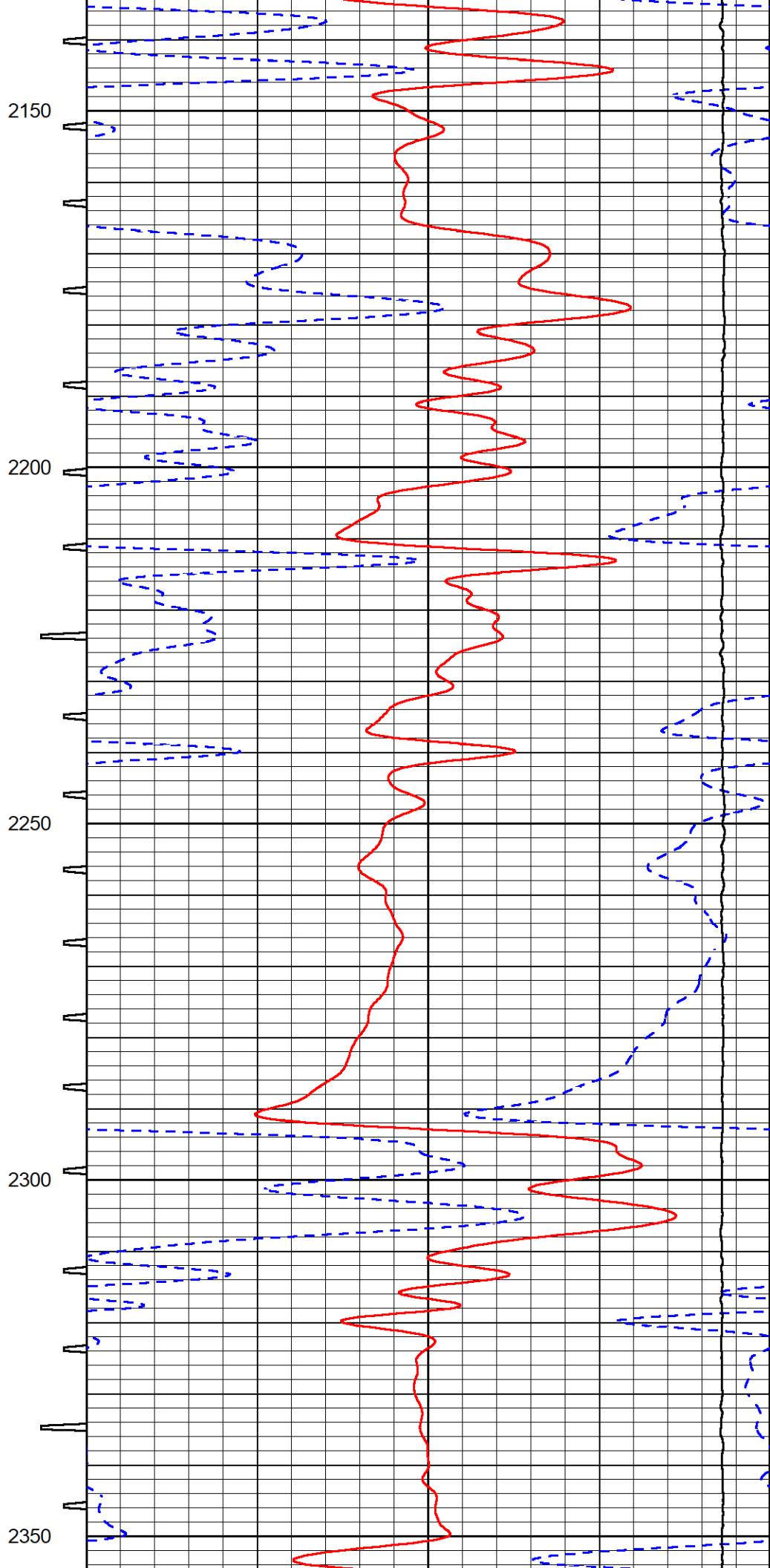
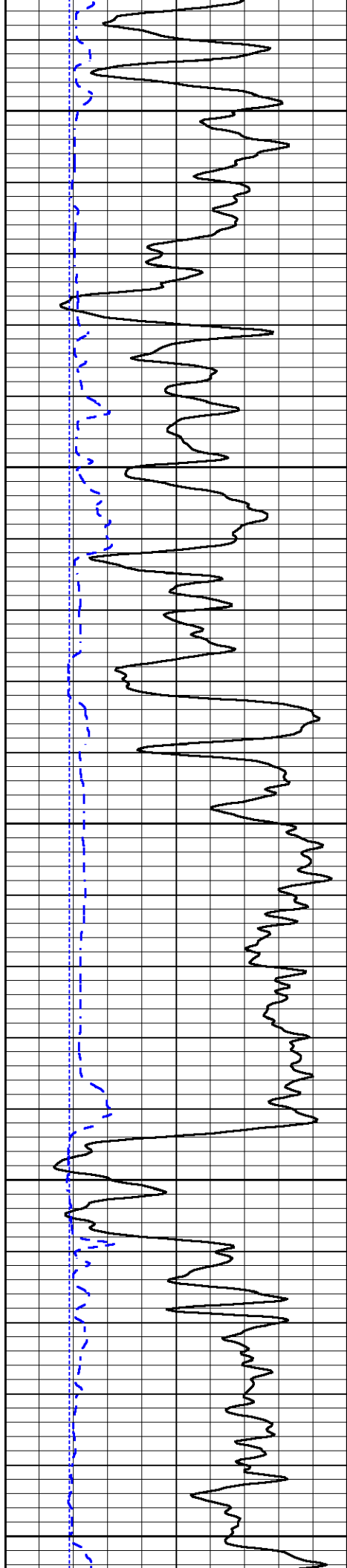


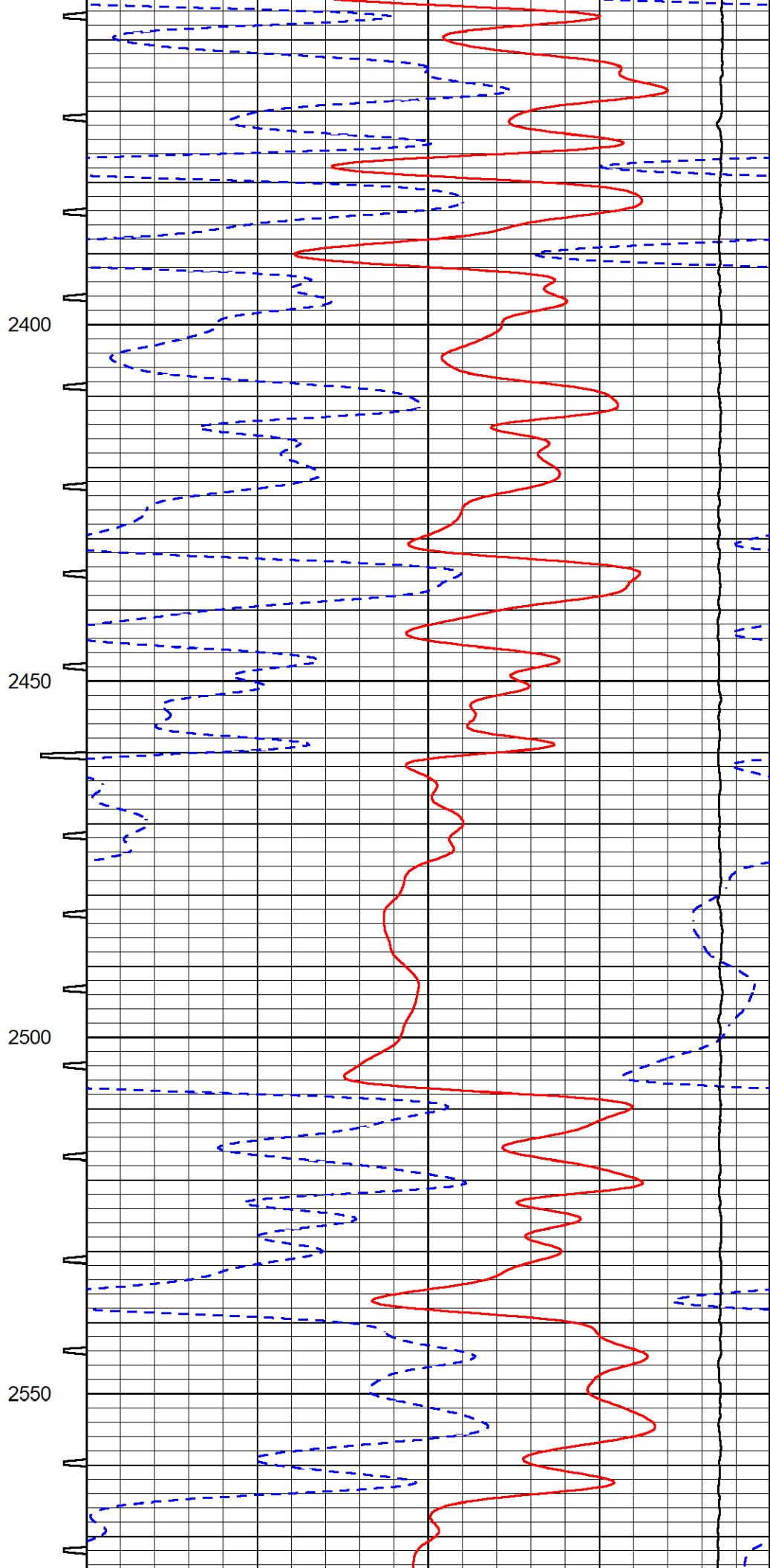
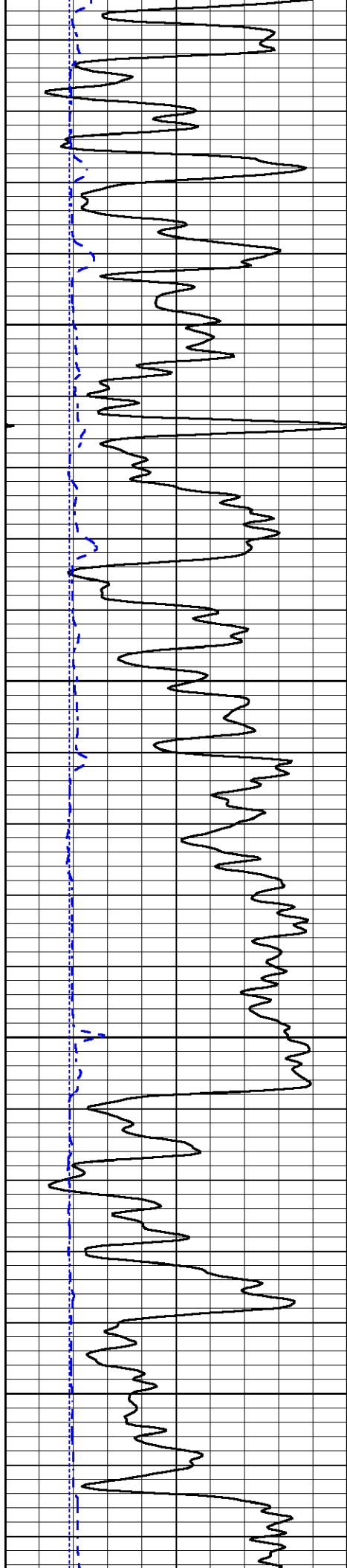


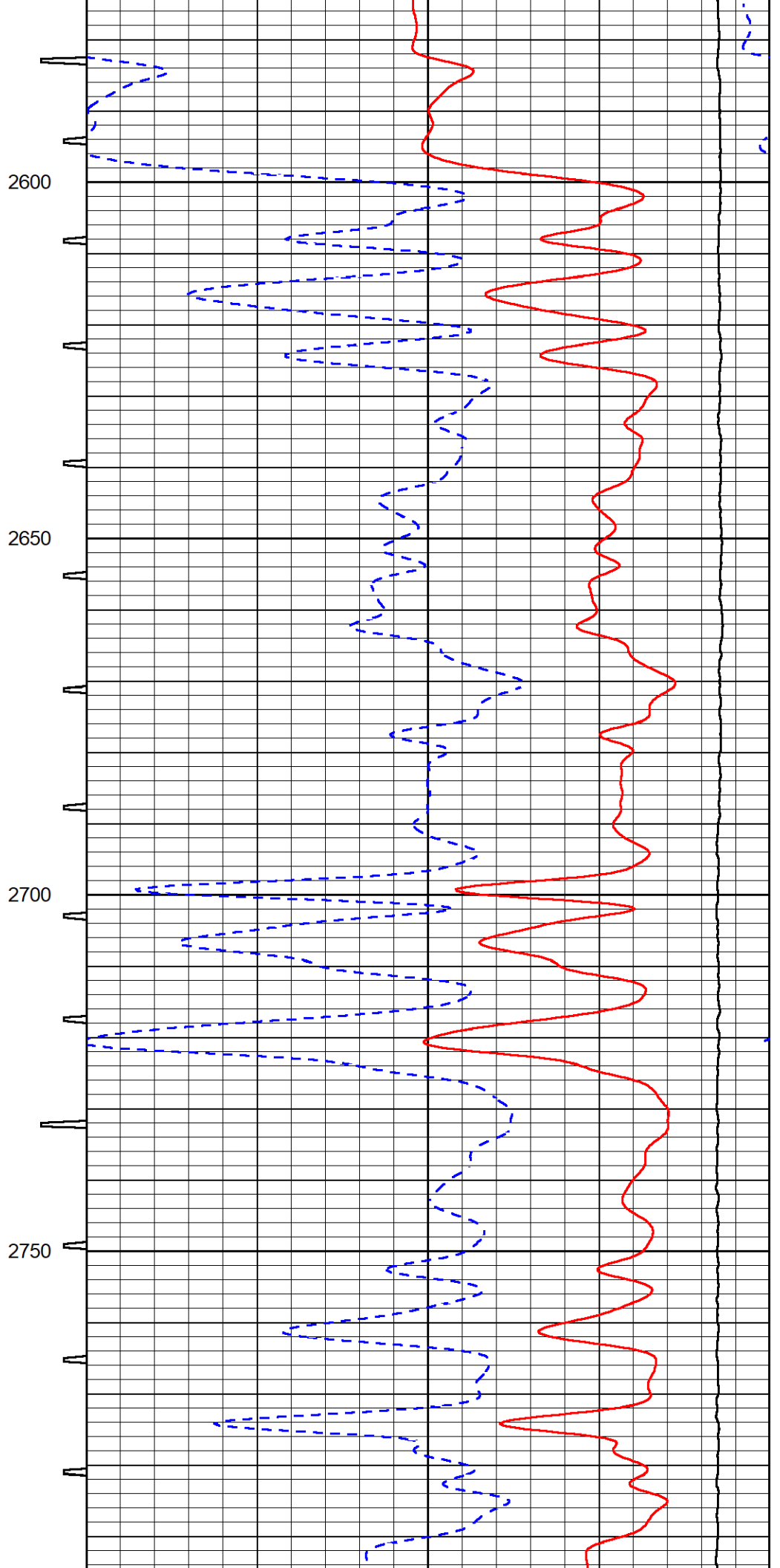
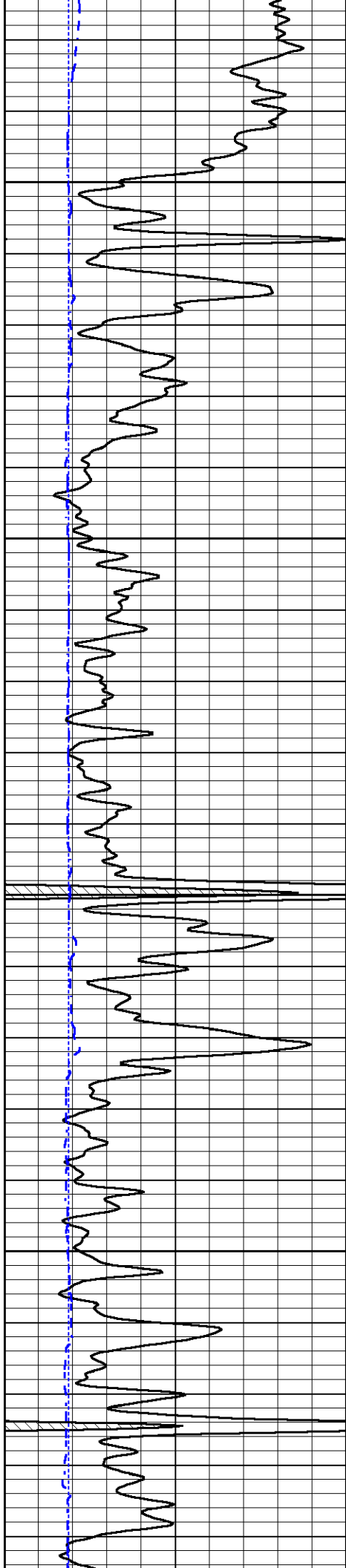


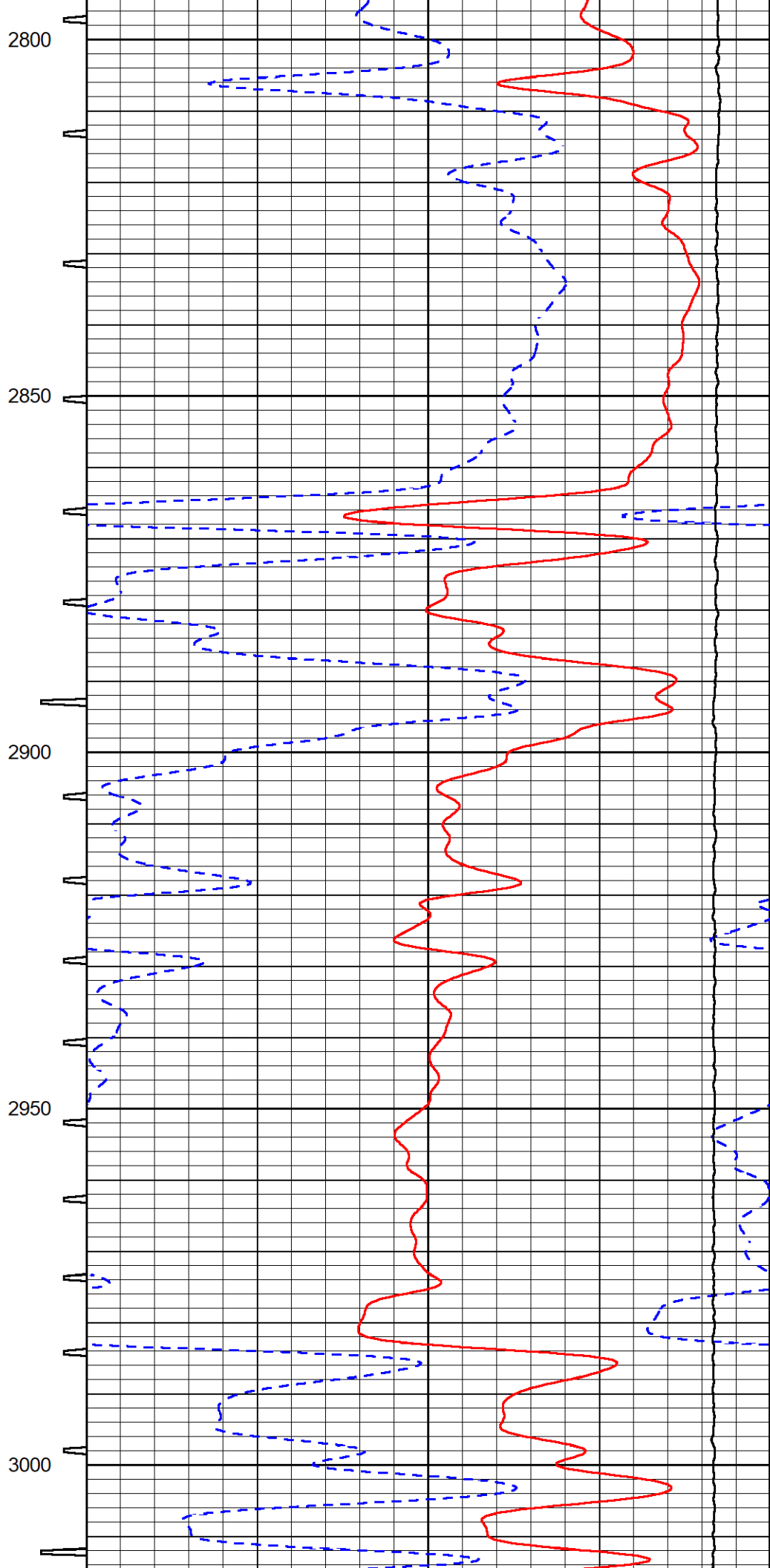
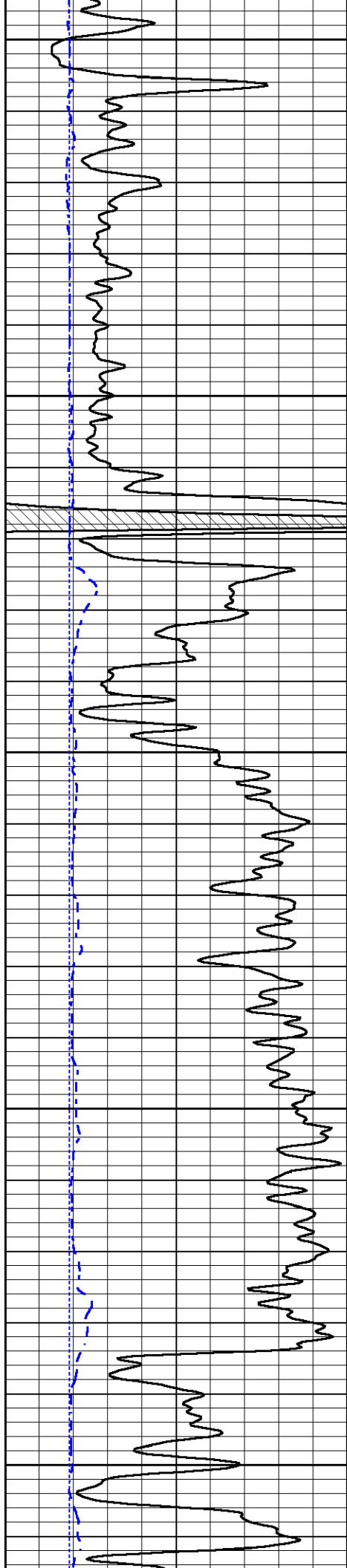


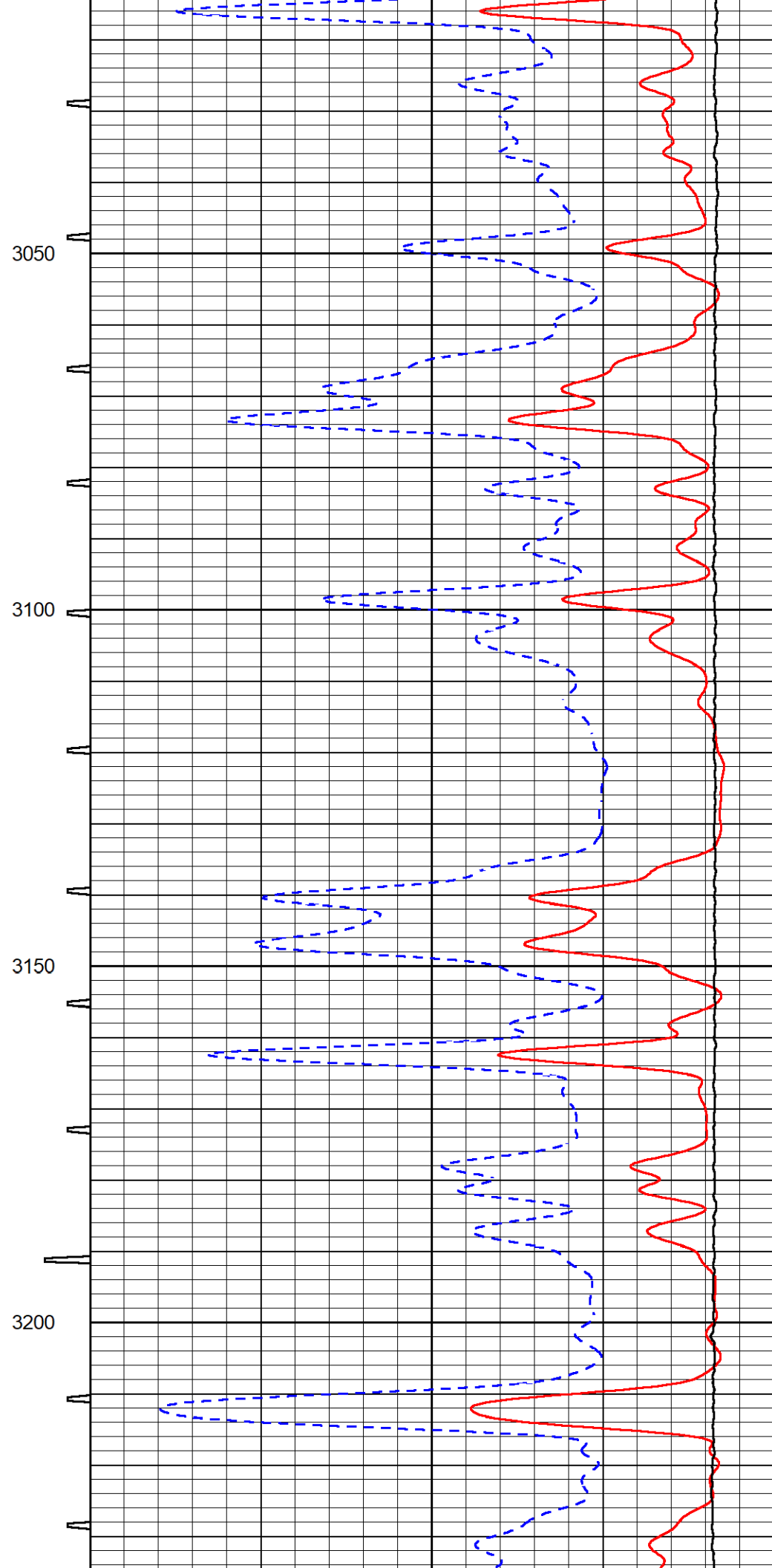
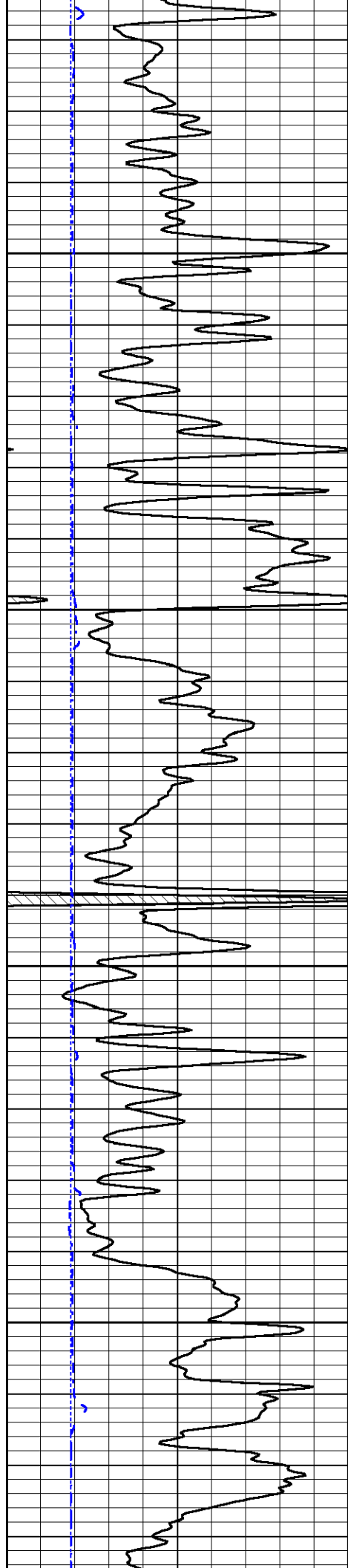


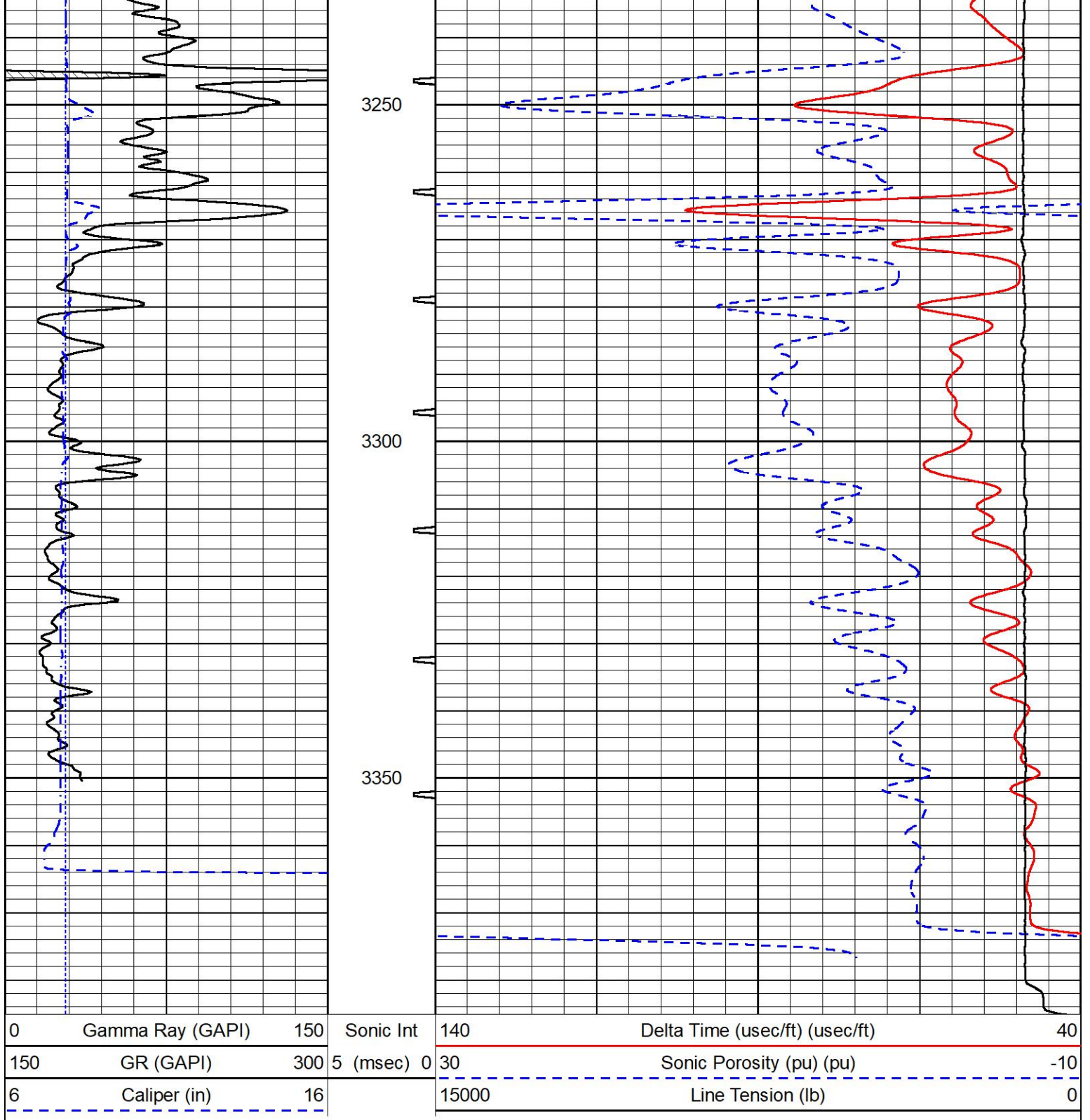












MIDWEST WIRELINE

## REPEAT SECTION

### REPEAT PASS

Database File rama\_bayer #6-29.db  
 Dataset Pathname Stack/pass2.1  
 Presentation Format \_sonic  
 Dataset Creation Mon Aug 07 22:16:49 2023  
 Charted by Depth in Feet scaled 1:240

0	Gamma Ray (GAPI)	150	Sonic Int	140	Delta Time (usec/ft) (usec/ft)	40
150	GR (GAPI)	300	5 (msec) 0	30	Sonic Porosity (pu) (pu)	-10

6

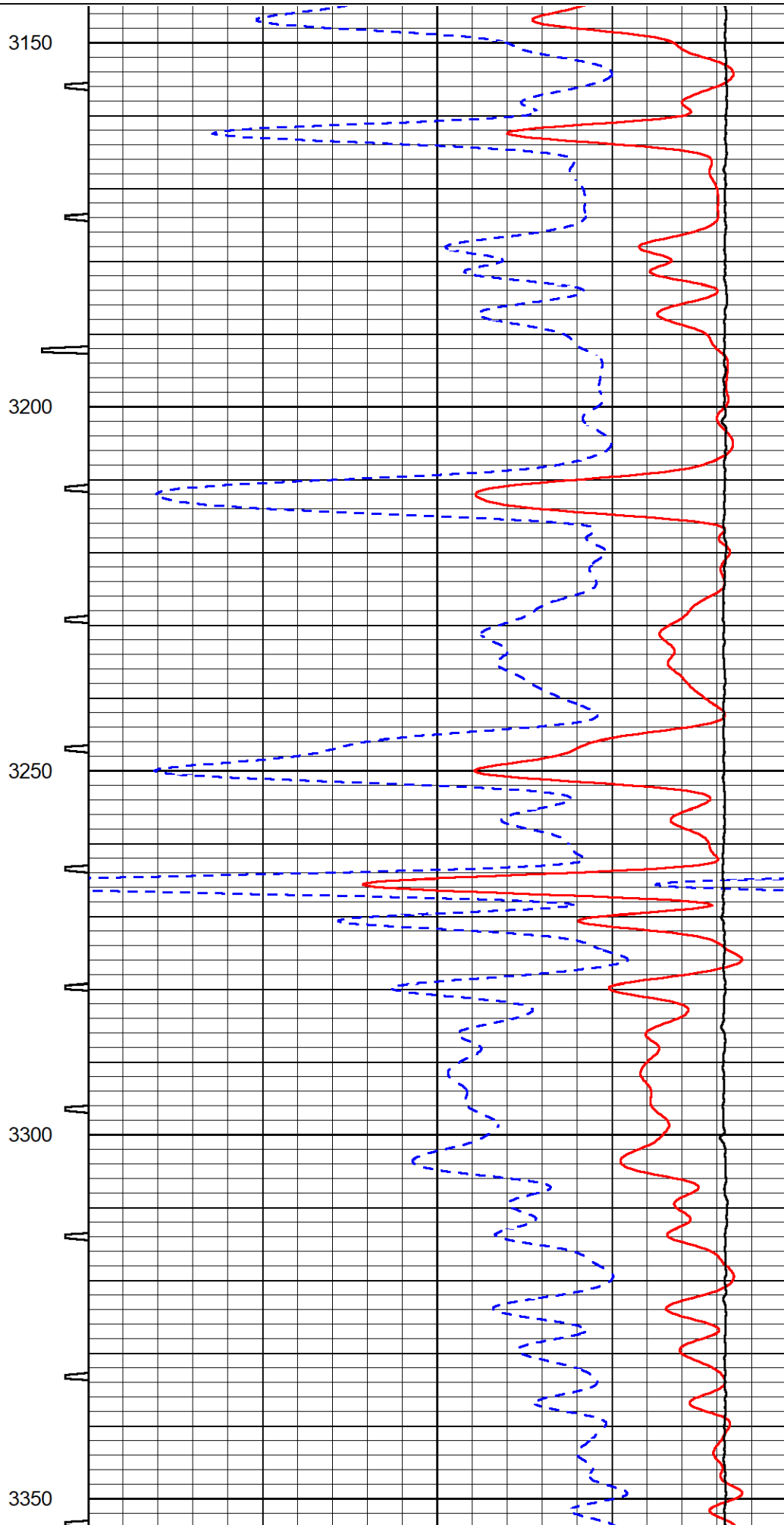
Caliper (in)

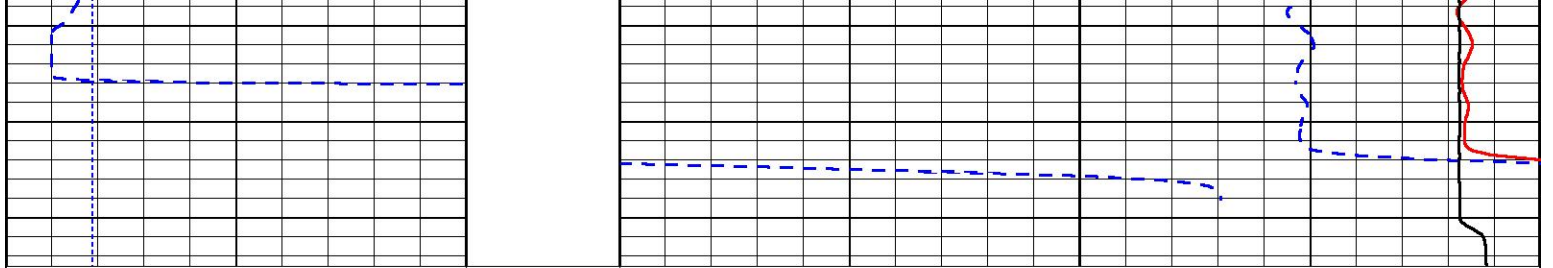
16

15000

Line Tension (lb)

0





0	Gamma Ray (GAPI)	150	Sonic Int	140	Delta Time (usec/ft) (usec/ft)	40
150	GR (GAPI)	300	5 (msec) 0	30	Sonic Porosity (pu) (pu)	-10
6	Caliper (in)	16		15000	Line Tension (lb)	0



MIDWEST WIRELINE

Company RAMA Operating Company, Inc.  
 Well Bayer #6-29  
 Field Chase-Silica  
 County Rice  
 State Kansas