



MIDWEST WIRELINE

MICRORESISTIVITY

Company RAMA Operating Company, Inc.
 Well Bayer #6-29
 Field Chase-Silica
 County Rice
 State Kansas

Company RAMA Operating Company, Inc.
 Well Bayer #6-29
 Field Chase-Silica
 County Rice State Kansas

Location: API #: 15-159-22891-00-00
 SE SW NW SW
 1381 FSL & 335 FWL
 SEC 29 TWP 19S RGE 10W
 Permanent Datum Ground Level Elevation 1785
 Log Measured From Kelly Bushing
 Drilling Measured From Kelly Bushing
 Other Services
 CNL/CDL
 DIL/BHCS
 Elevation
 K.B. 1796
 D.F.
 G.L. 1785

Date	8/7/2023
Run Number	Two
Depth Driller	3380
Depth Logger	3380
Bottom Logged Interval	3379
Top Log Interval	1300
Casing Driller	8.625 @ 348
Casing Logger	346
Bit Size	7.875
Type Fluid in Hole	Chemical
Salinity, ppm CL	4000
Density / Viscosity	9.3 59
pH / Fluid Loss	11.5 7.6
Source of Sample	Flowline
Rm @ Meas. Temp	0.75 @ 72
Rmt @ Meas. Temp	0.56 @ 72
Rmc @ Meas. Temp	1.01 @ 72
Source of Rmf / Rmc	Charts
Rm @ BHT	0.49 @ 110
Operating Rig Time	4 Hours
Max Rec. Temp. F	110
Equipment Number	P-24
Location	Hays
Recorded By	T. Martin
Witnessed By	Josh Austin

<<< Fold Here >>>

All interpretations are opinions based on inferences from electrical or other measurements and Midwest Wireline LLC cannot and does not guarantee the accuracy or correctness of any interpretation, and Midwest Wireline LLC will not be liable or responsible for any loss, costs, damages, or expenses incurred or sustained by anyone resulting from any interpretation made by any of our officers, agents or employees.

Comments

N/A DENOTES NOT AVAILABLE OR NON-APPLICABLE.

Ellinwood, KS, E to Silica(2nd Rd),
 1.25 N, E into

Log Measured From: Kelly Bushing 11 Ft. Above Permanent Datum

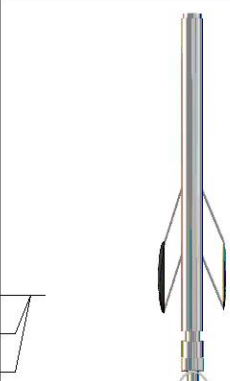
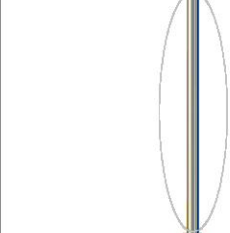
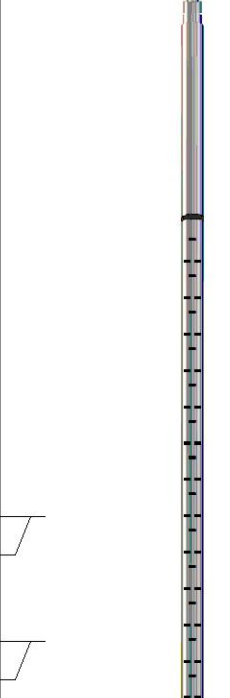
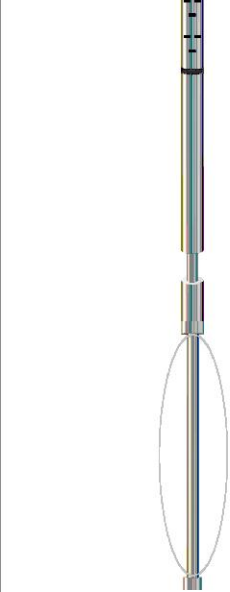
THANK YOU FOR USING MIDWEST WIRELINE LLC
 785-625-3858

Your Midwest Wireline Crew

Engineer: T. Martin
 Operator:
 Operator:
 Operator:

This Log Record Was Witnessed By

Primary Witness: Josh Austin
 Secondary Witness:
 Secondary Witness:
 Secondary Witness:

Sensor	Offset (ft)	Schematic	Description	Length (ft)	O.D. (in)	Weight (lb)
MCAL MI MN	25.50 25.50 25.50		ML-Pengo (Pengo1)	5.50	3.50	100.00
			CENT-PENGO (4-PENGO)	4.25	3.00	70.00
WVF4 WVF1	12.25 12.25		SLT-PENGO (601) 3 1/2 BHC Sonic	16.00	3.50	300.00
WVF3 WVF2	10.25 10.25		CENT-PENGO (3-PENGO)	4.25	3.00	70.00

Dataset: rama_bayer #6-29.db: field/well/SonMel/pass3
 Total length: 30.00 ft
 Total weight: 540.00 lb
 O.D.: 3.50 in

Log Variables

DatabaseC:\ProgramData\Warrior\Data\rama_bayer #6-29.db
 Dataset field/well/Stack/pass3.1/_vars_

Top - Bottom

BOREID in 7.875	BOTTEMP degF 110	CASEOD in 5.5	CASETHCK in 0	FLUIDDEN g/cc 1	MATRXDEN g/cc 2.71	NPORSEL Limestone	PERFS No
SNDERR mmho/m 2	SNDERRM mmho/m 0	SPSHIFT mV 580	SRFTEMP degF 80	SZCOR Off	TDEPTH ft 3380		

Variable Description

BOREID : Borehole I.D.
 BOTTEMP : Bottom Hole Temperature
 CASEOD : Casing O.D.
 CASETHCK : Casing Thickness
 FLUIDDEN : Fluid Density
 MATRXDEN : Matrix Density
 NPORSEL : Neutron Porosity Curve Select

PERFS : Perforation Flag
 SNDERR : Deep Sonde Error Correction
 SNDERRM : Medium Sonde Error Correction
 SPSHIFT : S.P. Baseline Offset
 SRFTEMP : Surface Temperature
 SZCOR : CN Size Cor. ?
 TDEPTH : Total Depth



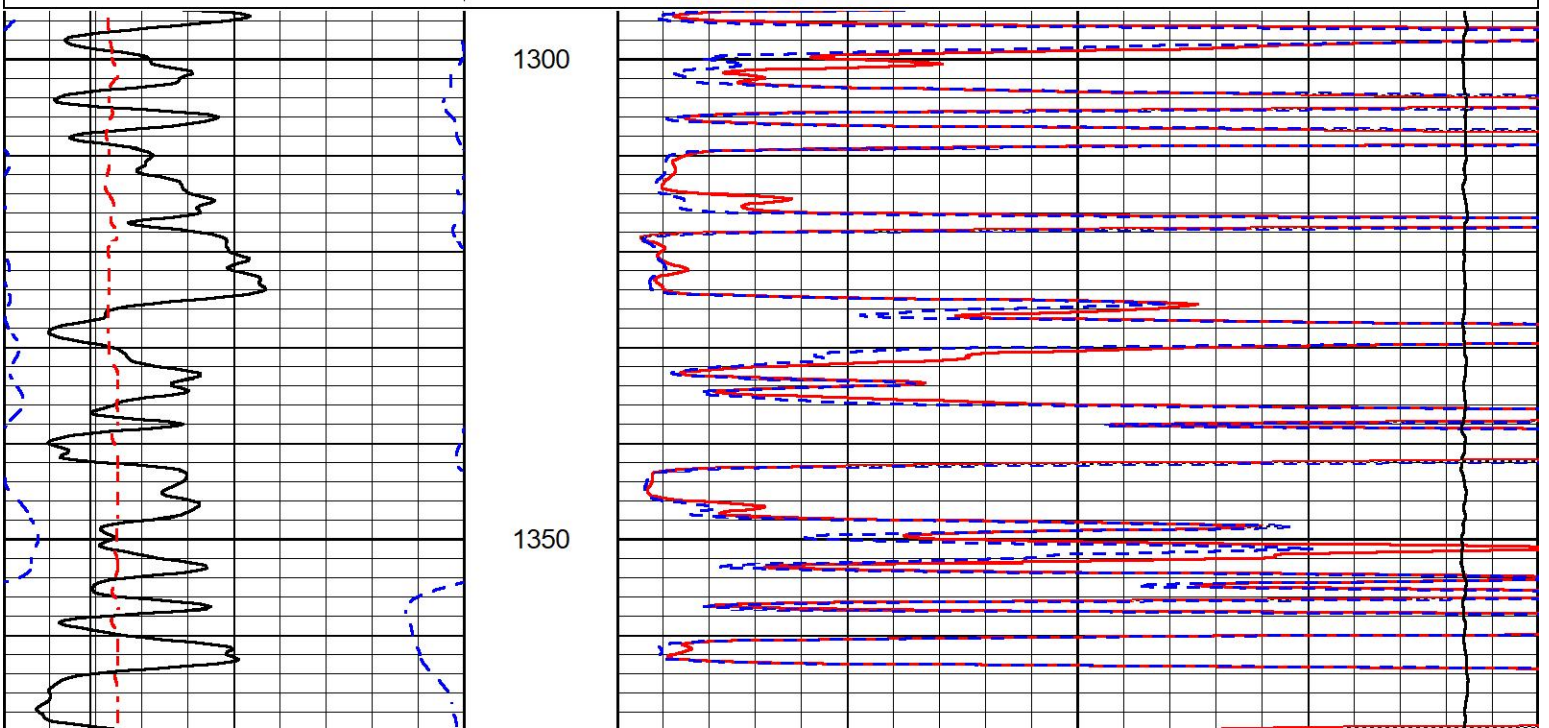
DETAIL SECTION

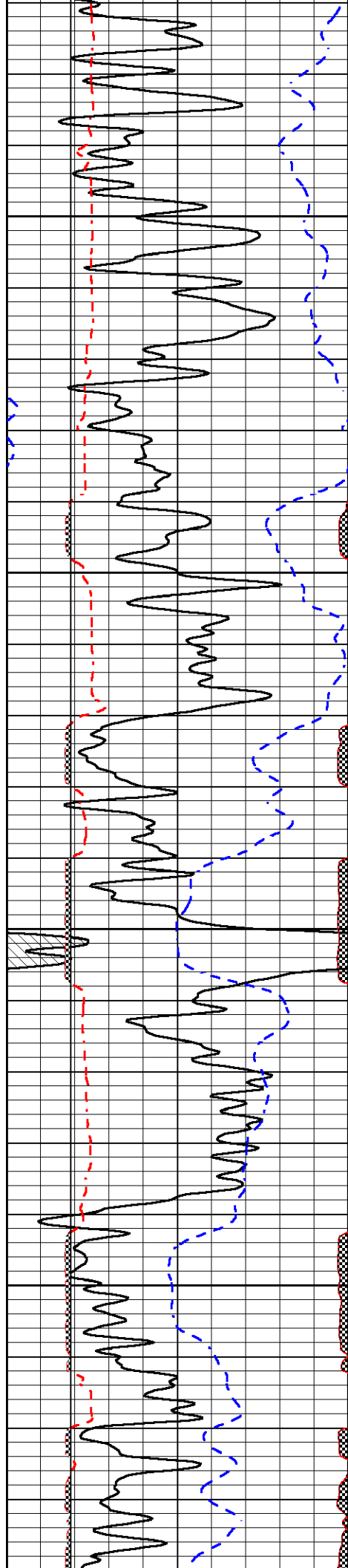
MAIN PASS

Database File rama_bayer #6-29.db
 Dataset Pathname Stack/pass3.1
 Presentation Format _micro
 Dataset Creation Mon Aug 07 22:59:49 2023
 Charted by Depth in Feet scaled 1:240

0	Gamma Ray (GAPI)	150
6	Caliper (in)	16
2.875	mcal (in)	7.875
-200	sp (mV)	0

0	Micro Inverse 1 X 1 (Ohm-m)	40
0	Micro Normal 2" (Ohm-m)	40
10000	Line Weight (lb)	0



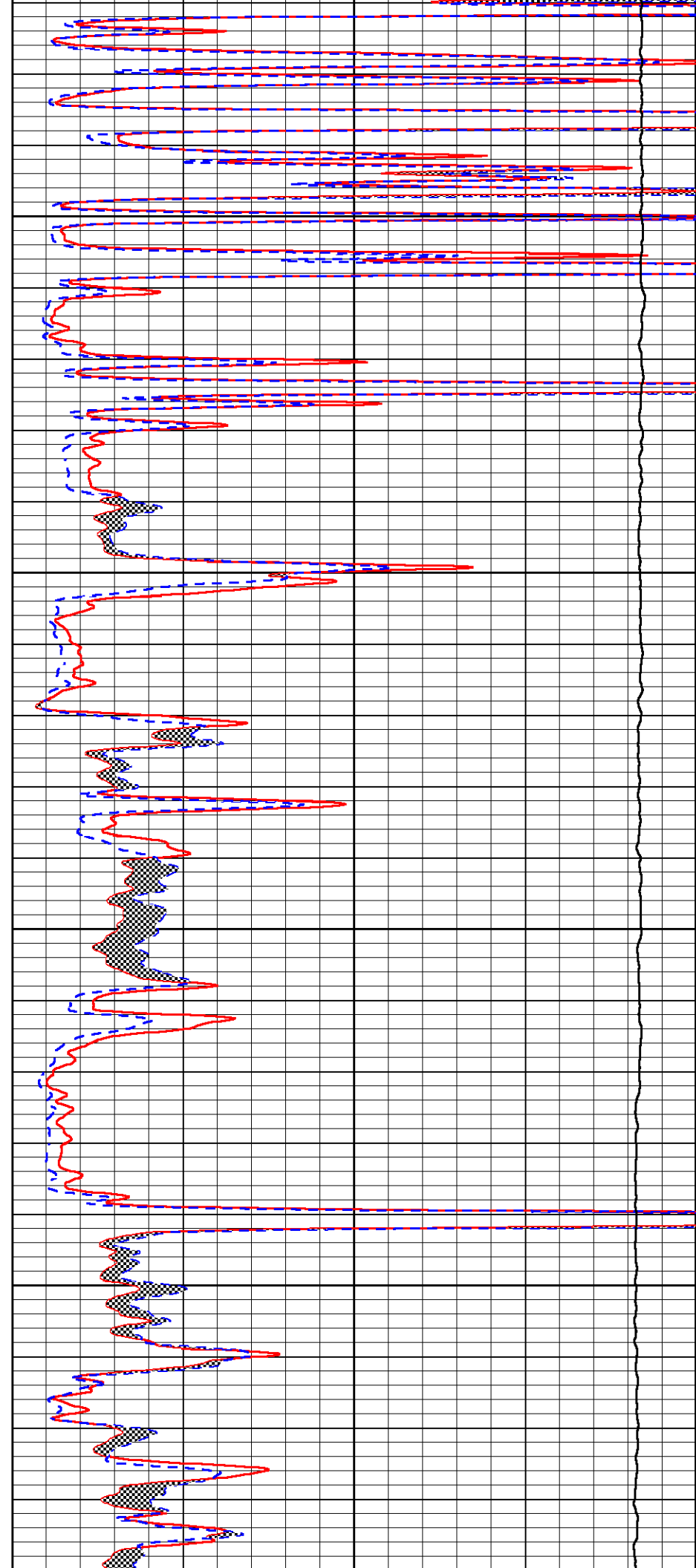


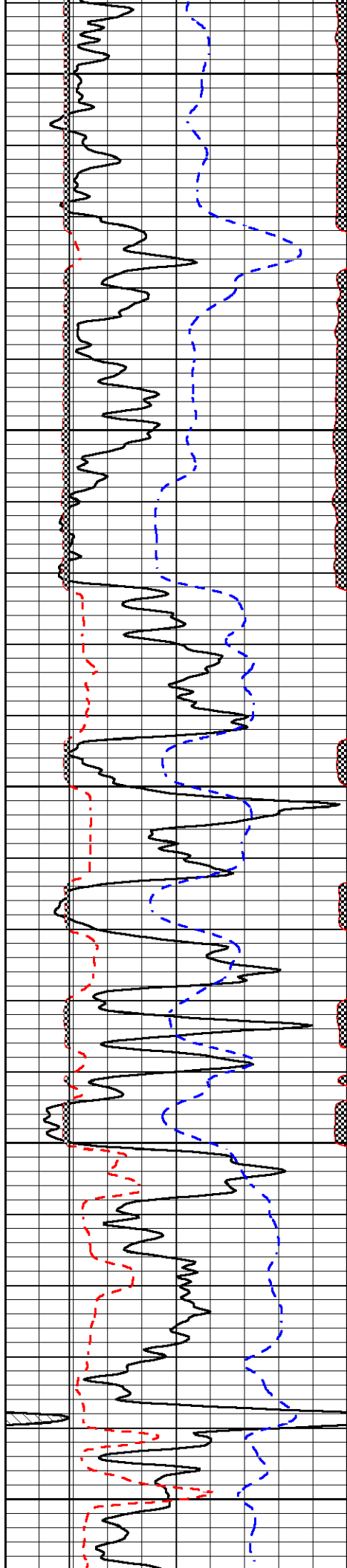
1400

1450

1500

1550





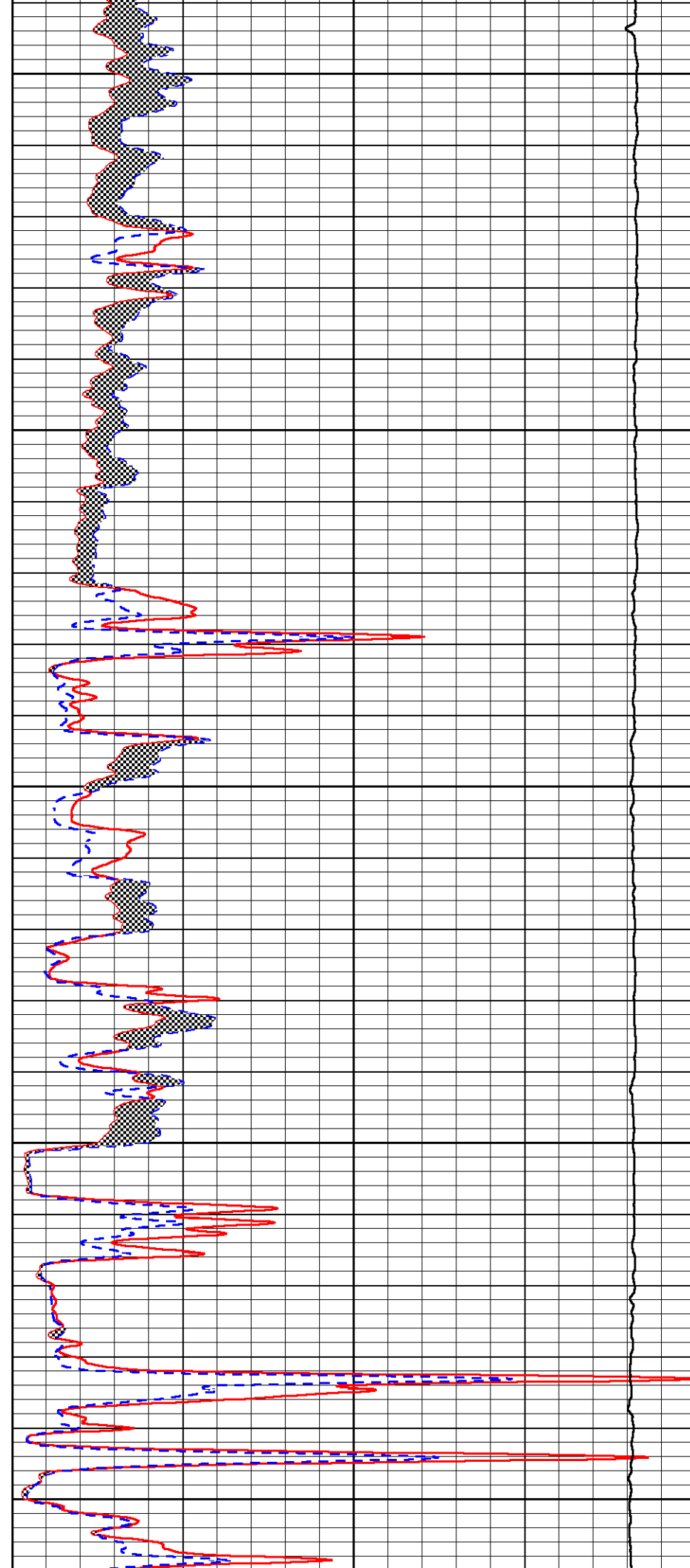
1600

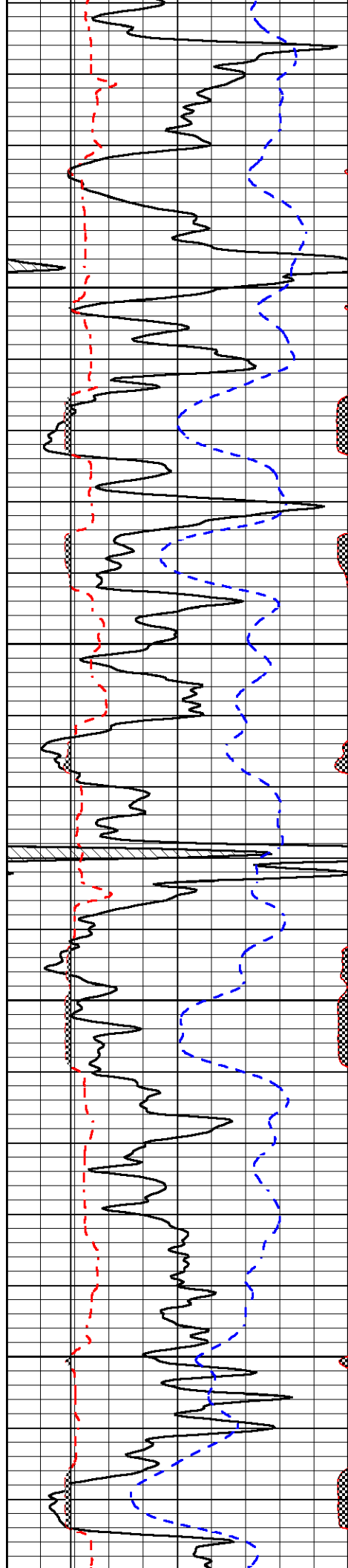
1650

1700

1750

1800



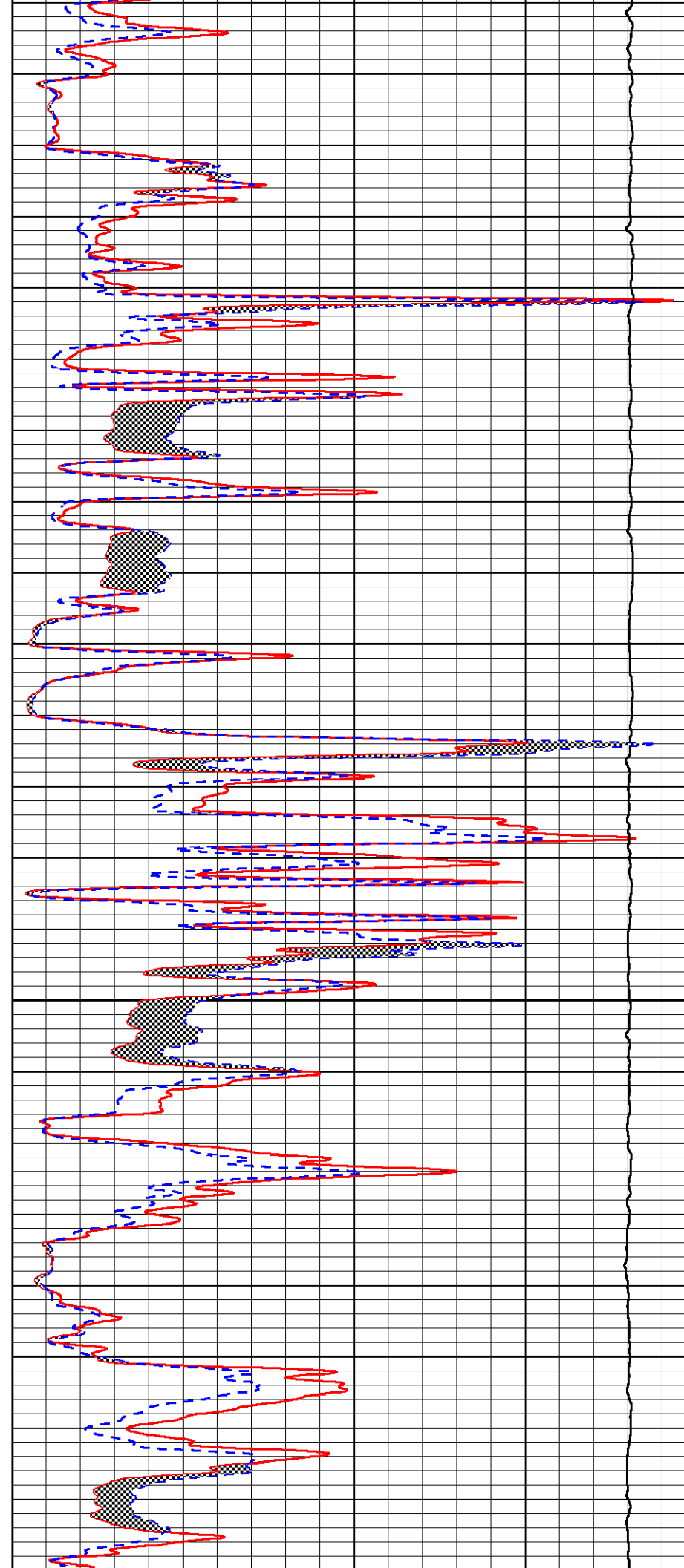


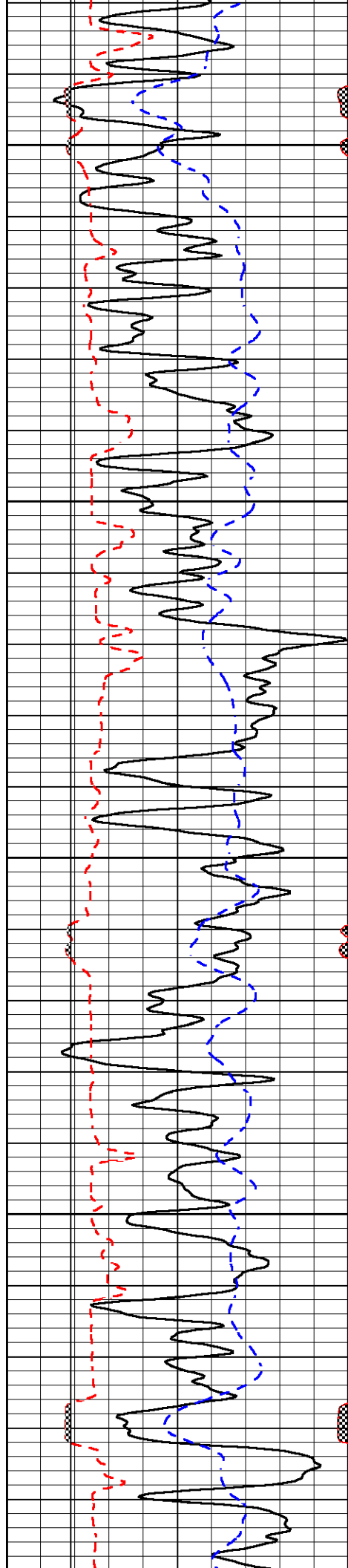
1850

1900

1950

2000





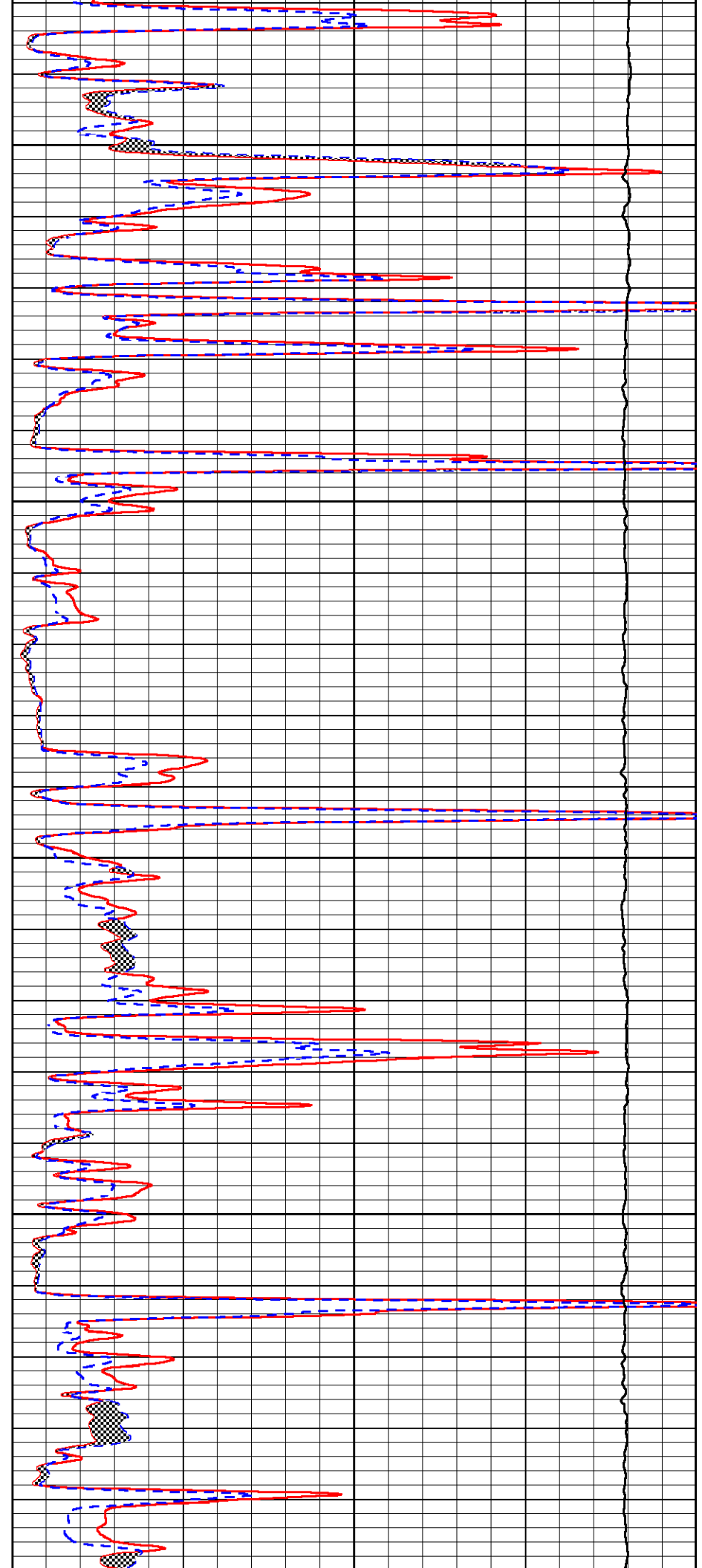
2050

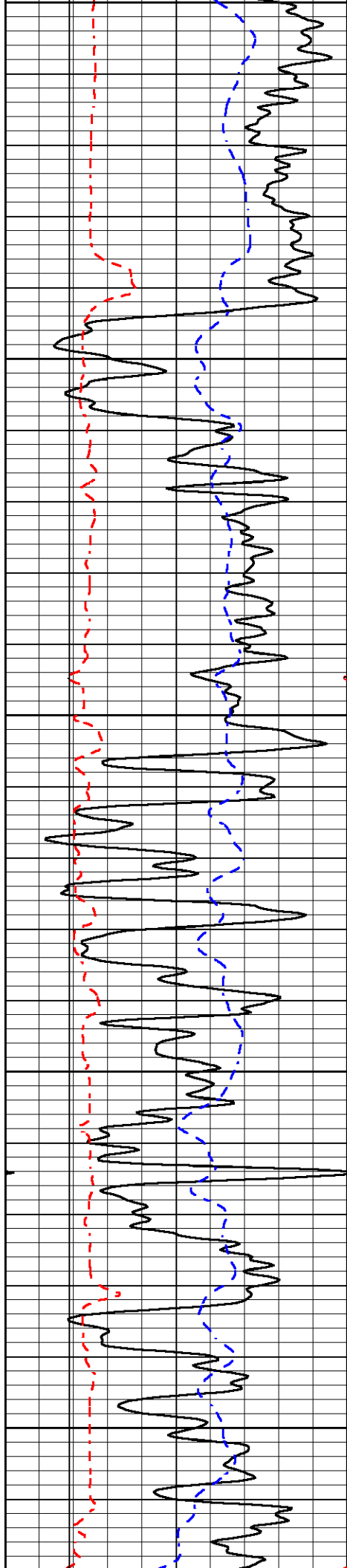
2100

2150

2200

2250





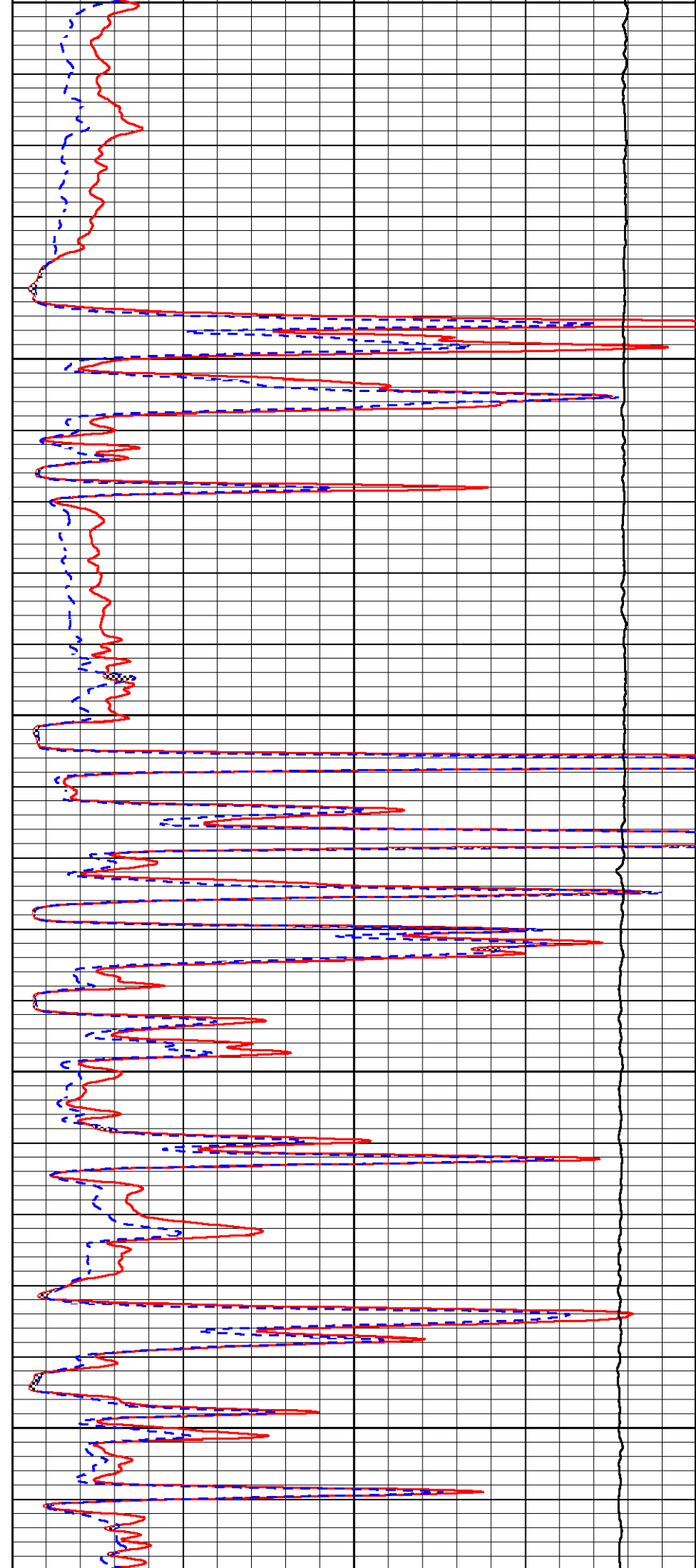
2250

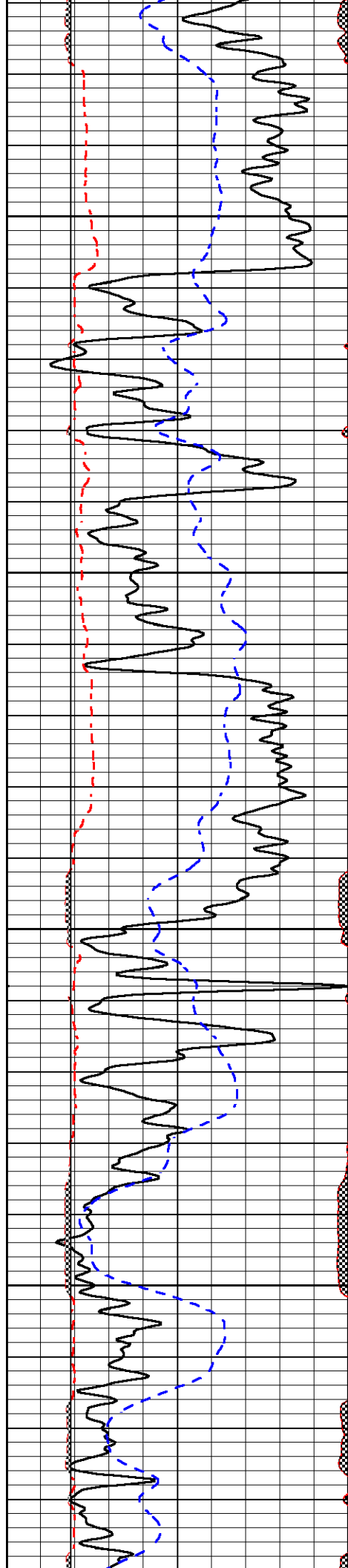
2300

2350

2400

2450



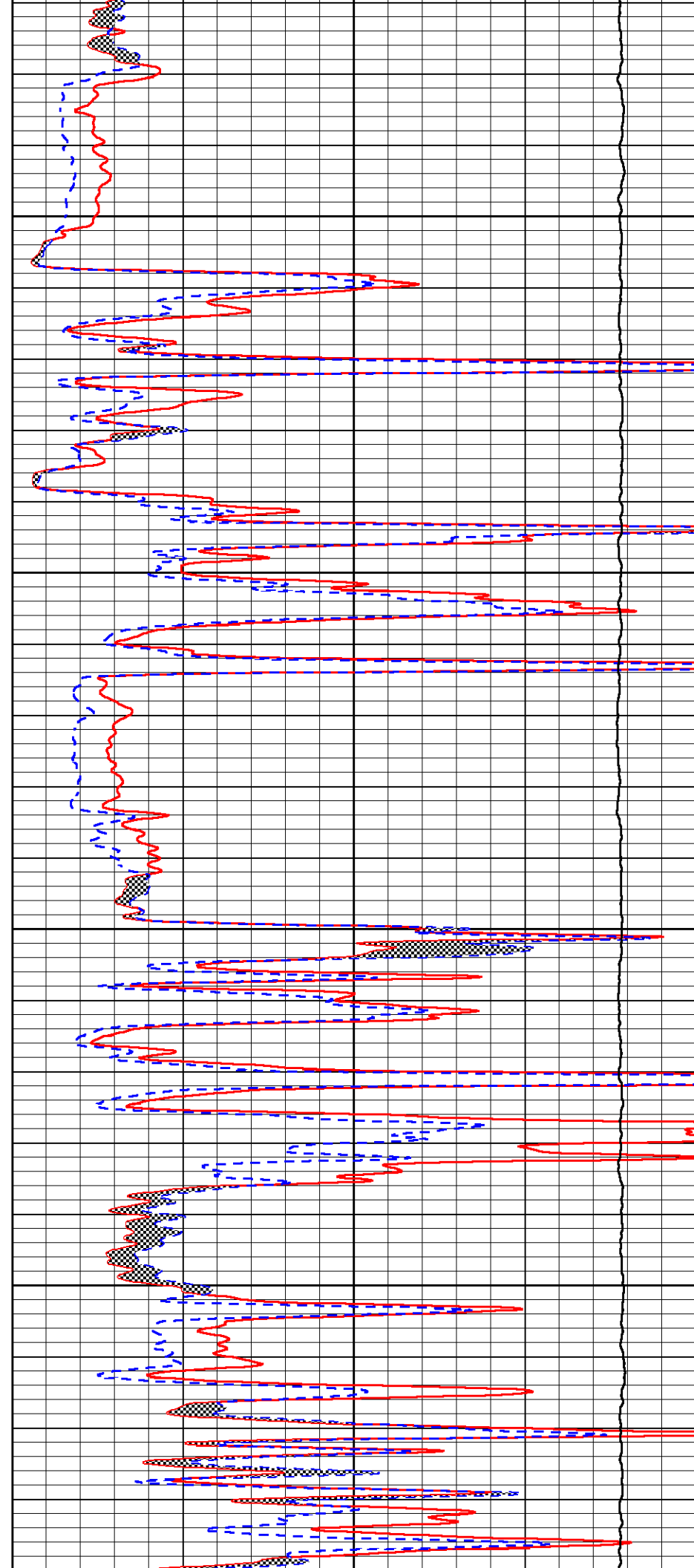


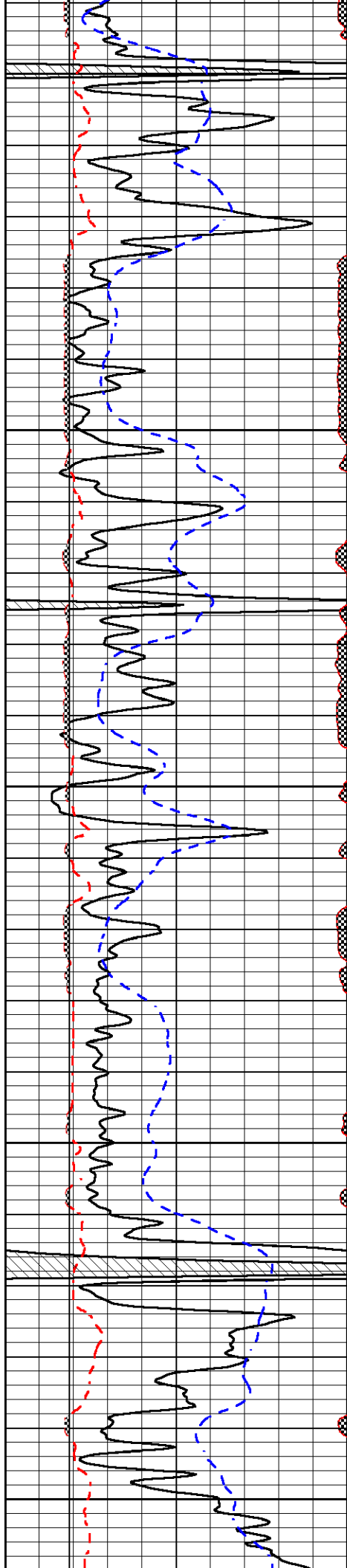
2500

2550

2600

2650





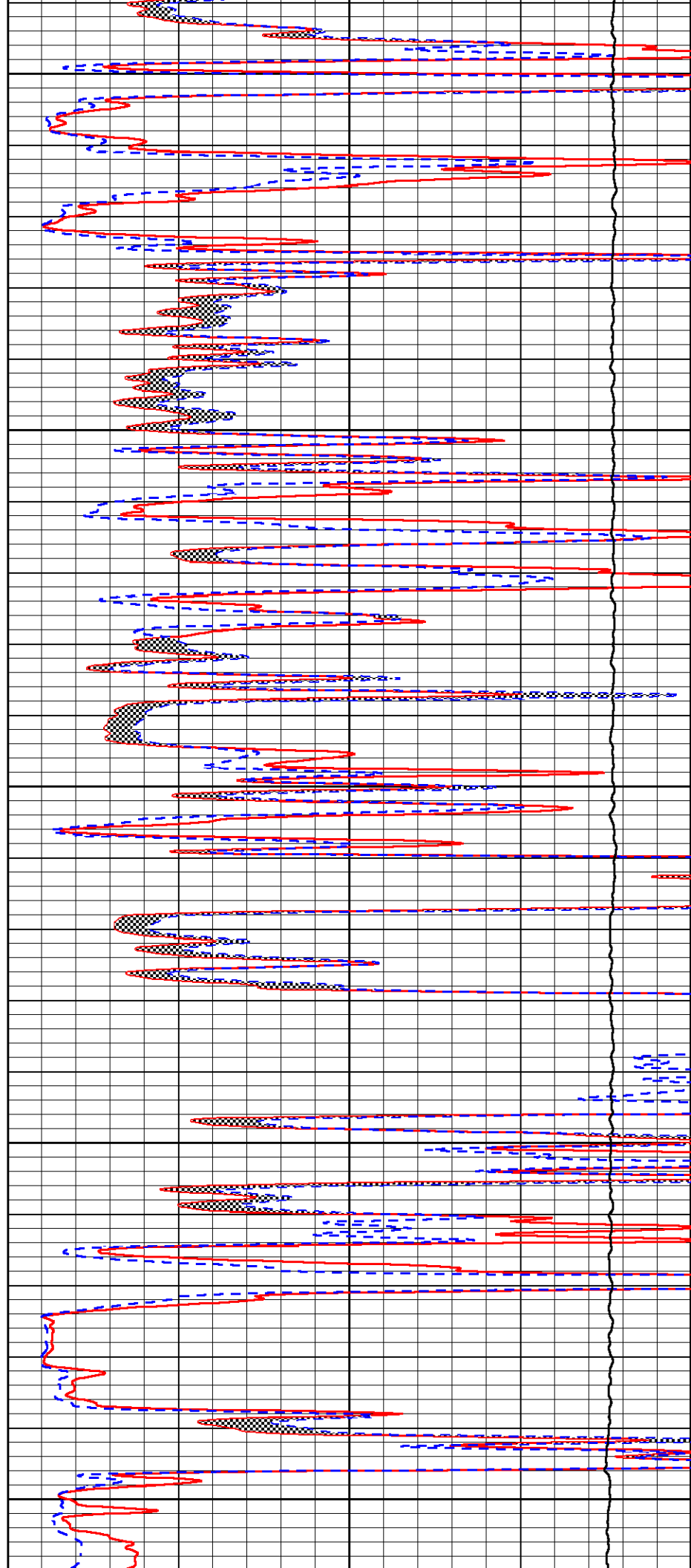
2700

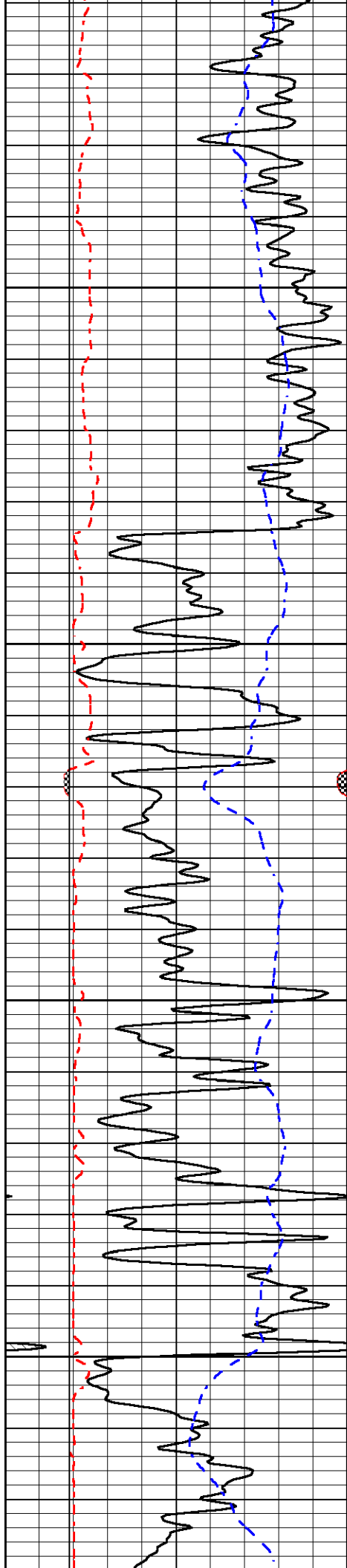
2750

2800

2850

2900



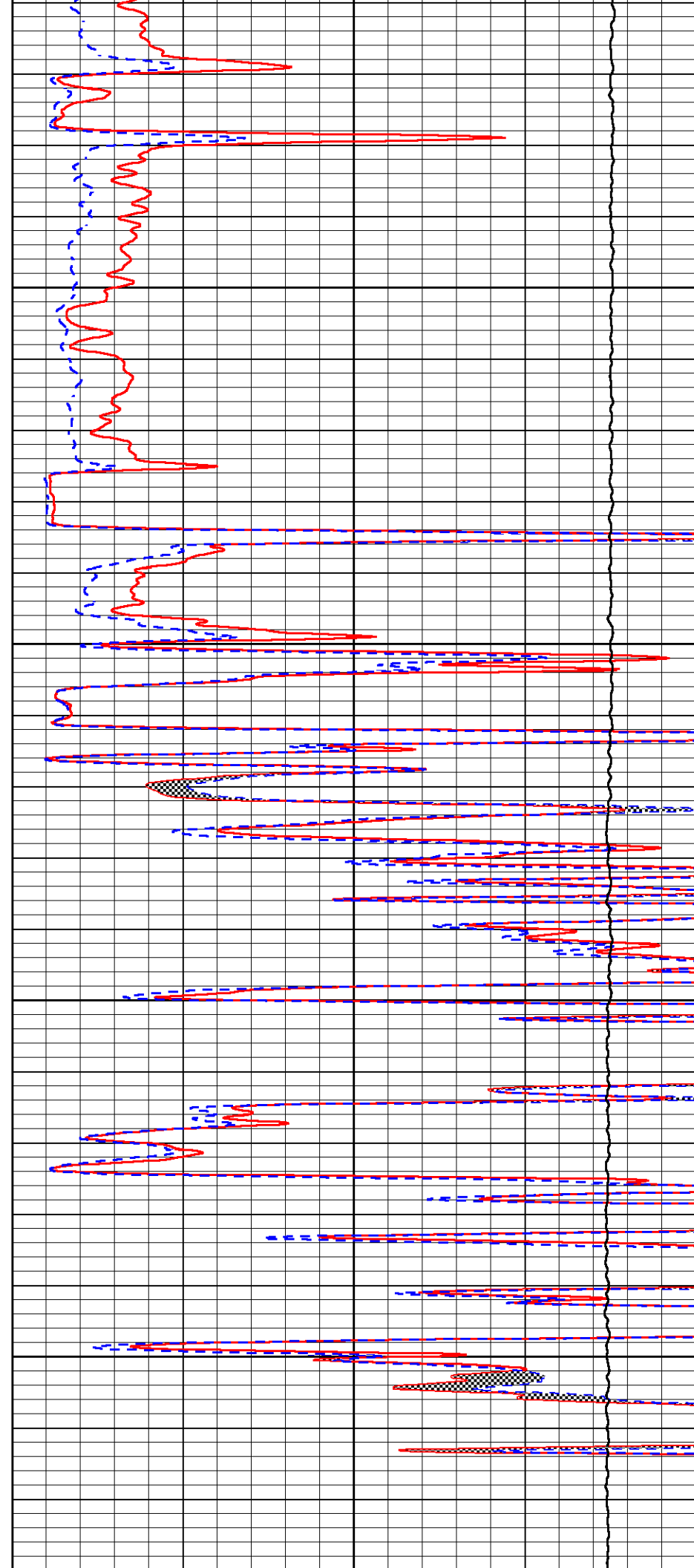


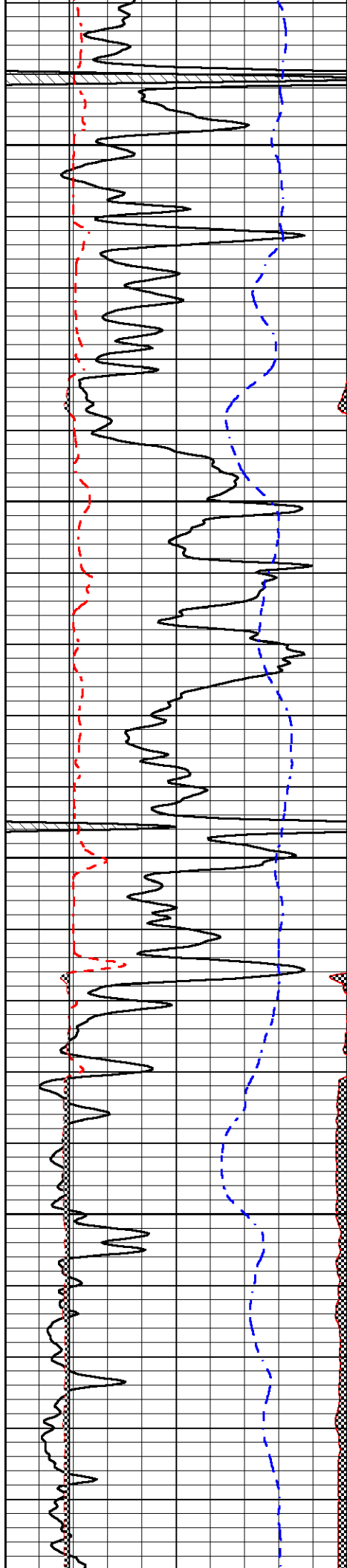
2950

3000

3050

3100





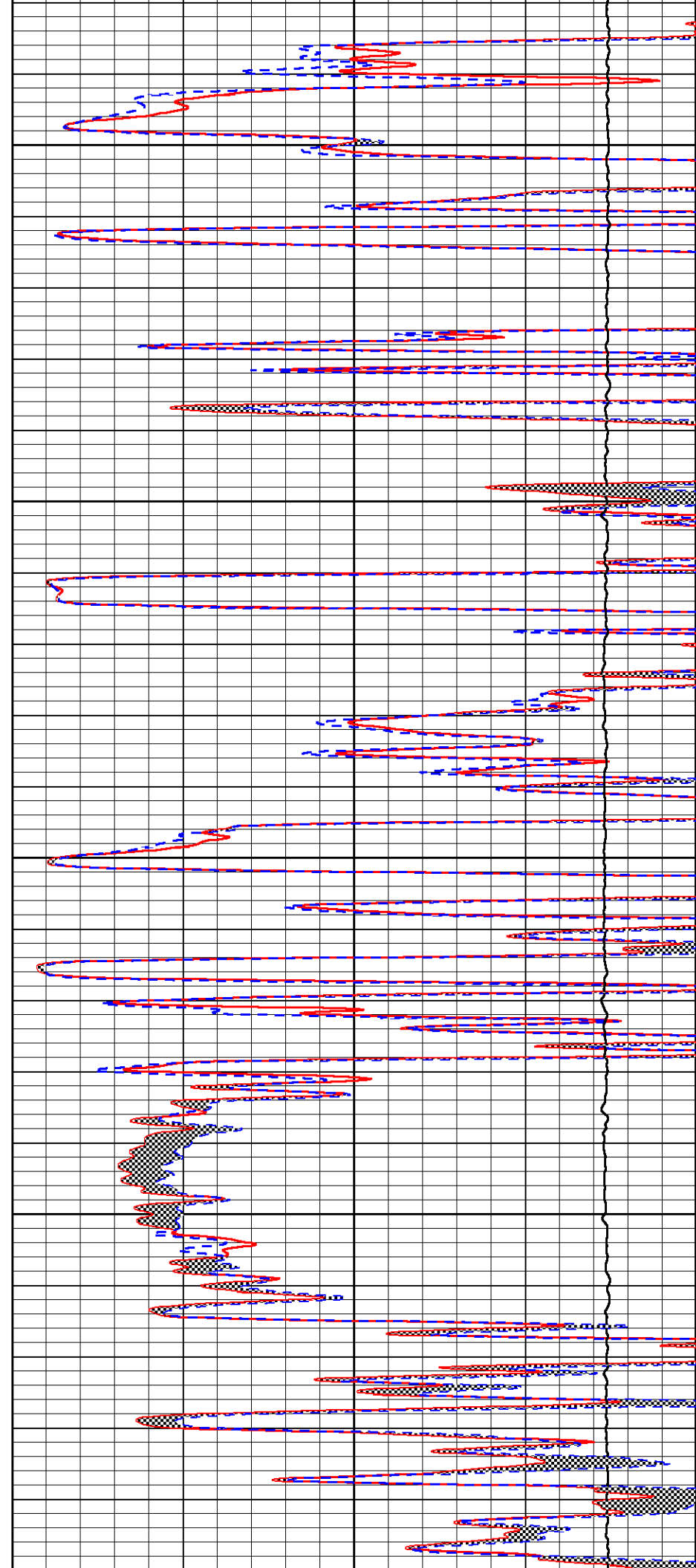
3150

3200

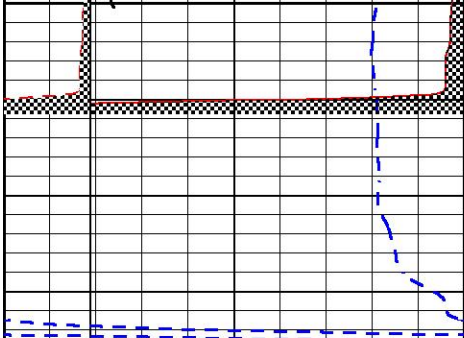
3250

3300

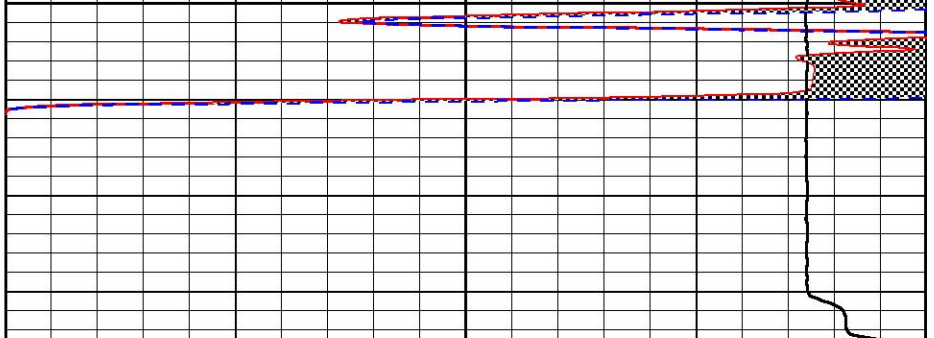
3350



3350



0	Gamma Ray (GAPI)	150
6	Caliper (in)	16
2.875	mcal (in)	7.875
-200	sp (mV)	0



0	Micro Inverse 1 X 1 (Ohm-m)	40
0	Micro Normal 2" (Ohm-m)	40
10000	Line Weight (lb)	0



MIDWEST WIRELINE

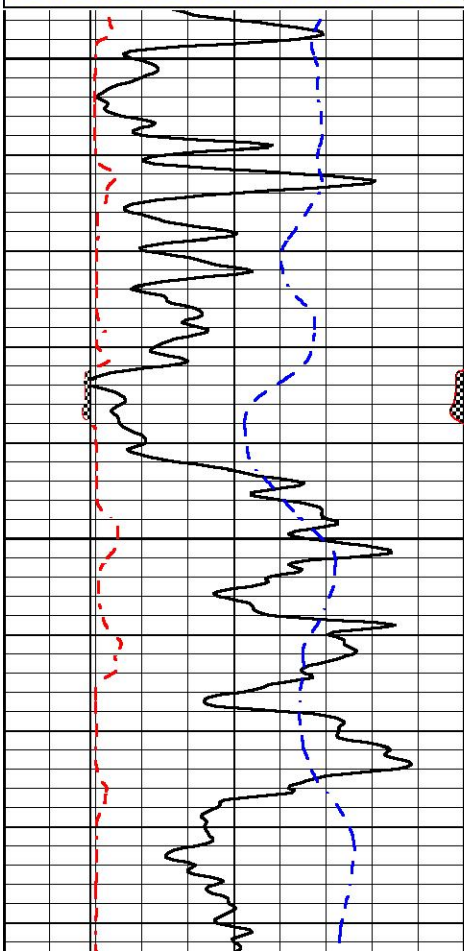
REPEAT SECTION

REPEAT PASS

Database File rama_bayer #6-29.db
 Dataset Pathname Stack/pass2.1
 Presentation Format _micro
 Dataset Creation Mon Aug 07 22:16:49 2023
 Charted by Depth in Feet scaled 1:240

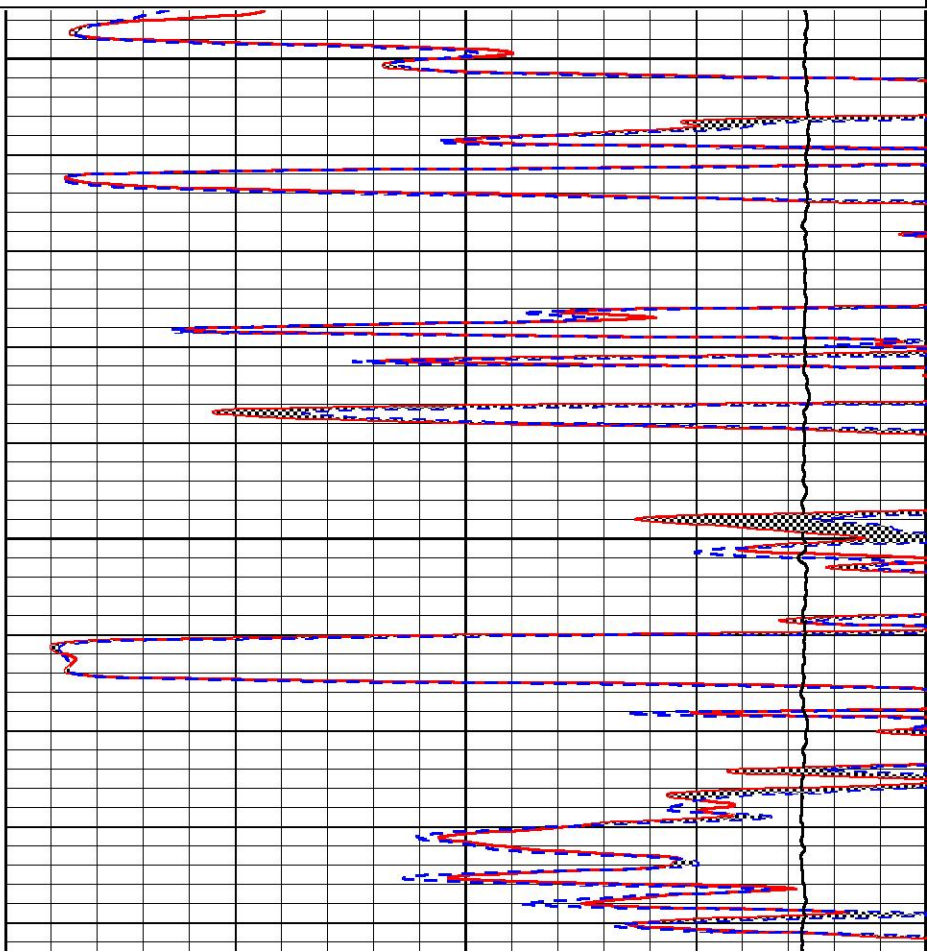
0	Gamma Ray (GAPI)	150
6	Caliper (in)	16
2.875	mcal (in)	7.875
-200	sp (mV)	0

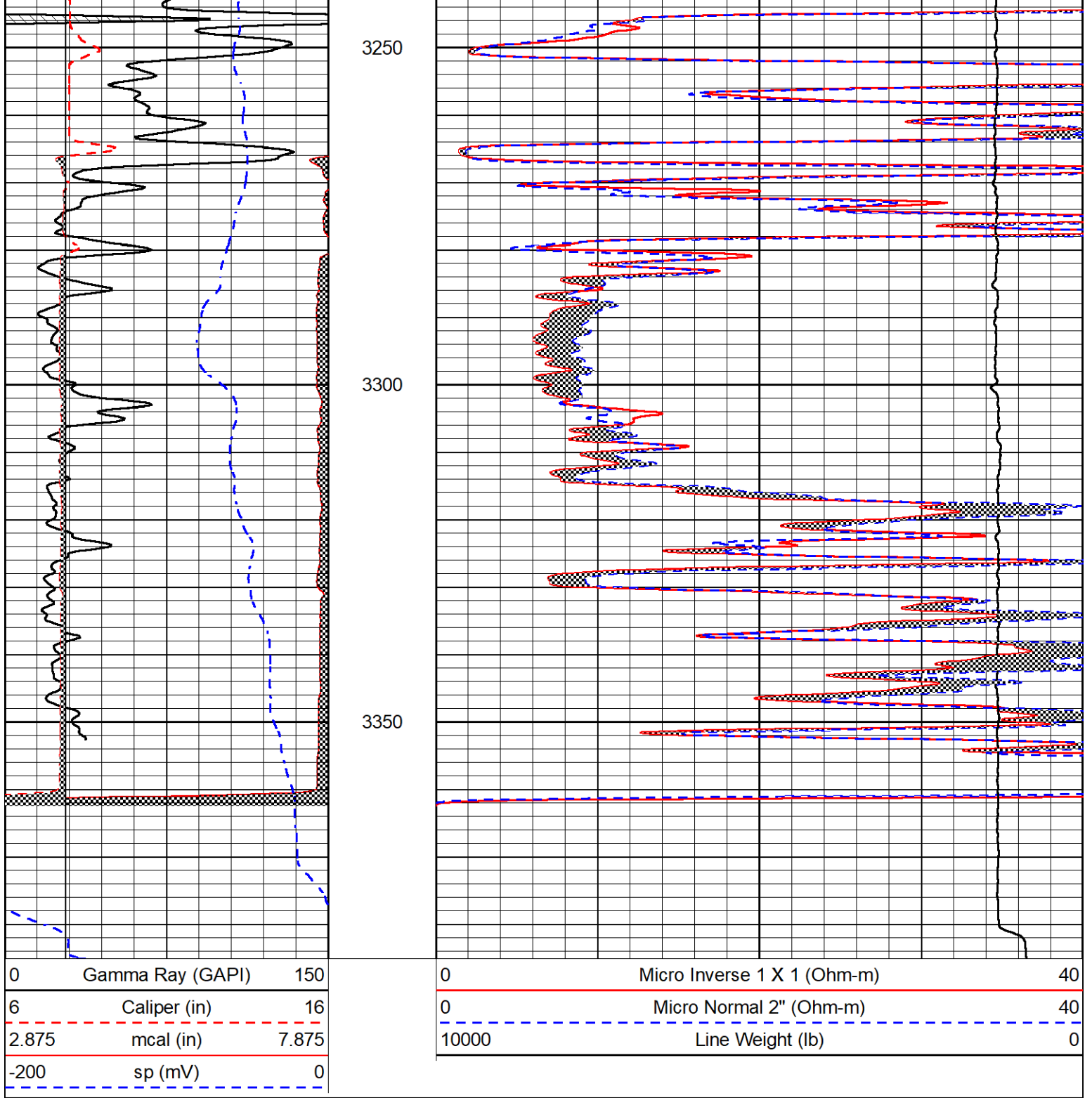
0	Micro Inverse 1 X 1 (Ohm-m)	40
0	Micro Normal 2" (Ohm-m)	40
10000	Line Weight (lb)	0



3150

3200





Calibration Report

Database File rama_bayer #6-29.db
 Dataset Pathname SonMel/pass3.6
 Dataset Creation Tue Aug 08 00:42:13 2023

Microlog Calibration Report

Serial-Model: Pengo1-Pengo
 Performed: Sun Jul 23 10:11:21 2023

	Readings			References			Results	
	Zero	Cal		Zero	Cal		m	b
Normal	-0.0394	0.4595	V	0.0000	10.0000	Ohm-m	18.5000	-0.2500
Inverse	0.0179	0.4655	V	0.0000	10.0000	Ohm-m	14.0000	0.0000

Inverse	0.0175	0.4033	V	0.0000	10.0000	0.0000	14.0000	0.0000
Caliper	-0.0023	0.0718	V	5.5000	18.5000	in	1.9000	2.2300



MIDWEST WIRELINE

Company	RAMA Operating Company, Inc.
Well	Bayer #6-29
Field	Chase-Silica
County	Rice
State	Kansas