



MICROLOG

Company VAL ENERGY INC
 Well J.O. # 4-35
 Field ALBRIGHT
 County COWLEY State KANSAS

Location: API #: 15-035-73789-00-00
 1757 FWL & 805FWL SW/4
 SEC 35 TWP 33S RGE 5E
 Permanent Datum GL Elevation 1230
 Log Measured From KB
 Drilling Measured From KB
 Other Services
 ILD
 CDLN
 Elevation
 K.B. 1239
 D.F. 1238
 G.L. 1230

Date	9-15-2023
Run Number	ONE
Depth Driller	3300
Depth Logger	3301
Bottom Logged Interval	3298
Top Log Interval	SURFACE
Casing Driller	8.625" @ 209
Casing Logger	8.625" @ 209
Bit Size	7.875"
Type Fluid in Hole	MUD
Density / Viscosity	9.2 / 58
pH / Fluid Loss	11.5 / 8.8
Source of Sample	PIT
Rm @ Meas. Temp	1.6 @ 70
Rmf @ Meas. Temp	1.2 @ 70
Rmc @ Meas. Temp	2.1 @ 70
Source of Rmf / Rmc	CALCULATED
Rm @ BHT	1.1 @ 105
Time Circulation Stopped	6:00 AM
Time Logger on Bottom	10:00 AM
Maximum Recorded Temperature	105
Equipment Number	OW2
Location	HOMINY, OK
Recorded By	MACKAY
Witnessed By	MR. WOLFE
	KIDD

<<< Fold Here >>>

All interpretations are opinions based on inferences from electrical or other measurements and we cannot and do not guarantee the accuracy or correctness of any interpretation, and we shall not, except in the case of gross or willful negligence on our part, be liable or responsible for any loss, costs, damages, or expenses incurred or sustained by anyone resulting from any interpretation made by any of our officers, agents or employees. These interpretations are also subject to our general terms and conditions set out in our current Price Schedule.

Comments

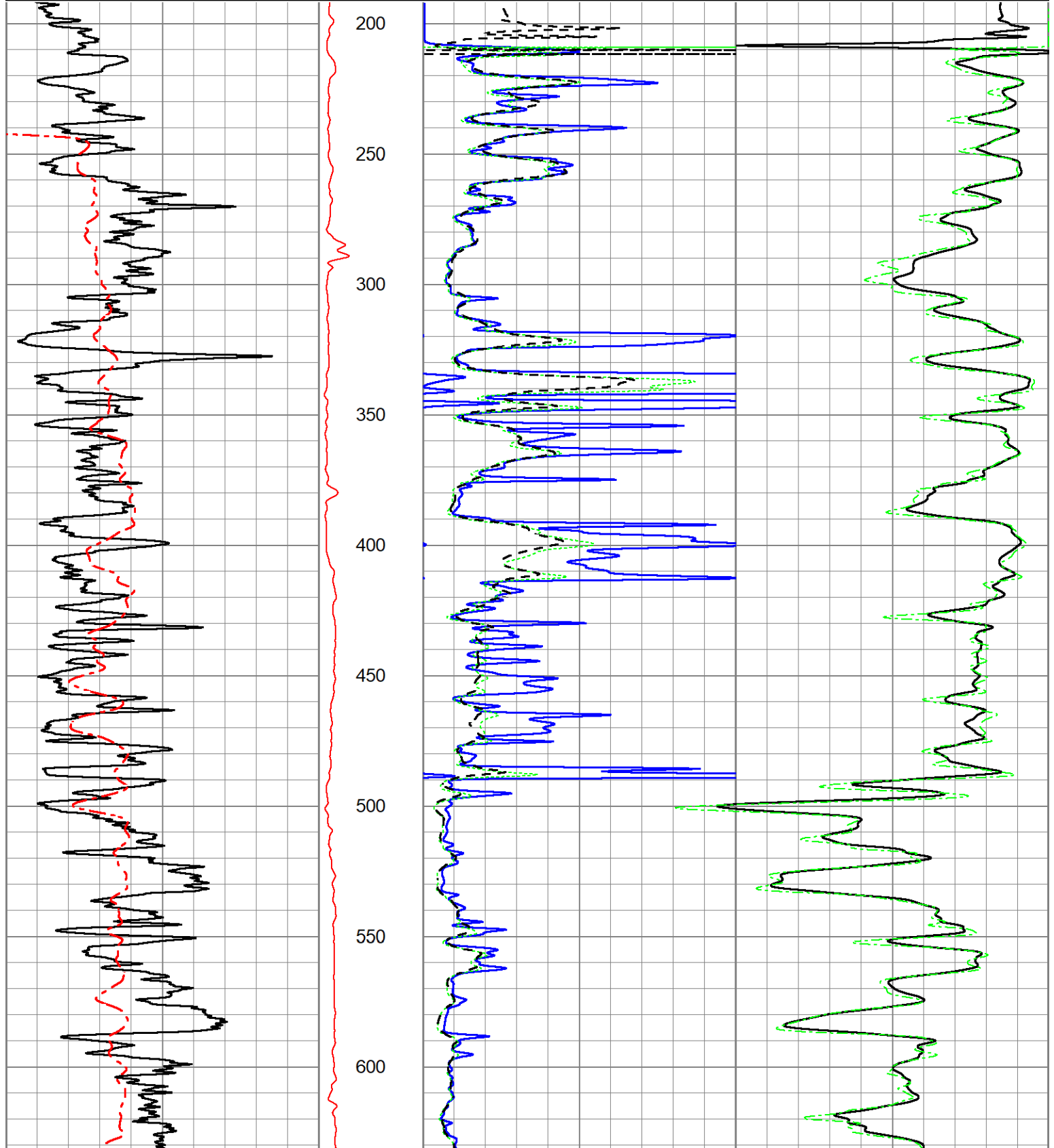
FILE # OW1-9219 VAL ENERGY
 THANK YOU FOR USING OSAGE WIRELINE

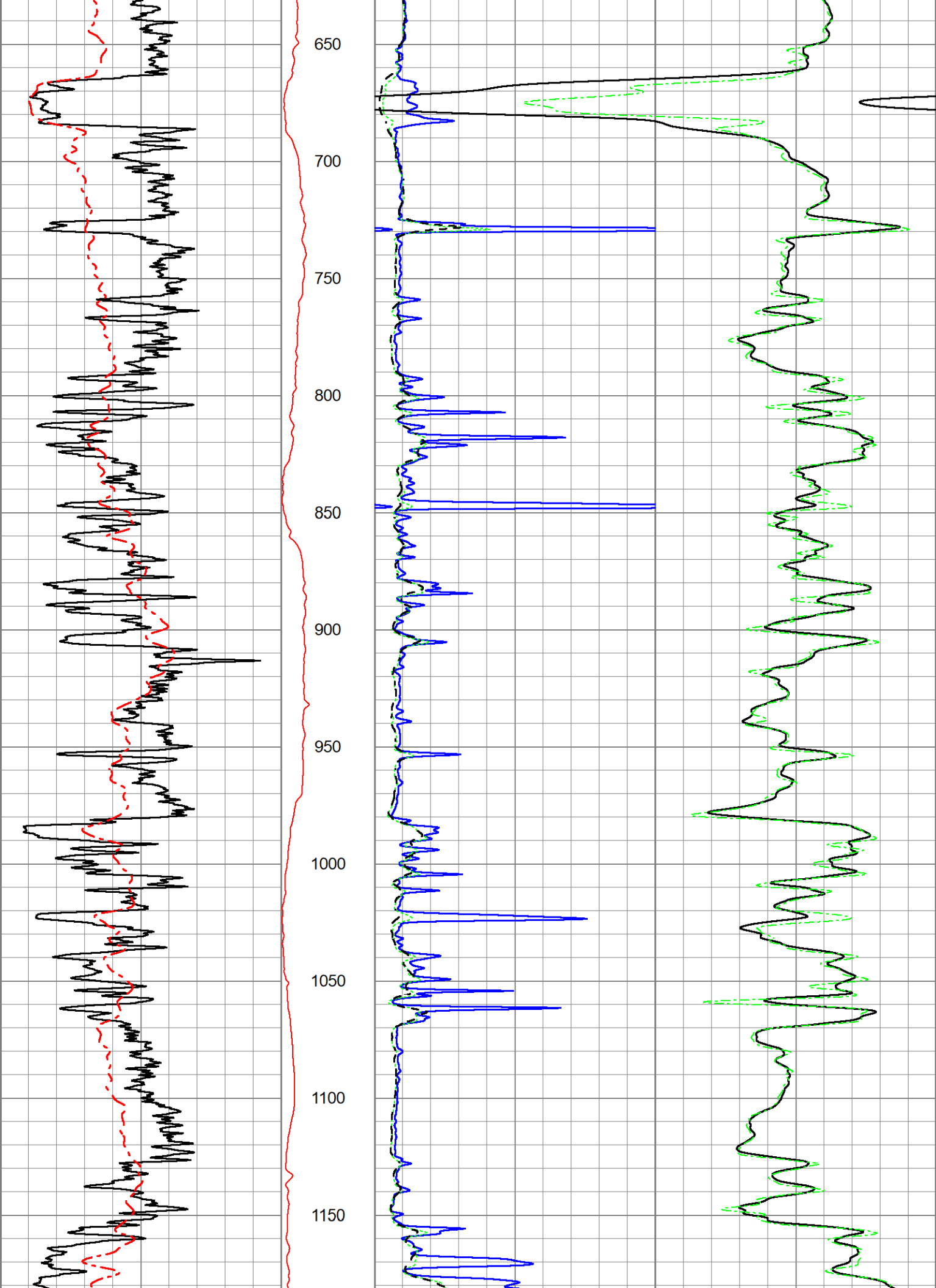


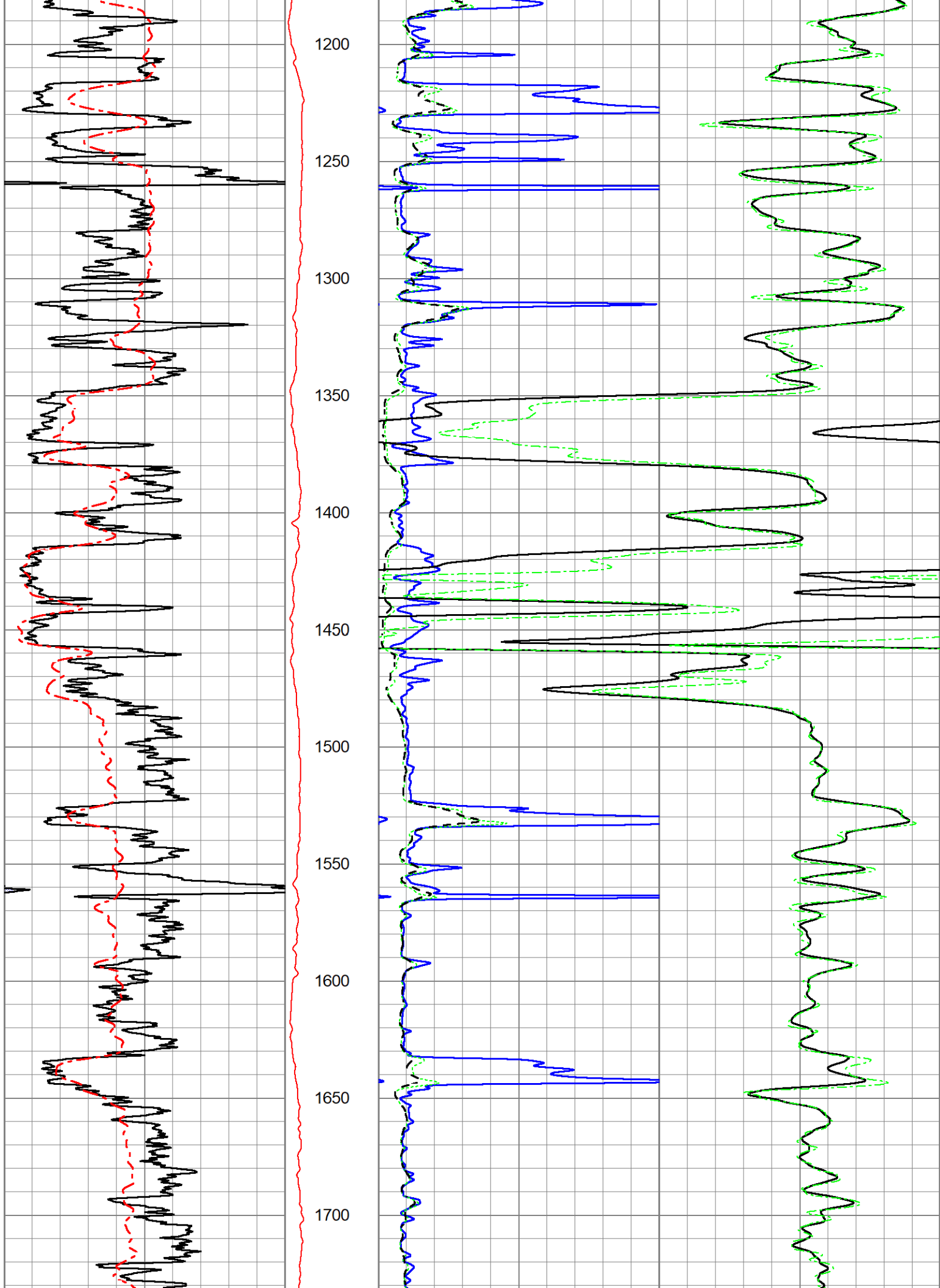
2" DUAL INDUCTION LOG

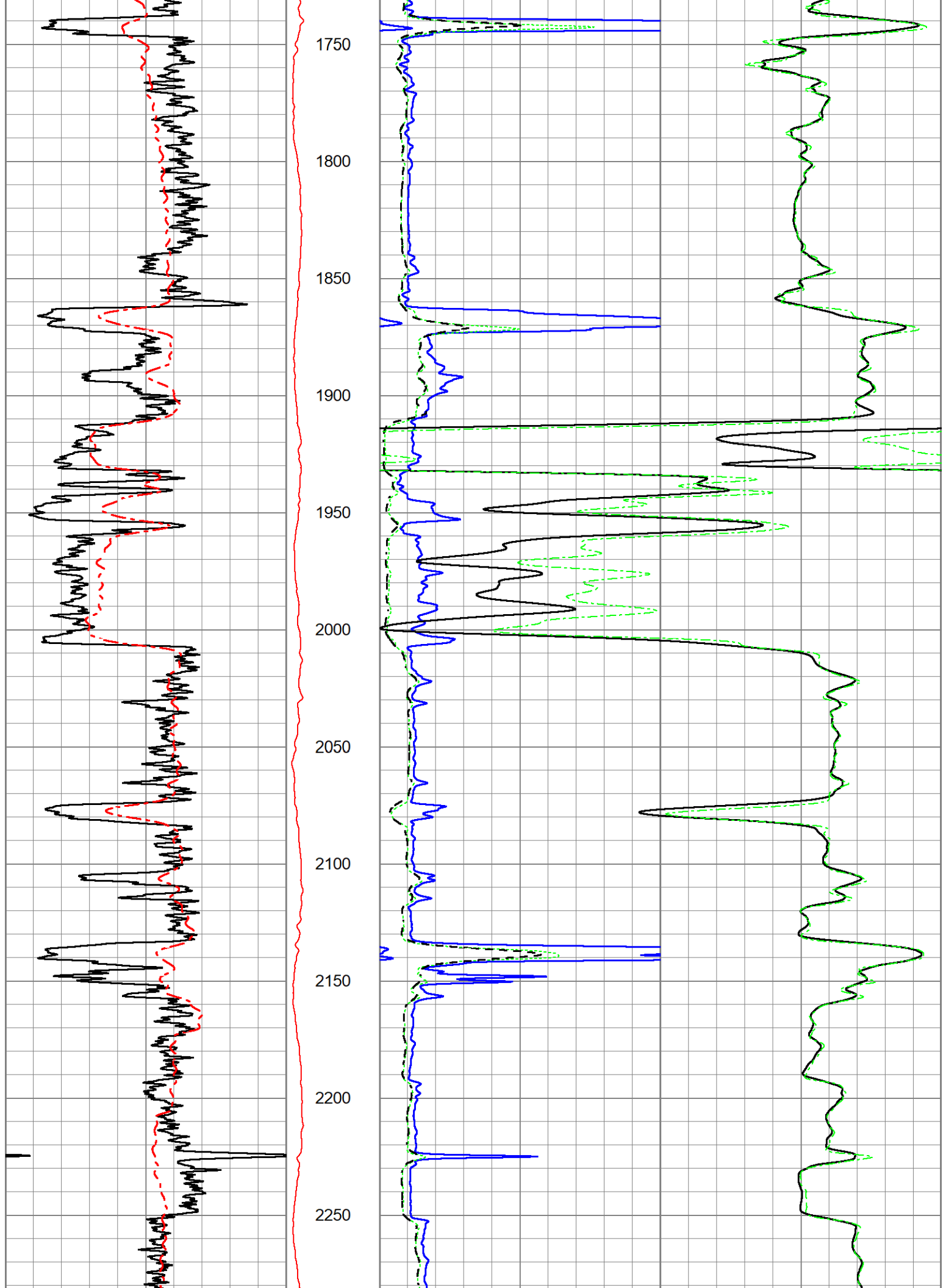
Database File ow1-9219 val energy.db
 Dataset Pathname pass3.8
 Presentation Format mmdil2
 Dataset Creation Fri Sep 15 11:05:45 2023
 Charted by Depth in Feet scaled 1:600

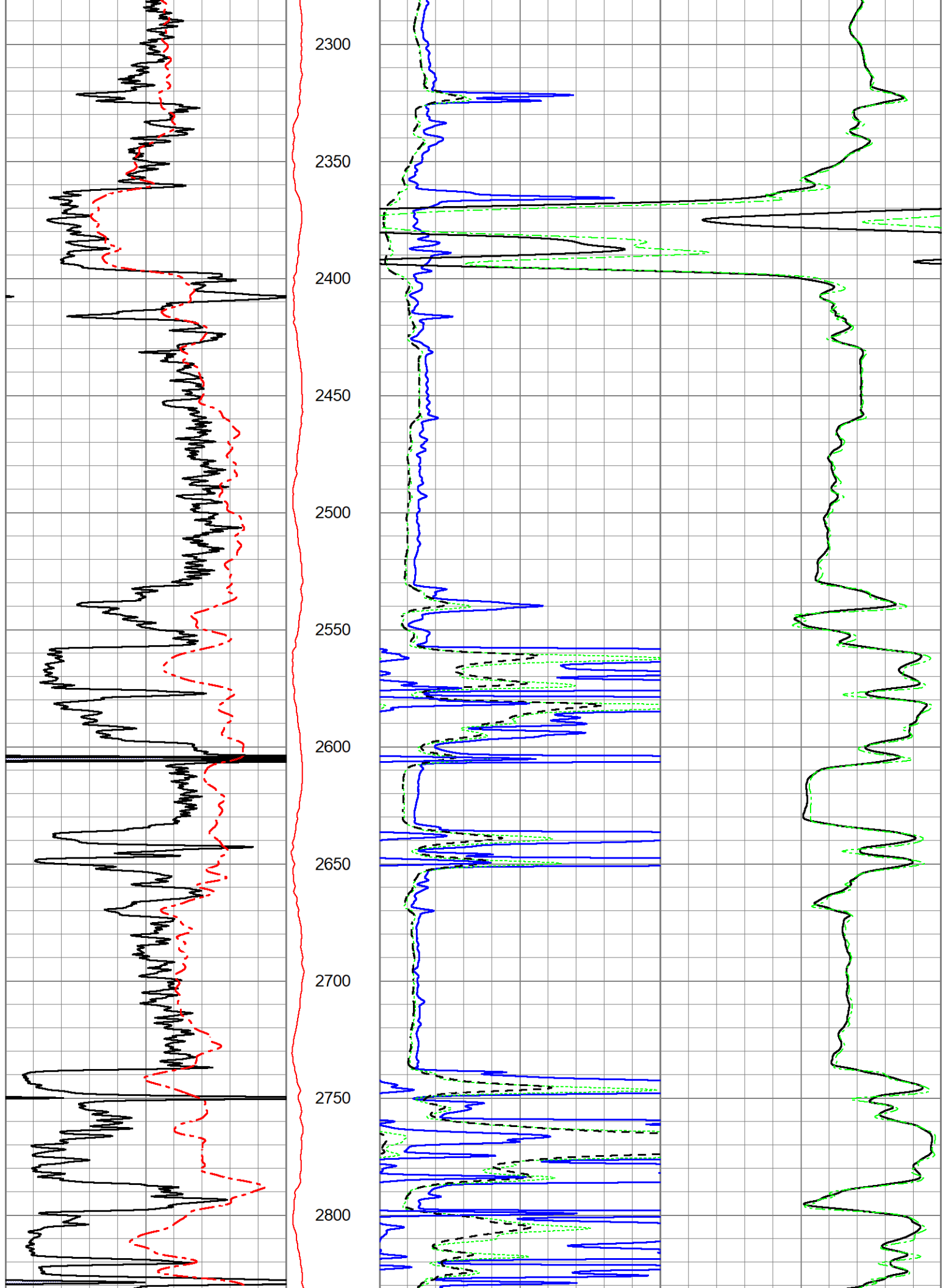
0	GR (GAPI)	150	DEVI	1000	CILD (mmho/m)	0
0	Spontaneous Potential (mV)	200	0 (deg)	10	CILM (mmho/m)	0
0				RLL3 (Ohm-m)	50	
0				RILM (Ohm-m)	50	
0				RILD (Ohm-m)	50	

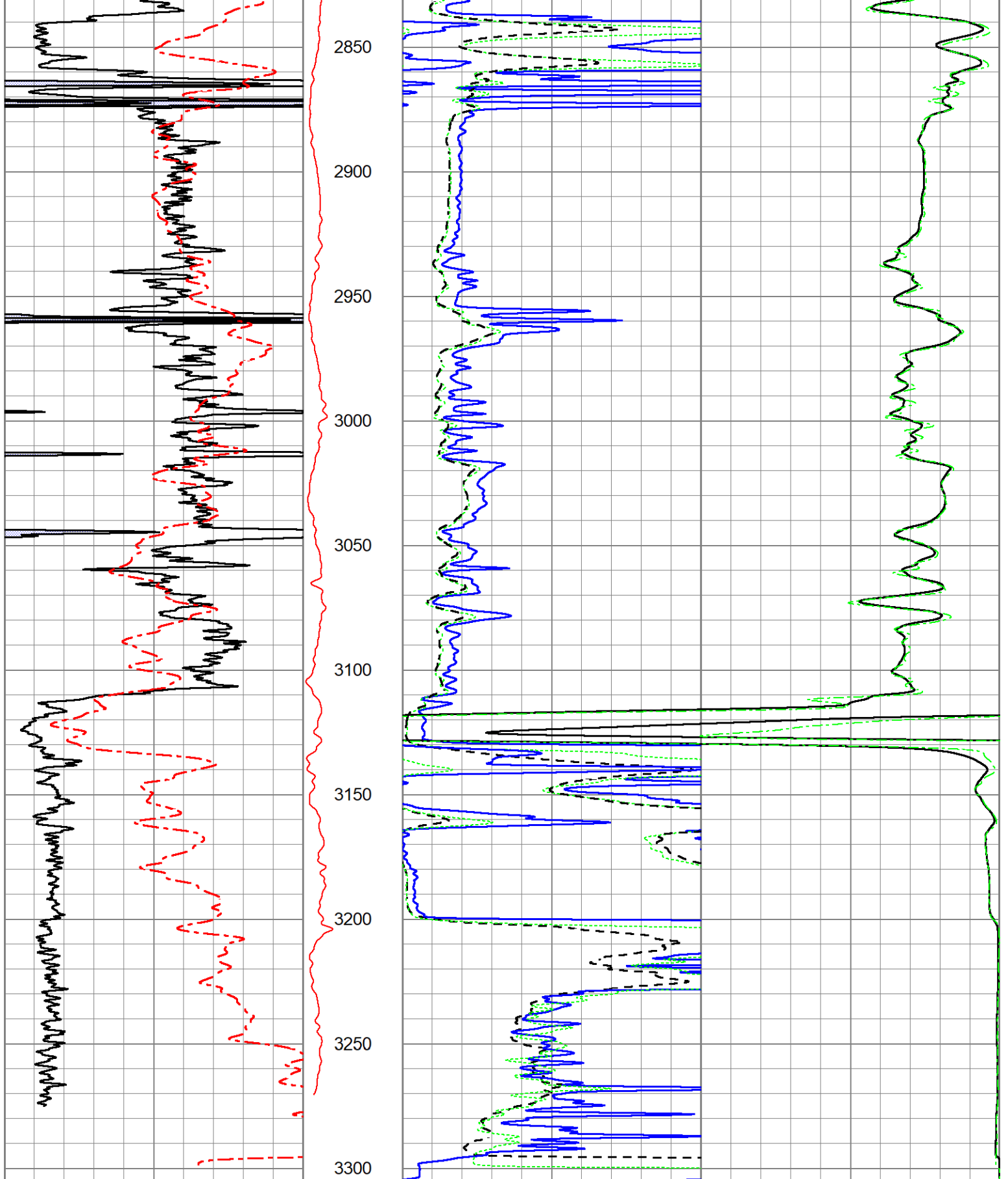












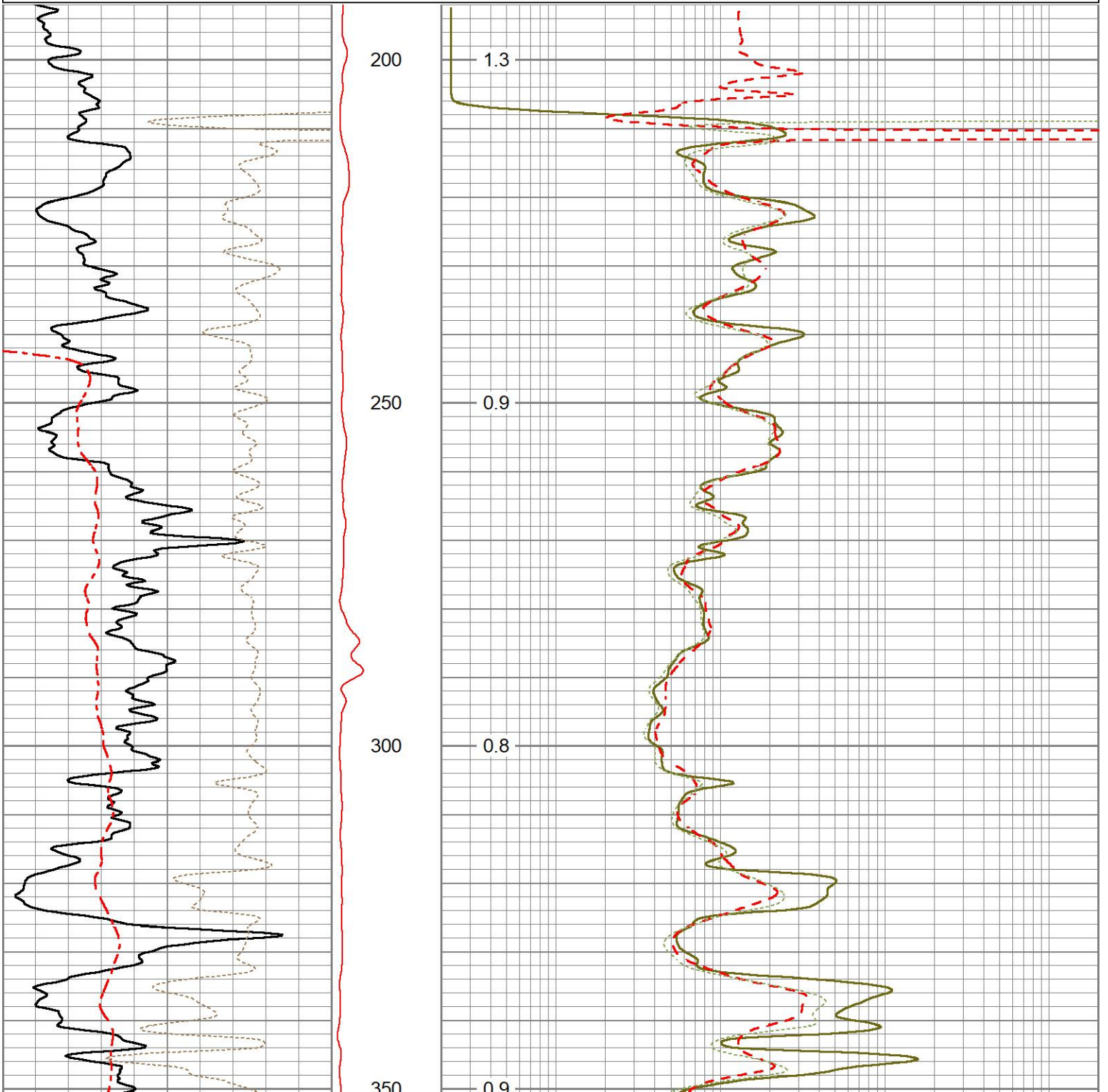
0	GR (GAPI)	150	DEVI	1000	CILD (mmho/m)	0
0	Spontaneous Potential (mV)	200	0 (deg)	10	CILM (mmho/m)	0
0	RLL3 (Ohm-m)	50				
0	RILM (Ohm-m)	50				
0	RILD (Ohm-m)	50				

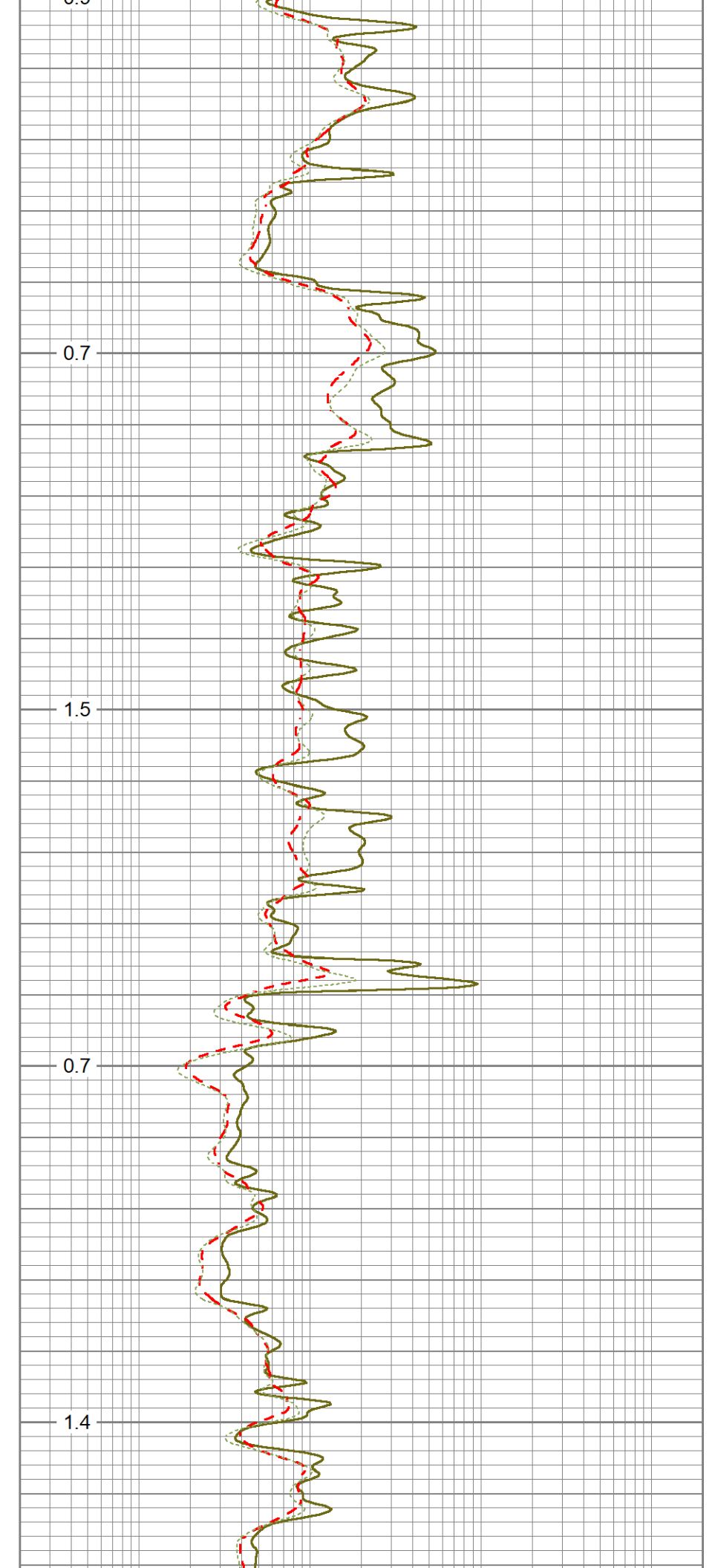
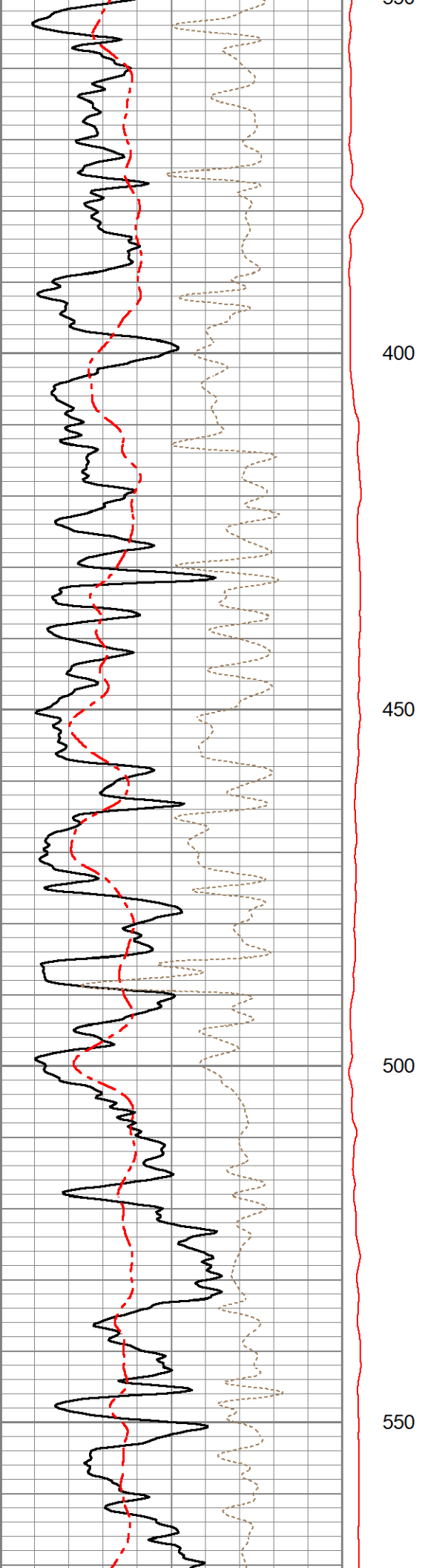


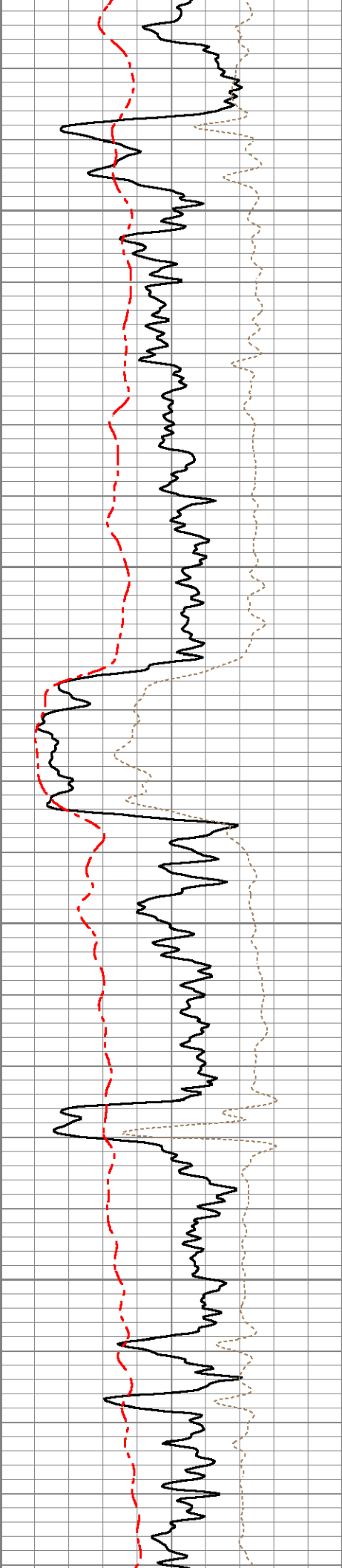
5" DUAL INDUCTION LOG

Database File ow1-9219 val energy.db
Dataset Pathname pass3.9
Presentation Format mmdil5
Dataset Creation Fri Sep 15 11:05:58 2023
Charted by Depth in Feet scaled 1:240

0	Gamma Ray (GAPI)	150	DEVI	0.2	Shallow Resistivity (Ohm-m)	2000
0	Spontaneous Potential (mV)	200	0 (deg)	10	Deep Resistivity (Ohm-m)	2000
-150	Rxo\Rt	50		0.2	Medium Resistivity (Ohm-m)	2000
			DEVI (deg)			





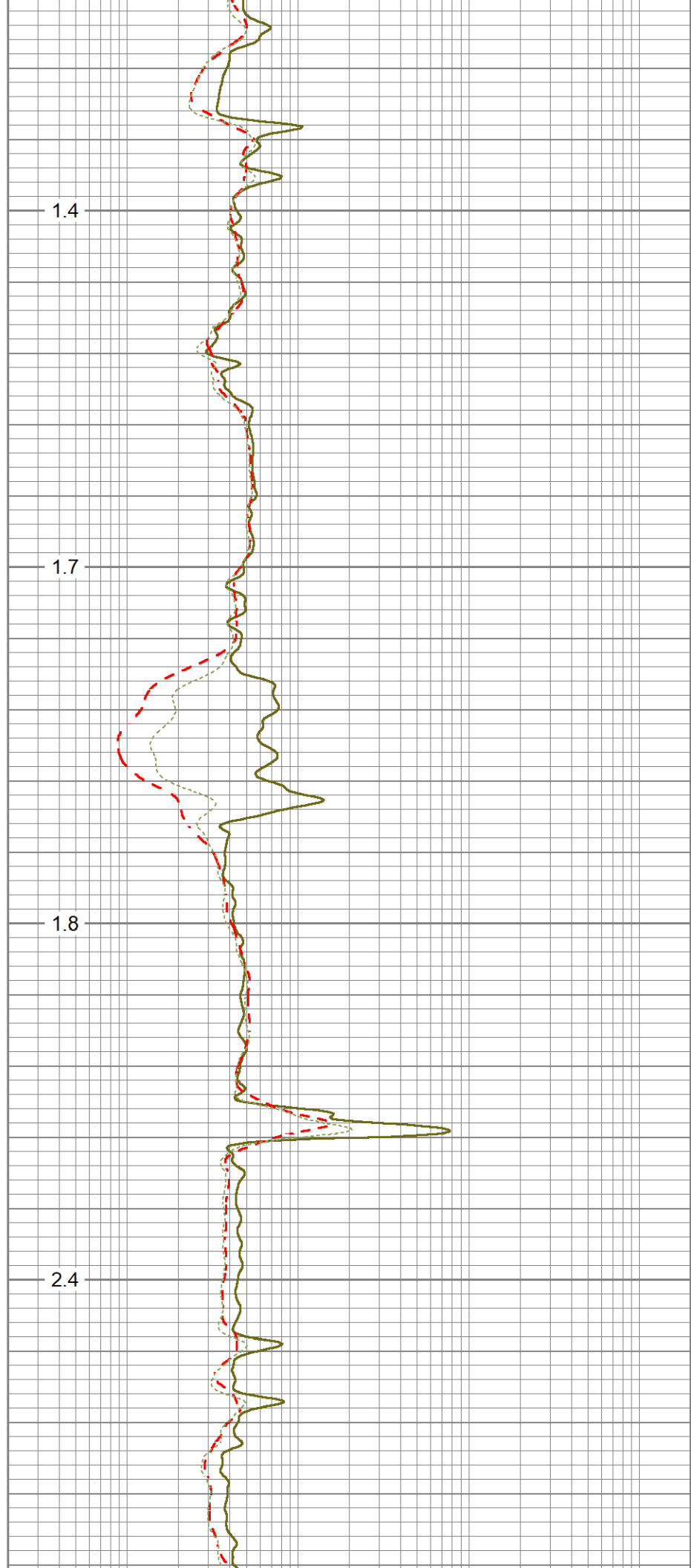


600

650

700

750

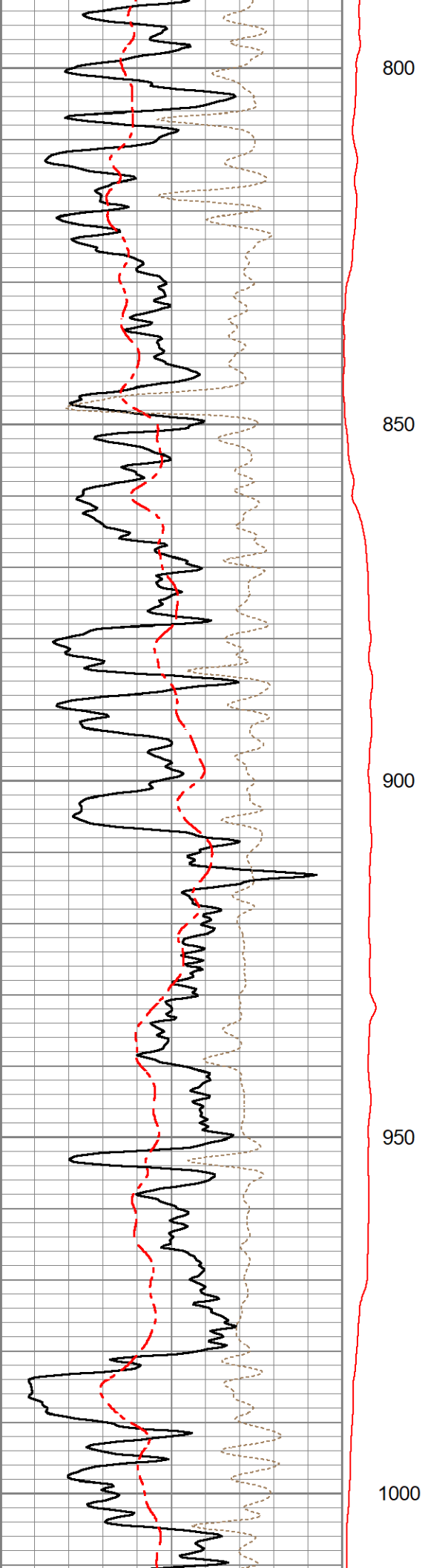


1.4

1.7

1.8

2.4



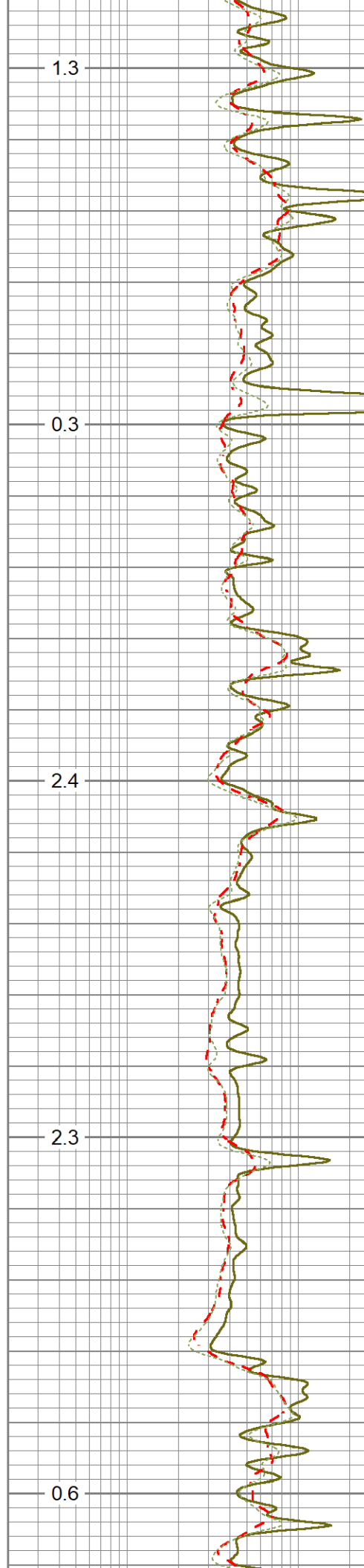
800

850

900

950

1000



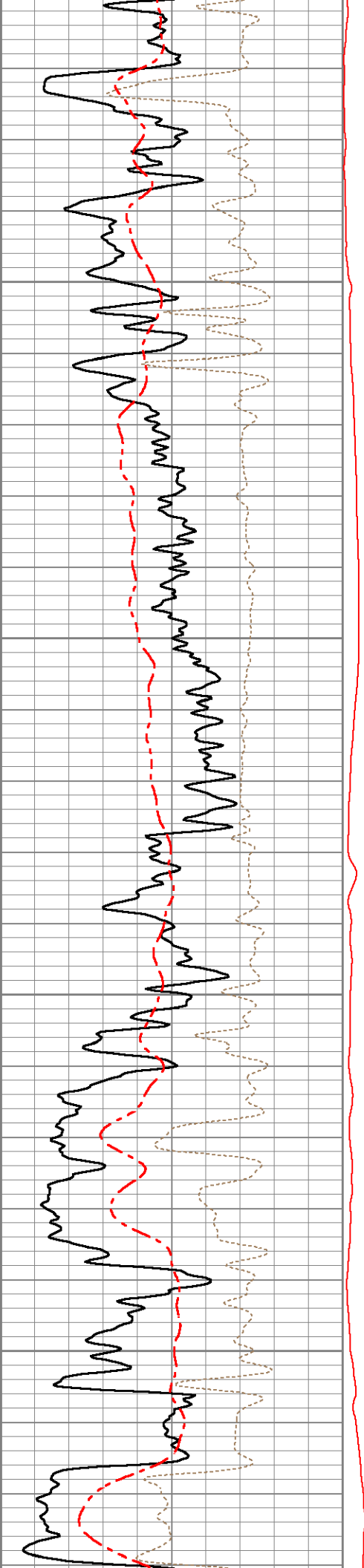
1.3

0.3

2.4

2.3

0.6

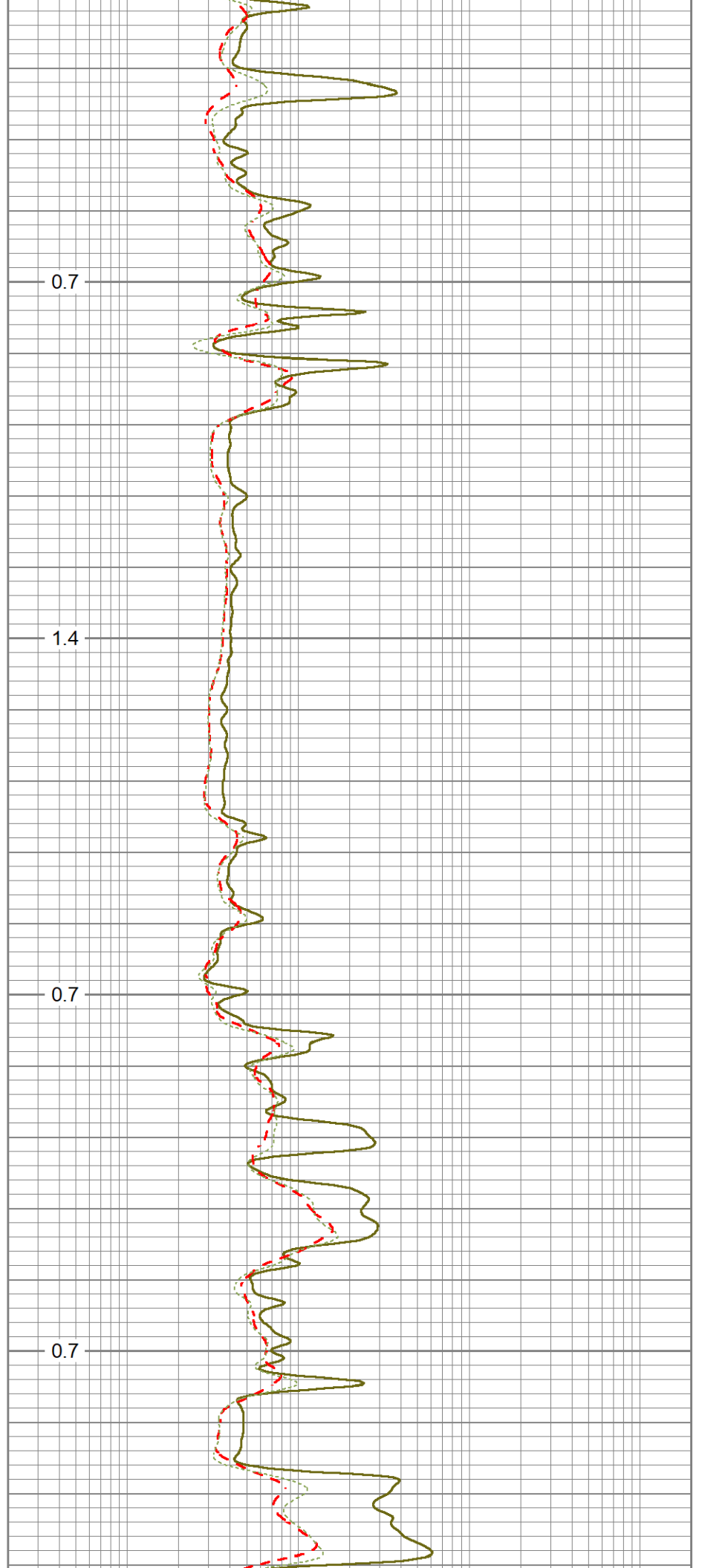


1050

1100

1150

1200

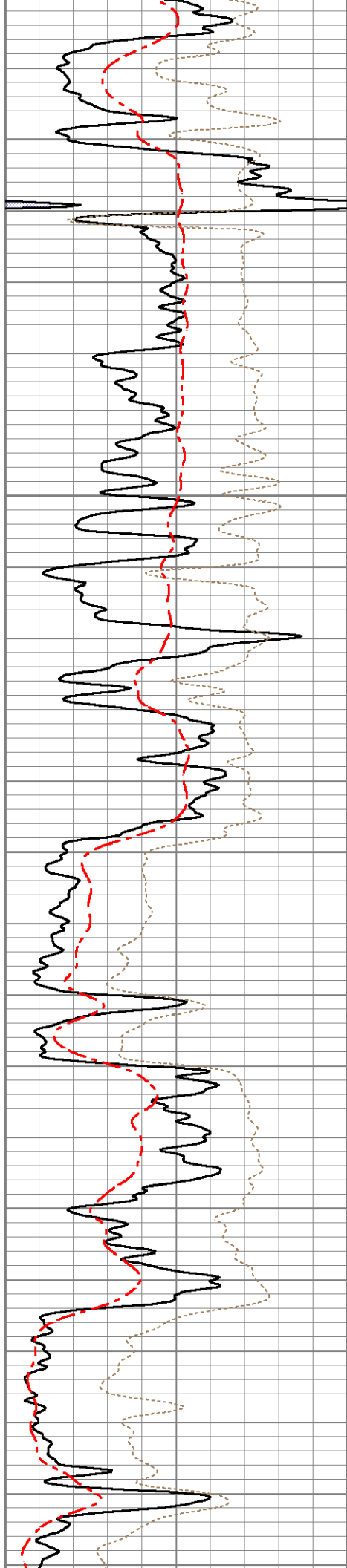


0.7

1.4

0.7

0.7



1250

1300

1350

1400

1450

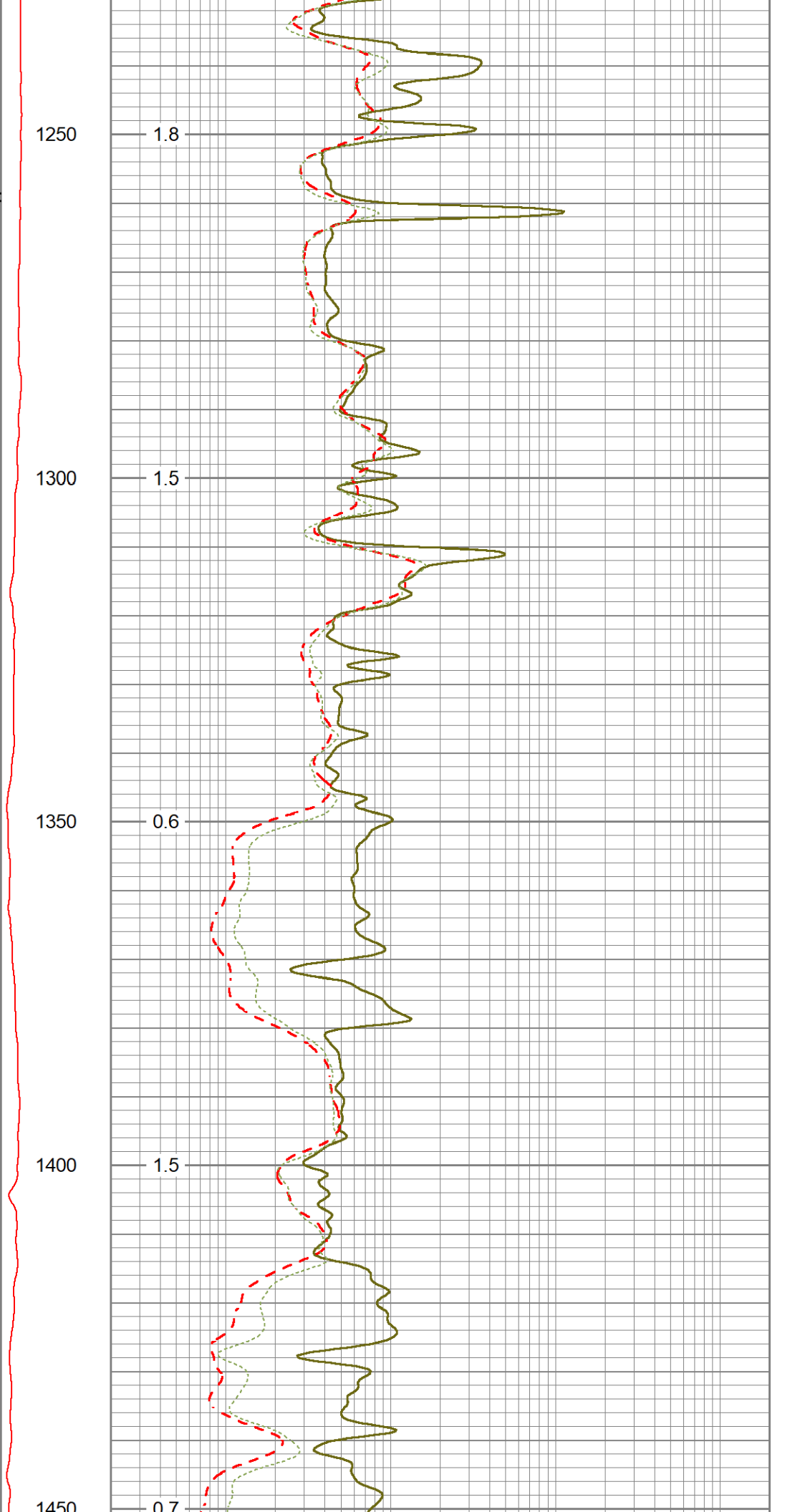
1.8

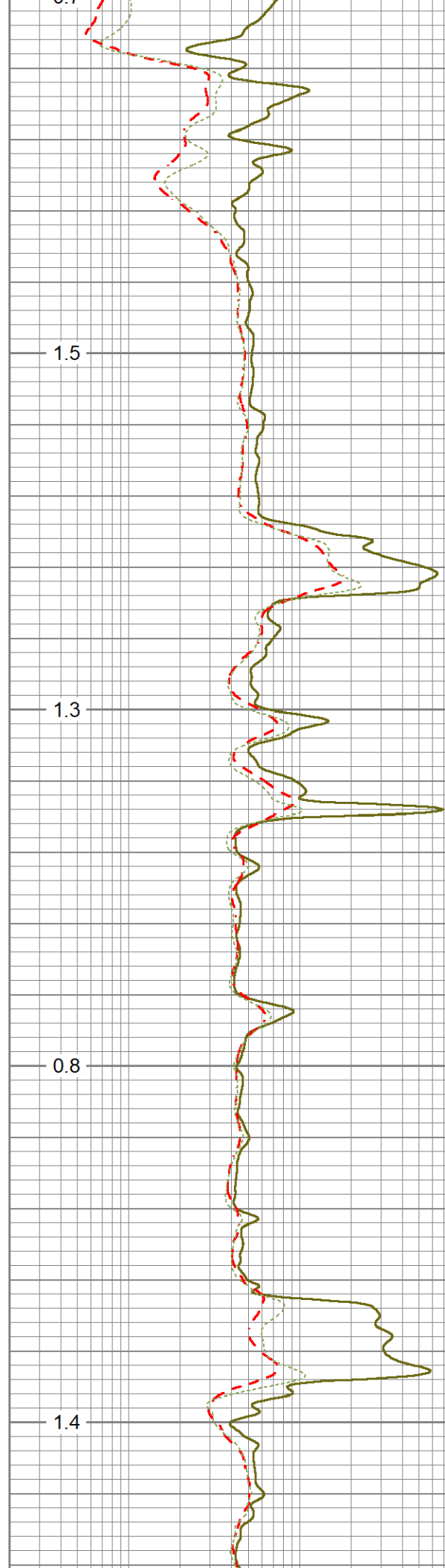
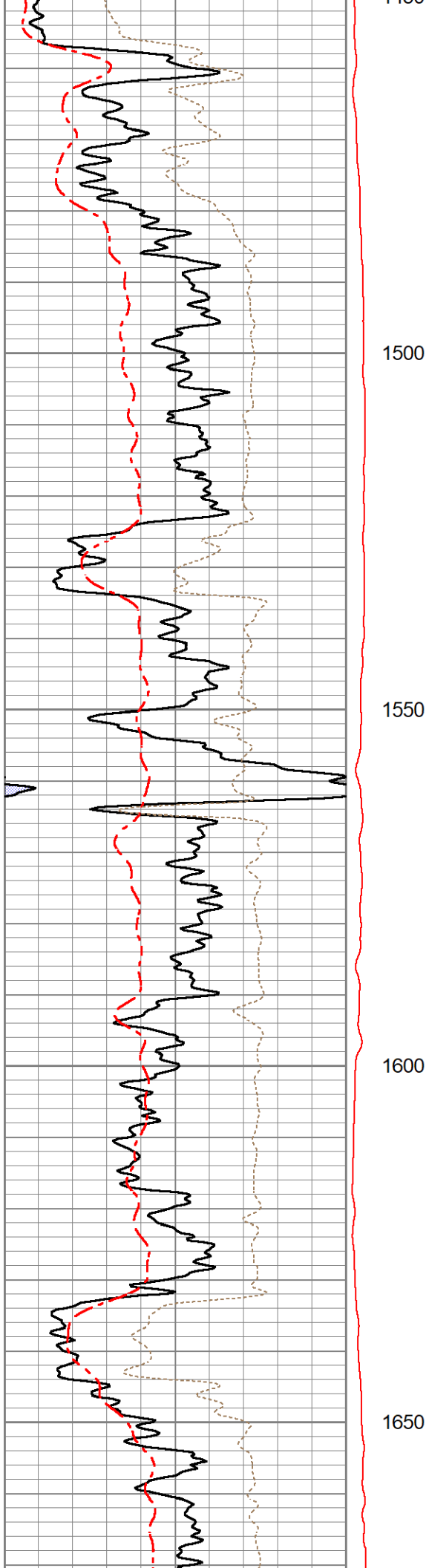
1.5

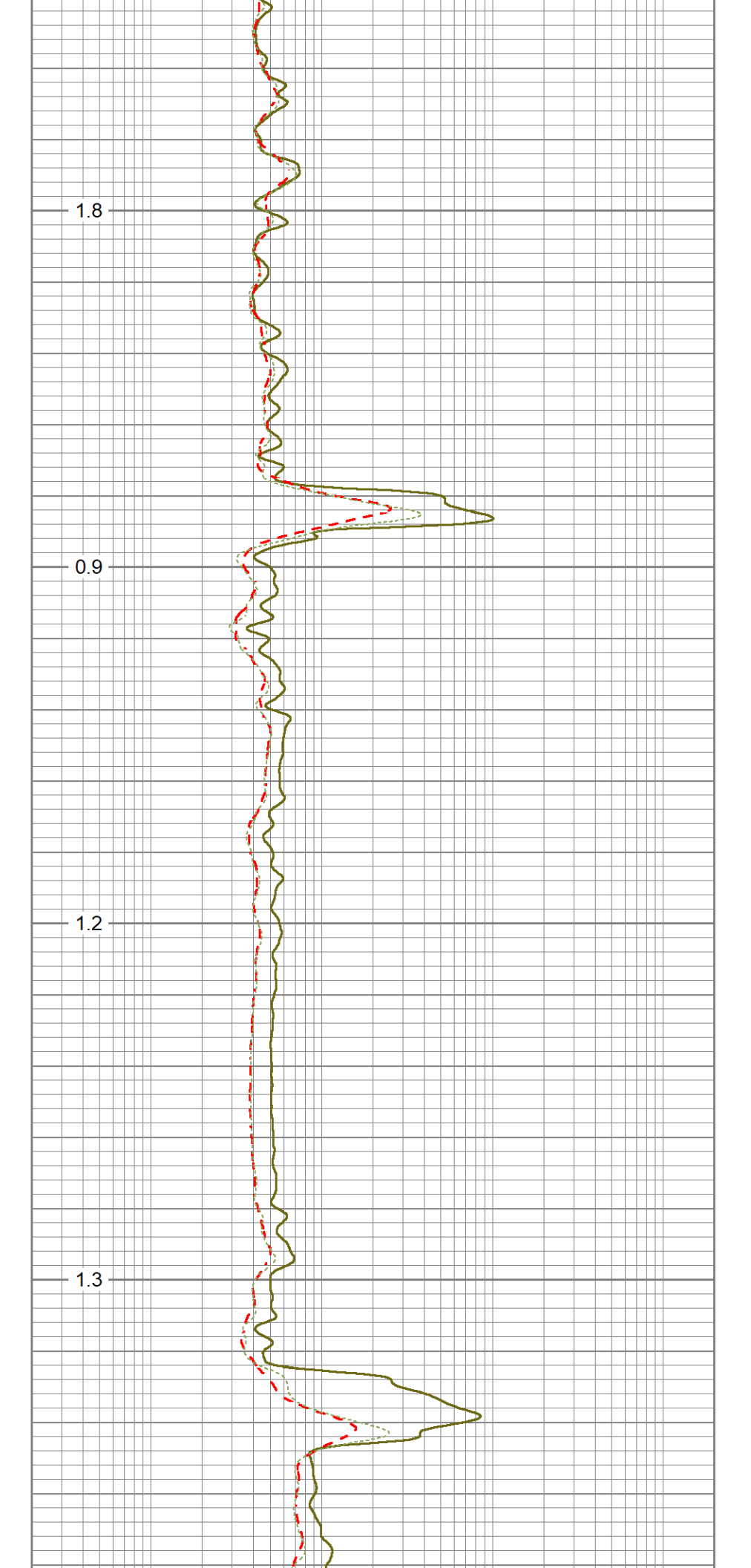
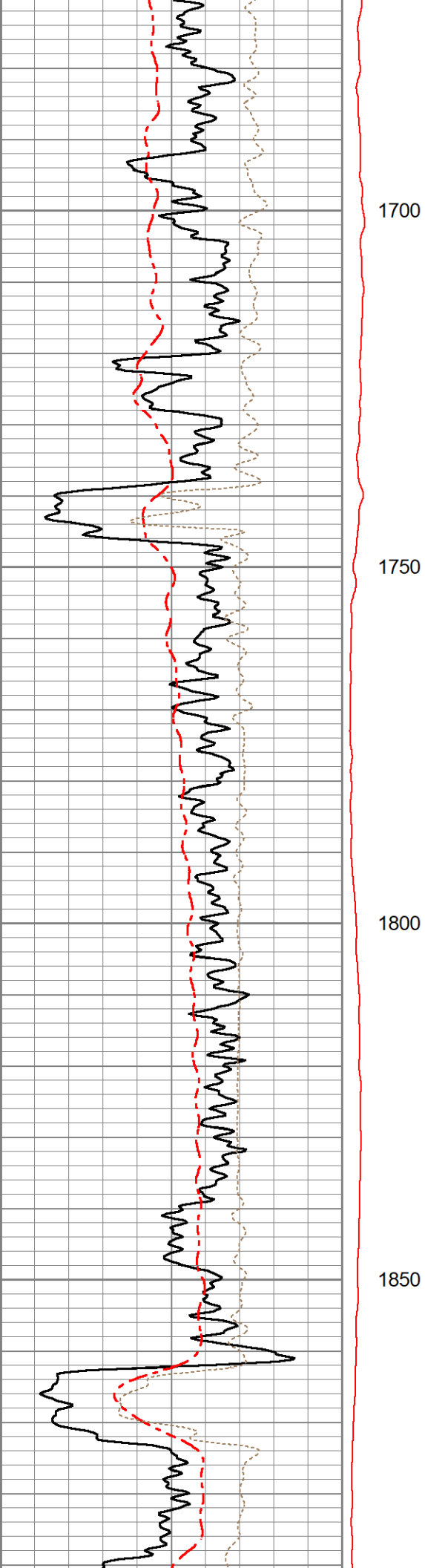
0.6

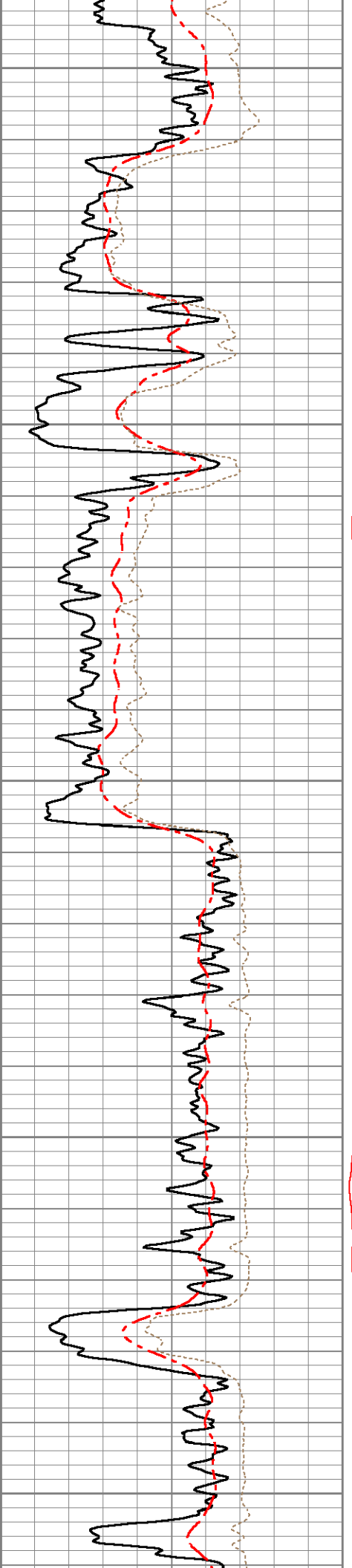
1.5

0.7









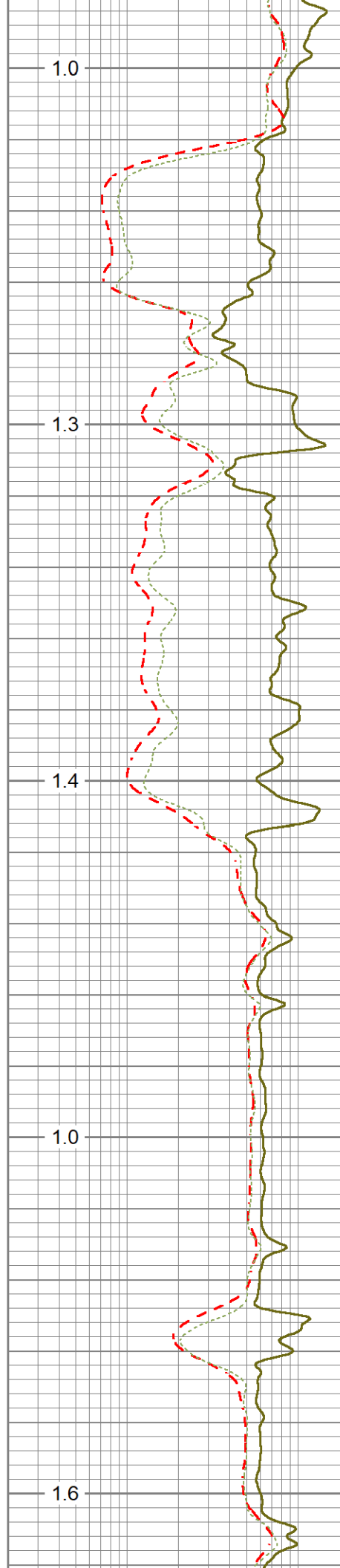
1900

1950

2000

2050

2100



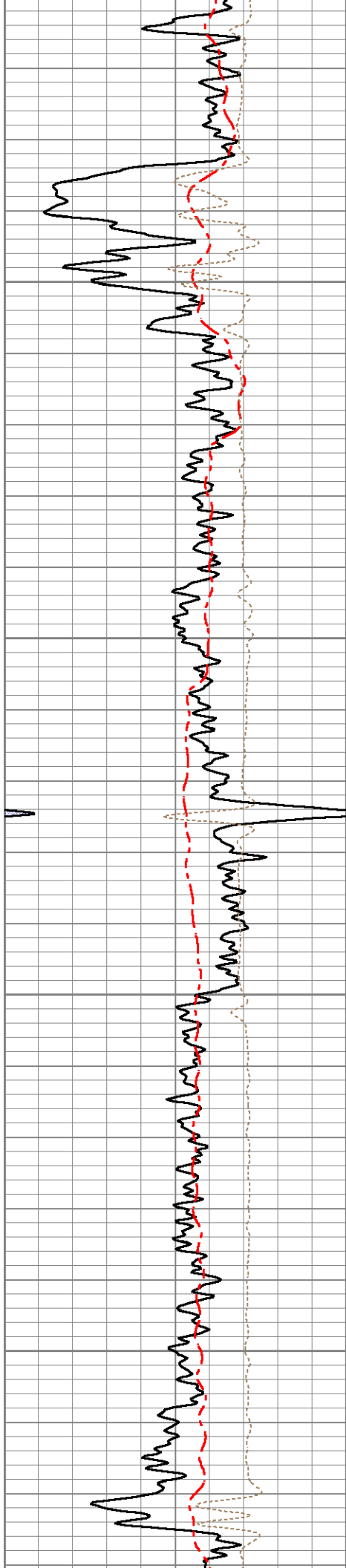
1.0

1.3

1.4

1.0

1.6



2150

2200

2250

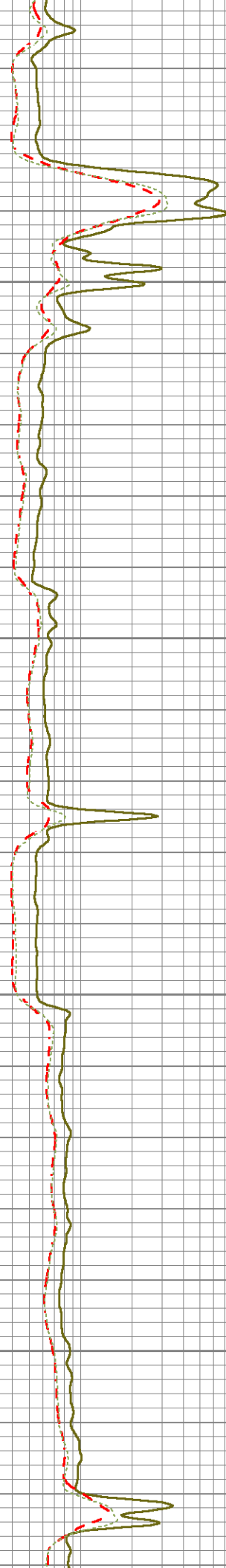
2300

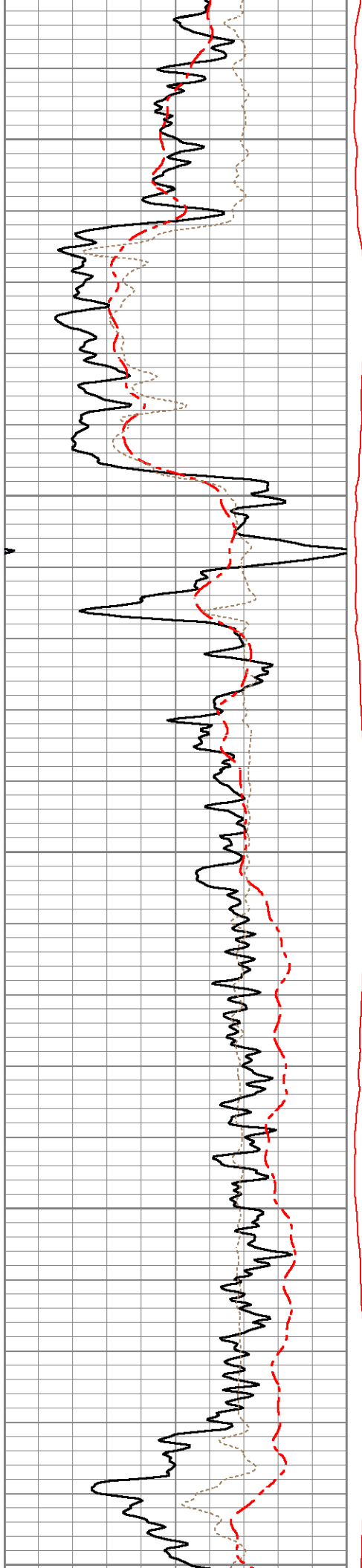
0.8

1.7

0.8

1.6





2350

2400

2450

2500

2550

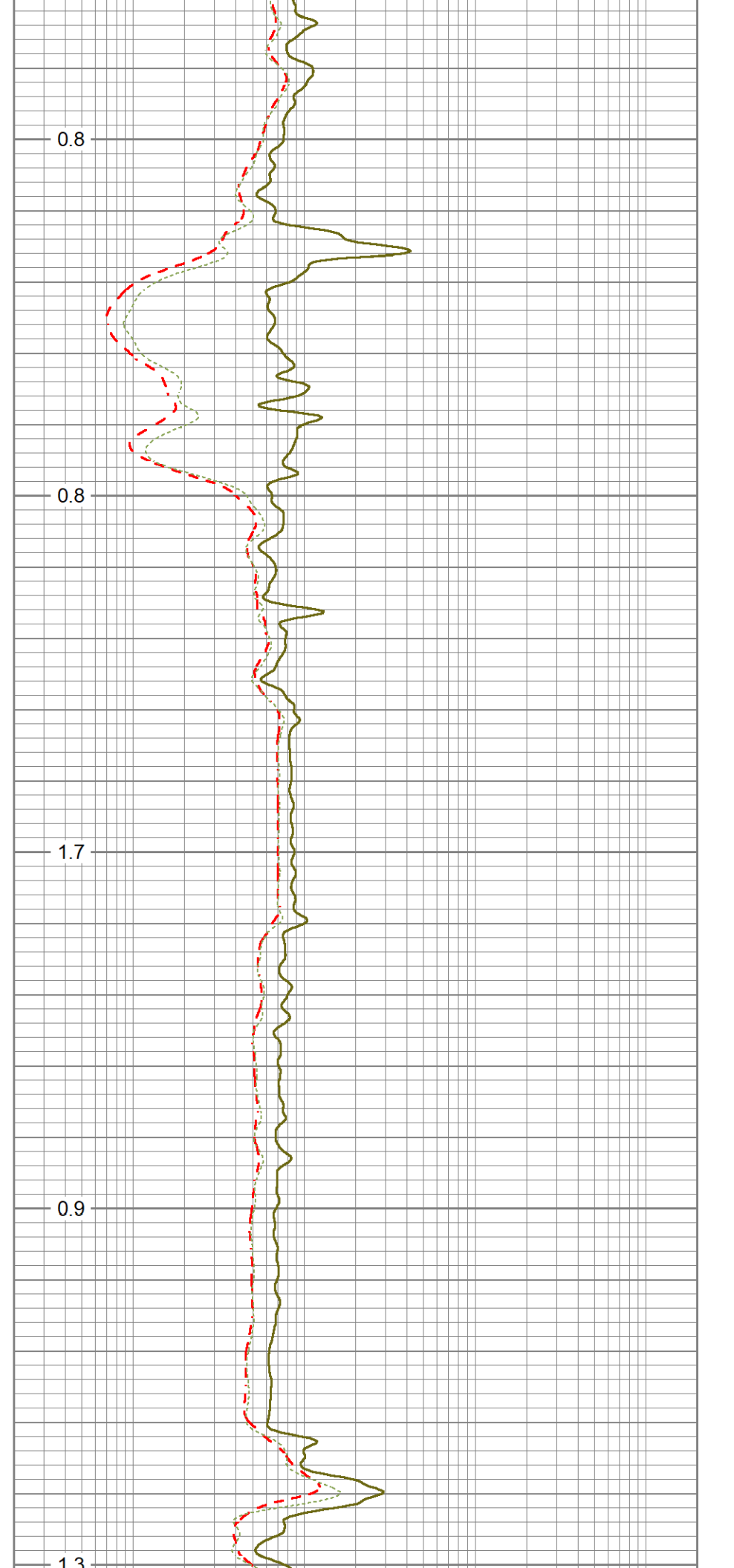
0.8

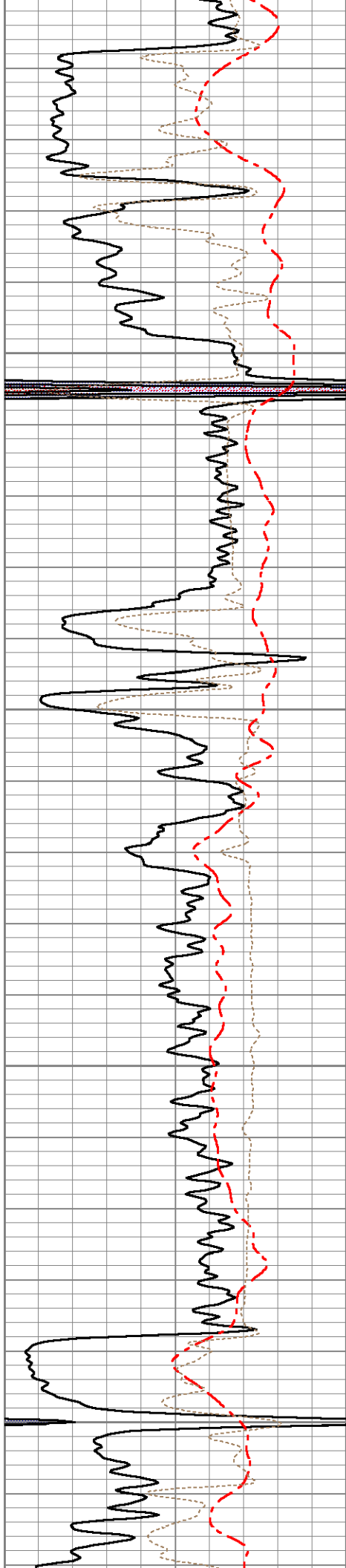
0.8

1.7

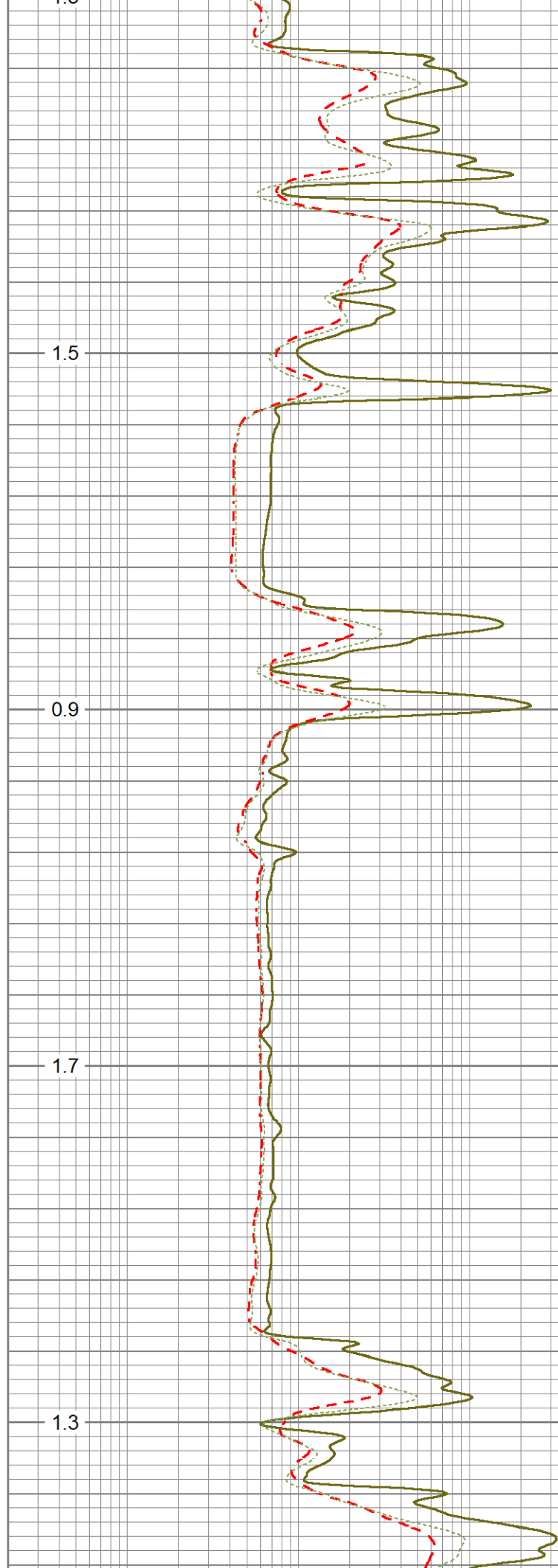
0.9

1.3

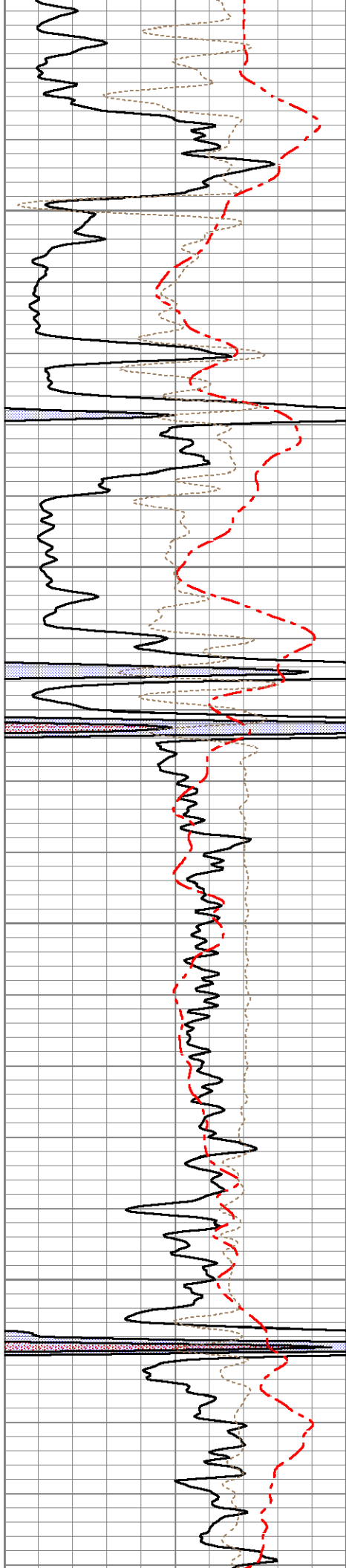




2600
2650
2700
2750



1.0
1.5
0.9
1.7
1.3

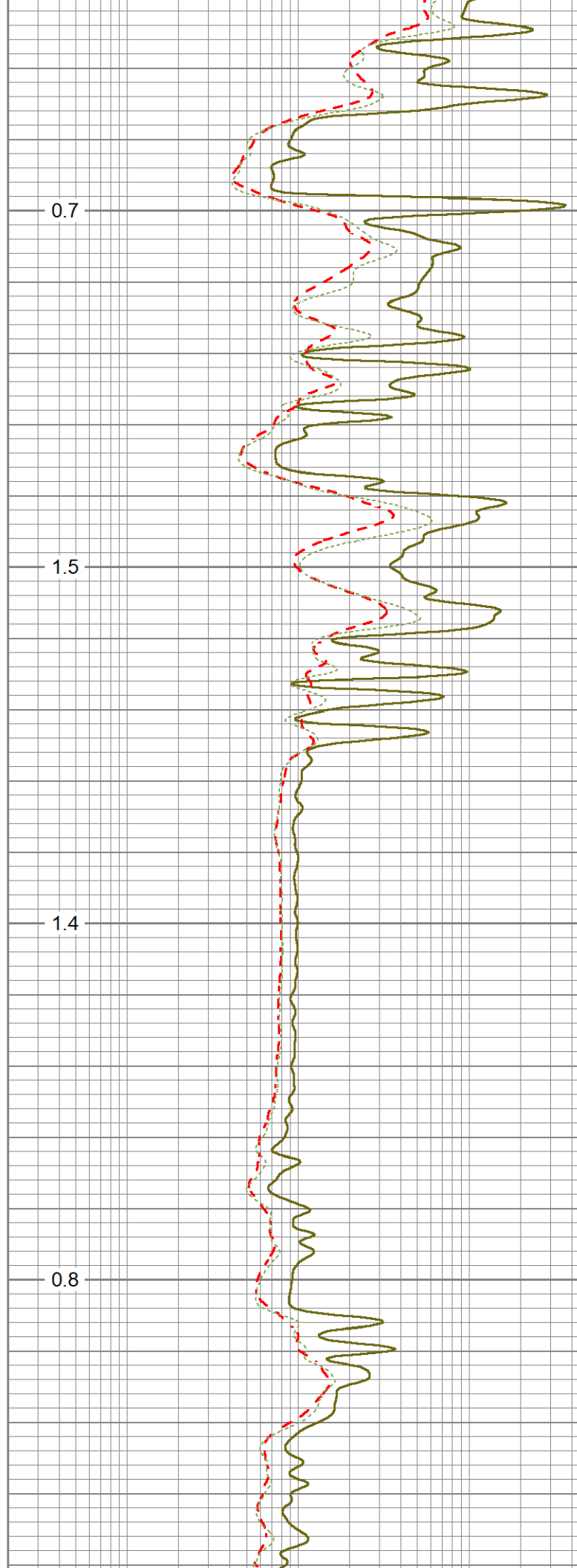


2800

2850

2900

2950

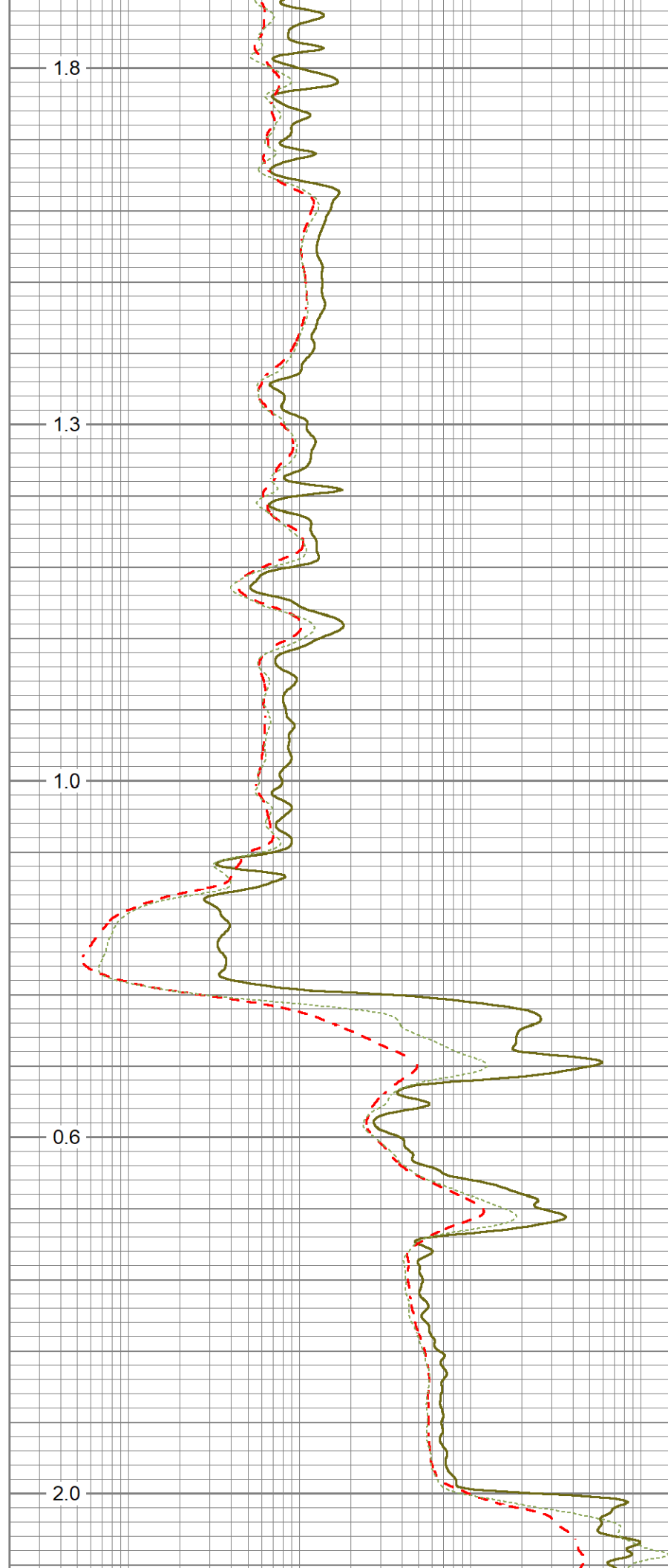
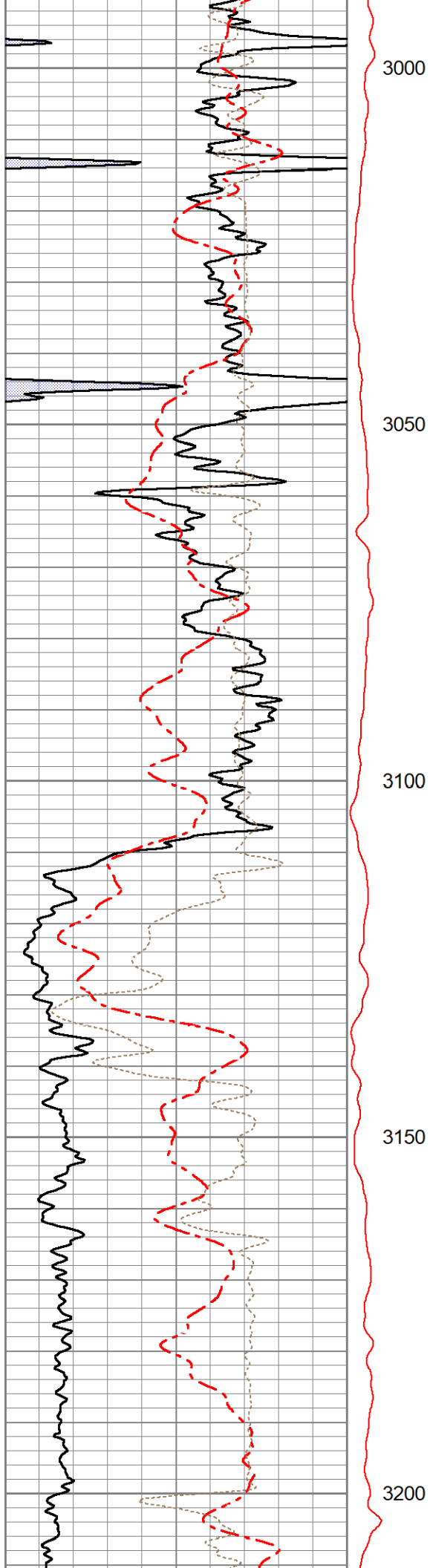


0.7

1.5

1.4

0.8



Deep	-2.869	354.028	mmho/m	-0.044	350.323	mmho/m	0.982	2.773
Medium	-3.741	414.629	mmho/m	-0.037	400.340	mmho/m	0.957	3.543
LL3		9.500	V		2000.000	Ohm-m		
		0.000	V		20.000	Ohm-m		
		-9.500	V		5000.000	mmho-m		

After Survey Verification								
	Readings			Targets			Results	
	Zero	Cal		Zero	Cal		m'	b'
Deep	0.000	0.000	mmho/m	-2.869	354.028	mmho/m	1.000	0.000
Medium	0.000	0.000	mmho/m	-3.741	414.629	mmho/m	1.000	0.000
LL3		0.000	Ohm-m		2.000	Ohm-m		
		0.000	Ohm-m		500.000	Ohm-m		
		0.000	mmho-m		1.000	mmho-m		

Microlog Calibration Report

Serial-Model: 070527-Osage
 Performed: Tue May 16 12:44:22 2023

	Readings			References			Results	
	Zero	Cal		Zero	Cal		m	b
Normal	0.0025	0.1840	V	0.0000	20.0000	Ohm-m	110.2220	-0.2763
Inverse	-0.0030	0.2382	V	0.0000	20.0000	Ohm-m	82.9338	0.2472
Caliper	1.8072	4.5758	V	5.6250	11.2500	in	2.0318	1.9531

Inclinometer Calibration Report

Performed:	Thu Oct 8 13:57:38 2020						
	Low Read.	High Read.		Low Ref.	High Ref.		
X Accelerometer	205.00	1843.00		-1.00	1.00	gee	
Y Accelerometer	205.00	1843.00		-1.00	1.00	gee	
Z Accelerometer						gee	

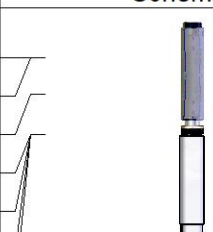
Gamma Ray Calibration Report

Serial Number: Refurb01
 Tool Model: OSAGE_01
 Performed: Mon Jan 18 09:02:16 2021

Calibrator Value: 150.0 GAPI

Background Reading: 125.0 cps
 Calibrator Reading: 875.0 cps

Sensitivity: 0.2000 GAPI/cps

Sensor	Offset (ft)	Schematic	Description	Length (ft)	O.D. (in)	Weight (lb)
ACCY	31.04		ADMYR_TELEMETRY-OSAGE_01 (Refurb01) Admyr Telemetry With Gr, Deviation, ADC board and Pulses Board in it.	3.69	3.25	53.00
ACCX	31.04					
GR	29.86					
FRAMES	28.54					
SSTAT	28.54					

PSTAT	28.54		MICRO_DIG-Osage (070527) Digital Microlog	7.21	5.13	137.00
ASTAT	28.54					
MI	23.00					
MN	23.00					
MCAL	22.00					
ASTAT2	21.33					
SP	10.92		DIL-G (RedTool) Gearhart	21.33	4.00	290.00
CILD	10.92					
CILM	7.00					
RLL3	1.65					
TR_Mon	0.00					

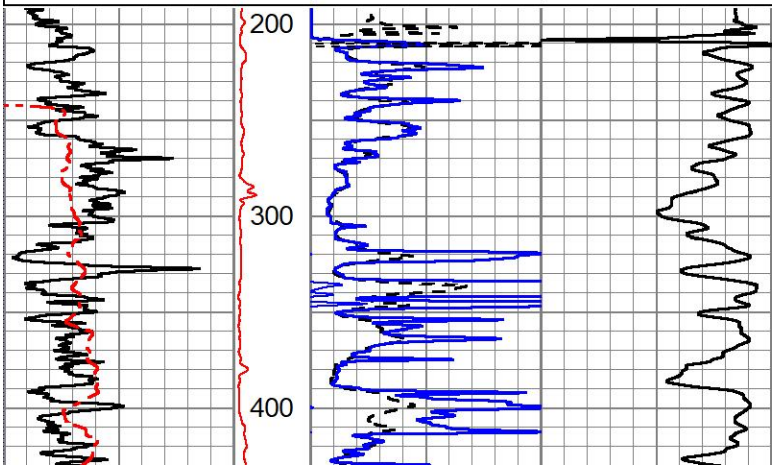
Dataset: ow1-9219 val energy.db: field/well/run1/pass3
 Total length: 32.23 ft
 Total weight: 480.00 lb
 O.D.: 5.13 in

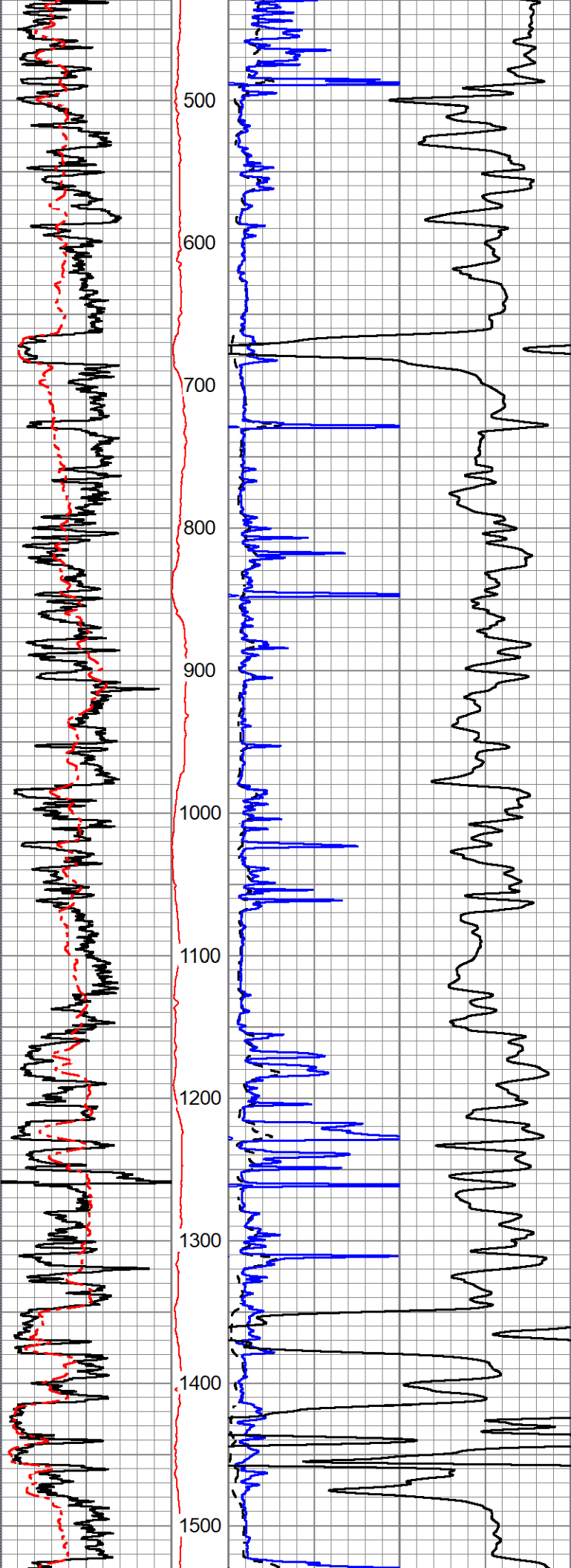


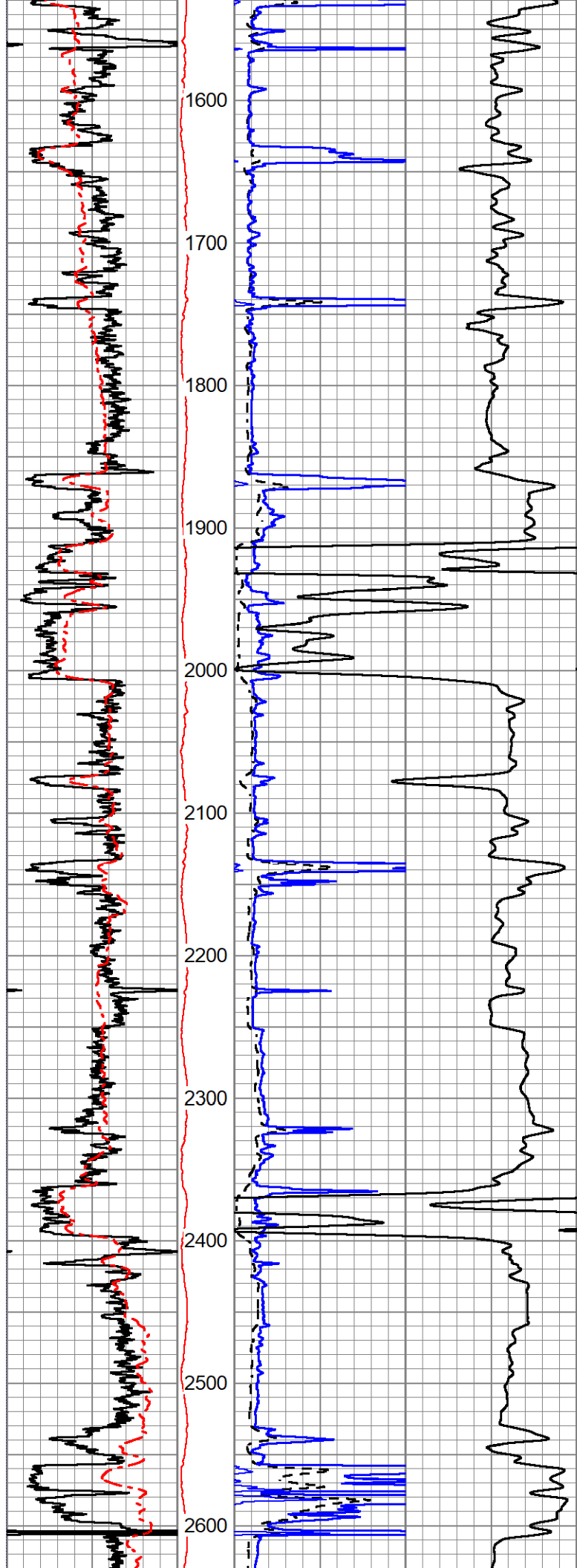
1" INDUCTION LOG

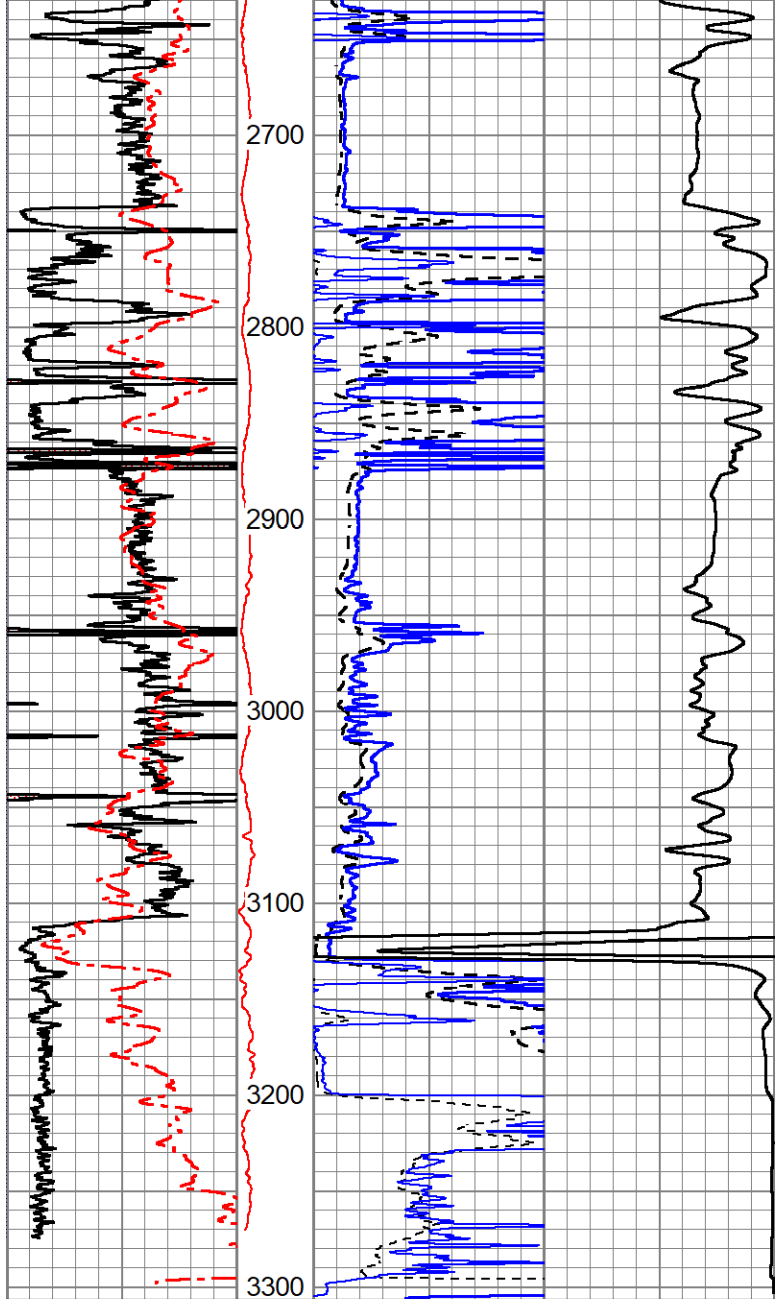
Database File ow1-9219 val energy.db
 Dataset Pathname pass3.7
 Presentation Format mmdil1
 Dataset Creation Fri Sep 15 11:05:32 2023
 Charted by Depth in Feet scaled 1:1200

0	GR (GAPI)150	DEVI	1000	CILD (mmho/m)	0
0	SP (mV) 200	(deg)		RILD	
		0 10		0 (Ohm-m) 50	
				RLL3	
				0 (Ohm-m) 50	









0	GR (GAPI) 150	DEVI	1000	CILD (mmho/m)	0
0	SP (mV) 200	(deg)	0	RILD	50
		0 10		(Ohm-m)	
				RLL3	50
				(Ohm-m)	