



MICROLOG

Company VAL ENERGY INC
 Well J.O. # 4-35
 Field ALBRIGHT
 County COWLEY State KANSAS

Location: API #: 15-035-73789-00-00
 1757 FWL & 805FWL SW/4
 SEC 35 TWP 33S RGE 5E
 Permanent Datum GL Elevation 1230
 Log Measured From KB
 Drilling Measured From KB
 Other Services
 ILD
 CDLN
 Elevation
 K.B. 1239
 D.F. 1238
 G.L. 1230

Date	9-15-2023
Run Number	ONE
Depth Driller	3300
Depth Logger	3301
Bottom Logged Interval	3298
Top Log Interval	SURFACE
Casing Driller	8.625" @ 209
Casing Logger	8.625" @ 209
Bit Size	7.875"
Type Fluid in Hole	MUD
Density / Viscosity	9.2 / 58
pH / Fluid Loss	11.5 / 8.8
Source of Sample	PIT
Rm @ Meas. Temp	1.6 @ 70
Rmf @ Meas. Temp	1.2 @ 70
Rmc @ Meas. Temp	2.1 @ 70
Source of Rmf / Rmc	CALCULATED
Rm @ BHT	1.1 @ 105
Time Circulation Stopped	6:00 AM
Time Logger on Bottom	10:00 AM
Maximum Recorded Temperature	105
Equipment Number	OW2
Location	HOMINY, OK
Recorded By	MACKAY
Witnessed By	MR. WOLFE
	KIDD

<<< Fold Here >>>

All interpretations are opinions based on inferences from electrical or other measurements and we cannot and do not guarantee the accuracy or correctness of any interpretation, and we shall not, except in the case of gross or willful negligence on our part, be liable or responsible for any loss, costs, damages, or expenses incurred or sustained by anyone resulting from any interpretation made by any of our officers, agents or employees. These interpretations are also subject to our general terms and conditions set out in our current Price Schedule.

Comments

FILE # OW1-9219 VAL ENERGY
 THANK YOU FOR USING OSAGE WIRELINE

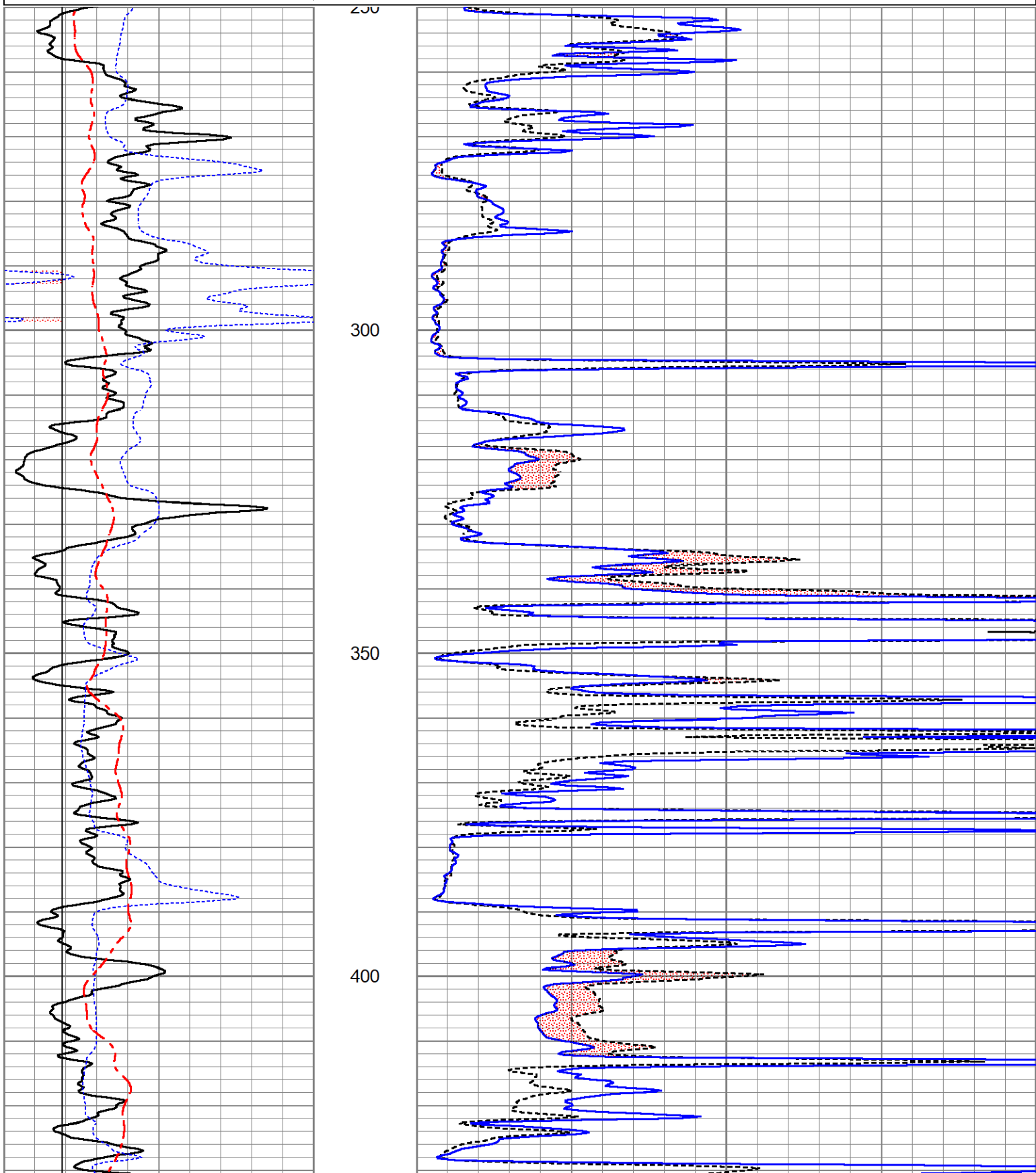


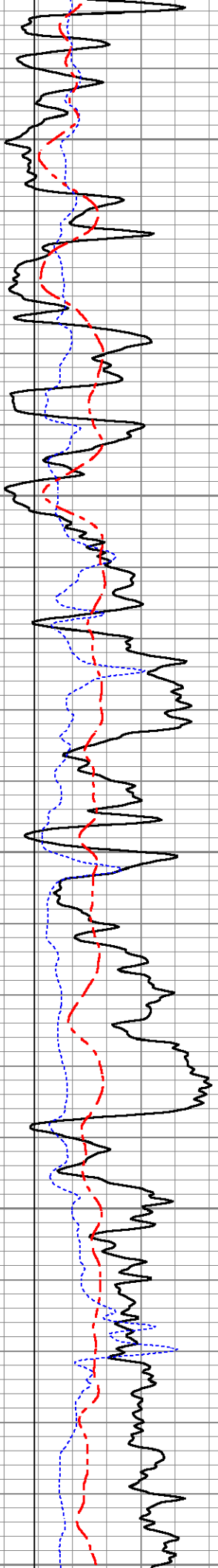
5" MICROLOG

Database File ow1-9219 val energy.db
 Dataset Pathname pass3.6
 Presentation Format mmdigitalmicro
 Dataset Creation Fri Sep 15 11:05:12 2023
 Charted by Depth in Feet scaled 1:240

0	Gamma Ray (GAPI)	150
6	Micro Caliper (in)	16
6	Bit Size (in)	16
0	Spontaneous Potential (mV)	200

0	Micro Normal (Ohm-m)	40
0	Micro Inverse (Ohm-m)	40





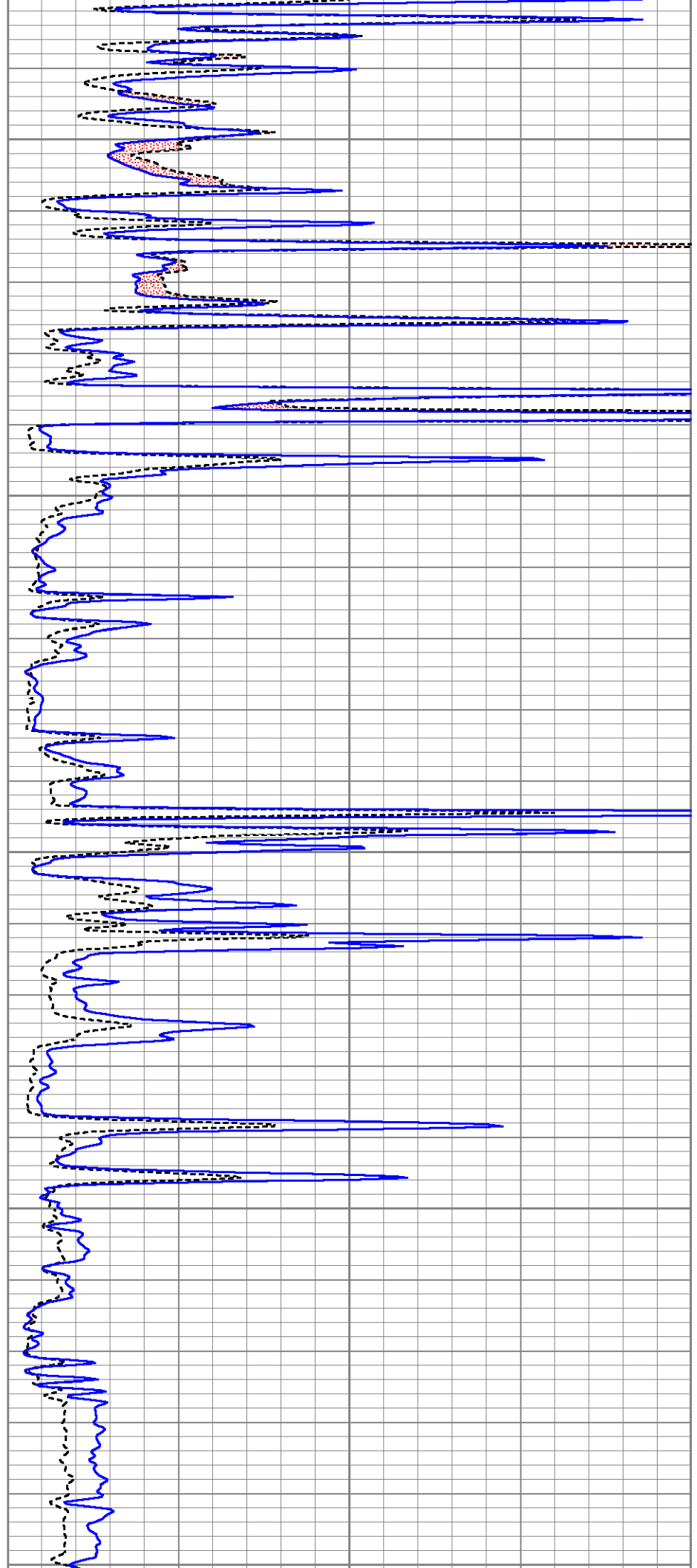
450

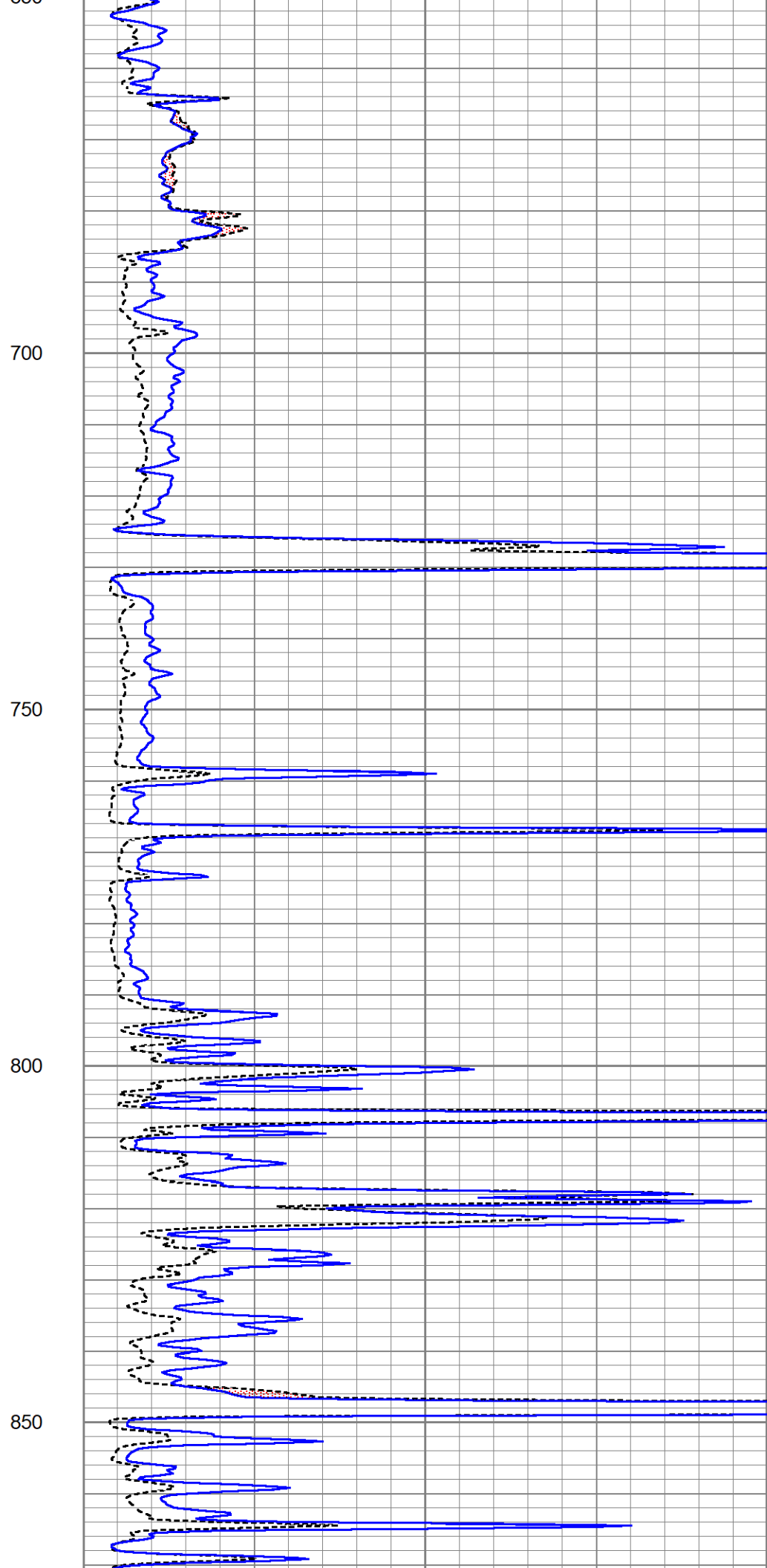
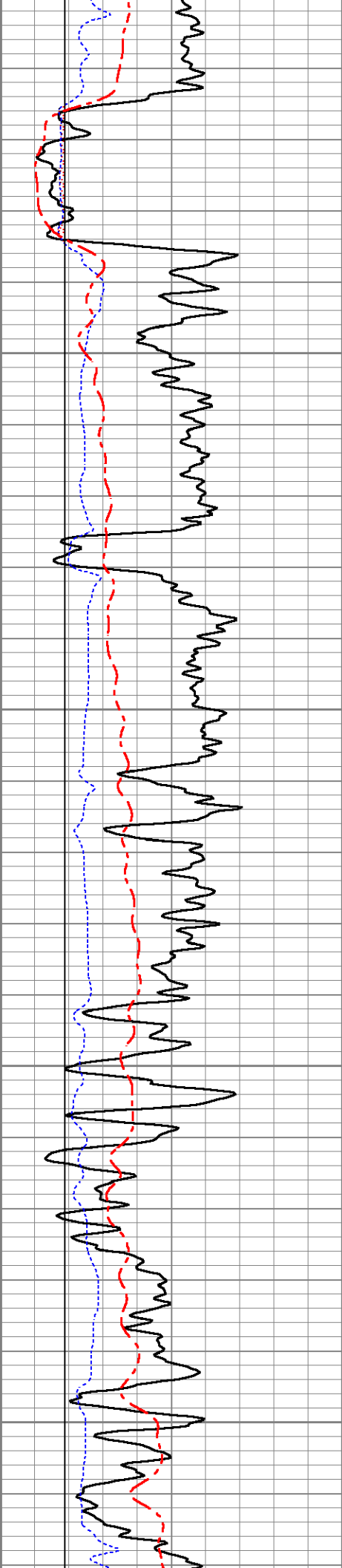
500

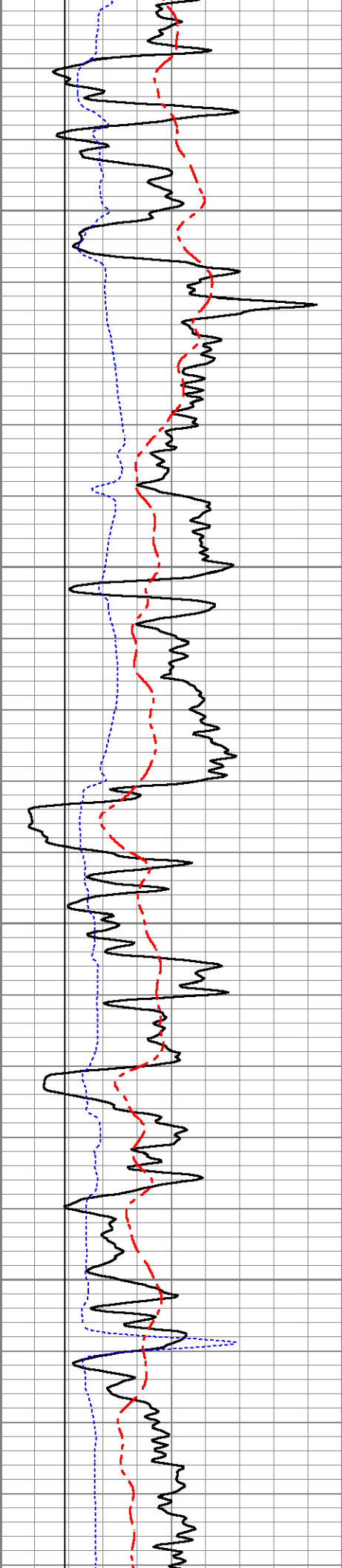
550

600

650





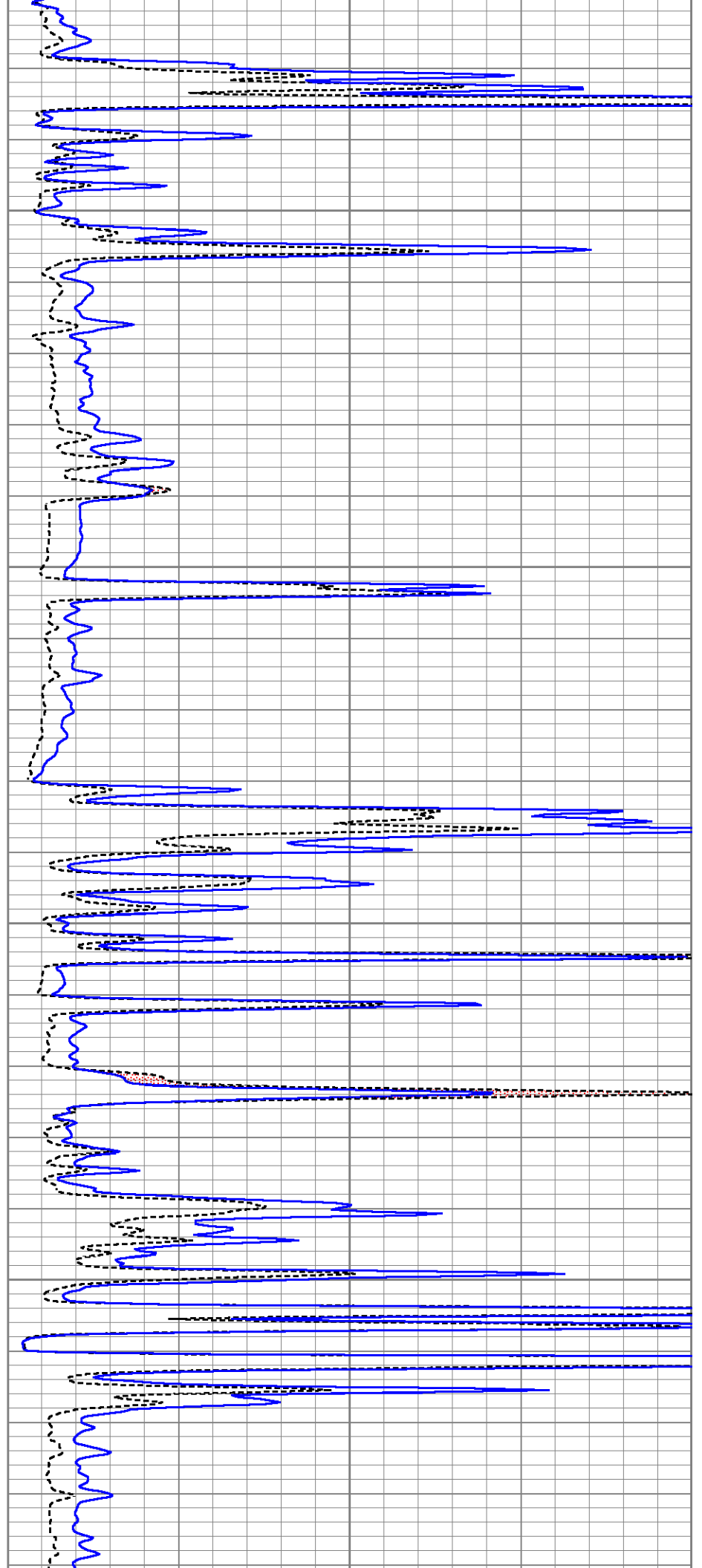


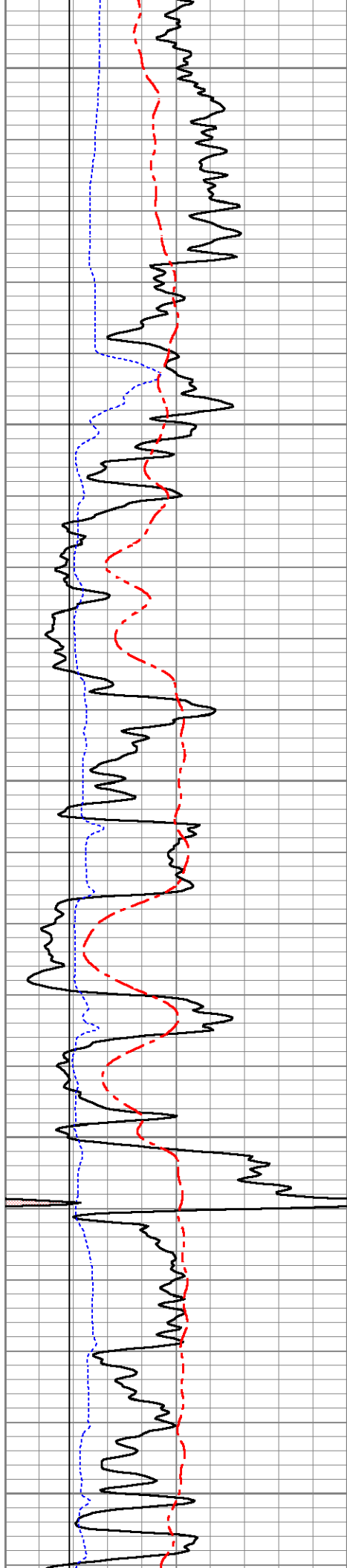
900

950

1000

1050





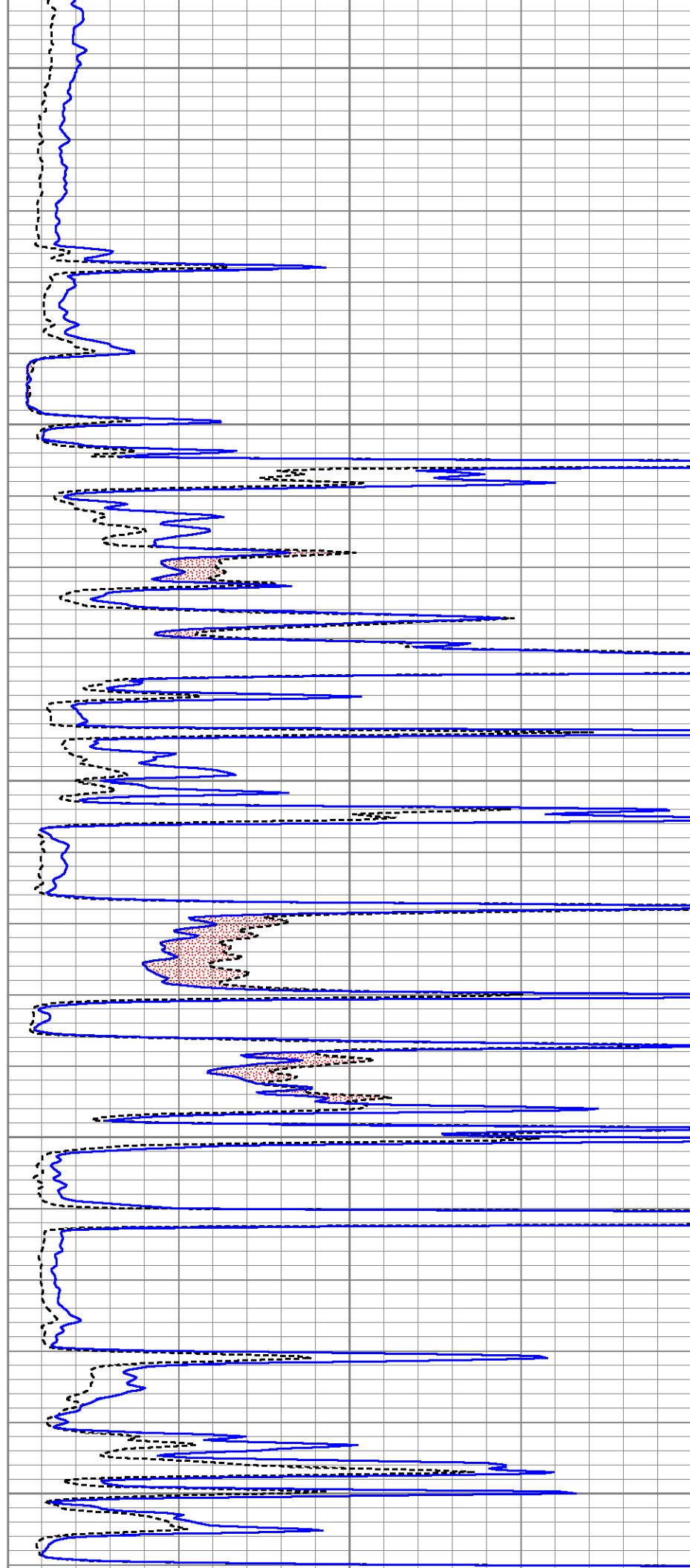
1100

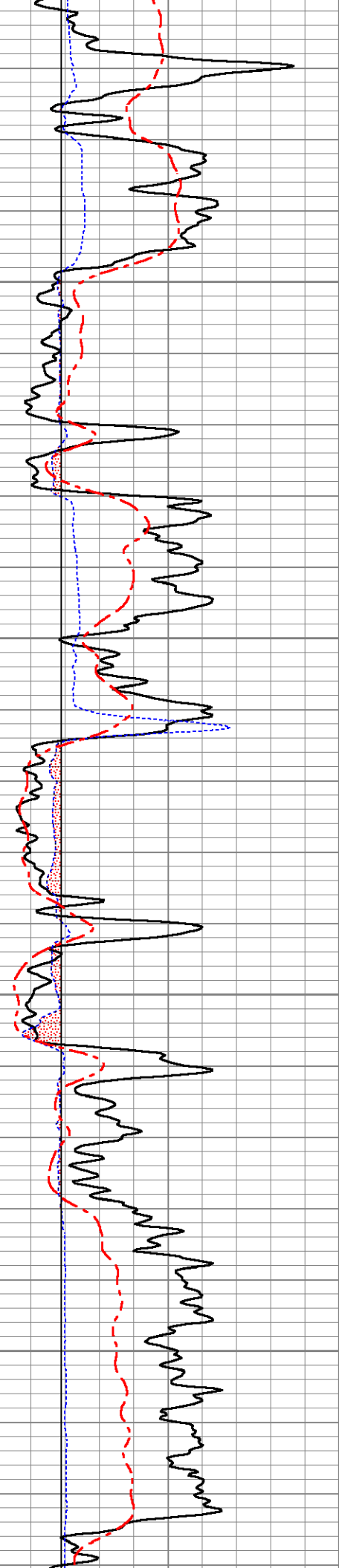
1150

1200

1250

1300



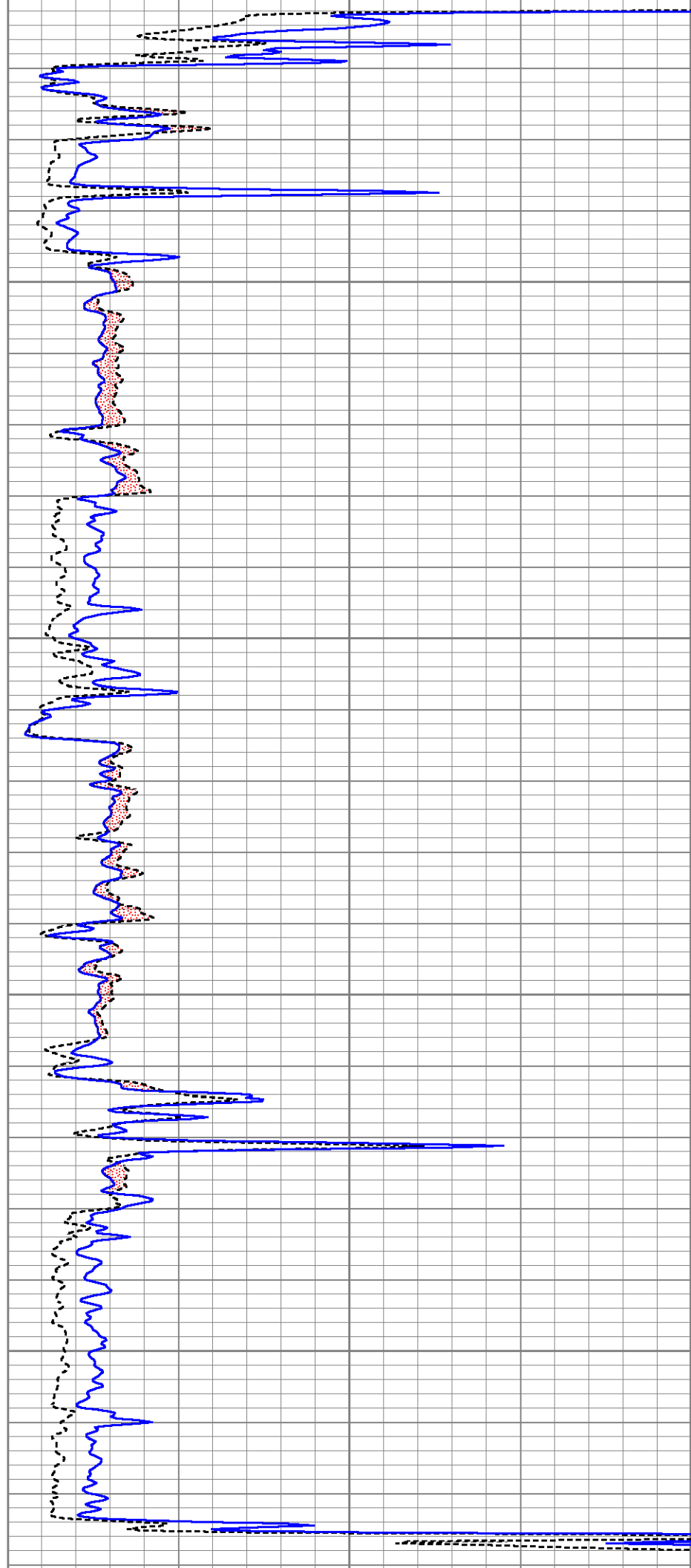


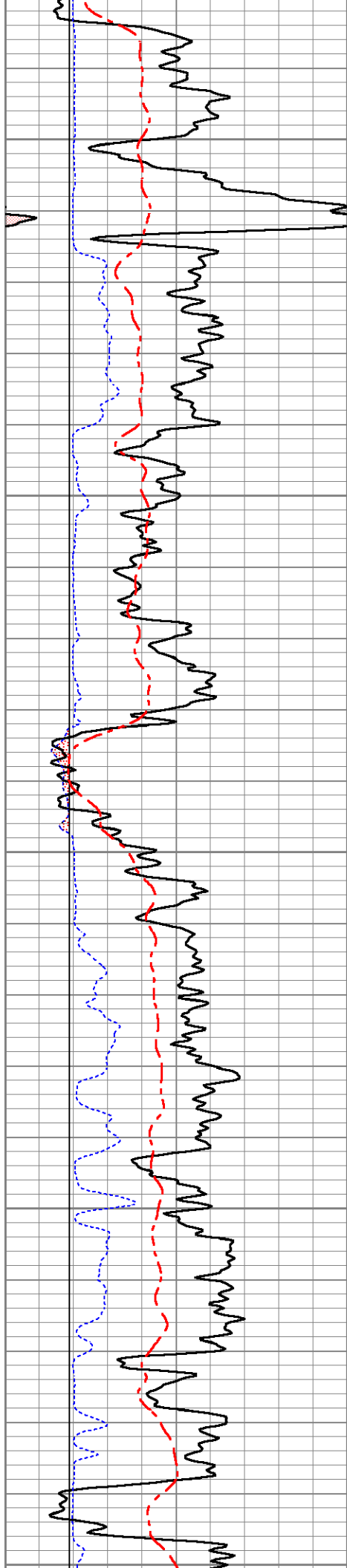
1350

1400

1450

1500





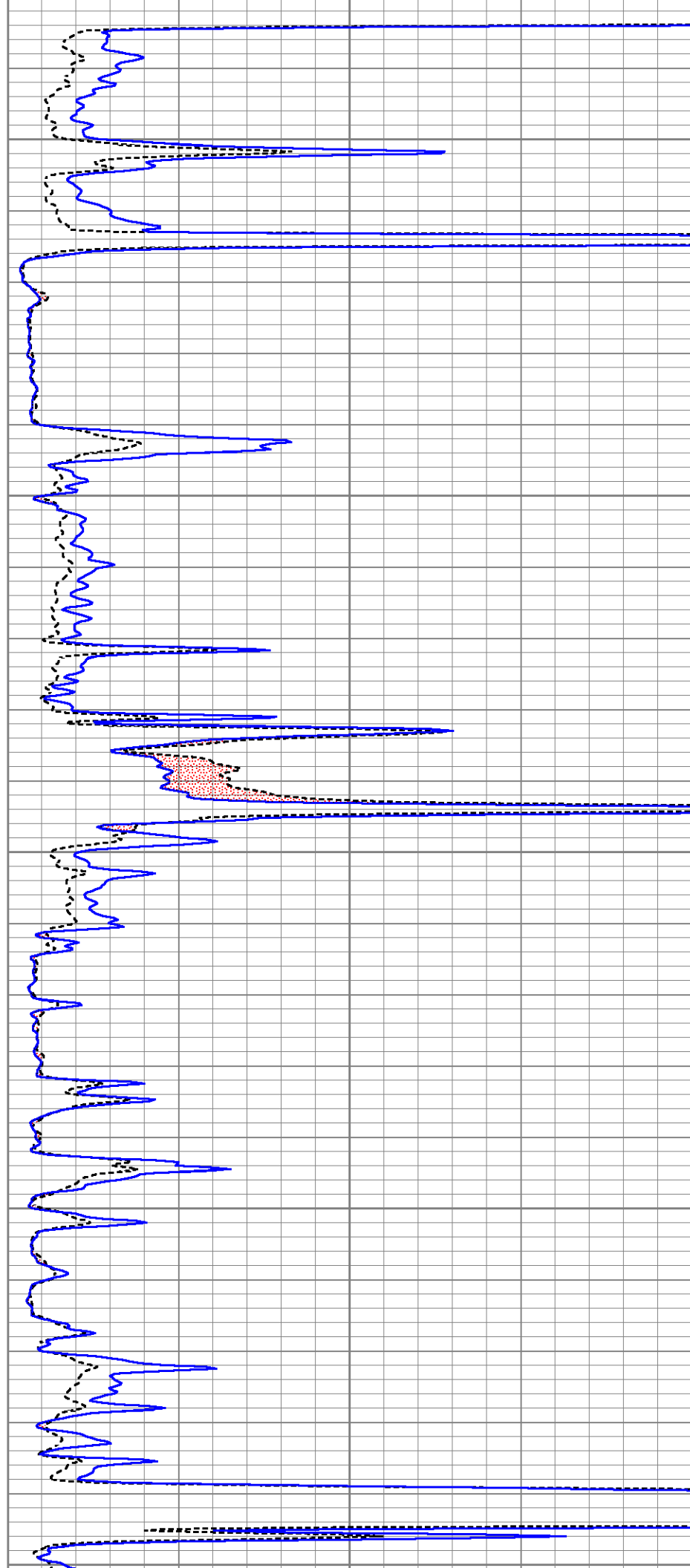
1550

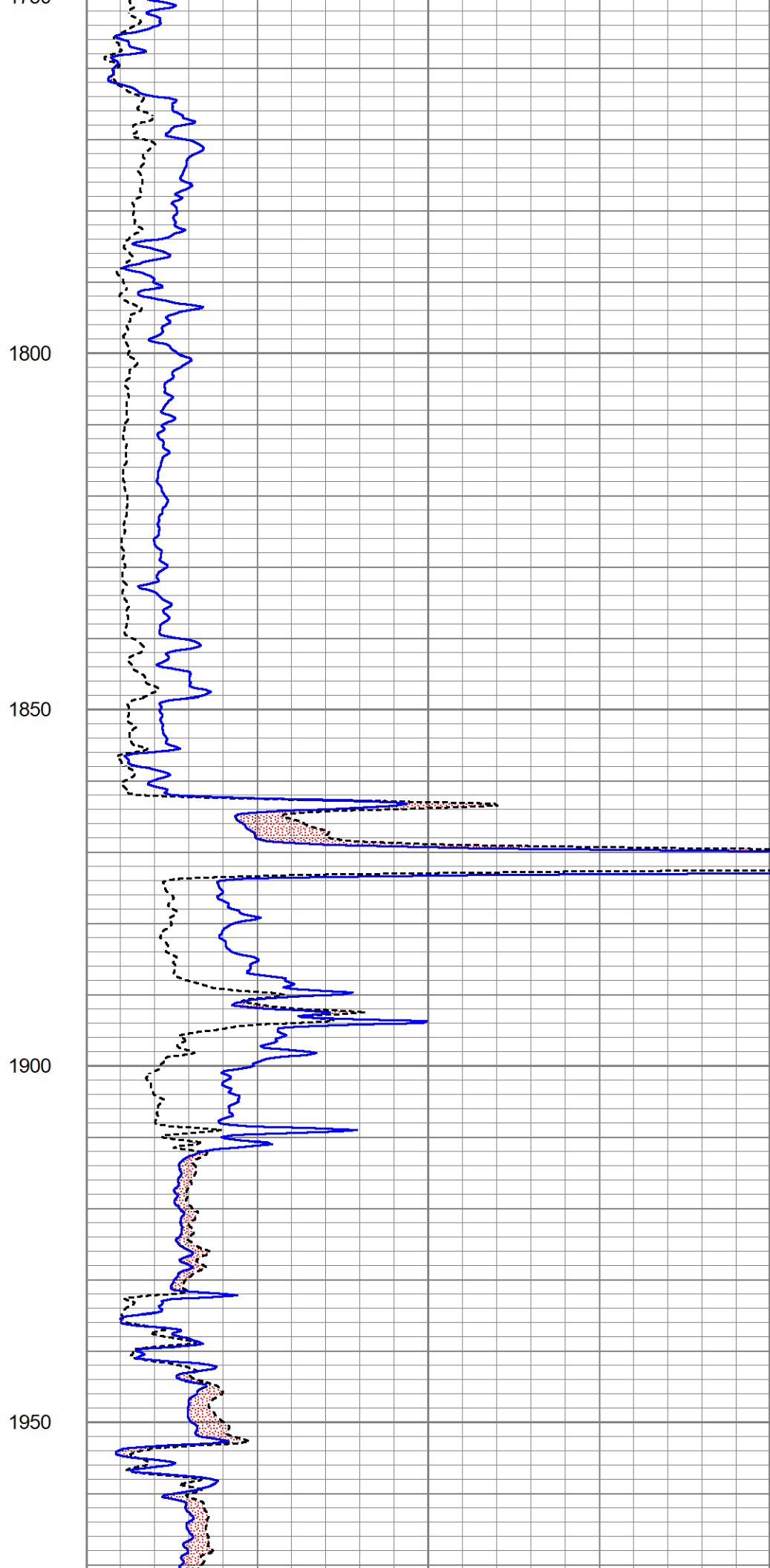
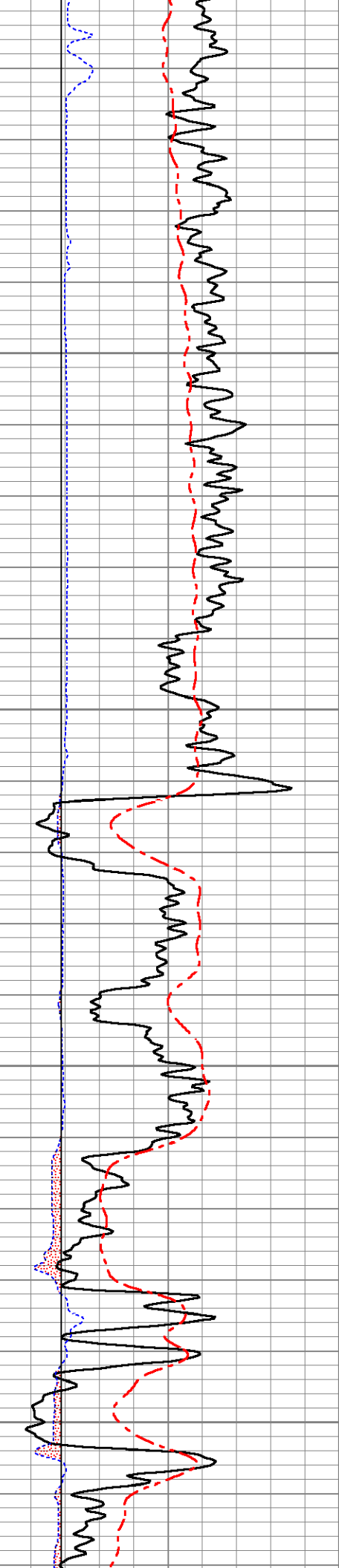
1600

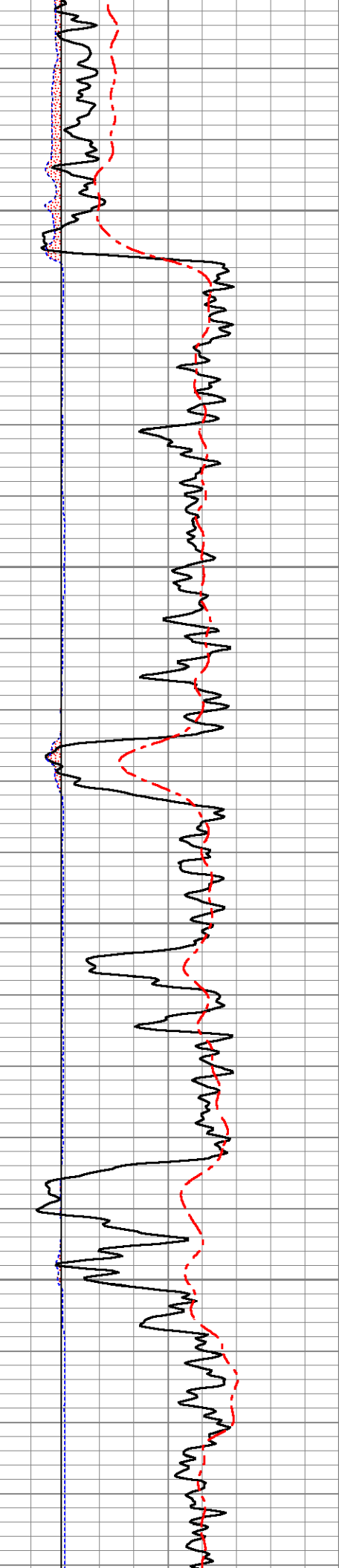
1650

1700

1750





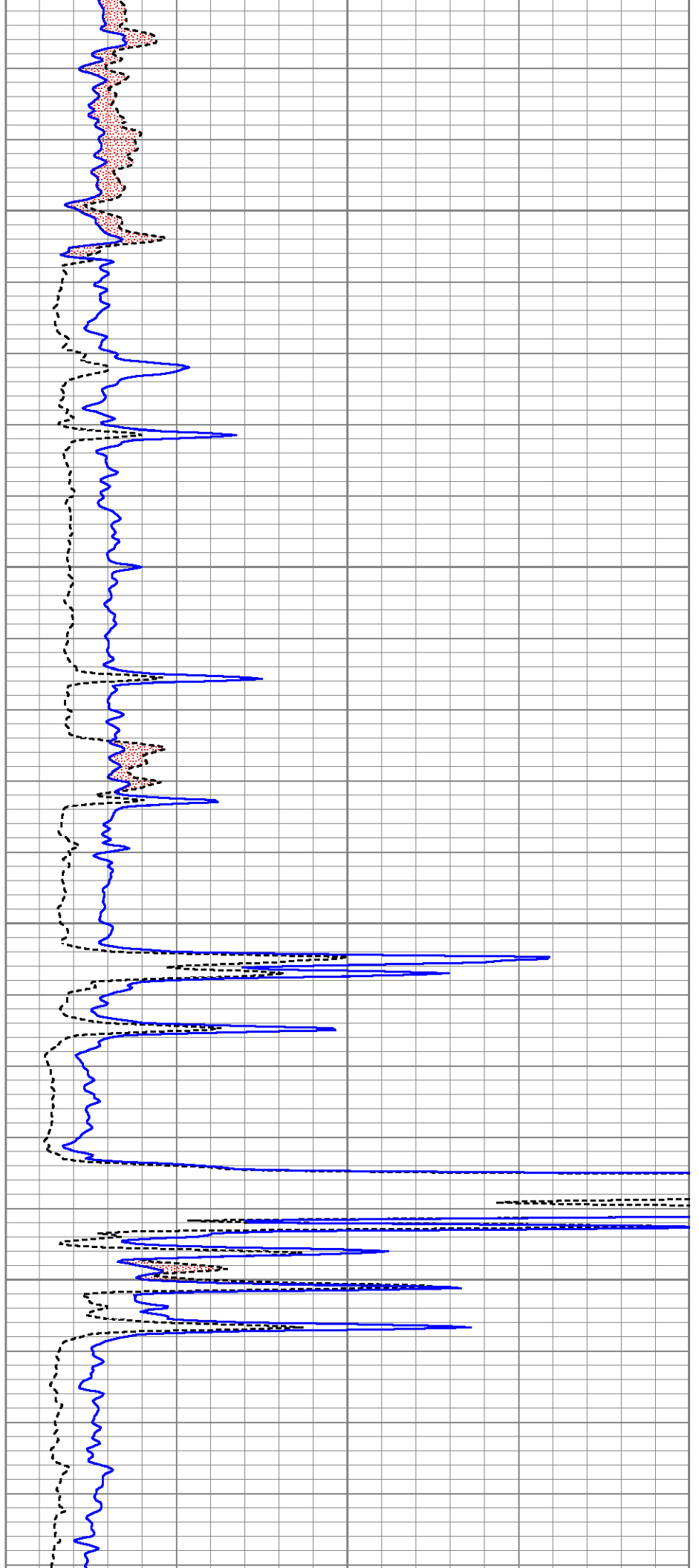


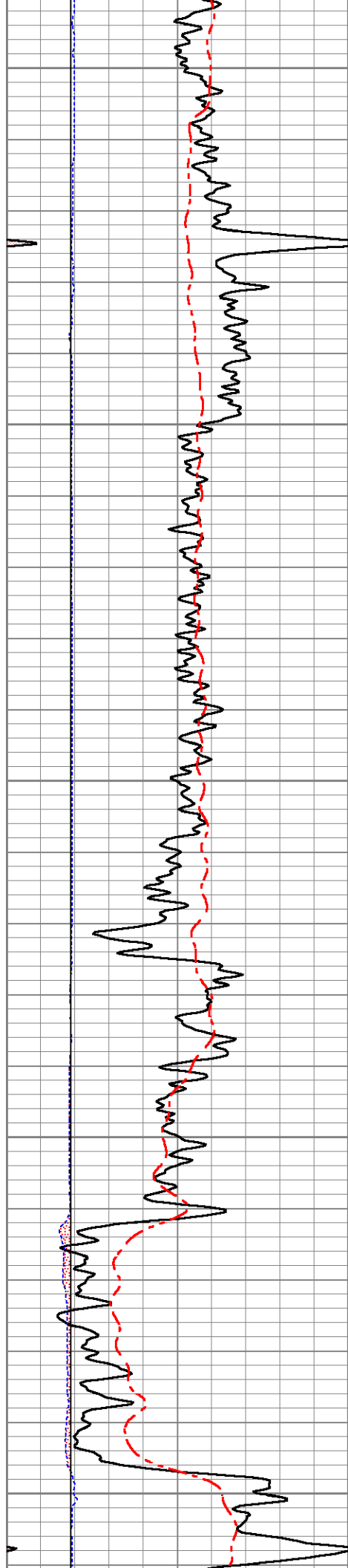
2000

2050

2100

2150





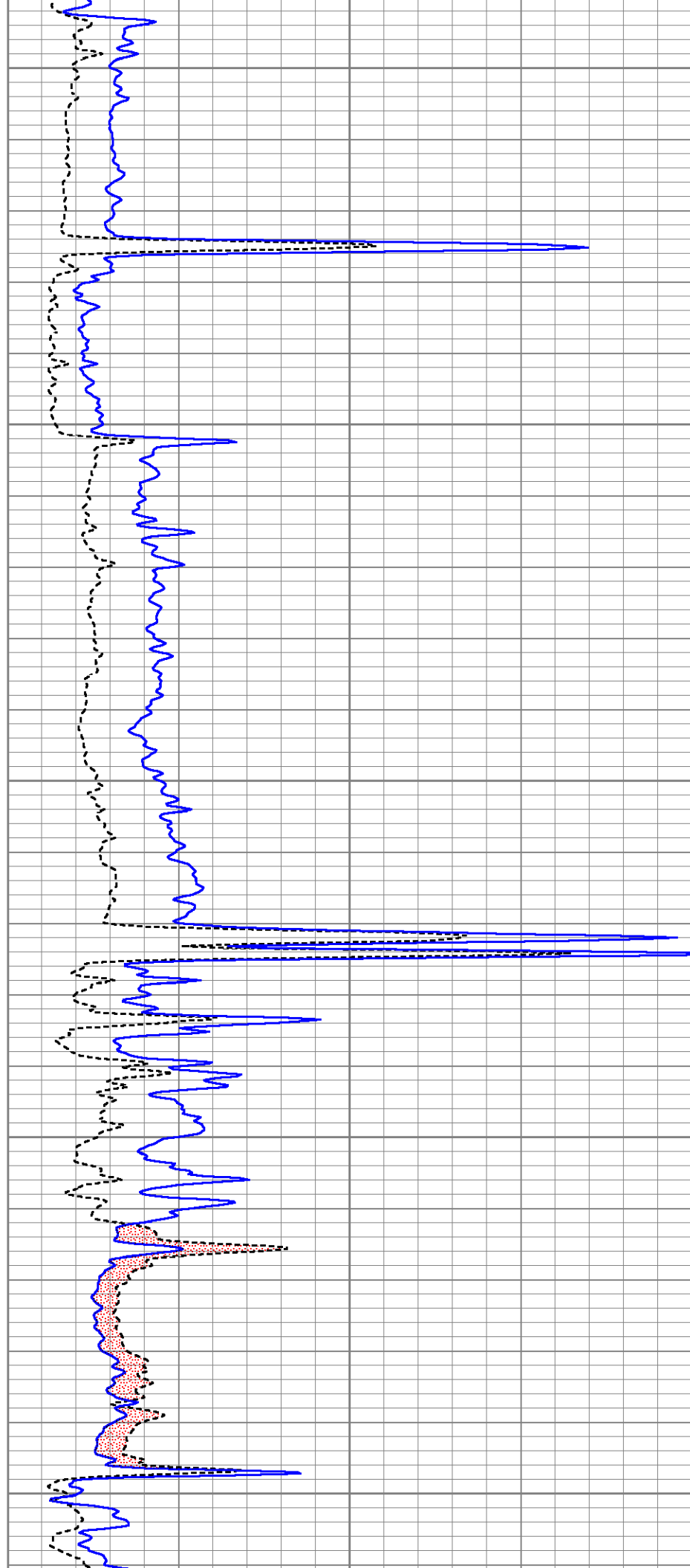
2200

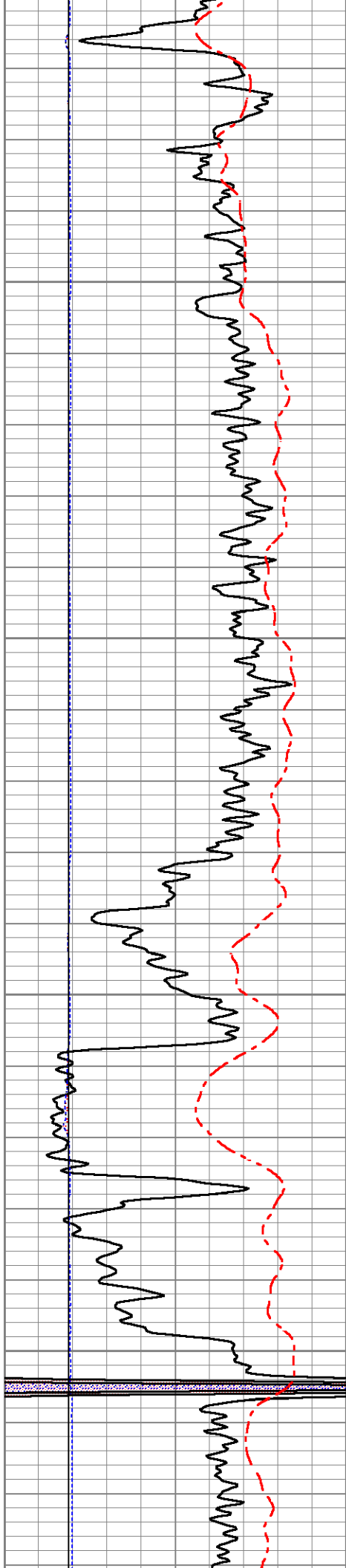
2250

2300

2350

2400



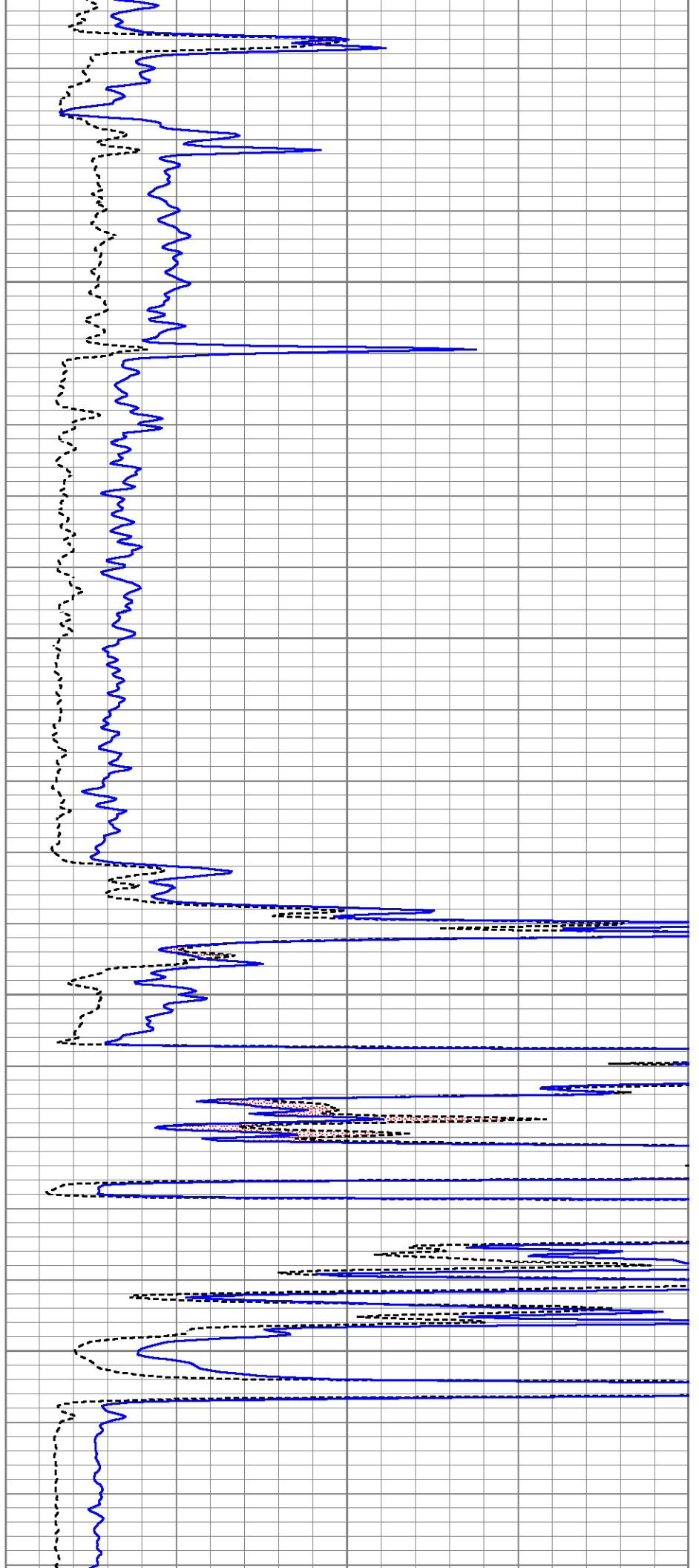


2450

2500

2550

2600





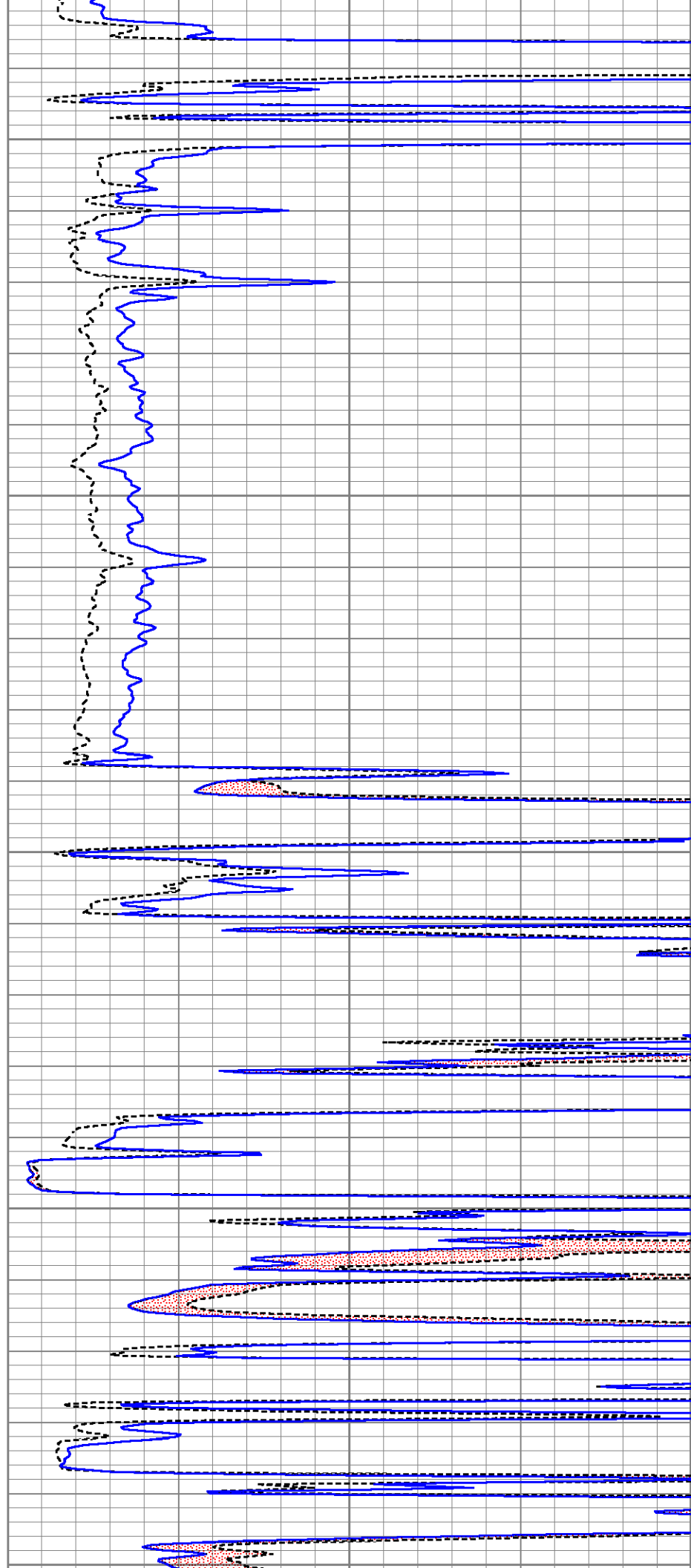
2650

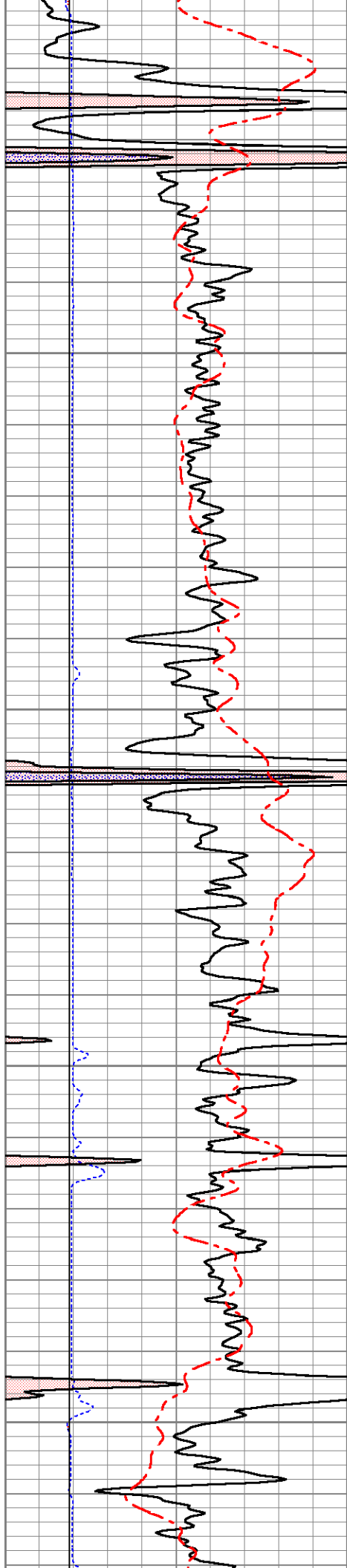
2700

2750

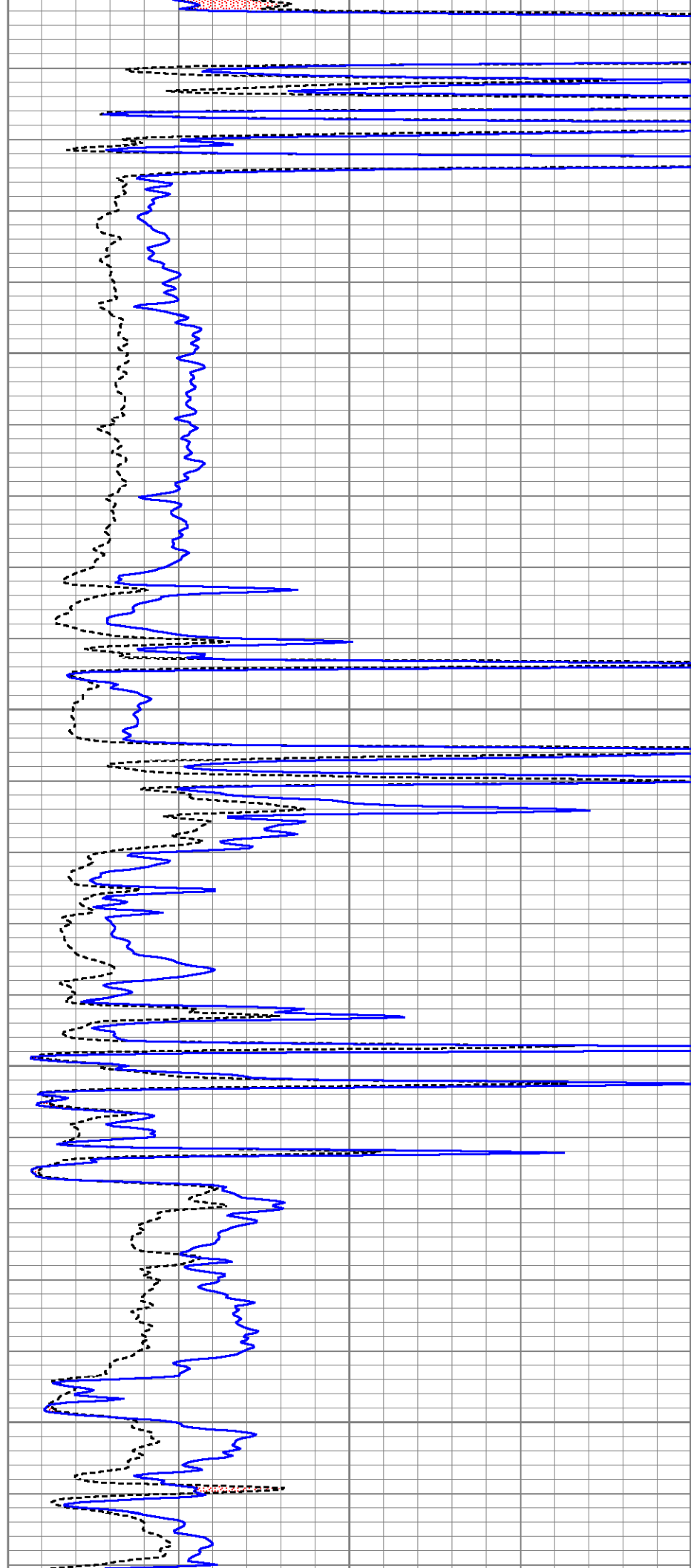
2800

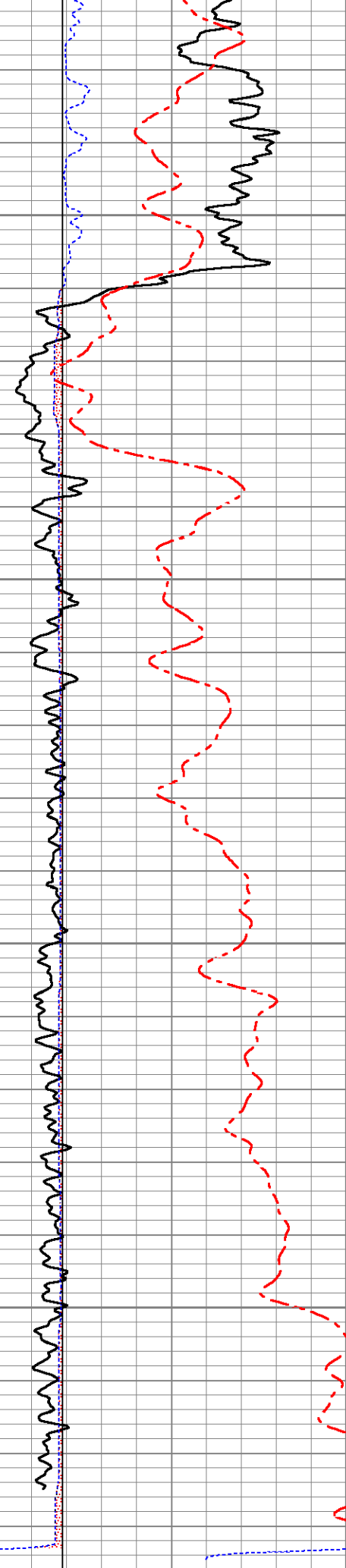
2850





2850
2900
2950
3000
3050



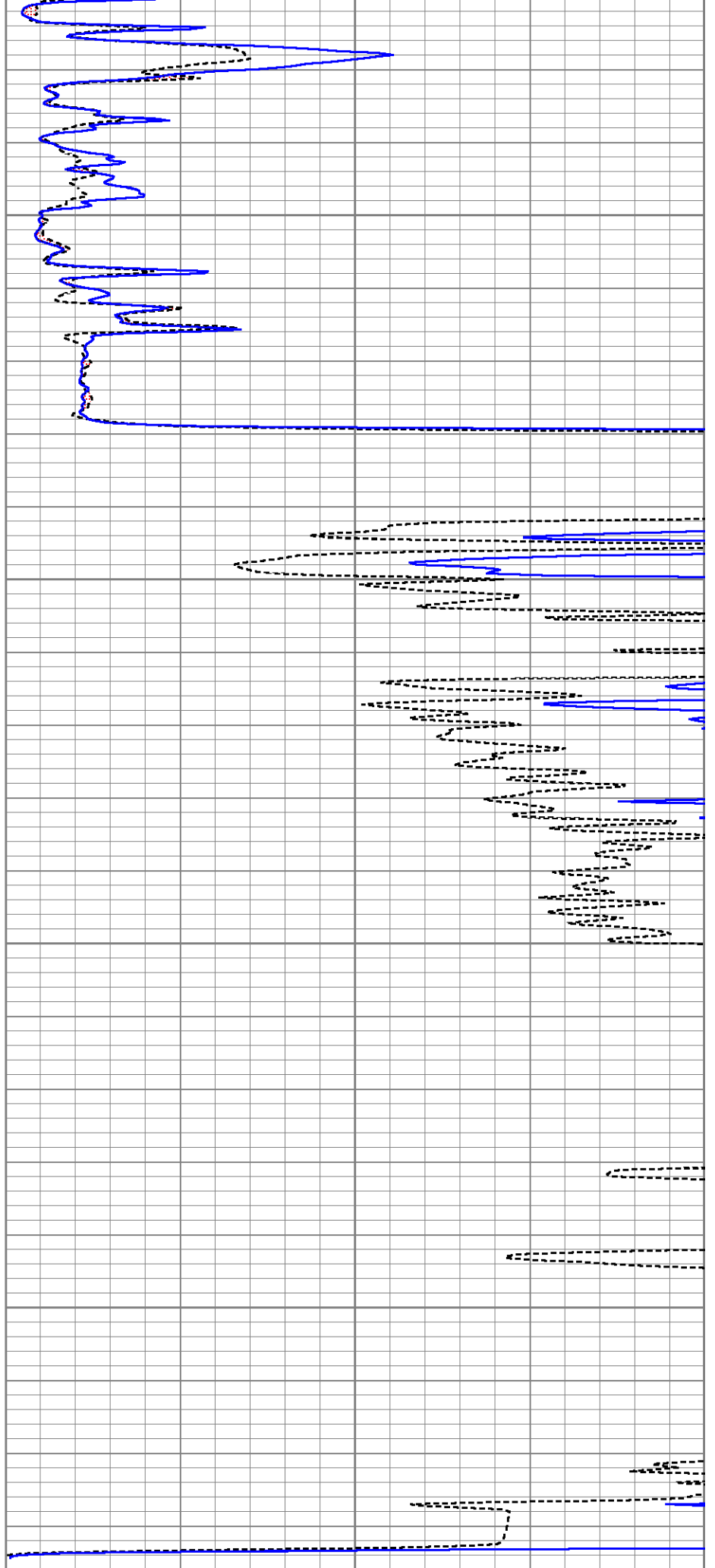


3100

3150

3200

3250



Normal	0.0025	0.1840	V	0.0000	20.0000	Ohm-m	110.2220	-0.2763
Inverse	-0.0030	0.2382	V	0.0000	20.0000	Ohm-m	82.9338	0.2472
Caliper	1.8072	4.5758	V	5.6250	11.2500	in	2.0318	1.9531

Inclinometer Calibration Report

Performed:	Thu Oct 8 13:57:38 2020				
	Low Read.	High Read.	Low Ref.	High Ref.	
X Accelerometer	205.00	1843.00	-1.00	1.00	gee
Y Accelerometer	205.00	1843.00	-1.00	1.00	gee
Z Accelerometer					gee

Gamma Ray Calibration Report

Serial Number:	Refurb01	
Tool Model:	OSAGE_01	
Performed:	Mon Jan 18 09:02:16 2021	
Calibrator Value:	150.0	GAPI
Background Reading:	125.0	cps
Calibrator Reading:	875.0	cps
Sensitivity:	0.2000	GAPI/cps

Sensor	Offset (ft)	Schematic	Description	Length (ft)	O.D. (in)	Weight (lb)
ACCY	31.04		ADMYR_TELEMETRY-OSAGE_01 (Refurb01) Admyr Telemetry With Gr, Deviation, ADC board and Pulses Board in it.	3.69	3.25	53.00
ACCX	31.04					
GR	29.86					
FRAMES	28.54					
SSTAT	28.54					
PSTAT	28.54					
ASTAT	28.54					
MI	23.00					
MN	23.00					
MCAL	22.00					
ASTAT2	21.33					
SP	10.92		DIL-G (RedTool)	21.33	4.00	290.00
CILD	10.92		Gearhart			
CILM	7.00					
RLL3	1.65					
TR Mon	0.00					

TK_Mon	0.00				
Dataset: ow1-9219 val energy.db: field/well/run1/pass3					
Total length: 32.23 ft					
Total weight: 480.00 lb					
O.D.: 5.13 in					