



DUAL INDUCTION LOG

Company VINCENT OIL CORPORATION
 Well C & D HERRMANN #1-6
 Field UNNAMED
 County FORD State KANSAS

Location: API #: 15-057-21092-0000
 1777' FSL & 754' FEL
 NE - SW - NE - SE
 SEC 6 TWP 29S RGE 23W
 Permanent Datum GROUND LEVEL Elevation 2482
 Log Measured From KELLY BUSHING 12' A.G.L.
 Drilling Measured From KELLY BUSHING

Company VINCENT OIL CORPORATION
 Well C & D HERRMANN #1-6
 Field UNNAMED
 County FORD
 State KANSAS

Date	8/4/23
Run Number	ONE
Depth Driller	5285
Depth Logger	5286
Bottom Logged Interval	5284
Top Log Interval	00
Casing Driller	8 5/8"@608'
Casing Logger	606
Bit Size	7 7/8"
Type Fluid in Hole	CHEMICAL MUD
Density / Viscosity	9.2/51
pH / Fluid Loss	11.0/9.2
Source of Sample	FLOWLINE
Rm @ Meas. Temp	.400@85F
Rmf @ Meas. Temp	.300@85F
Rmc @ Meas. Temp	.480@85F
Source of Rmf / Rmc	MEASUREMENT
Rm @ BHT	.266@128F
Time Circulation Stopped	3 HOURS
Time Logger on Bottom	1:30 P.M.
Maximum Recorded Temperature	128F
Equipment Number	922339
Location	HAYS, KANSAS
Recorded By	JEFF LUEBBERS
Witnessed By	BRAD RINE

Other Services
 CDL/CNL/PE
 MEL/SONIC
 Elevation
 K.B. 2494
 D.F. 2492
 G.L. 2482

<<< Fold Here >>>

All interpretations are opinions based on inferences from electrical or other measurements and we cannot and do not guarantee the accuracy or correctness of any interpretation, and we shall not, except in the case of gross or willful negligence on our part, be liable or responsible for any loss, costs, damages, or expenses incurred or sustained by anyone resulting from any interpretation made by any of our officers, agents or employees. These interpretations are also subject to our general terms and conditions set out in our current Price Schedule.

15-057-21092-0000 Comments

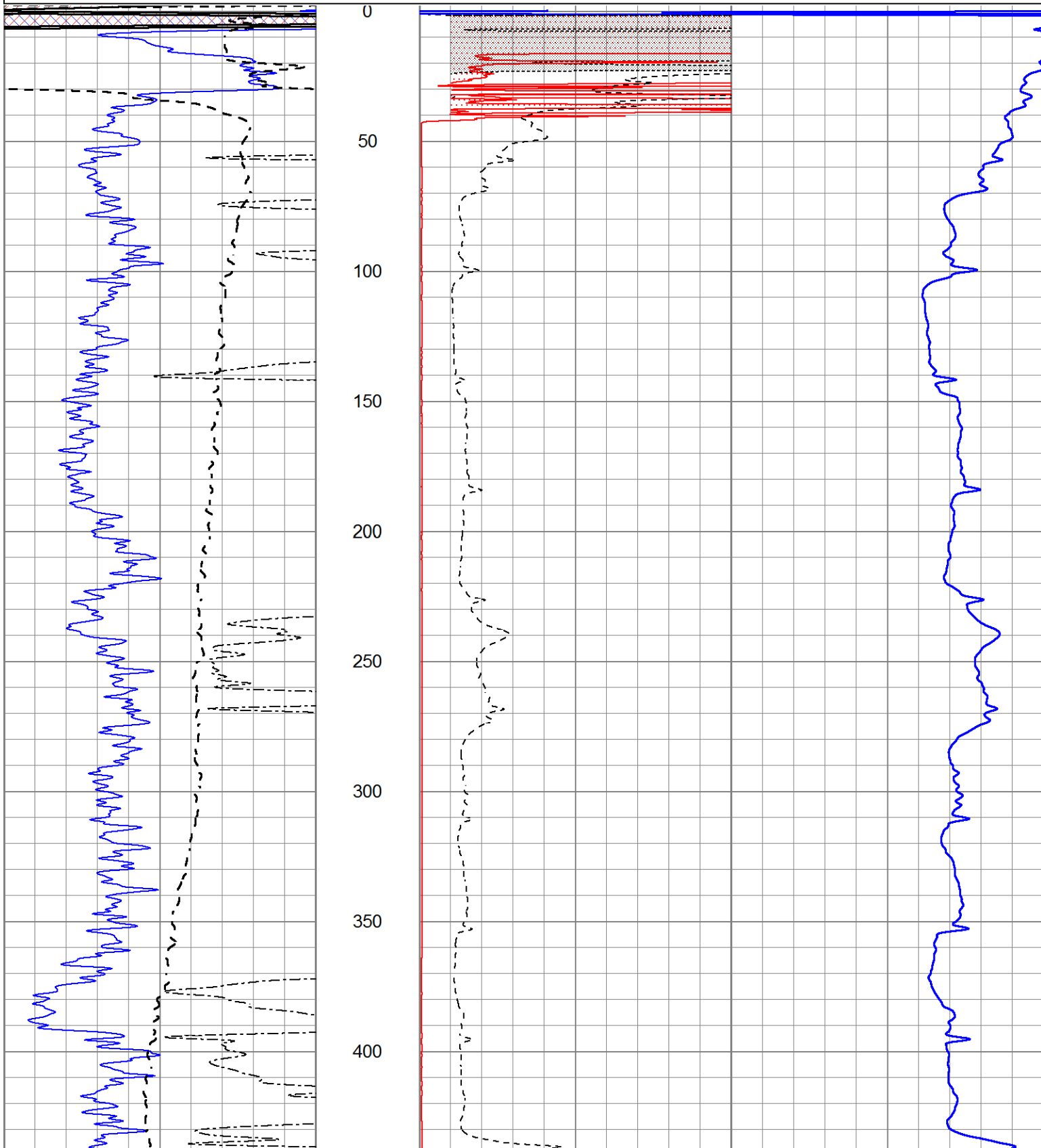
THANK YOU FOR USING ELI WIRELINE HAYS, KANSAS (785) 628-6395
 DIRECTIONS
 KINGSDOWN, KS., 1N. ON "RD. 125" TO "WILDFIRE RD., 6 1/2W., S. INTO @ FARM DRIVE

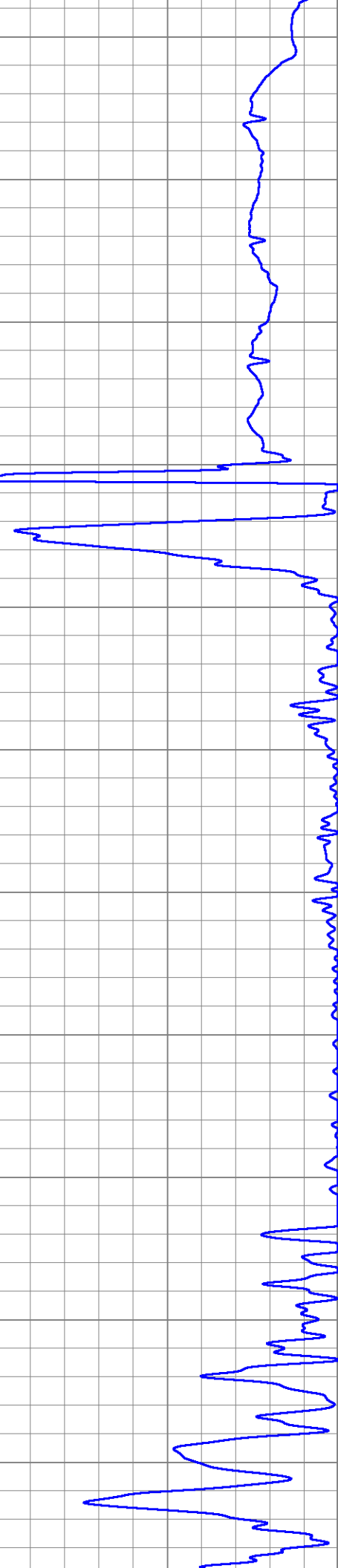
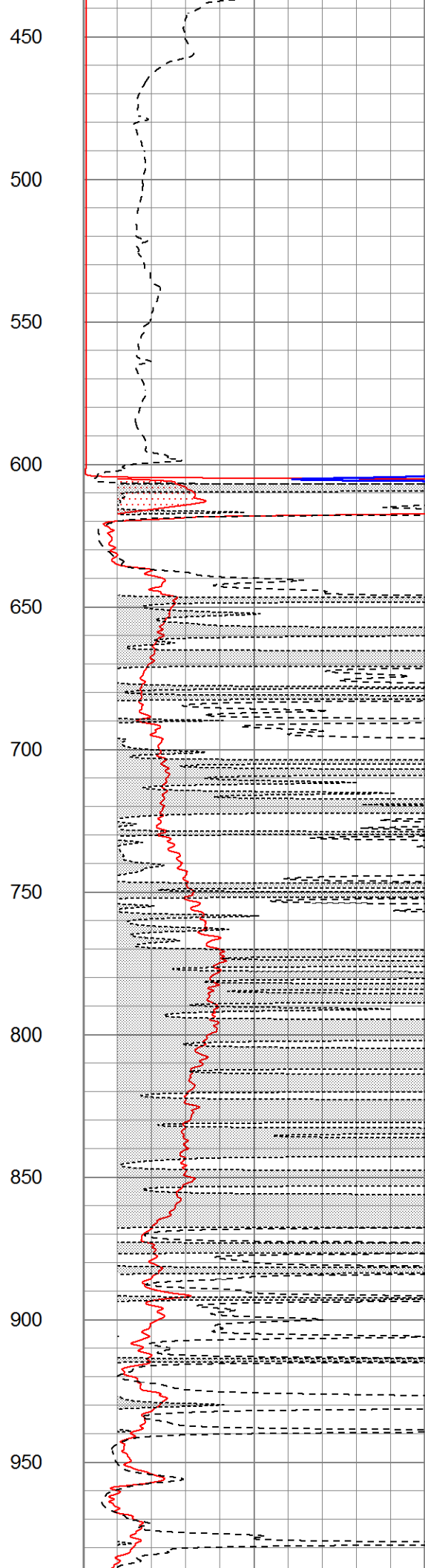
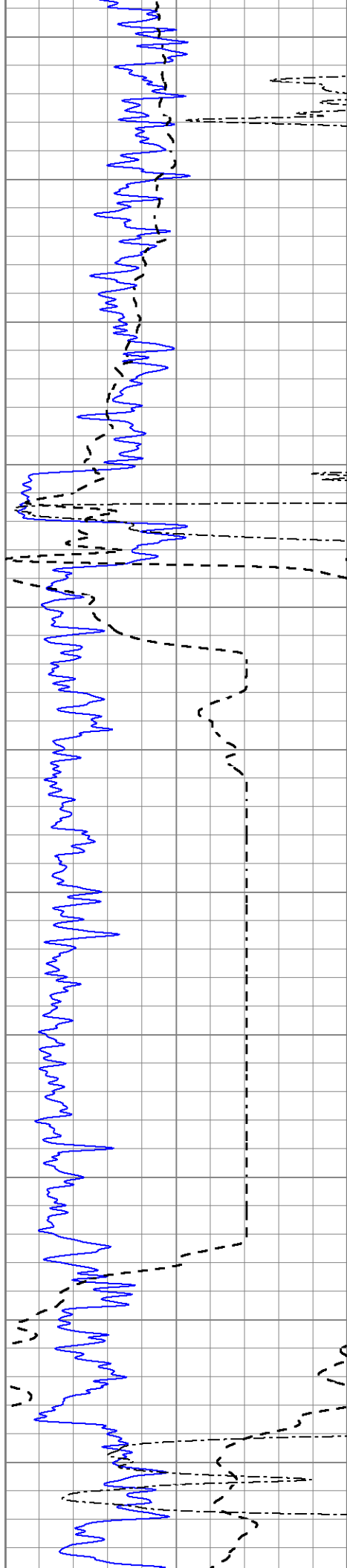


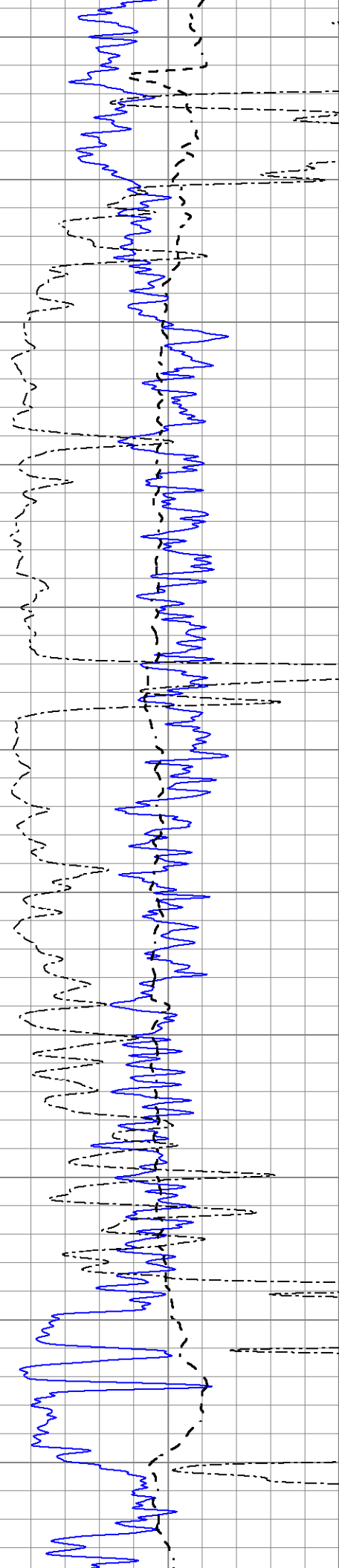
MAIN SECTION

Database File 7313pe.db
 Dataset Pathname pass3.1M
 Presentation Format _dil2
 Dataset Creation Fri Aug 04 15:16:37 2023
 Charted by Depth in Feet scaled 1:600

0	Gamma Ray (GAPI)	150	1000	CILD (mmho/m)	0
-100	SP (mV)	100	0	RLL3 (Ohm-m)	50
0	RWA (Ohm-m)	1	0	RILD (Ohm-m)	50
			50	RILD X10 (Ohm-m)	500
			50	RLL3 X10 (Ohm-m)	500







1000

1050

1100

1150

1200

1250

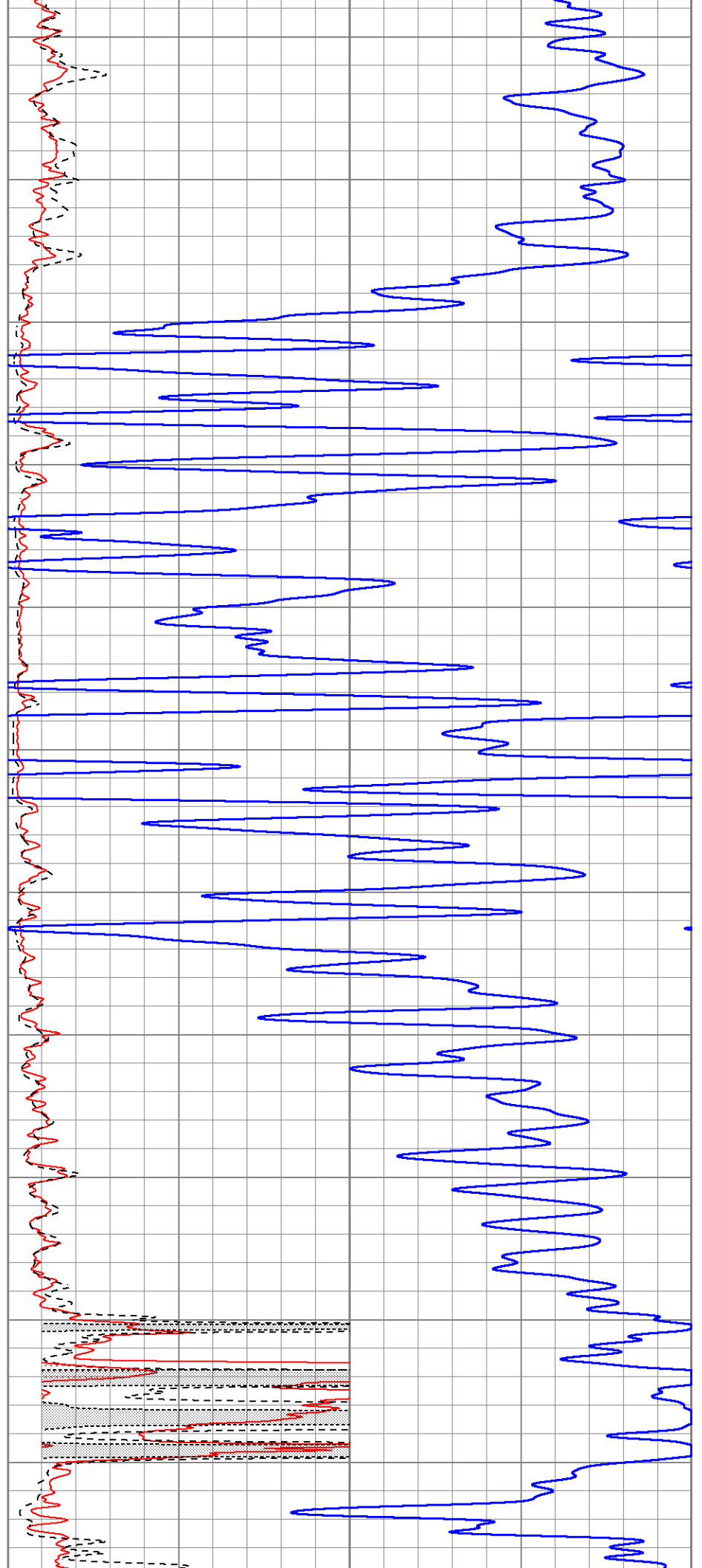
1300

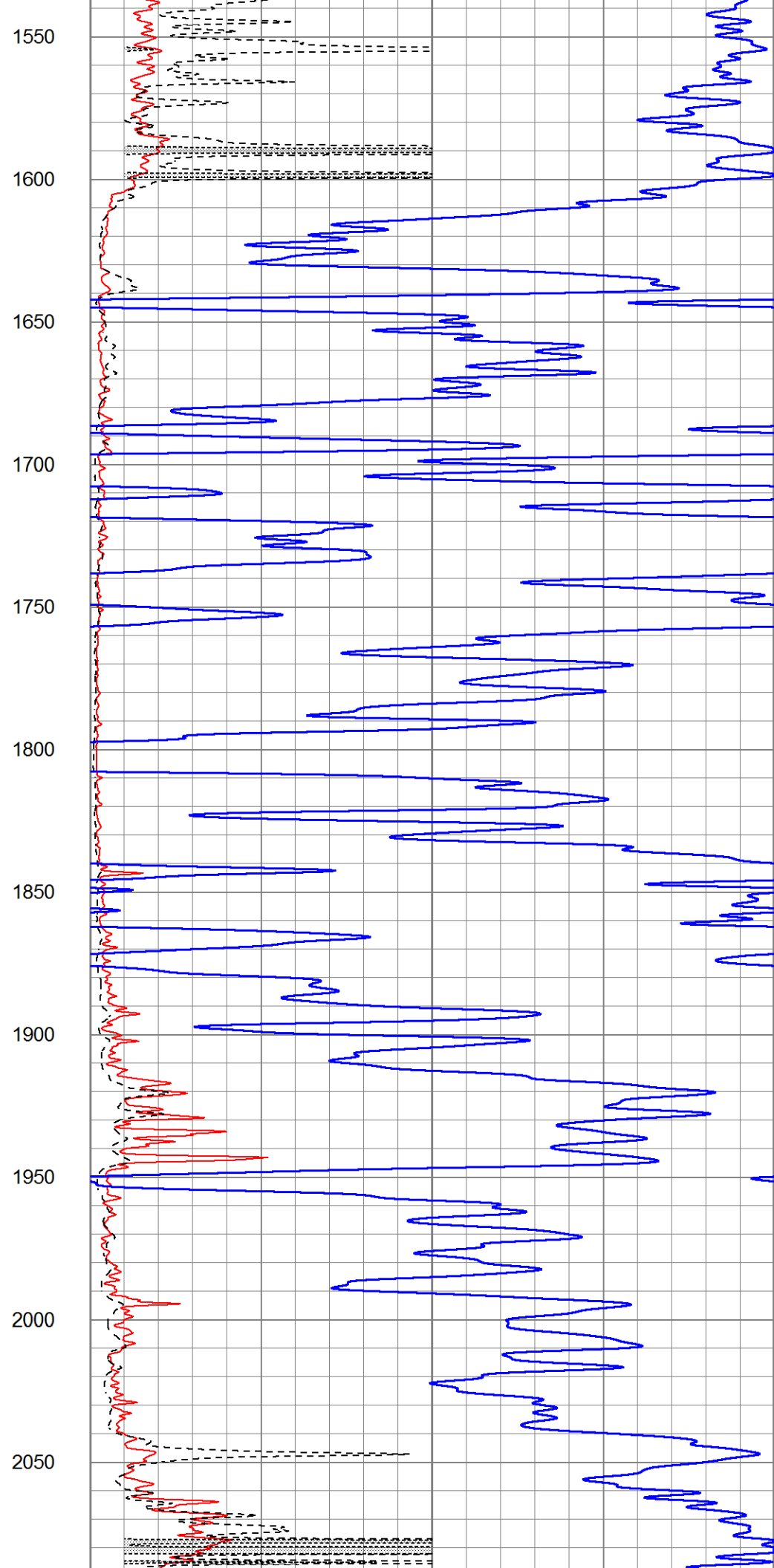
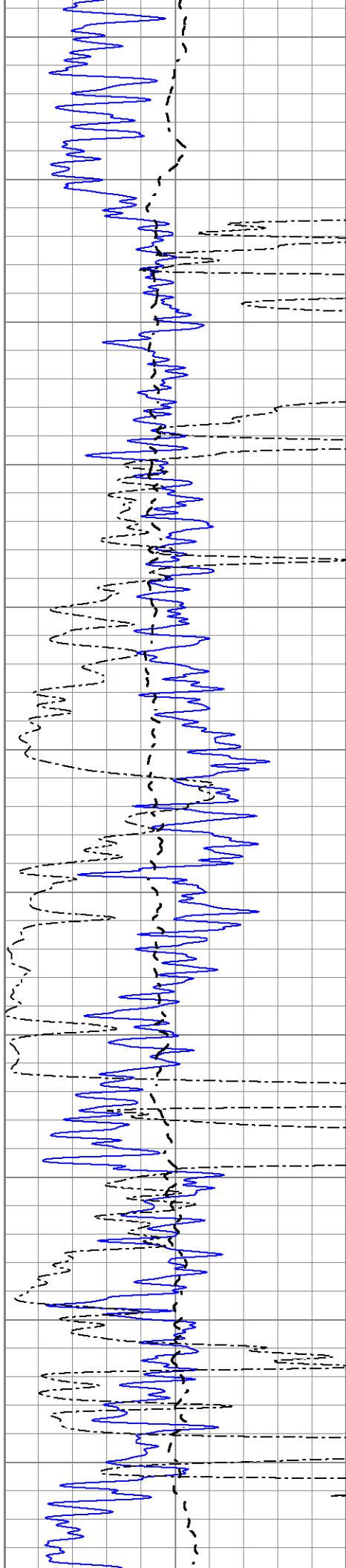
1350

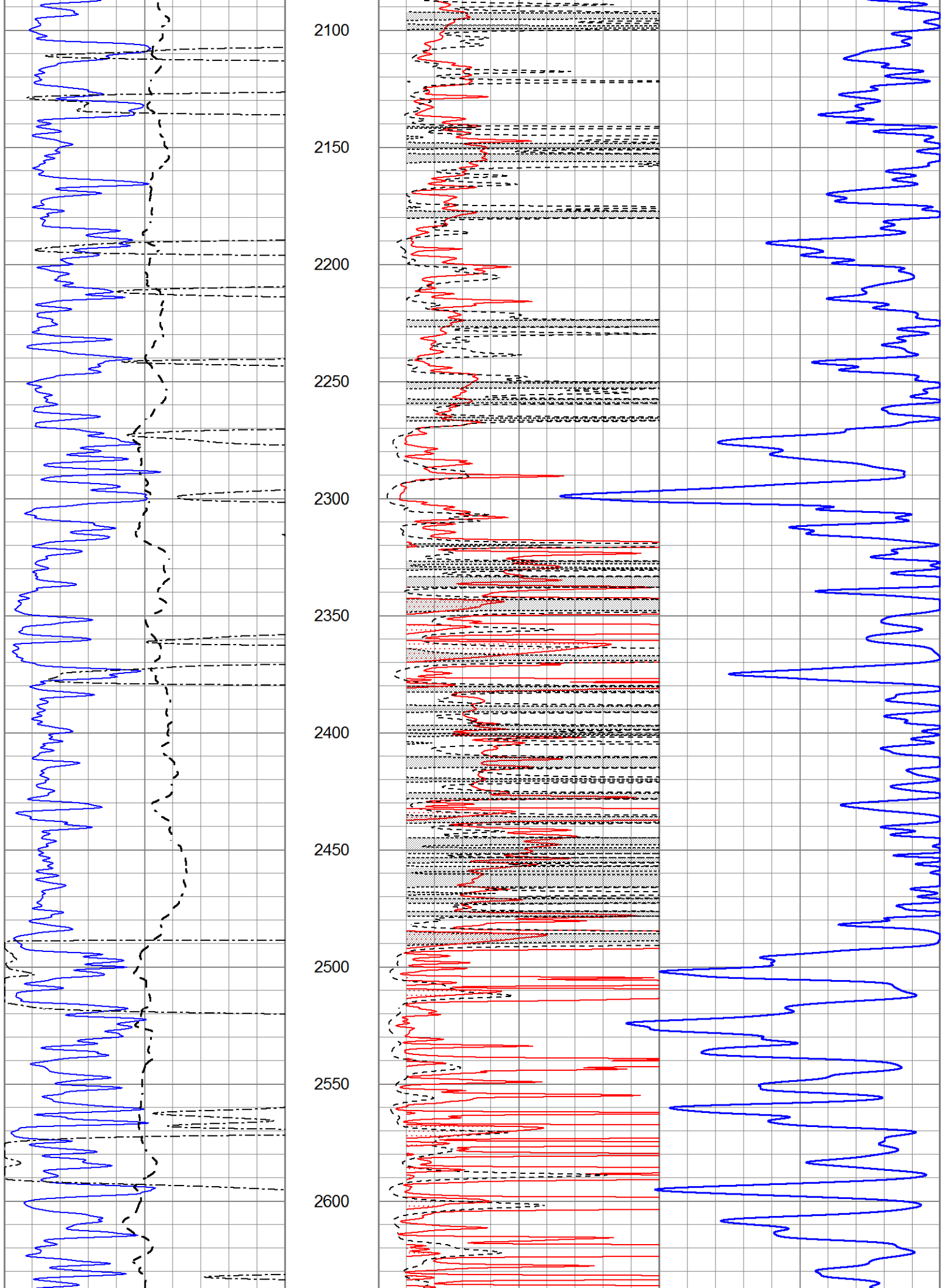
1400

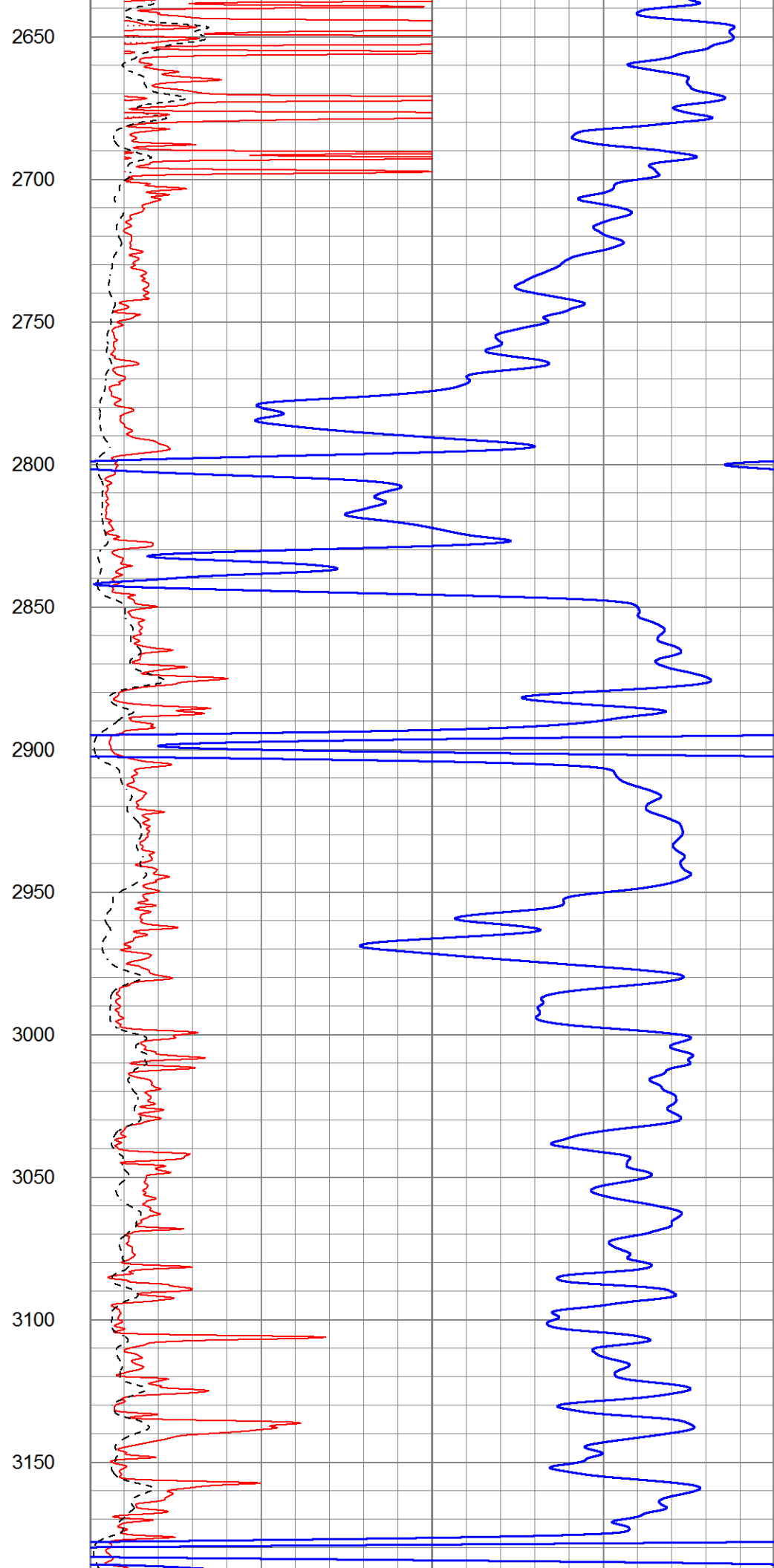
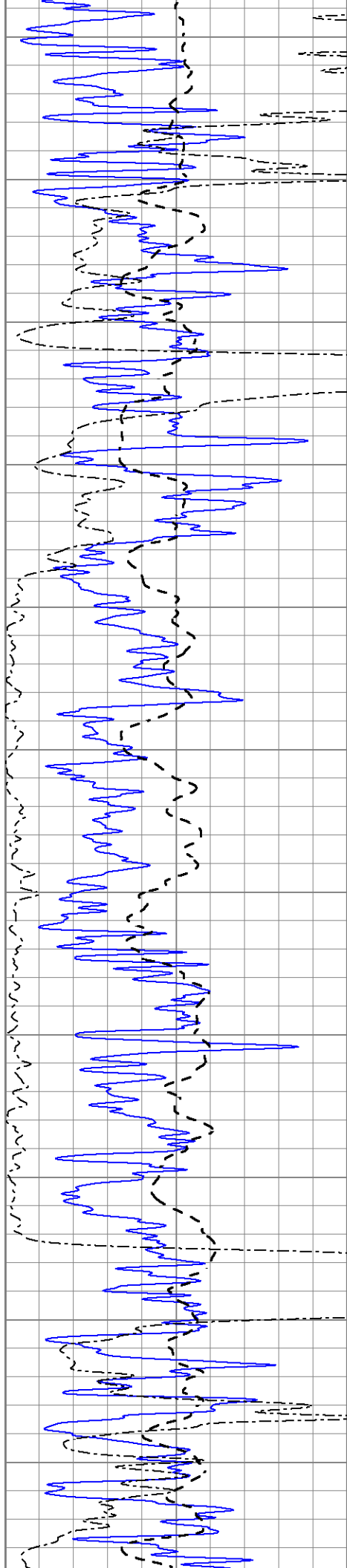
1450

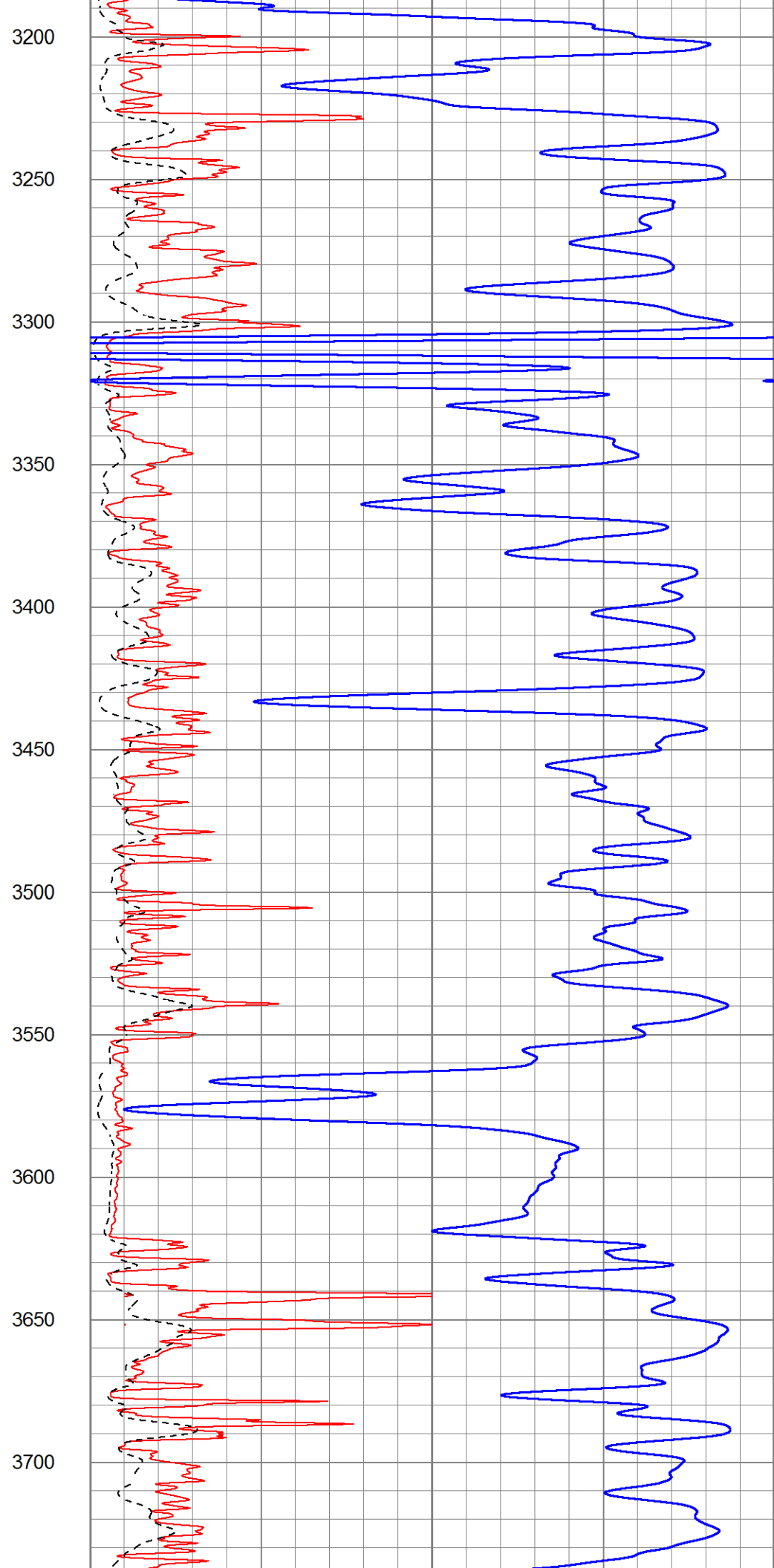
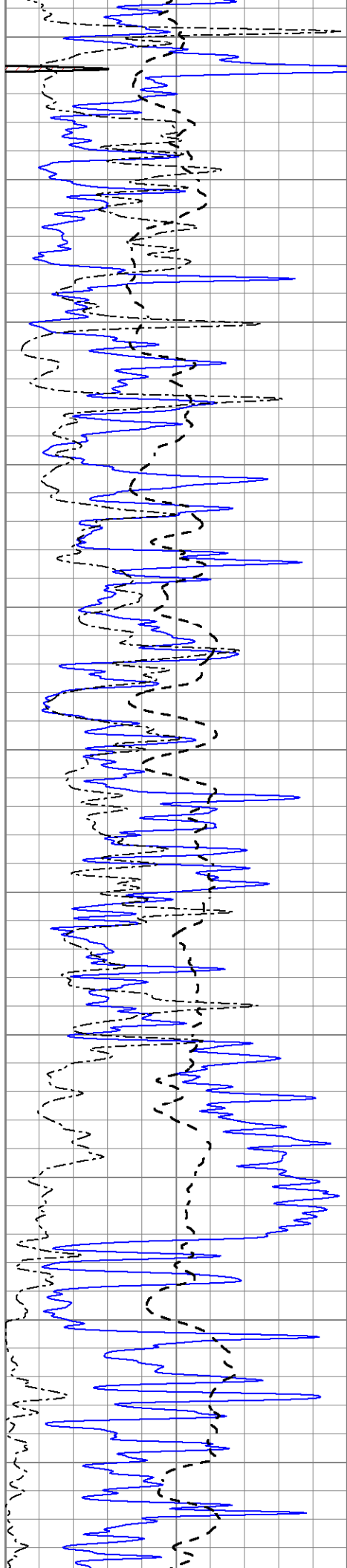
1500

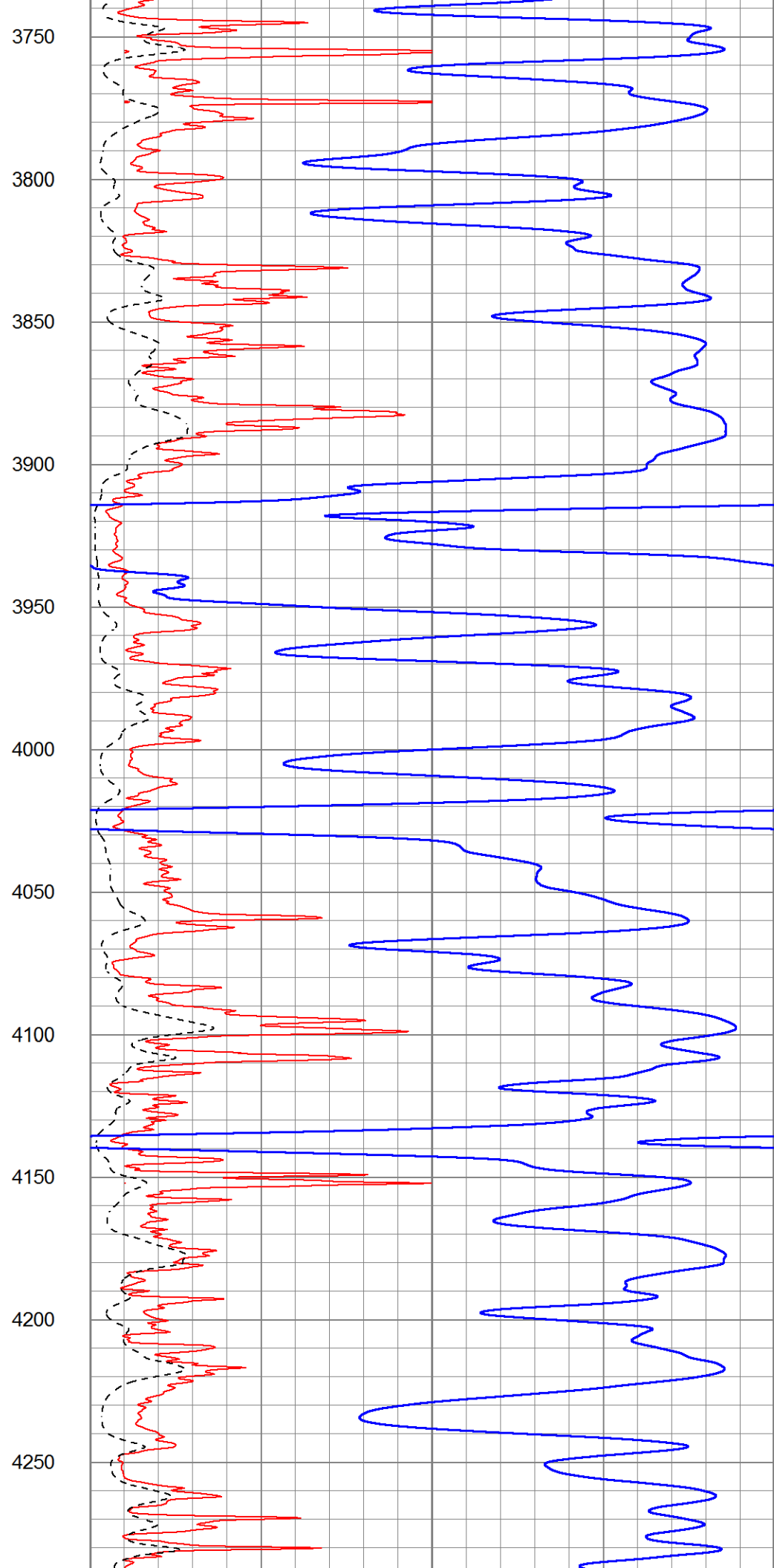
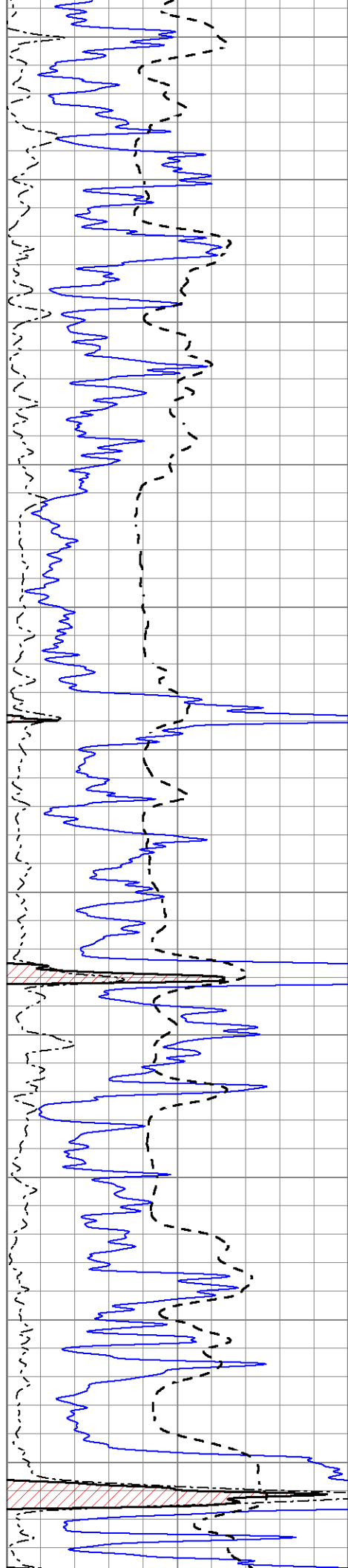


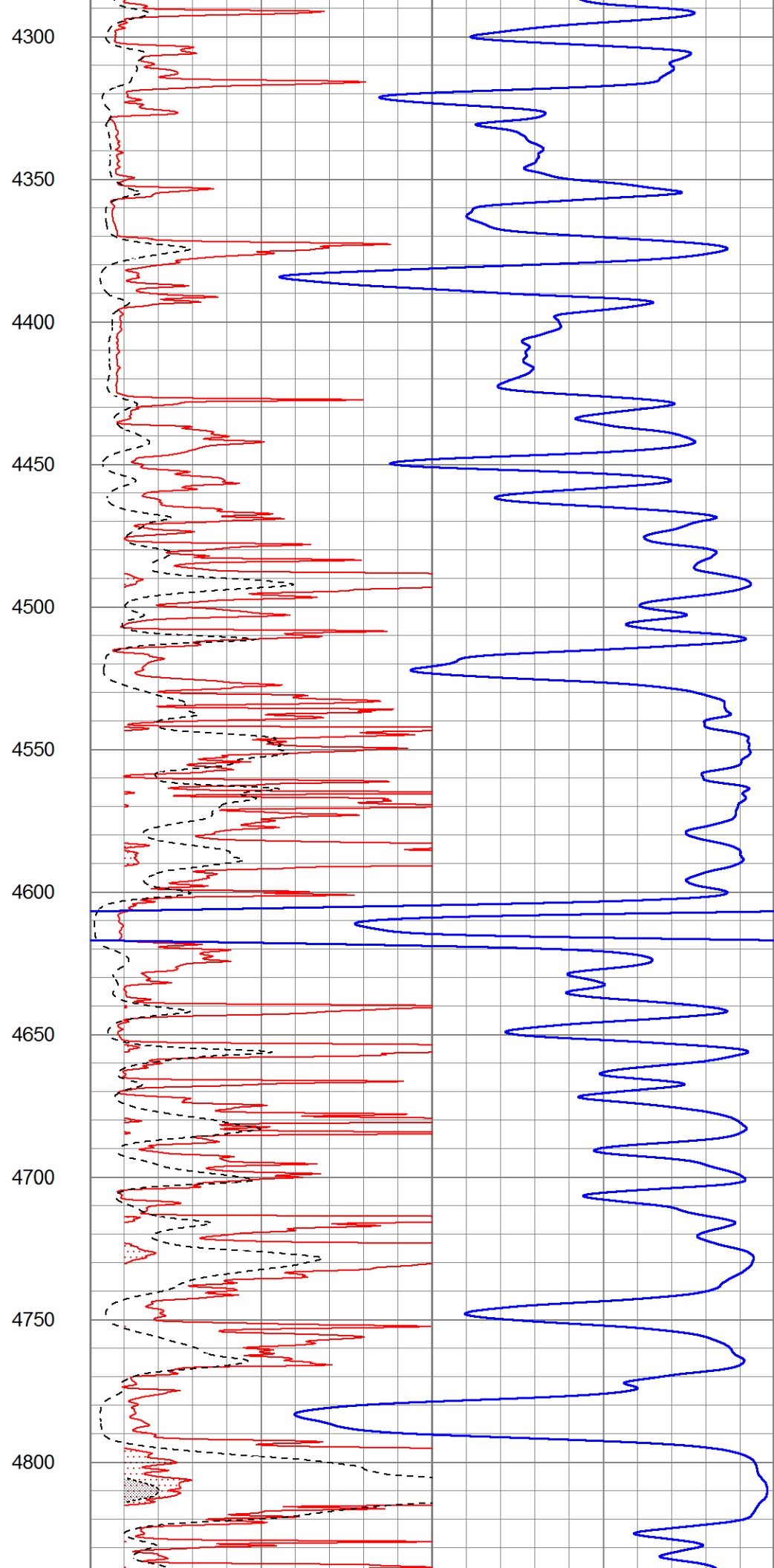
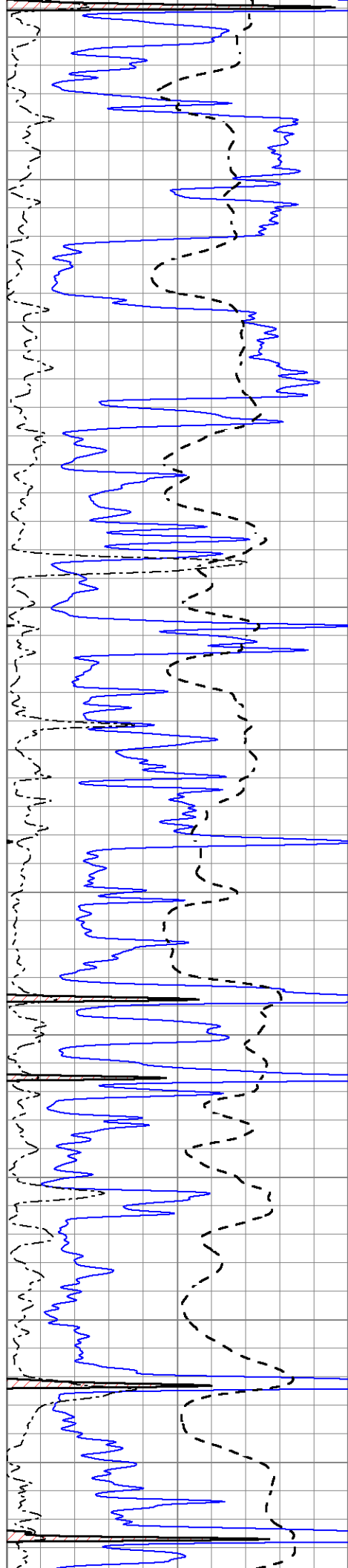


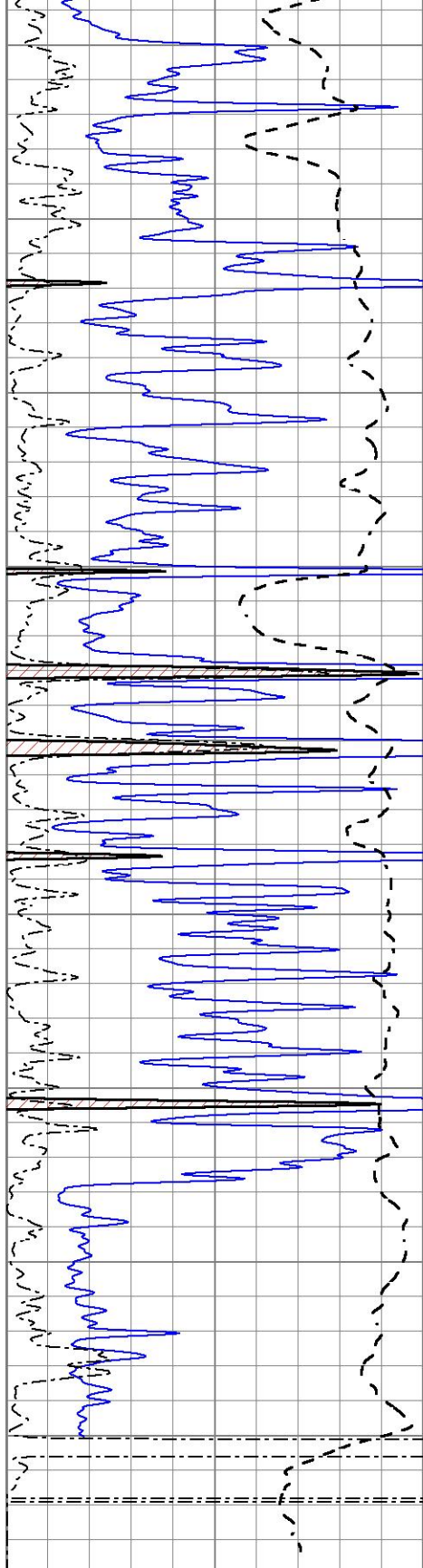




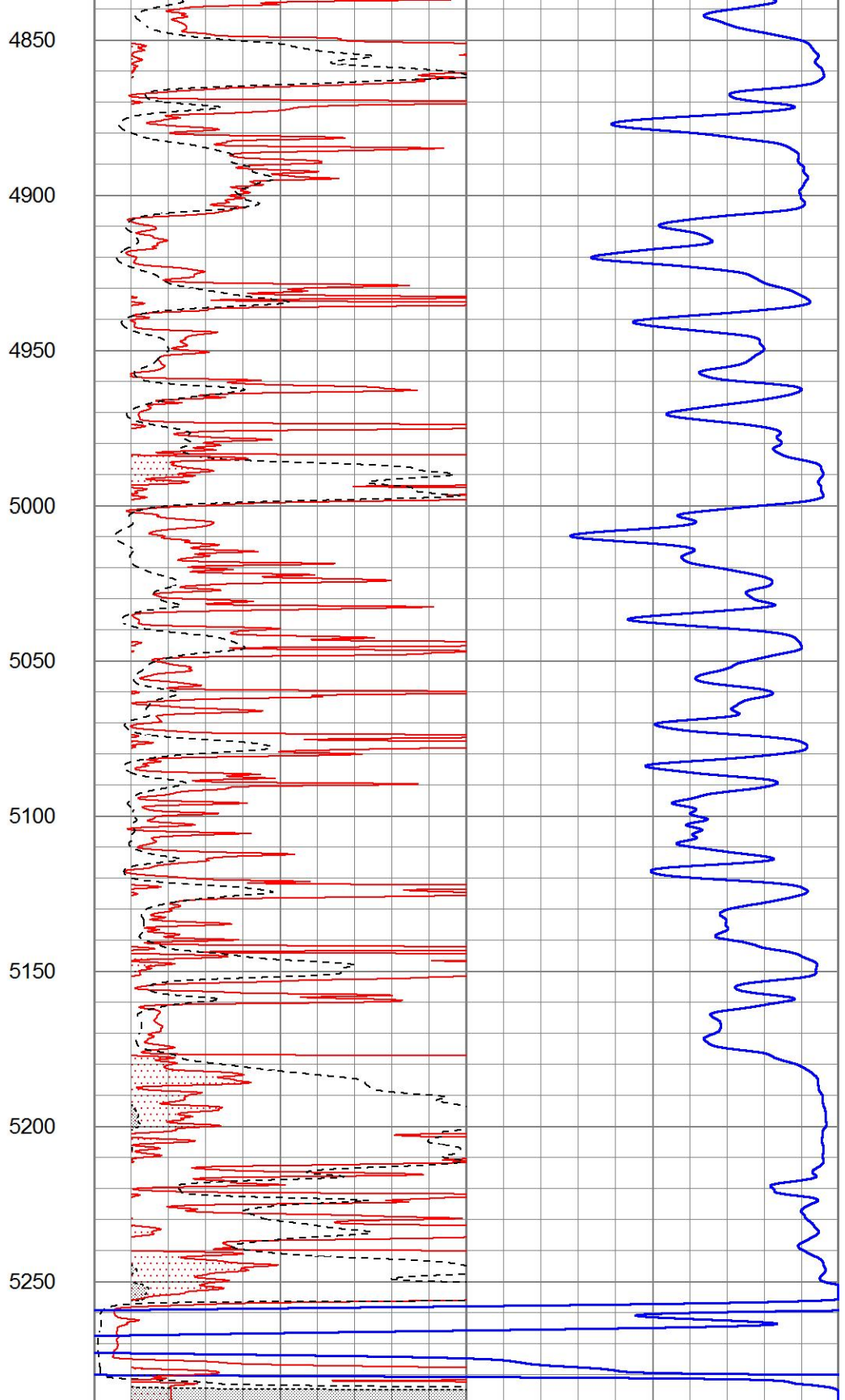








0	Gamma Ray (GAPI)	150
-100	SP (mV)	100
0	RWA (Ohm-m)	1



1000	CILD (mmho/m)	0
0	RLL3 (Ohm-m)	50
0	RILD (Ohm-m)	50
50	RILD X10 (Ohm-m)	500
50	RLL3 X10 (Ohm-m)	500



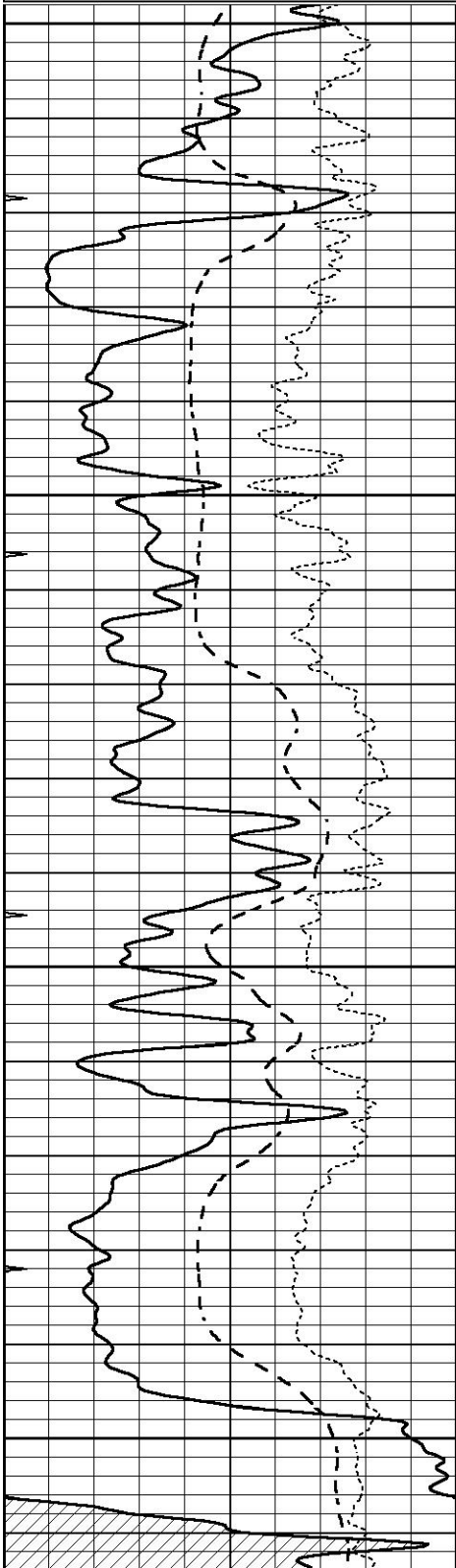


MAIN SECTION

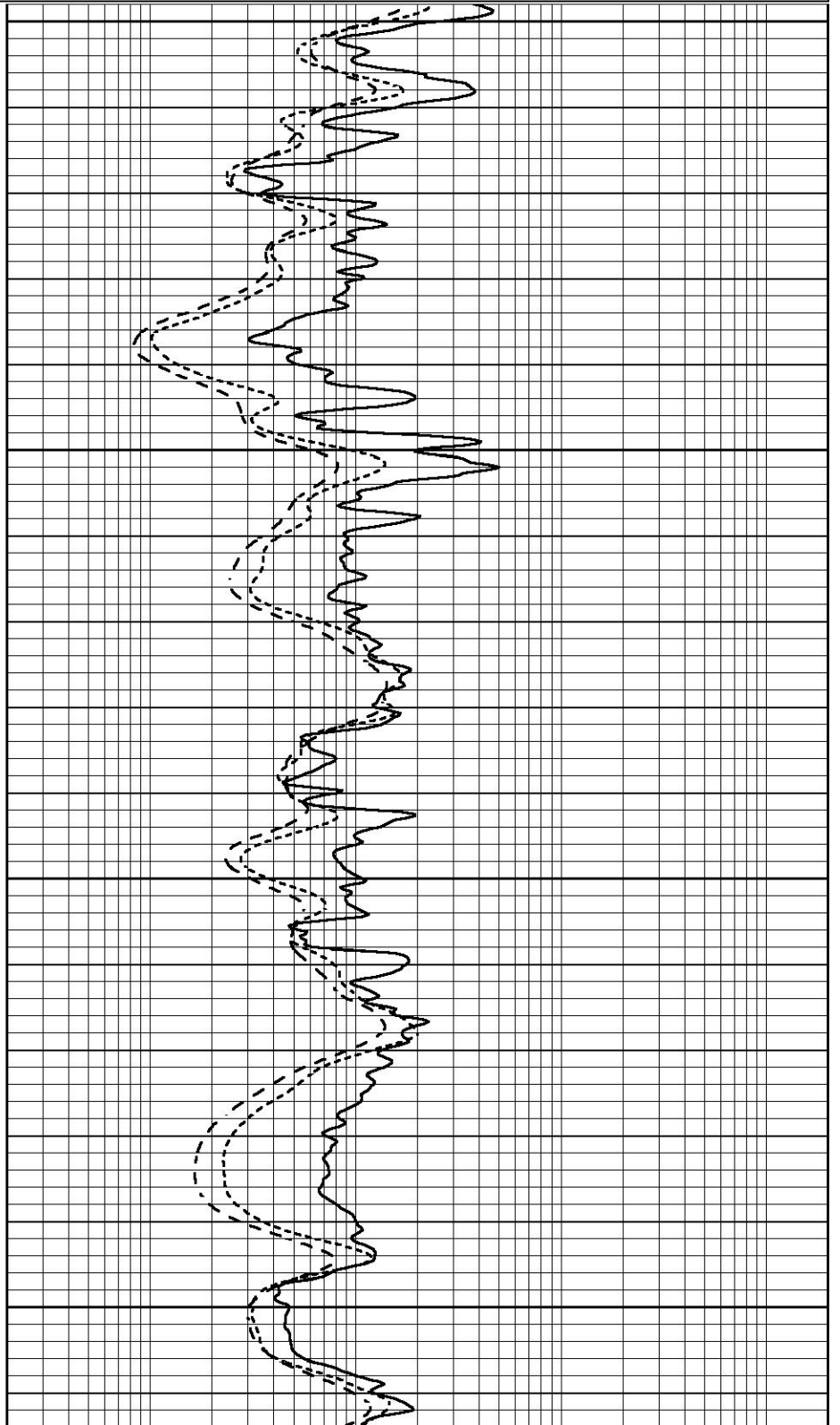
Database File 7313pe.db
Dataset Pathname pass3.1M
Presentation Format _dil
Dataset Creation Fri Aug 04 15:16:37 2023
Charted by Depth in Feet scaled 1:240

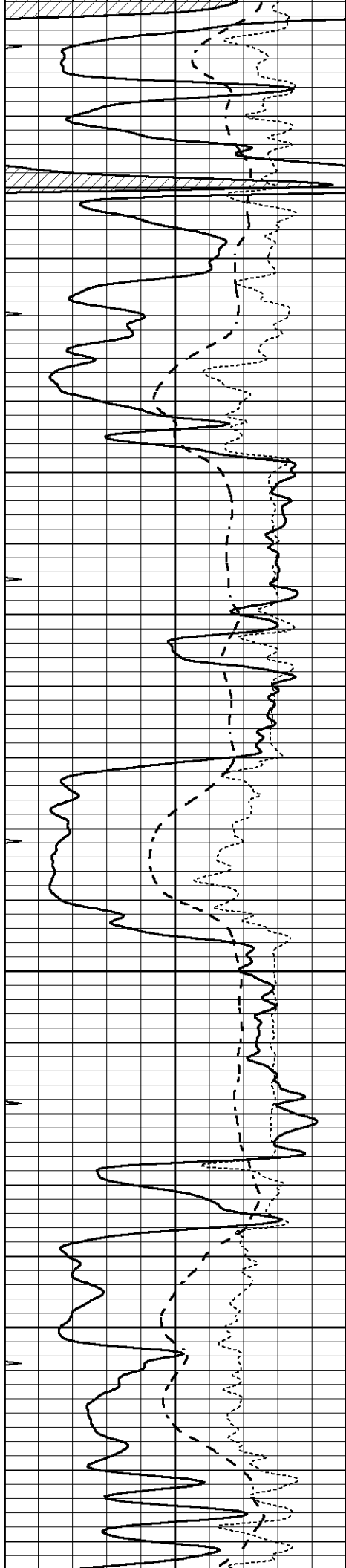
0	GAMMA RAY (GAPI)	150
-100	SP (mV)	100
-250	Rxo/Rt	50
0	MINMK	20

0.2	SHALLOW GUARD (Ohm-m)	2000
0.2	DEEP INDUCTION (Ohm-m)	2000
0.2	MEDIUM INDUCTION (Ohm-m)	2000



4100
4150
4200
4250



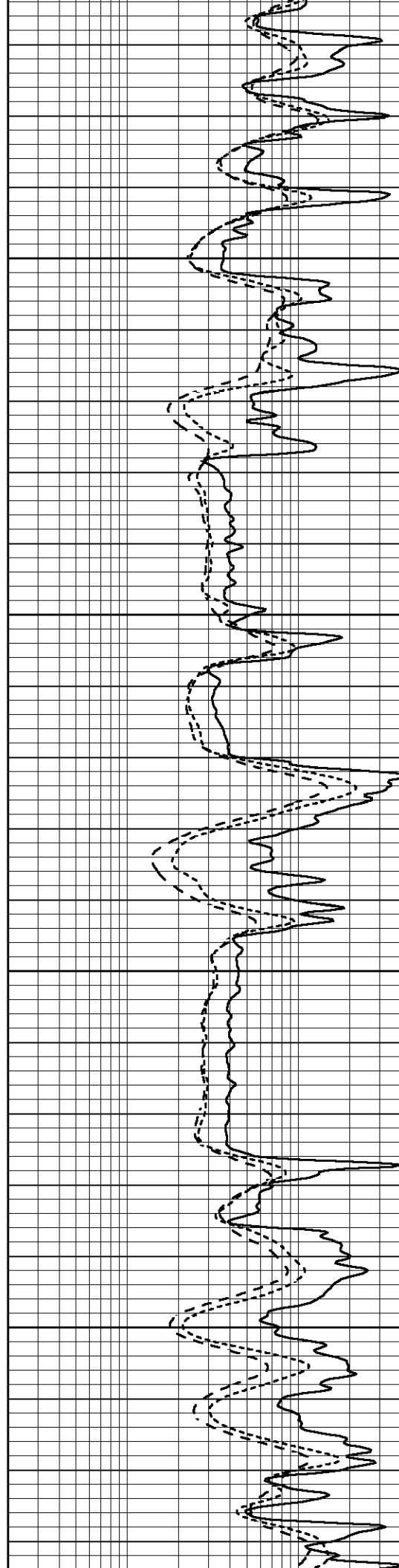


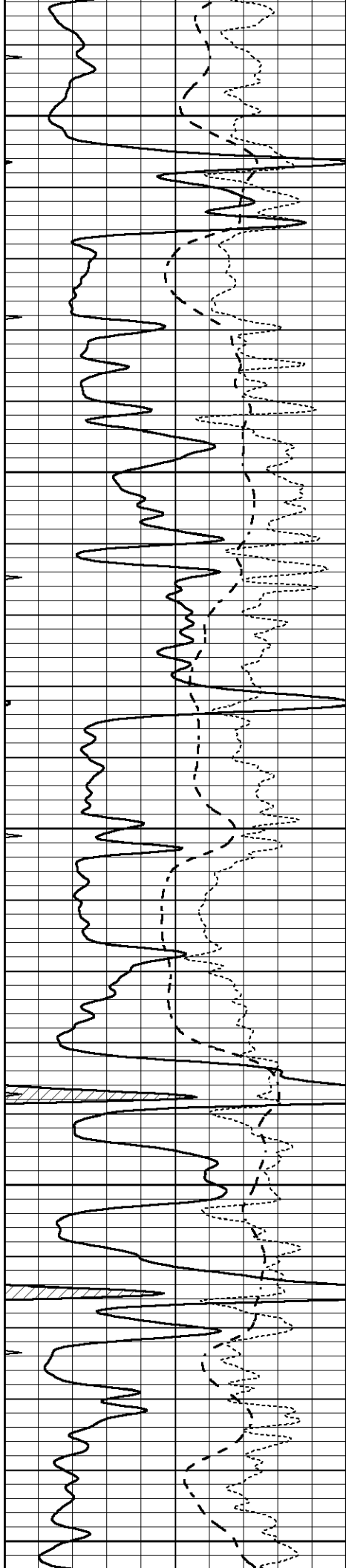
4300

4350

4400

4450





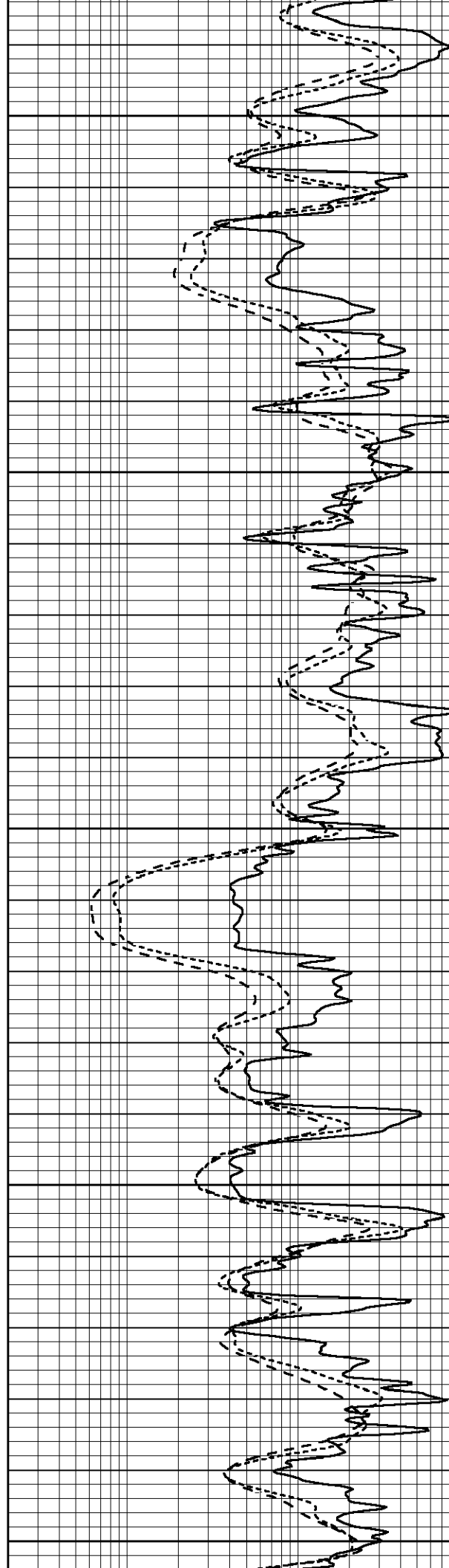
4500

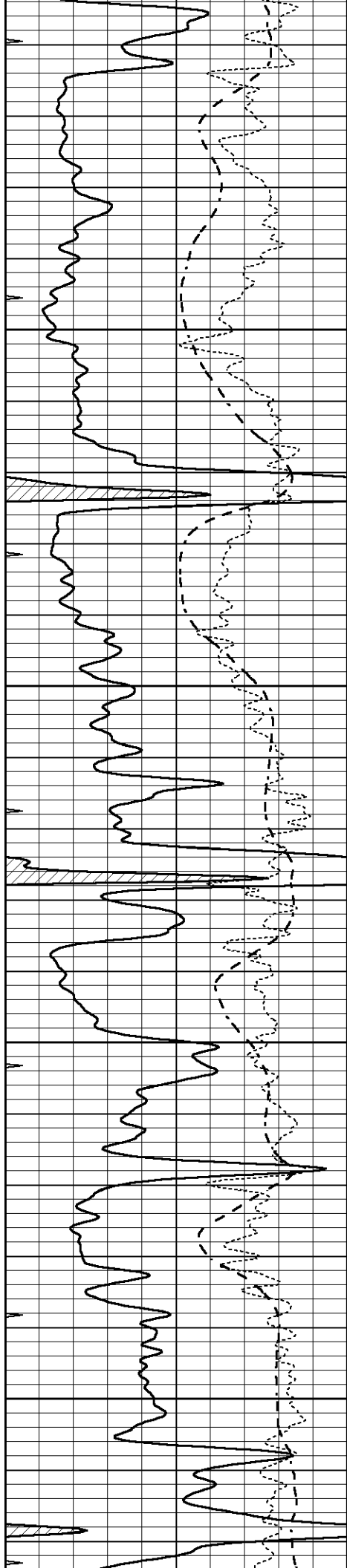
4550

4600

4650

4700



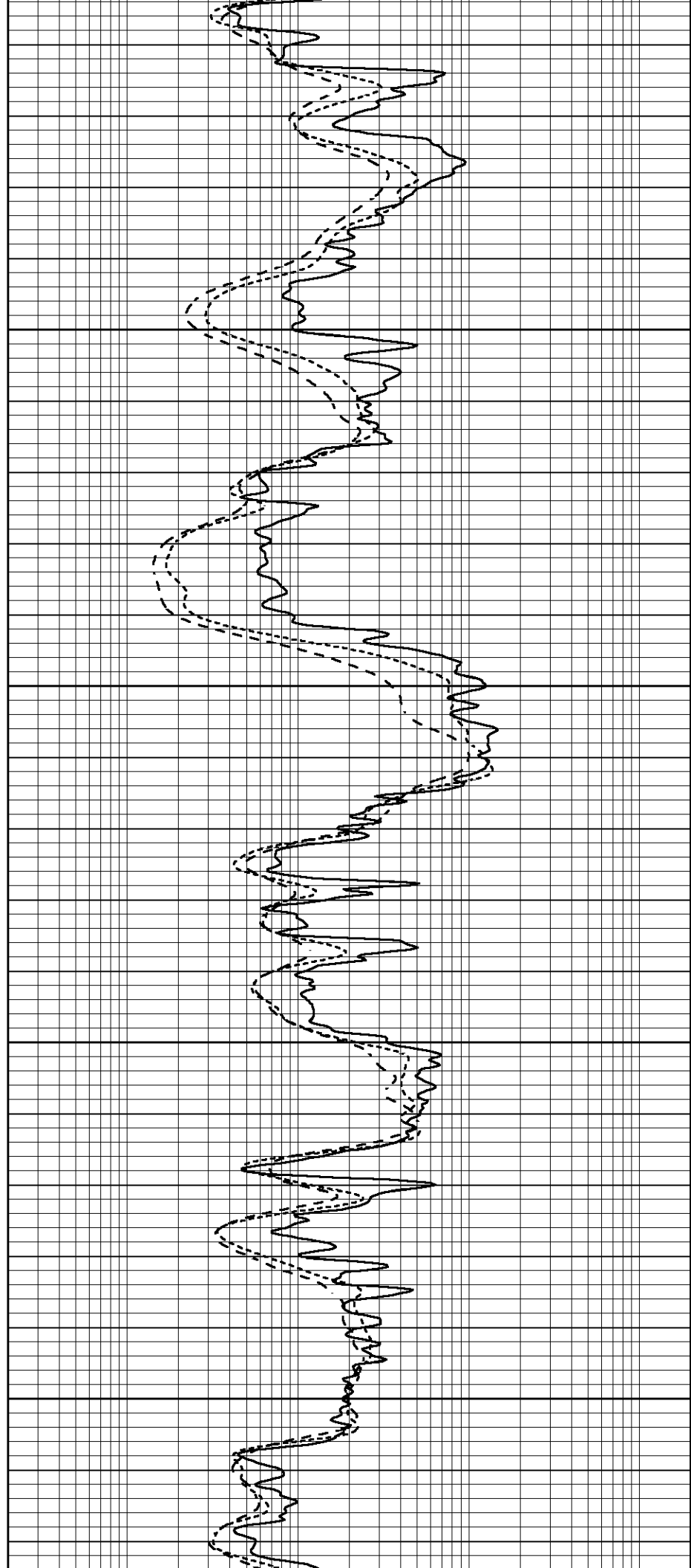


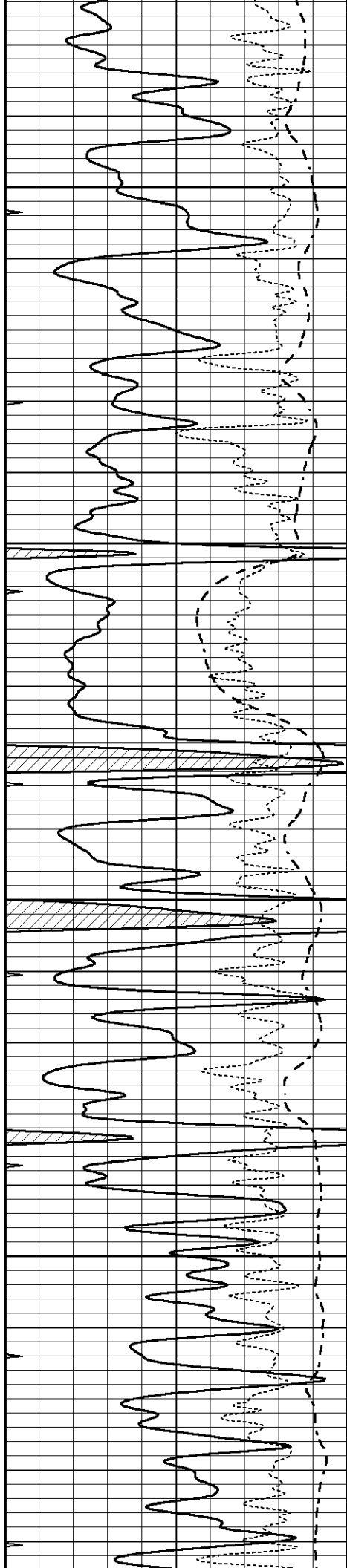
4750

4800

4850

4900



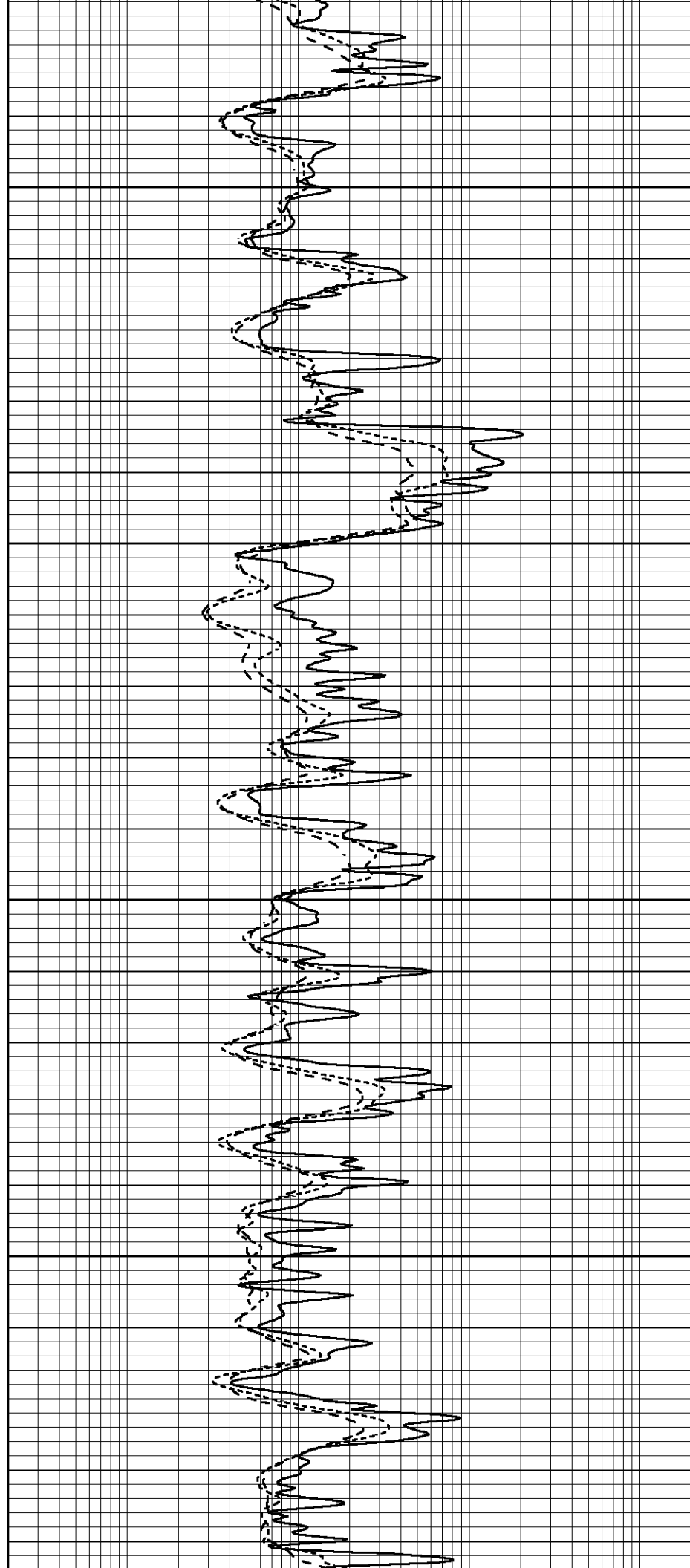


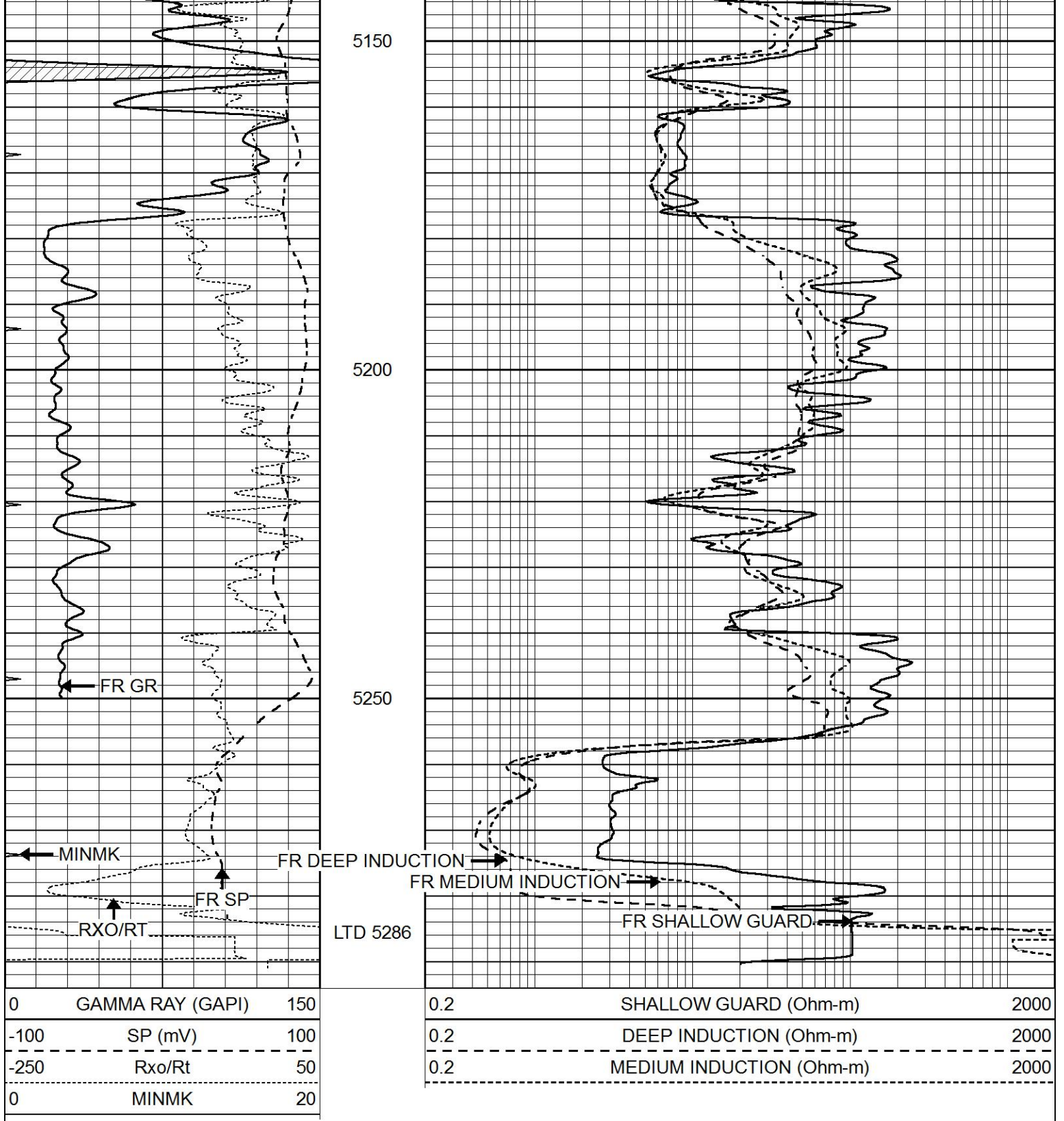
4950

5000

5050

5100





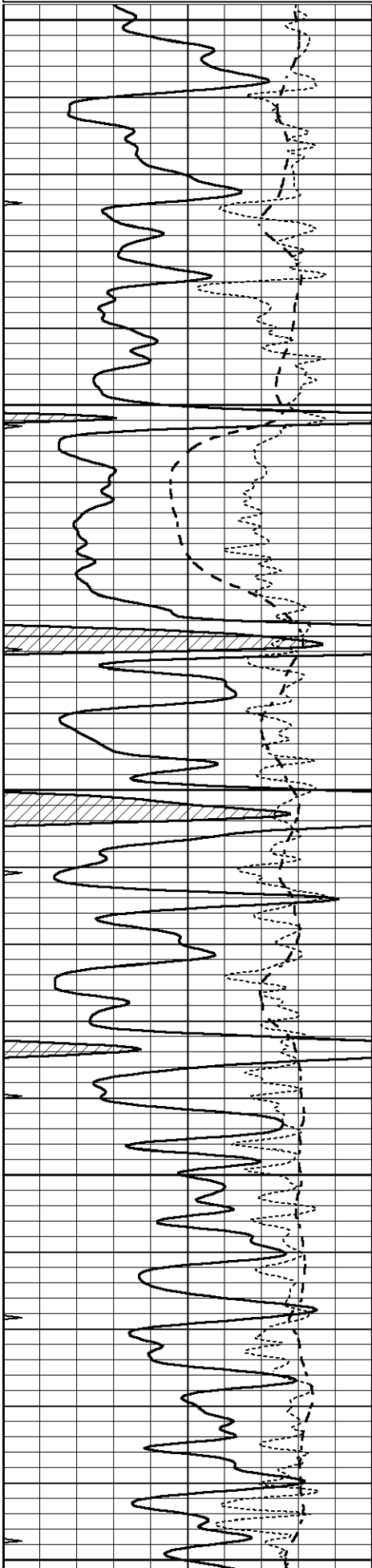
REPEAT SECTION

Database File 7313pe.db
 Dataset Pathname pass2.2R
 Presentation Format _dil
 Dataset Creation Fri Aug 04 14:42:44 2023
 Charted by Depth in Feet scaled 1:240

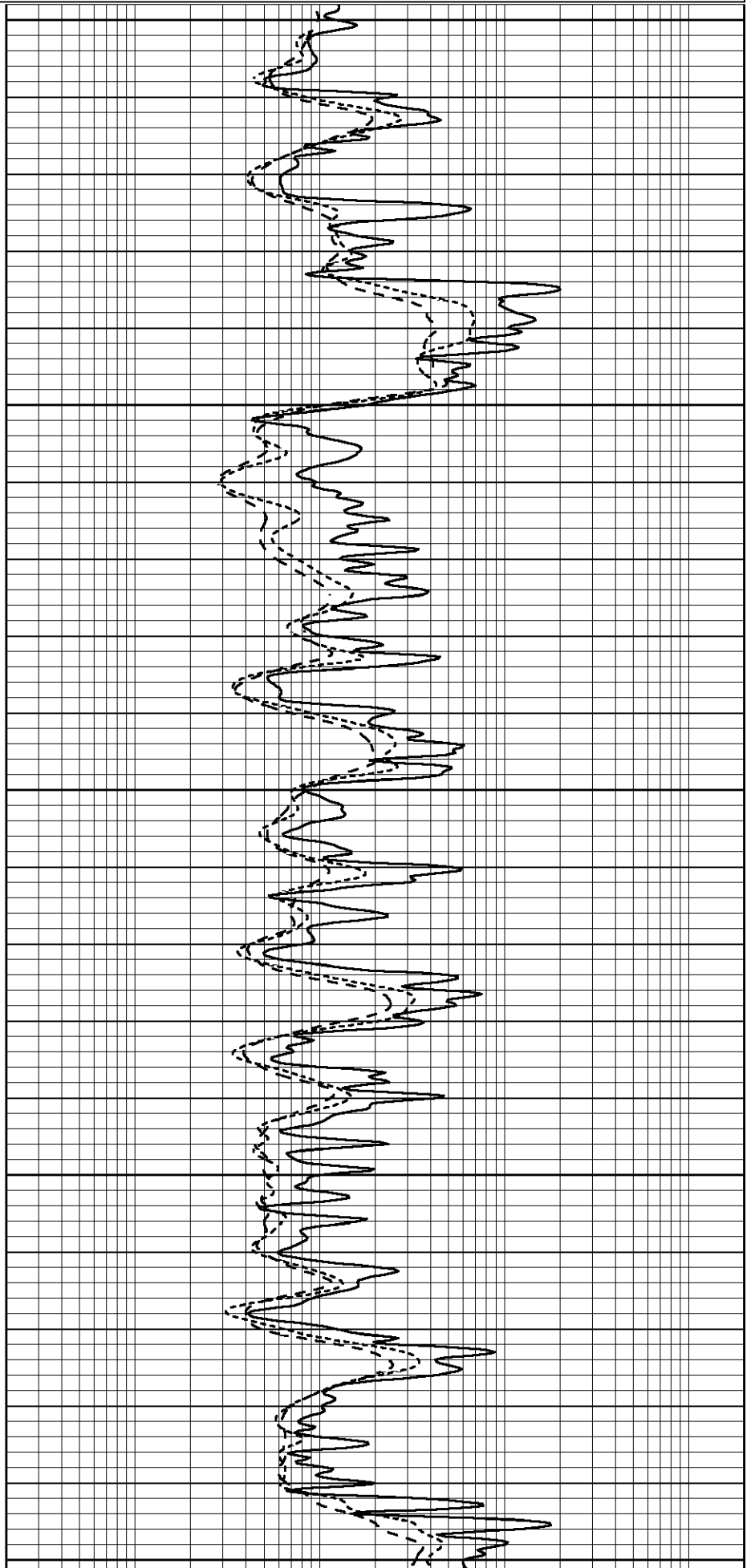


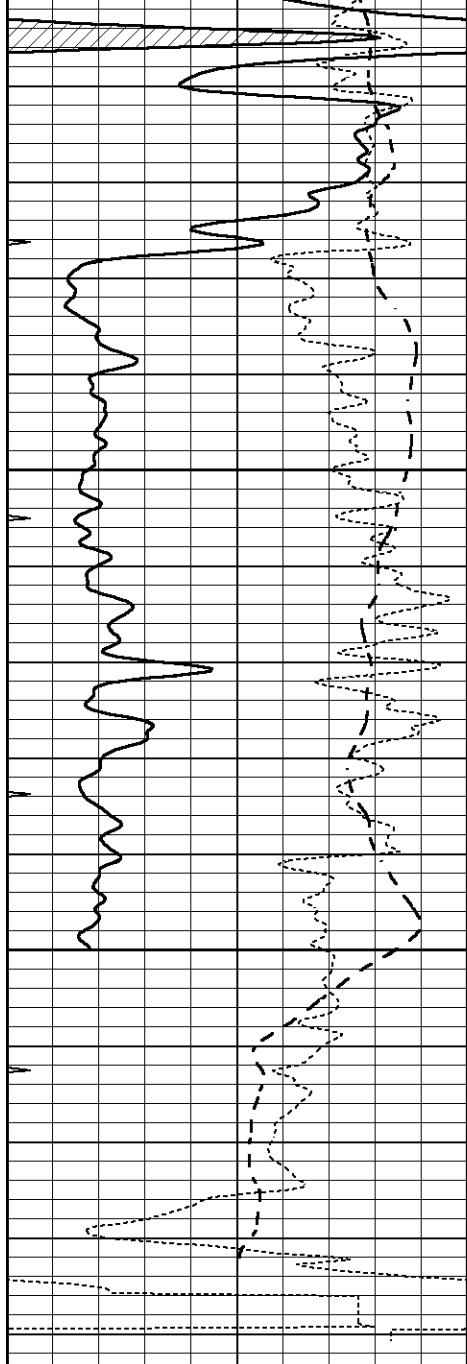
-100	SP (mV)	100
-250	Rxo/Rt	50
0	MINMK	20

0.2	DEEP INDUCTION (Ohm-m)	2000
0.2	MEDIUM INDUCTION (Ohm-m)	2000



4950
5000
5050
5100
5150

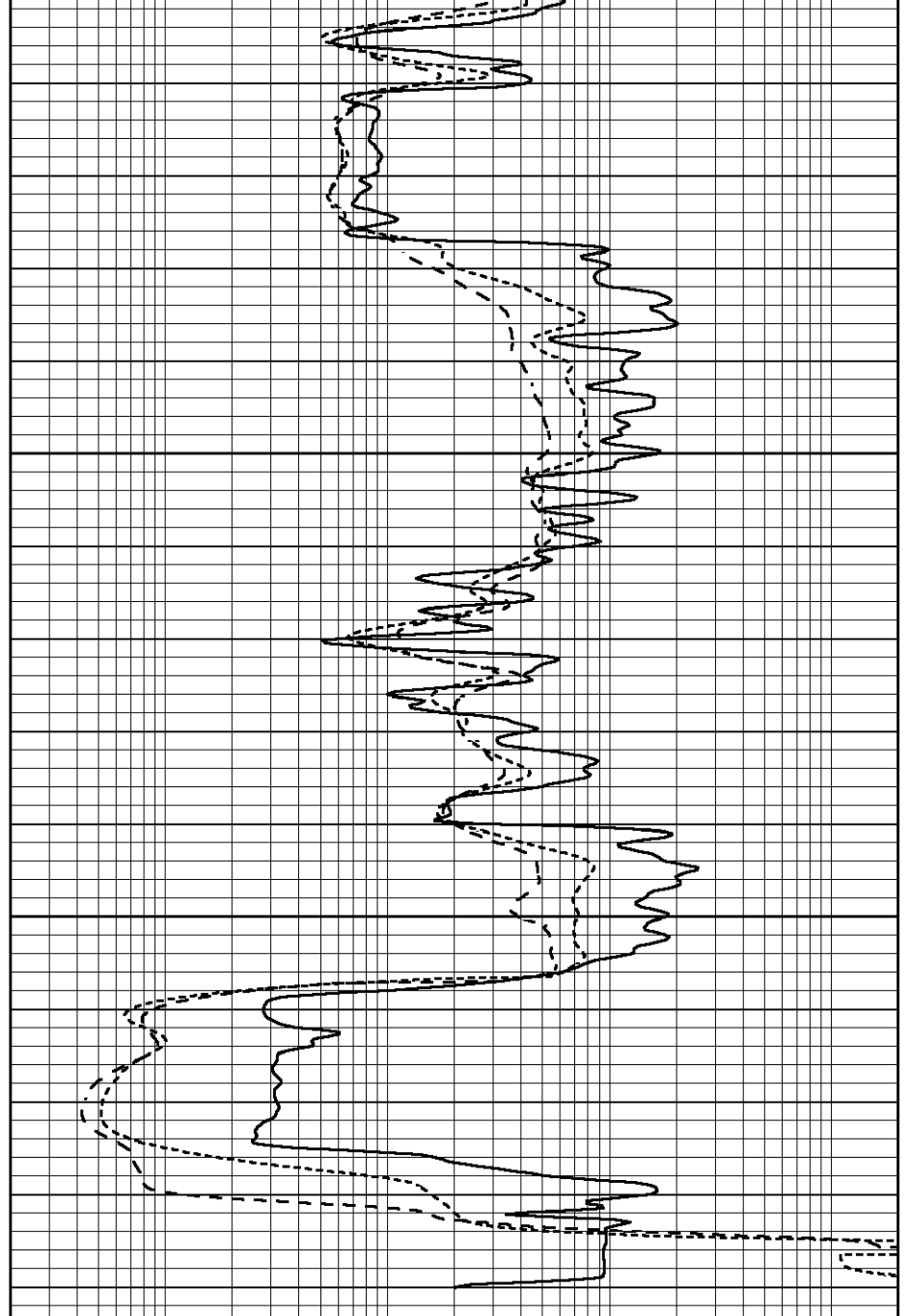




5200

5250

0	GAMMA RAY (GAPI)	150
-100	SP (mV)	100
-250	Rxo/Rt	50
0	MINMK	20



0.2	SHALLOW GUARD (Ohm-m)	2000
0.2	DEEP INDUCTION (Ohm-m)	2000
0.2	MEDIUM INDUCTION (Ohm-m)	2000

Calibration Report

Database File 7313pe.db
 Dataset Pathname pass3.1M
 Dataset Creation Fri Aug 04 15:16:37 2023

Dual Induction Calibration Report

Serial-Model: PROBE8-DILG
 Surface Cal Performed: Fri Aug 04 13:42:47 2023
 Downhole Cal Performed: Mon Jul 28 11:08:27 2008
 After Survey Verification Performed: Mon Jul 28 11:08:27 2008

Surface Calibration

Readings

References

Results

Loop: Air Loop Air Loop m h

Loop.	Air	Loop		Air	Loop		m	b
Deep	0.015	0.648	V	0.000	400.000	mmho/m	660.000	10.000
Medium	0.029	0.796	V	0.000	464.000	mmho/m	620.000	-2.000
Internal:	Zero	Cal		Zero	Cal		m	b
Deep	0.017	0.657	V	0.000	400.000	mmho/m	625.153	-10.619
Medium	0.016	0.757	V	0.000	464.000	mmho/m	625.992	-9.739

Downhole Calibration								
	Readings			References			Results	
	Zero	Cal		Zero	Cal		m'	b'
Deep	0.000	0.000	mmho/m	2.011	405.777	mmho/m	1.000	0.000
Medium	0.000	0.000	mmho/m	7.590	503.393	mmho/m	1.000	0.000
LL3		7.500	V		1500.000	Ohm-m		
		0.000	V		20.000	Ohm-m		
		-7.200	V		3800.000	mmho-m		

After Survey Verification								
	Readings			Targets			Results	
	Zero	Cal		Zero	Cal		m'	b'
Deep	0.000	0.000	mmho/m	0.000	0.000	mmho/m	0.000	0.000
Medium	0.000	0.000	mmho/m	0.000	0.000	mmho/m	0.000	0.000
LL3		1.000	Ohm-m		1.000	Ohm-m		
		0.000	Ohm-m		0.000	Ohm-m		
		1.000	mmho-m		1.000	mmho-m		

Litho Density Calibration Report
Serial: 004 Model: PRB

Master Calibration		Performed Tue Aug 02 11:29:35 2022						
	Background	Magnesium	Aluminum	Aluminum+Fe				
Window 1	1154.2	10019.5	3137.9	2795.6			cps	
Window 2	1054.4	8597.6	2733.4	2469.5			cps	
Window 3	902.3	5241.4	1832.1	1719.3			cps	
Window 4	251.9	261.1	255.8	252.9			cps	
Long Space	0.0	7543.2	1679.0	1415.0			cps	
Short Space	4.4	2049.3	1321.7	1116.8			cps	
Rho		1.7100	2.5900	0.0000			g/cc	
Pe		2.0000	2.7500	5.7900				
Rib Angle	: 43.7	Rib Slope	: 0.957	Density/Spine Ratio			: 0.562	
Spine Angle	: 73.7	Spine Slope	: 3.426	Spine Intercept			: -17.2	

Before Survey Verification		Performed Wed Dec 31 18:00:00 1969						
Window 1	0.0	0.0	0.0	0.0			cps	
Window 2	0.0	0.0	0.0	0.0			cps	
Window 3	0.0	0.0	0.0	0.0			cps	
Window 4	0.0	0.0	0.0	0.0			cps	
Long Space	0.0	0.0	0.0	0.0			cps	
Short Space	0.0	0.0	0.0	0.0			cps	
Measured Rho		0.0000	0.0000	0.0000			g/cc	
Measured Correction		0.0000	0.0000	0.0000			g/cc	
Measured Pe			0.0000	0.0000				

After Survey Verification Performed Wed Dec 31 18:00:00 1969

Window 1	0.0	0.0	0.0	0.0	cps
Window 2	0.0	0.0	0.0	0.0	cps
Window 3	0.0	0.0	0.0	0.0	cps
Window 4	0.0	0.0	0.0	0.0	cps
Long Space	0.0	0.0	0.0	0.0	cps
Short Space	0.0	0.0	0.0	0.0	cps
Measured Rho		0.0000	0.0000	0.0000	g/cc
Measured Correction		0.0000	0.0000	0.0000	g/cc
Measured Pe			0.0000	0.0000	

Compensated Neutron Calibration Report

Serial Number: 070808PMC
Tool Model: NABORS

PRE-SURVEY VERIFICATION

Detector	Readings	Measured	Target
Short Space	cps		
Long Space	cps	pu	pu

POST-SURVEY VERIFICATION

Detector	Readings	Measured	Target
Short Space	cps		
Long Space	cps	pu	pu

Gamma Ray Calibration Report

Serial Number: 070558
Tool Model: OPEN_GR
Performed: Tue Aug 01 12:36:48 2023

Calibrator Value: 1.0 GAPI

Background Reading: 0.0 cps
Calibrator Reading: 1.0 cps

Sensitivity: 0.3000 GAPI/cps