

SONIC
LOG



Company VINCENT OIL CORPORATION
Well C & D HERRMANN #1-6
Field UNNAMED
County FORD State KANSAS

Location: API #: 15-057-21092-0000
1777' FSL & 754' FEL
NE - SW - NE - SE
SEC 6 TWP 29S RGE 23W
Permanent Datum GROUND LEVEL Elevation 2482
Log Measured From KELLY BUSHING 12' A.G.L.
Drilling Measured From KELLY BUSHING
Other Services
CDL/CNL/PE
DIL/MEL
Elevation
K.B. 2494
D.F. 2492
G.L. 2482

Company	VINCENT OIL CORPORATION
Well	C & D HERRMANN #1-6
Field	UNNAMED
County	FORD
State	KANSAS
Date	8/4/23
Run Number	TWO
Depth Driller	5285
Depth Logger	5286
Bottom Logged Interval	5278
Top Log Interval	600
Casing Driller	8 5/8"@608'
Casing Logger	606
Bit Size	7 7/8"
Type Fluid in Hole	CHEMICAL MUD
Density / Viscosity	9.2/51
pH / Fluid Loss	11.0/9.2
Source of Sample	FLOWLINE
Rm @ Meas. Temp	.400@85F
Rmf @ Meas. Temp	.300@85F
Rmc @ Meas. Temp	.480@85F
Source of Rmf / Rmc	MEASUREMENT
Rm @ BHT	.266@128F
Time Circulation Stopped	5 HOURS
Time Logger on Bottom	4:00 P.M.
Maximum Recorded Temperature	128F
Equipment Number	922339
Location	HAYS, KANSAS
Recorded By	JEFF LUEBBERS
Witnessed By	BRAD RINE

<<< Fold Here >>>

All interpretations are opinions based on inferences from electrical or other measurements and we cannot and do not guarantee the accuracy or correctness of any interpretation, and we shall not, except in the case of gross or willful negligence on our part, be liable or responsible for any loss, costs, damages, or expenses incurred or sustained by anyone resulting from any interpretation made by any of our officers, agents or employees. These interpretations are also subject to our general terms and conditions set out in our current Price Schedule.

15-057-21092-0000 Comments

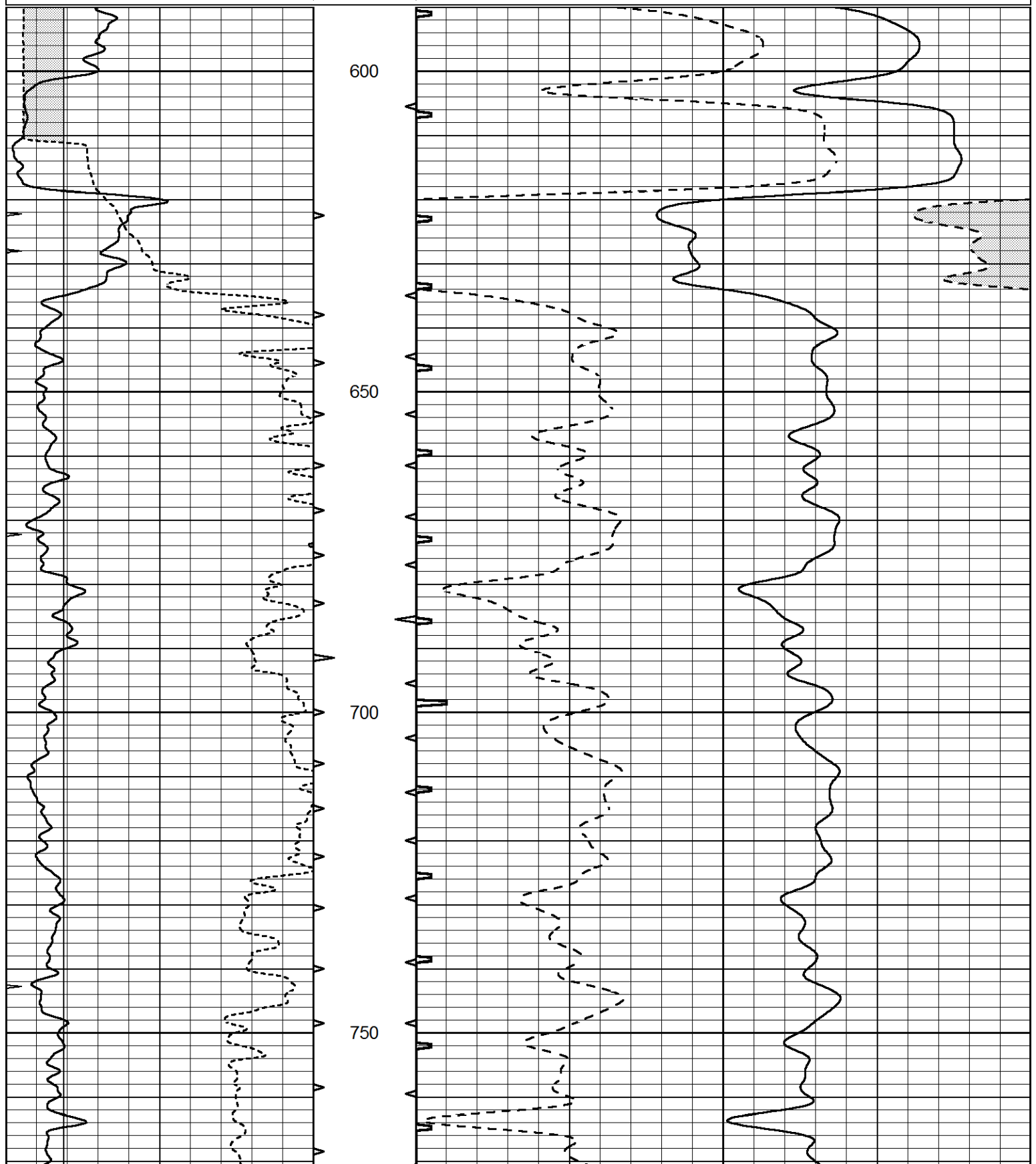
THANK YOU FOR USING ELI WIRELINE HAYS, KANSAS (785) 628-6395
DIRECTIONS
KINGSDOWN, KS., 1N. ON "RD. 125" TO "WILDFIRE RD., 6 1/2W., S. INTO @ FARM DRIVE

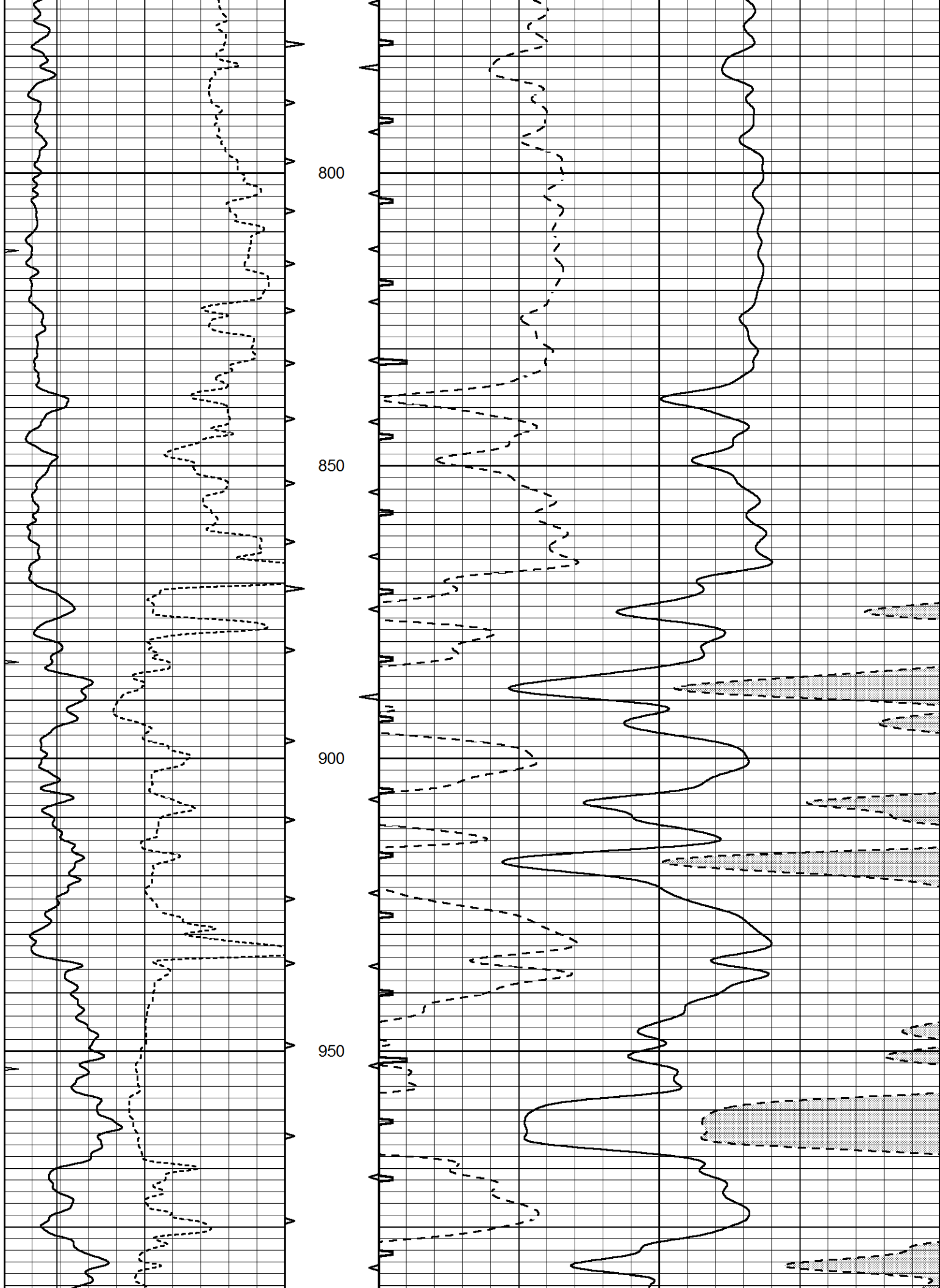


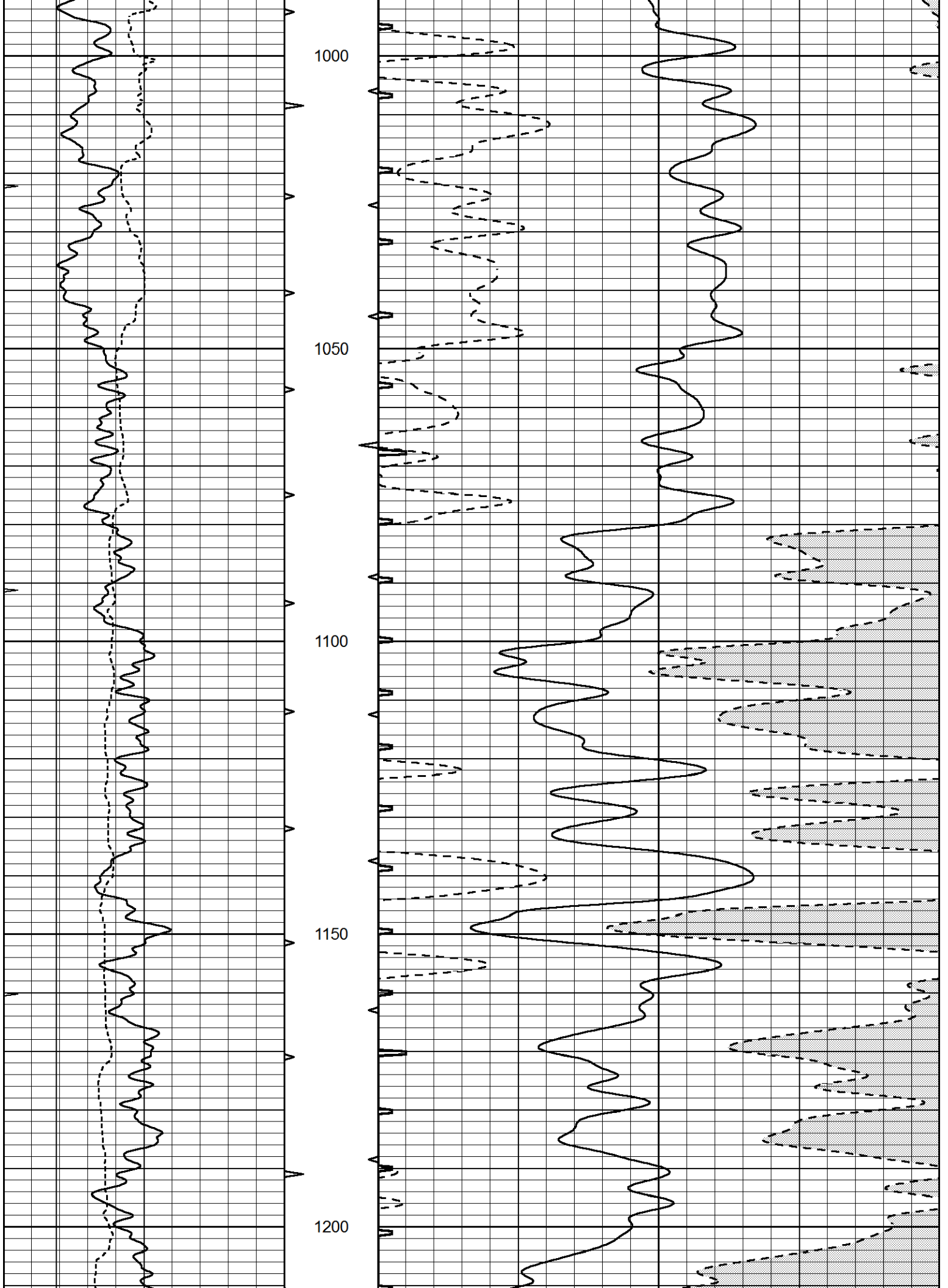
MAIN SECTION

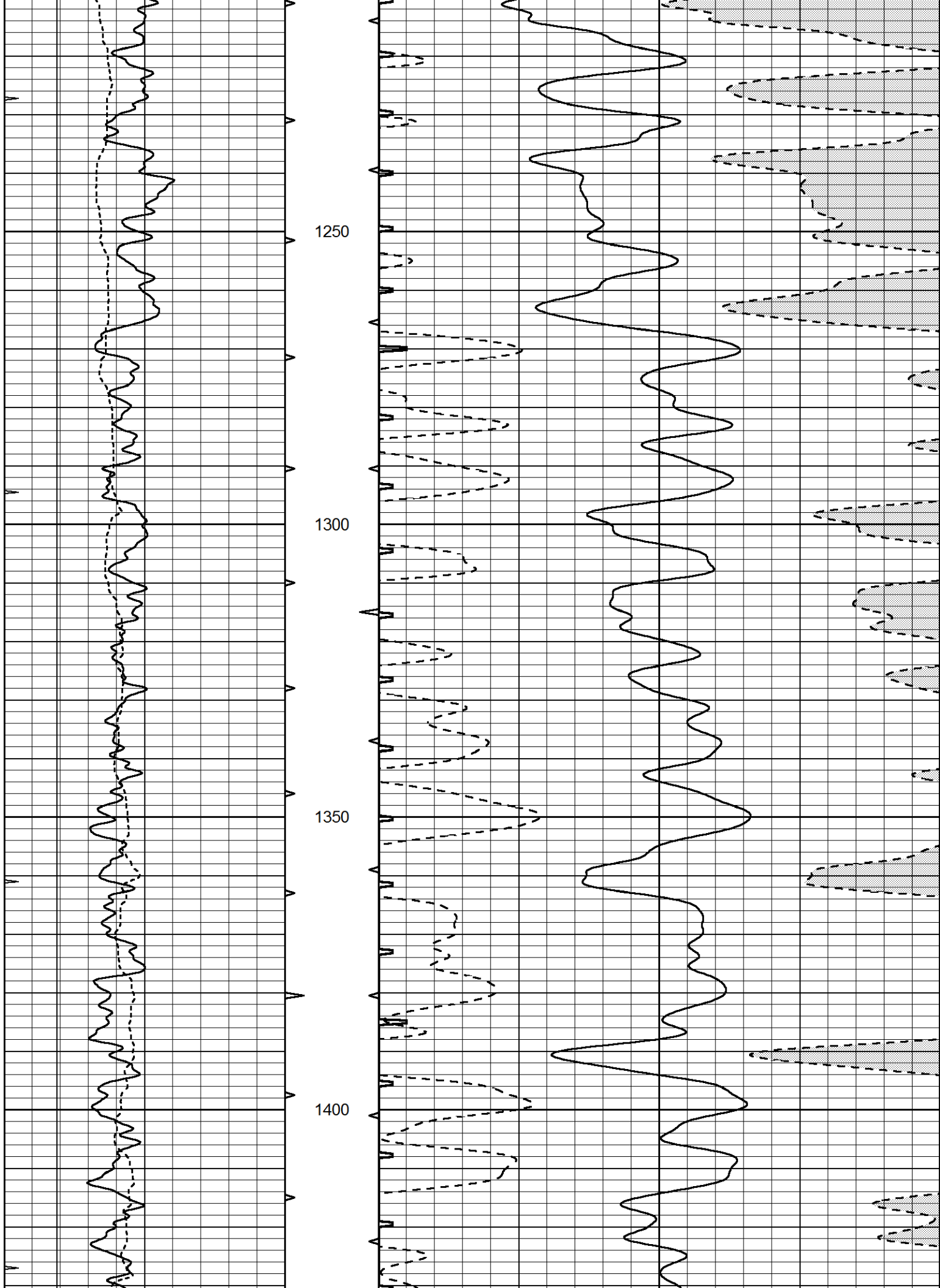
Database File 7313pe.db
 Dataset Pathname pass6.3
 Presentation Format slt
 Dataset Creation Fri Aug 04 17:34:10 2023
 Charted by Depth in Feet scaled 1:240

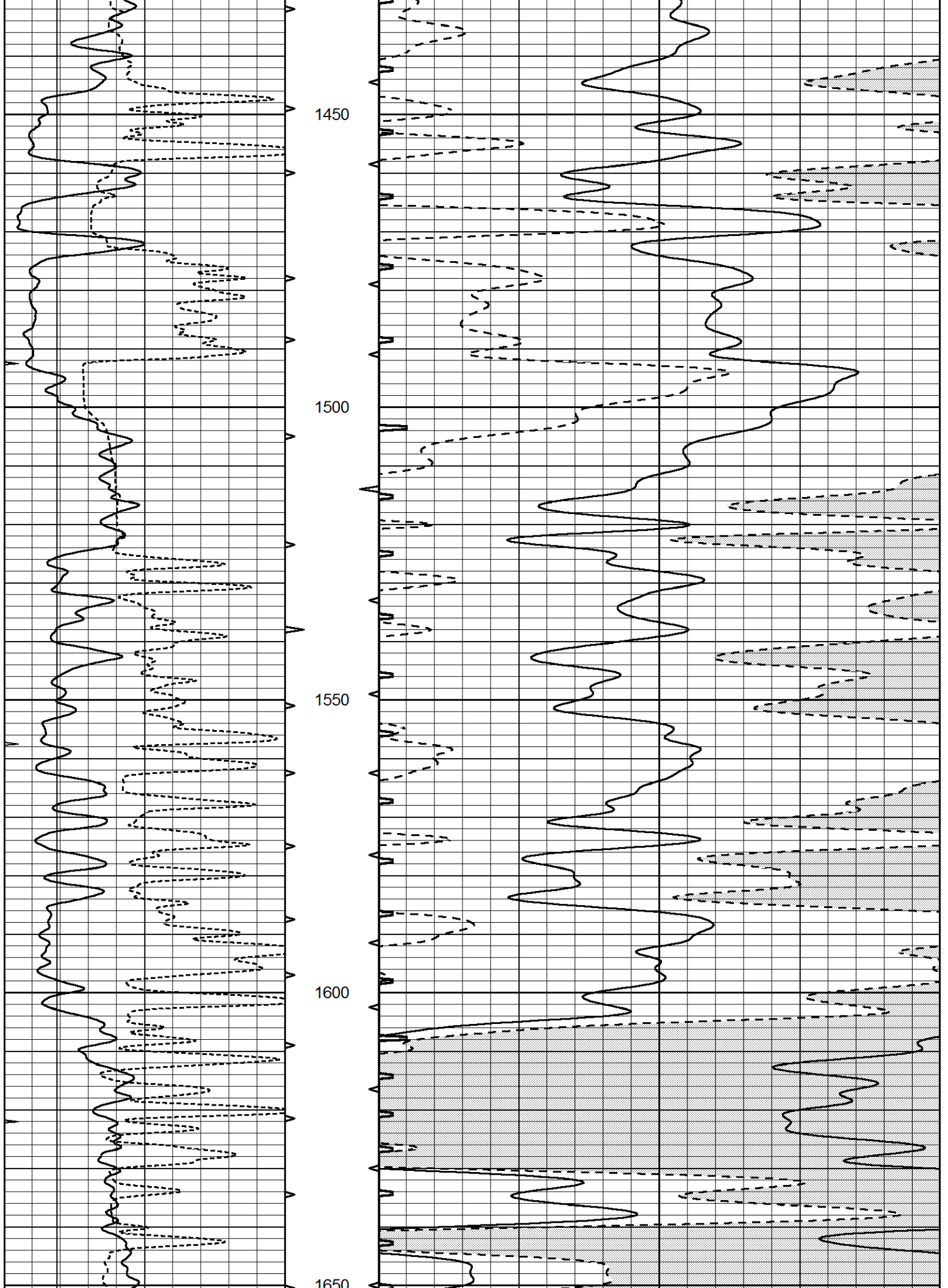
0	GAMMA RAY (GAPI)	150	ABHV	140	DELTA TIME (usec/ft)	40
6	CALIPER (in)	16	10 (ft3)	0	SONIC POROSITY (pu)	-10
0	MINMK	20	TBHV	0	ITT (msec)	20
			0 (ft3)	10		

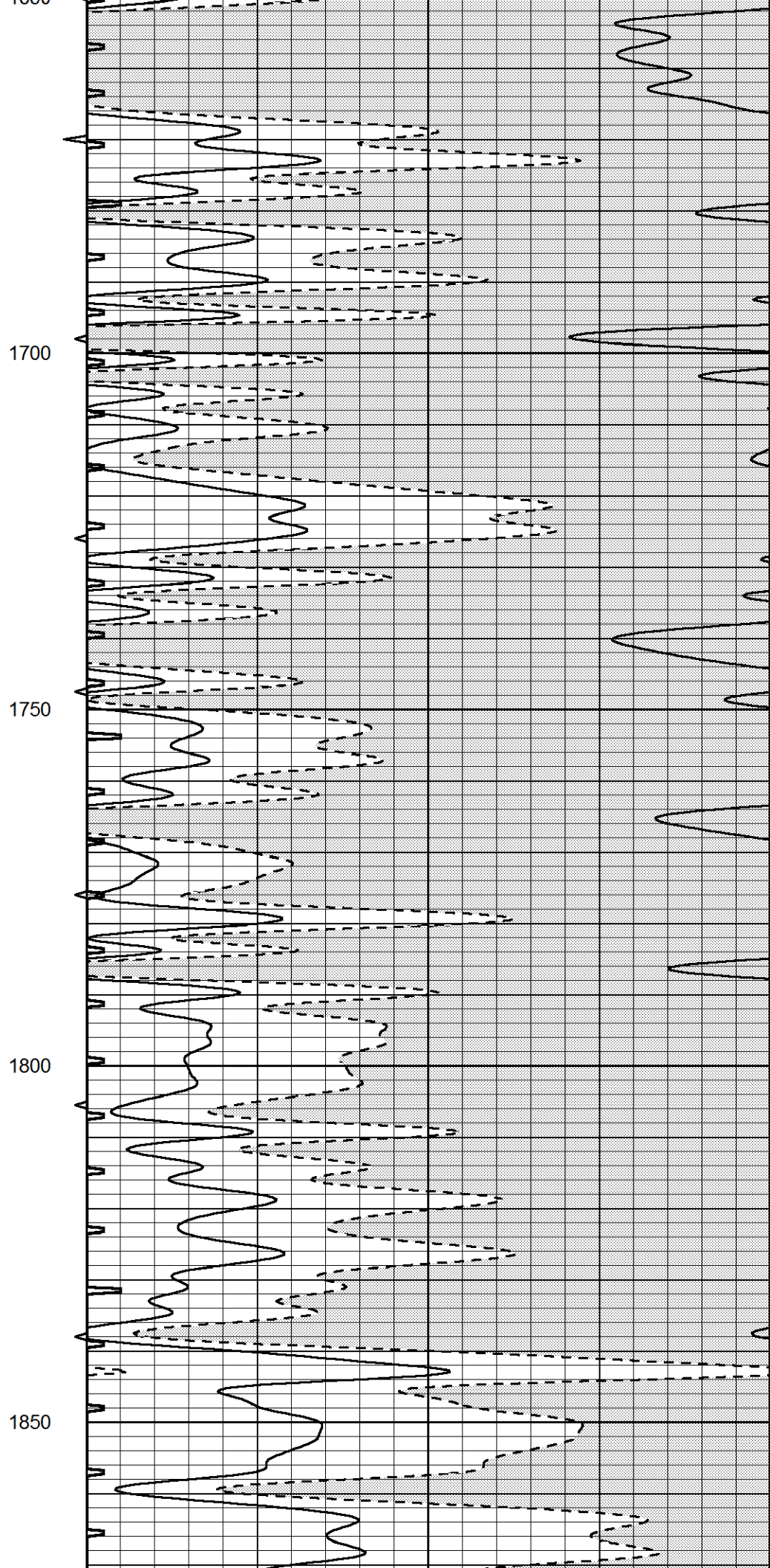
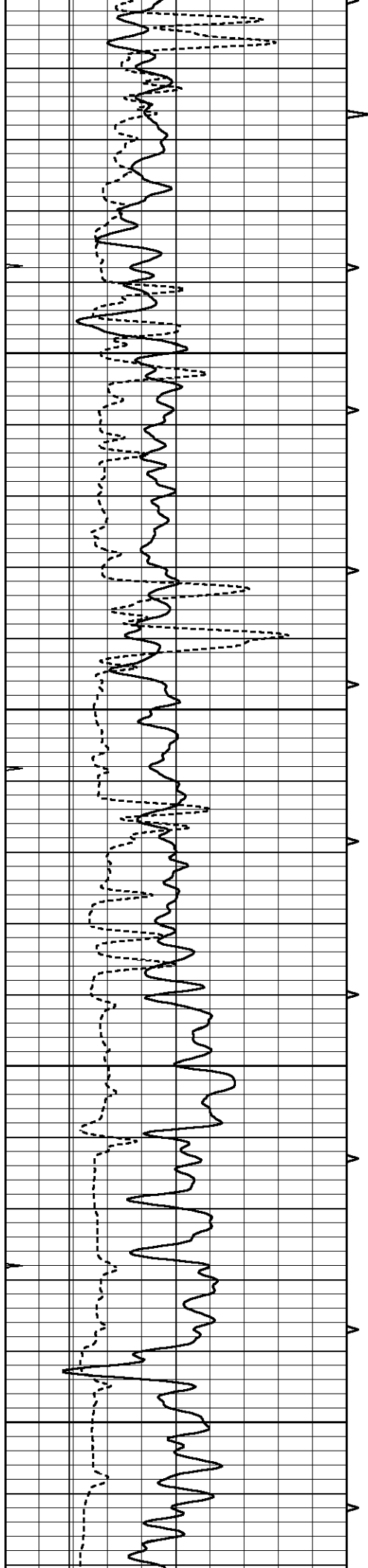


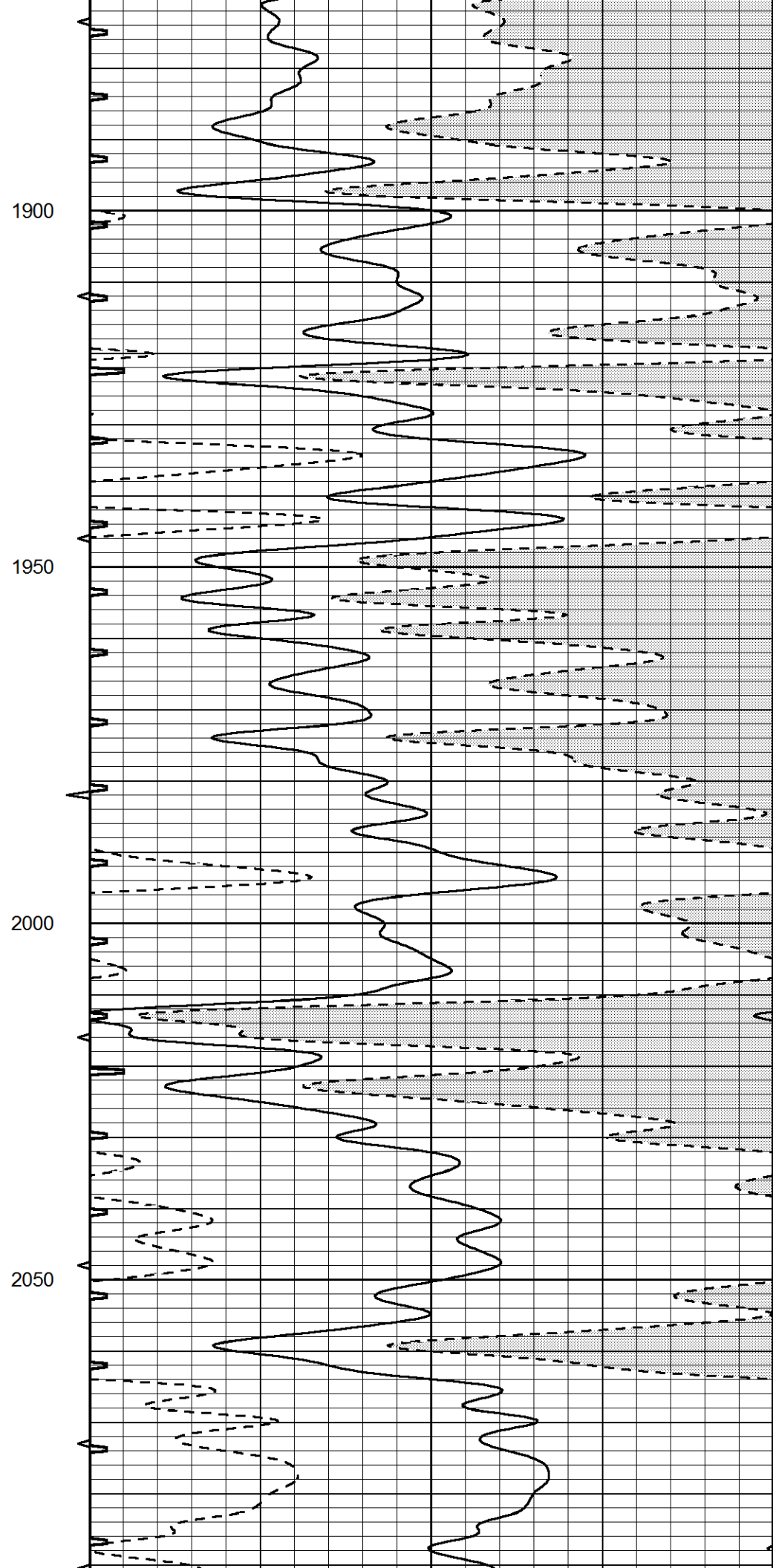
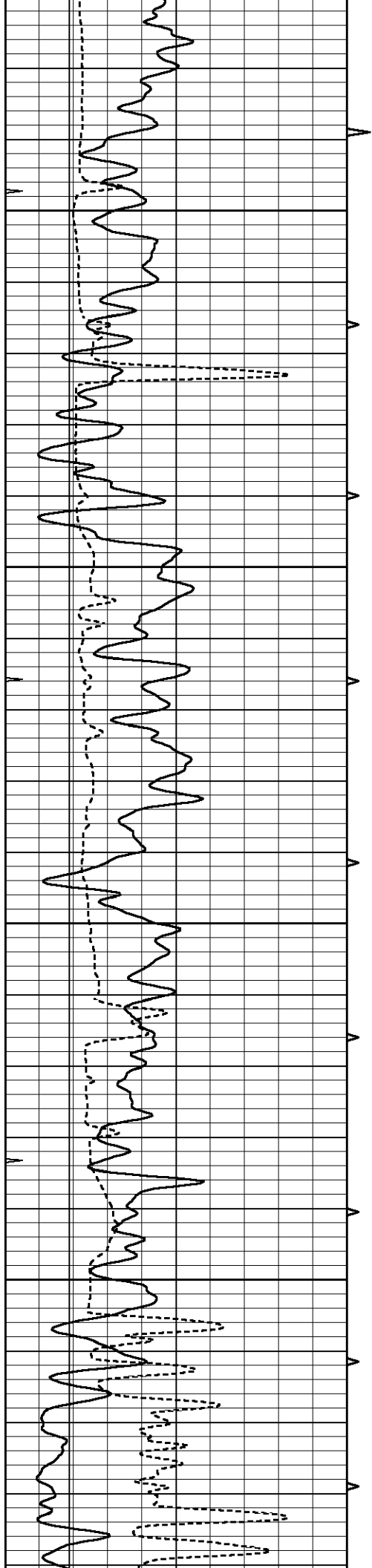


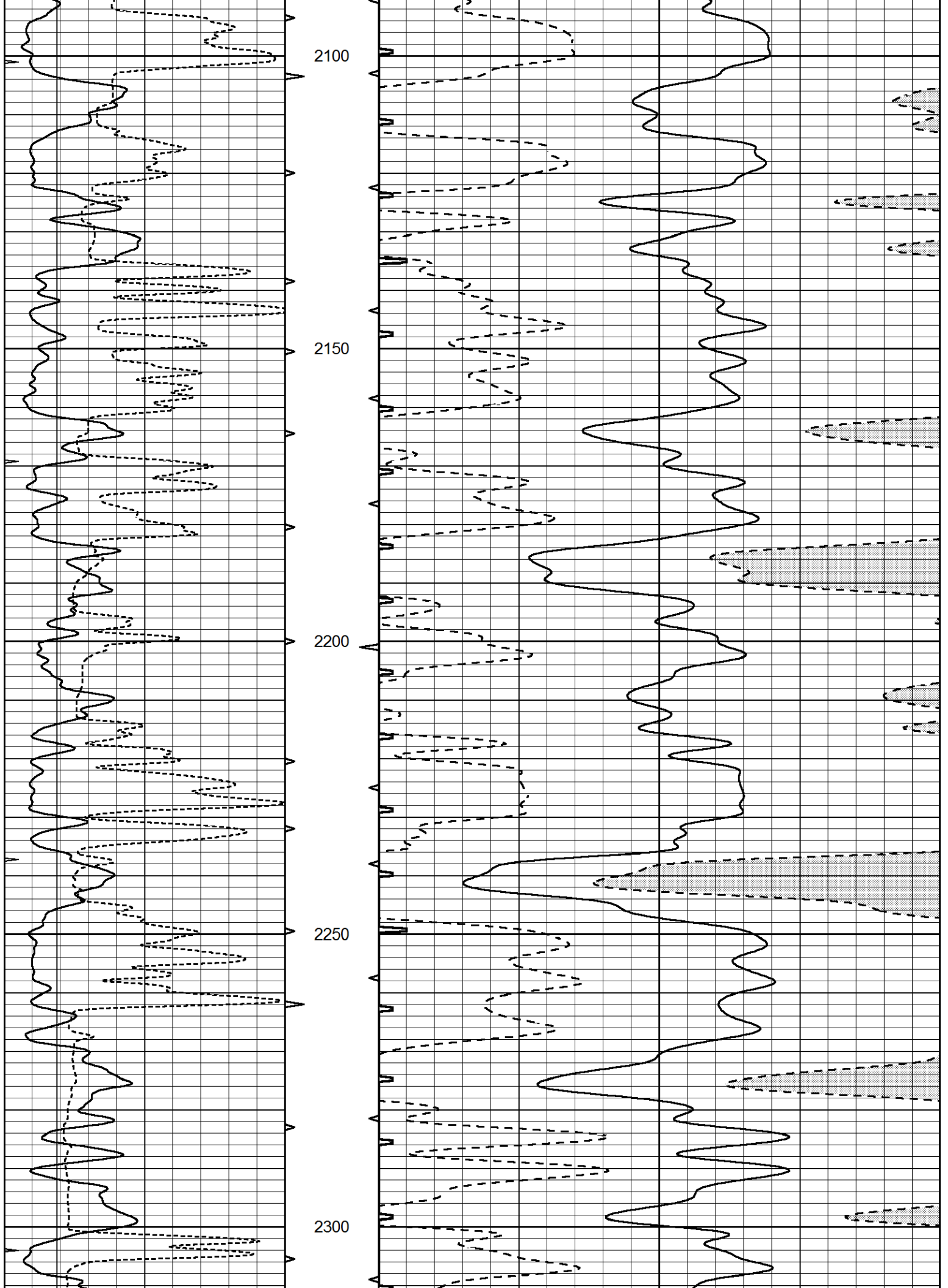


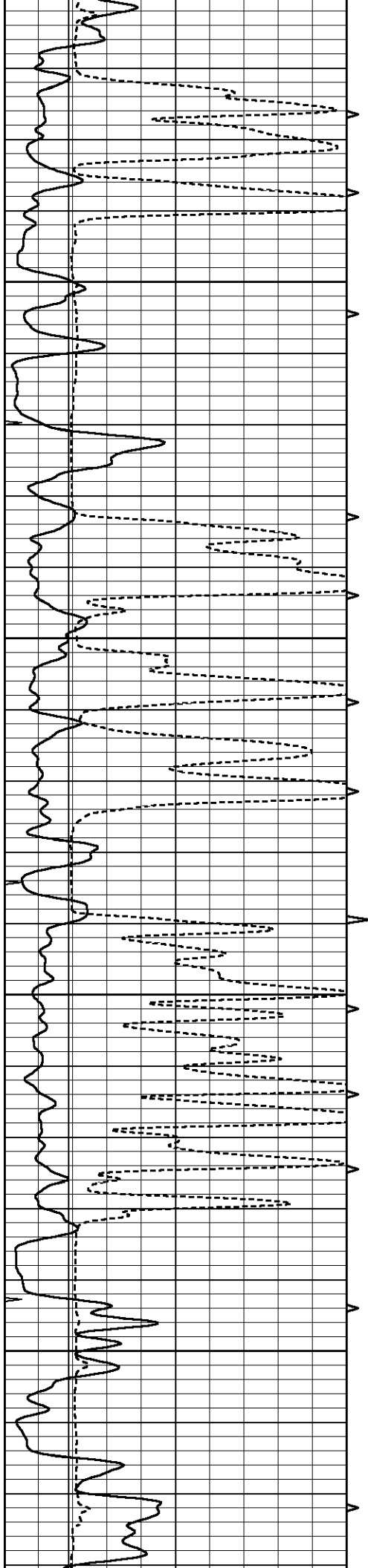










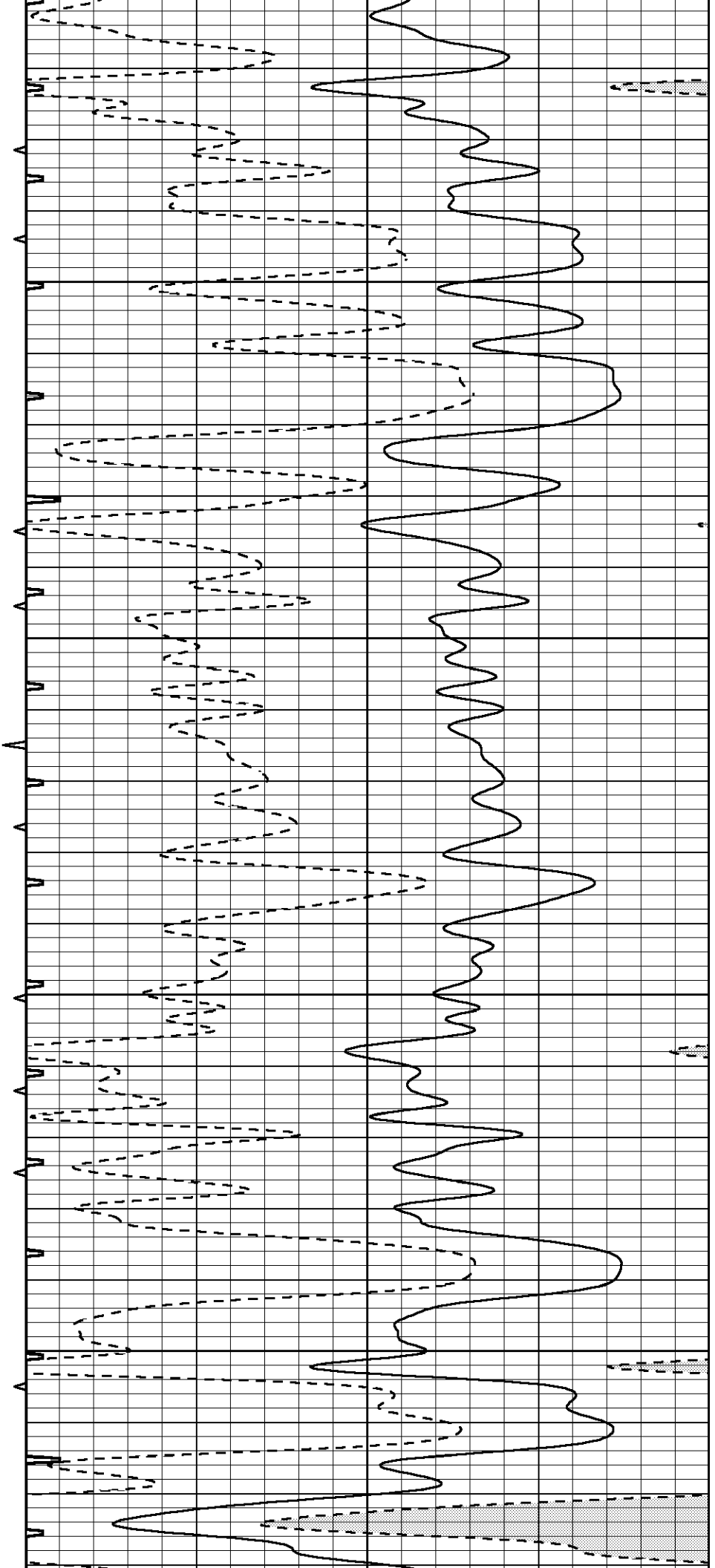


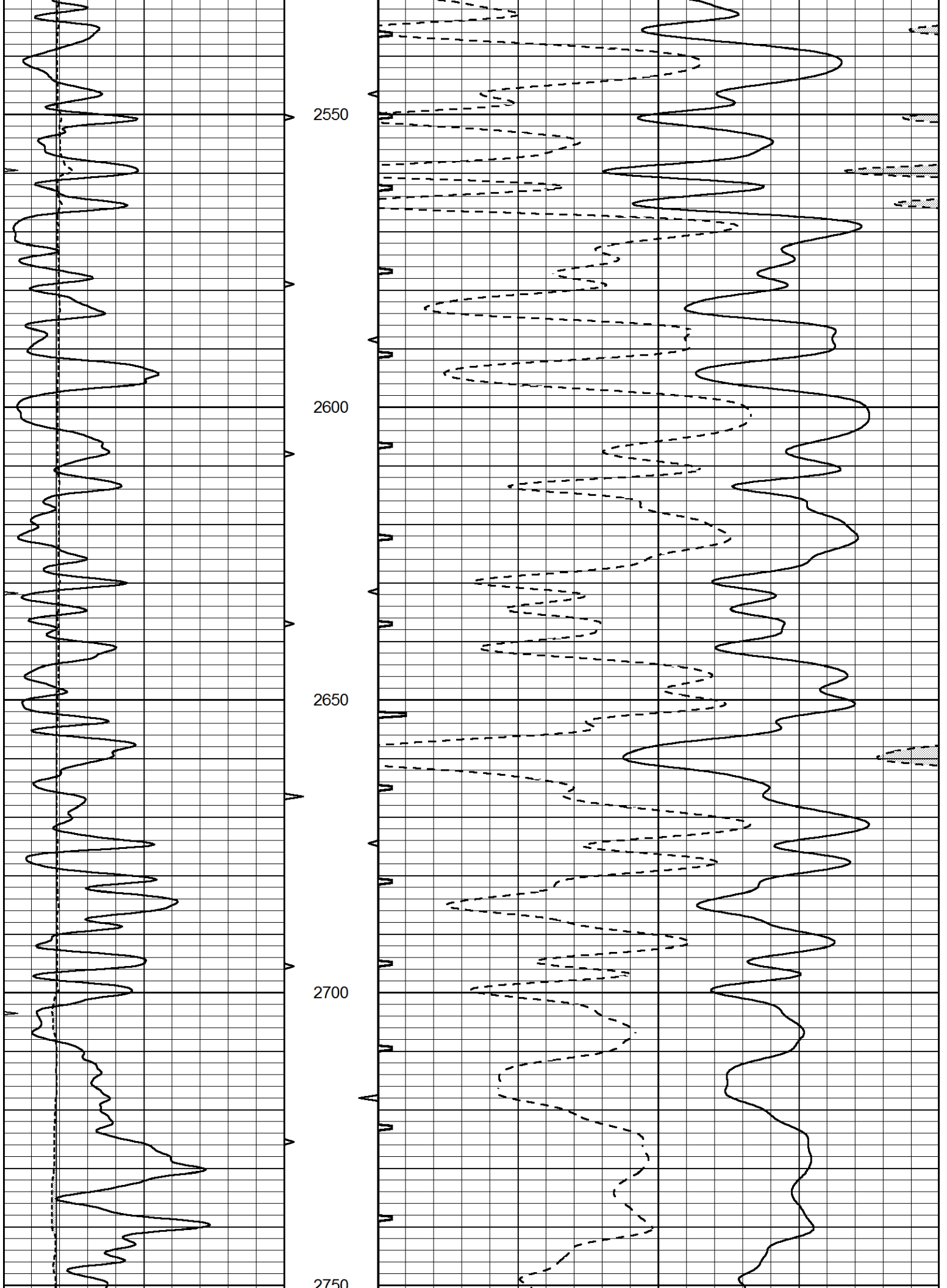
2350

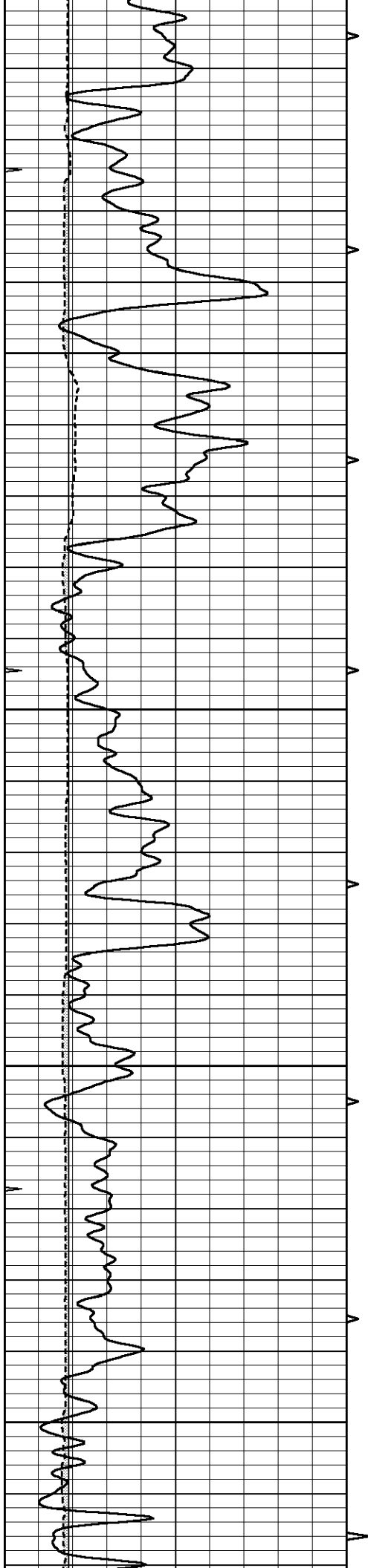
2400

2450

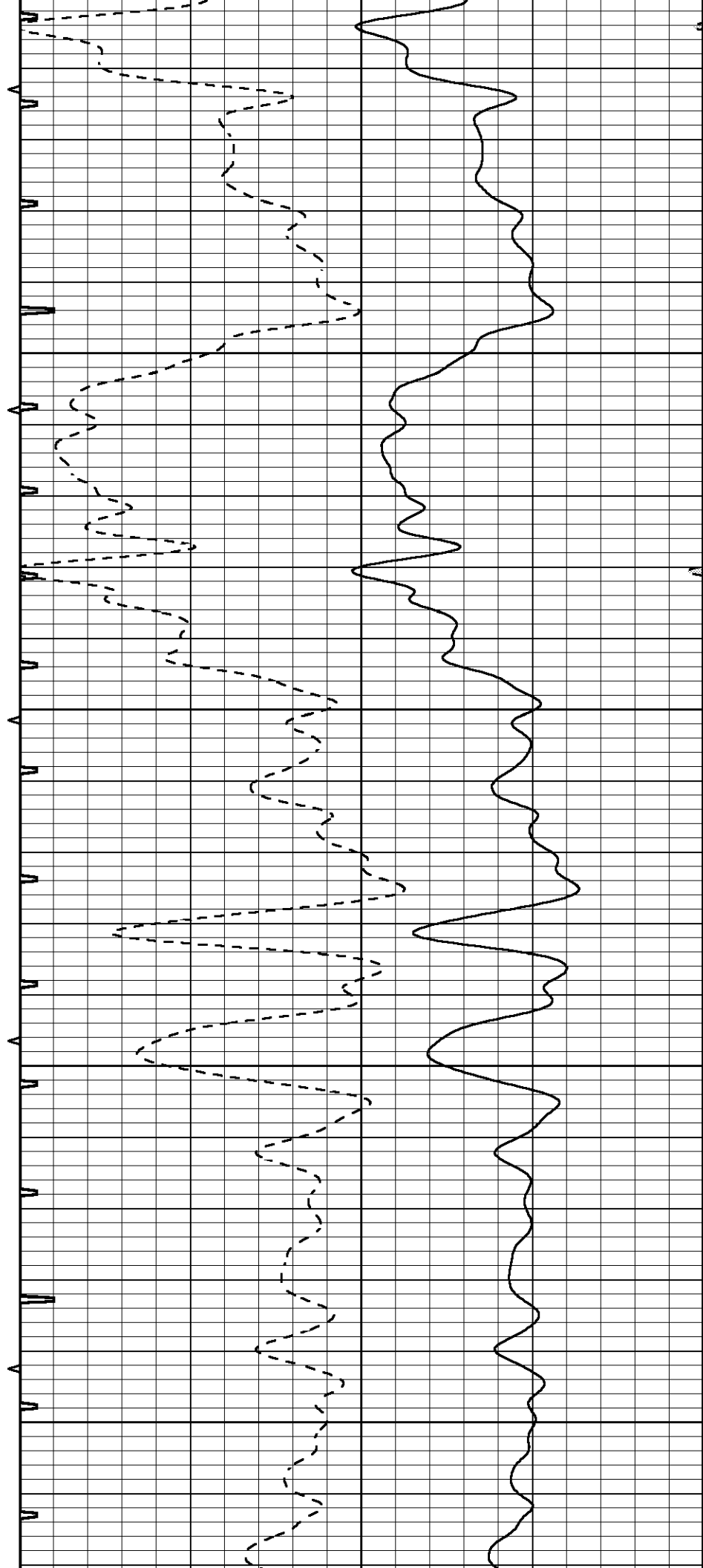
2500

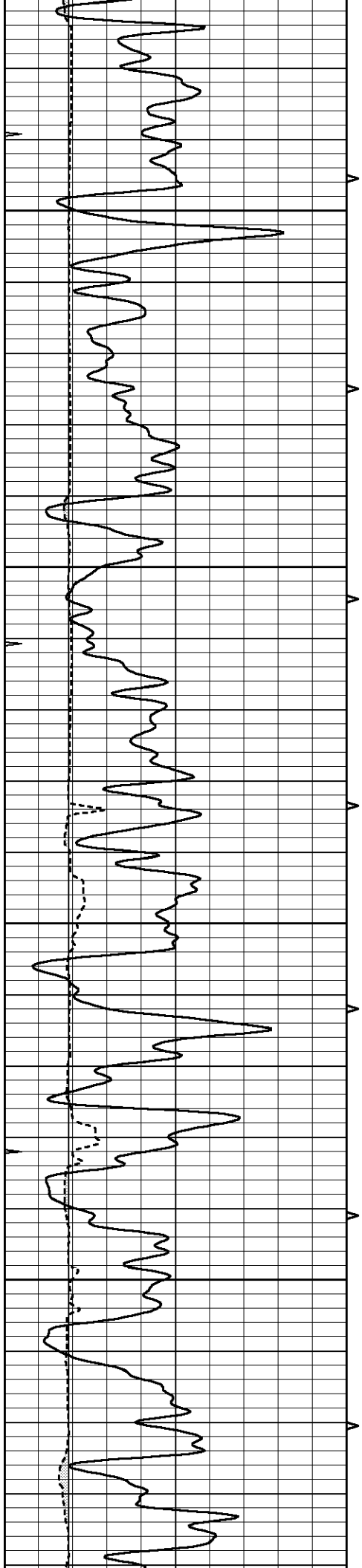






2750
2800
2850
2900
2950



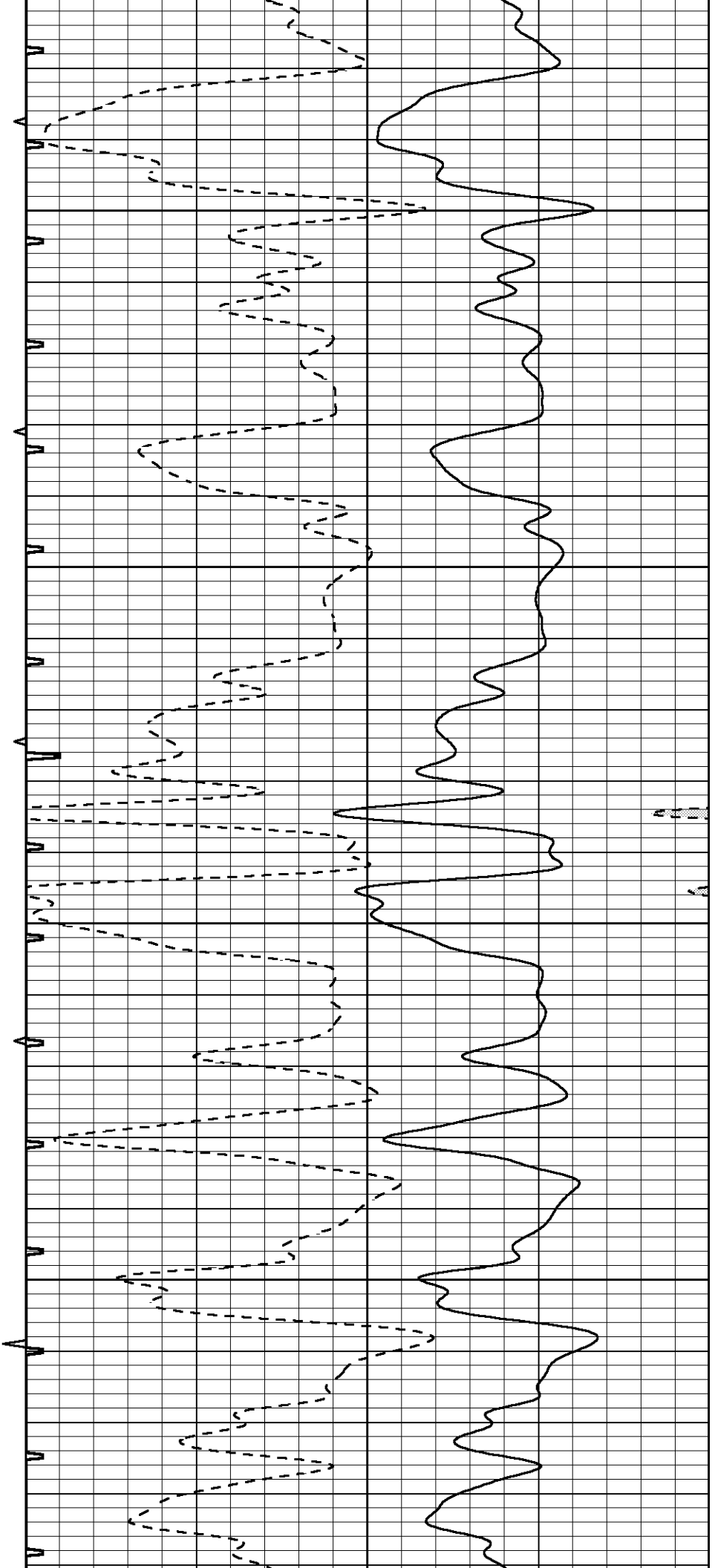


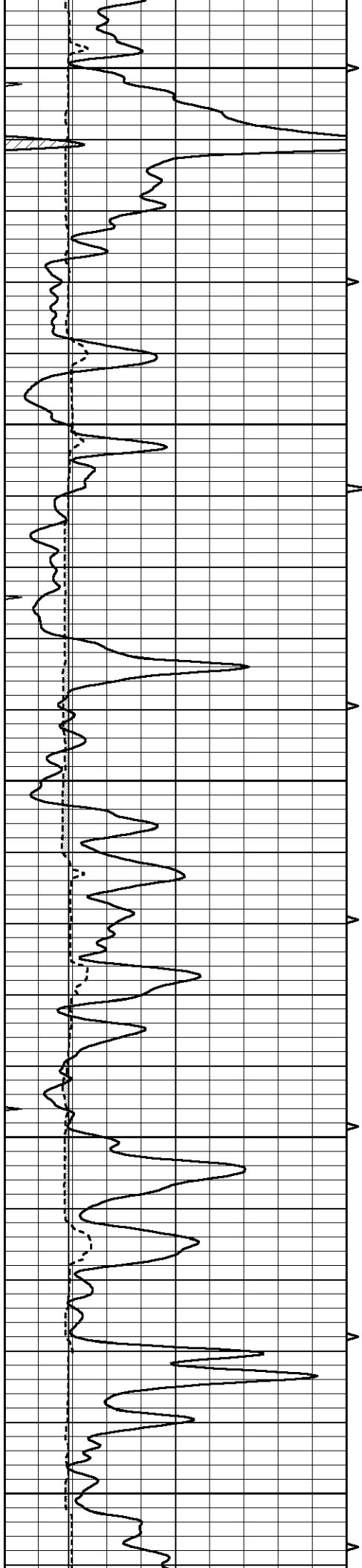
3000

3050

3100

3150





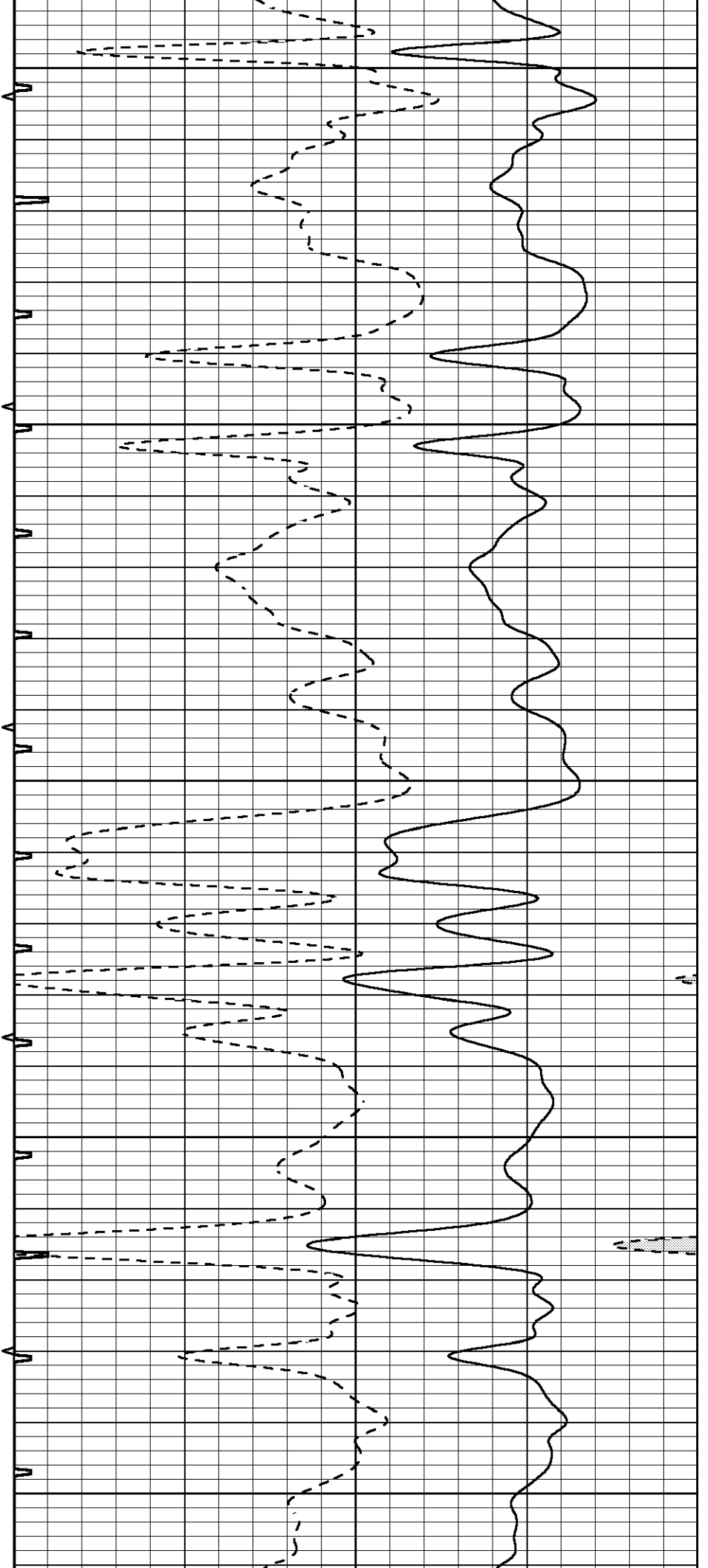
3200

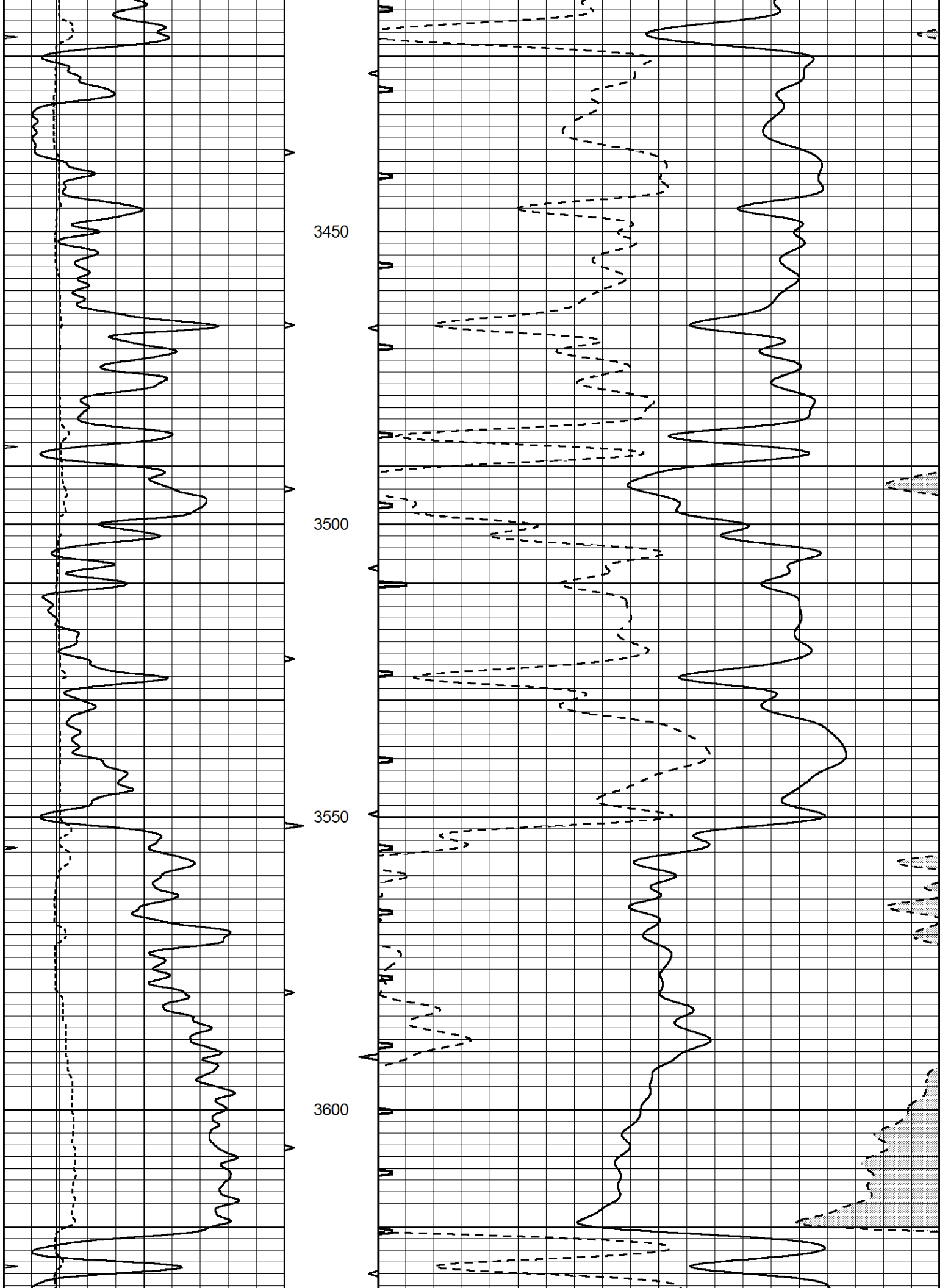
3250

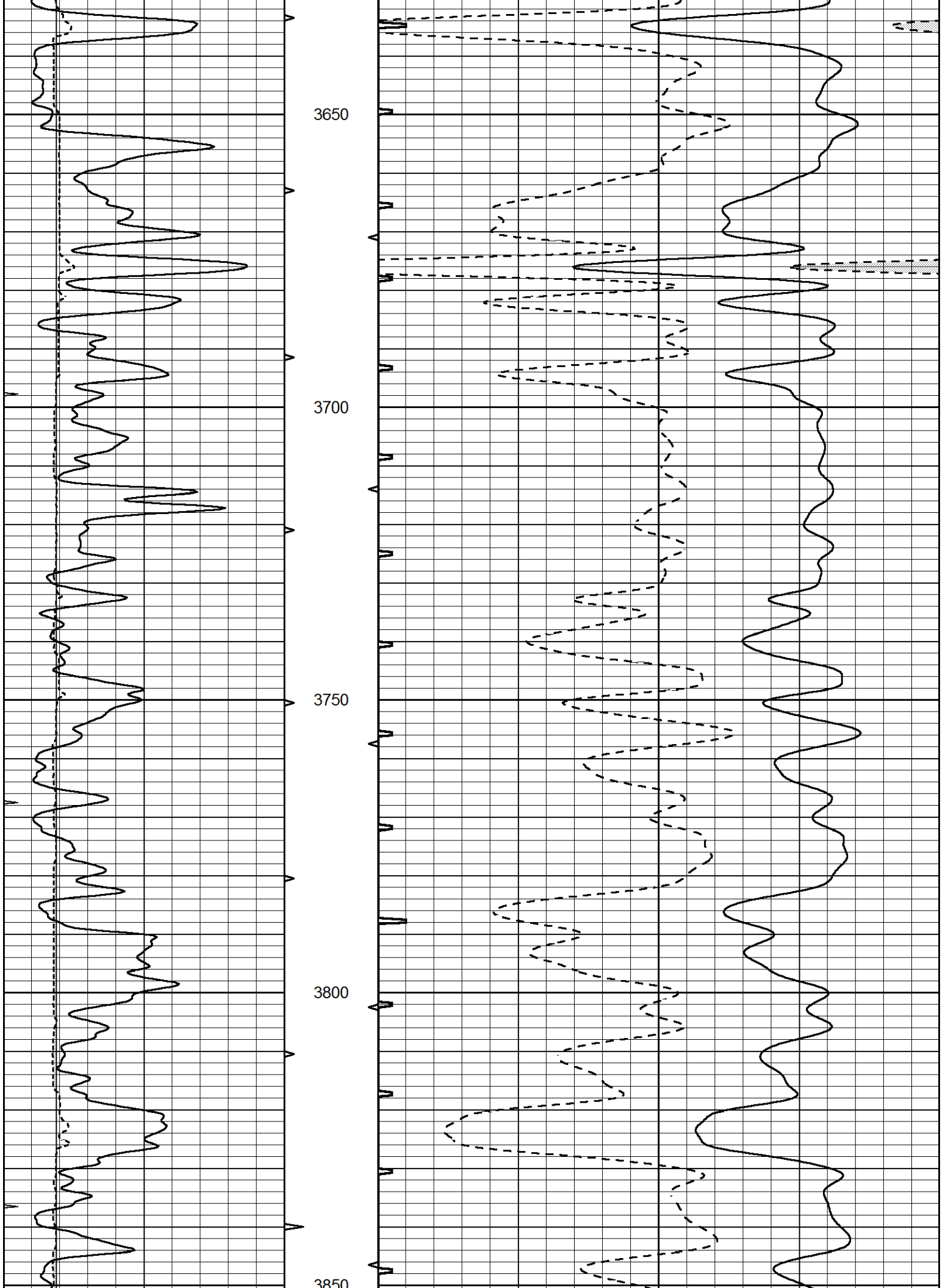
3300

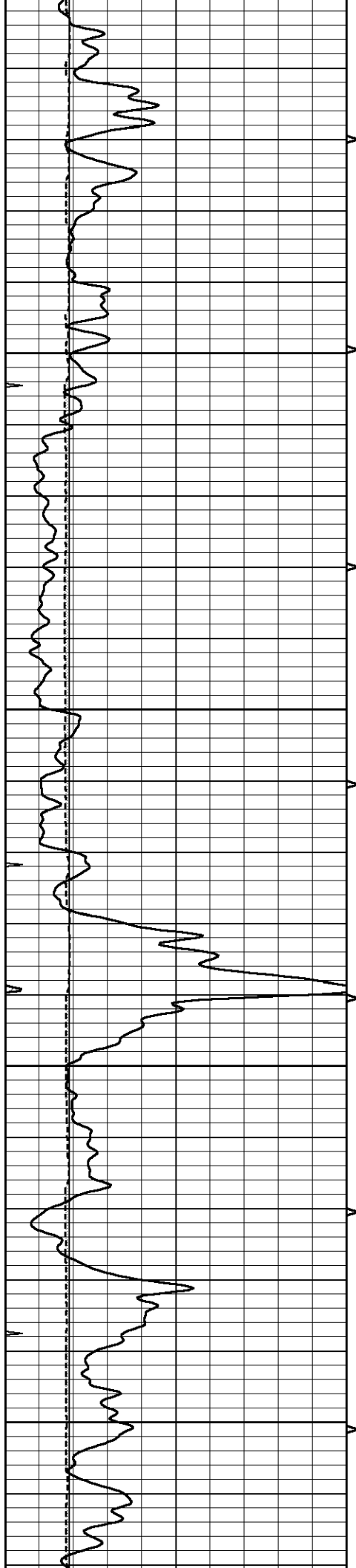
3350

3400

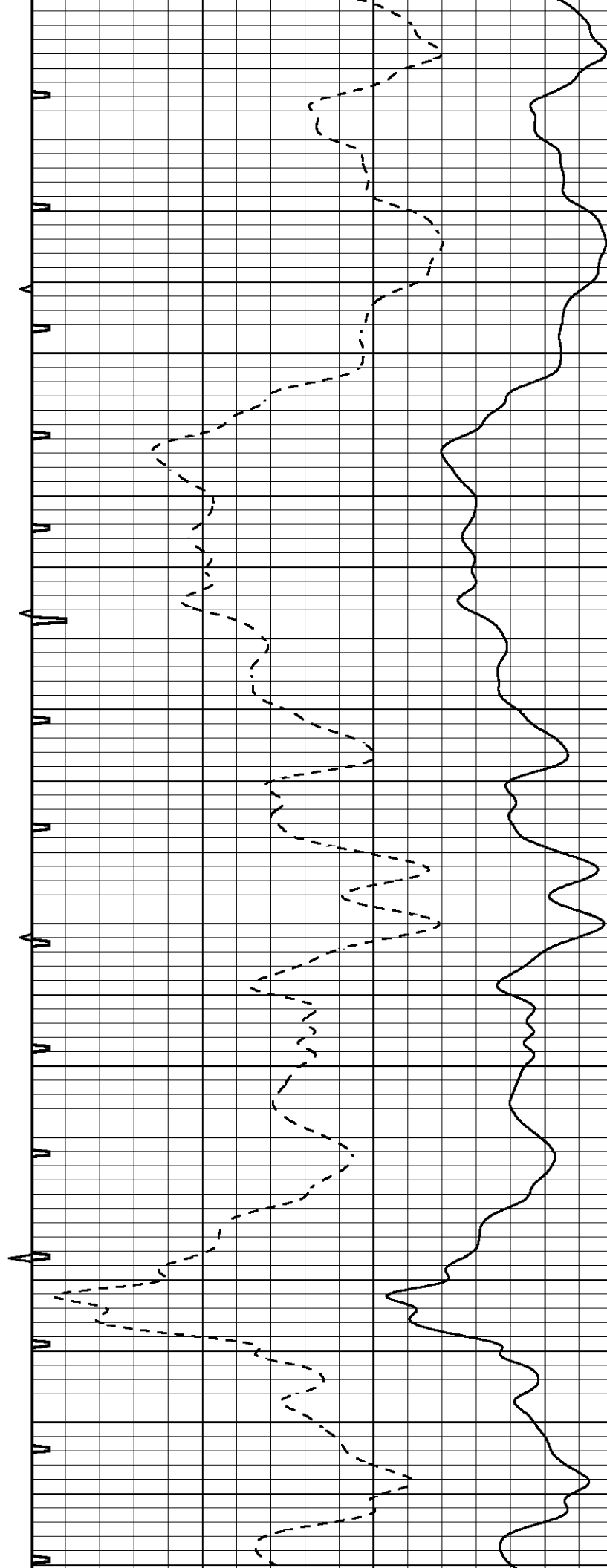


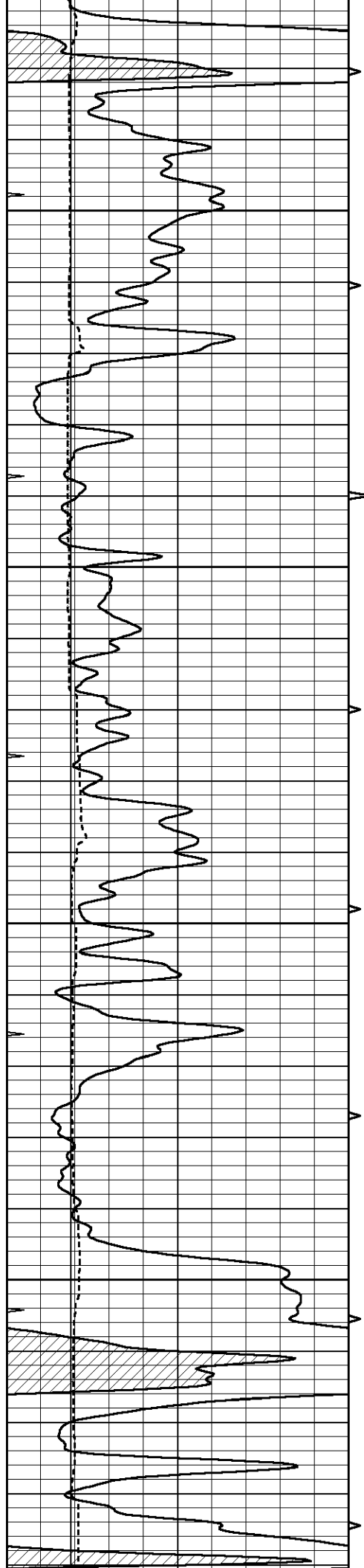






3900
3950
4000
4050



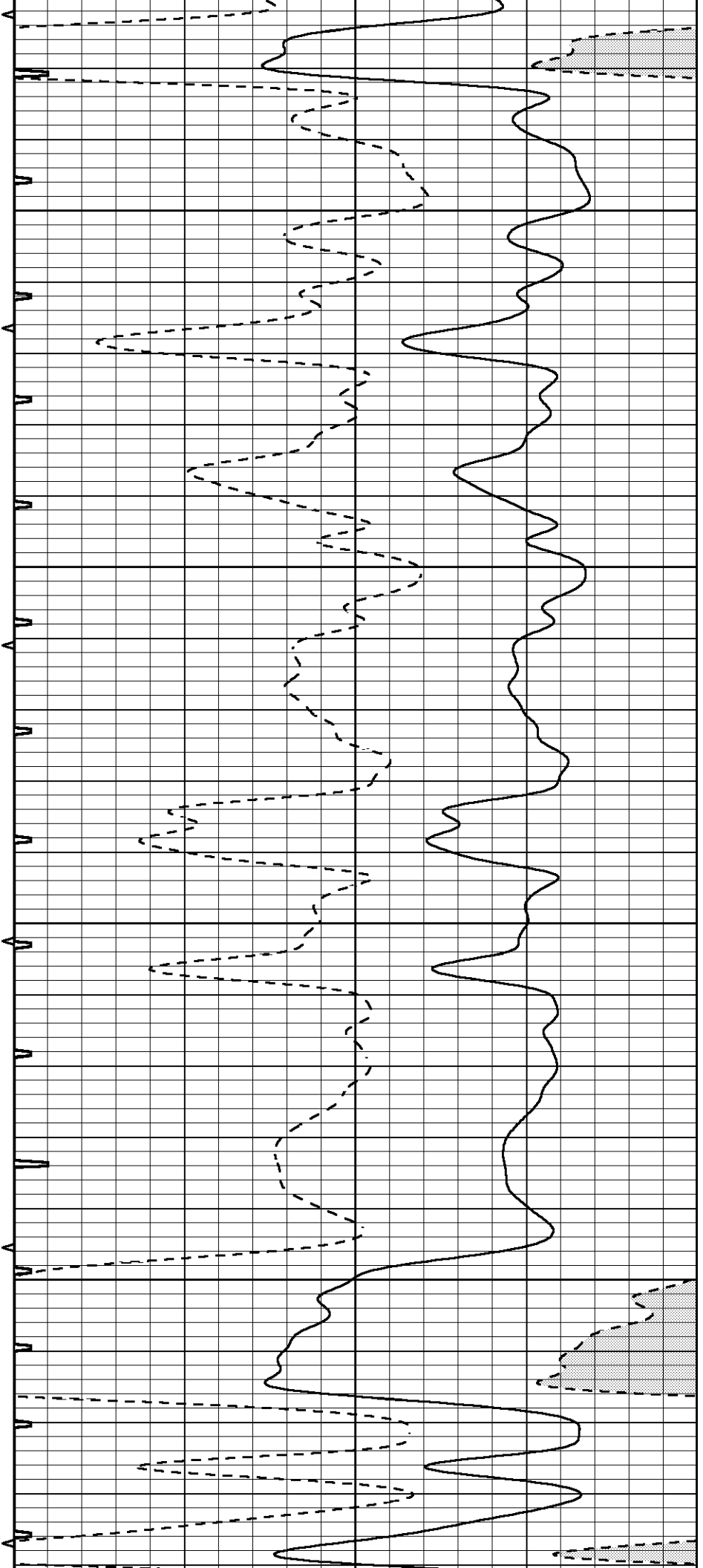


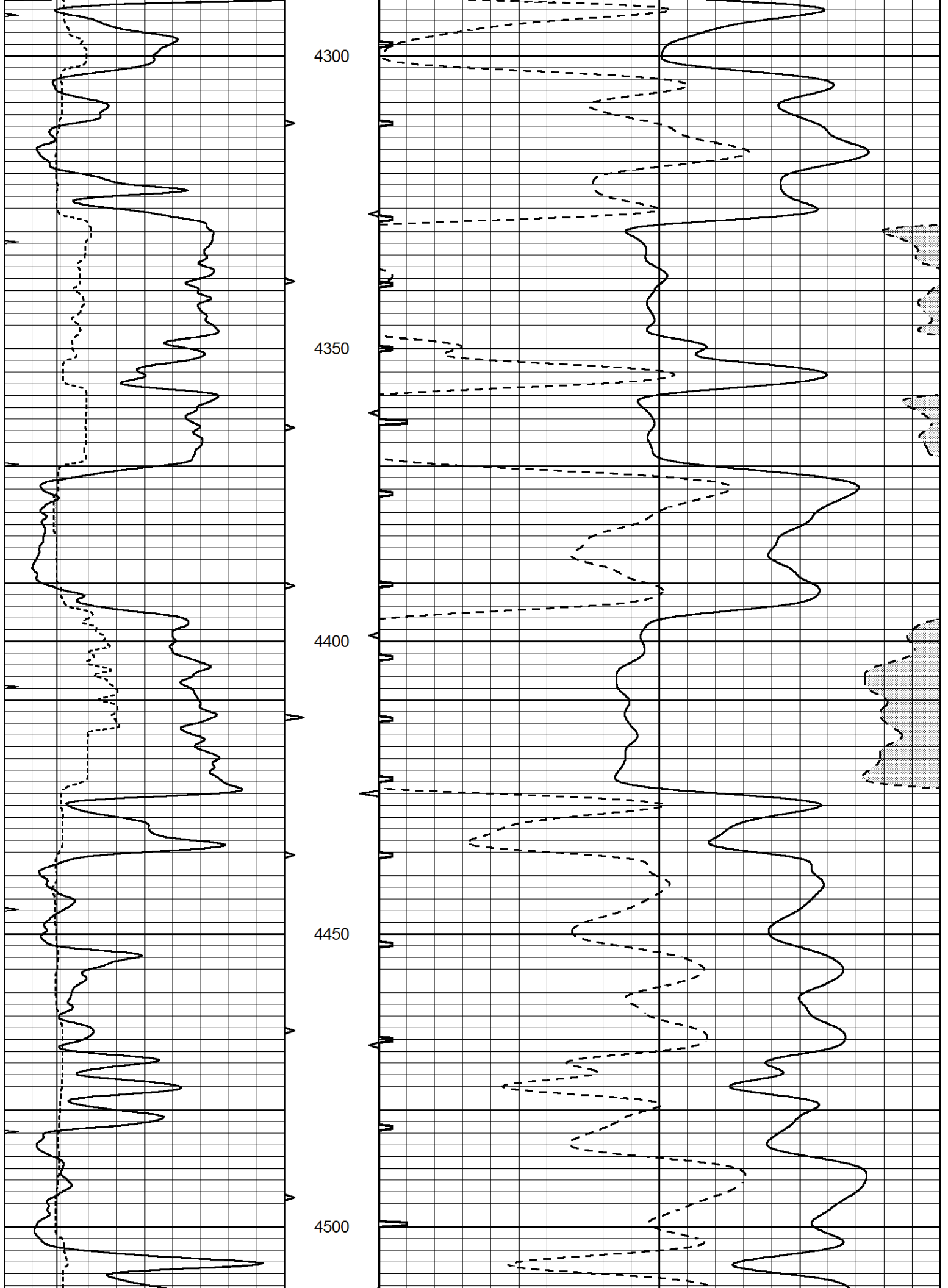
4100

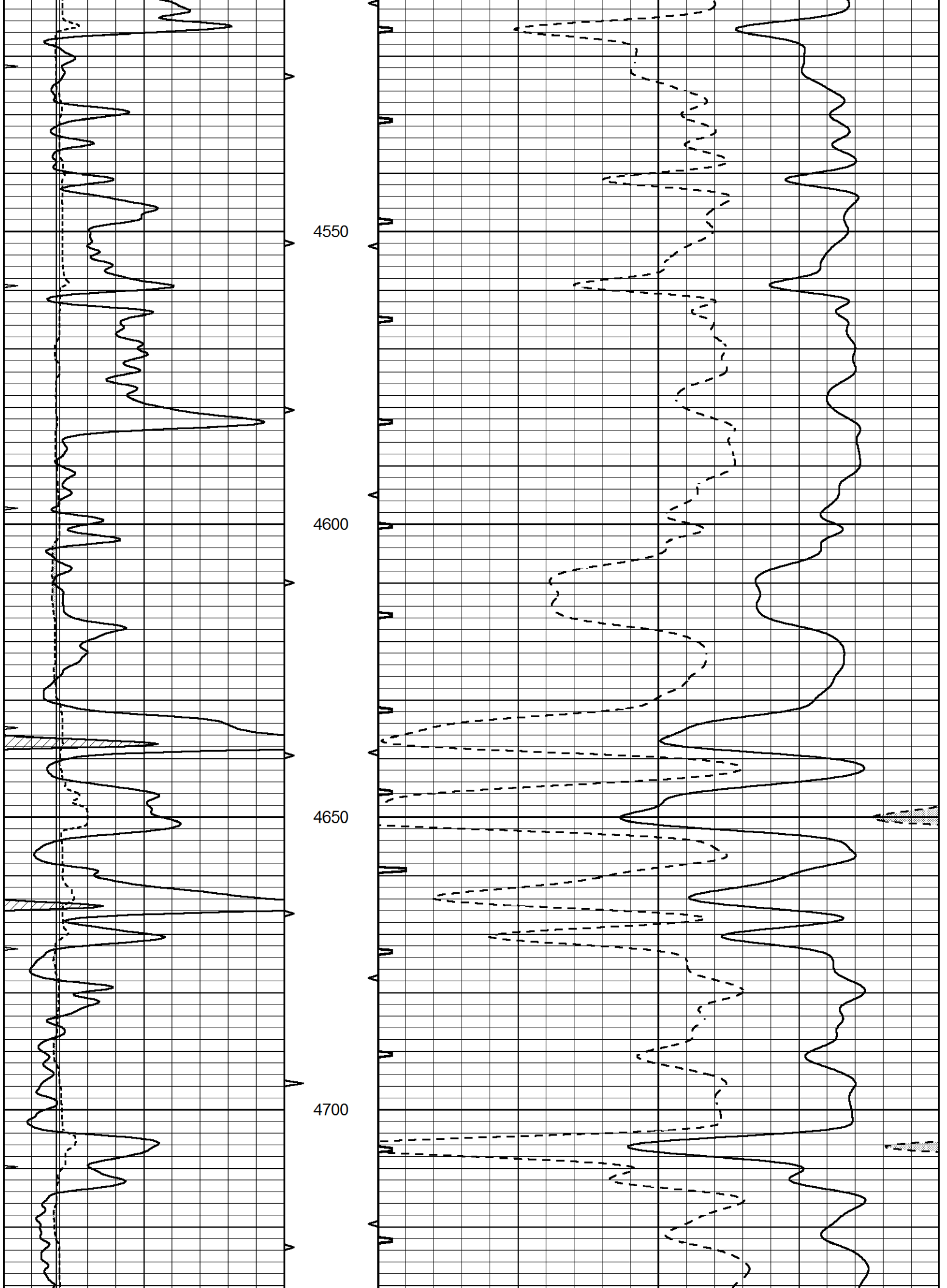
4150

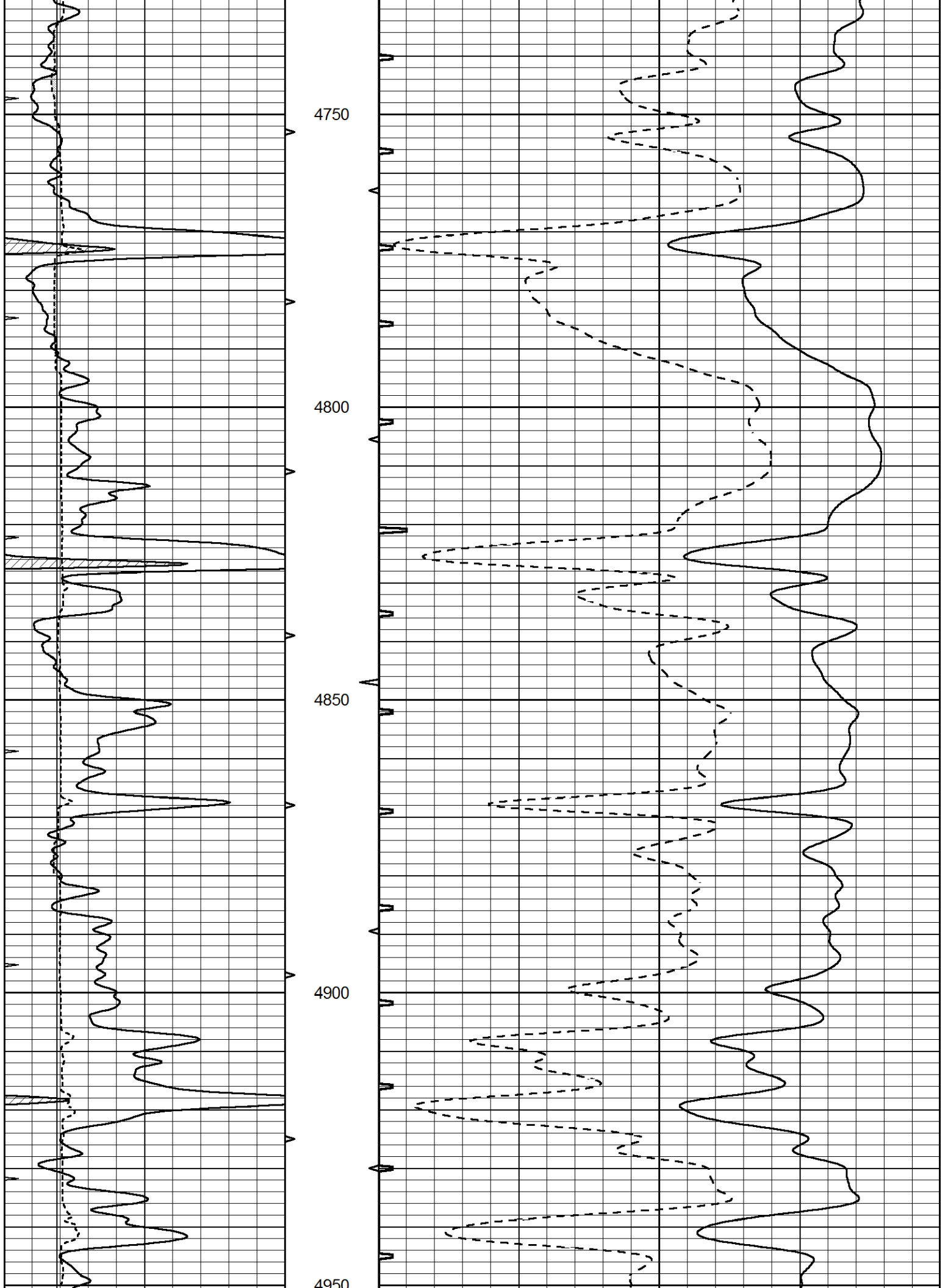
4200

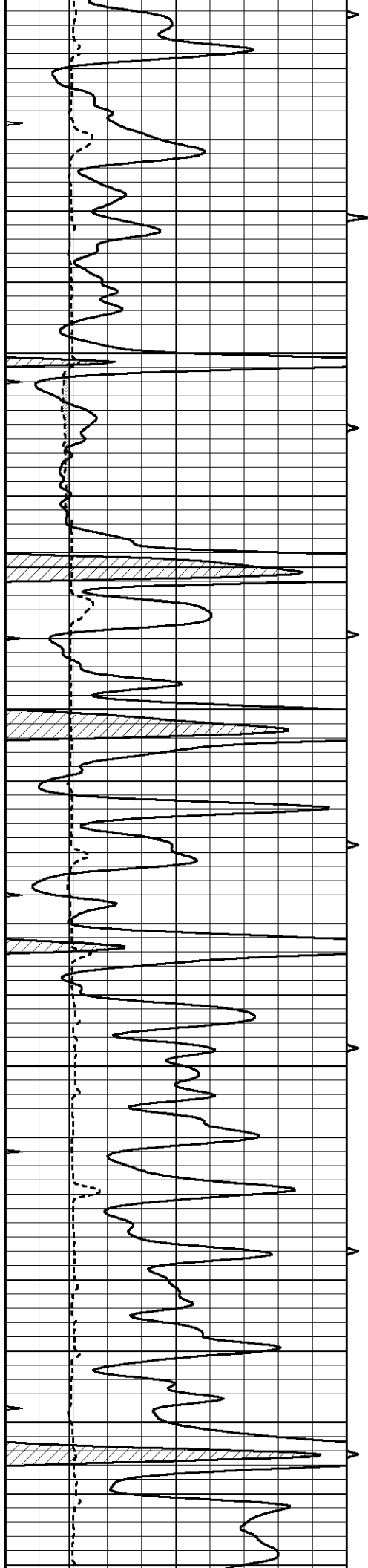
4250



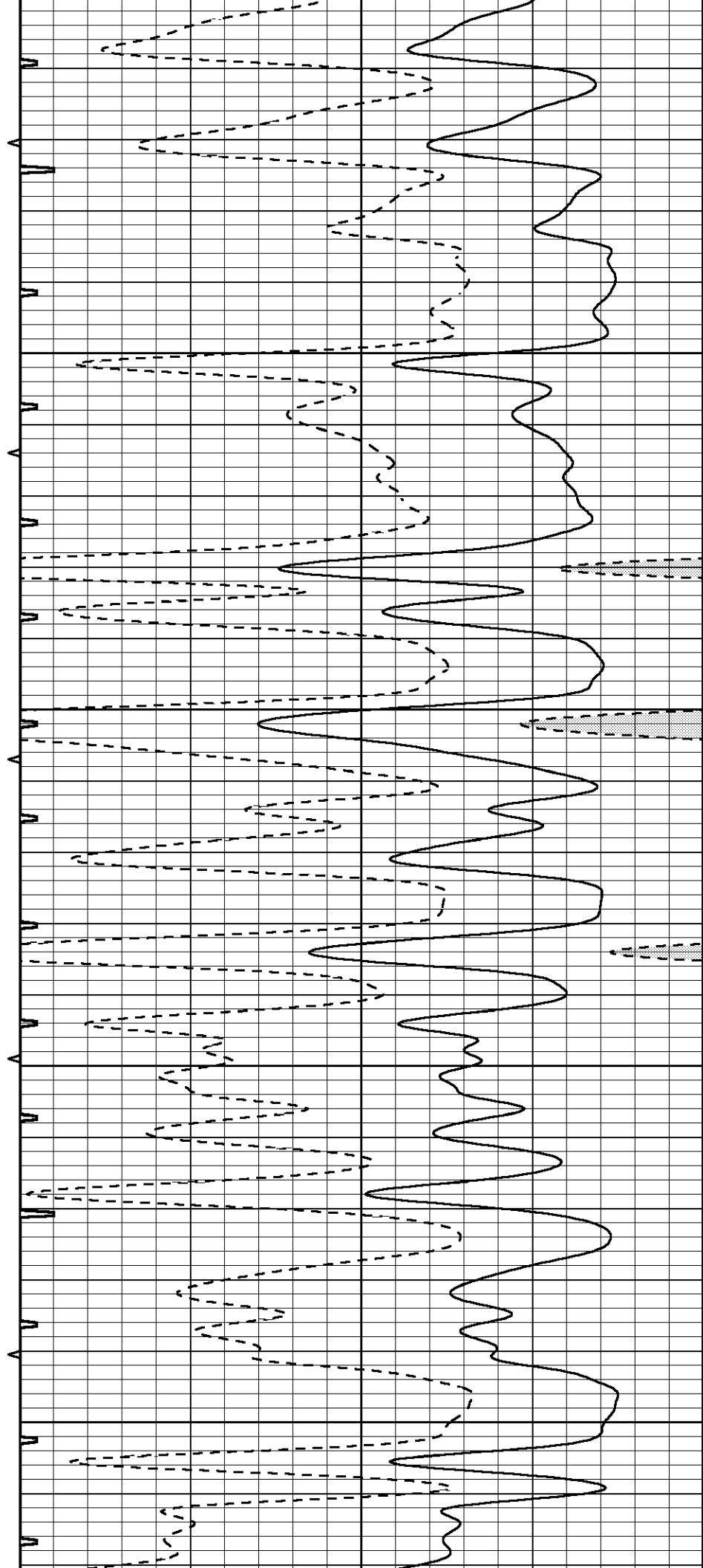


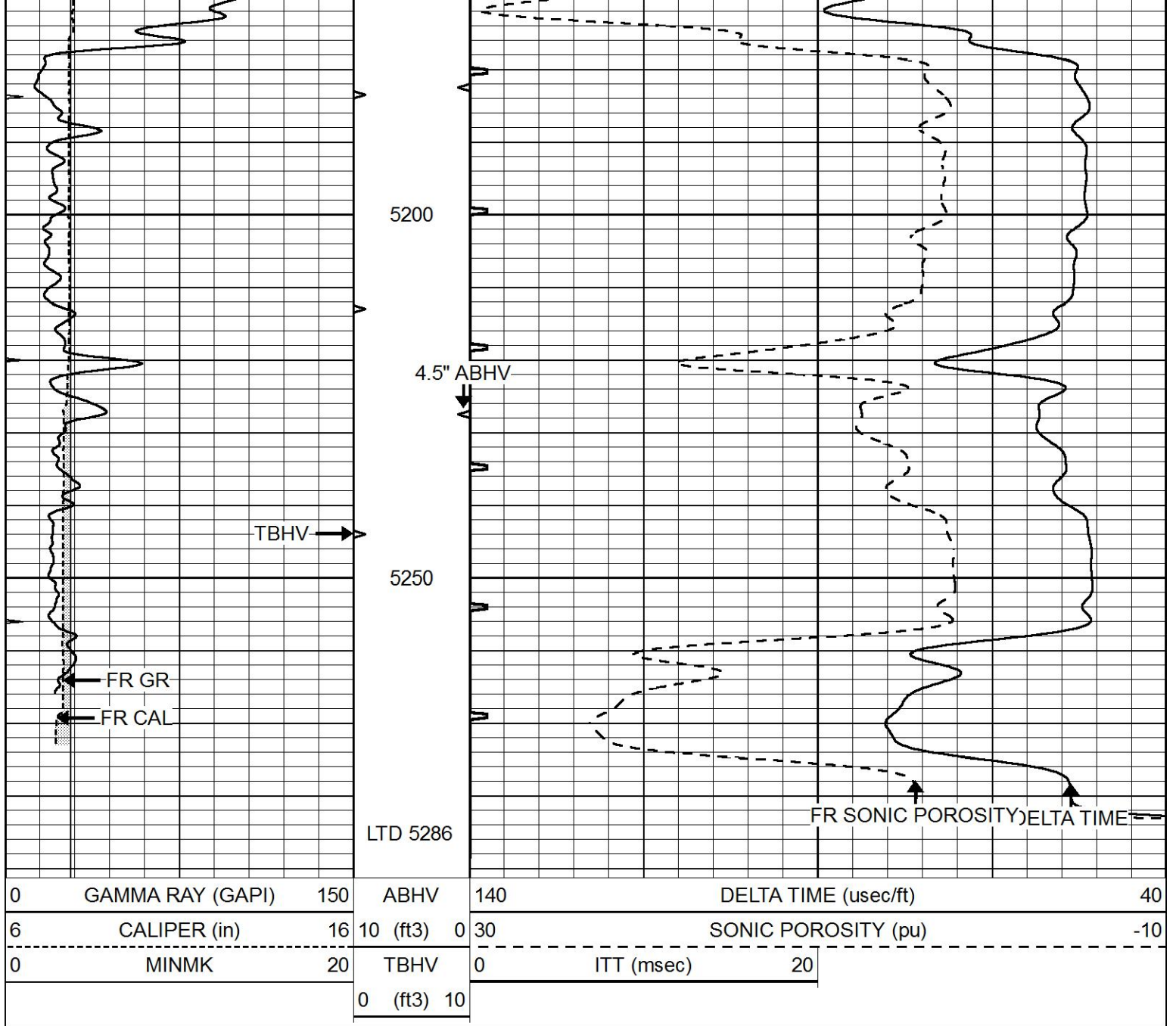






5000
5050
5100
5150

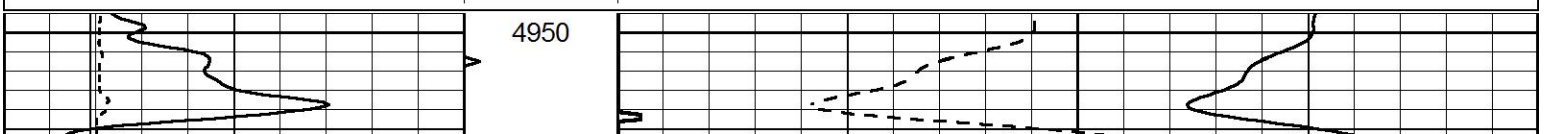


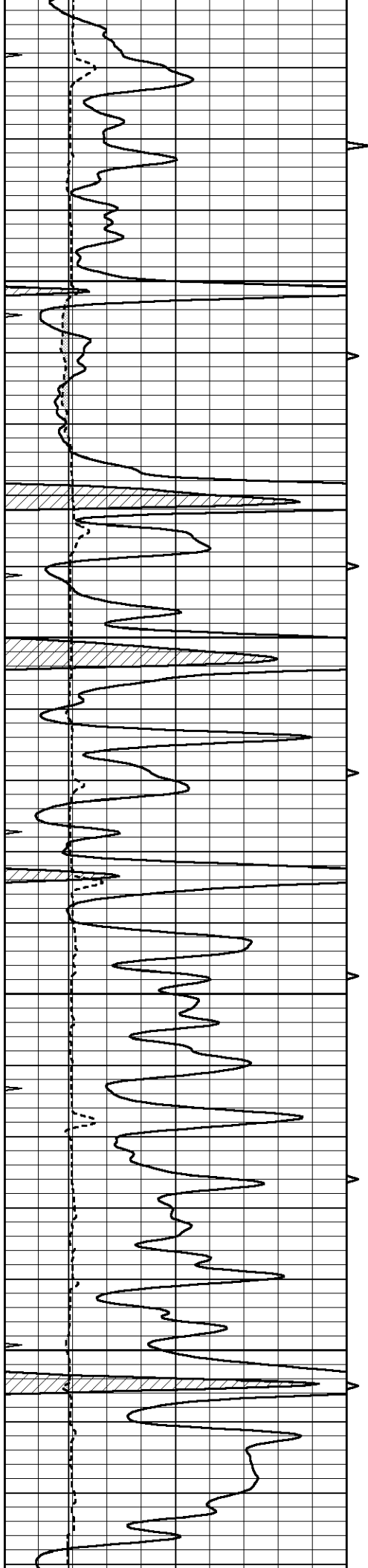


REPEAT SECTION

Database File 7313pe.db
 Dataset Pathname pass5.4
 Presentation Format slt
 Dataset Creation Fri Aug 04 17:42:09 2023
 Charted by Depth in Feet scaled 1:240

0	GAMMA RAY (GAPI)	150	ABHV	140	DELTA TIME (usec/ft)	40
6	CALIPER (in)	16	10 (ft3)	0 30	SONIC POROSITY (pu)	-10
0	MINMK	20	TBHV	0	ITT (msec)	20
			0 (ft3)	10		



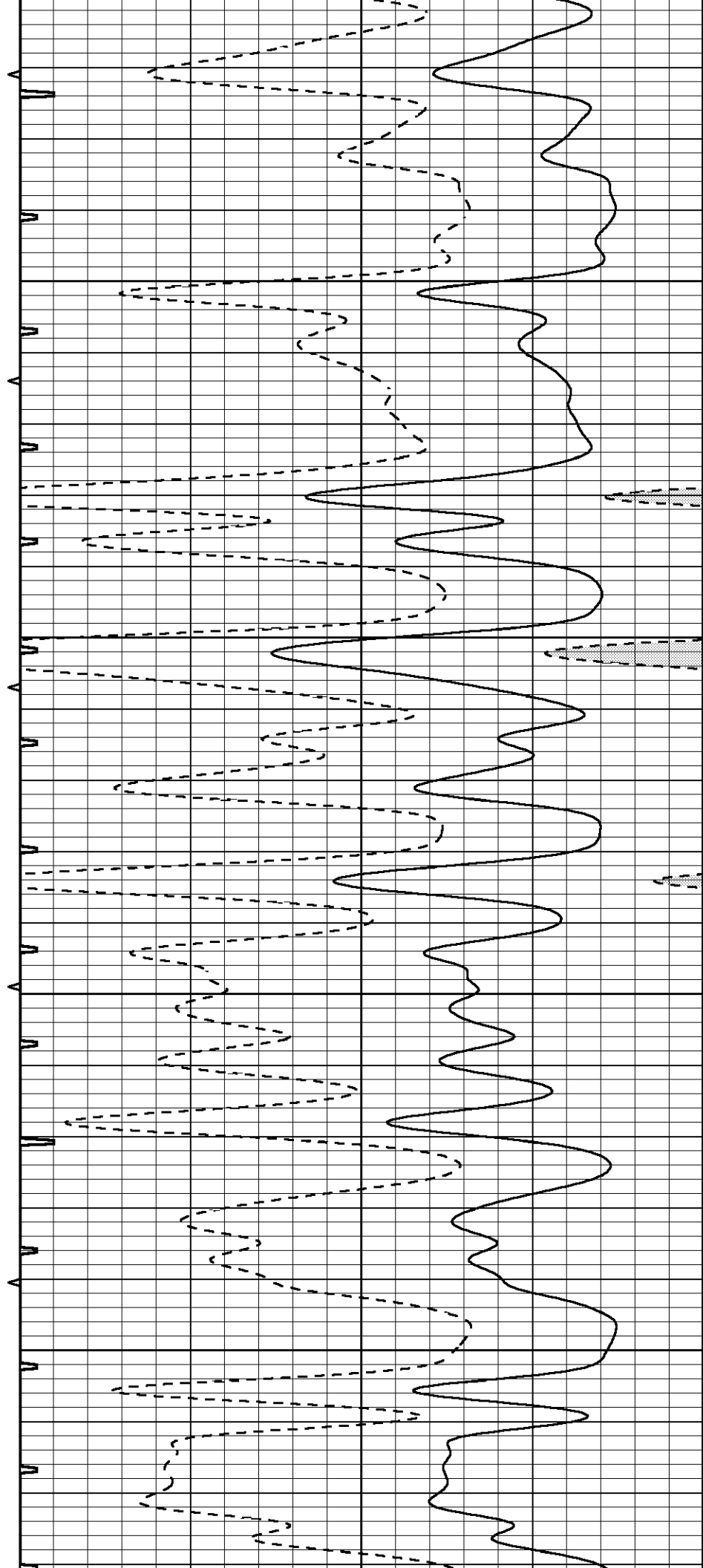


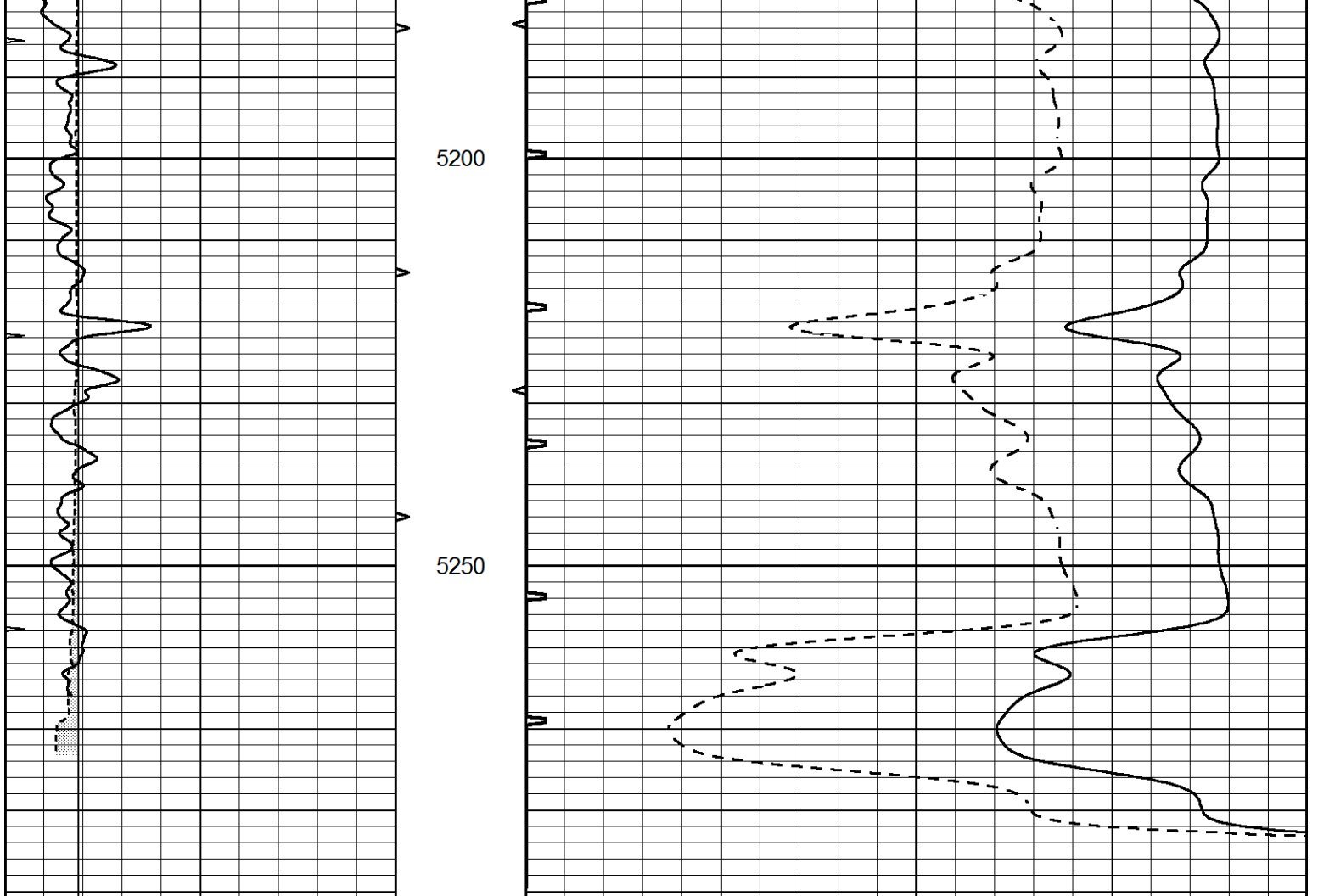
5000

5050

5100

5150





0	GAMMA RAY (GAPI)	150	ABHV	140	DELTA TIME (usec/ft)	40
6	CALIPER (in)	16	10 (ft3) 0	30	SONIC POROSITY (pu)	-10
0	MINMK	20	TBHV	0	ITT (msec)	20
			0 (ft3) 10			