



MIDWEST SURVEYS
 LOGGING - PERFORATING - CONSULTING SERVICES
 P.O. Box 68, Osawatomie, KS 66064
 913.755.2128

GAMMA RAY / NEUTRON / CCL

File No. _____

Company Southern Sky Energy, LLC

Well Revey No. - 48

Field Paola - Rantoul

County Franklin State Kansas

Location 2145' FSL & 1700' FEL

SW-NE-NW-SE

Sec. 30 Typ. 15s Rge. 21e

Permament Datum GL Elevation 1003'

Log Measured From GL

Drilling Measured From GL

Date 08-01-2025

Run Number One

Depth Driller 820.0

Depth Logger 786.9

Bottom Logged Interval 765.9

Top Log Interval 20.0

Fluid Level Fall

Type Fluid Water

Density / Viscosity NA

Salinity - PPM Cl NA

Max Recorded Temp NA

Estimated Cement Top 0.0

Equipment No. Location 107 Osawatimie

Recorded By Steve Mandisch

Witnessed By Brad Williams

RUN	BIT	FROM	TO	SIZE	WGHT	FROM	TO
One	9.875"	0.0	20.0	7.00"	15.0	0.0	20.0
Two	5.875"	20.0	820.0	2.875"	6.5	0.0	789.4

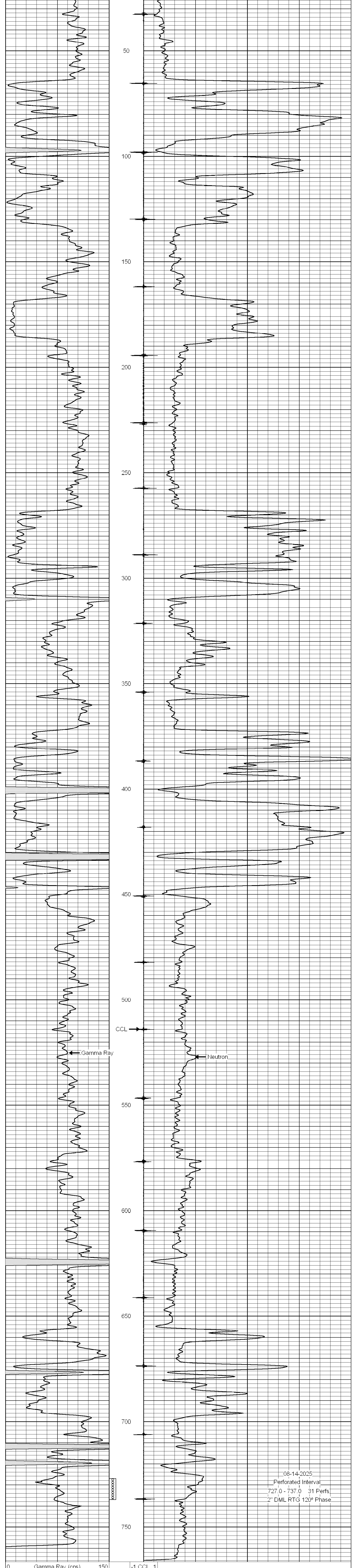
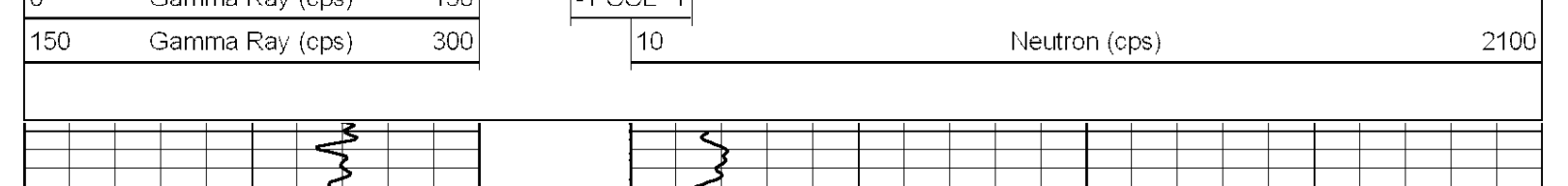
<<< Fold Here >>>

All interpretations are opinions based on inferences from electrical or other measurements and we cannot and do not guarantee the accuracy or correctness of any interpretation, and we shall not, except in the case of gross or willful negligence on our part, be liable or responsible for any loss, costs, damages, or expenses incurred or sustained by anyone resulting from any interpretation made by any of our officers, agents or employees. These interpretations are also subject to our general terms and conditions set out in our current Price Schedule.

Comments

Drilling Contractor :
 TDR Construction, Inc.

Database File: revey 48.db
 Dataset Pathname: pass1
 Presentation Format: gr-n-ccl
 Dataset Creation: Fri Aug 01 13:06:48 2025 by Log SCH 111116
 Charted by: Depth in Feet scaled 1:240



08-14-2025
 Perforated Interval
 727.0 - 737.0 31 Perfs
 2" DML RTG 120° Phase

