



**MIDWEST SURVEYS**  
 LOGGING - PERFORATING - CONSULTING SERVICES  
 P.O. Box 68, Osawatomie, KS 66064  
 913 / 755 - 2128

**GAMMA RAY / NEUTRON / CCL**

File No. Company Colt Energy, Inc.  
 Well Charlotte Hobbs No.- 69  
 Field Iola  
 County Allen State Kansas

Location 578' FNL & 1078' FWL  
 SE-NE-NW-NW  
 Other Services Perforate

Sec. 9 Typ. 24s Rgs. 18e  
 Permament Datum GL Elevation 1025'  
 Log Measured From GL K.B. NA  
 Drilling Measured From GL D.F. NA  
 G.L. 1028'

Date 10-23-2023  
 Run Number One  
 Depth Driller 1046.0  
 Depth Logger 1030.8  
 Bottom Logged Interval 1029.8  
 Top Log Interval 20.0  
 Fluid Level Full

Type Fluid Water  
 Density / Viscosity NA  
 Salinity - PPM Cl NA  
 Max. Recorded Temp NA  
 Estimated Cement Top NA  
 Equipment No. 107 Location Osawatimie  
 Recorded By Steve Windisch  
 Witnessed By Wes Mooks

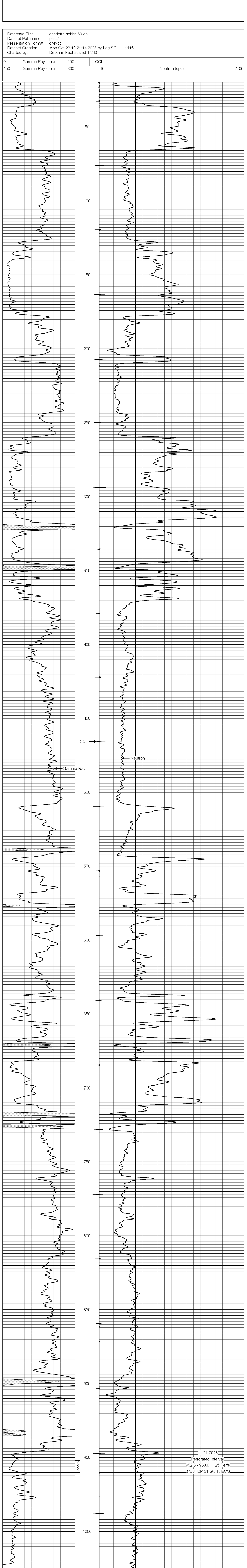
BORE-HOLE RECORD				CASING RECORD			
Run	BIT	FROM	TO	SIZE	WGT	FROM	TO
One	12.25"	0.0	20.0	8.625"	28.0	0.0	20.0
Two	6.75"	20.0	1046.0	4.50"	10.5	0.0	1039.5
					Set	At	1035.5

<<< Fold Here >>>  
 All interpretations are opinions based on inferences from electrical or other measurements and we cannot and do not guarantee the accuracy or correctness of any interpretation, and we shall not, except in the case of gross or willful negligence on our part, be liable or responsible for any loss, costs, damages, or expenses incurred or sustained by anyone resulting from any interpretation made by any of our officers, agents or employees. These interpretations are also subject to our general terms and conditions set out in our current Price Schedule.

Comments

Drilling Contractor :  
 Colt Energy, Inc.

Database File: charlotte hobbs 69.db  
 Dataset Pathname: pass1  
 Presentation Format: gr-n-ccl  
 Dataset Creation: Mon Oct 23 10:21:14 2023 by Log SCH 111116  
 Charted by: Depth in Feet scaled 1:240



11-21-2023  
 Perforated Interval  
 952.0 - 960.0 25 Perfs  
 3 3/8" DP 21 Gr. T. ECG