



DUAL INDUCTION LOG

Company SHELBY RESOURCES, LLC.
 Well DYMOND #1-5
 Field UNNAMED
 County PRATT State KANSAS

Location: API #: 15-151-22573-0000
 1978 FNL & 1132 FEL
 SW - NW - SE - NE
 SEC 5 TWP 29S RGE 14W
 Permanent Datum GROUND LEVEL Elevation 2034
 Log Measured From KELLY BUSHING 12' A.G.L.
 Drilling Measured From KELLY BUSHING
 Other Services
 CD/CNL/PE
 MEL/SON
 Elevation
 K.B. 2046
 D.F. 2044
 G.L. 2034

Date	10/12/23
Run Number	ONE
Depth Driller	4800
Depth Logger	4803
Bottom Logged Interval	4801
Top Log Interval	00
Casing Driller	8.625 @ 903
Casing Logger	903
Bit Size	7.875
Type Fluid in Hole	CHEMICAL MUD
Density / Viscosity	9.3+154
PH / Fluid Loss	11.0/8.8
Source of Sample	FLOWLINE
Rm @ Meas. Temp	.800 @ 76F
Rmt @ Meas. Temp	.600 @ 76F
Rmc @ Meas. Temp	.960 @ 76F
Source of Rmf / Rmc	MEASUREMENT
Rm @ BHT	.494 @ 123F
Time Circulation Stopped	2 HOURS
Time Logger on Bottom	11:00 P.M.
Maximum Recorded Temperature	123F
Equipment Number	3802
Location	HAYS, KANSAS
Recorded By	COLE ROBBEN
Witnessed By	JEREMY SHWARTZ

<<< Fold Here >>>

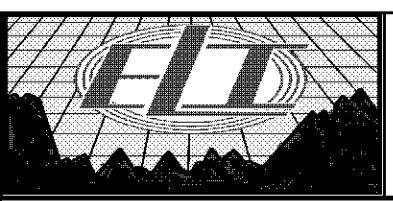
All interpretations are opinions based on inferences from electrical or other measurements and we cannot and do not guarantee the accuracy or correctness of any interpretation, and we shall not, except in the case of gross or willful negligence on our part, be liable or responsible for any loss, costs, damages, or expenses incurred or sustained by anyone resulting from any interpretation made by any of our officers, agents or employees. These interpretations are also subject to our general terms and conditions set out in our current Price Schedule.

Comments

THANK YOU FOR USING ELI WIRELINE SERVICES, HAYS, KS. (785) 628-6395

DIRECTIONS:

FROM PRATT, KANSAS GO WEST 7 MILES TO SW 70TH AVE., SOUTH 5 1/2 MILES, WEST INTO

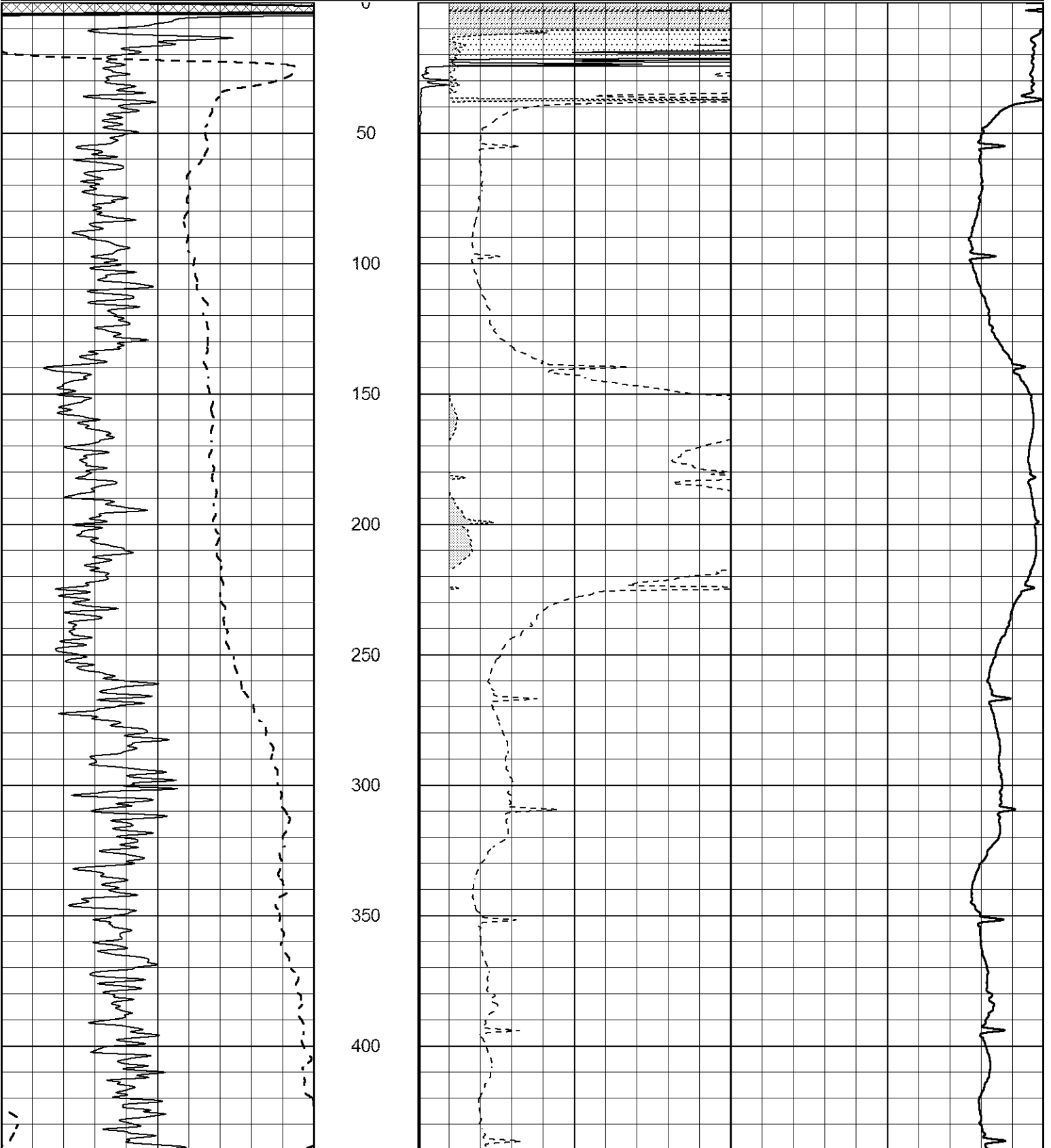


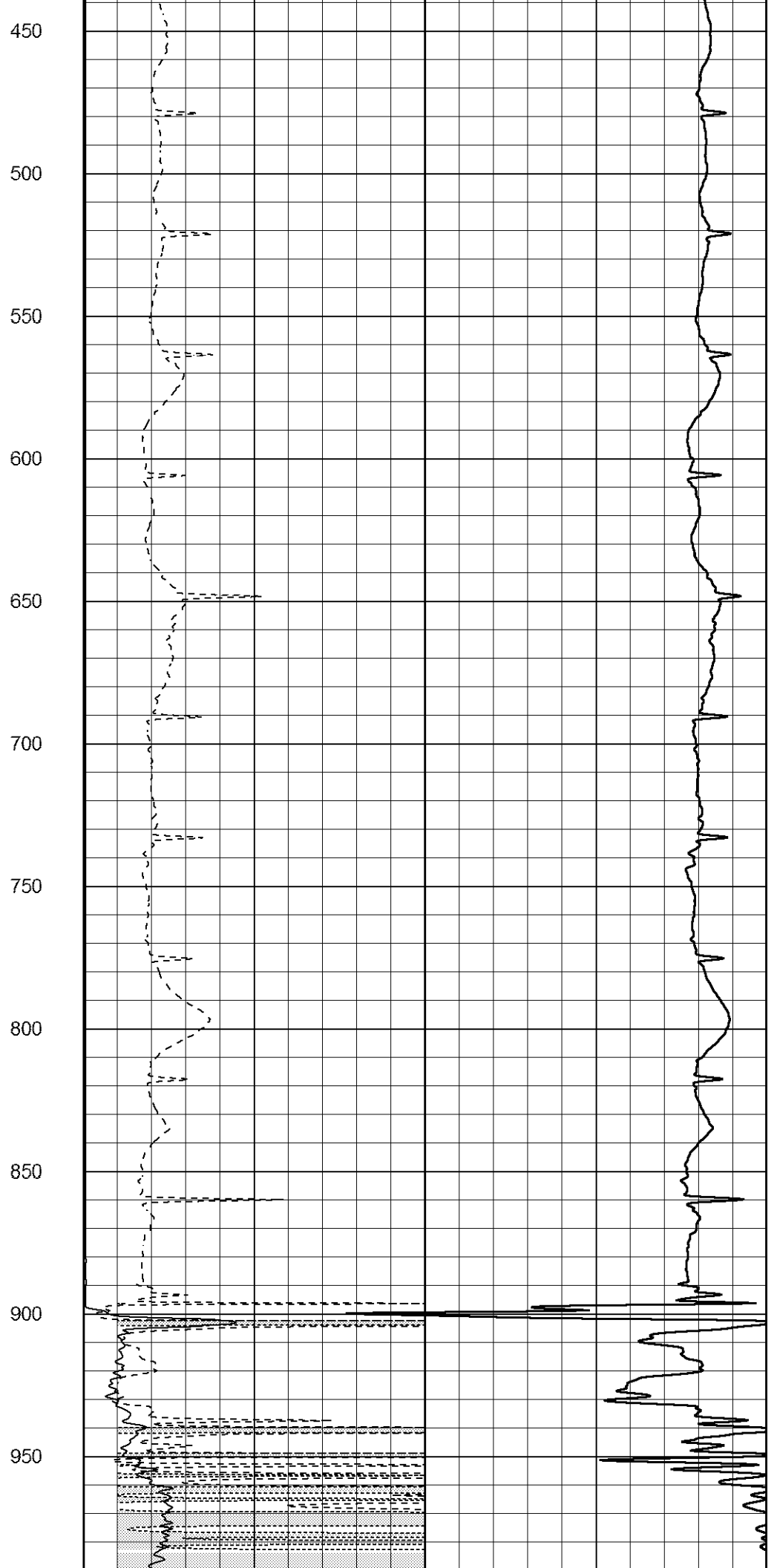
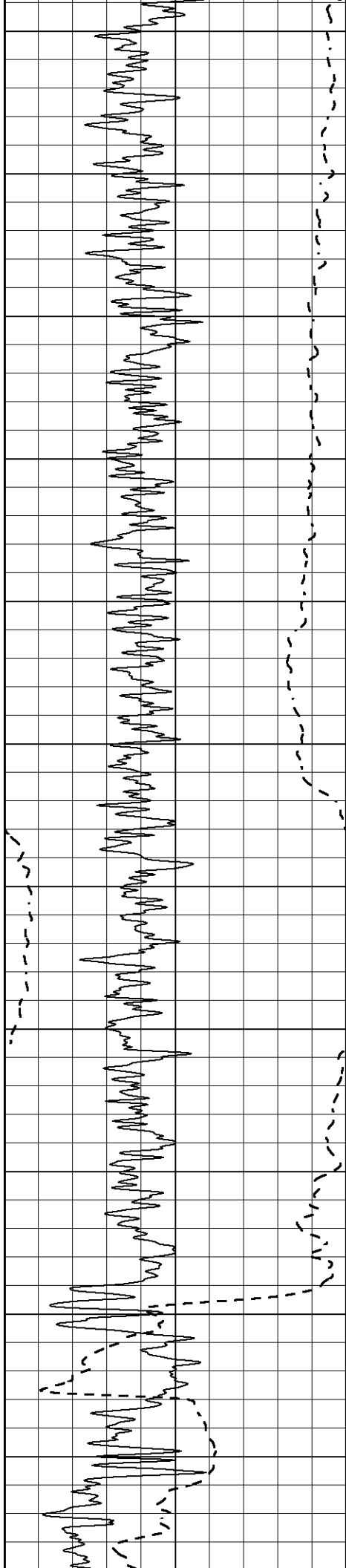
MAIN SECTION

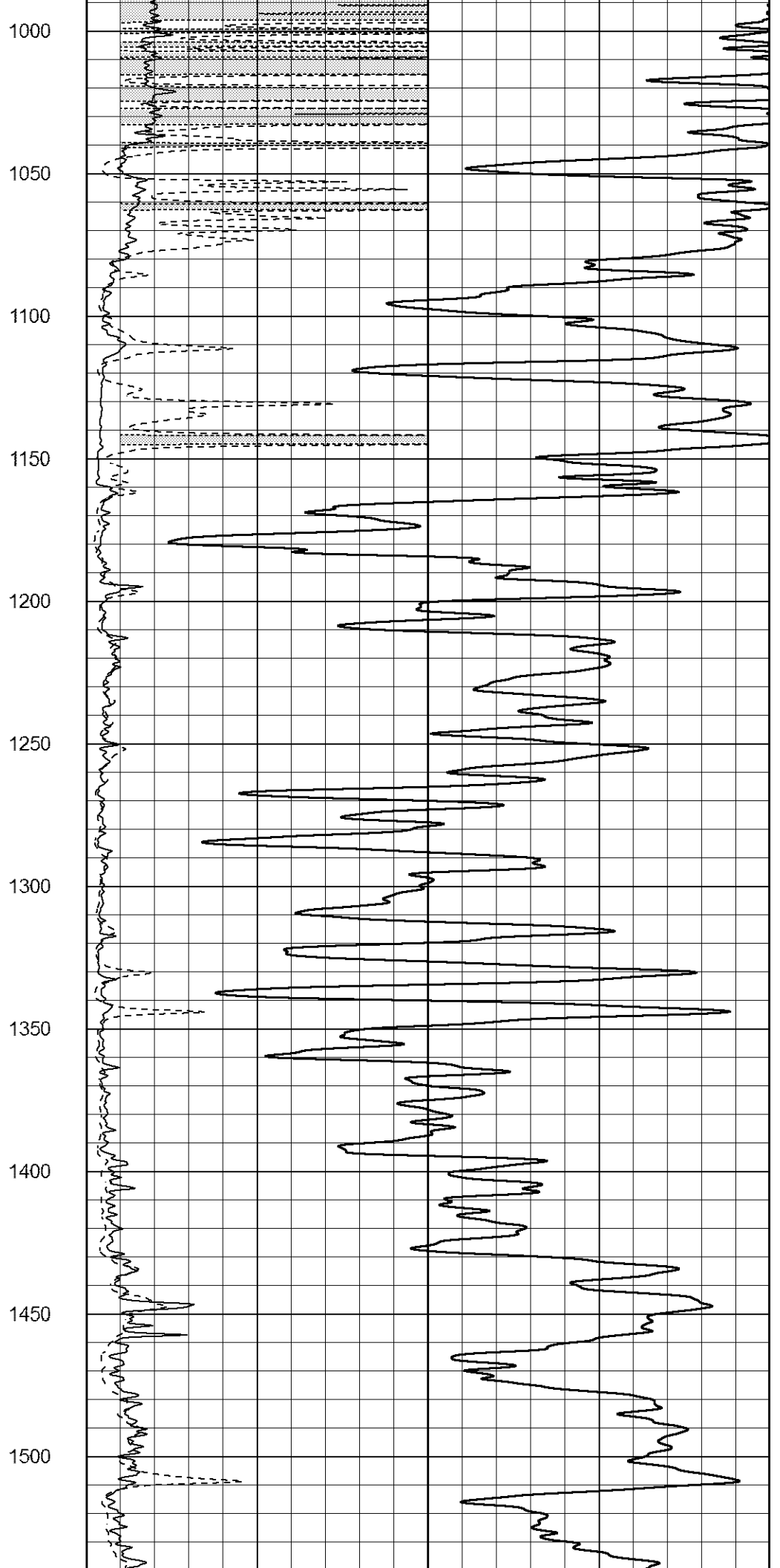
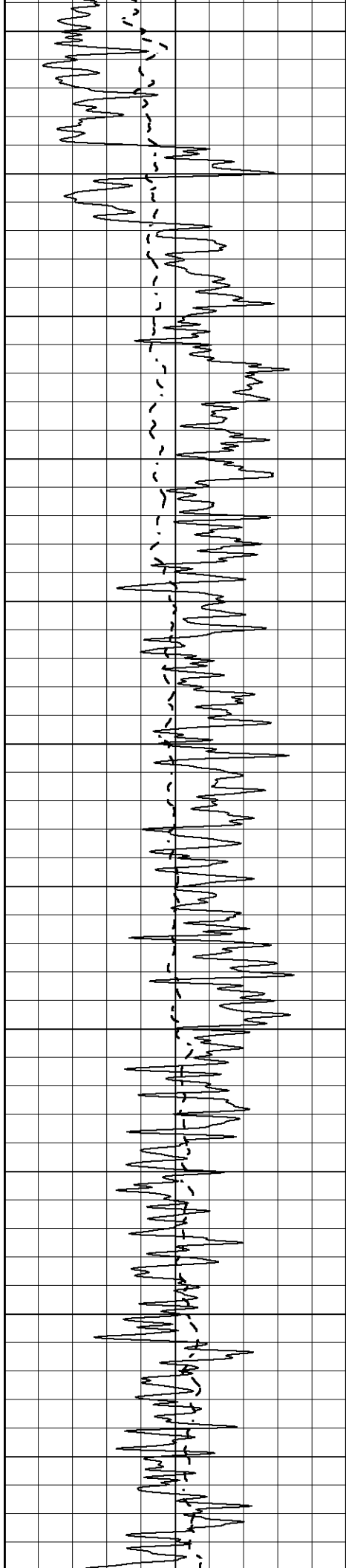
Database File 7781pe.db
 Dataset Pathname pass3M
 Presentation Format _dil2
 Dataset Creation Fri Oct 13 01:19:47 2023
 Charted by Depth in Feet scaled 1:600

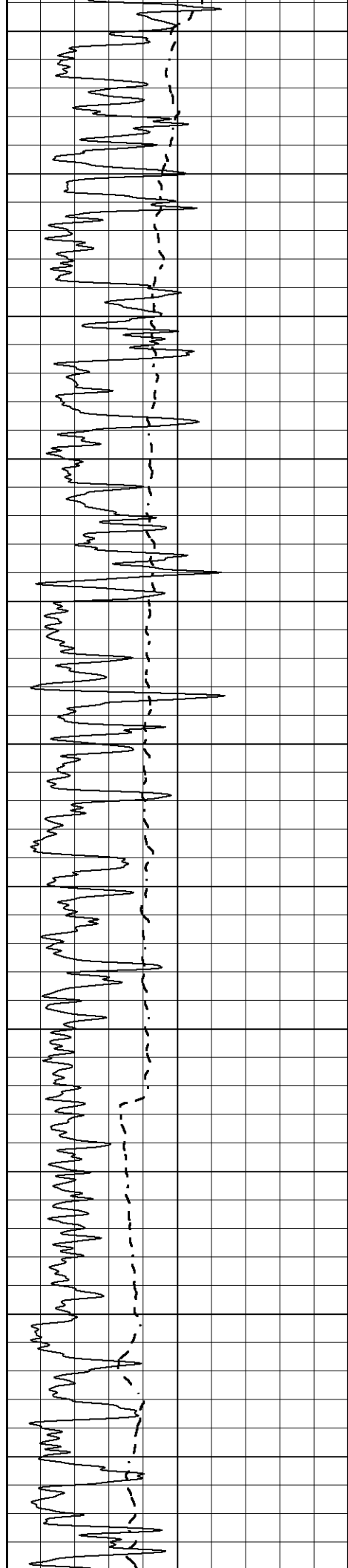
0 Gamma Ray (GAPI) 150
 -100 SP (mV) 100

1000 CILD (mmho/m) 0
 0 RLL3 (Ohm-m) 50
 0 Deep Induction (Ohm-m) 50
 50 RILD X10 (Ohm-m) 500
 50 RLL3 X10 (Ohm-m) 500

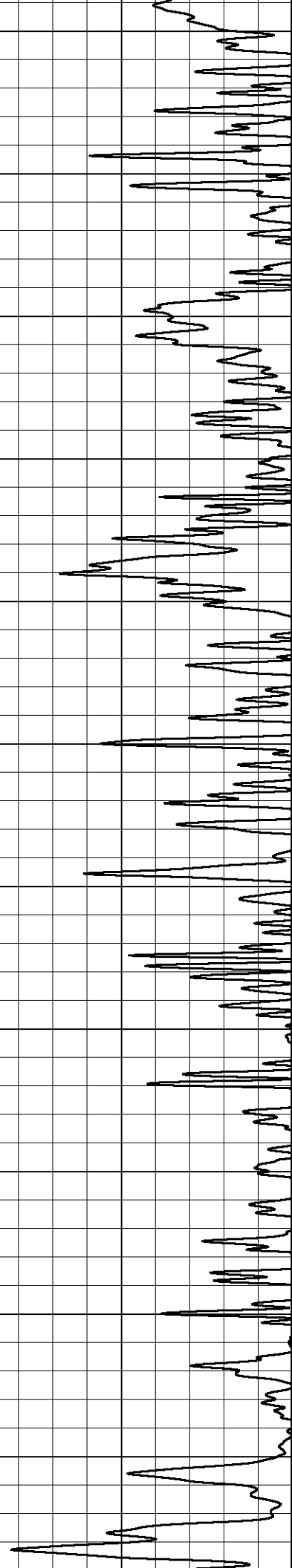
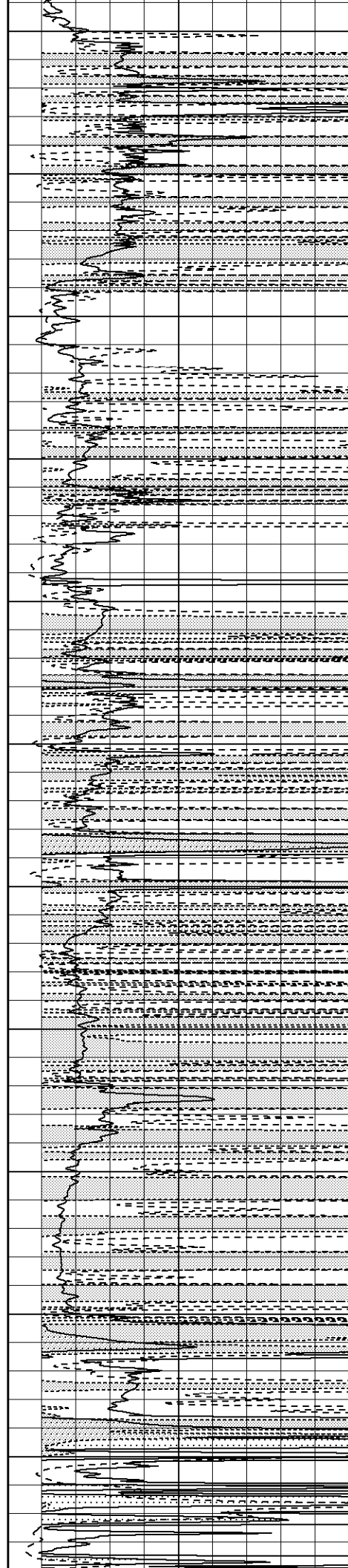


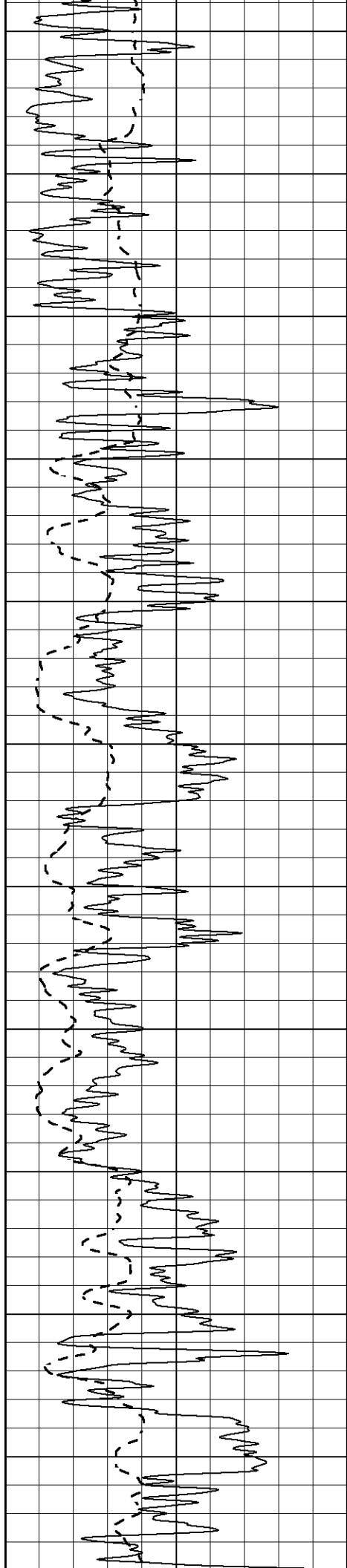






1550
1600
1650
1700
1750
1800
1850
1900
1950
2000
2050





2100

2150

2200

2250

2300

2350

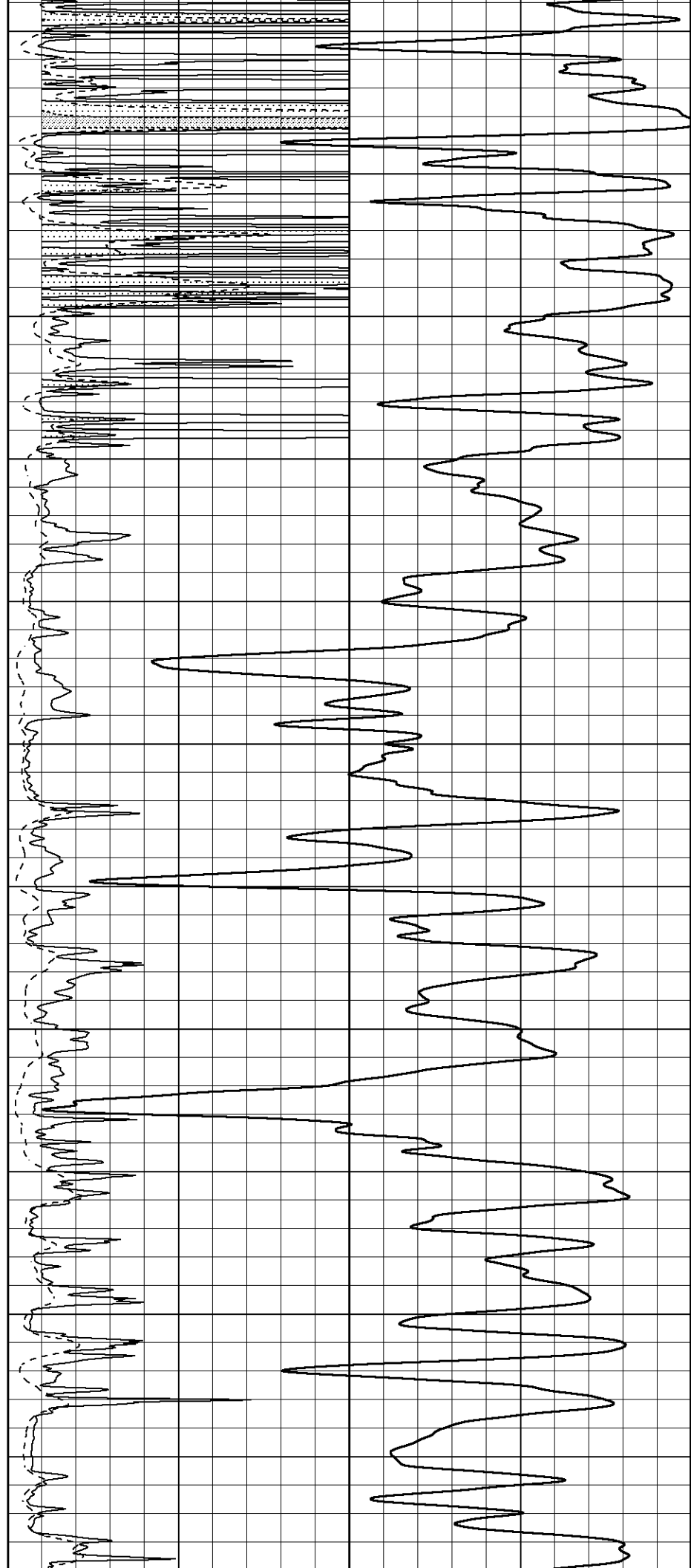
2400

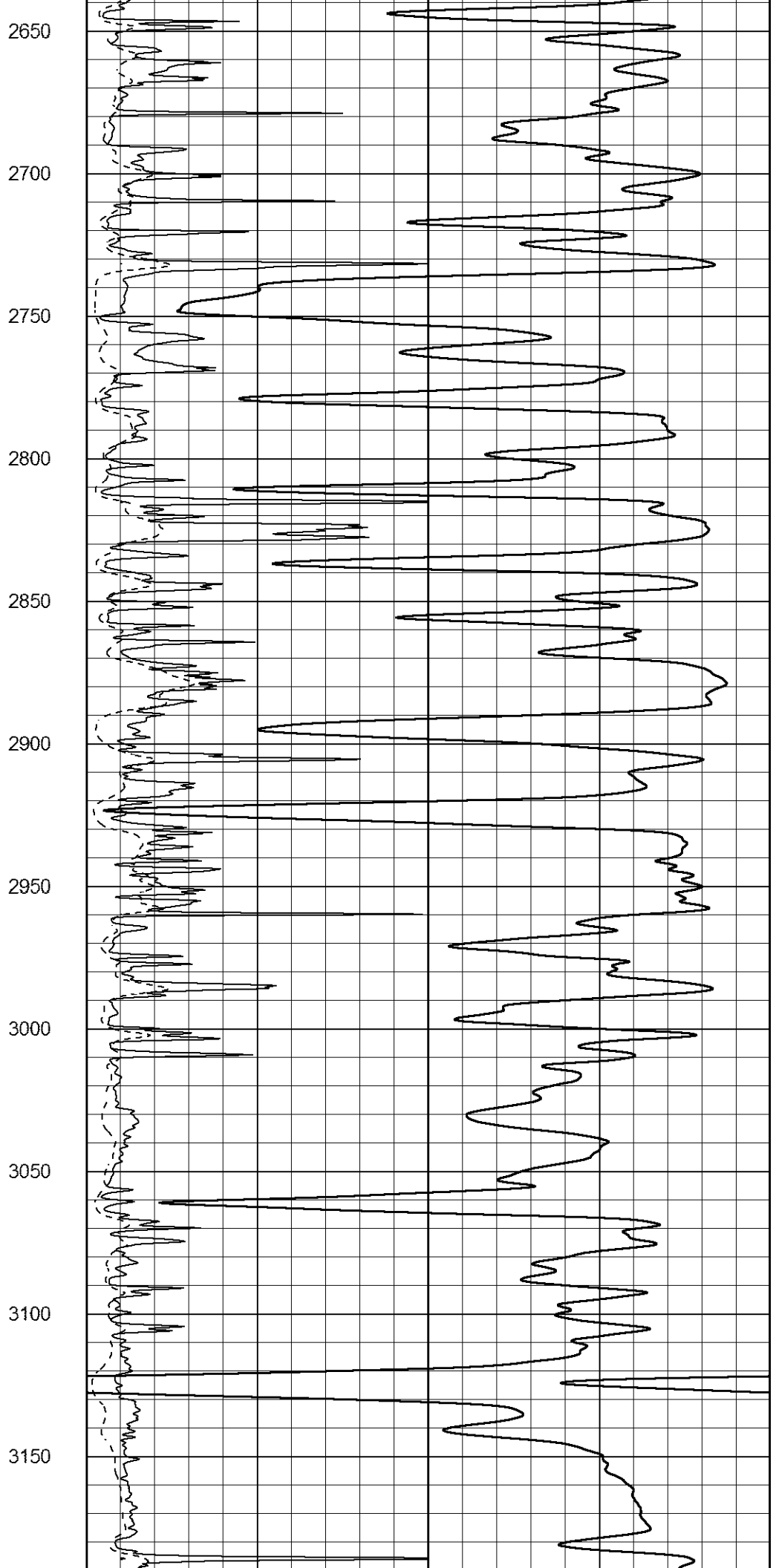
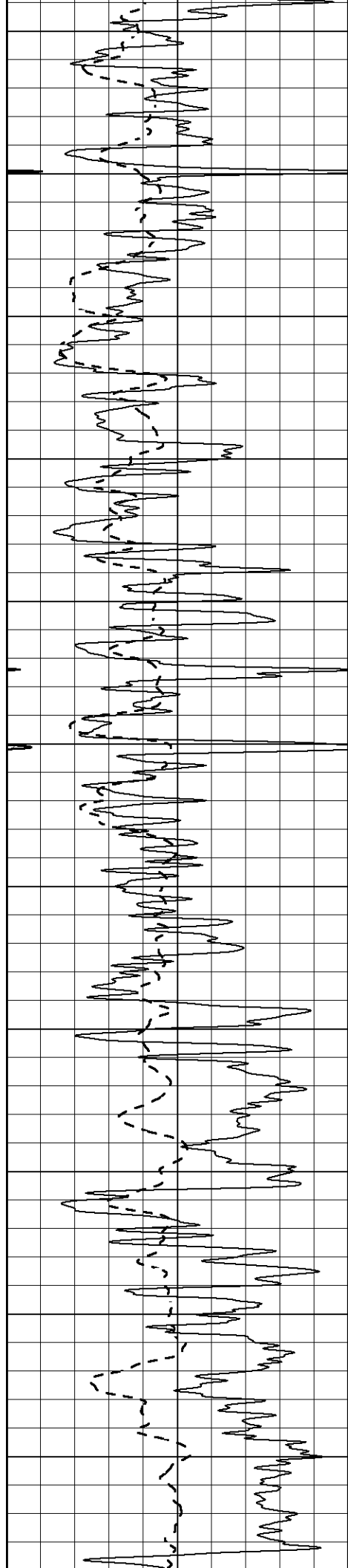
2450

2500

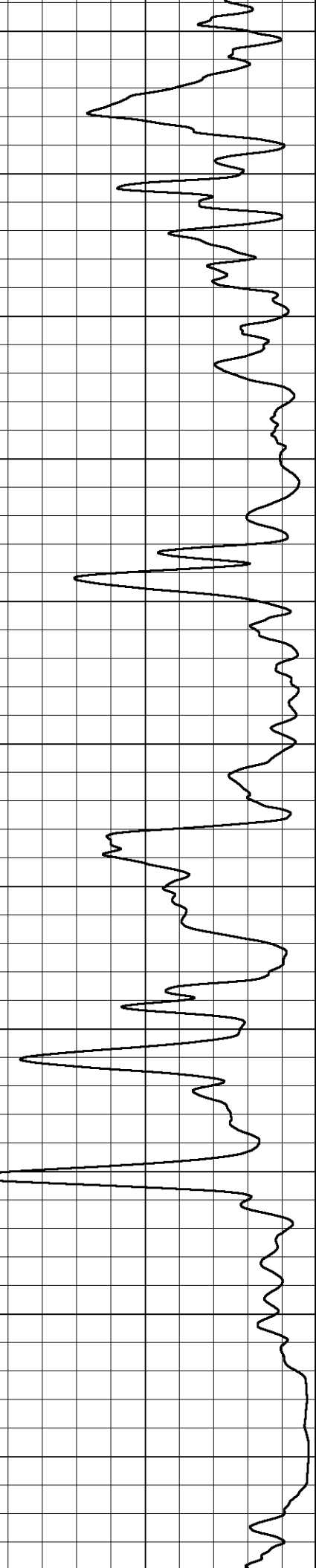
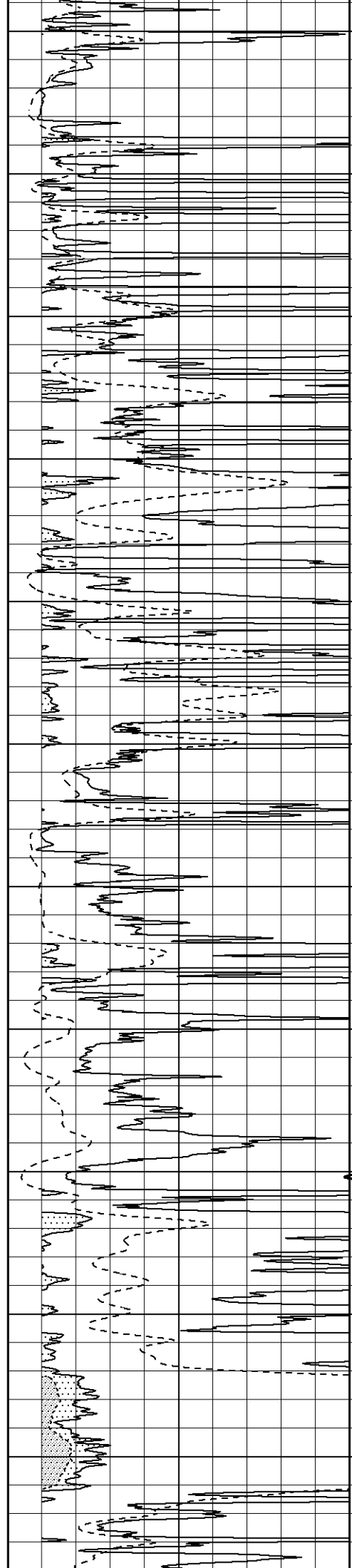
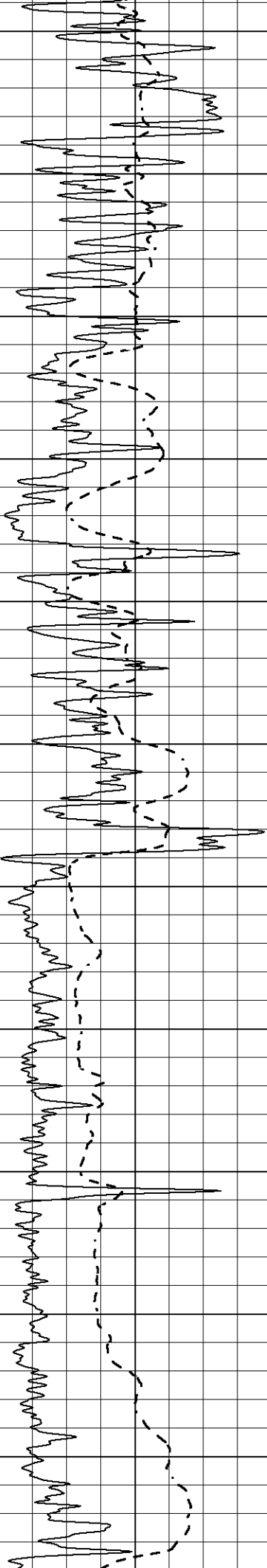
2550

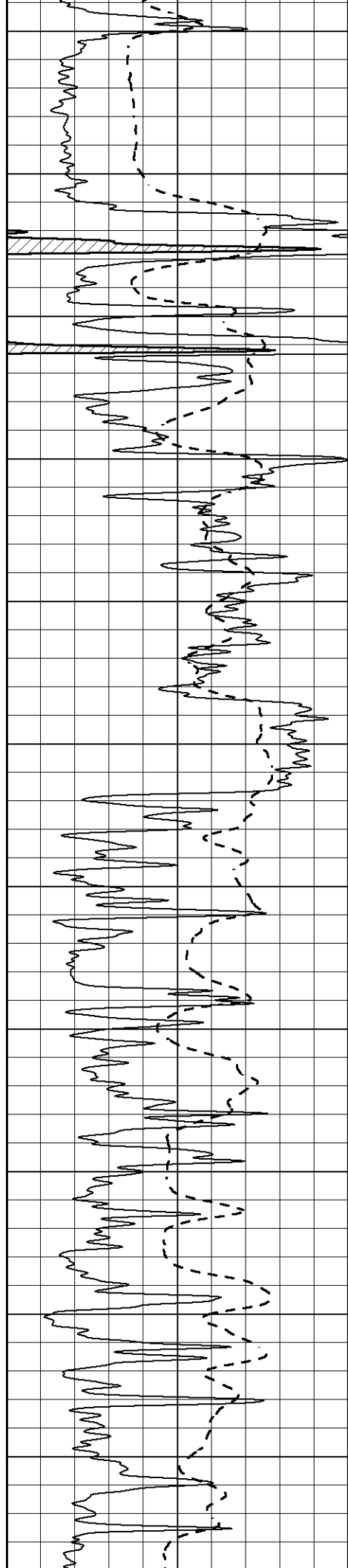
2600



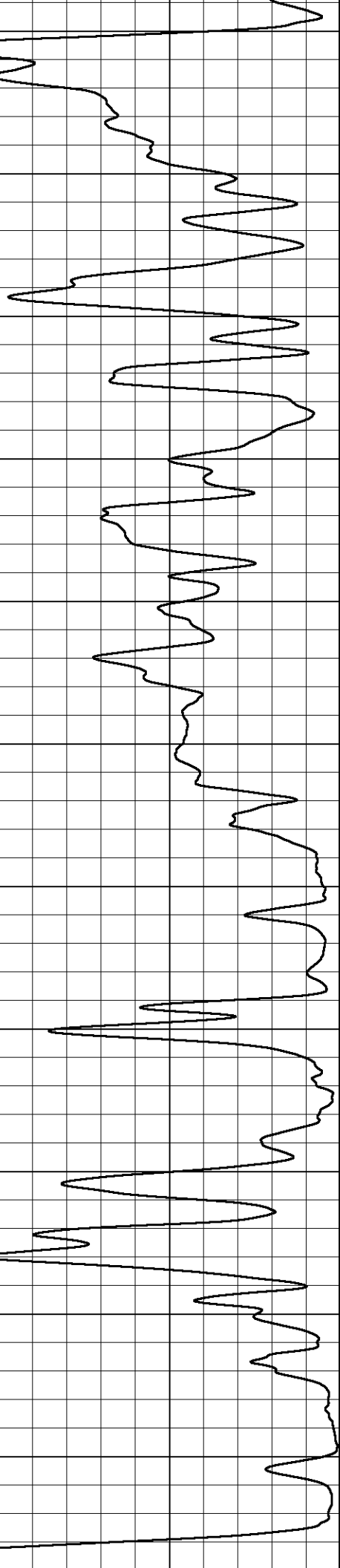
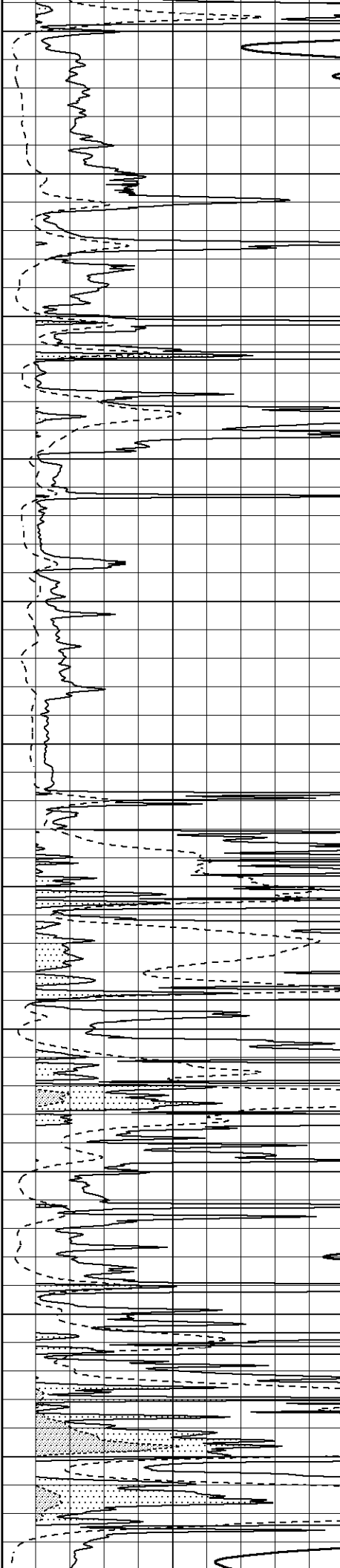


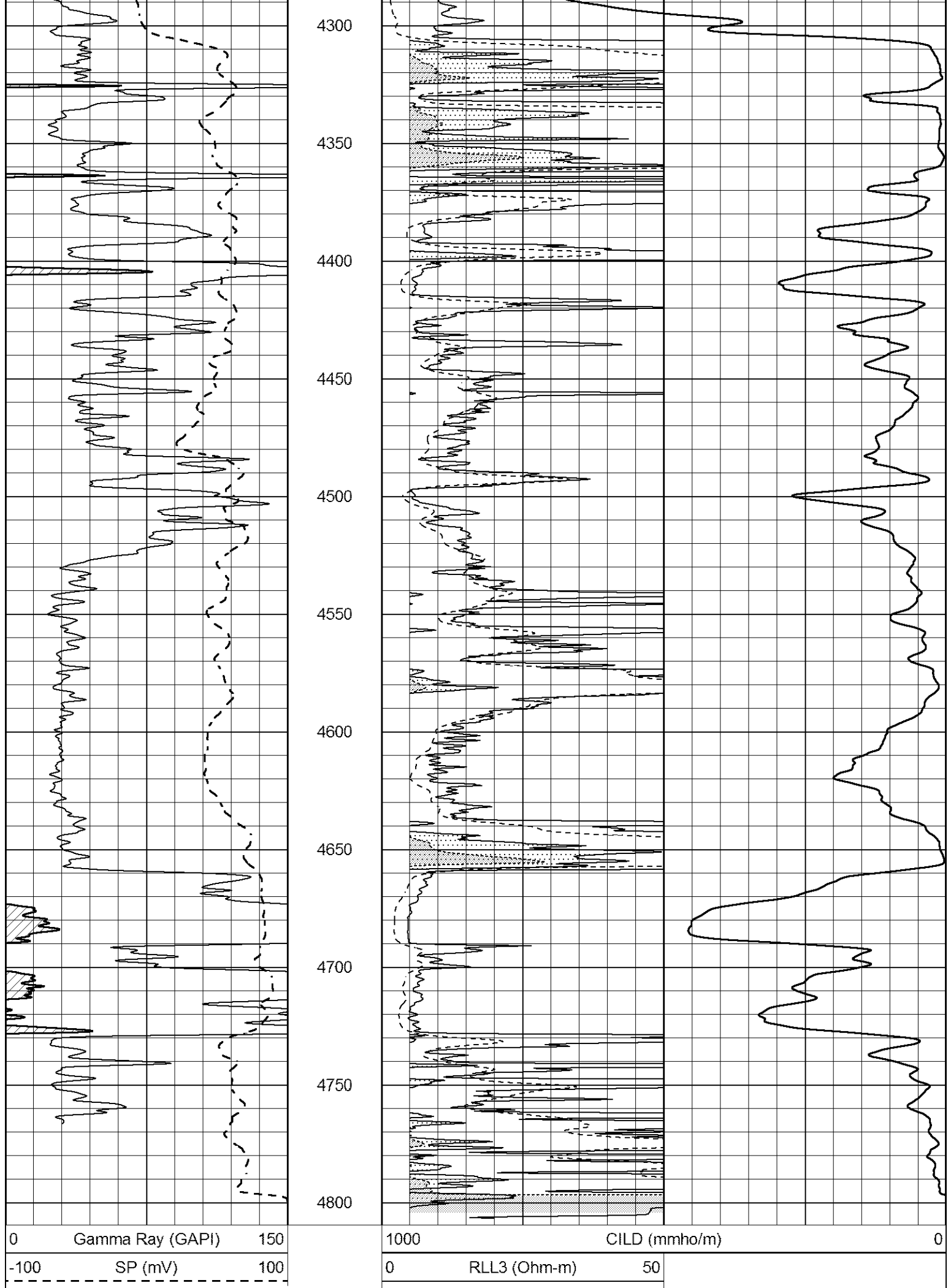
3200
3250
3300
3350
3400
3450
3500
3550
3600
3650
3700



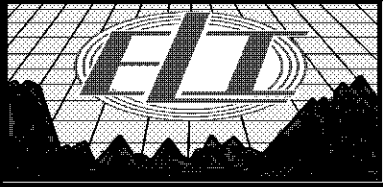


3750
3800
3850
3900
3950
4000
4050
4100
4150
4200
4250





0	Deep Induction (Ohm-m)	50
50	RILD X10 (Ohm-m)	500
50	RLL3 X10 (Ohm-m)	500

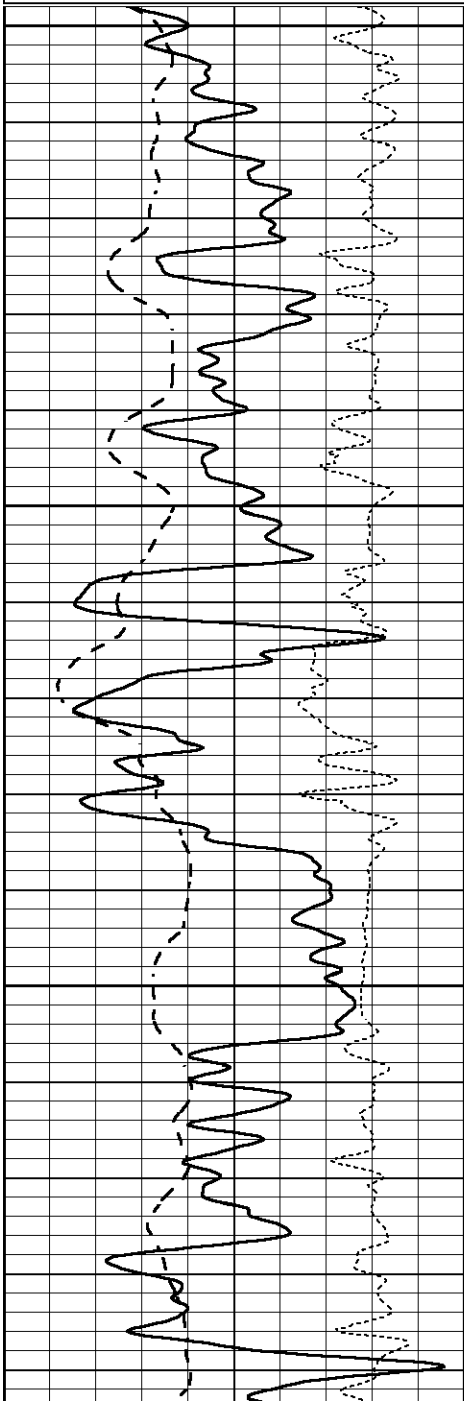


MAIN SECTION

Database File 7781pe.db
 Dataset Pathname pass3D
 Presentation Format _dil
 Dataset Creation Fri Oct 13 00:35:13 2023
 Charted by Depth in Feet scaled 1:240

0	GAMMA RAY (GAPI)	150
-100	SP (mV)	100
-250	Rxo/Rt	50

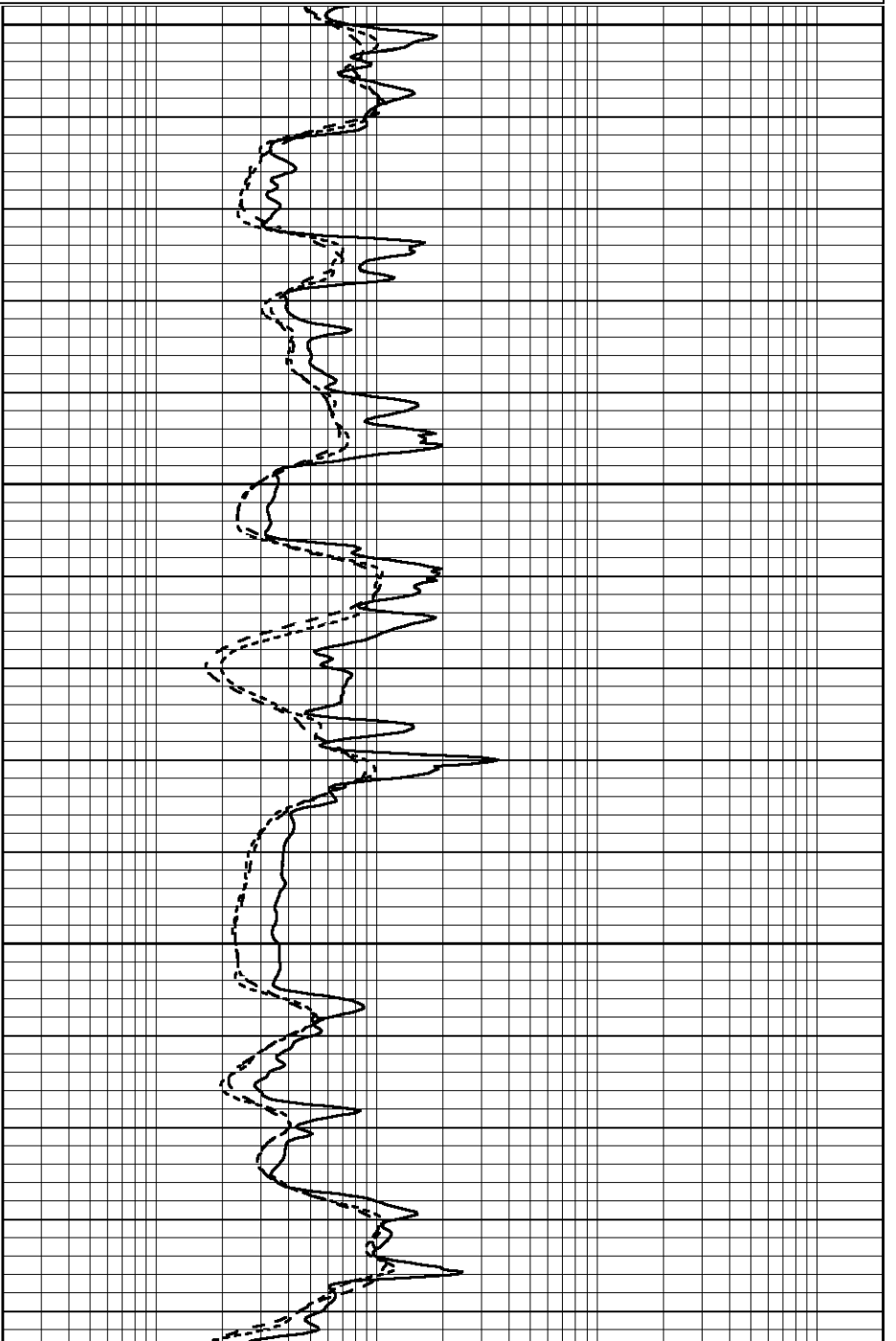
0.2	SHALLOW GUARD (Ohm-m)	2000
0.2	MEDIUM INDUCTION (Ohm-m)	2000
0.2	DEEP INDUCTION (Ohm-m)	2000

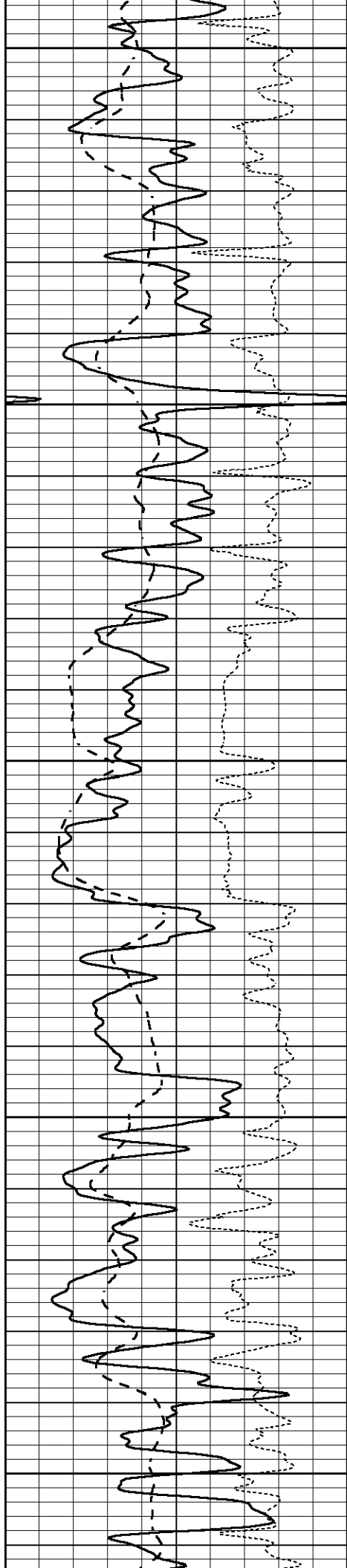


2500

2550

2600





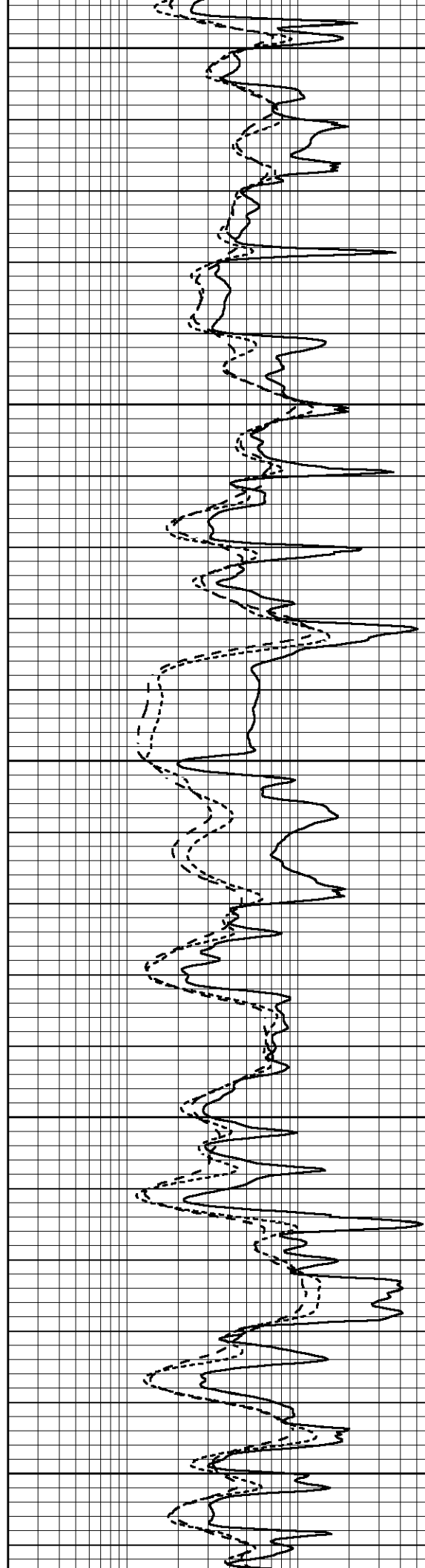
2650

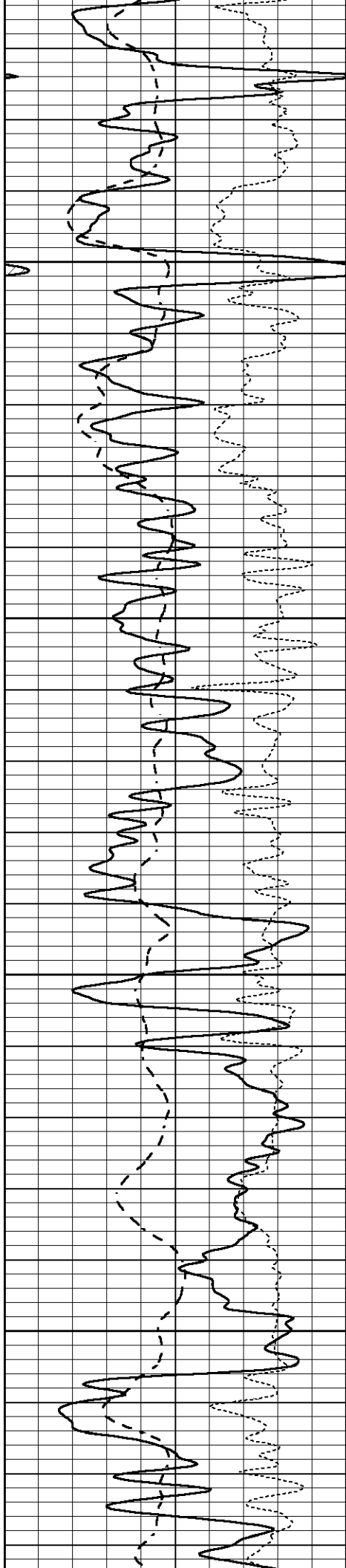
2700

2750

2800

2850



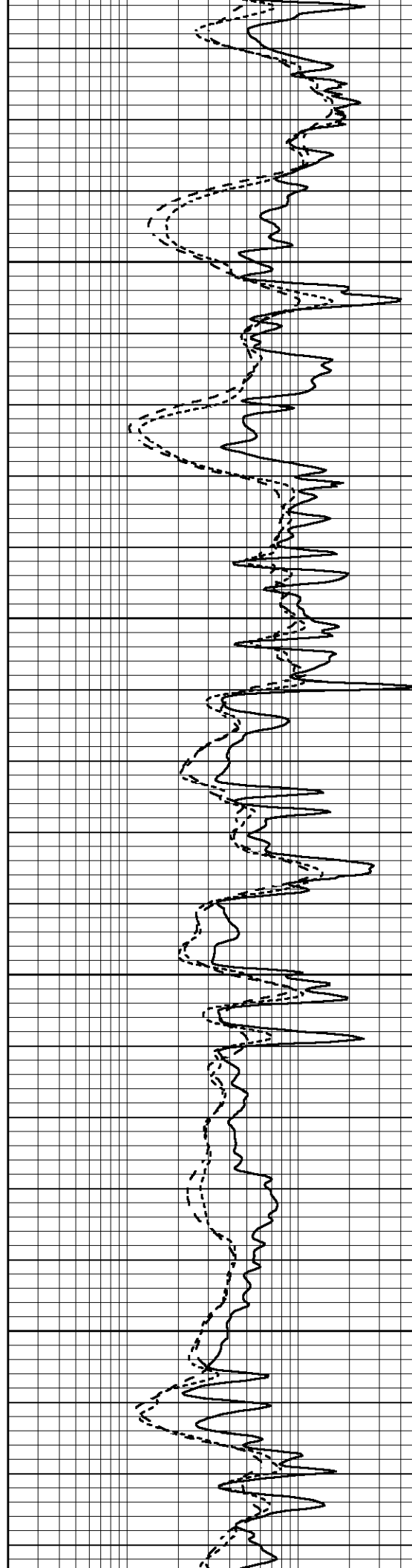


2900

2950

3000

3050



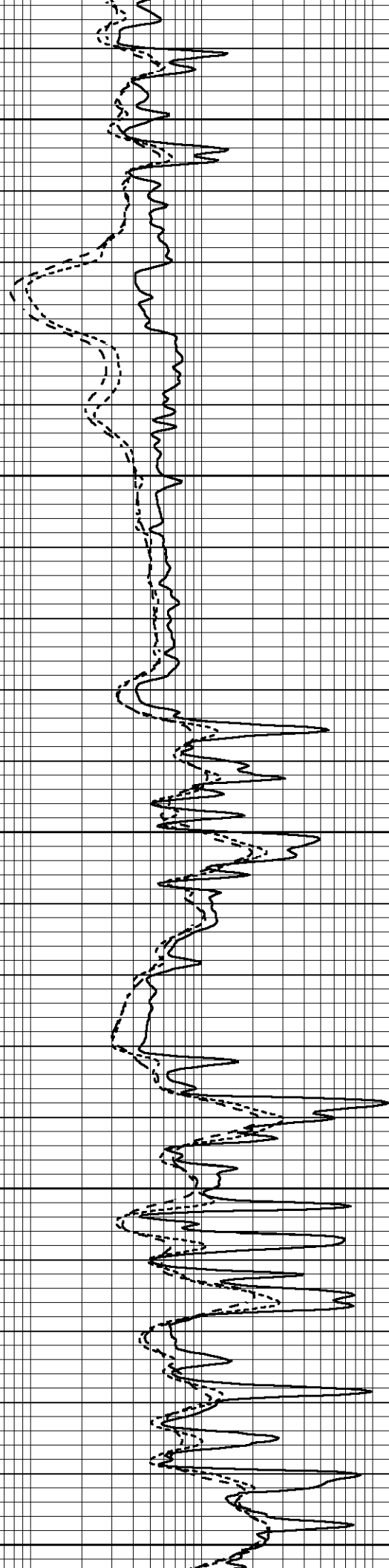
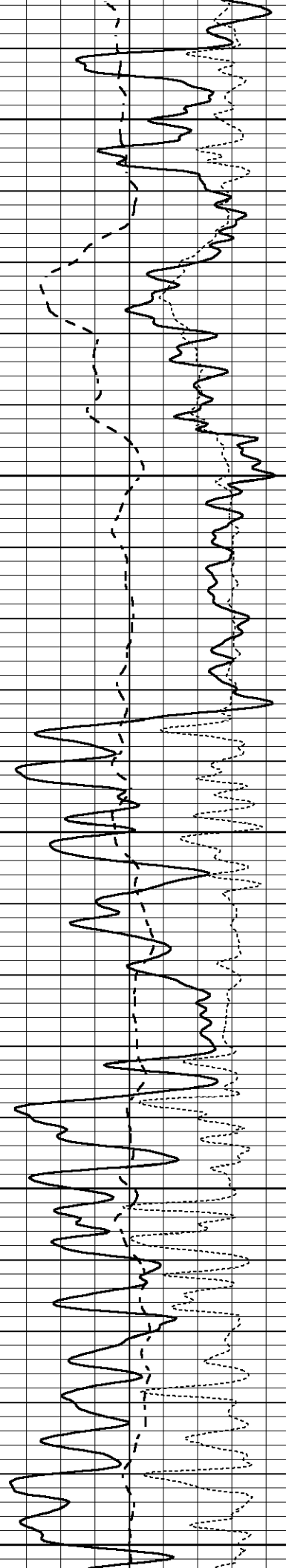
3100

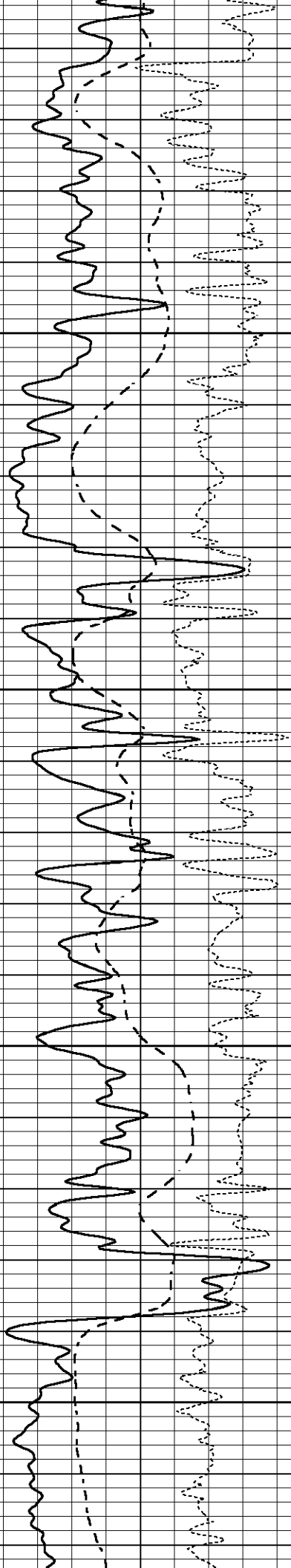
3150

3200

3250

3300



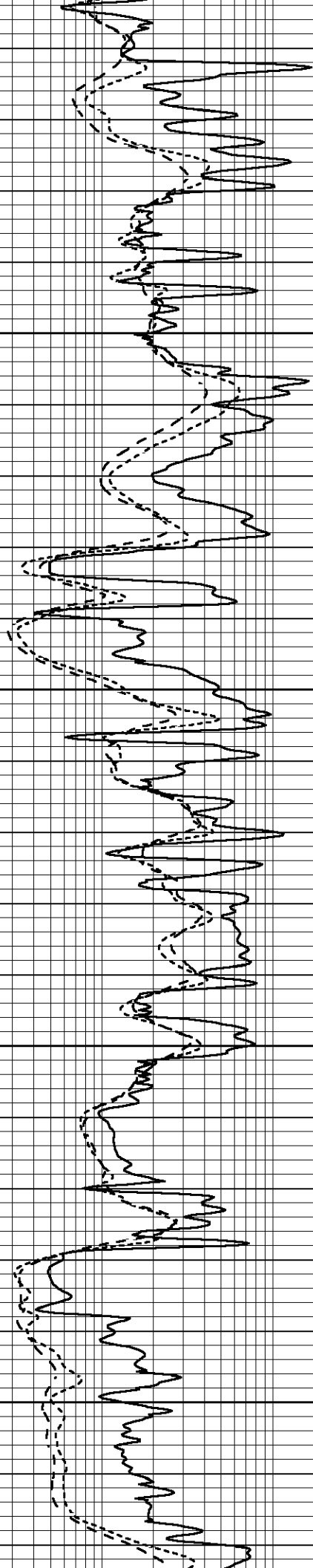


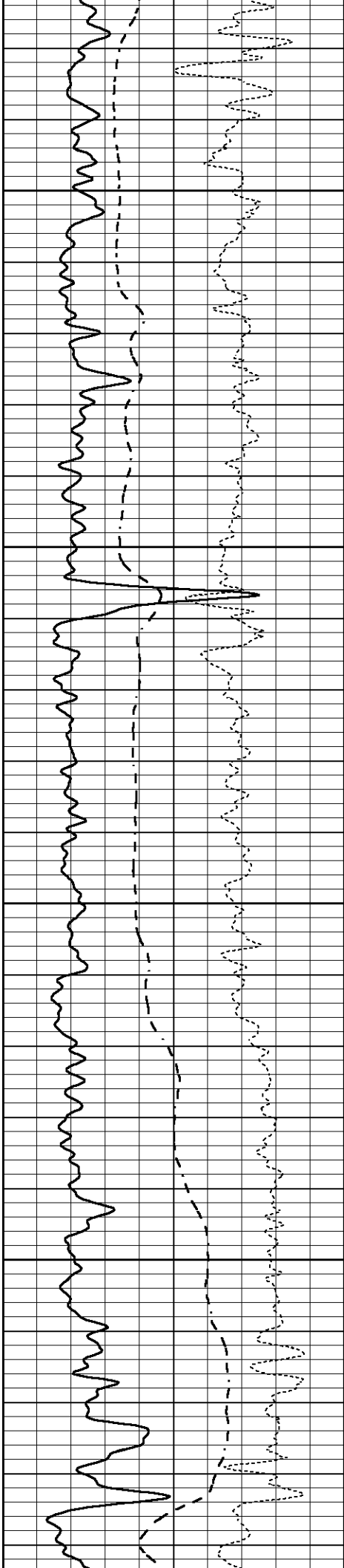
3350

3400

3450

3500



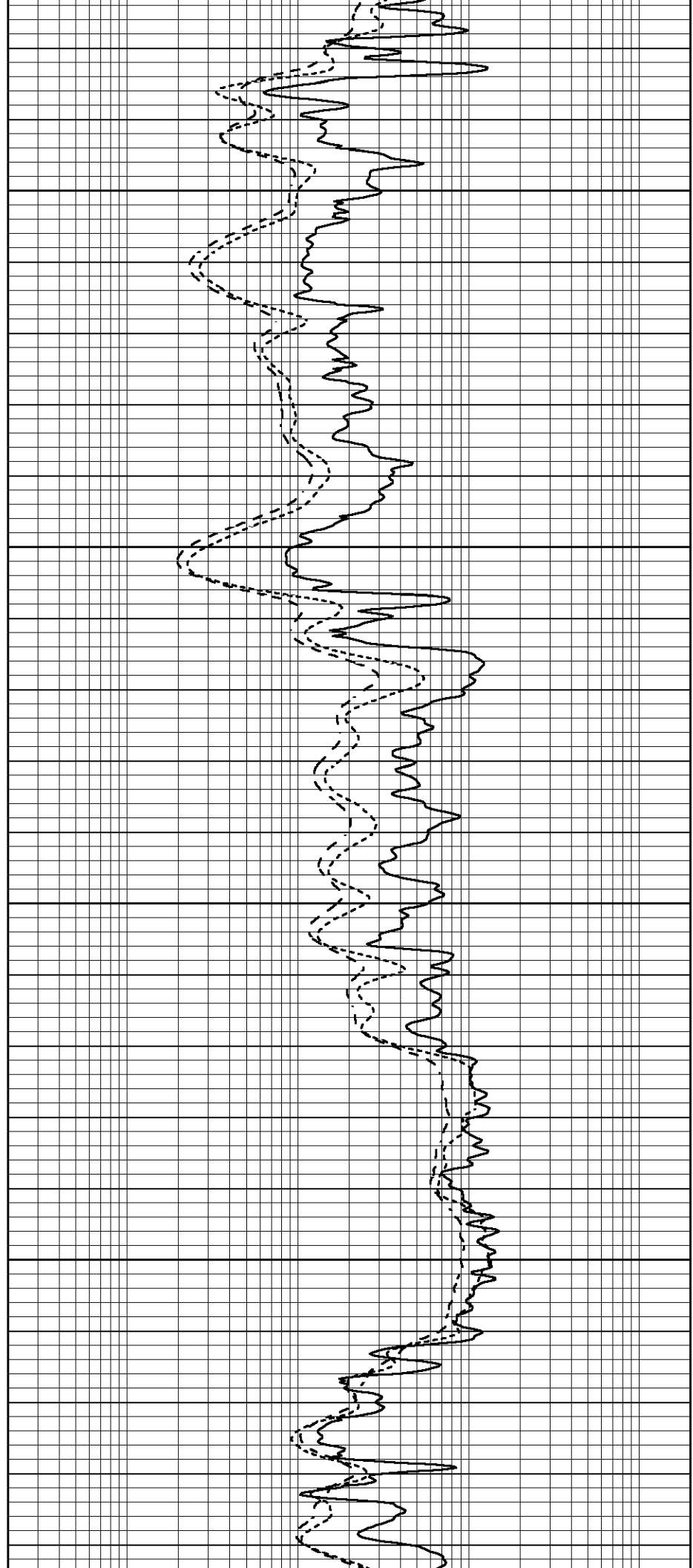


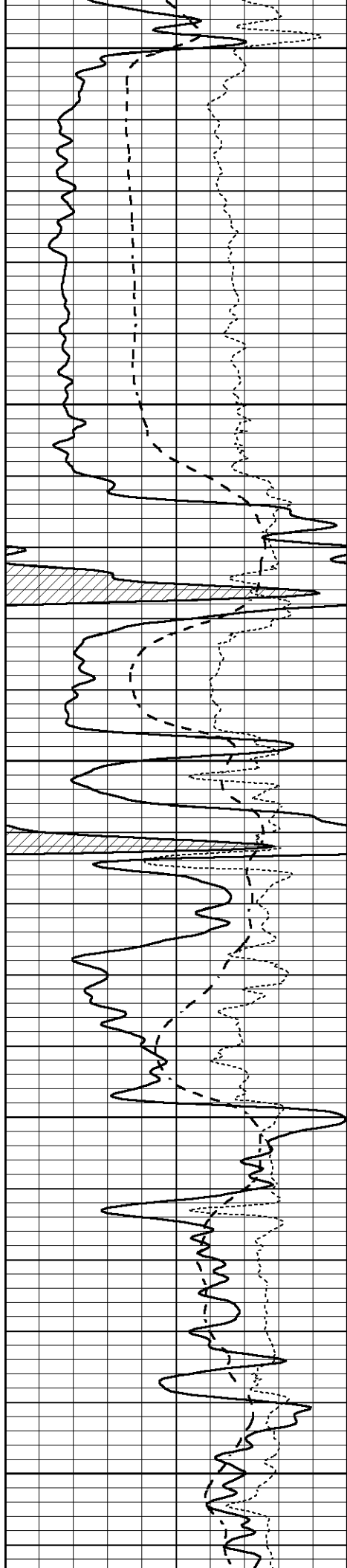
3550

3600

3650

3700





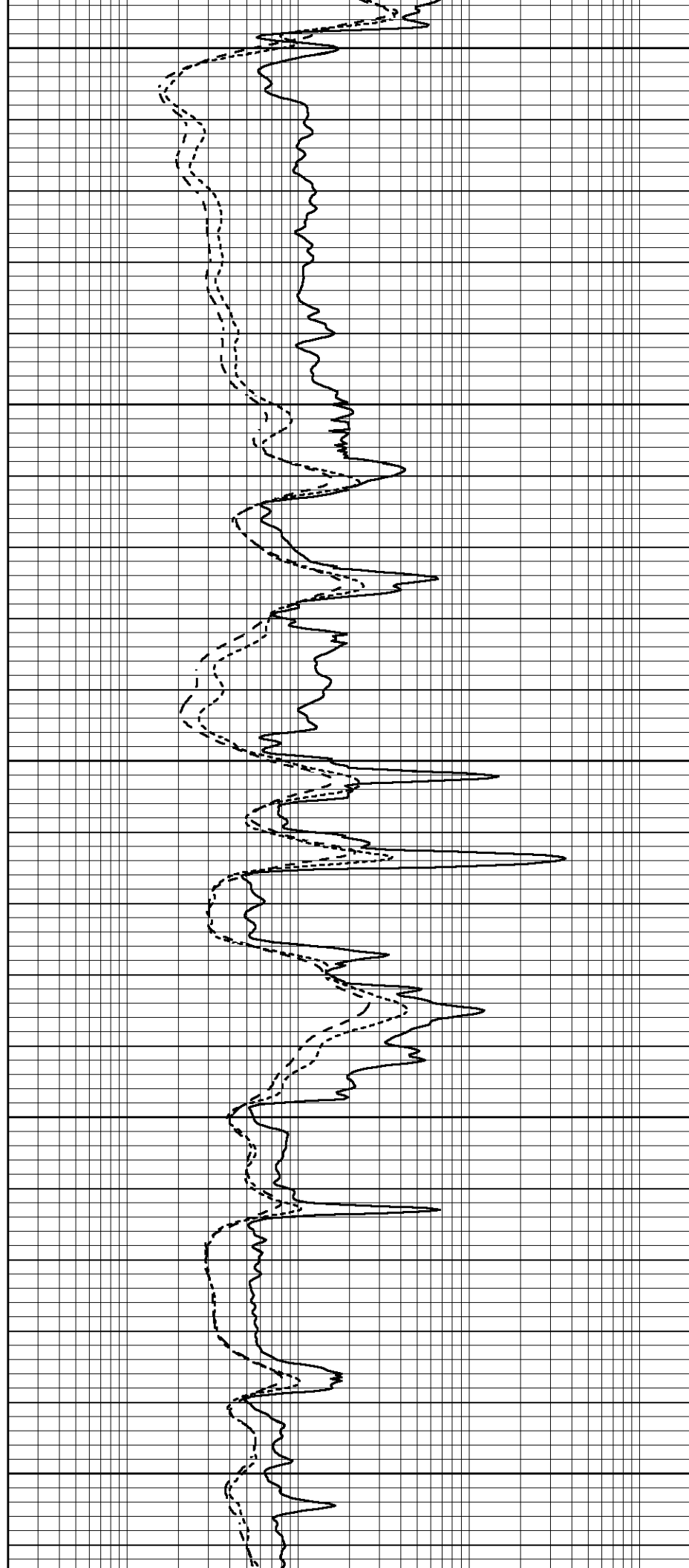
3750

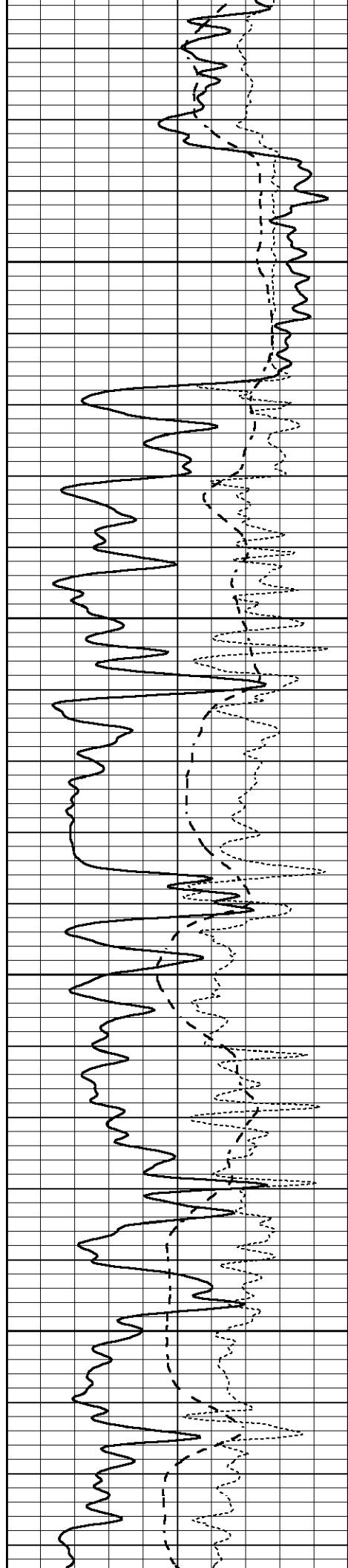
3800

3850

3900

3950



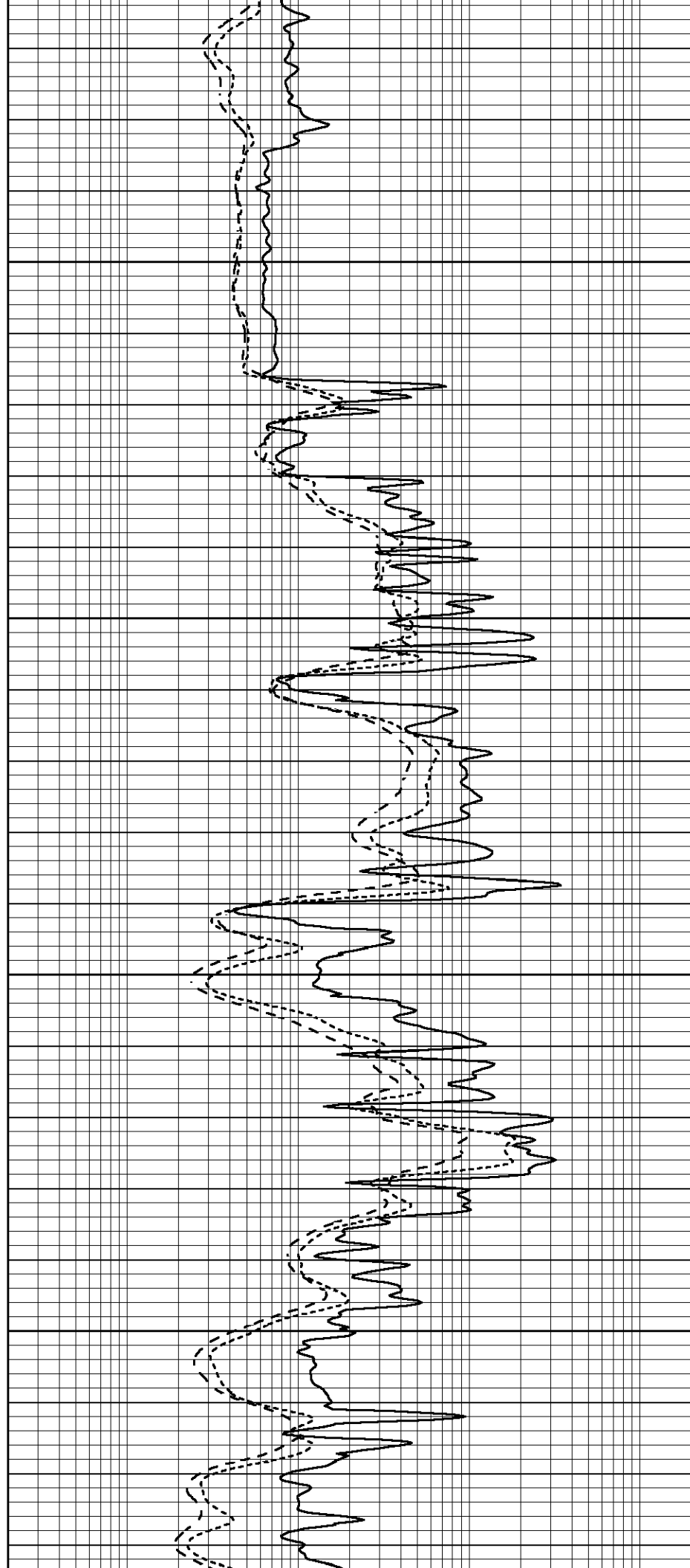


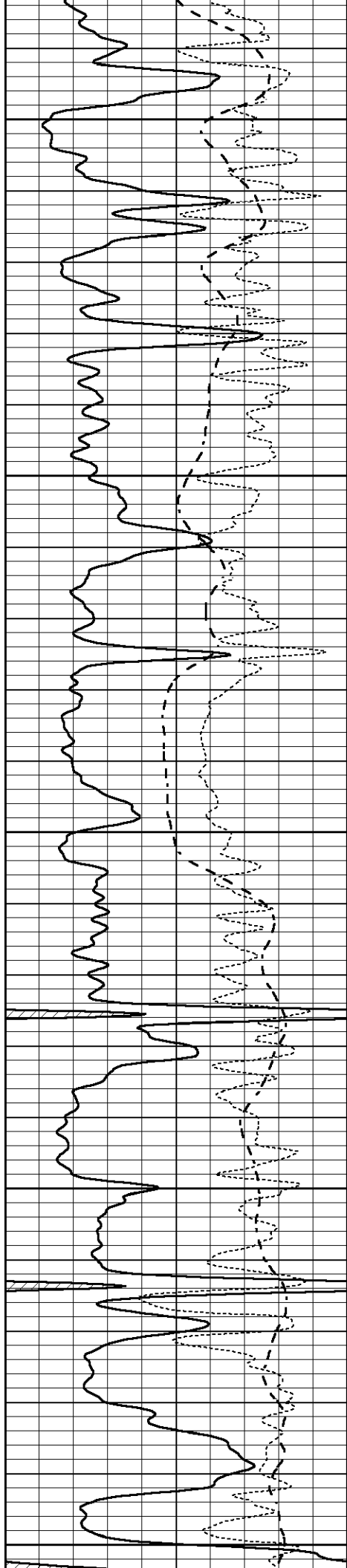
4000

4050

4100

4150





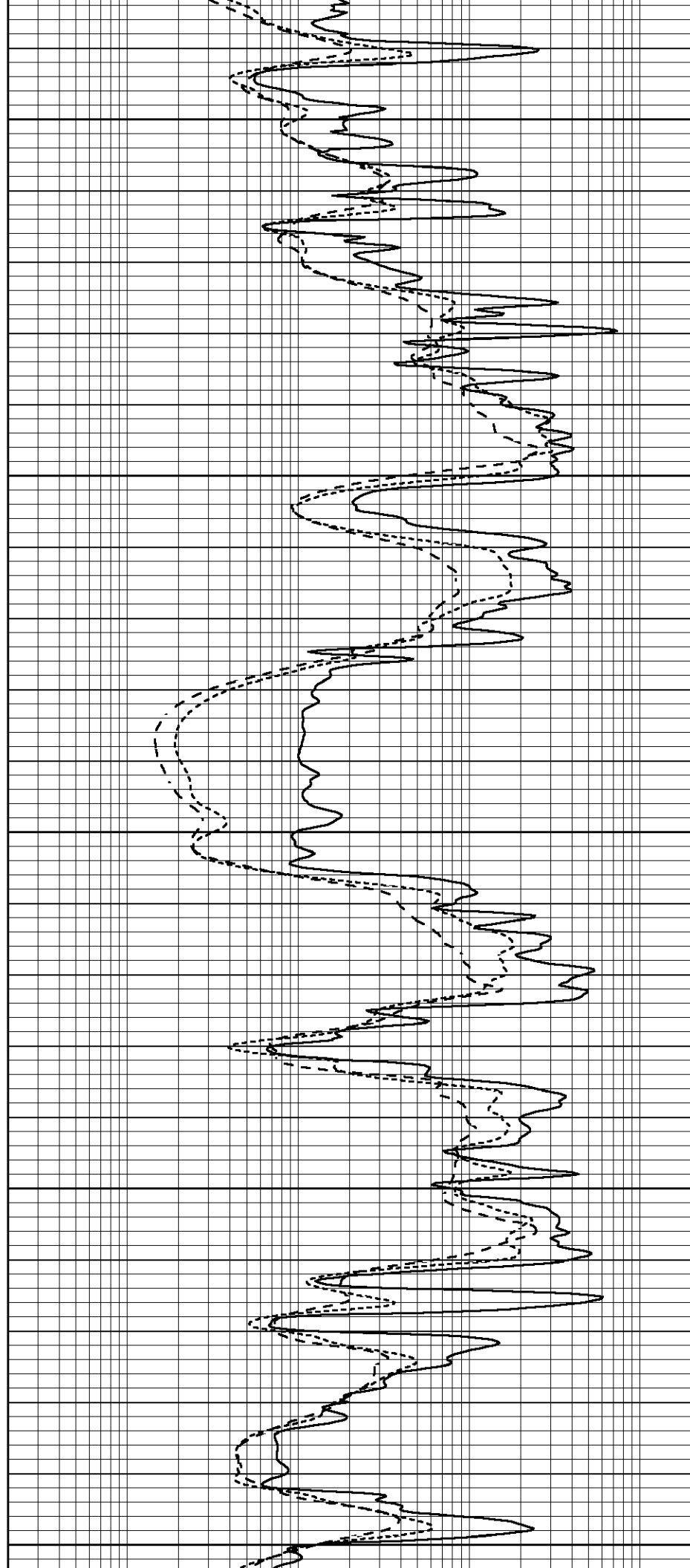
4200

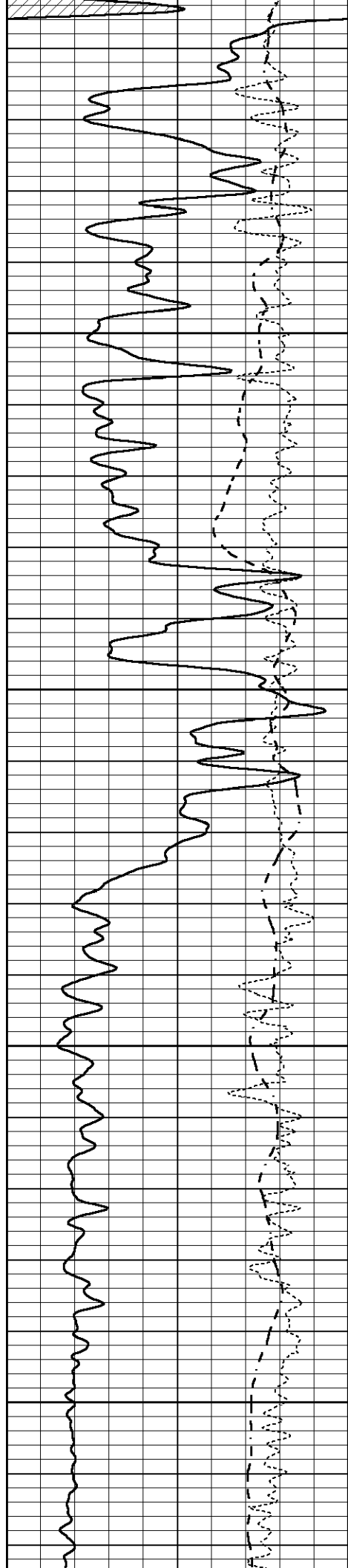
4250

4300

4350

4400



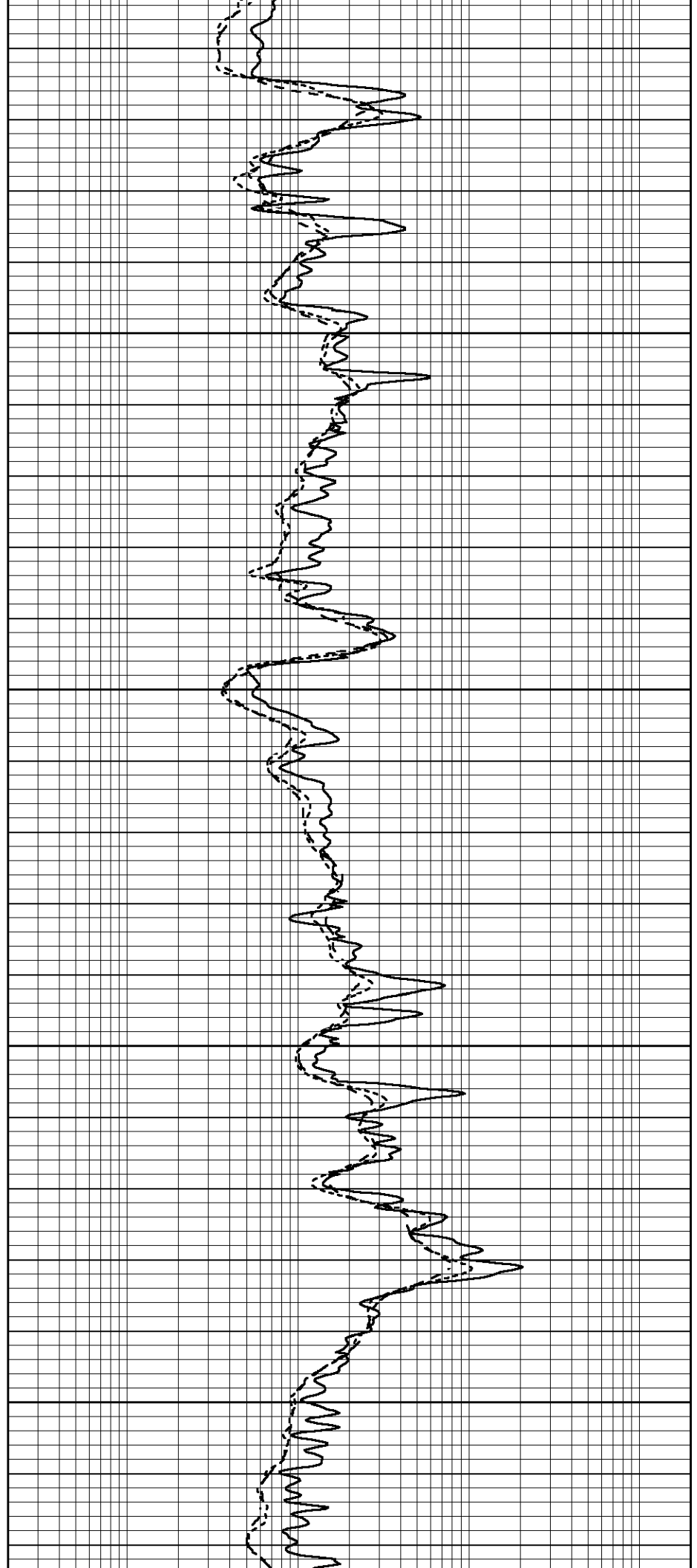


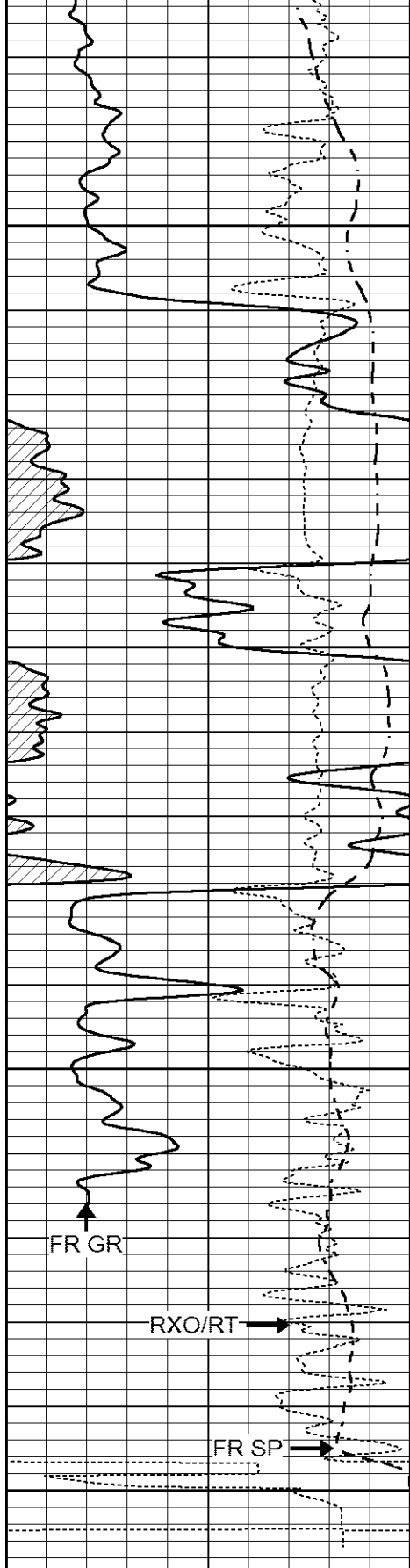
4450

4500

4550

4600





4650

4700

4750

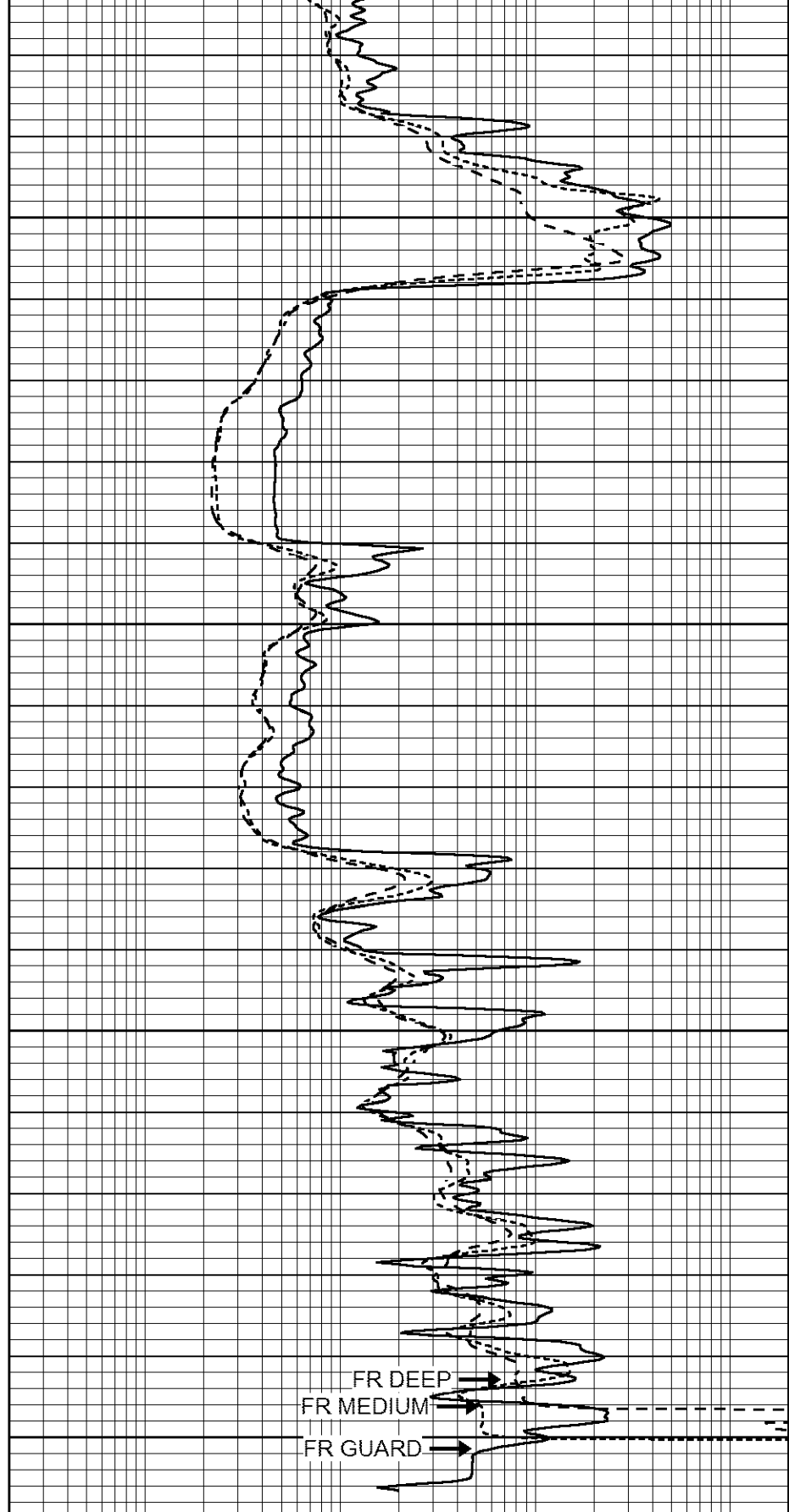
FR GR

RXO/RT

FR SP

4800
LTD 4803

0	GAMMA RAY (GAPI)	150
-100	SP (mV)	100
-250	Rxo/Rt	50



FR DEEP

FR MEDIUM

FR GUARD

0.2	SHALLOW GUARD (Ohm-m)	2000
0.2	MEDIUM INDUCTION (Ohm-m)	2000
0.2	DEEP INDUCTION (Ohm-m)	2000

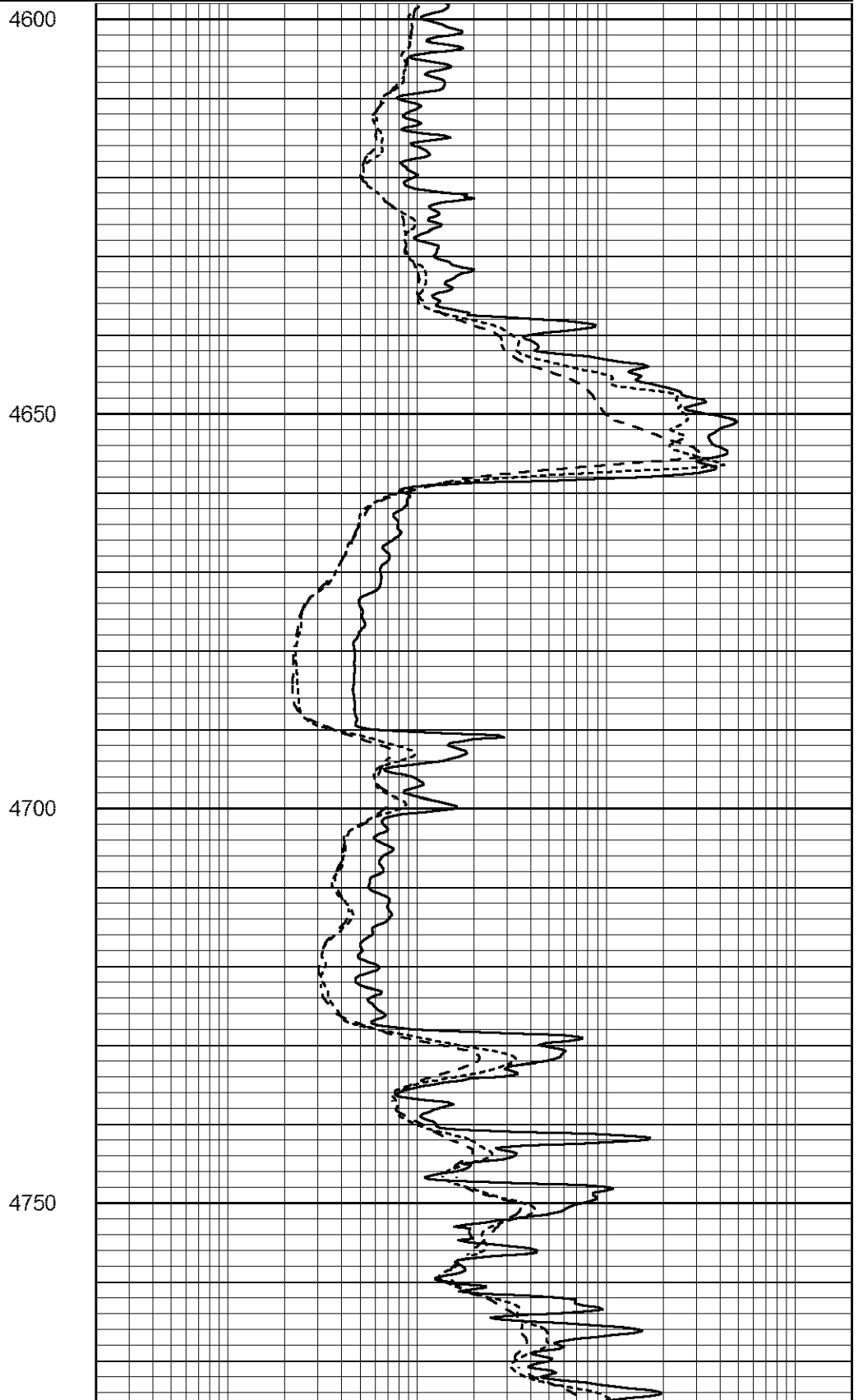
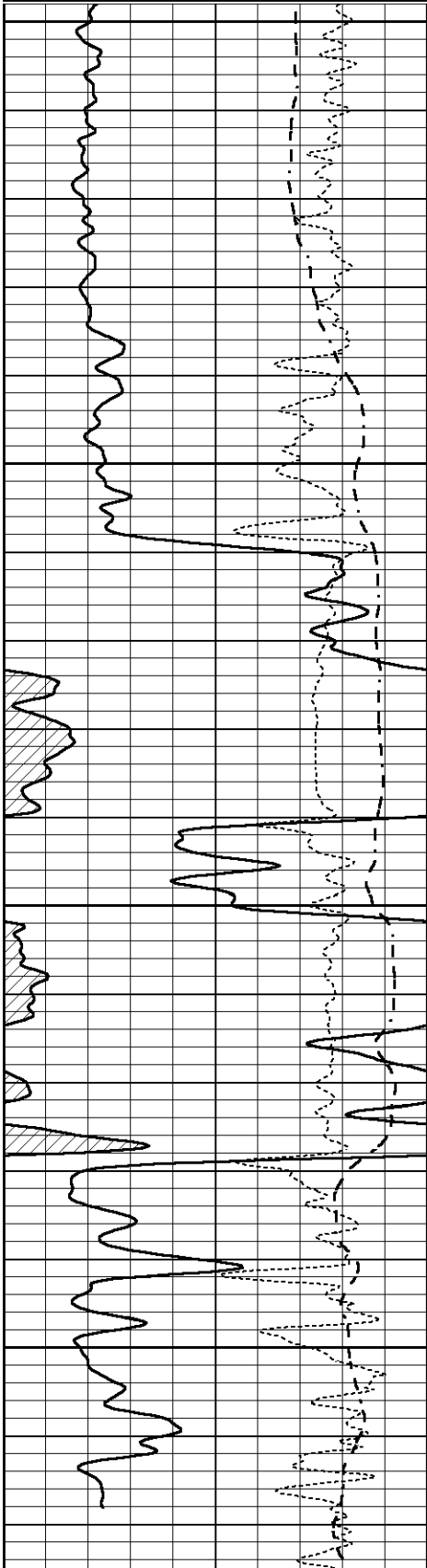


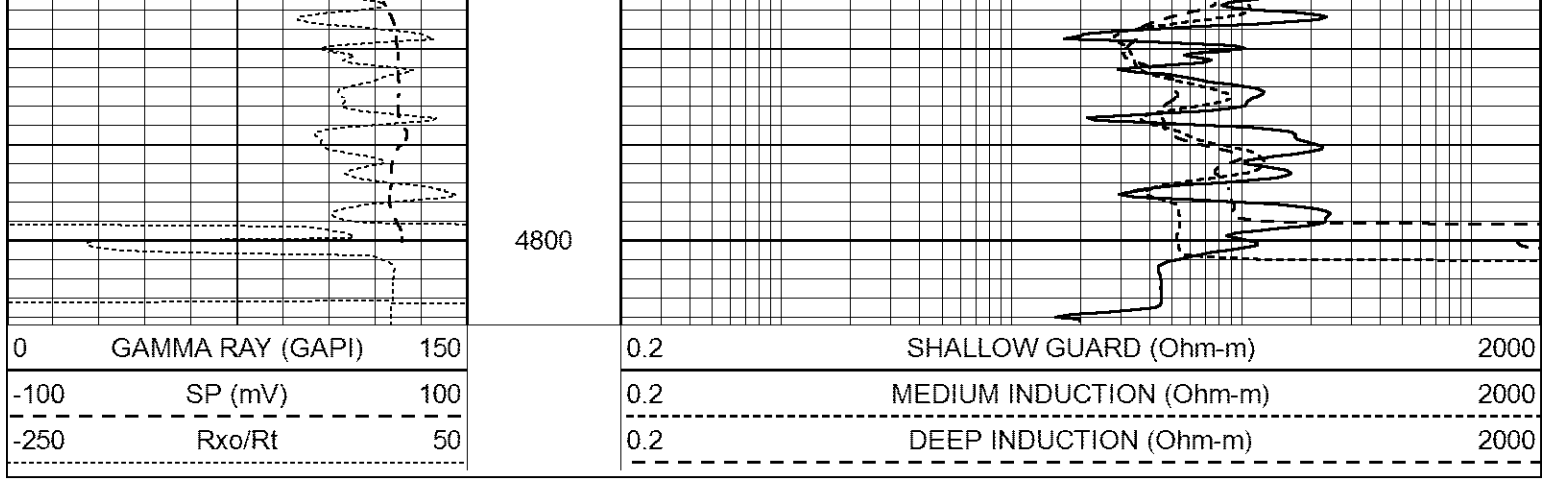
REPEAT SECTION

Database File 7781pe.db
 Dataset Pathname pass2DILR
 Presentation Format _dil
 Dataset Creation Fri Oct 13 00:13:16 2023
 Charted by Depth in Feet scaled 1:240

0	GAMMA RAY (GAPI)	150
-100	SP (mV)	100
-250	Rxo/Rt	50

0.2	SHALLOW GUARD (Ohm-m)	2000
0.2	MEDIUM INDUCTION (Ohm-m)	2000
0.2	DEEP INDUCTION (Ohm-m)	2000





Calibration Report

Database File 7781pe.db
 Dataset Pathname pass3M
 Dataset Creation Fri Oct 13 01:19:47 2023

Dual Induction Calibration Report

Serial-Model: FW1410-55-Probe
 Surface Cal Performed: Sat Jul 29 01:57:42 2023
 Downhole Cal Performed: Tue Feb 19 11:44:24 2019
 After Survey Verification Performed: Tue Feb 19 11:44:27 2019

Surface Calibration

Loop:	Readings				References			Results	
	Air	Loop			Air	Loop		m	b
Deep	0.011	0.656	V	1.000	400.000	mmho/m	565.000	-7.000	
Medium	-0.000	0.731	V	1.000	464.000	mmho/m	530.000	-12.000	
Internal:	Zero				Cal			m	b
Deep	0.007	0.649	V	0.000	400.000	mmho/m	623.784	-4.595	
Medium	0.004	0.743	V	0.000	464.000	mmho/m	627.284	-2.251	

Downhole Calibration

	Readings				References			Results	
	Zero	Cal			Zero	Cal		m'	b'
Deep	-0.824	395.917	mmho/m	-0.976	397.550	mmho/m	1.004	-0.149	
Medium	3.565	471.327	mmho/m	3.468	471.590	mmho/m	1.001	-0.099	
LL3		7.503	V		1500.000	Ohm-m			
		0.001	V		20.000	Ohm-m			
		-7.481	V		3745.000	mmho-m			

After Survey Verification

	Readings				Targets			Results	
	Zero	Cal			Zero	Cal		m'	b'
Deep	0.000	0.000	mmho/m	-0.824	395.917	mmho/m	1.000	0.000	
Medium	0.000	0.000	mmho/m	3.565	471.327	mmho/m	1.000	0.000	
LL3		0.000	Ohm-m		1500.000	Ohm-m			
		0.000	Ohm-m		20.000	Ohm-m			
		0.000	mmho-m		3745.000	mmho-m			

Litho Density Calibration Report

Serial: 140704
 Model: V4_10P
 Source Number: 74GBq-19

Master Calibration

Performed: Fri May 12 10:26:47 2023

	Background	Aluminum	Magnesium		
Window 1	521.46	5212.91	23528.37	cps	
Window 2	43.81	1175.90	6160.42	cps	
Window 4	226.45	1217.97	4891.35	cps	
Window 5	519.17	8959.34	17037.10	cps	
Window 6	39.35	1453.85	2926.68	cps	
Window 8	253.66	2919.24	5361.51	cps	
Bulk Density	-	2.6020	1.6830	g/cc	
Pe	-	3.0000	2.5070	b/e	
LS Alpha:	: -1.7699	SS Alpha:	: -0.7448	LS CPE:	: 1.1844
LS Beta:	: 101708.6271	SS Beta:	: 19263.5258	SS CPE:	: 1.5835

Before Survey Background Counts Verification

Performed: Wed Dec 31 18:00:00 1969

Window 1	0.00	cps
Window 2	0.00	cps
Window 4	0.00	cps
Window 5	0.00	cps
Window 6	0.00	cps
Window 8	0.00	cps

After Survey Background Counts Verification

Performed: Wed Dec 31 18:00:00 1969

Window 1	0.00	cps
Window 2	0.00	cps
Window 4	0.00	cps
Window 5	0.00	cps
Window 6	0.00	cps
Window 8	0.00	cps

Lithodensity Caliper Calibration

Performed: Fri May 12 10:26:47 2023

Results	Readings		References (in)		Gain	Offset
	Low	High	Low	High		
	1891.2	737.1	6.0	16.0	-0.0	23.4

Before Survey Caliper Verification

Performed:

	Reference	Reading
Caliper (in)	_____	_____

After Survey Caliper Verification

Performed:

	Reference	Reading
Caliper (in)	_____	_____

Compensated Neutron Calibration Report

Serial Number: 080621PMC
 Tool Model: NABORS

PRE-SURVEY VERIFICATION

Detector	Readings	Measured	Target
Short Space	cps		
Long Space	cps	pu	pu

POST-SURVEY VERIFICATION

Detector	Readings	Measured	Target
Short Space	cps		
Long Space	cps	pu	pu

Gamma Ray Calibration Report

Serial Number:	7	
Tool Model:	Probe1	
Performed:	Tue Aug 01 20:36:29 2023	
Calibrator Value:	1.0	GAPI
Background Reading:	0.0	cps
Calibrator Reading:	1.0	cps
Sensitivity:	0.4400	GAPI/cps