



MICRO LOG

Company SHELBY RESOURCES, LLC.
Well DYMOND #1-5
Field UNNAMED
County PRATT State KANSAS

Location: API #: 15-151-22573-0000
1978 FNL & 1132 FEL
SW - NW - SE - NE
SEC 5 TWP 29S RGE 14W
Permanent Datum GROUND LEVEL Elevation 2034
Log Measured From KELLY BUSHING 12' A.G.L.
Drilling Measured From KELLY BUSHING
Other Services
CDL/CNL/PE
DIL/SON
Elevation
K.B. 2046
D.F. 2044
G.L. 2034

Table with columns: Date, Run Number, Depth Driller, Depth Logger, Bottom Logged Interval, Top Log Interval, Casing Driller, Casing Logger, Bit Size, Type Fluid in Hole, Density / Viscosity, PH / Fluid Loss, Source of Sample, Rim @ Meas. Temp, Rmc @ Meas. Temp, Source of Rmf / Rmc, Rim @ BHT, Time Circulation Stopped, Time Logger on Bottom, Maximum Recorded Temperature, Equipment Number, Location, Recorded By, Witnessed By.

<<< Fold Here >>>

All interpretations are opinions based on inferences from electrical or other measurements and we cannot and do not guarantee the accuracy or correctness of any interpretation, and we shall not, except in the case of gross or willful negligence on our part, be liable or responsible for any loss, costs, damages, or expenses incurred or sustained by anyone resulting from any interpretation made by any of our officers, agents or employees. These interpretations are also subject to our general terms and conditions set out in our current Price Schedule.

Comments

THANK YOU FOR USING ELI WIRELINE SERVICES, HAYS, KS. (785) 628-6395

DIRECTIONS:

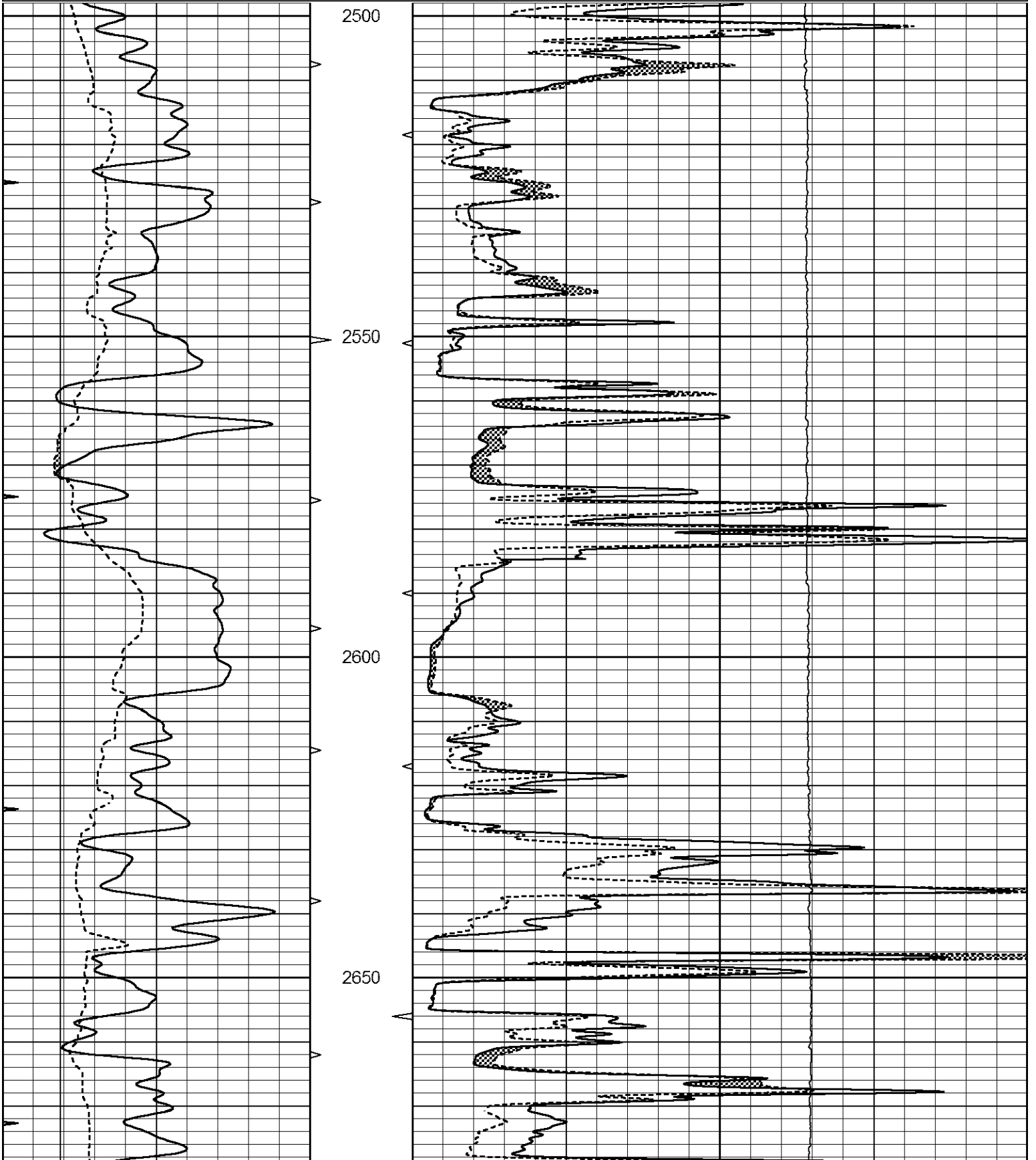
FROM PRATT, KANSAS GO WEST 7 MILES TO SW 70TH AVE., SOUTH 5 1/2 MILES, WEST INTO

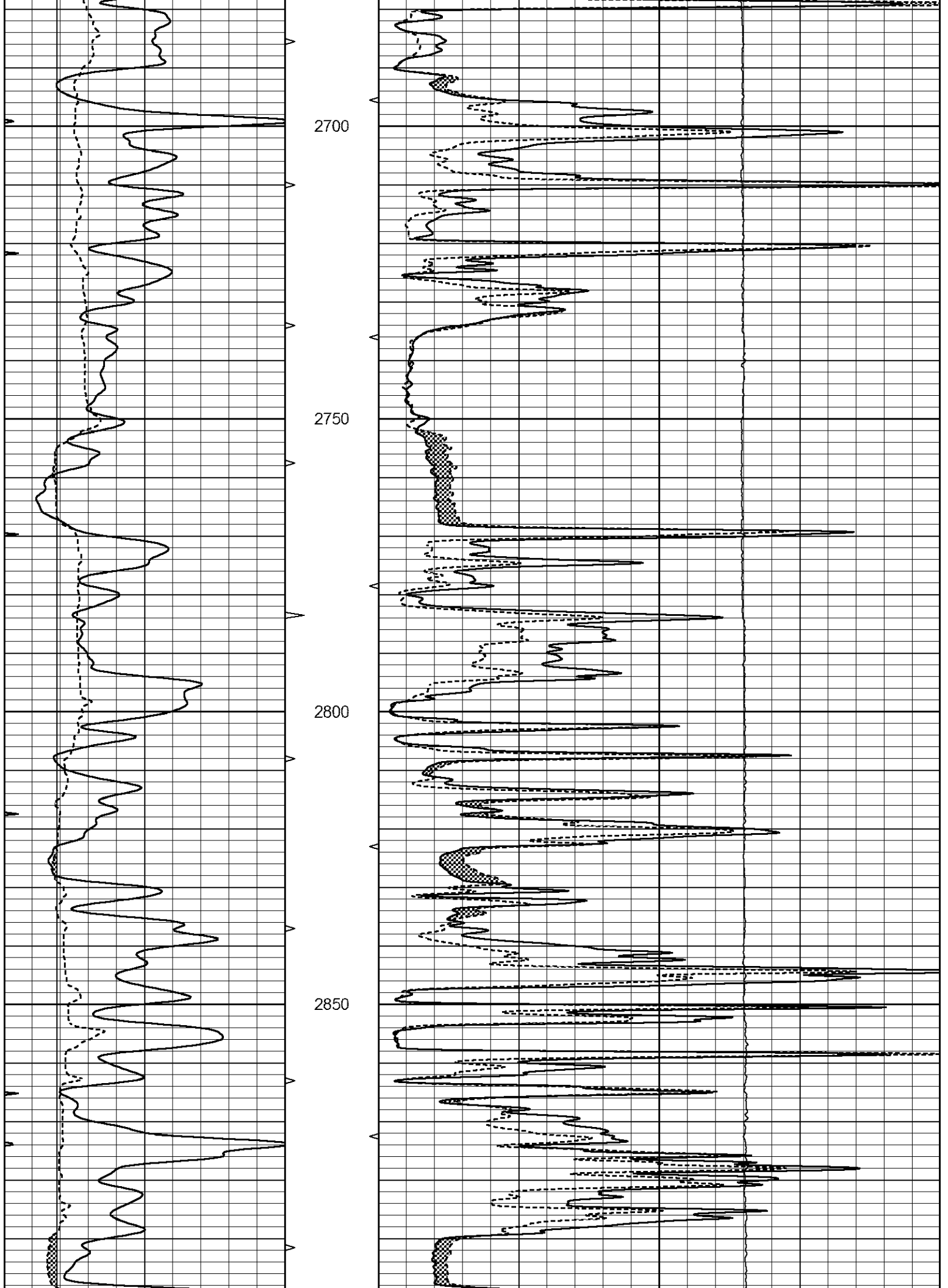


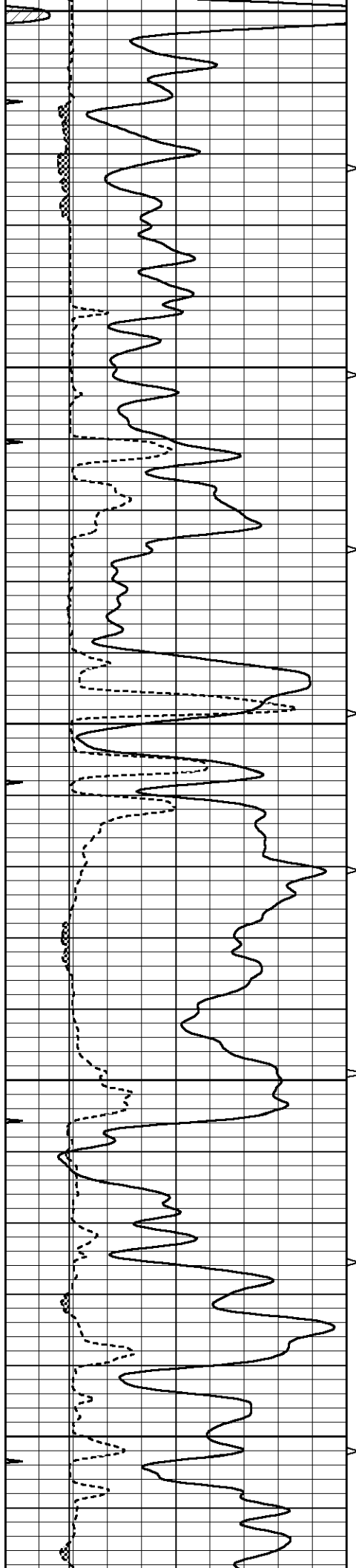
MAIN SECTION

Database File 7781pe.db
 Dataset Pathname pass6MEL
 Presentation Format _micro
 Dataset Creation Fri Oct 13 03:20:03 2023
 Charted by Depth in Feet scaled 1:240

| | | | | | | |
|---|------------------|-----|----------|----|----------------|------|
| 0 | GAMMA RAY (GAPI) | 150 | ABHV | 0 | MEL1.5 (Ohm-m) | 40 |
| 6 | CALIPER (in) | 16 | 10 (ft3) | 0 | MEL2.0 (Ohm-m) | 40 |
| 0 | MINMK | 20 | TBHV | 0 | LTEN (lb) | 5000 |
| | | | 0 (ft3) | 10 | | |







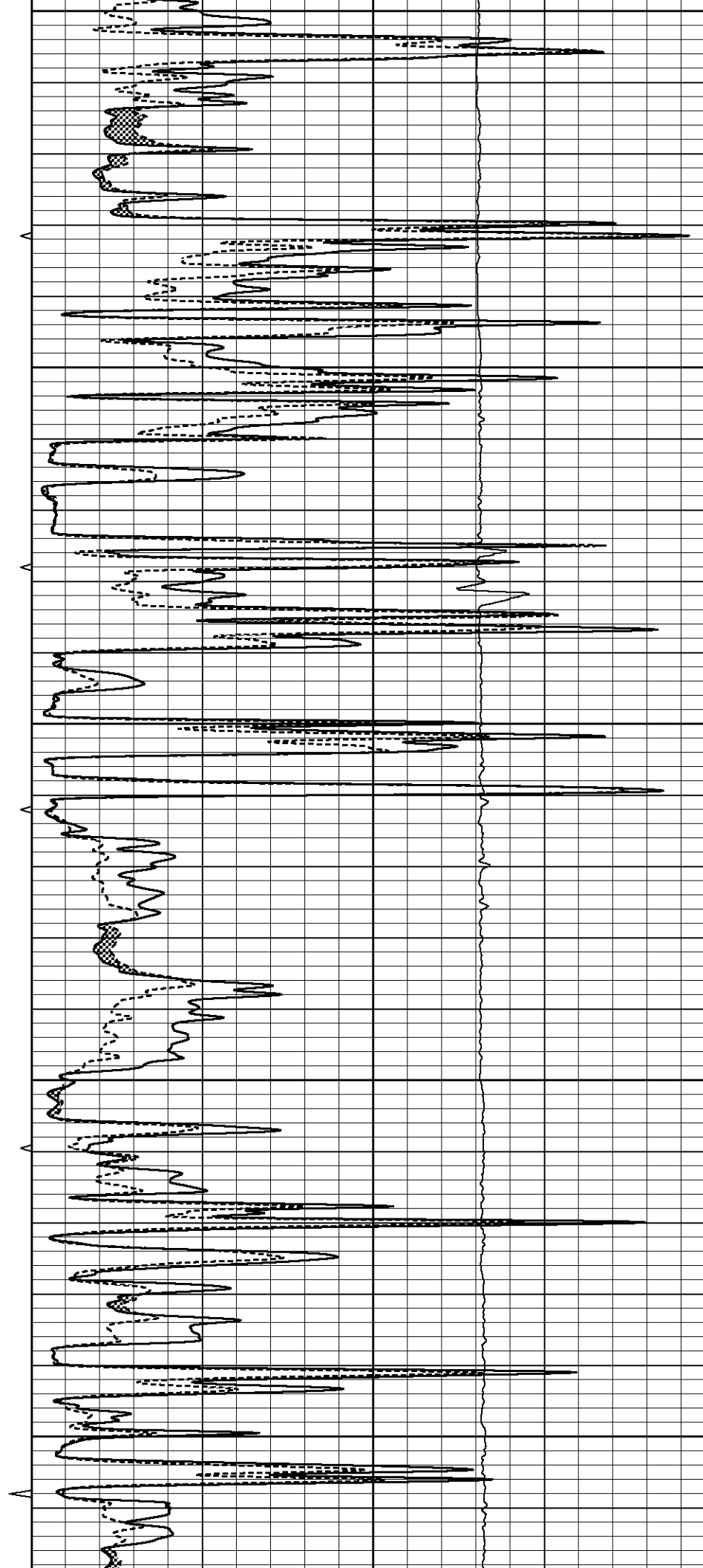
2900

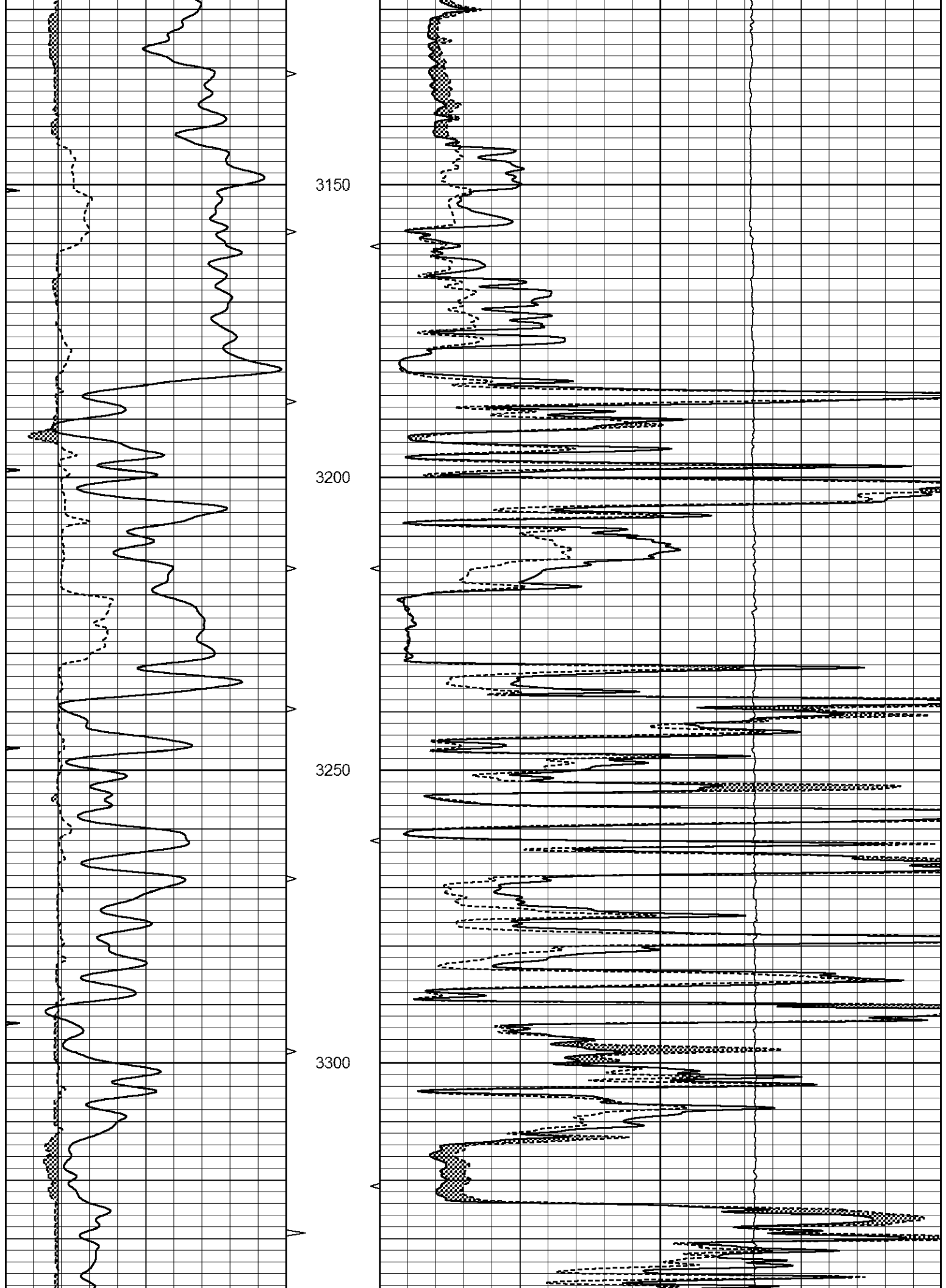
2950

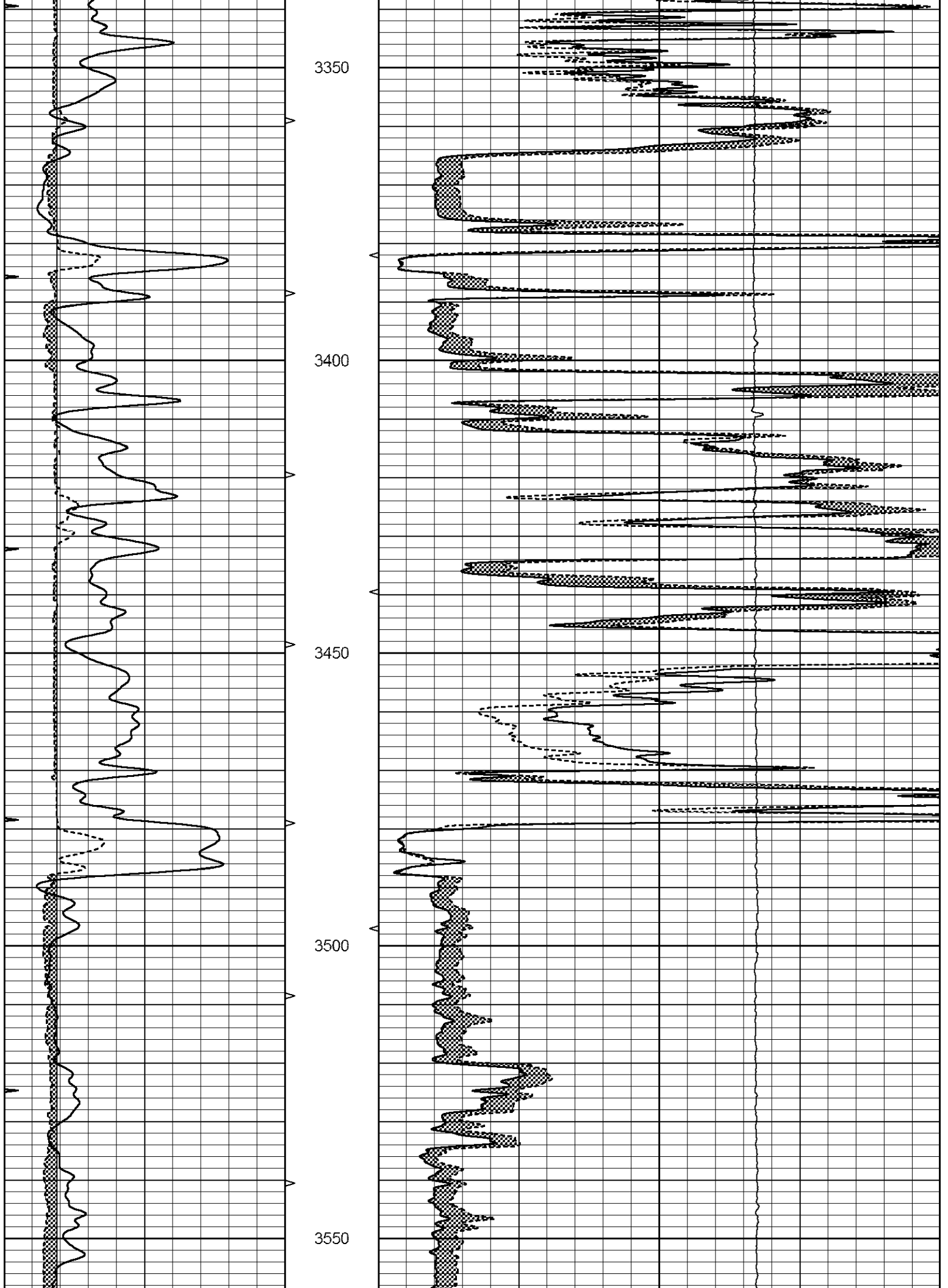
3000

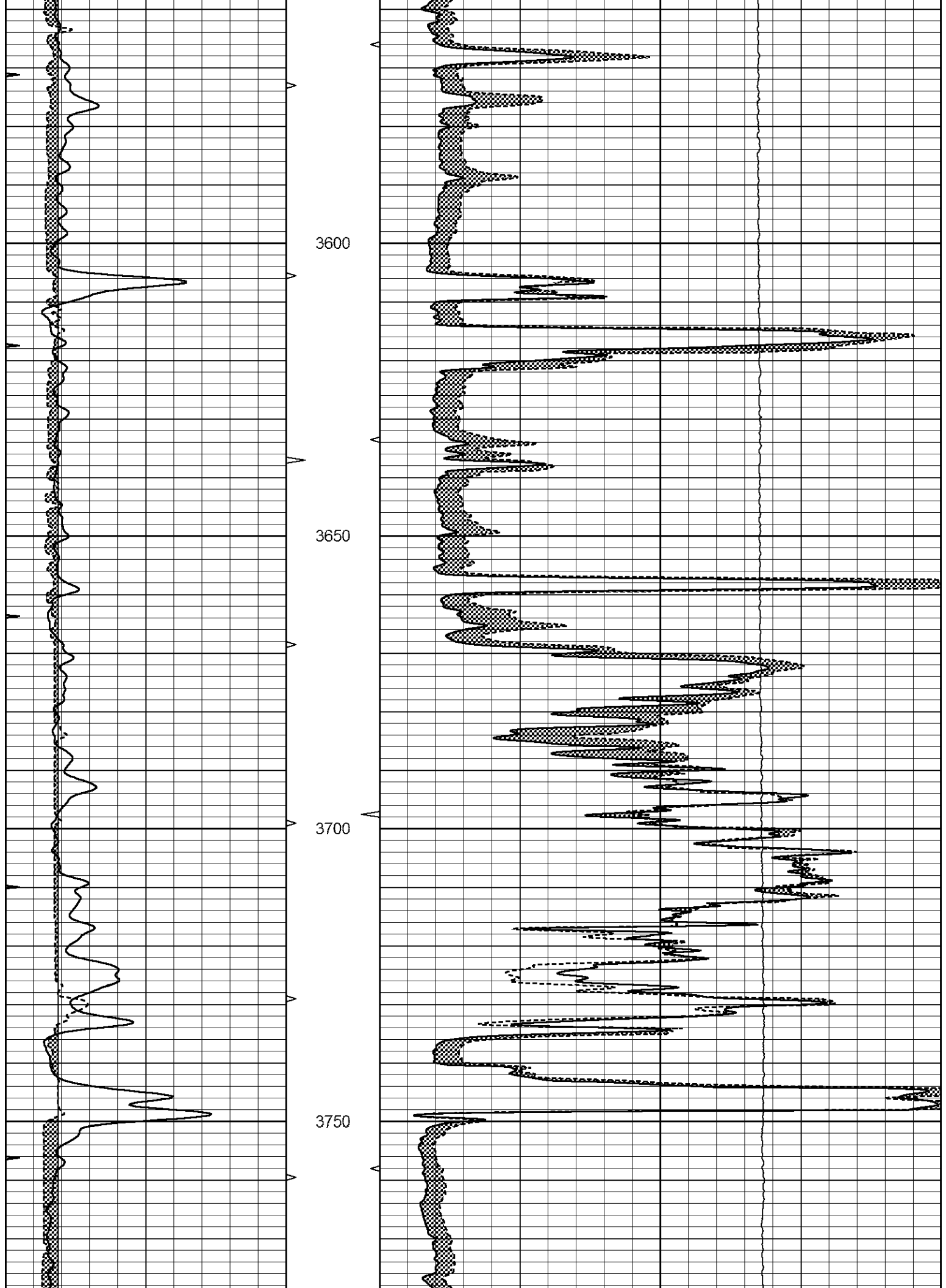
3050

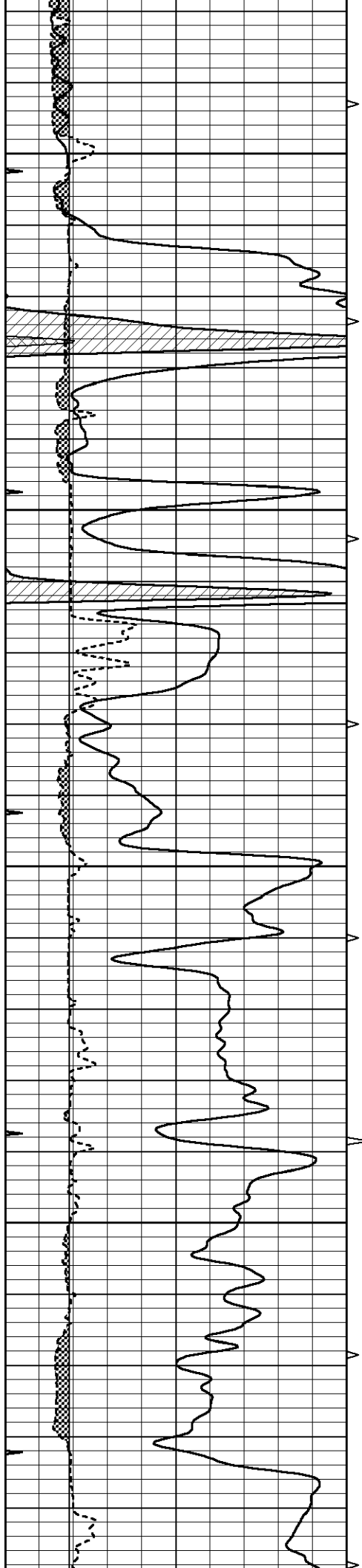
3100









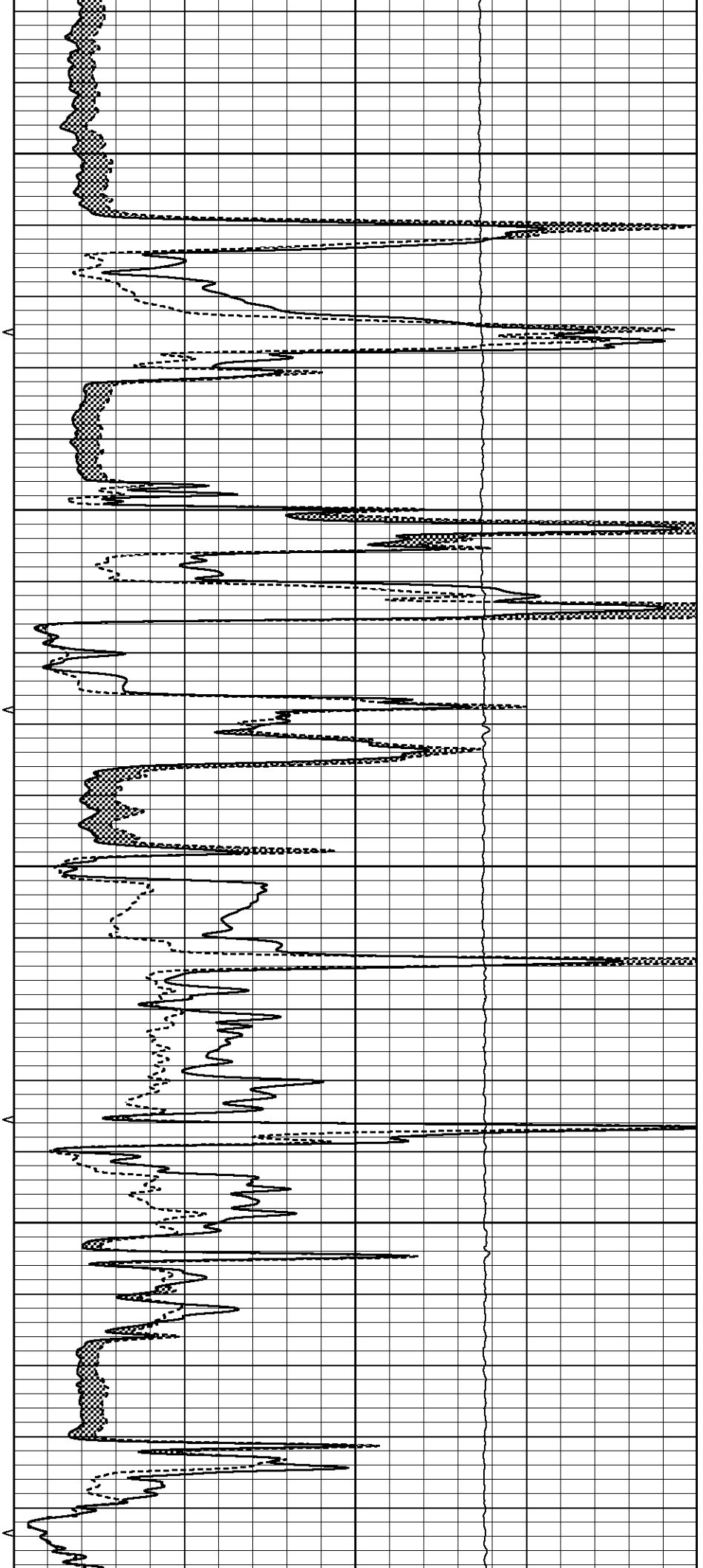


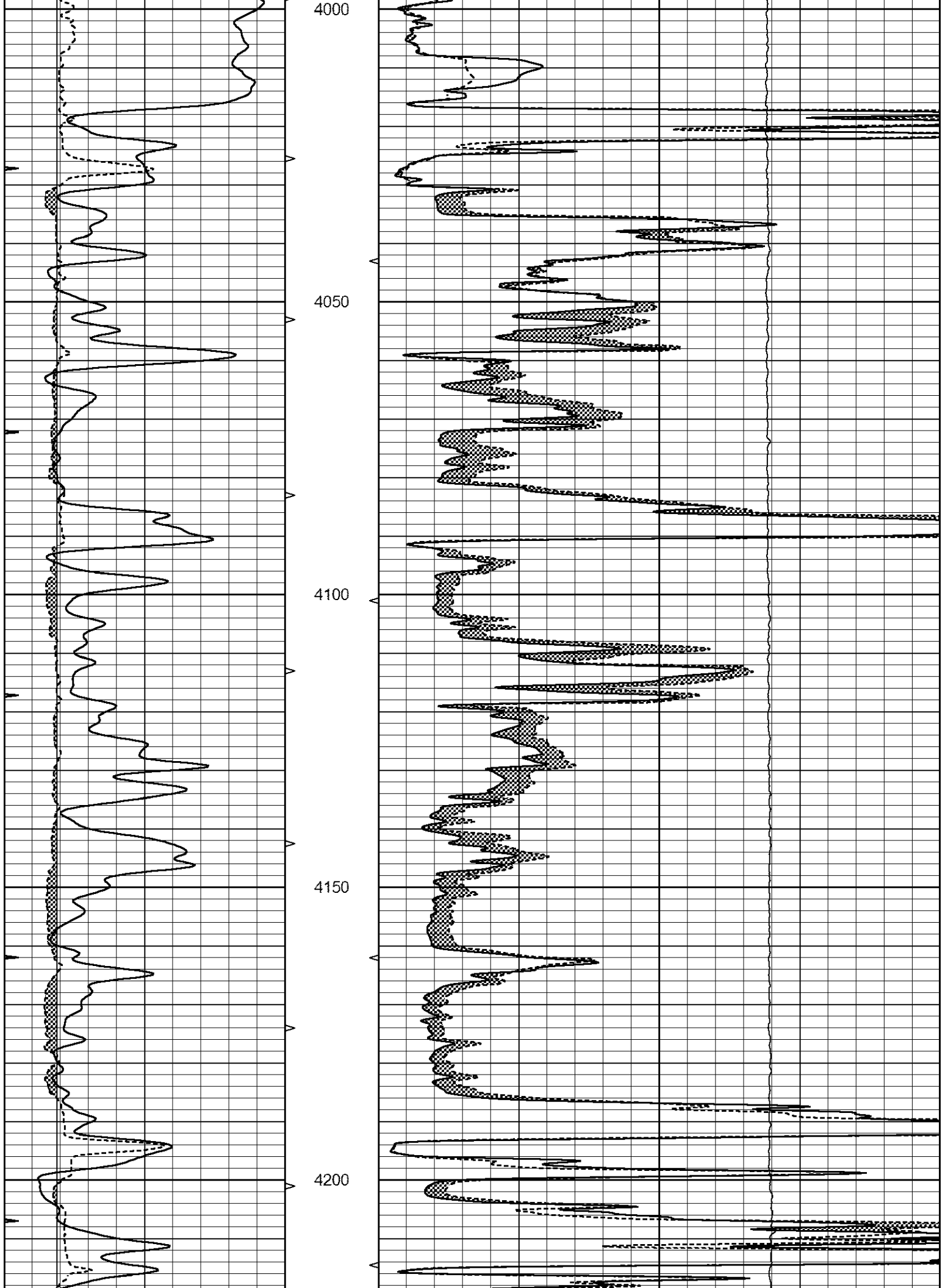
3800

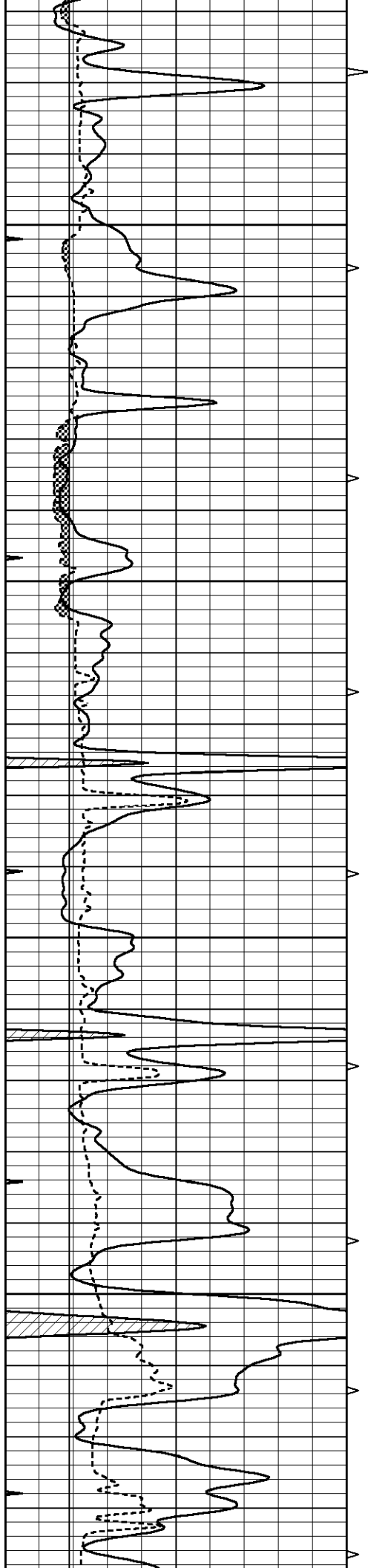
3850

3900

3950





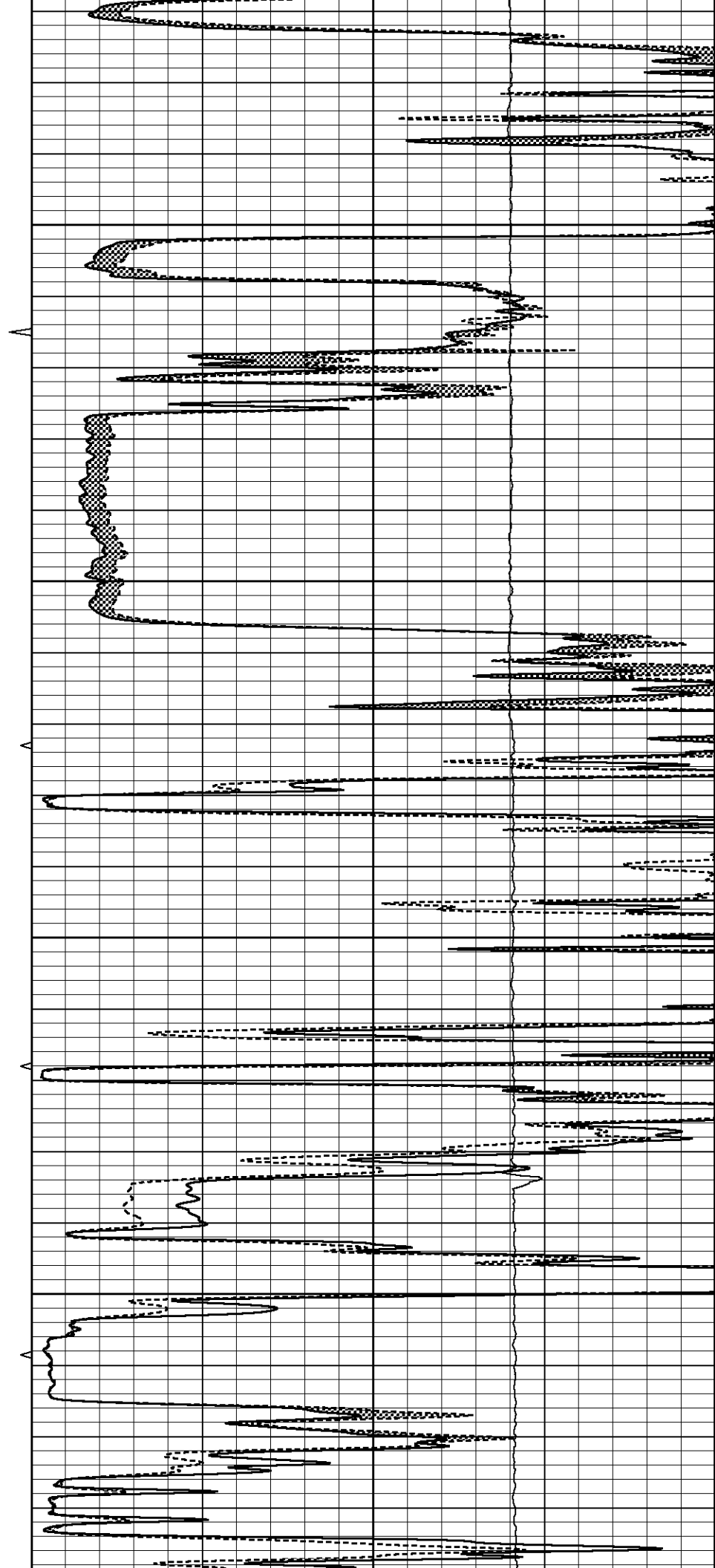


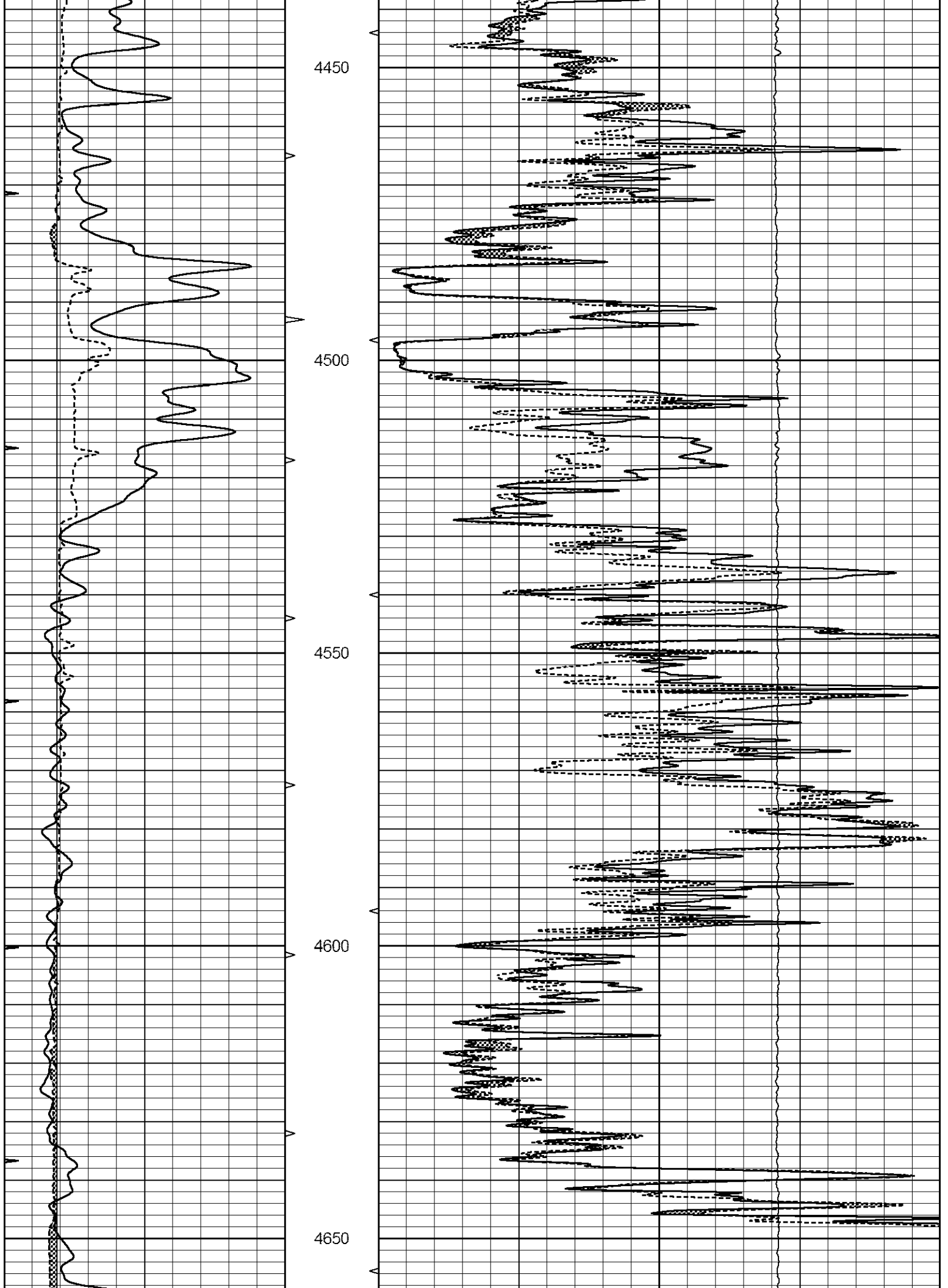
4250

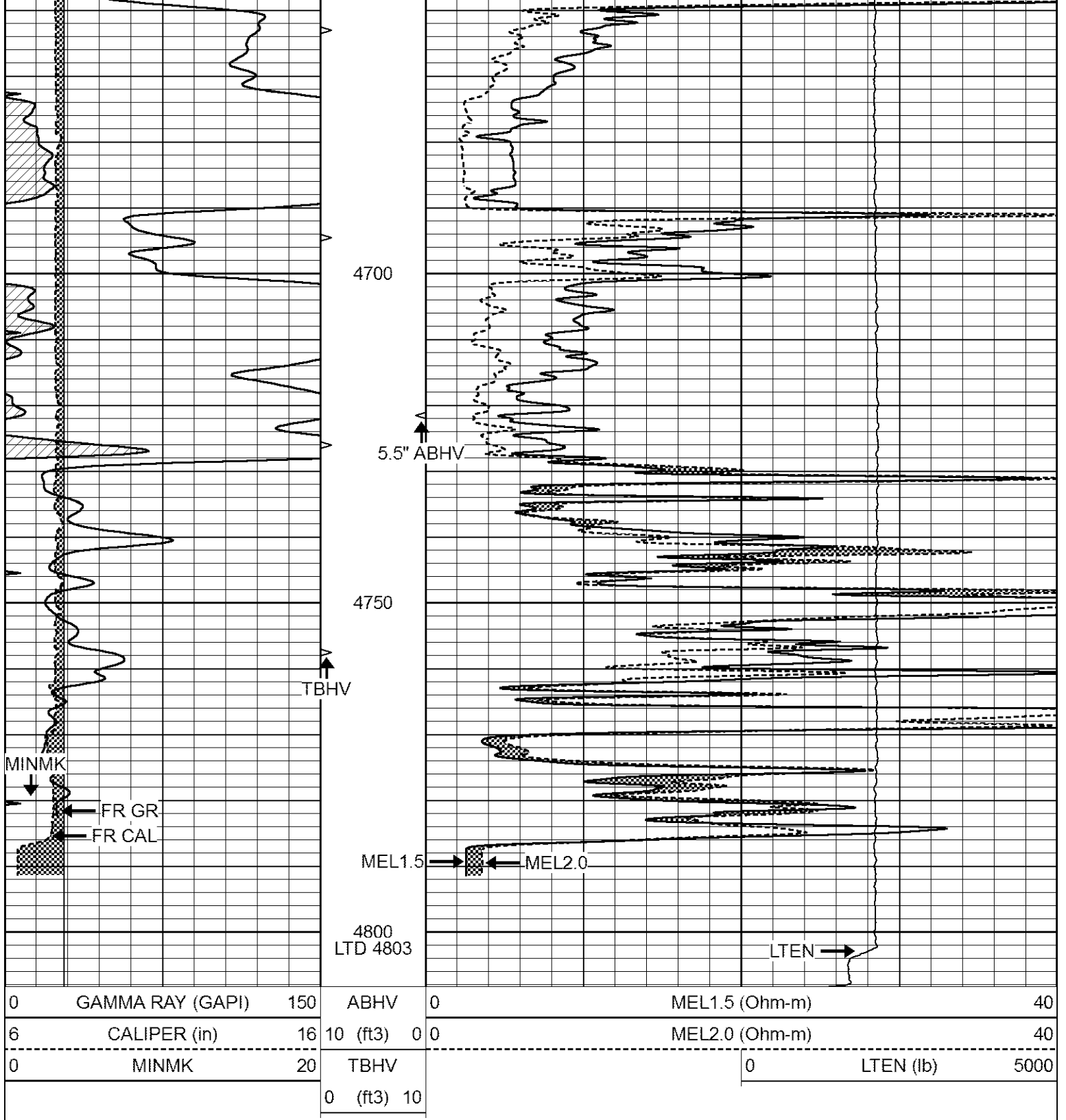
4300

4350

4400





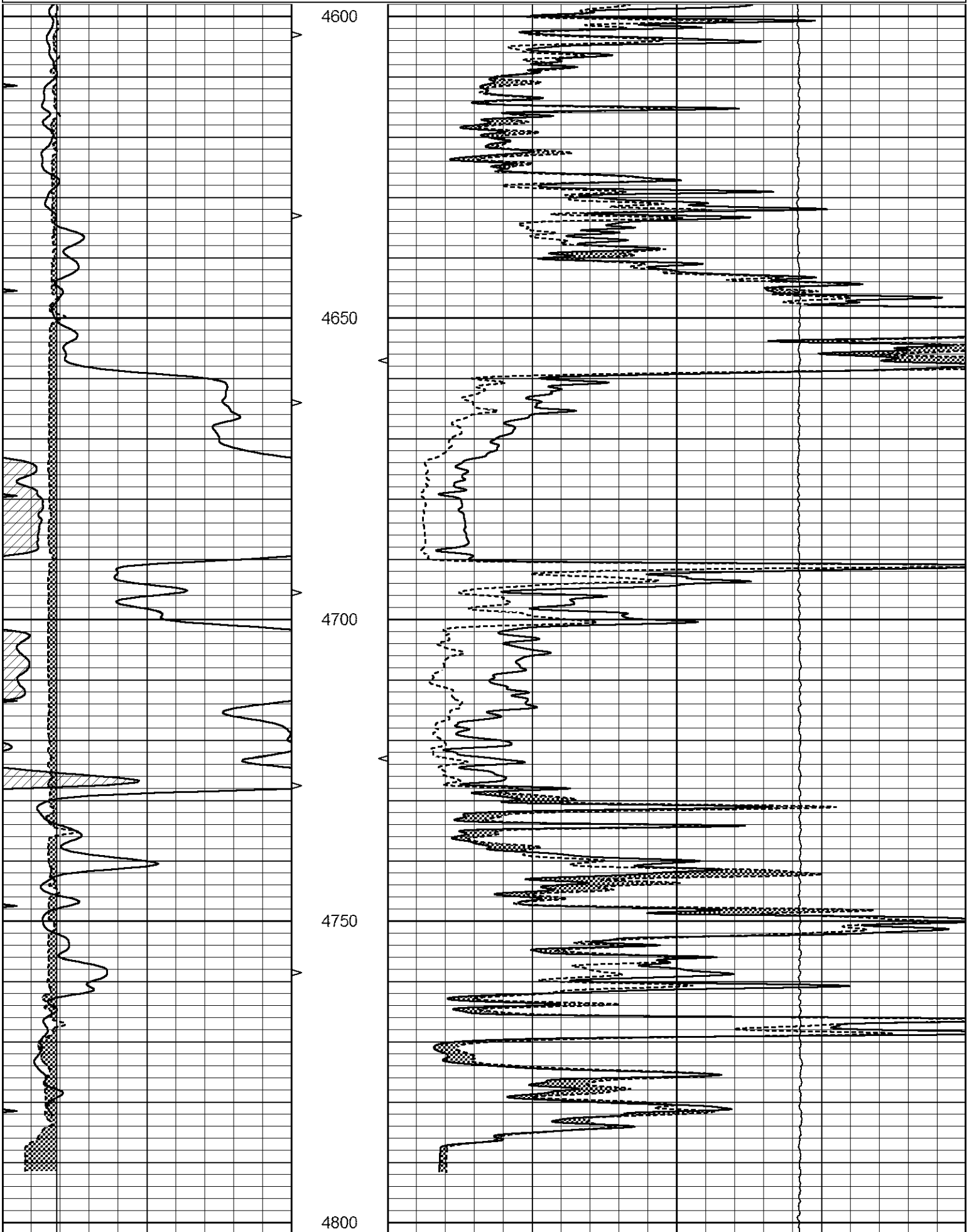


REPEAT SECTION

Database File 7781pe.db
 Dataset Pathname pass5R
 Presentation Format _micro
 Dataset Creation Fri Oct 13 03:22:05 2023
 Charted by Depth in Feet scaled 1:240

| | | | | | | |
|---|------------------|-----|------|---|----------------|----|
| 0 | GAMMA RAY (GAPI) | 150 | ABHV | 0 | MEL1.5 (Ohm-m) | 40 |
|---|------------------|-----|------|---|----------------|----|

| | | | | | | |
|---|--------------|----|----------|-----|----------------|-----------|
| 6 | CALIPER (in) | 16 | 10 (ft3) | 0 0 | MEL2.0 (Ohm-m) | 40 |
| 0 | MINMK | 20 | TBHV | | 0 | LTEN (lb) |
| | | | 0 (ft3) | 10 | | 5000 |



| | | | | | | |
|---|------------------|-----|------------|---|----------------|------|
| 0 | GAMMA RAY (GAPI) | 150 | ABHV | 0 | MEL1.5 (Ohm-m) | 40 |
| 6 | CALIPER (in) | 16 | 10 (ft3) 0 | 0 | MEL2.0 (Ohm-m) | 40 |
| 0 | MINMK | 20 | TBHV | 0 | LTEN (lb) | 5000 |
| | | | 0 (ft3) 10 | | | |

Calibration Report

Database File 7781pe.db
Dataset Pathname pass6MEL
Dataset Creation Fri Oct 13 03:20:03 2023

MICRO_USR Calibration Report

Serial Number: 070911
Tool Model: ProbeL
Performed: Fri Sep 15 13:51:55 2023

Caliper Calibration: Gain=4.500 Offset=0.750

| | | |
|------------|---------|----------|
| References | Low Cal | High Cal |
| Readings | 8.000 | 14.000 |
| | 1.451 | 3.049 |

1.5" Calibration: Gain=36.500 Offset=-0.500

| | | |
|------------|---------|----------|
| References | Low Cal | High Cal |
| Readings | 0.000 | 20.000 |
| | 0.004 | 0.843 |

2" Calibration: Gain=36.000 Offset=-0.200

| | | |
|------------|---------|----------|
| References | Low Cal | High Cal |
| Readings | 0.000 | 20.000 |
| | 0.021 | 0.810 |

Microlog Calibration Report

Serial-Model: 070911-ProbeL
Performed: Sat May 14 04:48:25 2022

| | Readings | | | V | References | | | Results | |
|---------|----------|--------|---|--------|------------|-------|---------|---------|---|
| | Zero | Cal | | | Zero | Cal | | m | b |
| Normal | 0.0002 | 0.4836 | V | 0.0000 | 10.0000 | Ohm-m | 20.6908 | -0.0051 | |
| Inverse | 0.0018 | 0.6297 | V | 0.0000 | 10.0000 | Ohm-m | 15.9263 | -0.0282 | |
| Caliper | 0.0000 | 1.0000 | V | 0.0000 | 1.0000 | in | 1.0000 | 0.0000 | |

Gamma Ray Calibration Report

Serial Number: 070558
Tool Model: Probe1
Performed: Sat Sep 30 18:38:35 2023

Calibrator Value: 1.0 GAPI

Background Reading: 0.0 cps
Calibrator Reading: 1.0 cps

Sensitivity: 0.2700 GAPI/cps