



**COMPENSATED  
DENSITY/NEUTRON  
PE LOG**

Company SHELBY RESOURCES, LLC.  
Well DYMOND #1-5  
Field UNNAMED  
County PRATT State KANSAS

Location: API #: 15-151-22573-0000  
1978 FNL & 1132 FEL  
SW - NW - SE - NE  
SEC 5 TWP 29S RGE 14W  
Permanent Datum GROUND LEVEL Elevation 2034  
Log Measured From KELLY BUSHING 12' A.G.L.  
Drilling Measured From KELLY BUSHING  
Other Services  
DILMEL  
SONIC  
Elevation  
K.B. 2046  
D.F. 2044  
G.L. 2034

Date	10/12/23	
Run Number	ONE	
Depth Driller	4800	
Depth Logger	4803	
Bottom Logged Interval	4779	
Top Log Interval	2500	
Casing Driller	8.625 @ 903	
Casing Logger	903	
Bit Size	7.875	
Type Fluid in Hole	CHEMICAL MUD	CHLORIDES 7.500 PPM
Density / Viscosity	9.3+154	
pH / Fluid Loss	11.0/8.8	
Source of Sample	FLOWLINE	
Rm @ Meas. Temp	.800 @ 76F	
Rmt @ Meas. Temp	.600 @ 76F	
Rmc @ Meas. Temp	.960 @ 76F	
Source of Rmf / Rmc	MEASUREMENT	
Rm @ BHT	.494 @ 123F	
Time Circulation Stopped	2 HOURS	
Time Logger on Bottom	11:00 P.M.	
Maximum Recorded Temperature	123F	
Equipment Number	3802	
Location	HAYS, KANSAS	
Recorded By	COLE ROBBEN	
Witnessed By	JEREMY SHWARTZ	

<<< Fold Here >>>

All interpretations are opinions based on inferences from electrical or other measurements and we cannot and do not guarantee the accuracy or correctness of any interpretation, and we shall not, except in the case of gross or willful negligence on our part, be liable or responsible for any loss, costs, damages, or expenses incurred or sustained by anyone resulting from any interpretation made by any of our officers, agents or employees. These interpretations are also subject to our general terms and conditions set out in our current Price Schedule.

**Comments**

THANK YOU FOR USING ELI WIRELINE SERVICES, HAYS, KS. ( 785 ) 628-6395

**DIRECTIONS:**

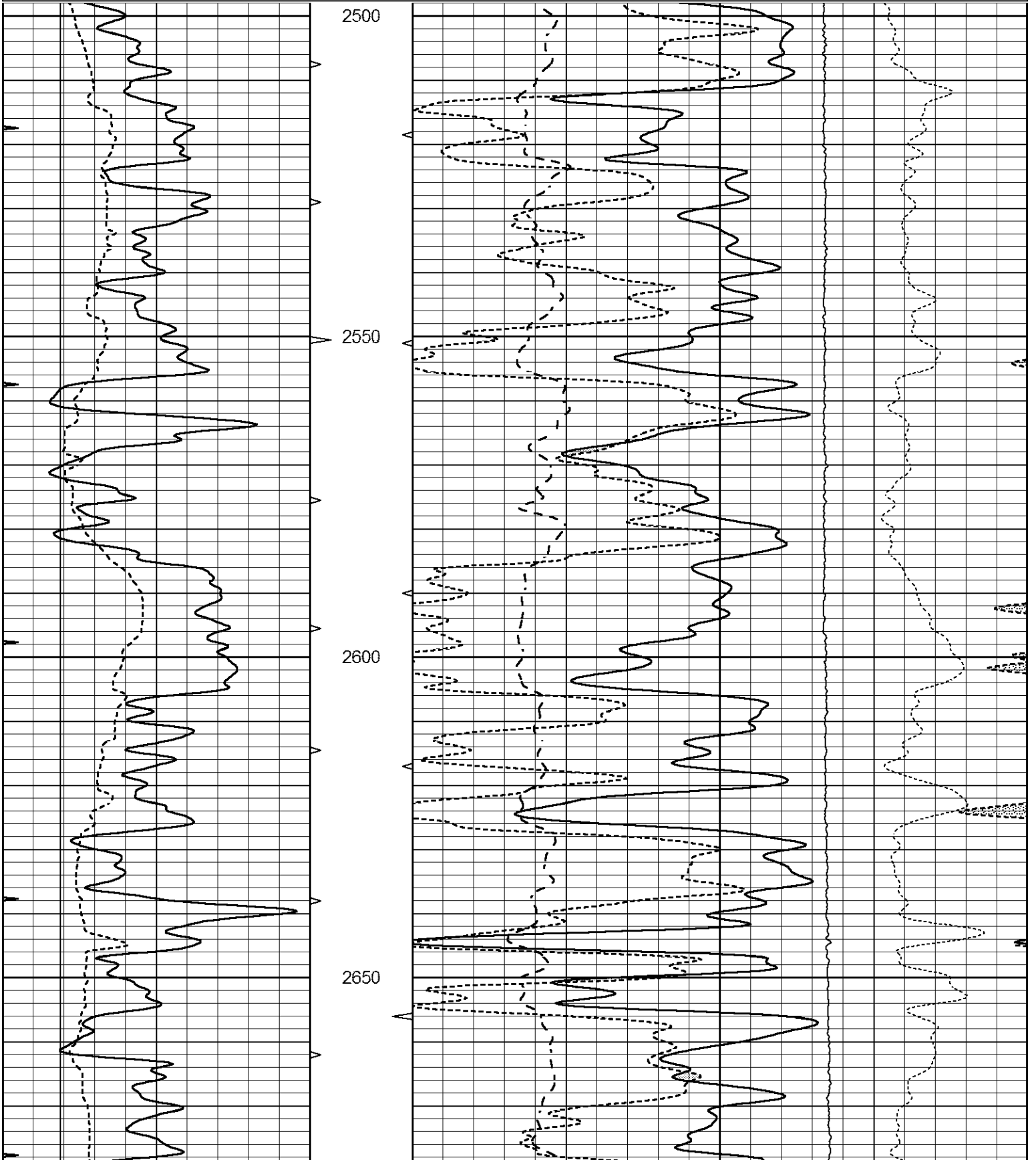
FROM PRATT, KANSAS GO WEST 7 MILES TO SW 70TH AVE., SOUTH 5 1/2 MILES, WEST INTO

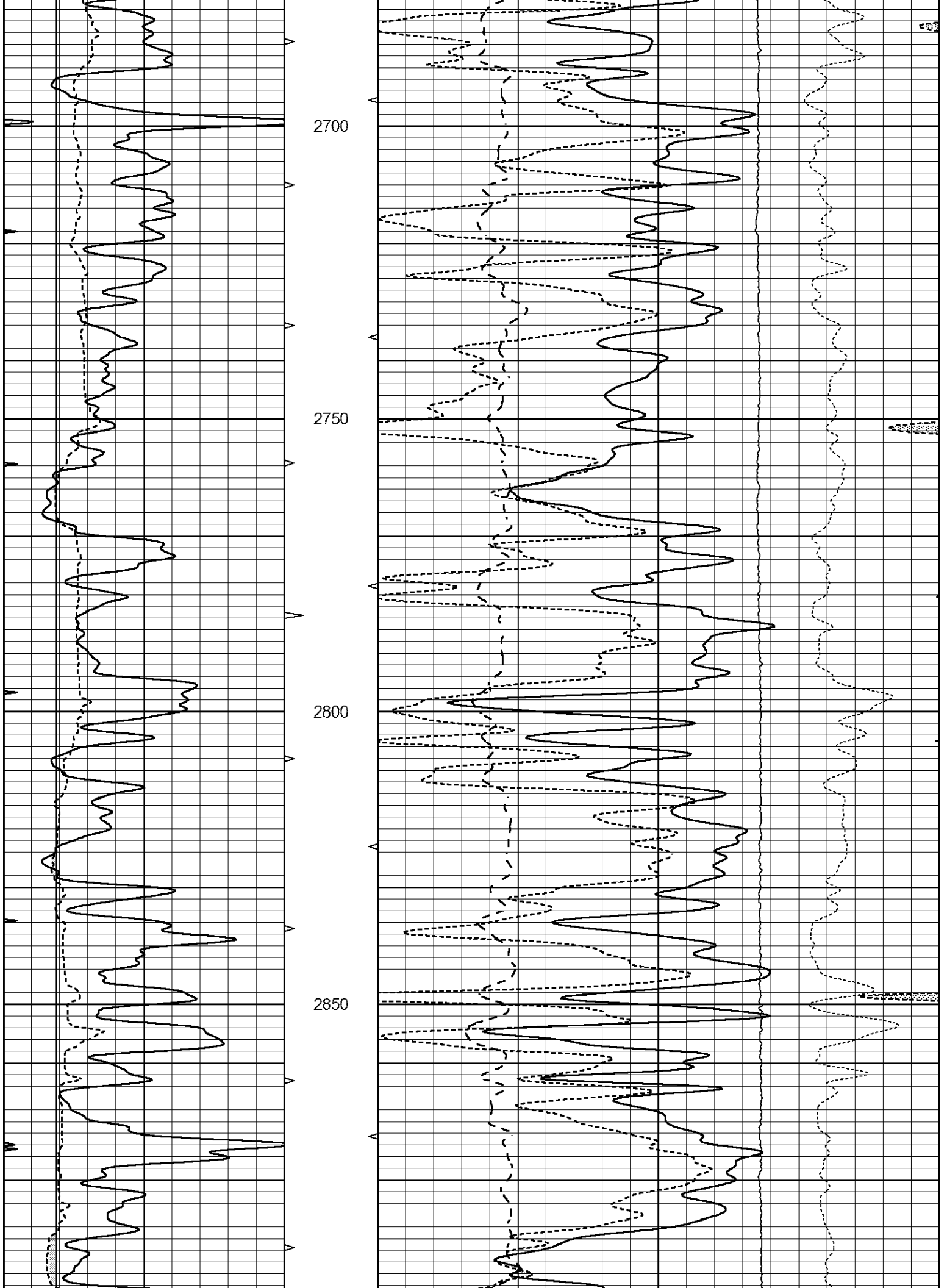


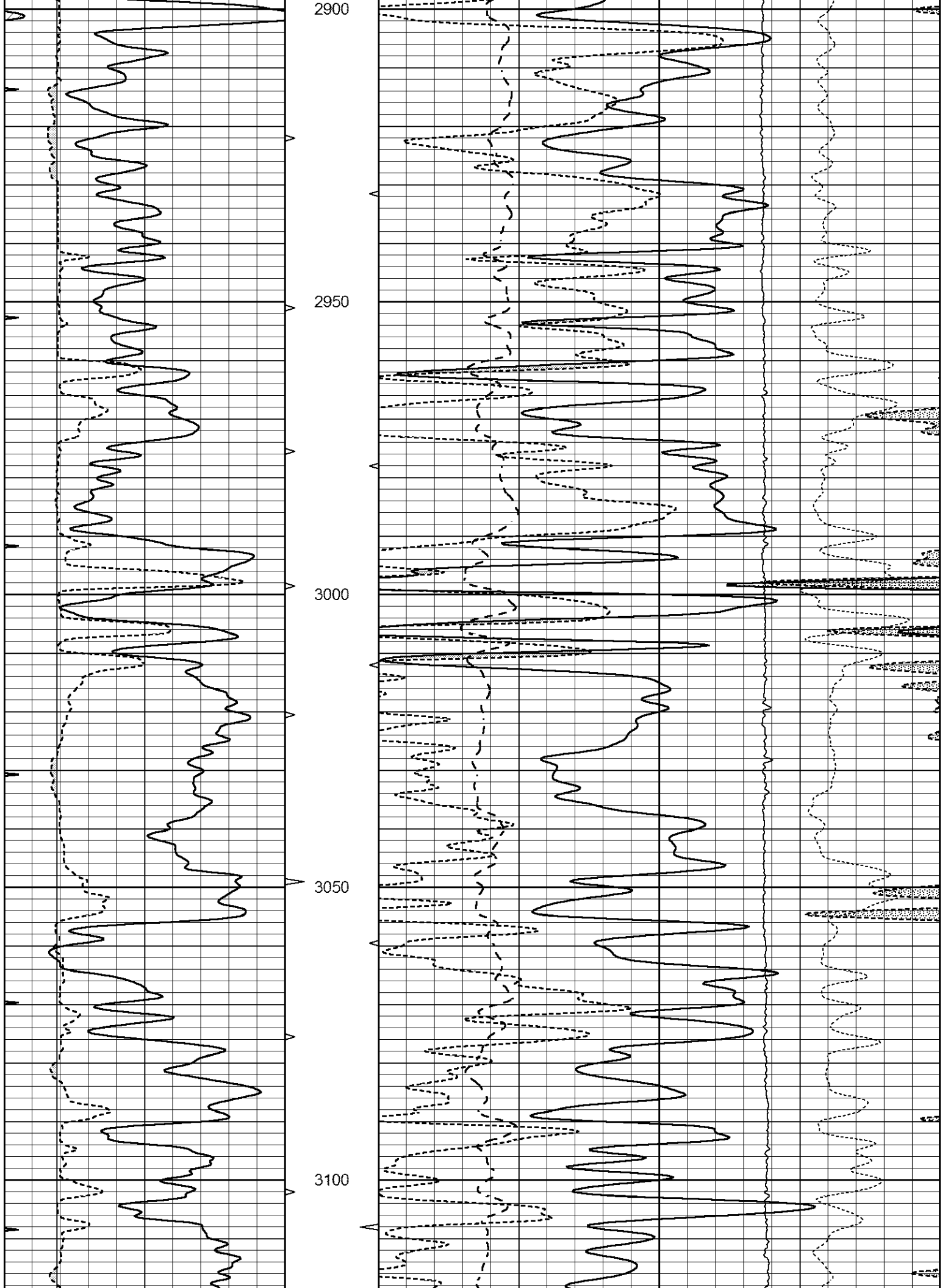
**MAIN SECTION**

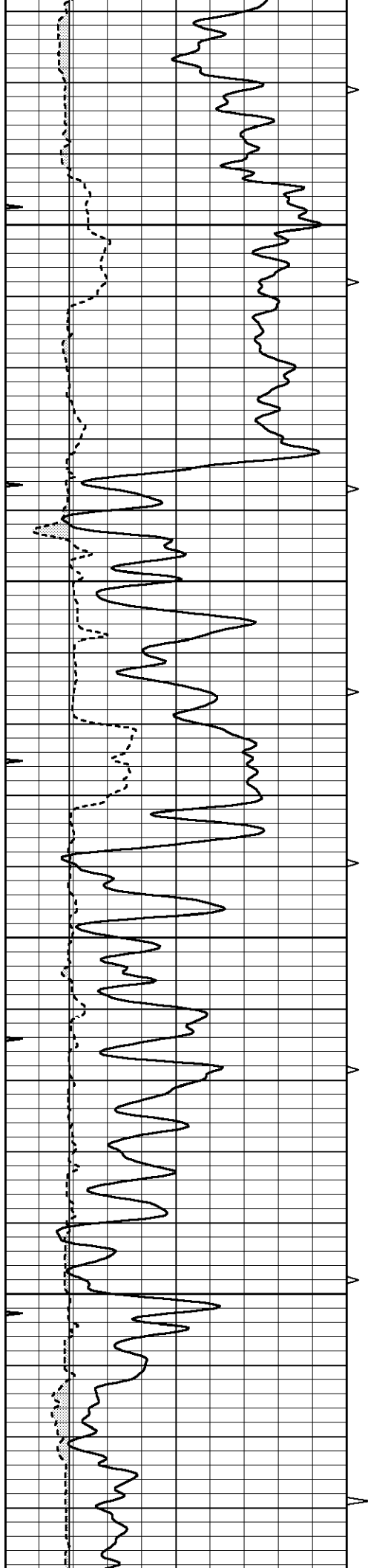
Database File 7781pe.db  
 Dataset Pathname pass3PE  
 Presentation Format \_ldt\_neu  
 Dataset Creation Fri Oct 13 02:20:52 2023  
 Charted by Depth in Feet scaled 1:240

0	GAMMA RAY (GAPI)	150	ABHV	30	COMPENSATED DENSITY (pu)				-10	
6	CALIPER (in)	16	10 (ft3)	0	30	COMPENSATED NEUTRON (pu)				-10
0	MINMK	20	TBHV	0	PE	10	-0.25	CORRECTION (g/cc)	0.25	
			0 (ft3)	10			0	LTEN (lb)	5000	







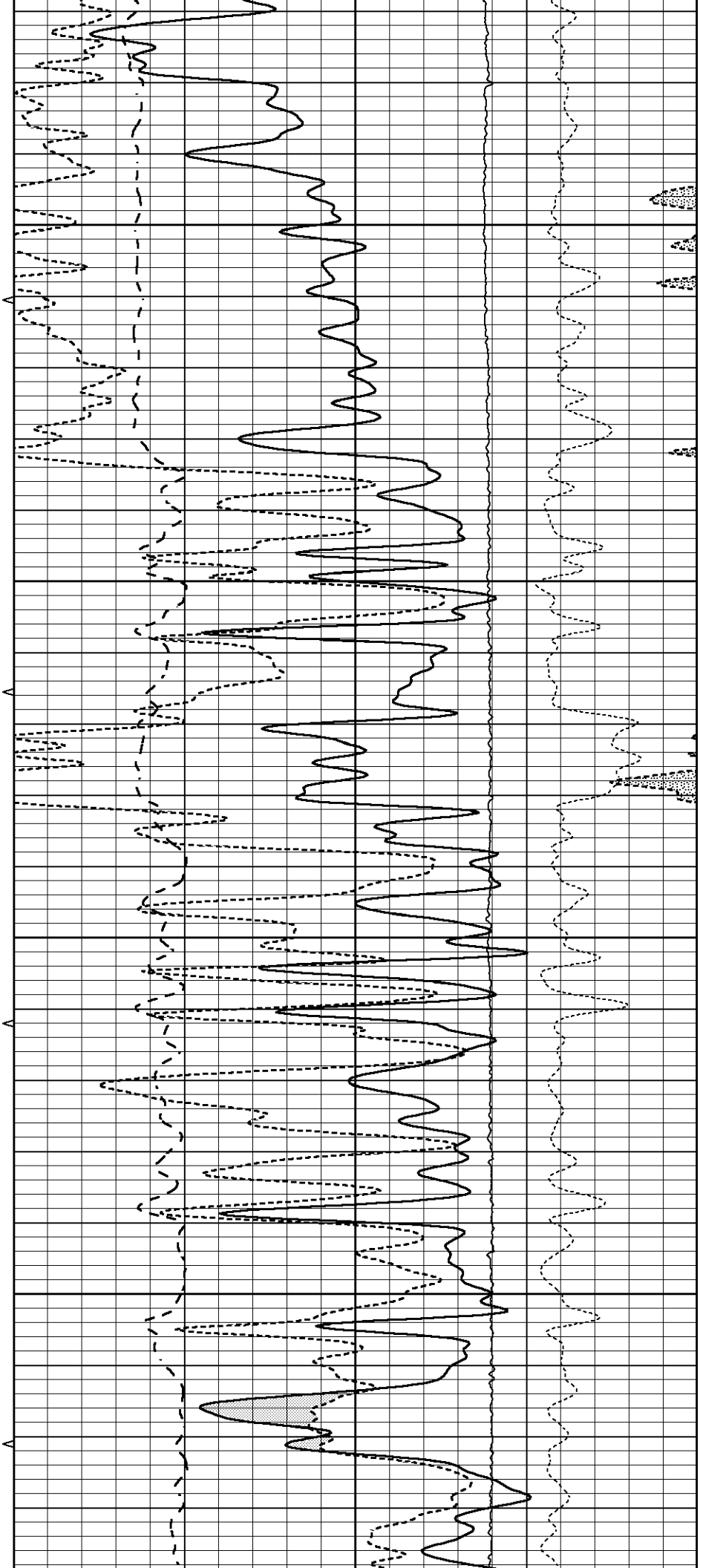


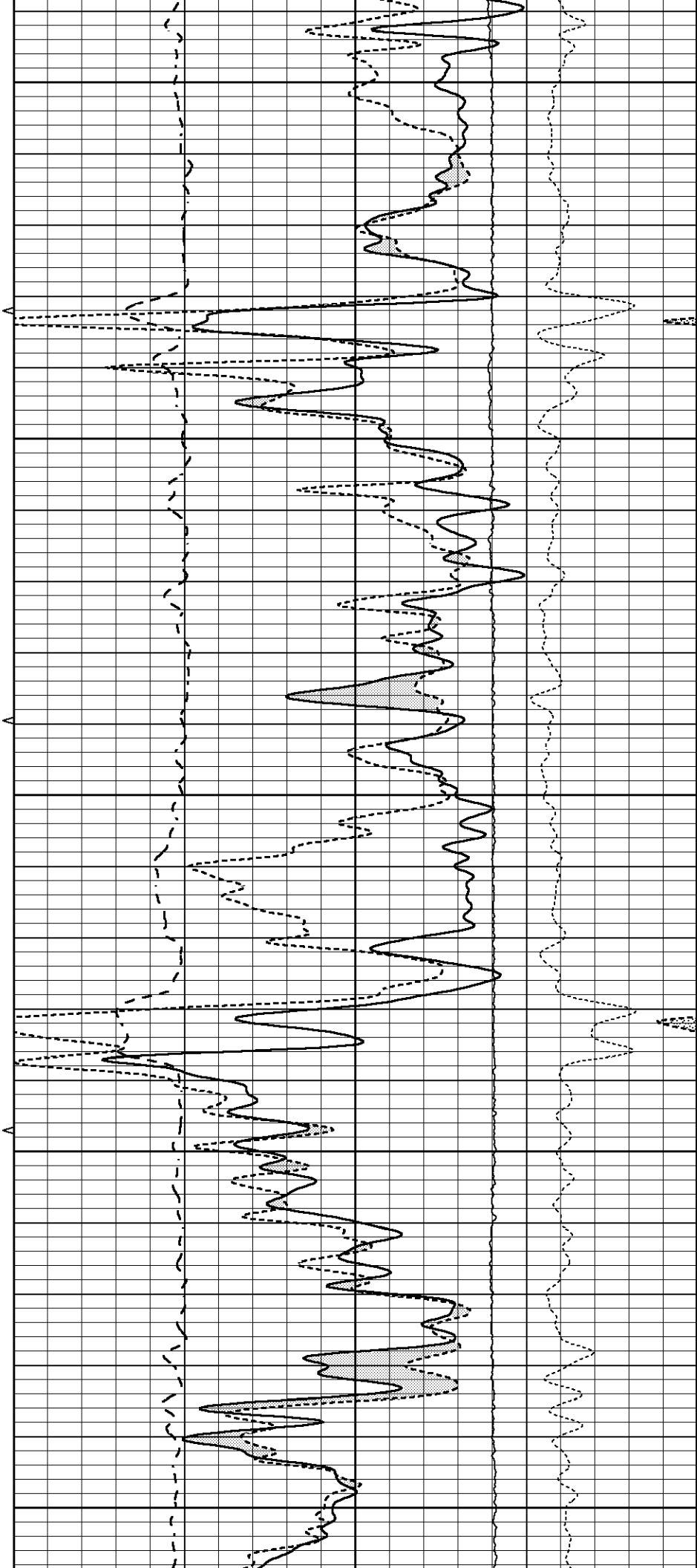
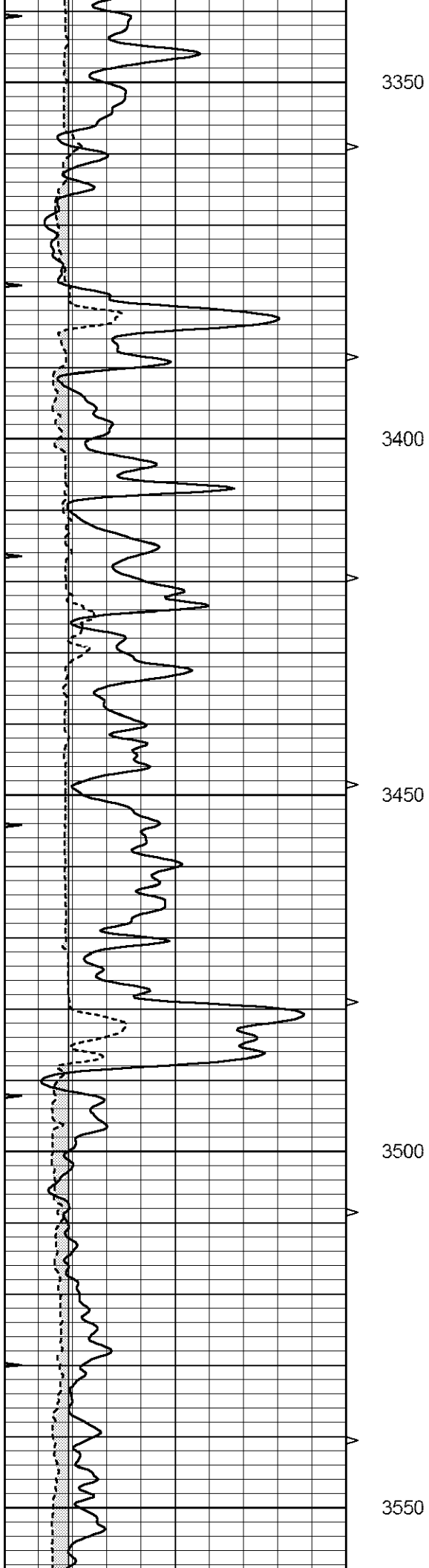
3150

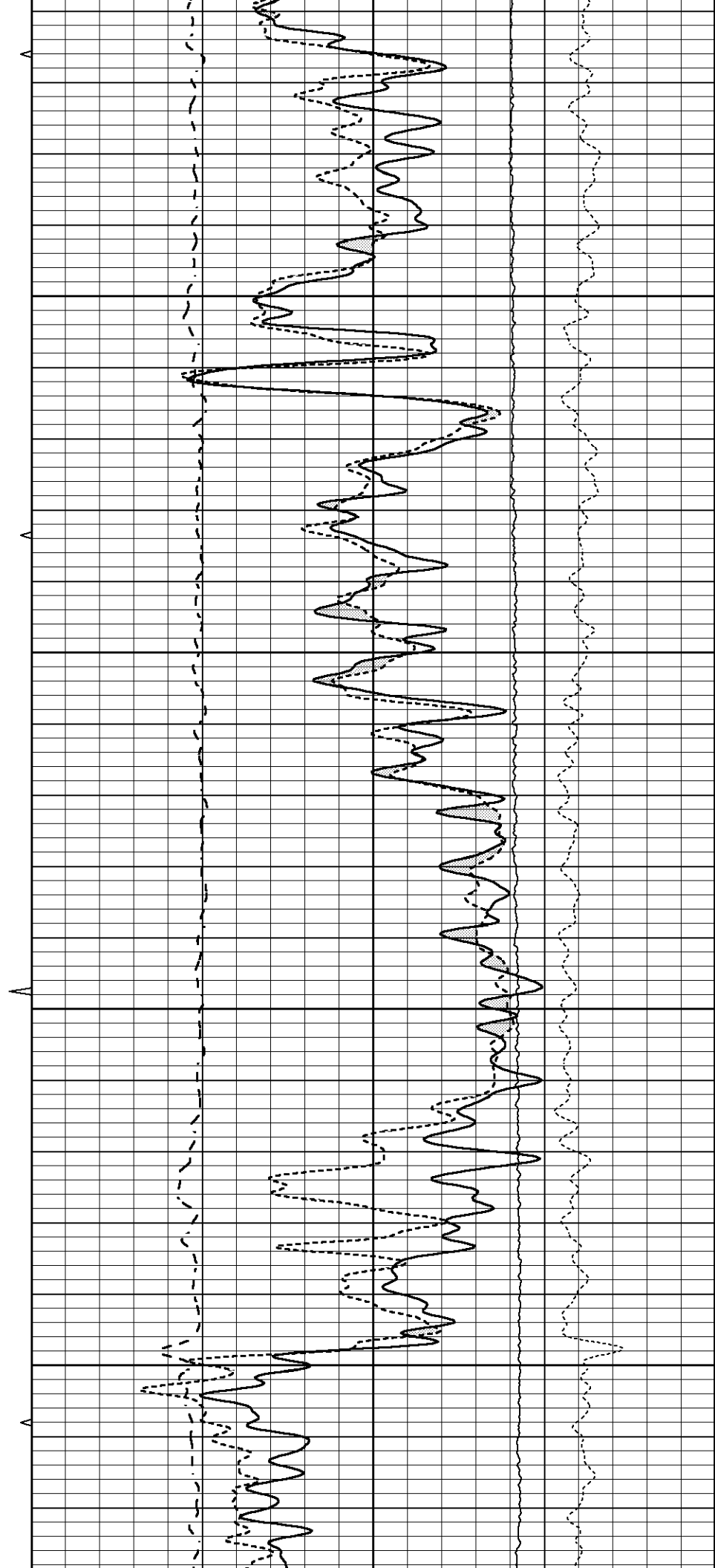
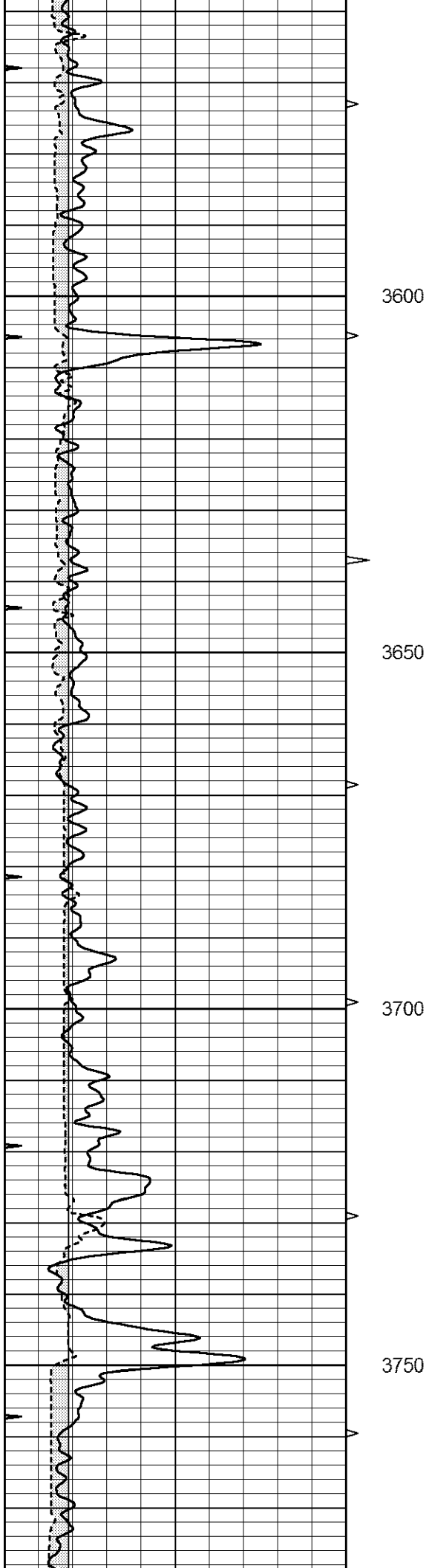
3200

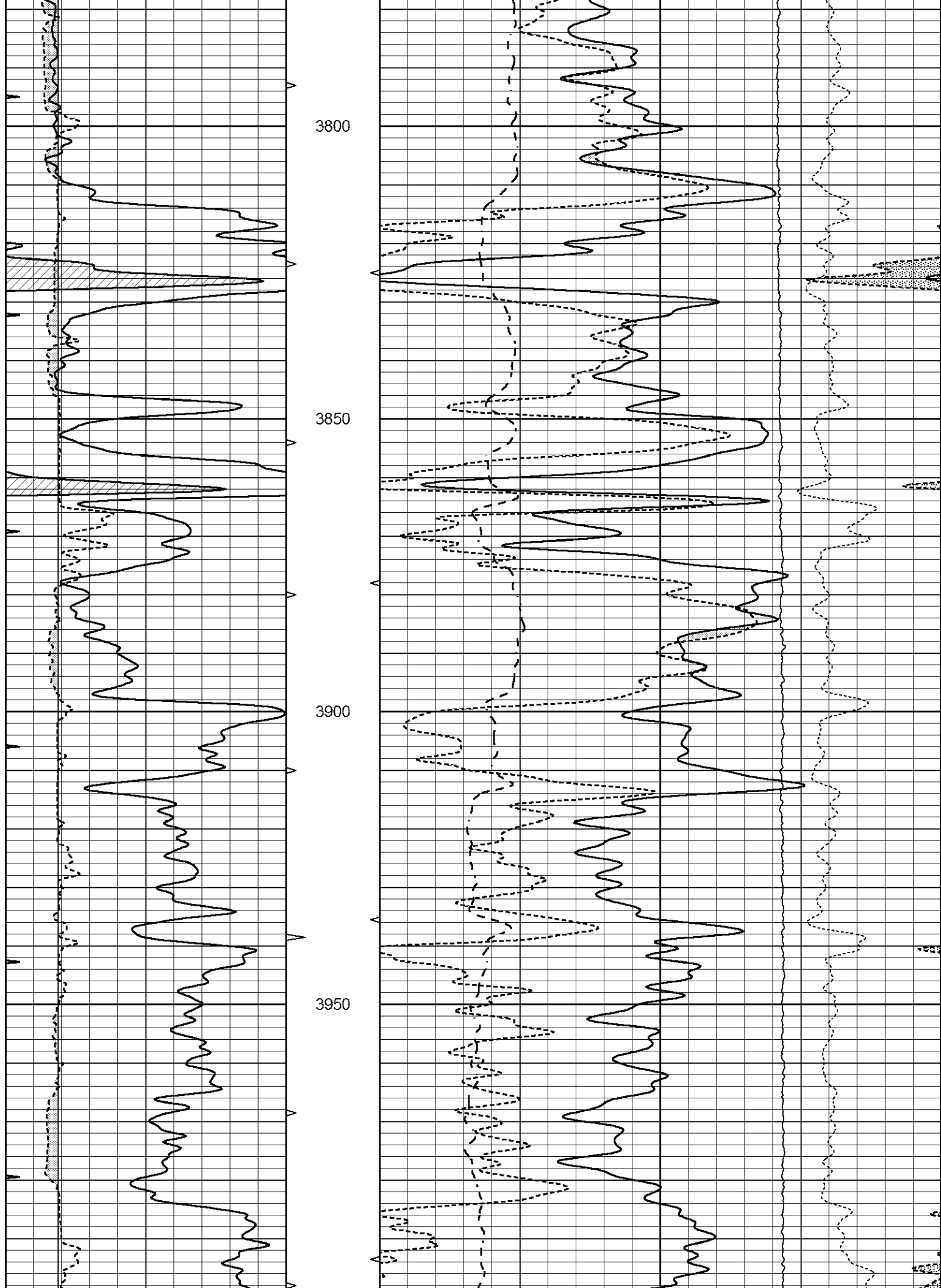
3250

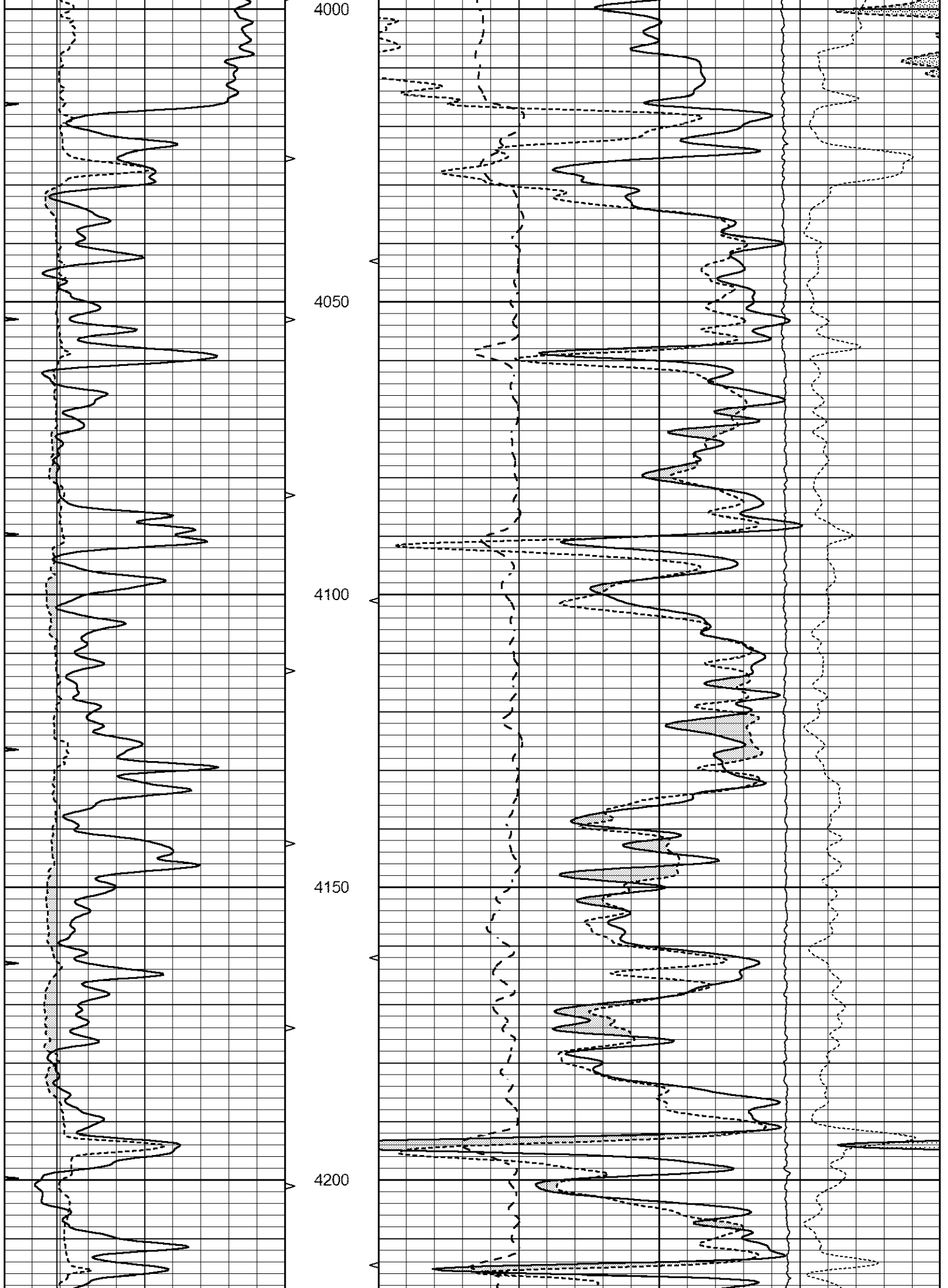
3300

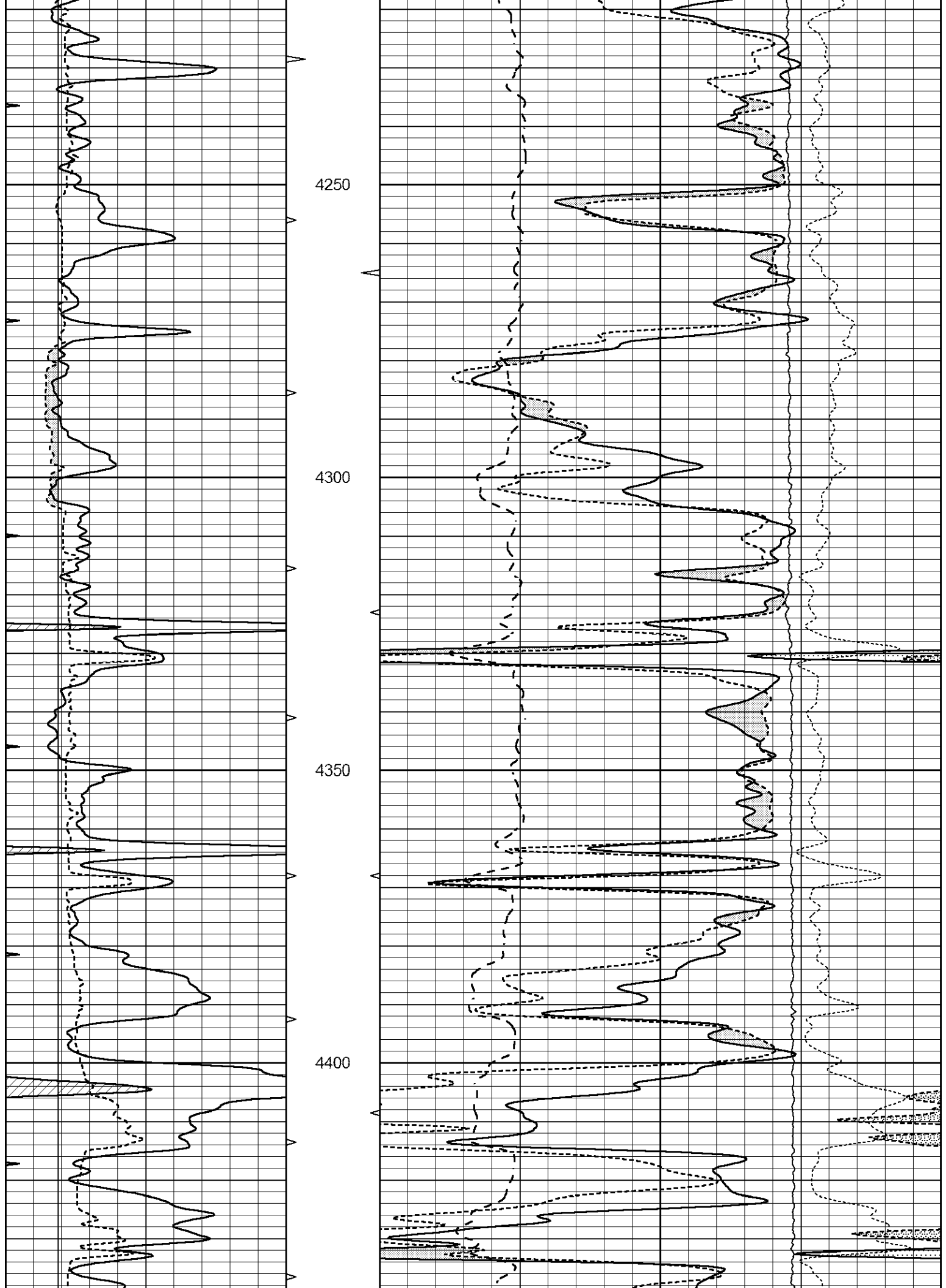


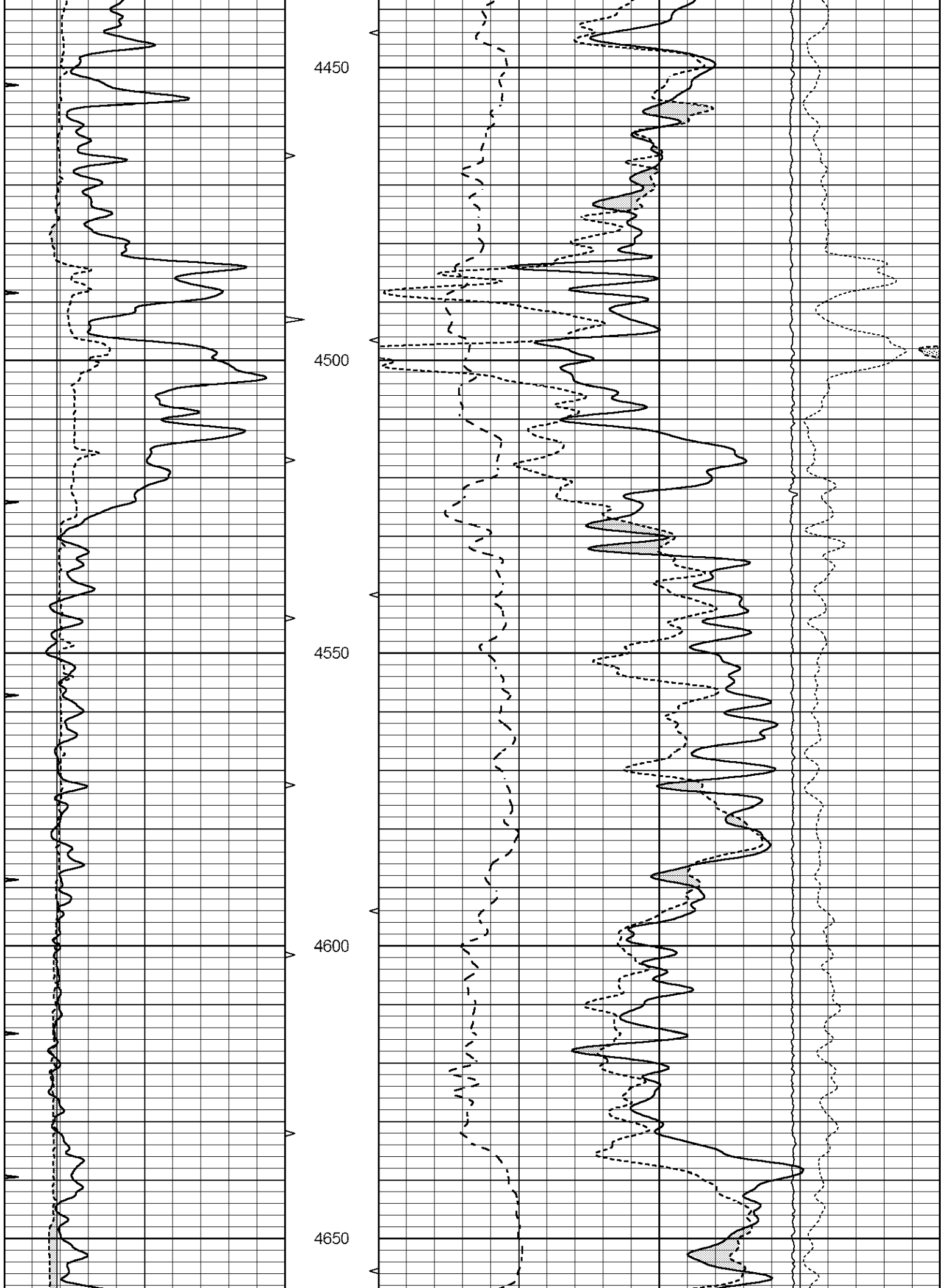


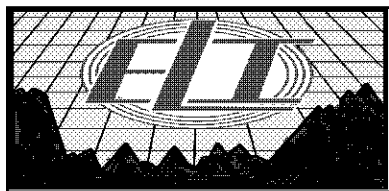
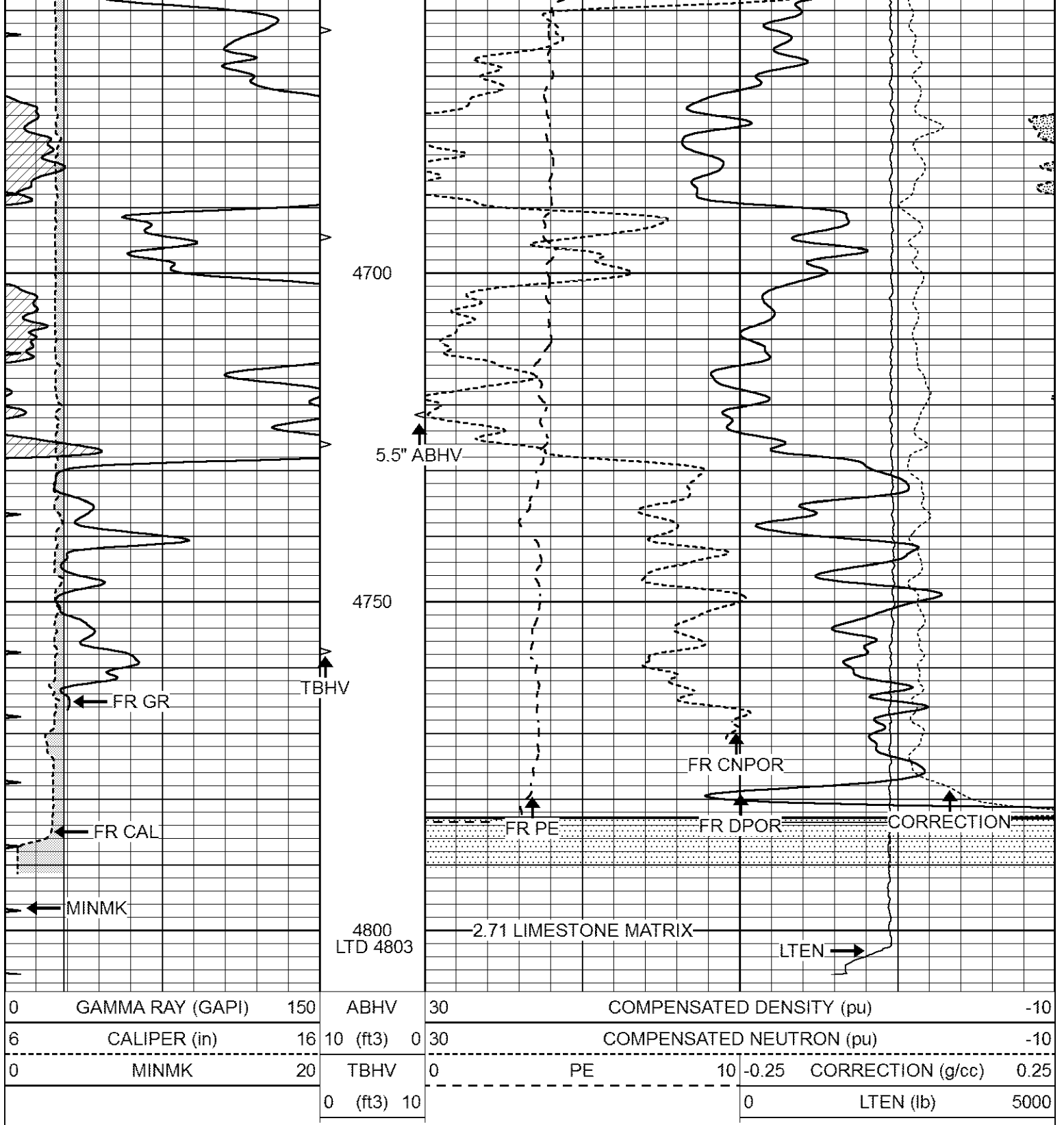










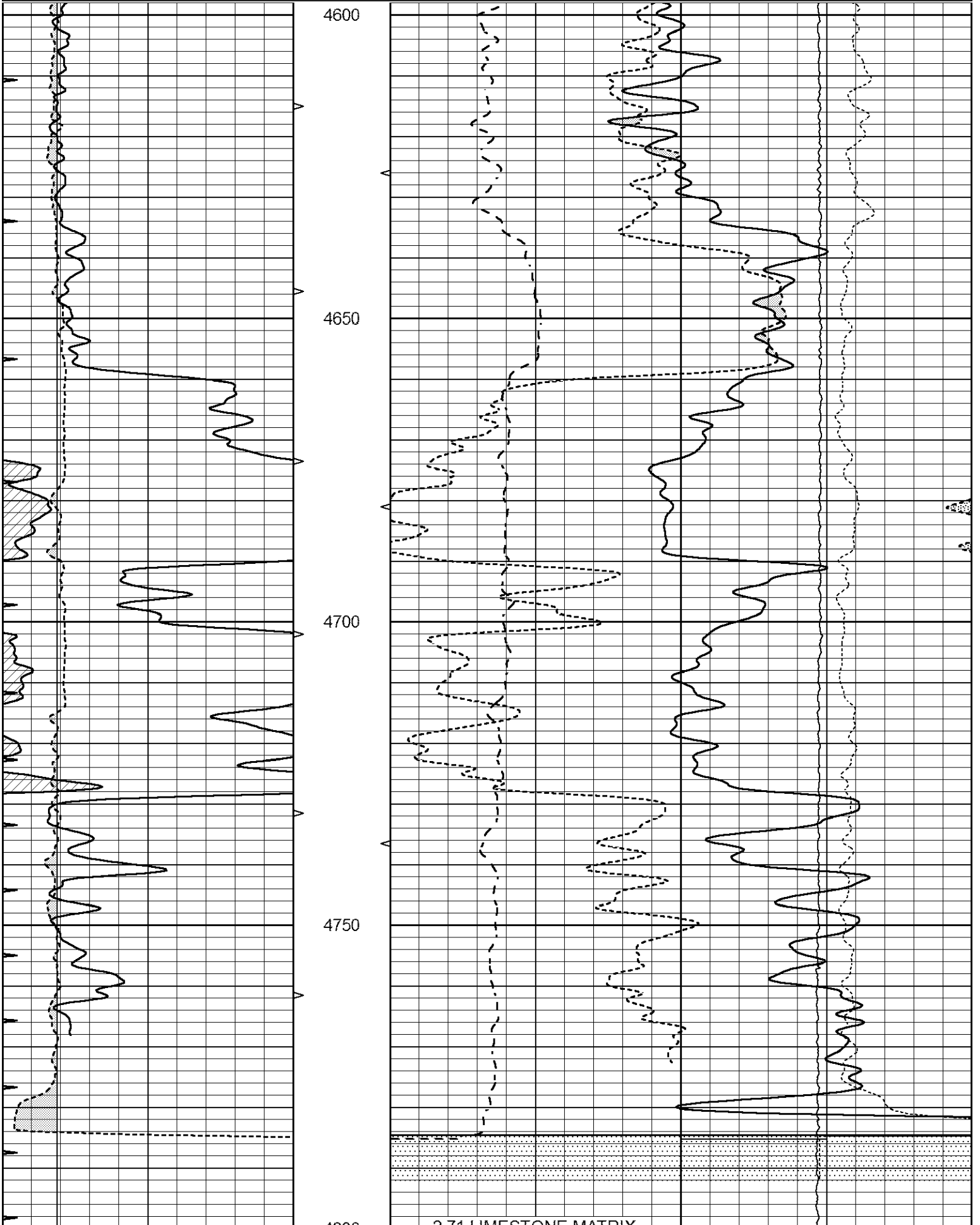


# LIMESTONE MATRIX REPEAT

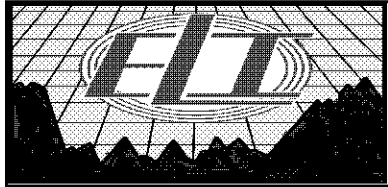
Database File 7781pe.db  
 Dataset Pathname pass2LSR  
 Presentation Format \_ldt\_neu  
 Dataset Creation Fri Oct 13 00:13:58 2023  
 Charted by Depth in Feet scaled 1:240

0	GAMMA RAY (GAPI)	150	ABHV	30	COMPENSATED DENSITY (pu)	-10
---	------------------	-----	------	----	--------------------------	-----

6	CALIPER (in)	16	10 (ft3)	0	30	COMPENSATED NEUTRON (pu)			-10
0	MINMK	20	TBHV	0	PE	10	-0.25	CORRECTION (g/cc)	0.25
			0 (ft3)	10			0	LTEN (lb)	5000



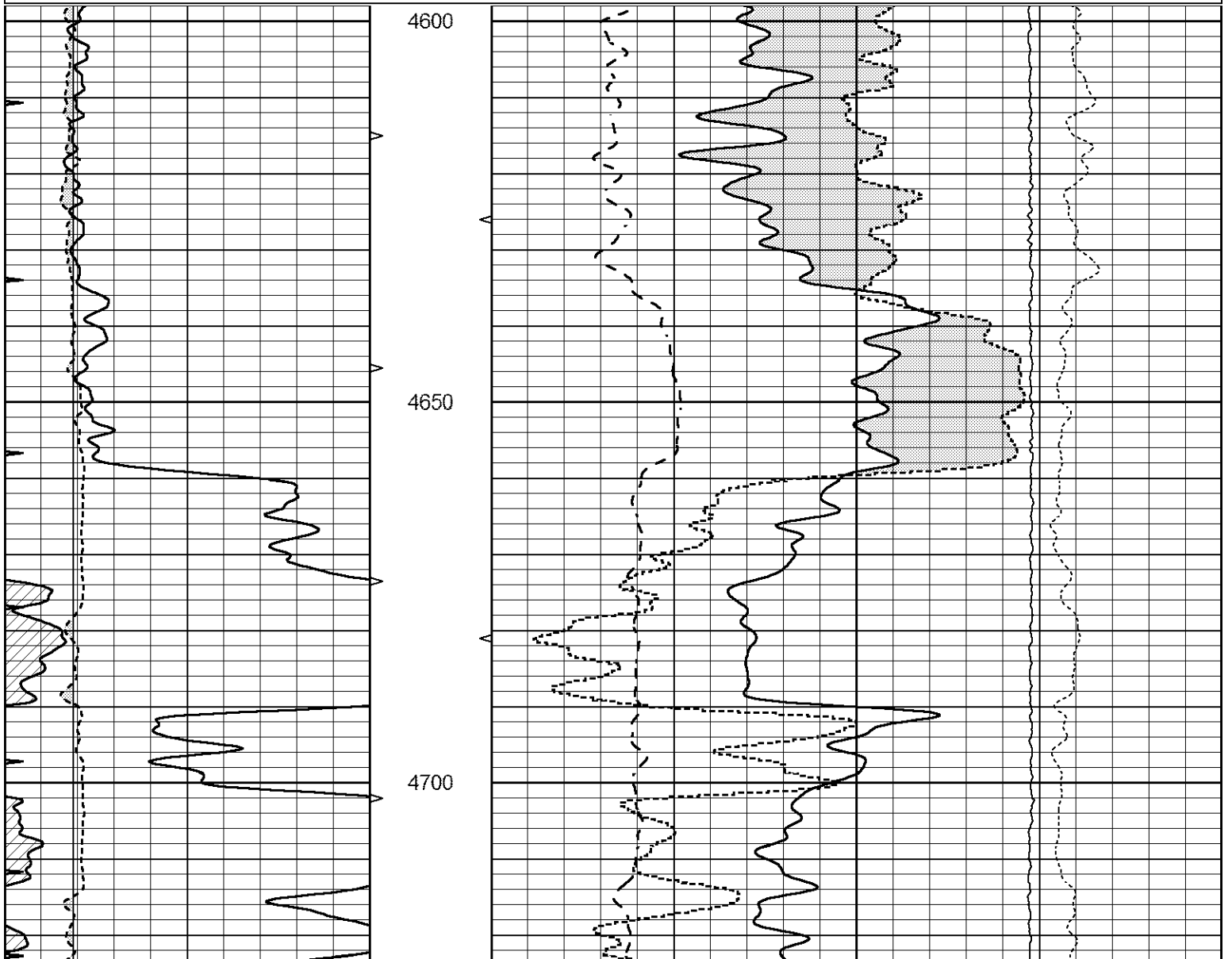
0	GAMMA RAY (GAPI)	150	ABHV	30	COMPENSATED DENSITY (pu)	-10
6	CALIPER (in)	16	10 (ft3)	0 30	COMPENSATED NEUTRON (pu)	-10
0	MINMK	20	TBHV	0	PE	10 -0.25 CORRECTION (g/cc) 0.25
			0 (ft3)	10		0 LTEN (lb) 5000

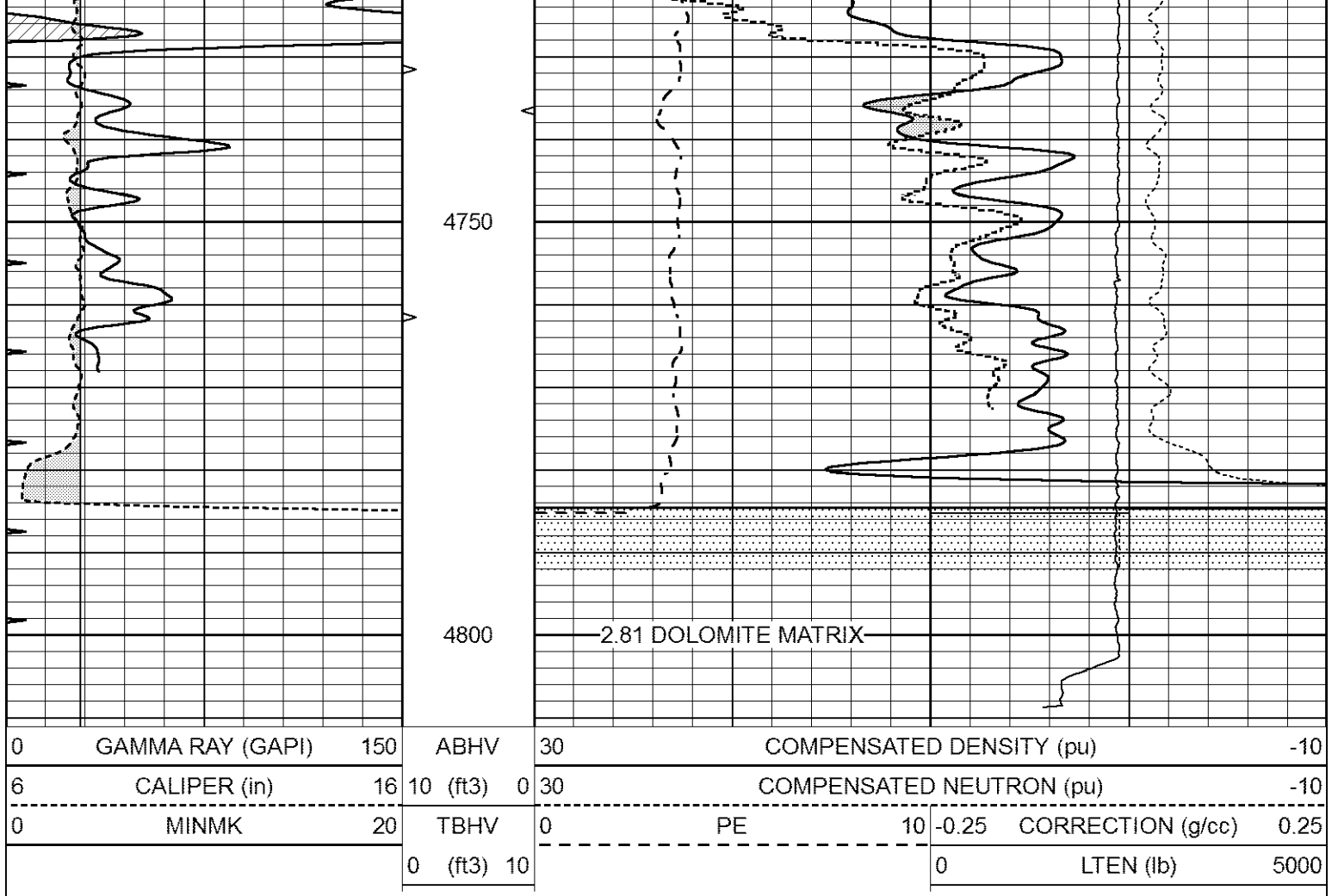


# DOLOMITE MATRIX REPEAT

Database File 7781pe.db  
 Dataset Pathname pass2DLOR  
 Presentation Format \_ldt\_neu  
 Dataset Creation Fri Oct 13 00:16:58 2023  
 Charted by Depth in Feet scaled 1:240

0	GAMMA RAY (GAPI)	150	ABHV	30	COMPENSATED DENSITY (pu)	-10
6	CALIPER (in)	16	10 (ft3)	0 30	COMPENSATED NEUTRON (pu)	-10
0	MINMK	20	TBHV	0	PE	10 -0.25 CORRECTION (g/cc) 0.25
			0 (ft3)	10		0 LTEN (lb) 5000





### Calibration Report

Database File 7781pe.db  
 Dataset Pathname pass3PE  
 Dataset Creation Fri Oct 13 02:20:52 2023

### Dual Induction Calibration Report

Serial-Model: FW1410-55-Probe  
 Surface Cal Performed: Sat Jul 29 01:57:42 2023  
 Downhole Cal Performed: Tue Feb 19 11:44:24 2019  
 After Survey Verification Performed: Tue Feb 19 11:44:27 2019

#### Surface Calibration

Loop:	Readings			References			Results	
	Air	Loop		Air	Loop		m	b
Deep	0.011	0.656	V	1.000	400.000	mmho/m	565.000	-7.000
Medium	-0.000	0.731	V	1.000	464.000	mmho/m	530.000	-12.000
Internal:	Zero	Cal		Zero	Cal		m	b
Deep	0.007	0.649	V	0.000	400.000	mmho/m	623.784	-4.595
Medium	0.004	0.743	V	0.000	464.000	mmho/m	627.284	-2.251

#### Downhole Calibration

	Readings			References			Results	
	Zero	Cal		Zero	Cal		m'	b'
Deep	-0.824	395.917	mmho/m	-0.976	397.550	mmho/m	1.004	-0.149
Medium	3.565	471.327	mmho/m	3.468	471.590	mmho/m	1.001	-0.099
U3		7.503	V		1500.000	Ohm m		

LL3	7.503	V	1500.000	Ohm-m
	0.001	V	20.000	Ohm-m
	-7.481	V	3745.000	mmho-m

After Survey Verification								
	Readings			Targets			Results	
	Zero	Cal		Zero	Cal		m'	b'
Deep	0.000	0.000	mmho/m	-0.824	395.917	mmho/m	1.000	0.000
Medium	0.000	0.000	mmho/m	3.565	471.327	mmho/m	1.000	0.000
LL3		0.000	Ohm-m		1500.000	Ohm-m		
		0.000	Ohm-m		20.000	Ohm-m		
		0.000	mmho-m		3745.000	mmho-m		

Litho Density Calibration Report  
Serial: 140704  
Model: V4\_10P  
Source Number: 74GBq-19

Master Calibration					Performed: Fri May 12 10:26:47 2023			
	Background	Aluminum	Magnesium					
Window 1	521.46	5212.91	23528.37	cps				
Window 2	43.81	1175.90	6160.42	cps				
Window 4	226.45	1217.97	4891.35	cps				
Window 5	519.17	8959.34	17037.10	cps				
Window 6	39.35	1453.85	2926.68	cps				
Window 8	253.66	2919.24	5361.51	cps				
Bulk Density	-	2.6020	1.6830	g/cc				
Pe	-	3.0000	2.5070	b/e				
LS Alpha:	: -1.7699	SS Alpha:	: -0.7448	LS CPE:	: 1.1844			
LS Beta:	: 101708.6271	SS Beta:	: 19263.5258	SS CPE:	: 1.5835			

Before Survey Background Counts Verification				Performed: Wed Dec 31 18:00:00 1969				
Window 1	0.00	cps						
Window 2	0.00	cps						
Window 4	0.00	cps						
Window 5	0.00	cps						
Window 6	0.00	cps						
Window 8	0.00	cps						

After Survey Background Counts Verification				Performed: Wed Dec 31 18:00:00 1969				
Window 1	0.00	cps						
Window 2	0.00	cps						
Window 4	0.00	cps						
Window 5	0.00	cps						
Window 6	0.00	cps						
Window 8	0.00	cps						

Lithodensity Caliper Calibration						Performed: Fri May 12 10:26:47 2023		
Results	Readings		References (in)		Gain	Offset		
	Low	High	Low	High				
	1891.2	737.1	6.0	16.0	-0.0	23.4		

Before Survey Caliper Verification				Performed:				
------------------------------------	--	--	--	------------	--	--	--	--

	Reference	Reading
Caliper (in)	_____	_____

After Survey Caliper Verification	Performed:	
	Reference	Reading
Caliper (in)	_____	_____

Compensated Neutron Calibration Report

Serial Number:	080621PMC
Tool Model:	NABORS

PRE-SURVEY VERIFICATION				
Detector	Readings	Measured	Target	
Short Space	cps			
Long Space	cps	pu		pu

POST-SURVEY VERIFICATION				
Detector	Readings	Measured	Target	
Short Space	cps			
Long Space	cps	pu		pu

Gamma Ray Calibration Report

Serial Number:	7	
Tool Model:	Probe1	
Performed:	Tue Aug 01 20:36:29 2023	
Calibrator Value:	1.0	GAPI
Background Reading:	0.0	cps
Calibrator Reading:	1.0	cps
Sensitivity:	0.4400	GAPI/cps