



# DUAL INDUCTION LOG

Company MERIDIAN ENERGY, INC.  
 Well SIMON SAYS UNIT #1  
 Field CLAP YOUR HANDS  
 County RAWLINS  
 State KANSAS

Company MERIDIAN ENERGY, INC.  
 Well SIMON SAYS UNIT #1  
 Field CLAP YOUR HANDS  
 County RAWLINS State KANSAS

Location: API #: 15-153-21299-0000  
 1460' FSL & 2020' FEL  
 SE - SW - NW - SE  
 SEC 7 TWP 5S RGE 33W  
 Permanent Datum GROUND LEVEL Elevation 3171  
 Log Measured From KELLY BUSHING 5' A.G.L.  
 Drilling Measured From KELLY BUSHING  
 Other Services  
 CDL/CNL  
 MEL/SON  
 Elevation  
 K.B. 3176  
 D.F. 3174  
 G.L. 3171

Date	11/14/22
Run Number	ONE
Depth Driller	4735
Depth Logger	4734
Bottom Logged Interval	4732
Top Log Interval	00
Casing Driller	8 5/8"@308'
Casing Logger	308
Bit Size	7 7/8"
Type Fluid in Hole	CHEMICAL MUD
Density / Viscosity	9.4/53
pH / Fluid Loss	11.0/8.0
Source of Sample	FLOWLINE
Rm @ Meas. Temp	1.20@57F
Rmf @ Meas. Temp	.900@57F
Rmc @ Meas. Temp	1.44@57F
Source of Rmf / Rmc	.556@123F
Rm @ BHT	1.08@57F
Time Circulation Stopped	2.5 HOURS
Time Logger on Bottom	10:00 P.M.
Maximum Recorded Temperature	123F
Equipment Number	8916
Location	HAYS, KANSAS
Recorded By	JEFF LUEBBERS
Witnessed By	WESTON LAFON

<<< Fold Here >>>

All interpretations are opinions based on inferences from electrical or other measurements and we cannot and do not guarantee the accuracy or correctness of any interpretation, and we shall not, except in the case of gross or willful negligence on our part, be liable or responsible for any loss, costs, damages, or expenses incurred or sustained by anyone resulting from any interpretation made by any of our officers, agents or employees. These interpretations are also subject to our general terms and conditions set out in our current Price Schedule.

### Comments

THANK YOU FOR USING ELI WIRELINE, HAYS, KS. (785) 628-6395  
 DIRECTIONS:  
 COLBY, KS., 16N. ON HWY 25 TO "RD. E", 1/4W., N. INTO

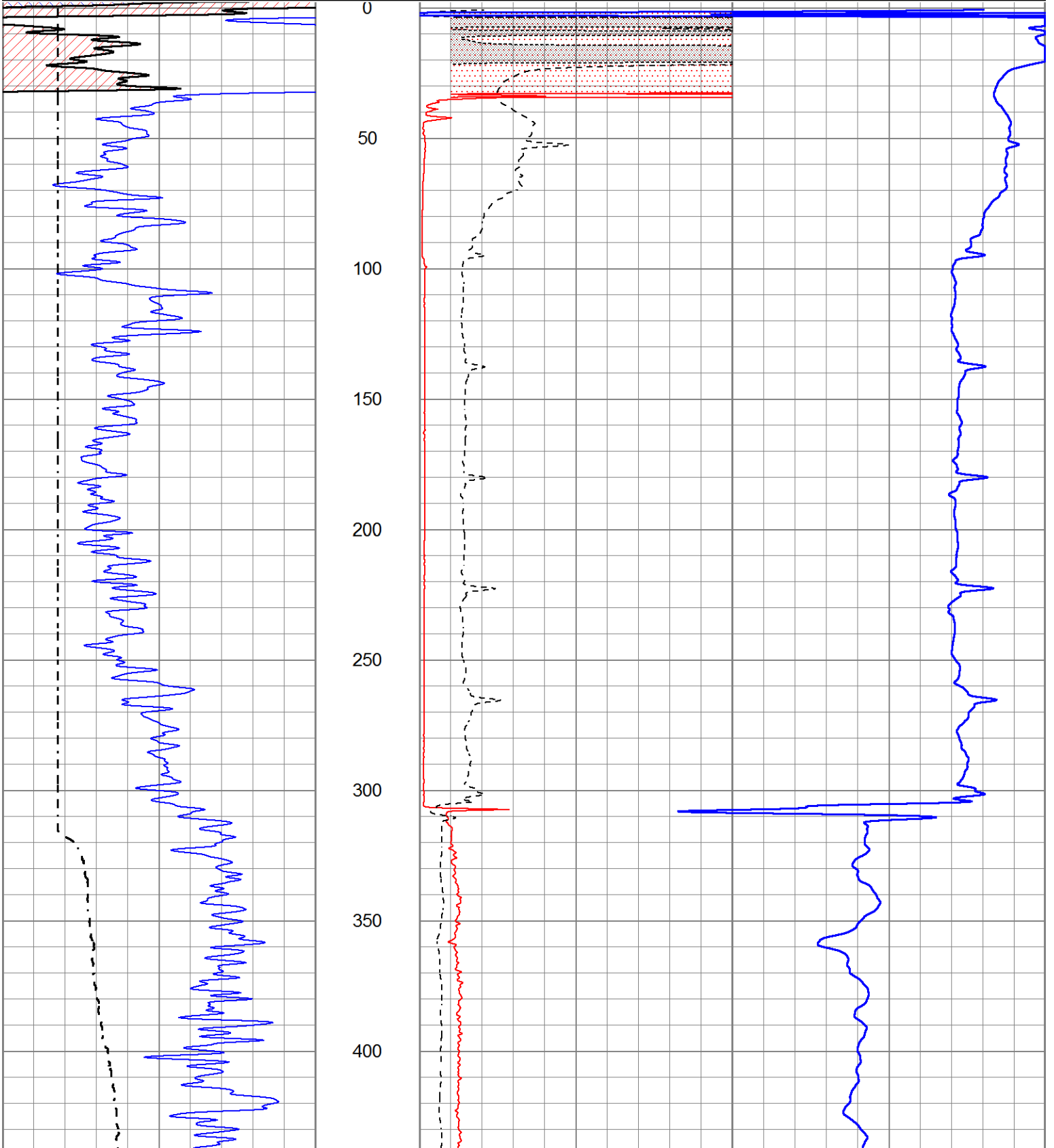


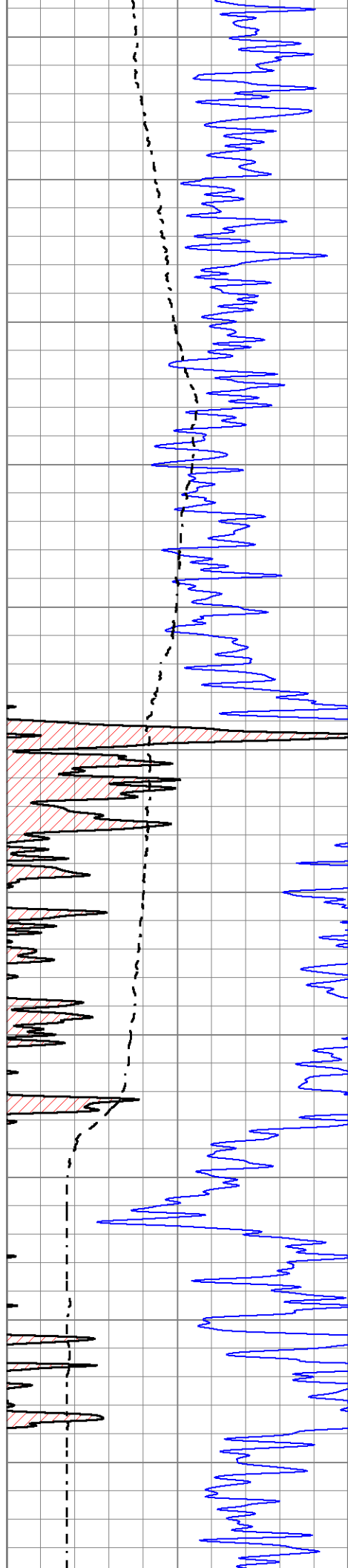
# MAIN SECTION

Database File 6721ddn.db  
 Dataset Pathname pass3.1M  
 Presentation Format \_dil2  
 Dataset Creation Mon Nov 14 23:46:13 2022  
 Charted by Depth in Feet scaled 1:600

0 Gamma Ray (GAPI) 150  
 -100 SP (mV) 100

1000 CILD (mmho/m) 0  
 0 RLL3 (Ohm-m) 50  
 0 RILD (Ohm-m) 50  
 50 RILD X10 (Ohm-m) 500  
 50 RLL3 X10 (Ohm-m) 500





450

500

550

600

650

700

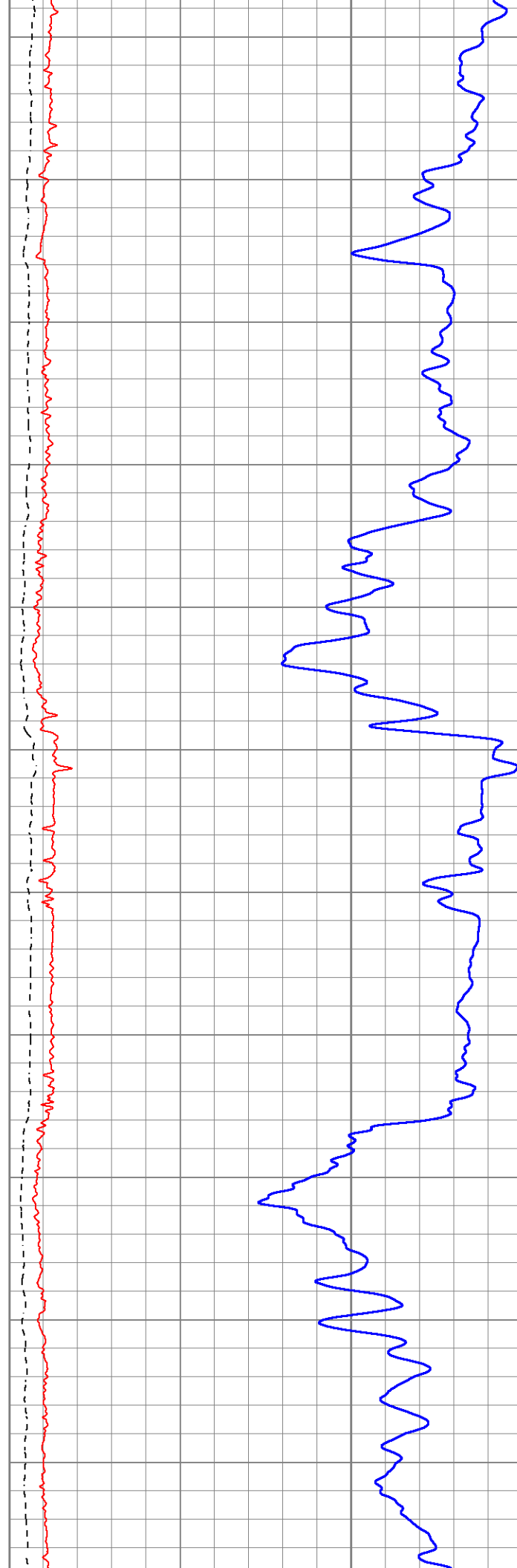
750

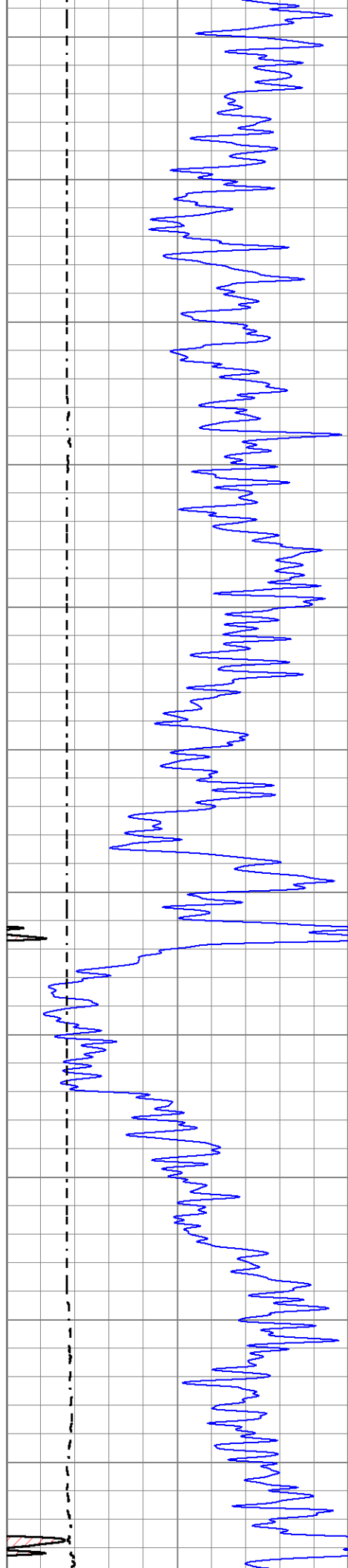
800

850

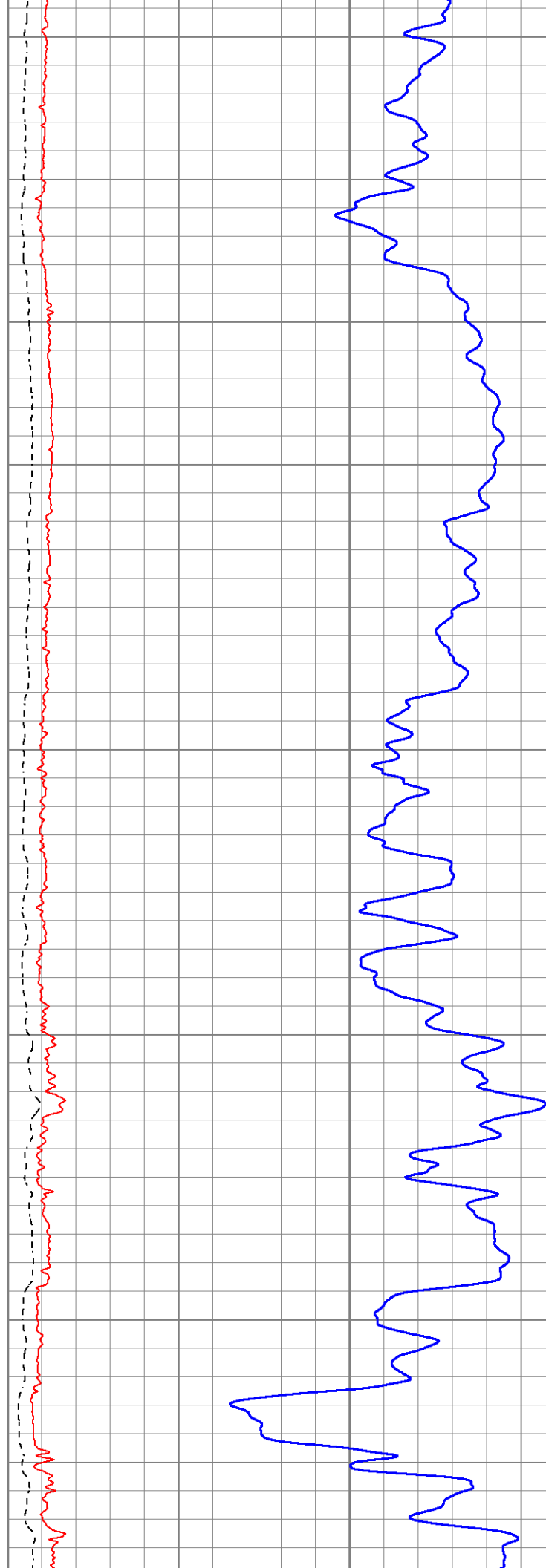
900

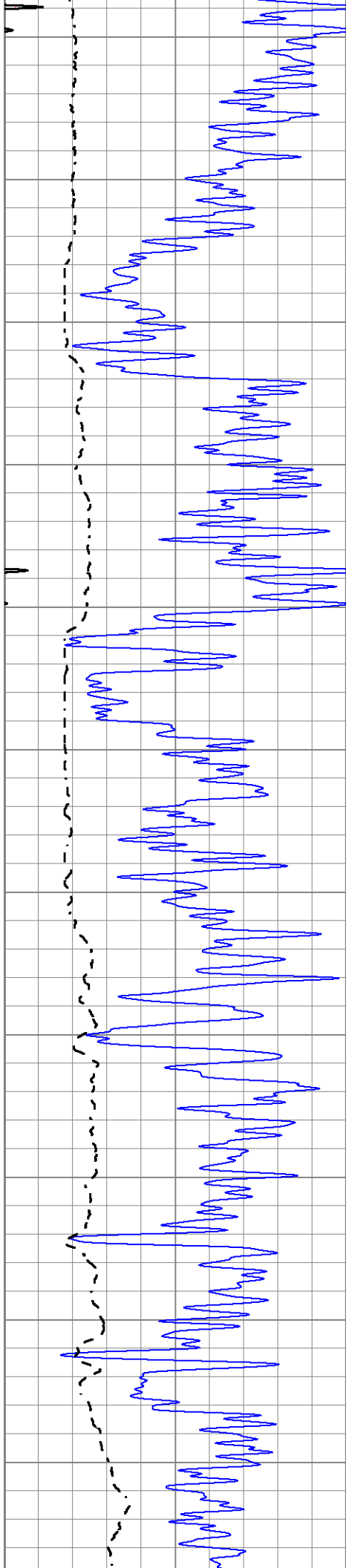
950



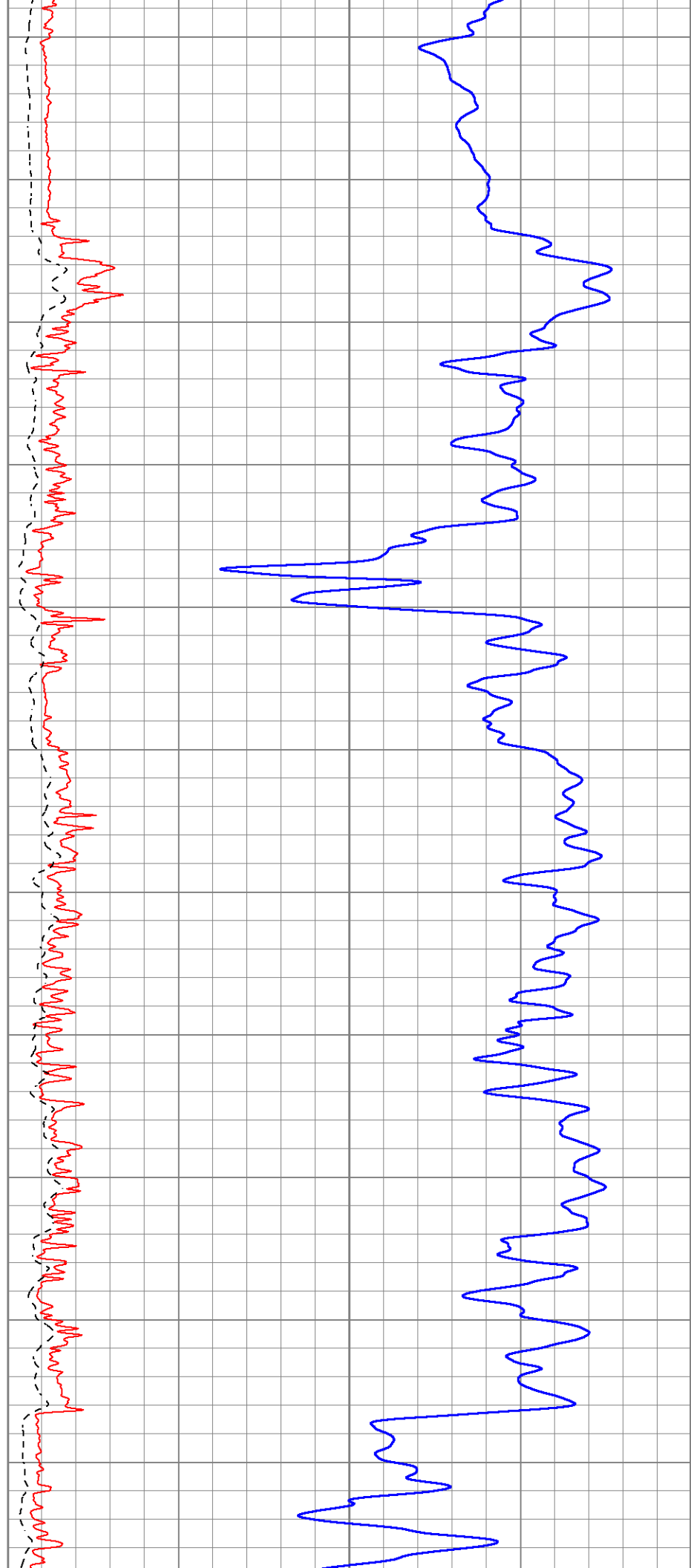


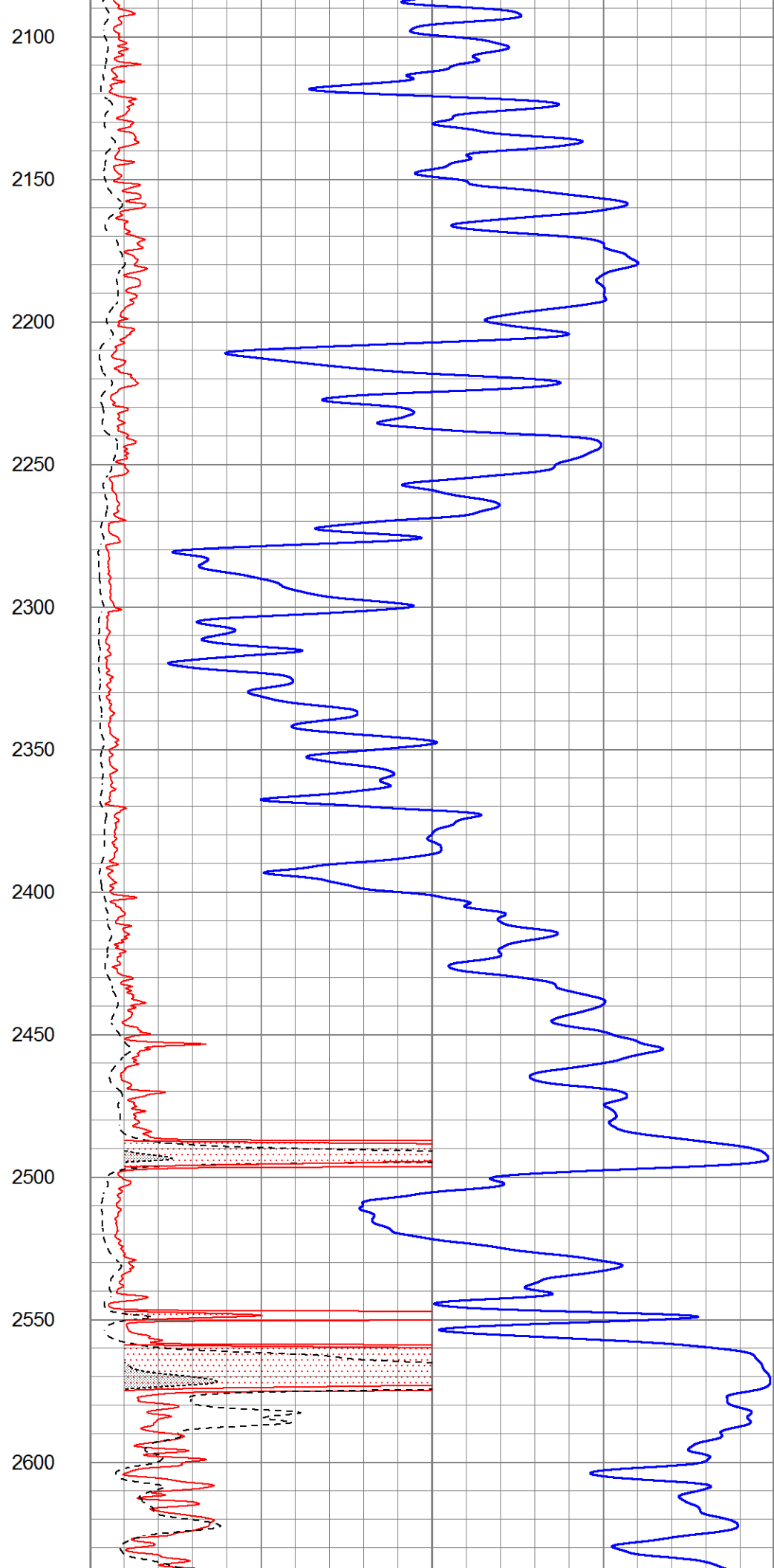
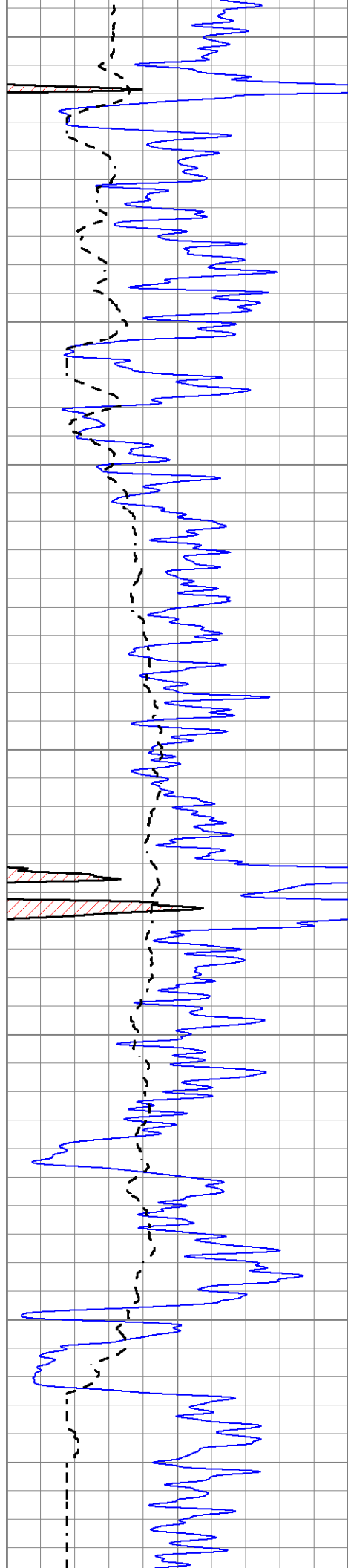
1000  
1050  
1100  
1150  
1200  
1250  
1300  
1350  
1400  
1450  
1500

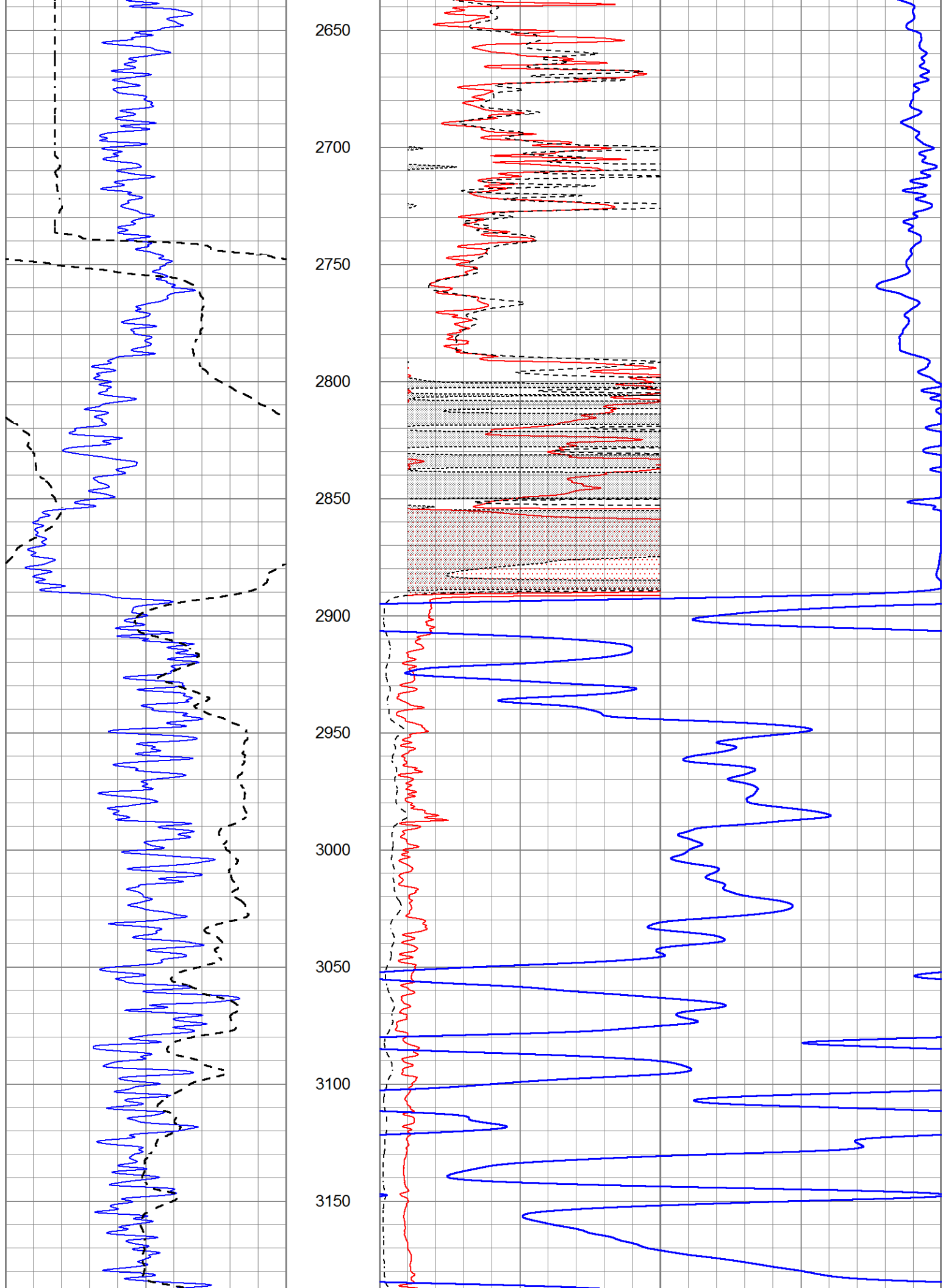


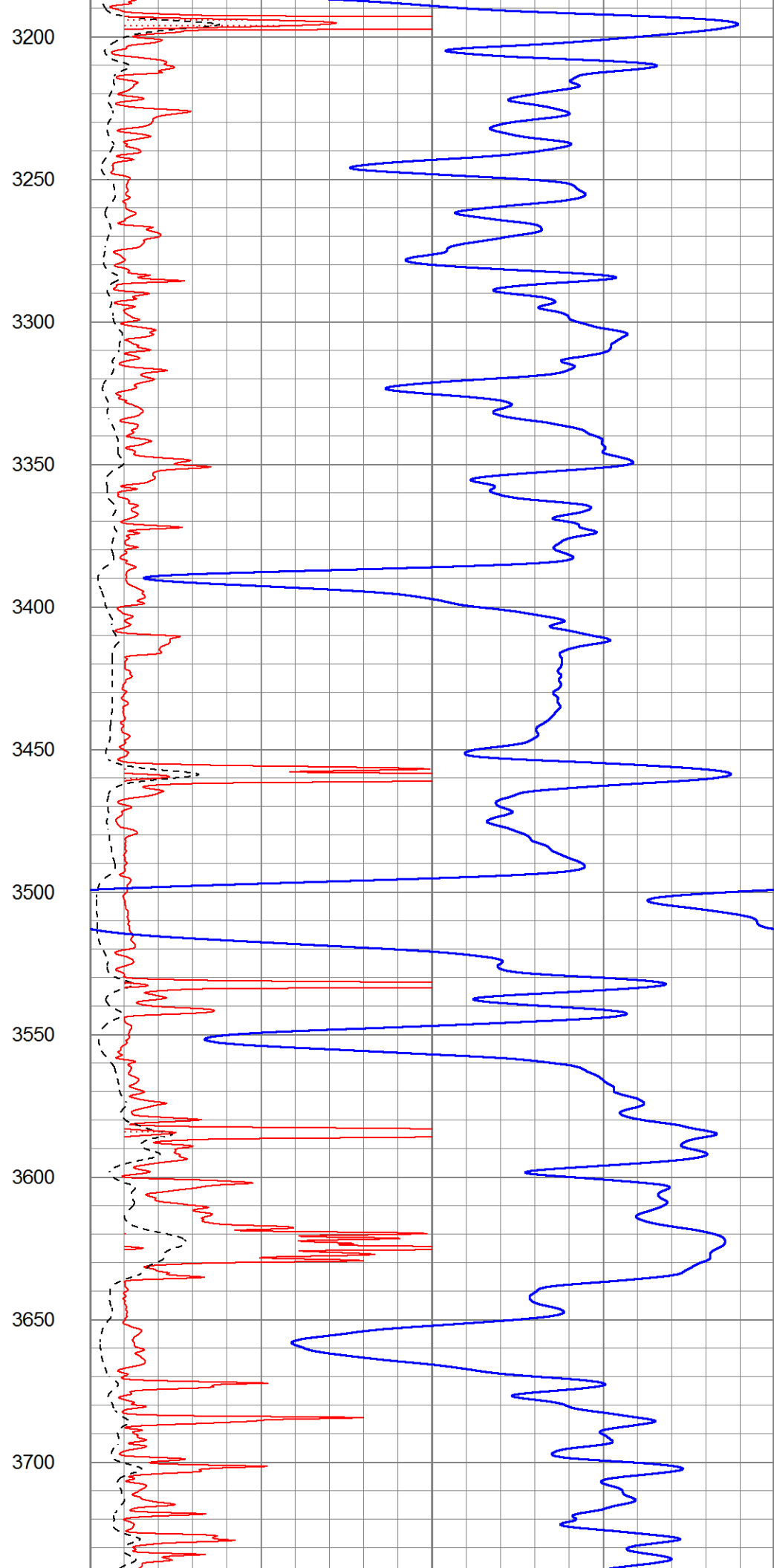
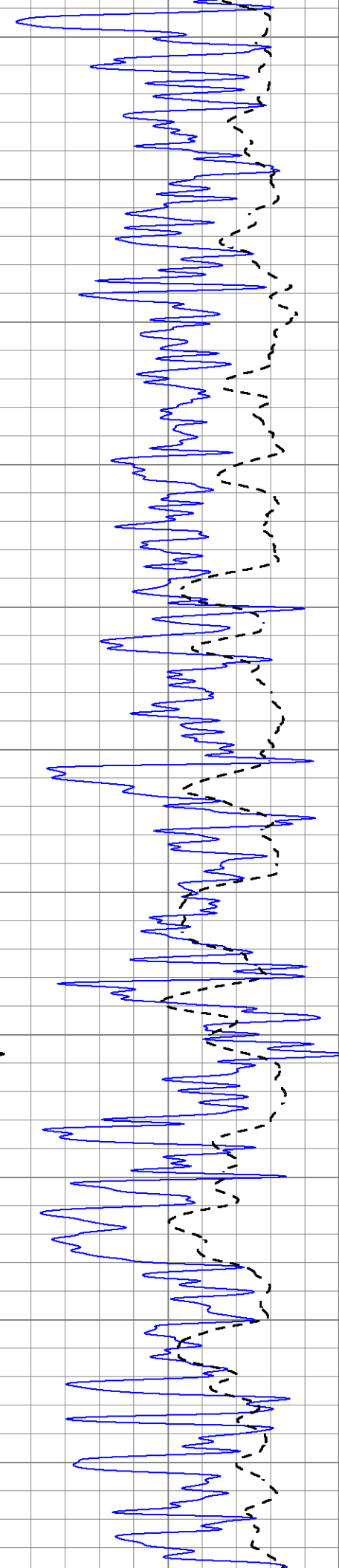


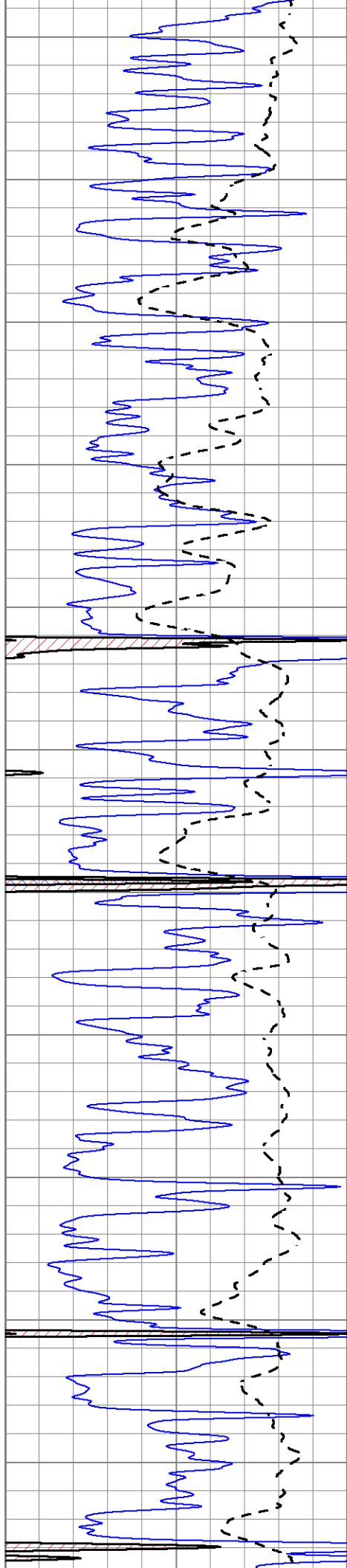
1550  
1600  
1650  
1700  
1750  
1800  
1850  
1900  
1950  
2000  
2050











3750

3800

3850

3900

3950

4000

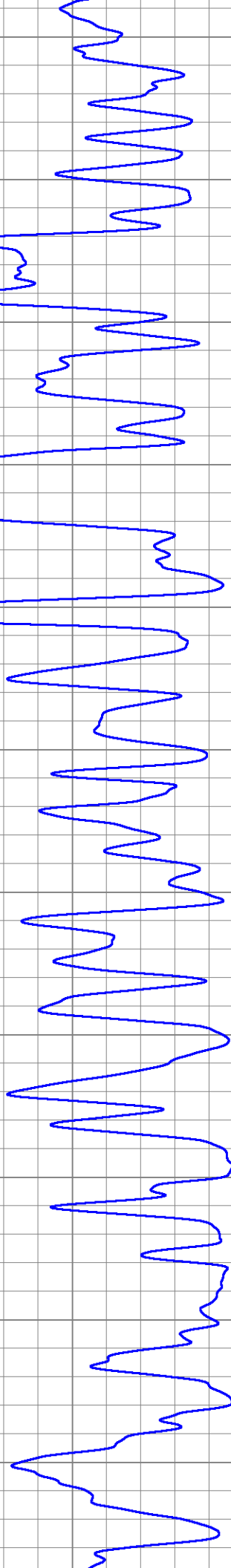
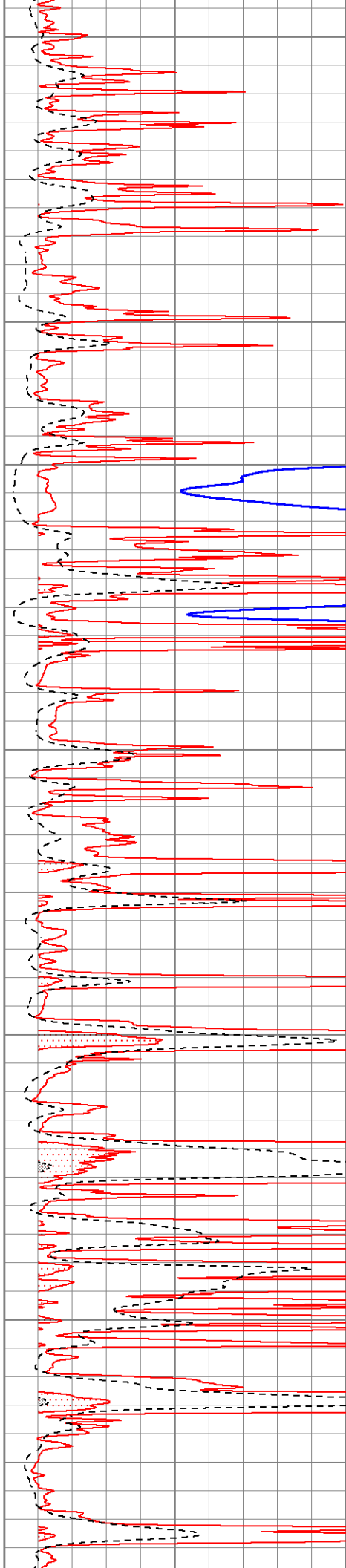
4050

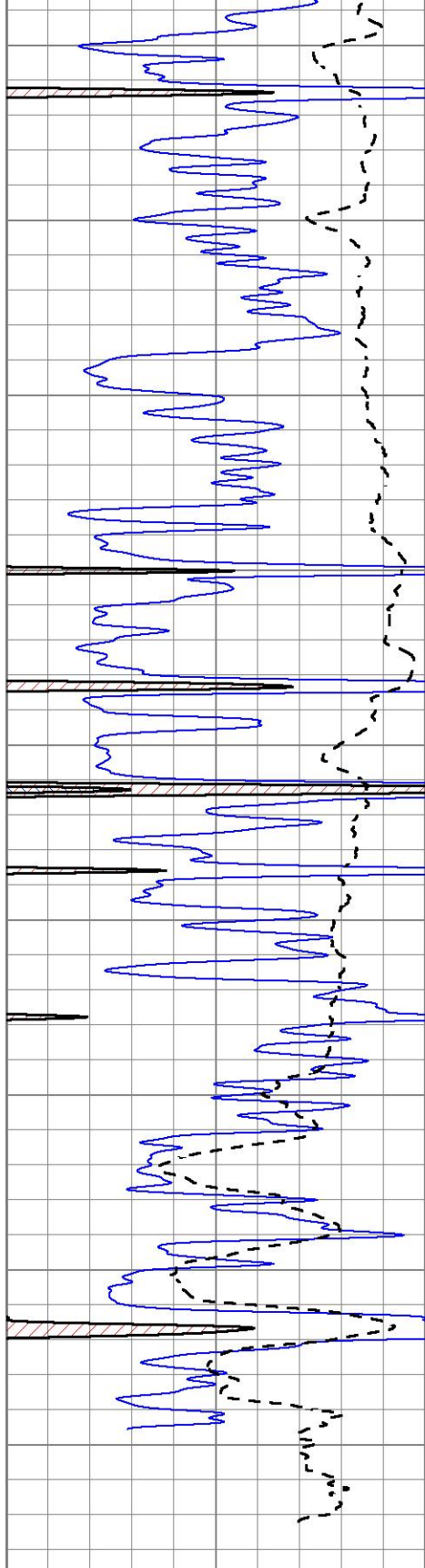
4100

4150

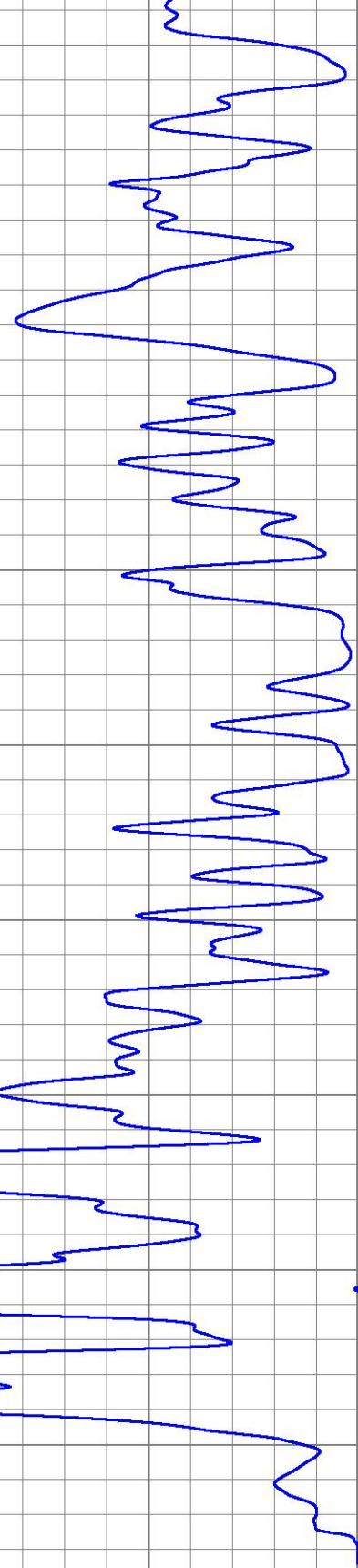
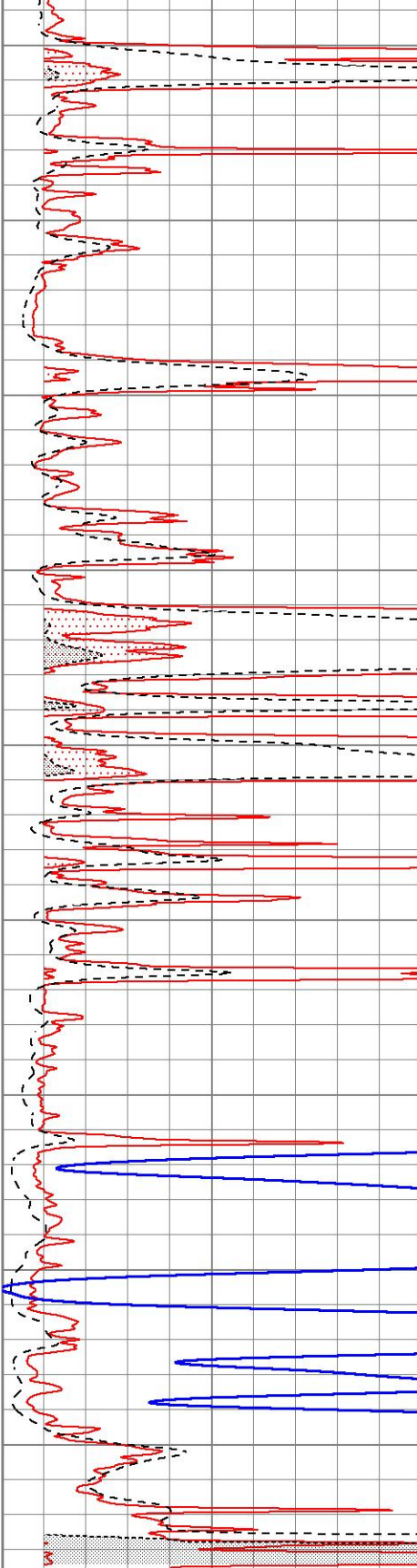
4200

4250





4300  
4350  
4400  
4450  
4500  
4550  
4600  
4650  
4700



0 Gamma Ray (GAPI) 150  
-100 SP (mV) 100

1000 CILD (mmho/m) 0  
0 RLL3 (Ohm-m) 50  
0 RILD (Ohm-m) 50  
50 RILD X10 (Ohm-m) 500  
50 RLL3 X10 (Ohm-m) 500



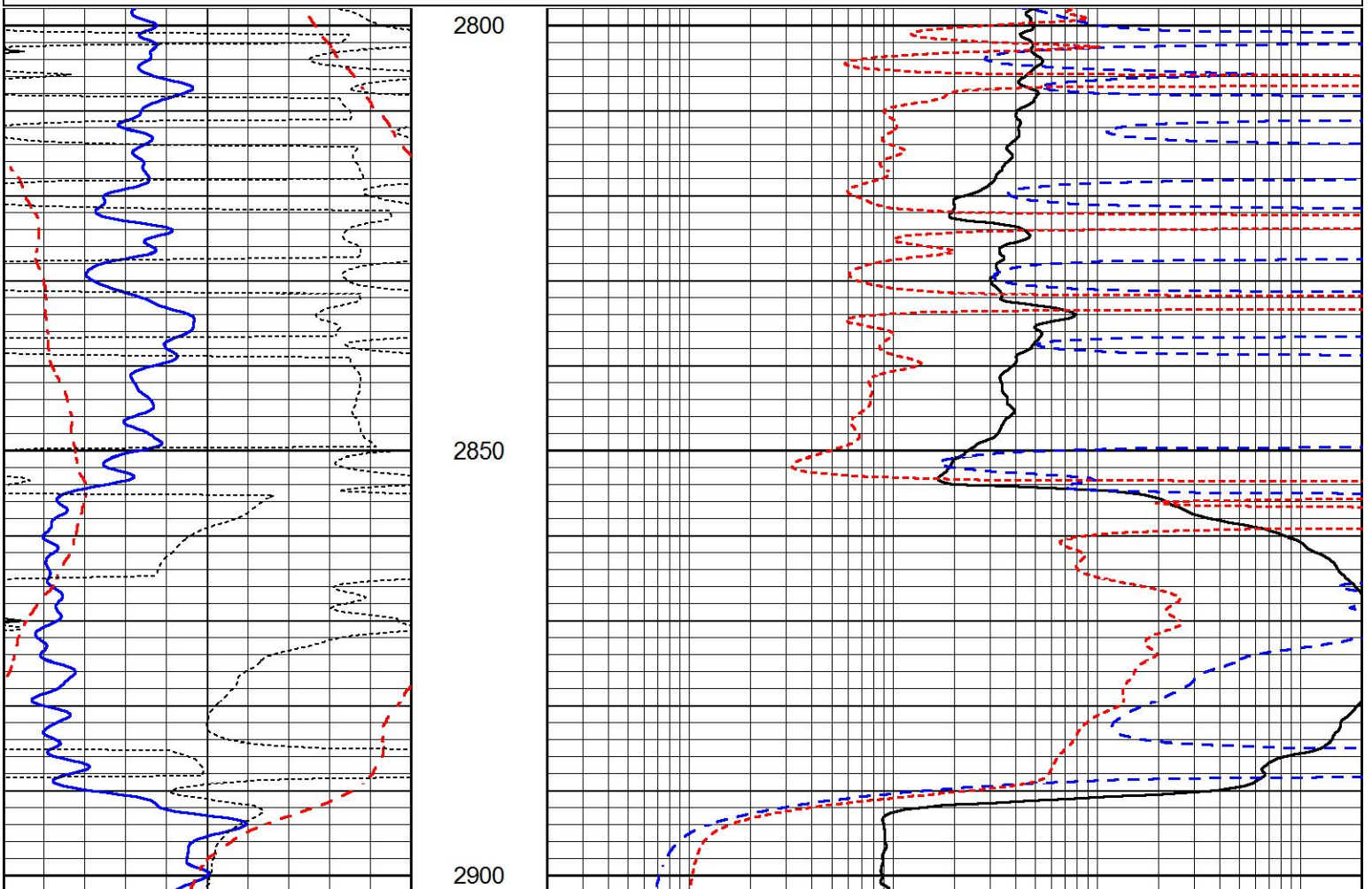
ANALYDRITE

# ANHYDRITE

Database File 6721ddn.db  
 Dataset Pathname pass3.1A  
 Presentation Format \_dil  
 Dataset Creation Mon Nov 14 23:47:43 2022  
 Charted by Depth in Feet scaled 1:240

0	GAMMA RAY (GAPI)	150
-100	SP (mV)	100
-250	Rxo/Rt	50
0	MINMK	20

0.2	SHALLOW GUARD (Ohm-m)	2000
0.2	DEEP INDUCTION (Ohm-m)	2000
0.2	MEDIUM INDUCTION (Ohm-m)	2000



0	GAMMA RAY (GAPI)	150
-100	SP (mV)	100
-250	Rxo/Rt	50
0	MINMK	20

0.2	SHALLOW GUARD (Ohm-m)	2000
0.2	DEEP INDUCTION (Ohm-m)	2000
0.2	MEDIUM INDUCTION (Ohm-m)	2000

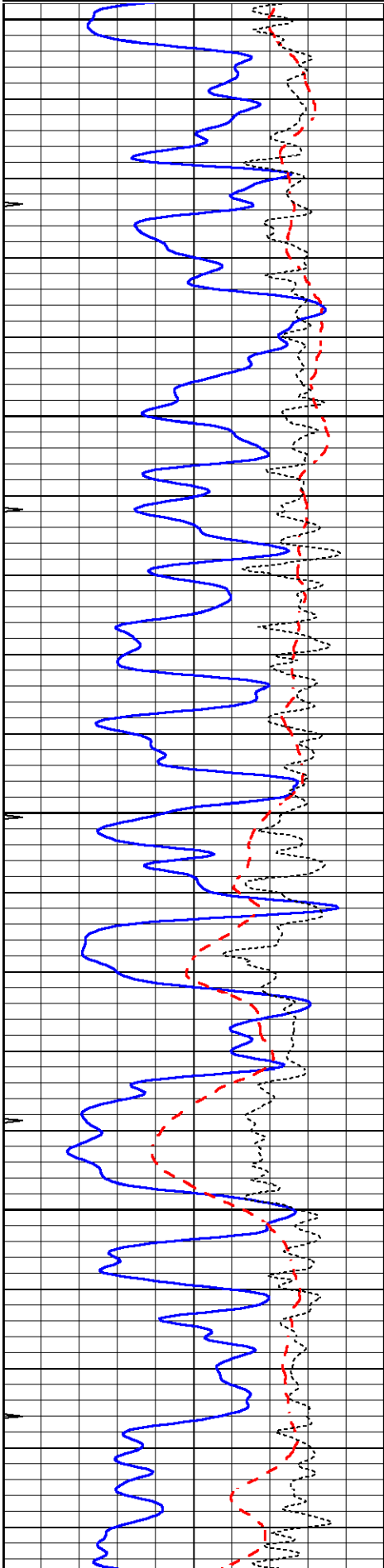


# MAIN SECTION

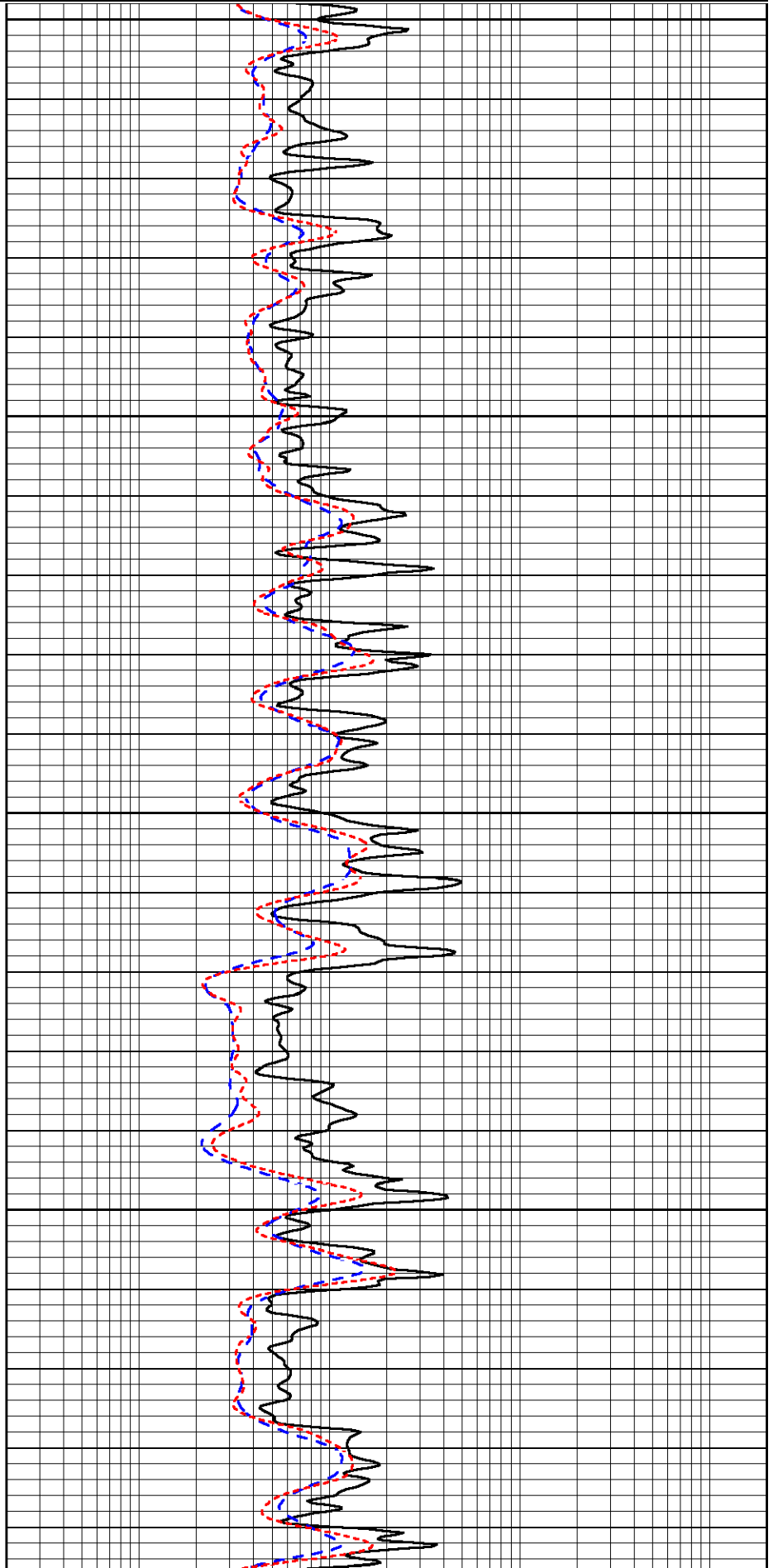
Database File 6721ddn.db  
 Dataset Pathname pass3.1M  
 Presentation Format \_dil  
 Dataset Creation Mon Nov 14 23:46:13 2022  
 Charted by Depth in Feet scaled 1:240

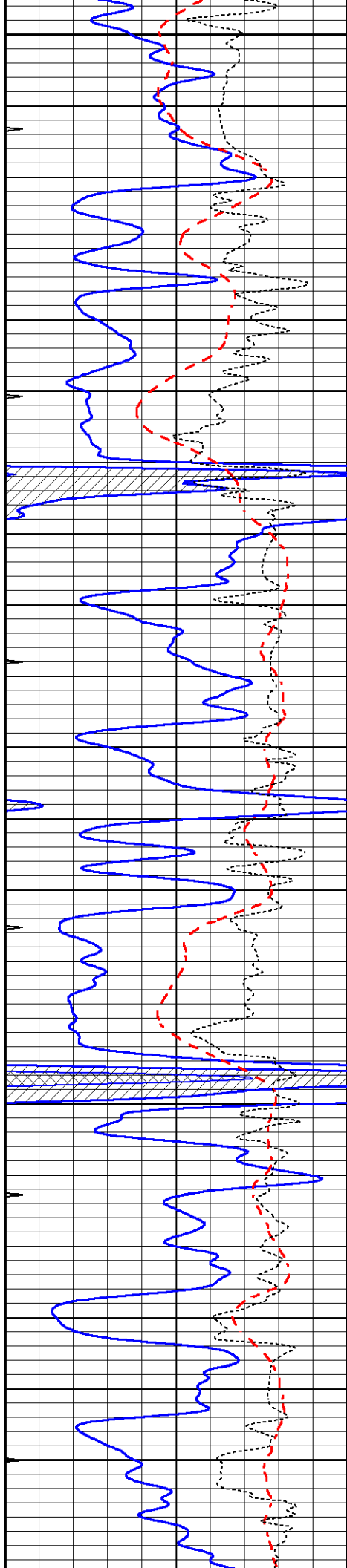
0	GAMMA RAY (GAPI)	150
-100	SP (mV)	100
-250	Rxo/Rt	50
0	MINMK	20

0.2	SHALLOW GUARD (Ohm-m)	2000
0.2	DEEP INDUCTION (Ohm-m)	2000
0.2	MEDIUM INDUCTION (Ohm-m)	2000



3700  
3750  
3800  
3850





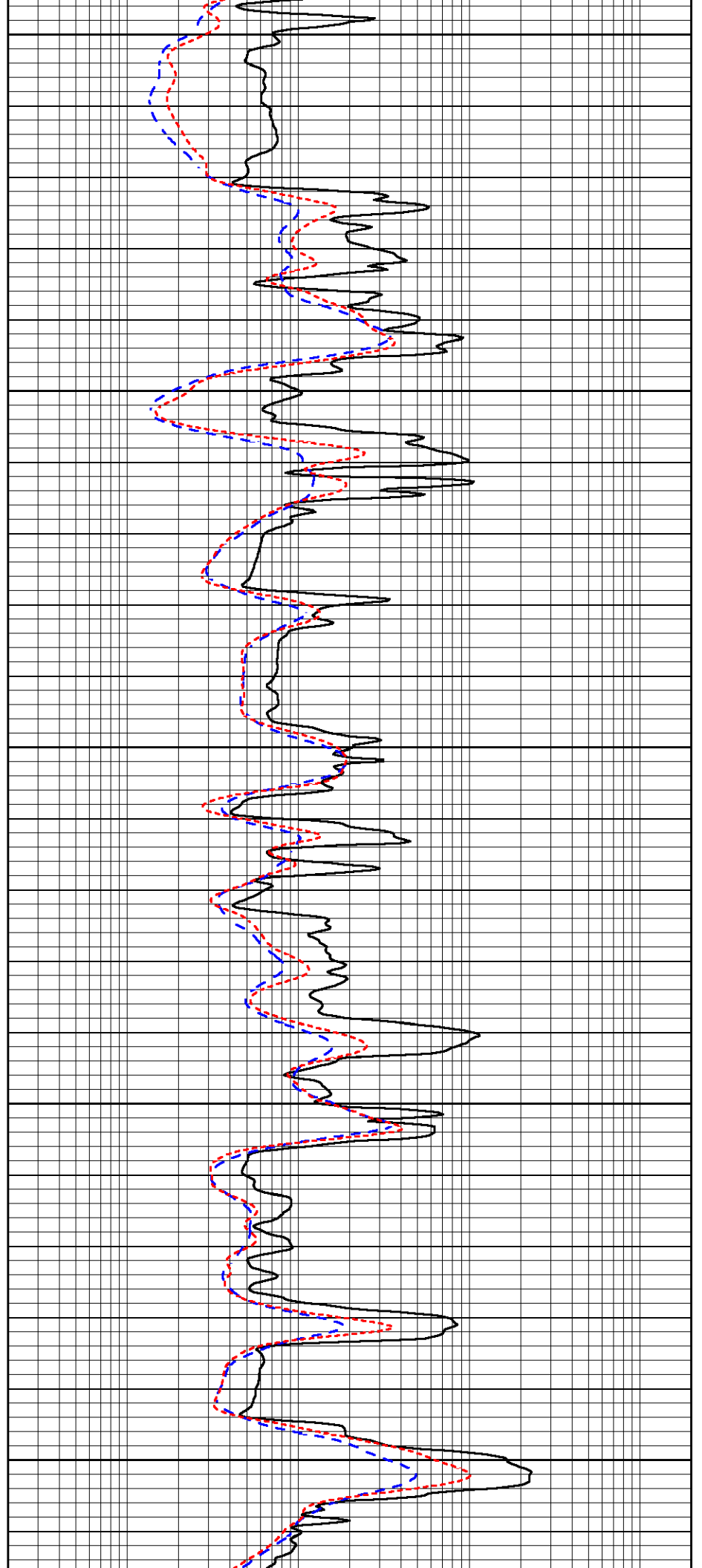
3900

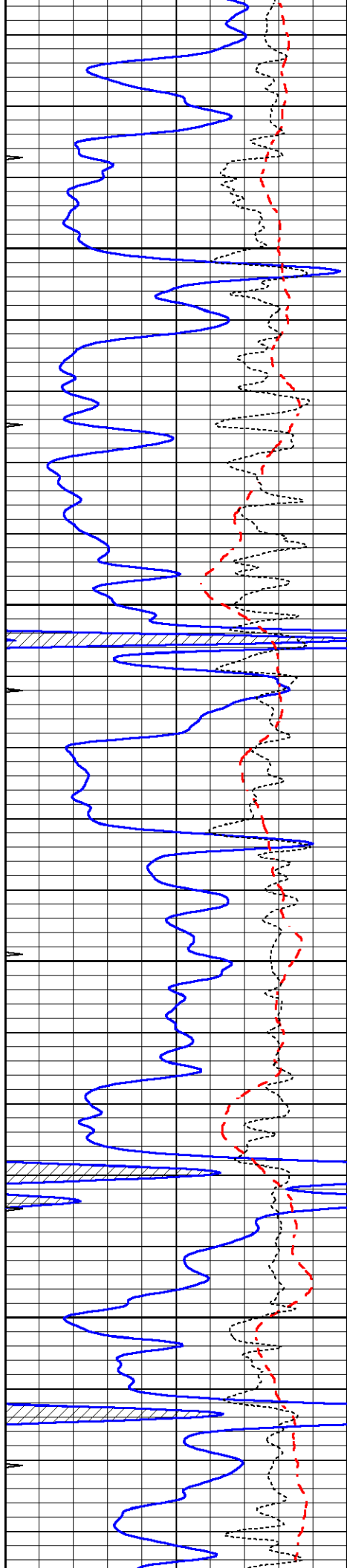
3950

4000

4050

4100



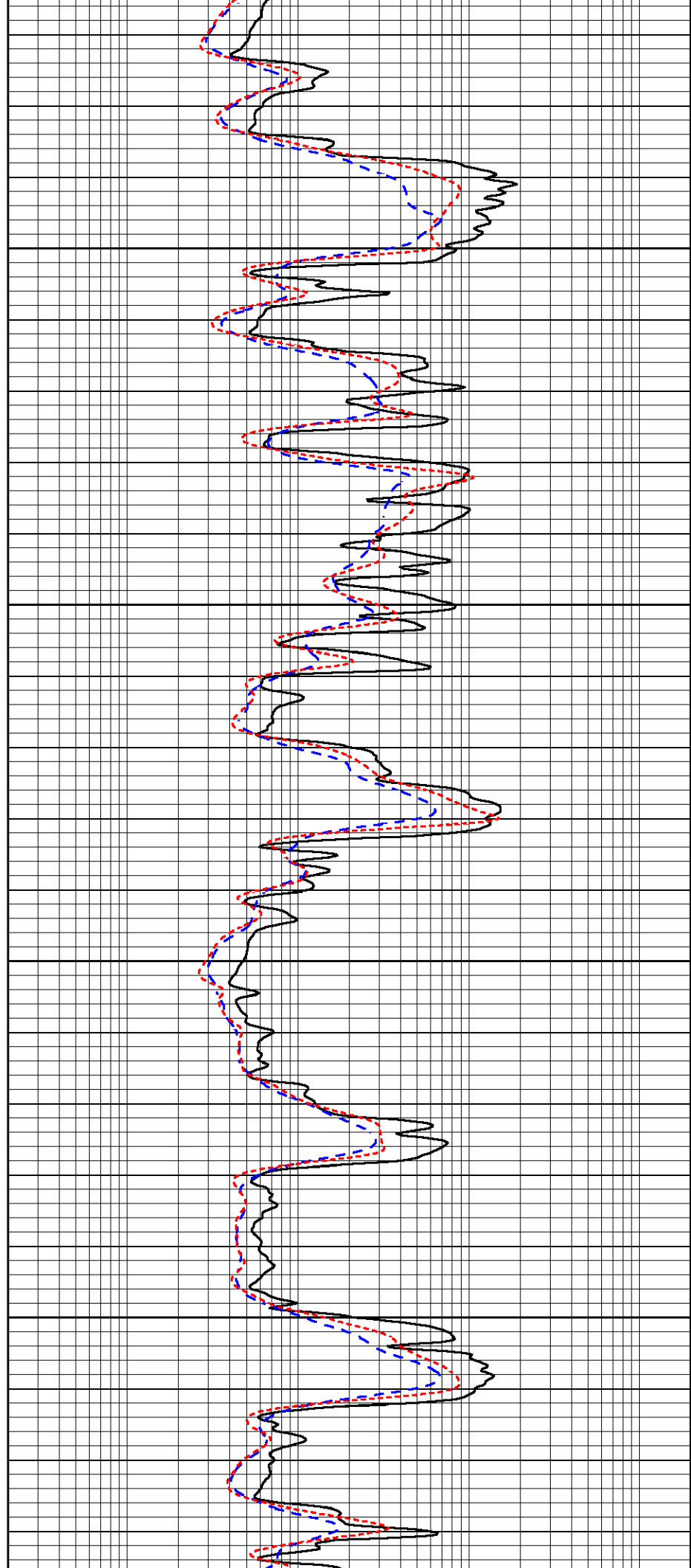


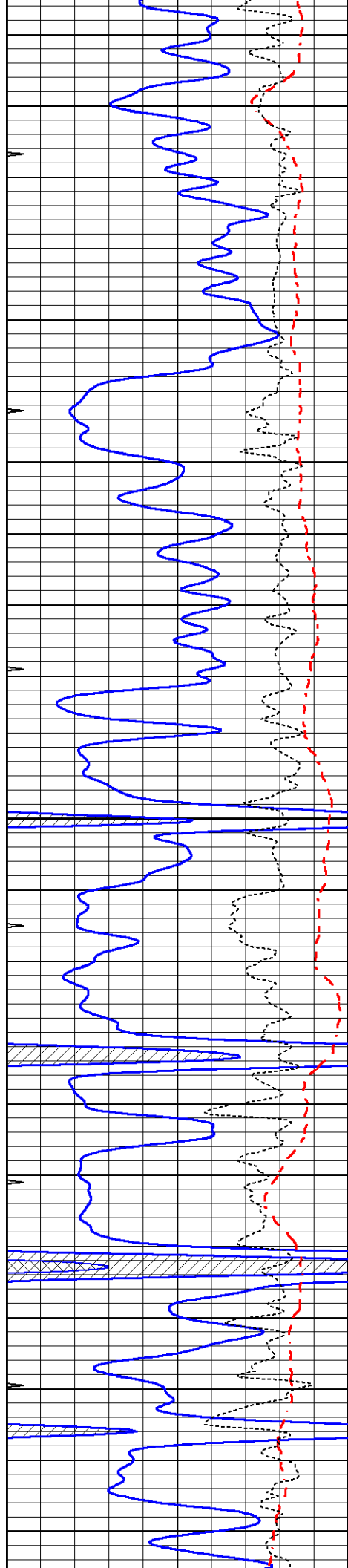
4150

4200

4250

4300





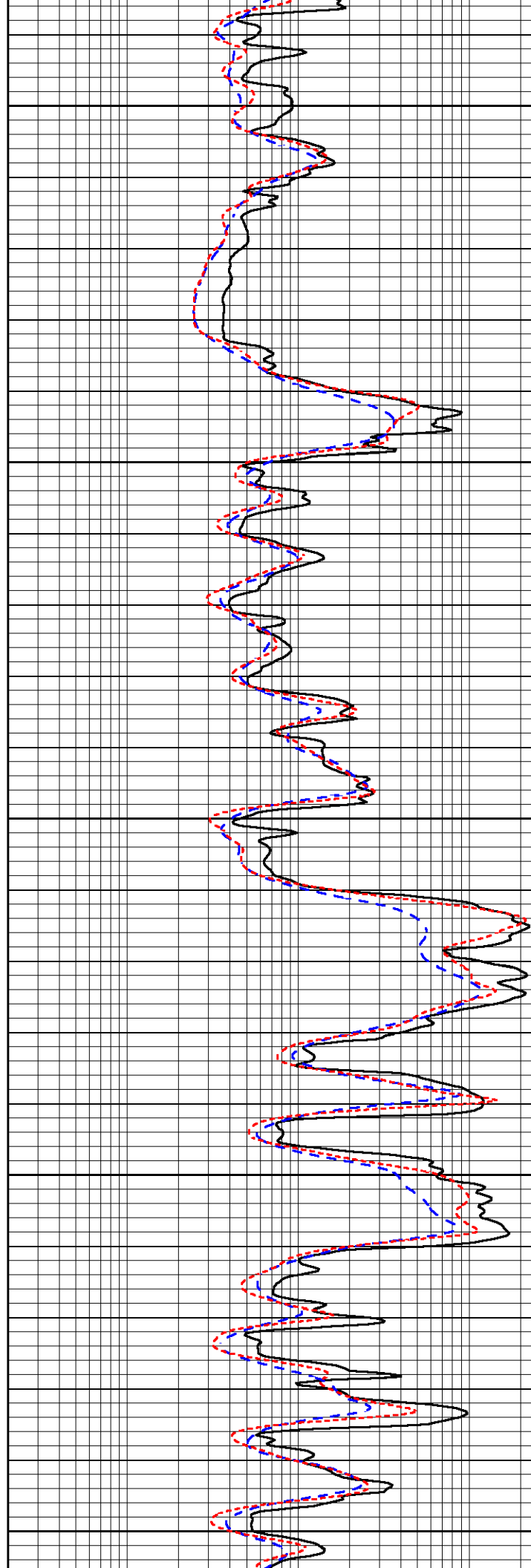
4350

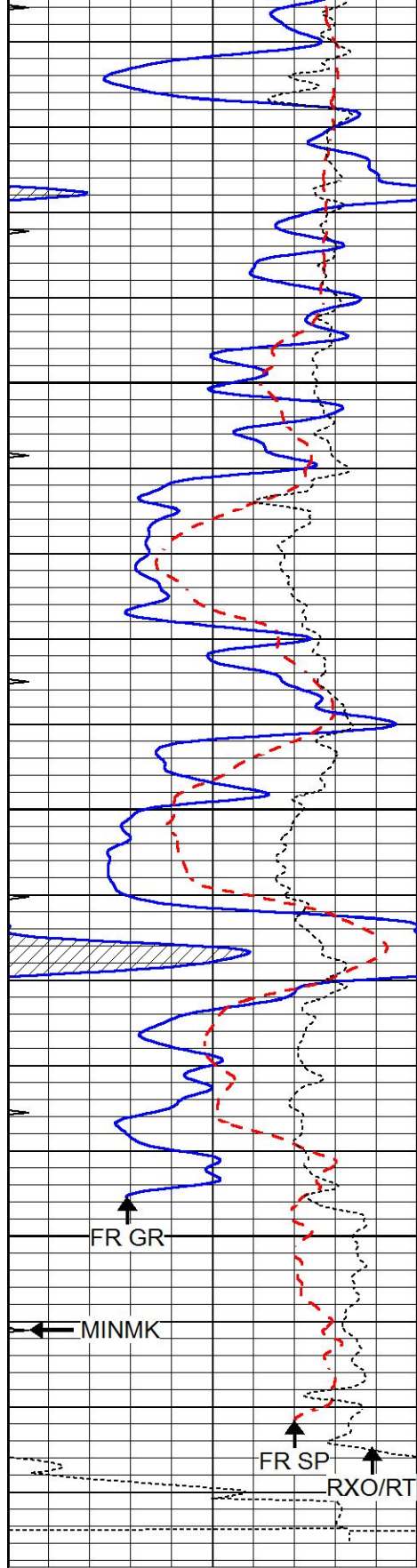
4400

4450

4500

4550





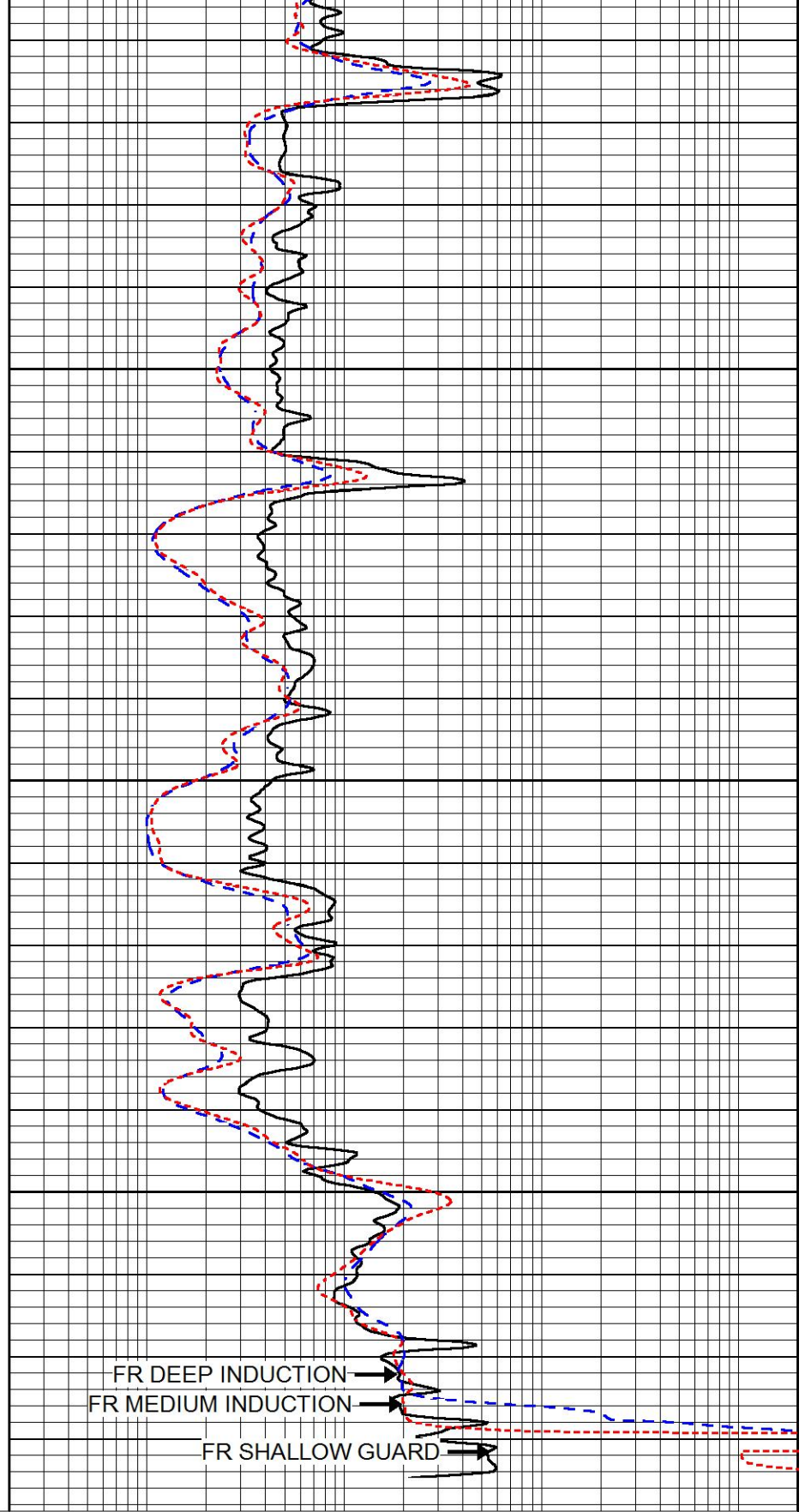
4600

4650

4700

LTD 4734

0	GAMMA RAY (GAPI)	150
-100	SP (mV)	100
-250	Rxo/Rt	50
0	MINMK	20



0.2	SHALLOW GUARD (Ohm-m)	2000
0.2	DEEP INDUCTION (Ohm-m)	2000
0.2	MEDIUM INDUCTION (Ohm-m)	2000



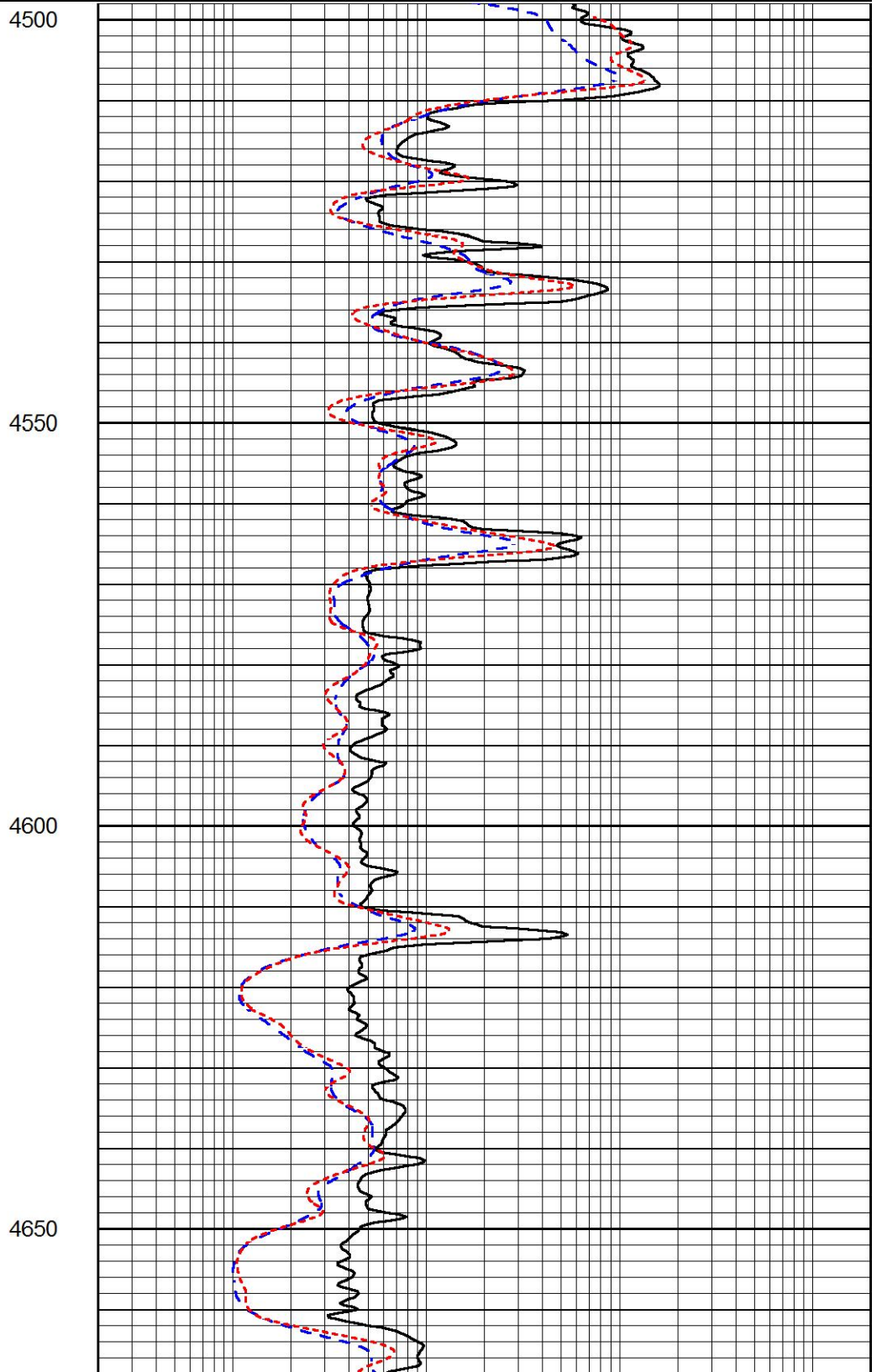
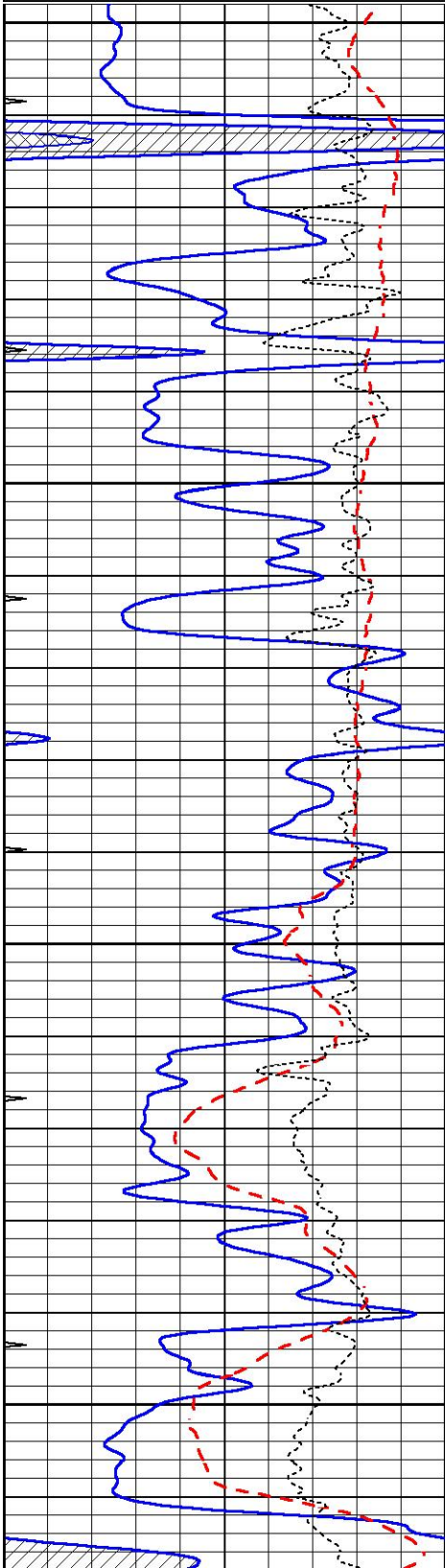
REPEAT SECTION

# REFLECT SECTION

Database File 6721ddn.db  
Dataset Pathname pass2.2R  
Presentation Format \_dil  
Dataset Creation Mon Nov 14 22:48:31 2022  
Charted by Depth in Feet scaled 1:240

0	GAMMA RAY (GAPI)	150
-100	SP (mV)	100
-250	Rxo/Rt	50
0	MINMK	20

0.2	SHALLOW GUARD (Ohm-m)	2000
0.2	DEEP INDUCTION (Ohm-m)	2000
0.2	MEDIUM INDUCTION (Ohm-m)	2000





	Readings			Targets			Results	
	Zero	Cal		Zero	Cal		m'	b'
Deep	0.000	0.000	mmho/m	0.000	0.000	mmho/m	0.000	0.000
Medium	0.000	0.000	mmho/m	0.000	0.000	mmho/m	0.000	0.000
LL3		1.000	Ohm-m		1.000	Ohm-m		
		0.000	Ohm-m		0.000	Ohm-m		
		1.000	mmho-m		1.000	mmho-m		

Litho Density Calibration Report  
Serial: 004      Model: PRB

Master Calibration

Performed Fri Nov 04 15:19:59 2022

	Background	Magnesium	Aluminum	Aluminum+Fe	
Window 1	1153.2	7232.1	2536.8	2279.5	cps
Window 2	1055.6	6225.5	2222.3	2030.5	cps
Window 3	902.5	3849.3	1546.4	1462.0	cps
Window 4	254.4	258.2	253.1	253.9	cps
Long Space	0.0	5169.9	1166.7	974.9	cps
Short Space	4.7	1383.0	950.5	792.1	cps
Rho		1.7100	2.5900	0.0000	g/cc
Pe		2.0000	2.7500	5.7900	
Rib Angle	: 45.9	Rib Slope	: 1.031	Density/Spine Ratio	: 0.573
Spine Angle	: 75.9	Spine Slope	: 3.970	Spine Intercept	: -20.2

Before Survey Verification

Performed Wed Dec 31 18:00:00 1969

Window 1	0.0	0.0	0.0	0.0	cps
Window 2	0.0	0.0	0.0	0.0	cps
Window 3	0.0	0.0	0.0	0.0	cps
Window 4	0.0	0.0	0.0	0.0	cps
Long Space	0.0	0.0	0.0	0.0	cps
Short Space	0.0	0.0	0.0	0.0	cps
Measured Rho		0.0000	0.0000	0.0000	g/cc
Measured Correction		0.0000	0.0000	0.0000	g/cc
Measured Pe			0.0000	0.0000	

After Survey Verification

Performed Wed Dec 31 18:00:00 1969

Window 1	0.0	0.0	0.0	0.0	cps
Window 2	0.0	0.0	0.0	0.0	cps
Window 3	0.0	0.0	0.0	0.0	cps
Window 4	0.0	0.0	0.0	0.0	cps
Long Space	0.0	0.0	0.0	0.0	cps
Short Space	0.0	0.0	0.0	0.0	cps
Measured Rho		0.0000	0.0000	0.0000	g/cc
Measured Correction		0.0000	0.0000	0.0000	g/cc
Measured Pe			0.0000	0.0000	

Compensated Neutron Calibration Report

Serial Number:      6I  
Tool Model:          G

CALIBRATION

Detector                      Readings                      Target                      Normalization

Detector	Readings	Target	Normalization
Short Space	1.00 cps	1.00 cps	1.0000
Long Space	1.00 cps	1.00 cps	1.0000

PRE-SURVEY VERIFICATION

	Detector	Readings	Measured	Target
1)	Short Space	cps		
	Long Space	cps	pu	pu
2)	Short Space	cps		
	Long Space	cps	pu	
3)	Short Space	cps		
	Long Space	cps	pu	

POST-SURVEY VERIFICATION

	Detector	Readings	Measured	Target
1)	Short Space	cps		
	Long Space	cps	pu	pu
2)	Short Space	cps		
	Long Space	cps	pu	pu
3)	Short Space	cps		
	Long Space	cps	pu	pu

Gamma Ray Calibration Report

Serial Number:	GR6	
Tool Model:	OPEN	
Performed:	Tue Nov 08 13:43:57 2022	
Calibrator Value:	150.0	GAPI
Background Reading:	0.0	cps
Calibrator Reading:	276.0	cps
Sensitivity:	0.8500	GAPI/cps