

MICRO LOG



Company MERIDIAN ENERGY, INC.
 Well SIMON SAYS UNIT #1
 Field CLAP YOUR HANDS
 County RAWLINS
 State KANSAS

Company MERIDIAN ENERGY, INC.
 Well SIMON SAYS UNIT #1
 Field CLAP YOUR HANDS
 County RAWLINS State KANSAS

Location: API #: 15-153-21299-0000
 1460' FSL & 2020' FEL
 SE - SW - NW - SE
 SEC 7 TWP 5S RGE 33W
 Permanent Datum GROUND LEVEL Elevation 3171
 Log Measured From KELLY BUSHING 5' A.G.L.
 Drilling Measured From KELLY BUSHING
 Other Services
 CDL/CNL
 MEL/SON
 Elevation
 K.B. 3176
 D.F. 3174
 G.L. 3171

Date	11/15/22		
Run Number	TWO		
Depth Driller	4735		
Depth Logger	4734		
Bottom Logged Interval	4718		
Top Log Interval	3700		
Casing Driller	8 5/8"@308'		
Casing Logger	308		
Bit Size	7 7/8"		
Type Fluid in Hole	CHEMICAL MUD	CHLORIDES: 3,000 PPM	
Density / Viscosity	9.4/53		
pH / Fluid Loss	11.0/8.0		
Source of Sample	FLOWLINE		
Rm @ Meas. Temp	1.20@57F		
Rmf @ Meas. Temp	.900@57F		
Rmc @ Meas. Temp	1.44@57F		
Source of Rmf / Rmc	.556@123F		
Rm @ BHT	1.08@57F		
Time Circulation Stopped	4 HOURS		
Time Logger on Bottom	12:00 A.M.		
Maximum Recorded Temperature	123F		
Equipment Number	8916		
Location	HAYS, KANSAS		
Recorded By	JEFF LUEBBERS		
Witnessed By	WESTON LAFON		

<<< Fold Here >>>

All interpretations are opinions based on inferences from electrical or other measurements and we cannot and do not guarantee the accuracy or correctness of any interpretation, and we shall not, except in the case of gross or willful negligence on our part, be liable or responsible for any loss, costs, damages, or expenses incurred or sustained by anyone resulting from any interpretation made by any of our officers, agents or employees. These interpretations are also subject to our general terms and conditions set out in our current Price Schedule.

Comments

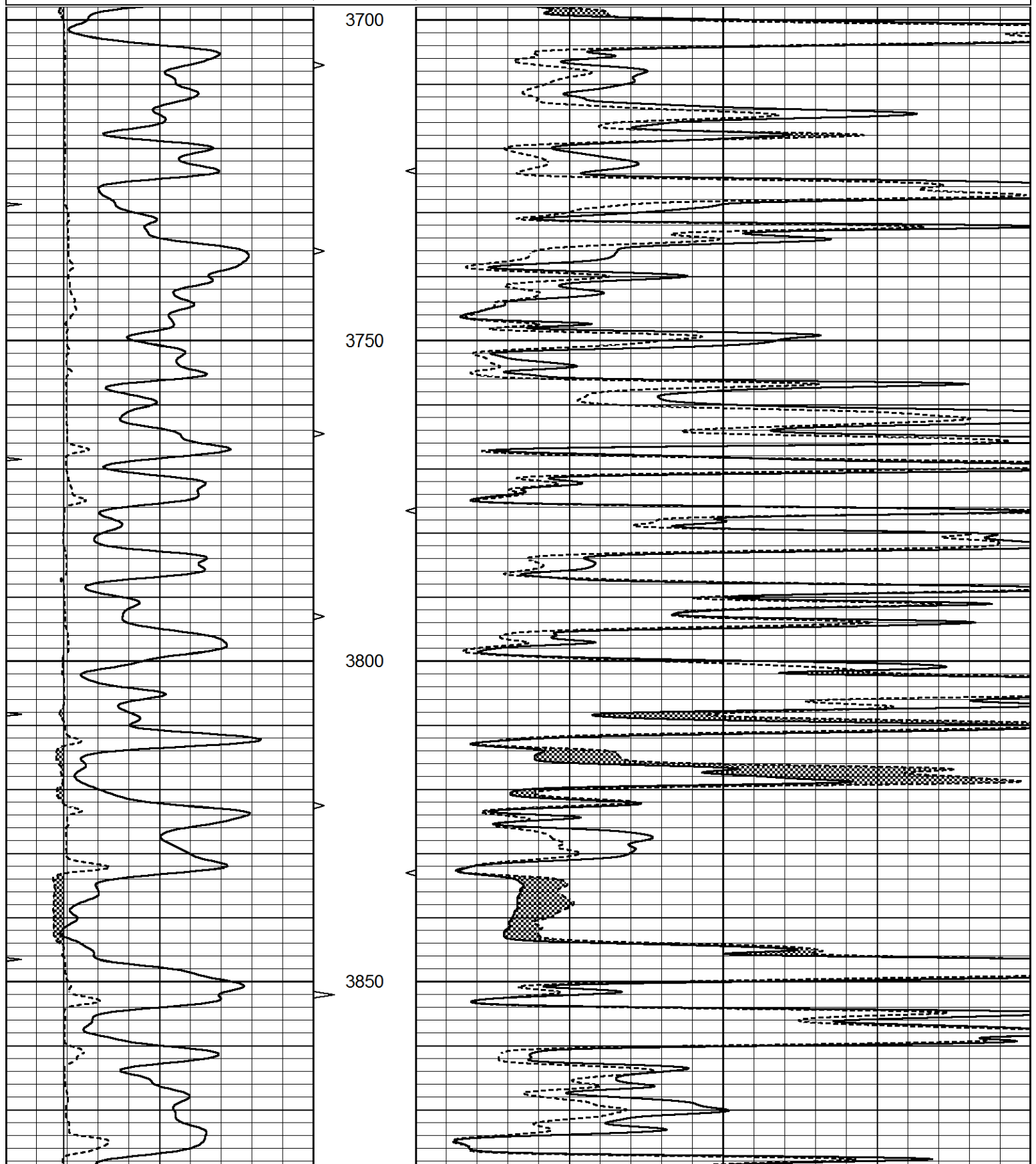
THANK YOU FOR USING ELI WIRELINE, HAYS, KS. (785) 628-6395
 DIRECTIONS:
 COLBY, KS., 16N. ON HWY 25 TO "RD. E", 1/4W., N. INTO

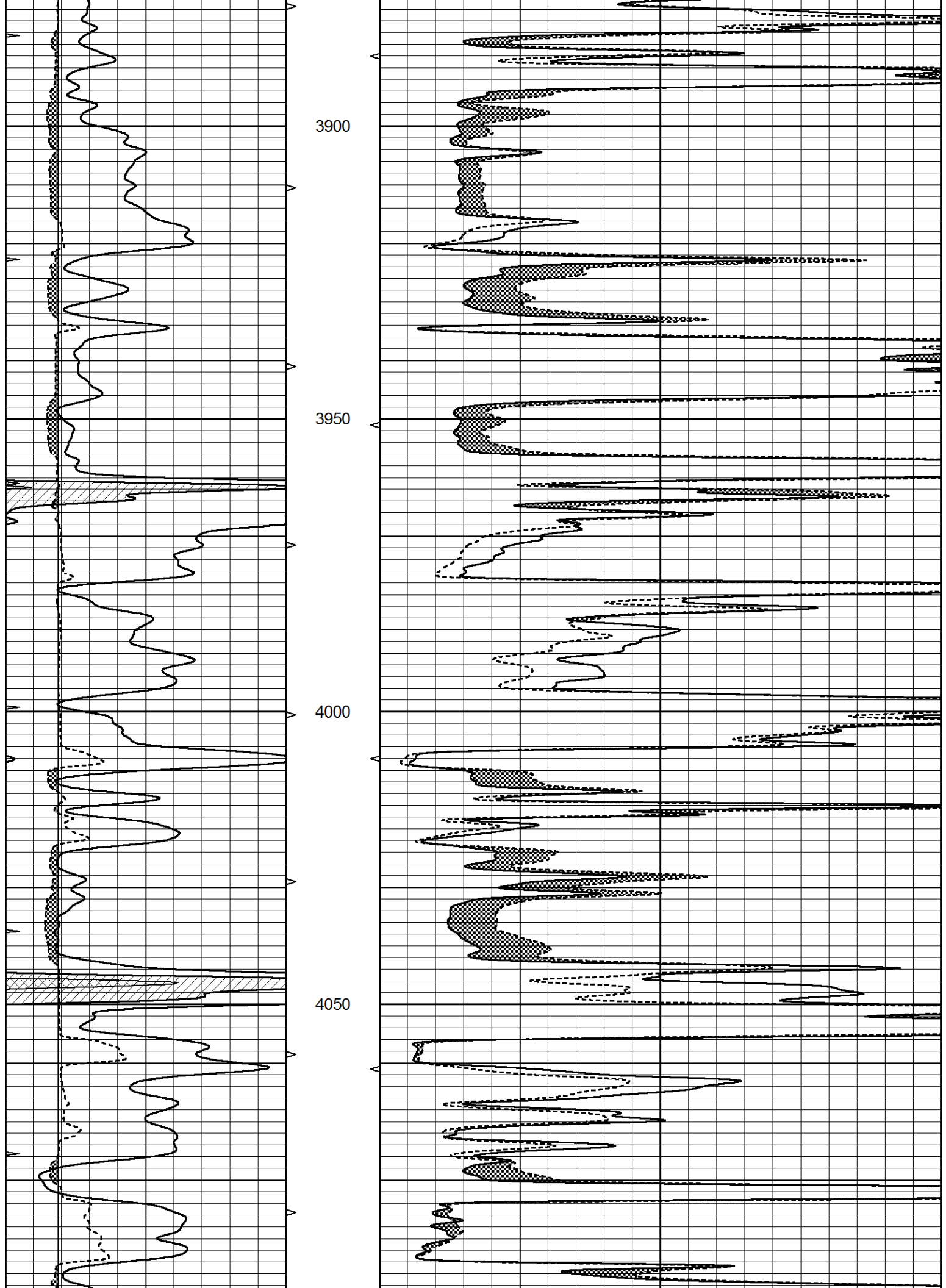


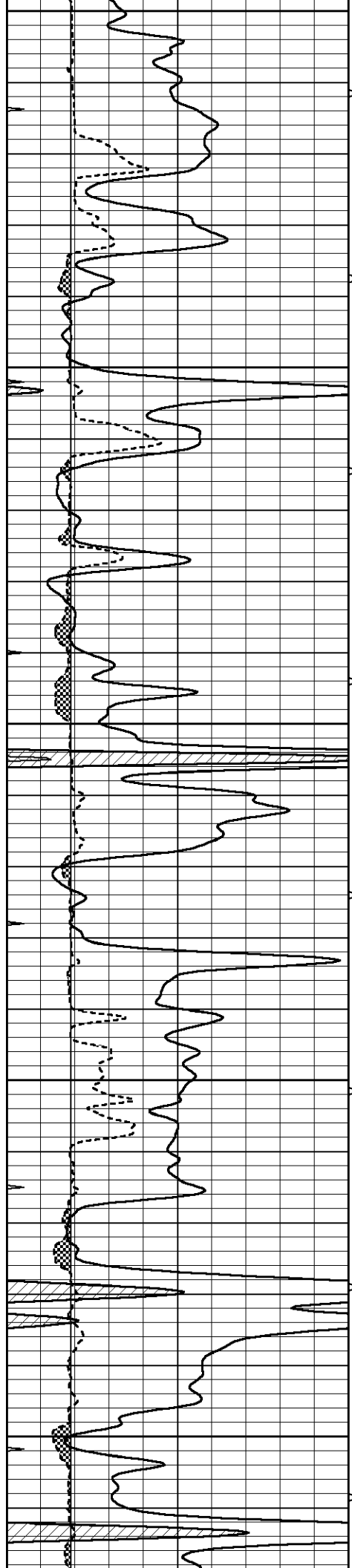
MAIN SECTION

Database File 6721ddn.db
 Dataset Pathname pass6.5
 Presentation Format _micro
 Dataset Creation Tue Nov 15 01:05:55 2022
 Charted by Depth in Feet scaled 1:240

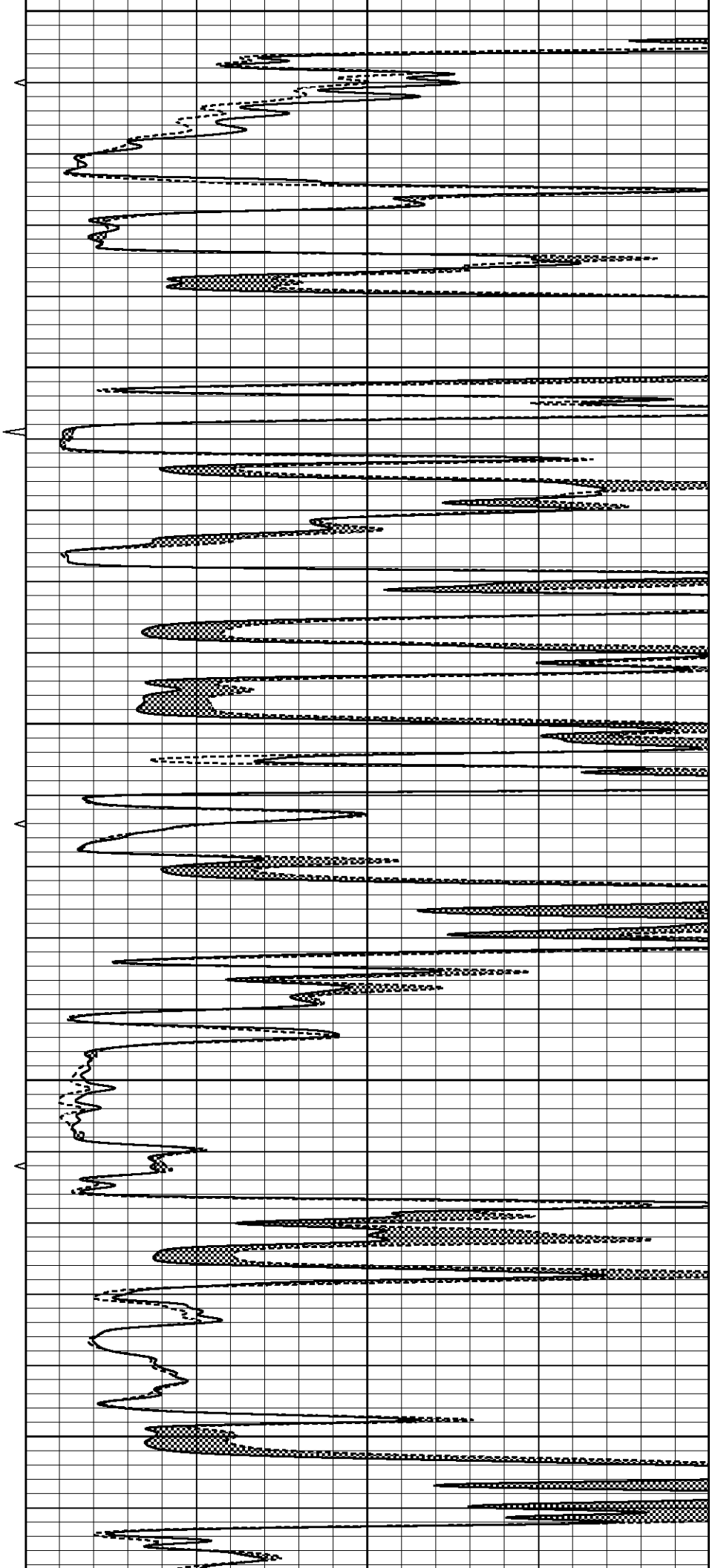
0	GAMMA RAY (GAPI)	150	ABHV	0	MEL1.5 (Ohm-m)	40
6	CALIPER (in)	16	10 (ft3)	0	MEL2.0 (Ohm-m)	40
0	MINMK	20	TBHV			
			0 (ft3)	10		

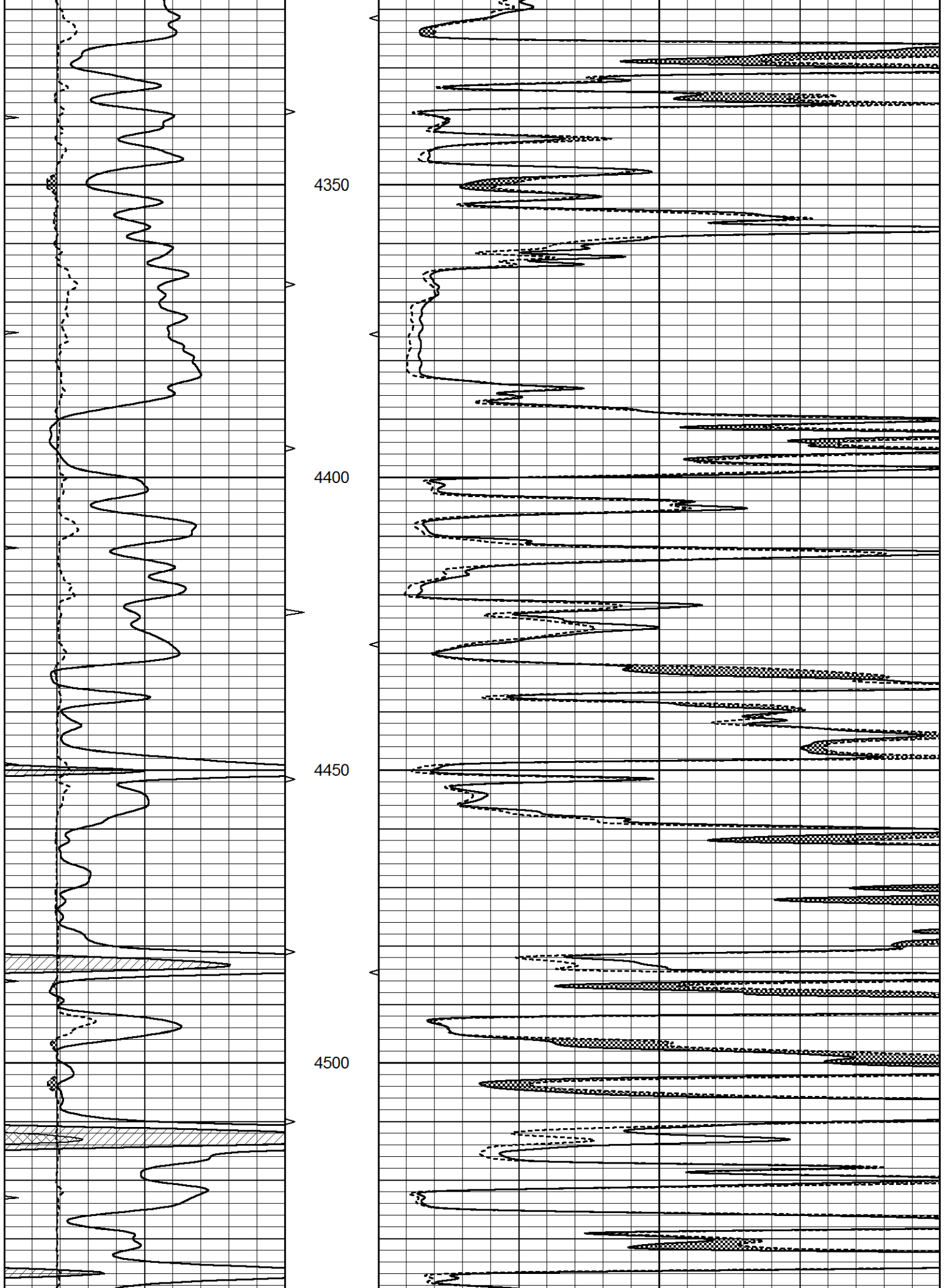


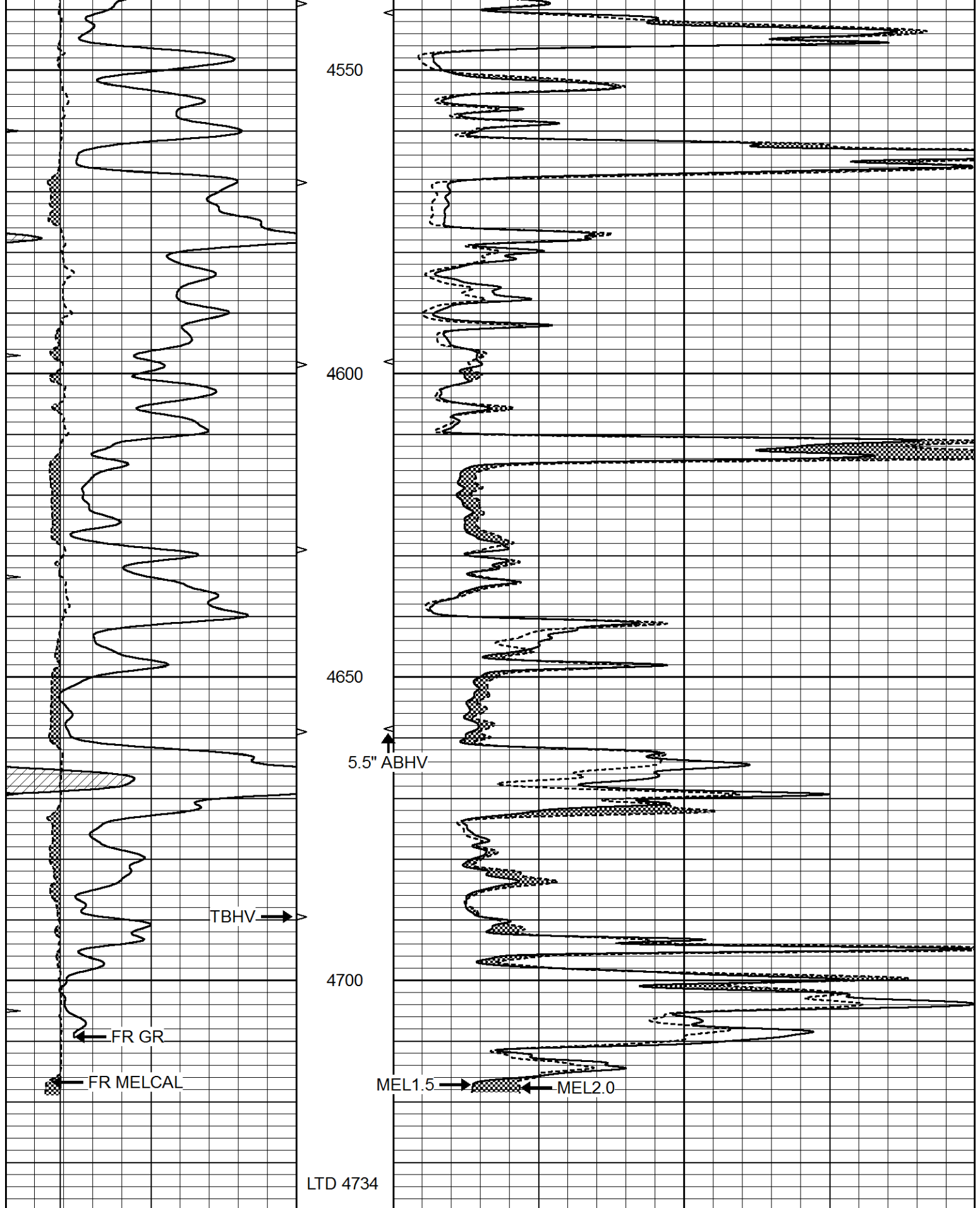




4100
4150
4200
4250
4300







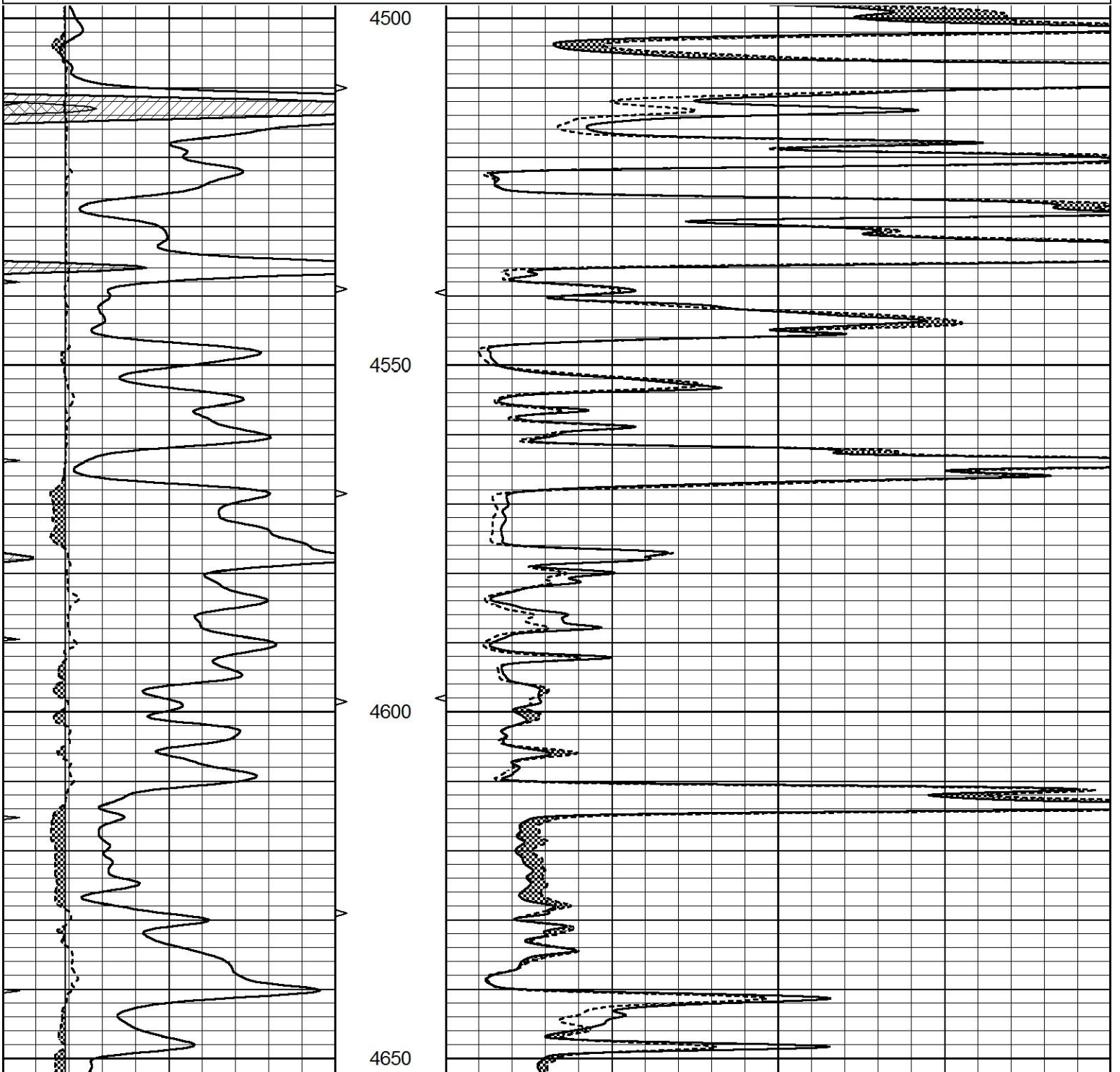
0	GAMMA RAY (GAPI)	150	ABHV	0	MEL1.5 (Ohm-m)	40
6	CALIPER (in)	16	10 (ft3)	0 0	MEL2.0 (Ohm-m)	40
0	MINMK	20	TBHV			
			0 (ft3)	10		

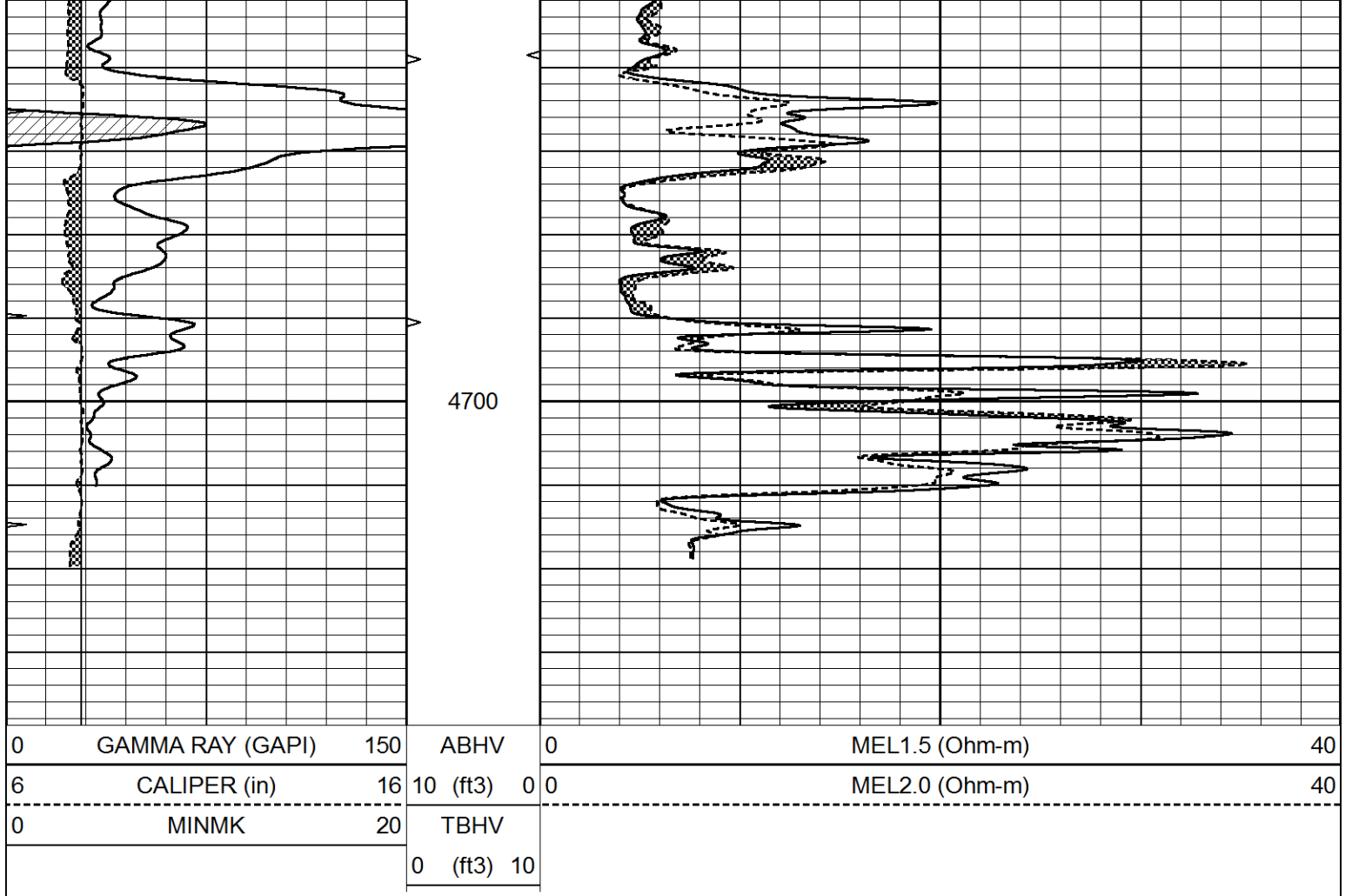


REPEAT SECTION

Database File 6721ddn.db
 Dataset Pathname pass5.3
 Presentation Format _micro
 Dataset Creation Tue Nov 15 00:57:18 2022
 Charted by Depth in Feet scaled 1:240

0	GAMMA RAY (GAPI)	150	ABHV	0	MEL1.5 (Ohm-m)	40
6	CALIPER (in)	16	10 (ft3)	0	MEL2.0 (Ohm-m)	40
0	MINMK	20	TBHV			
			0 (ft3)	10		





Calibration Report

Database File 6721ddn.db
 Dataset Pathname pass6.5
 Dataset Creation Tue Nov 15 01:05:55 2022

MICRO Calibration Report

Serial Number:	MICRO6	
Tool Model:	PROBE	
Performed:	Tue Nov 15 00:26:30 2022	
Caliper Calibration:	Gain=-2.862	Offset=18.733
References	Low Cal 8.000	High Cal 16.000
Readings	3.750	0.955
1.5" Calibration:	Gain=46.000	Offset=0.000
References	Low Cal 0.000	High Cal 20.000
Readings	0.002	0.624
2" Calibration:	Gain=60.000	Offset=-1.300
References	Low Cal 0.000	High Cal 20.000
Readings	0.006	0.468

Gamma Ray Calibration Report

Serial Number:	GR5
Tool Model:	OPEN

Performed:	Wed Jul 20 23:52:54 2022	
Calibrator Value:	1.0	GAPI
Background Reading:	0.0	cps
Calibrator Reading:	1.0	cps
Sensitivity:	0.5600	GAPI/cps