



**COMPENSATED  
DENSITY/NEUTRON  
LOG**

Company MERIDIAN ENERGY, INC.  
Well SIMON SAYS UNIT #1  
Field CLAP YOUR HANDS  
County RAWLINS  
State KANSAS

Company MERIDIAN ENERGY, INC.  
Well SIMON SAYS UNIT #1  
Field CLAP YOUR HANDS  
County RAWLINS State KANSAS

Location: API #: 15-153-21299-0000  
1460' FSL & 2020' FEL  
SE - SW - NW - SE  
SEC 7 TWP 5S RGE 33W  
Permanent Datum GROUND LEVEL Elevation 3171  
Log Measured From KELLY BUSHING 5' A.G.L.  
Drilling Measured From KELLY BUSHING  
Other Services  
DILMEL  
SONIC  
Elevation  
K.B. 3176  
D.F. 3174  
G.L. 3171

Date	11/14/22
Run Number	ONE
Depth Driller	4735
Depth Logger	4734
Bottom Logged Interval	4710
Top Log Interval	3700
Casing Driller	8 5/8"@308'
Casing Logger	308
Bit Size	7 7/8"
Type Fluid in Hole	CHEMICAL MUD
Density / Viscosity	9.4/53
pH / Fluid Loss	11.0/8.0
Source of Sample	FLOWLINE
Rm @ Meas. Temp	1.20@57F
Rmf @ Meas. Temp	.900@57F
Rmc @ Meas. Temp	1.44@57F
Source of Rmf / Rmc	.556@123F
Rm @ BHT	1.08@57F
Time Circulation Stopped	2.5 HOURS
Time Logger on Bottom	10:00 P.M.
Maximum Recorded Temperature	123F
Equipment Number	8916
Location	HAYS, KANSAS
Recorded By	JEFF LUEBBERS
Witnessed By	WESTON LAFON

<<< Fold Here >>>

All interpretations are opinions based on inferences from electrical or other measurements and we cannot and do not guarantee the accuracy or correctness of any interpretation, and we shall not, except in the case of gross or willful negligence on our part, be liable or responsible for any loss, costs, damages, or expenses incurred or sustained by anyone resulting from any interpretation made by any of our officers, agents or employees. These interpretations are also subject to our general terms and conditions set out in our current Price Schedule.

Comments

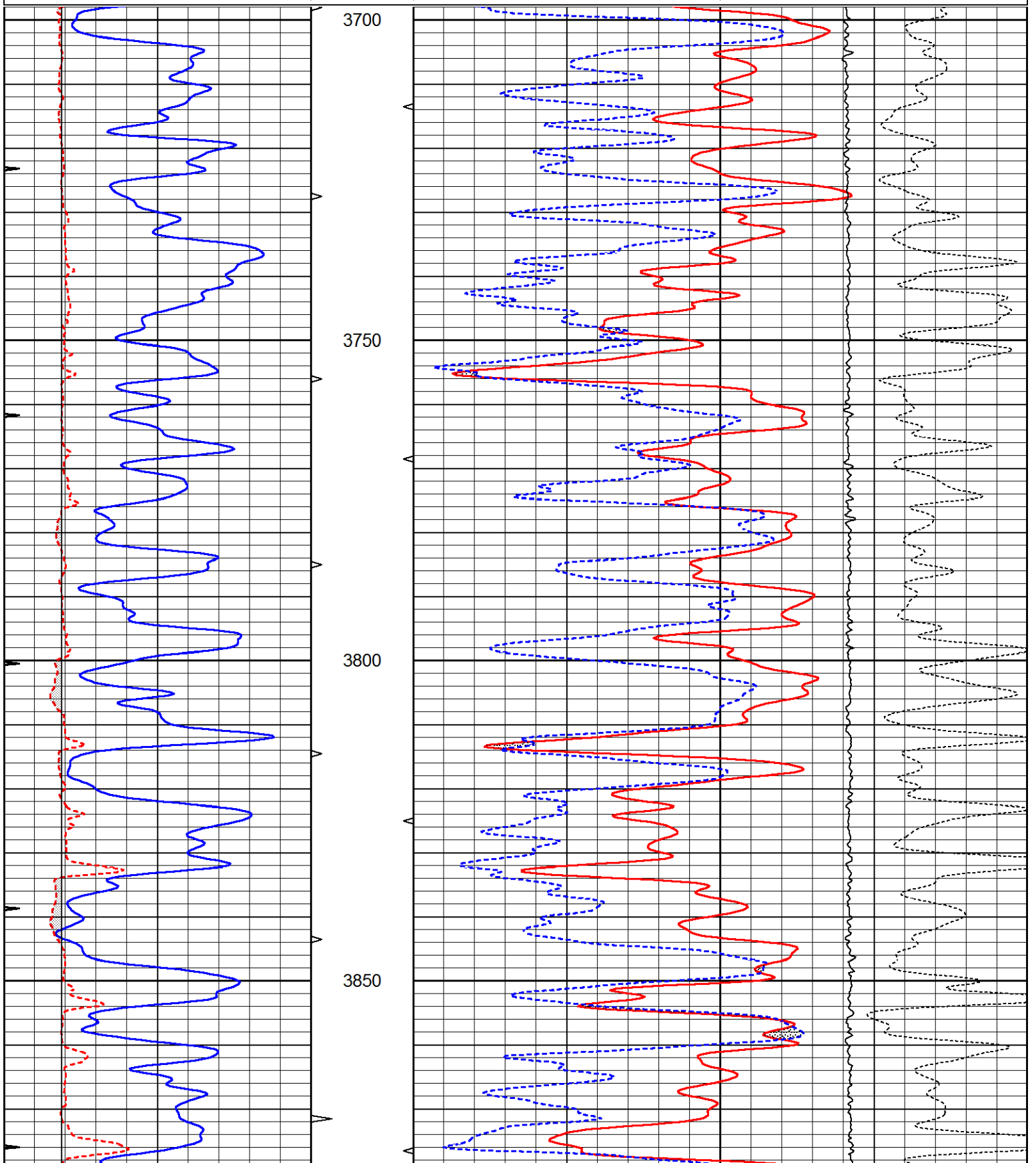
THANK YOU FOR USING ELI WIRELINE, HAYS, KS. (785) 628-6395  
DIRECTIONS:  
COLBY, KS., 16N. ON HWY 25 TO "RD. E", 1/4W., N. INTO

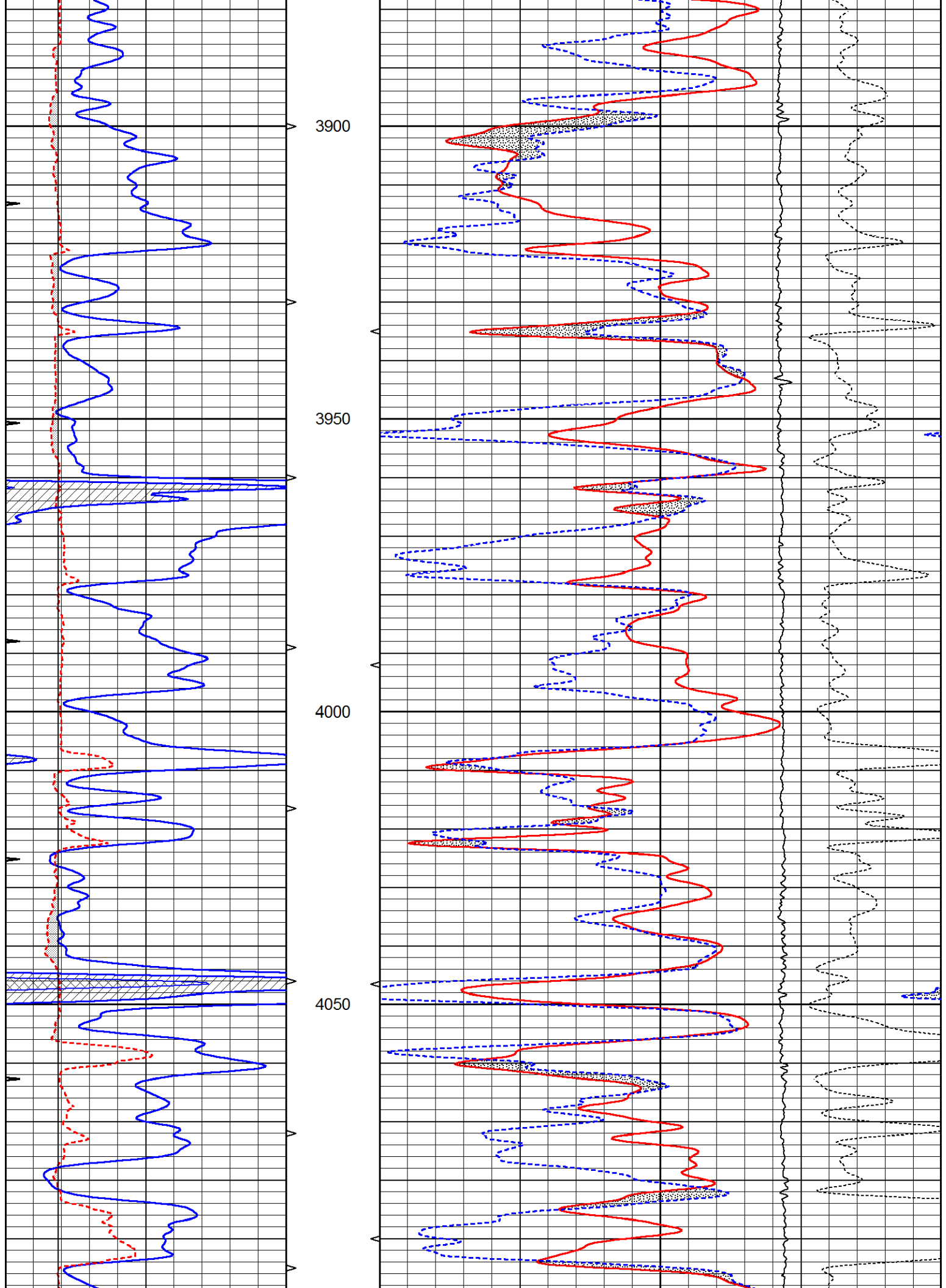


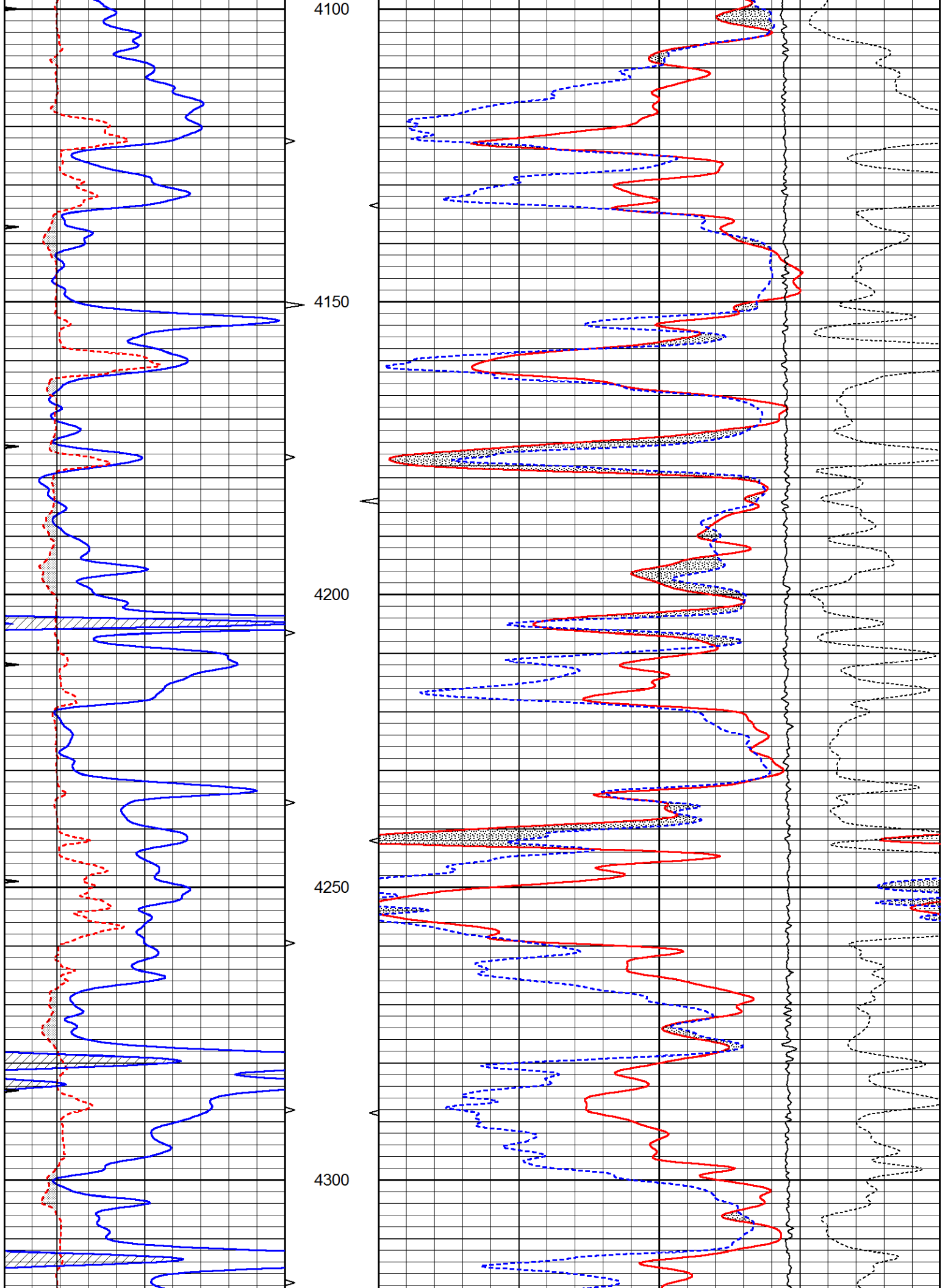
**MAIN SECTION**

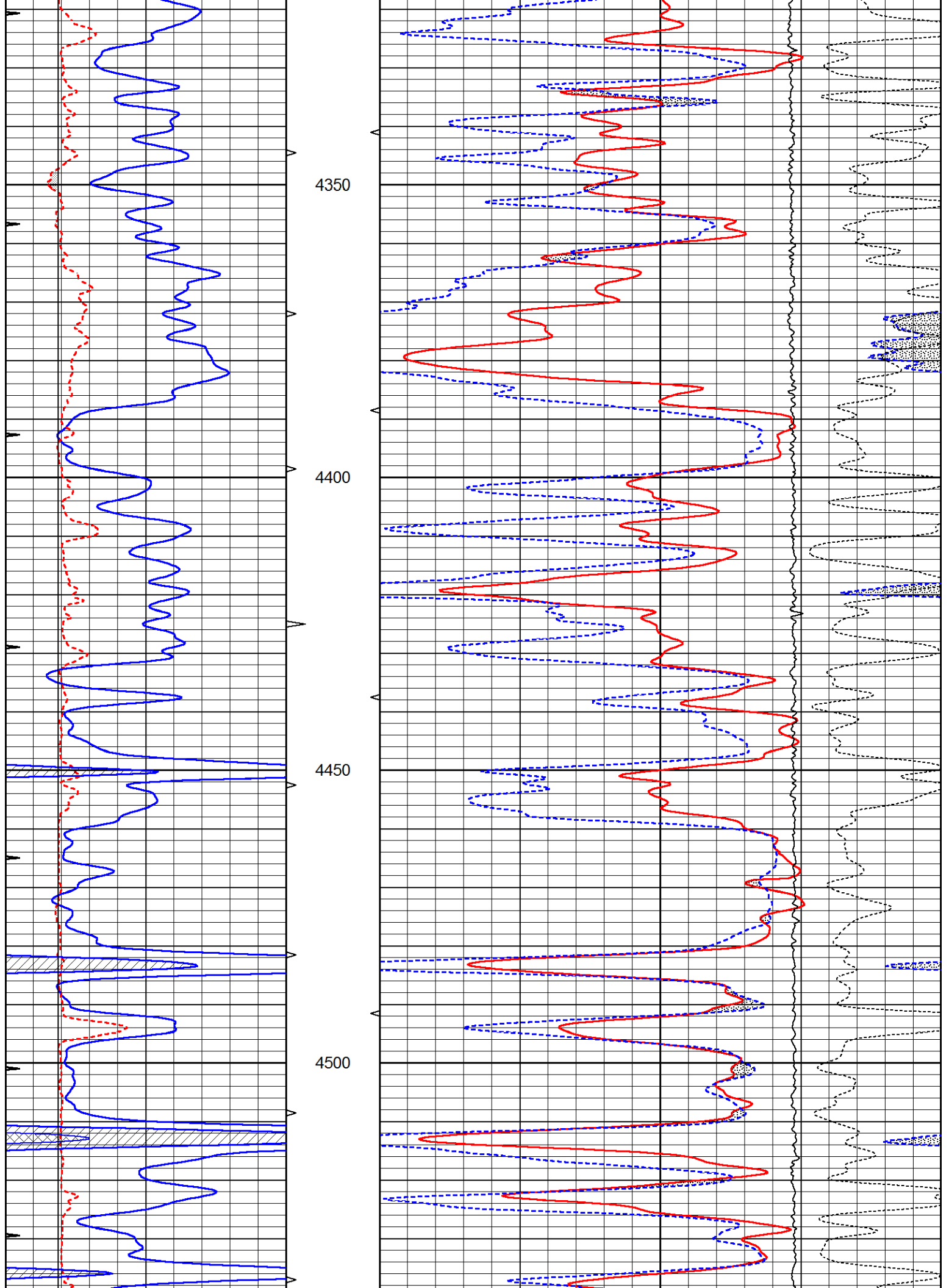
Database File 6721ddn.db  
 Dataset Pathname pass3.1M  
 Presentation Format den\_neu  
 Dataset Creation Mon Nov 14 23:46:13 2022  
 Charted by Depth in Feet scaled 1:240

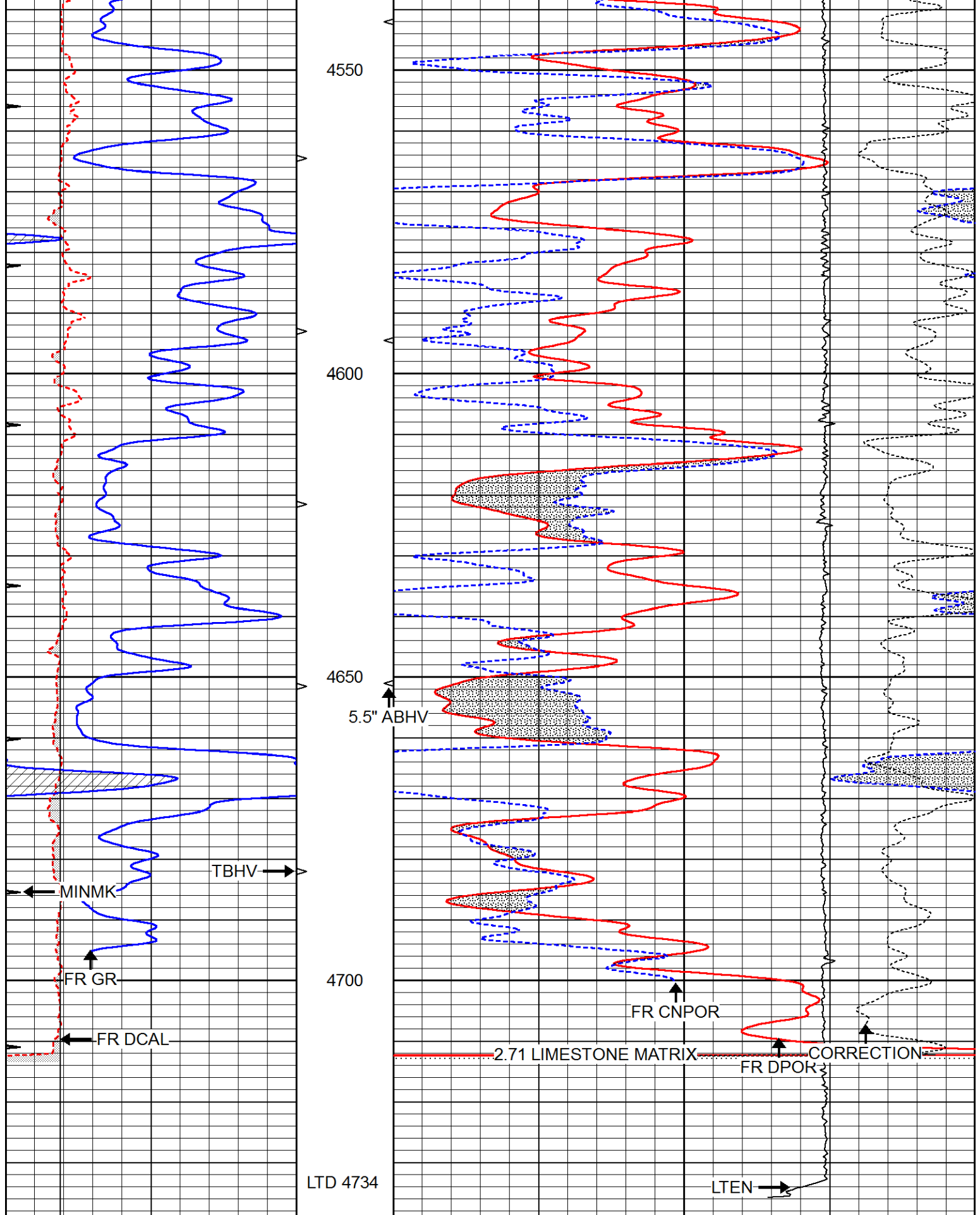
0	GAMMA RAY (GAPI)	150	ABHV	30	COMPENSATED DENSITY (pu)	-10	
6	CALIPER (in)	16	10 (ft3)	0	COMPENSATED NEUTRON (pu)	-10	
0	MINMK	20	TBHV		-0.25 CORRECTION (g/cc)	0.25	
			0 (ft3)	10	0	LTEN (lb)	5000











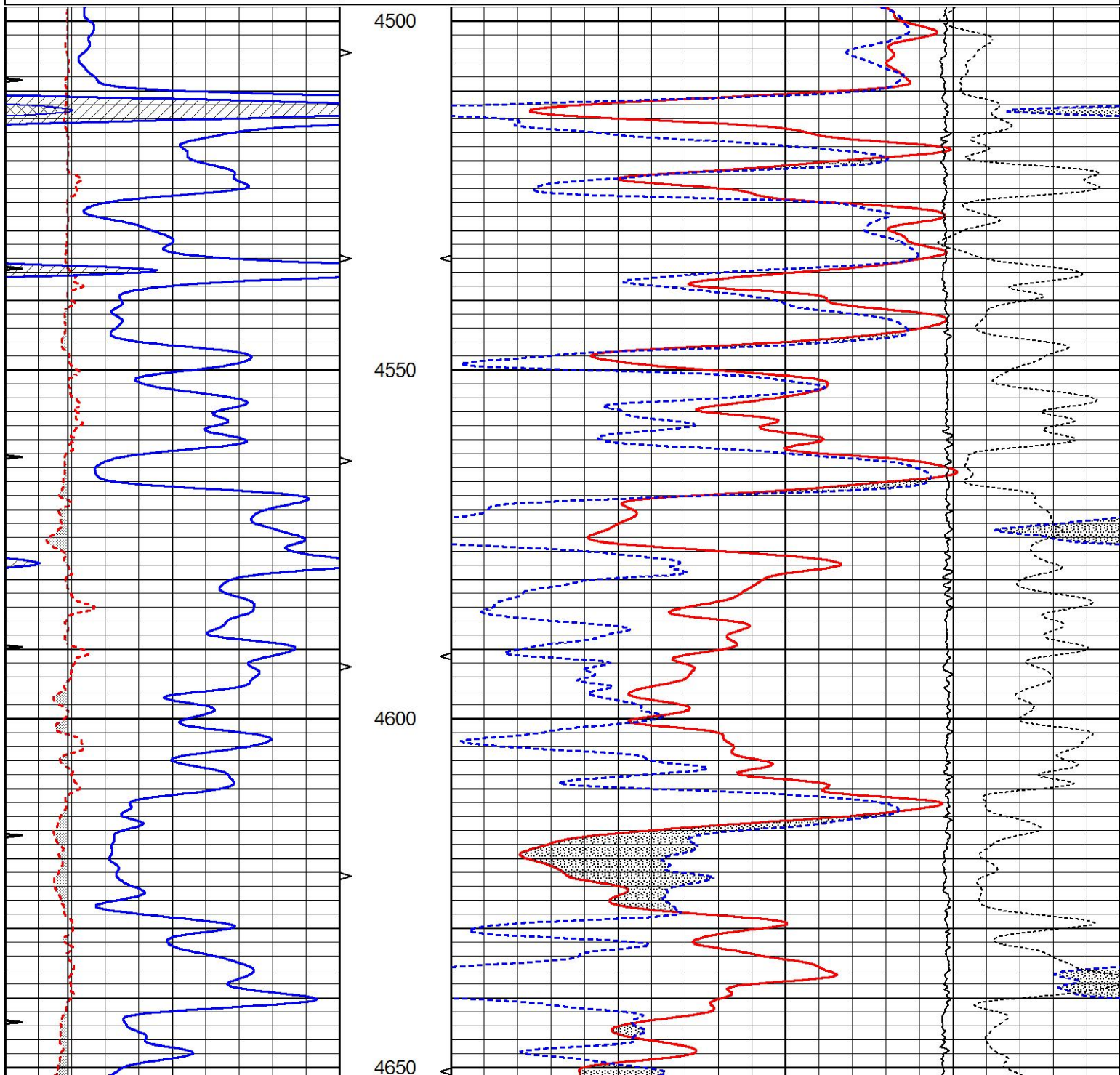
0	GAMMA RAY (GAPI)	150	ABHV	30	COMPENSATED DENSITY (pu)	-10	
6	CALIPER (in)	16	10 (ft3)	0 30	COMPENSATED NEUTRON (pu)	-10	
0	MINMK	20	TBHV		-0.25	CORRECTION (g/cc)	0.25
			0 (ft3)	10	0	LTEN (lb)	5000

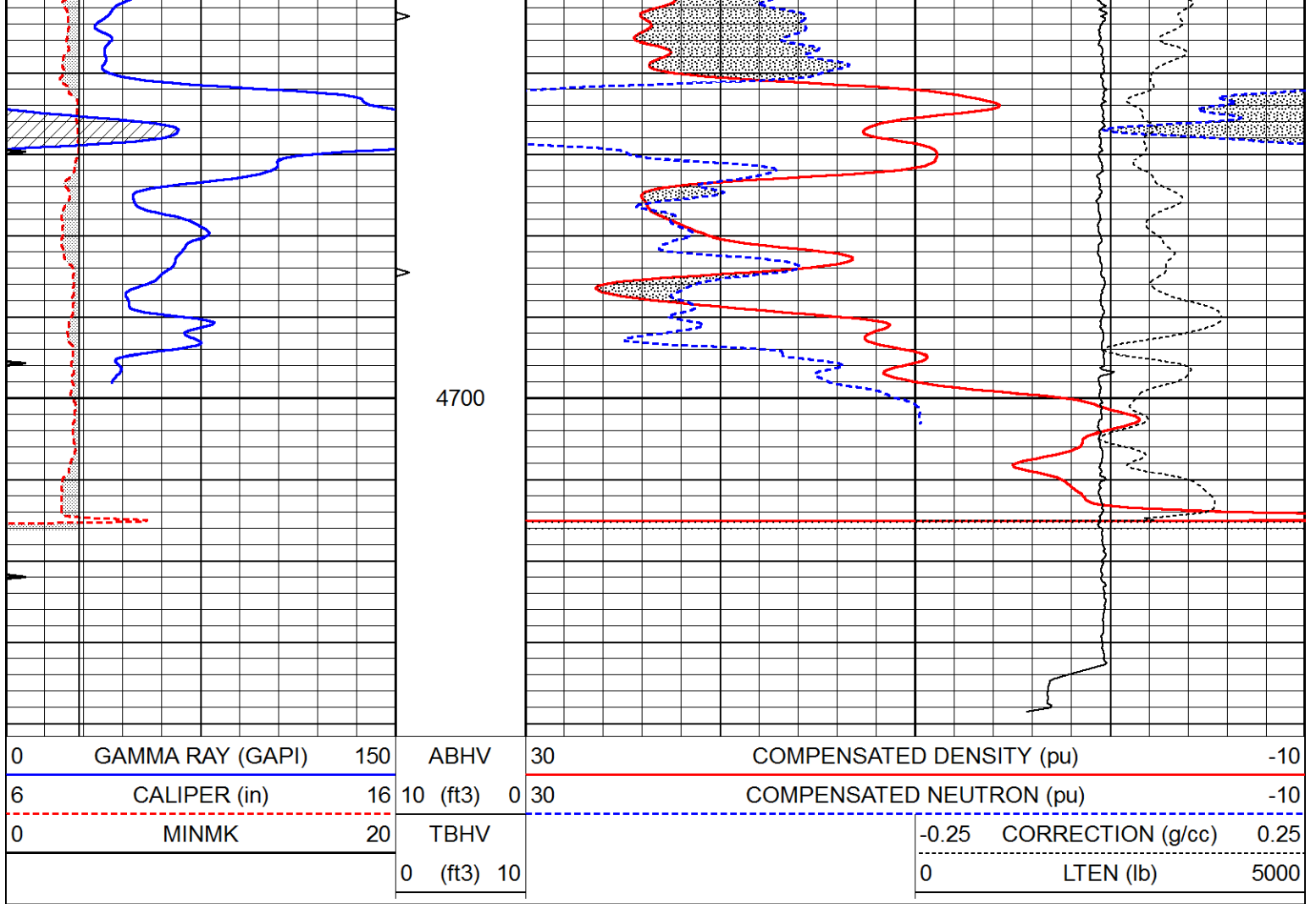


# REPEAT SECTION

Database File 6721ddn.db  
 Dataset Pathname pass2.2R  
 Presentation Format den\_neu  
 Dataset Creation Mon Nov 14 22:48:31 2022  
 Charted by Depth in Feet scaled 1:240

0	GAMMA RAY (GAPI)	150	ABHV	30	COMPENSATED DENSITY (pu)	-10	
6	CALIPER (in)	16	10 (ft3)	0 30	COMPENSATED NEUTRON (pu)	-10	
0	MINMK	20	TBHV		-0.25 CORRECTION (g/cc)	0.25	
			0 (ft3)	10	0	LTEN (lb)	5000





### Calibration Report

Database File 6721ddn.db  
 Dataset Pathname pass3.1M  
 Dataset Creation Mon Nov 14 23:46:13 2022

### Dual Induction Calibration Report

Serial-Model: PROBE8-DILG  
 Surface Cal Performed: Thu Nov 10 07:46:25 2022  
 Downhole Cal Performed: Mon Sep 10 14:28:38 2018  
 After Survey Verification Performed: Mon Sep 10 14:28:40 2018

#### Surface Calibration

Loop:	Readings				References			Results	
	Air	Loop			Air	Loop		m	b
Deep	0.015	0.648	V	0.000	400.000	mmho/m	620.000	2.000	
Medium	0.029	0.796	V	0.000	464.000	mmho/m	620.000	-10.000	
Internal:	Zero	Cal		Zero	Cal		m	b	
Deep	0.017	0.657	V	0.000	400.000	mmho/m	625.153	-10.619	
Medium	0.016	0.757	V	0.000	464.000	mmho/m	625.992	-9.739	

#### Downhole Calibration

	Readings				References			Results	
	Zero	Cal			Zero	Cal		m'	b'
Deep	0.000	0.000	mmho/m	2.011	405.777	mmho/m	1.000	0.000	
Medium	0.000	0.000	mmho/m	7.590	503.393	mmho/m	1.000	0.000	

LL3	0.000	7.500	mmho/m	1500.000	mmho/m	0.000	0.000
		0.000	V	20.000	Ohm-m		
		-7.200	V	3800.000	mmho-m		

After Survey Verification		Readings		Targets		Results		
	Zero	Cal		Zero	Cal	m'	b'	
Deep	0.000	0.000	mmho/m	0.000	0.000	mmho/m	0.000	0.000
Medium	0.000	0.000	mmho/m	0.000	0.000	mmho/m	0.000	0.000
LL3		1.000	Ohm-m		1.000	Ohm-m		
		0.000	Ohm-m		0.000	Ohm-m		
		1.000	mmho-m		1.000	mmho-m		

Litho Density Calibration Report  
Serial: 004      Model: PRB

Master Calibration		Performed Fri Nov 04 15:19:59 2022			
	Background	Magnesium	Aluminum	Aluminum+Fe	
Window 1	1153.2	7232.1	2536.8	2279.5	cps
Window 2	1055.6	6225.5	2222.3	2030.5	cps
Window 3	902.5	3849.3	1546.4	1462.0	cps
Window 4	254.4	258.2	253.1	253.9	cps
Long Space	0.0	5169.9	1166.7	974.9	cps
Short Space	4.7	1383.0	950.5	792.1	cps
Rho		1.7100	2.5900	0.0000	g/cc
Pe		2.0000	2.7500	5.7900	
Rib Angle	: 45.9	Rib Slope	: 1.031	Density/Spine Ratio	: 0.573
Spine Angle	: 75.9	Spine Slope	: 3.970	Spine Intercept	: -20.2

Before Survey Verification		Performed Wed Dec 31 18:00:00 1969			
Window 1	0.0	0.0	0.0	0.0	cps
Window 2	0.0	0.0	0.0	0.0	cps
Window 3	0.0	0.0	0.0	0.0	cps
Window 4	0.0	0.0	0.0	0.0	cps
Long Space	0.0	0.0	0.0	0.0	cps
Short Space	0.0	0.0	0.0	0.0	cps
Measured Rho		0.0000	0.0000	0.0000	g/cc
Measured Correction		0.0000	0.0000	0.0000	g/cc
Measured Pe			0.0000	0.0000	

After Survey Verification		Performed Wed Dec 31 18:00:00 1969			
Window 1	0.0	0.0	0.0	0.0	cps
Window 2	0.0	0.0	0.0	0.0	cps
Window 3	0.0	0.0	0.0	0.0	cps
Window 4	0.0	0.0	0.0	0.0	cps
Long Space	0.0	0.0	0.0	0.0	cps
Short Space	0.0	0.0	0.0	0.0	cps
Measured Rho		0.0000	0.0000	0.0000	g/cc
Measured Correction		0.0000	0.0000	0.0000	g/cc
Measured Pe			0.0000	0.0000	

Compensated Neutron Calibration Report

CALIBRATION

Detector	Readings	Target	Normalization
Short Space	1.00 cps	1.00 cps	1.0000
Long Space	1.00 cps	1.00 cps	1.0000

PRE-SURVEY VERIFICATION

	Detector	Readings	Measured	Target
1)	Short Space	cps		
	Long Space	cps	pu	pu
2)	Short Space	cps		
	Long Space	cps	pu	
3)	Short Space	cps		
	Long Space	cps	pu	

POST-SURVEY VERIFICATION

	Detector	Readings	Measured	Target
1)	Short Space	cps		
	Long Space	cps	pu	pu
2)	Short Space	cps		
	Long Space	cps	pu	pu
3)	Short Space	cps		
	Long Space	cps	pu	pu

Gamma Ray Calibration Report

Serial Number: GR6  
 Tool Model: OPEN  
 Performed: Tue Nov 08 13:43:57 2022

Calibrator Value: 150.0 GAPI

Background Reading: 0.0 cps  
 Calibrator Reading: 276.0 cps

Sensitivity: 0.8500 GAPI/cps