

SONIC LOG



Company MERIDIAN ENERGY, INC.
 Well SIMON SAYS UNIT #1
 Field CLAP YOUR HANDS
 County RAWLINS
 State KANSAS

Company MERIDIAN ENERGY, INC.
 Well SIMON SAYS UNIT #1
 Field CLAP YOUR HANDS
 County RAWLINS State KANSAS

Location: API #: 15-153-21299-0000
 1460' FSL & 2020' FEL
 SE - SW - NW - SE
 SEC 7 TWP 5S RGE 33W
 Permanent Datum GROUND LEVEL Elevation 3171
 Log Measured From KELLY BUSHING 5' A.G.L.
 Drilling Measured From KELLY BUSHING
 Other Services
 CDL/CNL
 DIL/MEL
 Elevation
 K.B. 3176
 D.F. 3174
 G.L. 3171

Date	11/15/22
Run Number	TWO
Depth Driller	4735
Depth Logger	4734
Bottom Logged Interval	4726
Top Log Interval	300
Casing Driller	8 5/8"@308'
Casing Logger	308
Bit Size	7 7/8"
Type Fluid in Hole	CHEMICAL MUD
Density / Viscosity	9.4/53
pH / Fluid Loss	11.0/8.0
Source of Sample	FLOWLINE
Rm @ Meas. Temp	1.20@57F
Rmf @ Meas. Temp	.900@57F
Rmc @ Meas. Temp	1.44@57F
Source of Rmf / Rmc	.556@123F
Rm @ BHT	1.08@57F
Time Circulation Stopped	4 HOURS
Time Logger on Bottom	12:00 A.M.
Maximum Recorded Temperature	123F
Equipment Number	8916
Location	HAYS, KANSAS
Recorded By	JEFF LUEBBERS
Witnessed By	WESTON LAFON

<<< Fold Here >>>

All interpretations are opinions based on inferences from electrical or other measurements and we cannot and do not guarantee the accuracy or correctness of any interpretation, and we shall not, except in the case of gross or willful negligence on our part, be liable or responsible for any loss, costs, damages, or expenses incurred or sustained by anyone resulting from any interpretation made by any of our officers, agents or employees. These interpretations are also subject to our general terms and conditions set out in our current Price Schedule.

Comments

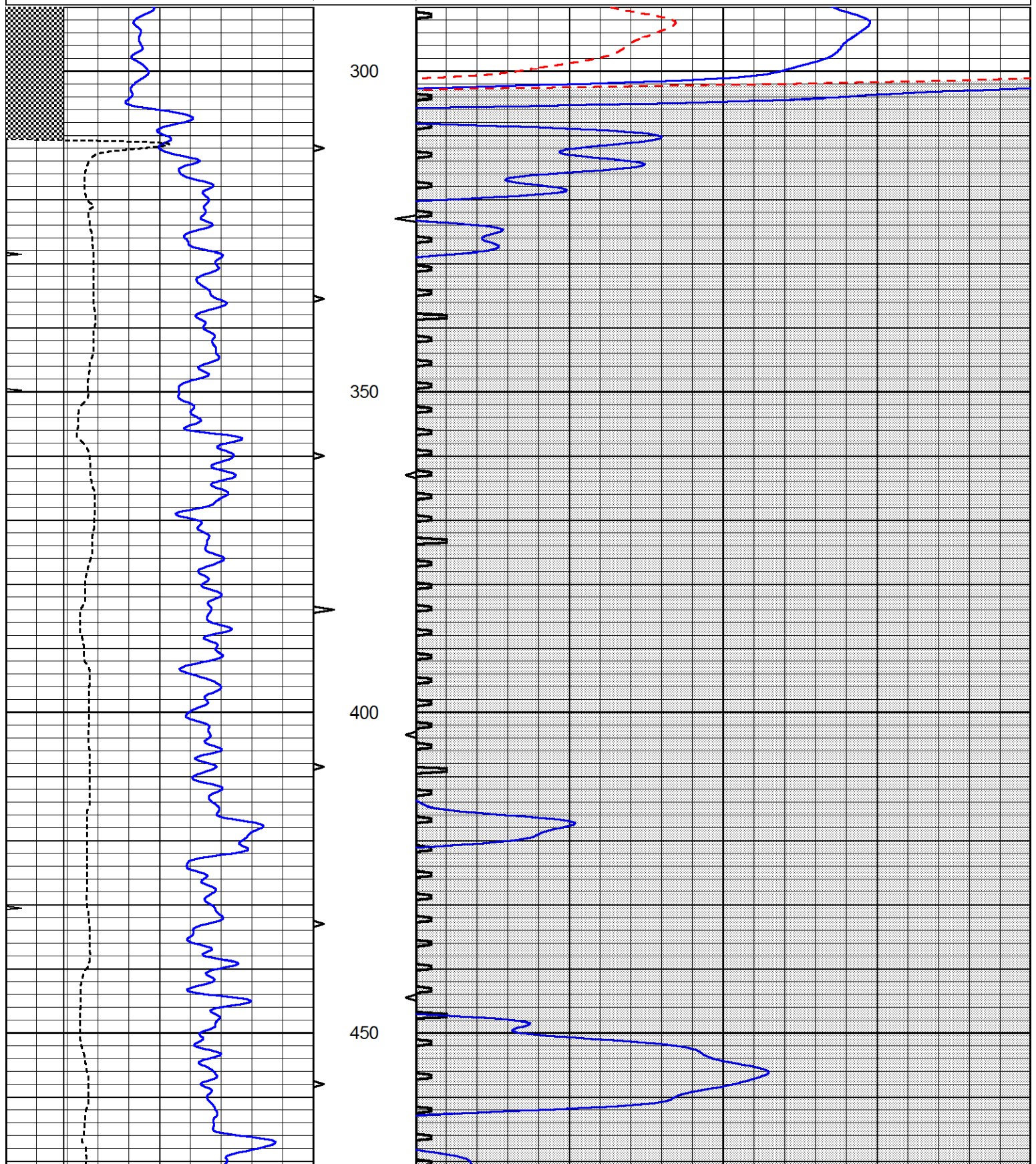
THANK YOU FOR USING ELI WIRELINE, HAYS, KS. (785) 628-6395
 DIRECTIONS:
 COLBY, KS., 16N. ON HWY 25 TO "RD. E", 1/4W., N. INTO

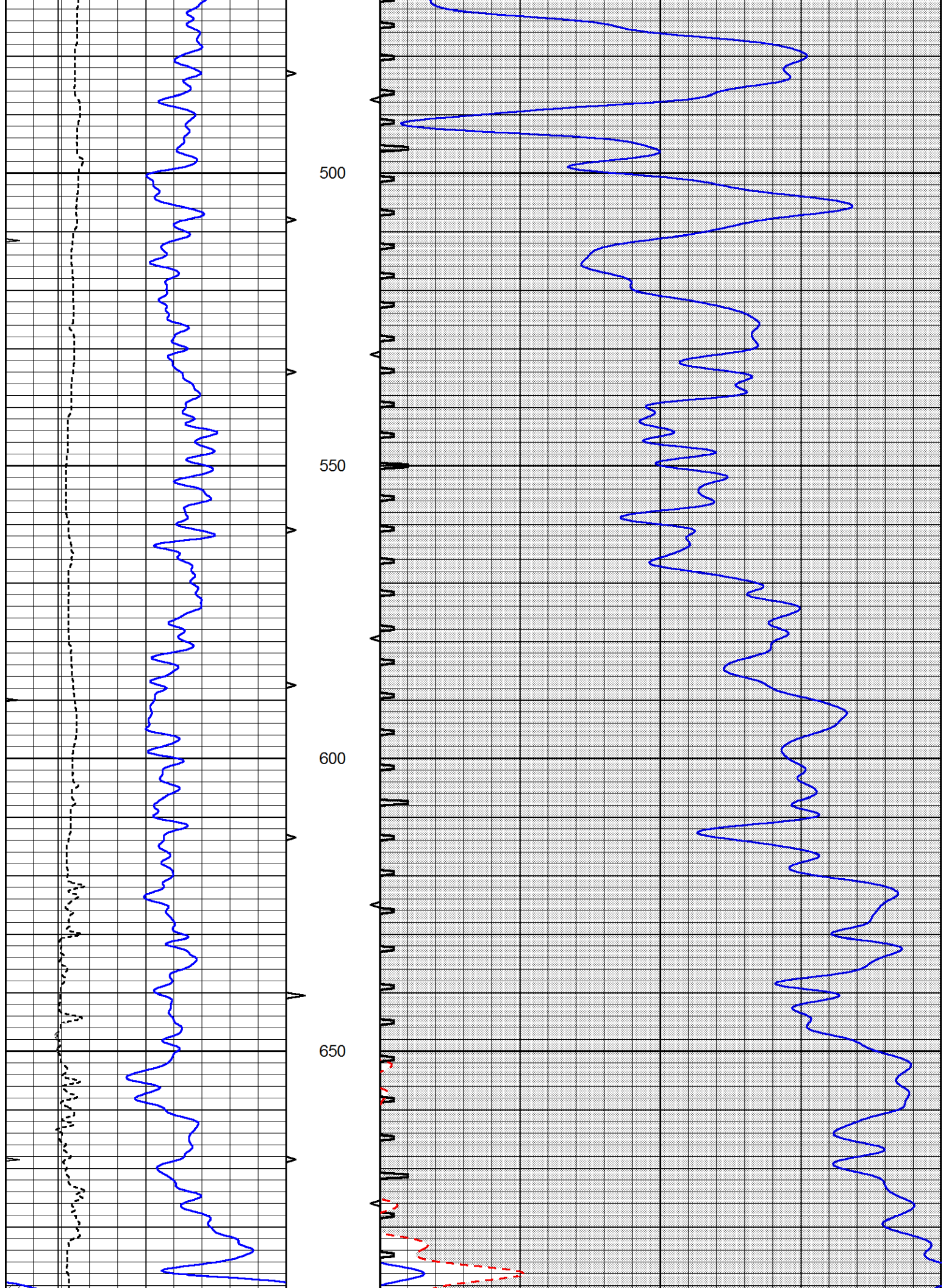


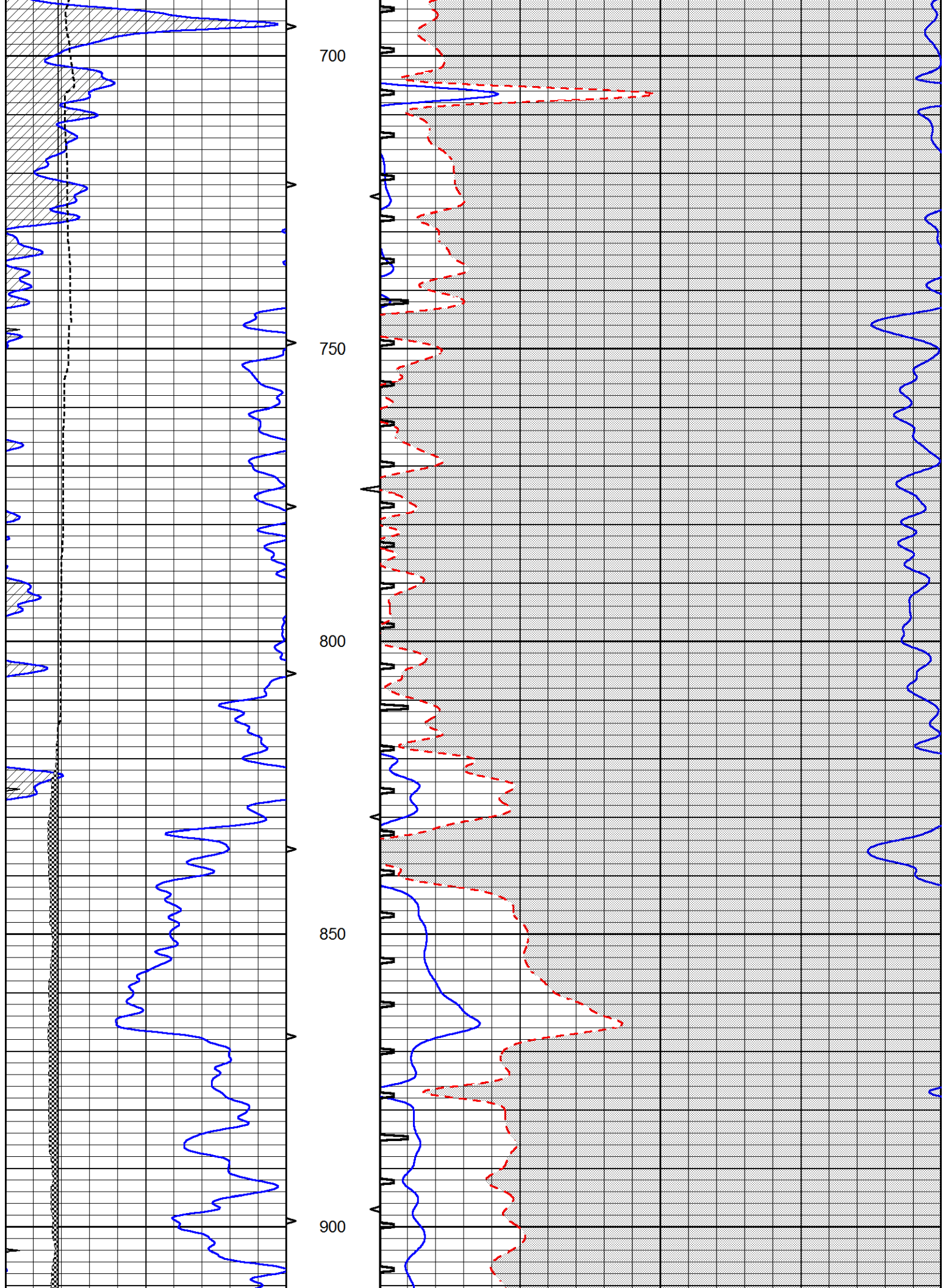
MAIN SECTION

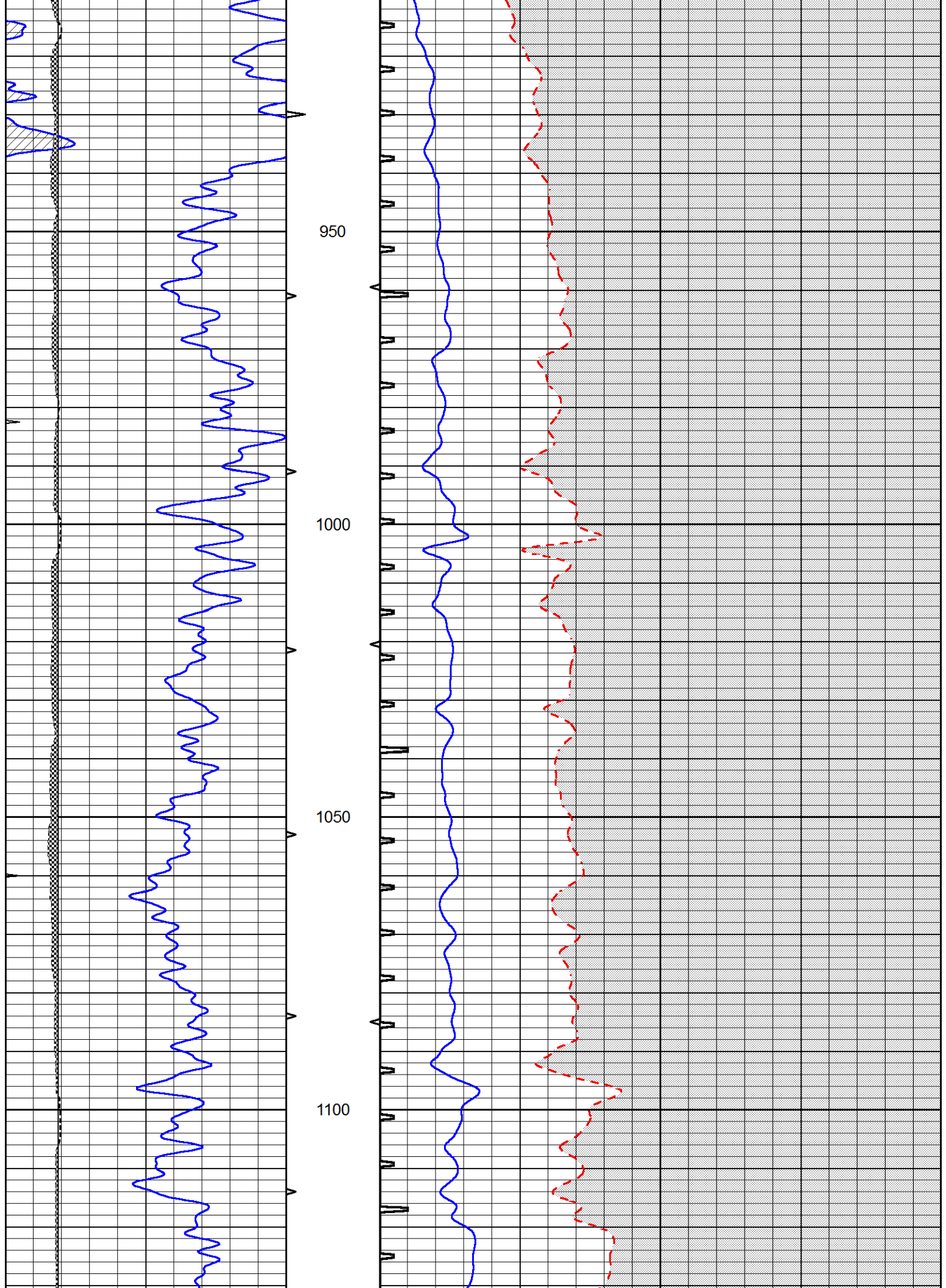
Database File 6721ddn.db
 Dataset Pathname pass6.8
 Presentation Format _slt
 Dataset Creation Tue Nov 15 01:51:30 2022
 Charted by Depth in Feet scaled 1:240

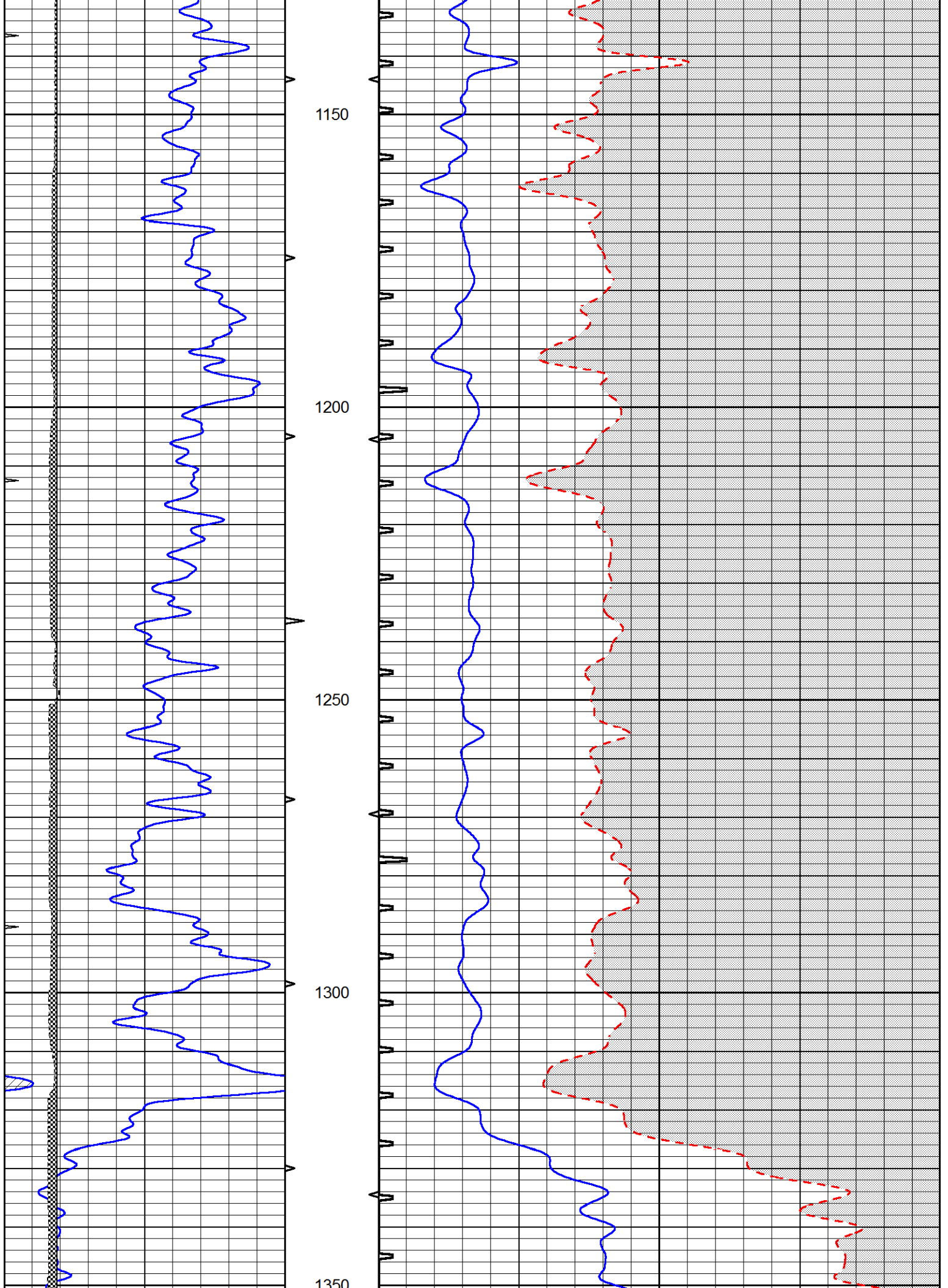
0	GAMMA RAY (GAPI)	150	ABHV	140	DELTA TIME (usec/ft)	40
0	MINMK	20	10 (ft3) 0	30	SONIC POROSITY (pu)	-10
6	MELCAL (in)	16	TBHV	0	ITT (msec)	20
			0 (ft3) 10			

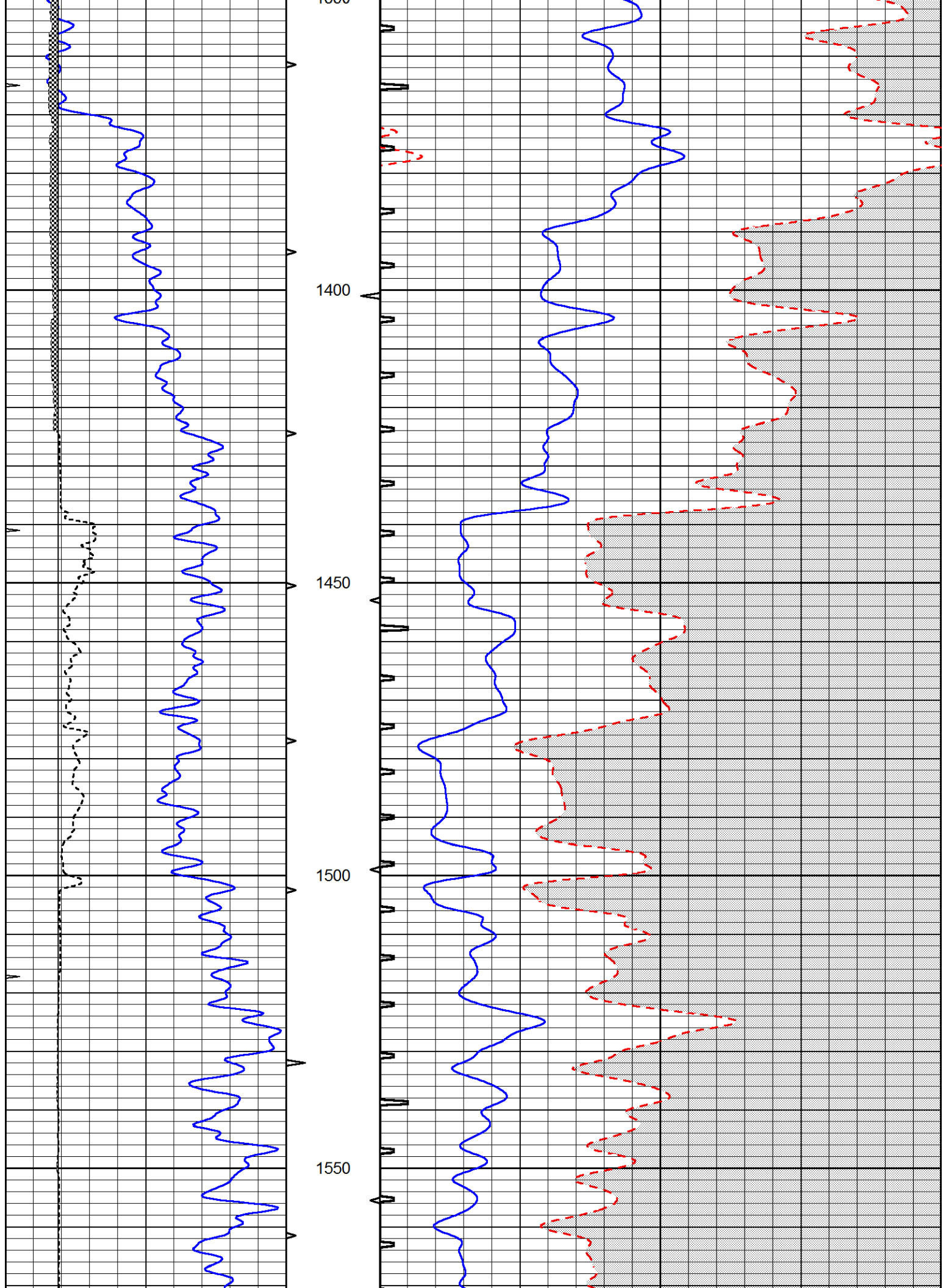


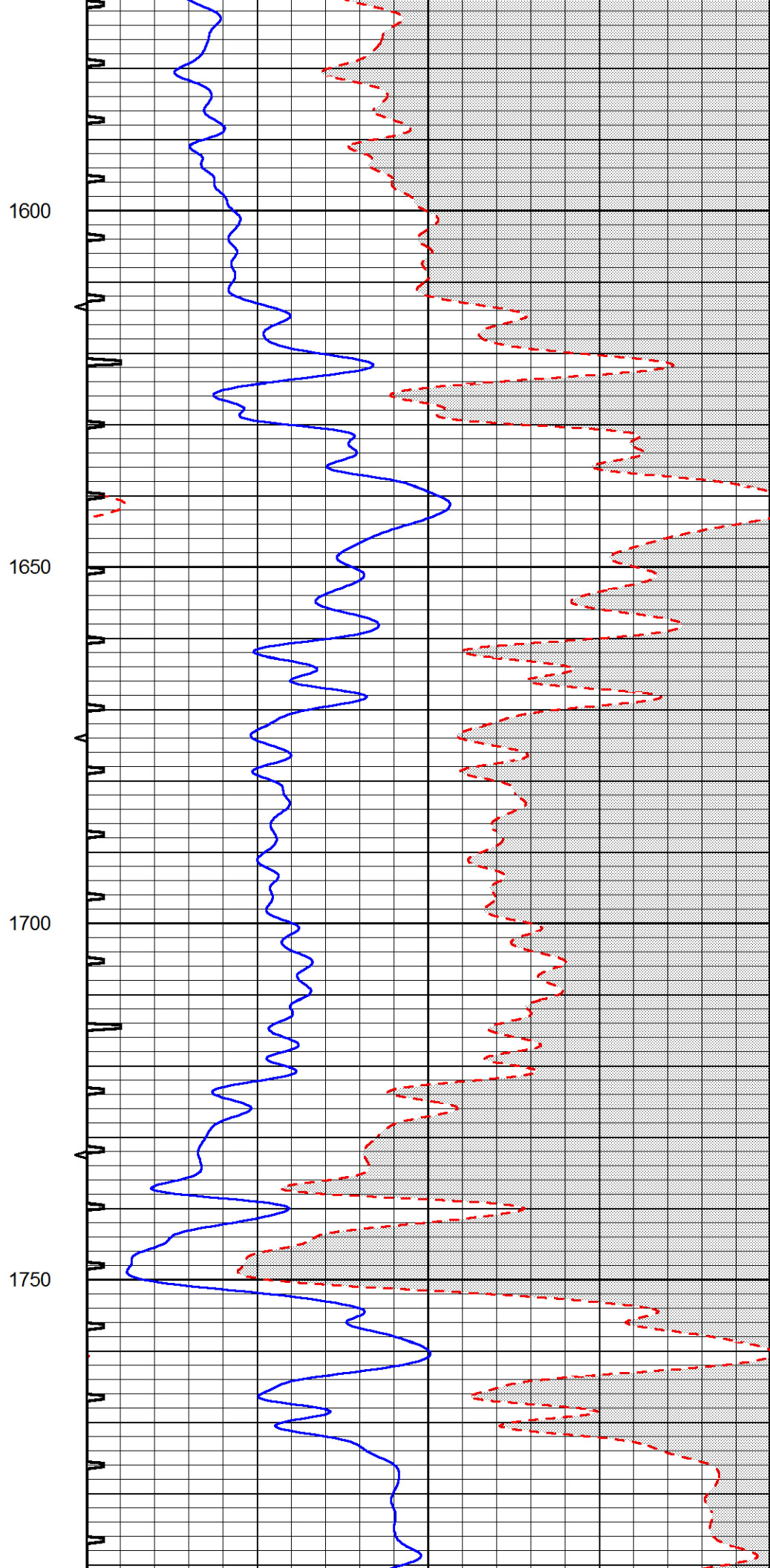
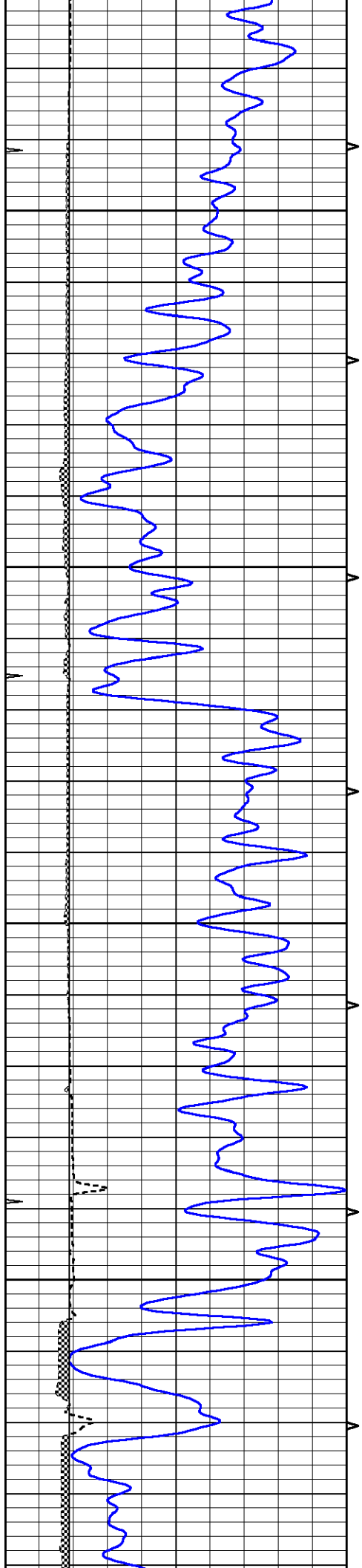


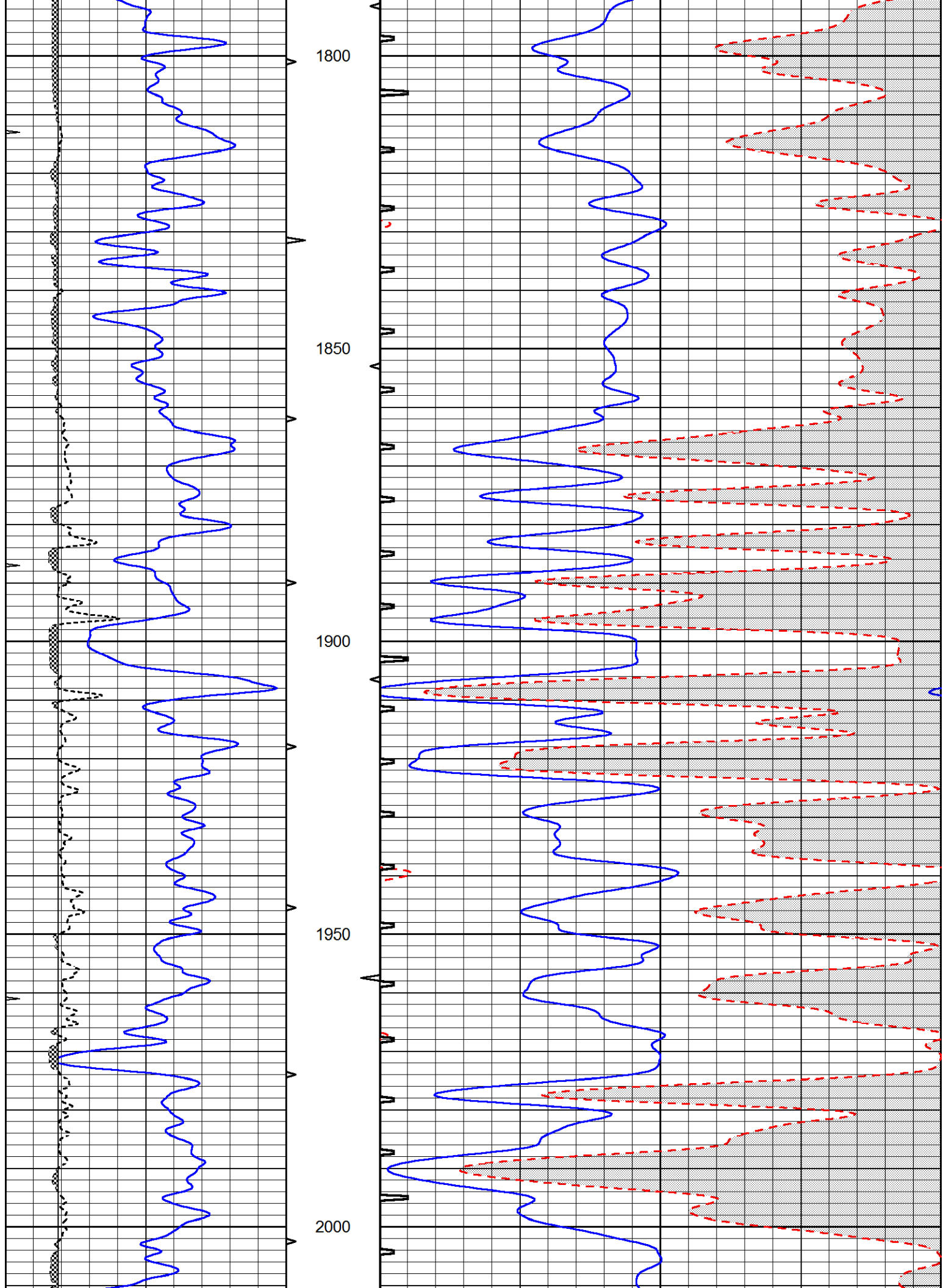


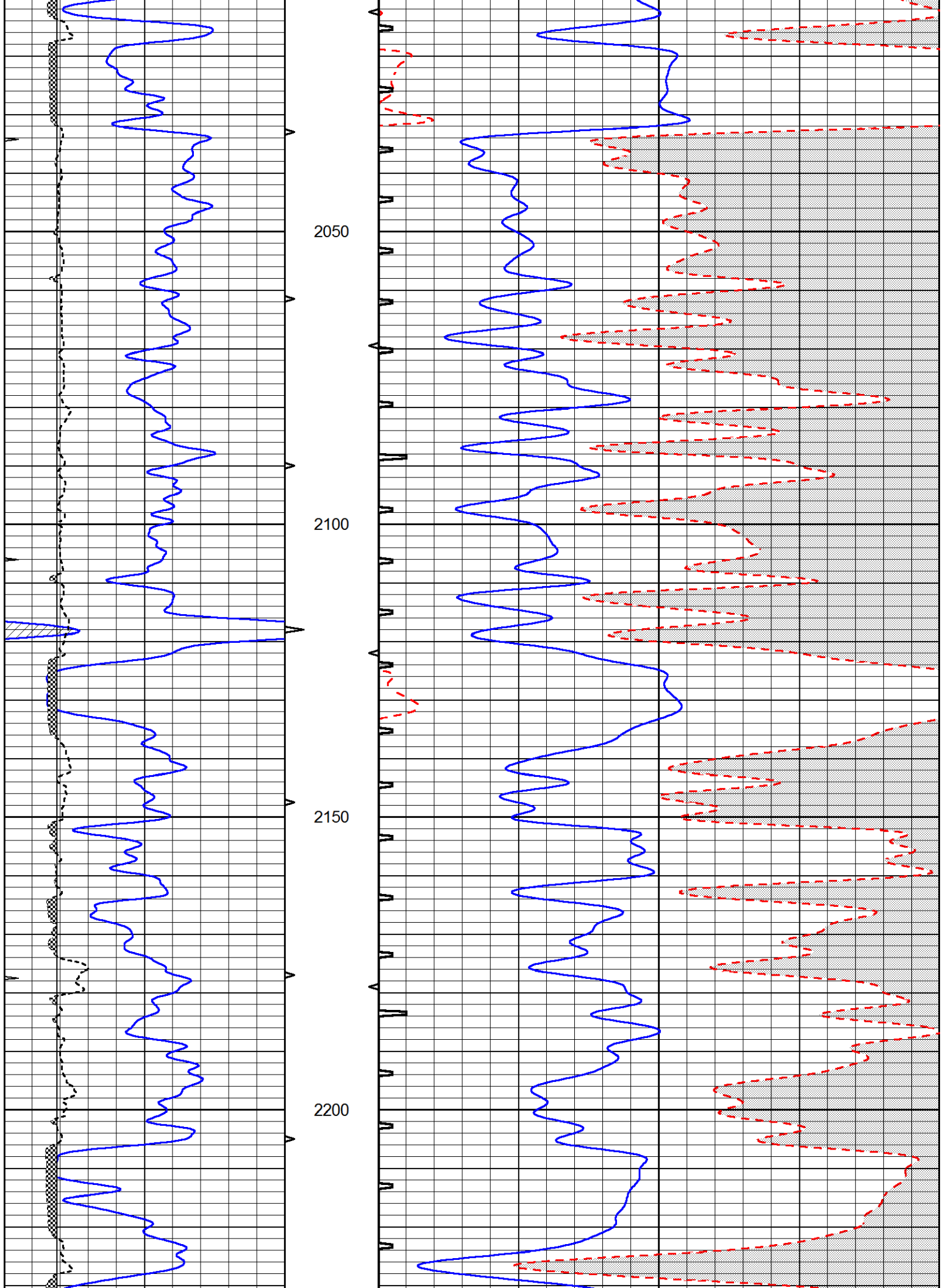


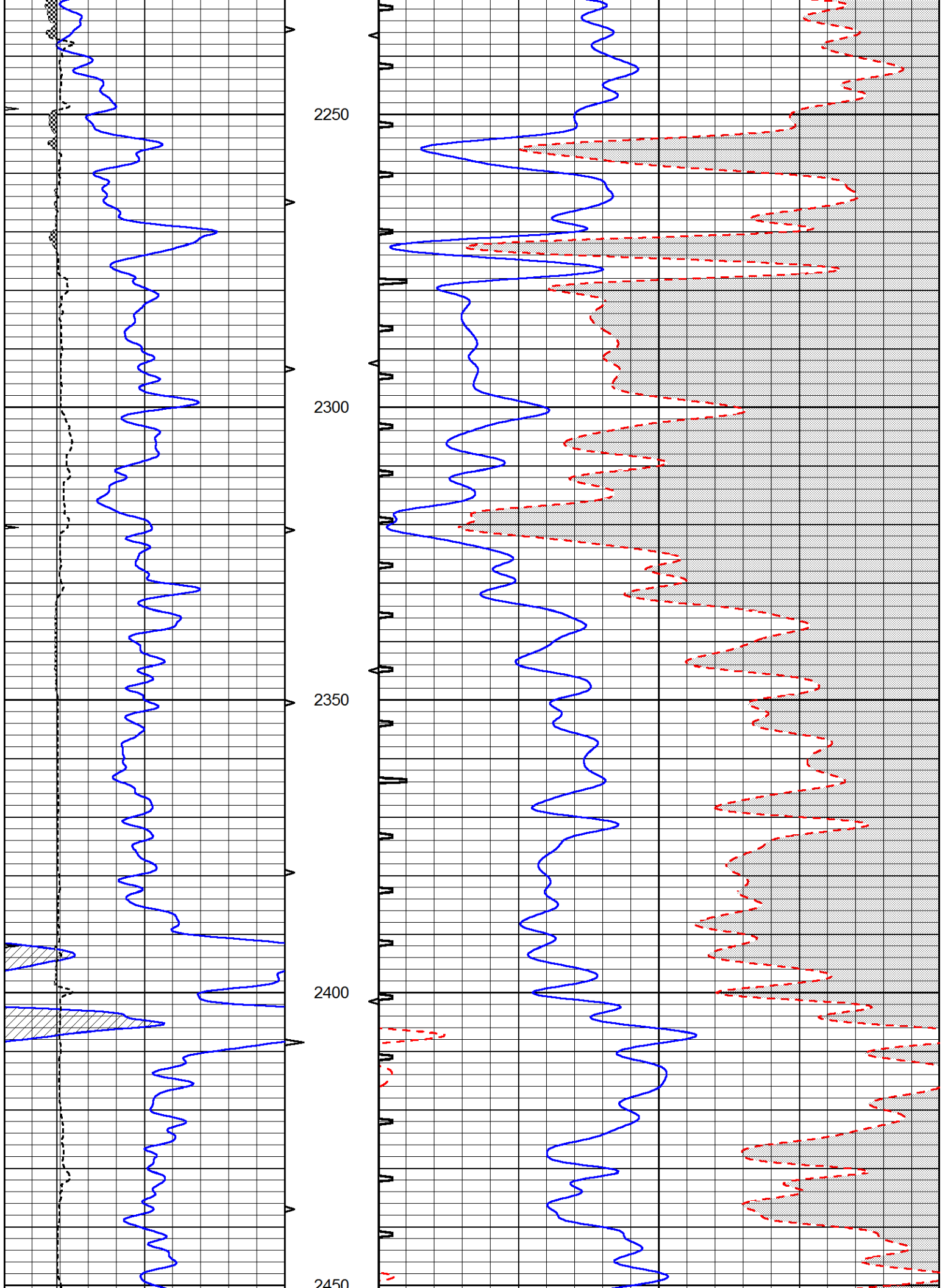


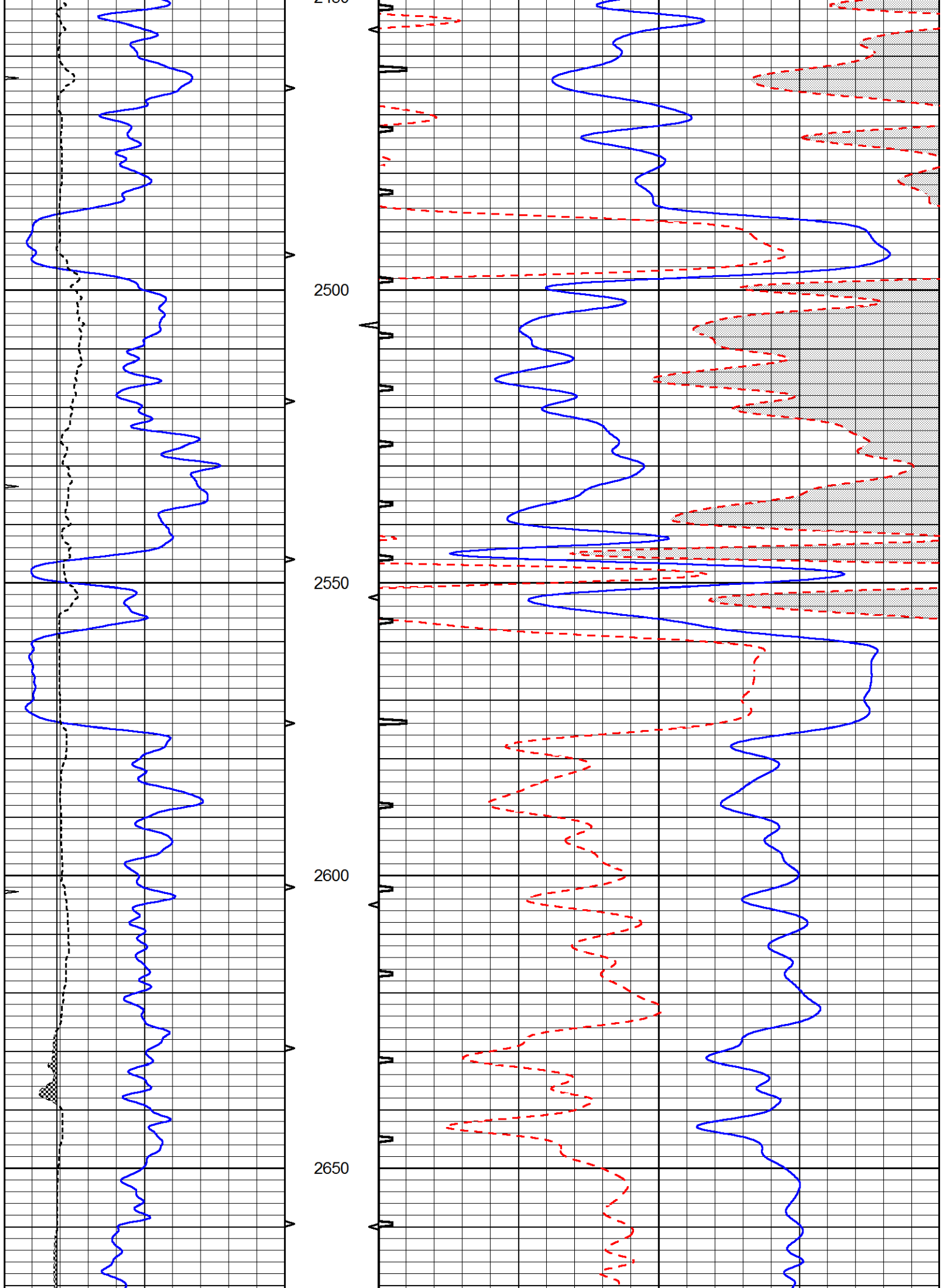


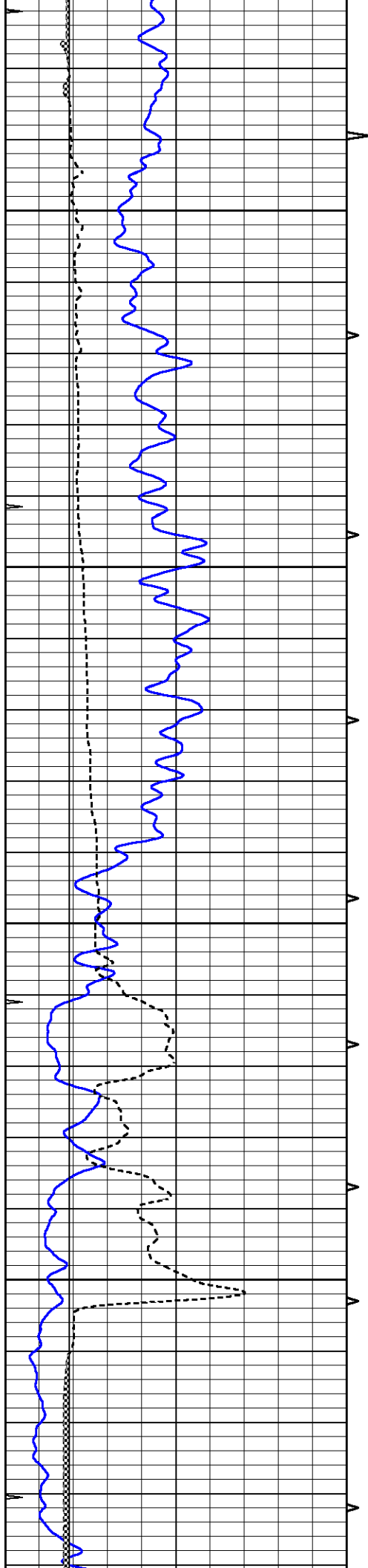










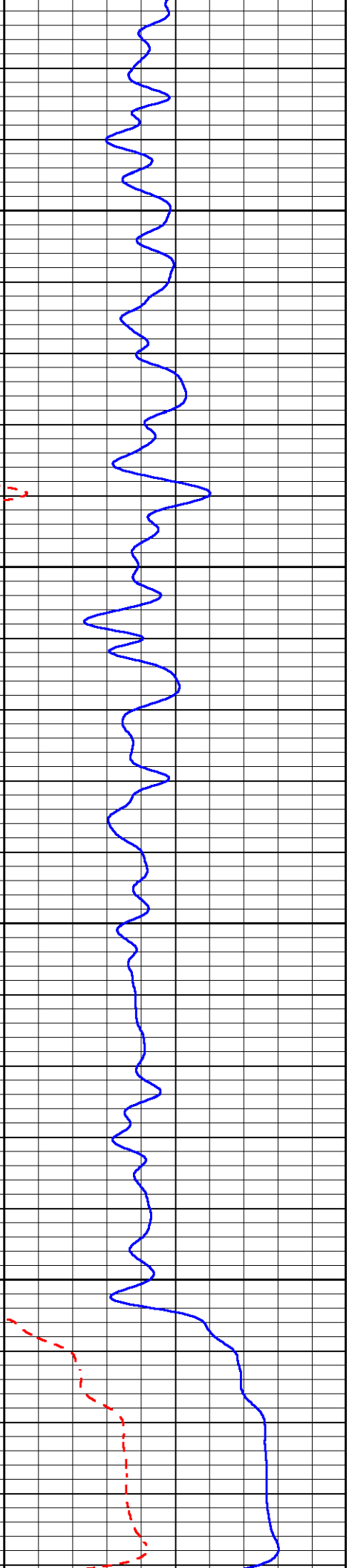
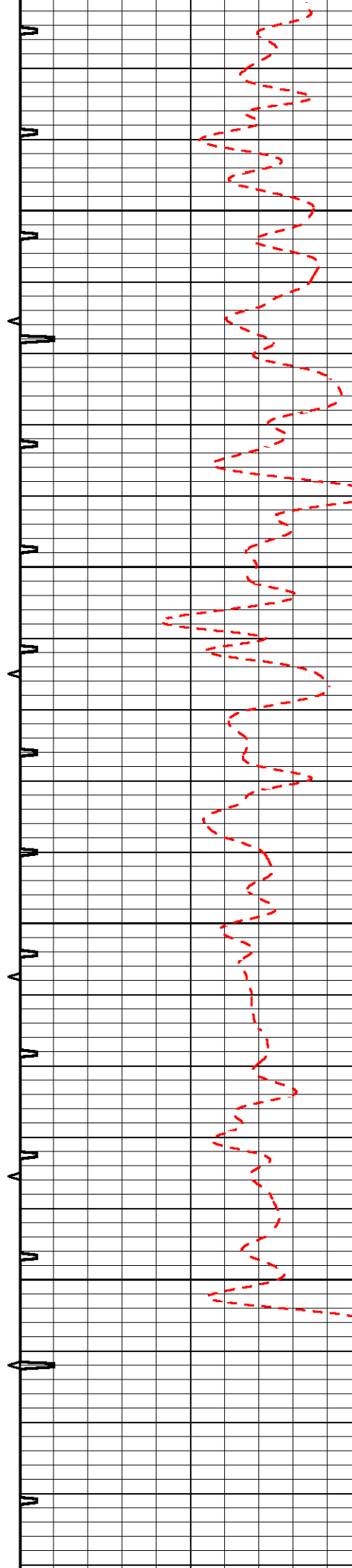


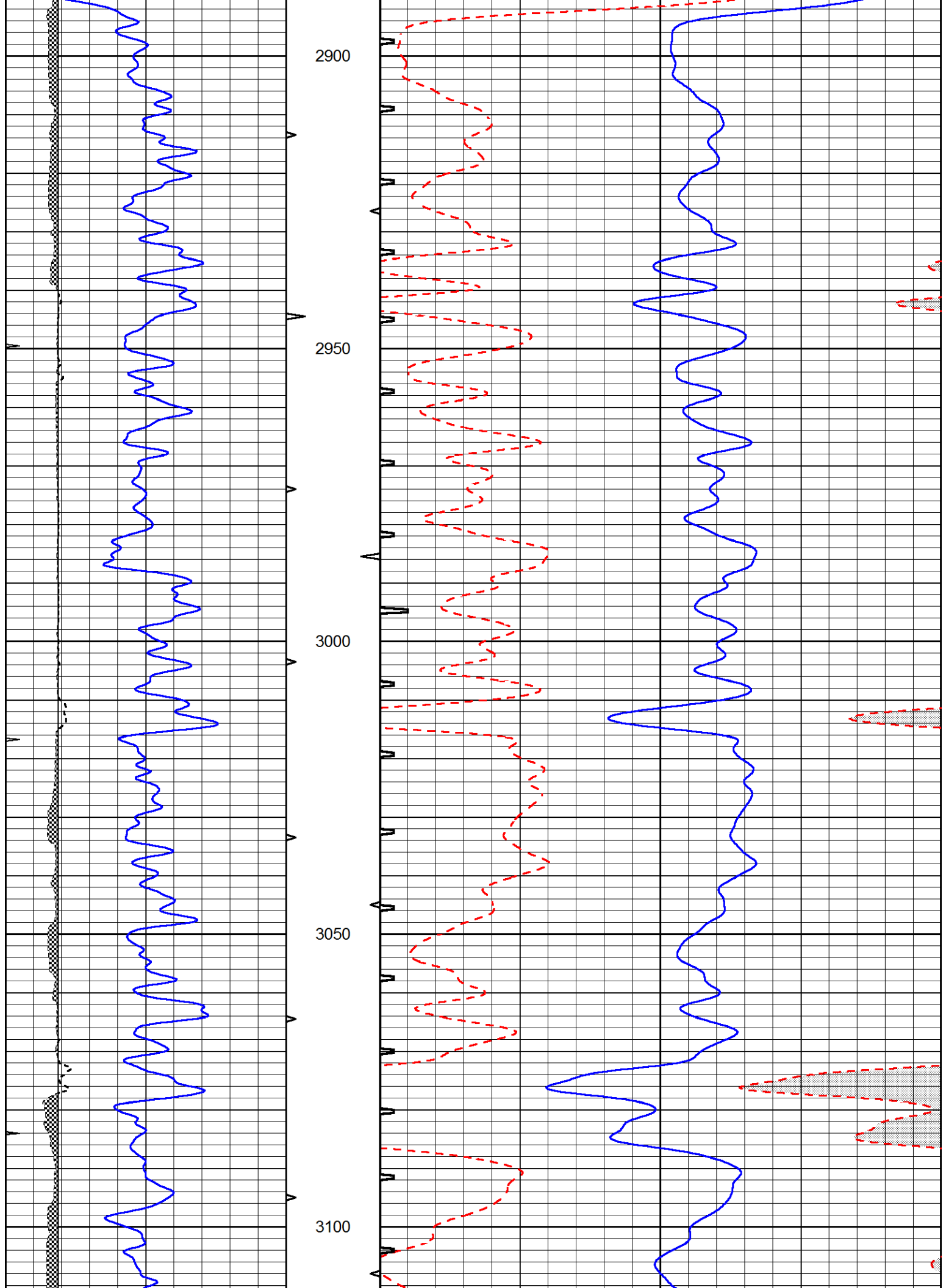
2700

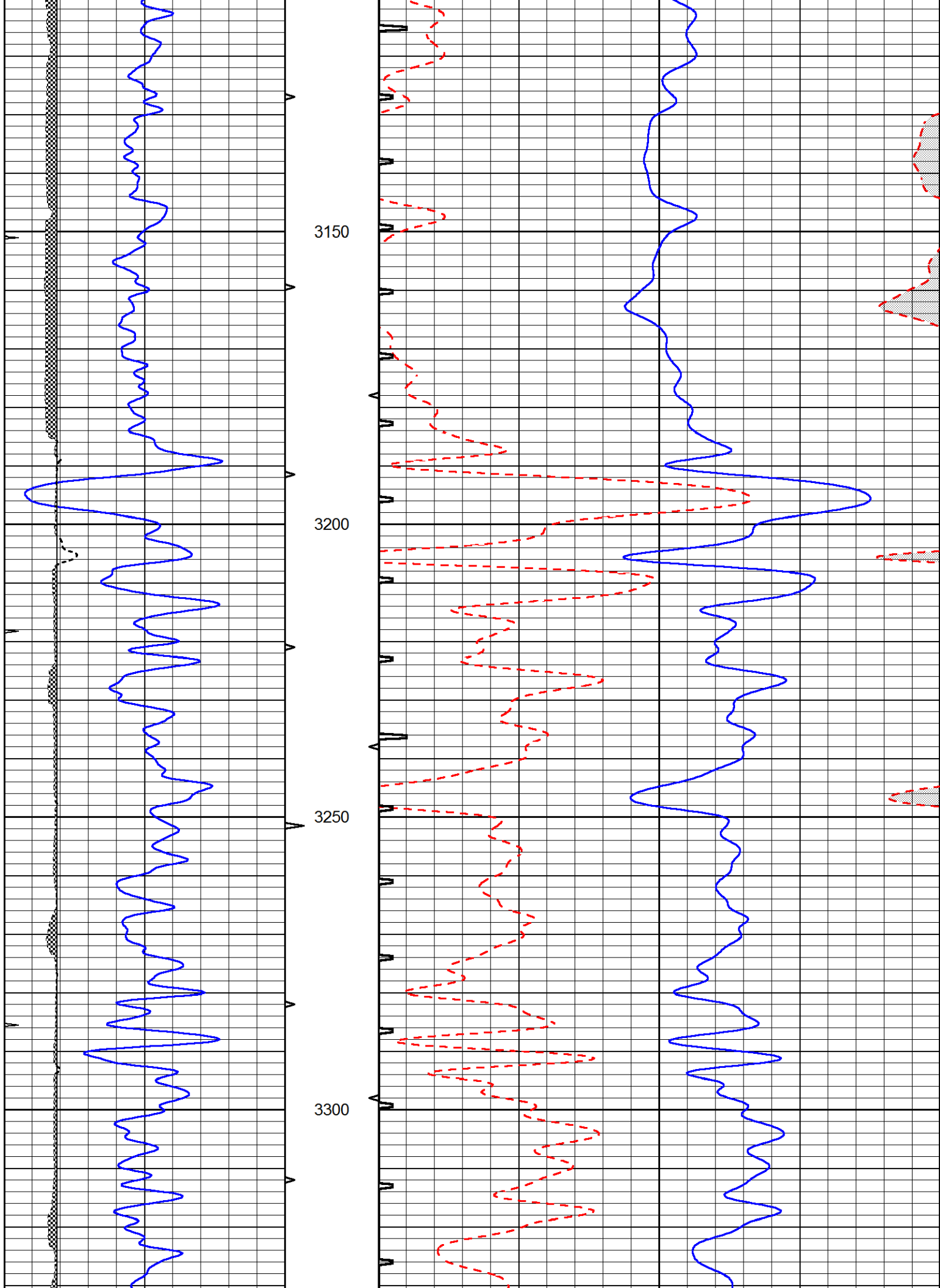
2750

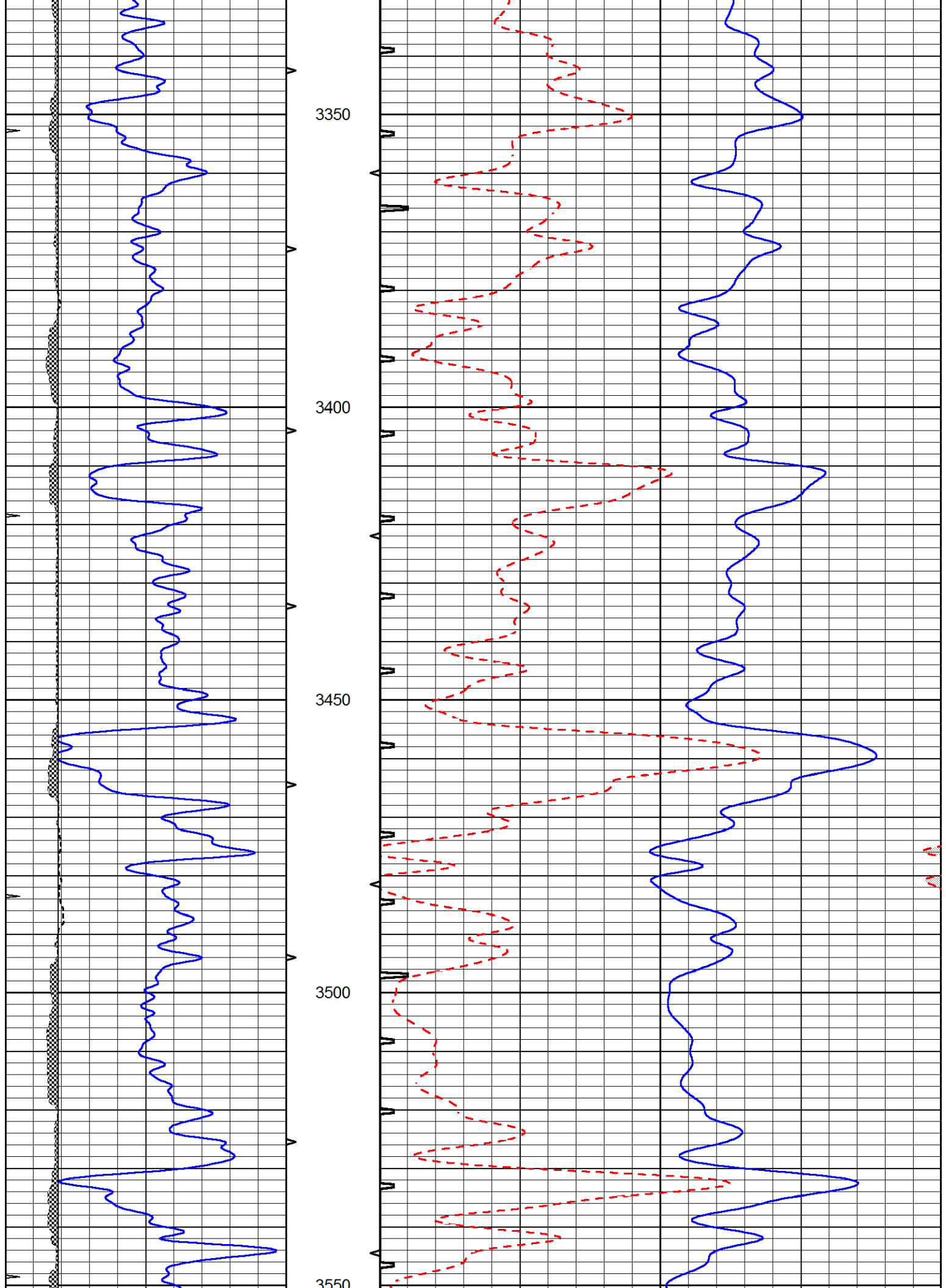
2800

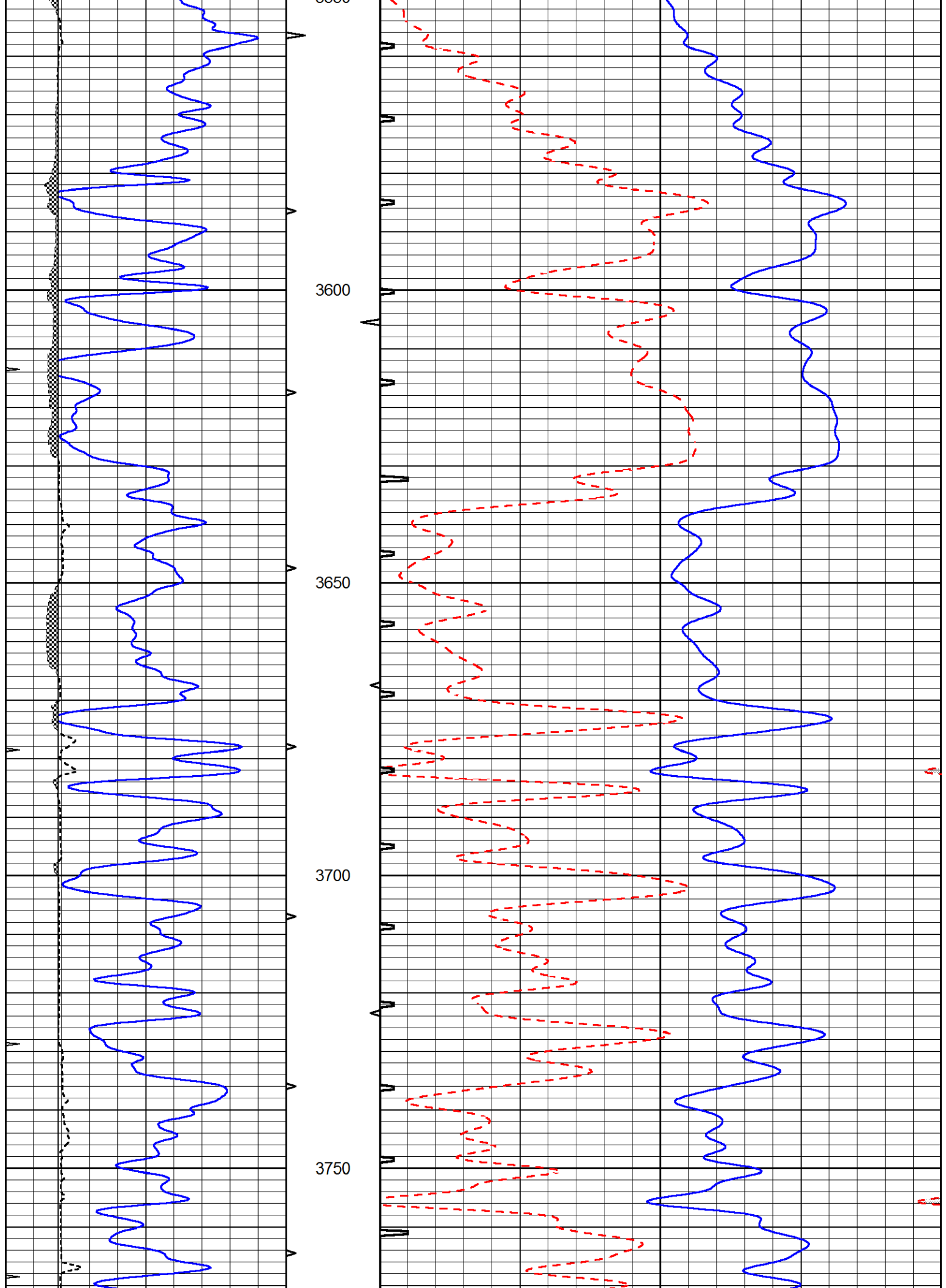
2850

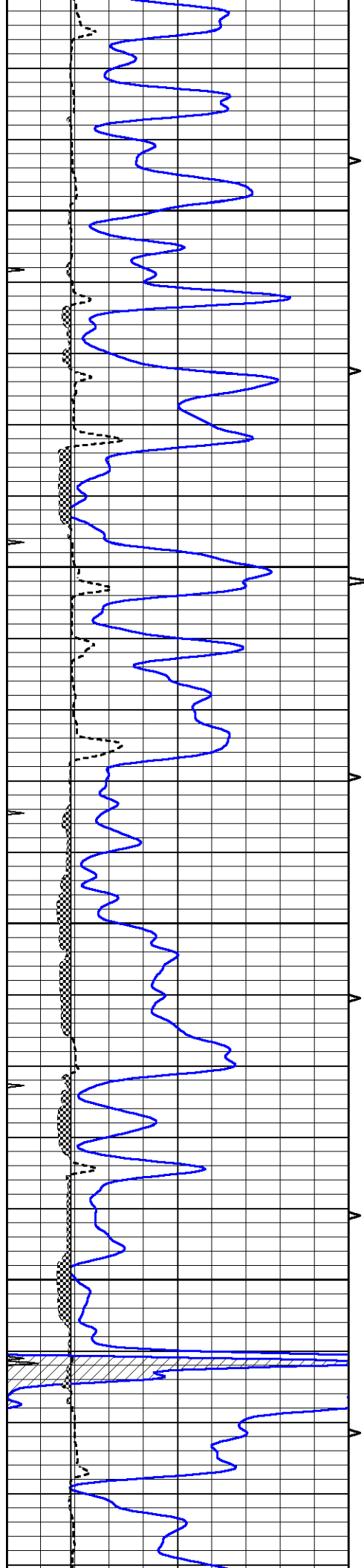










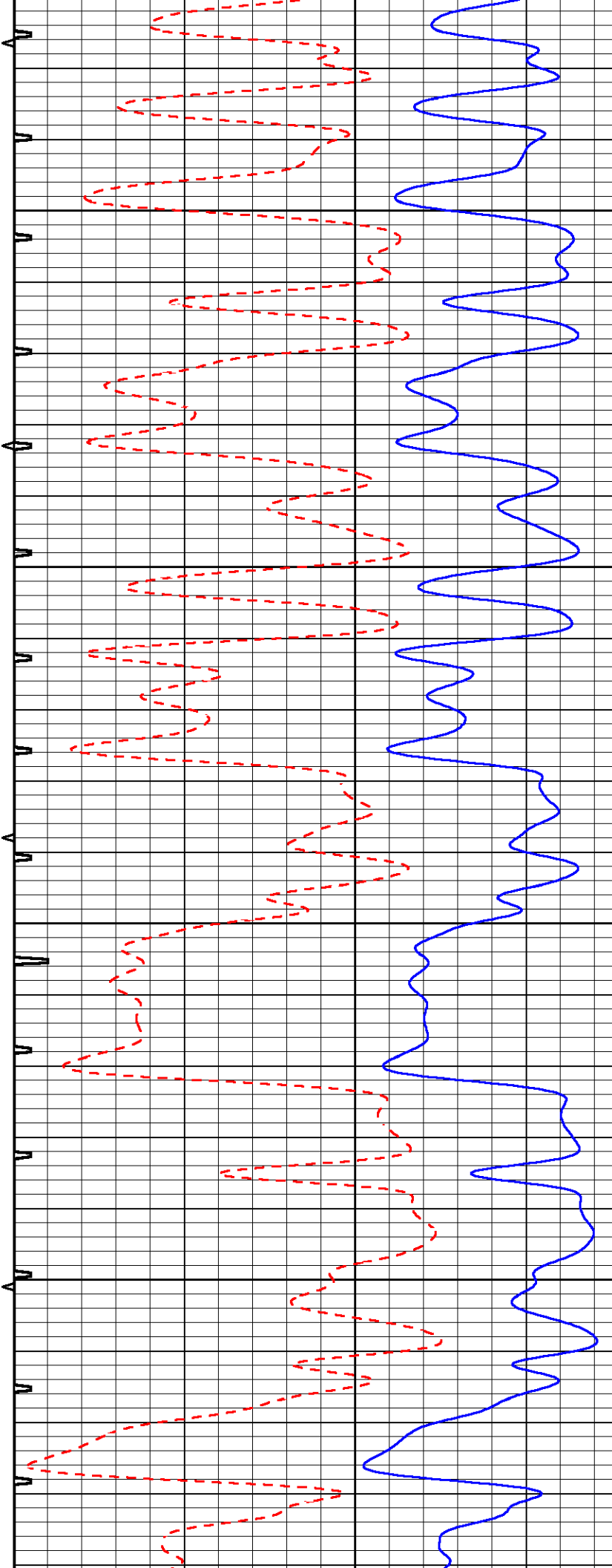


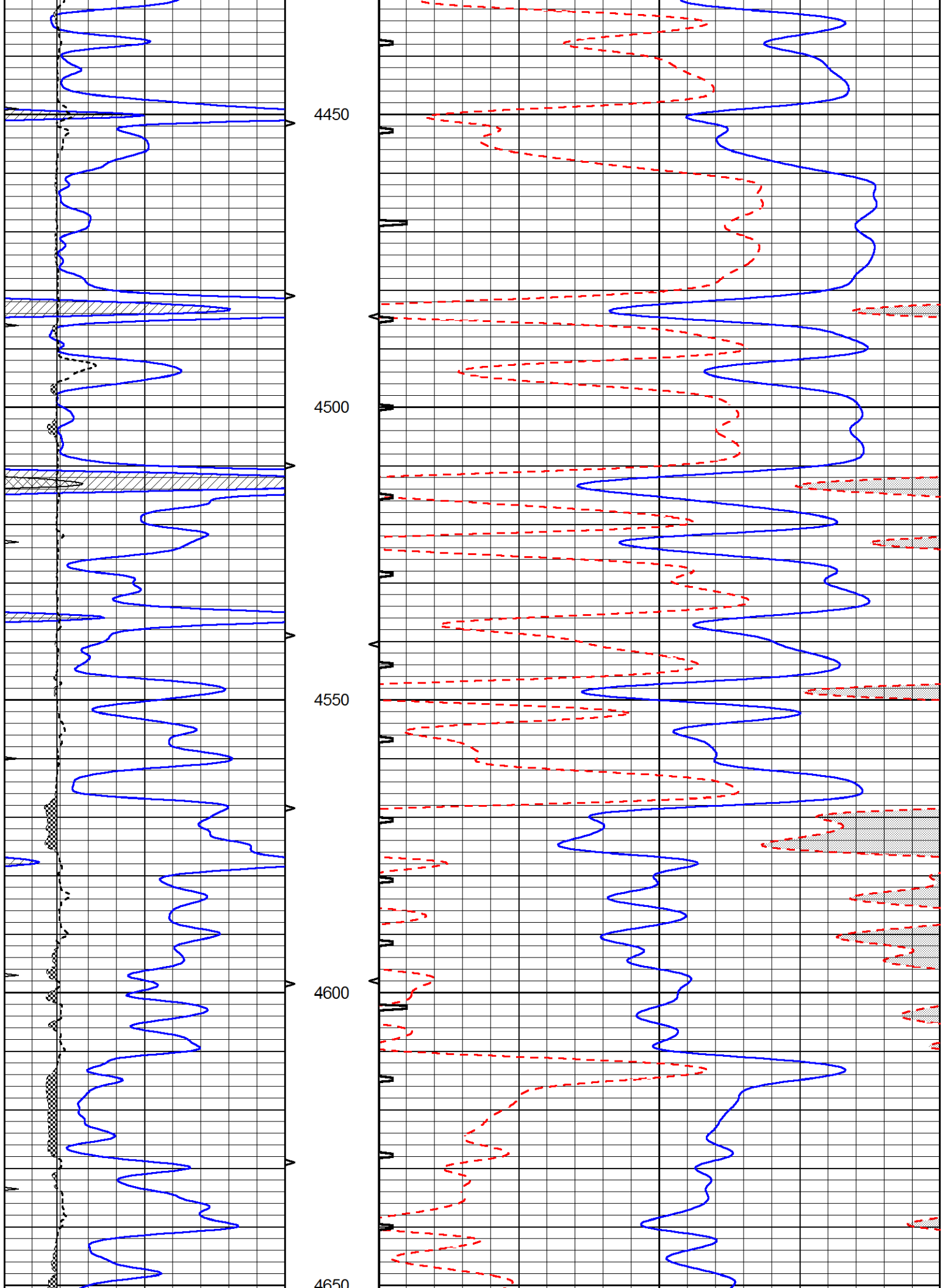
3800

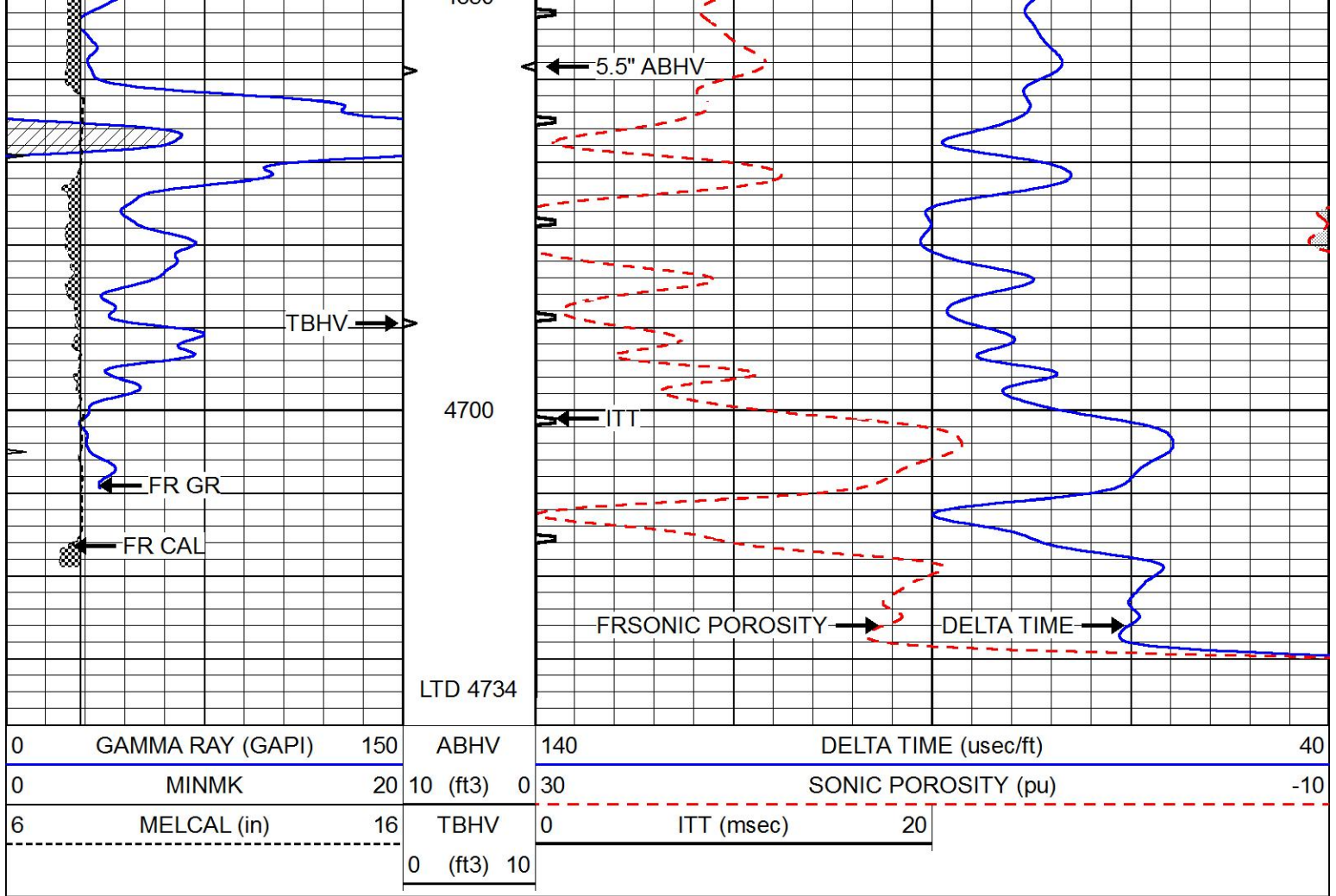
3850

3900

3950



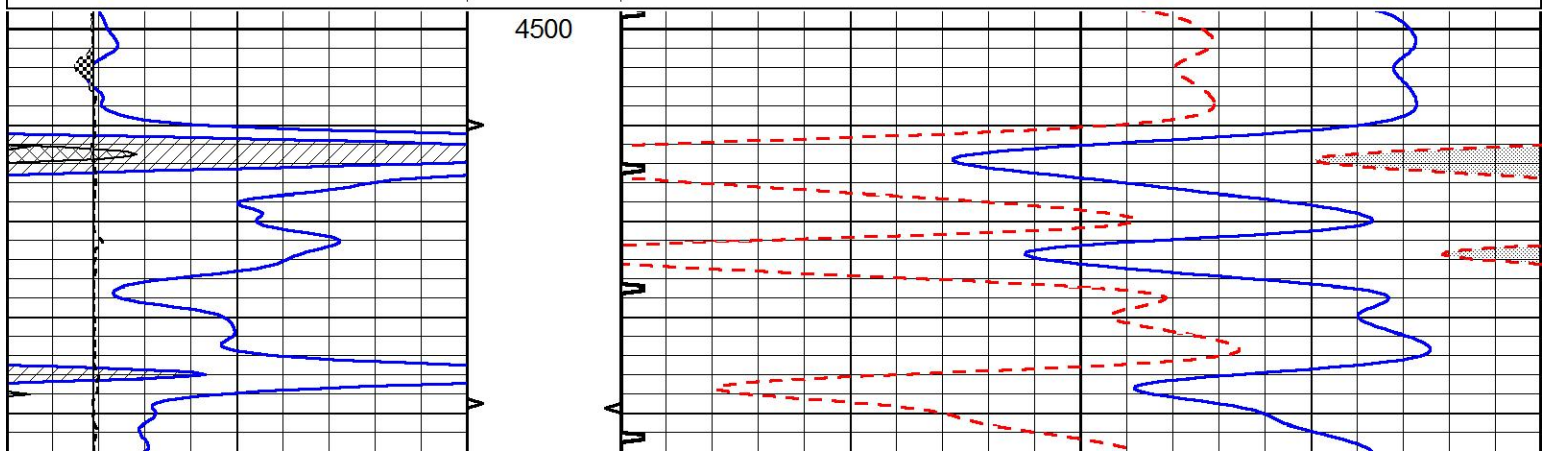


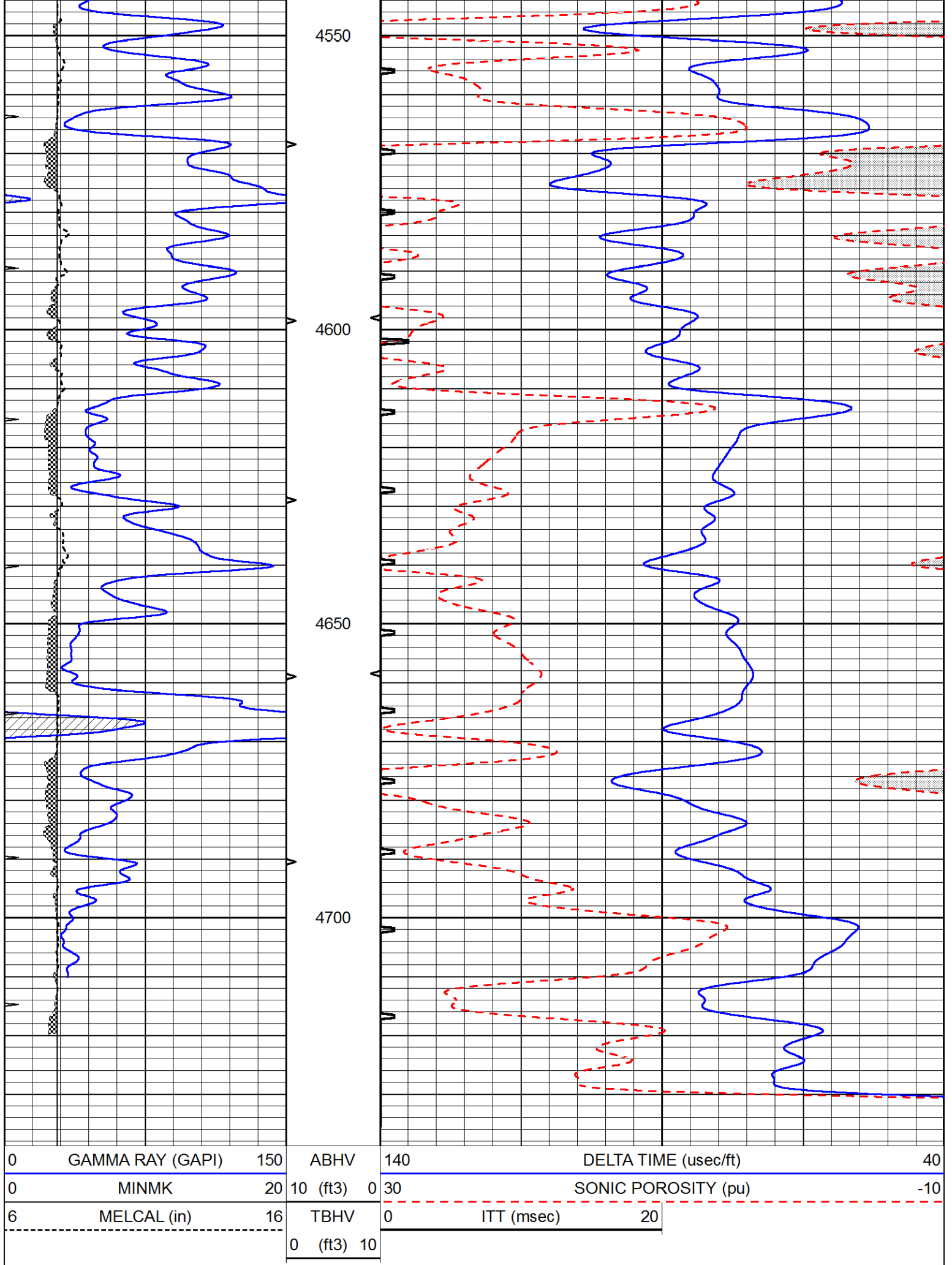


REPEAT SECTION

Database File 6721ddn.db
 Dataset Pathname pass5.3
 Presentation Format _slt
 Dataset Creation Tue Nov 15 00:57:18 2022
 Charted by Depth in Feet scaled 1:240

0	GAMMA RAY (GAPI)	150	ABHV	140	DELTA TIME (usec/ft)	40
0	MINMK	20	10 (ft3) 0	30	SONIC POROSITY (pu)	-10
6	MELCAL (in)	16	TBHV	0	ITT (msec)	20
			0 (ft3) 10			





0	GAMMA RAY (GAPI)	150	ABHV	140	DELTA TIME (usec/ft)	40	
0	MINMK	20	10 (ft3)	0	30	SONIC POROSITY (pu)	-10
6	MELCAL (in)	16	TBHV	0	ITT (msec)	20	
			0 (ft3)	10			