

MICRO LOG



Company TRANS - PACIFIC OIL CORPORATION
 Well THOMPSON "A" #1-32
 Field CARMICHAEL
 County ROOKS State KANSAS

Location: 2268' FSL & 1309' FEL
 SW - NW - NE - SE
 API #: 15-163-24481-0000
 Permanent Datum GROUND LEVEL Elevation 2044
 Log Measured From KELLY BUSHING 7' A.G.L.
 Drilling Measured From KELLY BUSHING
 Other Services CDL/CNL/PE DIL
 Elevation
 K.B. 2051
 D.F. 2049
 G.L. 2044

Date	8/23/23		
Run Number	TWO		
Depth Driller	3600		
Depth Logger	3602		
Bottom Logged Interval	3600		
Top Log Interval	2800		
Casing Driller	8 5/8"@222		
Casing Logger	222		
Bit Size	7 7/8"		
Type Fluid in Hole	CHEMICAL MUD	CHLORIDES 3,000 PPM	
Density / Viscosity	9.3/55		
pH / Fluid Loss	10.0/7.8		
Source of Sample	FLOWLINE		
Rm @ Meas. Temp	.950@89F		
Rmf @ Meas. Temp	.713@89F		
Rmc @ Meas. Temp	1.14@89F		
Source of Rmf / Rmc	MEASUREMENT		
Rm @ BHT	.756@112F		
Time Circulation Stopped	3.5 HOURS		
Time Logger on Bottom	2:30 P.M.		
Maximum Recorded Temperature	112F		
Equipment Number	922339		
Location	HAYS, KANSAS		
Recorded By	JEFF LUEBBERS		
Witnessed By	NICK HIXON		

<<< Fold Here >>>

All interpretations are opinions based on inferences from electrical or other measurements and we cannot and do not guarantee the accuracy or correctness of any interpretation, and we shall not, except in the case of gross or willful negligence on our part, be liable or responsible for any loss, costs, damages, or expenses incurred or sustained by anyone resulting from any interpretation made by any of our officers, agents or employees. These interpretations are also subject to our general terms and conditions set out in our current Price Schedule.

15-163-24481-0000 Comments

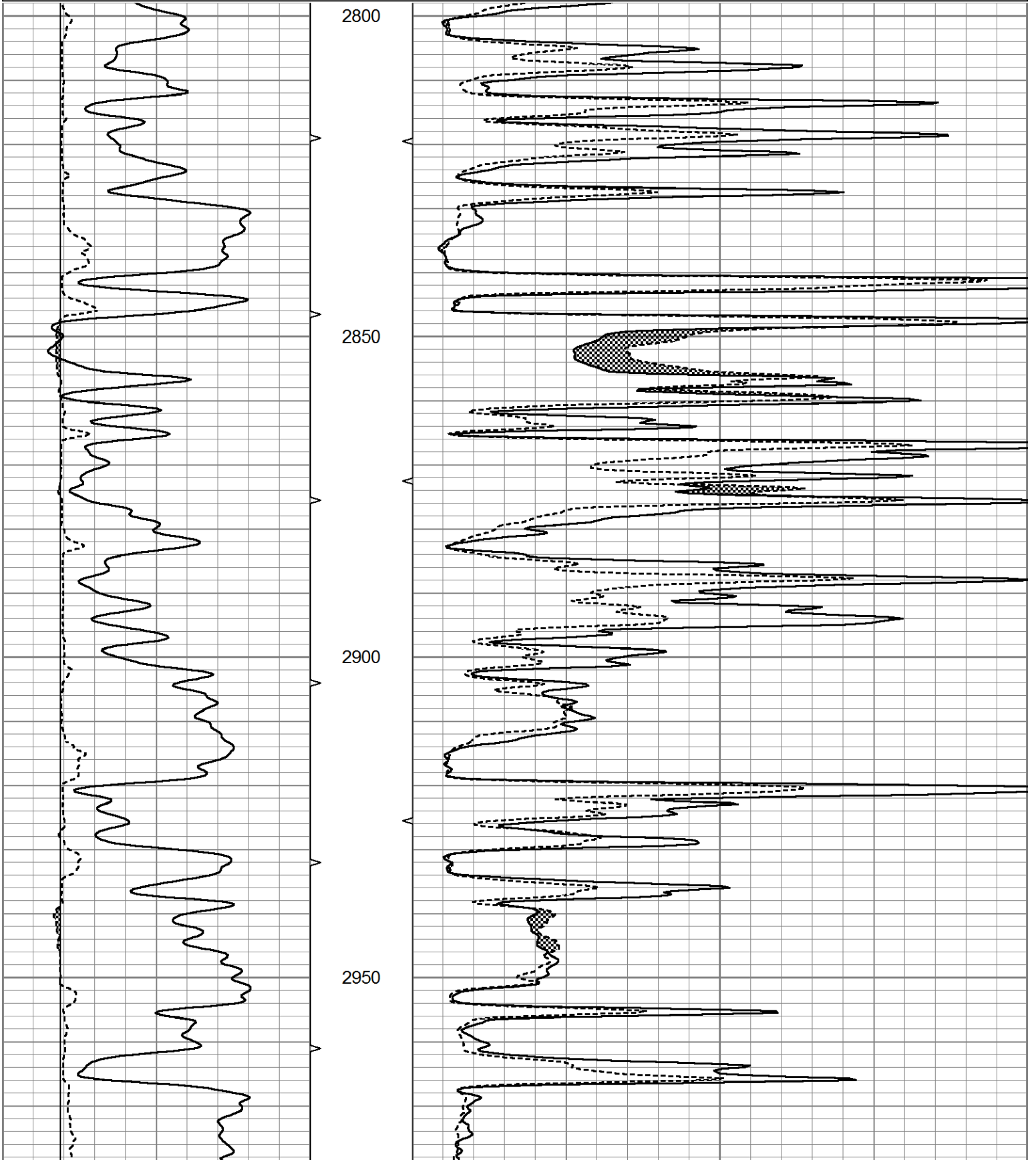
THANK YOU FOR USING ELI WIRELINE HAYS, KANSAS (785) 628-6395
 DIRECTIONS
 PLAINVILLE, KS., 5N. OM HWY 183 TO "RD. S"(COUNTRY CLUB) 3W., 1/2N., W. INTO

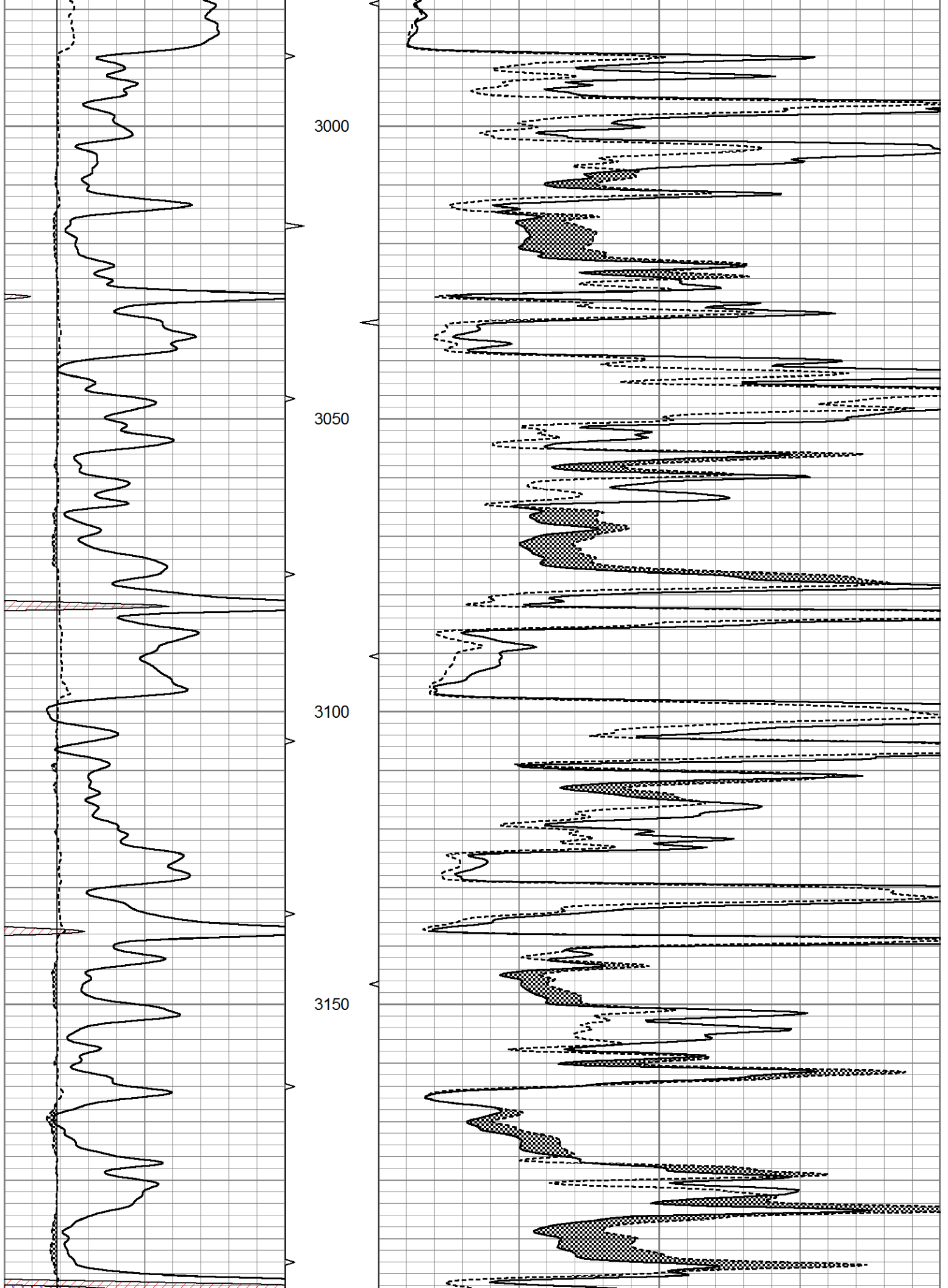


MAIN SECTION

Database File 7325pe.db
 Dataset Pathname pass6.2
 Presentation Format micro
 Dataset Creation Wed Aug 23 15:05:24 2023
 Charted by Depth in Feet scaled 1:240

0	GR (GAPI)	150	ABHV	0	MEL20 (Ohm-m)	40
6	MELCAL (in)	16	10 (ft3)	0	MEL15 (Ohm-m)	40
			ABHV			
			0 (ft3)	10		







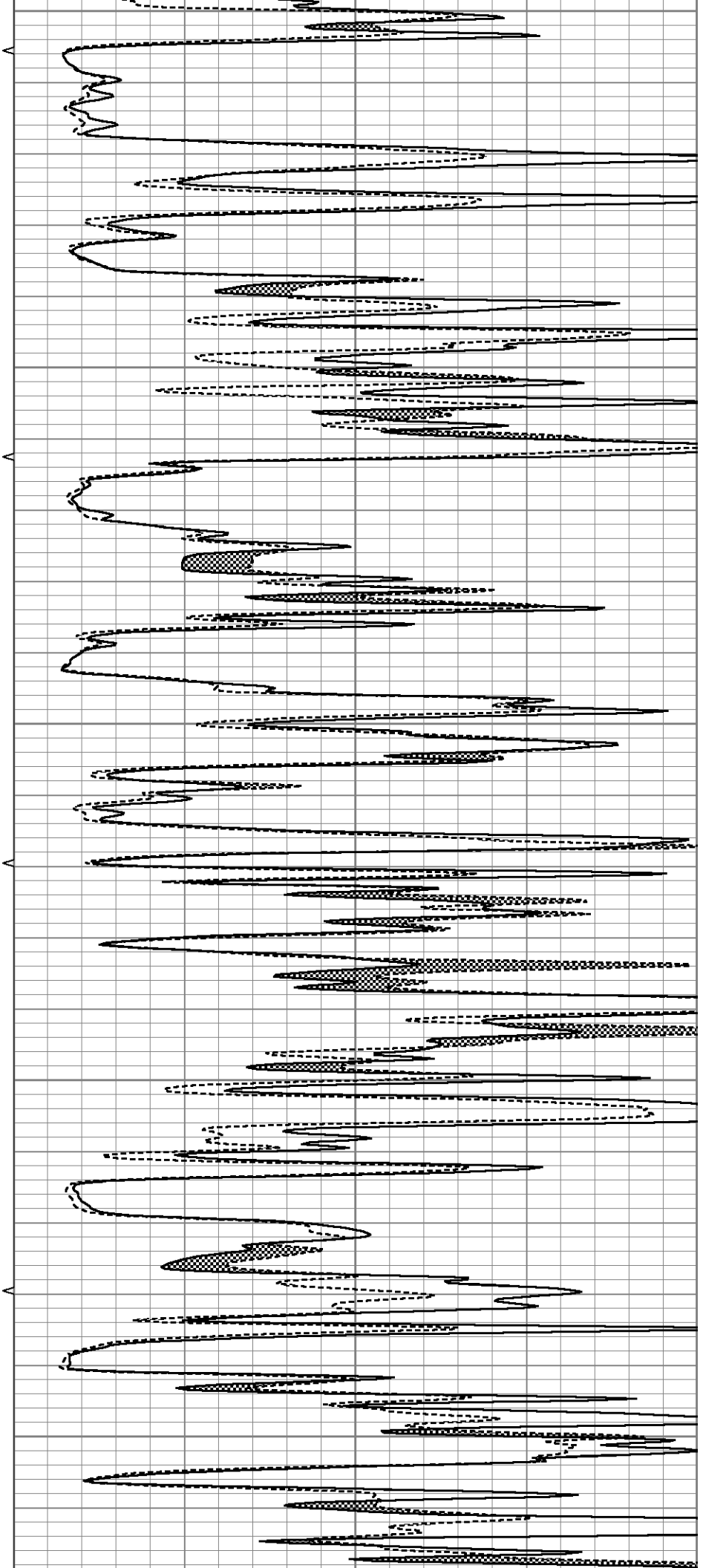
3200

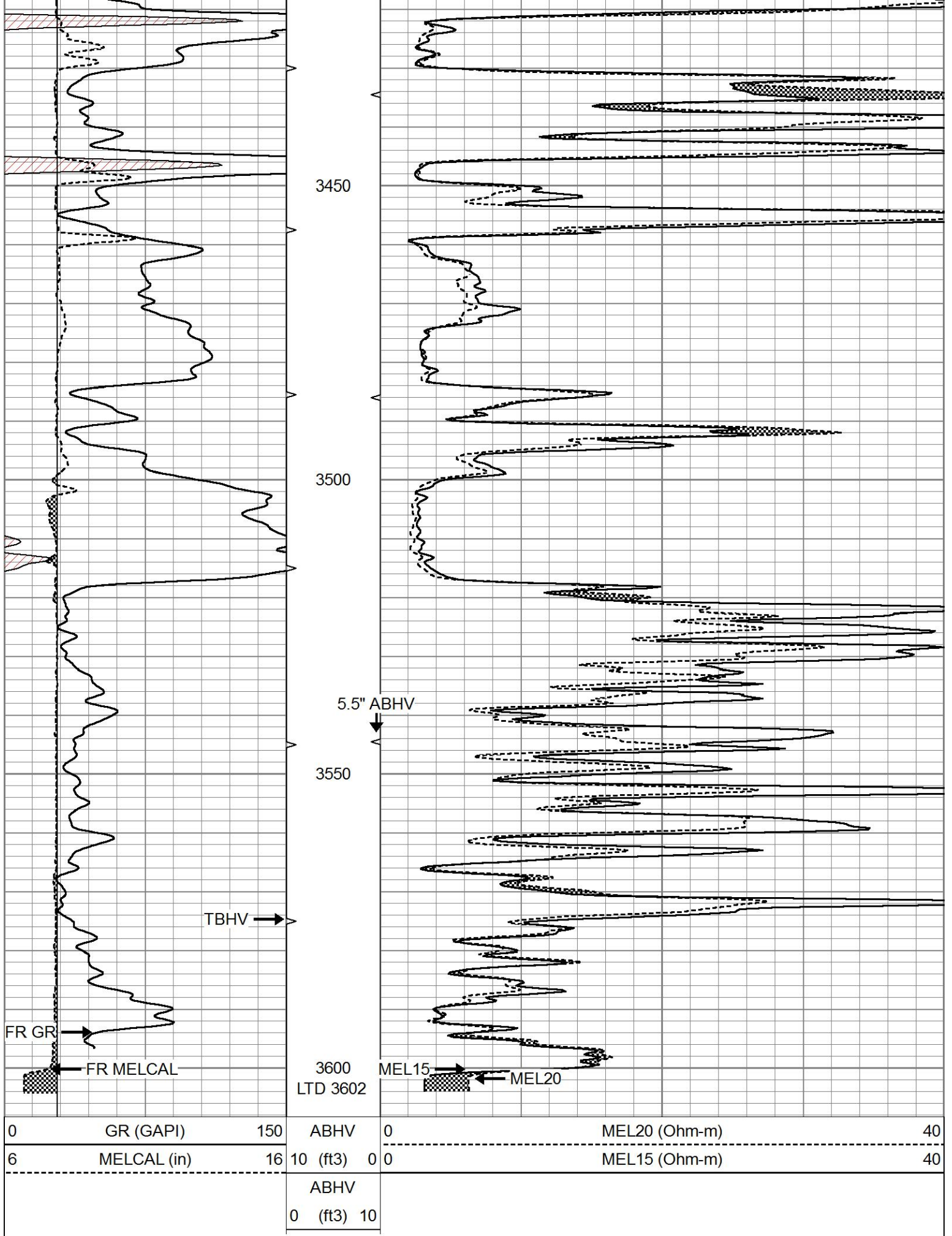
3250

3300

3350

3400



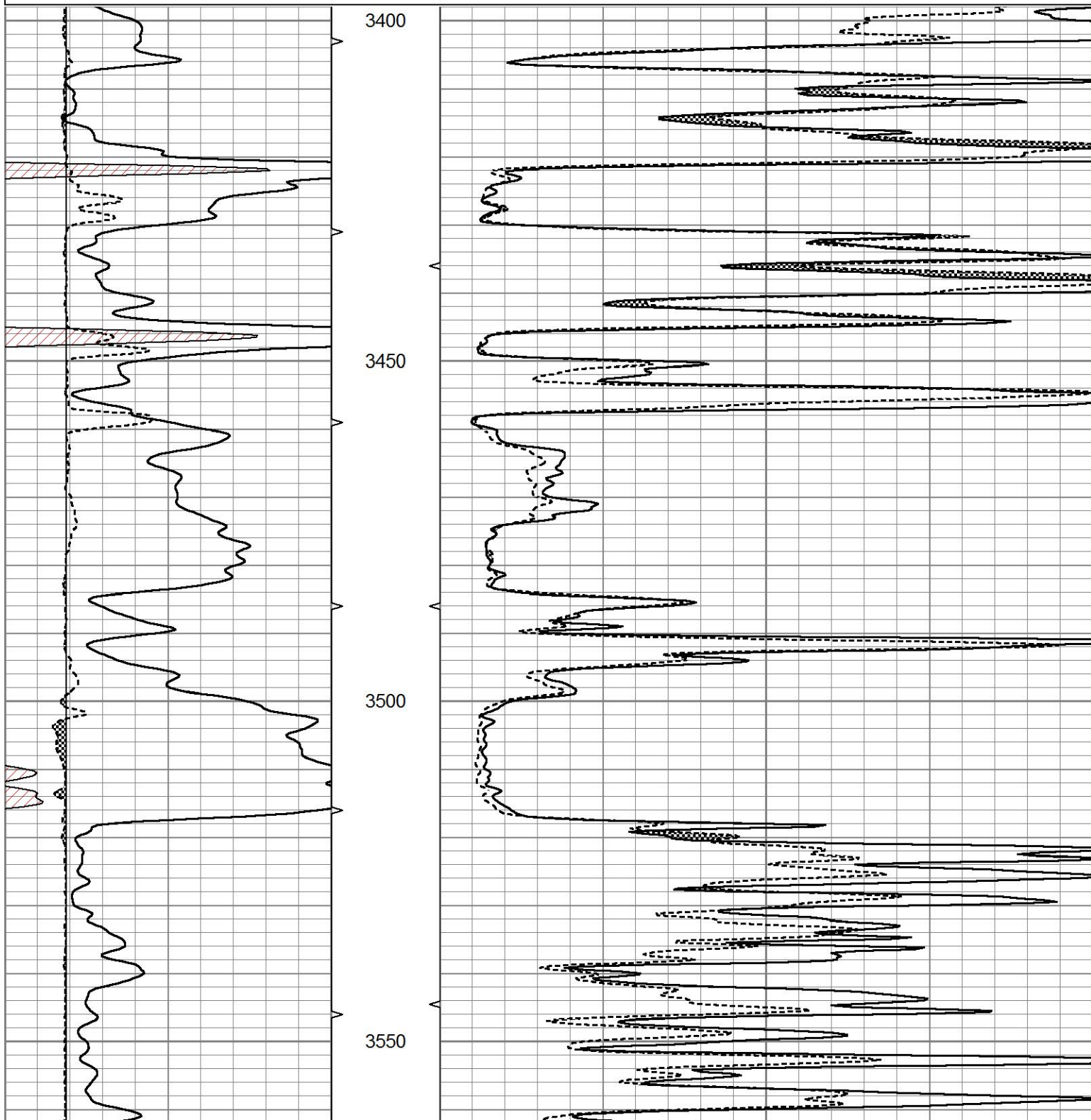


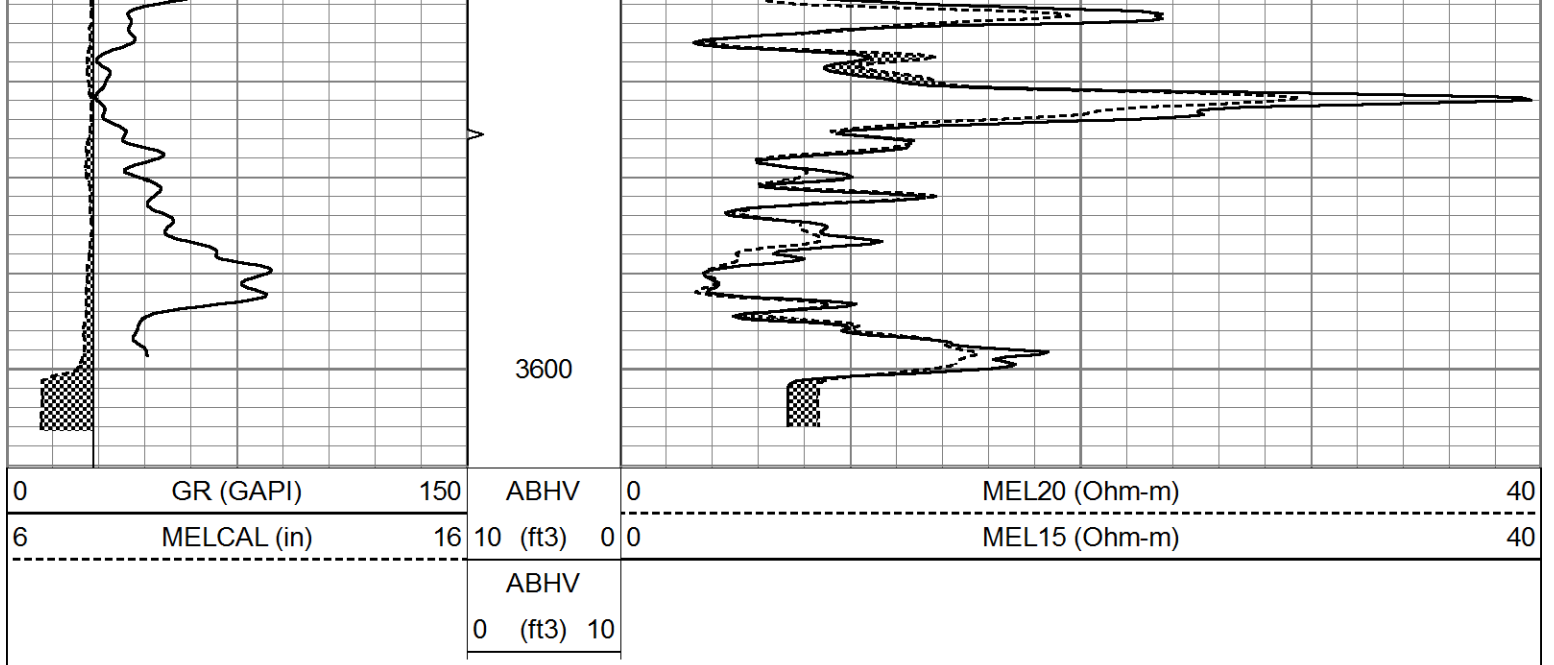


REPEAT SECTION

Database File 7325pe.db
Dataset Pathname pass5.1
Presentation Format micro
Dataset Creation Wed Aug 23 15:08:12 2023
Charted by Depth in Feet scaled 1:240

0	GR (GAPI)	150	ABHV	0	MEL20 (Ohm-m)	40
6	MELCAL (in)	16	10 (ft3)	0 0	MEL15 (Ohm-m)	40
			ABHV			
			0 (ft3)	10		





Calibration Report

Database File 7325pe.db
 Dataset Pathname pass6.2
 Dataset Creation Wed Aug 23 15:05:24 2023

MICRO Calibration Report

Serial Number: 070911
 Tool Model: ProbeN
 Performed: Wed Aug 23 14:38:35 2023

Caliper Calibration: Gain=4.706 Offset=2.353
 References Low Cal High Cal
 8.000 16.000
 Readings 1.200 2.900

1.5" Calibration: Gain=32.000 Offset=0.000
 References Low Cal High Cal
 0.000 20.000
 Readings 0.001 1.291

2" Calibration: Gain=42.000 Offset=0.000
 References Low Cal High Cal
 0.000 20.000
 Readings 0.003 1.103

Gamma Ray Calibration Report

Serial Number: 070559
 Tool Model: OPEN_GR
 Performed: Sun May 14 16:49:25 2023

Calibrator Value: 1.0 GAPI
 Background Reading: 0.0 cps
 Calibrator Reading: 1.0 cps
 Sensitivity: 0.3000 GAPI/cps