



**COMPENSATED
DENSITY / NEUTRON
PE LOG**

Company TRANS - PACIFIC OIL CORP.
Well THOMPSON "A" #1-32
Field CARMICHAEL
County ROOKS
State KANSAS

Company TRANS - PACIFIC OIL CORPORATION
Well THOMPSON "A" #1-32
Field CARMICHAEL
County ROOKS State KANSAS

Location: API #: 15-163-24481-0000
2268' FSL & 1309' FEL
SW - NW - NE - SE
Permanent Datum GROUND LEVEL Elevation 2044
Log Measured From KELLY BUSHING 7' A.G.L.
Drilling Measured From KELLY BUSHING
Elevation
K.B. 2051
D.F. 2049
G.L. 2044

Date	8/23/23
Run Number	ONE
Depth Driller	3600
Depth Logger	3602
Bottom Logged Interval	3578
Top Log Interval	2800
Casing Driller	8 5/8"@222
Casing Logger	222
Bit Size	7 7/8"
Type Fluid in Hole	CHEMICAL MUD
Density / Viscosity	9.3/55
pH / Fluid Loss	10.0/7.8
Source of Sample	FLOWLINE
Rm @ Meas. Temp	.950@89F
Rmf @ Meas. Temp	.713@89F
Rmc @ Meas. Temp	1.14@89F
Source of Rmf / Rmc	MEASUREMENT
Rm @ BHT	.756@112F
Time Circulation Stopped	2 HOURS
Time Logger on Bottom	12:30 P.M.
Maximum Recorded Temperature	112F
Equipment Number	922339
Location	HAYS, KANSAS
Recorded By	JEFF LUEBBERS
Witnessed By	NICK HIXON

<<< Fold Here >>>

All interpretations are opinions based on inferences from electrical or other measurements and we cannot and do not guarantee the accuracy or correctness of any interpretation, and we shall not, except in the case of gross or willful negligence on our part, be liable or responsible for any loss, costs, damages, or expenses incurred or sustained by anyone resulting from any interpretation made by any of our officers, agents or employees. These interpretations are also subject to our general terms and conditions set out in our current Price Schedule.

15-163-24481-0000 Comments

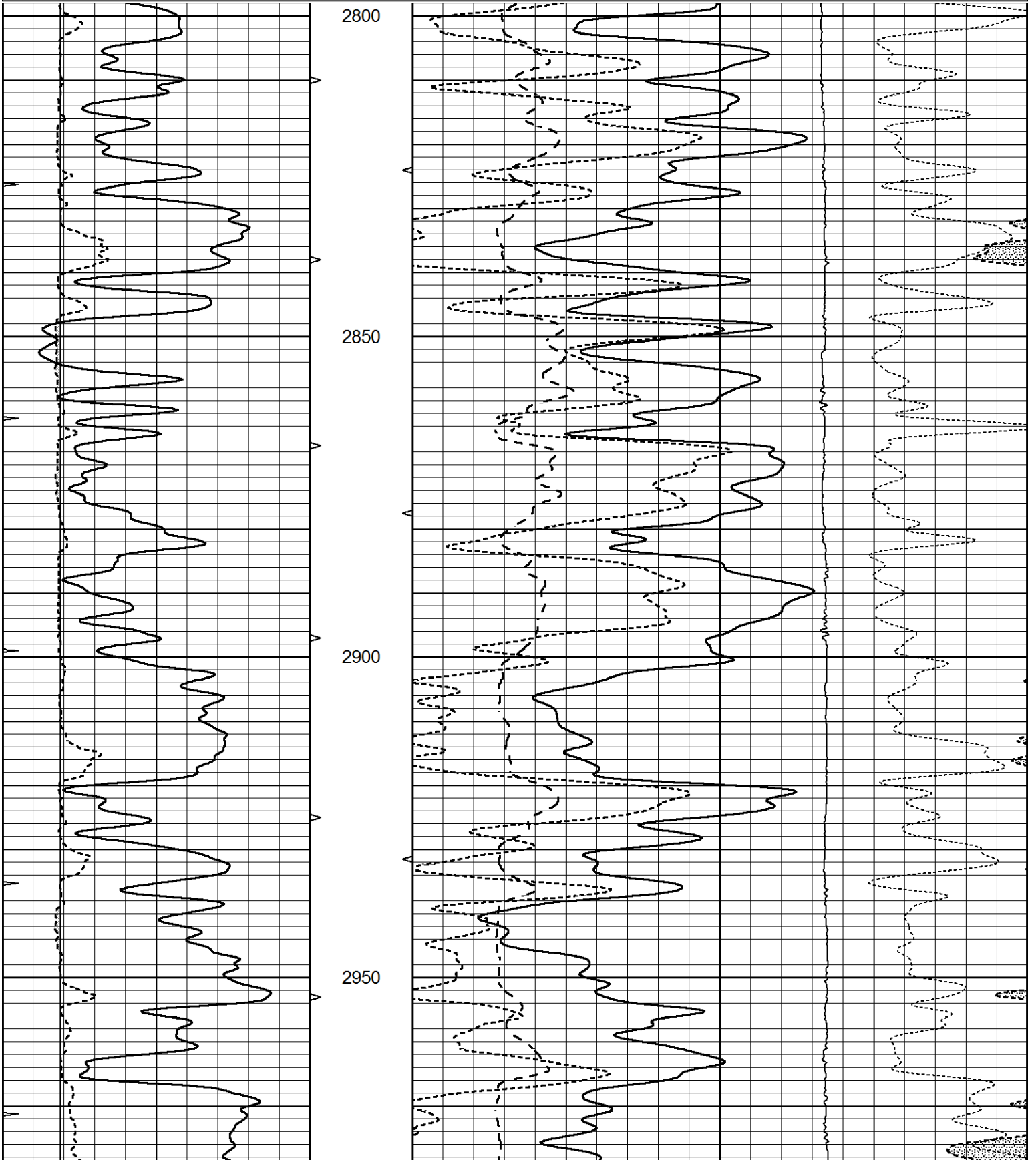
THANK YOU FOR USING ELI WIRELINE HAYS, KANSAS (785) 628-6395
DIRECTIONS
PLAINVILLE, KS., 5N. OM HWY 183 TO "RD. S"(COUNTRY CLUB) 3W., 1/2N., W. INTO

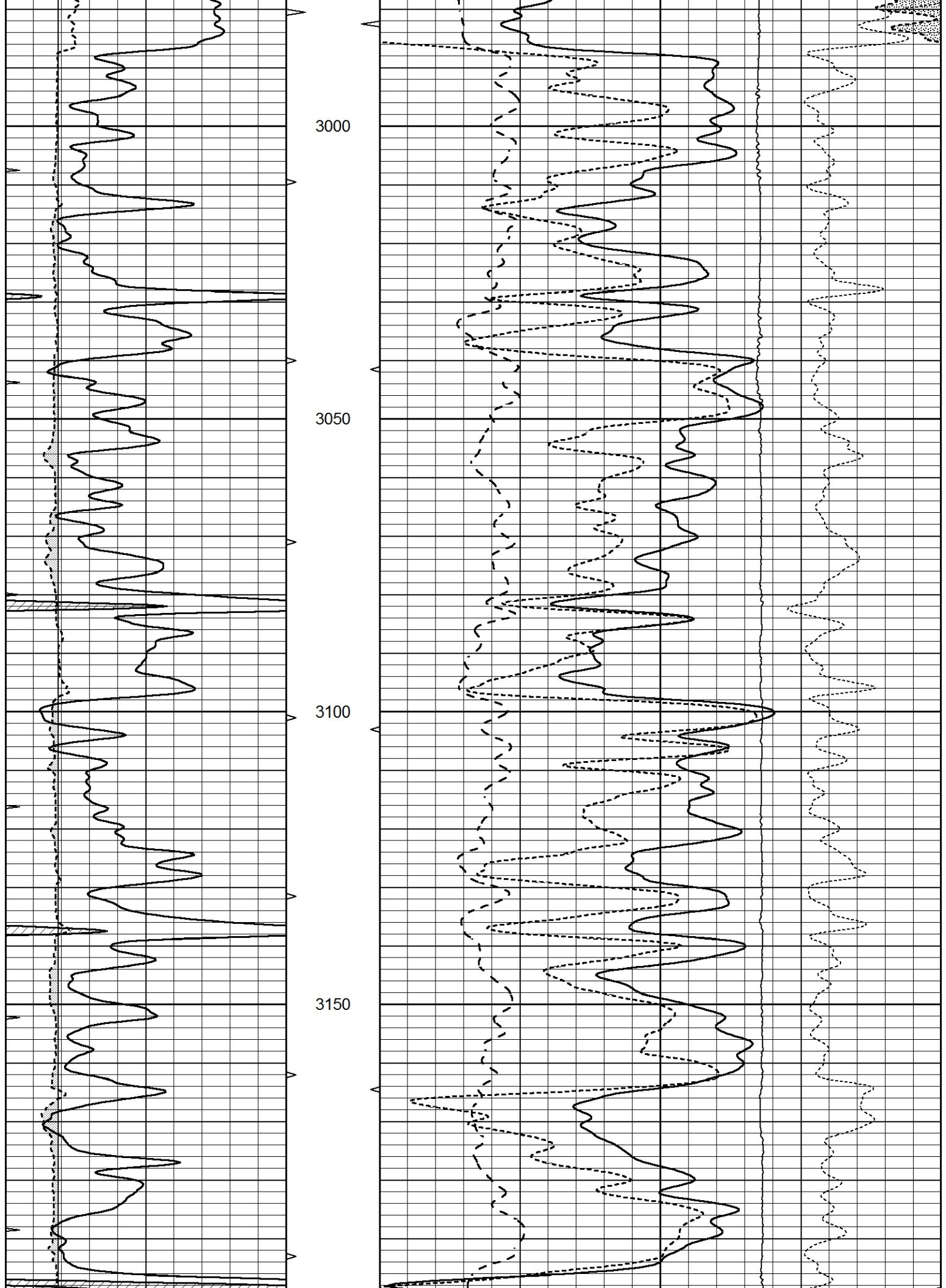


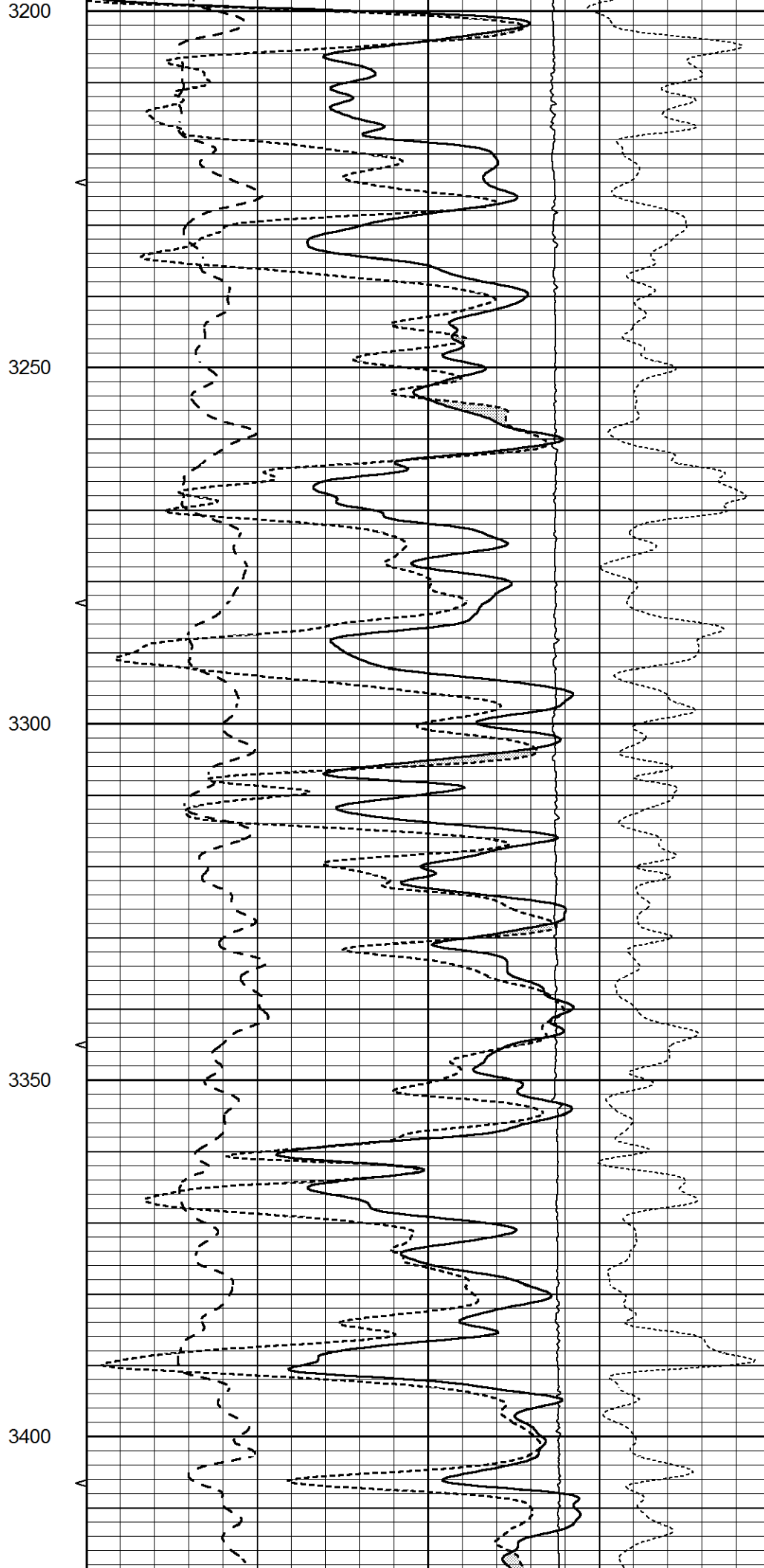
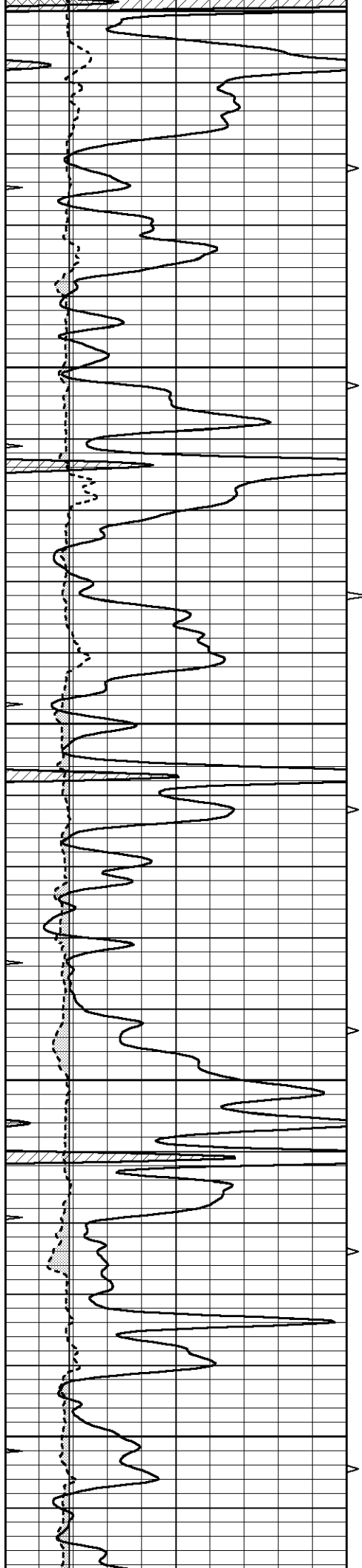
MAIN SECTION

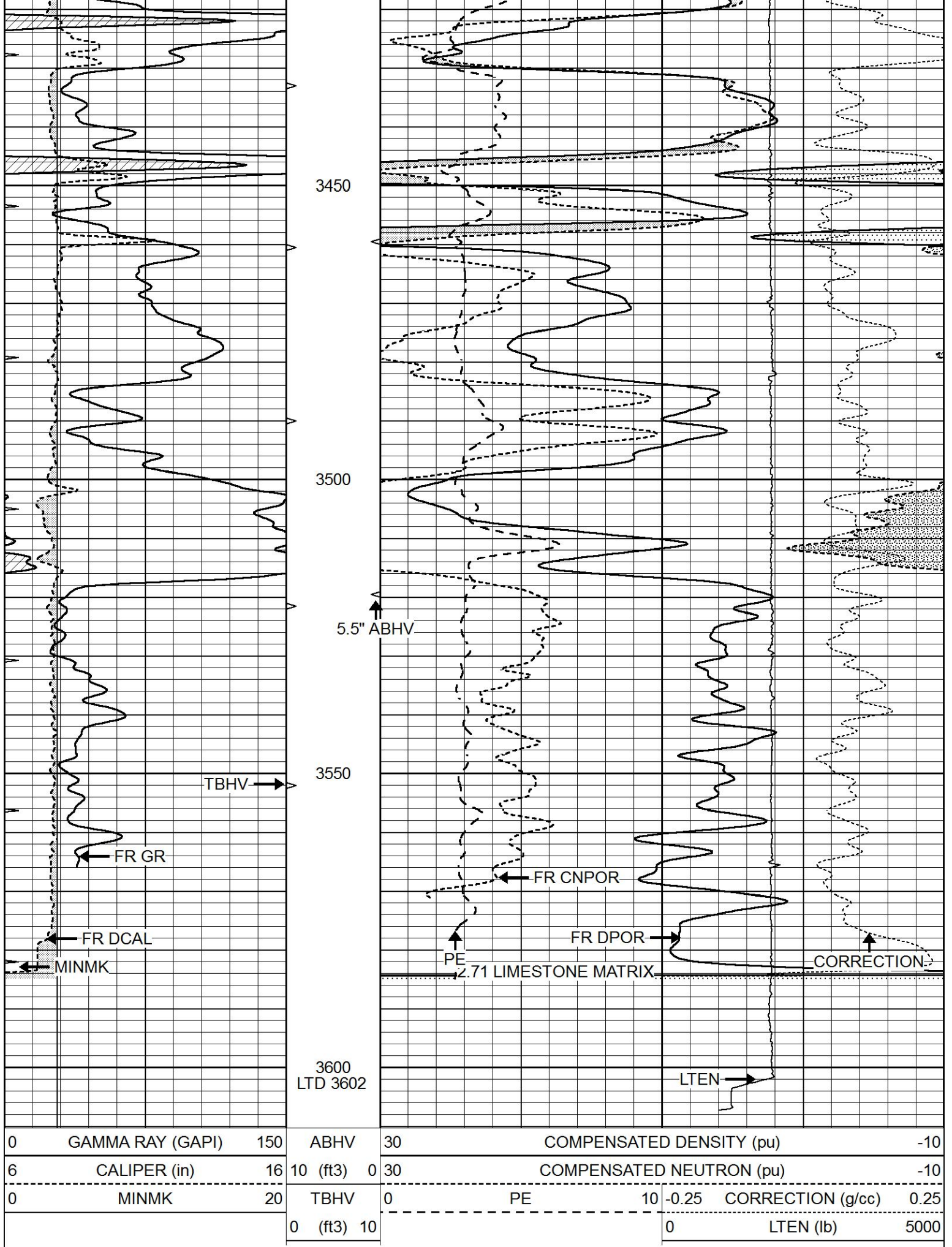
Database File 7325pe.db
 Dataset Pathname pass3.1M
 Presentation Format _ldt_neu
 Dataset Creation Wed Aug 23 14:19:21 2023
 Charted by Depth in Feet scaled 1:240

0	GAMMA RAY (GAPI)	150	ABHV	30	COMPENSATED DENSITY (pu)			-10	
6	CALIPER (in)	16	10 (ft3)	0	COMPENSATED NEUTRON (pu)			-10	
0	MINMK	20	TBHV	0	PE	10	-0.25	CORRECTION (g/cc)	0.25
			0 (ft3)	10			0	LTEN (lb)	5000







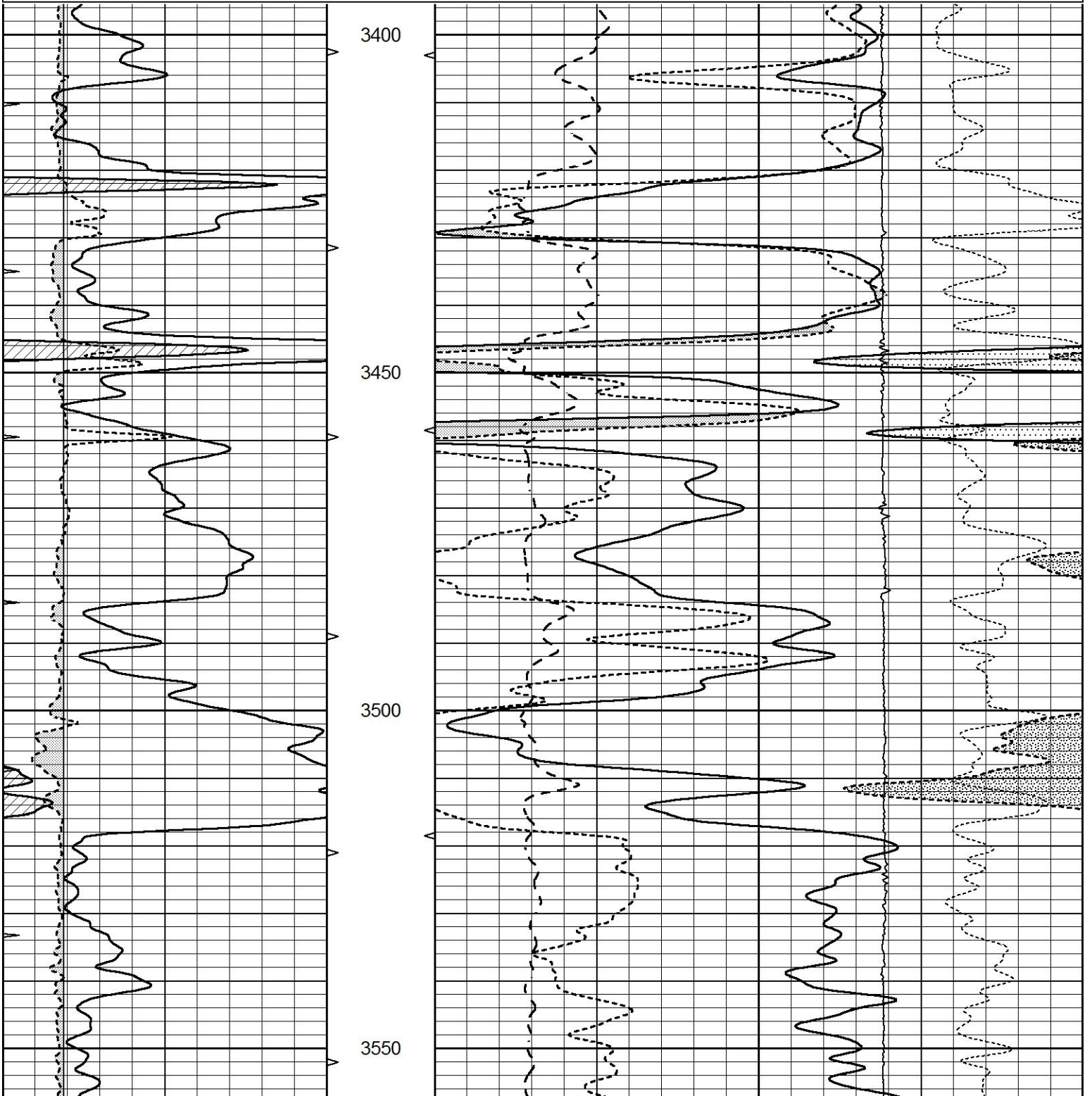


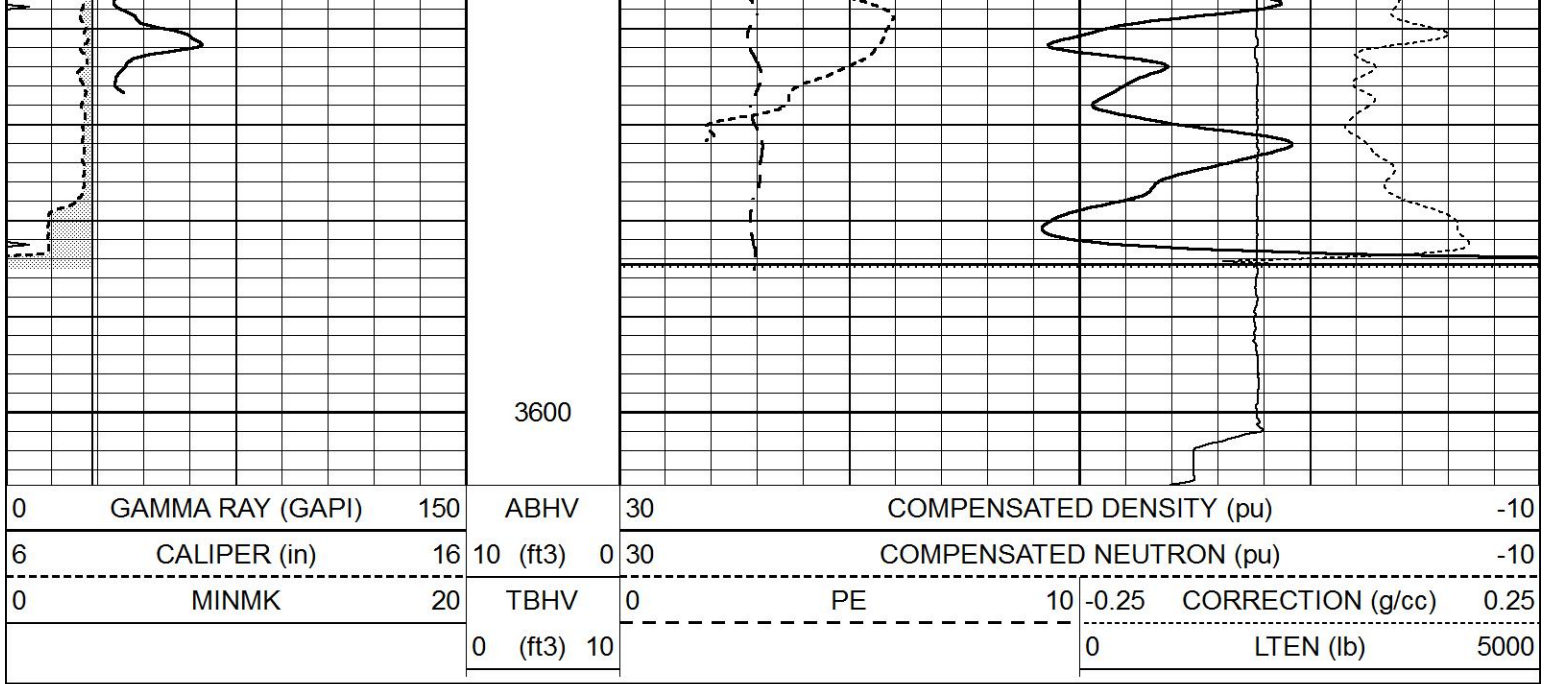


REPEAT SECTION

Database File 7325pe.db
 Dataset Pathname pass2.1R
 Presentation Format _ldt_neu
 Dataset Creation Wed Aug 23 13:14:22 2023
 Charted by Depth in Feet scaled 1:240

0	GAMMA RAY (GAPI)	150	ABHV	30	COMPENSATED DENSITY (pu)		-10
6	CALIPER (in)	16	10 (ft3)	0	COMPENSATED NEUTRON (pu)		-10
0	MINMK	20	TBHV	0	PE	10	-0.25 CORRECTION (g/cc) 0.25
			0 (ft3)	10			0 LTEN (lb) 5000

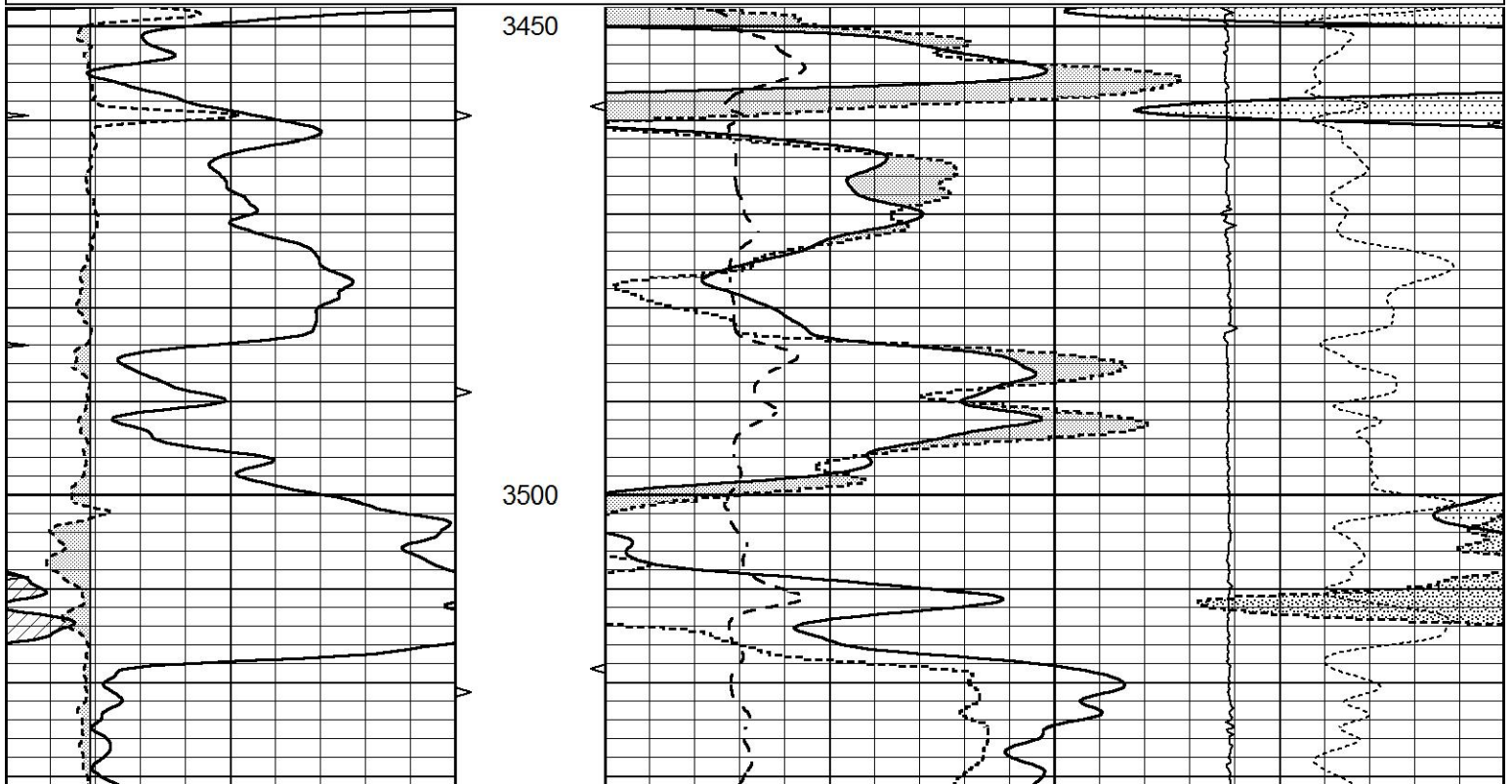


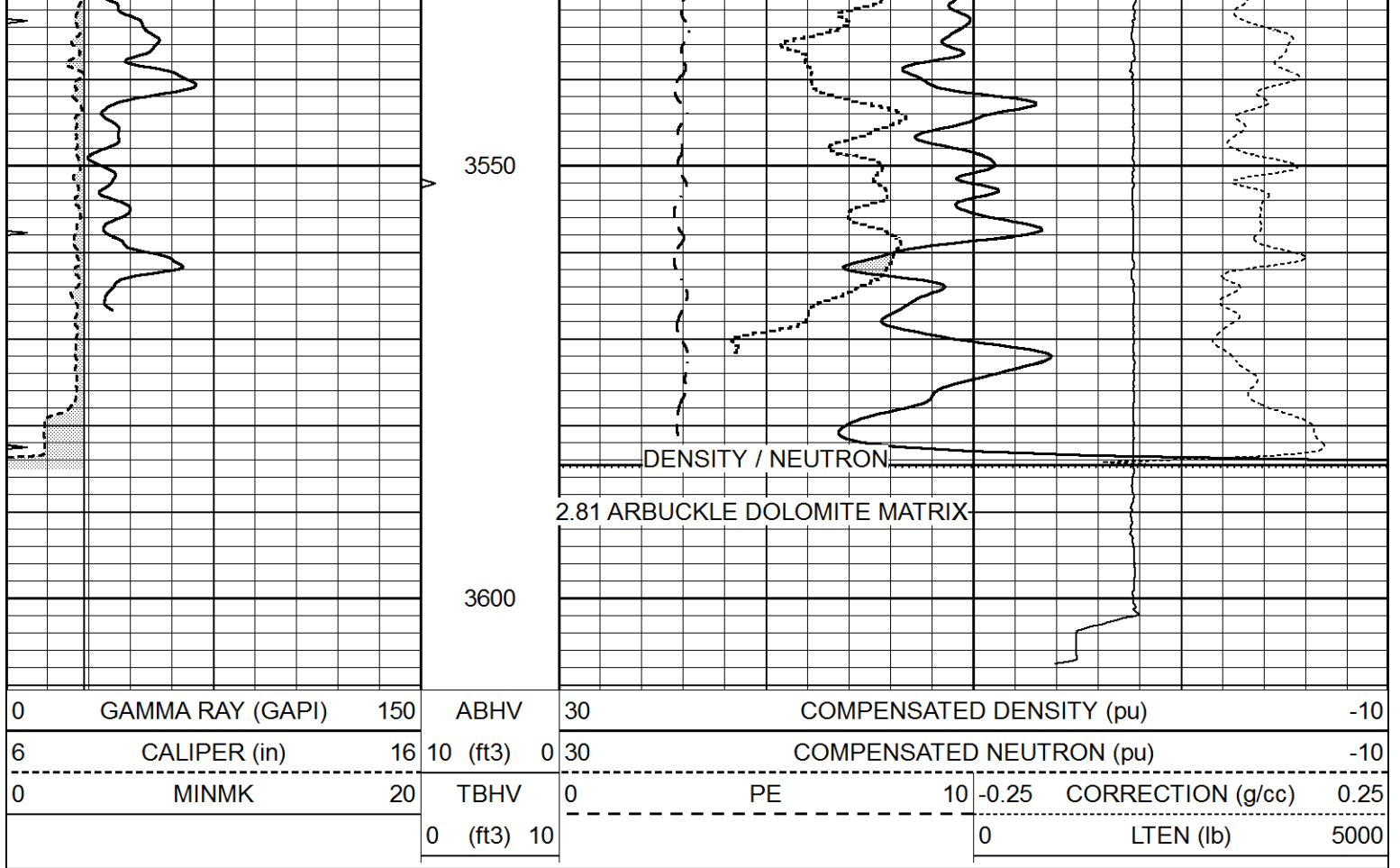


DOLOMITE MATRIX

Database File 7325pe.db
 Dataset Pathname pass2.1D
 Presentation Format _ldt_neu
 Dataset Creation Wed Aug 23 13:17:26 2023
 Charted by Depth in Feet scaled 1:240

0	GAMMA RAY (GAPI)	150	ABHV	30	COMPENSATED DENSITY (pu)	-10
6	CALIPER (in)	16	10 (ft3)	0 30	COMPENSATED NEUTRON (pu)	-10
0	MINMK	20	TBHV	0	PE	10 -0.25
			0 (ft3)	10		CORRECTION (g/cc)
					0	LTEN (lb)
						5000





Calibration Report

Database File 7325pe.db
 Dataset Pathname pass3.1M
 Dataset Creation Wed Aug 23 14:19:21 2023

Dual Induction Calibration Report

Serial-Model: PROBE8-DILG
 Surface Cal Performed: Mon Aug 14 00:43:09 2023
 Downhole Cal Performed: Mon Aug 14 00:39:25 2023
 After Survey Verification Performed: Mon Jul 28 11:08:27 2008

Surface Calibration

Loop:	Readings				References			Results	
	Air	Loop			Air	Loop		m	b
Deep	0.015	0.648	V	0.000	400.000	mmho/m	660.000	8.000	
Medium	0.029	0.796	V	0.000	464.000	mmho/m	620.000	0.000	
Internal:	Zero	Cal		Zero	Cal		m	b	
Deep	0.017	0.657	V	0.000	400.000	mmho/m	625.153	-10.619	
Medium	0.016	0.757	V	0.000	464.000	mmho/m	625.992	-9.739	

Downhole Calibration

	Readings				References			Results	
	Zero	Cal			Zero	Cal		m'	b'
Deep	0.000	0.000	mmho/m	2.011	405.777	mmho/m	1.000	0.000	
Medium	0.000	0.000	mmho/m	7.590	503.393	mmho/m	1.000	0.000	
LL3		7.500	V		1500.000	Ohm-m			
		0.000	V		20.000	Ohm-m			
		-7.200	V		3800.000	mmho-m			

After Survey Verification		Readings		Targets			Results	
	Zero	Cal		Zero	Cal		m'	b'
Deep	0.000	0.000	mmho/m	0.000	0.000	mmho/m	0.000	0.000
Medium	0.000	0.000	mmho/m	0.000	0.000	mmho/m	0.000	0.000
LL3		1.000	Ohm-m		1.000	Ohm-m		
		0.000	Ohm-m		0.000	Ohm-m		
		1.000	mmho-m		1.000	mmho-m		

Litho Density Calibration Report
Serial: 004 Model: PRB

Master Calibration		Performed Tue Aug 02 11:29:35 2022					
	Background	Magnesium	Aluminum	Aluminum+Fe			
Window 1	1154.2	10019.5	3137.9	2795.6		cps	
Window 2	1054.4	8597.6	2733.4	2469.5		cps	
Window 3	902.3	5241.4	1832.1	1719.3		cps	
Window 4	251.9	261.1	255.8	252.9		cps	
Long Space	0.0	7543.2	1679.0	1415.0		cps	
Short Space	4.4	2049.3	1321.7	1116.8		cps	
Rho		1.7100	2.5900	0.0000		g/cc	
Pe		2.0000	2.7500	5.7900			
Rib Angle	: 43.7	Rib Slope	: 0.957	Density/Spine Ratio		: 0.562	
Spine Angle	: 73.7	Spine Slope	: 3.426	Spine Intercept		: -17.2	

Before Survey Verification		Performed Wed Dec 31 18:00:00 1969					
Window 1	0.0	0.0	0.0	0.0		cps	
Window 2	0.0	0.0	0.0	0.0		cps	
Window 3	0.0	0.0	0.0	0.0		cps	
Window 4	0.0	0.0	0.0	0.0		cps	
Long Space	0.0	0.0	0.0	0.0		cps	
Short Space	0.0	0.0	0.0	0.0		cps	
Measured Rho		0.0000	0.0000	0.0000		g/cc	
Measured Correction		0.0000	0.0000	0.0000		g/cc	
Measured Pe			0.0000	0.0000			

After Survey Verification		Performed Wed Dec 31 18:00:00 1969					
Window 1	0.0	0.0	0.0	0.0		cps	
Window 2	0.0	0.0	0.0	0.0		cps	
Window 3	0.0	0.0	0.0	0.0		cps	
Window 4	0.0	0.0	0.0	0.0		cps	
Long Space	0.0	0.0	0.0	0.0		cps	
Short Space	0.0	0.0	0.0	0.0		cps	
Measured Rho		0.0000	0.0000	0.0000		g/cc	
Measured Correction		0.0000	0.0000	0.0000		g/cc	
Measured Pe			0.0000	0.0000			

Compensated Neutron Calibration Report

Serial Number: 070808PMC
Tool Model: NABORS

PRE-SURVEY VERIFICATION

Detector	Readings	Measured	Target
Short Space	cps		
Long Space	cps	pu	pu

POST-SURVEY VERIFICATION

Detector	Readings	Measured	Target
Short Space	cps		
Long Space	cps	pu	pu

Gamma Ray Calibration Report

Serial Number:	070558		
Tool Model:	OPEN_GR		
Performed:	Wed Aug 23 13:21:36 2023		
Calibrator Value:	1.0	GAPI	
Background Reading:	0.0	cps	
Calibrator Reading:	1.0	cps	
Sensitivity:	0.3000	GAPI/cps	