



**COMPENSATED  
DENSITY/NEUTRON  
PE LOG**

Company UNION VALLEY PETROLEUM CORP.  
Well RUTH ANN #1-6  
Field UNNAMED  
County SUMNER  
State KANSAS

Company UNION VALLEY PETROLEUM CORP.  
Well RUTH ANN #1-6  
Field UNNAMED  
County SUMNER State KANSAS

Location: API #: 15-191-22867-0000  
1490 FNL & 1375 FEL  
NE - NE - SW - NE  
SEC 6 TWP 35S RGE 4W  
Permanent Datum GROUND LEVEL Elevation 1229  
Log Measured From KELLY BUSHING 13' A.G.L.  
Drilling Measured From KELLY BUSHING  
Other Services  
DILMEL  
SONIC  
Elevation  
K.B. 1242  
D.F. 1240  
G.L. 1229

Date	8/2/25	
Run Number	ONE	
Depth Driller	4730	
Depth Logger	4729	
Bottom Logged Interval	4705	
Top Log Interval	3000	
Casing Driller	8.625 @ 395	
Casing Logger	395	
Bit Size	7.875	
Type Fluid in Hole	CHEMICAL MUD	CHLORIDES 7.000 PPM
Density / Viscosity	9.4/40	
pH / Fluid Loss	10.5/8.4	
Source of Sample	FLOWLINE	
Rm @ Meas. Temp	.650 @ 101F	
Rmf @ Meas. Temp	.488 @ 101F	
Rmc @ Meas. Temp	.780 @ 101F	
Source of Rmf / Rmc	MEASUREMENT	
Rm @ BHT	.534 @ 123F	
Time Circulation Stopped	2 HOURS	
Time Logger on Bottom	3:30 PM	
Maximum Recorded Temperature	123F	
Equipment Number	3802	
Location	HAYS, KANSAS	
Recorded By	COLE ROBBEN	TJ DREILING
Witnessed By	CHUCK ZORIO	

<<< Fold Here >>>

All interpretations are opinions based on inferences from electrical or other measurements and we cannot and do not guarantee the accuracy or correctness of any interpretation, and we shall not, except in the case of gross or willful negligence on our part, be liable or responsible for any loss, costs, damages, or expenses incurred or sustained by anyone resulting from any interpretation made by any of our officers, agents or employees. These interpretations are also subject to our general terms and conditions set out in our current Price Schedule.

Comments

THANK YOU FOR USING ELI WIRELINE SERVICES, HAYS, KS. ( 785 ) 628-6395

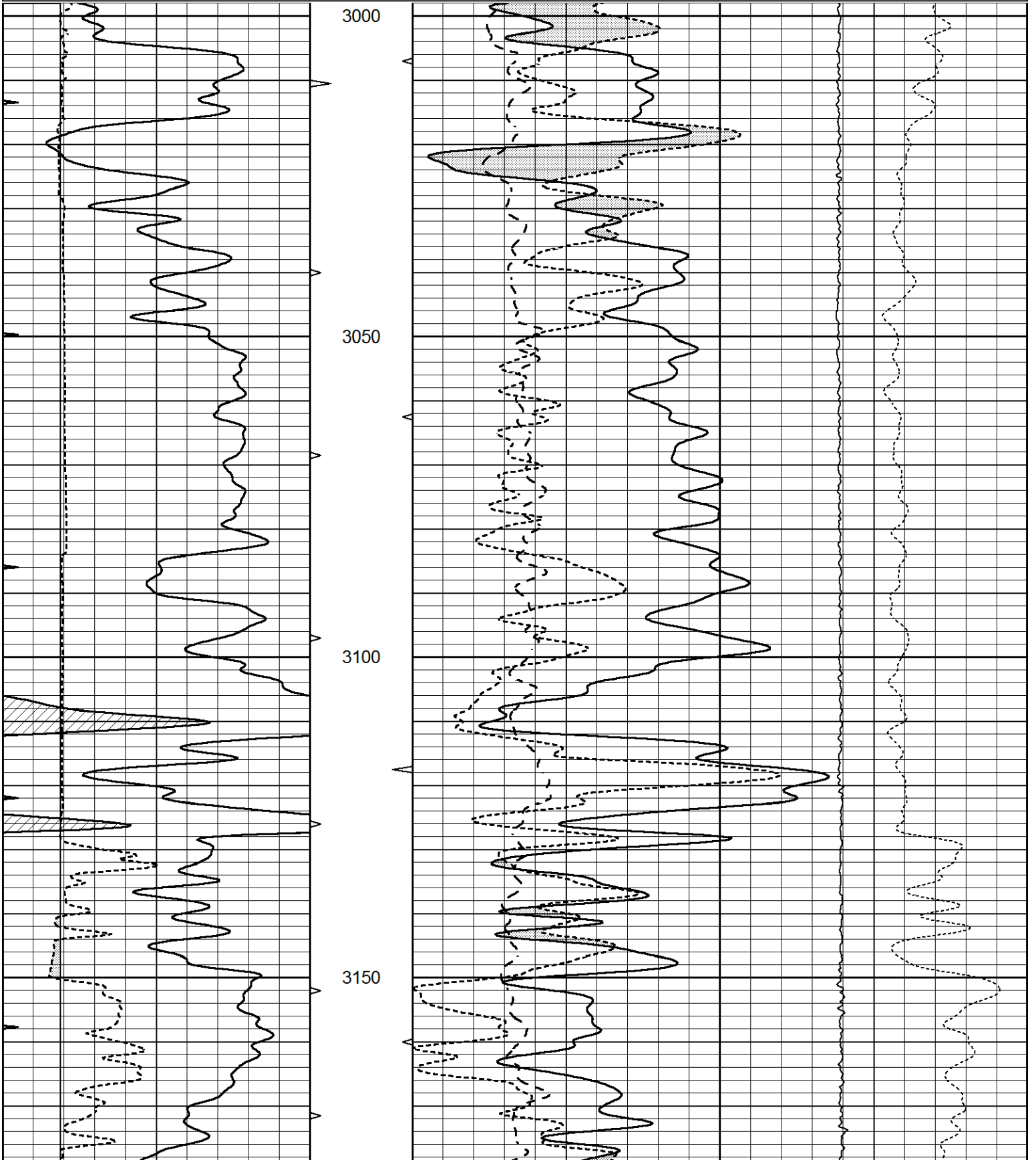
DIRECTIONS:  
FROM BLUFF CITY, KANSAS - 1.5 MILES SOUTH TO SE 70 ROAD, 5 MILES EAST TO  
S. FALLS ROAD, 1 MILE SOUTH, SOUTH INTO THROUGH GATE

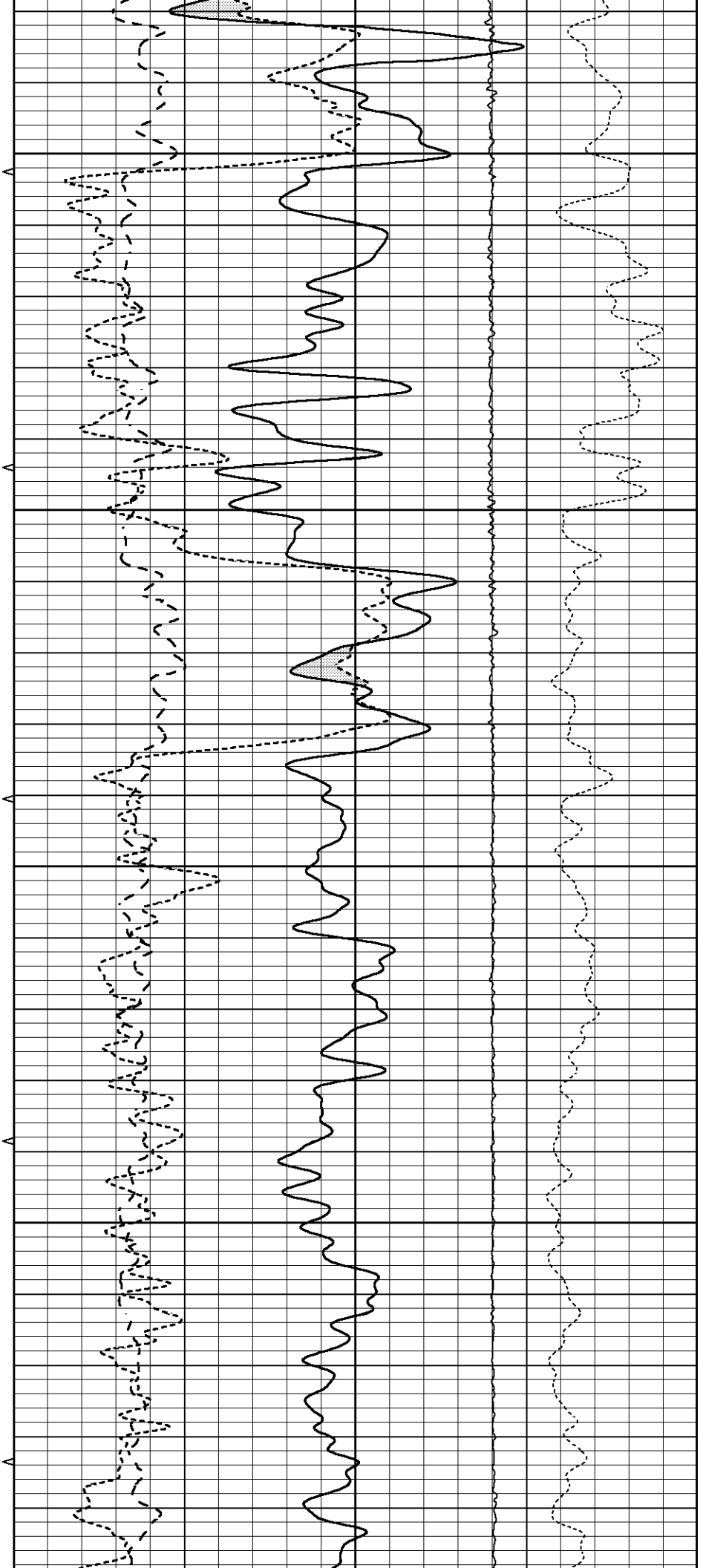
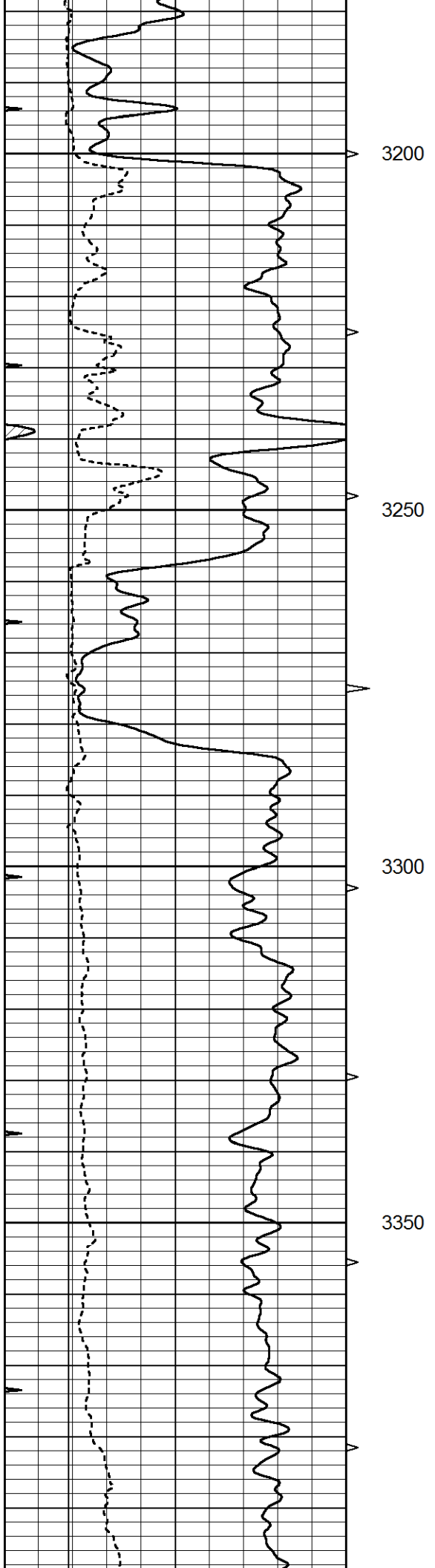


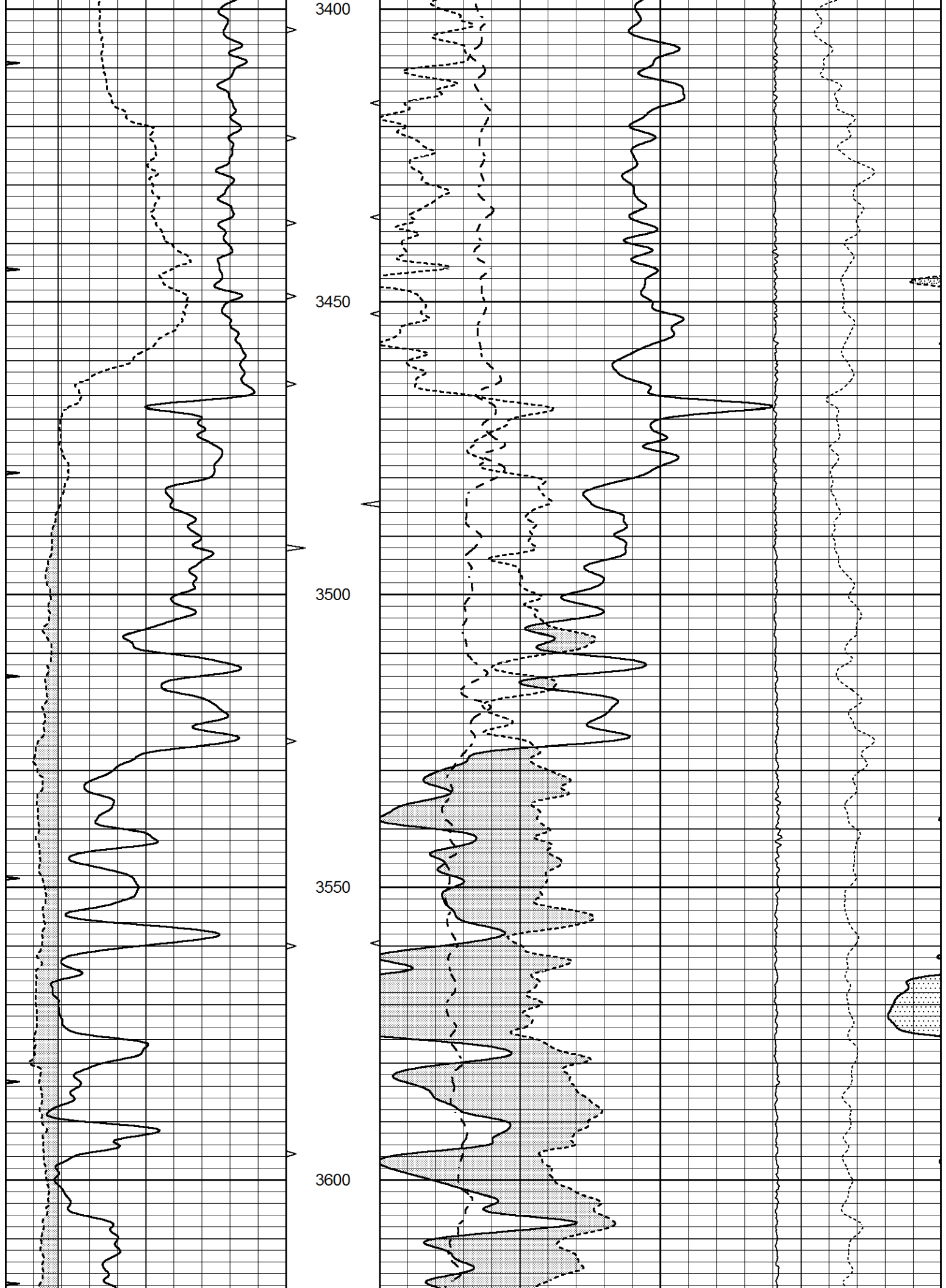
# MAIN SECTION

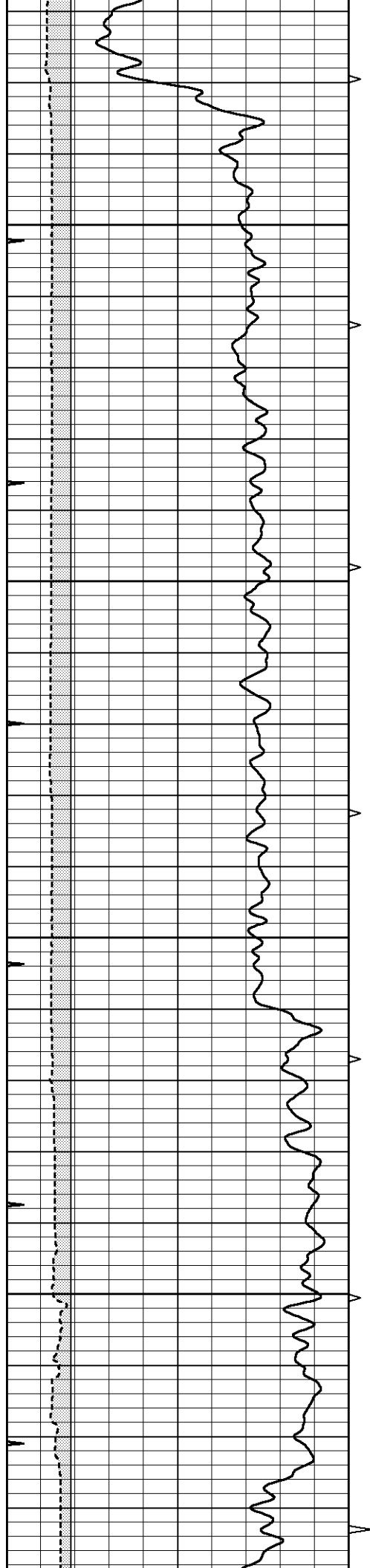
Database File 9586pe.db  
 Dataset Pathname pass2.D  
 Presentation Format \_ldt\_neu  
 Dataset Creation Sat Aug 02 16:46:58 2025  
 Charted by Depth in Feet scaled 1:240

0	GAMMA RAY (GAPI)	150	ABHV	30	COMPENSATED DENSITY (pu)		-10
6	CALIPER (in)	16	10 (ft3)	0	COMPENSATED NEUTRON (pu)		-10
0	MINMK	20	TBHV	0	PE	10	-0.25 CORRECTION (g/cc) 0.25
			0 (ft3)	10		0	LTEN (lb) 5000







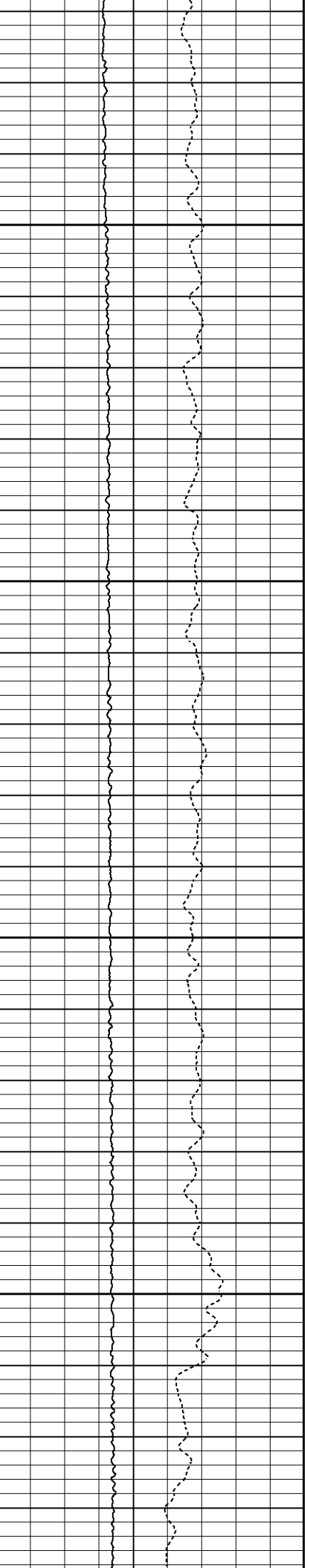
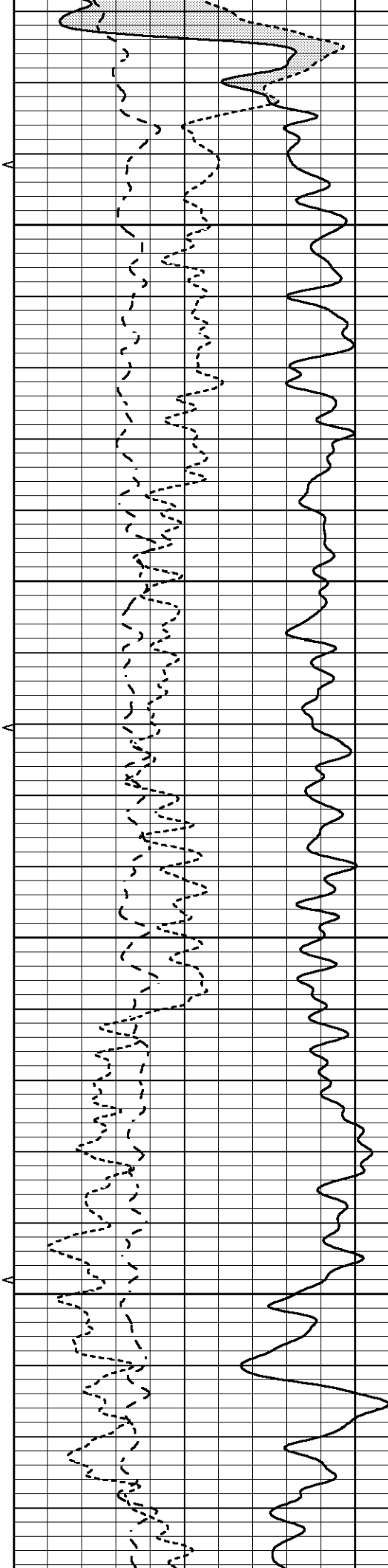


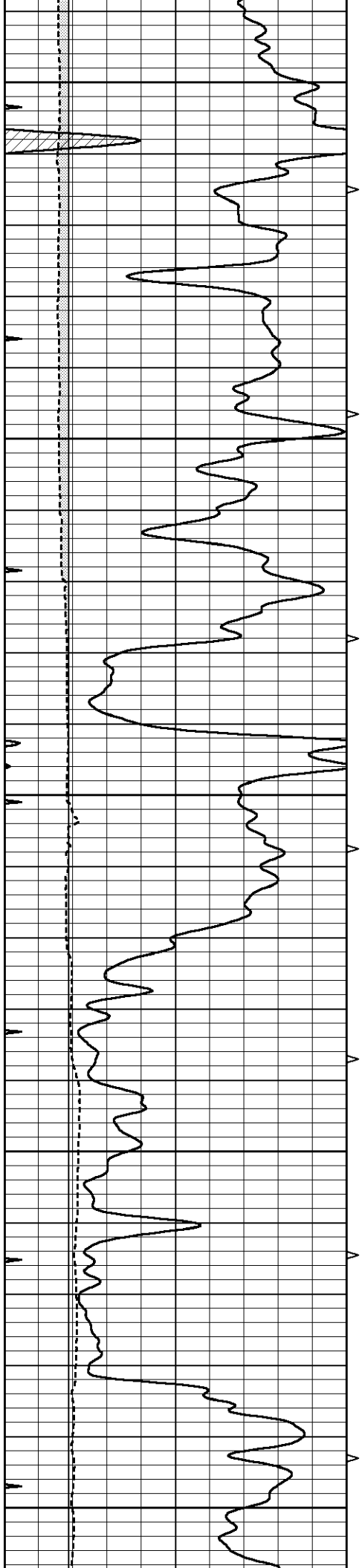
3650

3700

3750

3800





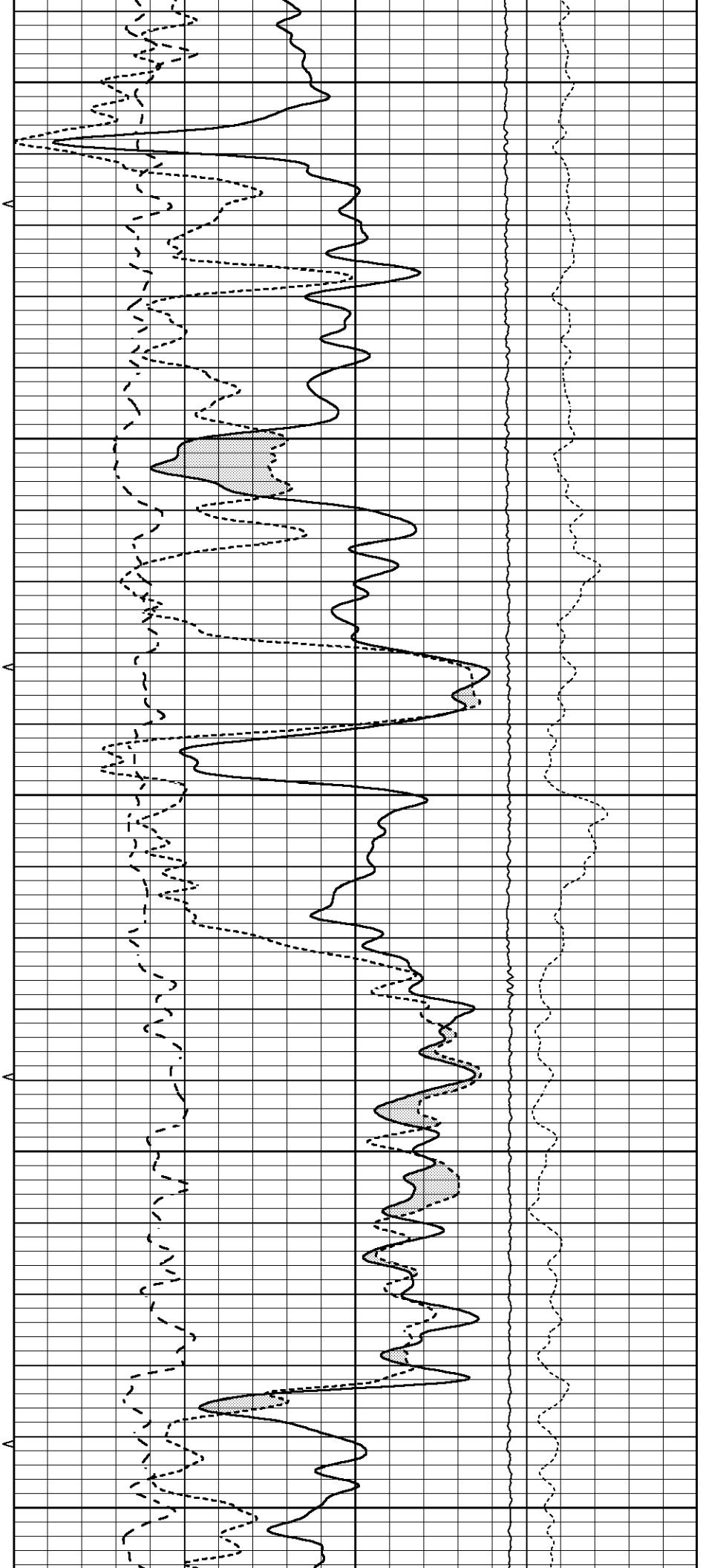
3850

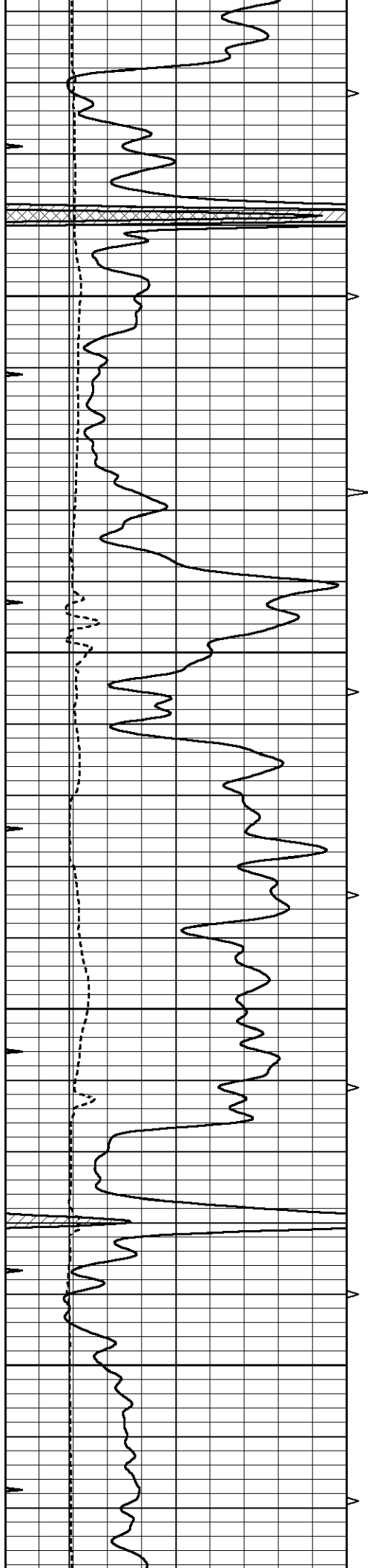
3900

3950

4000

4050



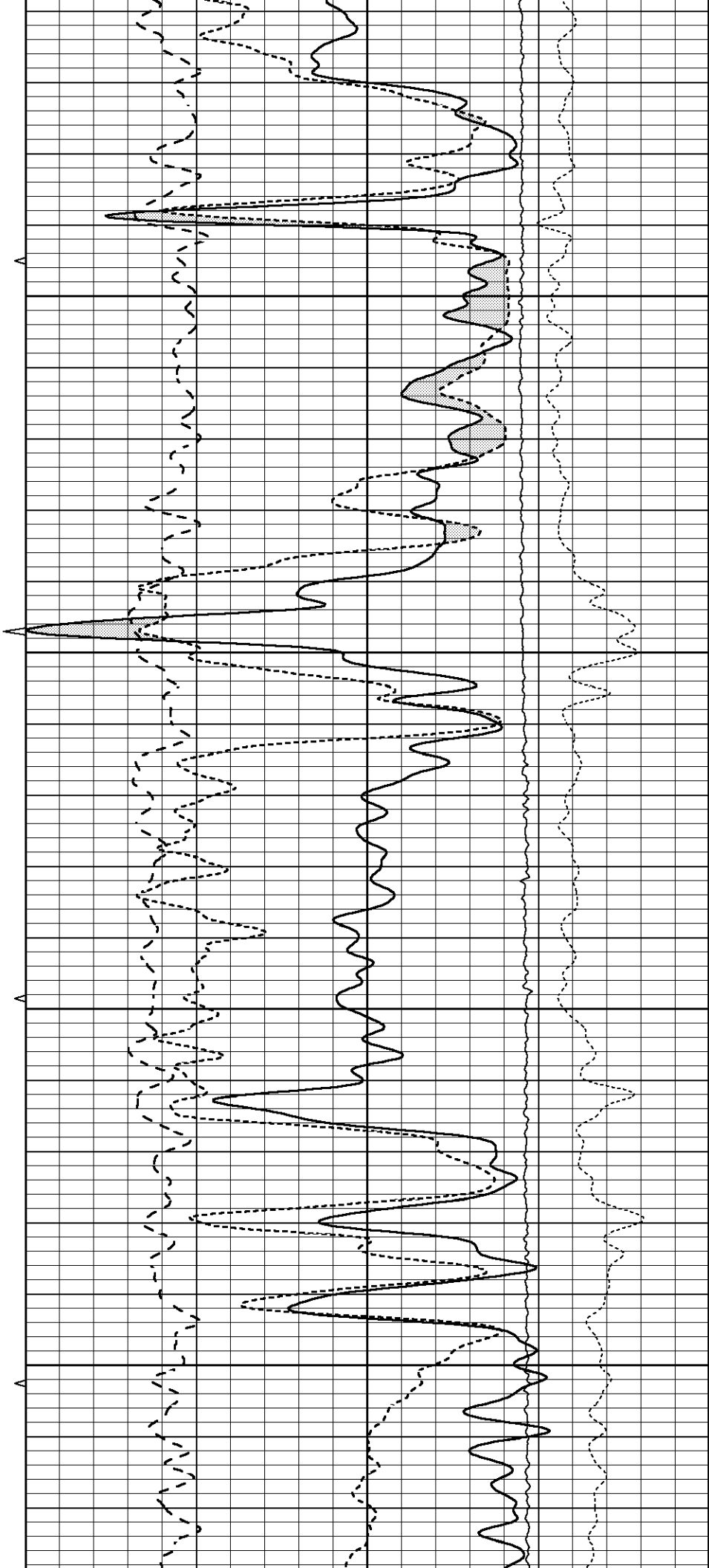


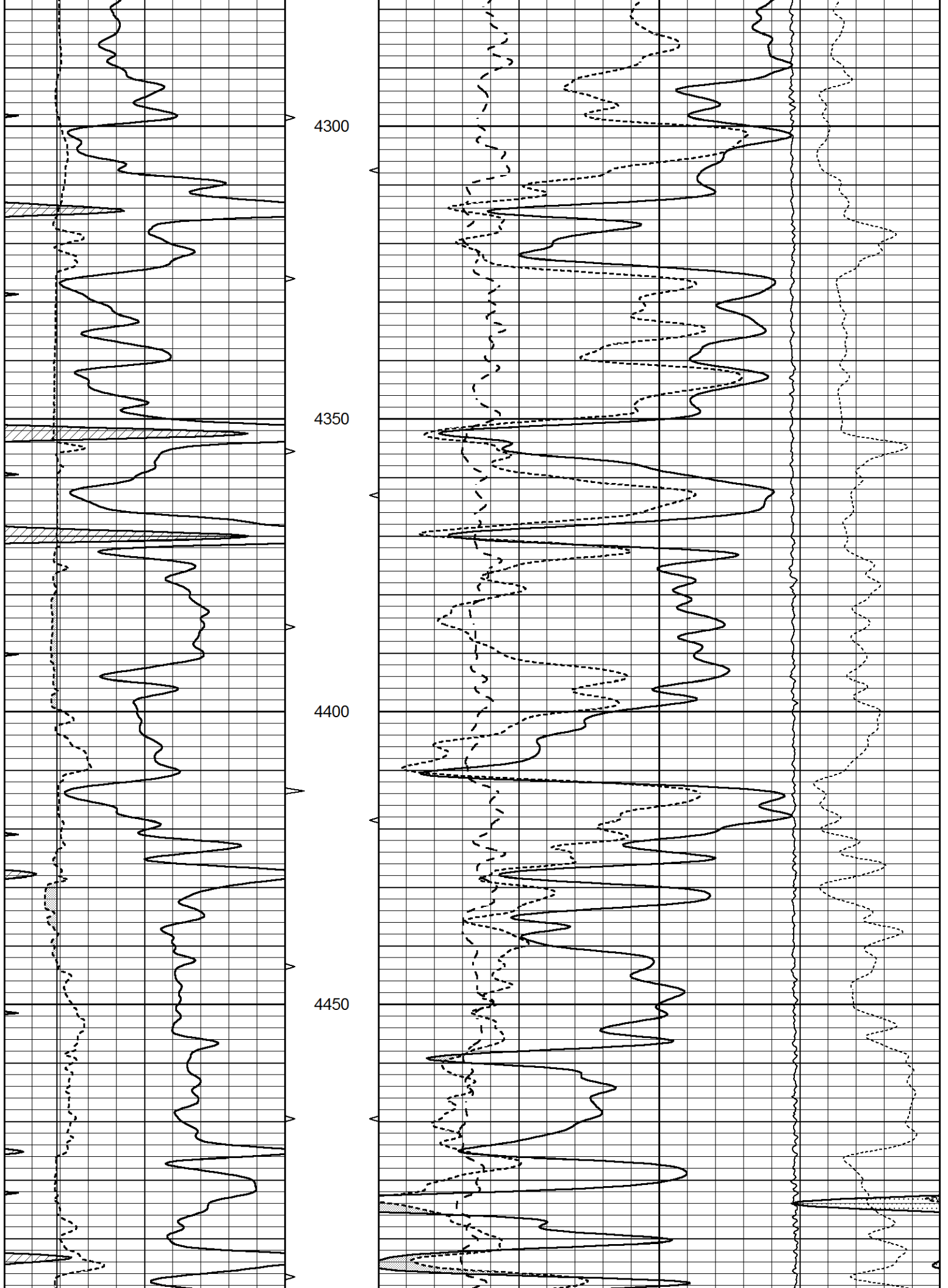
4100

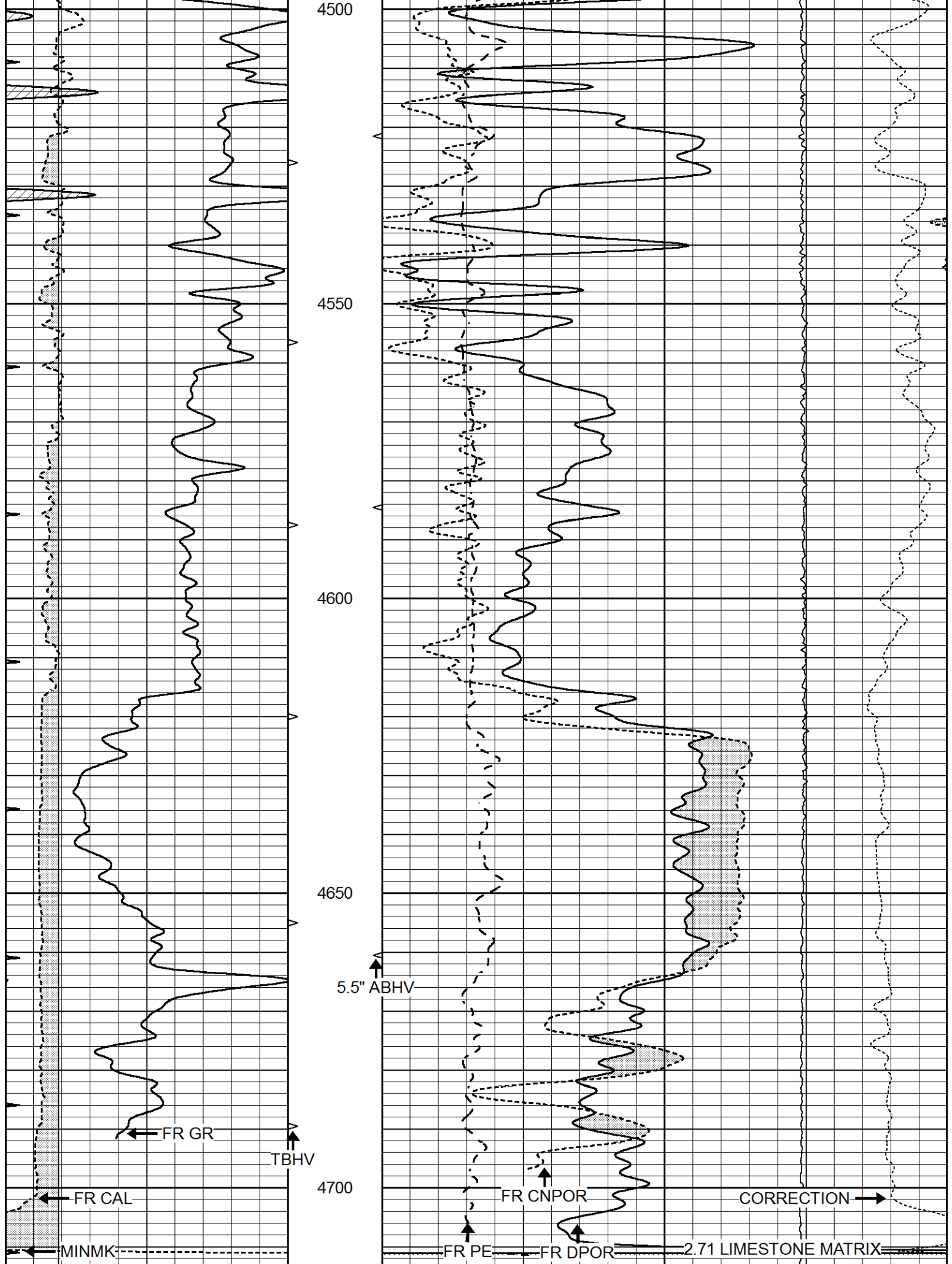
4150

4200

4250







			LTD 4729			LTEN →		
0	GAMMA RAY (GAPI)	150	ABHV	30	COMPENSATED DENSITY (pu)			-10
6	CALIPER (in)	16	10 (ft3) 0	30	COMPENSATED NEUTRON (pu)			-10
0	MINMK	20	TBHV	0	PE	10	-0.25	CORRECTION (g/cc) 0.25
			0 (ft3) 10				0	LTEN (lb) 5000

Calibration Report	
Database File	9586pe.db
Dataset Pathname	pass2.D
Dataset Creation	Sat Aug 02 16:46:58 2025

Dual Induction Calibration Report

Serial-Model:	FW1410-56-Probe
Surface Cal Performed:	Tue Apr 30 11:10:17 2024
Downhole Cal Performed:	Tue Jul 25 12:15:37 2017
After Survey Verification Performed:	Tue Jul 25 12:15:38 2017

Surface Calibration									
		Readings			References			Results	
Loop:	Air	Loop		Air	Loop		m	b	
Deep	0.008	0.765	V	1.000	400.000	mmho/m	520.000	16.000	
Medium	-0.056	0.761	V	1.000	464.000	mmho/m	540.000	195.000	
Internal:	Zero	Cal		Zero	Cal		m	b	
Deep	0.005	0.624	V	0.000	400.000	mmho/m	645.611	-3.034	
Medium	0.012	0.721	V	0.000	464.000	mmho/m	653.591	-7.532	

Downhole Calibration									
		Readings			References			Results	
		Zero	Cal		Zero	Cal		m'	b'
Deep	-0.647	301.329	mmho/m	-0.780	336.378	mmho/m	1.117	-0.058	
Medium	38.256	411.013	mmho/m	39.046	441.706	mmho/m	1.080	-2.280	
LL3		7.471	V		2500.000	Ohm-m			
		0.001	V		20.000	Ohm-m			
		-7.085	V		4000.000	mmho-m			

After Survey Verification									
		Readings			Targets			Results	
		Zero	Cal		Zero	Cal		m'	b'
Deep	0.000	0.000	mmho/m	-0.647	301.329	mmho/m	1.000	0.000	
Medium	0.000	0.000	mmho/m	38.256	411.013	mmho/m	1.000	0.000	
LL3		0.000	Ohm-m		1500.000	Ohm-m			
		0.000	Ohm-m		20.000	Ohm-m			
		0.000	mmho-m		3745.000	mmho-m			

Litho Density Calibration Report  
Serial: 003 Model: PRB

Master Calibration Performed Fri Aug 01 11:20:40 2025

Background	Magnesium	Aluminum	Aluminum+Fe
------------	-----------	----------	-------------

Window 1	1424.0	7274.5	2614.8	2400.8	cps
Window 2	1319.8	6538.4	2382.0	2203.6	cps
Window 3	1217.6	5121.1	2012.2	1909.9	cps
Window 4	332.0	333.7	334.9	328.8	cps
Long Space	0.0	5218.6	1062.2	883.8	cps
Short Space	1.8	2242.5	1399.2	1191.8	cps
Rho		1.7100	2.5900	0.0000	g/cc
Pe		2.0000	2.7500	5.7900	

Rib Angle : 43.5      Rib Slope : 0.949      Density/Spine Ratio : 0.530  
 Spine Angle : 73.5      Spine Slope : 3.375      Spine Intercept : -17.5

Before Survey Verification

Performed Wed Dec 31 18:00:00 1969

Window 1	0.0	0.0	0.0	0.0	cps
Window 2	0.0	0.0	0.0	0.0	cps
Window 3	0.0	0.0	0.0	0.0	cps
Window 4	0.0	0.0	0.0	0.0	cps
Long Space	0.0	0.0	0.0	0.0	cps
Short Space	0.0	0.0	0.0	0.0	cps
Measured Rho		0.0000	0.0000	0.0000	g/cc
Measured Correction		0.0000	0.0000	0.0000	g/cc
Measured Pe			0.0000	0.0000	

After Survey Verification

Performed Wed Dec 31 18:00:00 1969

Window 1	0.0	0.0	0.0	0.0	cps
Window 2	0.0	0.0	0.0	0.0	cps
Window 3	0.0	0.0	0.0	0.0	cps
Window 4	0.0	0.0	0.0	0.0	cps
Long Space	0.0	0.0	0.0	0.0	cps
Short Space	0.0	0.0	0.0	0.0	cps
Measured Rho		0.0000	0.0000	0.0000	g/cc
Measured Correction		0.0000	0.0000	0.0000	g/cc
Measured Pe			0.0000	0.0000	

Compensated Neutron Calibration Report

Serial Number: 080621PMC  
 Tool Model: NABORS

PRE-SURVEY VERIFICATION

Detector	Readings	Measured	Target
Short Space	cps		pu
Long Space	cps	pu	pu

POST-SURVEY VERIFICATION

Detector	Readings	Measured	Target
Short Space	cps		pu
Long Space	cps	pu	pu

Gamma Ray Calibration Report

Serial Number: 46001  
 Tool Model: Probe1  
 Performed: Thu Apr 20 09:55:57 2023

Calibrator Value:	1.0	GAPI
Background Reading:	0.0	cps
Calibrator Reading:	1.0	cps
Sensitivity:	0.4300	GAPI/cps