



DUAL INDUCTION LOG

Company UNION VALLEY PETROLEUM CORP.
 Well RUTH ANN #1-6
 Field UNNAMED
 County SUMNER
 State KANSAS

Company UNION VALLEY PETROLEUM CORP.
 Well RUTH ANN #1-6
 Field UNNAMED
 County SUMNER State KANSAS

Location: API #: 15-191-22867-0000
 1490 FNL & 1375 FEL
 NE - NE - SW - NE
 SEC 6 TWP 35S RGE 4W
 Permanent Datum GROUND LEVEL Elevation 1229
 Log Measured From KELLY BUSHING 13' A.G.L.
 Drilling Measured From KELLY BUSHING
 Other Services
 CDL/CNL/PE
 MEL/SON
 Elevation
 K.B. 1242
 D.F. 1240
 G.L. 1229

Date	8/2/25		
Run Number	ONE		
Depth Driller	4730		
Depth Logger	4729		
Bottom Logged Interval	4727		
Top Log Interval	00		
Casing Driller	8.625 @ 395		
Casing Logger	395		
Bit Size	7.875		
Type Fluid in Hole	CHEMICAL MUD	CHLORIDES 7.000 PPM	
Density / Viscosity	9.4/40		
pH / Fluid Loss	10.5/8.4		
Source of Sample	FLOWLINE		
Rm @ Meas. Temp	.650 @ 101F		
Rmf @ Meas. Temp	.488 @ 101F		
Rmc @ Meas. Temp	.780 @ 101F		
Source of Rmf / Rmc	MEASUREMENT		
Rm @ BHT	.534 @ 123F		
Time Circulation Stopped	2 HOURS		
Time Logger on Bottom	3:30 PM		
Maximum Recorded Temperature	123F		
Equipment Number	3802		
Location	HAYS, KANSAS		
Recorded By	COLE ROBBEN	TJ DREILING	
Witnessed By	CHUCK ZORIO		

<<< Fold Here >>>

All interpretations are opinions based on inferences from electrical or other measurements and we cannot and do not guarantee the accuracy or correctness of any interpretation, and we shall not, except in the case of gross or willful negligence on our part, be liable or responsible for any loss, costs, damages, or expenses incurred or sustained by anyone resulting from any interpretation made by any of our officers, agents or employees. These interpretations are also subject to our general terms and conditions set out in our current Price Schedule.

Comments

THANK YOU FOR USING ELI WIRELINE SERVICES, HAYS, KS. (785) 628-6395

DIRECTIONS:

FROM BLUFF CITY, KANSAS - 1.5 MILES SOUTH TO SE 70 ROAD, 5 MILES EAST TO S. FALLS ROAD, 1 MILE SOUTH, SOUTH INTO THROUGH GATE

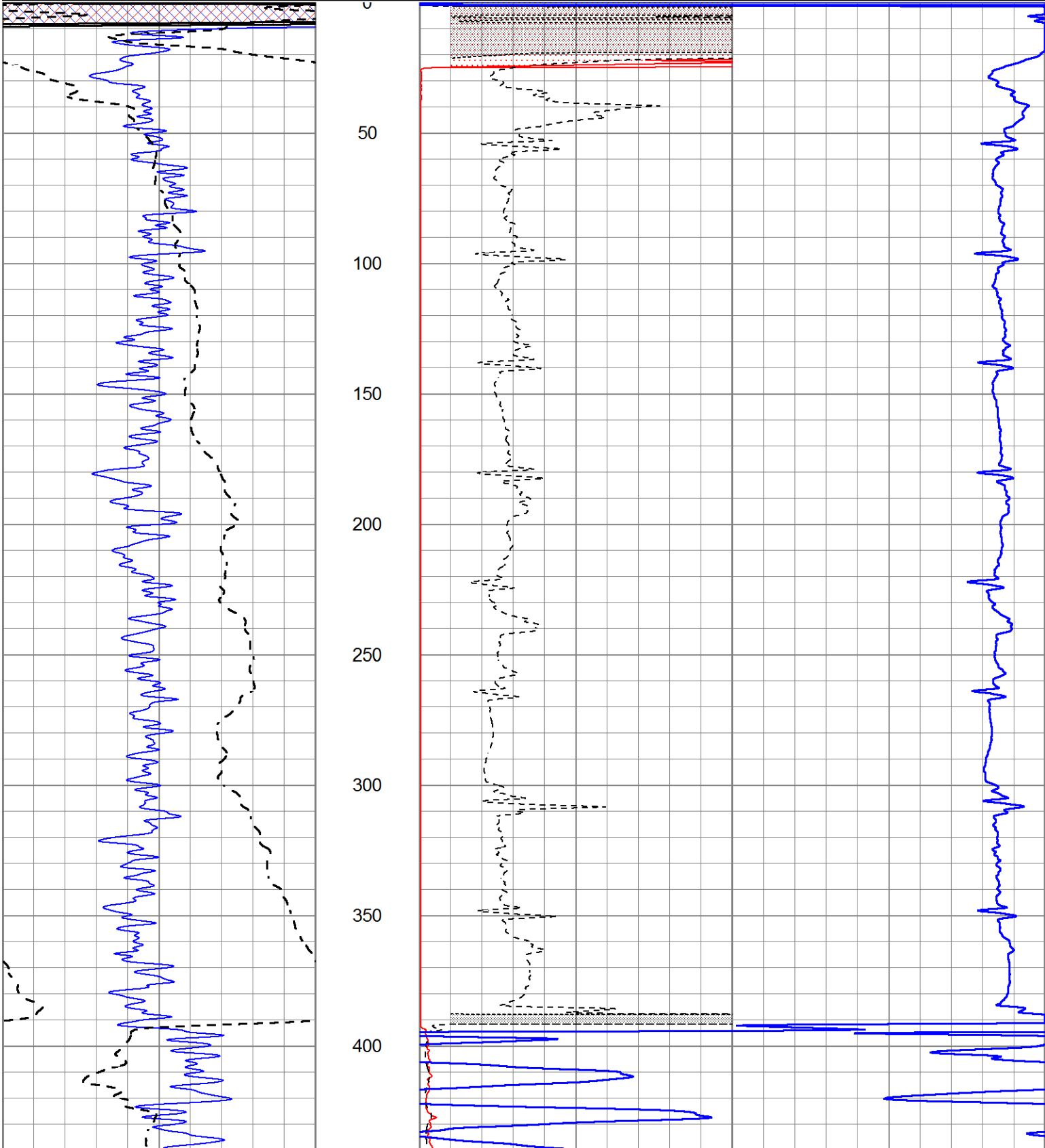


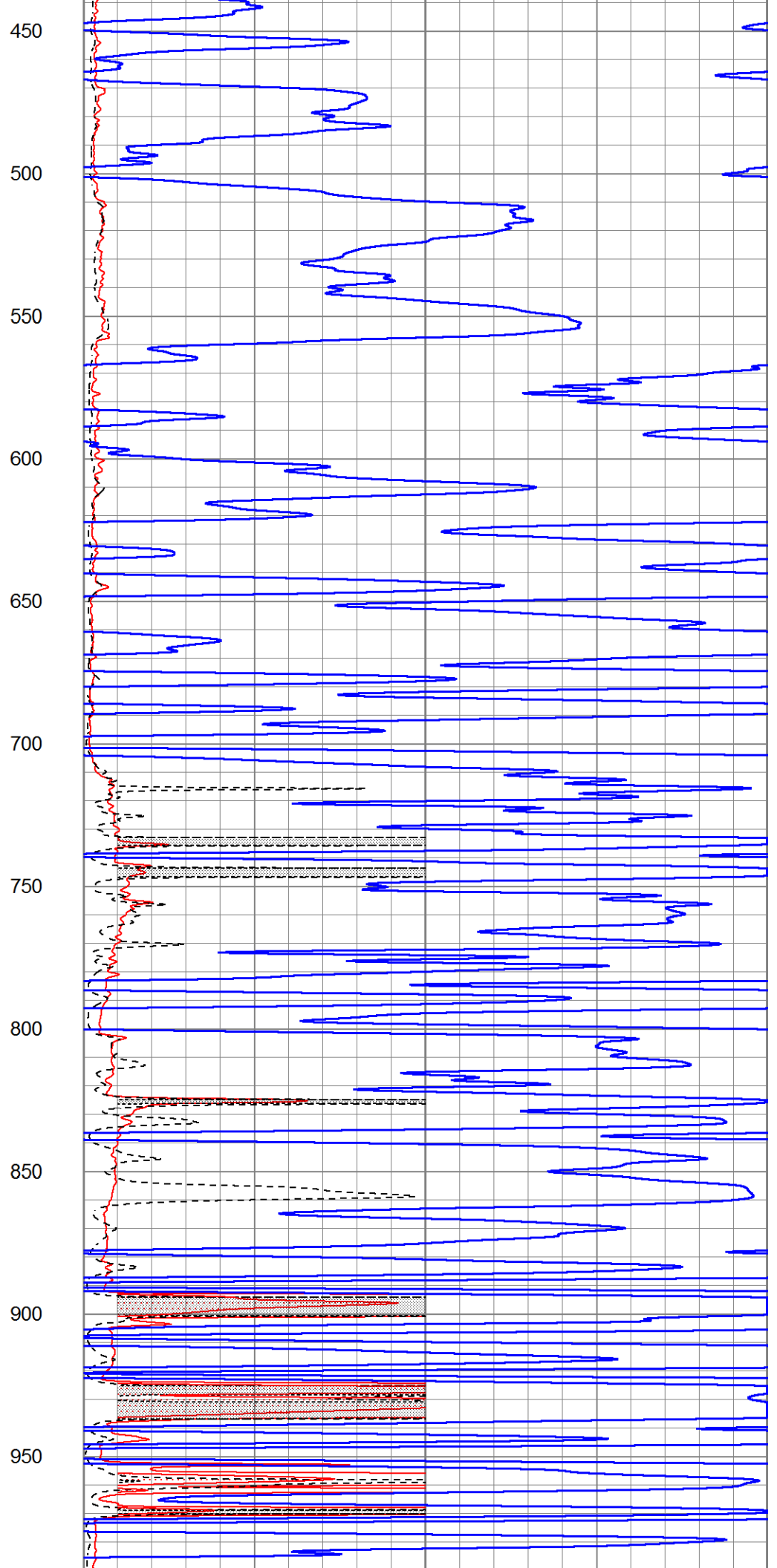
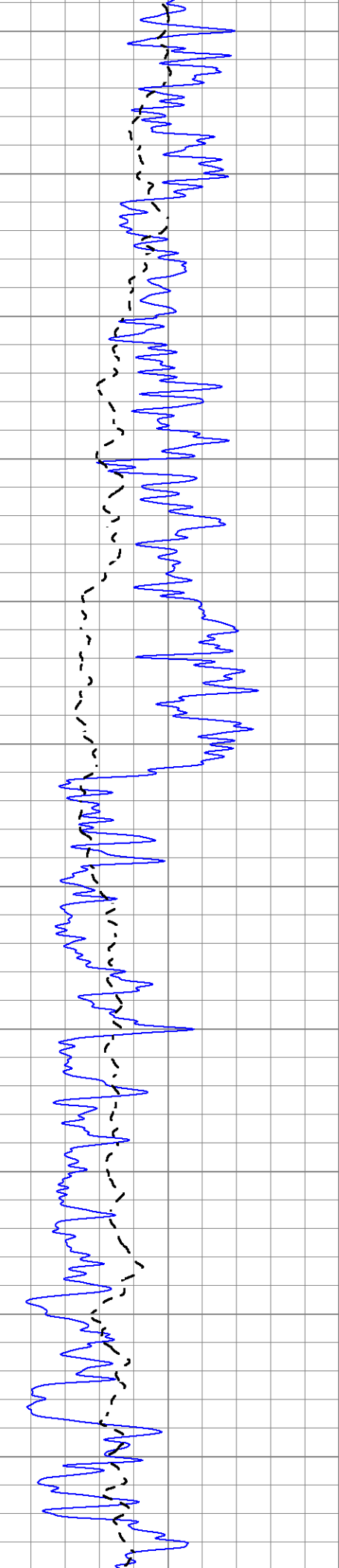
MAIN SECTION

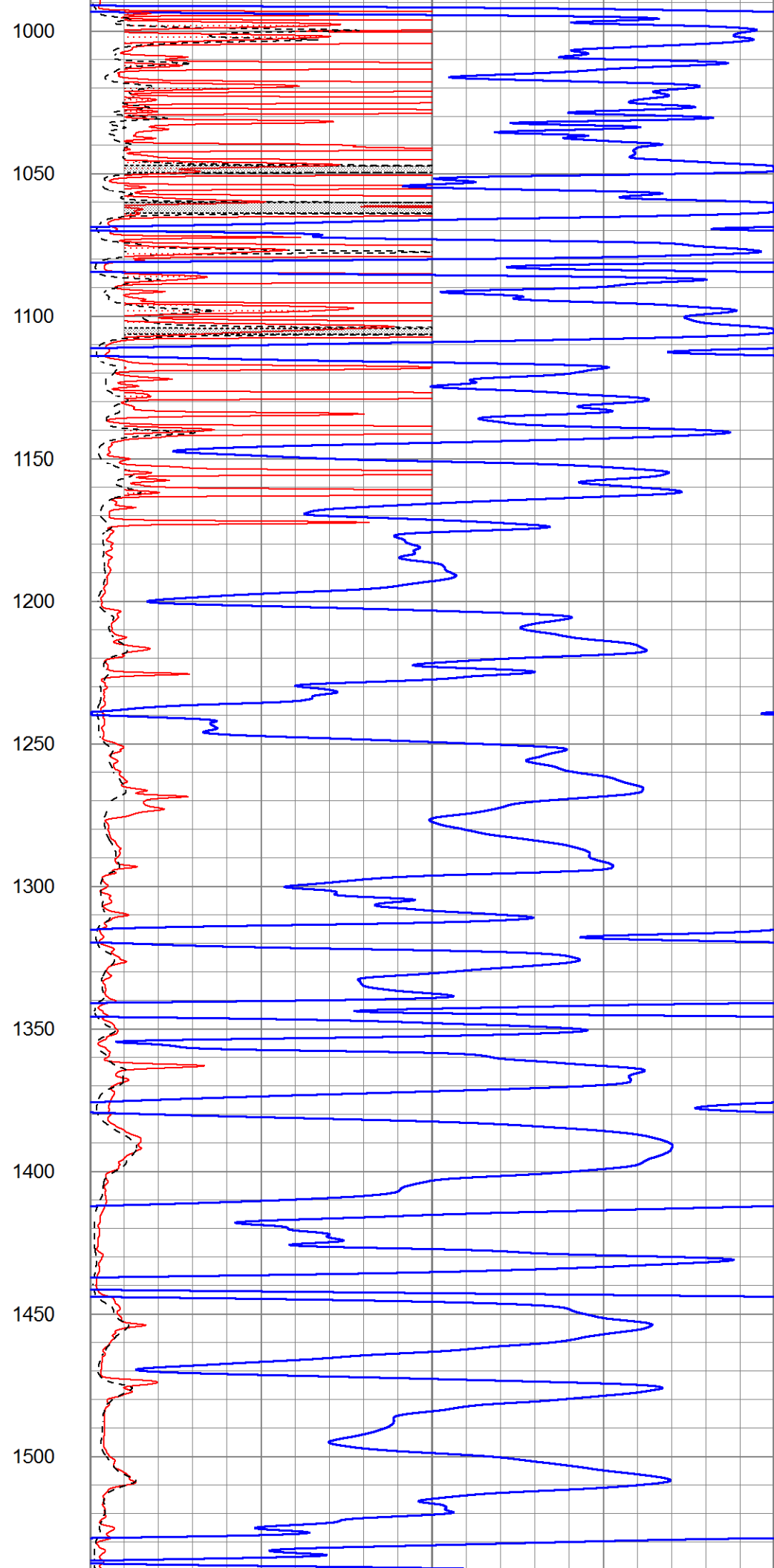
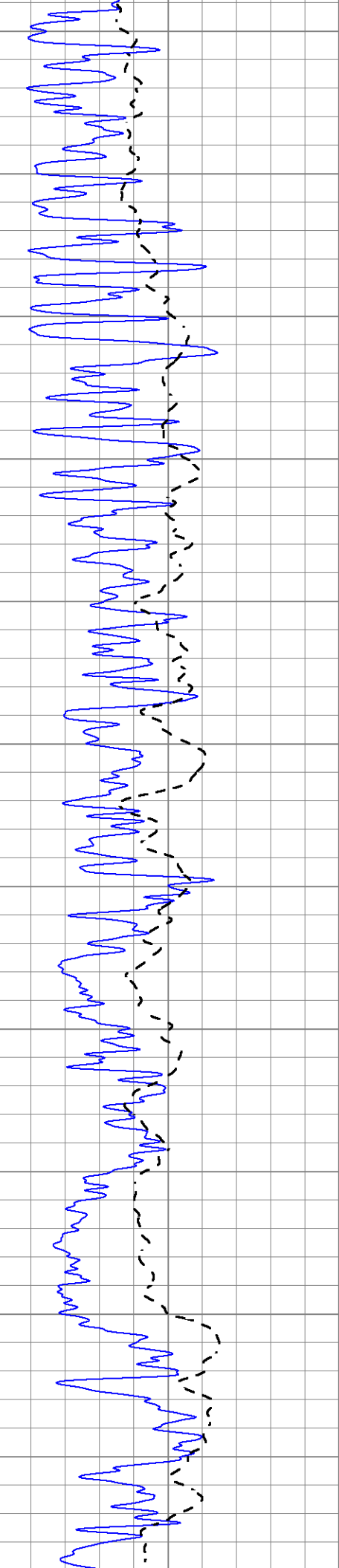
Database File 9586pe.db
 Dataset Pathname pass2.M
 Presentation Format _dil2
 Dataset Creation Sat Aug 02 18:12:58 2025
 Charted by Depth in Feet scaled 1:600

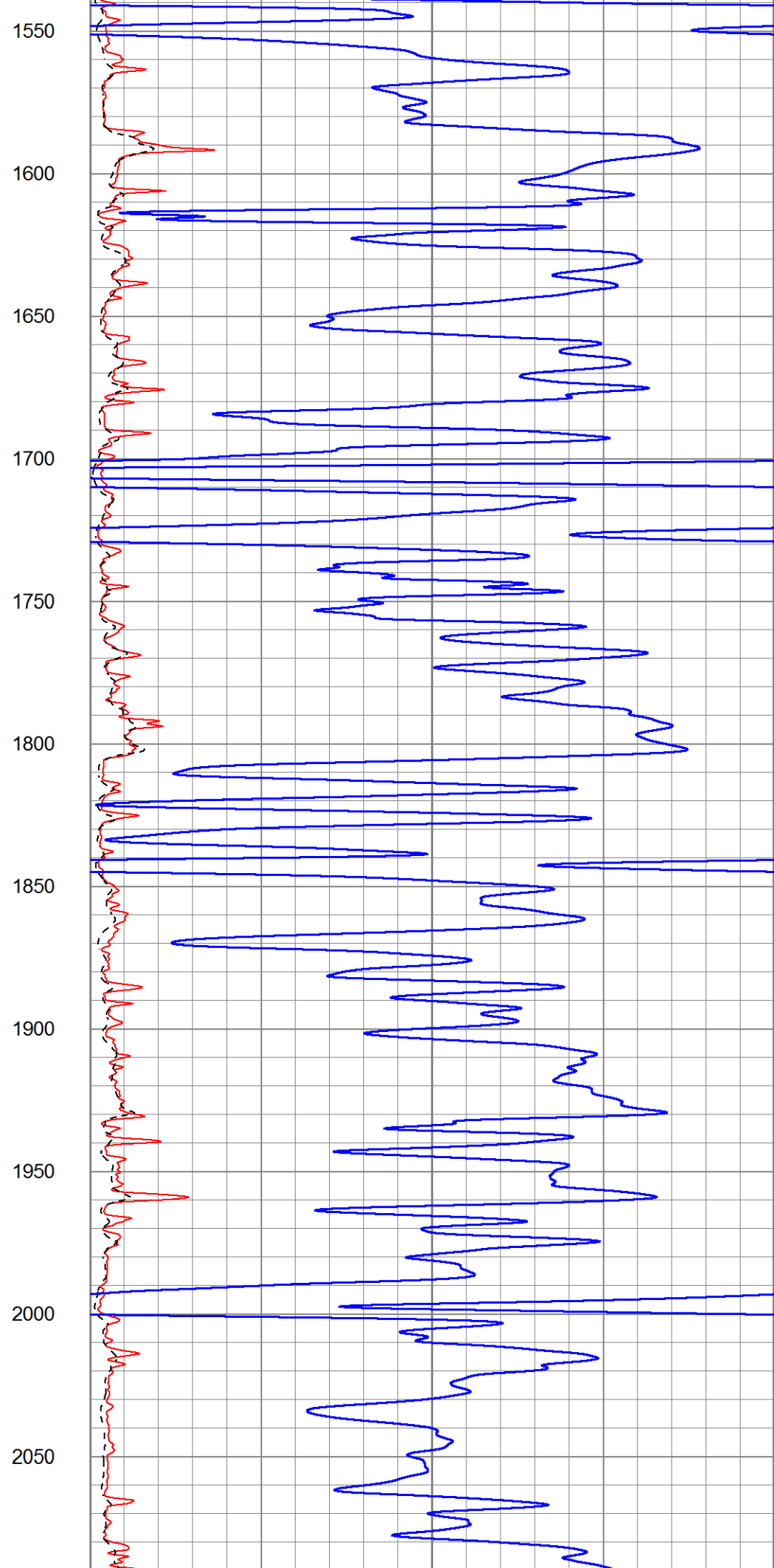
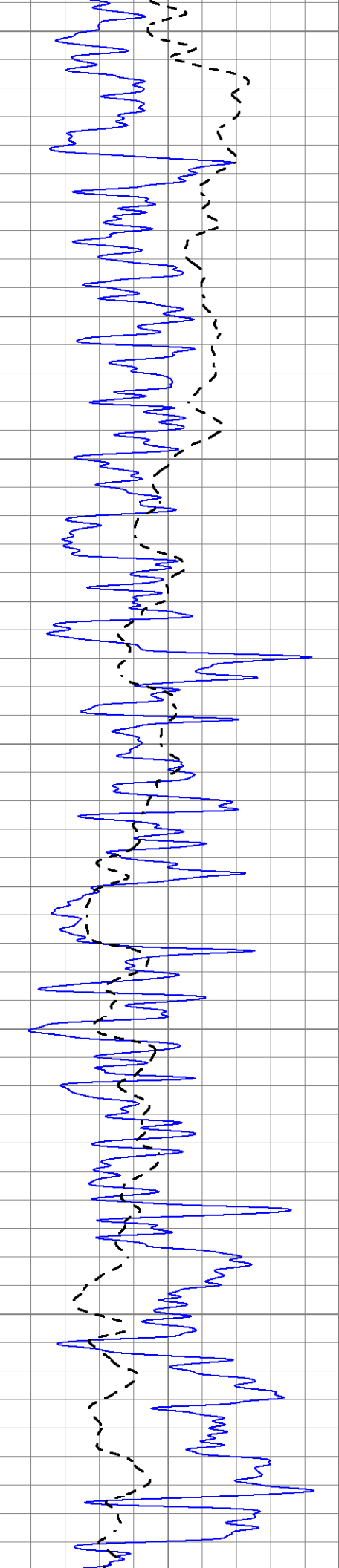
0 Gamma Ray (GAPI) 150
 -100 SP (mV) 100

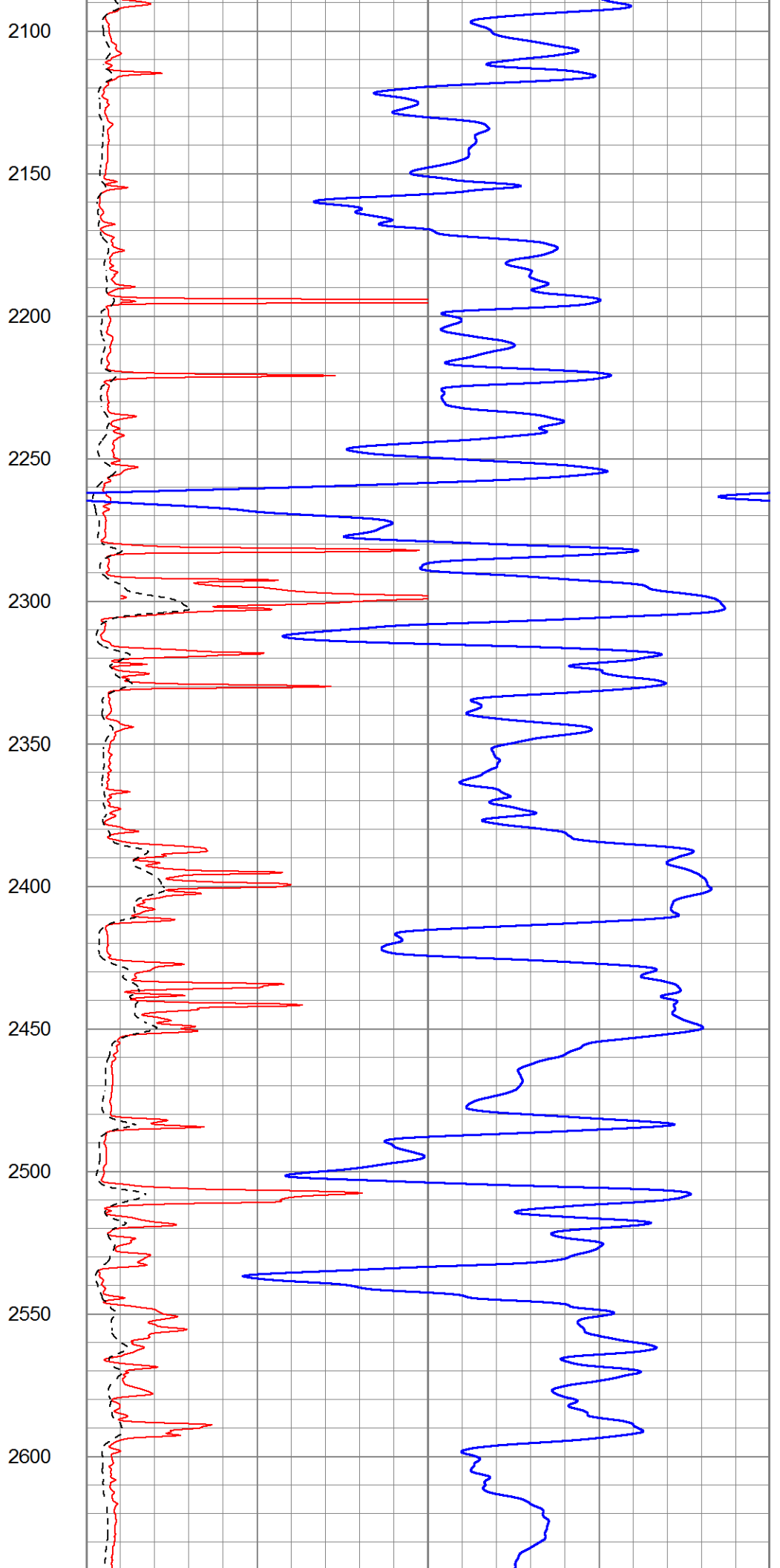
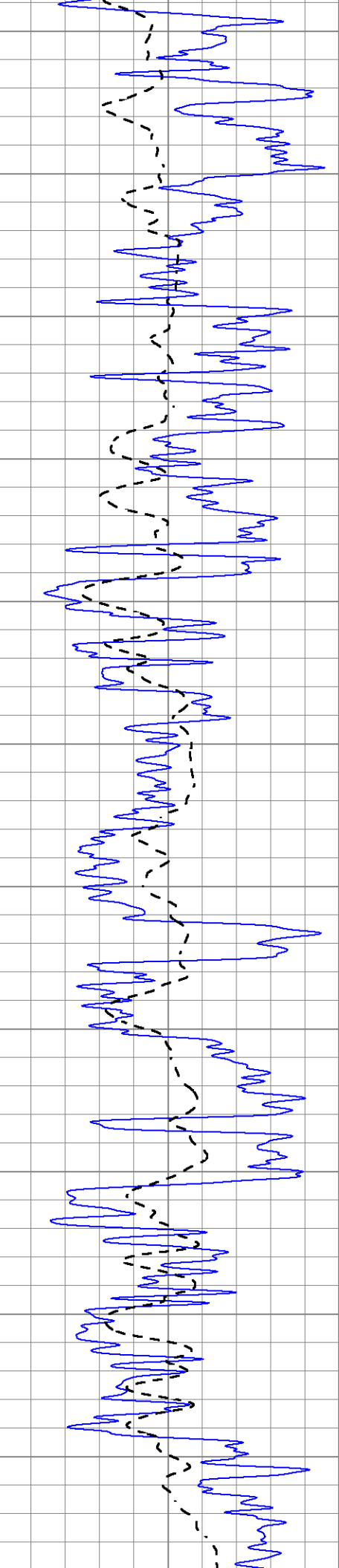
1000 CILD (mmho/m) 0
 0 RLL3 (Ohm-m) 50
 0 Deep Induction (Ohm-m) 50
 50 RILD X10 (Ohm-m) 500
 50 RLL3 X10 (Ohm-m) 500

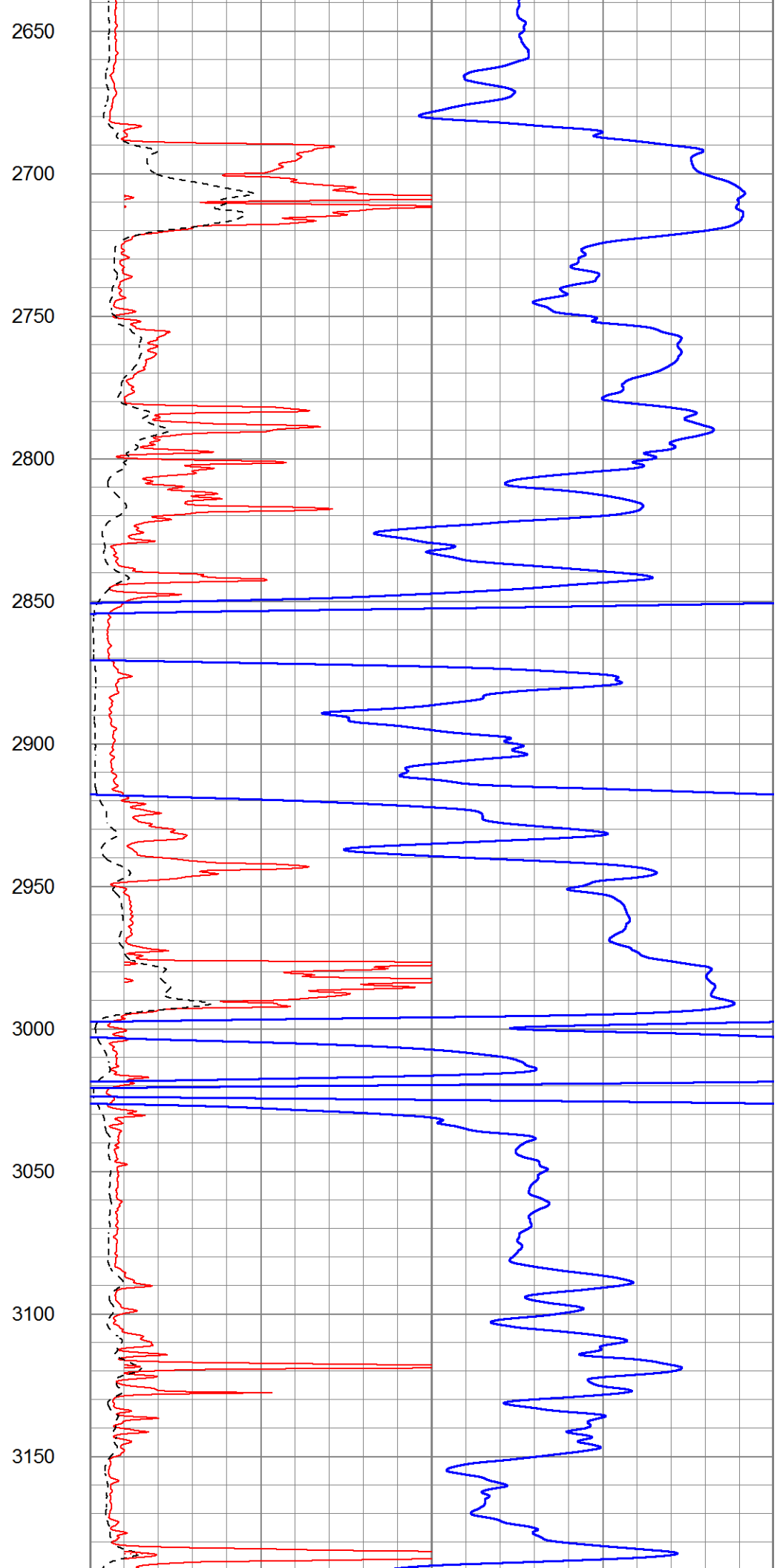
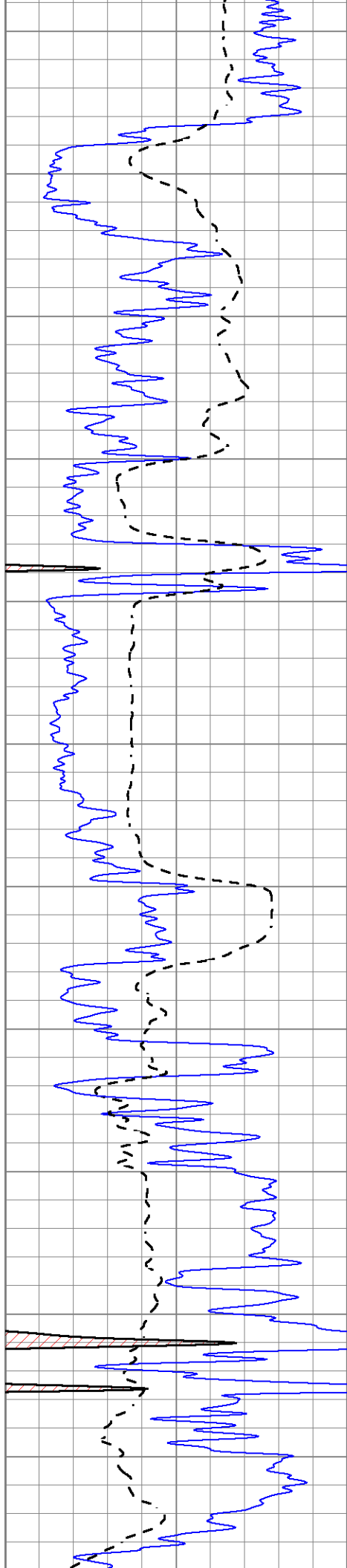


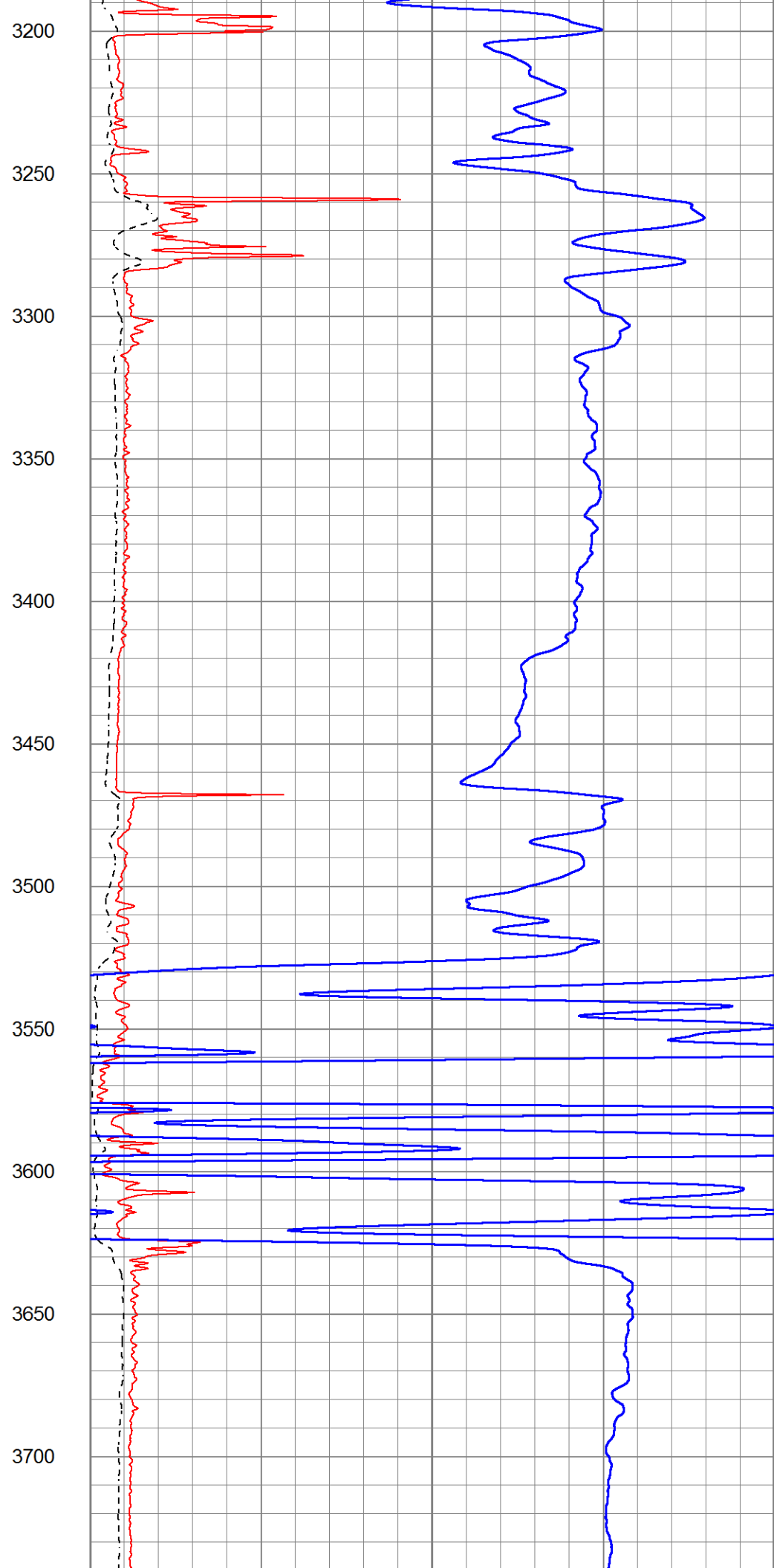
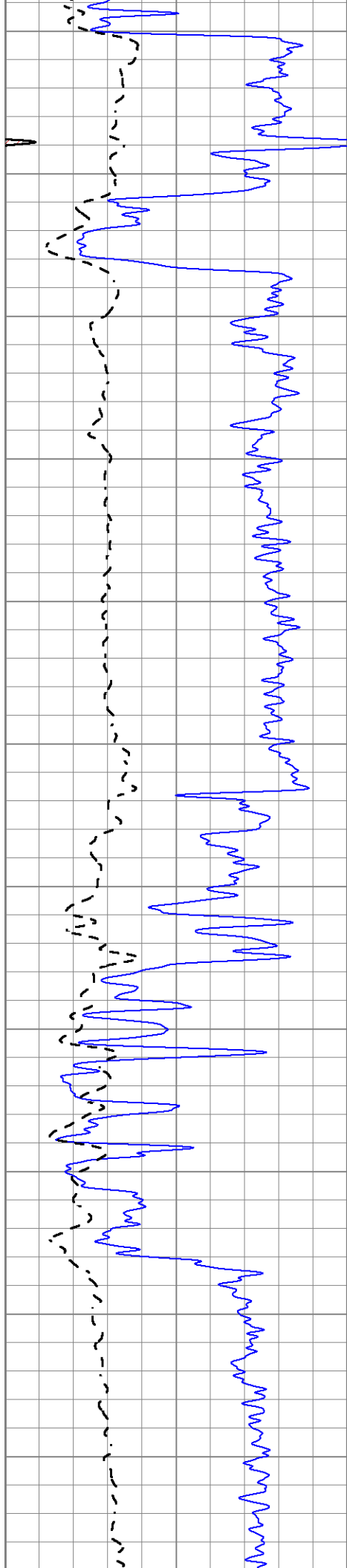


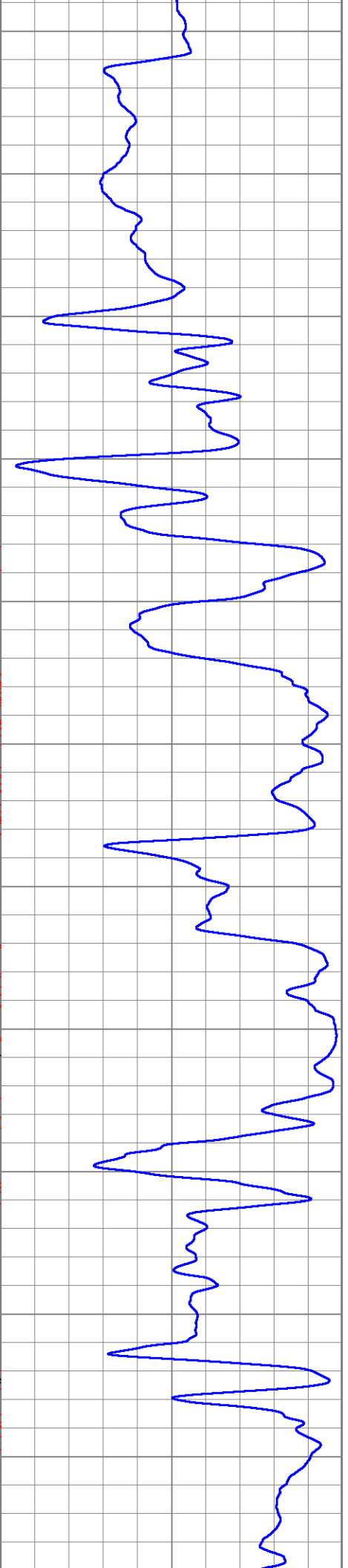
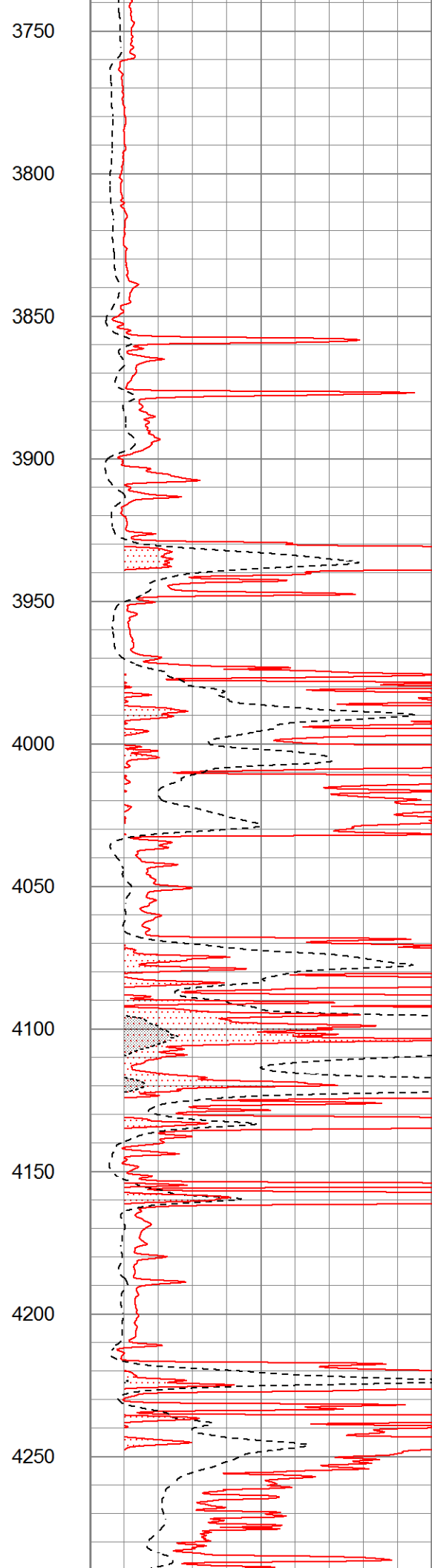
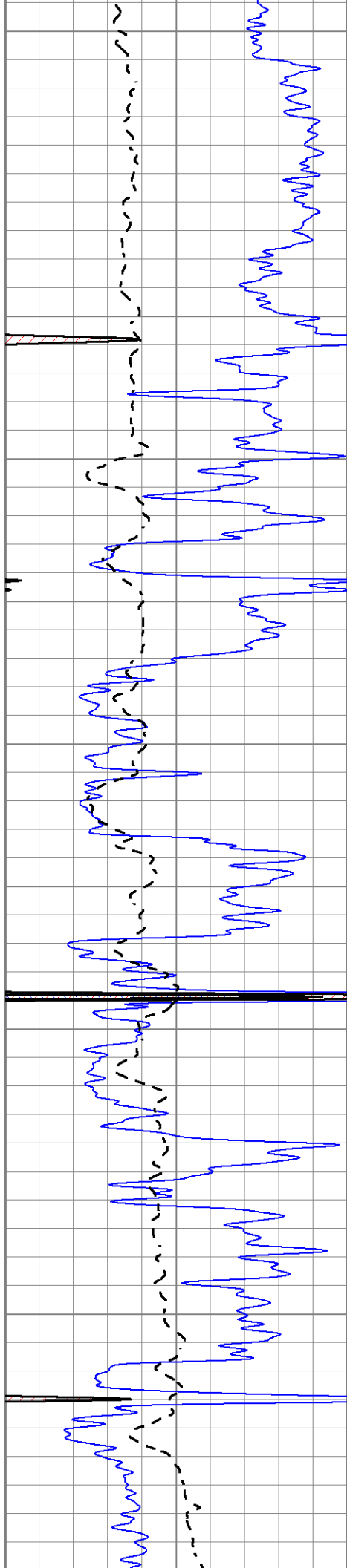


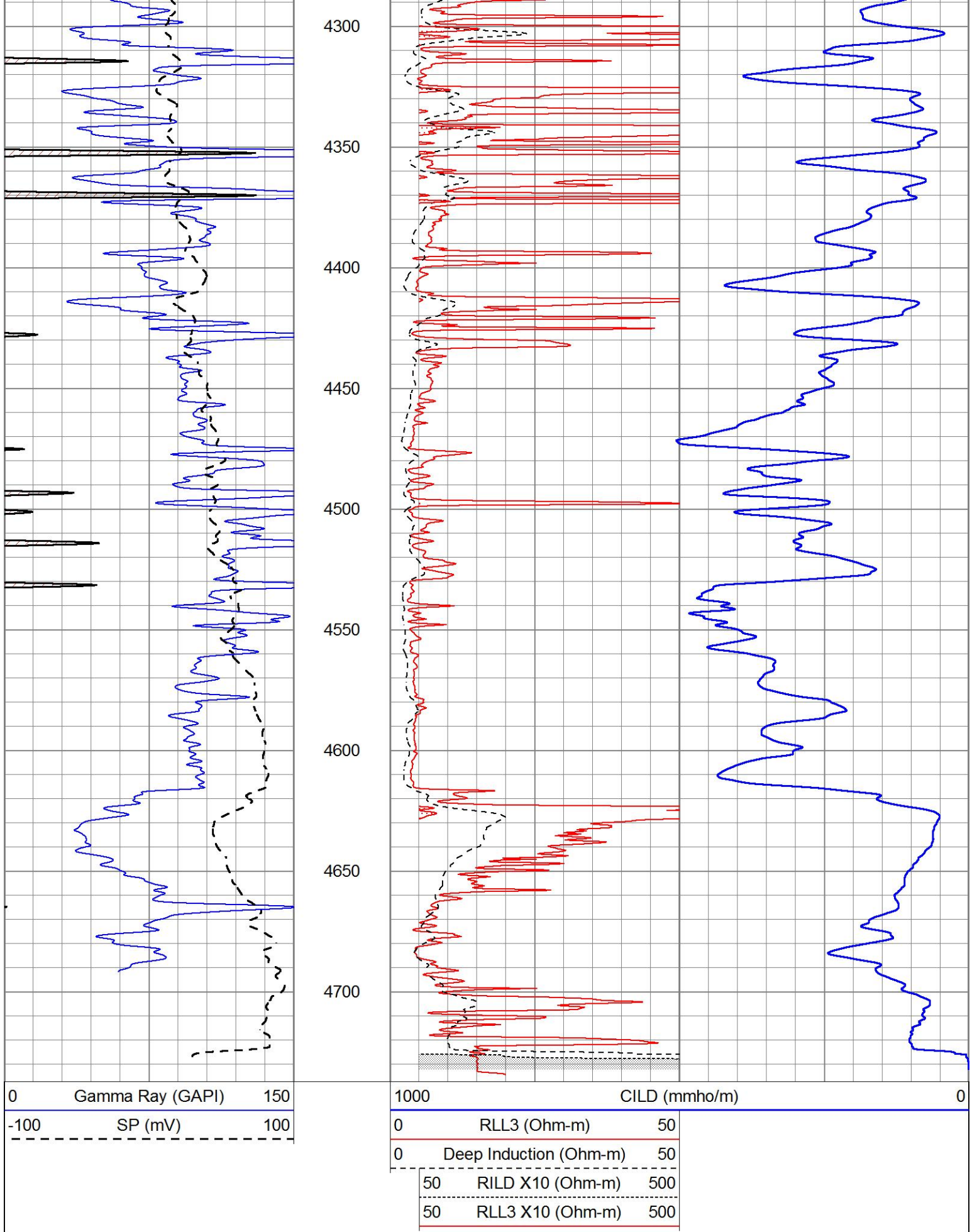












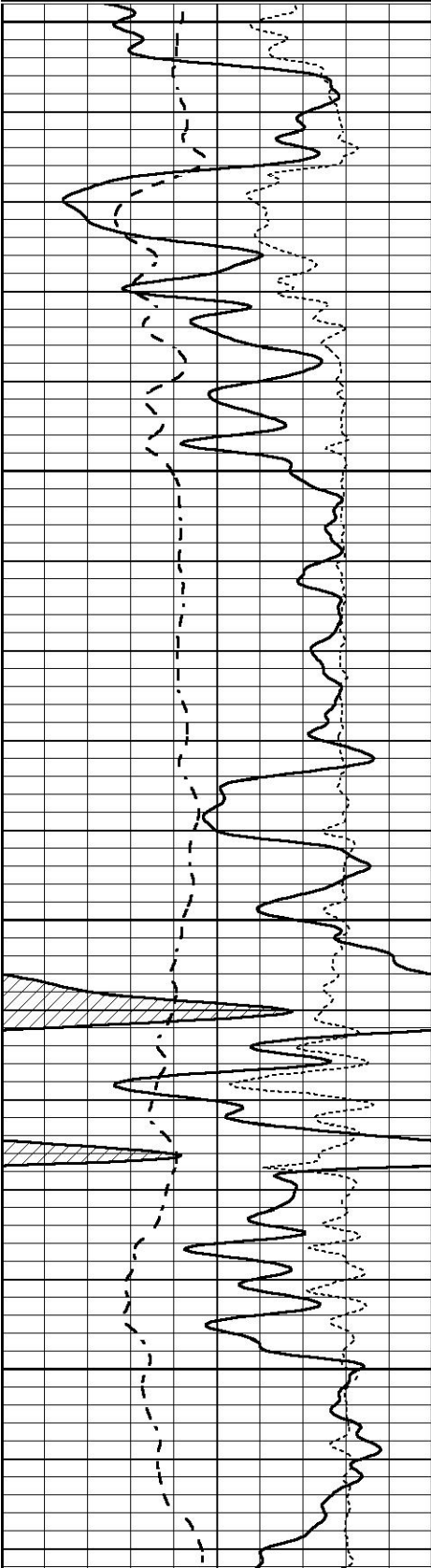
MAIN SECTION

MAIN SECTION

Database File 9586pe.db
Dataset Pathname pass2.M
Presentation Format _dil
Dataset Creation Sat Aug 02 18:12:58 2025
Charted by Depth in Feet scaled 1:240

0	GAMMA RAY (GAPI)	150
-100	SP (mV)	100
-250	Rxo/Rt	50

0.2	SHALLOW GUARD (Ohm-m)	2000
0.2	MEDIUM INDUCTION (Ohm-m)	2000
0.2	DEEP INDUCTION (Ohm-m)	2000

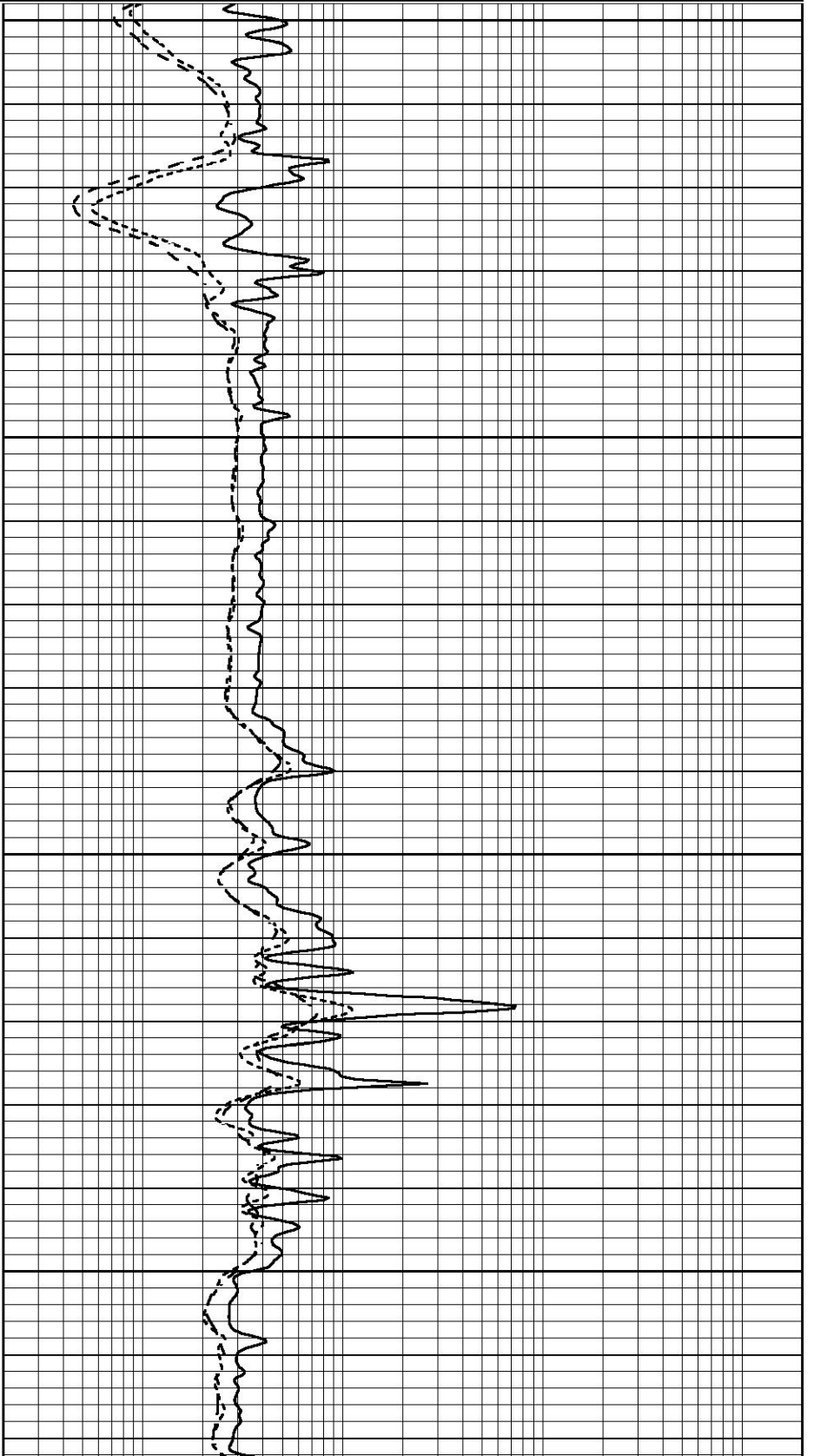


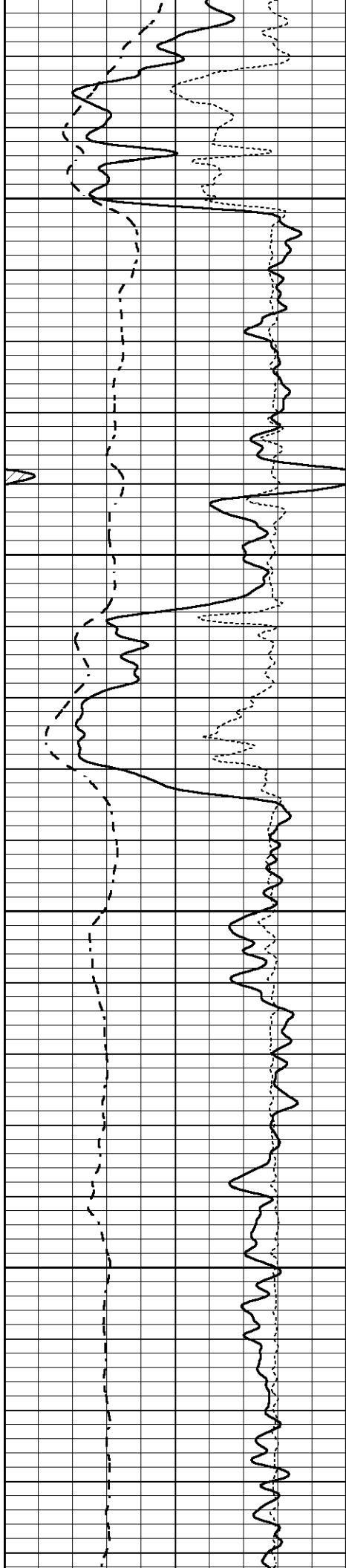
3000

3050

3100

3150



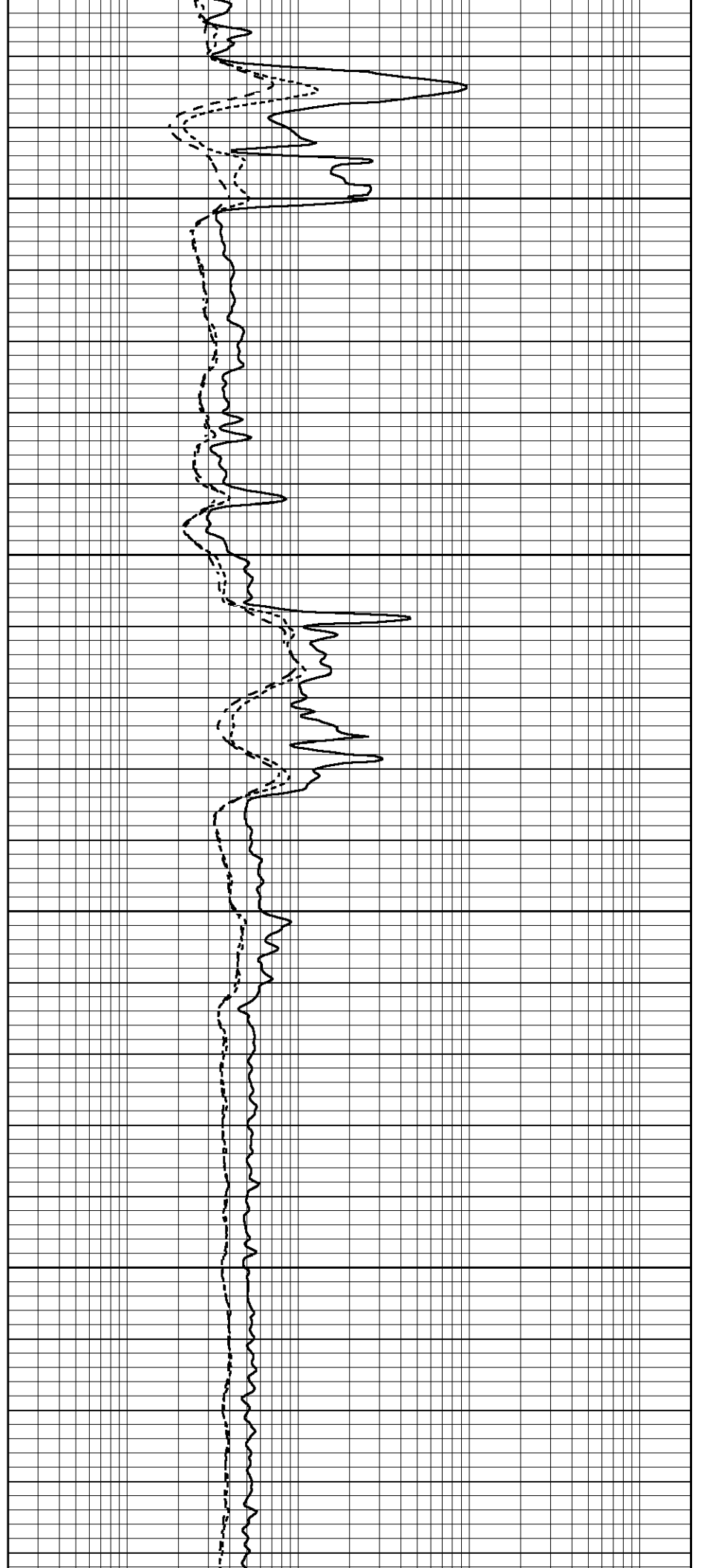


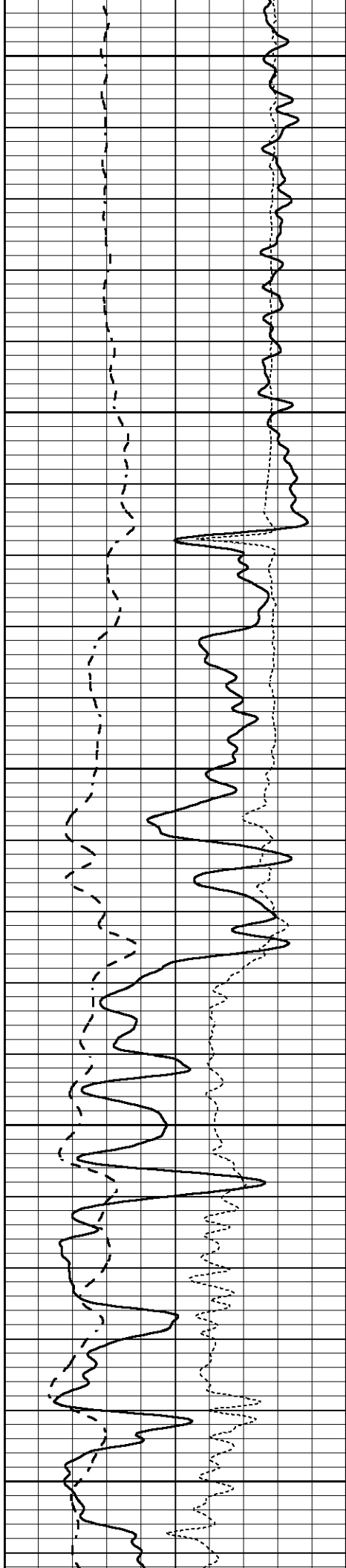
3200

3250

3300

3350





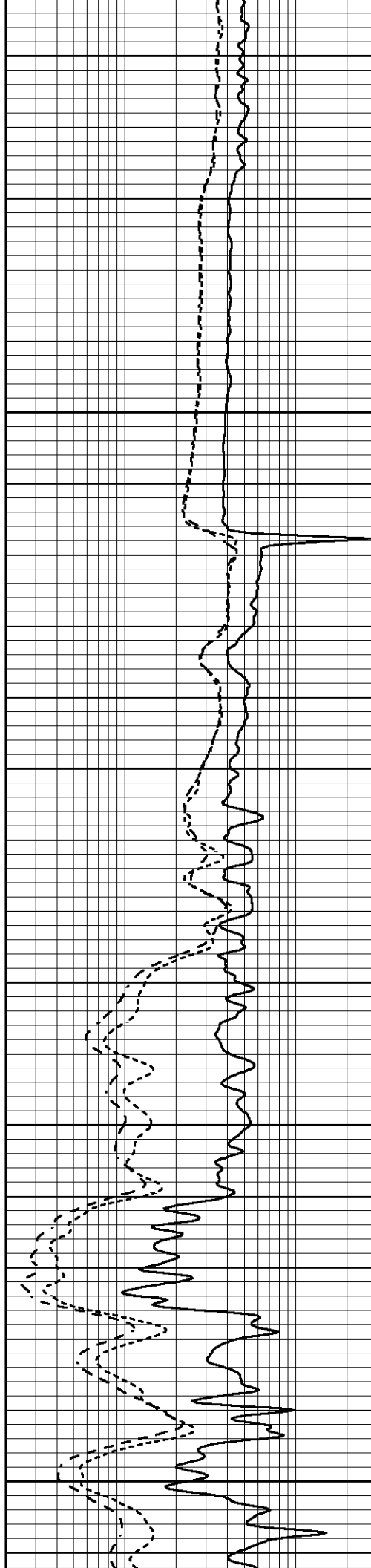
3400

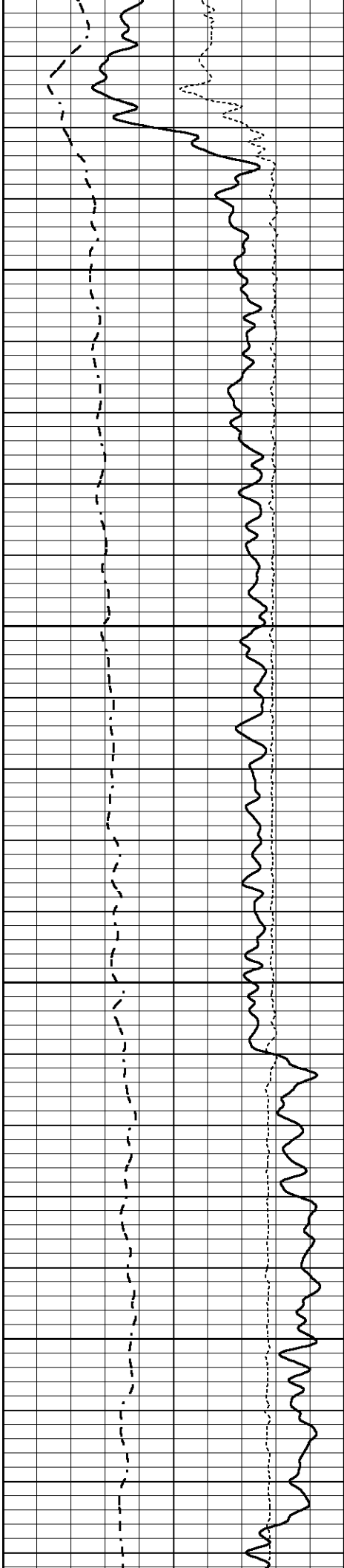
3450

3500

3550

3600



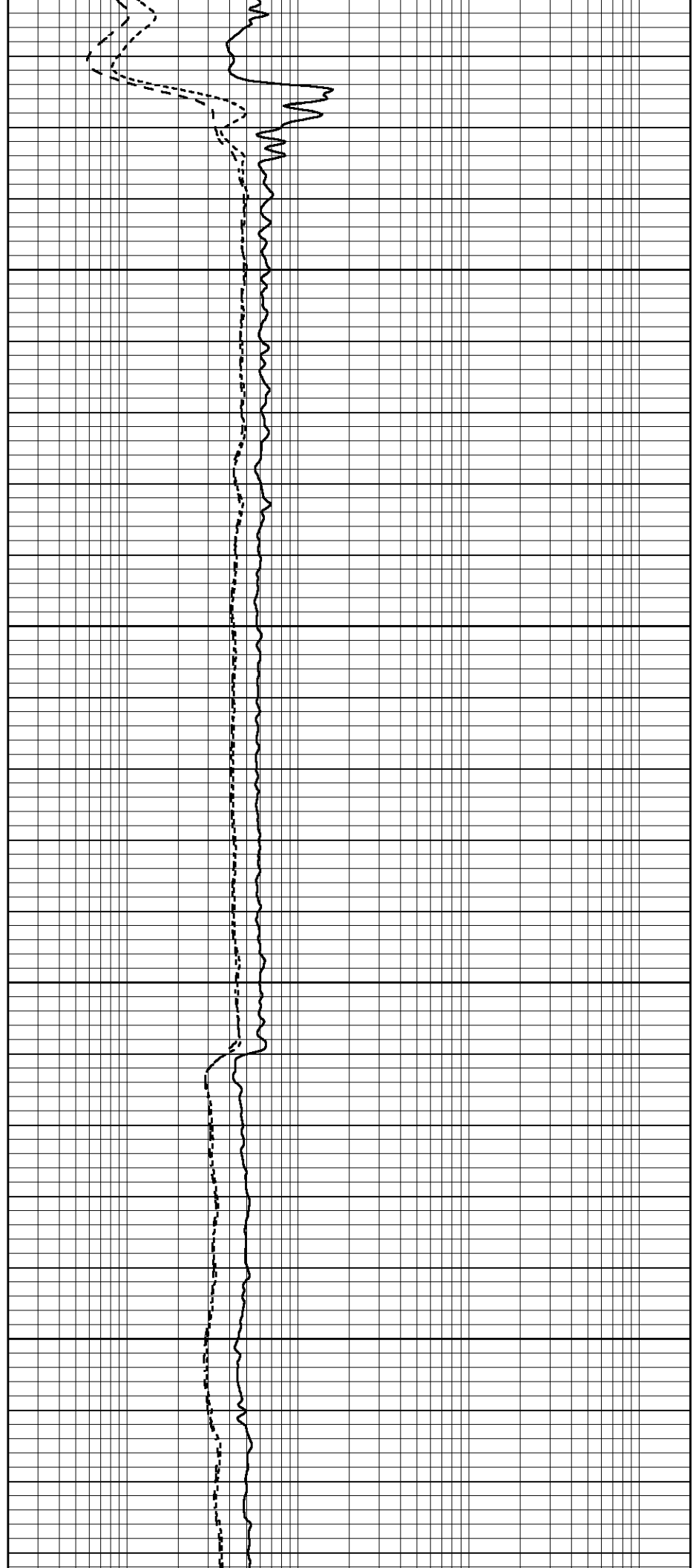


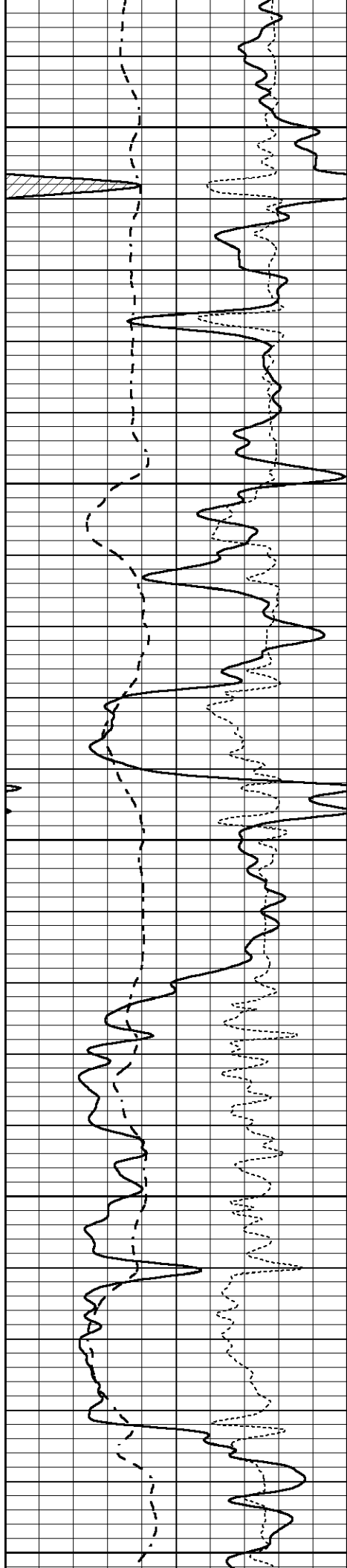
3650

3700

3750

3800





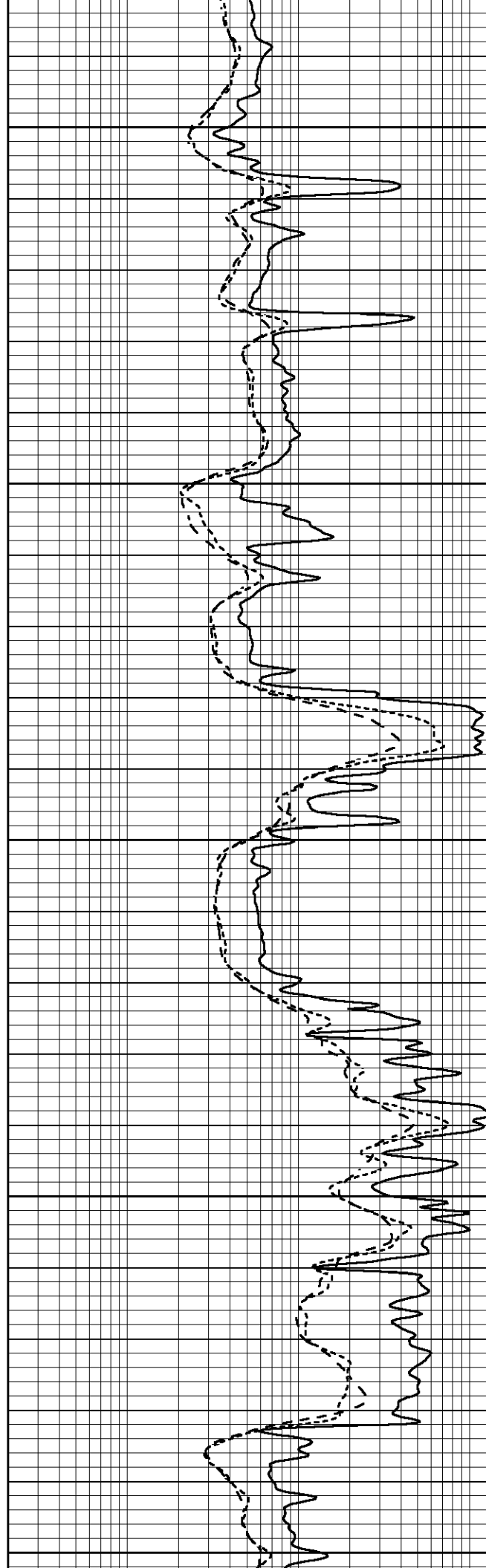
3850

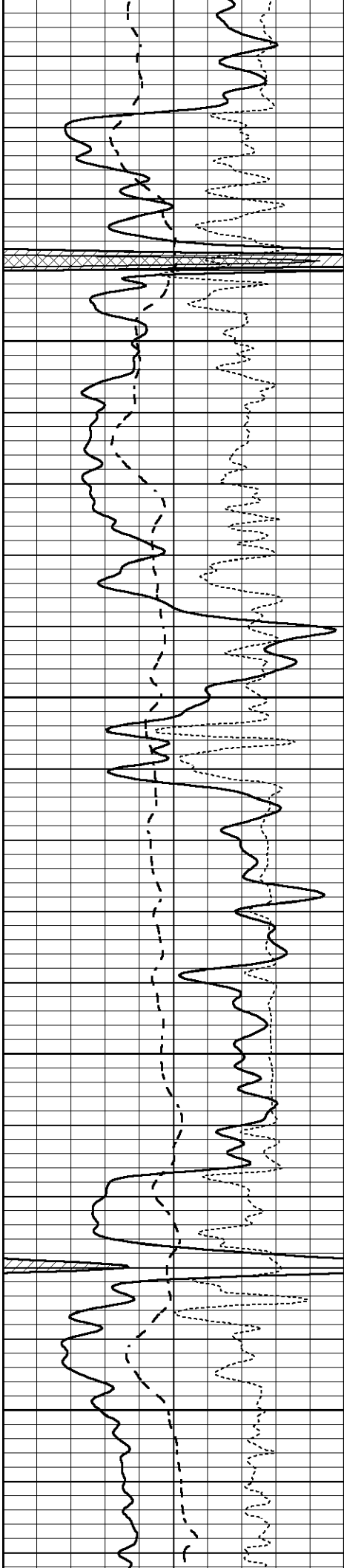
3900

3950

4000

4050



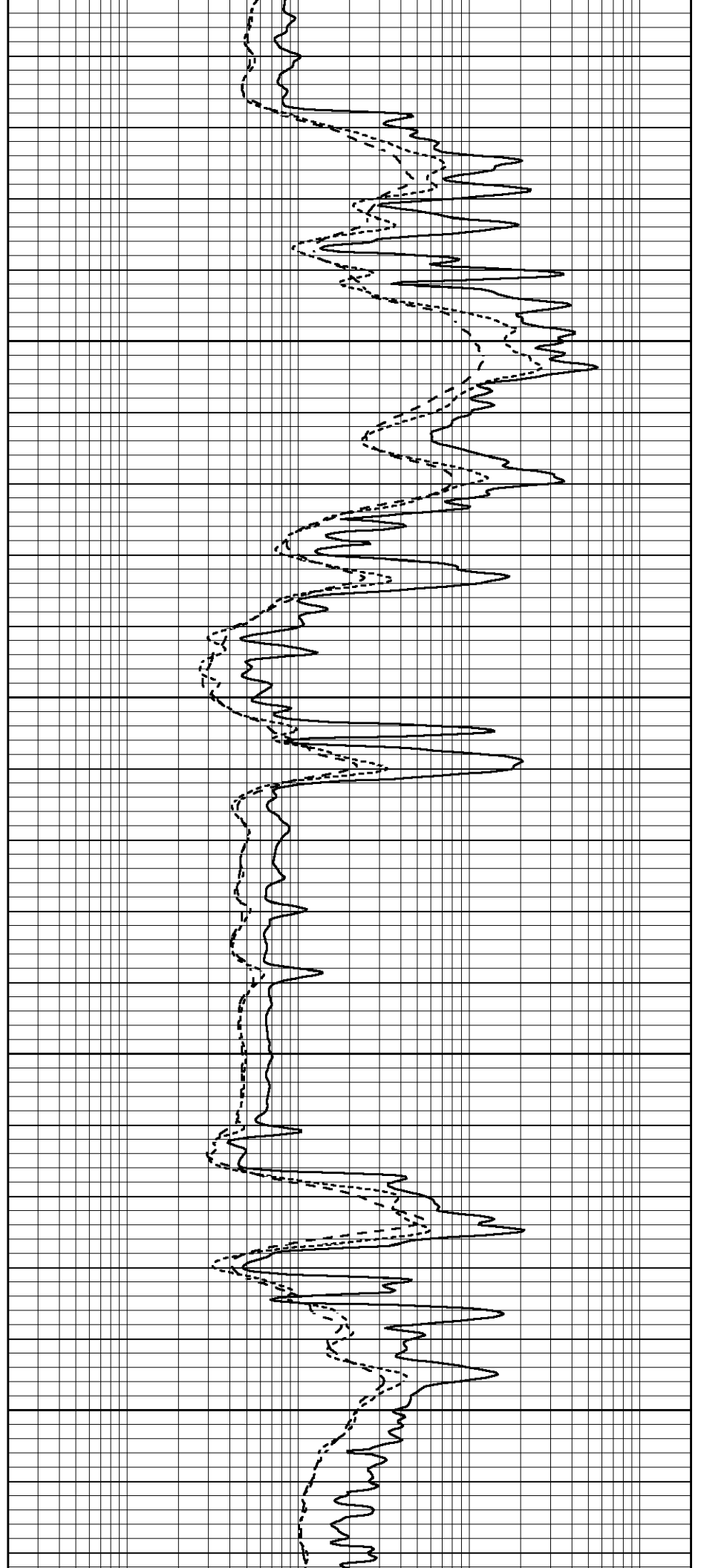


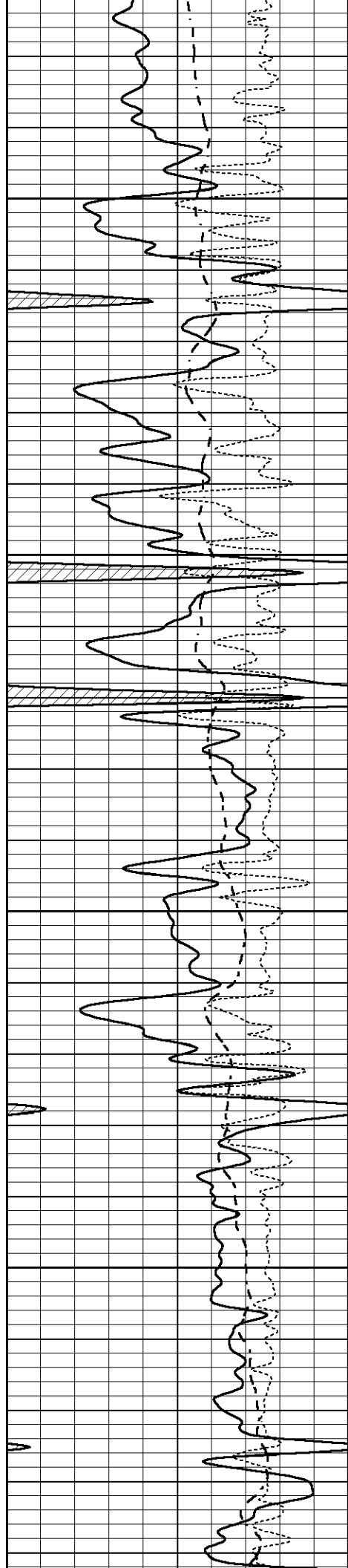
4100

4150

4200

4250



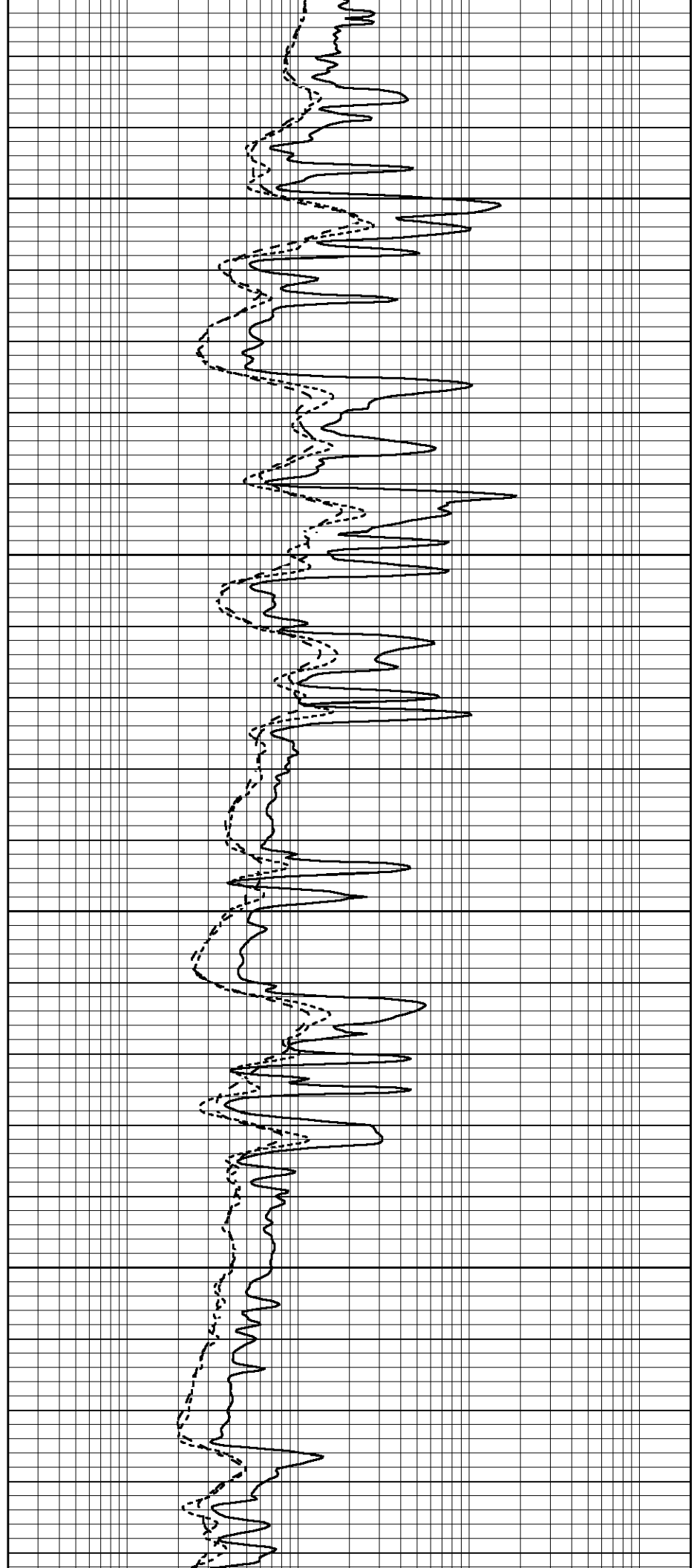


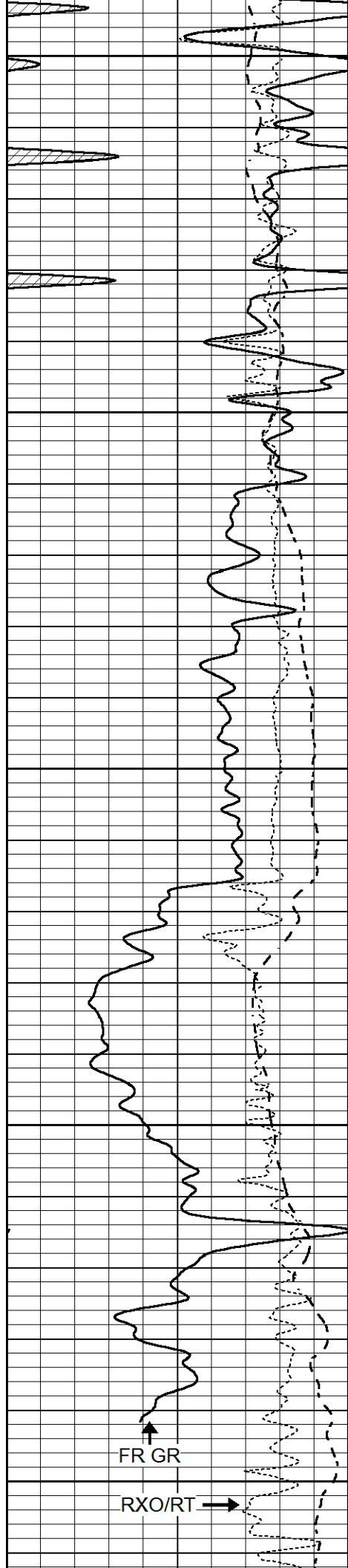
4300

4350

4400

4450





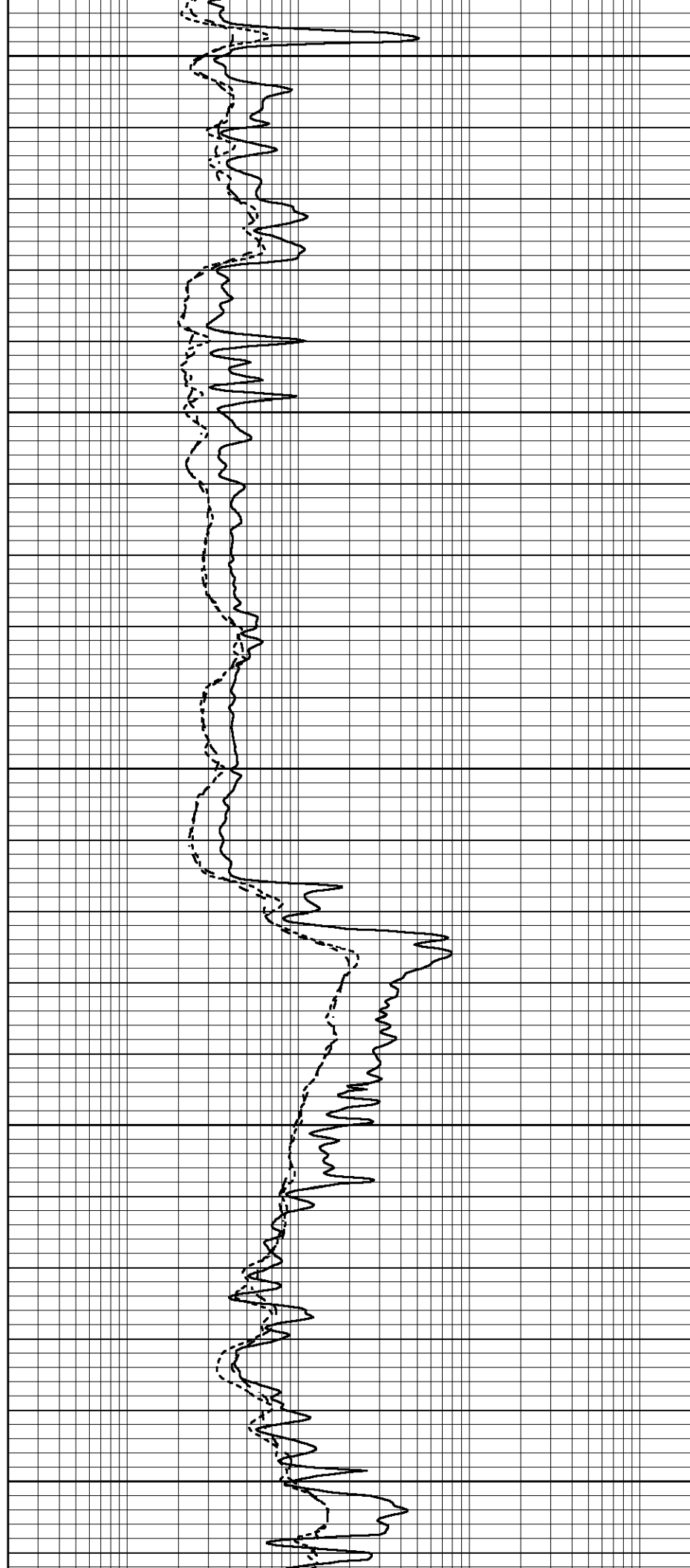
4500

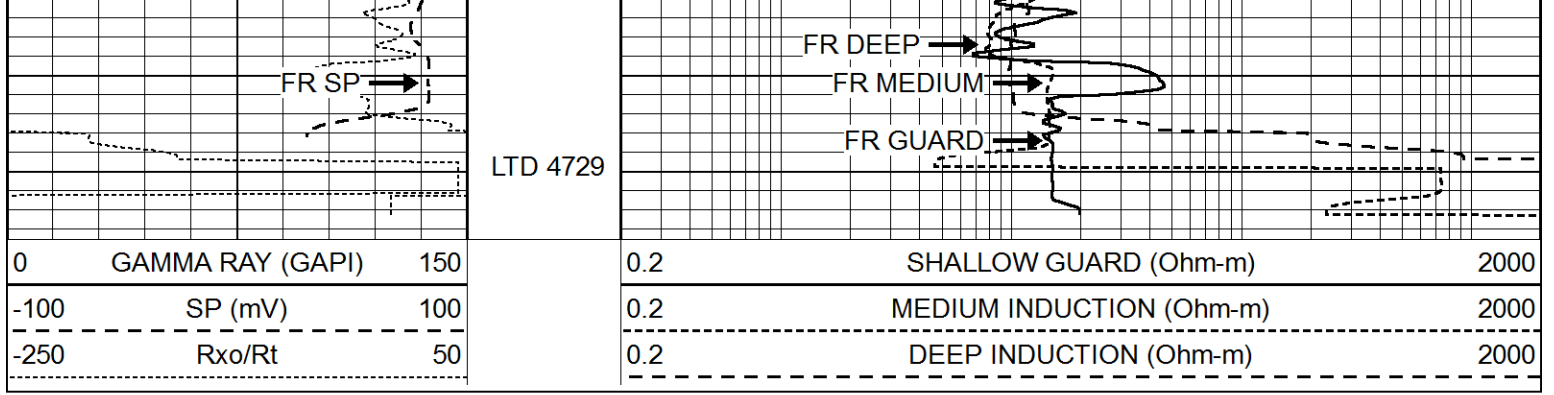
4550

4600

4650

4700





Calibration Report

Database File 9586pe.db
 Dataset Pathname pass2.M
 Dataset Creation Sat Aug 02 18:12:58 2025

Dual Induction Calibration Report

Serial-Model: FW1410-56-Probe
 Surface Cal Performed: Tue Apr 30 11:10:17 2024
 Downhole Cal Performed: Tue Jul 25 12:15:37 2017
 After Survey Verification Performed: Tue Jul 25 12:15:38 2017

Surface Calibration

Loop:	Readings			References			Results	
	Air	Loop		Air	Loop		m	b
Deep	0.008	0.765	V	1.000	400.000	mmho/m	520.000	16.000
Medium	-0.056	0.761	V	1.000	464.000	mmho/m	540.000	195.000
Internal:	Zero	Cal		Zero	Cal		m	b
Deep	0.005	0.624	V	0.000	400.000	mmho/m	645.611	-3.034
Medium	0.012	0.721	V	0.000	464.000	mmho/m	653.591	-7.532

Downhole Calibration

	Readings			References			Results	
	Zero	Cal		Zero	Cal		m'	b'
Deep	-0.647	301.329	mmho/m	-0.780	336.378	mmho/m	1.117	-0.058
Medium	38.256	411.013	mmho/m	39.046	441.706	mmho/m	1.080	-2.280
LL3		7.471	V		2500.000	Ohm-m		
		0.001	V		20.000	Ohm-m		
		-7.085	V		4000.000	mmho-m		

After Survey Verification

	Readings			Targets			Results	
	Zero	Cal		Zero	Cal		m'	b'
Deep	0.000	0.000	mmho/m	-0.647	301.329	mmho/m	1.000	0.000
Medium	0.000	0.000	mmho/m	38.256	411.013	mmho/m	1.000	0.000
LL3		0.000	Ohm-m		1500.000	Ohm-m		
		0.000	Ohm-m		20.000	Ohm-m		
		0.000	mmho-m		3745.000	mmho-m		

Litho Density Calibration Report

Serial: 003 Model: PRB

Master Calibration

Performed Fri Aug 01 11:20:40 2025

Background Magnesium Aluminum Aluminum+Fe

Window 1	1424.0	7274.5	2614.8	2400.8	cps
Window 2	1319.8	6538.4	2382.0	2203.6	cps
Window 3	1217.6	5121.1	2012.2	1909.9	cps
Window 4	332.0	333.7	334.9	328.8	cps
Long Space	0.0	5218.6	1062.2	883.8	cps
Short Space	1.8	2242.5	1399.2	1191.8	cps
Rho		1.7100	2.5900	0.0000	g/cc
Pe		2.0000	2.7500	5.7900	

Rib Angle	: 43.5	Rib Slope	: 0.949	Density/Spine Ratio	: 0.530
Spine Angle	: 73.5	Spine Slope	: 3.375	Spine Intercept	: -17.5

Before Survey Verification

Performed Wed Dec 31 18:00:00 1969

Window 1	0.0	0.0	0.0	0.0	cps
Window 2	0.0	0.0	0.0	0.0	cps
Window 3	0.0	0.0	0.0	0.0	cps
Window 4	0.0	0.0	0.0	0.0	cps
Long Space	0.0	0.0	0.0	0.0	cps
Short Space	0.0	0.0	0.0	0.0	cps
Measured Rho		0.0000	0.0000	0.0000	g/cc
Measured Correction		0.0000	0.0000	0.0000	g/cc
Measured Pe			0.0000	0.0000	

After Survey Verification

Performed Wed Dec 31 18:00:00 1969

Window 1	0.0	0.0	0.0	0.0	cps
Window 2	0.0	0.0	0.0	0.0	cps
Window 3	0.0	0.0	0.0	0.0	cps
Window 4	0.0	0.0	0.0	0.0	cps
Long Space	0.0	0.0	0.0	0.0	cps
Short Space	0.0	0.0	0.0	0.0	cps
Measured Rho		0.0000	0.0000	0.0000	g/cc
Measured Correction		0.0000	0.0000	0.0000	g/cc
Measured Pe			0.0000	0.0000	

Compensated Neutron Calibration Report

Serial Number: 080621PMC
Tool Model: NABORS

PRE-SURVEY VERIFICATION

Detector	Readings	Measured	Target
Short Space	cps		
Long Space	cps	pu	pu

POST-SURVEY VERIFICATION

Detector	Readings	Measured	Target
Short Space	cps		
Long Space	cps	pu	pu

Gamma Ray Calibration Report

Serial Number: 46001
Tool Model: Probe1
Performed: Thu Apr 20 09:55:57 2023

Calibrator Value:	1.0	GAPI
Background Reading:	0.0	cps
Calibrator Reading:	1.0	cps
Sensitivity:	0.4300	GAPI/cps