

MICRO LOG



Company UNION VALLEY PETROLEUM CORP.

Well RUTH ANN #1-6

Field UNNAMED

County SUMNER State KANSAS

Location: API #: 15-191-22867-0000

1490 FNL & 1375 FEL
NE - NE - SW - NE

SEC 6 TWP 35S RGE 4W

Permanent Datum GROUND LEVEL Elevation 1229
Log Measured From KELLY BUSHING 13' A.G.L.
Drilling Measured From KELLY BUSHING

Other Services
CDL/CNL/PE
DIL/SON
Elevation

K.B: 1242
D.F: 1240
G.L: 1229

Date	8/2/25		
Run Number	ONE		
Depth Driller	4730		
Depth Logger	4729		
Bottom Logged Interval	4713		
Top Log Interval	3000		
Casing Driller	8.625 @ 395		
Casing Logger	395		
Bit Size	7.875		
Type Fluid in Hole	CHEMICAL MUD	CHLORIDES 7.000 PPM	
Density / Viscosity	9.4/40		
pH / Fluid Loss	10.5/8.4		
Source of Sample	FLOWLINE		
Rm @ Meas. Temp	.650 @ 101F		
Rmf @ Meas. Temp	.488 @ 101F		
Rmc @ Meas. Temp	.780 @ 101F		
Source of Rmf / Rmc	MEASUREMENT		
Rm @ BHT	.534 @ 123F		
Time Circulation Stopped	4 HOURS		
Time Logger on Bottom	5:30 PM		
Maximum Recorded Temperature	123F		
Equipment Number	3802		
Location	HAYS, KANSAS		
Recorded By	COLE ROBBEN	TJ DREILING	
Witnessed By	CHUCK ZORIO		

<<< Fold Here >>>

All interpretations are opinions based on inferences from electrical or other measurements and we cannot and do not guarantee the accuracy or correctness of any interpretation, and we shall not, except in the case of gross or willful negligence on our part, be liable or responsible for any loss, costs, damages, or expenses incurred or sustained by anyone resulting from any interpretation made by any of our officers, agents or employees. These interpretations are also subject to our general terms and conditions set out in our current Price Schedule.

Comments

THANK YOU FOR USING ELI WIRELINE SERVICES, HAYS, KS. (785) 628-6395

DIRECTIONS:

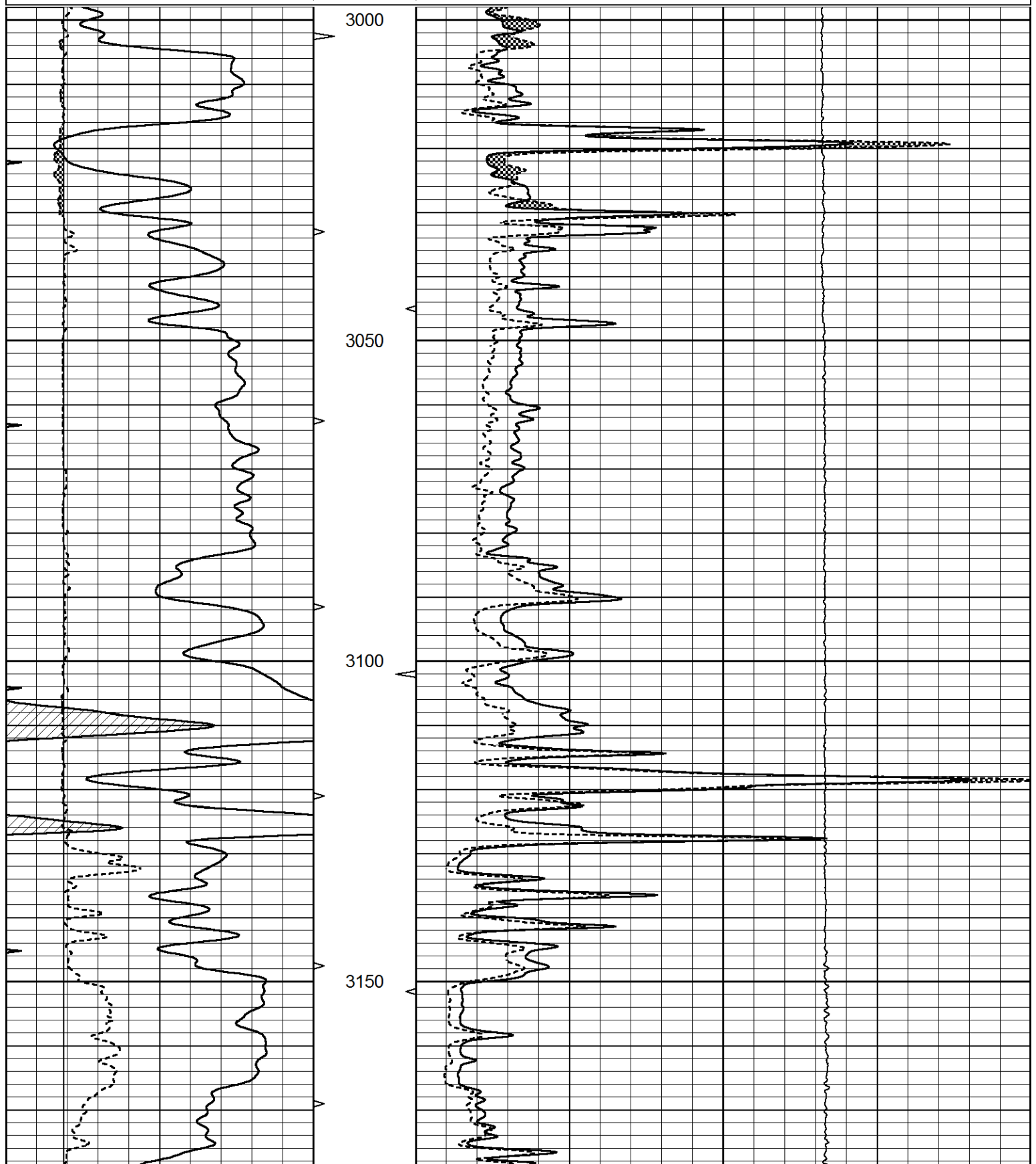
FROM BLUFF CITY, KANSAS - 1.5 MILES SOUTH TO SE 70 ROAD, 5 MILES EAST TO S. FALLS ROAD, 1 MILE SOUTH, SOUTH INTO THROUGH GATE

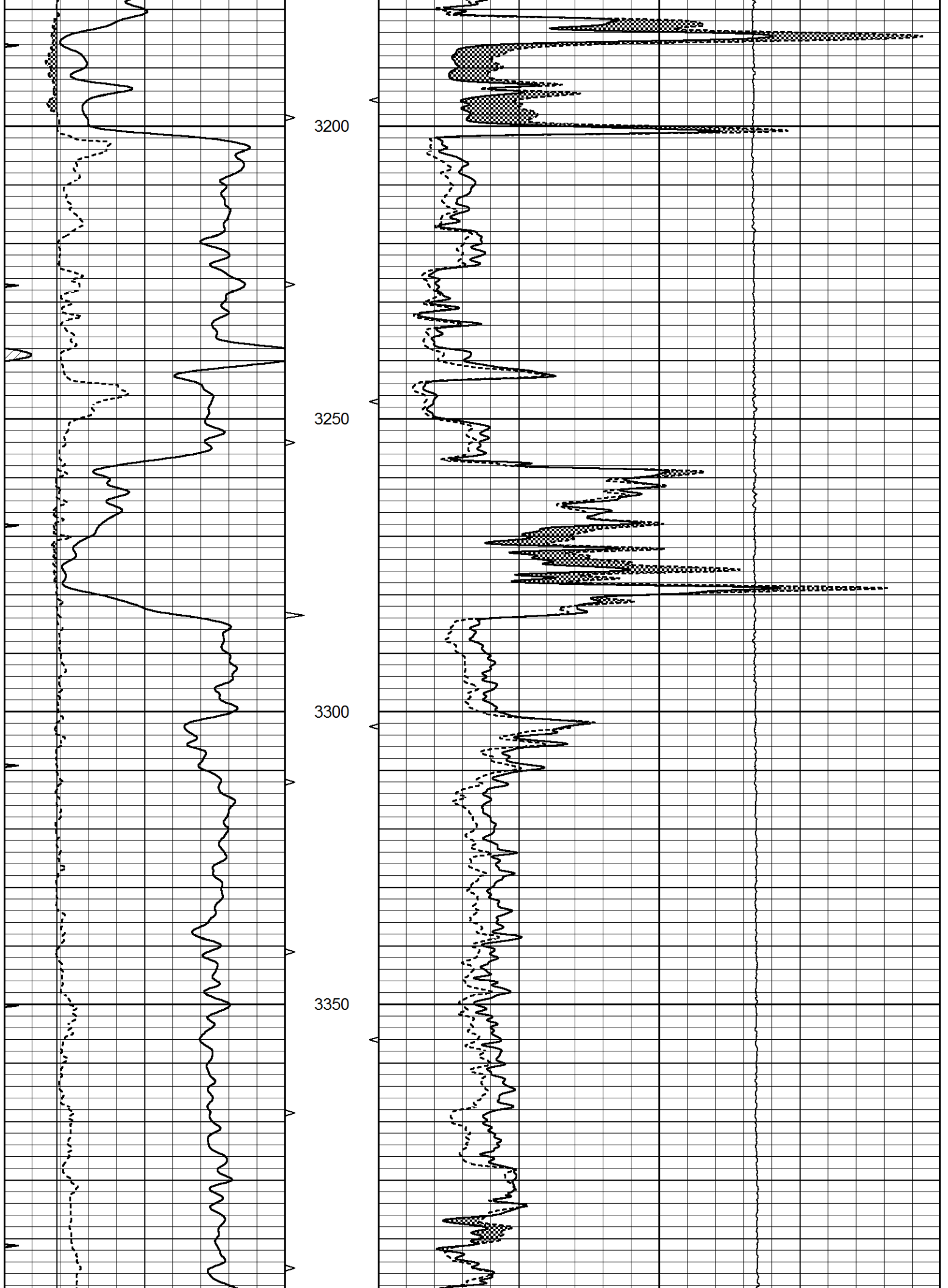


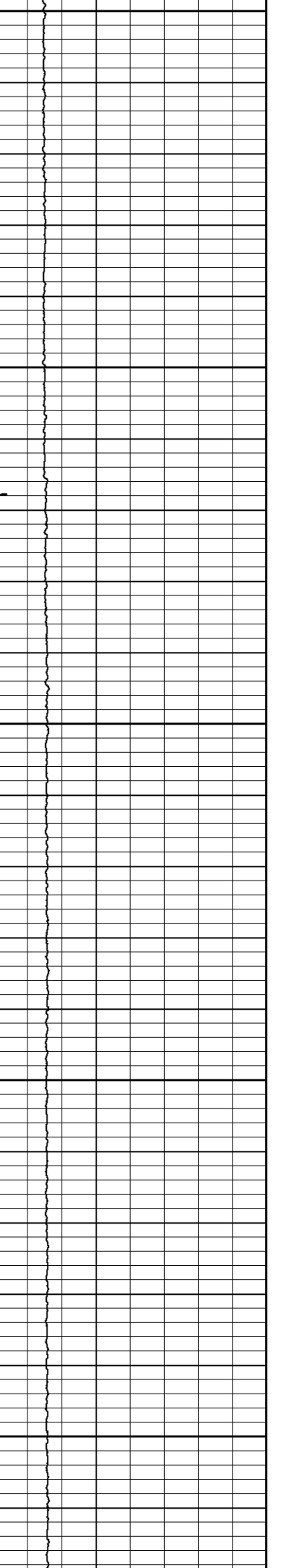
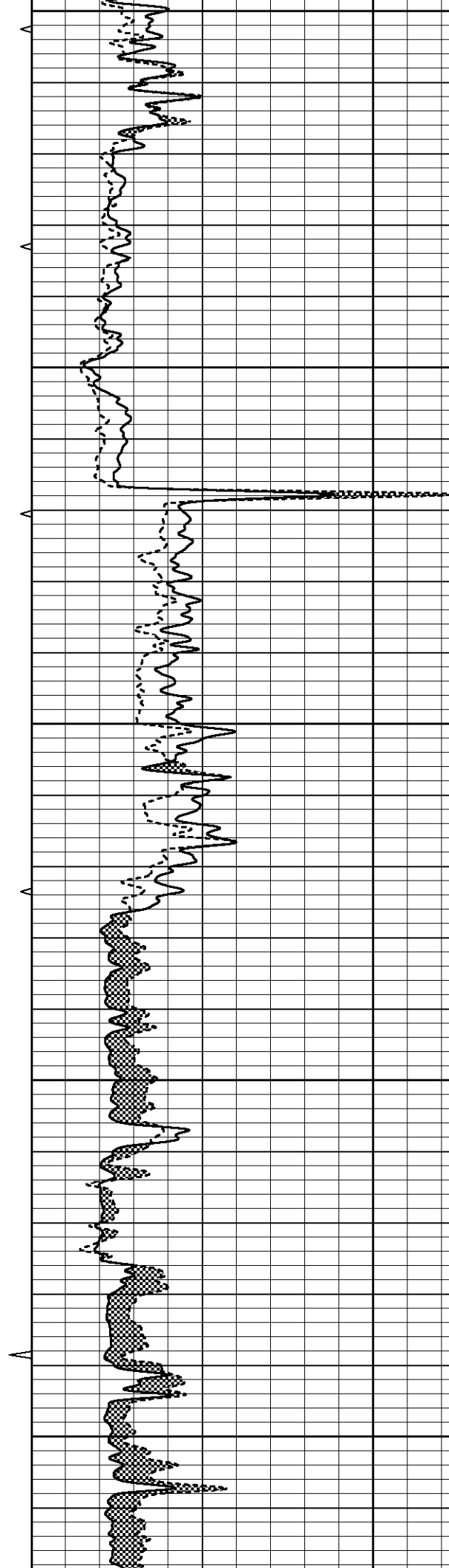
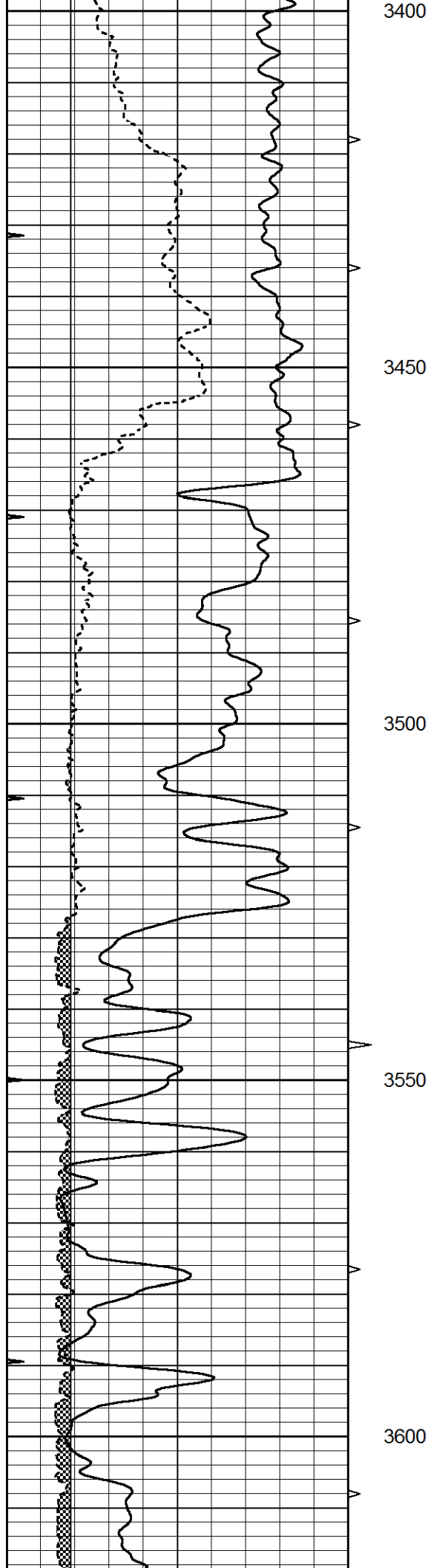
MAIN SECTION

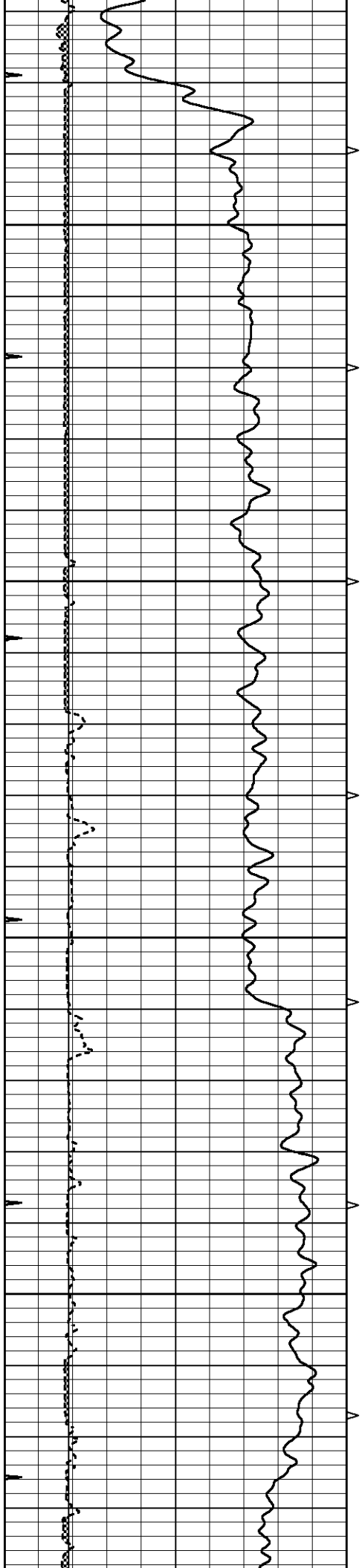
Database File 9586pe.db
 Dataset Pathname pass3.D
 Presentation Format _micro
 Dataset Creation Sat Aug 02 18:54:50 2025
 Charted by Depth in Feet scaled 1:240

0	GAMMA RAY (GAPI)	150	ABHV	0	MEL1.5 (Ohm-m)	40
6	CALIPER (in)	16	10 (ft3)	0	MEL2.0 (Ohm-m)	40
0	MINMK	20	TBHV	0	LTEN (lb)	5000
			0 (ft3)	10		







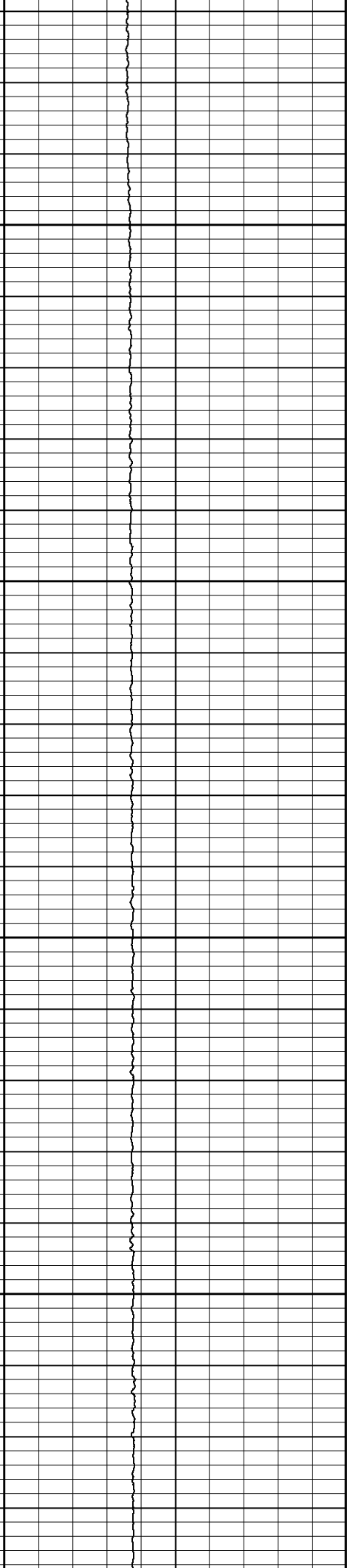
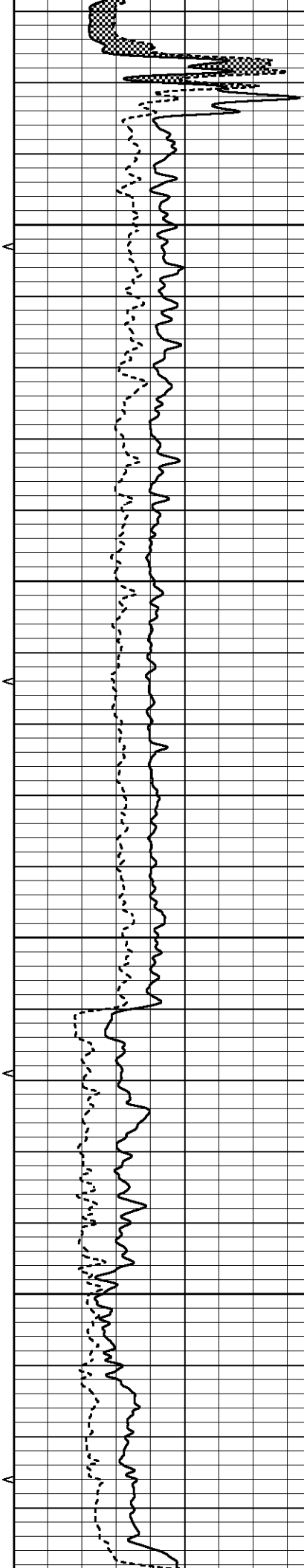


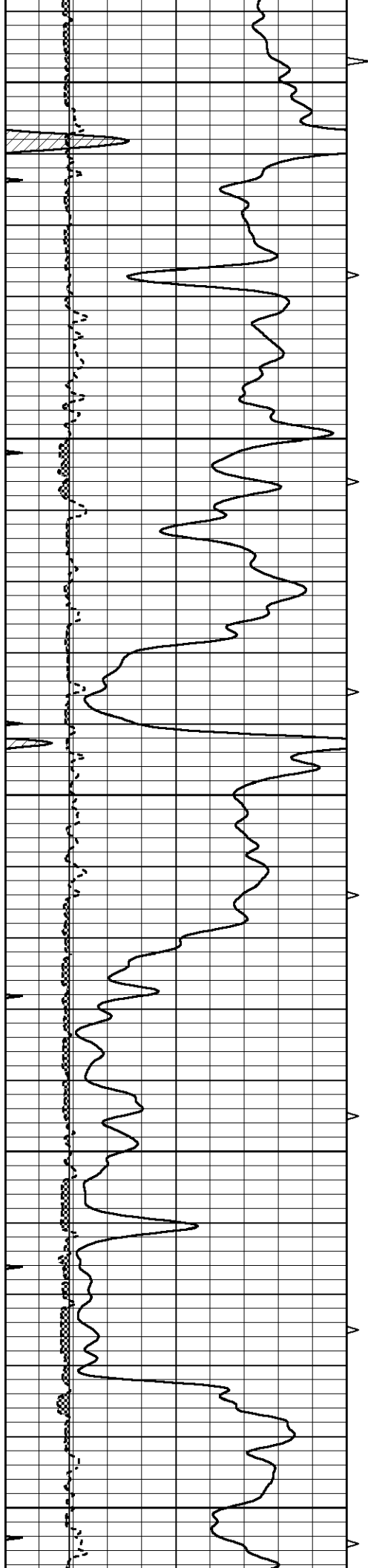
3650

3700

3750

3800





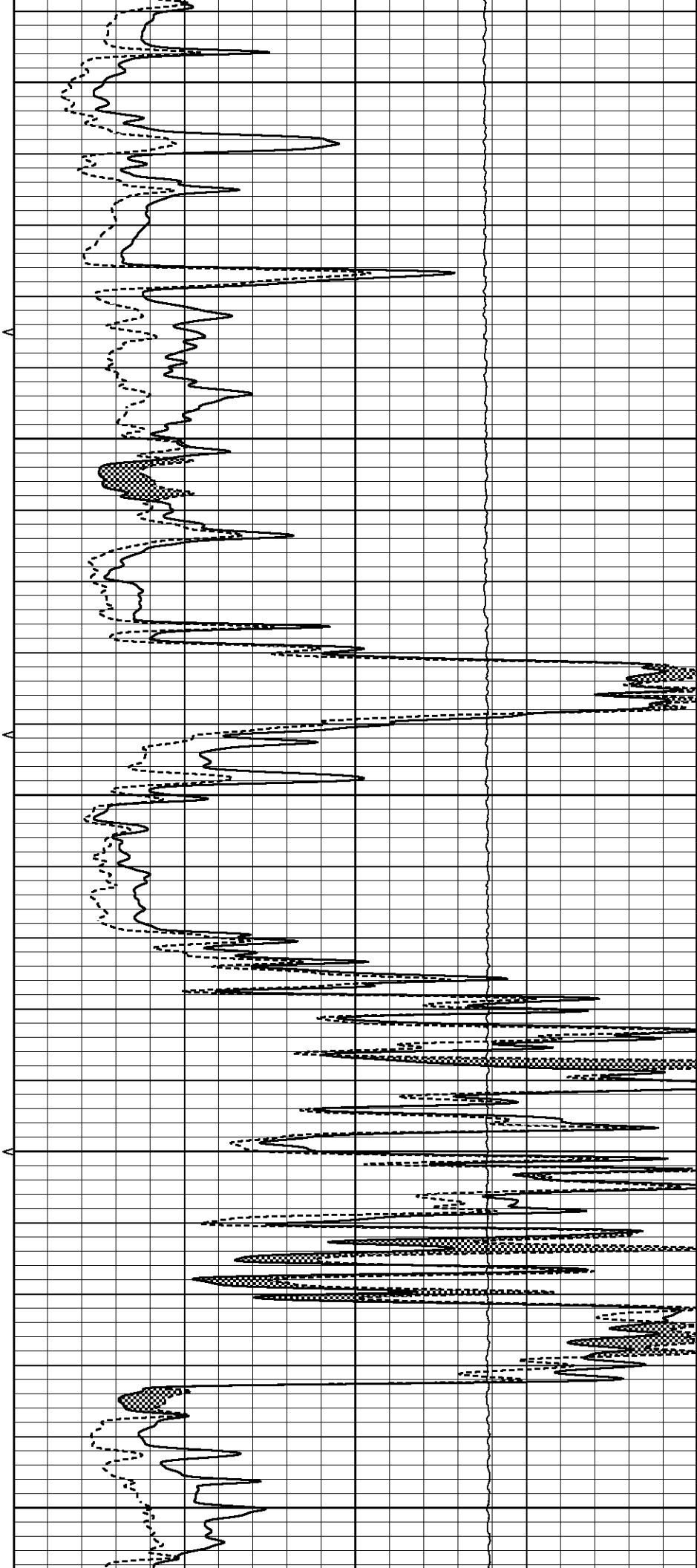
3850

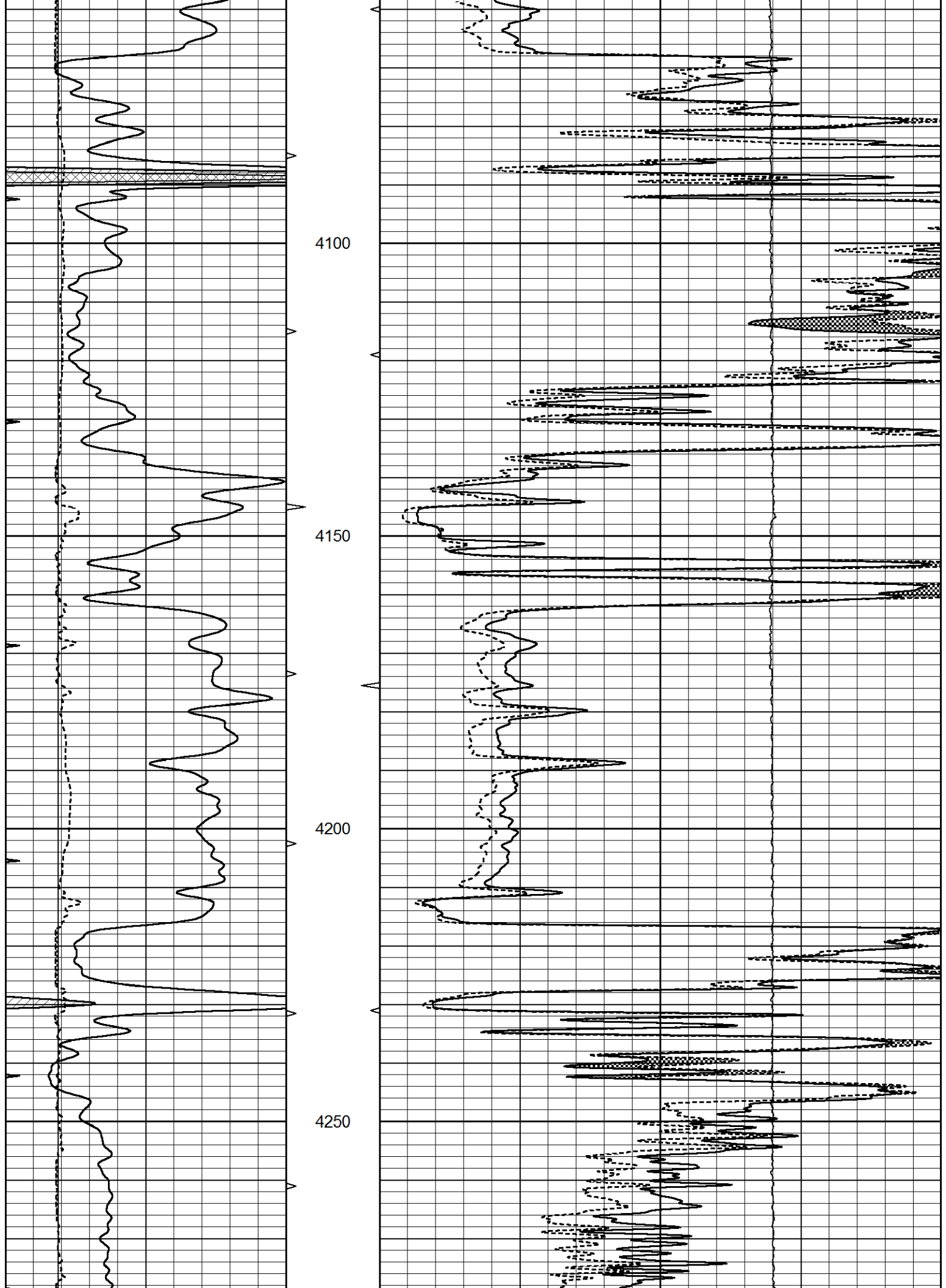
3900

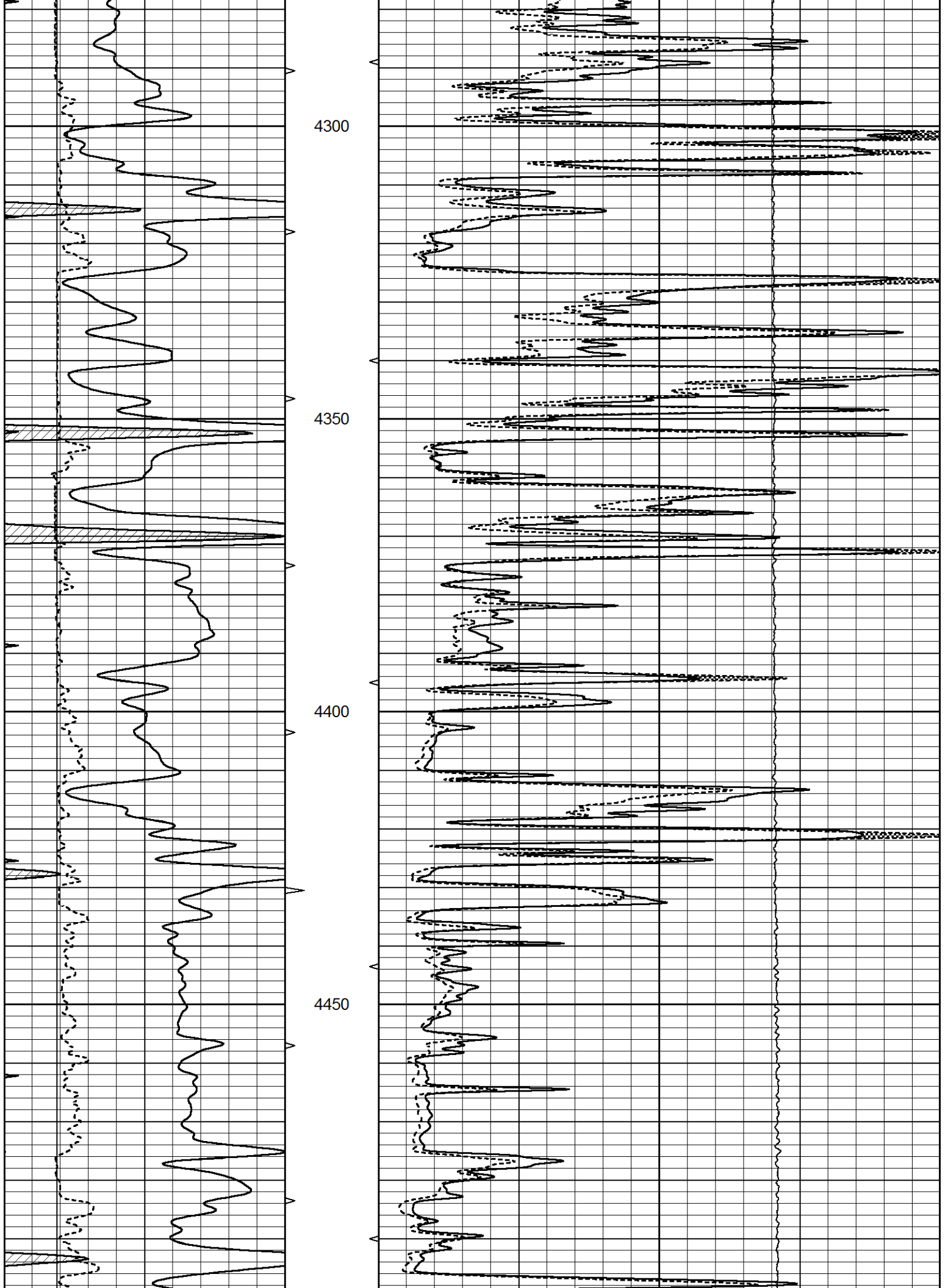
3950

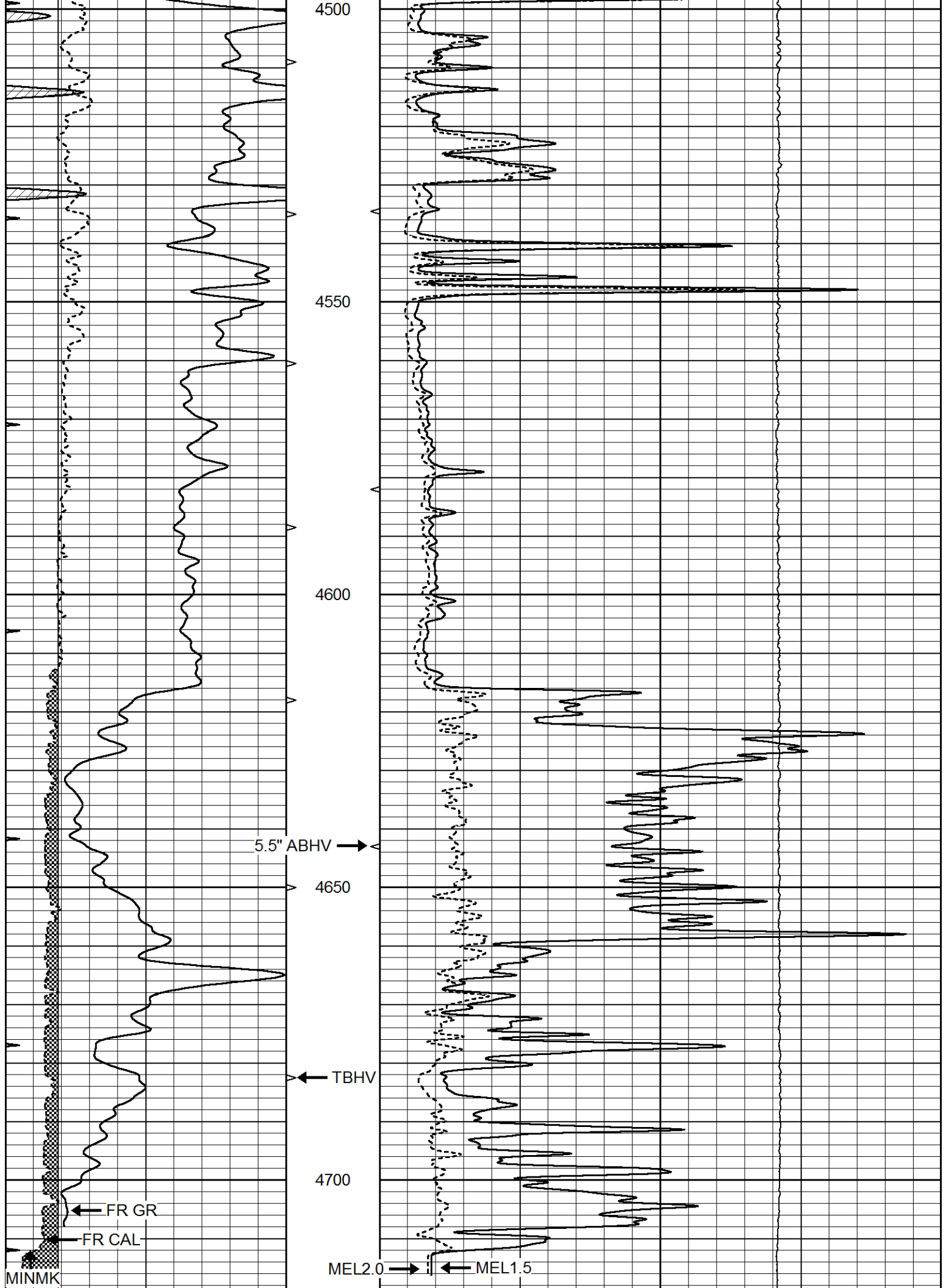
4000

4050









			LTD 4729			LTEN →		
0	GAMMA RAY (GAPI)	150	ABHV	0	MEL1.5 (Ohm-m)			40
6	CALIPER (in)	16	10 (ft3) 0	0	MEL2.0 (Ohm-m)			40
0	MINMK	20	TBHV		0	LTEN (lb)		5000
			0 (ft3) 10					

Calibration Report

Database File 9586pe.db
Dataset Pathname pass3.D
Dataset Creation Sat Aug 02 18:54:50 2025

MICRO_USR Calibration Report

Serial Number:	070911		
Tool Model:	ProbeL		
Performed:	Thu May 08 15:14:24 2025		
Caliper Calibration:	Gain=4.500	Offset=1.200	
References	Low Cal	High Cal	
Readings	8.000	14.000	
	1.427	2.836	
1.5" Calibration:	Gain=22.000	Offset=1.700	
References	Low Cal	High Cal	
Readings	0.000	20.000	
	0.006	1.242	
2" Calibration:	Gain=48.000	Offset=0.000	
References	Low Cal	High Cal	
Readings	0.000	20.000	
	0.007	0.958	

Microlog Calibration Report

Serial-Model:	070911-ProbeL								
Performed:	Sat May 14 04:48:25 2022								
	Readings				References			Results	
	Zero	Cal		Zero	Cal		m	b	
Normal	0.0002	0.4836	V	0.0000	10.0000	Ohm-m	20.6908	-0.0051	
Inverse	0.0018	0.6297	V	0.0000	10.0000	Ohm-m	15.9263	-0.0282	
Caliper	0.0000	1.0000	V	0.0000	1.0000	in	1.0000	0.0000	

Gamma Ray Calibration Report

Serial Number:	070558		
Tool Model:	Probe1		
Performed:	Wed Feb 12 21:18:24 2025		
Calibrator Value:	1.0	GAPI	
Background Reading:	0.0	cps	
Calibrator Reading:	1.0	cps	
Sensitivity:	0.5200	GAPI/cps	