



DUAL INDUCTION

MIDWEST WIRELINE

Company Griffin Management, LLC
 Well Jenna #1
 Field Turkey Creek East
 County Barber State Kansas

Location: API #: 15-007-24513-00-00
 E2 NW SW SE
 990 FSL & 2300 FEL
 SEC 16 TWP 30S RGE 15W
 Permanent Datum Ground Level Elevation 1875
 Log Measured From Kelly Bushing
 Drilling Measured From Kelly Bushing
 Other Services
 CNL/CDL
 MEL
 Elevation
 K.B. 1880
 D.F.
 G.L. 1875

Date	8/25/2025
Run Number	One
Depth Driller	4864
Depth Logger	4866
Bottom Logged Interval	4865
Top Log Interval	1000
Casing Driller	8,625 @ 1018
Casing Logger	1016
Bit Size	7.875
Type Fluid in Hole	Chemical
Salinity, ppm CL	6000
Density / Viscosity	9.4 48
pH / Fluid Loss	9.5 10.2
Source of Sample	Flowline
Rm @ Meas. Temp	1.20 @ 76
Rmt @ Meas. Temp	0.90 @ 76
Rmc @ Meas. Temp	1.62 @ 76
Source of Rmf / Rmc	Charts
Rm @ BHT	0.73 @ 125
Operating Rig Time	3 Hrs
Max Rec. Temp. F	125
Equipment Number	24
Location	Hays, KS
Recorded By	M. Hiss / T. Martin
Witnessed By	Eli Felts

<<< Fold Here >>>

All interpretations are opinions based on inferences from electrical or other measurements and Midwest Wireline LLC cannot and does not guarantee the accuracy or correctness of any interpretation, and Midwest Wireline LLC will not be liable or responsible for any loss, costs, damages, or expenses incurred or sustained by anyone resulting from any interpretation made by any of our officers, agents or employees.

Comments

N/A DENOTES NOT AVAILABLE OR NON-APPLICABLE.

Coats KS, South to 110 rd, 1 East, South Into.

Log Measured From: Kelly Bushing 5 Ft. Above Permanent Datum

THANK YOU FOR USING MIDWEST WIRELINE LLC
 785-625-3858

Your Midwest Wireline Crew

Engineer: M. Hiss / T. Martin
 Operator:
 Operator:
 Operator:

This Log Record Was Witnessed By

Primary Witness: Eli Felts
 Secondary Witness:
 Secondary Witness:
 Secondary Witness:

Sensor	Offset (ft)	Schematic	Description	Length (ft)	O.D. (in)	Weight (lb)	
GR	40.75		GR-M&W (105)	3.00	3.50	50.00	
CNLSC CNSSC	37.65 36.90		CNT-M&W (201-M&W)	5.00	3.50	100.00	
			MWLith-STEP LITHO (704-10) Long Litho Mandrel	8.92	5.00	250.00	
LCAL	28.21						
LLW8N	28.21						
LLW7N	28.21						
LLW6N	28.21						
LLW5N	28.21						
LLW4N	28.21						
LLW3N	28.21						
LLW2N	28.21			ML-PSIML (401)	7.58	4.00	65.00
LLW1N	28.21						
LSLOCK	27.96						
LLLOCK	27.96						
PELTMPR	27.96						
LSHVNG	27.96						
LLHVNG	27.96						
LSW8N	27.71						
LSW7N	27.71						
LSW6N	27.71						
LSW5N	27.71						
LSW4N	27.71						
LSW3N	27.71						
LSW2N	27.71						
LSW1N	27.71						
MCAL	19.58		DIL-M&W (507)	18.25	3.50	220.00	
MI	19.58						
MN	19.58						
RLL3F	15.50						
RLL3	15.50						
CILD	8.33						
CILM	4.50						
SP	0.20						

Dataset: griffin_jenna_#1.db: field/well/stackml/pass3.1
 Total length: 42.75 ft
 Total weight: 685.00 lb
 O.D.: 5.00 in

Log Variables

DatabaseC:\ProgramData\Warrior\Data\griffin_jenna_#1.db
 Dataset field/well/stackml/pass3.1/_vars_

Top - Bottom

A	BOREID in	BOTTEMP degF	CASEOD in	CASETHCK in	FLUIDDEN g/cc	M	MATRXDEN g/cc
1	7.875	125	5.5	0	1	2	2.71
NPORSEL	PERFS	SNDERR mmho/m	SNDERRM mmho/m	SPSHIFT mV	SRFTEMP degF	SZCOR	TDEPTH ft
Limestone	No	2.5	-6	640	70	Off	4866

Variable Description

A : Cement Factor (a)
 BOREID : Borehole I.D.
 BOTTEMP : Bottom Hole Temperature
 CASEOD : Casing O.D.
 CASETHCK : Casing Thickness
 FLUIDDEN : Fluid Density
 M : Cement Exp (m)
 MATRXDEN : Matrix Density

NPORSEL : Neutron Porosity Curve Select
 PERFS : Perforation Flag
 SNDERR : Deep Sonde Error Correction
 SNDERRM : Medium Sonde Error Correction
 SPSHIFT : S.P. Baseline Offset
 SRFTEMP : Surface Temperature
 SZCOR : CN Size Cor. ?
 TDEPTH : Total Depth

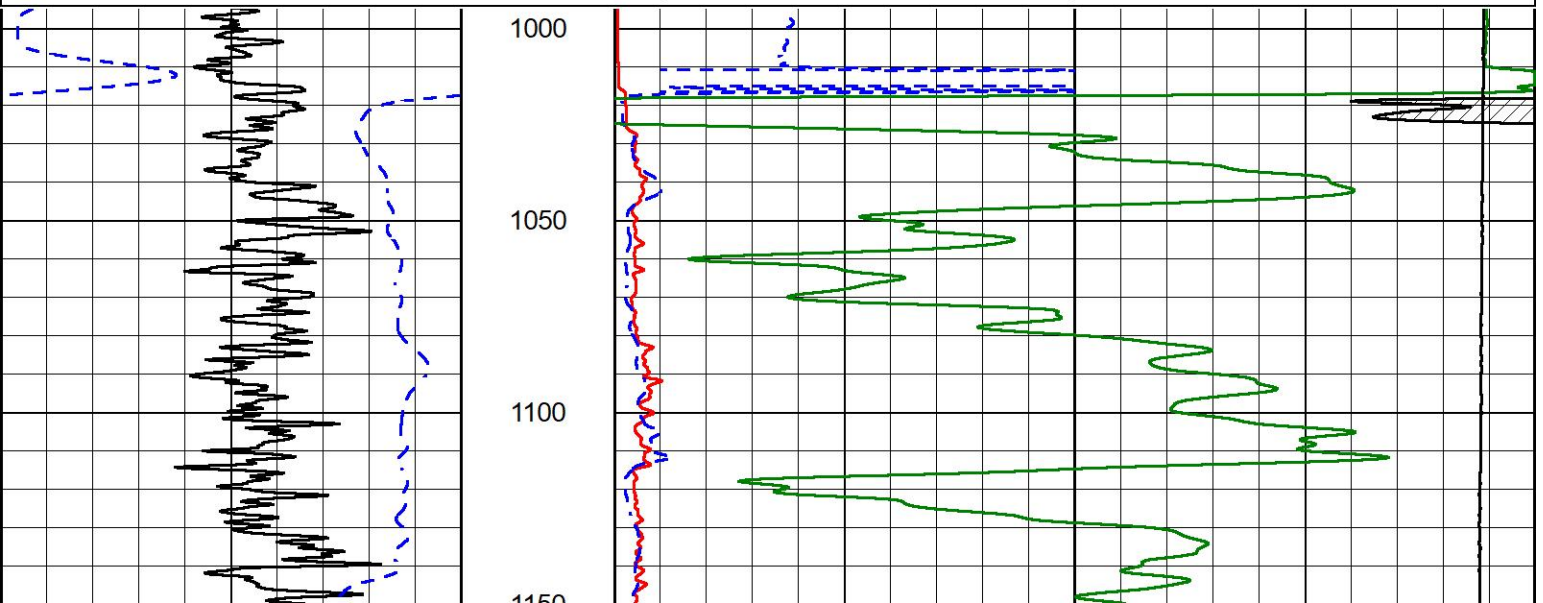


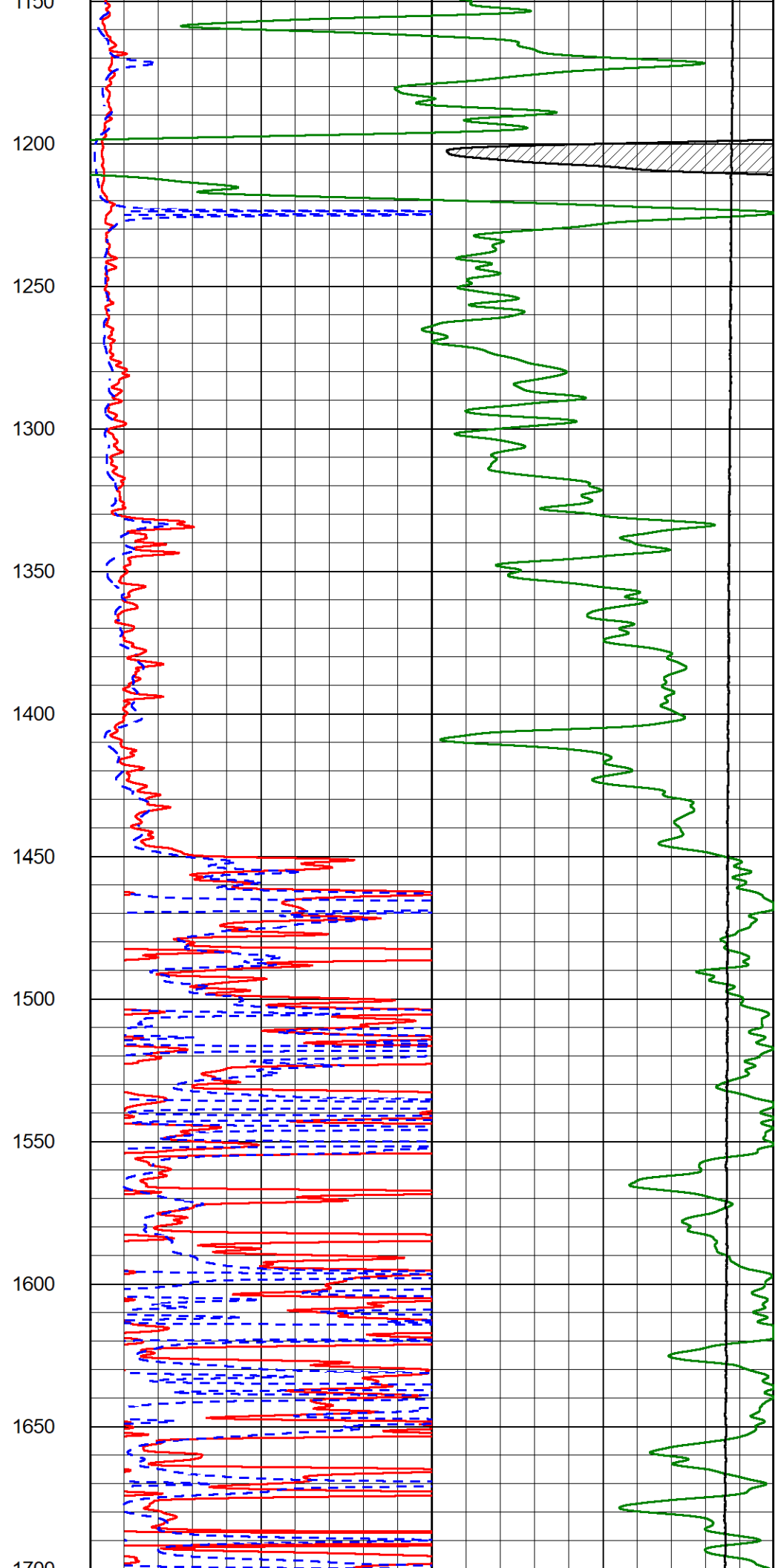
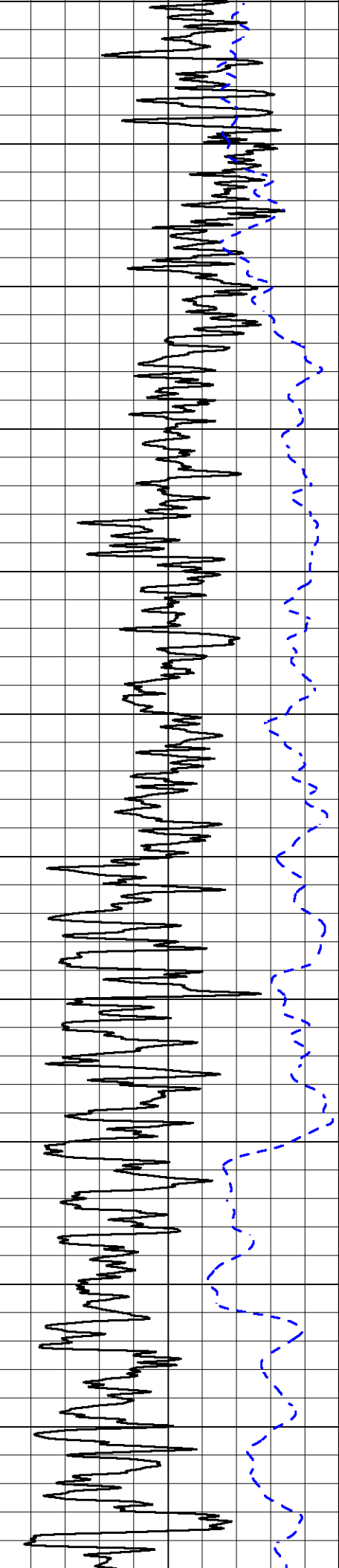
2" SCALE RESISTIVITY

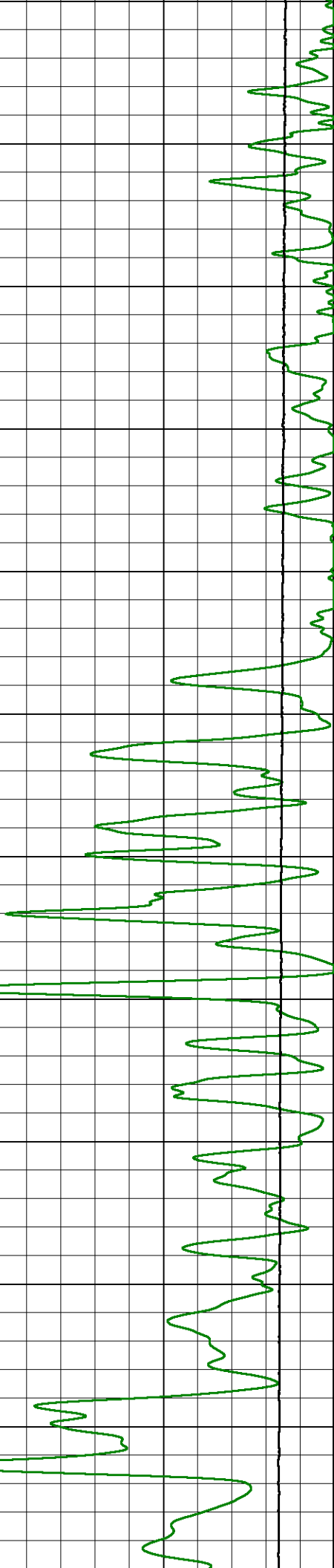
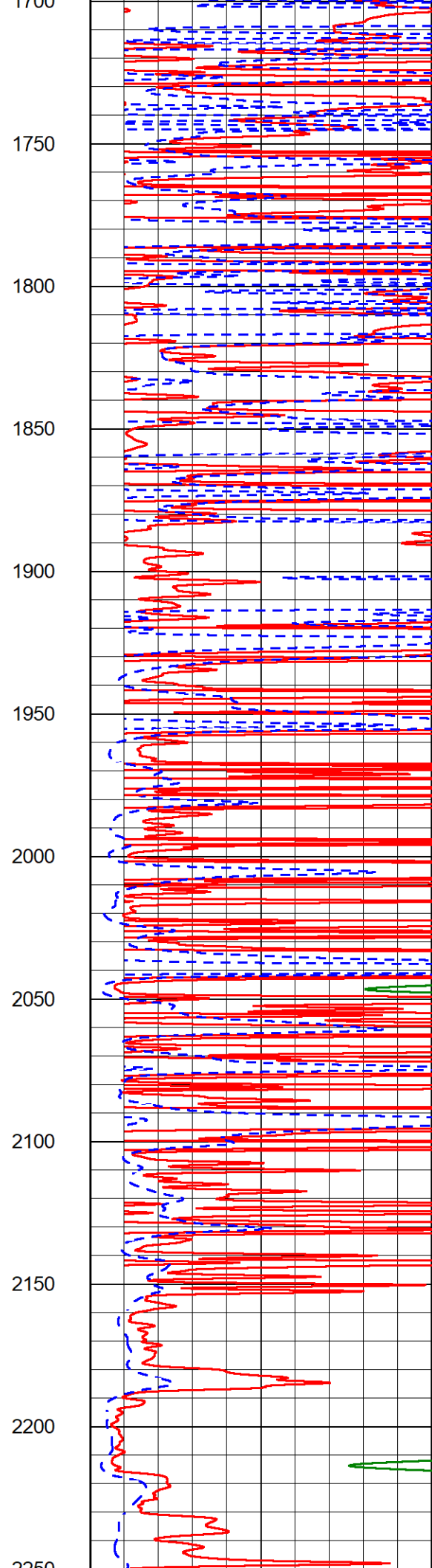
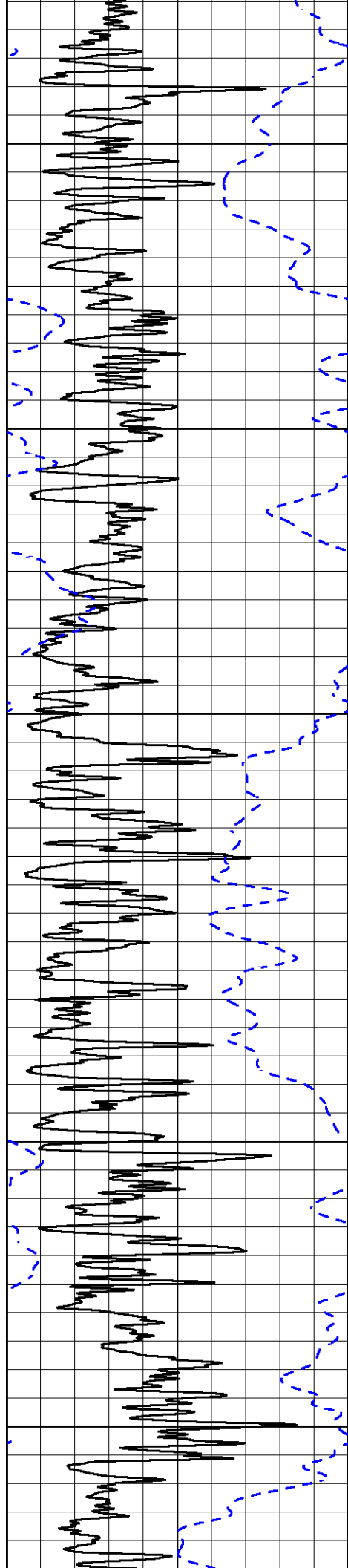
MAIN PASS

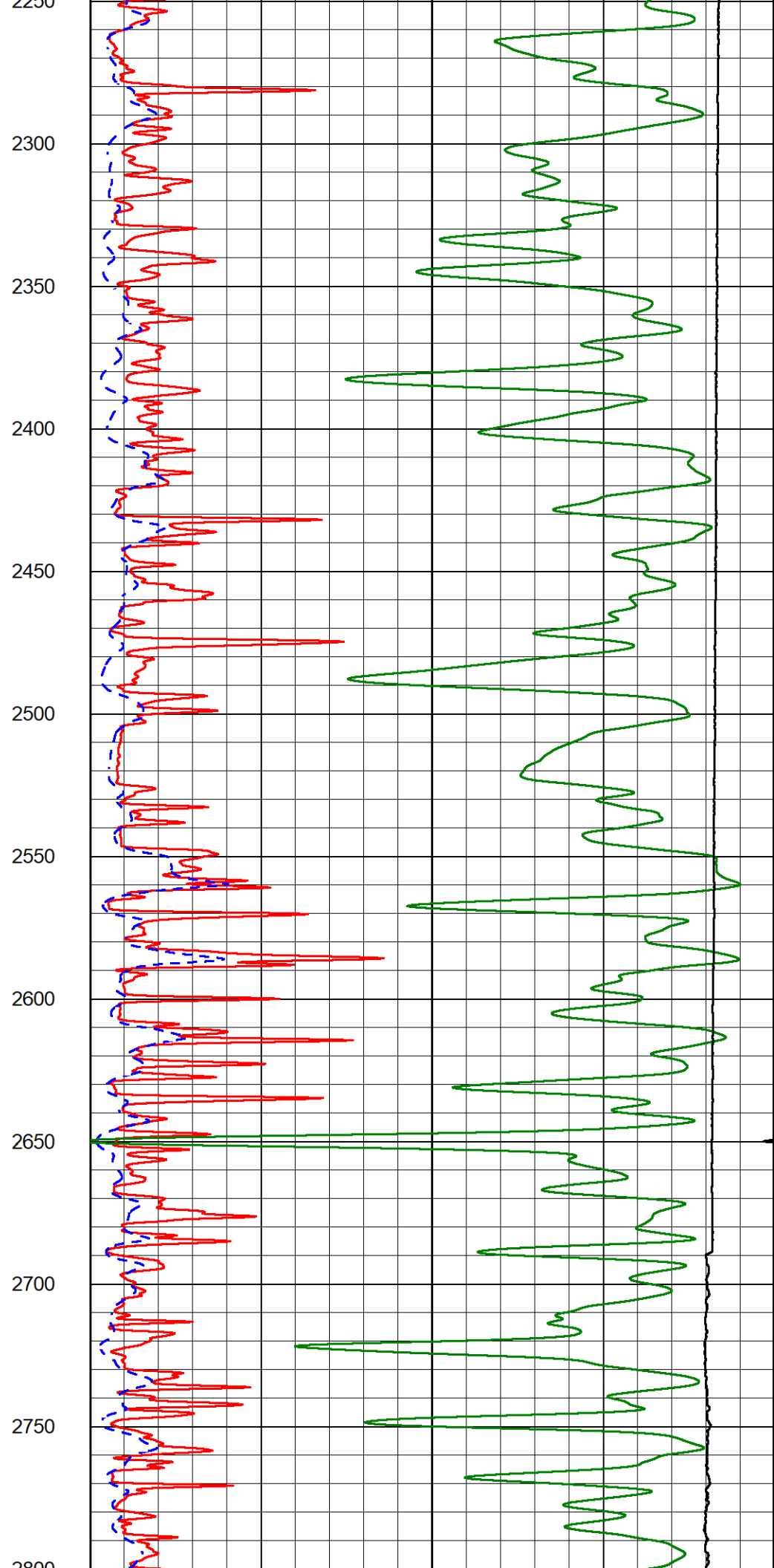
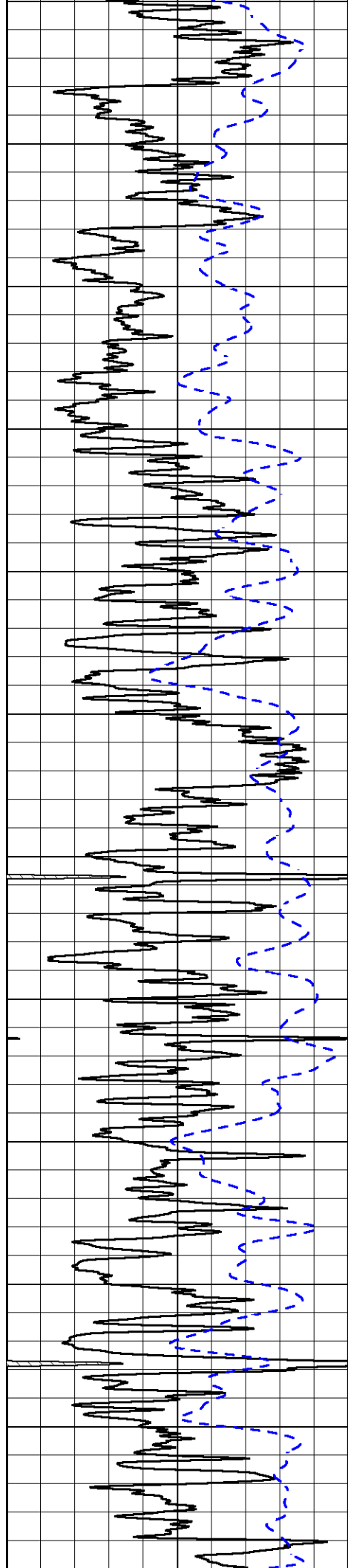
Database File griffin_jenna_#1.db
 Dataset Pathname stackml/pass3.2
 Presentation Format _dil2in
 Dataset Creation Tue Aug 26 02:26:28 2025
 Charted by Depth in Feet scaled 1:600

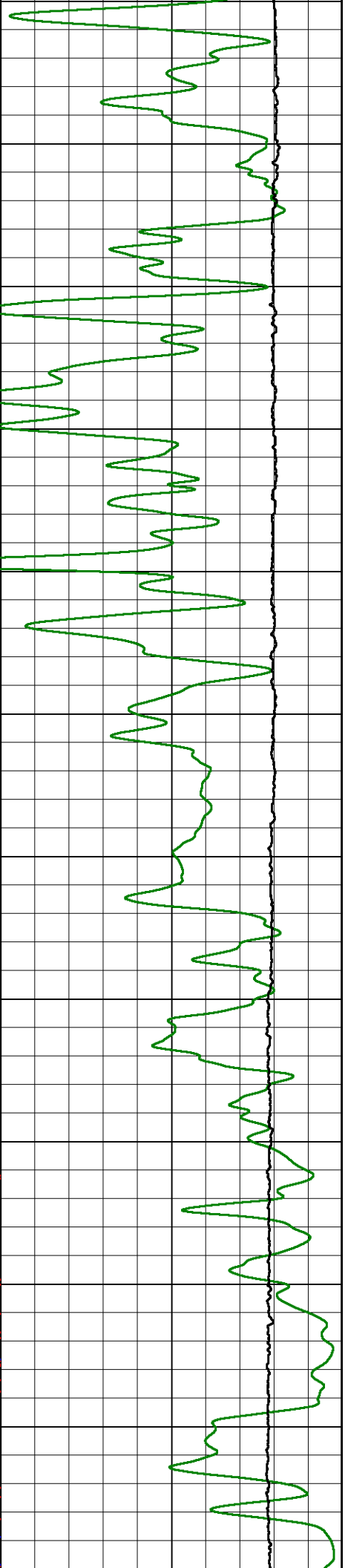
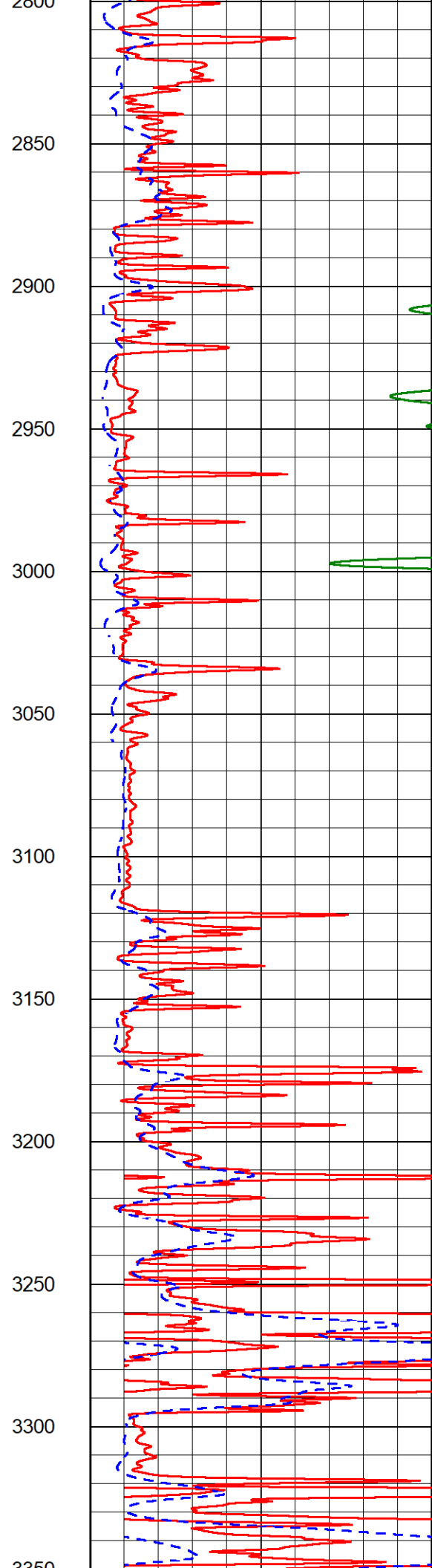
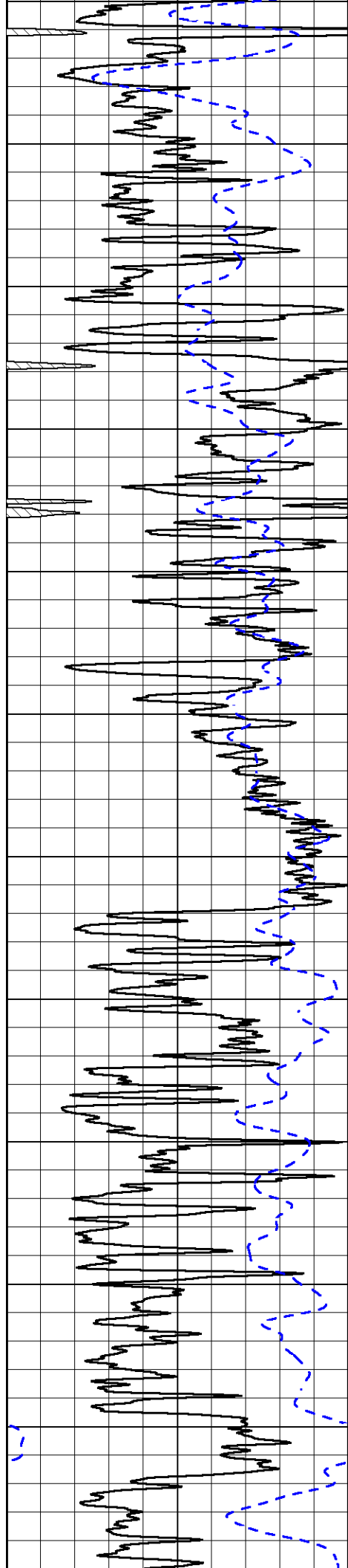
0	Gamma Ray (GAPI)	150	1000	Conductivity (mmho/m)	0
-200	SP (mV)	0	15000	Line Tension (lb)	0
			0	RLL3 (Ohm-m)	50
			0	Deep Resistivity (Ohm-m)	50
			50	RLL3 (Ohm-m)	200
			50	Deep Resistivity (Ohm-m)	200

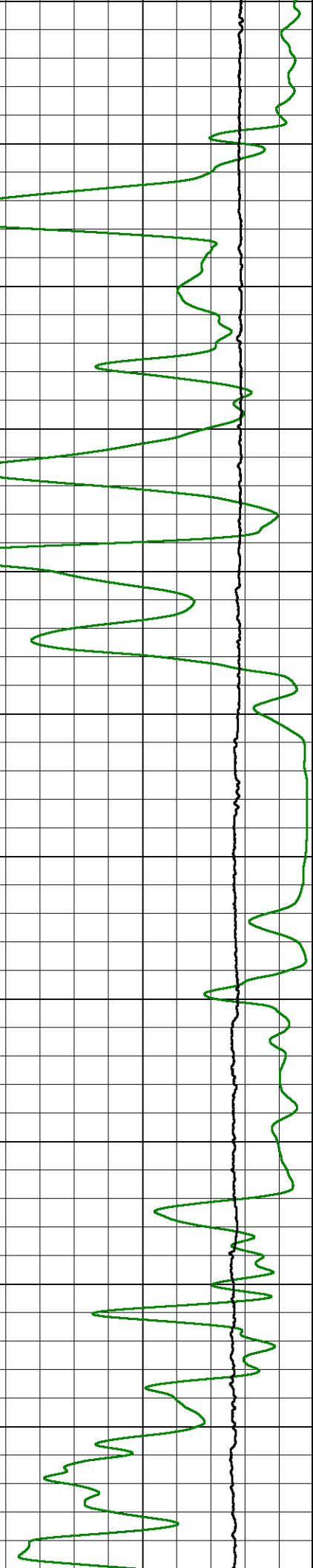
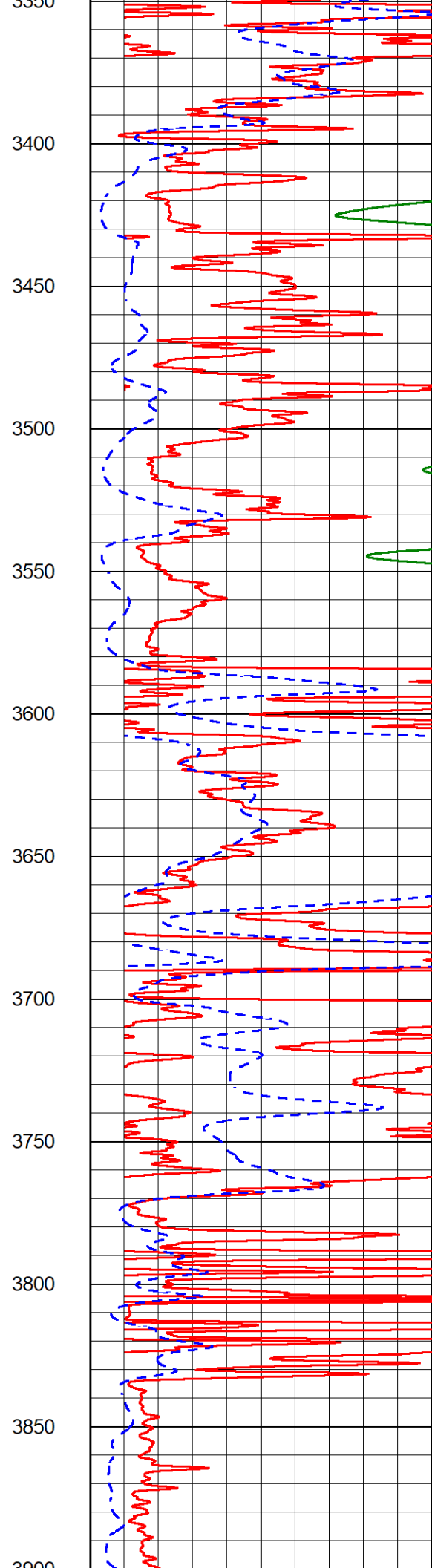
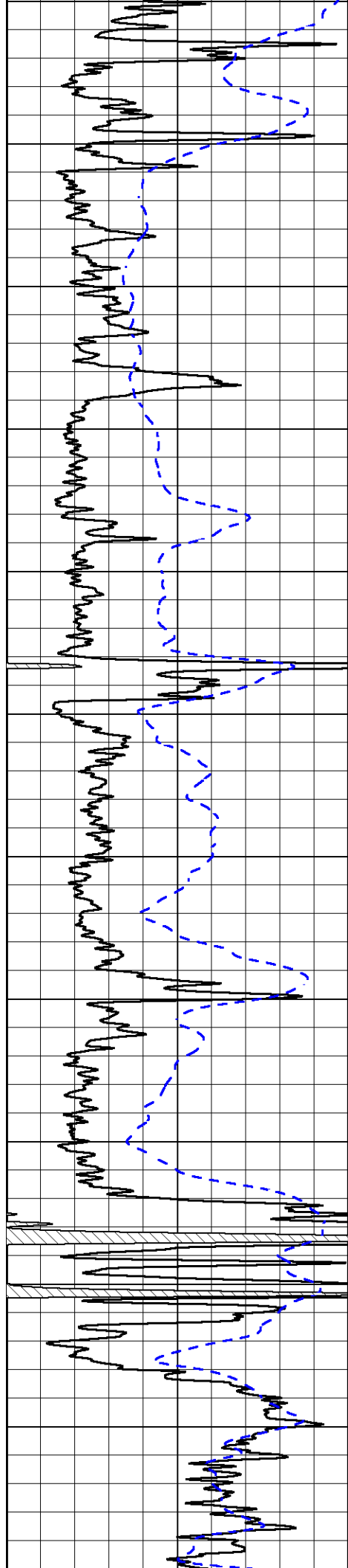


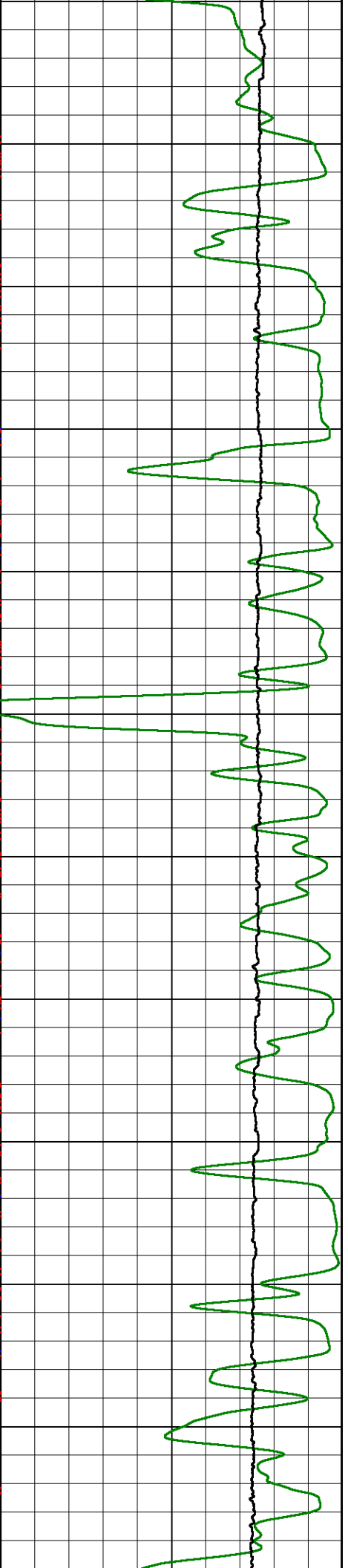
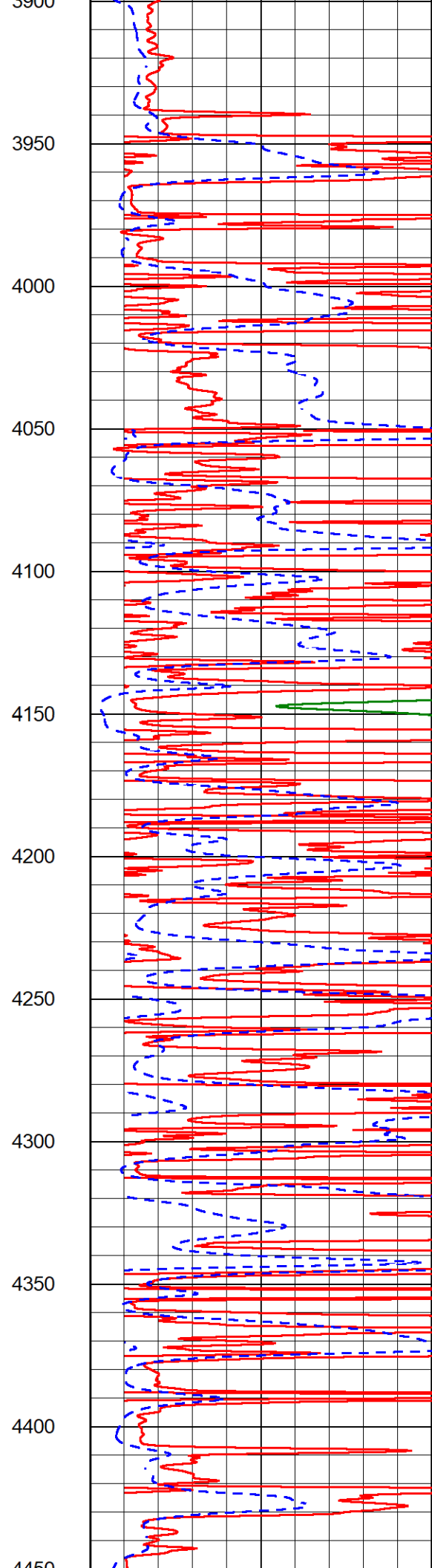
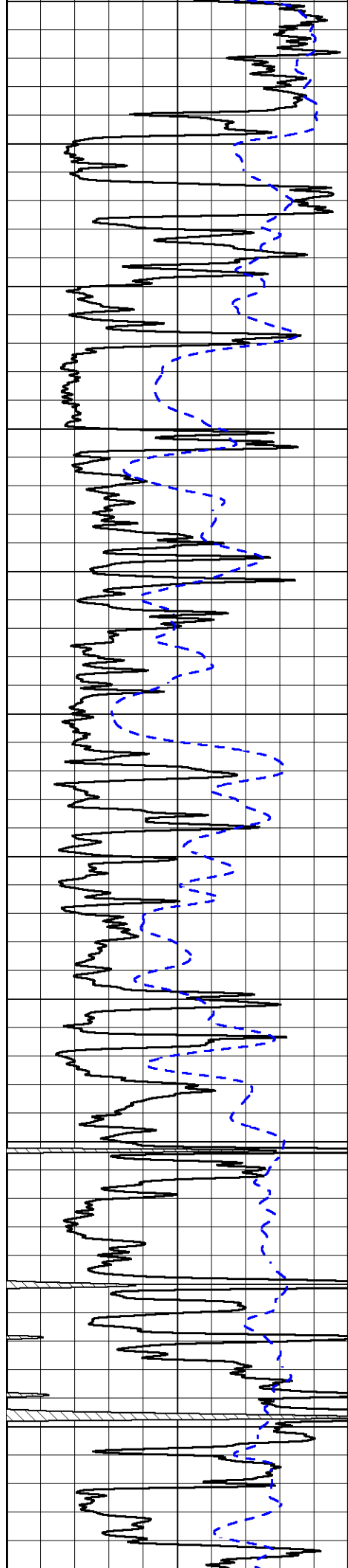


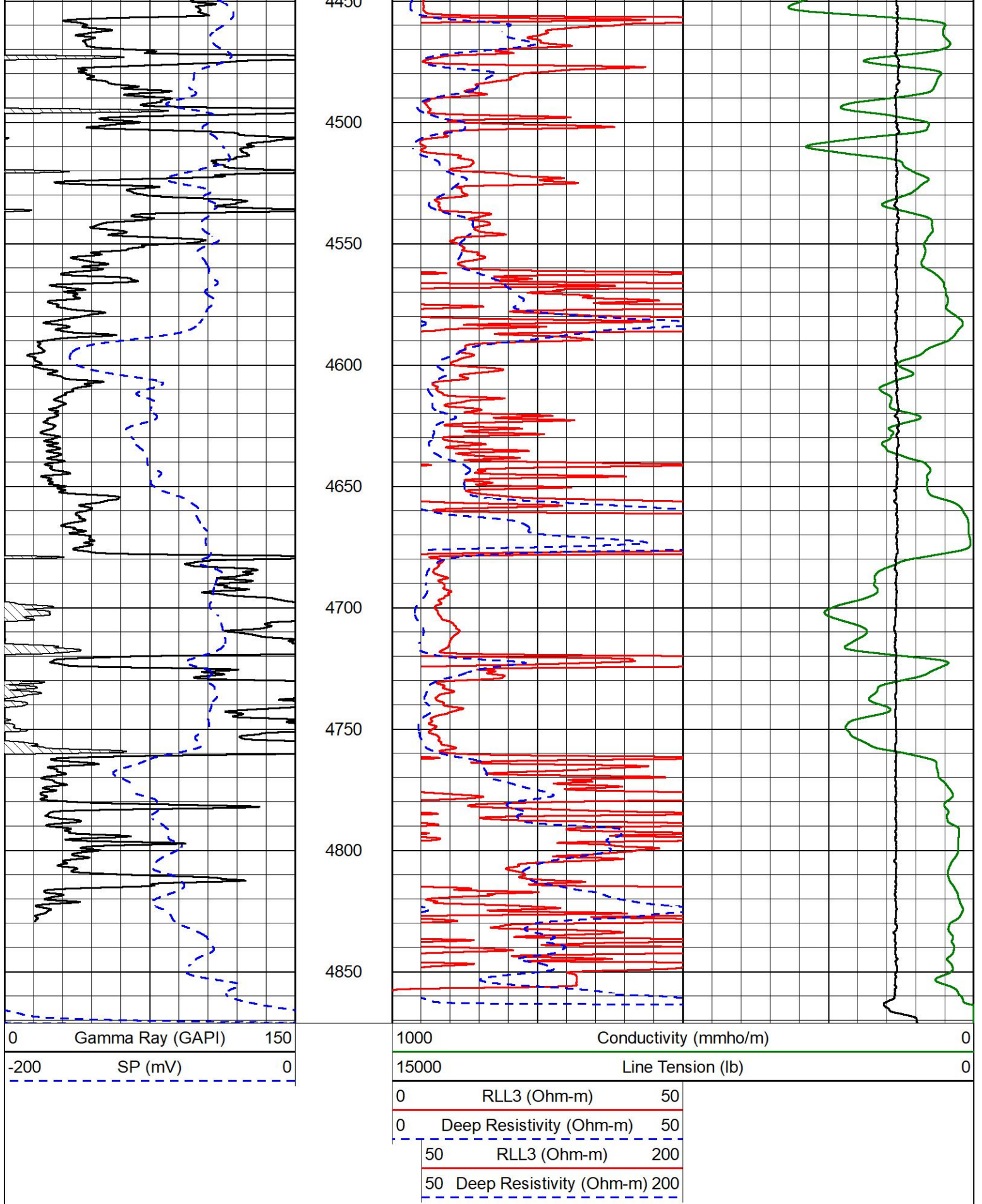












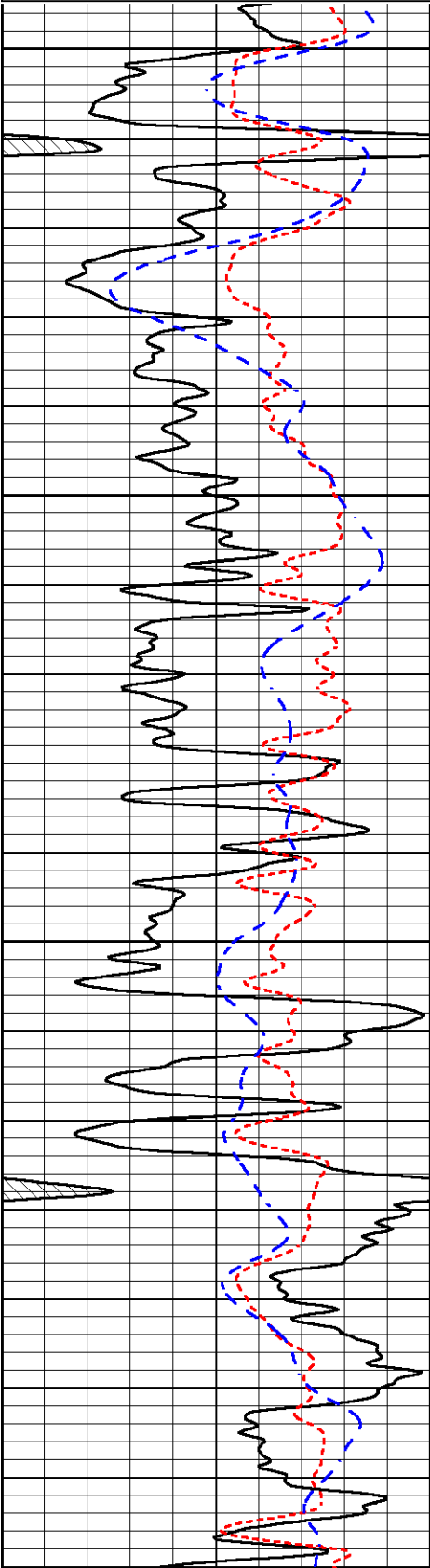
DETAIL SECTION

MAIN PASS

Database File griffin_jenna_#1.db
 Dataset Pathname stackml/pass3.1
 Presentation Format _dil
 Dataset Creation Tue Aug 26 02:26:08 2025
 Charted by Depth in Feet scaled 1:240

0	Gamma Ray (GAPI)	150
-160	RXORT	40
-200	SP (mV)	0

0.2	Deep Resistivity (Ohm-m)	2000
0.2	Medium Resistivity (Ohm-m)	2000
0.2	RLL3 (Ohm-m)	2000
10000	Line Tension (lb)	0

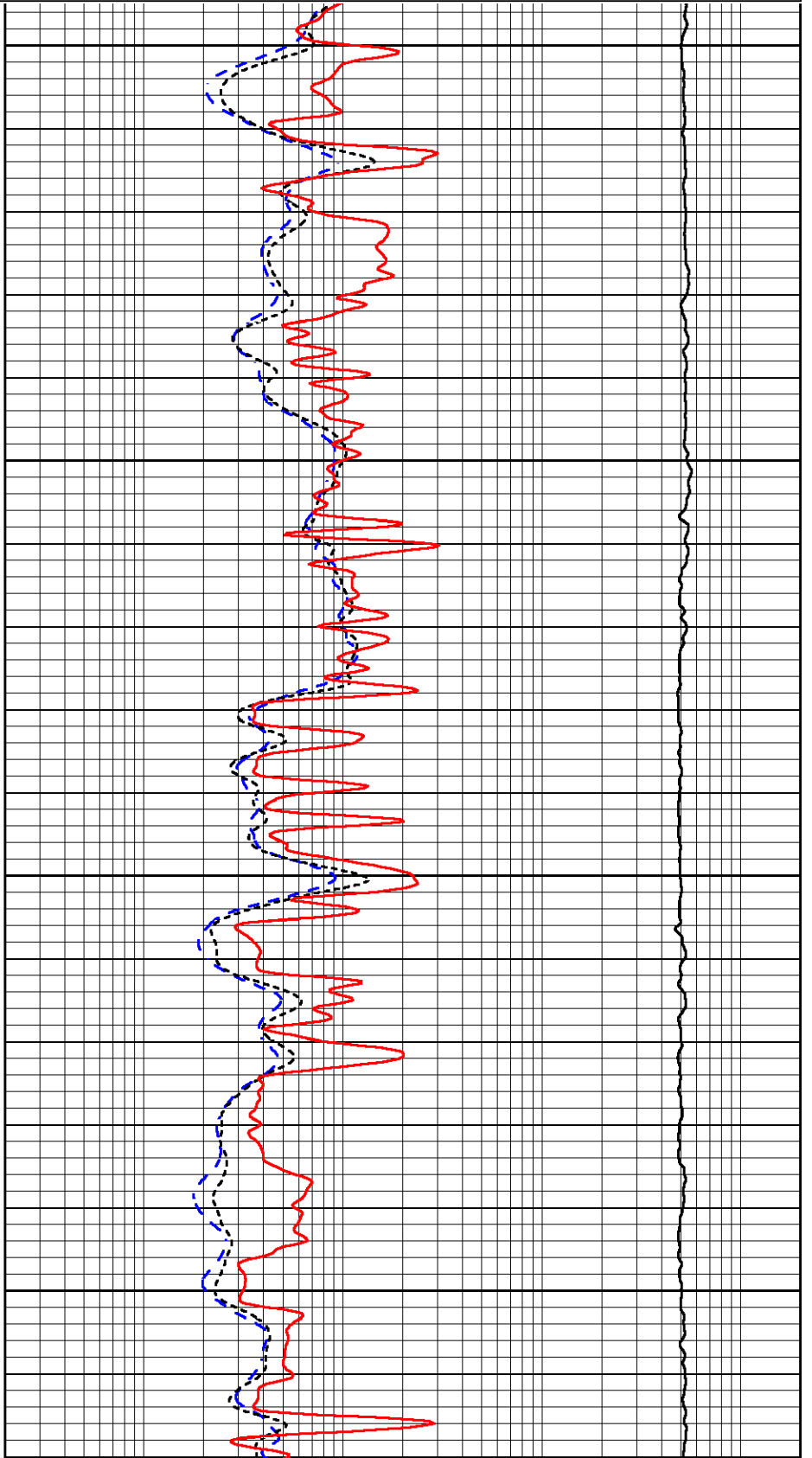


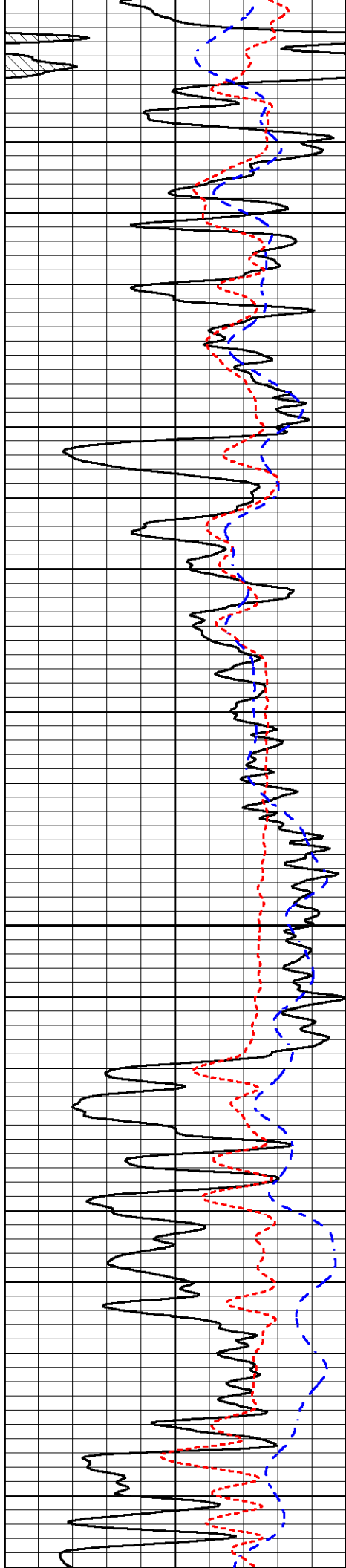
2800

2850

2900

2950



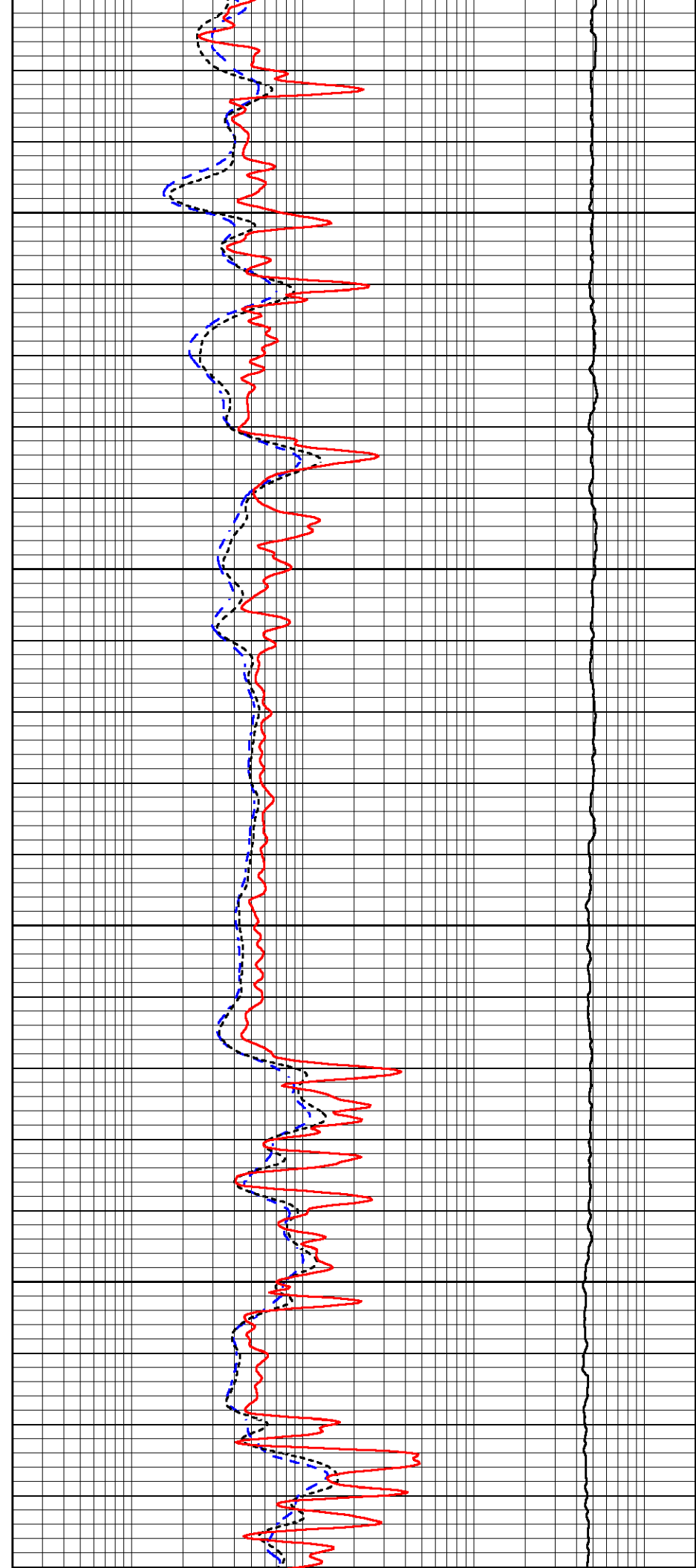


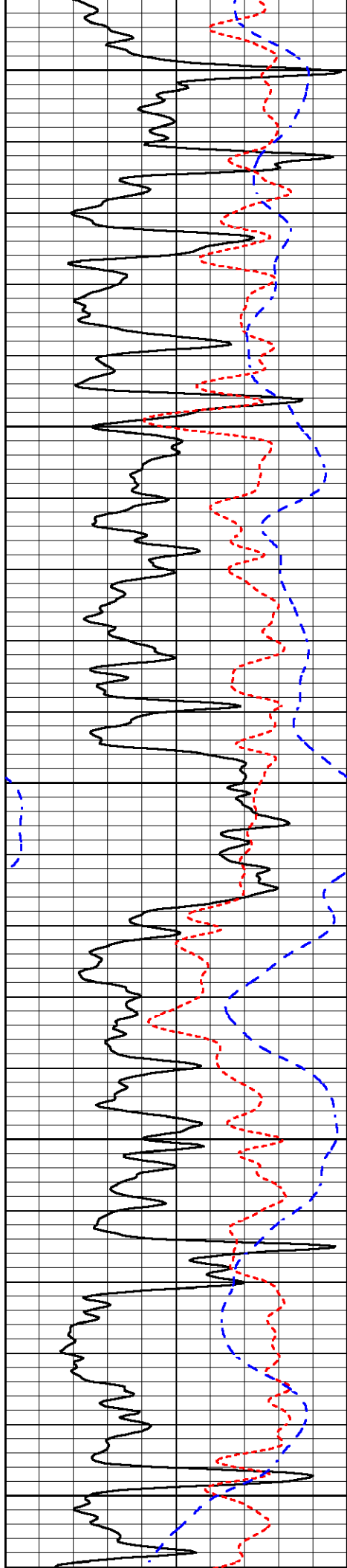
3000

3050

3100

3150





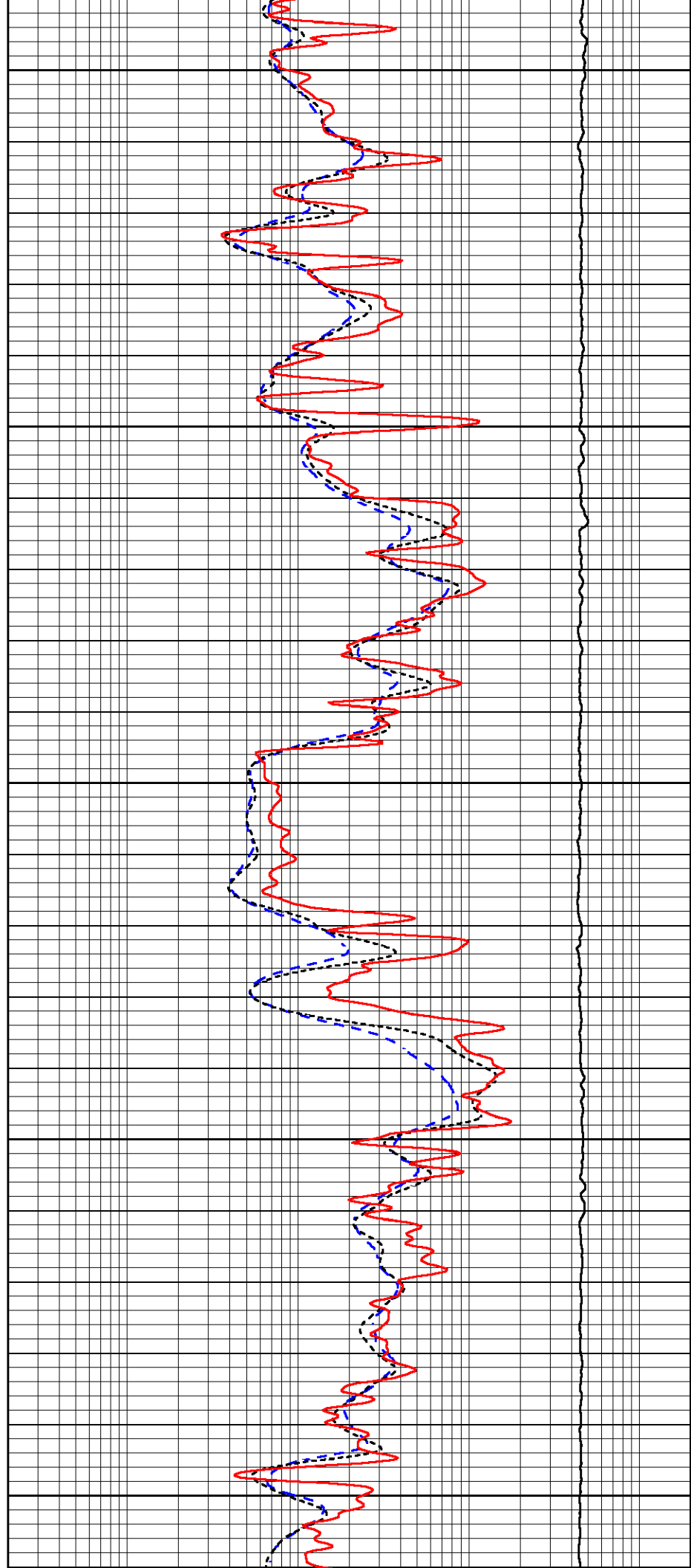
3200

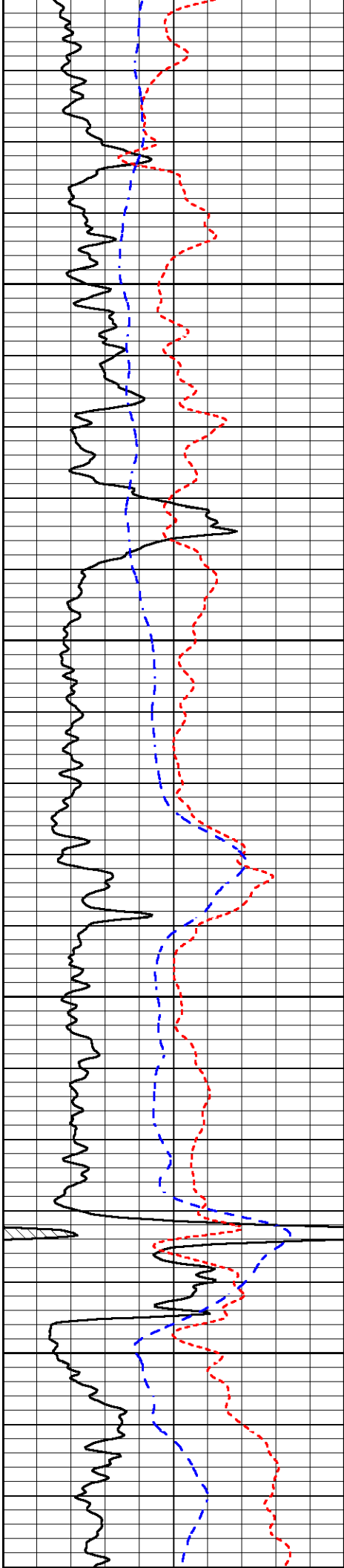
3250

3300

3350

3400



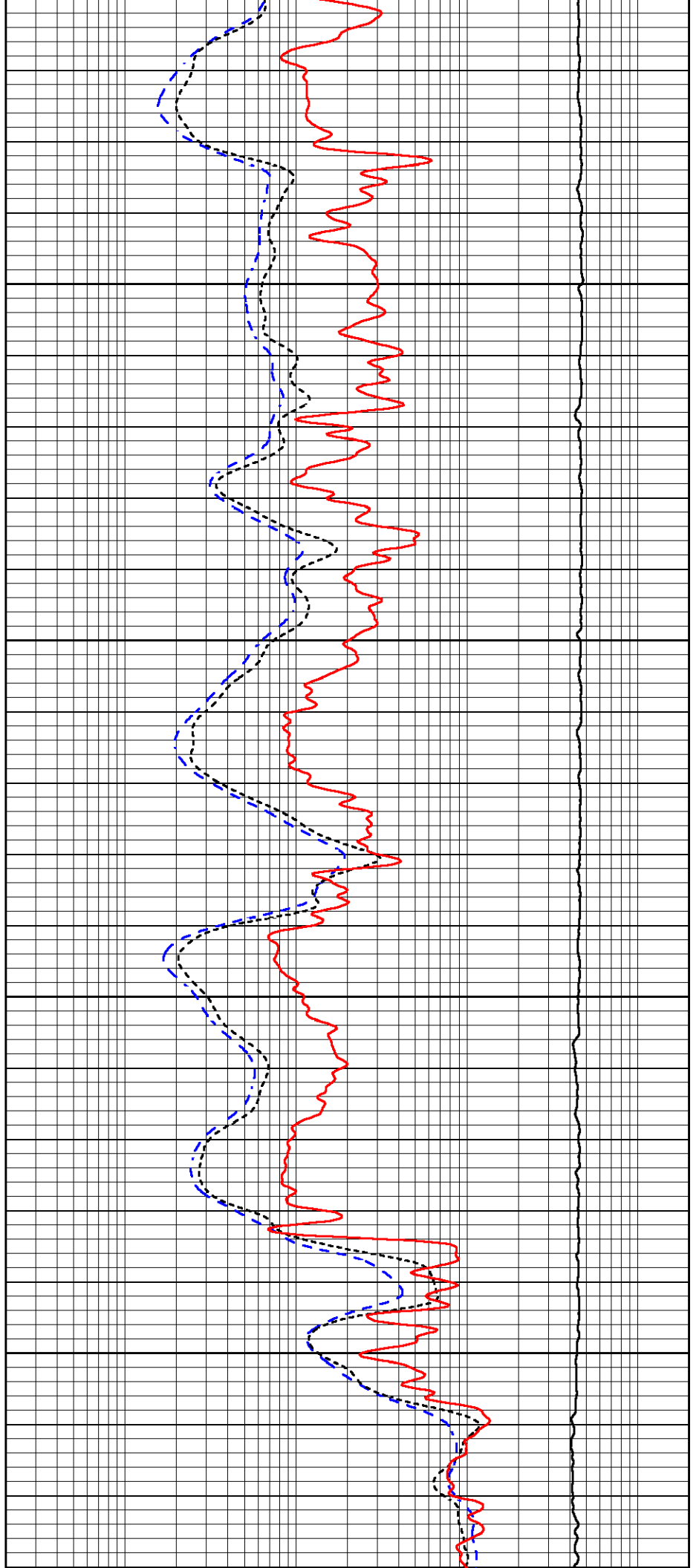


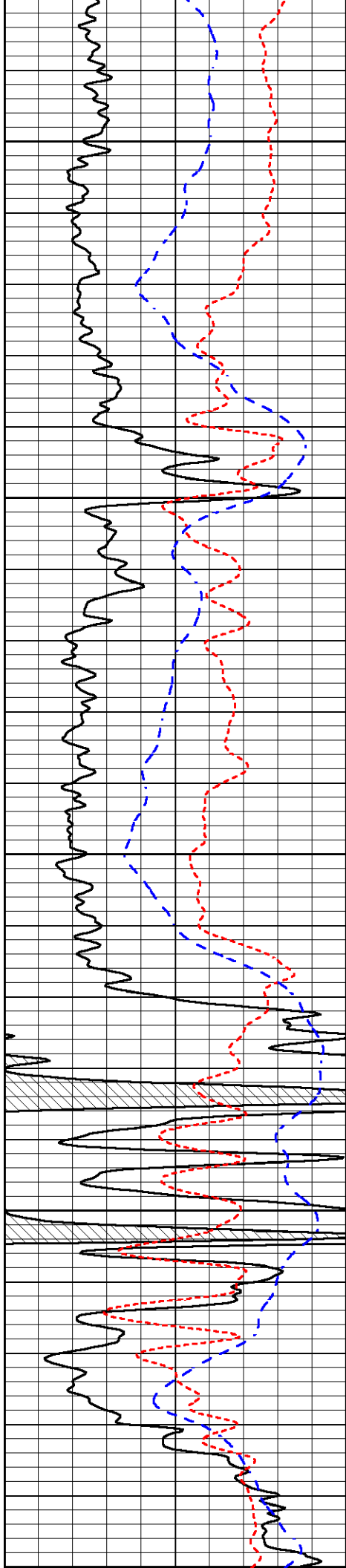
3450

3500

3550

3600





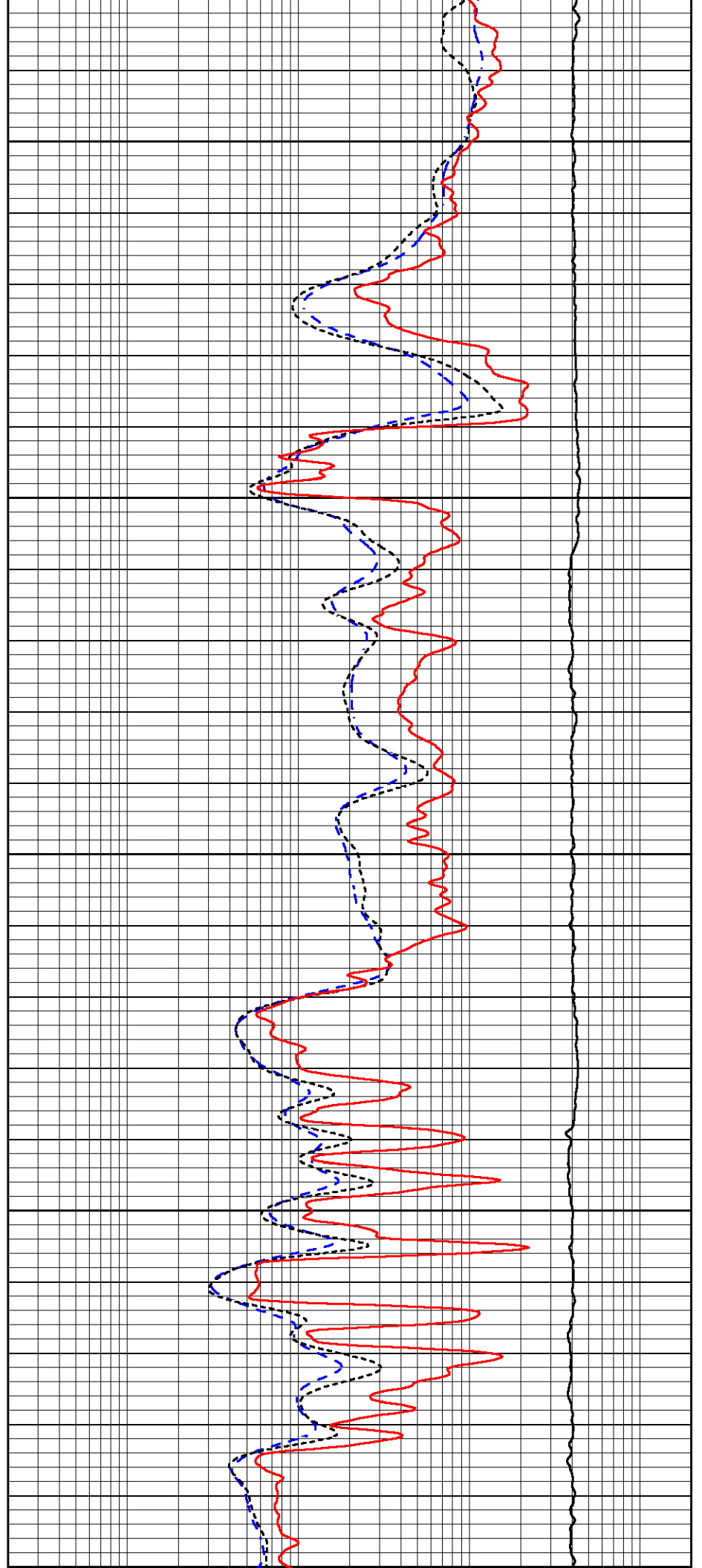
3650

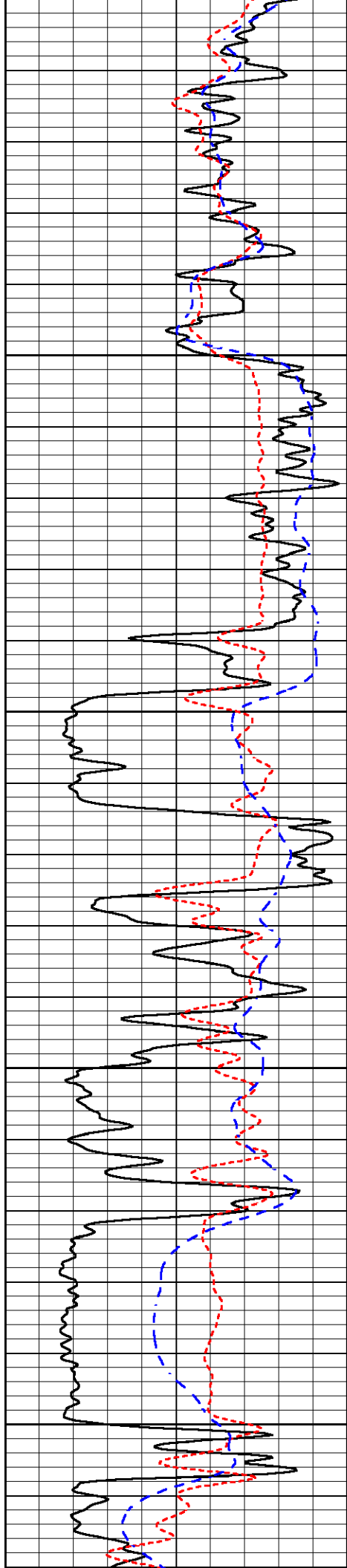
3700

3750

3800

3850





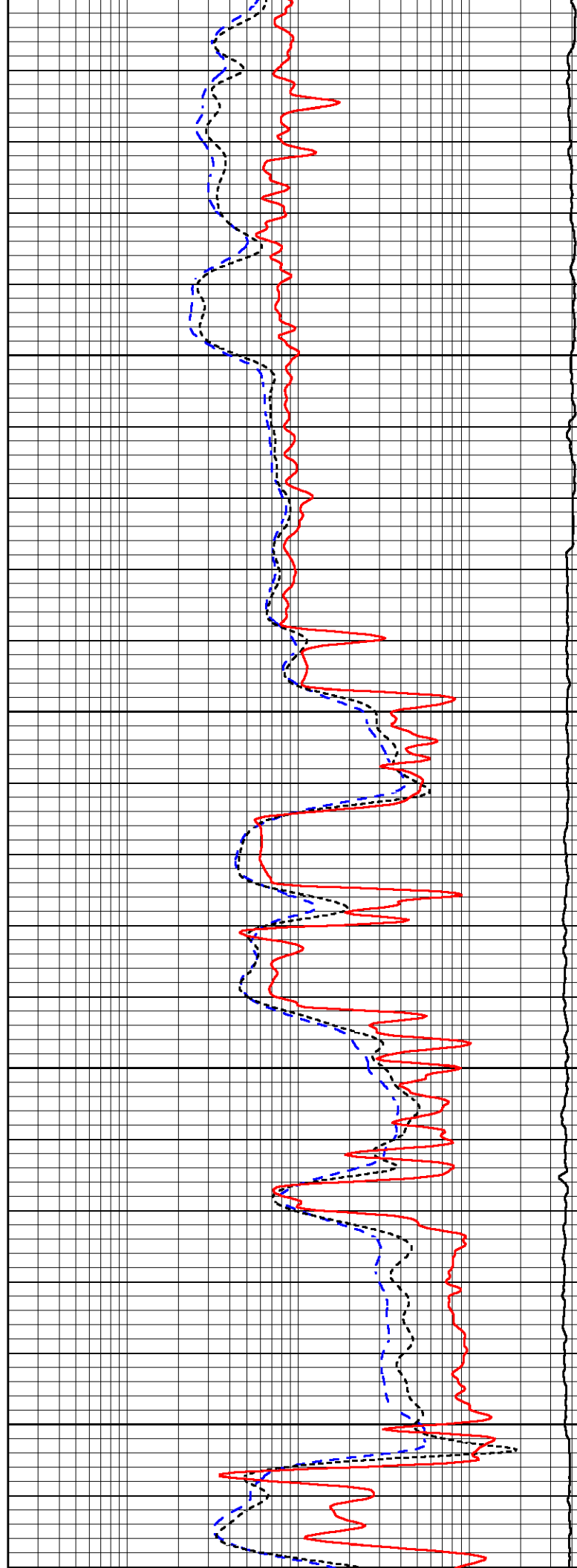
3950

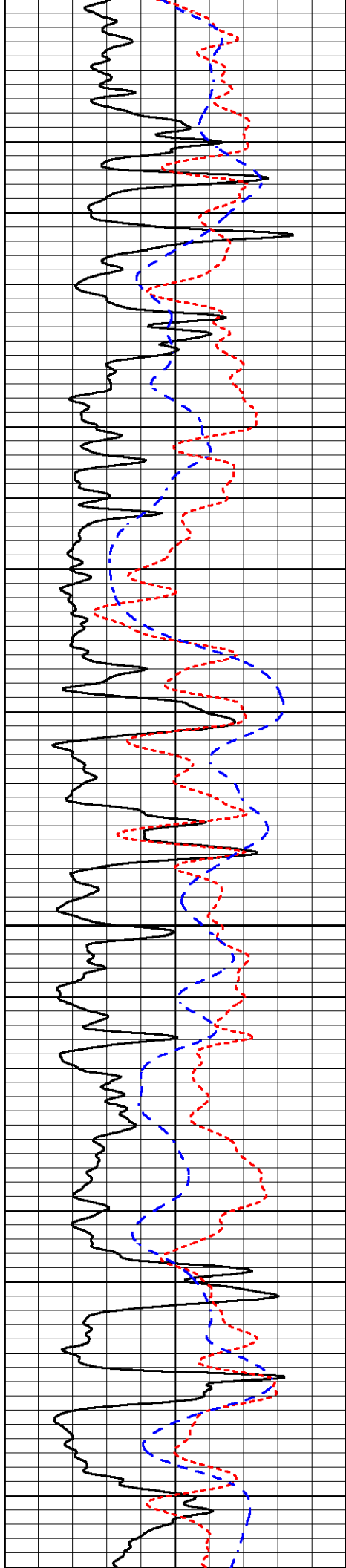
3900

3950

4000

4050



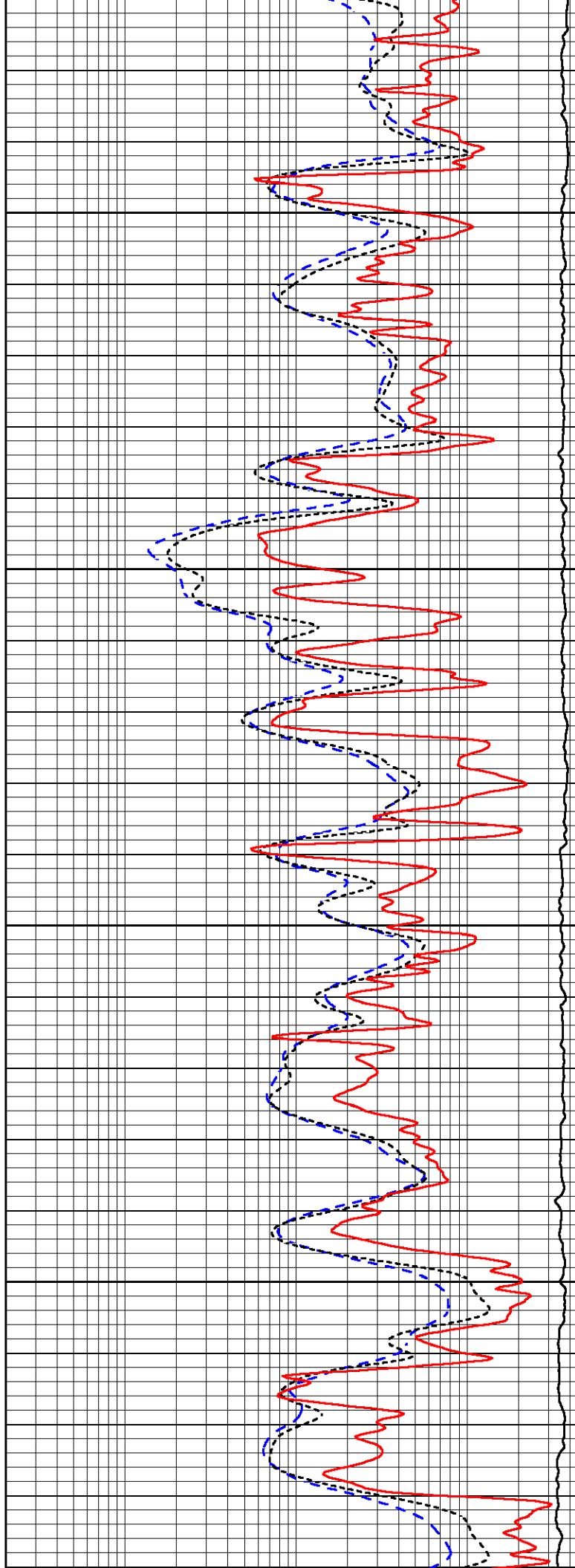


4100

4150

4200

4250

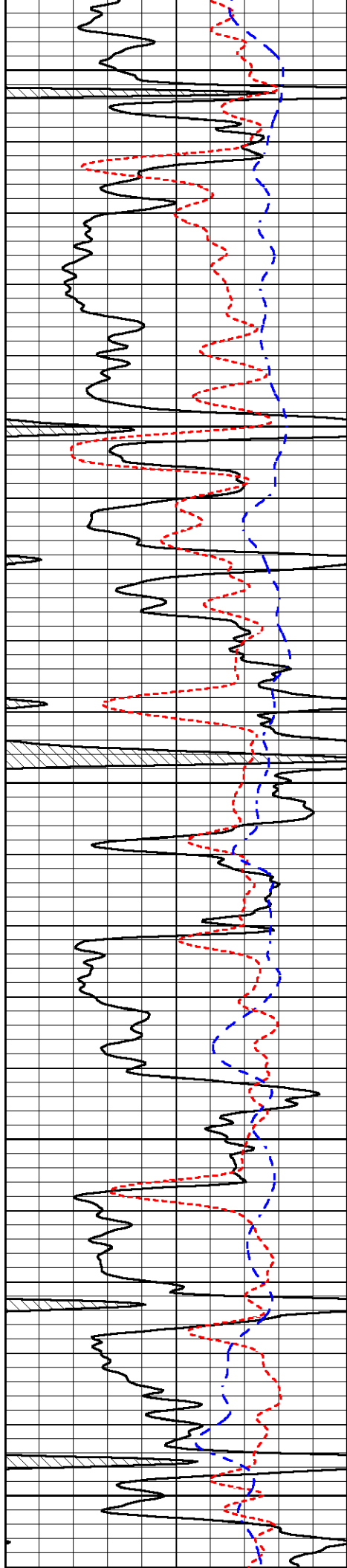


4100

4150

4200

4250



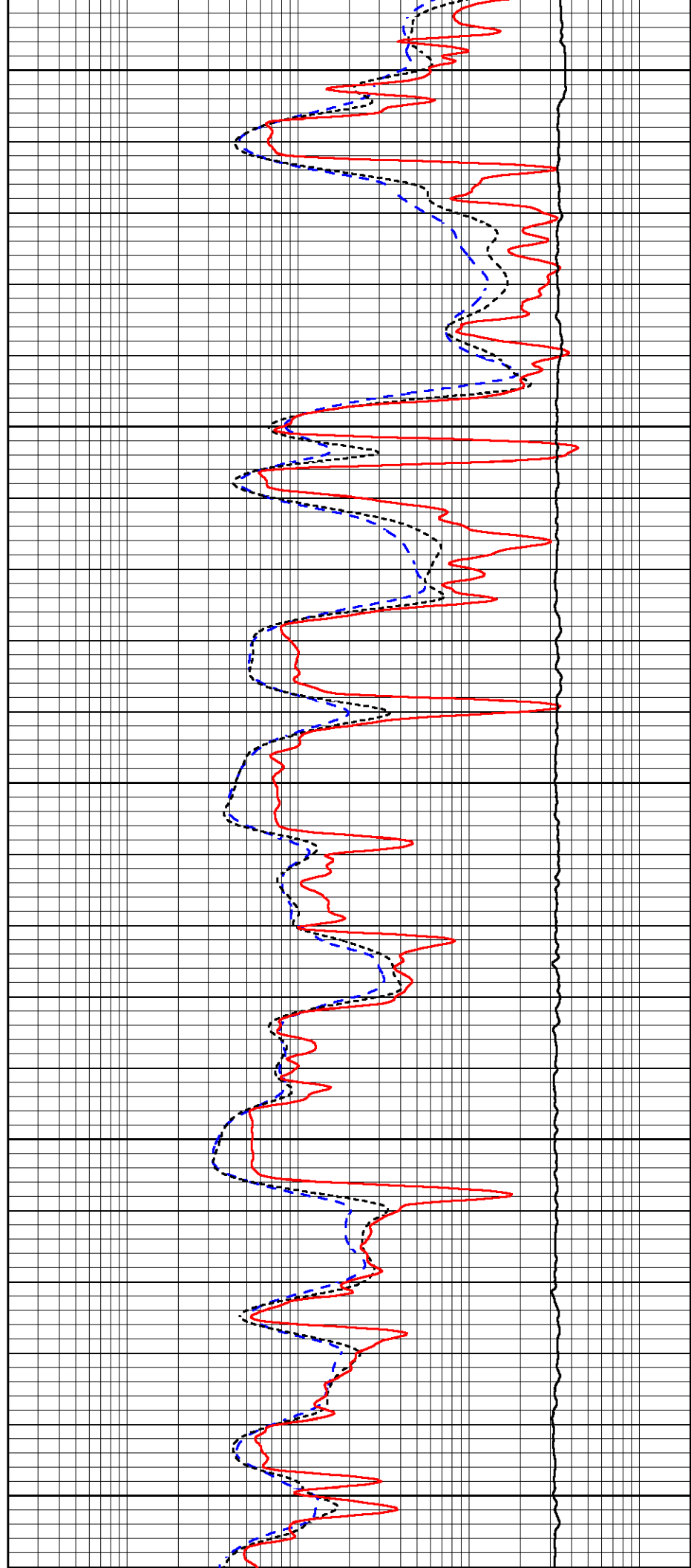
4300

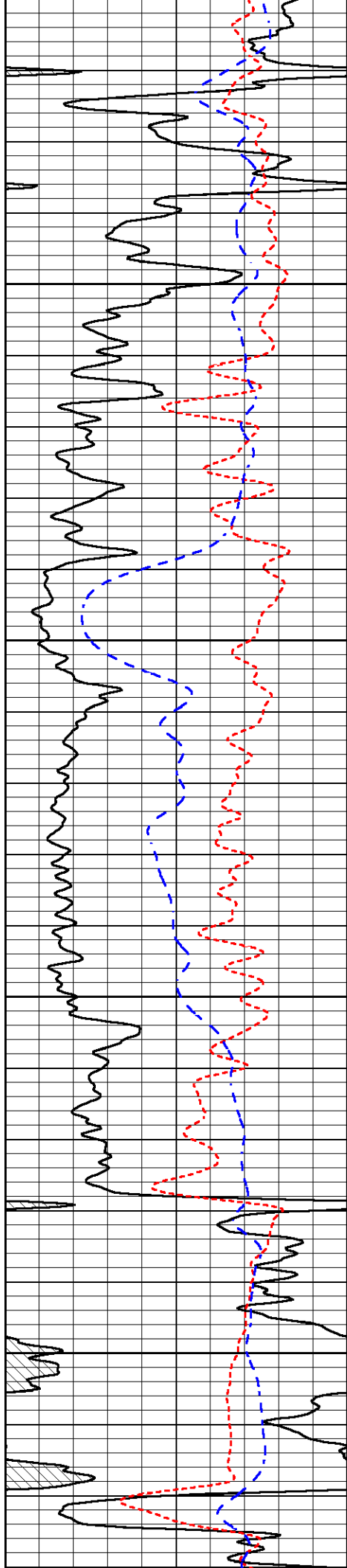
4350

4400

4450

4500



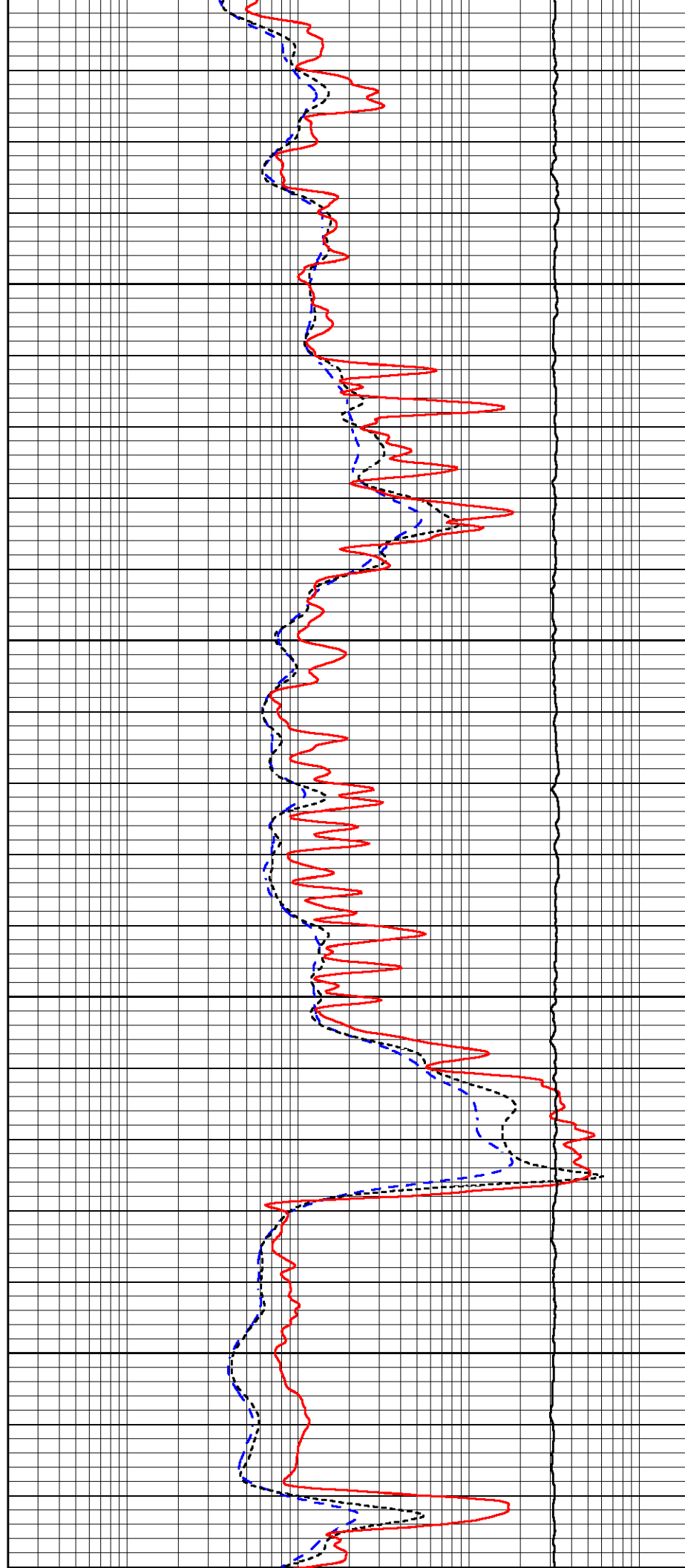


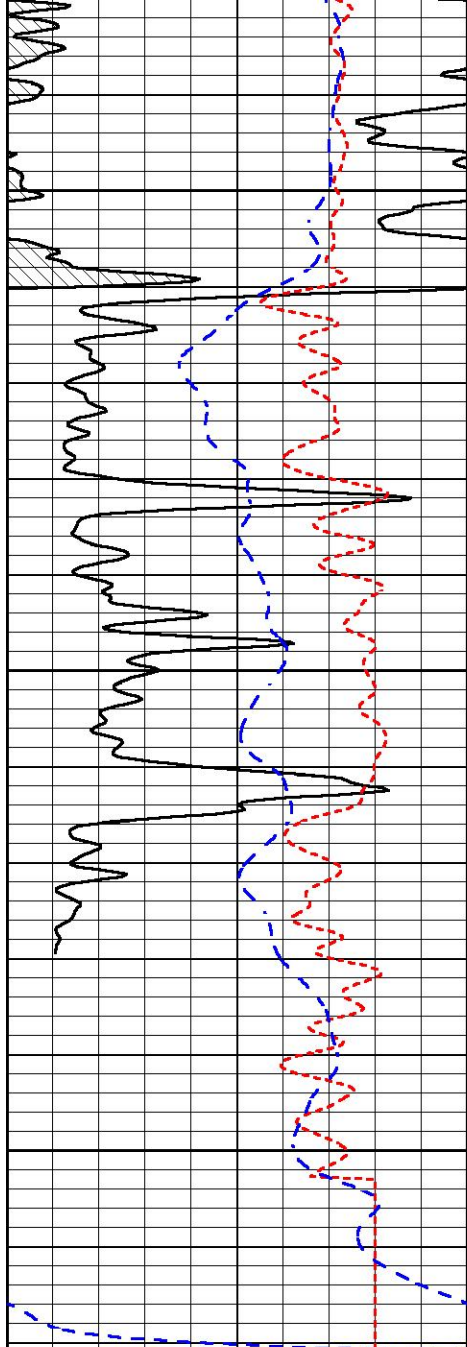
4550

4600

4650

4700



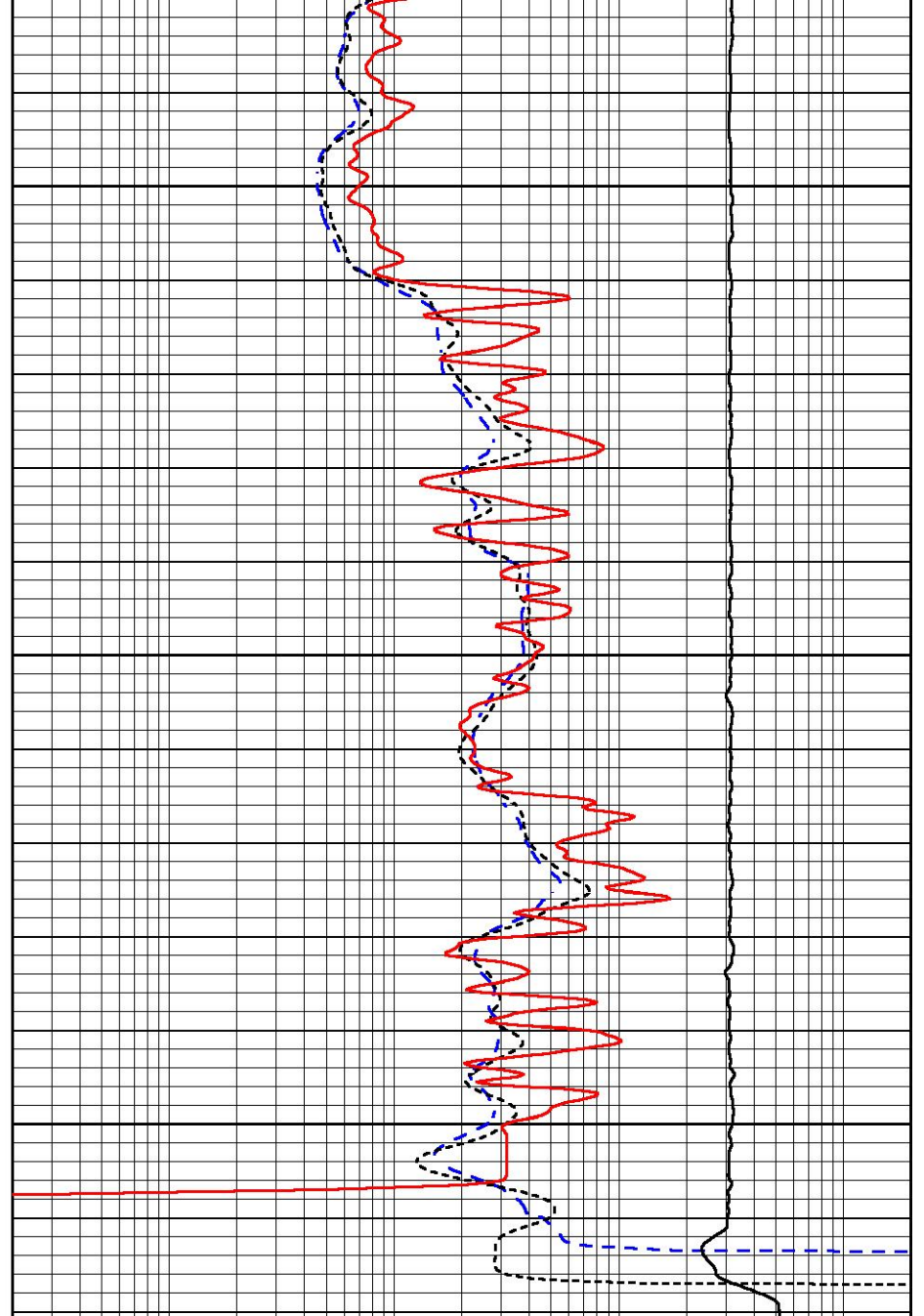


4750

4800

4850

0	Gamma Ray (GAPI)	150
-160	RXORT	40
-200	SP (mV)	0



0.2	Deep Resistivity (Ohm-m)	2000
0.2	Medium Resistivity (Ohm-m)	2000
0.2	RLL3 (Ohm-m)	2000
10000	Line Tension (lb)	0



MIDWEST WIRELINE

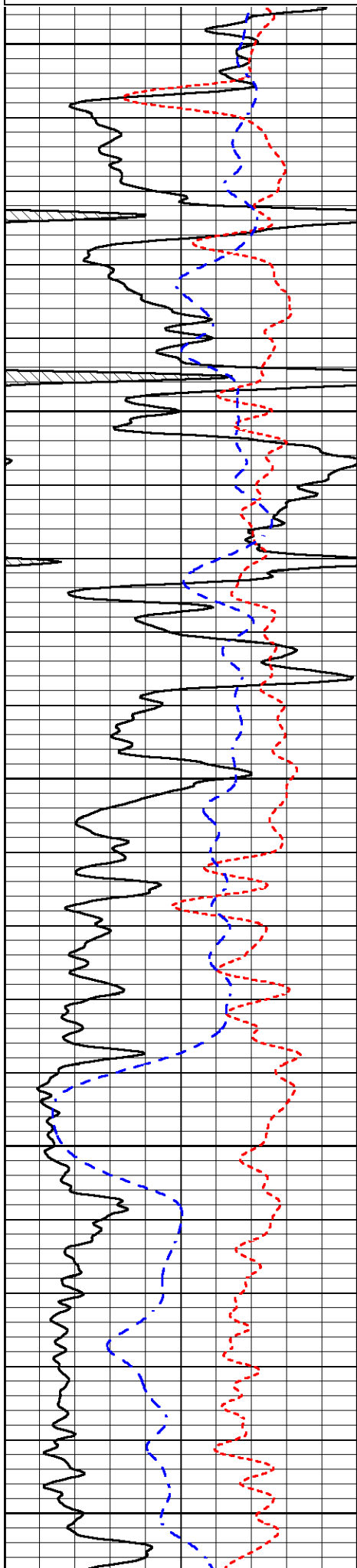
REPEAT SECTION

REPEAT PASS

Database File griffin_jenna_#1.db
 Dataset Pathname stackml/pass2.1
 Presentation Format _dil
 Dataset Creation Tue Aug 26 02:22:16 2025
 Charted by Depth in Feet scaled 1:240

0	Gamma Ray (GAPI)	150
-160	RXORT	40
-200	SP (mV)	0

0.2	Deep Resistivity (Ohm-m)	2000
0.2	Medium Resistivity (Ohm-m)	2000
0.2	RLL3 (Ohm-m)	2000



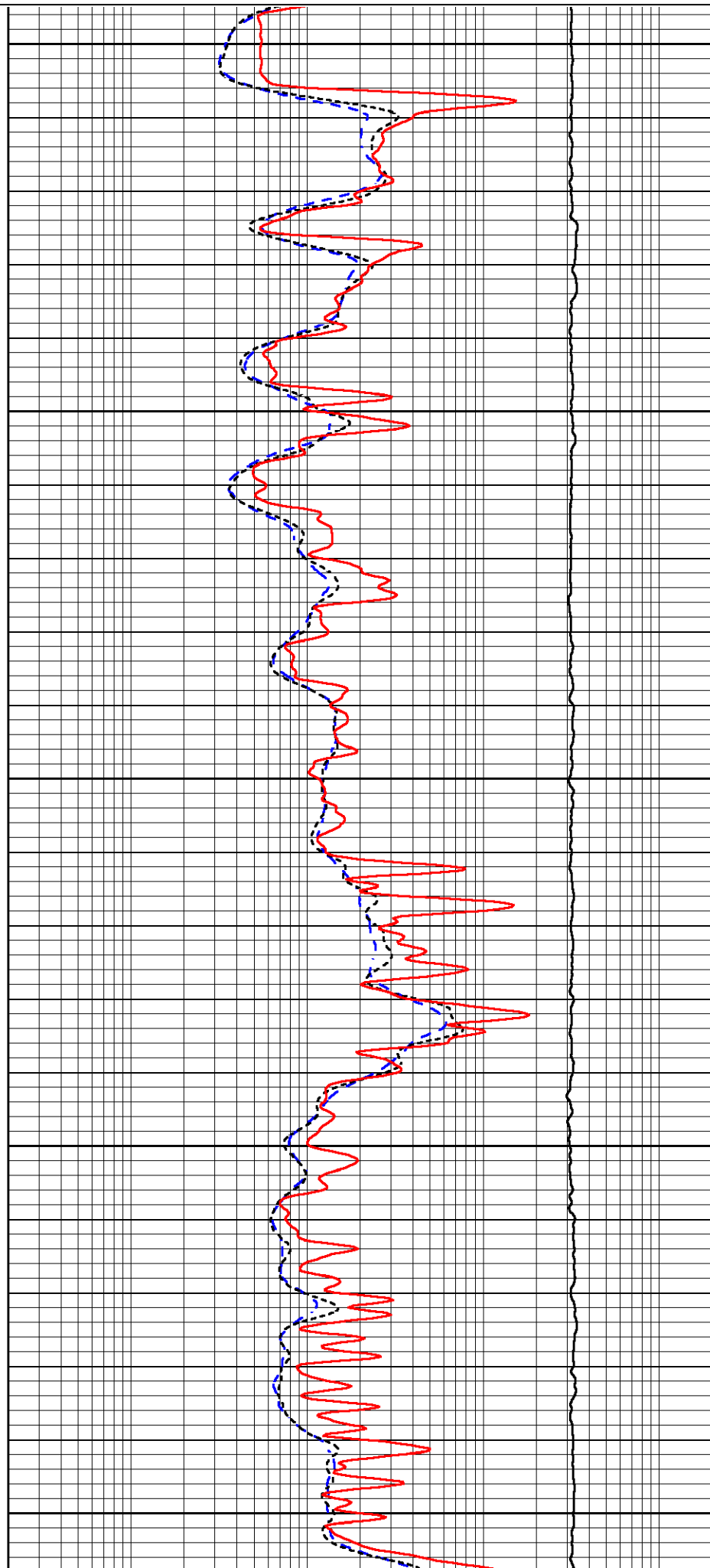
4450

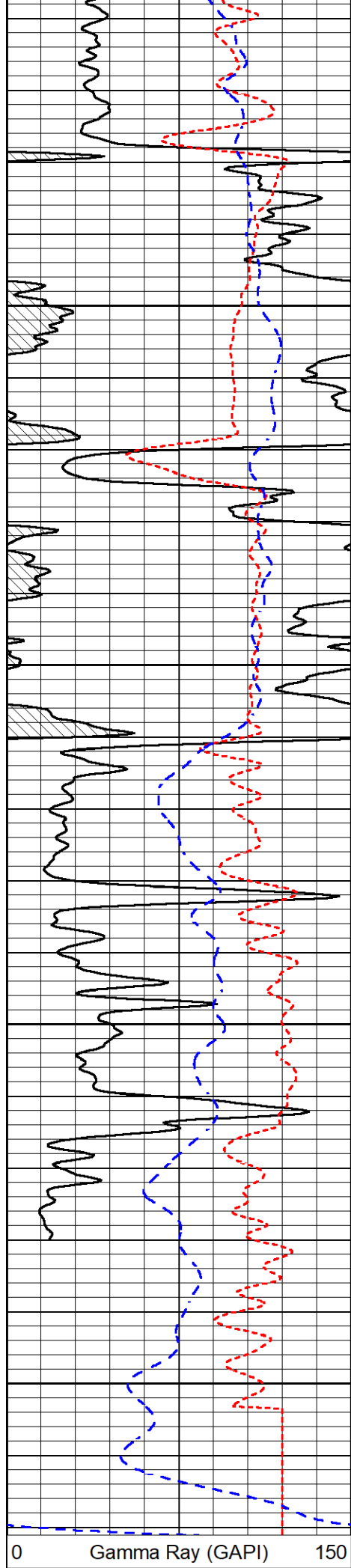
4500

4550

4600

4650





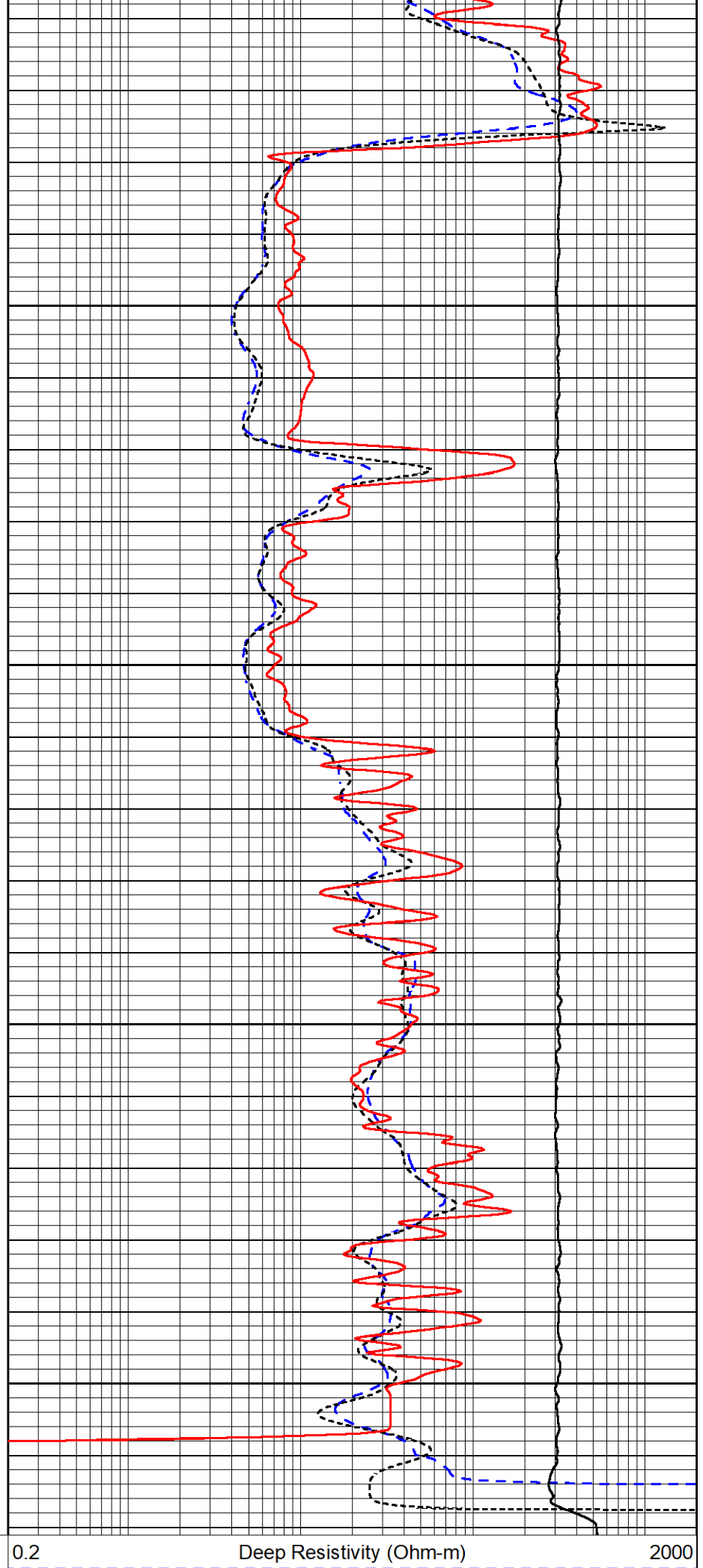
4700

4750

4800

4850

0 Gamma Ray (GAPI) 150



0.2 Deep Resistivity (Ohm-m) 2000

-160	RXOR1	40
-200	SP (mV)	0

0.2	Medium Resistivity (Ohm-m)	2000
0.2	RLL3 (Ohm-m)	2000
10000	Line Tension (lb)	0

Calibration Report

Database File griffin_jenna_#1.db
 Dataset Pathname stackml/pass3.1
 Dataset Creation Tue Aug 26 02:26:08 2025

Dual Induction Calibration Report

Serial-Model: 507-M&W
 Surface Cal Performed:

Loop:	Readings		References			Results	
	Air	Loop	Air	Loop		m	b
Deep	68.570	638.100	0.000	255.800	mmho/m	0.500	-37.000
Medium	184.288	716.191	0.000	255.800	mmho/m	0.450	-79.000

Microlog Calibration Report

Serial-Model: 401-PSIML
 Performed: Fri May 23 17:57:51 2025

	Readings		References			Results	
	Zero	Cal	Zero	Cal		m	b
Normal	0.0000	1.0000	0.0000	1.0000	Ohm-m	11000.0000	0.0000
Inverse	0.0000	1.0000	0.0000	1.0000	Ohm-m	17000.0000	-0.6000
Caliper	1.0052	1.0858	5.0000	16.5000	in	85.0000	-79.7000

LITHODENSITY Calibration Report

Serial Number: 704-10
 Tool Model: STEP LITHO
 Performed: Tue Apr 15 14:57:15 2025

Source:

	Win1	Win2	Win3	Win4	Win5	Win6	Win7	Win8	
Background:									
SS:	52	55	204	256	22	72	46	0	cps
LS:	82	92	353	452	52	145	93	3	cps
Aluminum:									
SS:	1057	1257	2829	2441	41	72	47	2	cps
LS:	1112	1906	3597	1727	62	140	93	5	cps
Magnesium:									
SS:	1757	2019	4660	3565	49	72	49	4	cps
LS:	4717	7741	14082	5659	106	129	91	15	cps
Aluminum+Iron:									
SS:	665	880	2358	2103	40	75	48	2	cps
LS:	648	1367	3077	1554	58	139	94	5	cps

	Density	PE			
	Actual	Calibrated	Actual	Calibrated	Quality
Background:					
SS:					0.218
LS:					0.217

Aluminum:
 SS: 2.6000 2.6000 g/cc 0.207
 LS: 2.6000 2.6000 g/cc 0.201
 Magnesium:
 SS: 1.6800 1.6800 g/cc 2.5700 2.5700 0.185
 LS: 1.6800 1.6800 g/cc 2.5700 2.5700 0.175
 Aluminum+Iron:
 SS: 6.1800 0.217
 LS: 6.1800 0.193

Before Survey
 Performed: Wed Feb 9 13:15:42 2022
 SS: 0 0 0 0 0 0 0 0 cps
 LS: 1370 1580 3705 3037 48 80 50 4 cps
 After Survey
 Performed: Wed Feb 9 13:16:02 2022
 SS: 0 0 0 0 0 0 0 0 cps
 LS: 1400 1600 3800 3100 60 100 70 6 cps

Caliper: Reference: Reading:
 Small Ring: 6.0 in 0.2
 Large Ring: 16.0 in 0.8
 Gain: 18.000
 Offset: 0.450

Compensated Neutron Calibration Report

Serial Number: 201-M&W
 Tool Model: M&W

CALIBRATION

Detector	Readings	Target	Normalization
Short Space	6240.00 cps	1000.00 cps	1.6025
Long Space	460.00 cps	1000.00 cps	1.9500

PRE-SURVEY VERIFICATION

Detector	Readings	Measured	Target
1) Short Space	cps		
Long Space	cps	pu	pu
2) Short Space	cps		
Long Space	cps	pu	
3) Short Space	cps		
Long Space	cps	pu	

POST-SURVEY VERIFICATION

Detector	Readings	Measured	Target
1) Short Space	cps		
Long Space	cps	pu	pu
2) Short Space	cps		
Long Space	cps	pu	pu
3) Short Space	cps		
Long Space	cps	pu	pu

Gamma Ray Calibration Report

Serial Number: 105
 Tool Model: M&W

Tool Model:	M&W	
Performed:	Mon Aug 7 20:46:01 2023	
Calibrator Value:	500.0	GAPI
Background Reading:	24.0	cps
Calibrator Reading:	637.0	cps
Sensitivity:	0.6000	GAPI/cps



Company	Griffin Management, LLC
Well	Jenna #1
Field	Turkey Creek East
County	Barber
State	Kansas