



MIDWEST WIRELINE

**DUAL COMPENSATED  
POROSITY W/PE**

Company **Griffin Management, LLC**  
 Well **Jenna #1**  
 Field **Turkey Creek East**  
 County **Barber** State **Kansas**

Company **Griffin Management, LLC**  
 Well **Jenna #1**  
 Field **Turkey Creek East**  
 County **Barber**  
 State **Kansas**

Location: **API #: 15-007-24513-00-00** Other Services  
**E2 NW SW SE**  
**990 FSL & 2300 FEL**  
**SEC 16 TWP 30S RGE 15W**  
 Permanent Datum **Ground Level** Elevation **1875**  
 Log Measured From **Kelly Bushing**  
 Drilling Measured From **Kelly Bushing**  
 Elevation **K.B. 1880**  
**D.F. 1875**  
**G.L. 1875**

Date	8/25/2025						
Run Number	One						
Type Log	CNL/CDL						
Depth Driller	4864						
Depth Logger	4866						
Bottom Logged Interval	4838						
Top Logged Interval	2800						
Type Fluid In Hole	Chemical						
Salinity, PPM CL	6000						
Density	9.4						
Level	Full						
Max. Rec. Temp. F	125						
Operating Rig Time	3 Hrs						
Equipment -- Location	P-24 Hays						
Recorded By	M. Hiss / T. Martin						
Witnessed By	Eli Felts						
Borehole Record							
Run No.	Bit	From	To	Size	Wgt.	From	To
One	12.25	00	1018	8.625"	23	00	1018
Two	7.875	00	TD				
Casing Record							

<<< Fold Here >>>

All interpretations are opinions based on inferences from electrical or other measurements and Midwest Wireline Services, LLC cannot and does not guarantee the accuracy or correctness of any interpretation, and Midwest Wireline Services, LLC will not be liable or responsible for any loss, costs, damages, or expenses incurred or sustained by anyone resulting from any interpretation made by any of our officers, agents or employees.

**Comments**

**N/A DENOTES NOT AVAILABLE OR NON-APPLICABLE.**

**Coats KS, South to 110 rd, 1 East, South Into.**

**Log Measured From: Kelly Bushing 5 Ft. Above Permanent Datum**

**THANK YOU FOR USING MIDWEST WIRELINE LLC  
785-625-3858**

<b>Your Midwest Wireline Crew</b>		<b>This Log Record Was Witnessed By</b>	
Engineer: M. Hiss / T. Martin		Primary Witness: Eli Felts	
Operator:		Secondary Witness:	
Operator:		Secondary Witness:	
Operator:		Secondary Witness:	

Sensor	Offset (ft)	Schematic	Description	Length (ft)	O.D. (in)	Weight (lb)	
GR	40.75		GR-M&W (105)	3.00	3.50	50.00	
CNLSC CNSSC	37.65 36.90		CNT-M&W (201-M&W)	5.00	3.50	100.00	
				MWLith-STEP LITHO (704-10) Long Litho Mandrel	8.92	5.00	250.00
LCAL	28.21						
LLW8N	28.21						
LLW7N	28.21						
LLW6N	28.21						
LLW5N	28.21						
LLW4N	28.21						
LLW3N	28.21						
LLW2N	28.21			ML-PSIML (401)	7.58	4.00	65.00
LLW1N	28.21						
LSLOCK	27.96						
LLLOCK	27.96						
PELTMPR	27.96						
LSHVNG	27.96						
LLHVNG	27.96						
LSW8N	27.71						
LSW7N	27.71						
LSW6N	27.71						
LSW5N	27.71						
LSW4N	27.71						
LSW3N	27.71						
LSW2N	27.71						
LSW1N	27.71						
MCAL	19.58		DIL-M&W (507)	18.25	3.50	220.00	
MI	19.58						
MN	19.58						
RLL3F	15.50						
RLL3	15.50						
CILD	8.33						
CILM	4.50						
SP	0.20						

Dataset: griffin\_jenna\_#1.db: field/well/stackml/pass3.1  
 Total length: 42.75 ft  
 Total weight: 685.00 lb  
 O.D.: 5.00 in

# Log Variables

DatabaseC:\ProgramData\Warrior\Data\griffin\_jenna\_#1.db  
 Dataset field/well/stackml/pass3.1/\_vars\_

## Top - Bottom

A	BOREID in	BOTTEMP degF	CASEOD in	CASETHCK in	FLUIDDEN g/cc	M	MATRXDEN g/cc
1	7.875	125	5.5	0	1	2	2.71
NPORSEL	PERFS	SNDERR mmho/m	SNDERRM mmho/m	SPSHIFT mV	SRFTEMP degF	SZCOR	TDEPTH ft
Limestone	No	2.5	-6	640	70	Off	4866

## Variable Description

A : Cement Factor (a)  
 BOREID : Borehole I.D.  
 BOTTEMP : Bottom Hole Temperature  
 CASEOD : Casing O.D.  
 CASETHCK : Casing Thickness  
 FLUIDDEN : Fluid Density  
 M : Cement Exp (m)  
 MATRXDEN : Matrix Density

NPORSEL : Neutron Porosity Curve Select  
 PERFS : Perforation Flag  
 SNDERR : Deep Sonde Error Correction  
 SNDERRM : Medium Sonde Error Correction  
 SPSHIFT : S.P. Baseline Offset  
 SRFTEMP : Surface Temperature  
 SZCOR : CN Size Cor. ?  
 TDEPTH : Total Depth

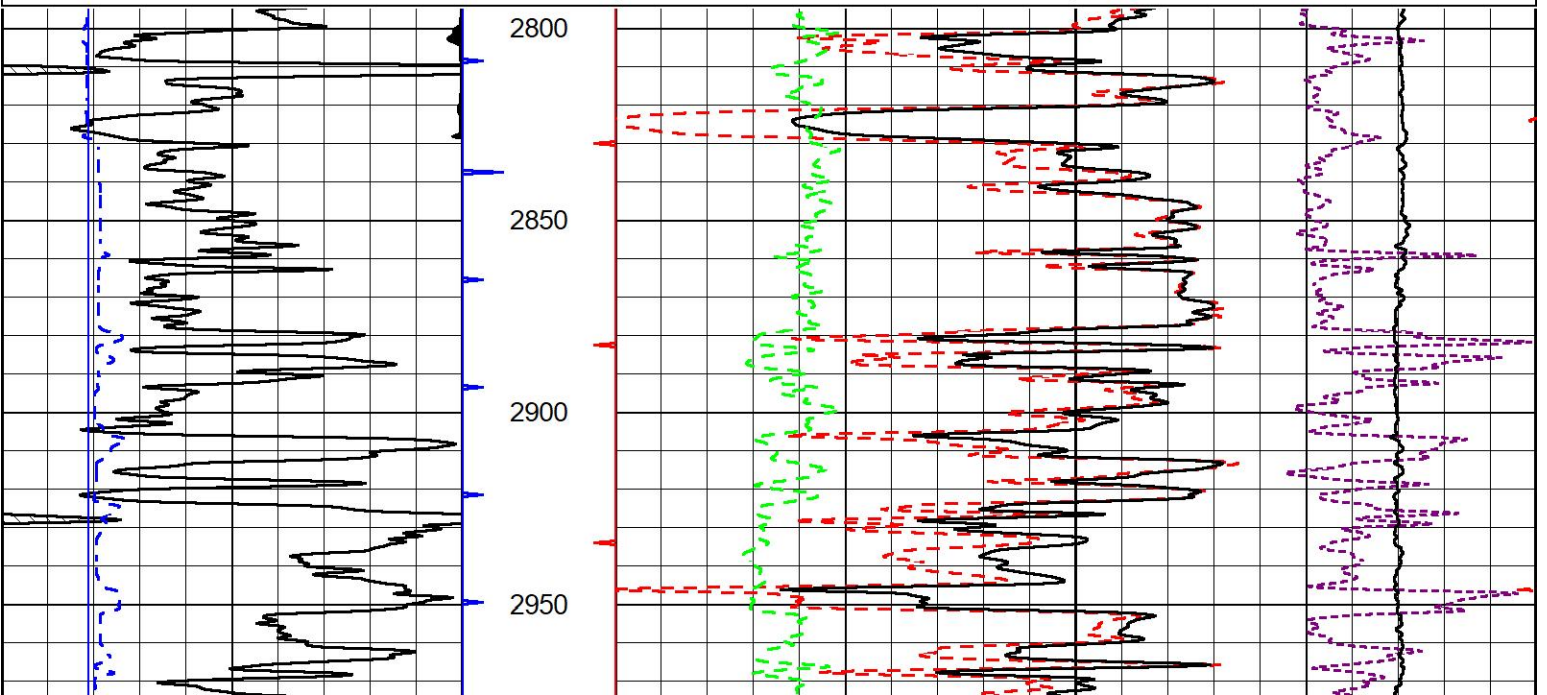


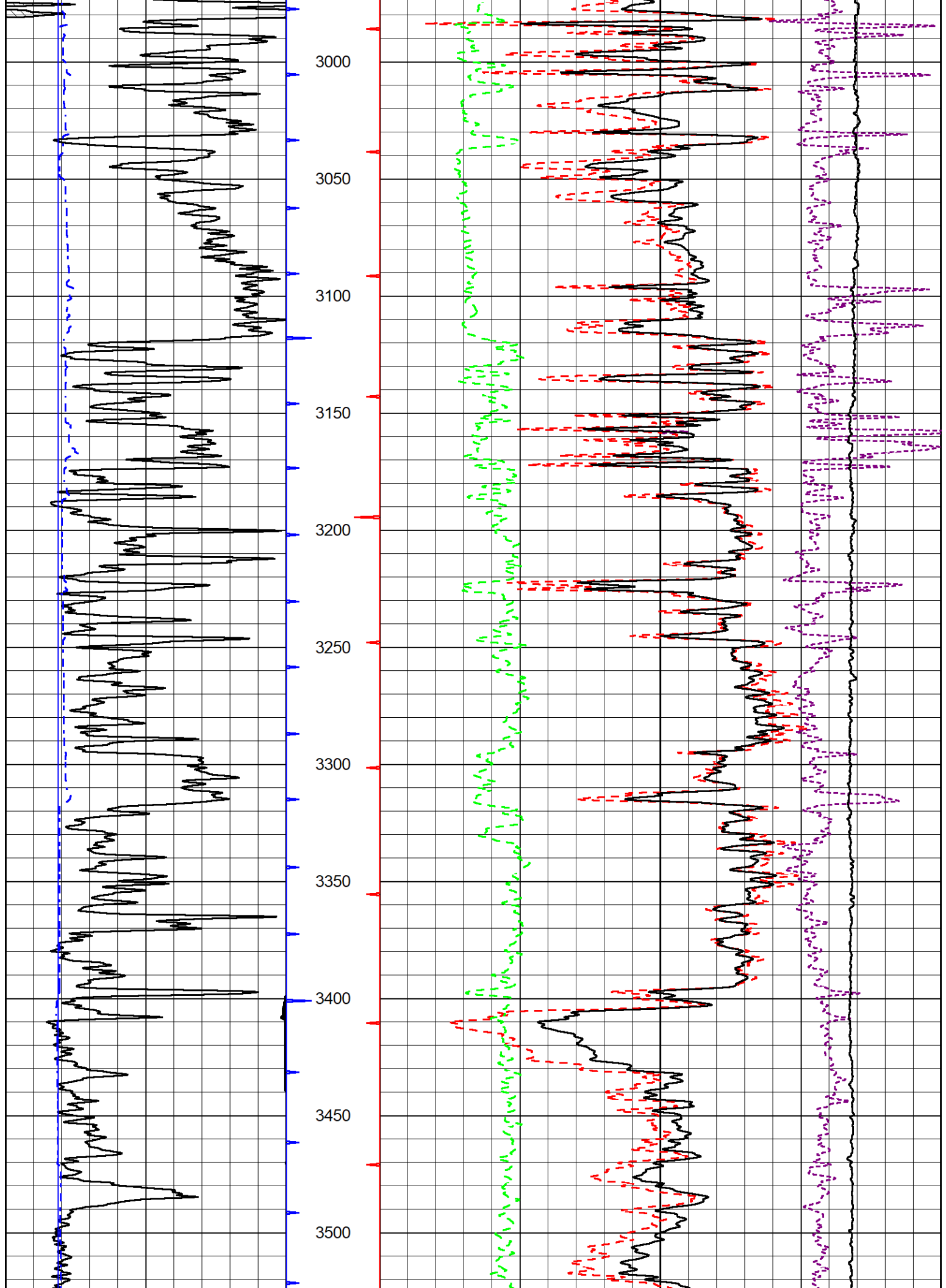
## 2" SCALE BULK DENSITY

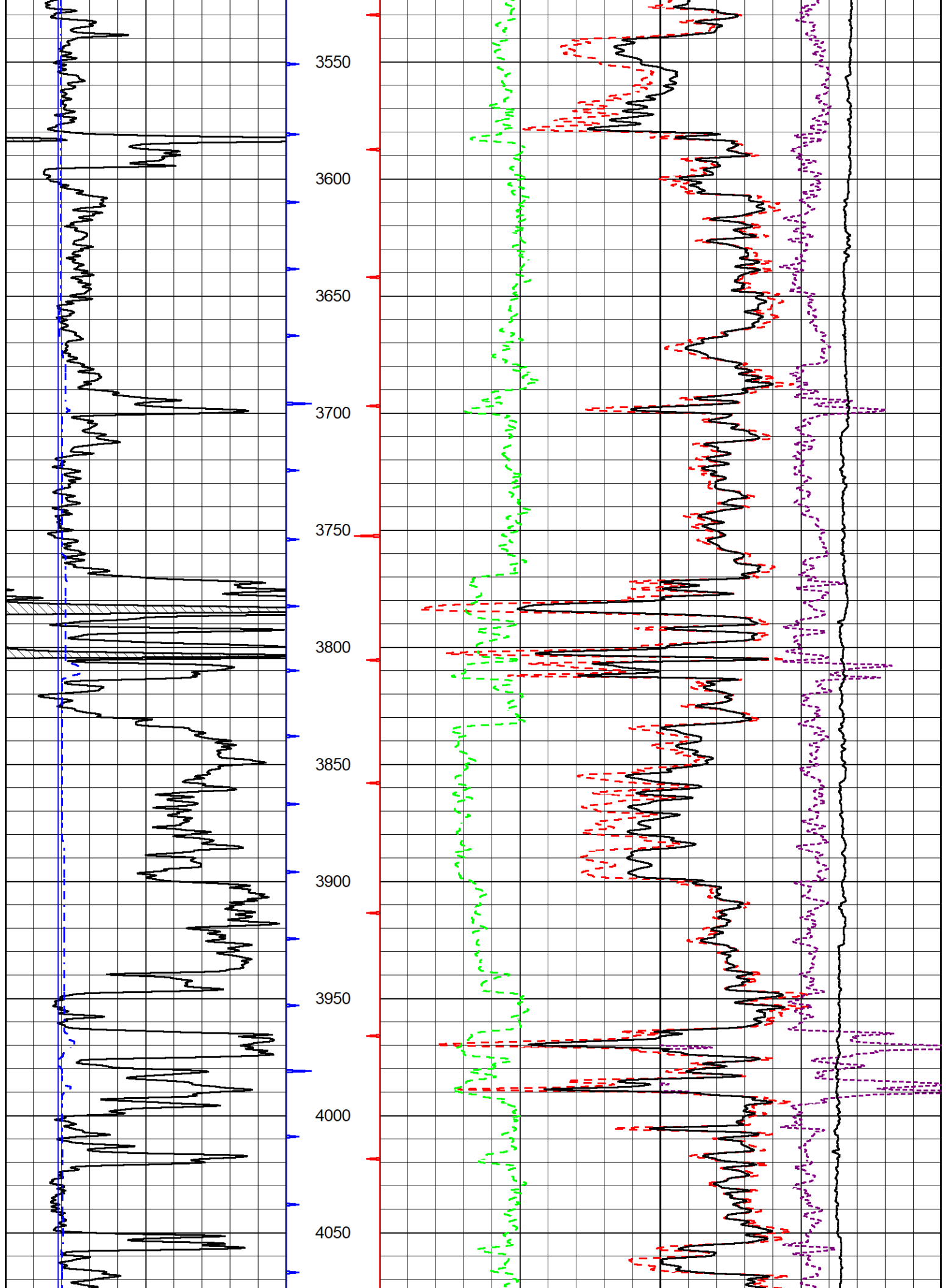
### MAIN PASS

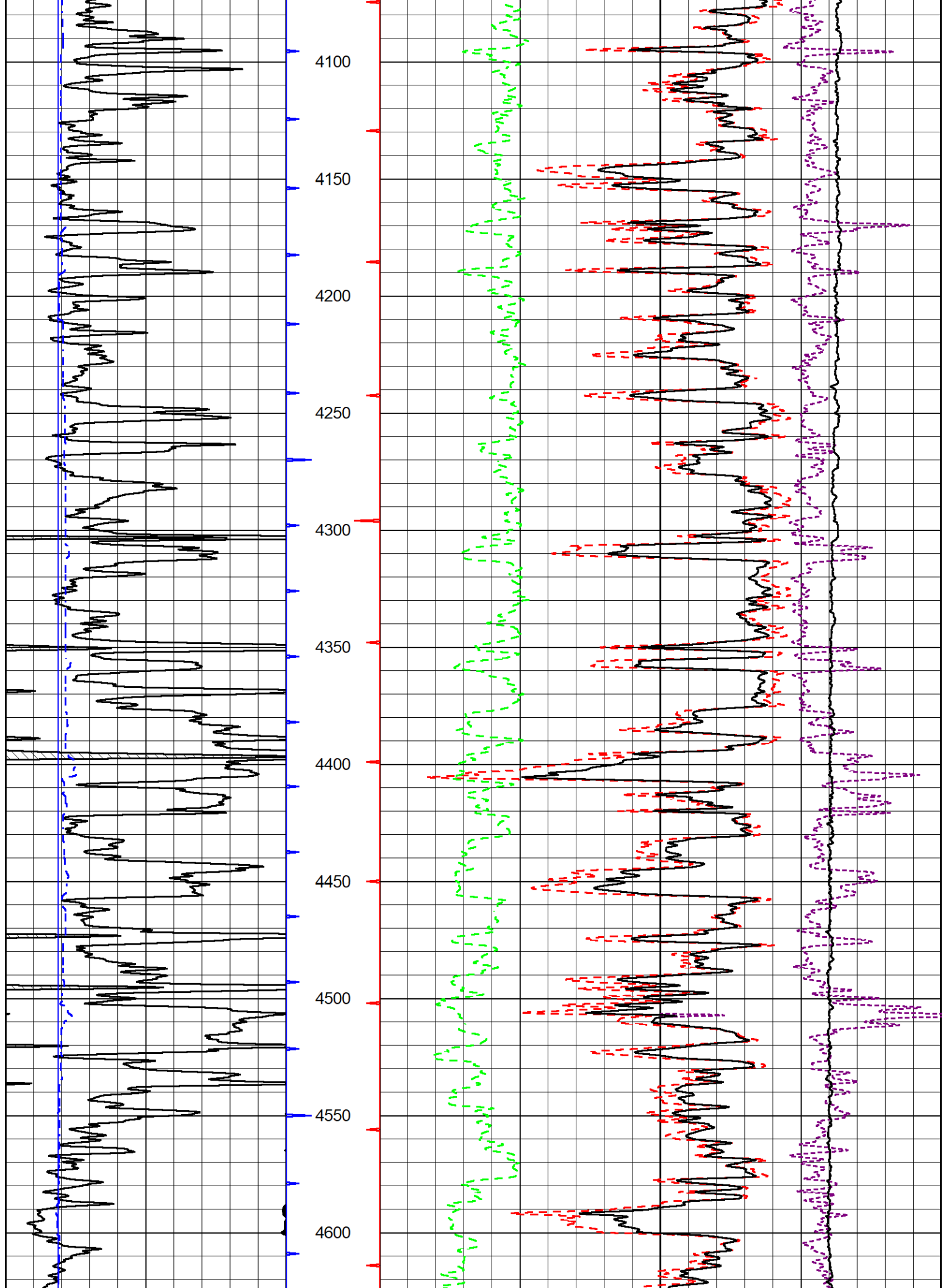
Database File griffin\_jenna\_#1.db  
 Dataset Pathname stackml/pass3.3  
 Presentation Format \_cdlpe  
 Dataset Creation Tue Aug 26 02:26:49 2025  
 Charted by Depth in Feet scaled 1:600

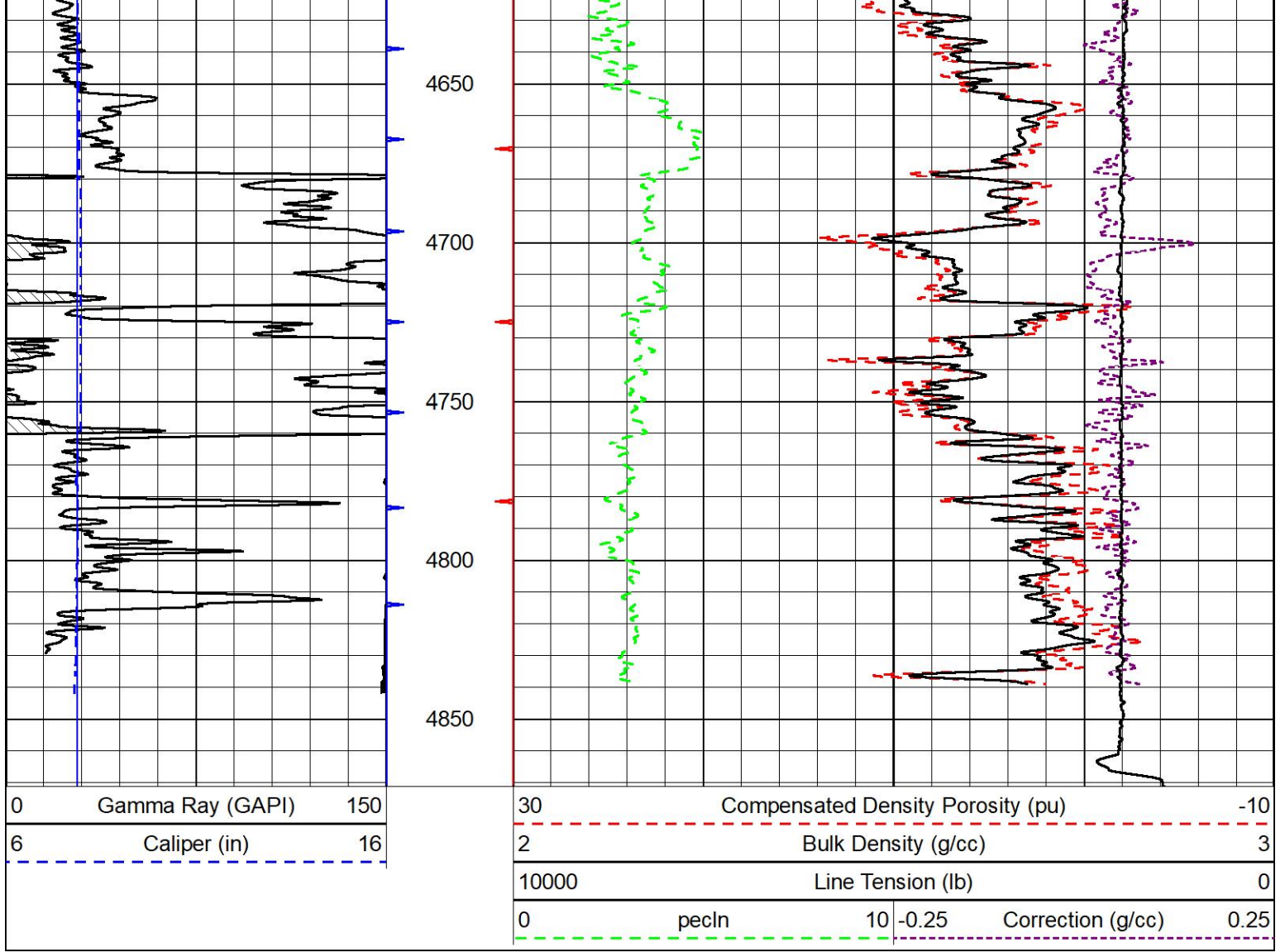
0	Gamma Ray (GAPI)	150	30	Compensated Density Porosity (pu)	-10
6	Caliper (in)	16	2	Bulk Density (g/cc)	3
			10000	Line Tension (lb)	0
			0	pecln	10 -0.25
				Correction (g/cc)	0.25







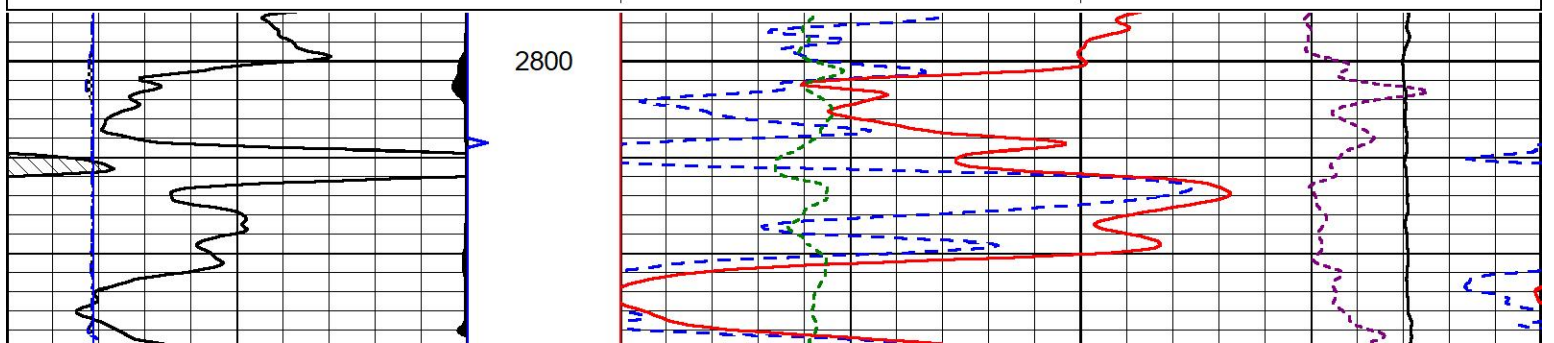
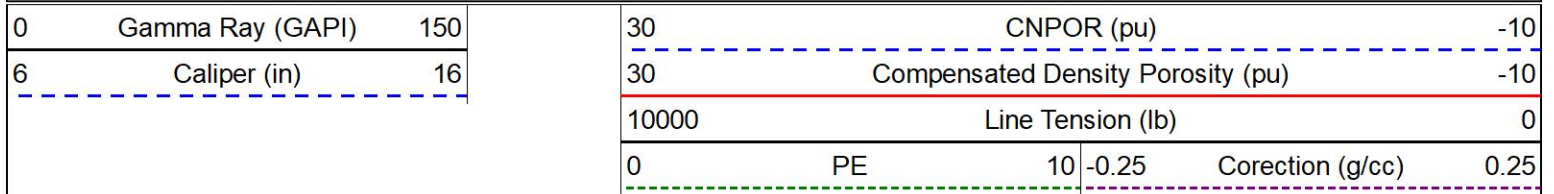


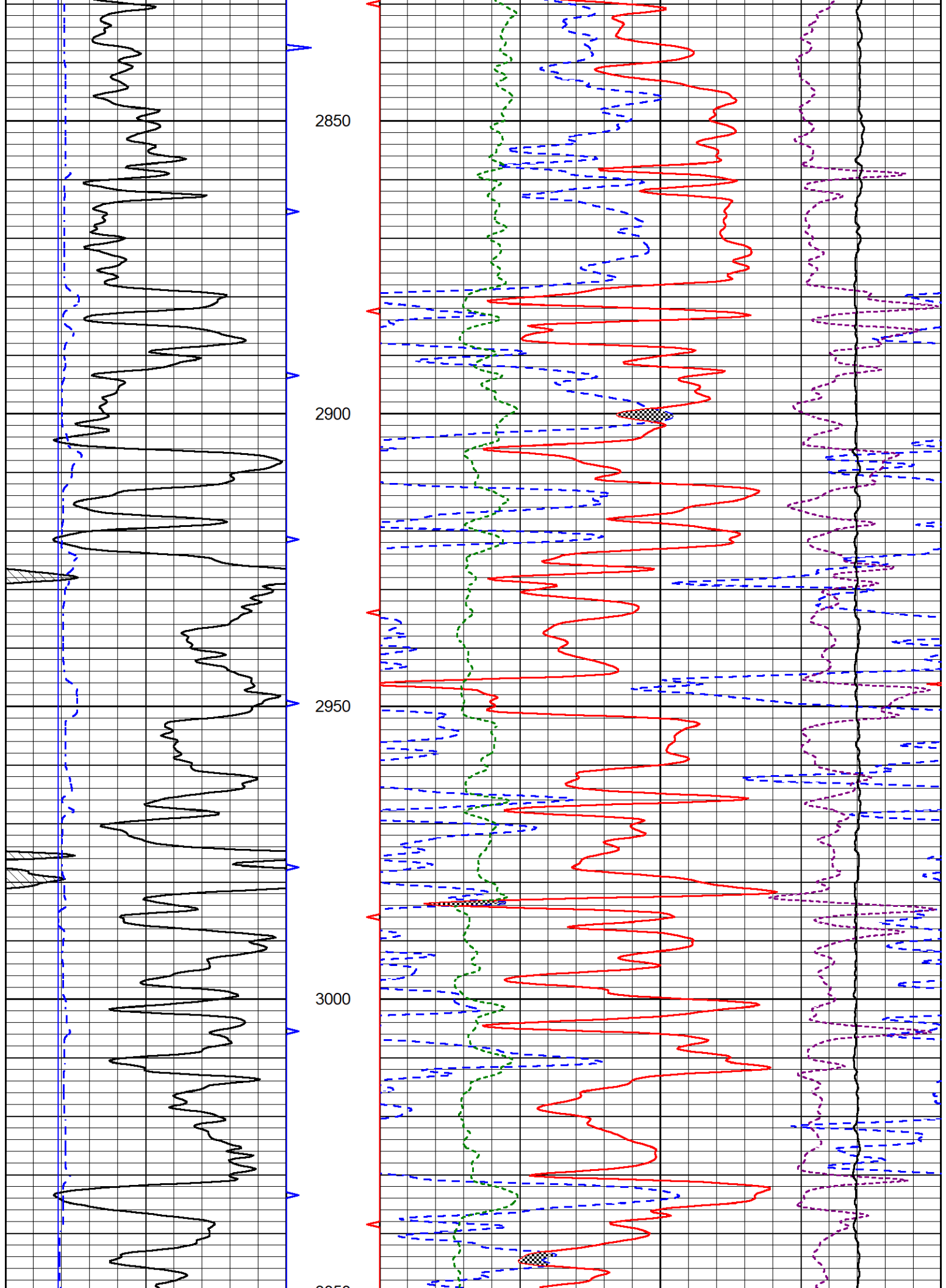


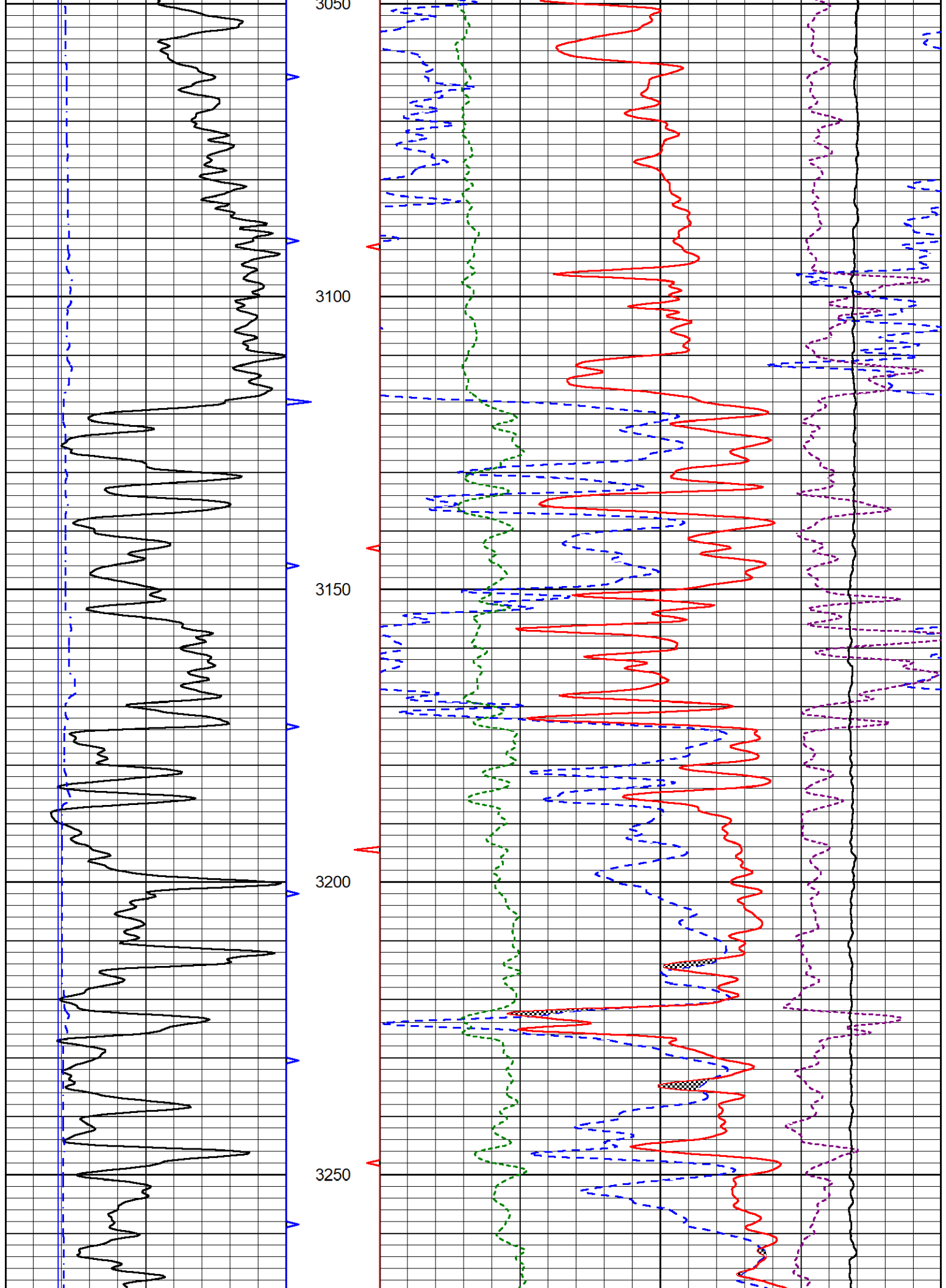
# DETAIL SECTION

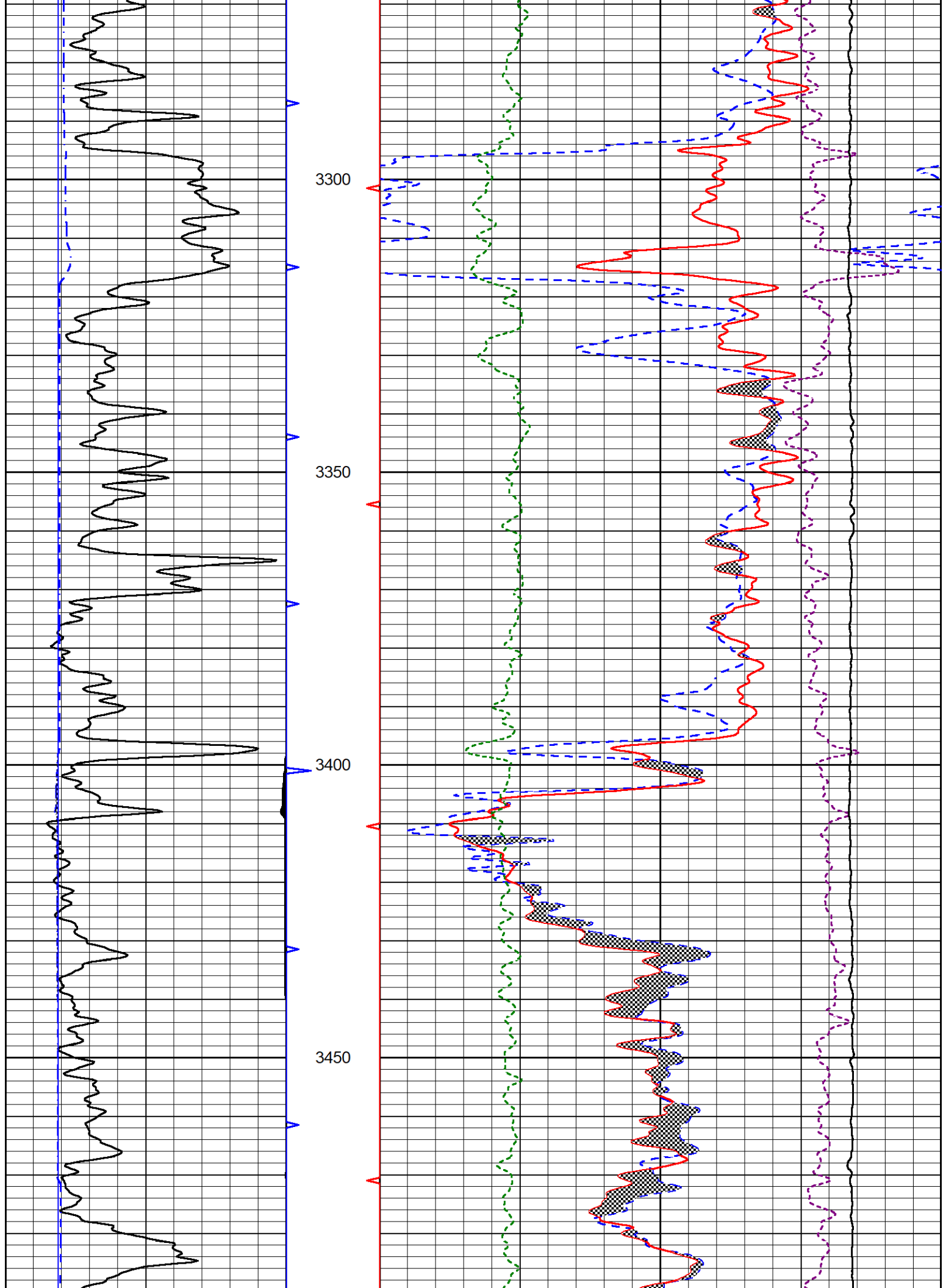
## MAIN PASS

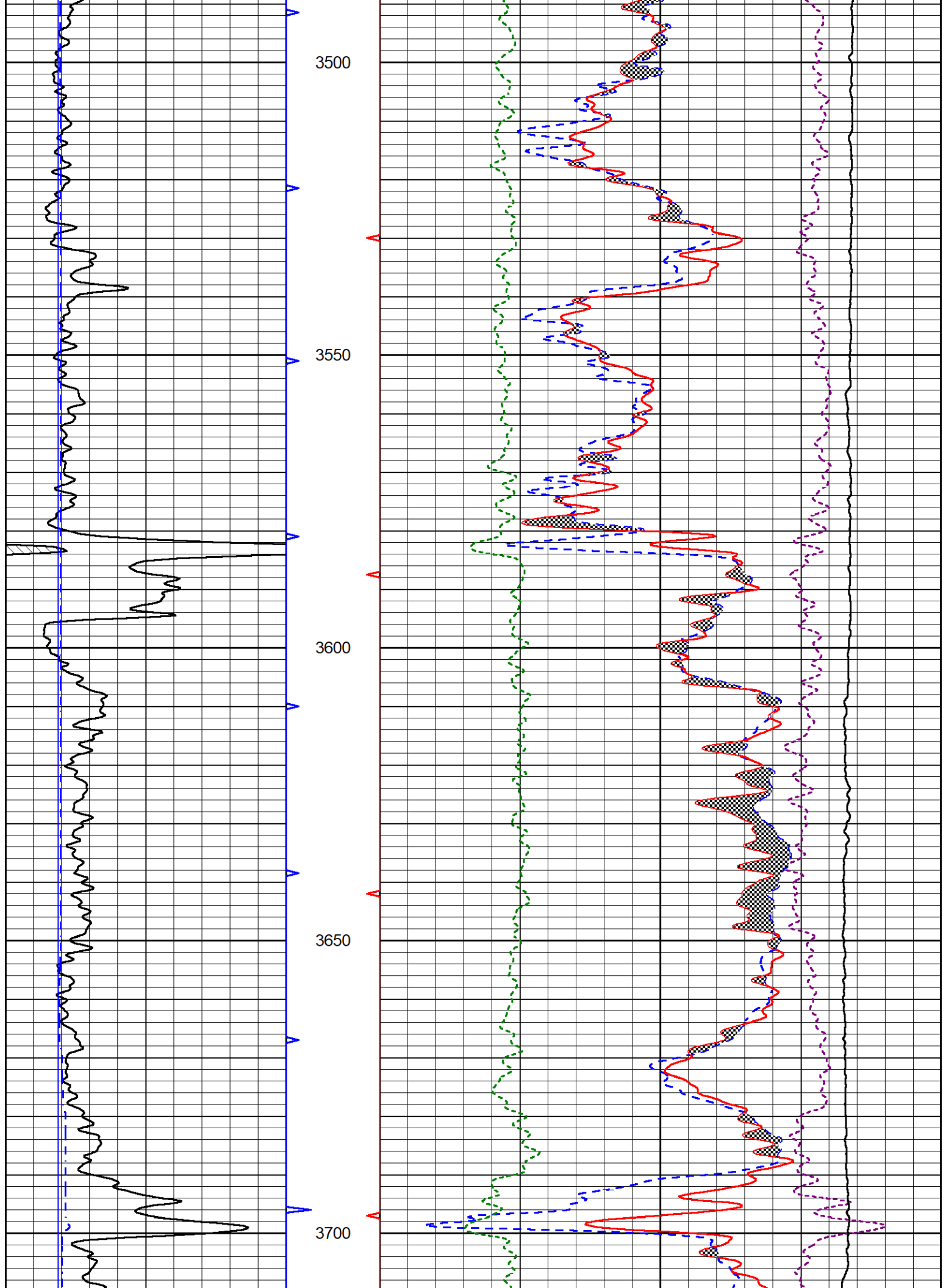
Database File griffin\_jenna\_#1.db  
 Dataset Pathname stackml/pass3.1  
 Presentation Format \_CNDLS~4  
 Dataset Creation Tue Aug 26 02:26:08 2025  
 Charted by Depth in Feet scaled 1:240

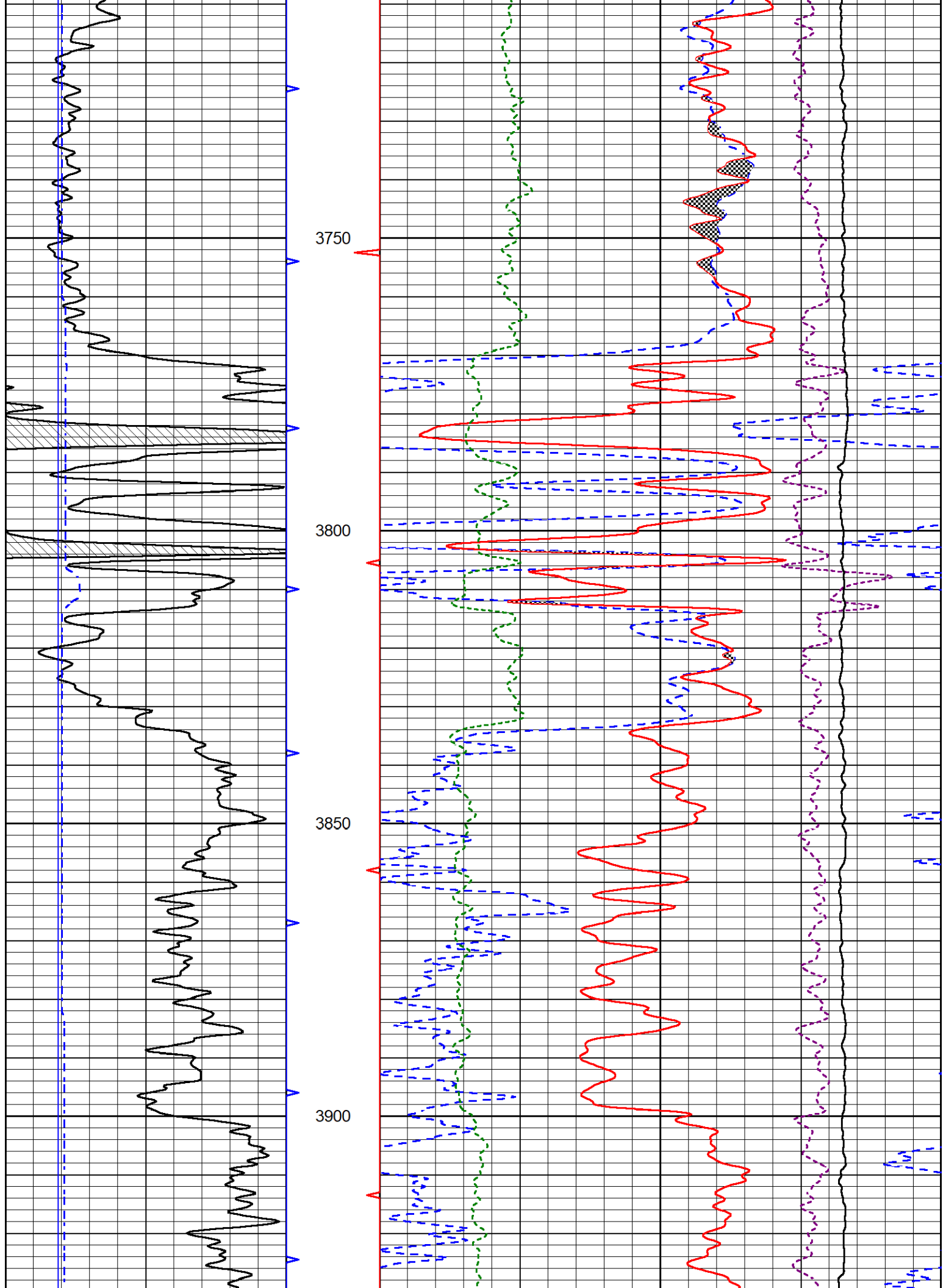


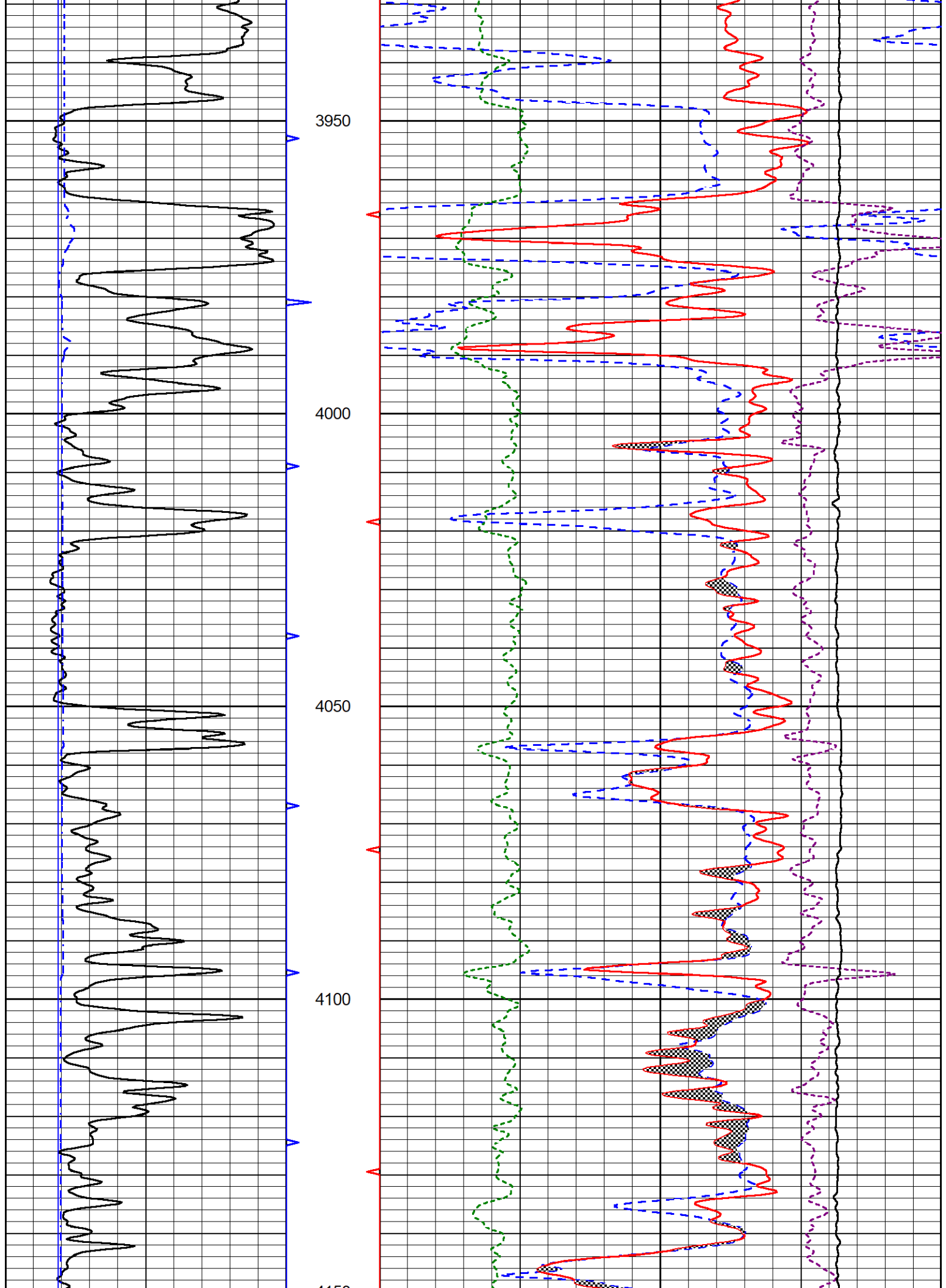


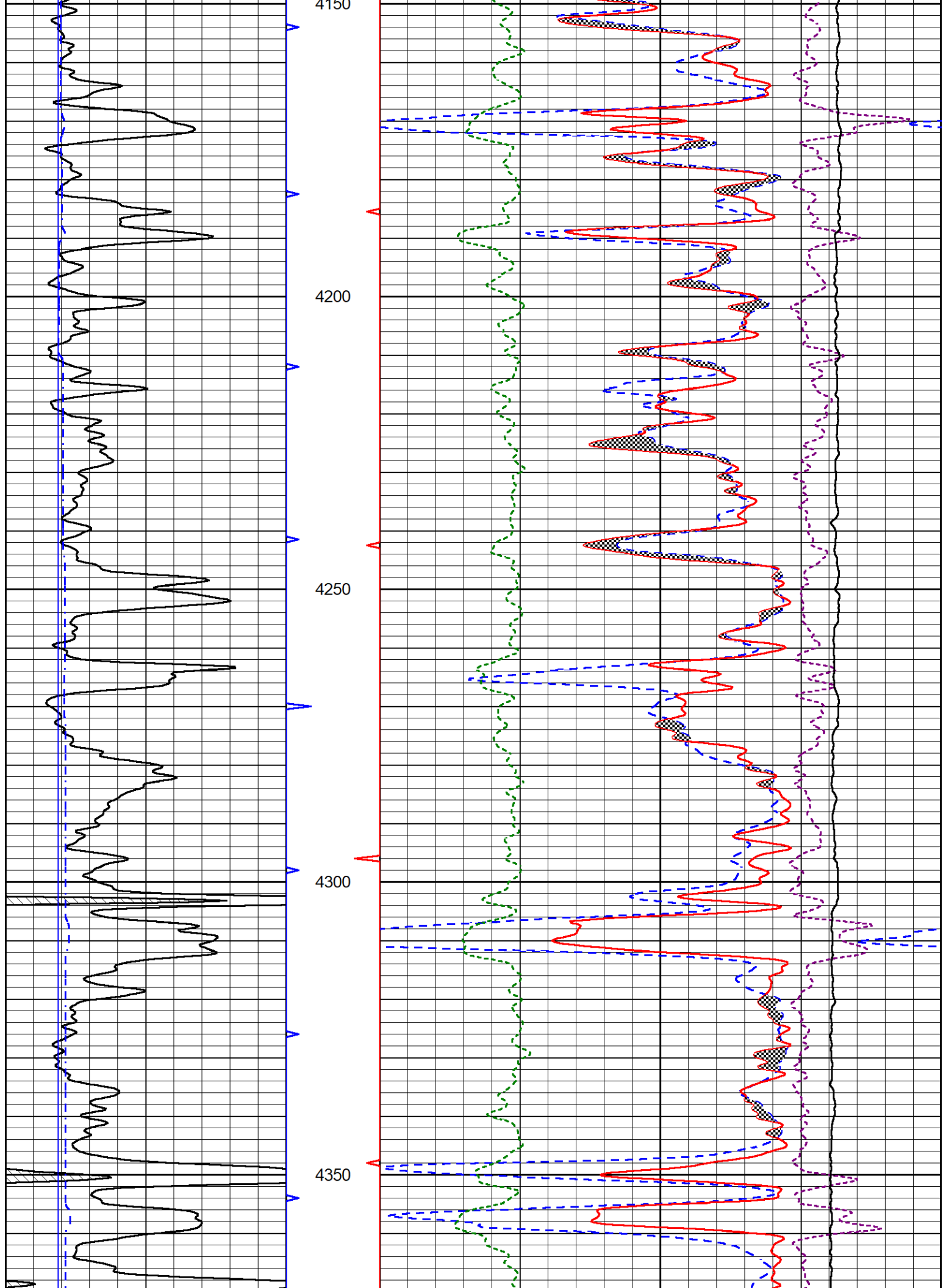


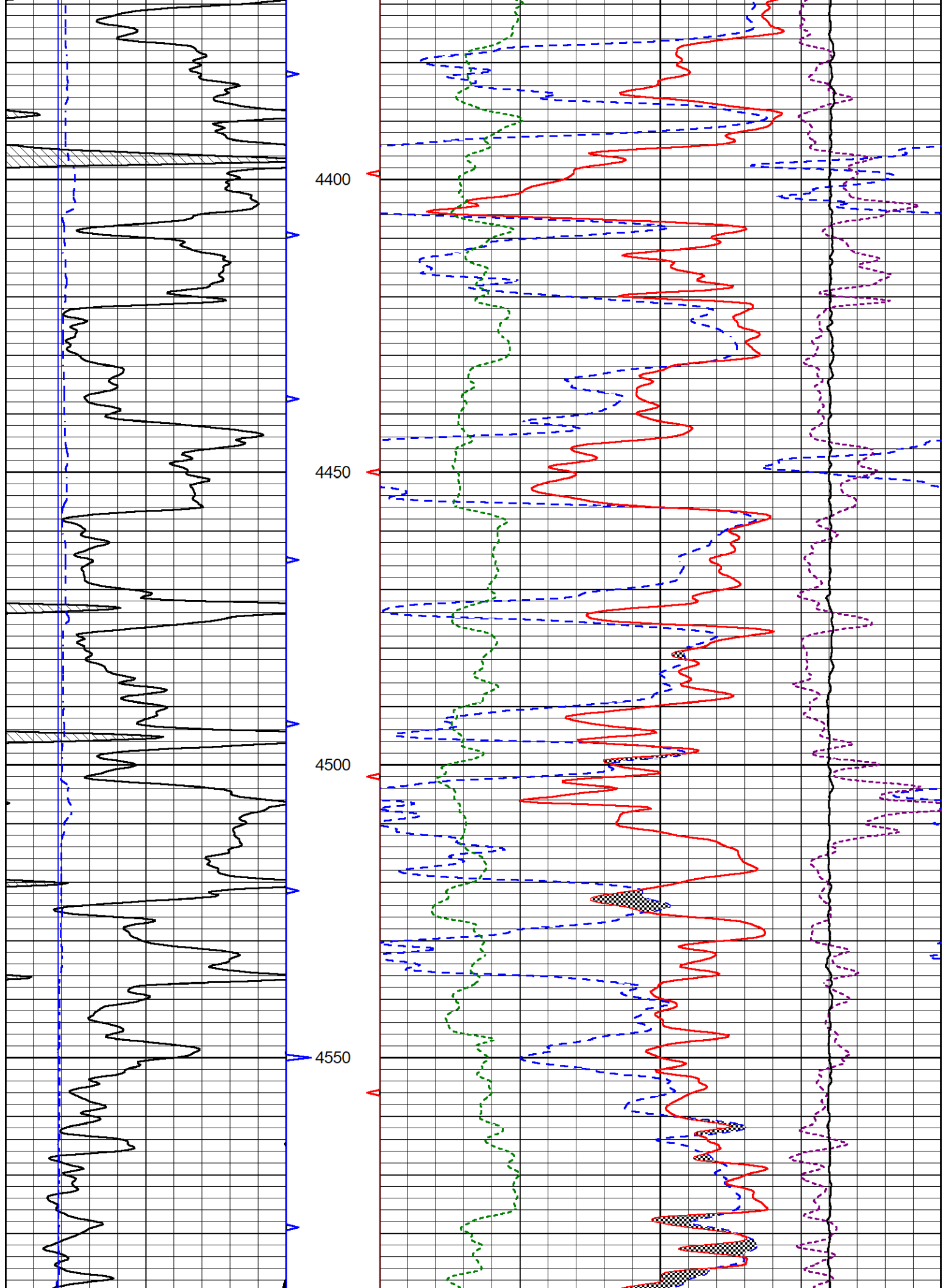


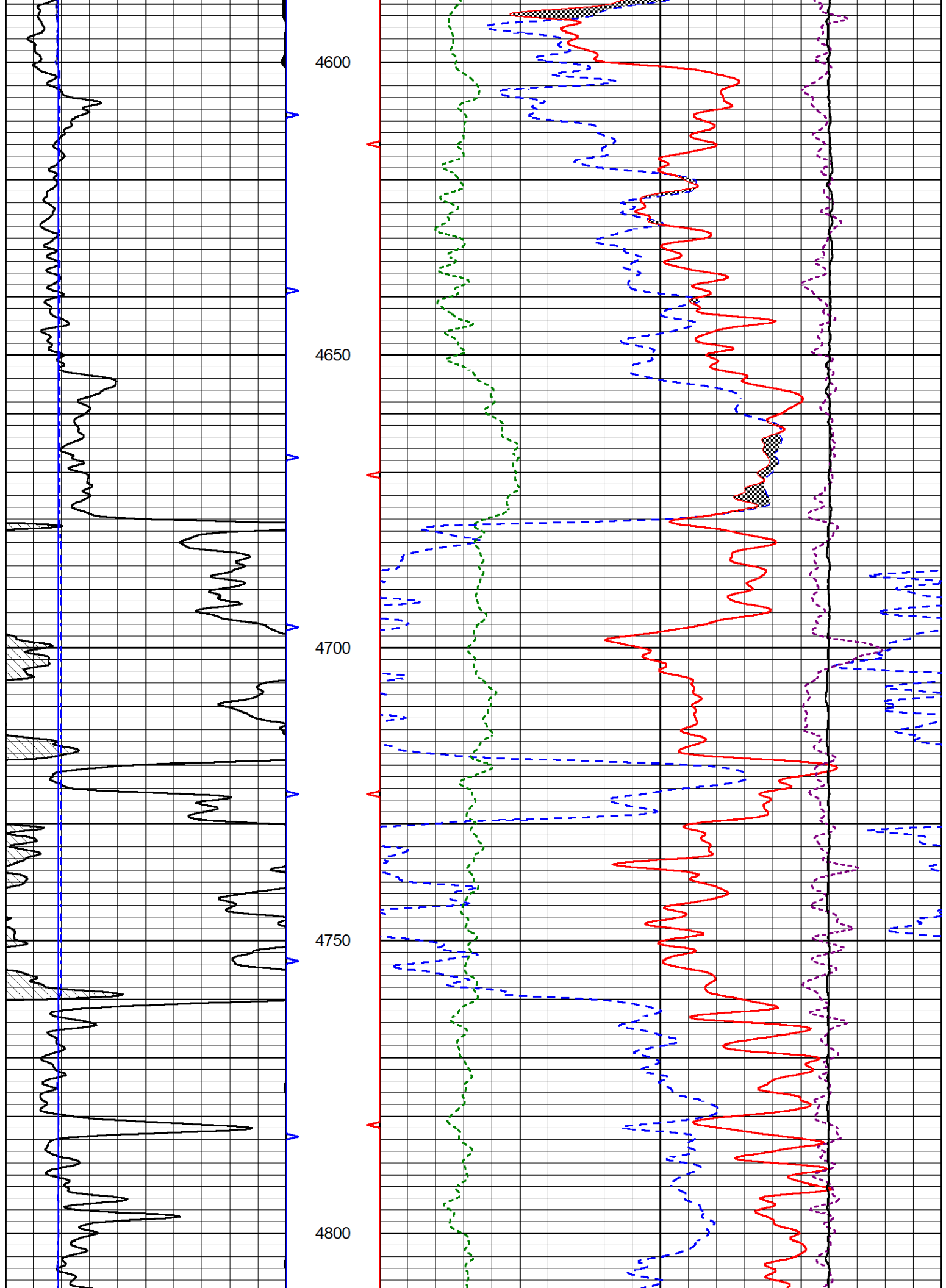


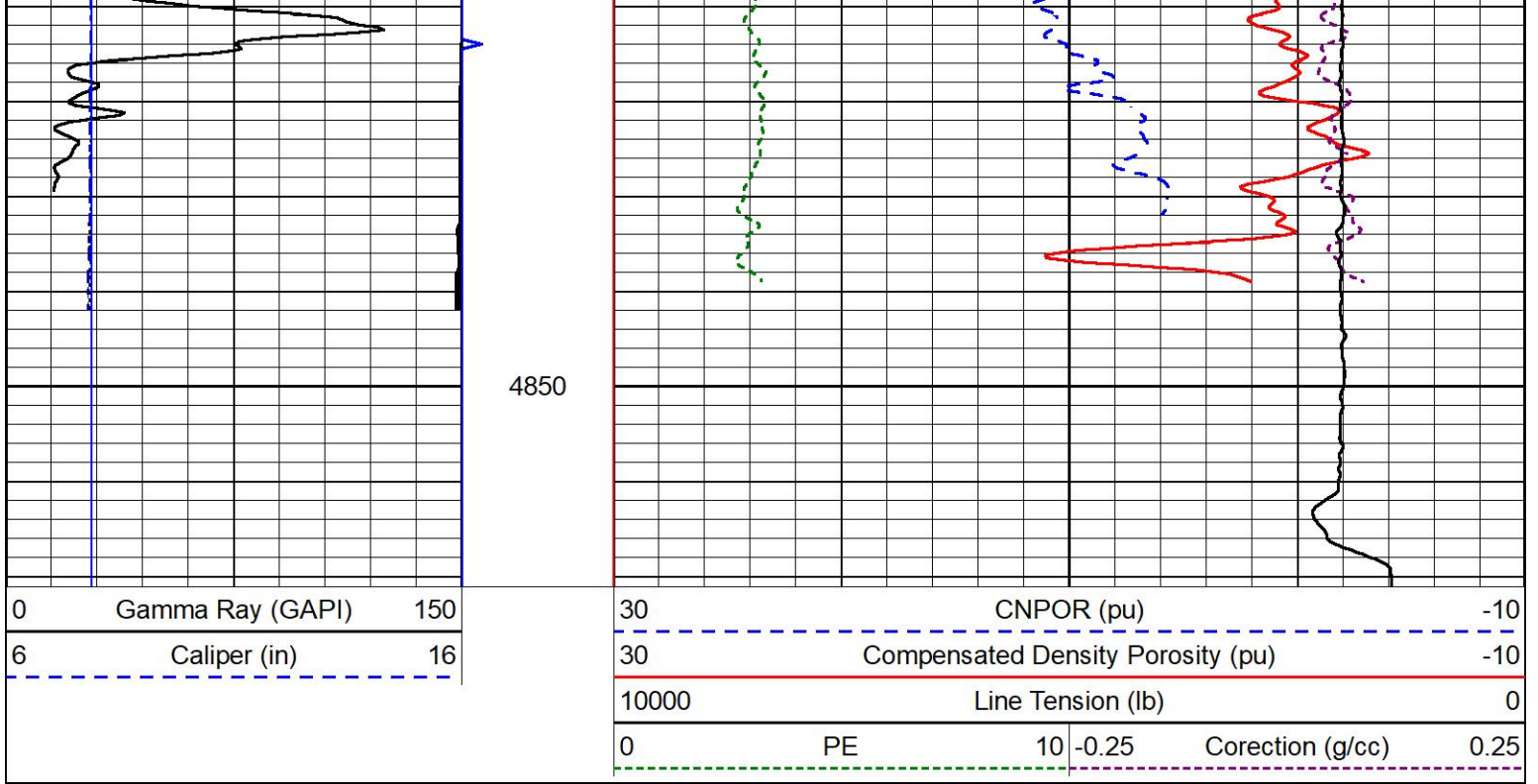








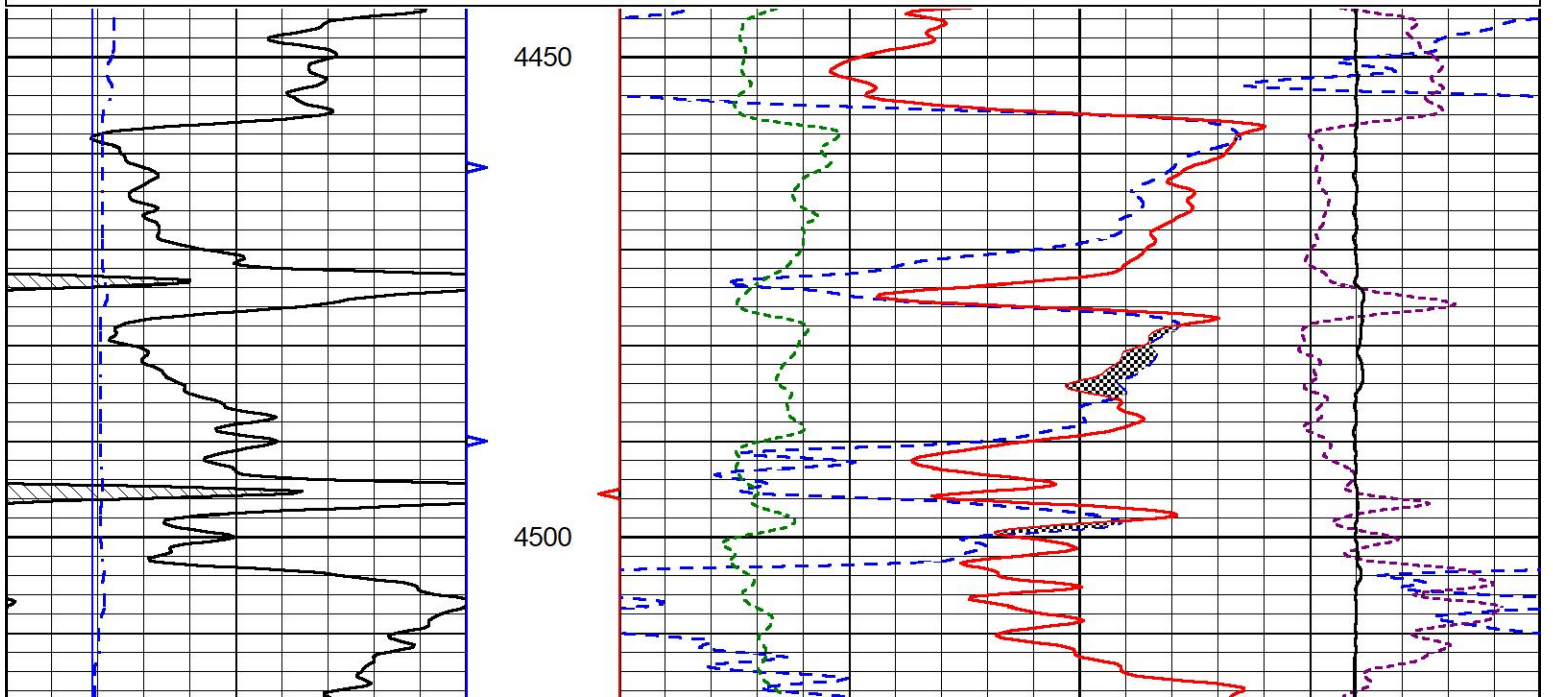
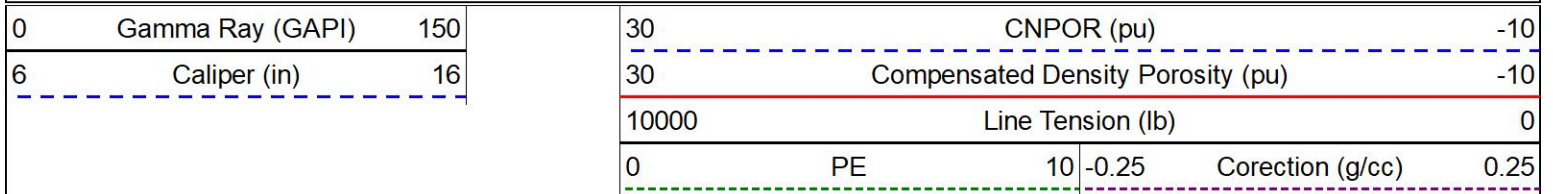


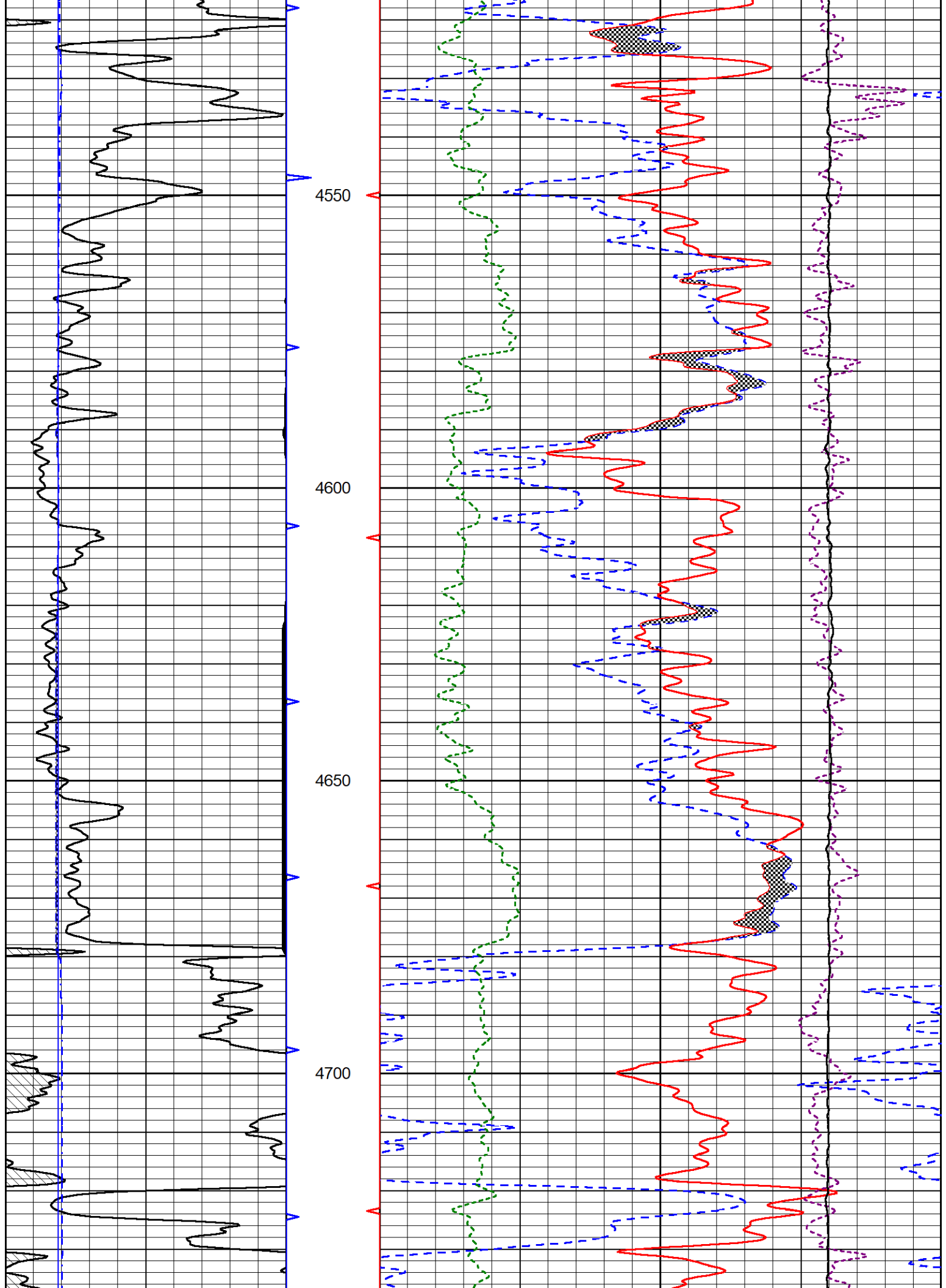


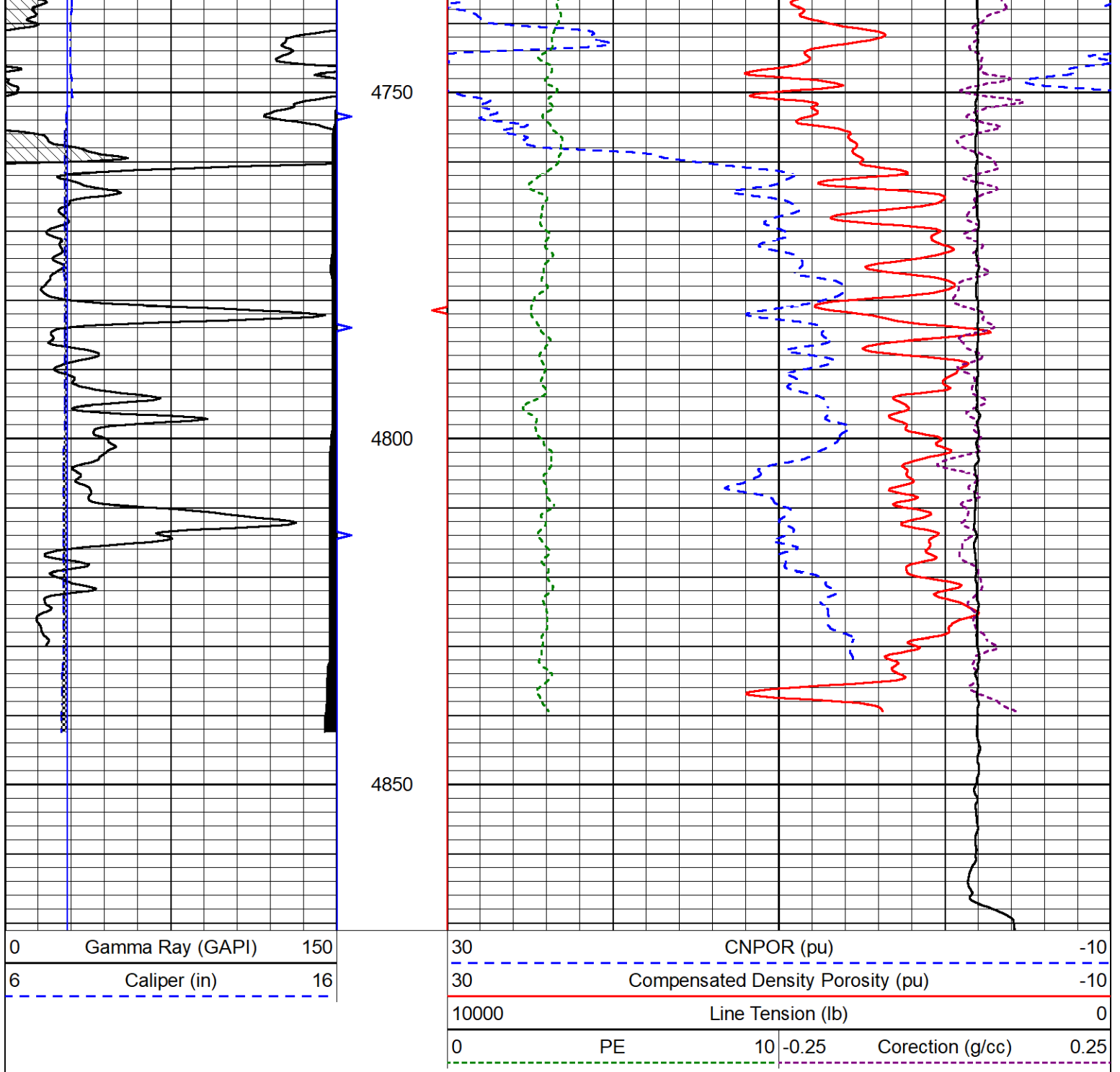
# REPEAT SECTION

## REPEAT PASS

Database File griffin\_jenna\_#1.db  
 Dataset Pathname stackml/pass2.1  
 Presentation Format \_CNDLS~4  
 Dataset Creation Tue Aug 26 02:22:16 2025  
 Charted by Depth in Feet scaled 1:240







### Calibration Report

Database File griffin\_jenna\_#1.db  
 Dataset Pathname stackml/pass3.1  
 Dataset Creation Tue Aug 26 02:26:08 2025

### Dual Induction Calibration Report

Serial-Model: 507-M&W  
 Surface Cal Performed:

Loop:	Readings		References			Results	
	Air	Loop	Air	Loop	mmho/m	m	b
Deep	68.570	638.100	0.000	255.800	mmho/m	0.500	-37.000
Medium	184.288	716.191	0.000	255.800	mmho/m	0.450	-79.000

Microlog Calibration Report

Serial-Model: 401-PSIML  
 Performed: Fri May 23 17:57:51 2025

	Readings		References			Results	
	Zero	Cal	Zero	Cal		m	b
Normal	0.0000	1.0000	0.0000	1.0000	Ohm-m	11000.0000	0.0000
Inverse	0.0000	1.0000	0.0000	1.0000	Ohm-m	17000.0000	-0.6000
Caliper	1.0052	1.0858	5.0000	16.5000	in	85.0000	-79.7000

LITHODENSITY Calibration Report

Serial Number: 704-10  
 Tool Model: STEP LITHO  
 Performed: Tue Apr 15 14:57:15 2025

Source:

	Win1	Win2	Win3	Win4	Win5	Win6	Win7	Win8	
Background:									
SS:	52	55	204	256	22	72	46	0	cps
LS:	82	92	353	452	52	145	93	3	cps
Aluminum:									
SS:	1057	1257	2829	2441	41	72	47	2	cps
LS:	1112	1906	3597	1727	62	140	93	5	cps
Magnesium:									
SS:	1757	2019	4660	3565	49	72	49	4	cps
LS:	4717	7741	14082	5659	106	129	91	15	cps
Aluminum+Iron:									
SS:	665	880	2358	2103	40	75	48	2	cps
LS:	648	1367	3077	1554	58	139	94	5	cps

	Density Actual	Calibrated	PE Actual	Calibrated	Quality
Background:					
SS:					0.218
LS:					0.217
Aluminum:					
SS:	2.6000	2.6000	g/cc		0.207
LS:	2.6000	2.6000	g/cc		0.201
Magnesium:					
SS:	1.6800	1.6800	g/cc	2.5700	2.5700 0.185
LS:	1.6800	1.6800	g/cc	2.5700	2.5700 0.175
Aluminum+Iron:					
SS:				6.1800	0.217
LS:				6.1800	0.193

Before Survey									
Performed:	Wed Feb 9 13:15:42 2022								
SS:	0	0	0	0	0	0	0	0	cps
LS:	1370	1580	3705	3037	48	80	50	4	cps
After Survey									
Performed:	Wed Feb 9 13:16:02 2022								
SS:	0	0	0	0	0	0	0	0	cps
LS:	1400	1600	3800	3100	60	100	70	6	cps

Caliper:	Reference:	Reading:
Small Ring:	6.0 in	0.2
Large Ring:	16.0 in	0.8
Gain:	18.000	
Offset:	0.150	

Compensated Neutron Calibration Report

Serial Number: 201-M&W  
 Tool Model: M&W

CALIBRATION

Detector	Readings	Target	Normalization
Short Space	6240.00 cps	1000.00 cps	1.6025
Long Space	460.00 cps	1000.00 cps	1.9500

PRE-SURVEY VERIFICATION

Detector	Readings	Measured	Target
1) Short Space	cps		
Long Space	cps	pu	pu
2) Short Space	cps		
Long Space	cps	pu	
3) Short Space	cps		
Long Space	cps	pu	

POST-SURVEY VERIFICATION

Detector	Readings	Measured	Target
1) Short Space	cps		
Long Space	cps	pu	pu
2) Short Space	cps		
Long Space	cps	pu	pu
3) Short Space	cps		
Long Space	cps	pu	pu

Gamma Ray Calibration Report

Serial Number: 105  
 Tool Model: M&W  
 Performed: Mon Aug 7 20:46:01 2023

Calibrator Value: 500.0 GAPI

Background Reading: 24.0 cps  
 Calibrator Reading: 637.0 cps

Sensitivity: 0.6000 GAPI/cps



Company Griffin Management, LLC  
 Well Jenna #1  
 Field Turkey Creek East  
 County Barber  
 State Kansas