



MIDWEST WIRELINE

MICRORESISTIVITY

Company Griffin Management, LLC
 Well Jenna #1
 Field Turkey Creek East
 County Barber
 State Kansas

Company Griffin Management, LLC
 Well Jenna #1
 Field Turkey Creek East
 County Barber State Kansas

Location: API #: 15-007-24513-00-00
 E2 NW SW SE
 990 FSL & 2300 FEL
 SEC 16 TWP 30S RGE 15W
 Permanent Datum Ground Level Elevation 1875
 Log Measured From Kelly Bushing
 Drilling Measured From Kelly Bushing
 Other Services
 CNL/CDL
 DIL
 Elevation
 K.B. 1880
 D.F.
 G.L. 1875

Date	8/25/2025
Run Number	One
Depth Driller	4864
Depth Logger	4866
Bottom Logged Interval	4865
Top Log Interval	2800
Casing Driller	8.625 @ 1018
Casing Logger	1016
Bit Size	7.875
Type Fluid in Hole	Chemical
Salinity, ppm CL	6000
Density / Viscosity	9.4 48
pH / Fluid Loss	9.5 10.2
Source of Sample	Flowline
Rm @ Meas. Temp	1.20 @ 76
Rmt @ Meas. Temp	0.90 @ 76
Rmc @ Meas. Temp	1.62 @ 76
Source of Rmf / Rmc	Charts
Rm @ BHT	0.73 @ 125
Operating Rig Time	3 Hrs
Max Rec. Temp. F	125
Equipment Number	P-24
Location	Hays
Recorded By	M. Hiss / T. Martin
Witnessed By	Eli Felts

<<< Fold Here >>>

All interpretations are opinions based on inferences from electrical or other measurements and Midwest Wireline LLC cannot and does not guarantee the accuracy or correctness of any interpretation, and Midwest Wireline LLC will not be liable or responsible for any loss, costs, damages, or expenses incurred or sustained by anyone resulting from any interpretation made by any of our officers, agents or employees.

Comments

N/A DENOTES NOT AVAILABLE OR NON-APPLICABLE.

Coats KS, South to 110 rd, 1 East, South Into.

Log Measured From: Kelly Bushing 5 Ft. Above Permanent Datum

THANK YOU FOR USING MIDWEST WIRELINE LLC
 785-625-3858

Your Midwest Wireline Crew

Engineer: M. Hiss / T. Martin
 Operator:
 Operator:
 Operator:

This Log Record Was Witnessed By

Primary Witness: Eli Felts
 Secondary Witness:
 Secondary Witness:
 Secondary Witness:

Sensor	Offset (ft)	Schematic	Description	Length (ft)	O.D. (in)	Weight (lb)	
GR	40.75		GR-M&W (105)	3.00	3.50	50.00	
CNLSC CNSSC	37.65 36.90		CNT-M&W (201-M&W)	5.00	3.50	100.00	
				MWLith-STEP LITHO (704-10) Long Litho Mandrel	8.92	5.00	250.00
LCAL	28.21						
LLW8N	28.21						
LLW7N	28.21						
LLW6N	28.21						
LLW5N	28.21						
LLW4N	28.21						
LLW3N	28.21						
LLW2N	28.21			ML-PSIML (401)	7.58	4.00	65.00
LLW1N	28.21						
LSLOCK	27.96						
LLLOCK	27.96						
PELTMPR	27.96						
LSHVNG	27.96						
LLHVNG	27.96						
LSW8N	27.71						
LSW7N	27.71						
LSW6N	27.71						
LSW5N	27.71						
LSW4N	27.71						
LSW3N	27.71						
LSW2N	27.71						
LSW1N	27.71						
MCAL	19.58		DIL-M&W (507)	18.25	3.50	220.00	
MI	19.58						
MN	19.58						
RLL3F	15.50						
RLL3	15.50						
CILD	8.33						
CILM	4.50						
SP	0.20						

Dataset: griffin_jenna_#1.db: field/well/stackml/pass3.1
 Total length: 42.75 ft
 Total weight: 685.00 lb
 O.D.: 5.00 in

Log Variables

DatabaseC:\ProgramData\Warrior\Data\griffin_jenna_#1.db
 Dataset field/well/stackml/pass3.1/_vars_

Top - Bottom

A	BOREID in	BOTTEMP degF	CASEOD in	CASETHCK in	FLUIDDEN g/cc	M	MATRXDEN g/cc
1	7.875	125	5.5	0	1	2	2.71
NPORSEL	PERFS	SNDERR mmho/m	SNDERRM mmho/m	SPSHIFT mV	SRFTEMP degF	SZCOR	TDEPTH ft
Limestone	No	2.5	-6	640	70	Off	4866

Variable Description

A : Cement Factor (a)
 BOREID : Borehole I.D.
 BOTTEMP : Bottom Hole Temperature
 CASEOD : Casing O.D.
 CASETHCK : Casing Thickness
 FLUIDDEN : Fluid Density
 M : Cement Exp (m)
 MATRXDEN : Matrix Density

NPORSEL : Neutron Porosity Curve Select
 PERFS : Perforation Flag
 SNDERR : Deep Sonde Error Correction
 SNDERRM : Medium Sonde Error Correction
 SPSHIFT : S.P. Baseline Offset
 SRFTEMP : Surface Temperature
 SZCOR : CN Size Cor. ?
 TDEPTH : Total Depth



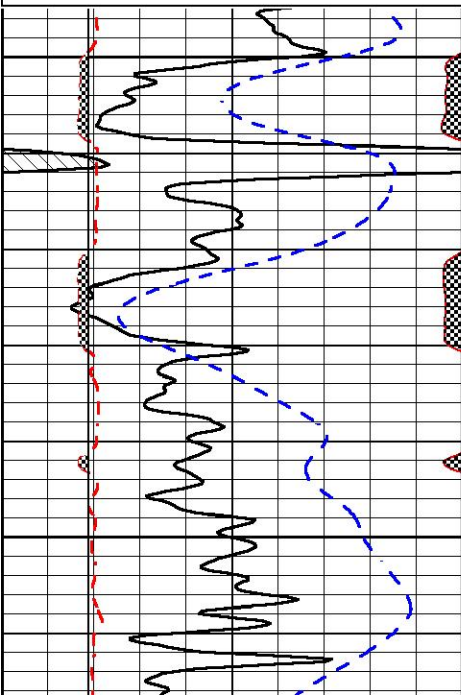
DETAIL SECTION

MAIN PASS

Database File griffin_jenna_#1.db
 Dataset Pathname stackml/pass3.1
 Presentation Format _micro
 Dataset Creation Tue Aug 26 02:26:08 2025
 Charted by Depth in Feet scaled 1:240

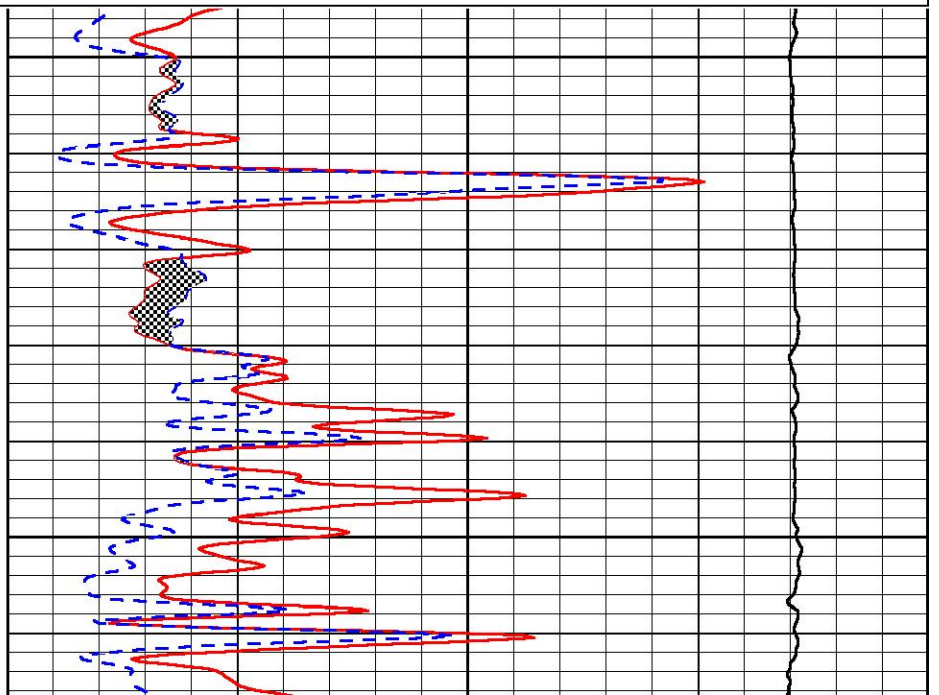
0	GR (GAPI)	150
6	Caliper (in)	16
2.875	mcal (in)	7.875
-200	sp (mV)	0

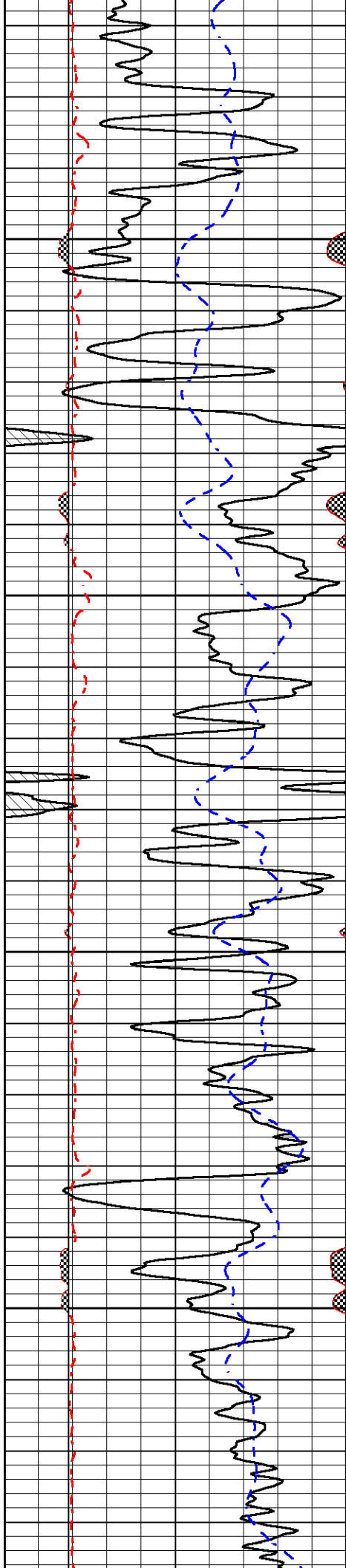
0	Micro Inverse 1 X 1 (Ohm-m)	40
0	Micro Normal 2" (Ohm-m)	40
10000	Line Weight (lb)	0



2800

2850



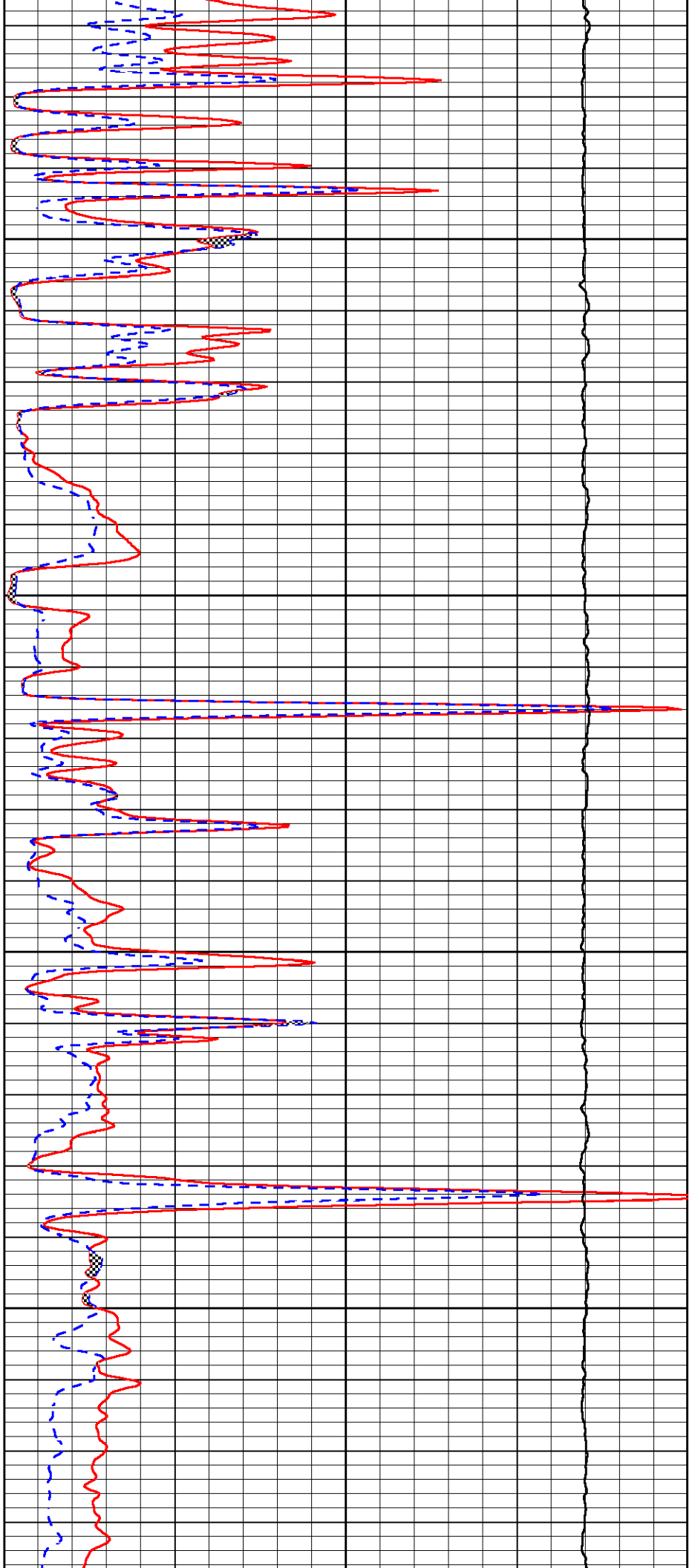


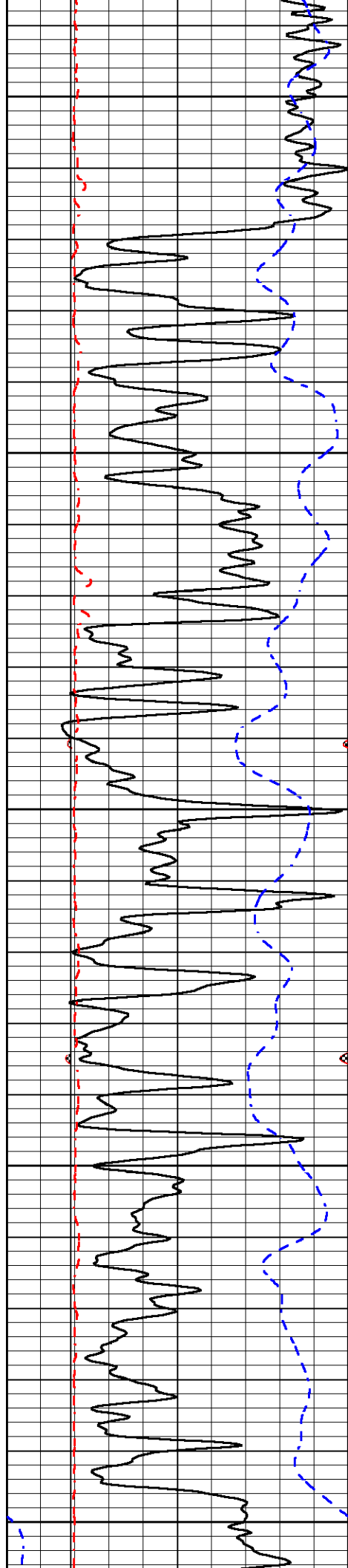
2900

2950

3000

3050





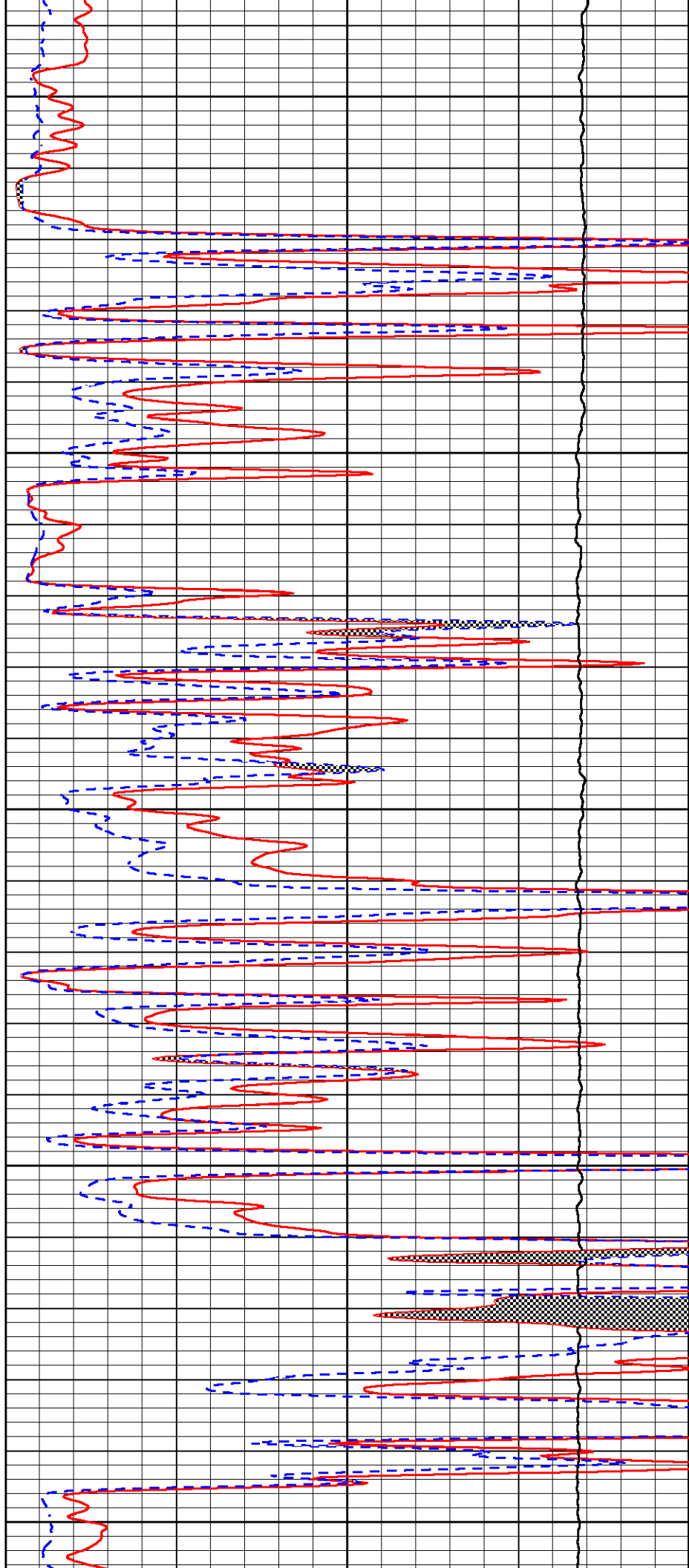
3100

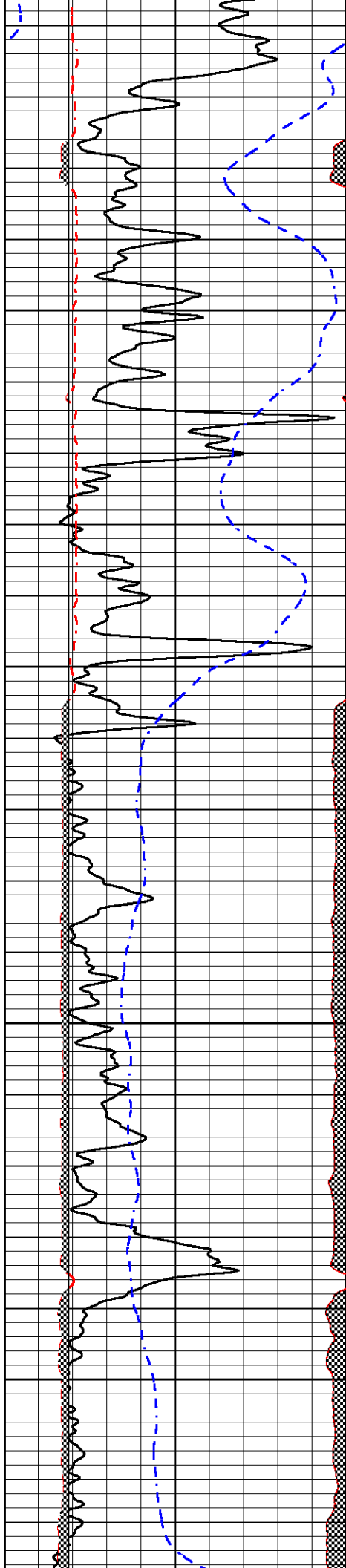
3150

3200

3250

3300



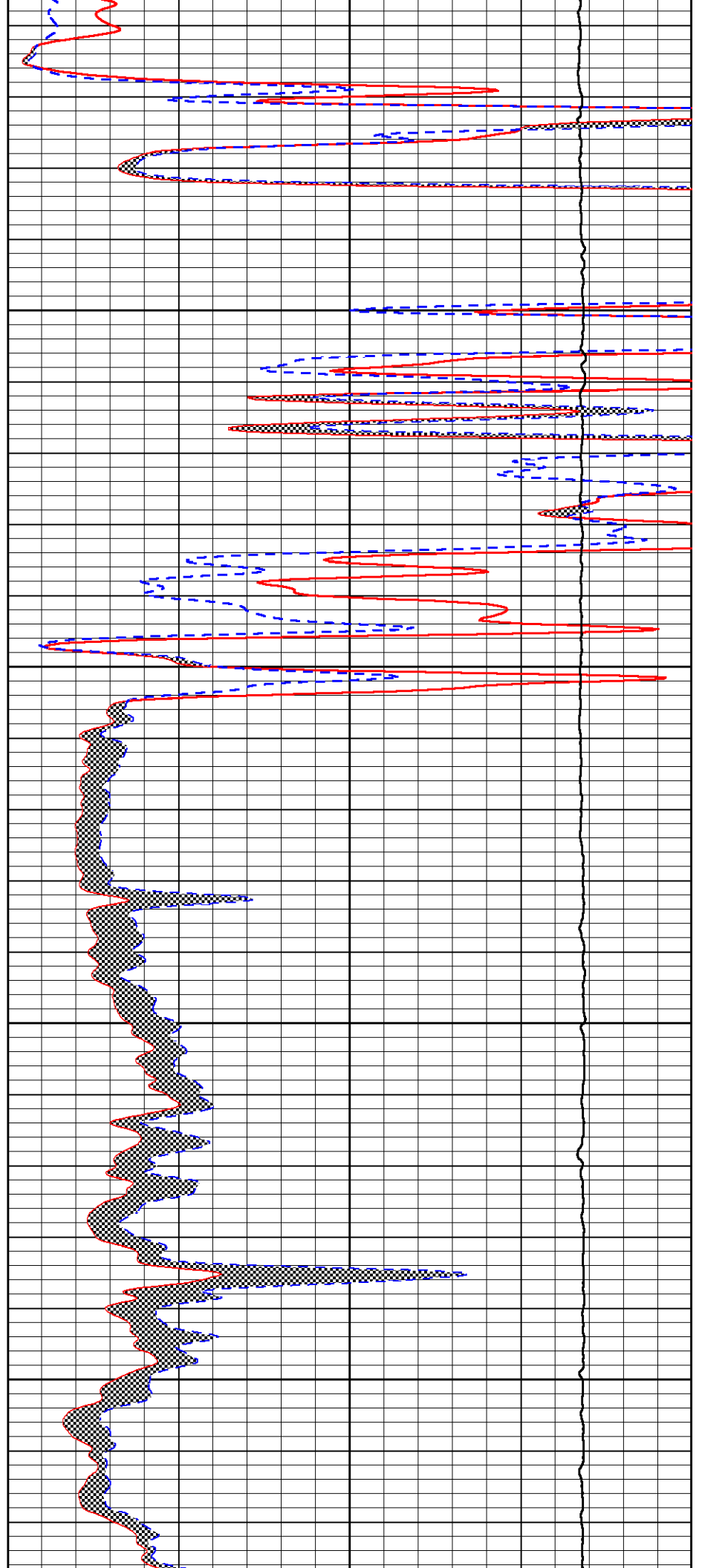


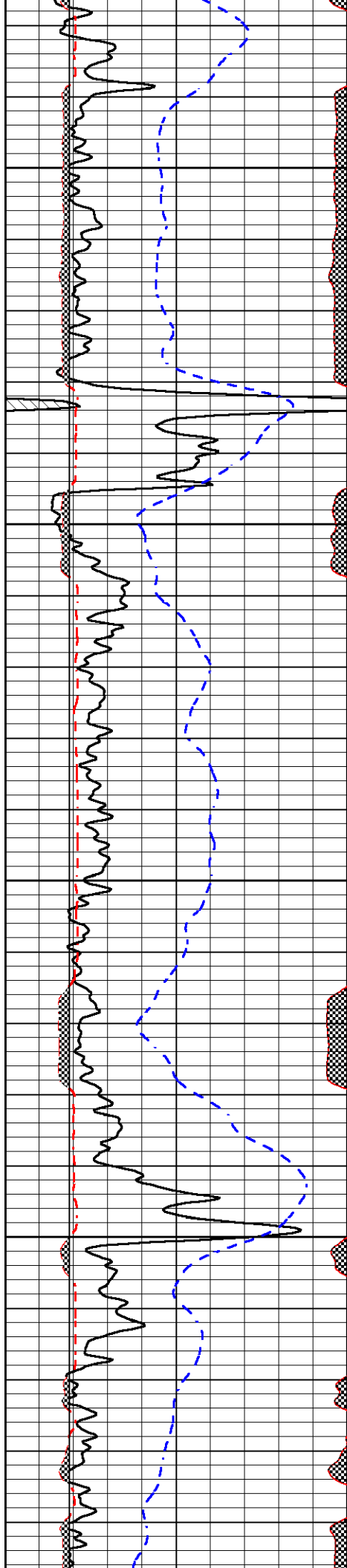
3350

3400

3450

3500



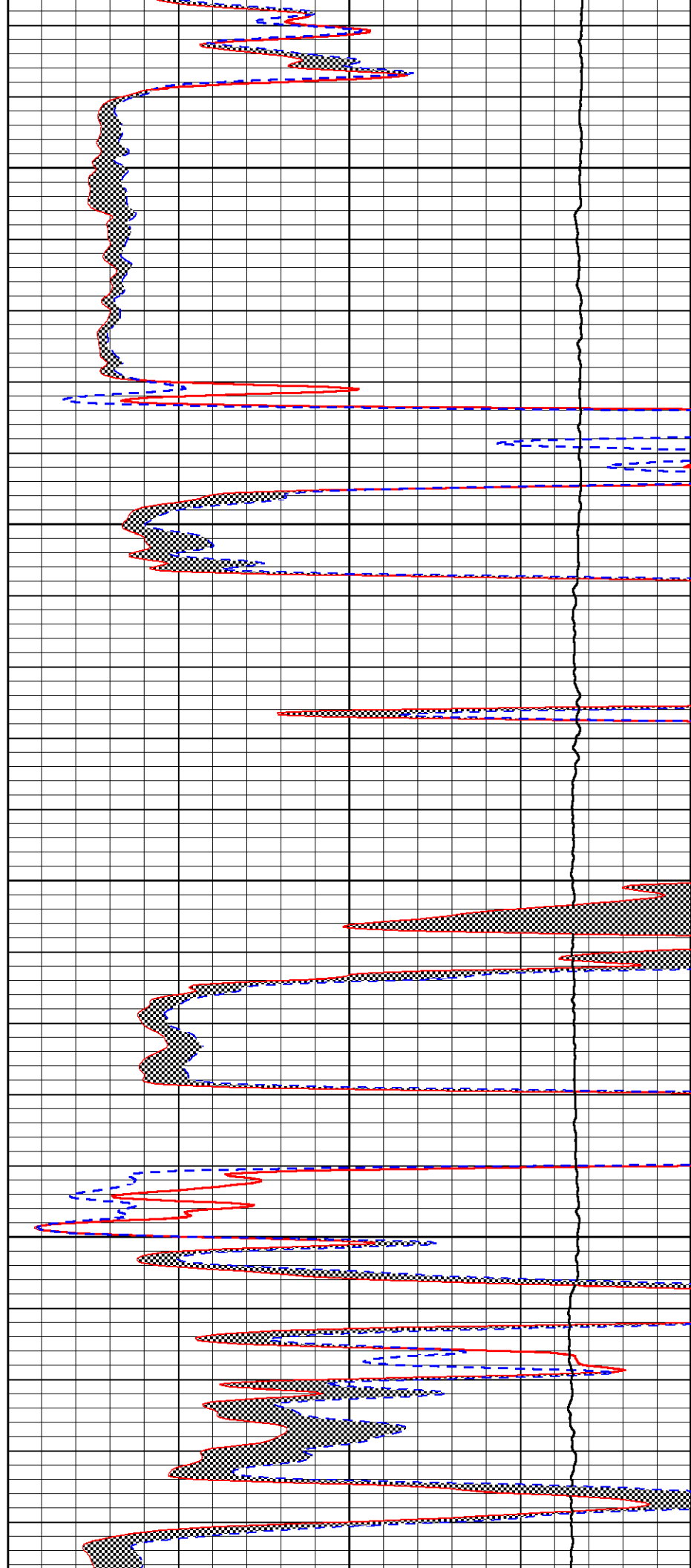


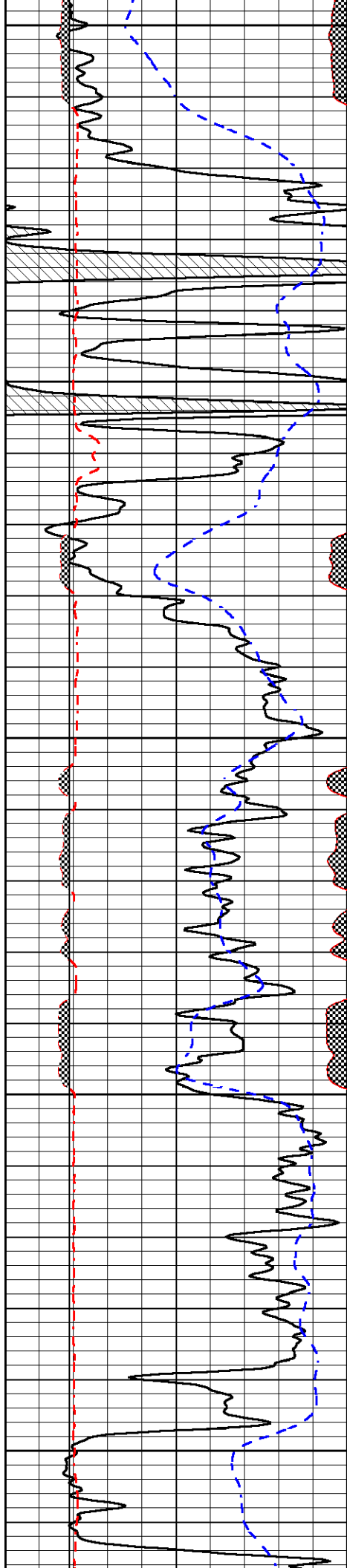
3550

3600

3650

3700





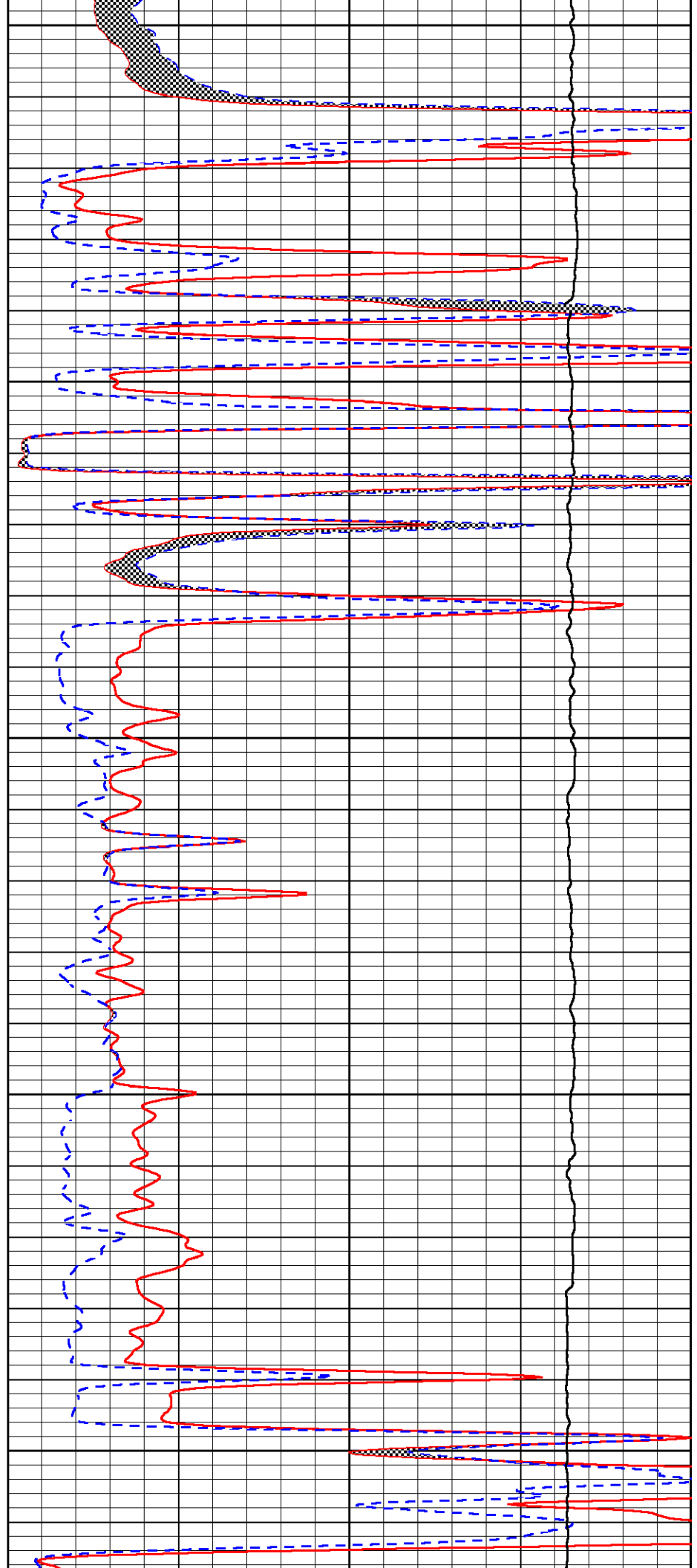
3750

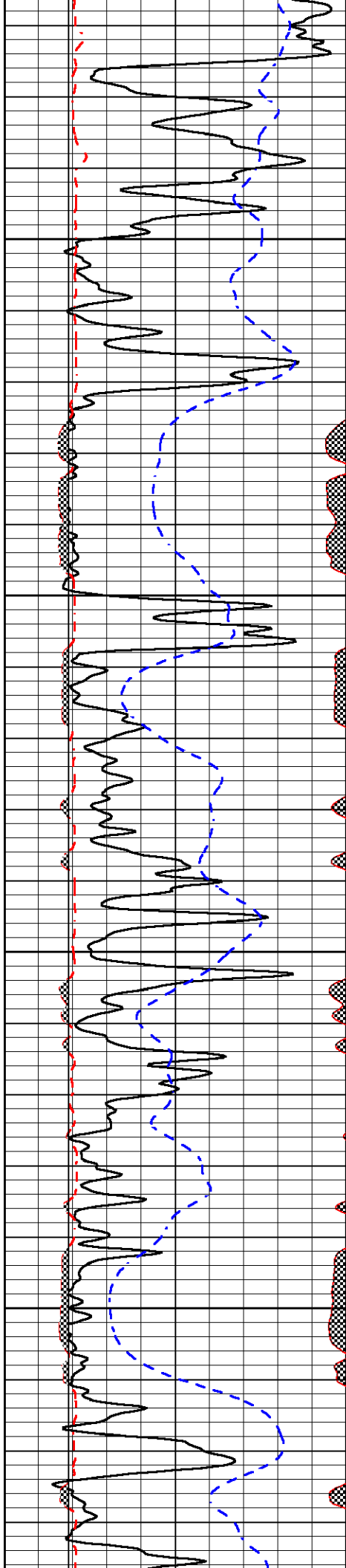
3800

3850

3900

3950



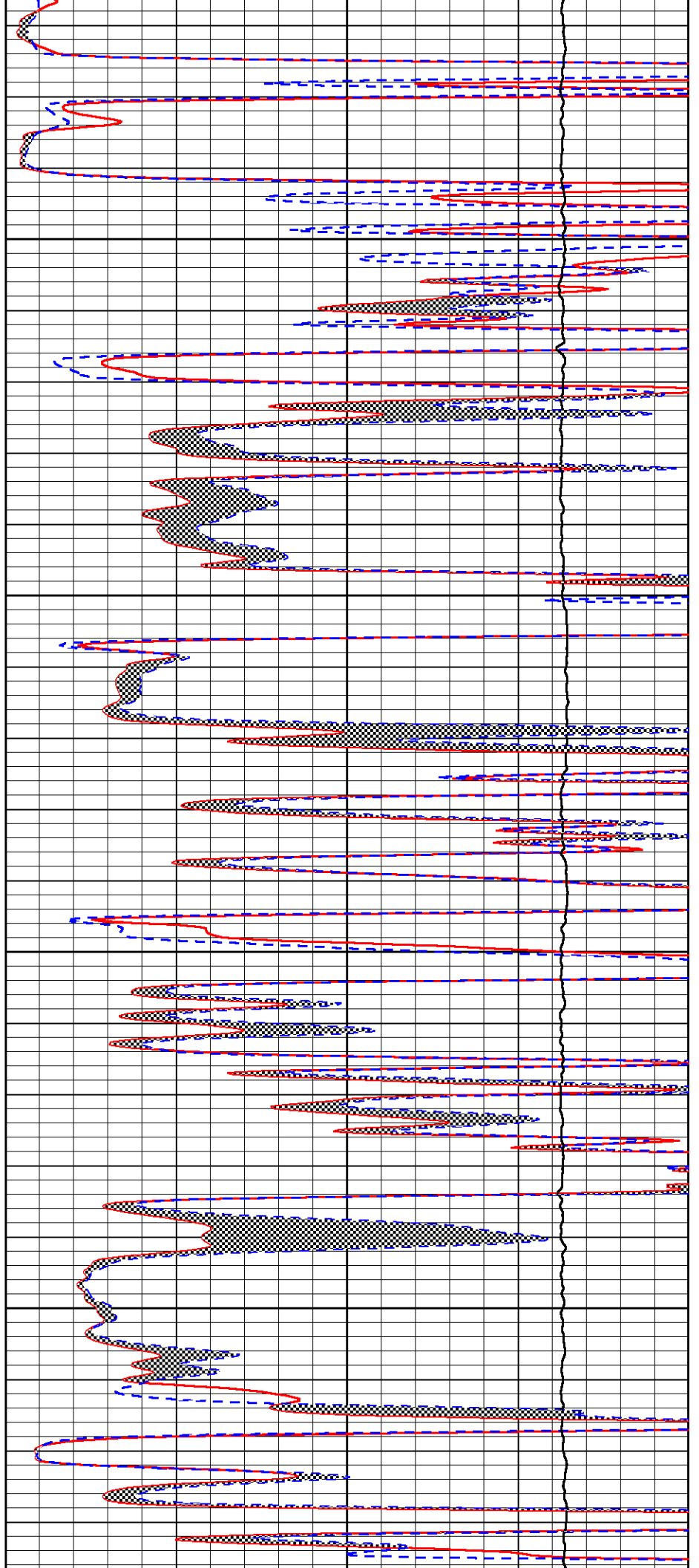


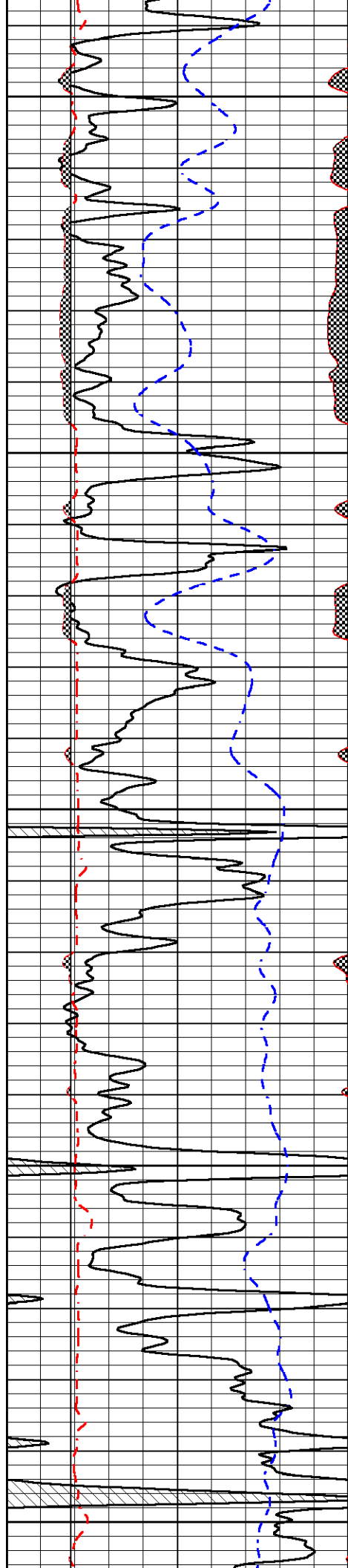
4000

4050

4100

4150





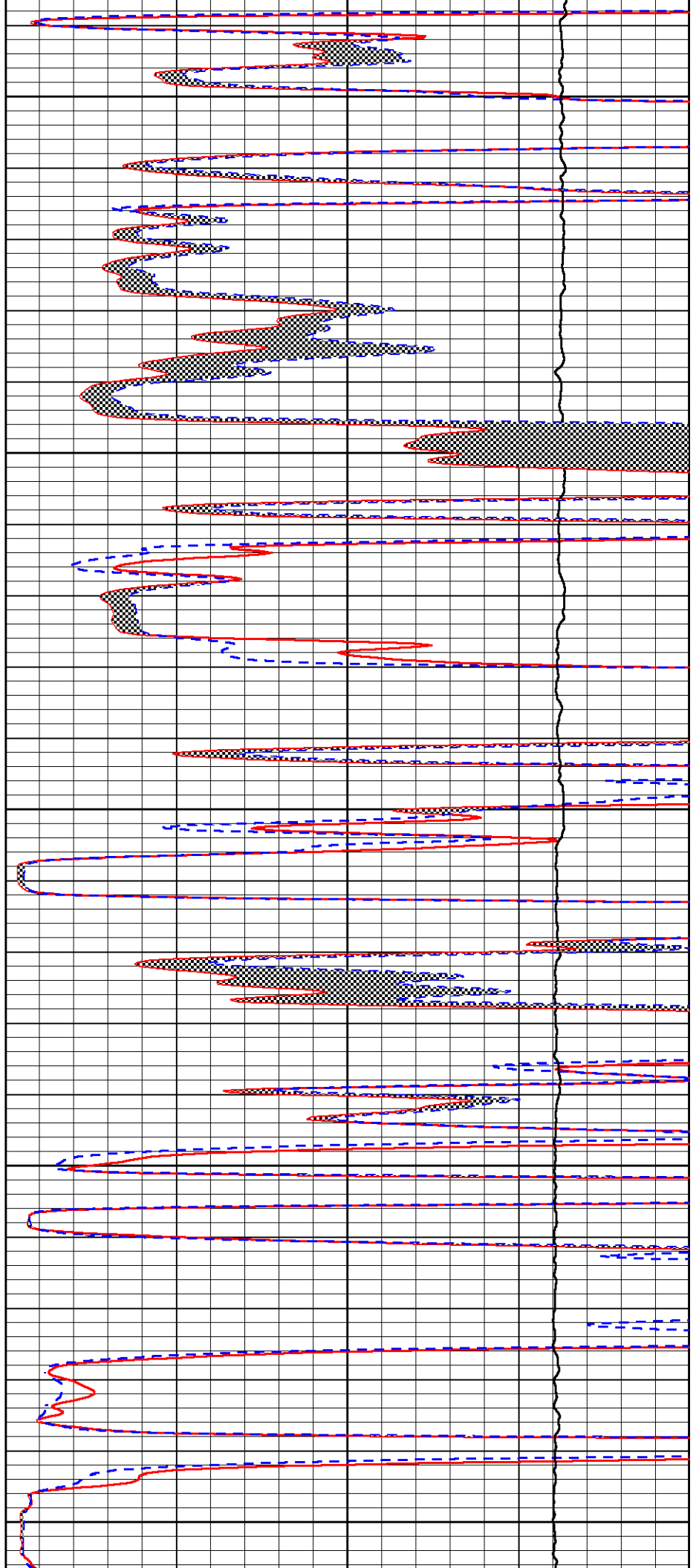
4200

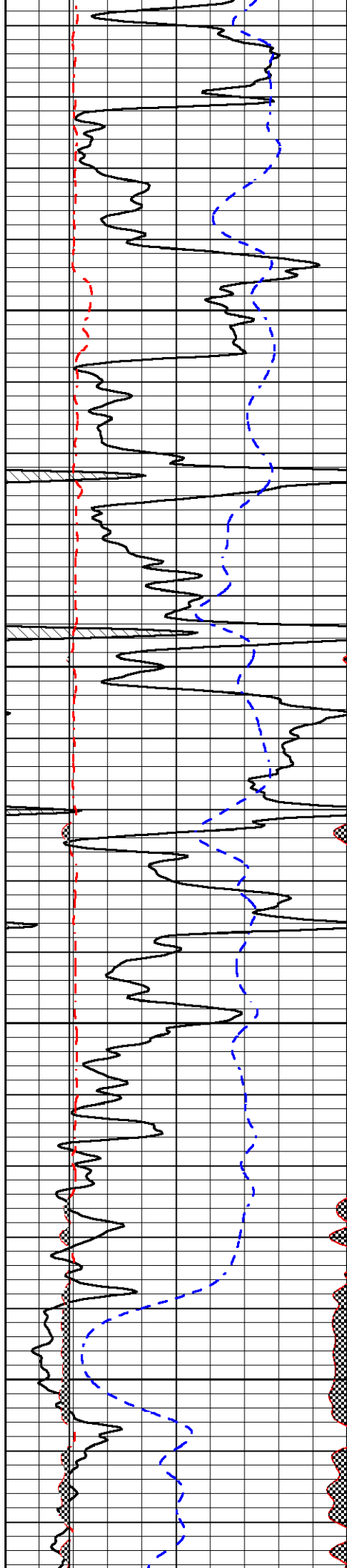
4250

4300

4350

4400



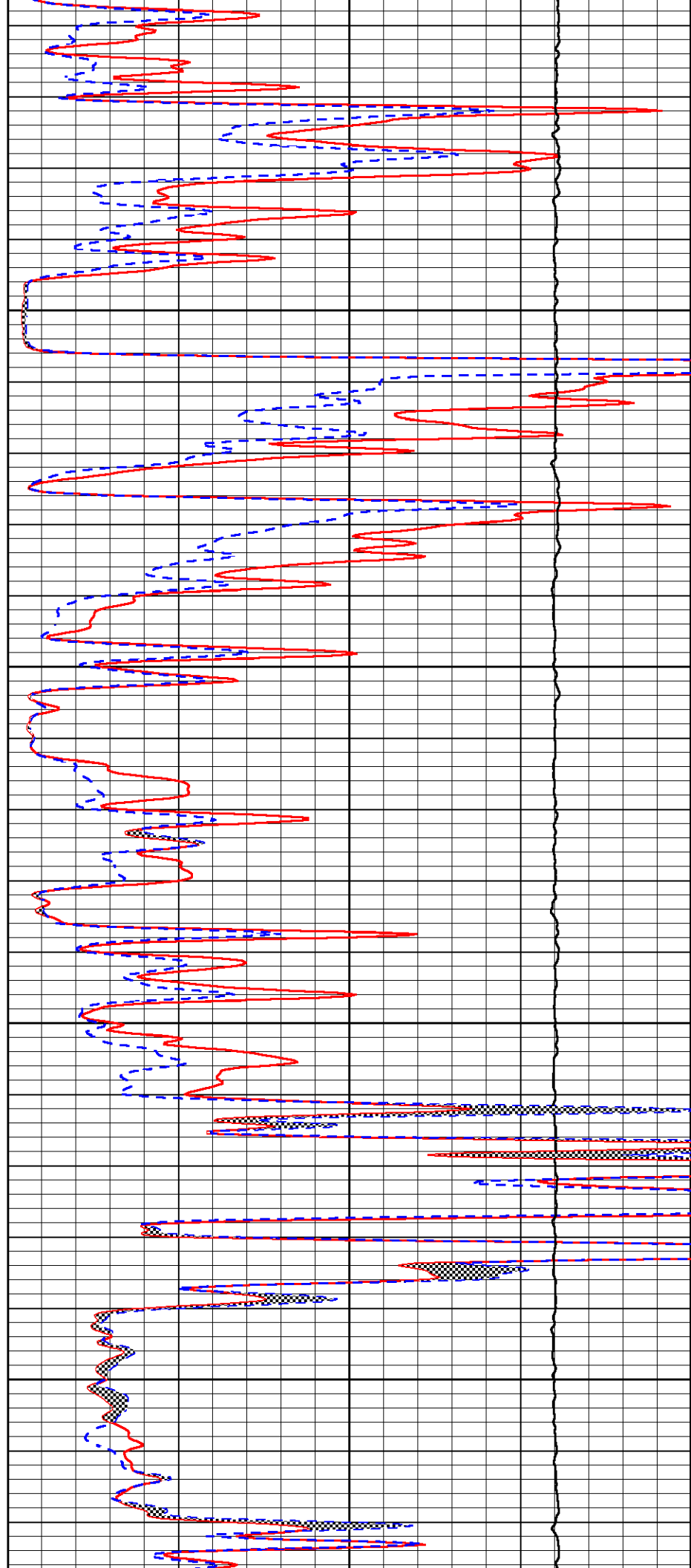


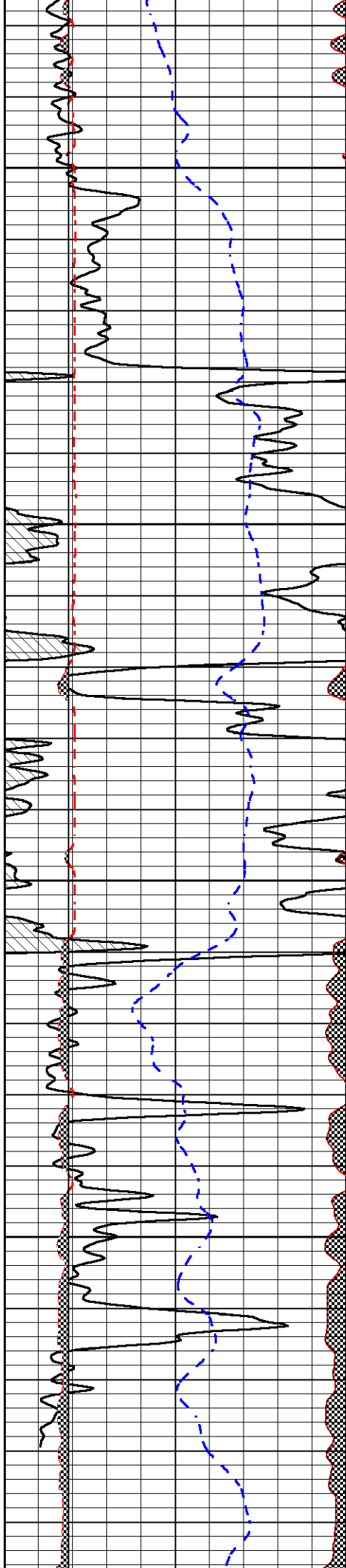
4450

4500

4550

4600



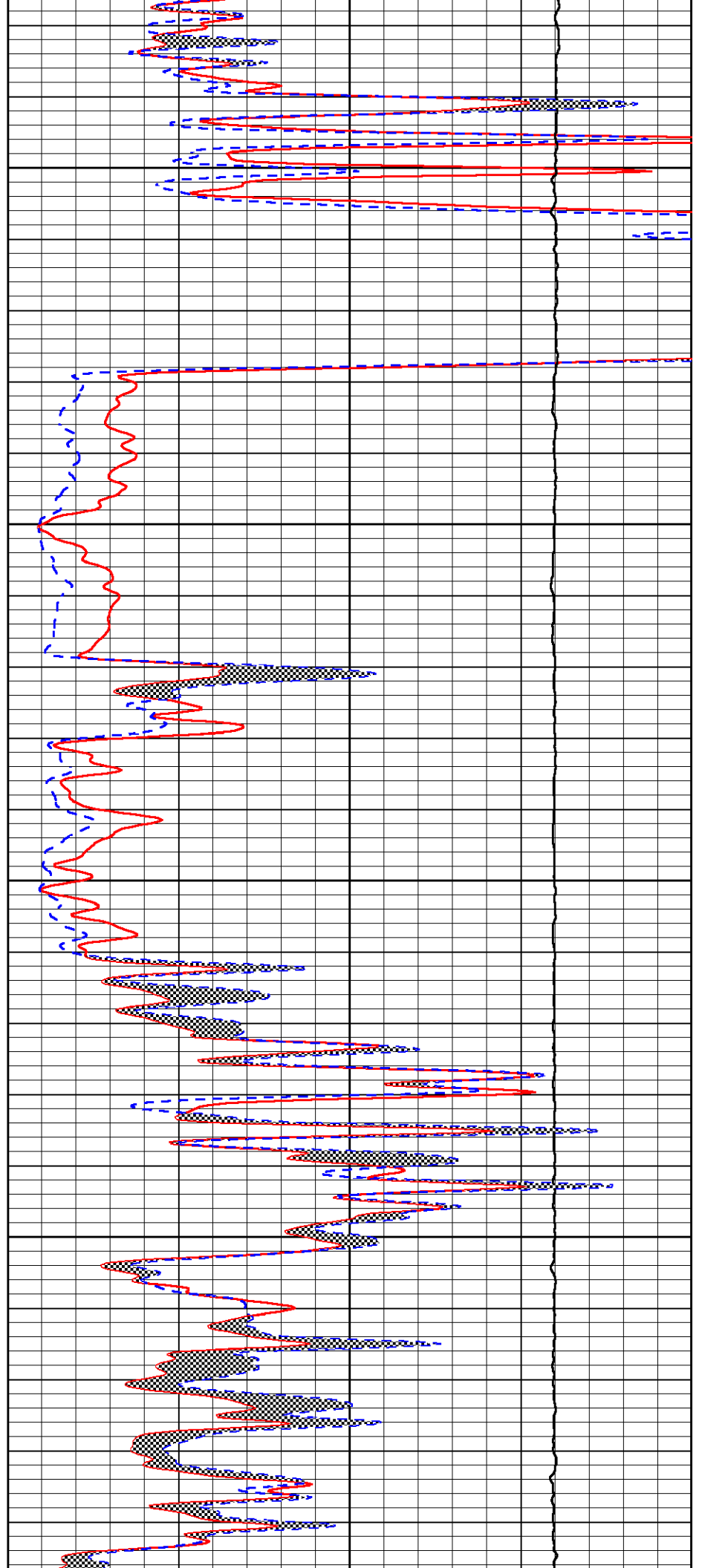


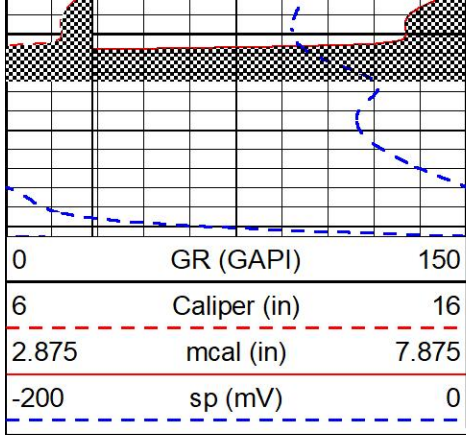
4650

4700

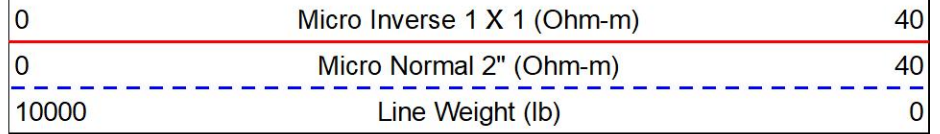
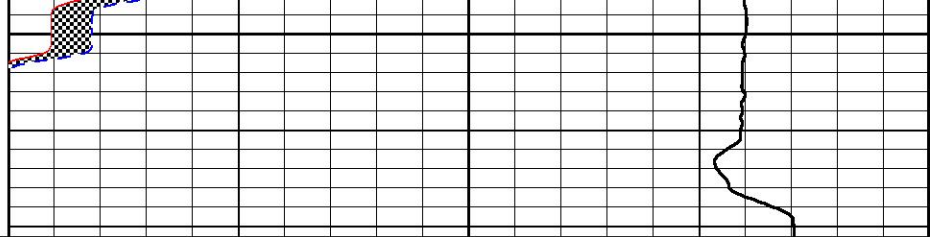
4750

4800





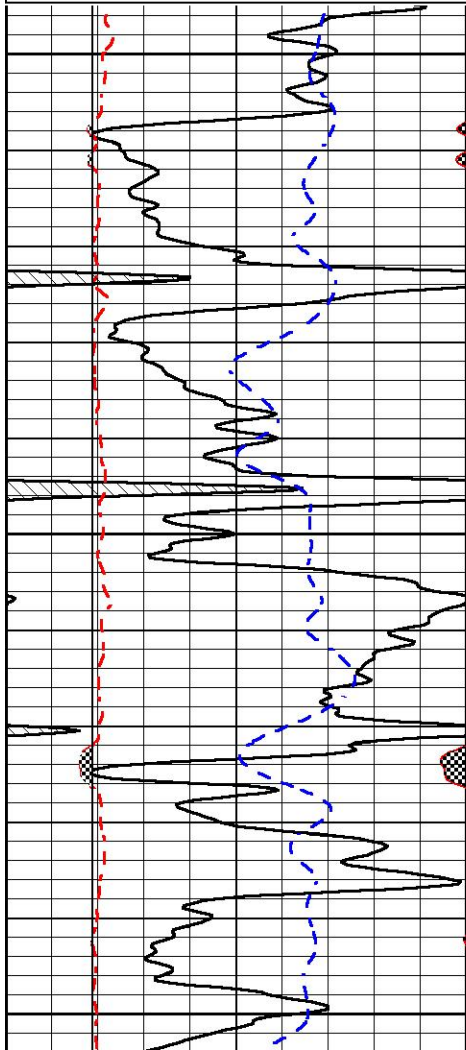
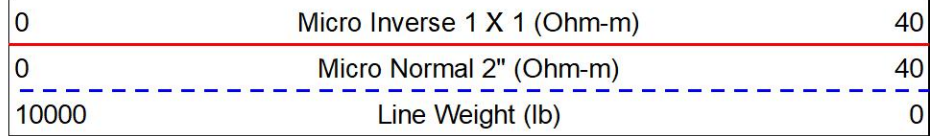
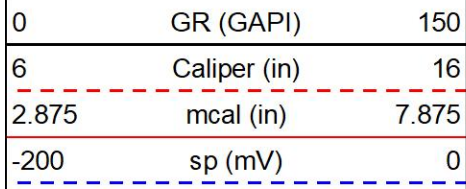
4850



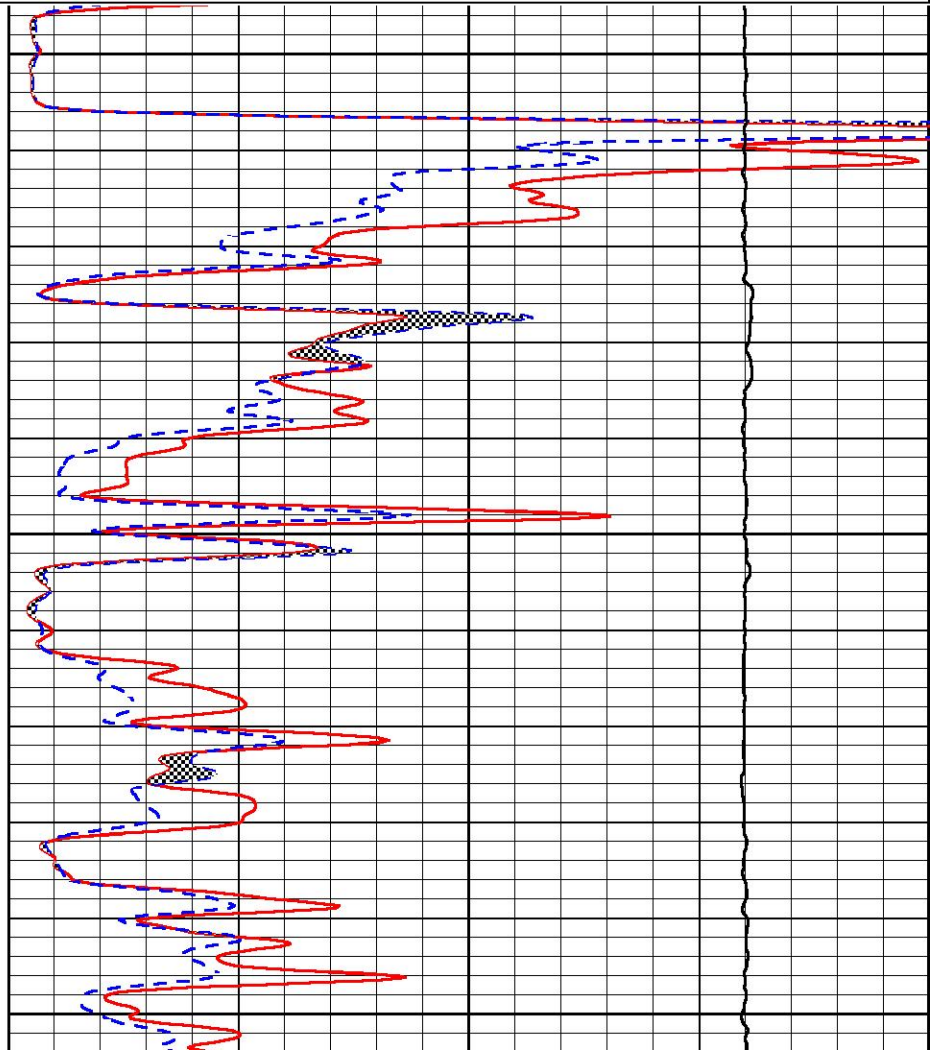
REPEAT SECTION

REPEAT PASS

Database File griffin_jenna_#1.db
 Dataset Pathname stackml/pass2.1
 Presentation Format _micro
 Dataset Creation Tue Aug 26 02:22:16 2025
 Charted by Depth in Feet scaled 1:240

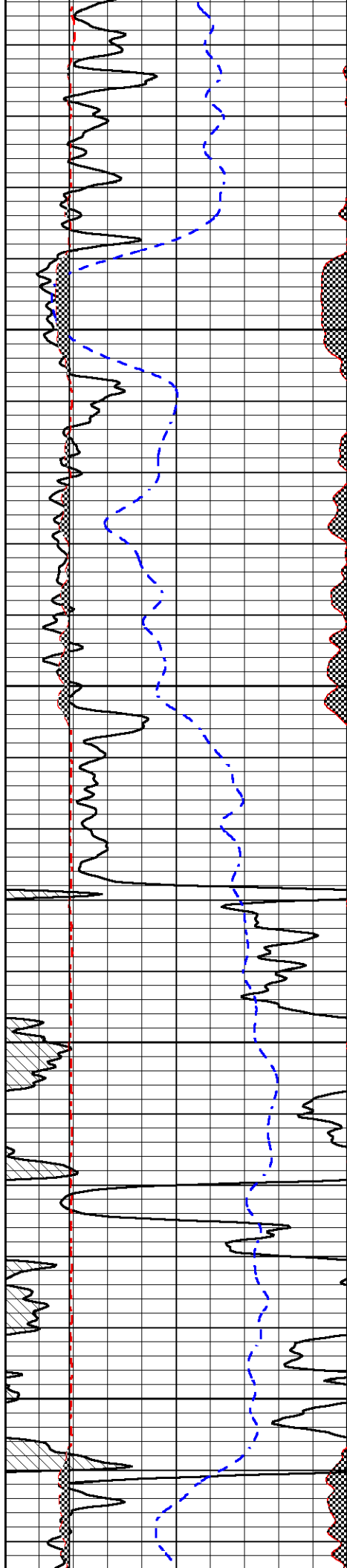


4450



4500

4550

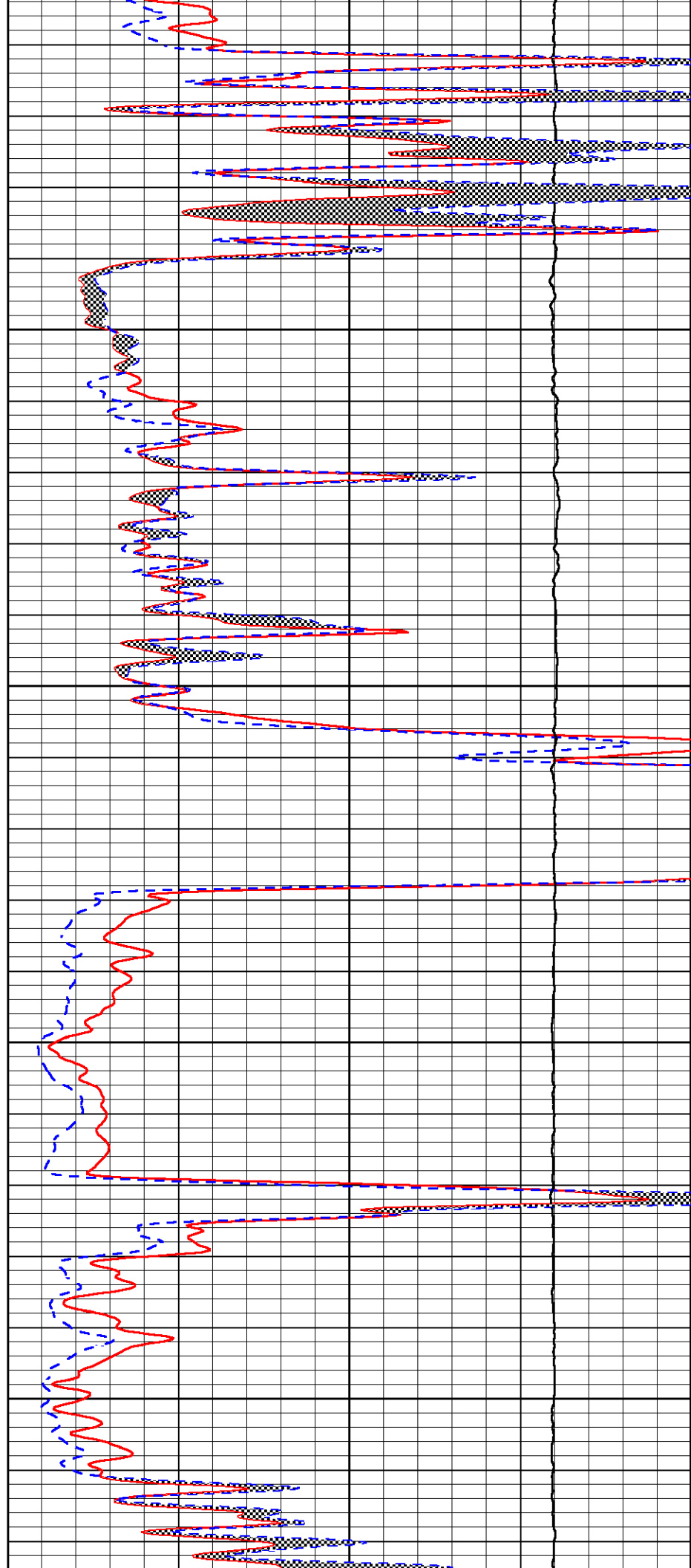


4600

4650

4700

4750



Inverse Caliper	0.0000	1.0000	0.0000	1.0000	0.0000	1.0000	0.0000	1.0000	0.0000	-0.0000
Caliper	1.0052	1.0858	5.0000	16.5000	in	85.0000	-79.7000			

LITHODENSITY Calibration Report

Serial Number: 704-10
 Tool Model: STEP LITHO
 Performed: Tue Apr 15 14:57:15 2025

Source:

	Win1	Win2	Win3	Win4	Win5	Win6	Win7	Win8	
Background:									
SS:	52	55	204	256	22	72	46	0	cps
LS:	82	92	353	452	52	145	93	3	cps
Aluminum:									
SS:	1057	1257	2829	2441	41	72	47	2	cps
LS:	1112	1906	3597	1727	62	140	93	5	cps
Magnesium:									
SS:	1757	2019	4660	3565	49	72	49	4	cps
LS:	4717	7741	14082	5659	106	129	91	15	cps
Aluminum+Iron:									
SS:	665	880	2358	2103	40	75	48	2	cps
LS:	648	1367	3077	1554	58	139	94	5	cps

	Density Actual	Calibrated	PE Actual	Calibrated Quality
Background:				
SS:				0.218
LS:				0.217
Aluminum:				
SS:	2.6000	2.6000	g/cc	0.207
LS:	2.6000	2.6000	g/cc	0.201
Magnesium:				
SS:	1.6800	1.6800	g/cc	2.5700 2.5700 0.185
LS:	1.6800	1.6800	g/cc	2.5700 2.5700 0.175
Aluminum+Iron:				
SS:				6.1800 0.217
LS:				6.1800 0.193

Before Survey									
Performed:	Wed Feb 9	13:15:42	2022						
SS:	0	0	0	0	0	0	0	0	cps
LS:	1370	1580	3705	3037	48	80	50	4	cps
After Survey									
Performed:	Wed Feb 9	13:16:02	2022						
SS:	0	0	0	0	0	0	0	0	cps
LS:	1400	1600	3800	3100	60	100	70	6	cps

Caliper:	Reference:	Reading:
Small Ring:	6.0 in	0.2
Large Ring:	16.0 in	0.8
Gain:	18.000	
Offset:	0.450	

Compensated Neutron Calibration Report

Serial Number: 201-M&W
 Tool Model: M&W

CALIBRATION

Detector	Readings	Target	Normalization
----------	----------	--------	---------------

Short Space	6240.00	cps	1000.00	cps	1.6025
Long Space	460.00	cps	1000.00	cps	1.9500

PRE-SURVEY VERIFICATION

	Detector	Readings	Measured	Target
1)	Short Space	cps		
	Long Space	cps	pu	pu
2)	Short Space	cps		
	Long Space	cps	pu	
3)	Short Space	cps		
	Long Space	cps	pu	

POST-SURVEY VERIFICATION

	Detector	Readings	Measured	Target
1)	Short Space	cps		
	Long Space	cps	pu	pu
2)	Short Space	cps		
	Long Space	cps	pu	pu
3)	Short Space	cps		
	Long Space	cps	pu	pu

Gamma Ray Calibration Report

Serial Number:	105	
Tool Model:	M&W	
Performed:	Mon Aug 7 20:46:01 2023	
Calibrator Value:	500.0	GAPI
Background Reading:	24.0	cps
Calibrator Reading:	637.0	cps
Sensitivity:	0.6000	GAPI/cps



Company	Griffin Management, LLC
Well	Jenna #1
Field	Turkey Creek East
County	Barber
State	Kansas