



**MIDWEST SURVEYS**  
 LOGGING - PERFORATING - CONSULTING SERVICES  
 P.O. Box 68, Osawatomie, KS 68084  
 913 / 755 - 2128

**GAMMA RAY / NEUTRON / CCL**

File No. \_\_\_\_\_

Company **Colt Energy, Inc.**

Well **Charlotte Hobbs No.-65**

Field **Iola**

County **Allen** State **Kansas**

Location **207' FNL & 569' FWL  
NE-NW-NW-NW**

Other Services **Perforate**

Sec. 9 **Top. 24S Rge. 18E**

Permament Datum **GL** Elevation **1017'**

Log Measured From **GL** K.B. NA  
D.L. NA

Drilling Measured From **GL** G.L. 1017'

Date **10-23-2023**

Run Number **One**

Depth Logger **1050.0**

Bottom Logger **1028.8**

Bottom Logged Interval **1027.8**

Top Log Interval **20.0**

Fluid Level **Full**

Type Fluid **Water**

Density / Viscosity **NA**

Salinity - PPM Cl **NA**

Max Recorded Temp **NA**

Estimated Cement Top **NA**

Equipment No. **107** Location **Oswatimie**

Recorded By **Steve Windisch**

Witnessed By **Wes Moods**

BORE-HOLE RECORD				CASING RECORD			
Run	BIT	FROM	TO	SIZE	WGT	FROM	TO
One	12.25"	0.0	20.0	8.625"	280	0.0	20.0
Two	6.75"	20.0	1050.0	4.50"	10.5	0.0	1040.3
					Set	At	1038.3

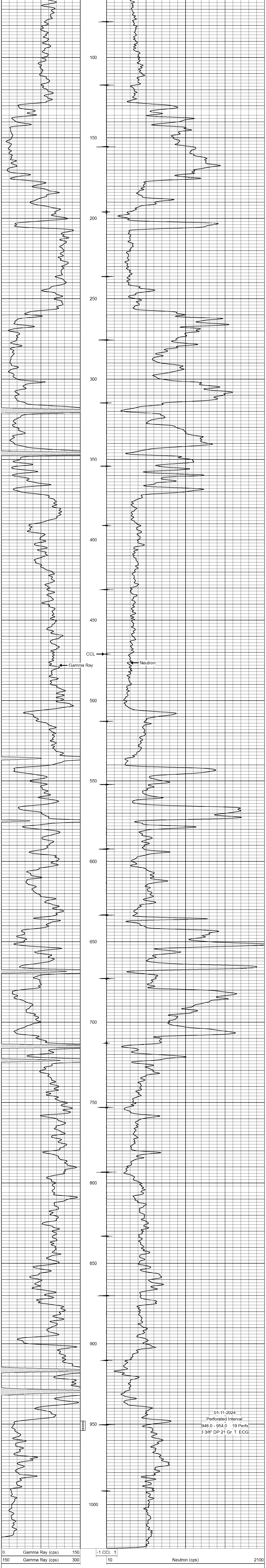
<<< Fold Here >>>

All interpretations are opinions based on inferences from electrical or other measurements and we cannot and do not guarantee the accuracy or correctness of any interpretation, and we shall not, except in the case of gross or willful negligence on our part, be liable or responsible for any loss, costs, damages, or expenses incurred or sustained by anyone resulting from any interpretation made by any of our officers, agents or employees. These interpretations are also subject to our general terms and conditions set out in our current Price Schedule.

**Comments**

Drilling Contractor :  
Colt Energy, Inc.

Database File: charlotte hobbs 65.db  
 Dataset Pathname: pass1  
 Presentation Format: gr-n-ccl  
 Dataset Creation: Tue Nov 21 14:59:10 2023  
 Charted by: Depth in Feet scaled 1:240



01-11-2024  
 Perforated Interval  
 948.0 - 954.0 19 Perfs  
 3 3/8" DP 21 Gr. T. ECG