



SONIC LOG

Company VESS OIL CORPORATION
 Well RAMSEY #10
 Field EL DORADO
 County BUTLER State KANSAS

Location: API #: 15-015-24215-0000
 1420 FSL & 990 FEL
 S2 - SW - NE - SE
 SEC 6 TWP 25S RGE 05E
 Permanent Datum GROUND LEVEL Elevation 1420
 Log Measured From KELLY BUSHING 8' A.G.L
 Drilling Measured From KELLY BUSHING
 Other Services
 CDL/CNL/PE
 DIL/MEL
 Elevation
 K.B. 1428
 D.F. 1426
 G.L. 1420

Date	11/20/23
Run Number	THREE
Depth Driller	2580
Depth Logger	2577
Bottom Logged Interval	2569
Top Log Interval	263
Casing Driller	8.625 @ 263
Casing Logger	263
Bit Size	7.875
Type Fluid in Hole	CHEMICAL MUD
Density / Viscosity	9.3/44
PH / Fluid Loss	10.0/7.2
Source of Sample	FLOWLINE
Rm @ Meas. Temp	1.70 @ 65F
Rmt @ Meas. Temp	1.28 @ 65F
Rmc @ Meas. Temp	2.04 @ 65F
Source of Rmf / Rmc	MEASUREMENT
Rm @ BHT	1.07 @ 103F
Time Circulation Stopped	4 HOURS
Time Logger on Bottom	3:00 P.M.
Maximum Recorded Temperature	103F
Equipment Number	3802
Location	HAYS, KANSAS
Recorded By	COLE ROBBEN
Witnessed By	ROGER MARTIN

<<< Fold Here >>>

All interpretations are opinions based on inferences from electrical or other measurements and we cannot and do not guarantee the accuracy or correctness of any interpretation, and we shall not, except in the case of gross or willful negligence on our part, be liable or responsible for any loss, costs, damages, or expenses incurred or sustained by anyone resulting from any interpretation made by any of our officers, agents or employees. These interpretations are also subject to our general terms and conditions set out in our current Price Schedule.

Comments

THANK YOU FOR USING ELI WIRELINE SERVICES, HAYS, KS. (785) 628-6395

DIRECTIONS:

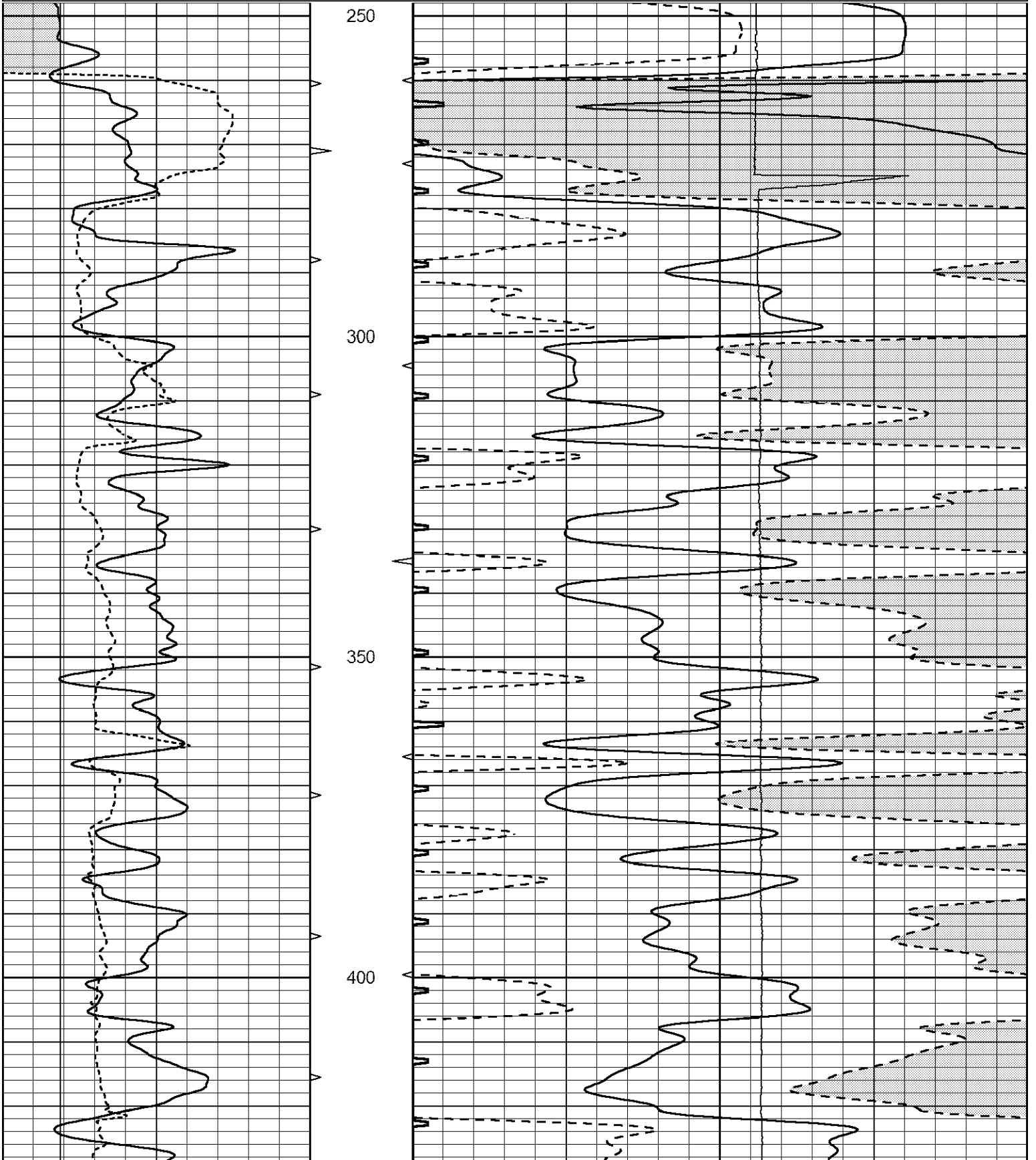
FROM WEST SIDE OF EL DORADO, KANSAS ON HIGHWAY 254/196 GO NORTH 5 1/2 MILES
 NORTH ON HIGHWAY 196 TO NW 50TH STREET, 1 1/2 MILES EAST, NORTH INTO

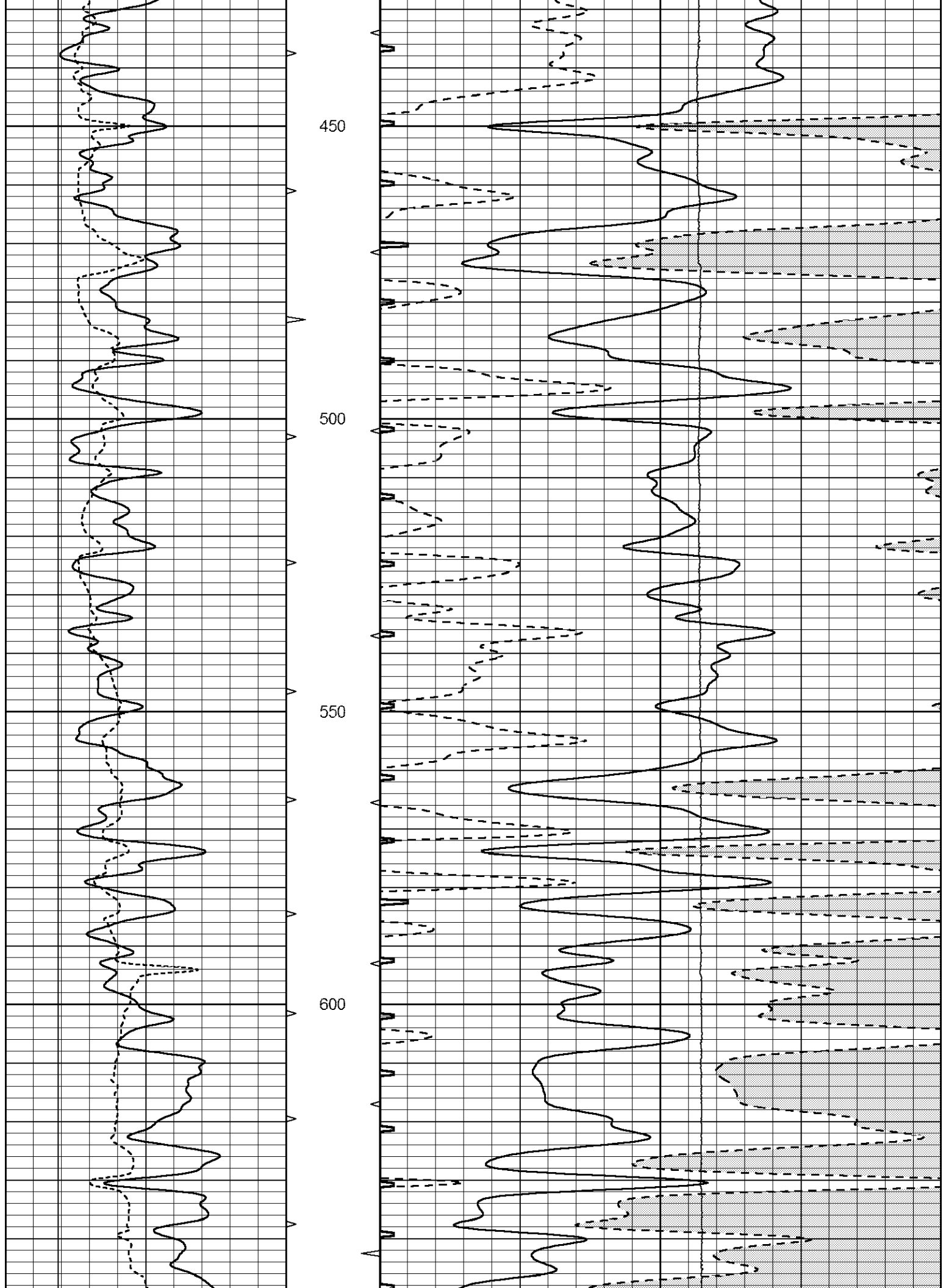


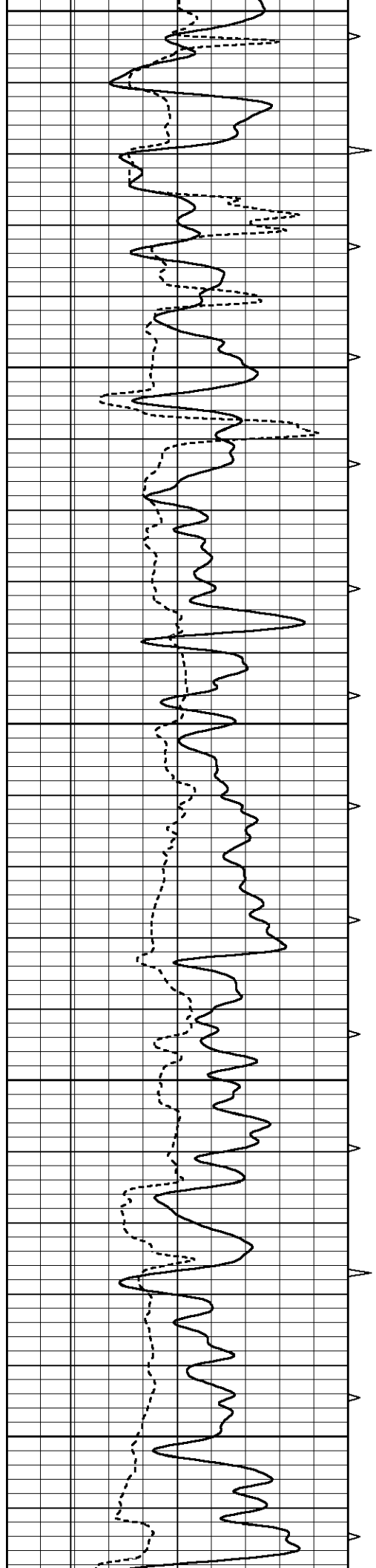
MAIN SECTION

Database File 7795pe.db
 Dataset Pathname pass10S
 Presentation Format _slt
 Dataset Creation Mon Nov 20 17:11:52 2023
 Charted by Depth in Feet scaled 1:240

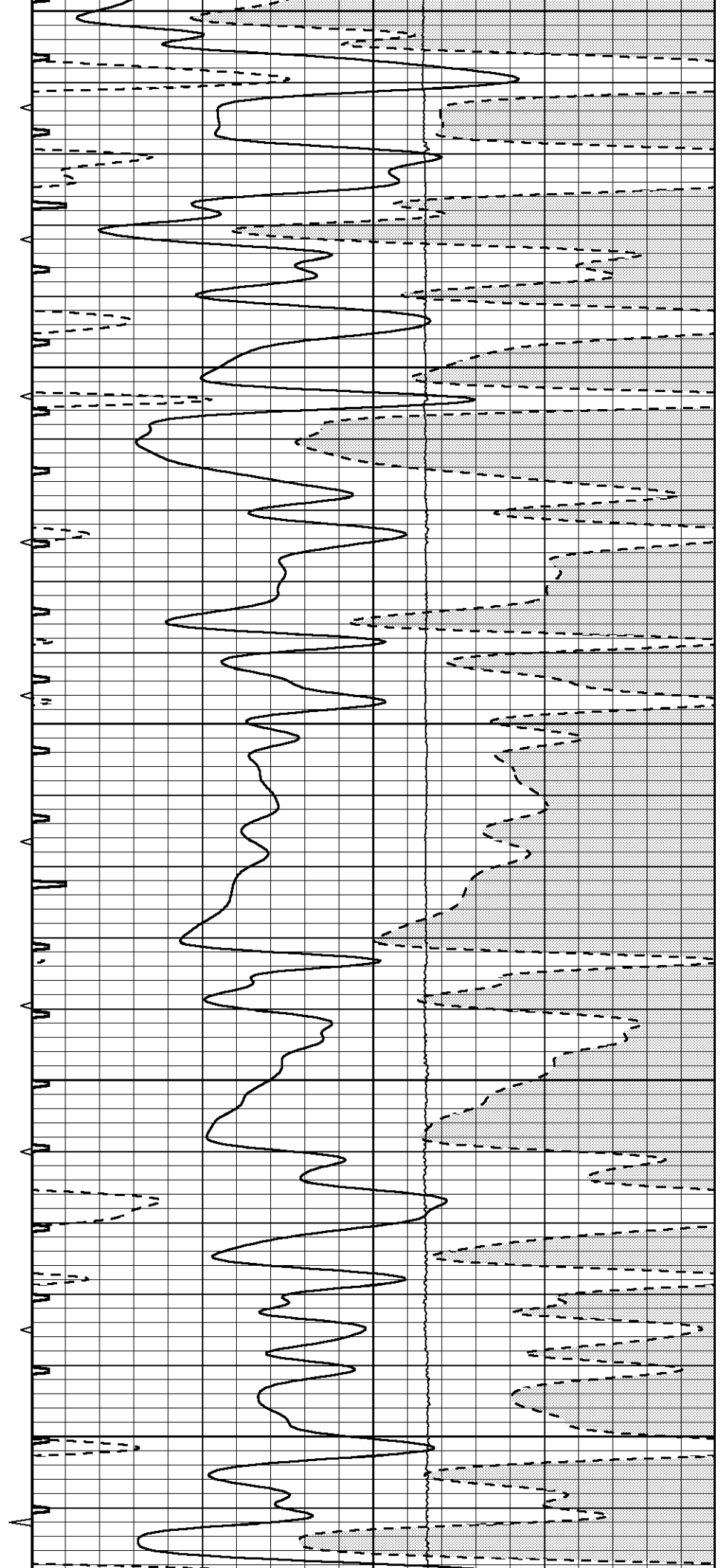
0	GAMMA RAY (GAPI)	150	ABHV	140	DELTA TIME (usec/ft)	40
6	CALIPER (in)	16	10 (ft3) 0	30	SONIC POROSITY (pu)	-10
-----			TBHV	0	ITT (msec)	20 0
			0 (ft3) 10	LTEN (lb) 5000		

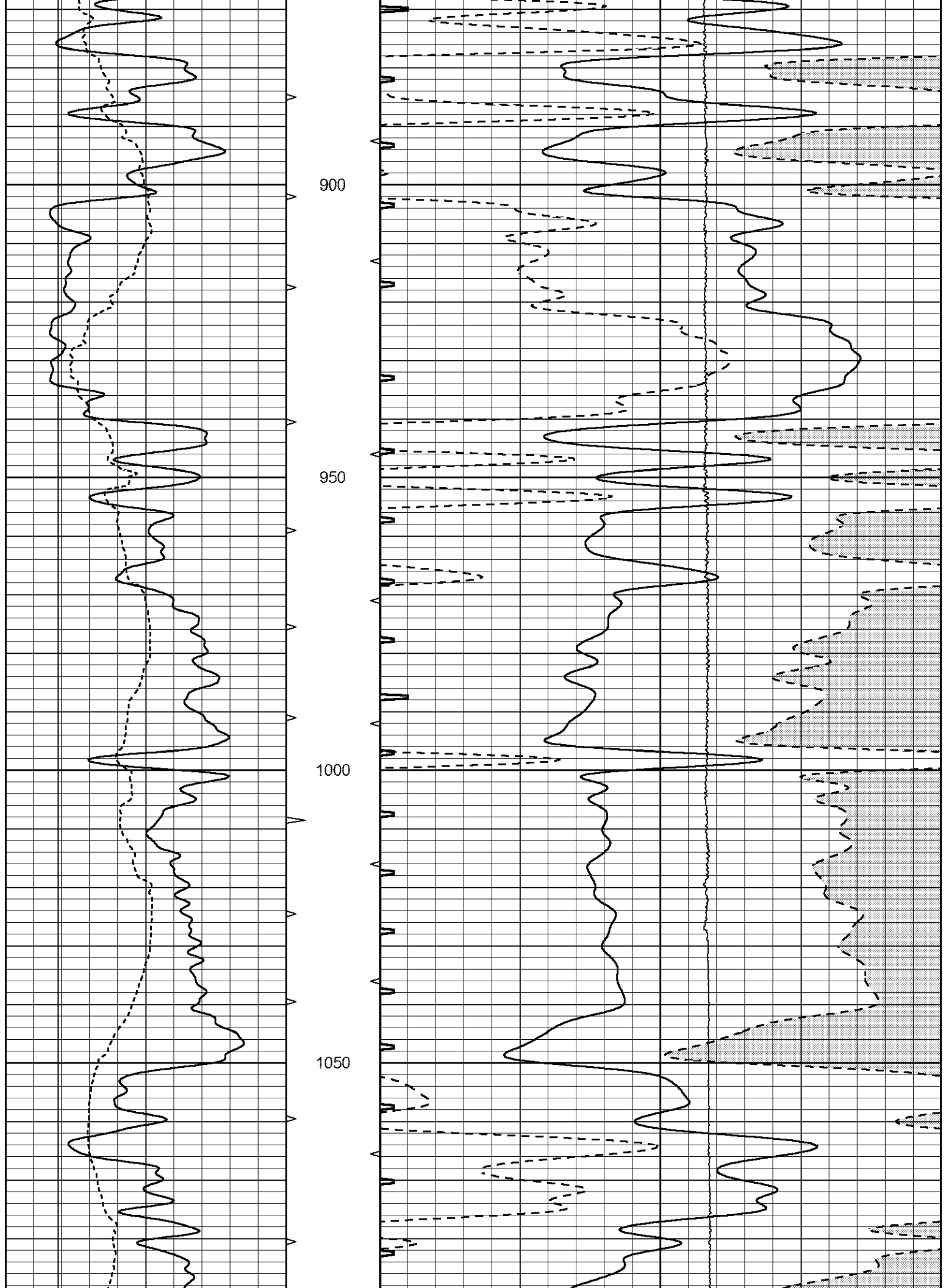


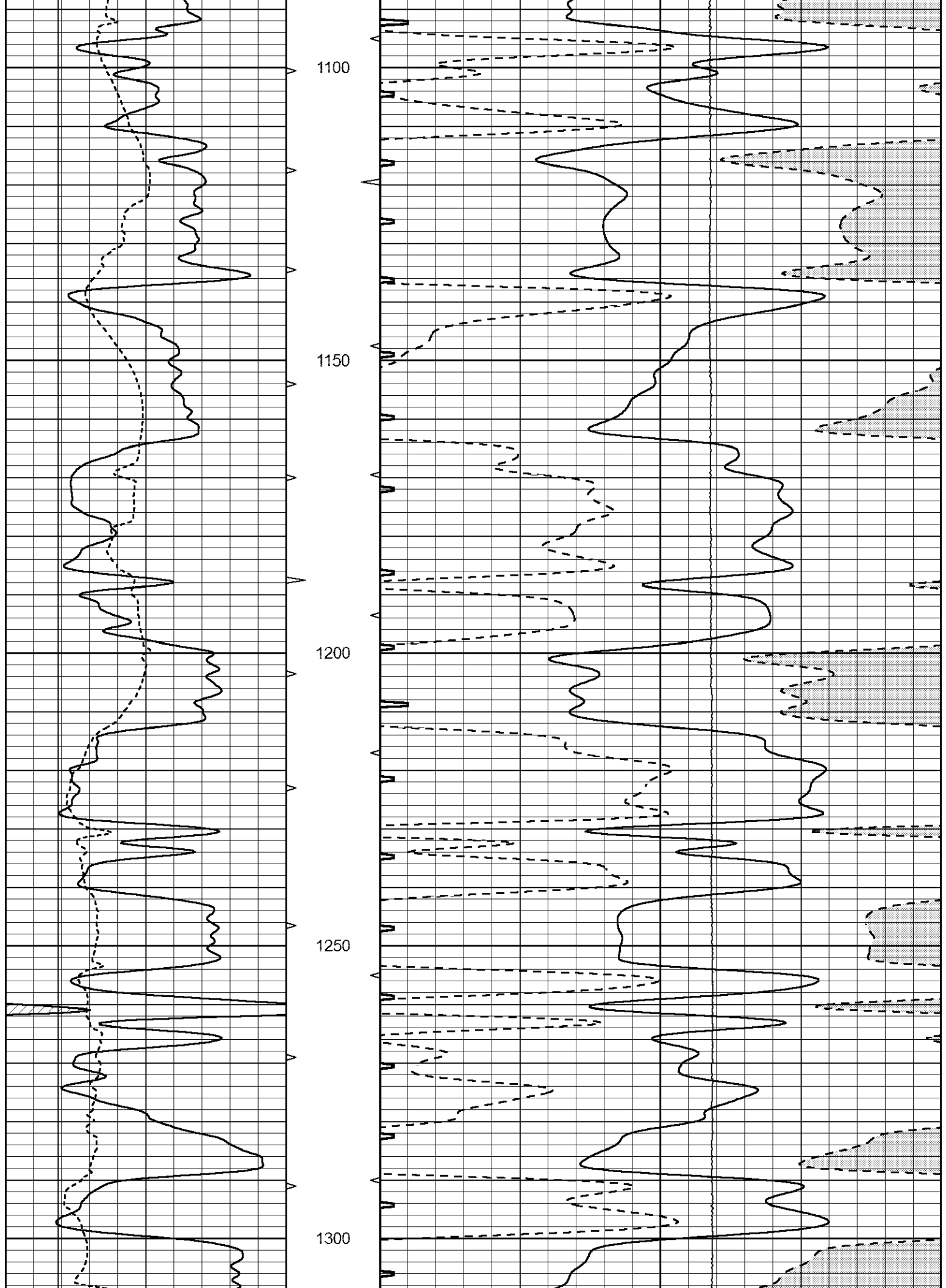


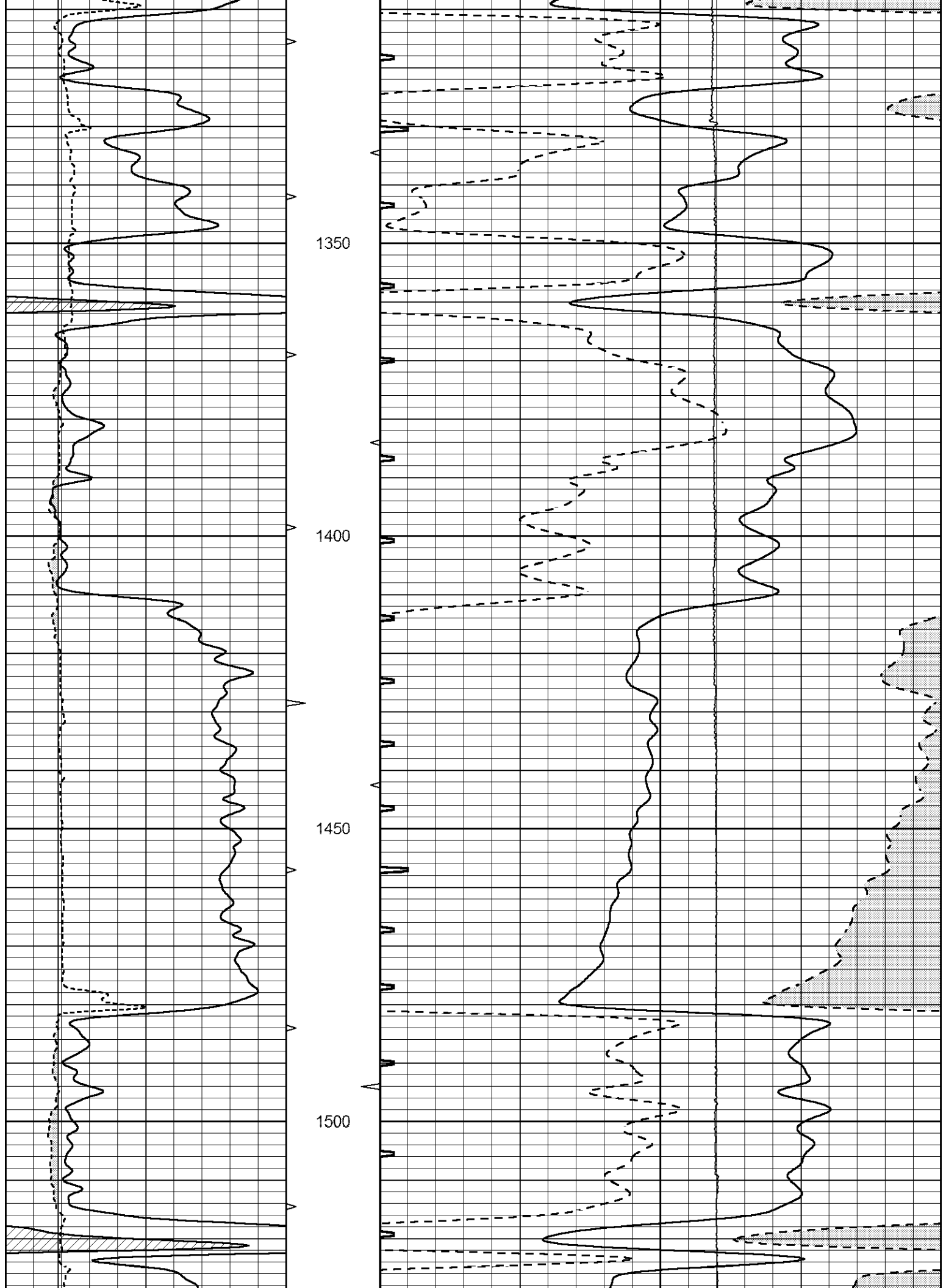


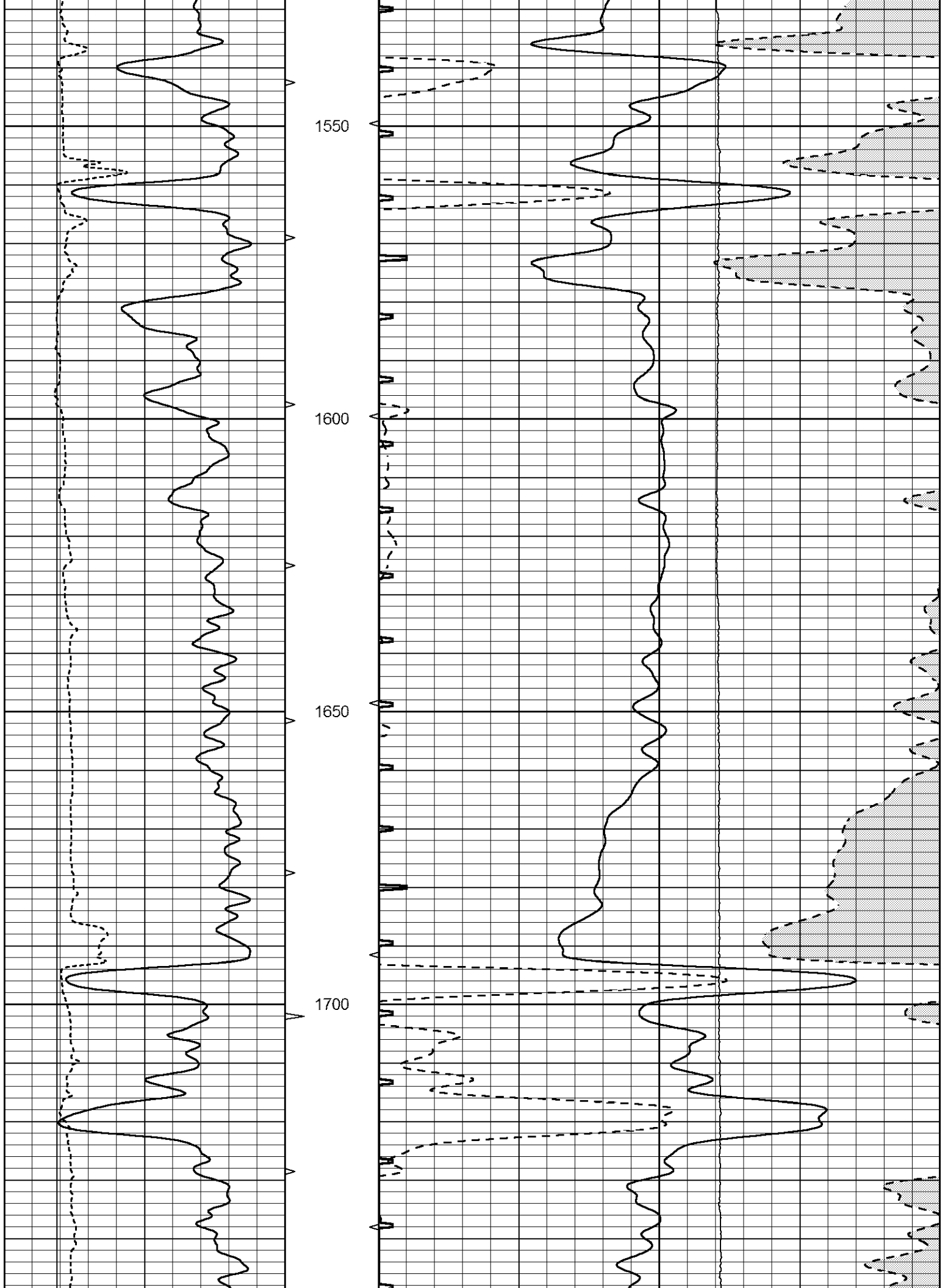
650
700
750
800
850

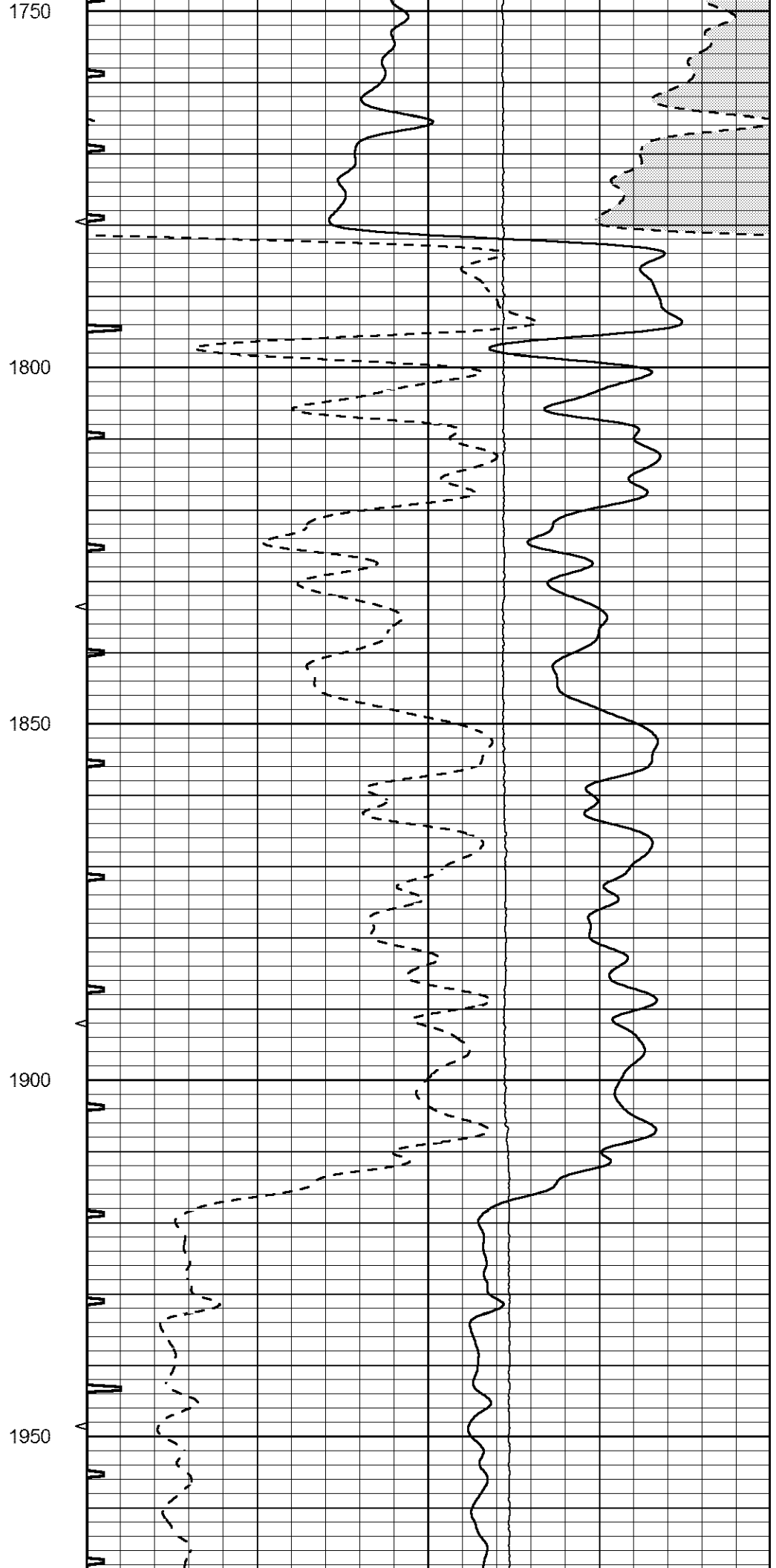
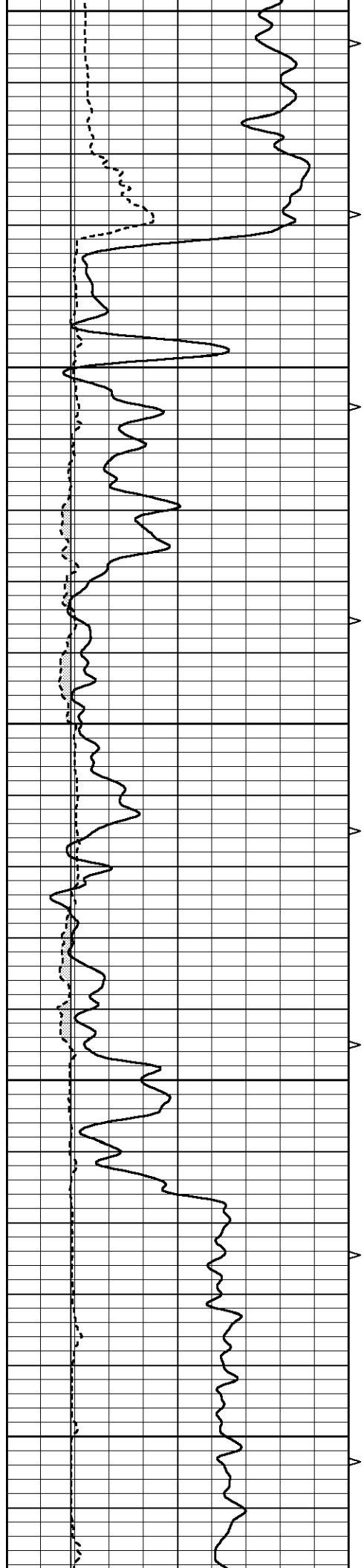


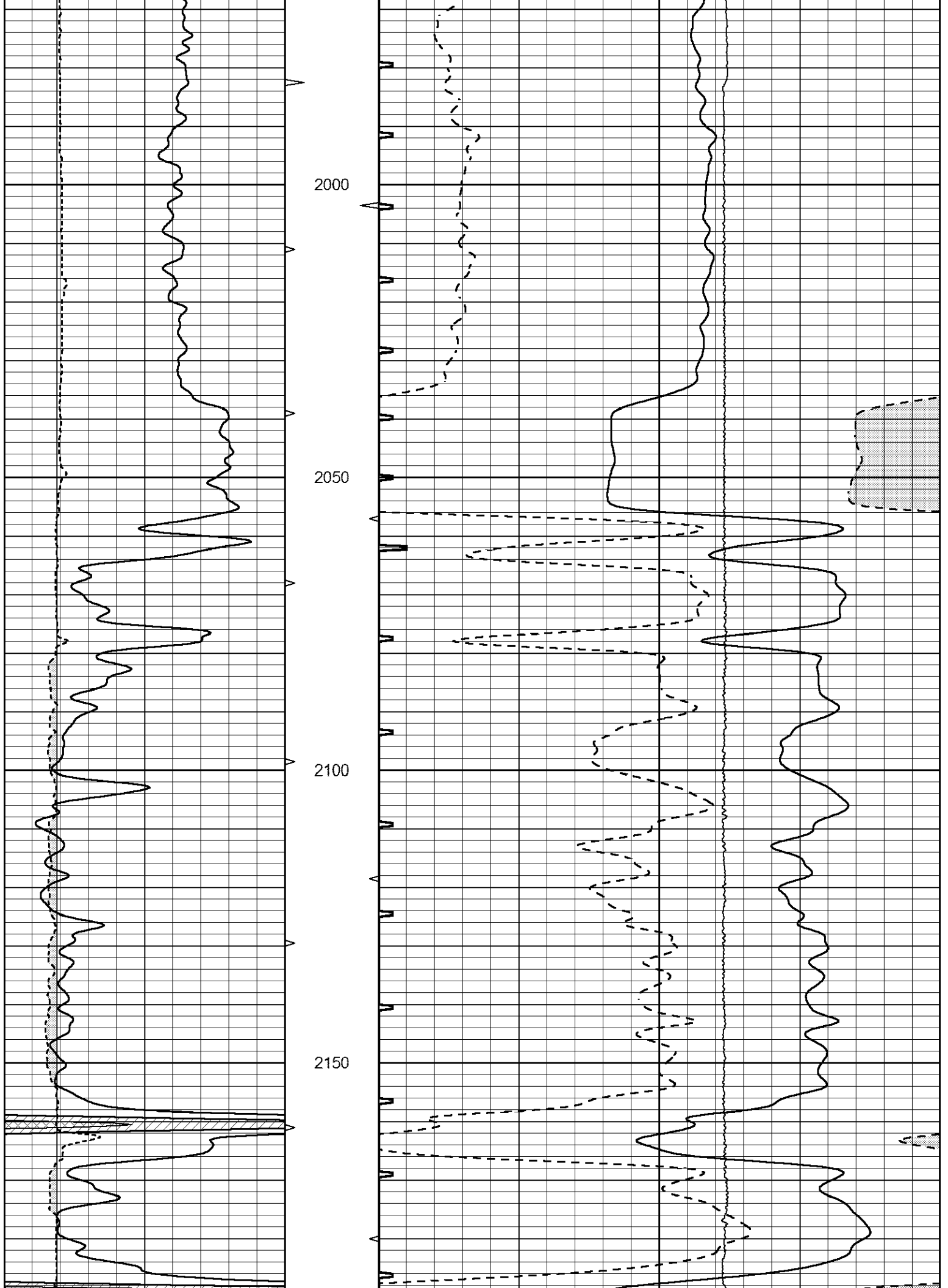


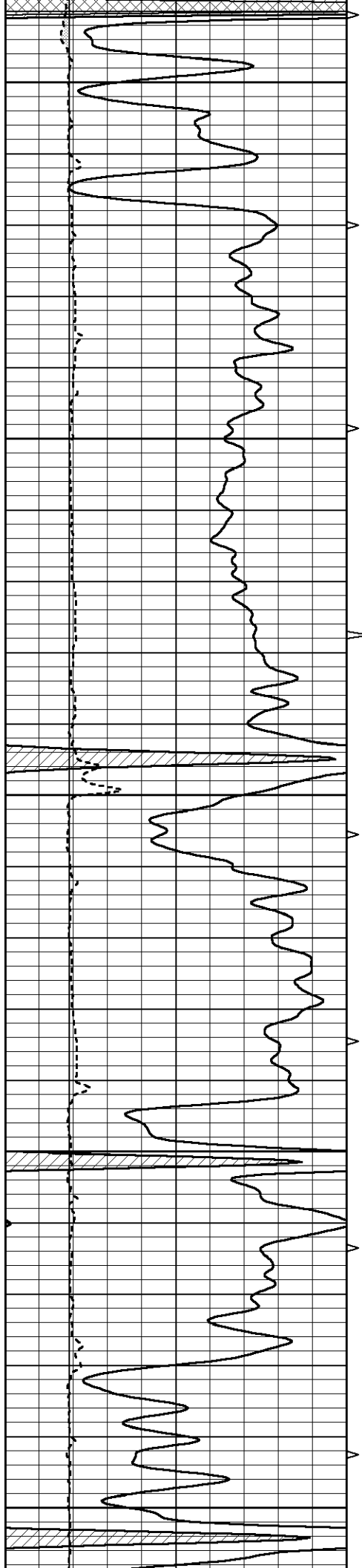












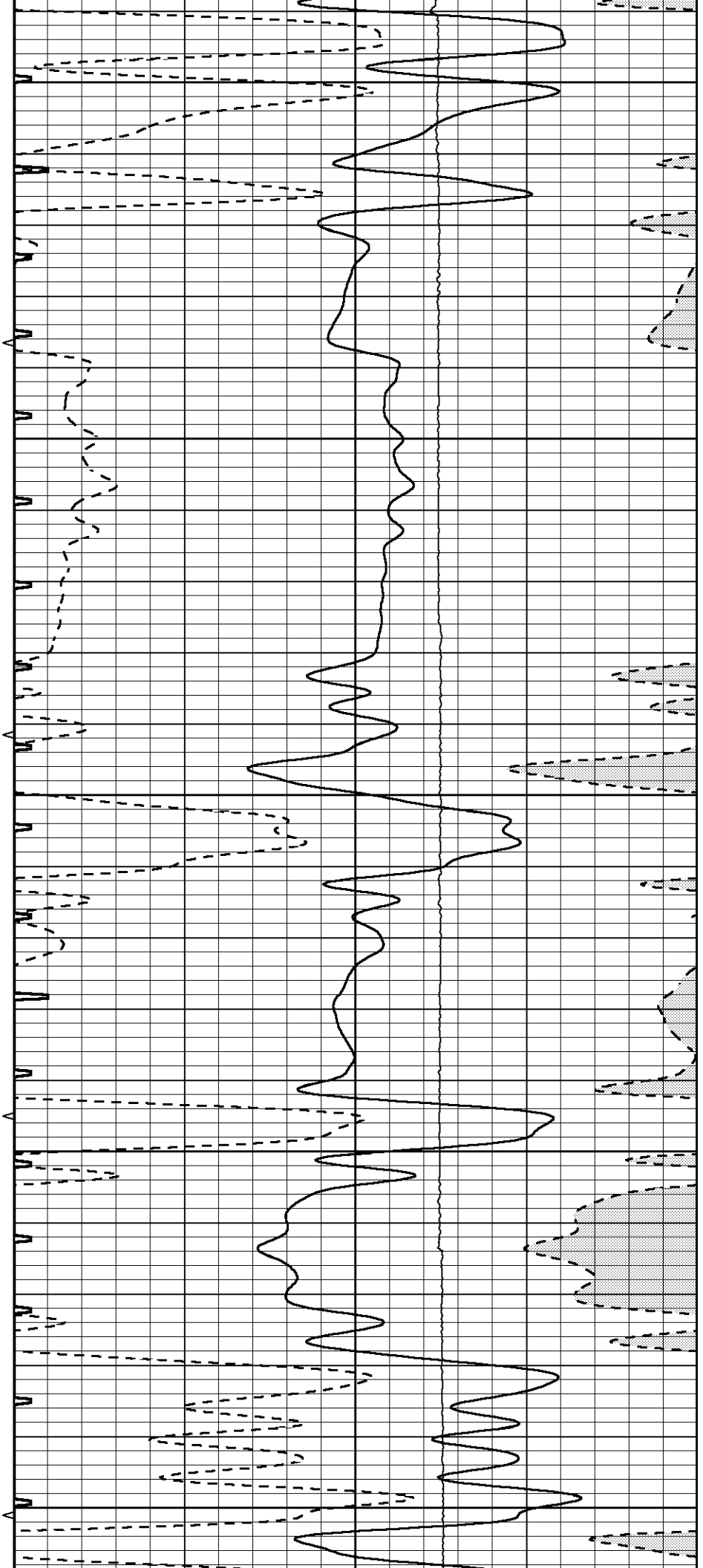
2200

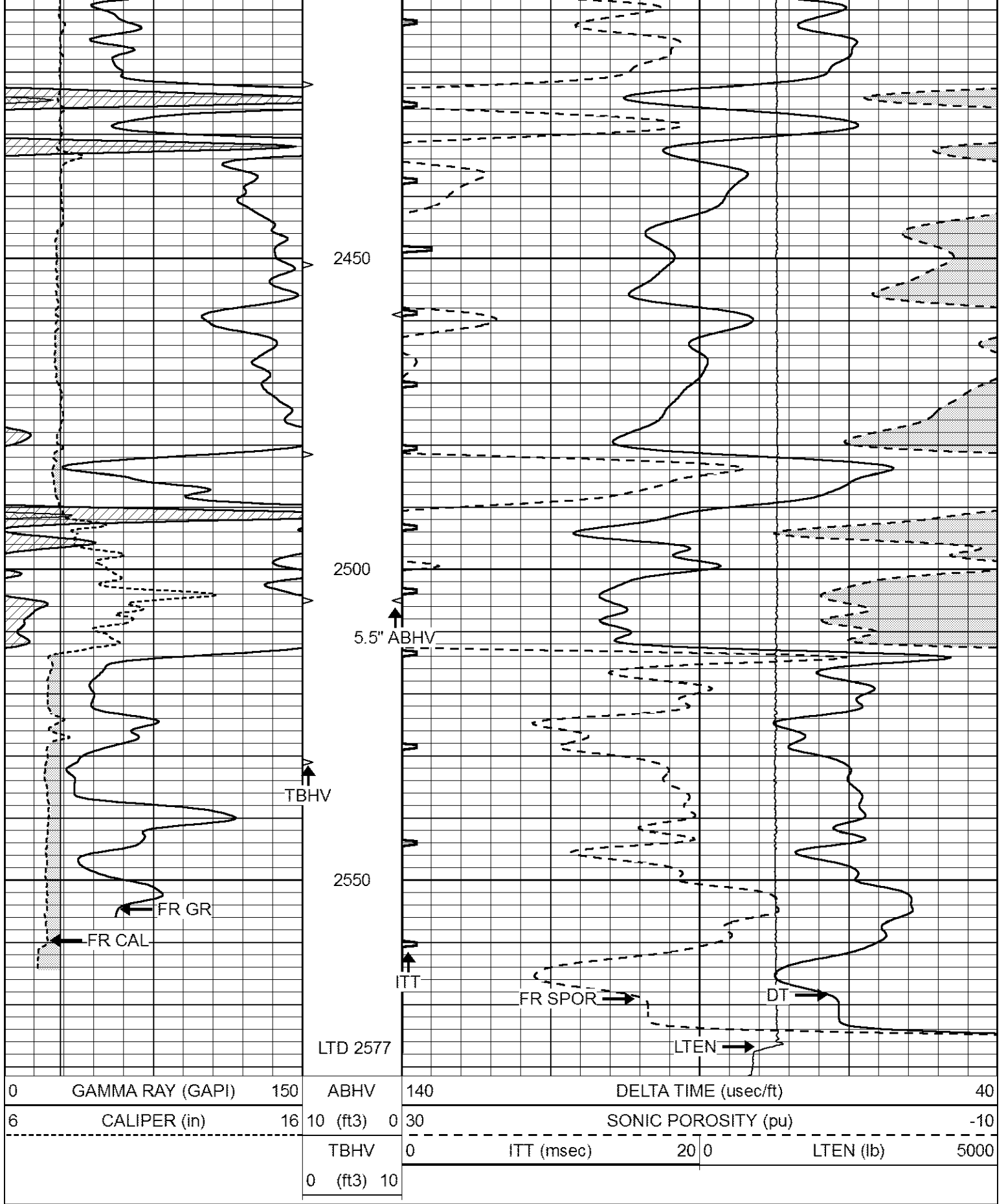
2250

2300

2350

2400

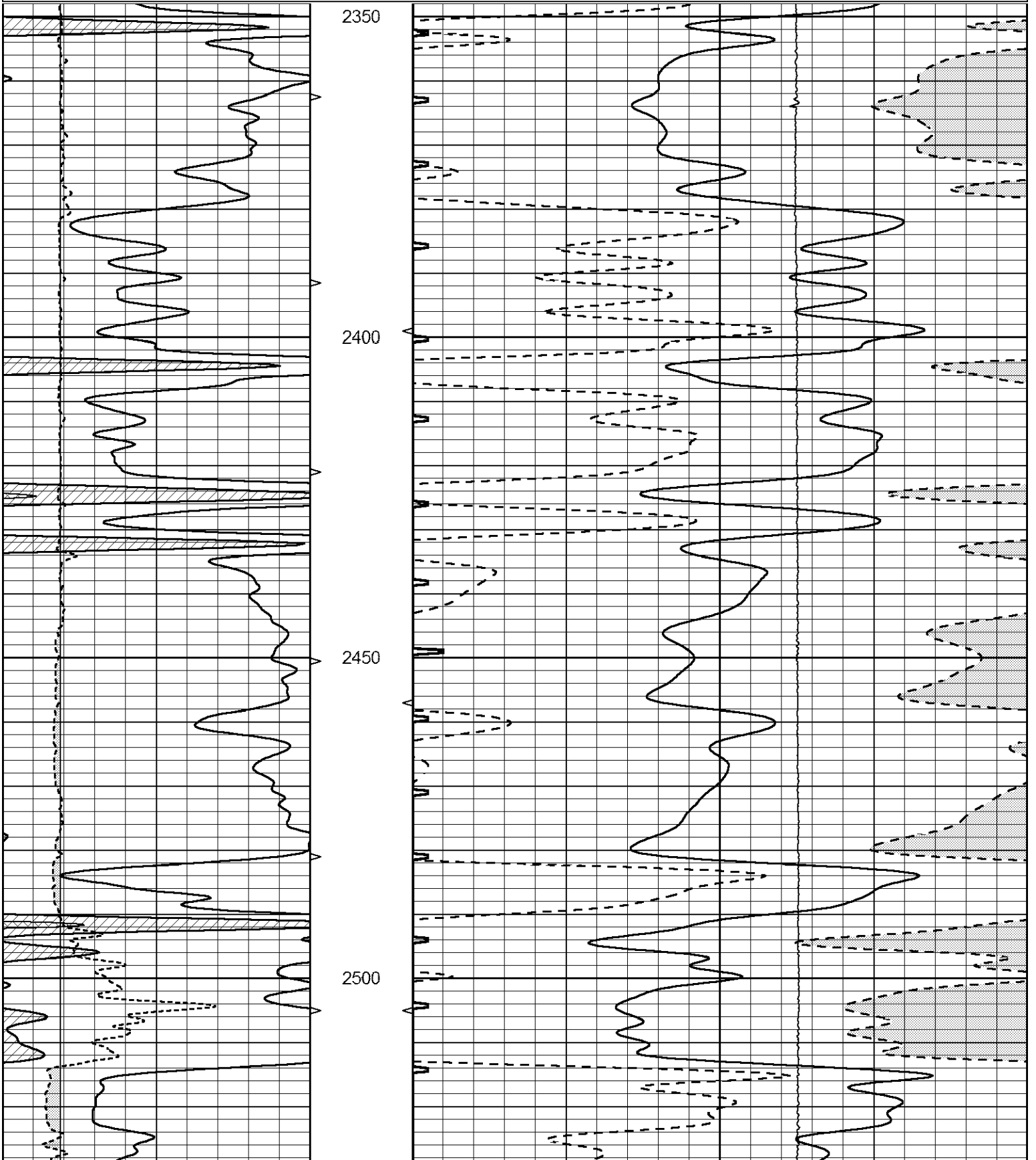


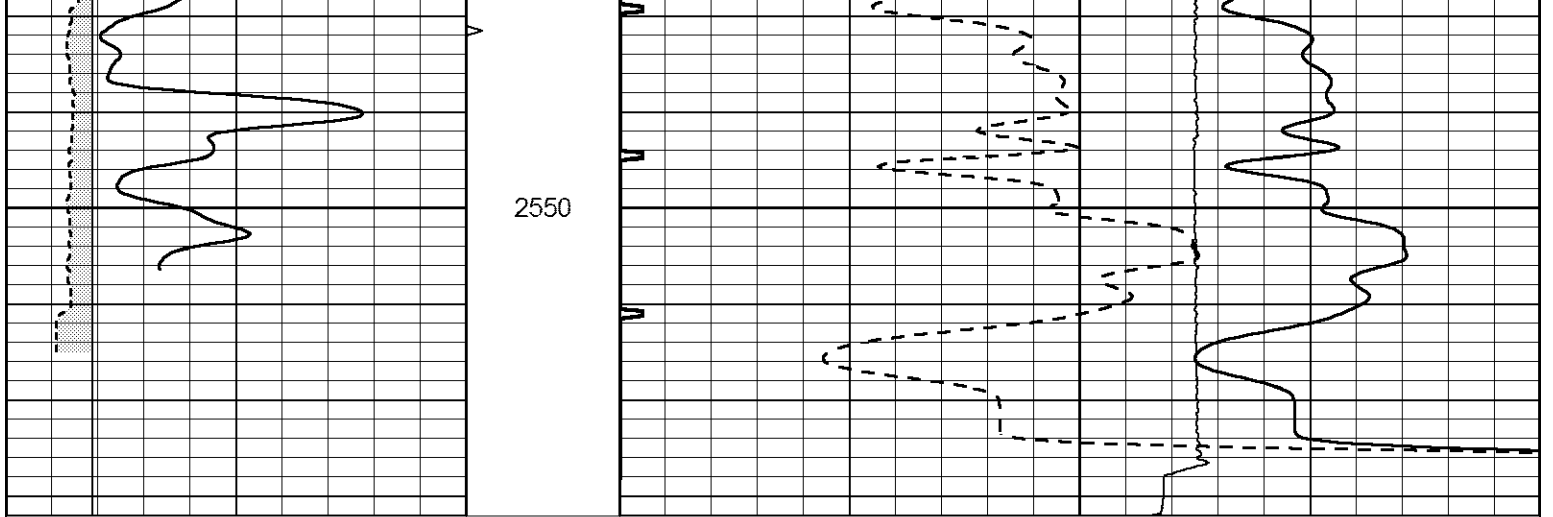


REPEAT SECTION

Database File 7795pe.db
 Dataset Pathname pass9R
 Presentation Format _slt
 Dataset Creation Mon Nov 20 17:22:46 2023
 Charted by Depth in Feet scaled 1:240

0	GAMMA RAY (GAPI)	150	ABHV	140	DELTA TIME (usec/ft)	40			
6	CALIPER (in)	16	10 (ft3)	0	30	SONIC POROSITY (pu)	-10		
-----			TBHV	0	ITT (msec)	20	0	LTEN (lb)	5000
-----			0 (ft3)	10					





0	GAMMA RAY (GAPI)	150	ABHV	140	DELTA TIME (usec/ft)	40
6	CALIPER (in)	16	10 (ft3) 0	30	SONIC POROSITY (pu)	-10
			TBHV	0	ITT (msec)	20 0
			0 (ft3) 10		LTEN (lb)	5000