



MICRO LOG

Company VESS OIL CORPORATION
 Well RAMSEY #10
 Field EL DORADO
 County BUTLER State KANSAS

Location: API #: 15-015-24215-0000
 1420 FSL & 990 FEL
 S2 - SW - NE - SE
 SEC 6 TWP 25S RGE 05E
 Permanent Datum GROUND LEVEL Elevation 1420
 Log Measured From KELLY BUSHING 8' A.G.L
 Drilling Measured From KELLY BUSHING
 Other Services
 CDL/CNL/PE
 DIL/SON
 Elevation
 K.B. 1428
 D.F. 1426
 G.L. 1420

Date	11/20/23
Run Number	THREE
Depth Driller	2580
Depth Logger	2577
Bottom Logged Interval	2561
Top Log Interval	263
Casing Driller	8.625 @ 263
Casing Logger	263
Bit Size	7.875
Type Fluid in Hole	CHEMICAL MUD
Density / Viscosity	9.3/44
PH / Fluid Loss	10.0/7.2
Source of Sample	FLOWLINE
Rm @ Meas. Temp	1.70 @ 65F
Rmt @ Meas. Temp	1.28 @ 65F
Rmc @ Meas. Temp	2.04 @ 65F
Source of Rmf / Rmc	MEASUREMENT
Rm @ BHT	1.07 @ 103F
Time Circulation Stopped	4 HOURS
Time Logger on Bottom	3:00 P.M.
Maximum Recorded Temperature	103F
Equipment Number	3802
Location	HAYS, KANSAS
Recorded By	COLE ROBBEN
Witnessed By	ROGER MARTIN

<<< Fold Here >>>

All interpretations are opinions based on inferences from electrical or other measurements and we cannot and do not guarantee the accuracy or correctness of any interpretation, and we shall not, except in the case of gross or willful negligence on our part, be liable or responsible for any loss, costs, damages, or expenses incurred or sustained by anyone resulting from any interpretation made by any of our officers, agents or employees. These interpretations are also subject to our general terms and conditions set out in our current Price Schedule.

Comments

THANK YOU FOR USING ELI WIRELINE SERVICES, HAYS, KS. (785) 628-6395

DIRECTIONS:

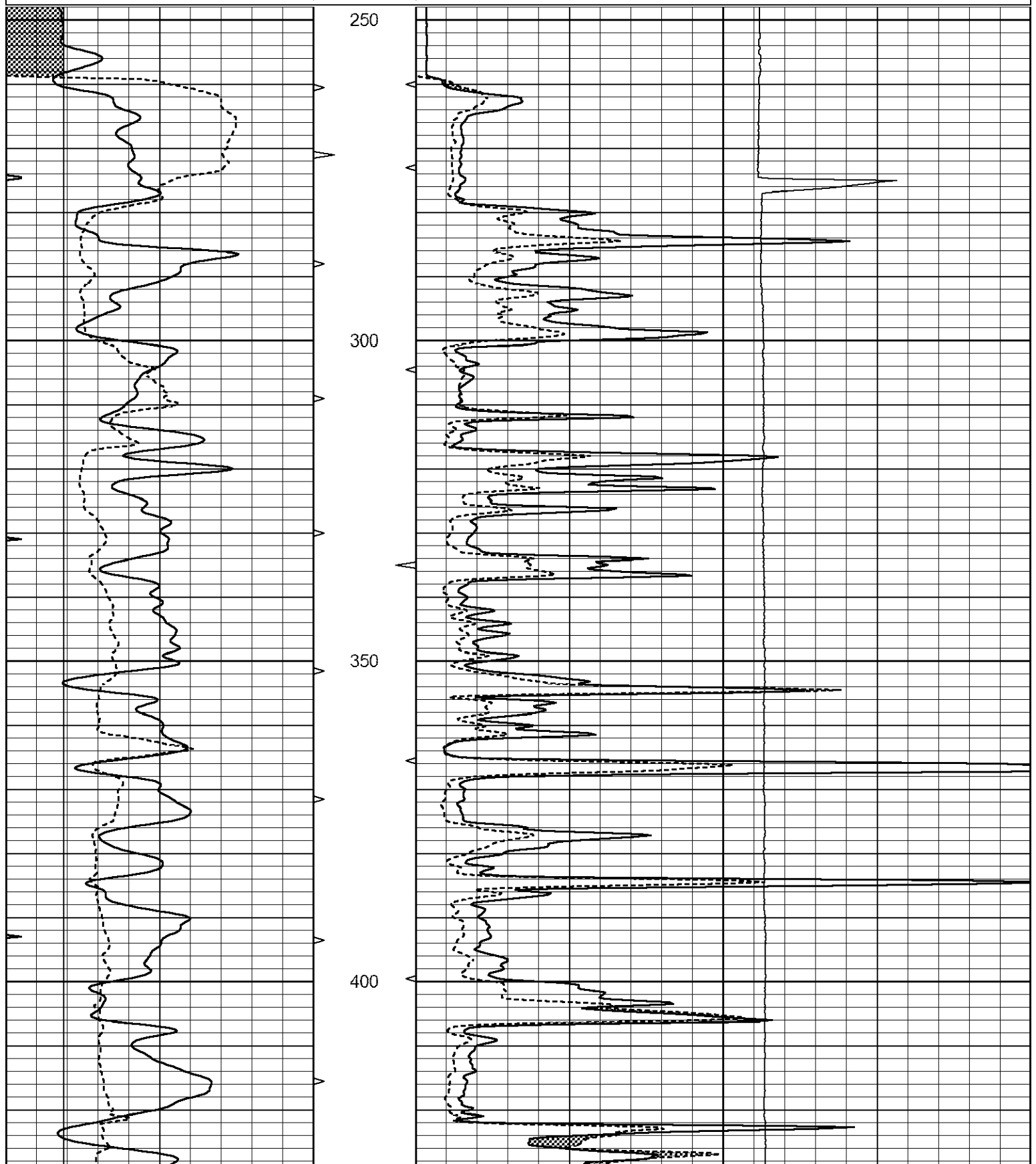
FROM WEST SIDE OF EL DORADO, KANSAS ON HIGHWAY 254/196 GO NORTH 5 1/2 MILES
 NORTH ON HIGHWAY 196 TO NW 50TH STREET, 1 1/2 MILES EAST, NORTH INTO

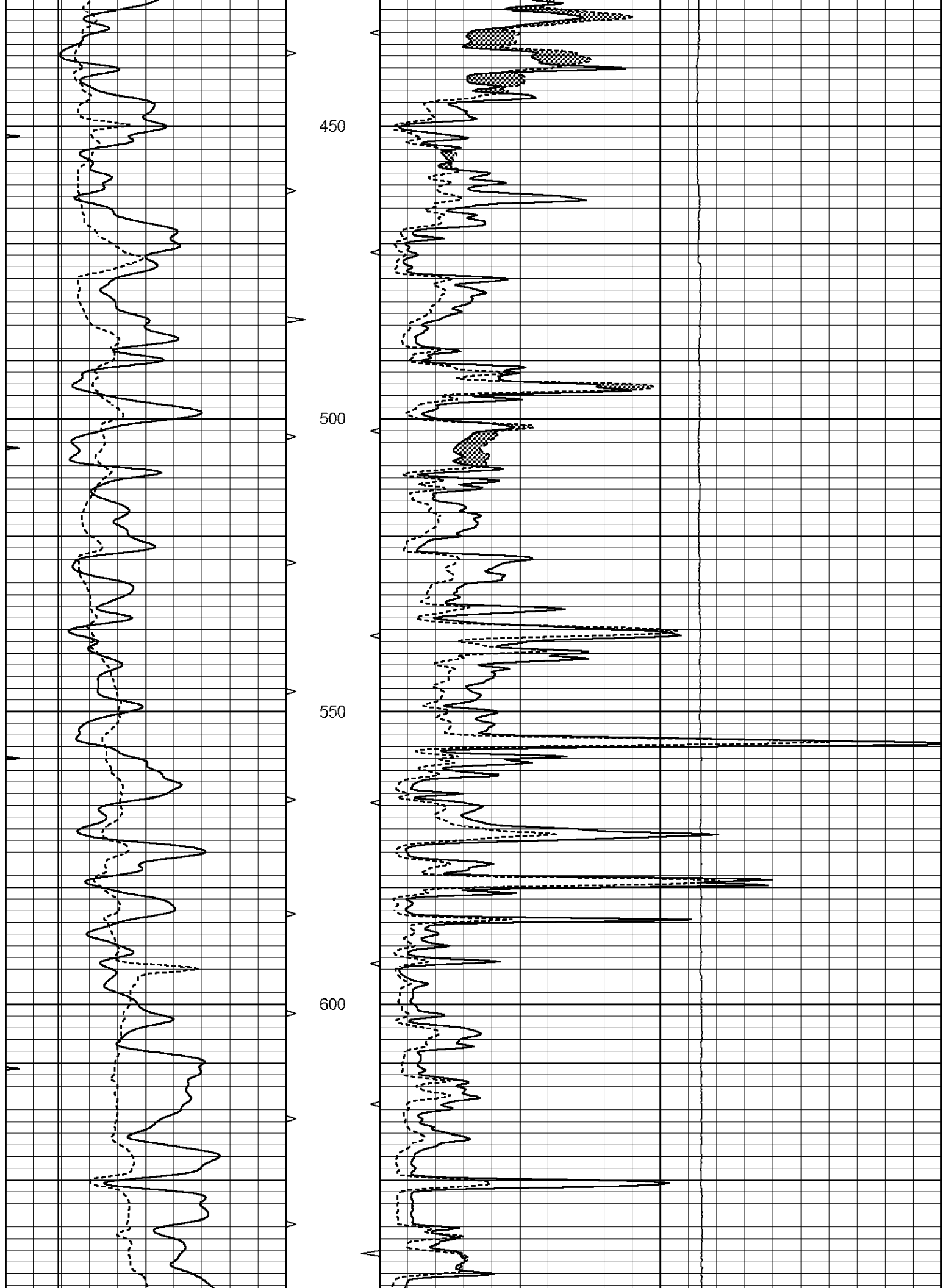


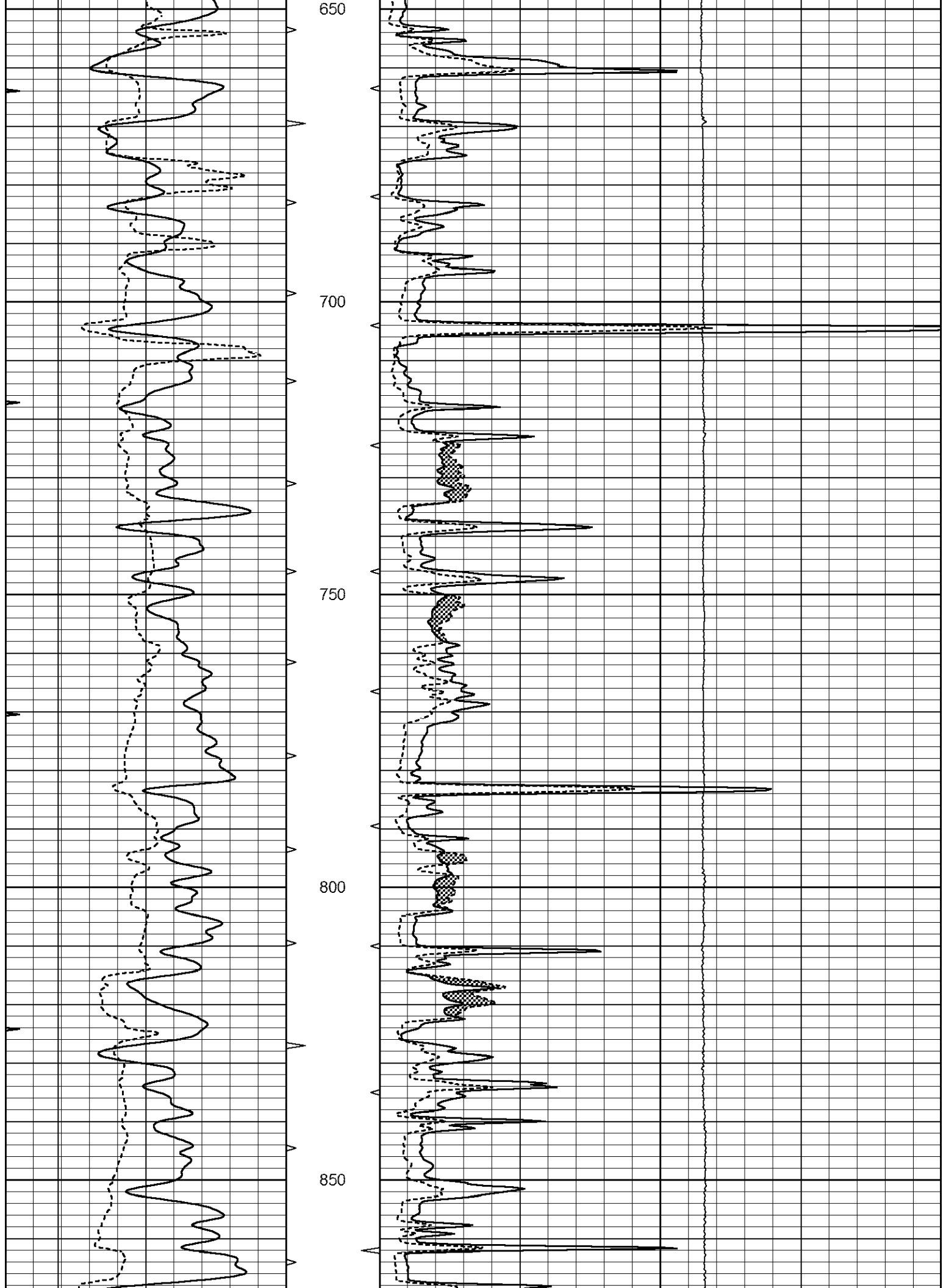
MAIN SECTION

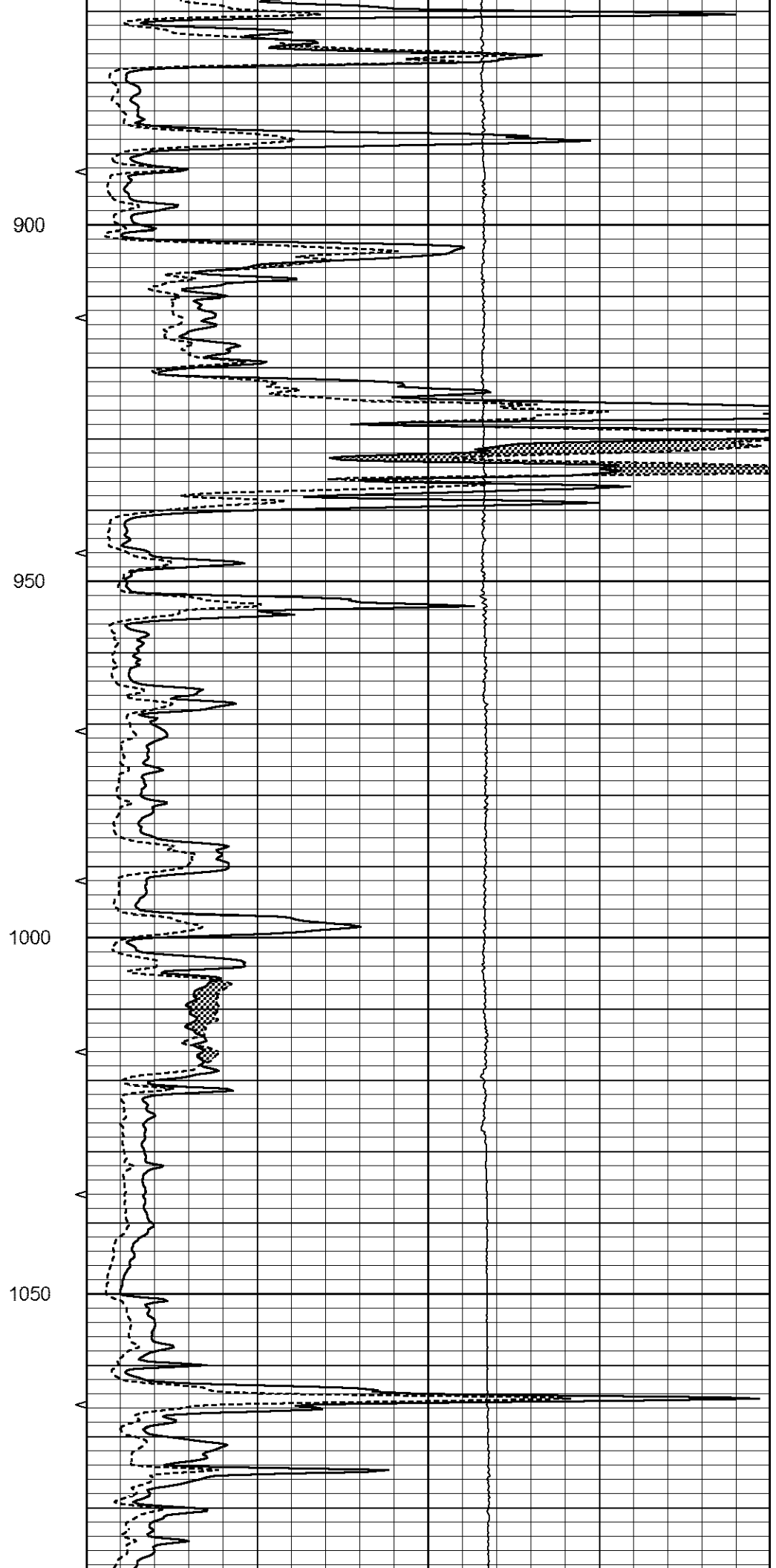
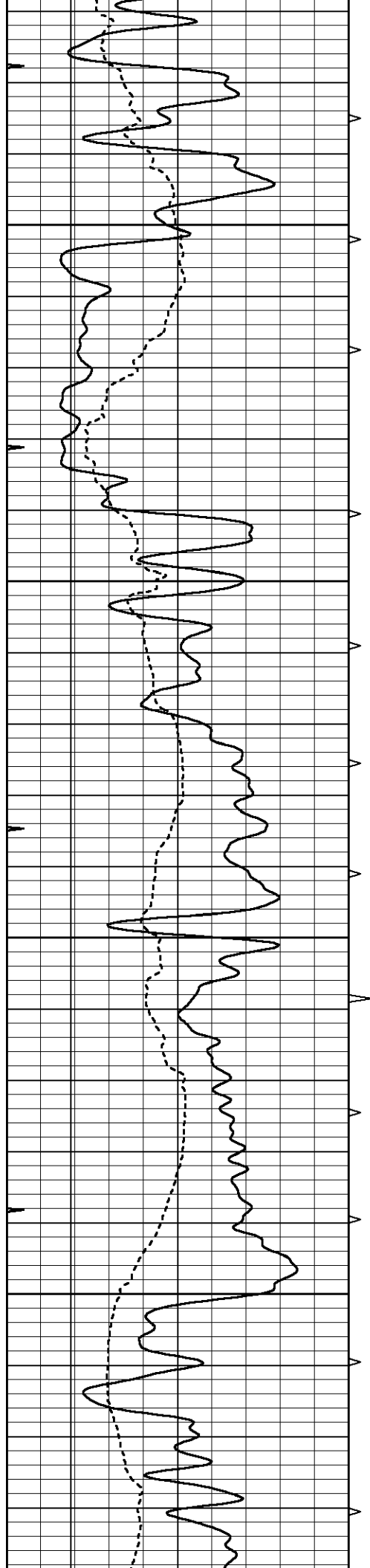
Database File 7795pe.db
 Dataset Pathname pass10ML
 Presentation Format _micro
 Dataset Creation Mon Nov 20 17:37:32 2023
 Charted by Depth in Feet scaled 1:240

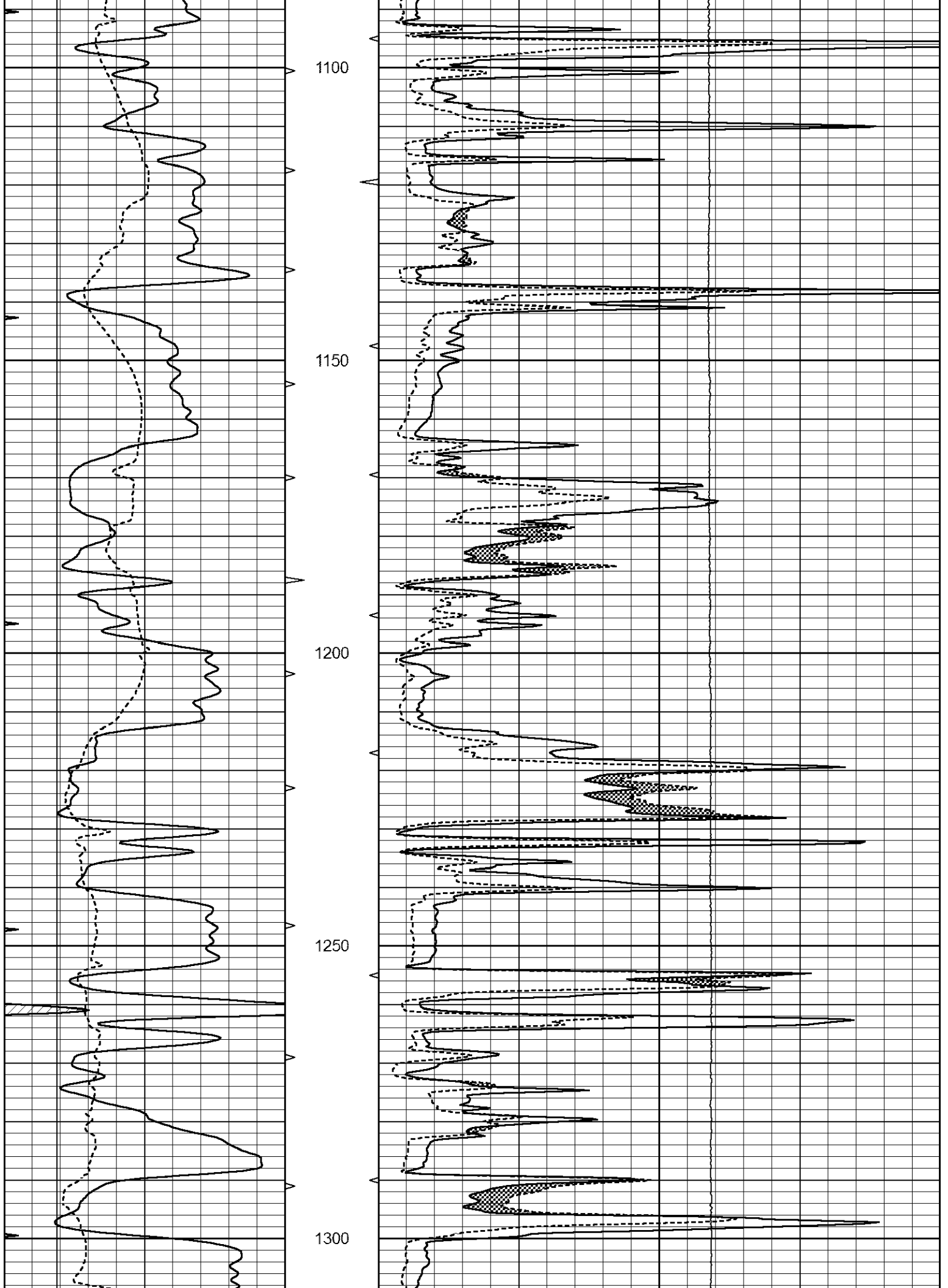
0	GAMMA RAY (GAPI)	150	ABHV	0	MEL1.5 (Ohm-m)	40
6	CALIPER (in)	16	10 (ft3)	0	MEL2.0 (Ohm-m)	40
0	MINMK	20	TBHV	0	LTEN (lb)	5000
			0 (ft3)	10		

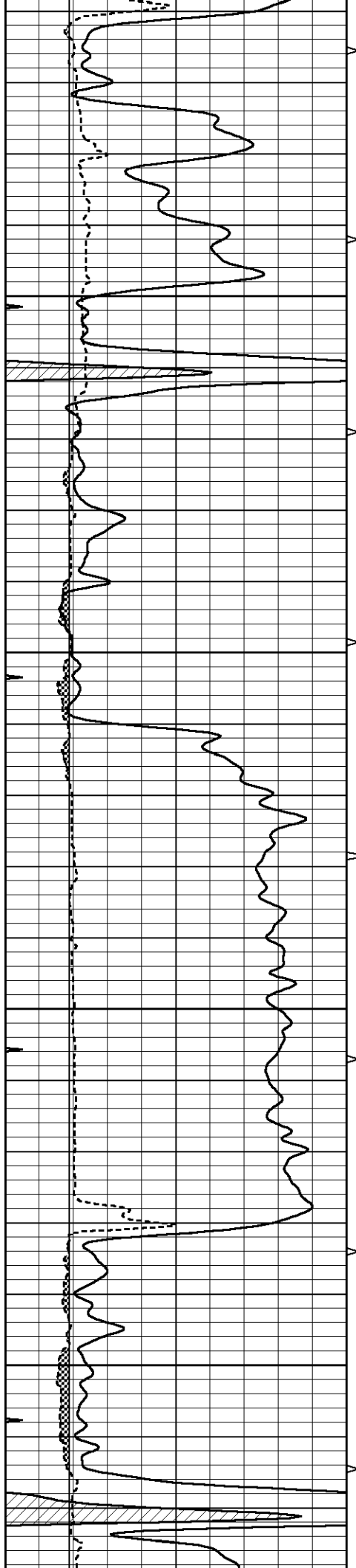










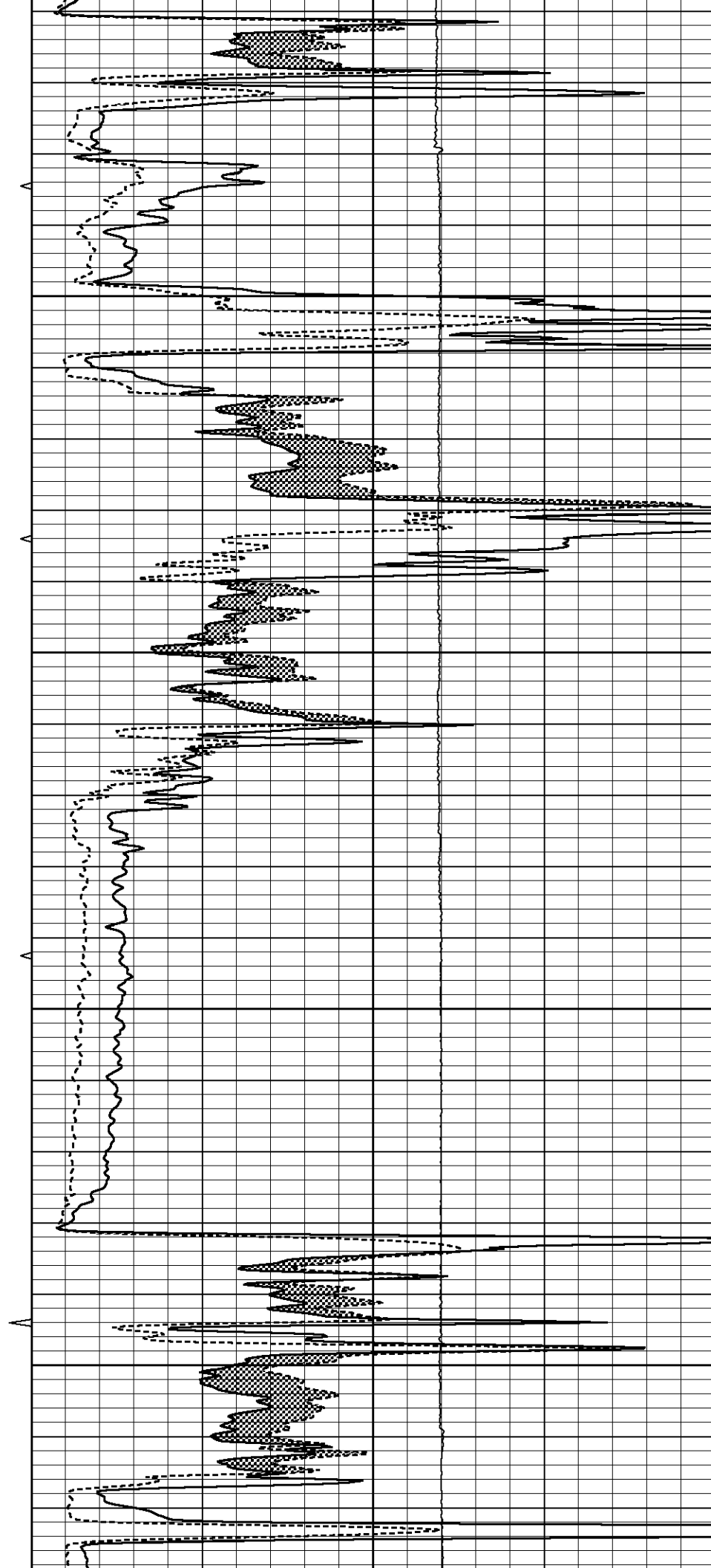


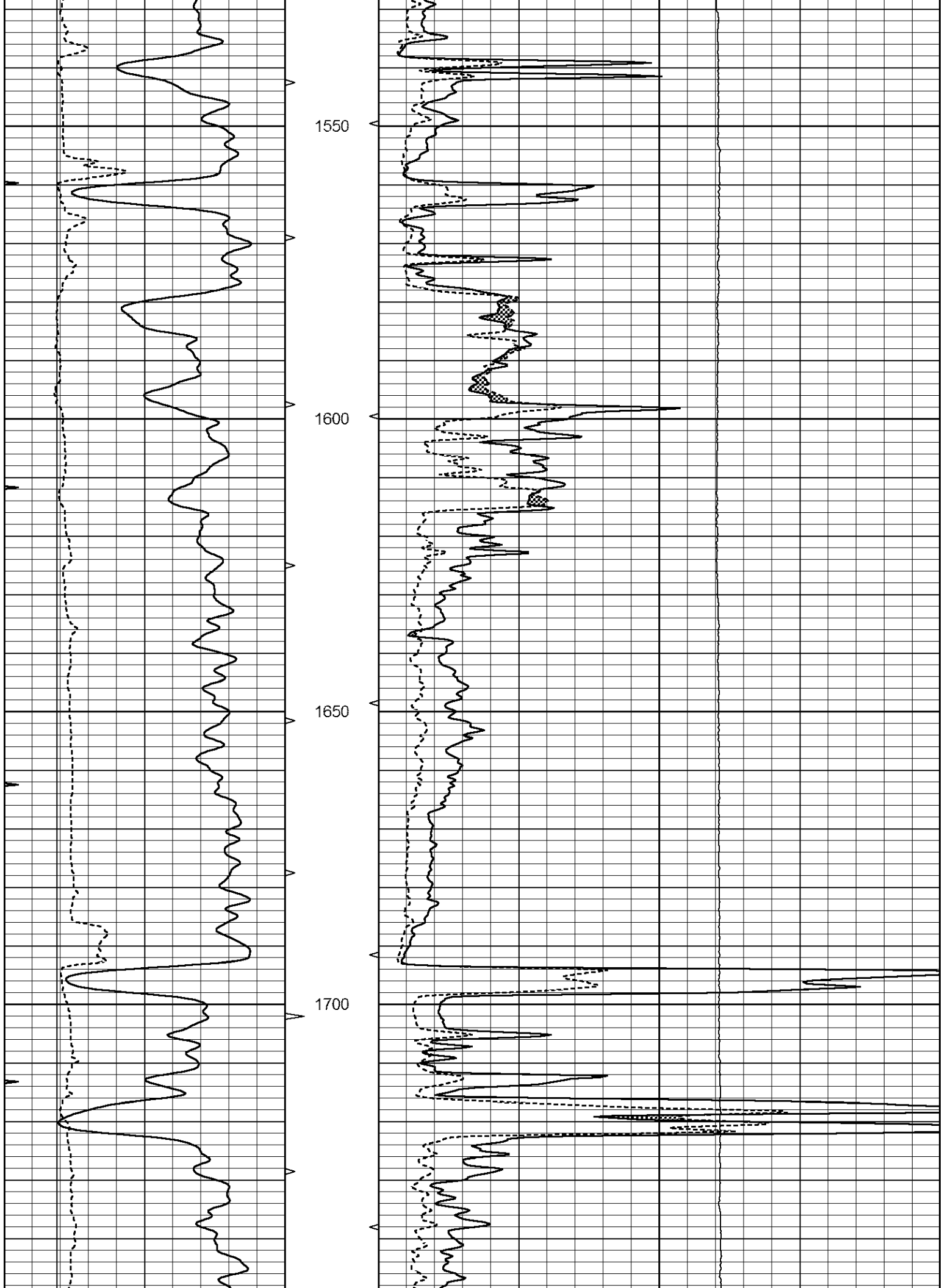
1350

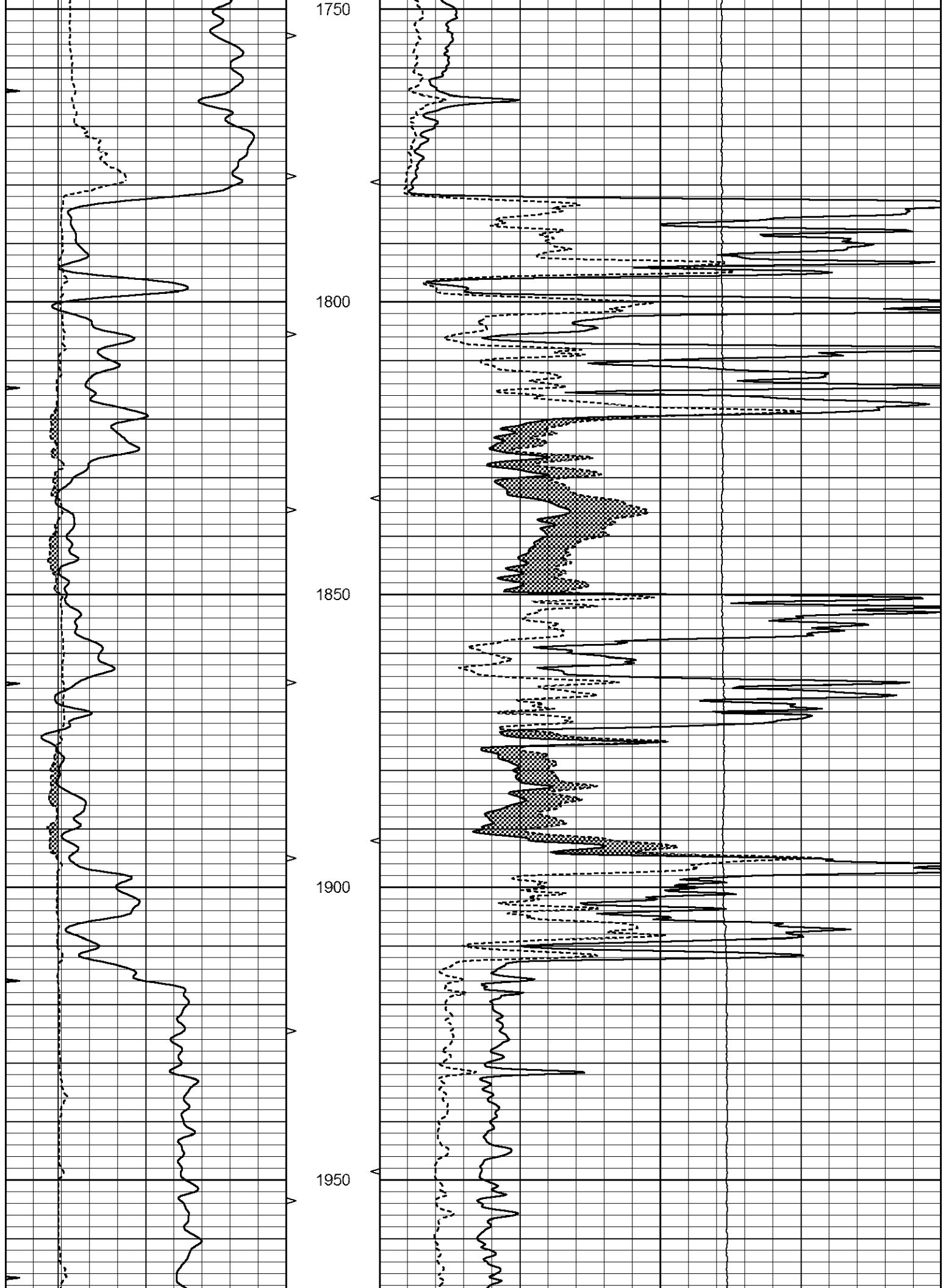
1400

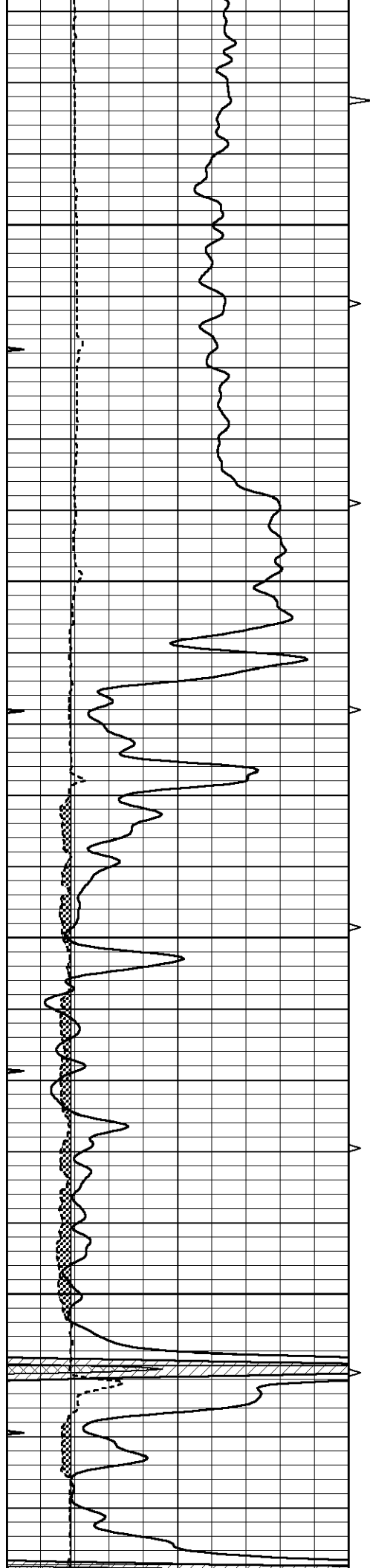
1450

1500







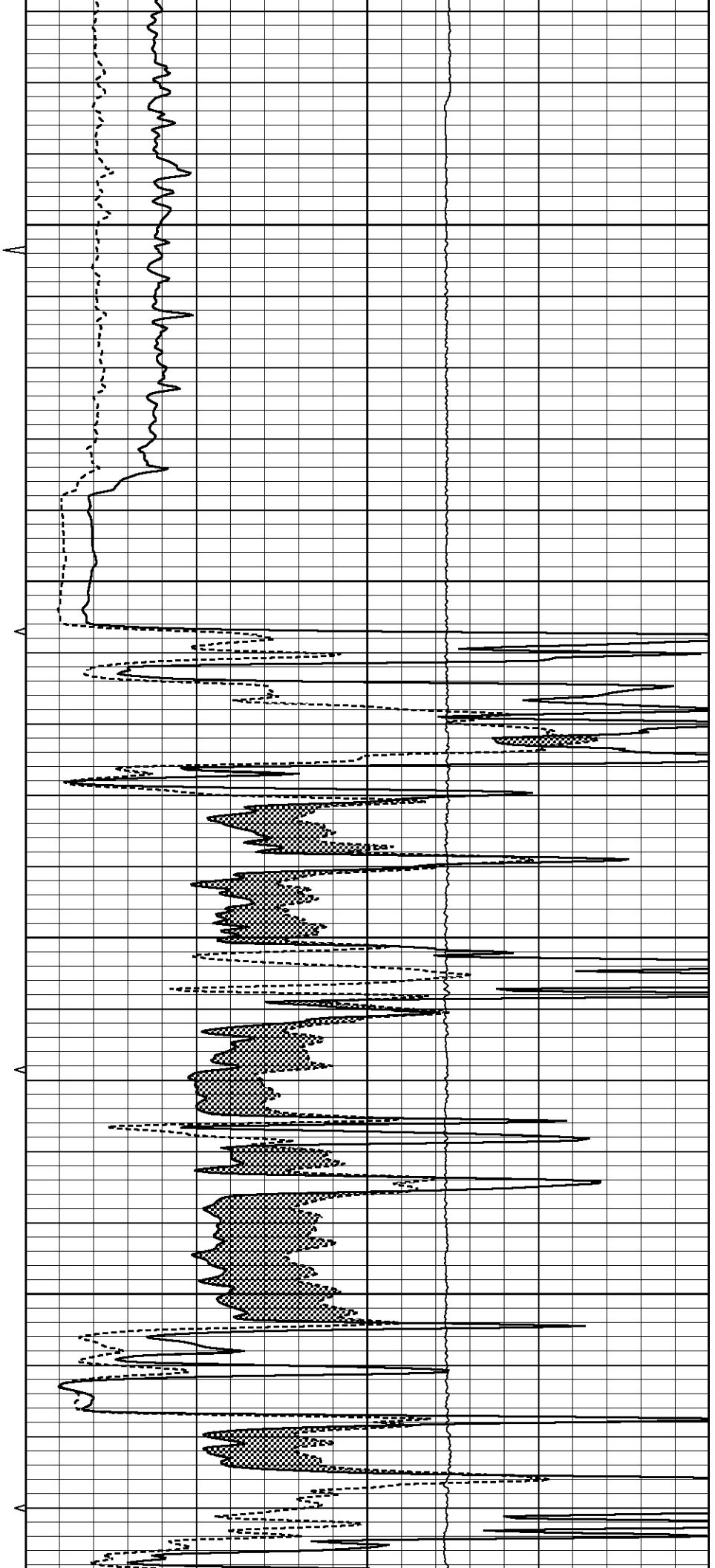


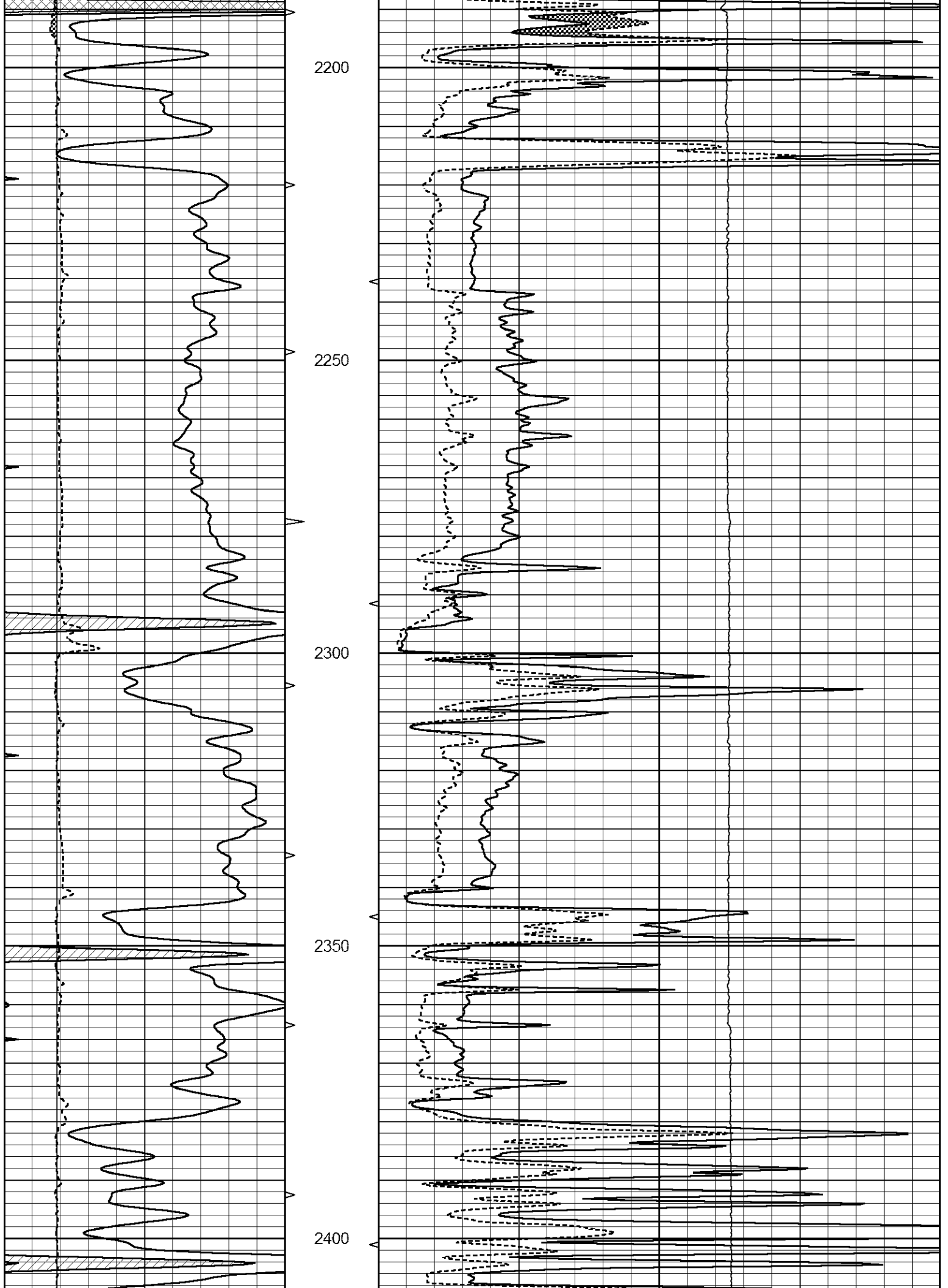
2000

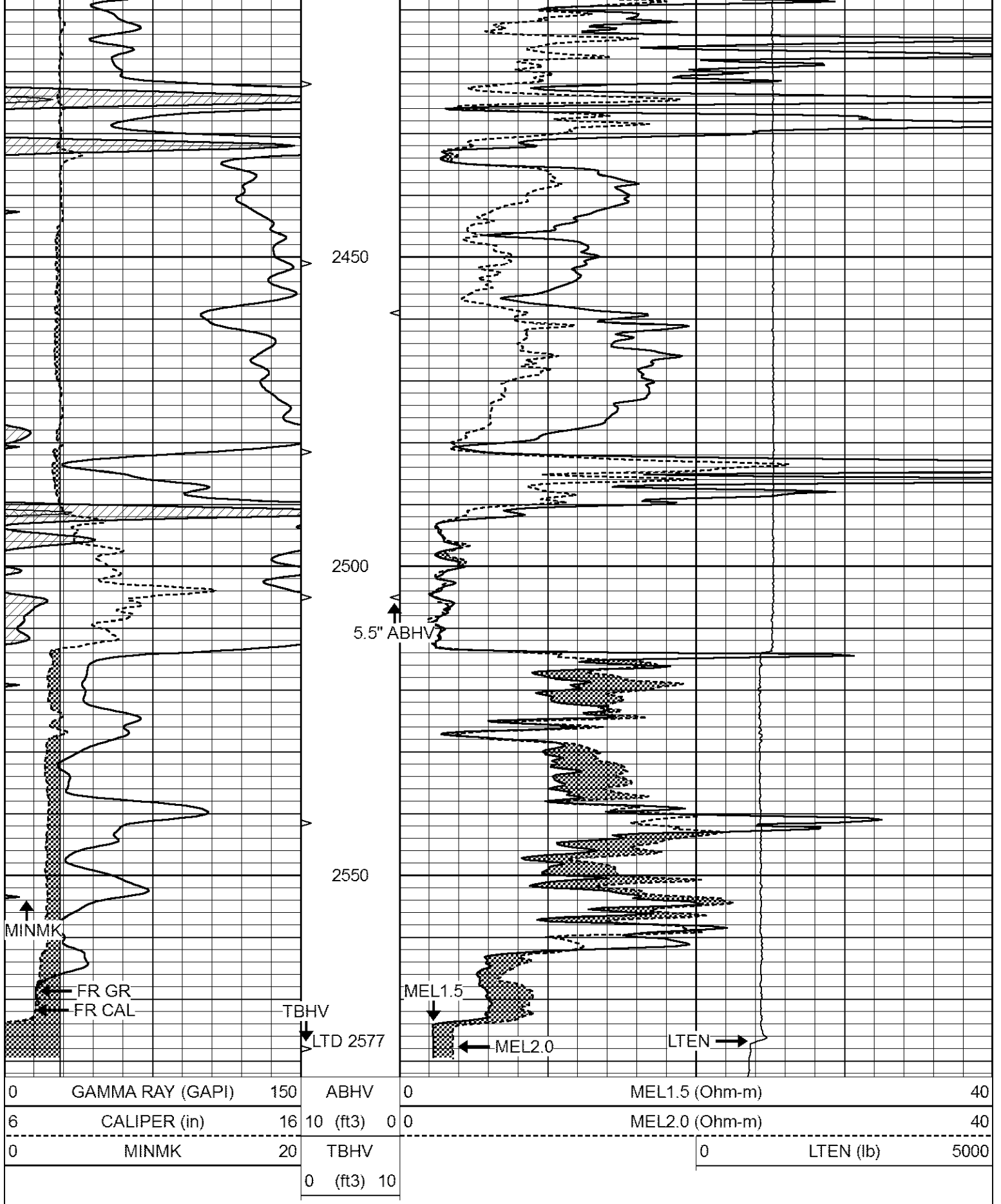
2050

2100

2150



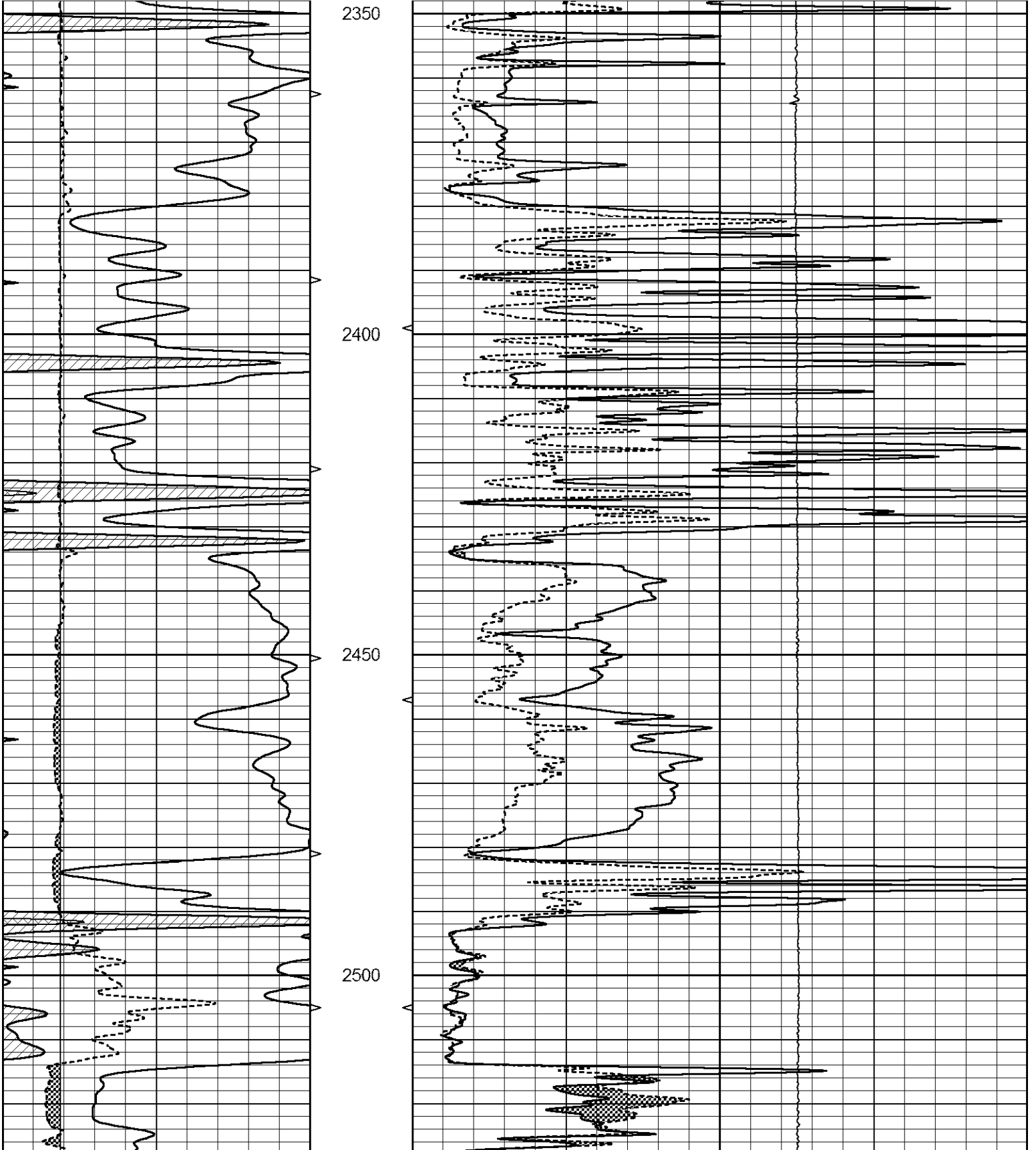


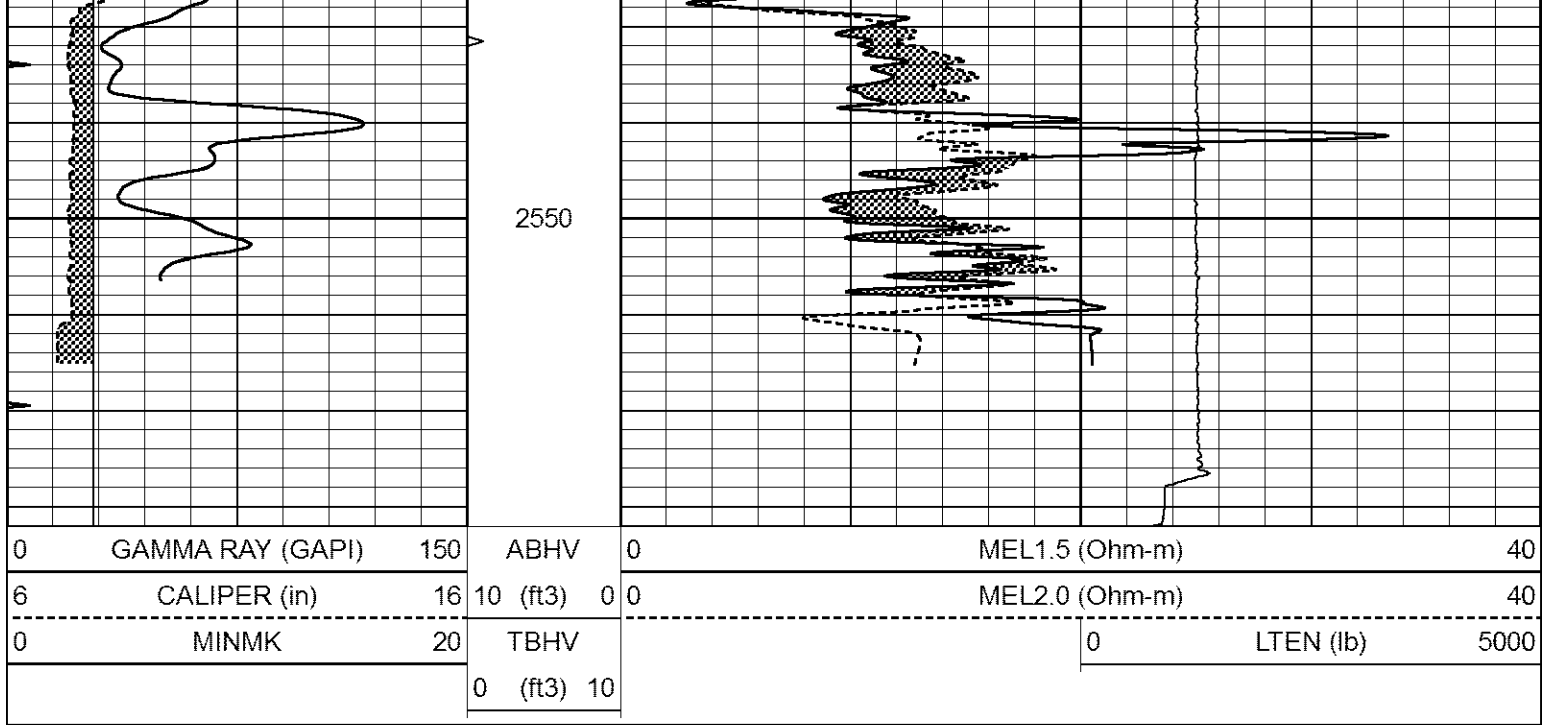


REPEAT SECTION

Database File 7795pe.db
 Dataset Pathname pass9R
 Presentation Format _micro
 Dataset Creation Mon Nov 20 17:22:46 2023
 Charted by Depth in Feet scaled 1:240

0	GAMMA RAY (GAPI)	150	ABHV	0	MEL1.5 (Ohm-m)	40
6	CALIPER (in)	16	10 (ft3)	0	MEL2.0 (Ohm-m)	40
0	MINMK	20	TBHV		0	LTEN (lb)
			0 (ft3)	10		5000





Calibration Report

Database File 7795pe.db
 Dataset Pathname pass10ML
 Dataset Creation Mon Nov 20 17:37:32 2023

MICRO_USR Calibration Report

Serial Number:	070911	
Tool Model:	ProbeL	
Performed:	Fri Sep 15 13:51:55 2023	
Caliper Calibration:	Gain=4.500	Offset=0.725
References	Low Cal 8.000	High Cal 14.000
Readings	1.451	3.049
1.5" Calibration:	Gain=17.000	Offset=0.000
References	Low Cal 0.000	High Cal 20.000
Readings	0.006	1.243
2" Calibration:	Gain=28.000	Offset=-0.400
References	Low Cal 0.000	High Cal 20.000
Readings	0.011	0.957

Microlog Calibration Report

Serial-Model: 070911-ProbeL
 Performed: Sat May 14 04:48:25 2022

	Readings			References			Results	
	Zero	Cal		Zero	Cal		m	b
Normal	0.0002	0.4836	V	0.0000	10.0000	Ohm-m	20.6908	-0.0051
Inverse	0.0018	0.6297	V	0.0000	10.0000	Ohm-m	15.9263	-0.0282
Caliper	0.0000	1.0000	V	0.0000	1.0000	in	1.0000	0.0000

Gamma Ray Calibration Report

Gamma Ray Calibration Report

Serial Number:	070558	
Tool Model:	Probe1	
Performed:	Sat Sep 30 18:38:35 2023	
Calibrator Value:	1.0	GAPI
Background Reading:	0.0	cps
Calibrator Reading:	1.0	cps
Sensitivity:	0.2700	GAPI/cps