



DUAL INDUCTION LOG

Company VESS OIL CORPORATION
 Well RAMSEY #10
 Field EL DORADO
 County BUTLER State KANSAS

Company VESS OIL CORPORATION
 Well RAMSEY #10
 Field EL DORADO
 County BUTLER
 State KANSAS

Location: API #: 15-015-24215-0000
 1420 FSL & 990 FEL
 S2 - SW - NE - SE
 SEC 6 TWP 25S RGE 05E
 Permanent Datum GROUND LEVEL Elevation 1420
 Log Measured From KELLY BUSHING 8' A.G.L
 Drilling Measured From KELLY BUSHING
 Other Services
 CDL/CNL/PE
 MEL/SON
 Elevation
 K.B. 1428
 D.F. 1426
 G.L. 1420

Date	11/20/23
Run Number	ONE
Depth Driller	2580
Depth Logger	2577
Bottom Logged Interval	2575
Top Log Interval	00
Casing Driller	8.625 @ 263
Casing Logger	263
Bit Size	7.875
Type Fluid in Hole	CHEMICAL MUD
Density / Viscosity	9.3/44
PH / Fluid Loss	10.0/7.2
Source of Sample	FLOWLINE
Rm @ Meas. Temp	1.70 @ 65F
Rmt @ Meas. Temp	1.28 @ 65F
Rmc @ Meas. Temp	2.04 @ 65F
Source of Rmf / Rmc	MEASUREMENT
Rm @ BHT	1.07 @ 103F
Time Circulation Stopped	2 HOURS
Time Logger on Bottom	1:00 P.M.
Maximum Recorded Temperature	103F
Equipment Number	3802
Location	HAYS, KANSAS
Recorded By	COLE ROBBEN
Witnessed By	ROGER MARTIN

<<< Fold Here >>>

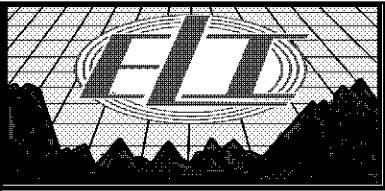
All interpretations are opinions based on inferences from electrical or other measurements and we cannot and do not guarantee the accuracy or correctness of any interpretation, and we shall not, except in the case of gross or willful negligence on our part, be liable or responsible for any loss, costs, damages, or expenses incurred or sustained by anyone resulting from any interpretation made by any of our officers, agents or employees. These interpretations are also subject to our general terms and conditions set out in our current Price Schedule.

Comments

THANK YOU FOR USING ELI WIRELINE SERVICES, HAYS, KS. (785) 628-6395

DIRECTIONS:

FROM WEST SIDE OF EL DORADO, KANSAS ON HIGHWAY 254/196 GO NORTH 5 1/2 MILES
 NORTH ON HIGHWAY 196 TO NW 50TH STREET, 1 1/2 MILES EAST, NORTH INTO



MAIN SECTION

Database File 7795pe.db
 Dataset Pathname pass4M1
 Presentation Format _dil2
 Dataset Creation Mon Nov 20 16:48:13 2023
 Charted by Depth in Feet scaled 1:600

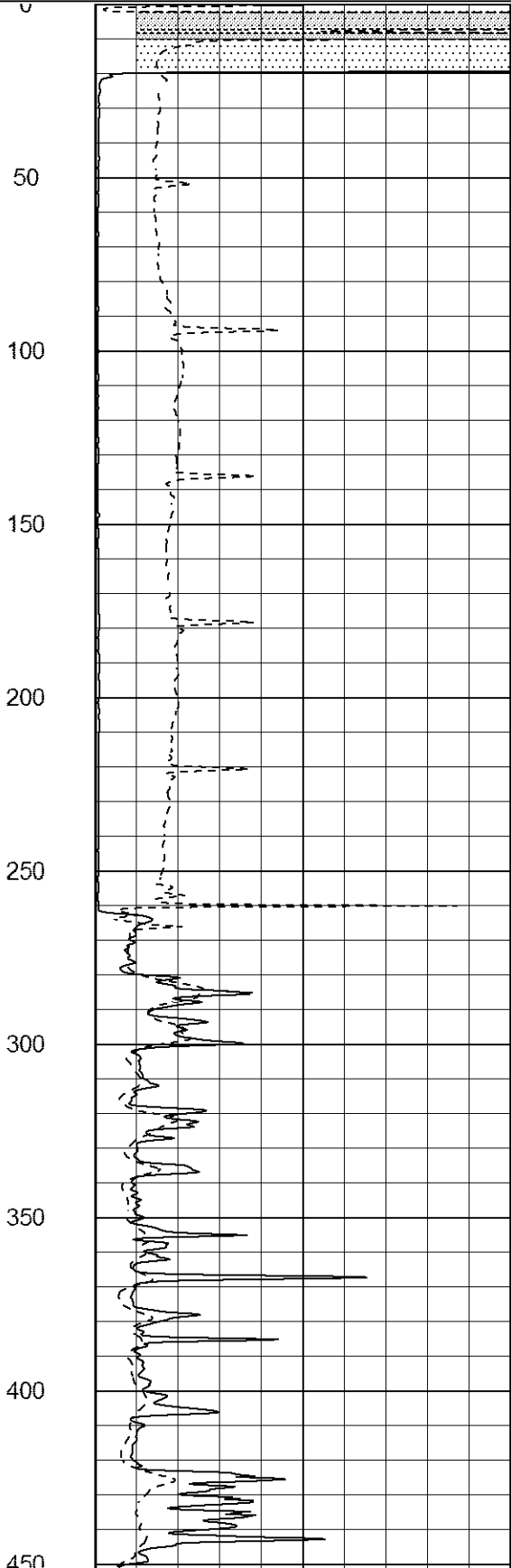
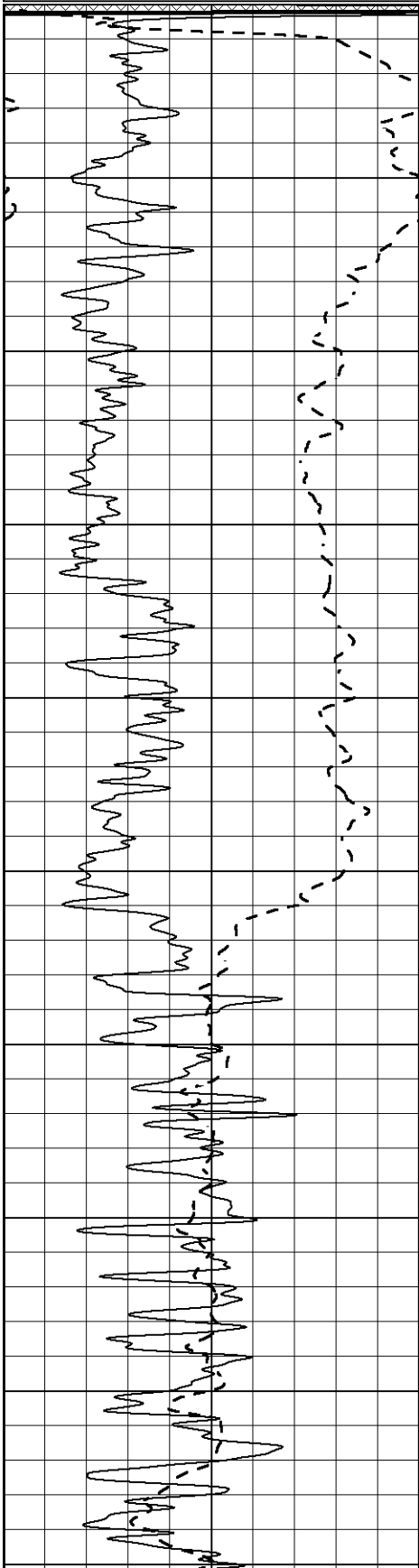
0	Gamma Ray (GAPI)	150
-100	SP (mV)	100

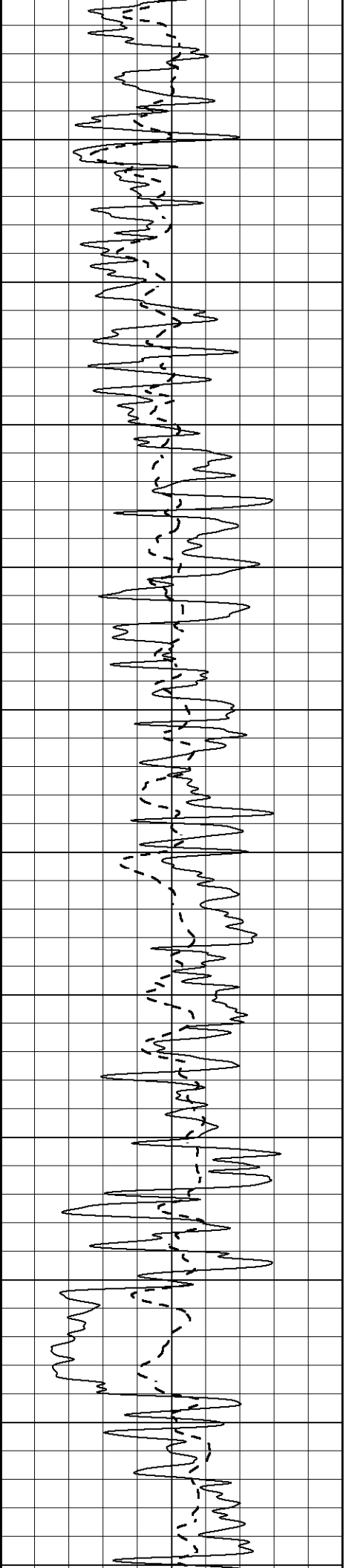
0	RLL3 (Ohm-m)	50
---	--------------	----

0	Deep Induction (Ohm-m)	50
---	------------------------	----

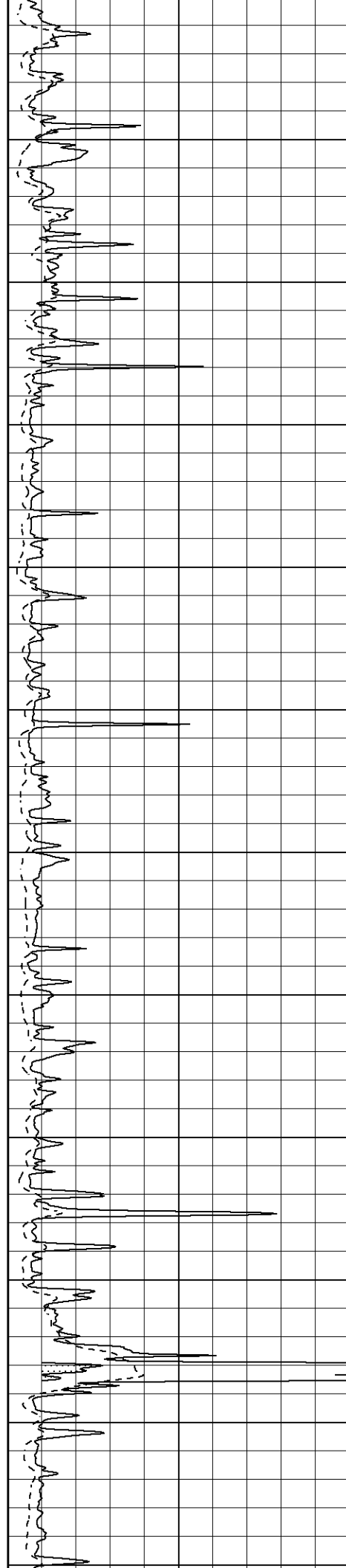
50	RILD X10 (Ohm-m)	500
----	------------------	-----

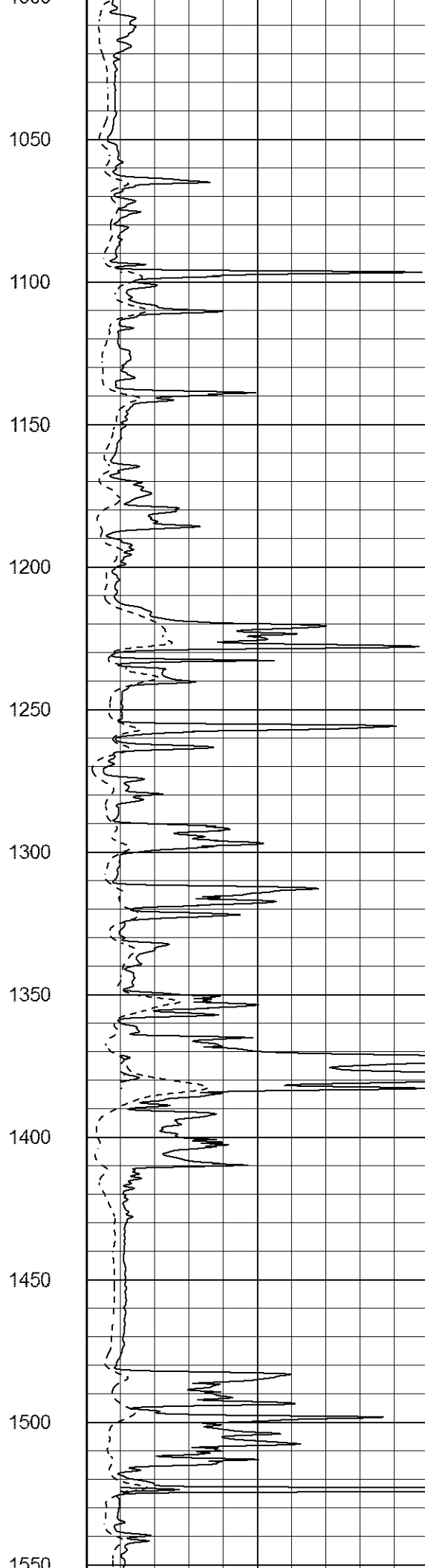
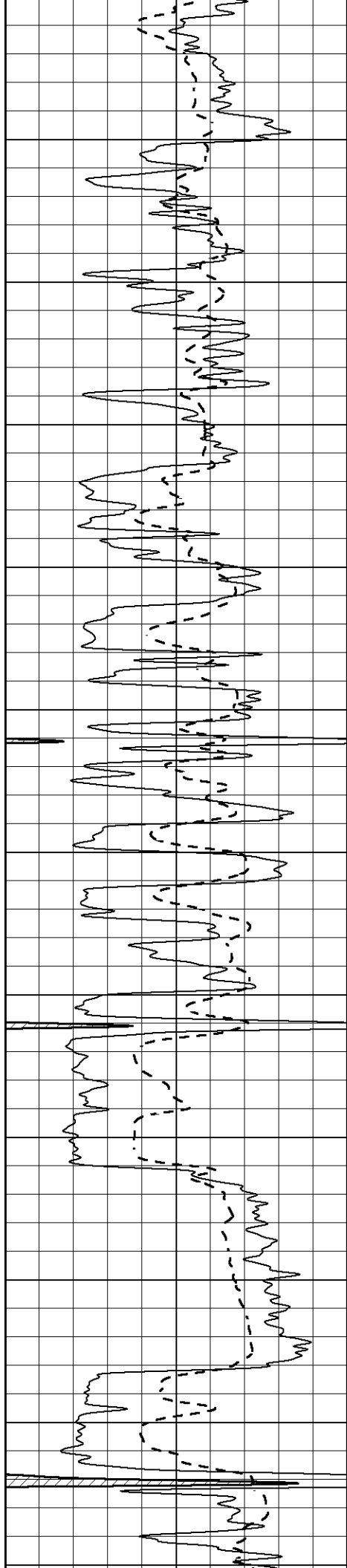
50	RLL3 X10 (Ohm-m)	500
----	------------------	-----

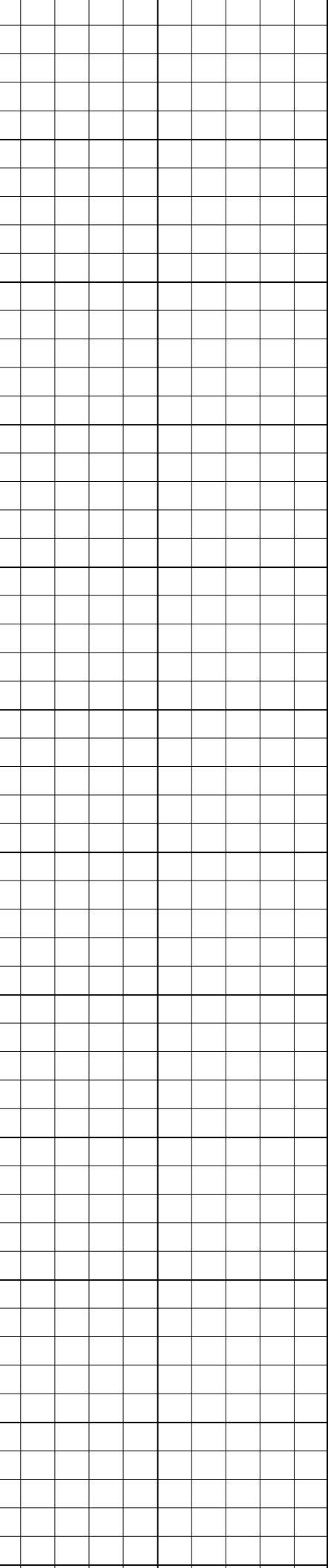
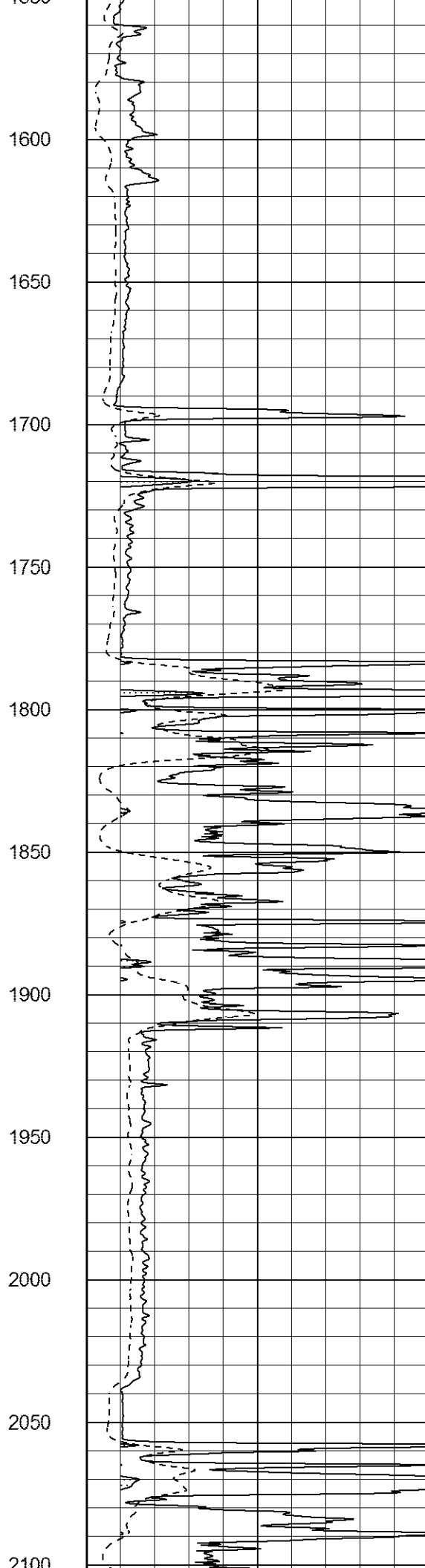
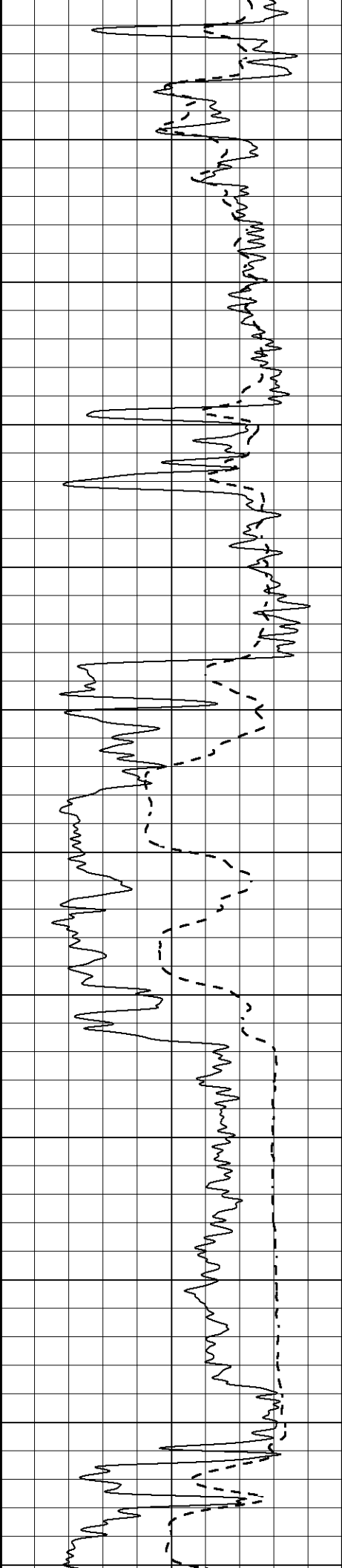


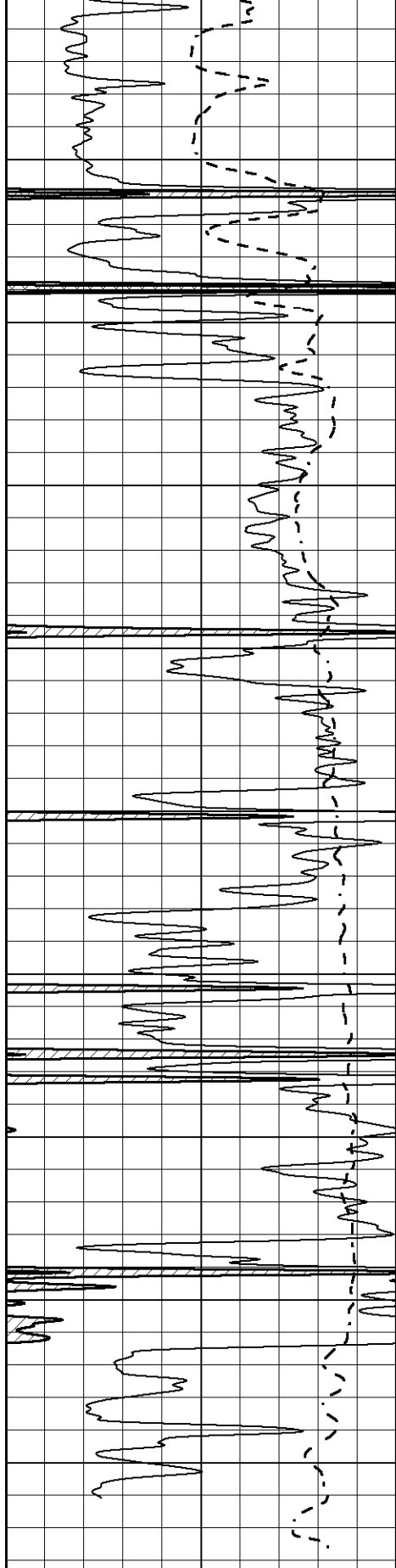


100
500
550
600
650
700
750
800
850
900
950
1000

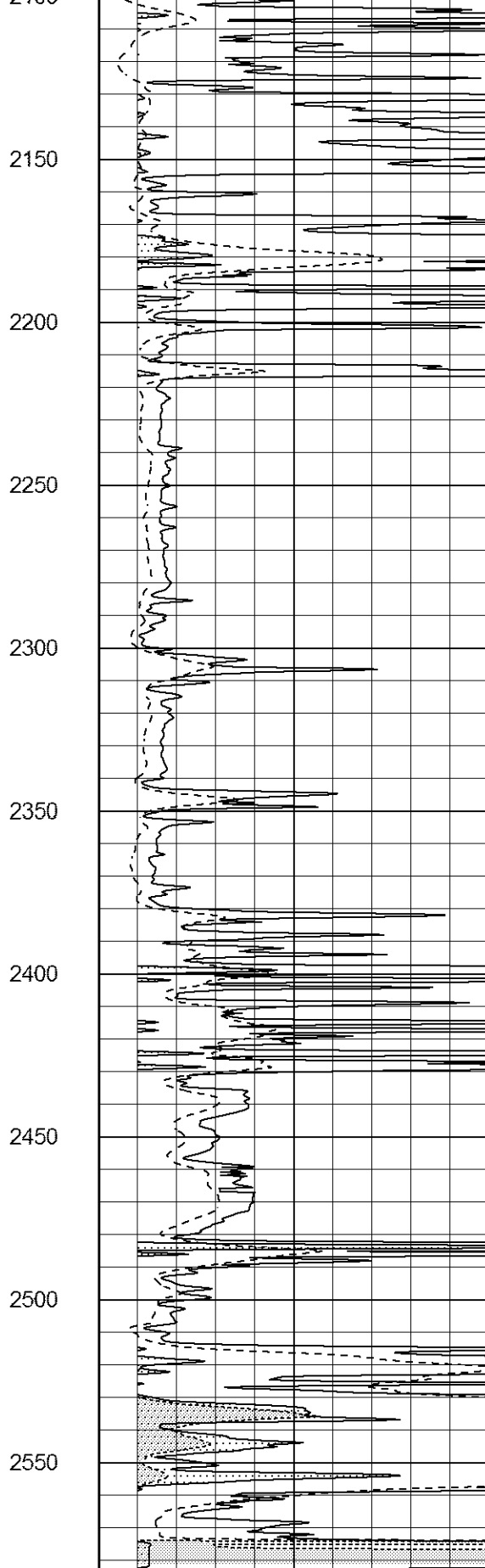




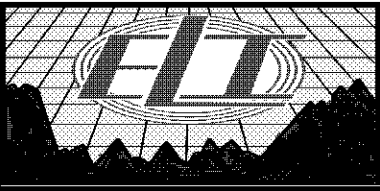




0	Gamma Ray (GAPI)	150
-100	SP (mV)	100



0	RLL3 (Ohm-m)	50
0	Deep Induction (Ohm-m)	50
50	RILD X10 (Ohm-m)	500
50	RLL3 X10 (Ohm-m)	500

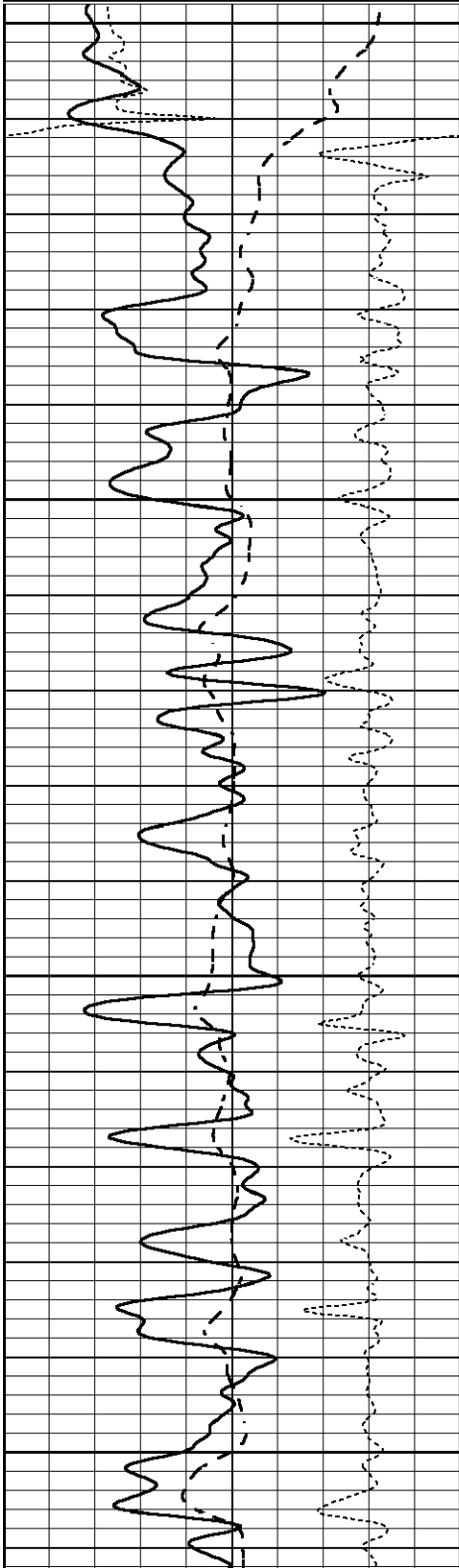


MAIN SECTION

Database File 7795pe.db
Dataset Pathname pass4M1
Presentation Format _dil
Dataset Creation Mon Nov 20 16:48:13 2023
Charted by Depth in Feet scaled 1:240

0	GAMMA RAY (GAPI)	150
-100	SP (mV)	100
-250	Rxo/Rt	50

0.2	SHALLOW GUARD (Ohm-m)	2000
0.2	MEDIUM INDUCTION (Ohm-m)	2000
0.2	DEEP INDUCTION (Ohm-m)	2000

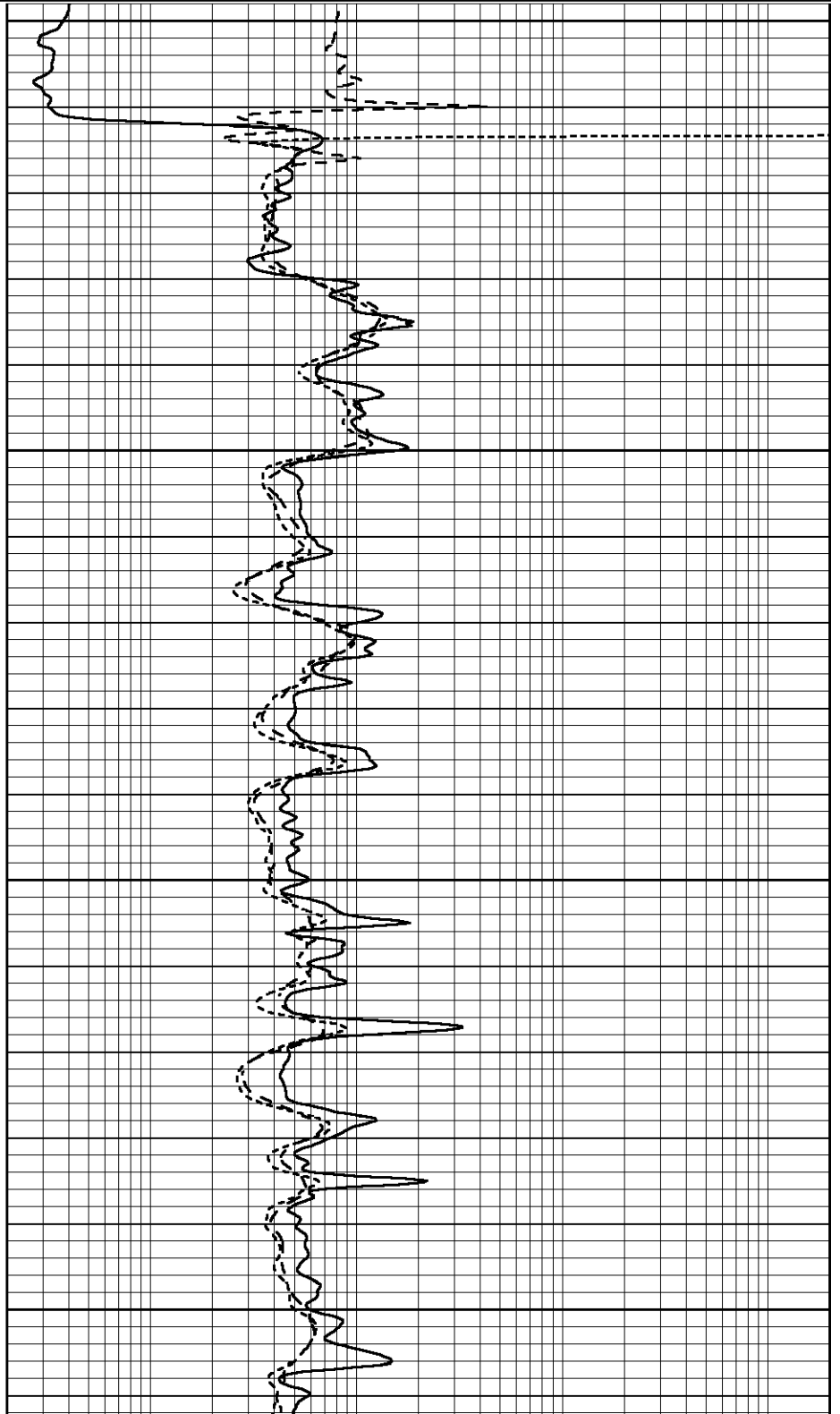


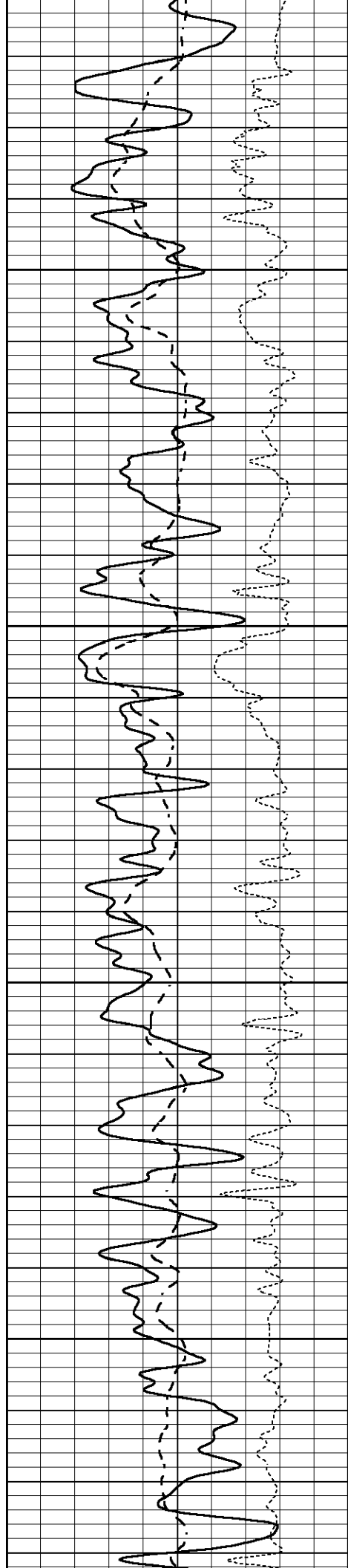
250

300

350

400



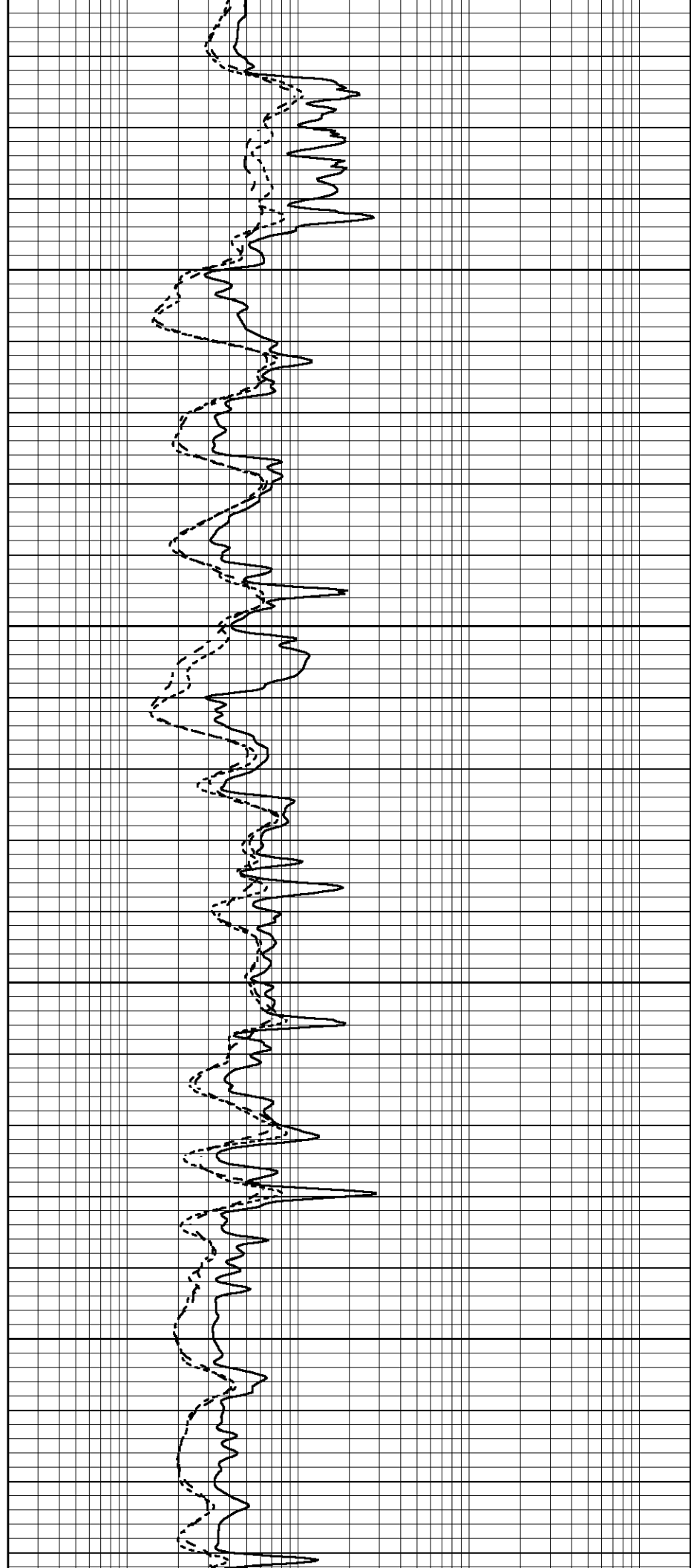


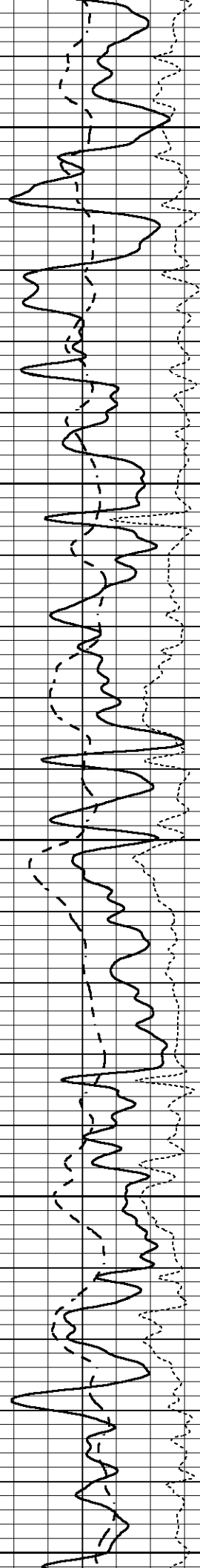
450

500

550

600





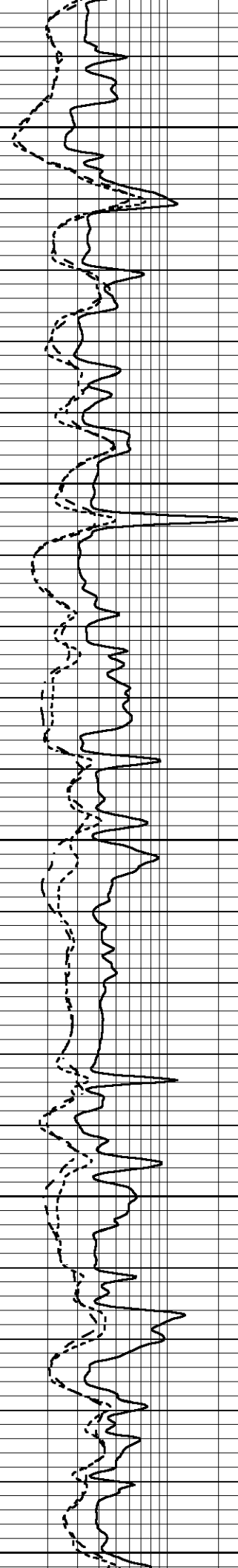
650

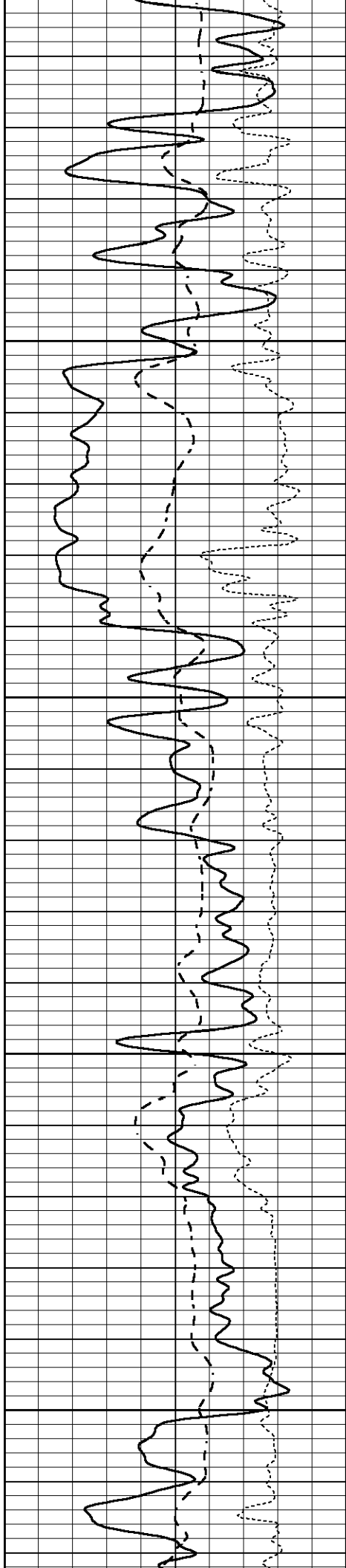
700

750

800

850



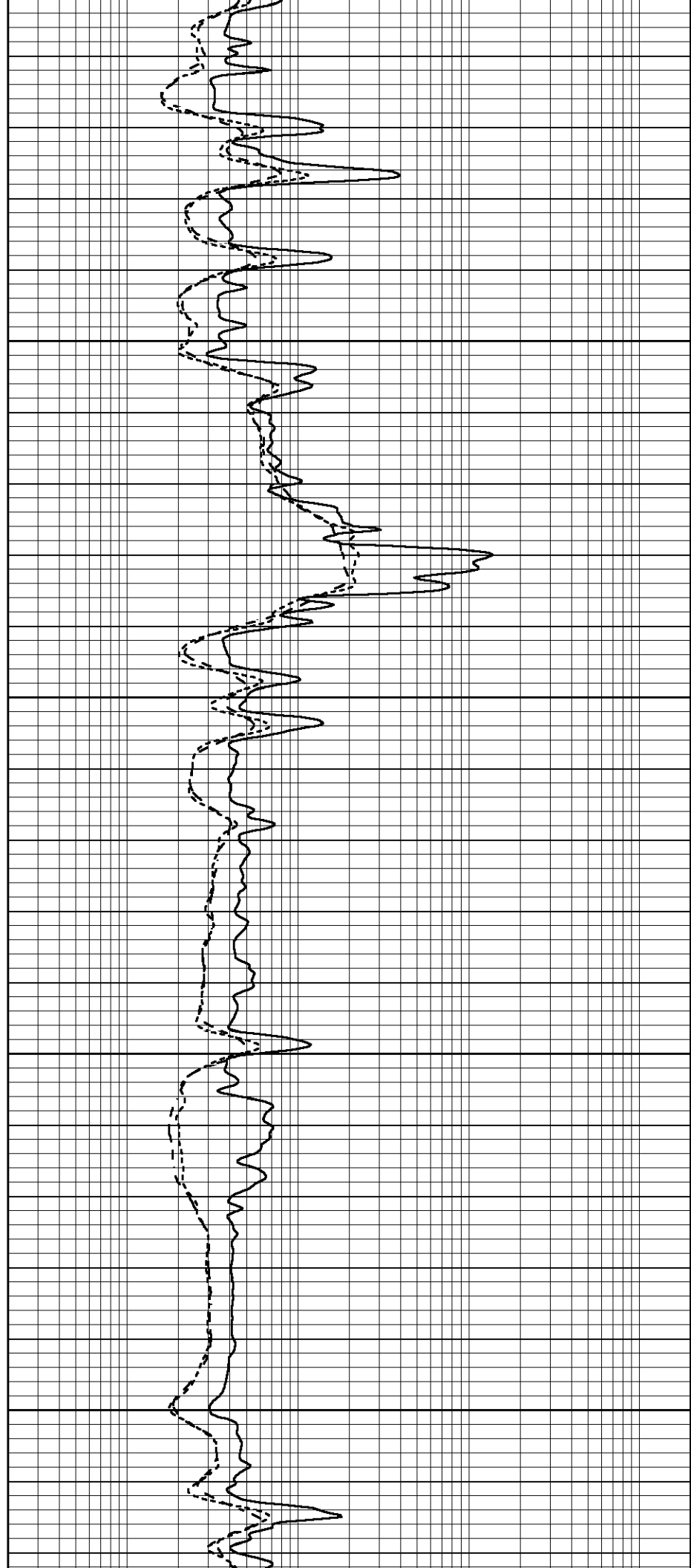


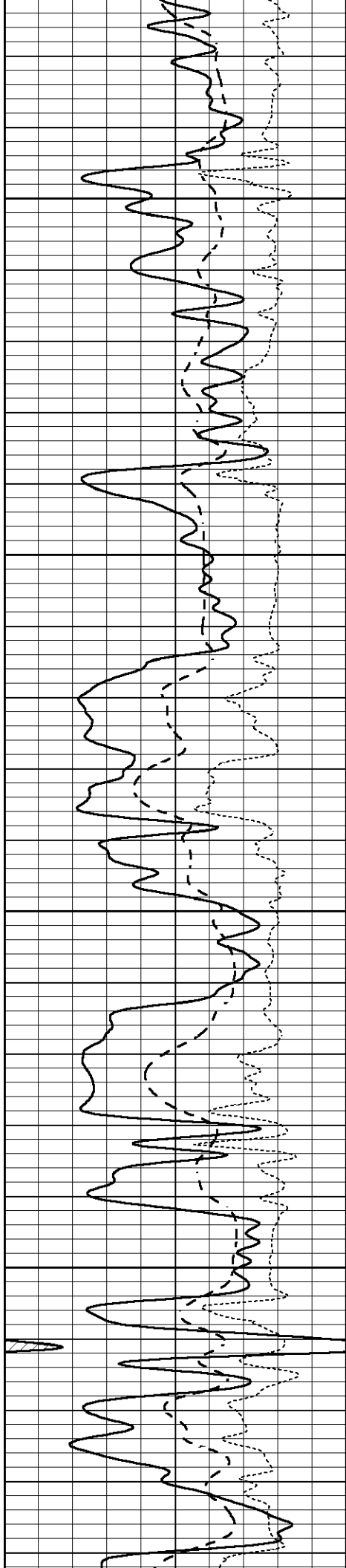
900

950

1000

1050



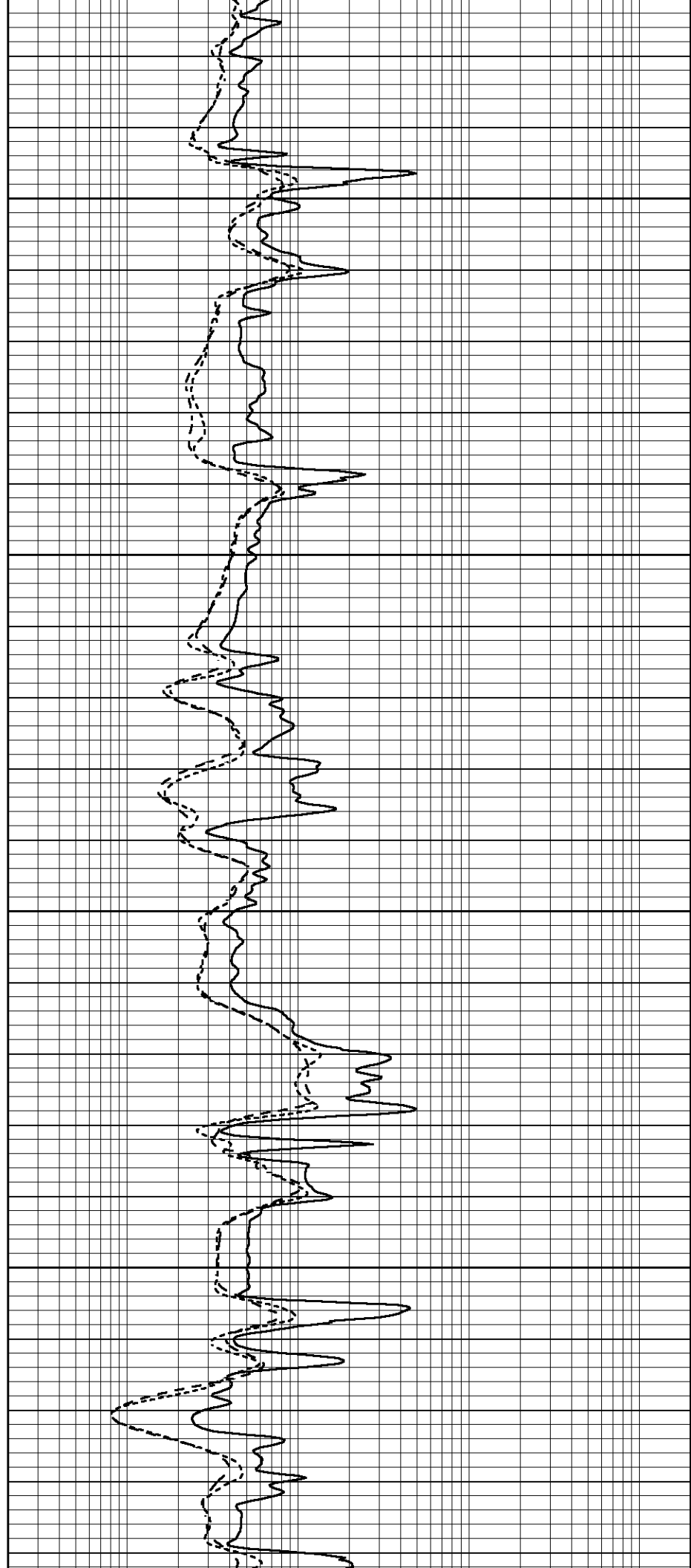


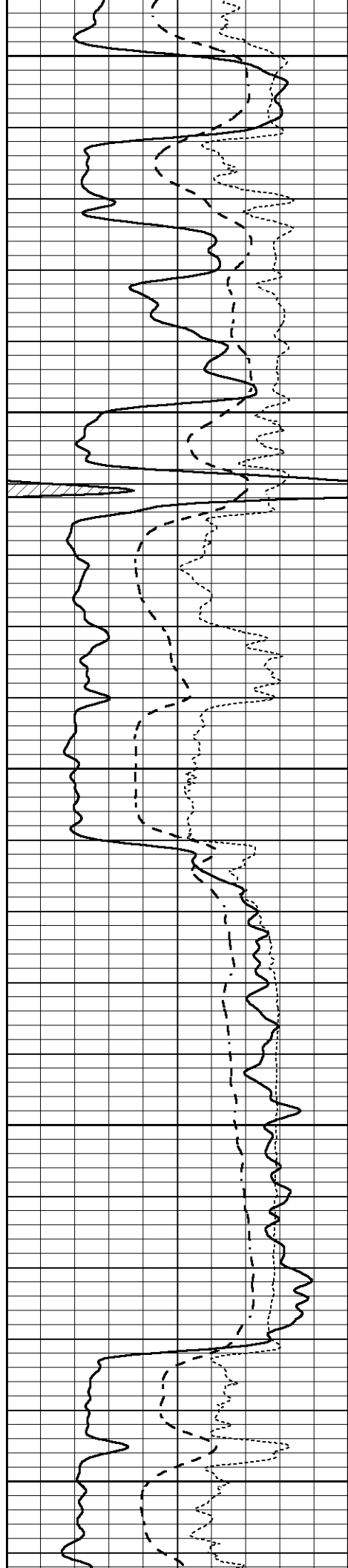
1100

1150

1200

1250





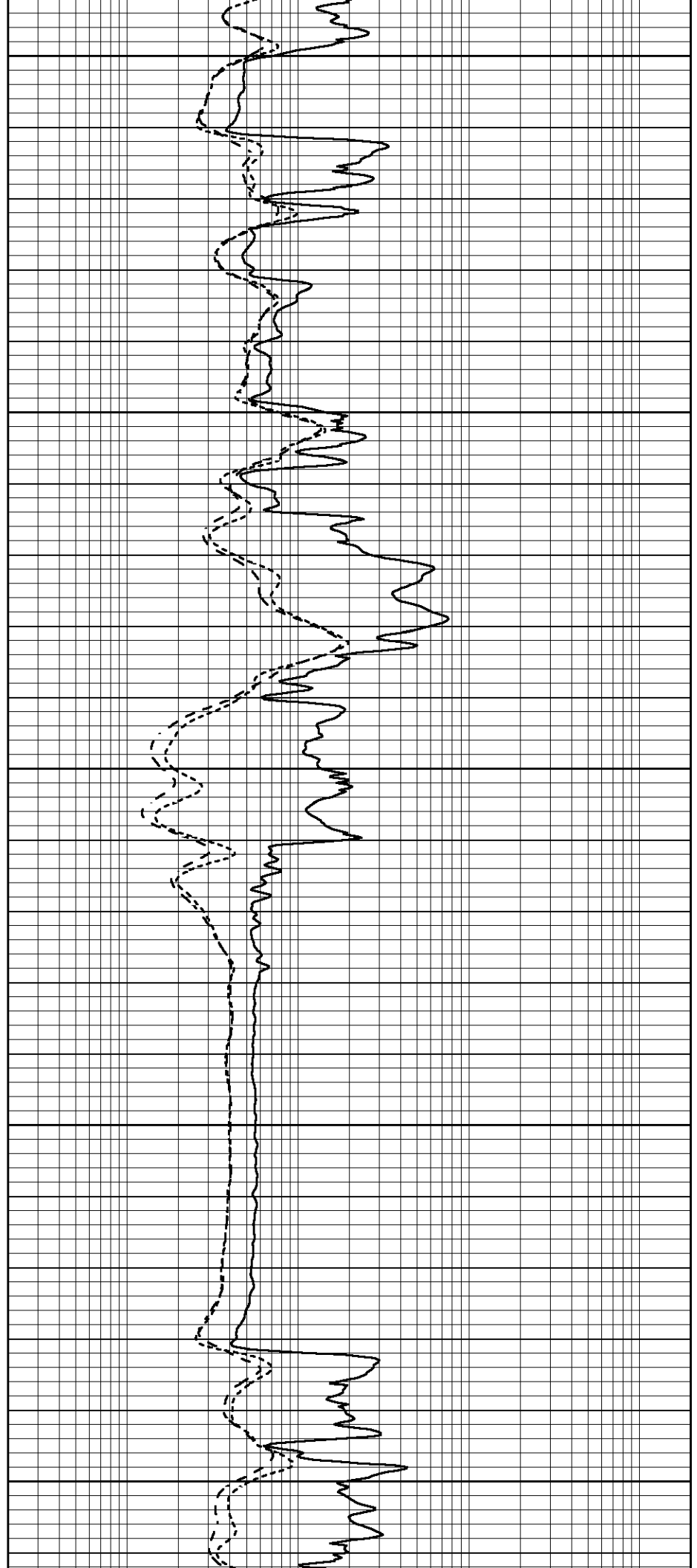
1300

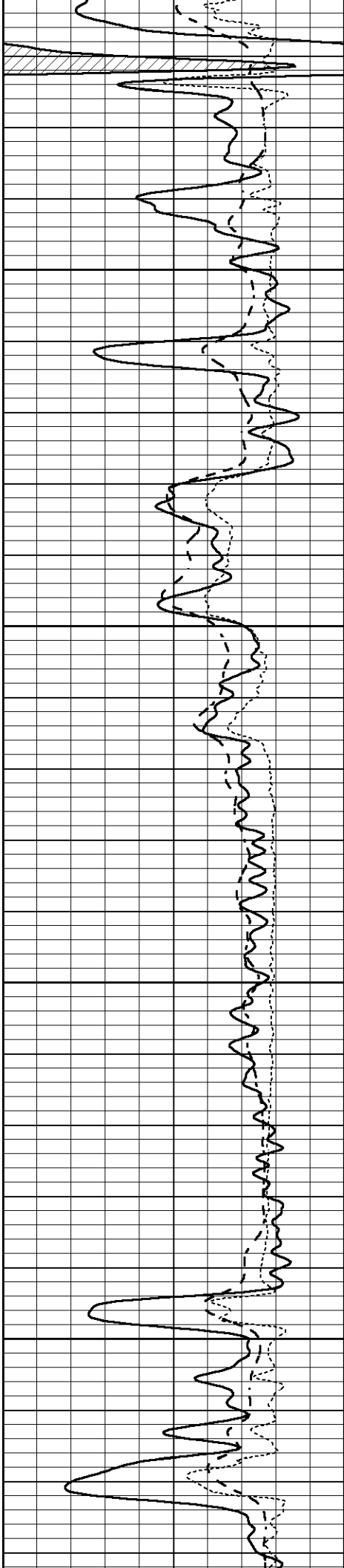
1350

1400

1450

1500



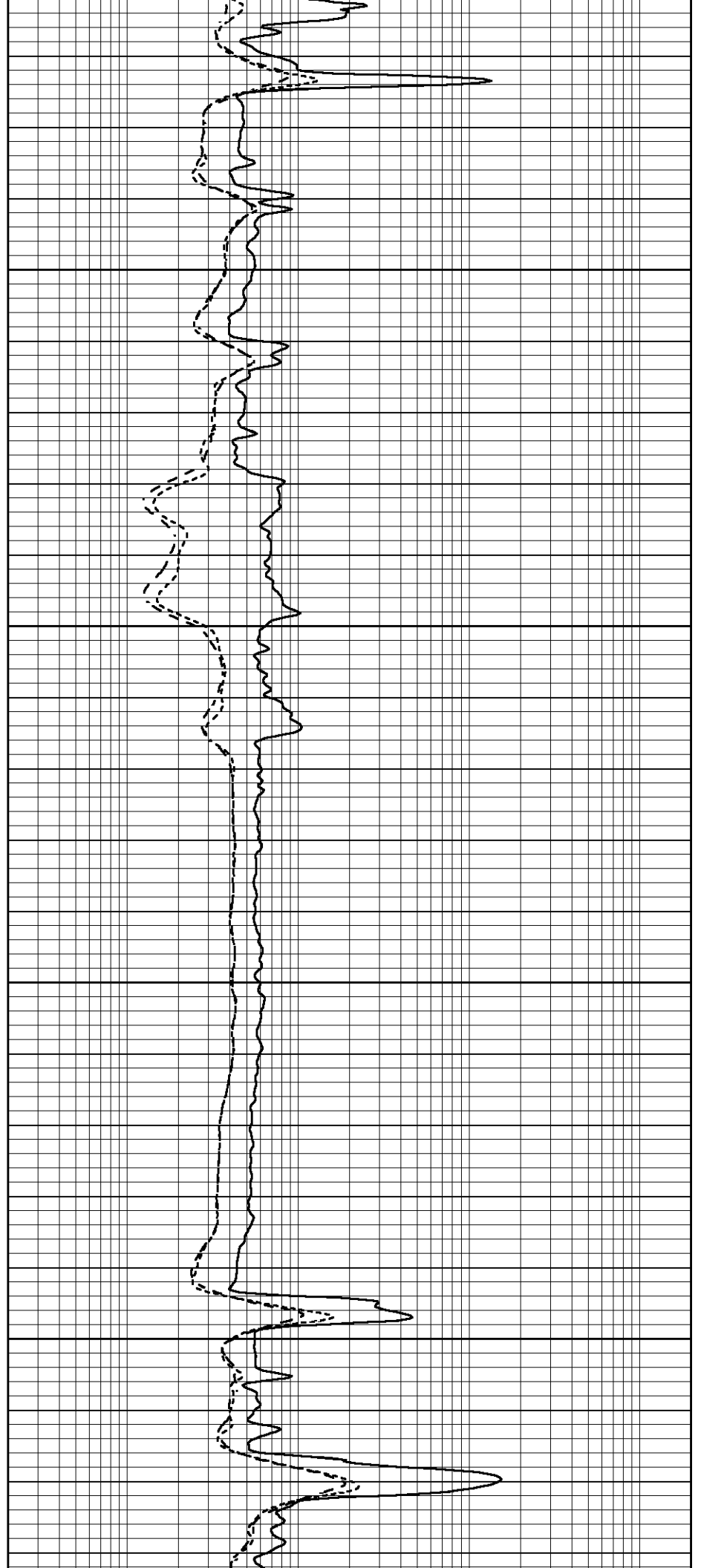


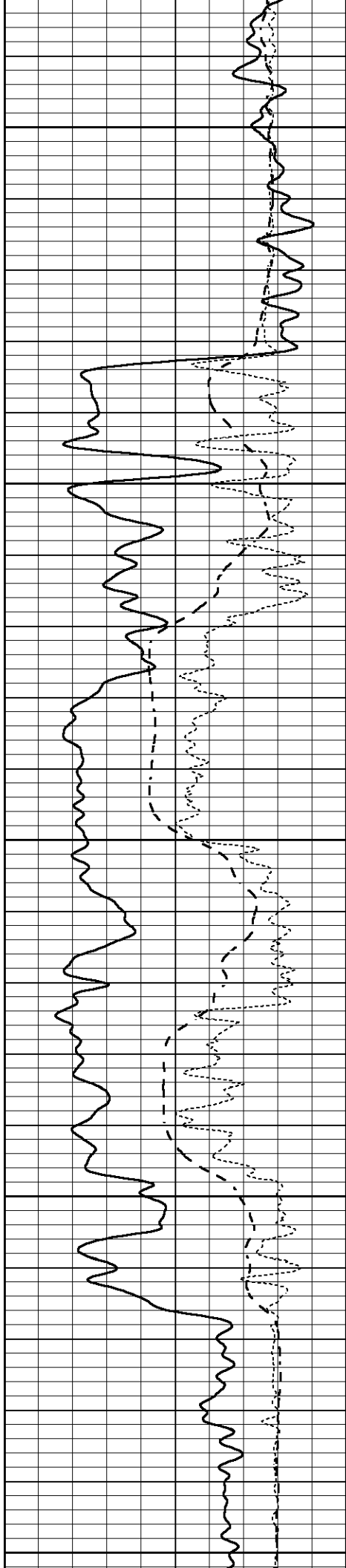
1550

1600

1650

1700





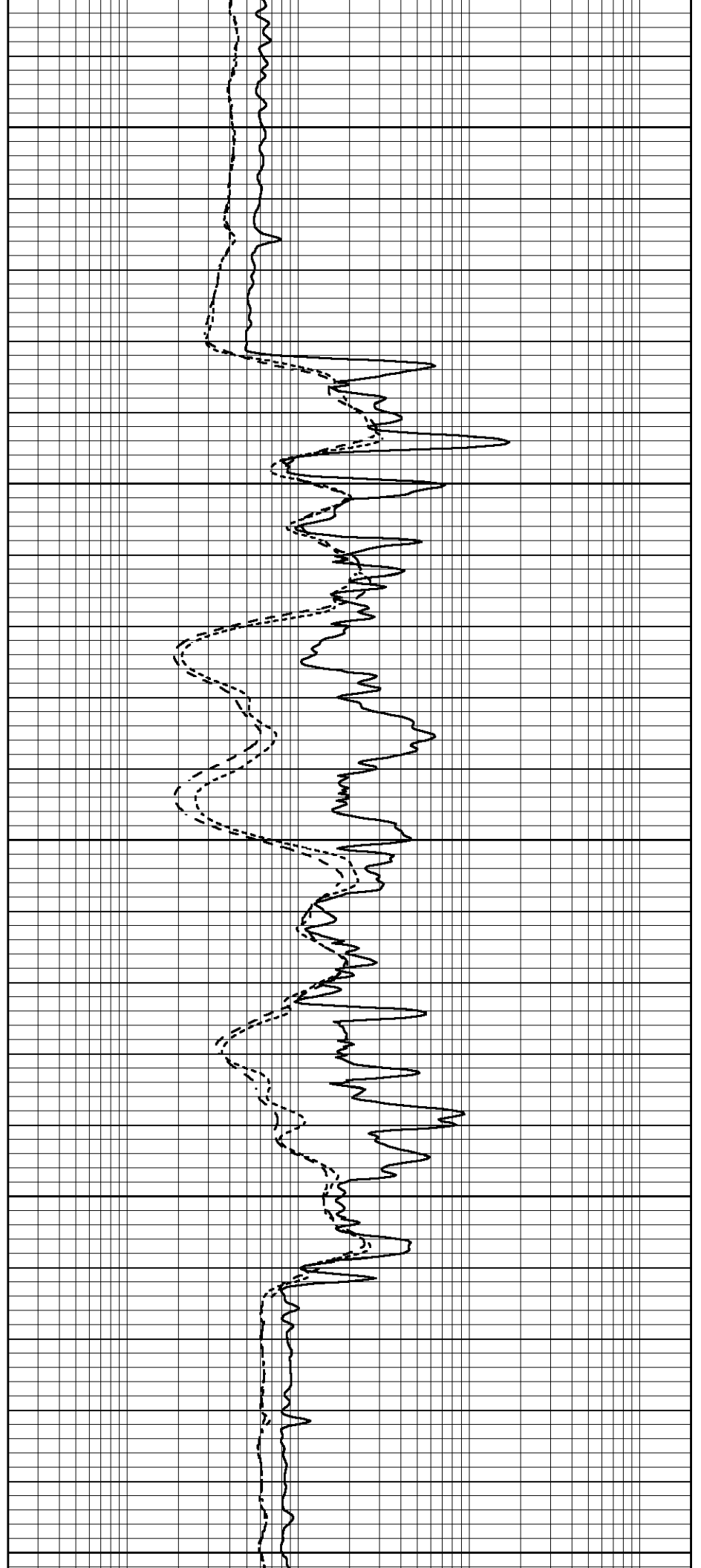
1750

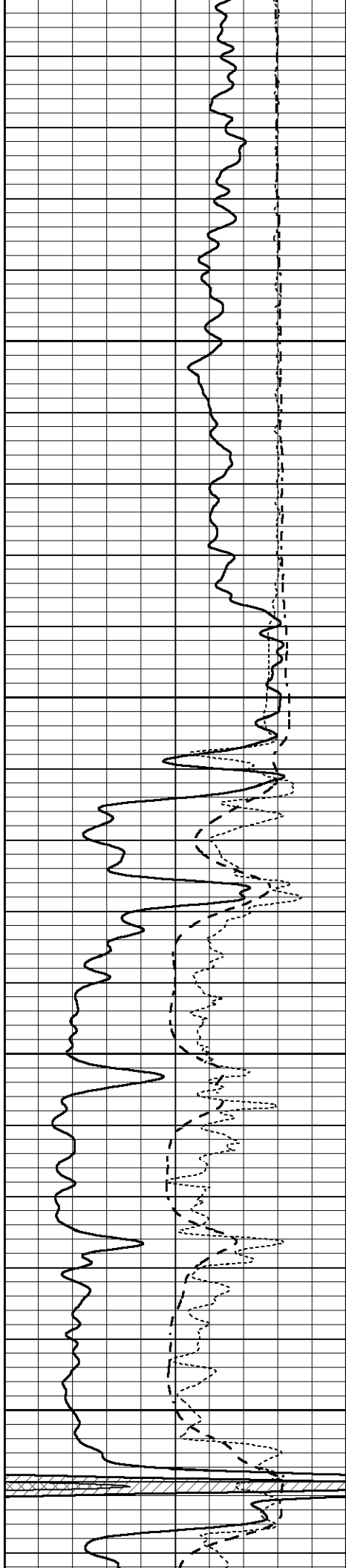
1800

1850

1900

1950



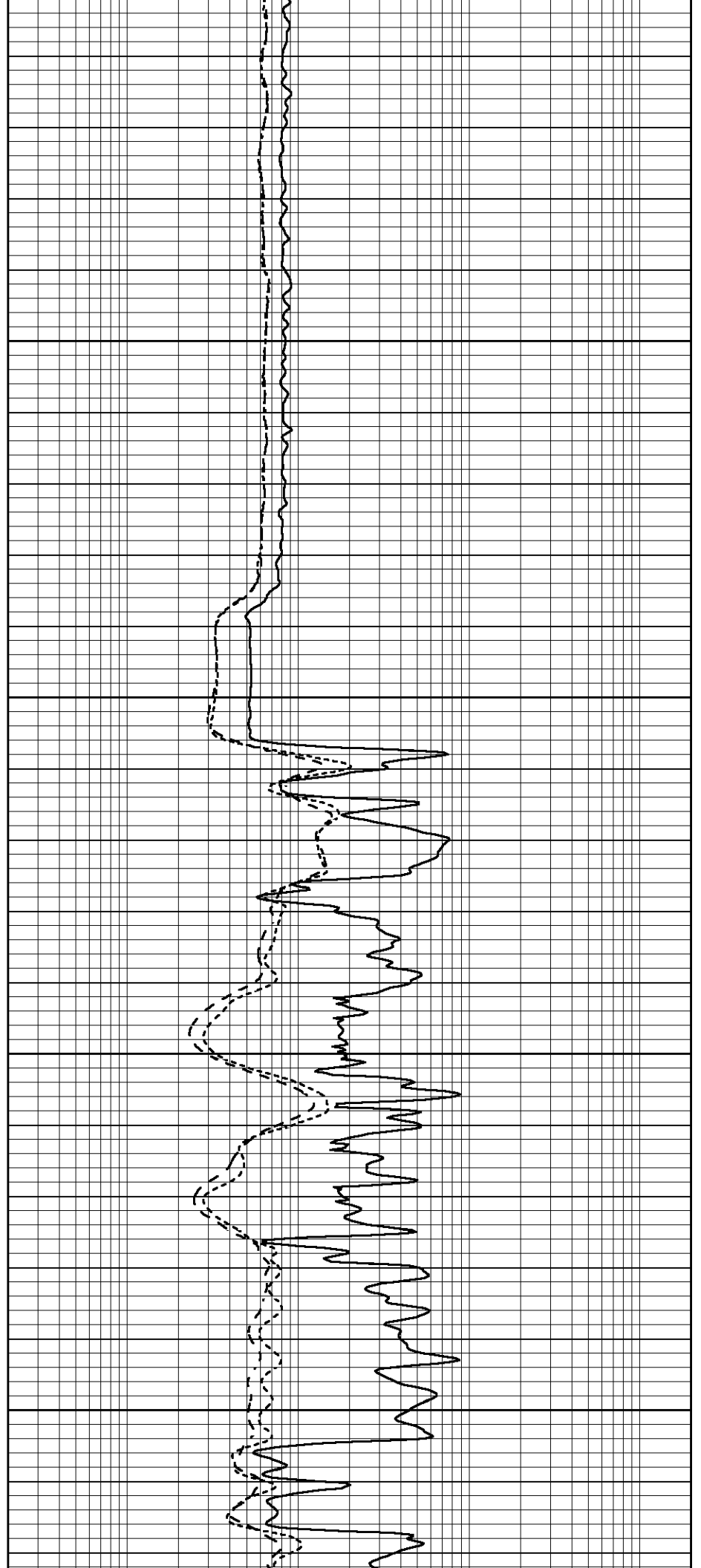


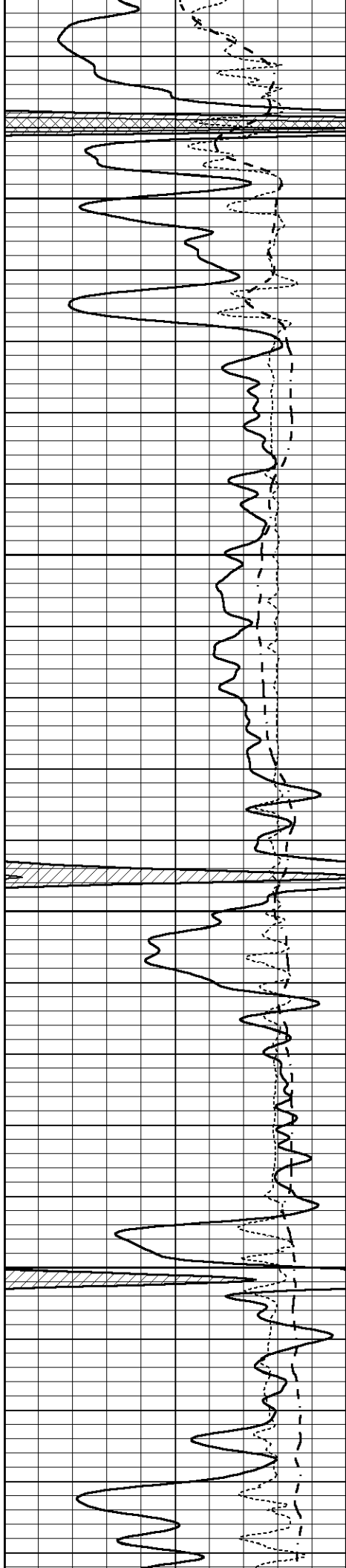
2000

2050

2100

2150



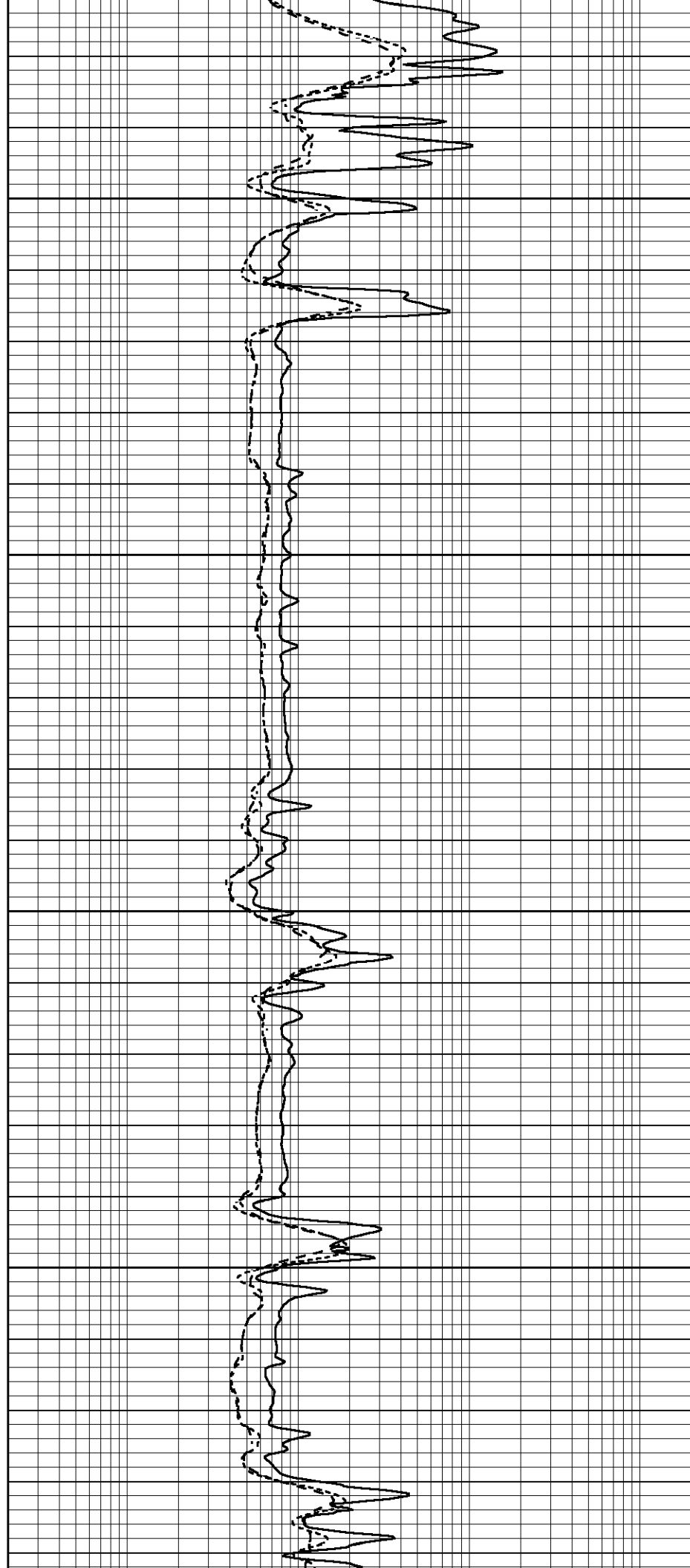


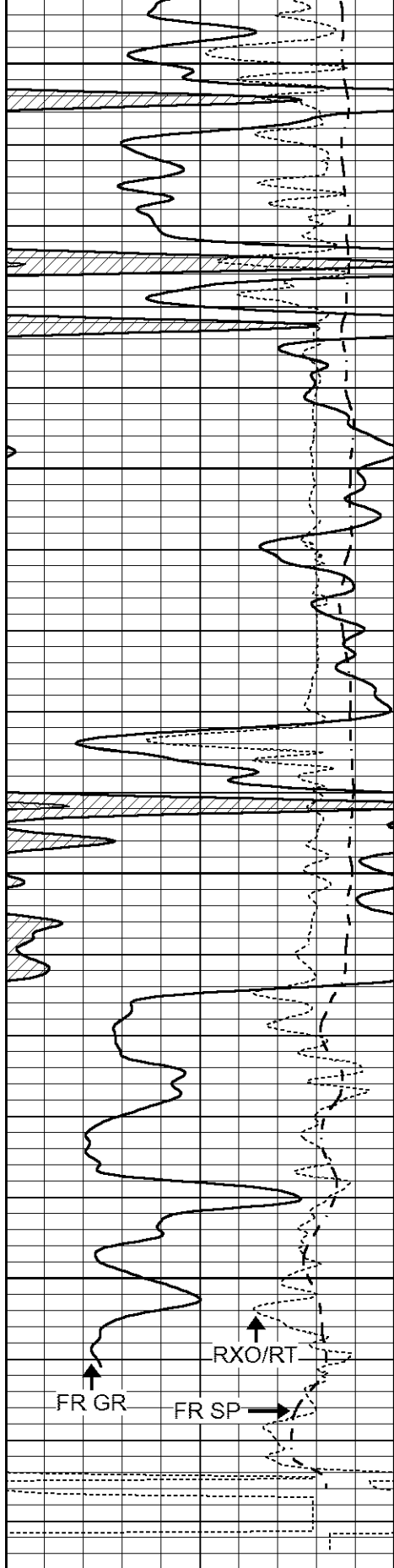
2200

2250

2300

2350





2400

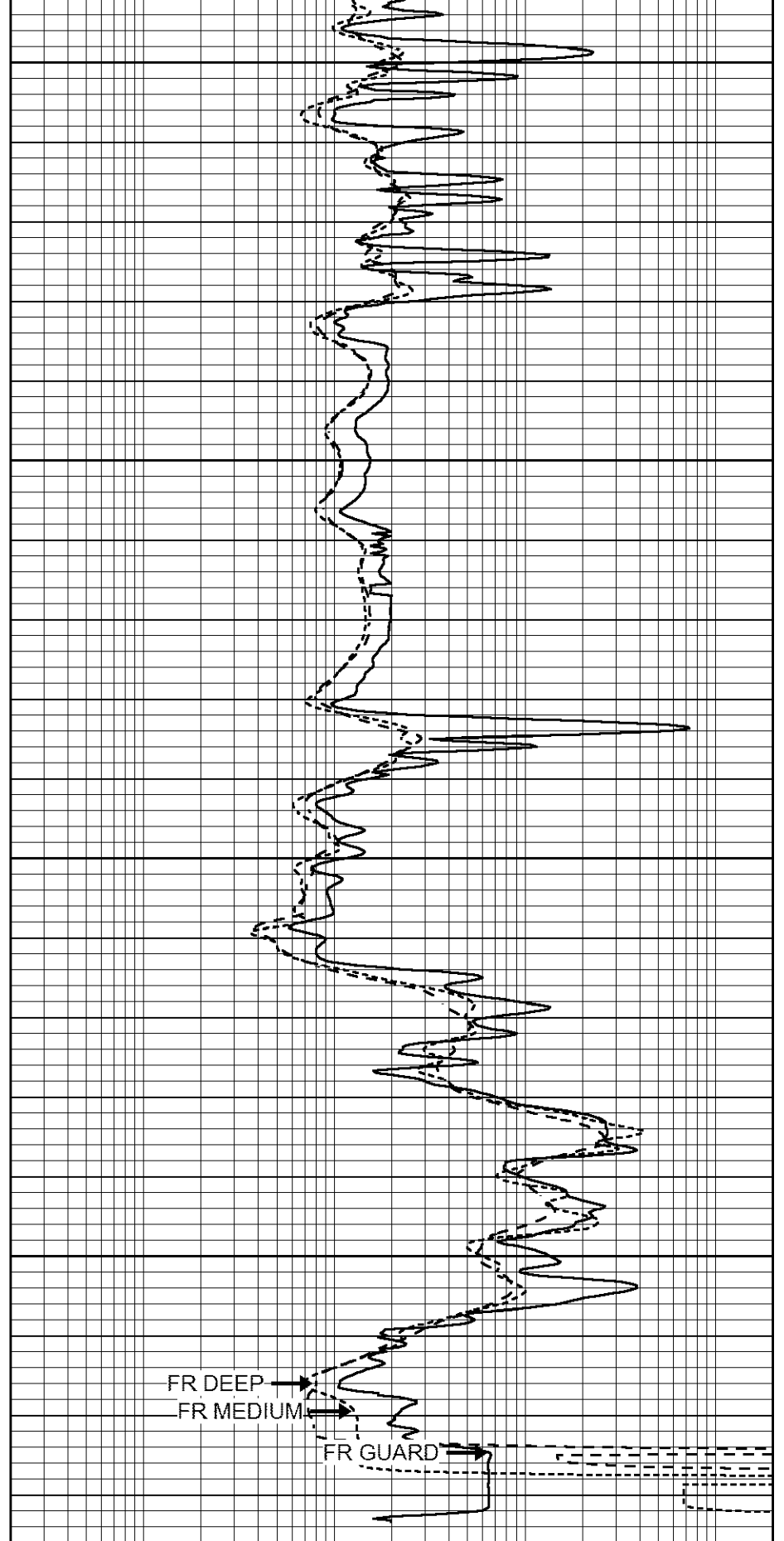
2450

2500

2550

LTD 2577

0	GAMMA RAY (GAPI)	150
-100	SP (mV)	100
-250	Rxo/Rt	50



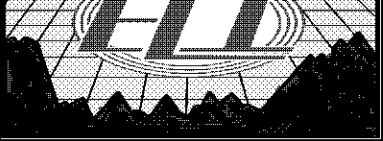
FR DEEP
FR MEDIUM

FR GUARD

0.2	SHALLOW GUARD (Ohm-m)	2000
0.2	MEDIUM INDUCTION (Ohm-m)	2000
0.2	DEEP INDUCTION (Ohm-m)	2000



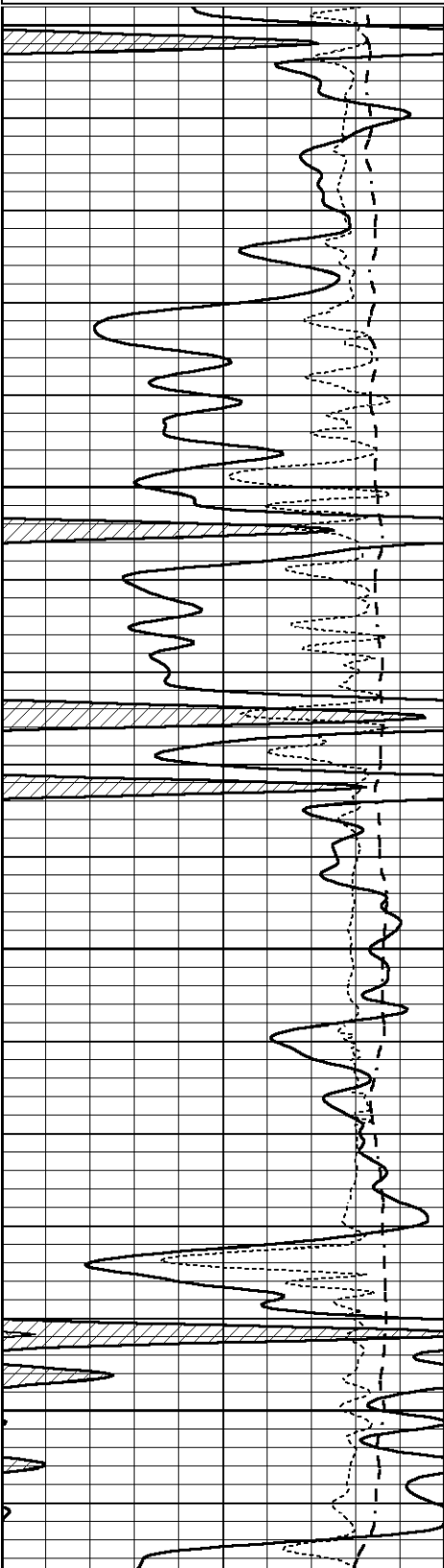
REPEAT SECTION



Database File 7795pe.db
Dataset Pathname pass3R
Presentation Format _dil
Dataset Creation Mon Nov 20 13:53:43 2023
Charted by Depth in Feet scaled 1:240

0	GAMMA RAY (GAPI)	150
-100	SP (mV)	100
-250	Rxo/Rt	50

0.2	SHALLOW GUARD (Ohm-m)	2000
0.2	MEDIUM INDUCTION (Ohm-m)	2000
0.2	DEEP INDUCTION (Ohm-m)	2000

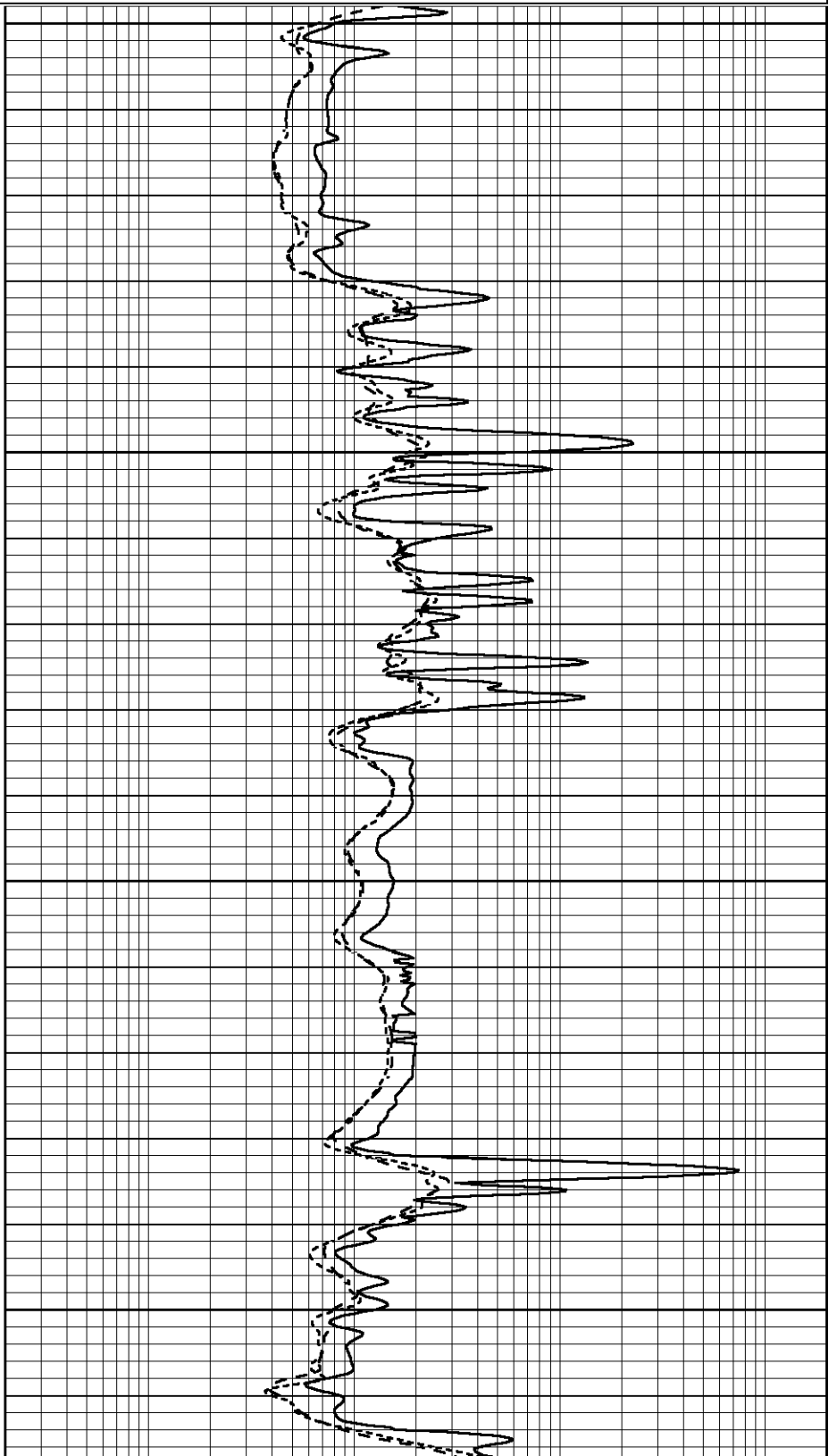


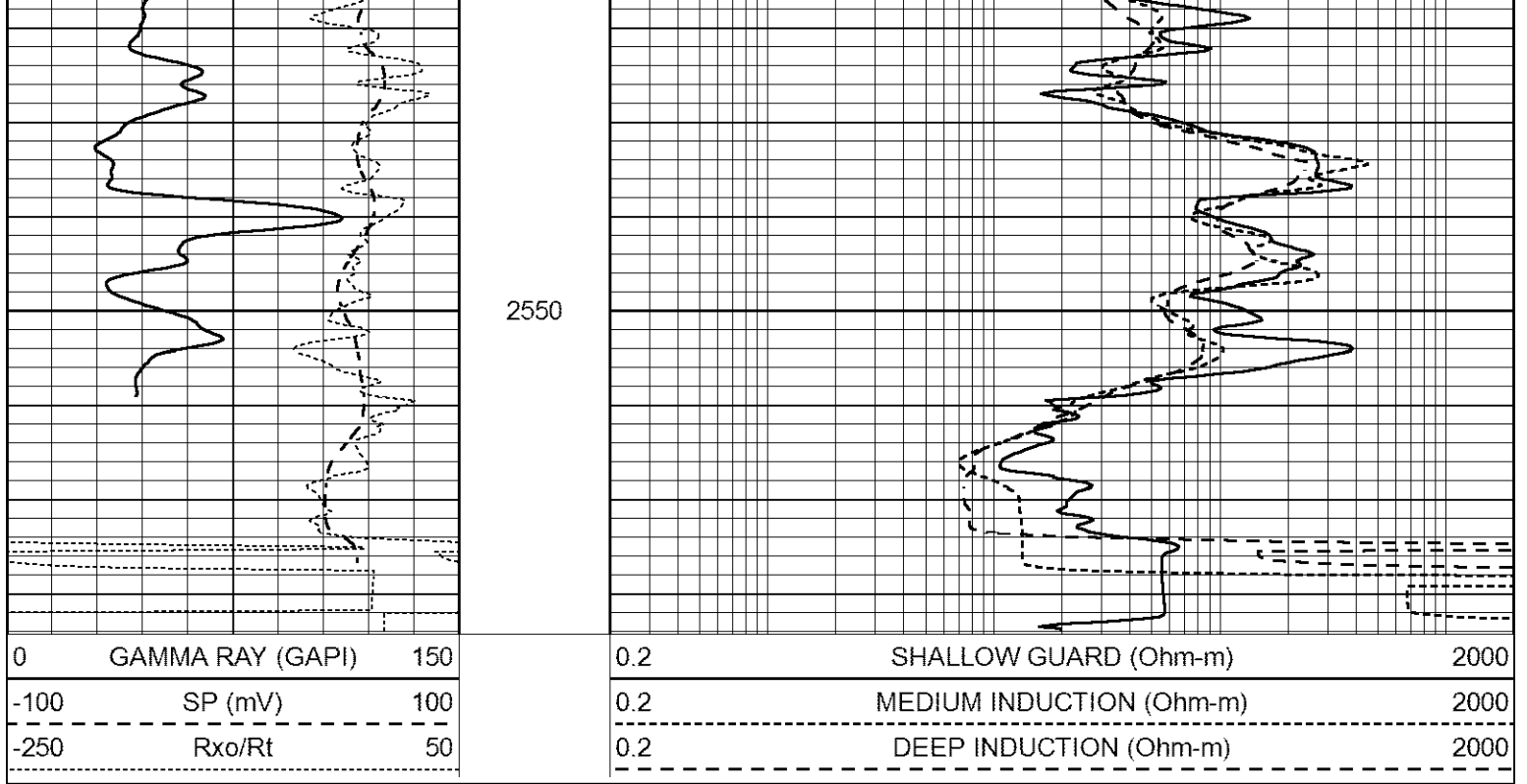
2350

2400

2450

2500





Calibration Report

Database File 7795pe.db
 Dataset Pathname pass3R
 Dataset Creation Mon Nov 20 13:53:43 2023

Dual Induction Calibration Report

Serial-Model: FW1410-55-Probe
 Surface Cal Performed: Sat Jul 29 01:57:42 2023
 Downhole Cal Performed: Tue Feb 19 11:44:24 2019
 After Survey Verification Performed: Tue Feb 19 11:44:27 2019

Surface Calibration

Loop:	Readings			V	References			Results	
	Air	Loop			Air	Loop	mmho/m	m	b
Deep	0.011	0.656		1.000	400.000	565.000	-7.000		
Medium	-0.000	0.731		1.000	464.000	530.000	-10.000		
Internal:	Zero			V	Cal			Results	
Deep	0.007	0.649			0.000	400.000	623.784	-4.595	
Medium	0.004	0.743		0.000	464.000	627.284	-2.251		

Downhole Calibration

	Readings			mmho/m	References			Results	
	Zero	Cal			Zero	Cal	mmho/m	m'	b'
Deep	-0.824	395.917		-0.976	397.550	1.004	-0.149		
Medium	3.565	471.327		3.468	471.590	1.001	-0.099		
LL3		7.503	V		1500.000				
		0.001	V		20.000				
		-7.481	V		3745.000				

After Survey Verification

	Readings			Zero	Targets		Results	
	Zero	Cal			Cal	m'	b'	

Deep	0.000	0.000	mmho/m	-0.824	395.917	mmho/m	1.000	0.000
Medium	0.000	0.000	mmho/m	3.565	471.327	mmho/m	1.000	0.000
LL3		0.000	Ohm-m		1500.000	Ohm-m		
		0.000	Ohm-m		20.000	Ohm-m		
		0.000	mmho-m		3745.000	mmho-m		

Gamma Ray Calibration Report

Serial Number:	7	
Tool Model:	Probe1	
Performed:	Tue Aug 01 20:36:29 2023	
Calibrator Value:	1.0	GAPI
Background Reading:	0.0	cps
Calibrator Reading:	1.0	cps
Sensitivity:	0.2500	GAPI/cps