



**COMPENSATED  
DENSITY/NEUTRON  
PE LOG**

Company VESS OIL CORPORATION  
Well RAMSEY #10  
Field EL DORADO  
County BUTLER  
State KANSAS

Company VESS OIL CORPORATION  
Well RAMSEY #10  
Field EL DORADO  
County BUTLER State KANSAS

Location: API #: 15-015-24215-0000  
1420 FSL & 990 FEL  
S2 - SW - NE - SE  
SEC 6 TWP 25S RGE 05E  
Permanent Datum GROUND LEVEL Elevation 1420  
Log Measured From KELLY BUSHING 8' A.G.L  
Drilling Measured From KELLY BUSHING  
Other Services  
DILMEL  
SONIC  
Elevation  
K.B. 1428  
D.F. 1426  
G.L. 1420

Date	11/20/23		
Run Number	TWO		
Depth Driller	2580		
Depth Logger	2577		
Bottom Logged Interval	2553		
Top Log Interval	263		
Casing Driller	8.625 @ 263		
Casing Logger	263		
Bit Size	7.875		
Type Fluid in Hole	CHEMICAL MUD	CHLORIDES 1.450 PPM	
Density / Viscosity	9.3/44		
pH / Fluid Loss	10.0/7.2		
Source of Sample	FLOWLINE		
Rm @ Meas. Temp	1.70 @ 65F		
Rmt @ Meas. Temp	1.28 @ 65F		
Rmc @ Meas. Temp	2.04 @ 65F		
Source of Rmf / Rmc	MEASUREMENT		
Rm @ BHT	1.07 @ 103F		
Time Circulation Stopped	2 HOURS		
Time Logger on Bottom	1:00 P.M.		
Maximum Recorded Temperature	103F		
Equipment Number	3802		
Location	HAYS, KANSAS		
Recorded By	COLE ROBBEN		
Witnessed By	ROGER MARTIN		

<<< Fold Here >>>

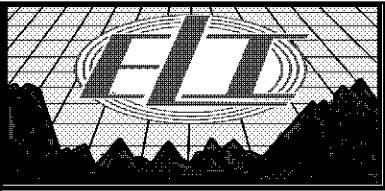
All interpretations are opinions based on inferences from electrical or other measurements and we cannot and do not guarantee the accuracy or correctness of any interpretation, and we shall not, except in the case of gross or willful negligence on our part, be liable or responsible for any loss, costs, damages, or expenses incurred or sustained by anyone resulting from any interpretation made by any of our officers, agents or employees. These interpretations are also subject to our general terms and conditions set out in our current Price Schedule.

**Comments**

THANK YOU FOR USING ELI WIRELINE SERVICES, HAYS, KS. ( 785 ) 628-6395

**DIRECTIONS:**

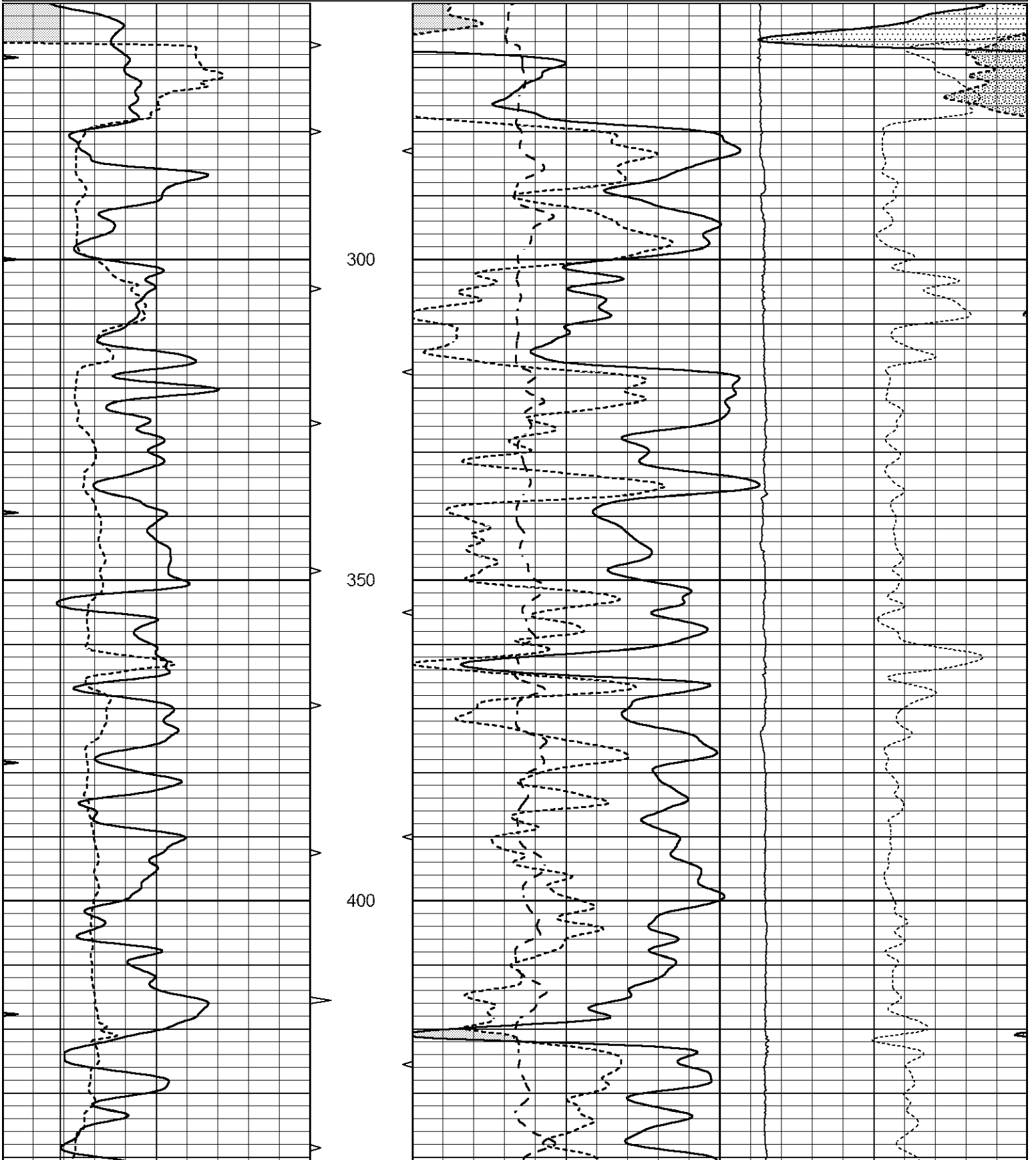
FROM WEST SIDE OF EL DORADO, KANSAS ON HIGHWAY 254/196 GO NORTH 5 1/2 MILES  
NORTH ON HIGHWAY 196 TO NW 50TH STREET, 1 1/2 MILES EAST, NORTH INTO

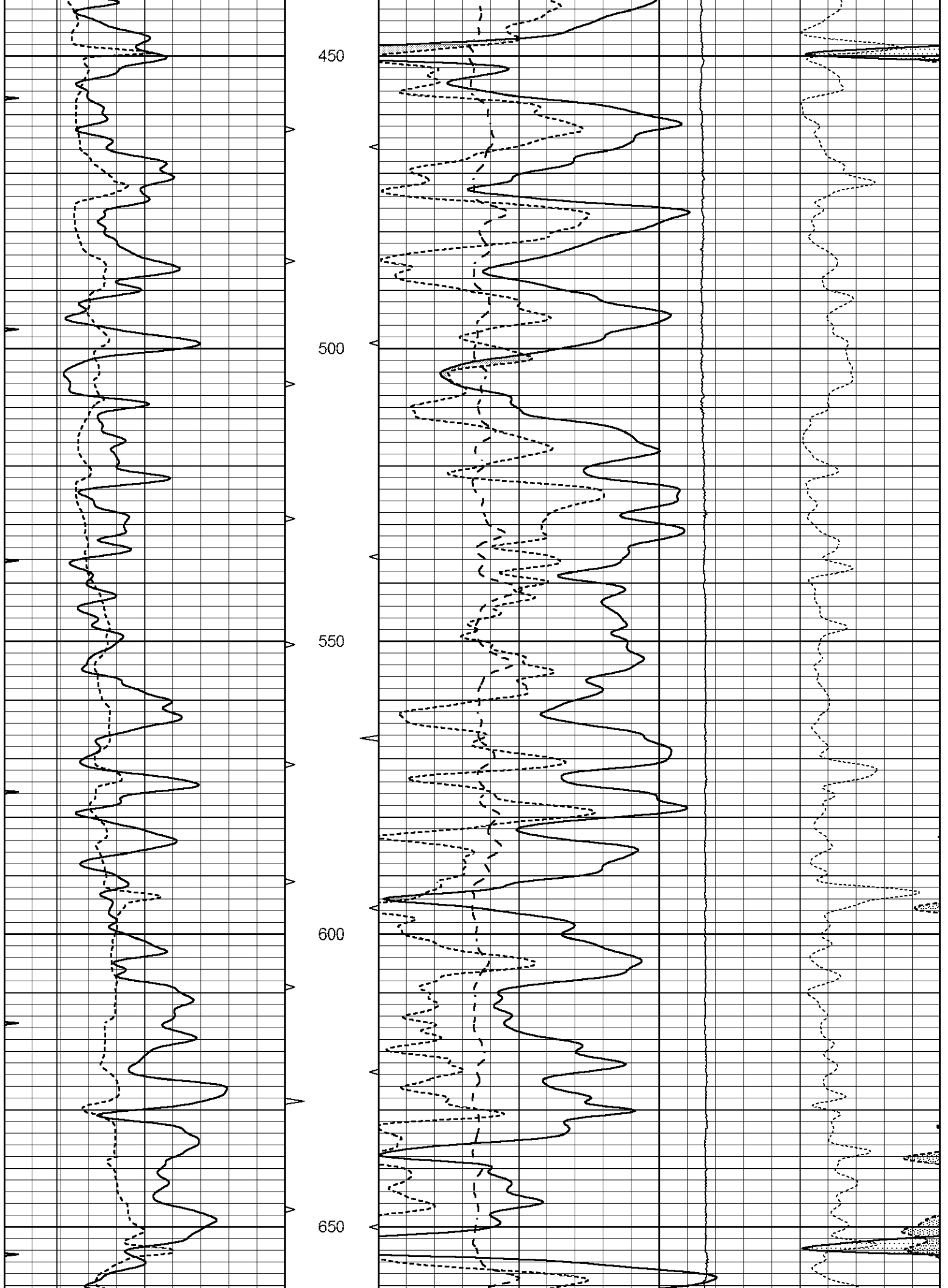


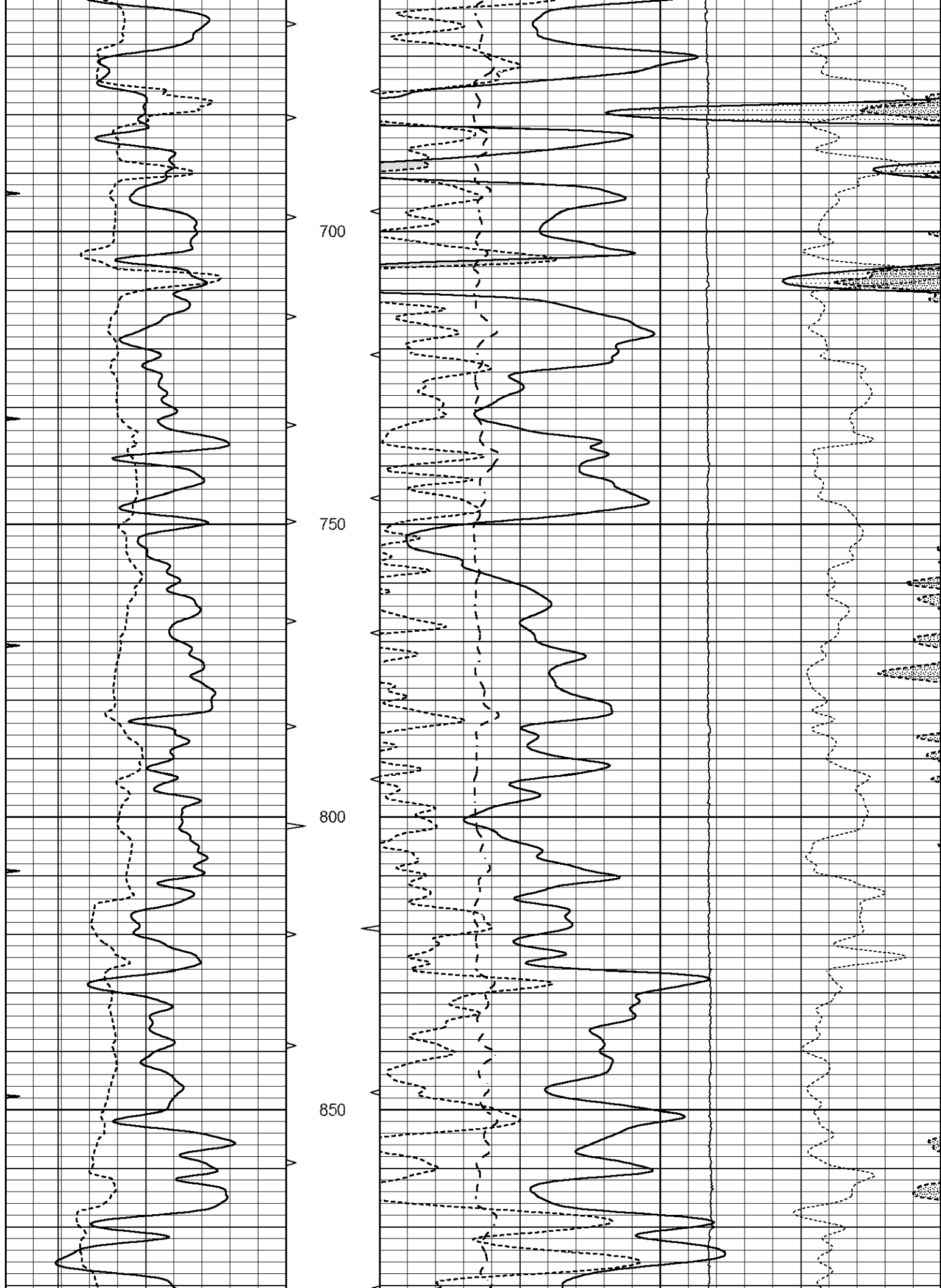
**MAIN SECTION**

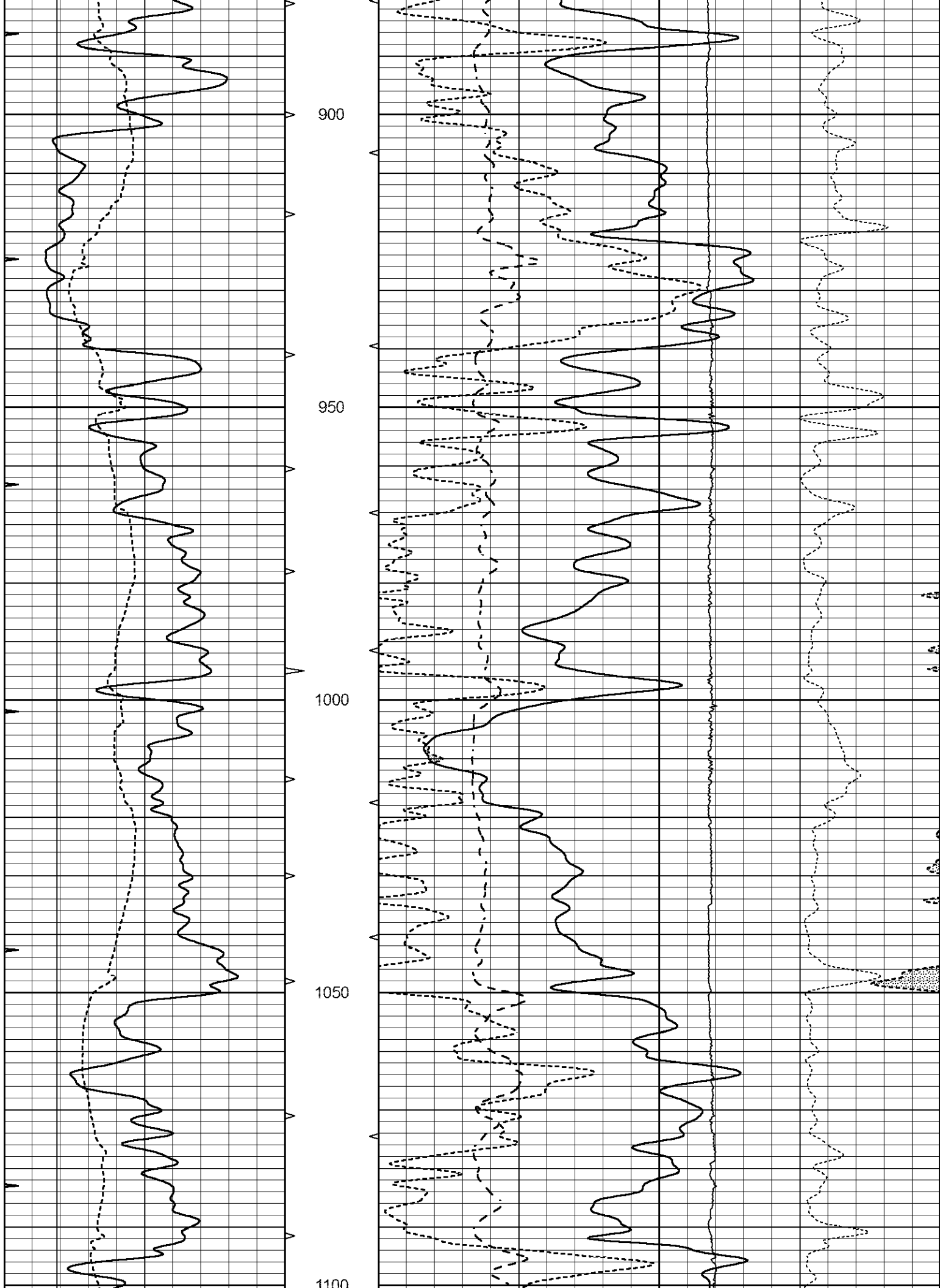
Database File 7795pe.db  
 Dataset Pathname pass4M1  
 Presentation Format \_ldt\_neu  
 Dataset Creation Mon Nov 20 16:48:13 2023  
 Charted by Depth in Feet scaled 1:240

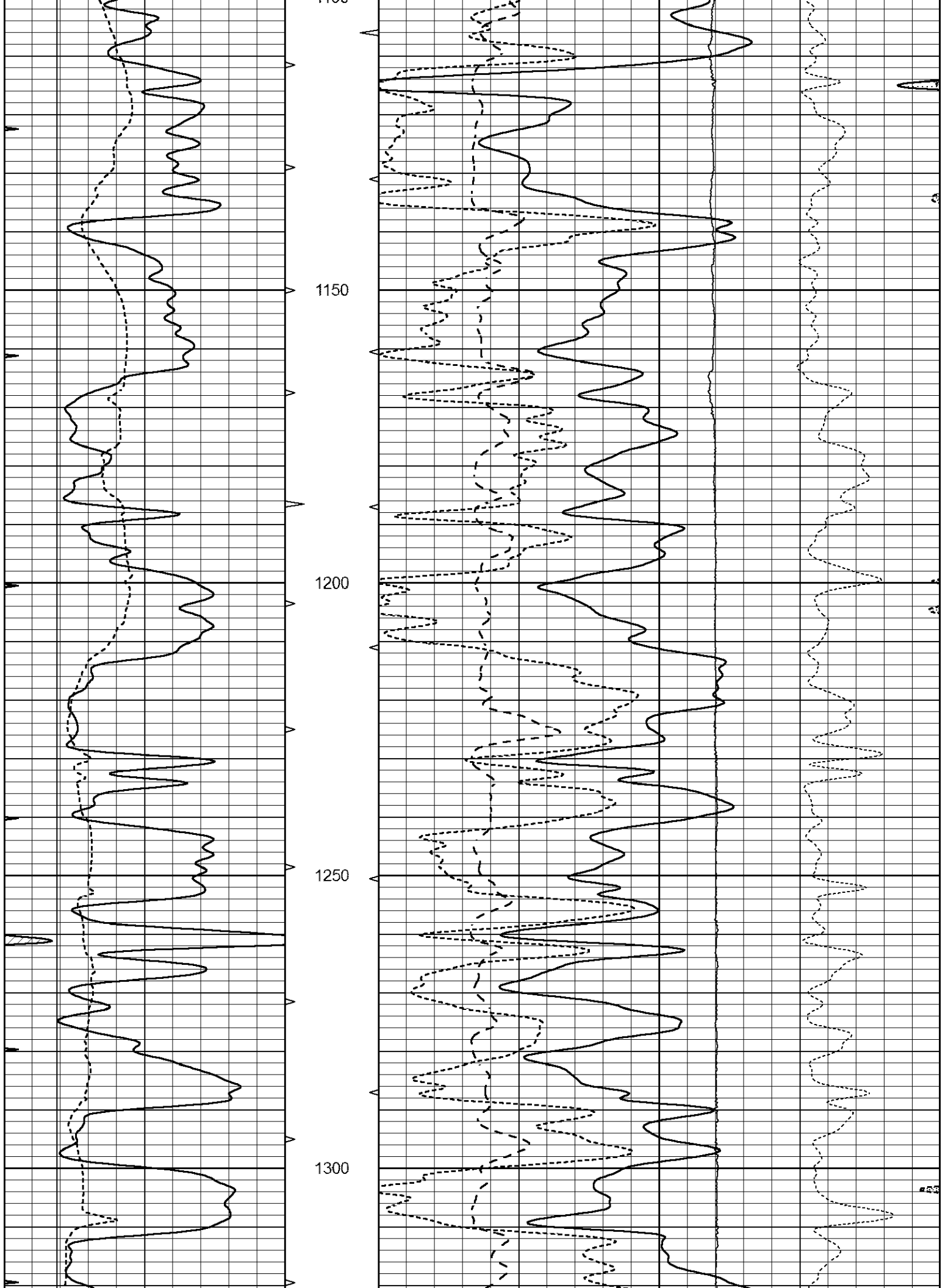
0	GAMMA RAY (GAPI)	150	ABHV	30	COMPENSATED DENSITY (pu)		-10		
6	CALIPER (in)	16	10 (ft3)	0	COMPENSATED NEUTRON (pu)		-10		
0	MINMK	20	TBHV	0	PE	10	-0.25	CORRECTION (g/cc)	0.25
			0 (ft3)	10			0	LTEN (lb)	5000

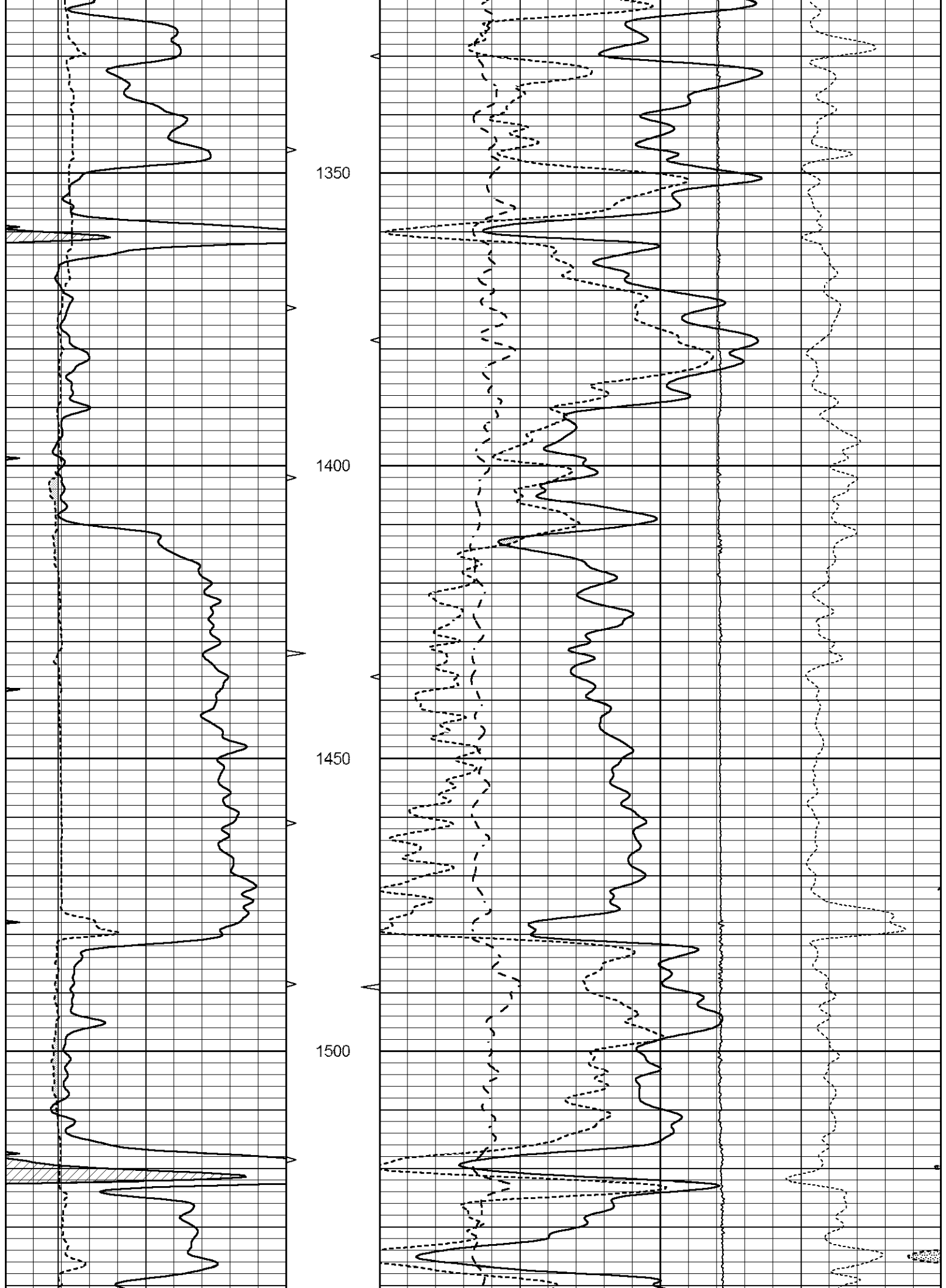


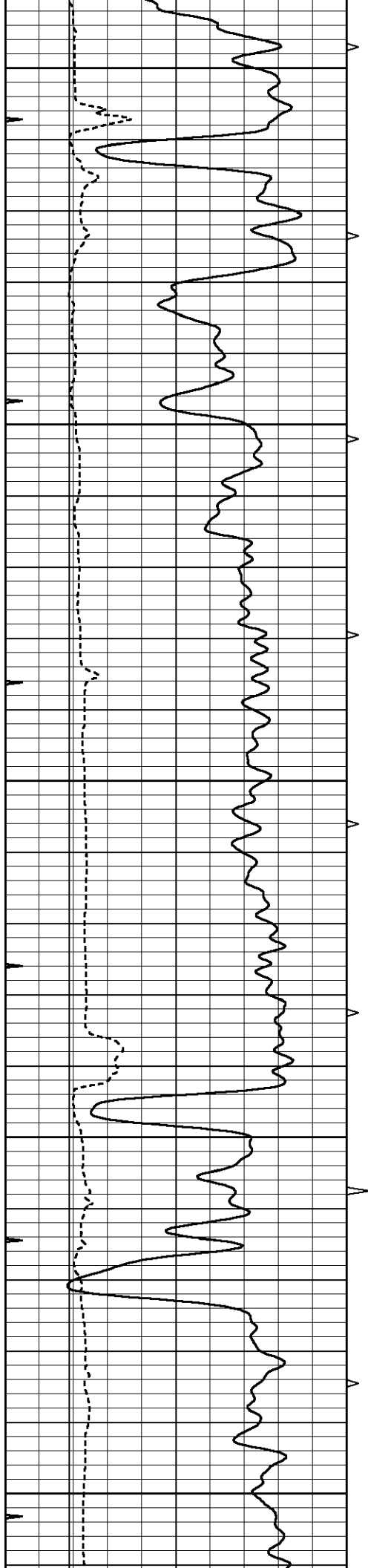












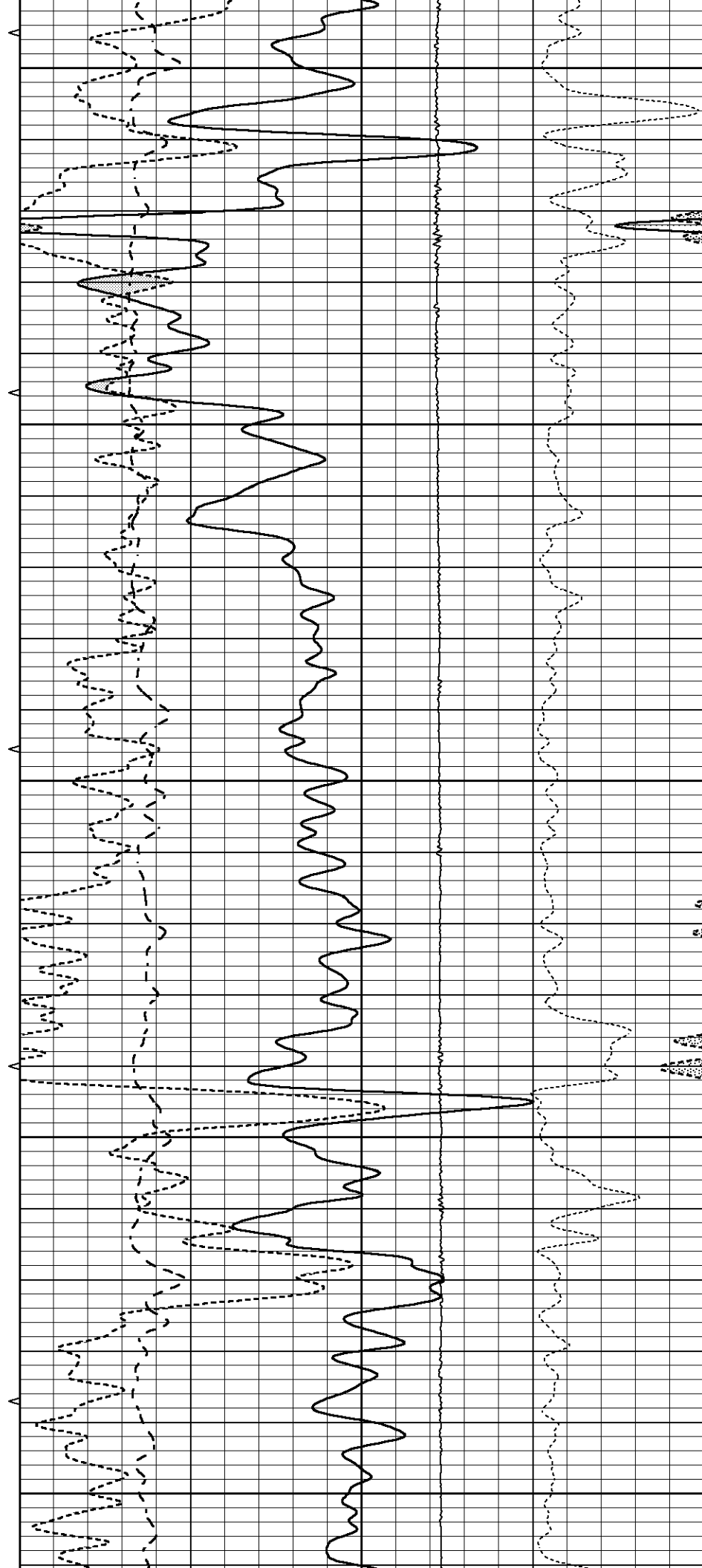
1550

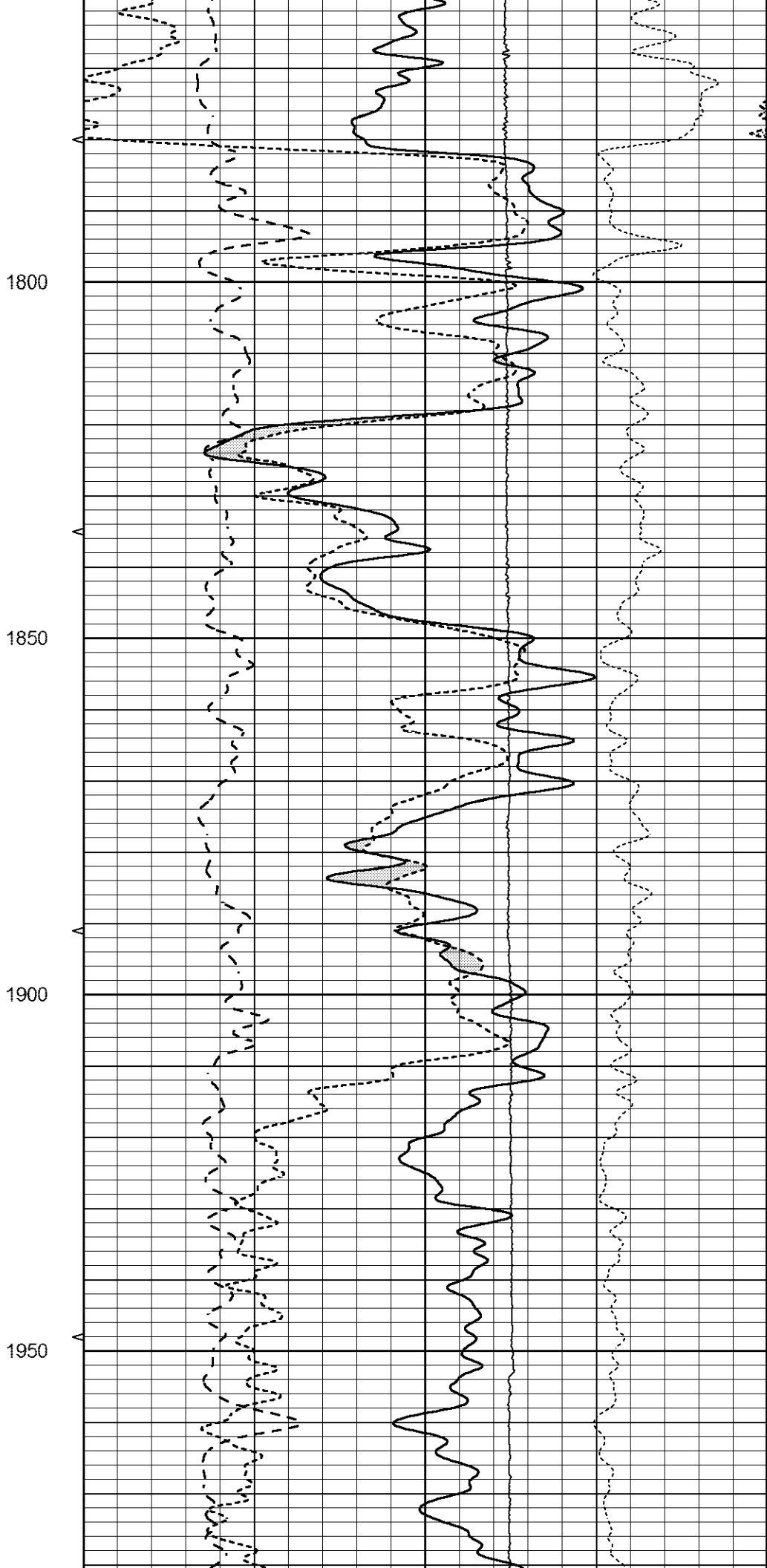
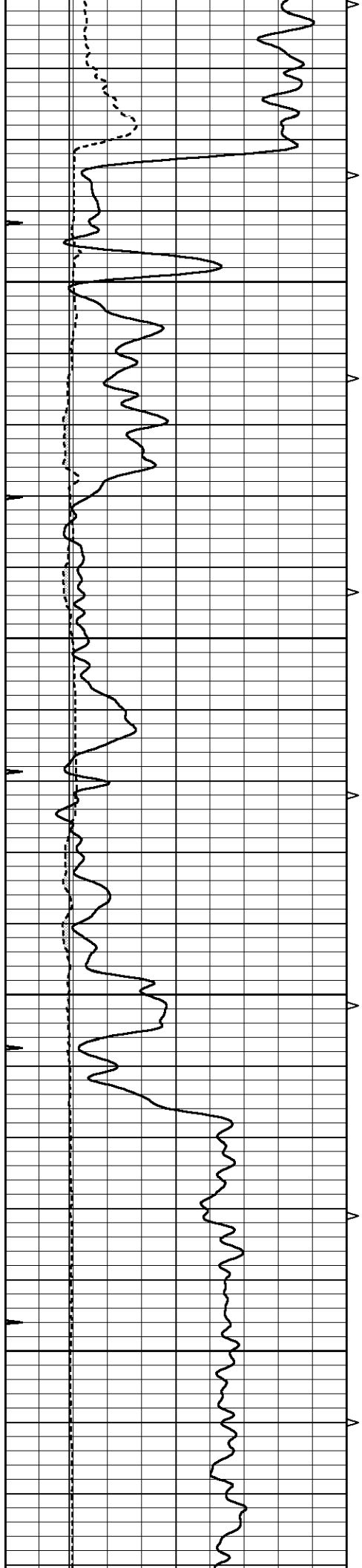
1600

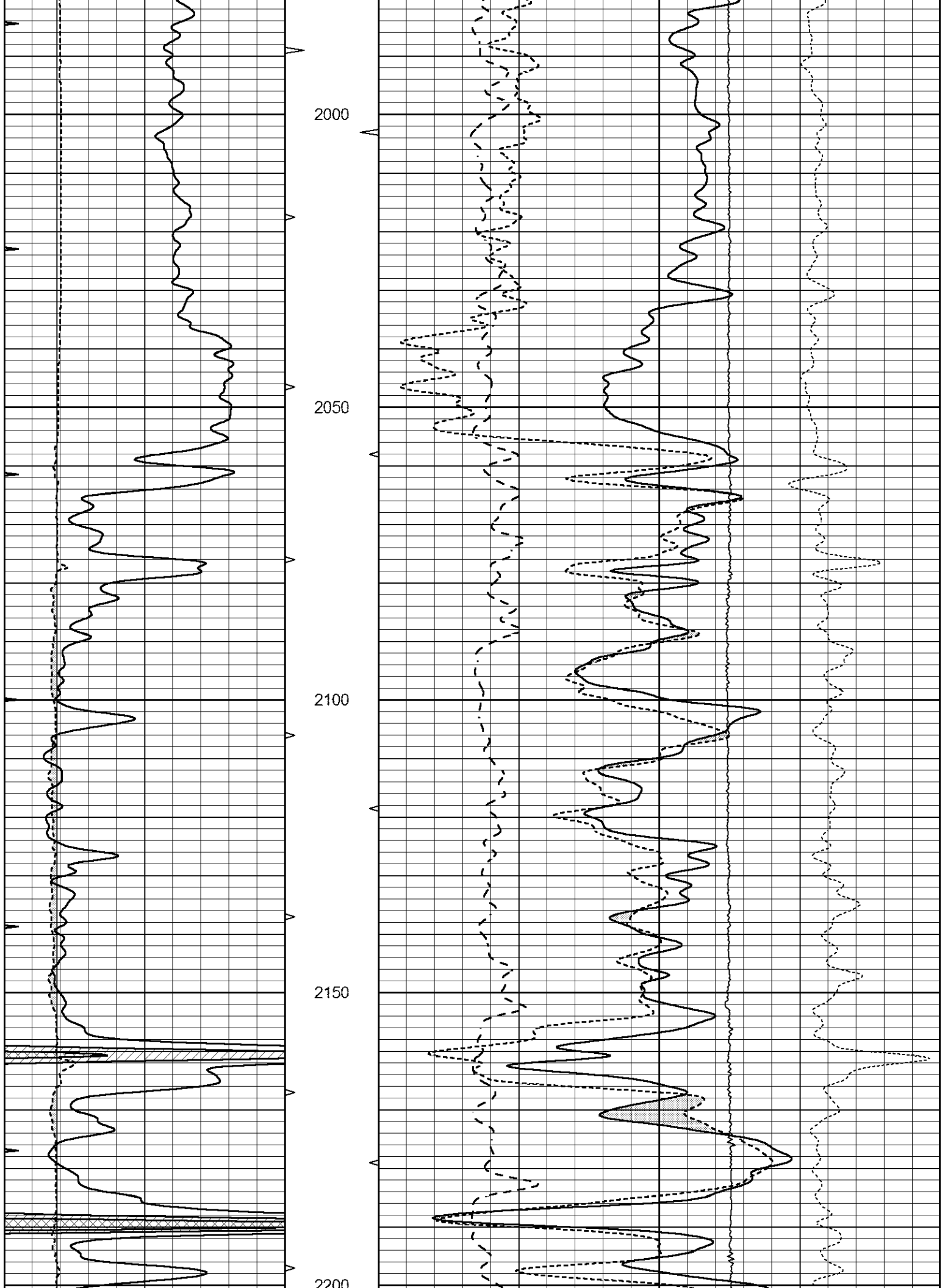
1650

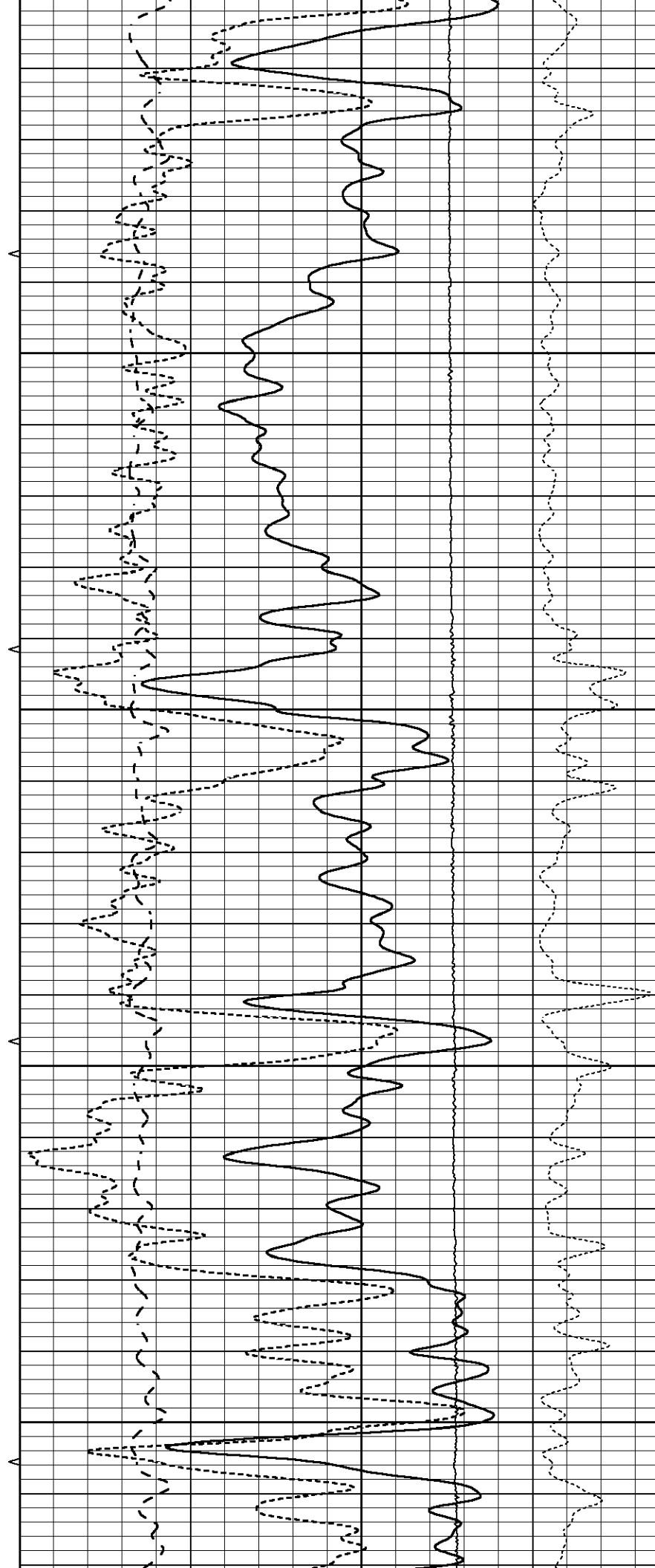
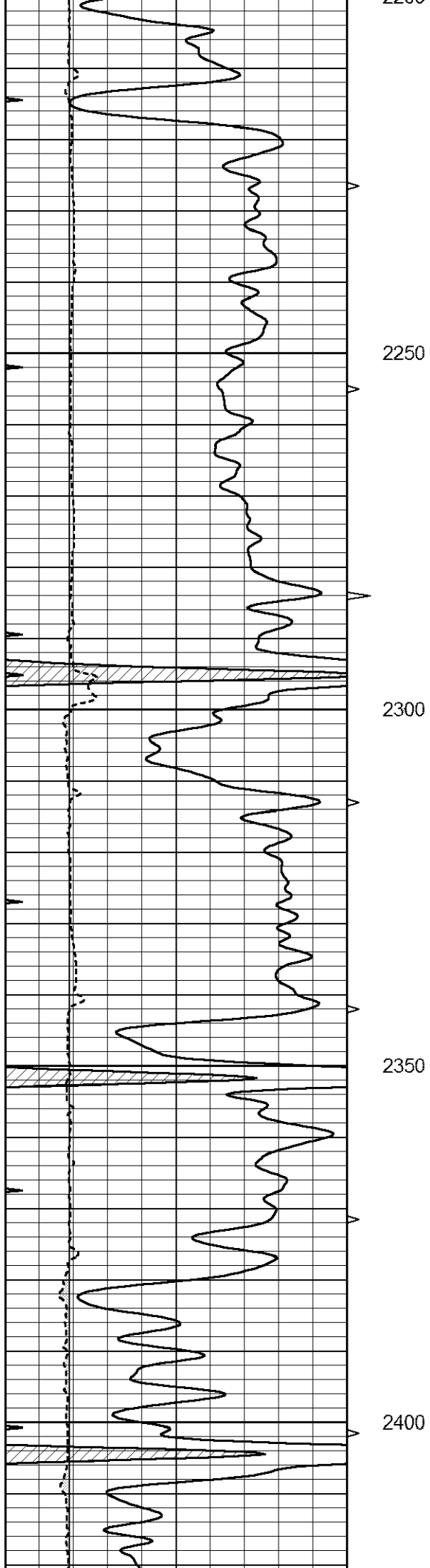
1700

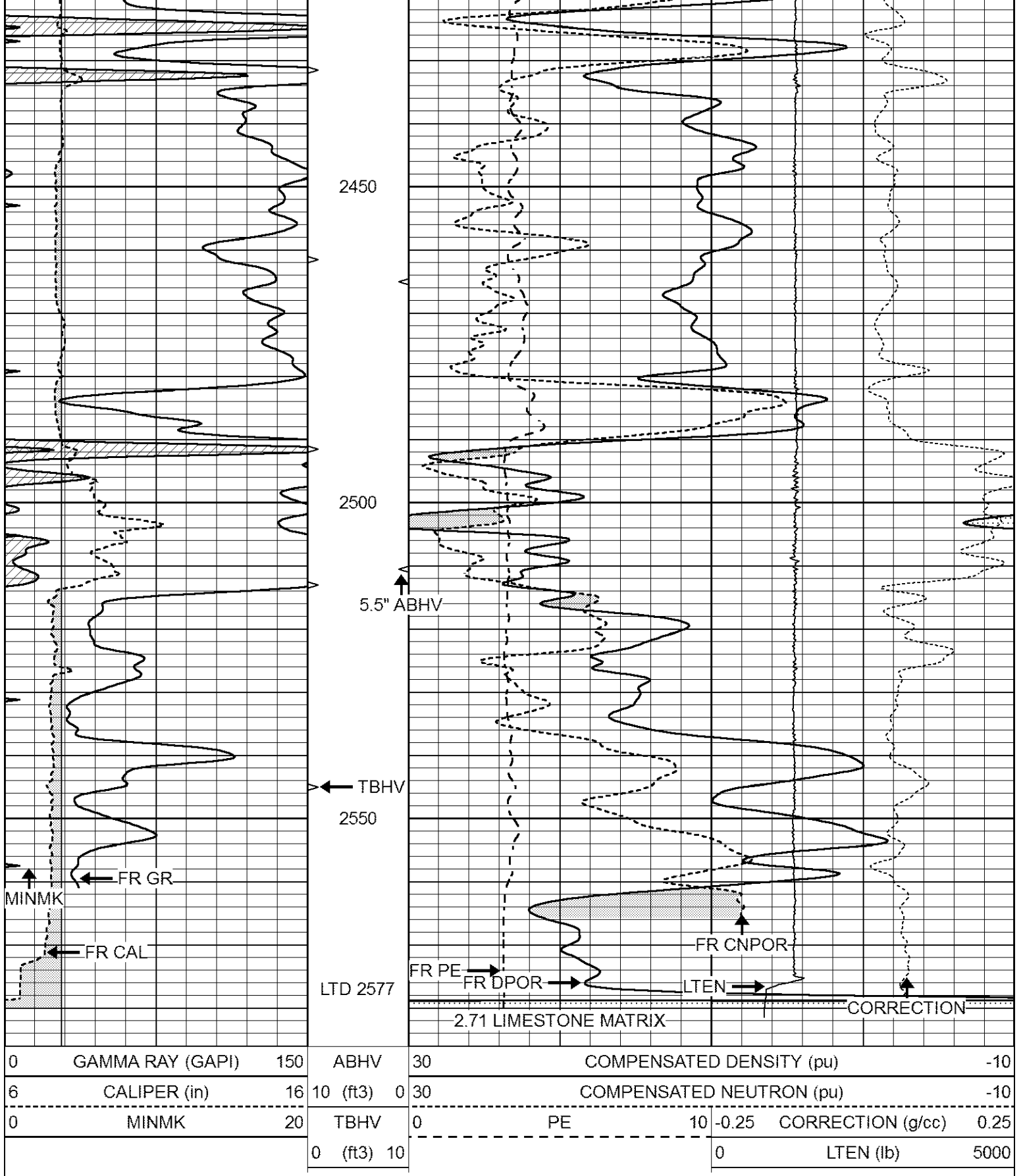
1750





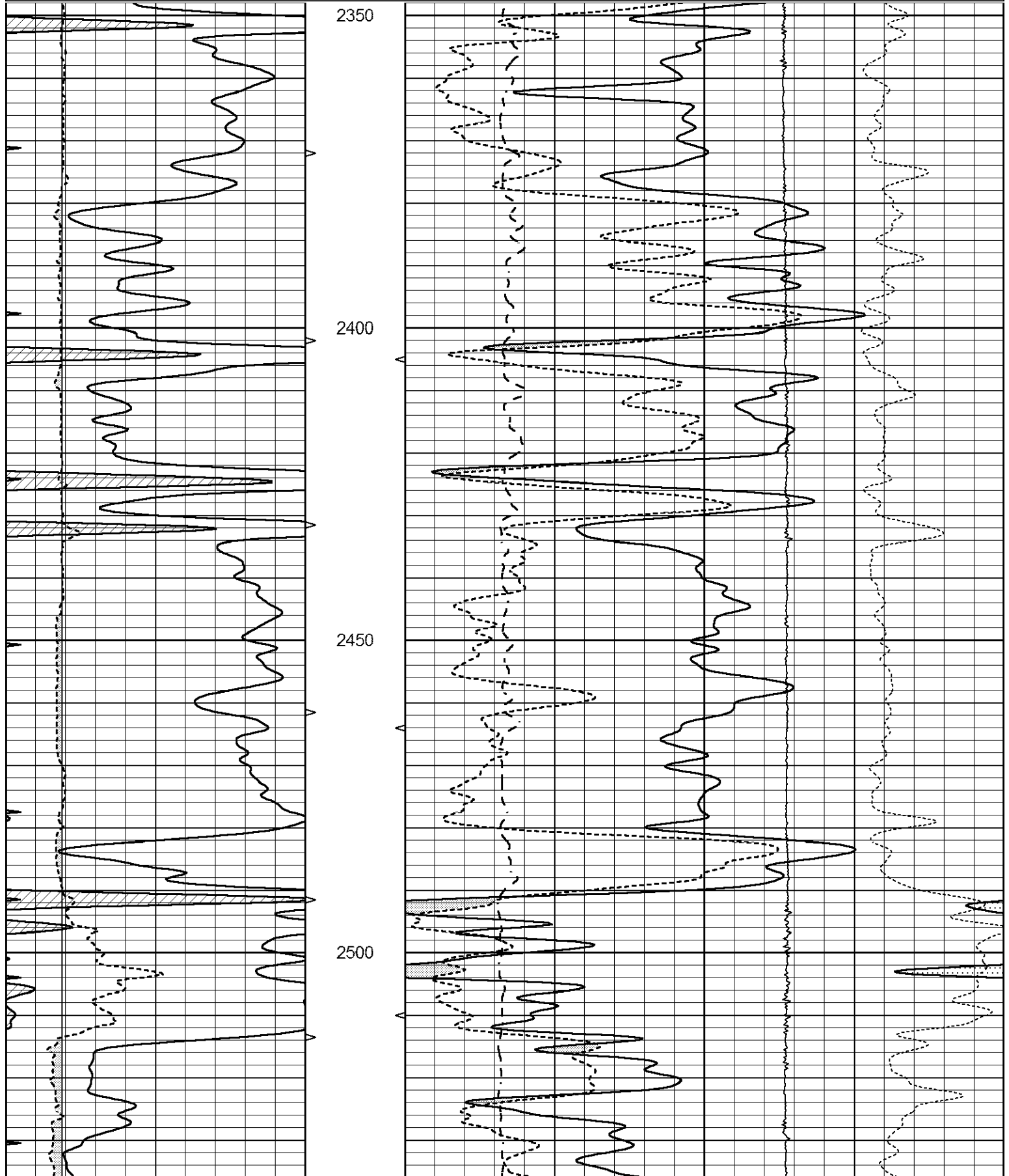


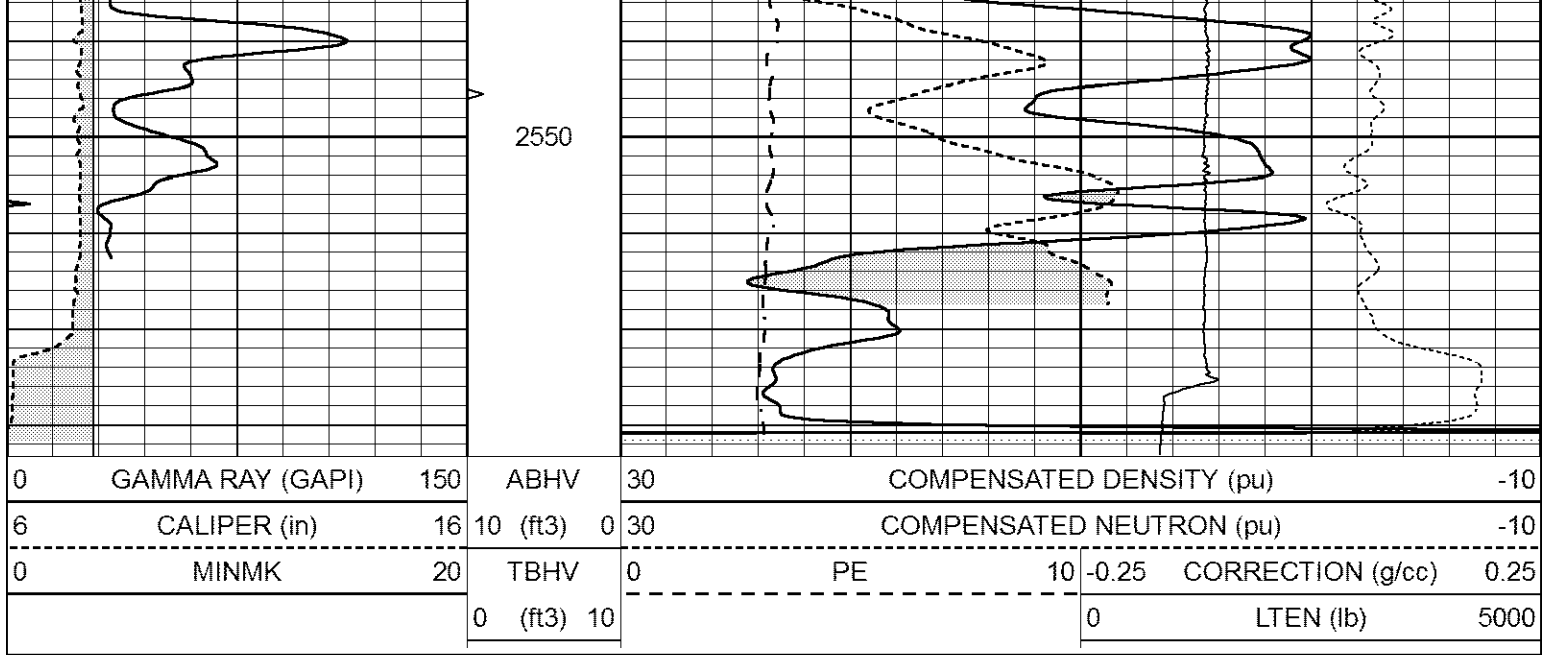




# REPEAT SECTION

0	GAMMA RAY (GAPI)	150	ABHV	30	COMPENSATED DENSITY (pu)				-10	
6	CALIPER (in)	16	10 (ft3)	0	30	COMPENSATED NEUTRON (pu)				-10
0	MINMK	20	TBHV	0	PE	10	-0.25	CORRECTION (g/cc)	0.25	
			0 (ft3)	10			0	LTEN (lb)	5000	





### Calibration Report

Database File 7795pe.db  
 Dataset Pathname pass4M  
 Dataset Creation Mon Nov 20 15:00:41 2023

### Dual Induction Calibration Report

Serial-Model: FW1410-55-Probe  
 Surface Cal Performed: Sat Jul 29 01:57:42 2023  
 Downhole Cal Performed: Tue Feb 19 11:44:24 2019  
 After Survey Verification Performed: Tue Feb 19 11:44:27 2019

#### Surface Calibration

Loop:	Readings			References			Results	
	Air	Loop		Air	Loop		m	b
Deep	0.011	0.656	V	1.000	400.000	mmho/m	565.000	-7.000
Medium	-0.000	0.731	V	1.000	464.000	mmho/m	530.000	-10.000
Internal:	Zero	Cal		Zero	Cal		m	b
Deep	0.007	0.649	V	0.000	400.000	mmho/m	623.784	-4.595
Medium	0.004	0.743	V	0.000	464.000	mmho/m	627.284	-2.251

#### Downhole Calibration

	Readings			References			Results	
	Zero	Cal		Zero	Cal		m'	b'
Deep	-0.824	395.917	mmho/m	-0.976	397.550	mmho/m	1.004	-0.149
Medium	3.565	471.327	mmho/m	3.468	471.590	mmho/m	1.001	-0.099
LL3		7.503	V		1500.000	Ohm-m		
		0.001	V		20.000	Ohm-m		
		-7.481	V		3745.000	mmho-m		

#### After Survey Verification

	Readings			Targets			Results	
	Zero	Cal		Zero	Cal		m'	b'
Deep	0.000	0.000	mmho/m	-0.824	395.917	mmho/m	1.000	0.000
Medium	0.000	0.000	mmho/m	3.565	471.327	mmho/m	1.000	0.000
LL3		0.000	Ohm-m		1500.000	Ohm-m		
		0.000	Ohm-m		20.000	Ohm-m		

0.000 mmho-m

3745.000 mmho-m

Gamma Ray Calibration Report

Serial Number:	7	
Tool Model:	Probe1	
Performed:	Tue Aug 01 20:36:29 2023	
Calibrator Value:	1.0	GAPI
Background Reading:	0.0	cps
Calibrator Reading:	1.0	cps
Sensitivity:	0.2600	GAPI/cps