



5.5" BOREHOLE VOLUME LOG

Company VESS OIL CORPORATION
Well RAMSEY #10
Field EL DORADO
County BUTLER **State** KANSAS

Location: API #: 15-015-24215-0000
 1420 FSL & 990 FEL
 S2 - SW - NE - SE
 SEC 6 TWP 25S RGE 05E
Permanent Datum GROUND LEVEL Elevation 1420
Log Measured From KELLY BUSHING 8' A.G.L
Drilling Measured From KELLY BUSHING
Other Services CDL/CNL/PE
 DIL/MEL/SON
Elevation K.B. 1428
 D.F. 1426
 G.L. 1420

Date	11/20/23		
Run Number	TWO		
Depth Driller	2580		
Depth Logger	2577		
Bottom Logged Interval	2553		
Top Log Interval	263		
Casing Driller	8.625 @ 263		
Casing Logger	263		
Bit Size	7.875		
Type Fluid in Hole	CHEMICAL MUD	CHLORIDES 1.450 PPM	
Density / Viscosity	9.3/44		
pH / Fluid Loss	10.0/7.2		
Source of Sample	FLOWLINE		
Rm @ Meas. Temp	1.70 @ 65F		
Rmt @ Meas. Temp	1.28 @ 65F		
Rmc @ Meas. Temp	2.04 @ 65F		
Source of Rmf / Rmc	MEASUREMENT		
Rm @ BHT	1.07 @ 103F		
Time Circulation Stopped	2 HOURS		
Time Logger on Bottom	1:00 P.M.		
Maximum Recorded Temperature	103F		
Equipment Number	3802		
Location	HAYS, KANSAS		
Recorded By	COLE ROBBEN		
Witnessed By	ROGER MARTIN		

<<< Fold Here >>>

All interpretations are opinions based on inferences from electrical or other measurements and we cannot and do not guarantee the accuracy or correctness of any interpretation, and we shall not, except in the case of gross or willful negligence on our part, be liable or responsible for any loss, costs, damages, or expenses incurred or sustained by anyone resulting from any interpretation made by any of our officers, agents or employees. These interpretations are also subject to our general terms and conditions set out in our current Price Schedule.

Comments

THANK YOU FOR USING ELI WIRELINE SERVICES, HAYS, KS. (785) 628-6395

DIRECTIONS:

FROM WEST SIDE OF EL DORADO, KANSAS ON HIGHWAY 254/196 GO NORTH 5 1/2 MILES
NORTH ON HIGHWAY 196 TO NW 50TH STREET, 1 1/2 MILES EAST, NORTH INTO



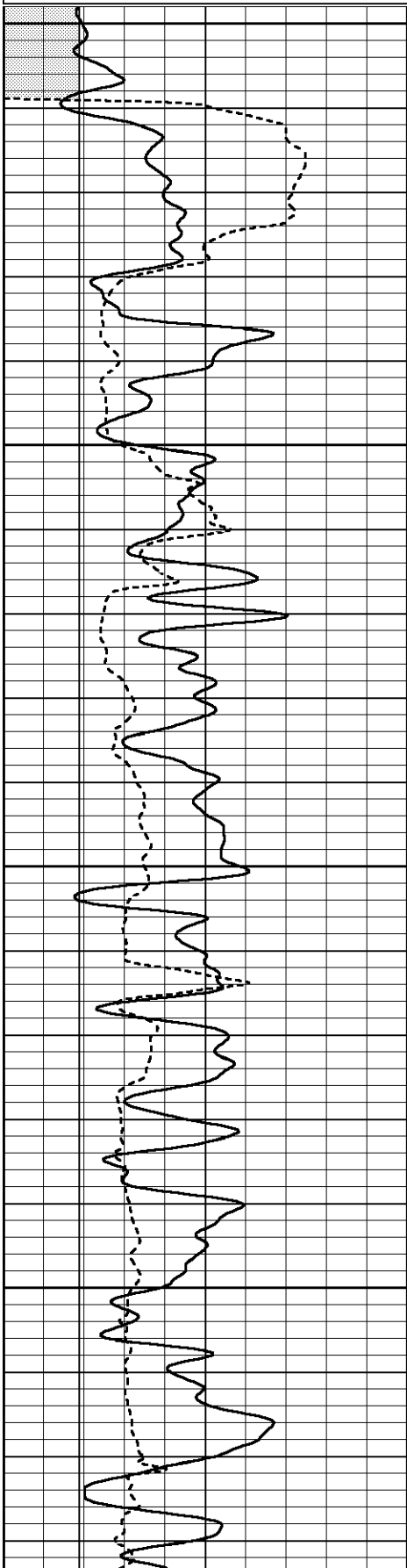
MAIN SECTION

Database File 7795pe.db
 Dataset Pathname pass4L
 Presentation Format obrbore
 Dataset Creation Mon Nov 20 17:45:45 2023
 Charted by Depth in Feet scaled 1:240

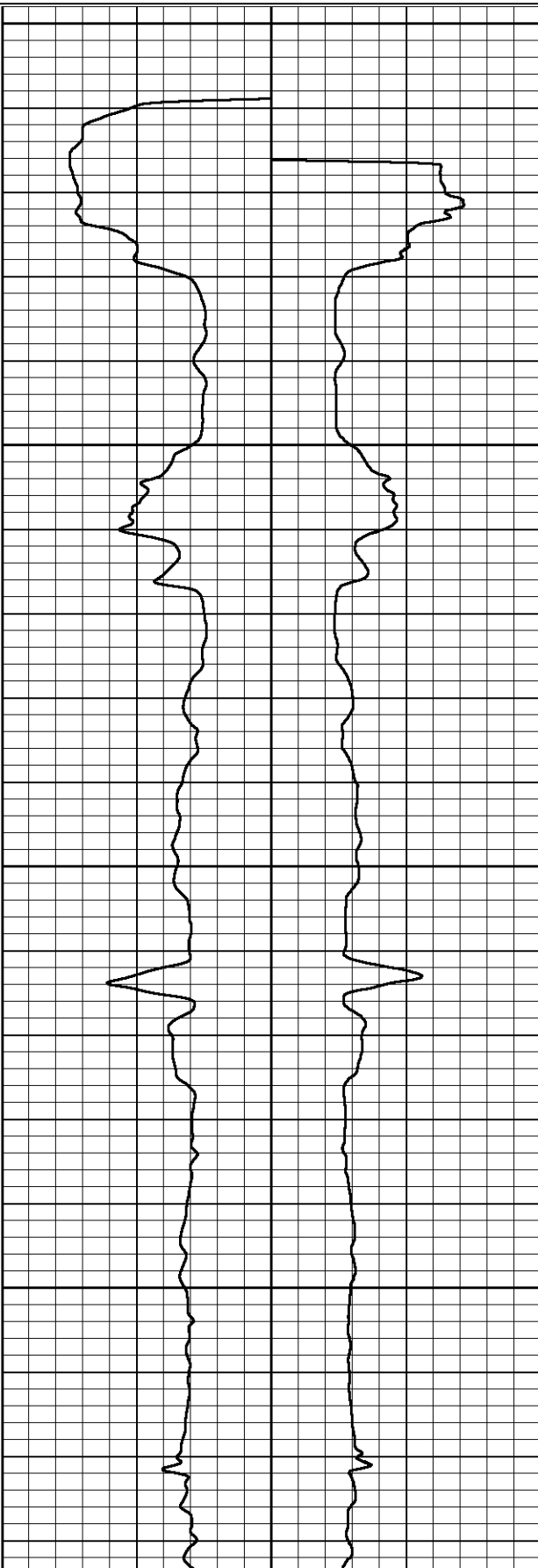
0	GR (GAPI)	150
6	CALIPER (in)	16

16	MELCAL (in)	6	6	DCAL (in)	16
16	CALIPER (in)	6			

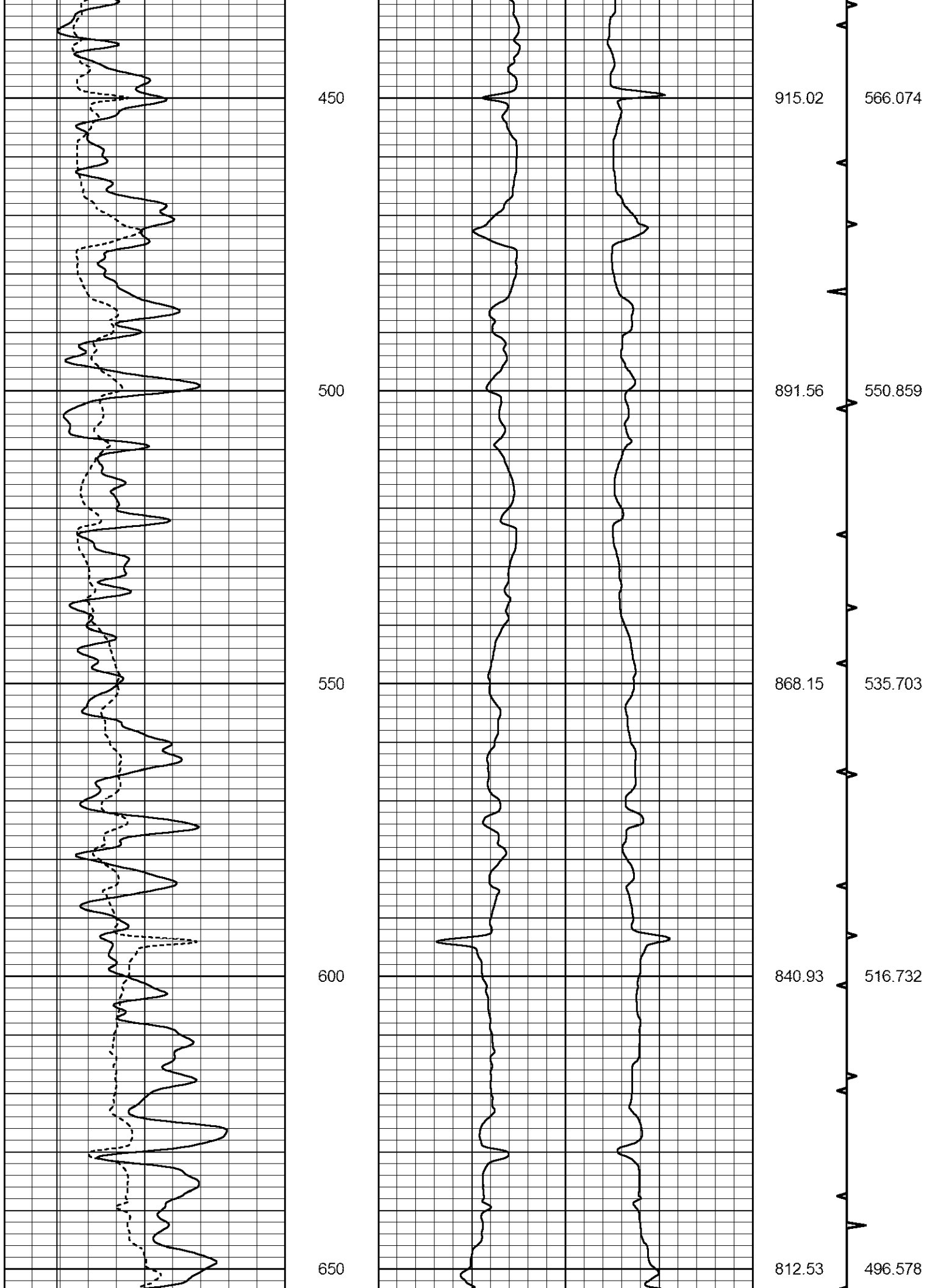
BVTX	AVTX
10 (ft3) 0 0	(ft3) 10
TBHV (ft3)	ABHV (ft3)

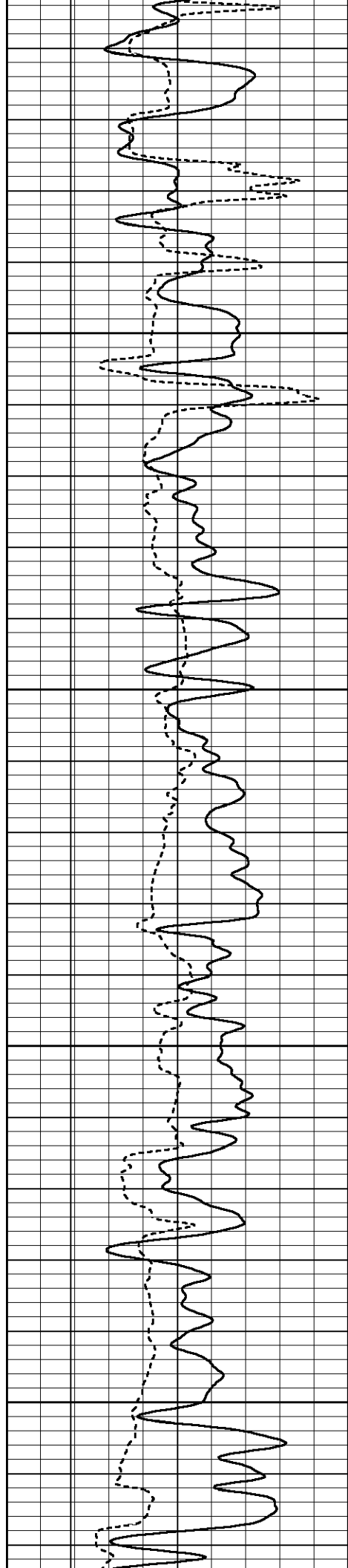


250
300
350
400



1011.52 630.269
985.26 611.559
960.89 595.441
937.11 579.914



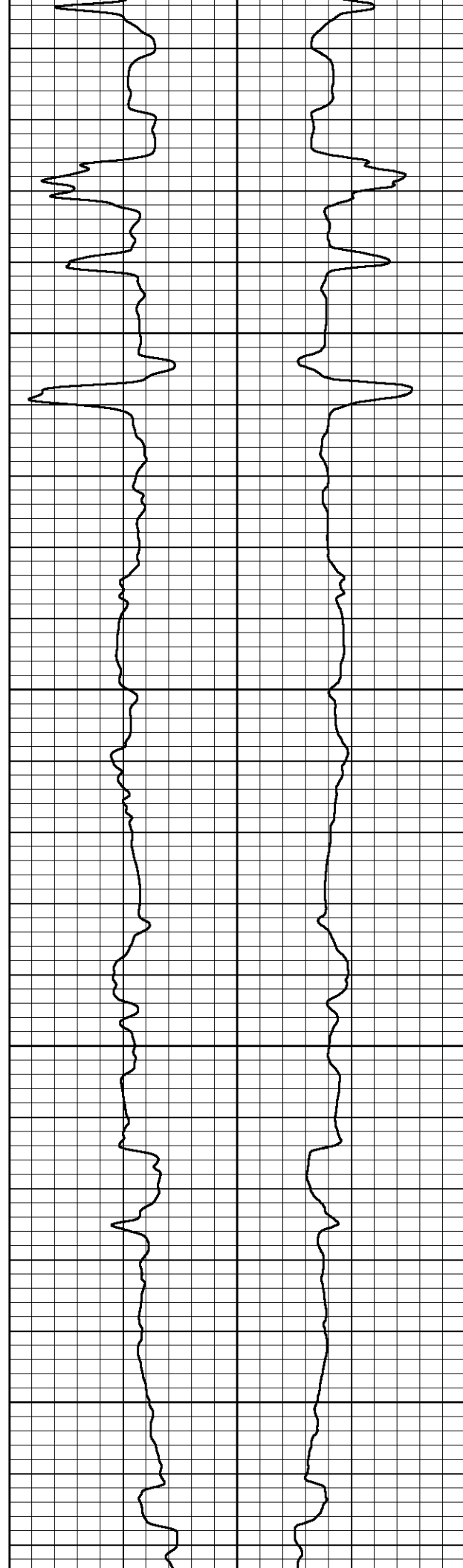


700

750

800

850



779.41

747.53

716.06

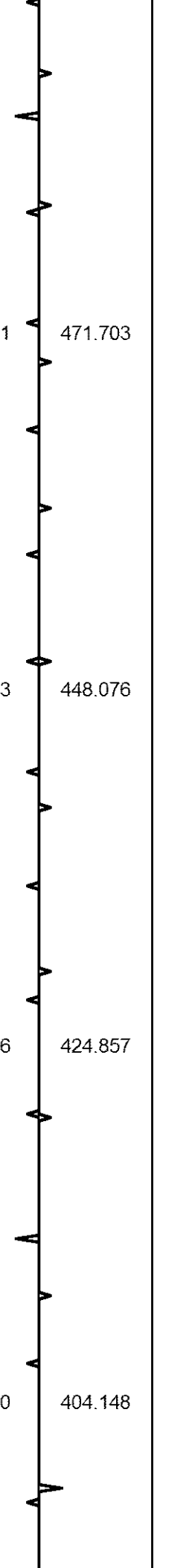
687.10

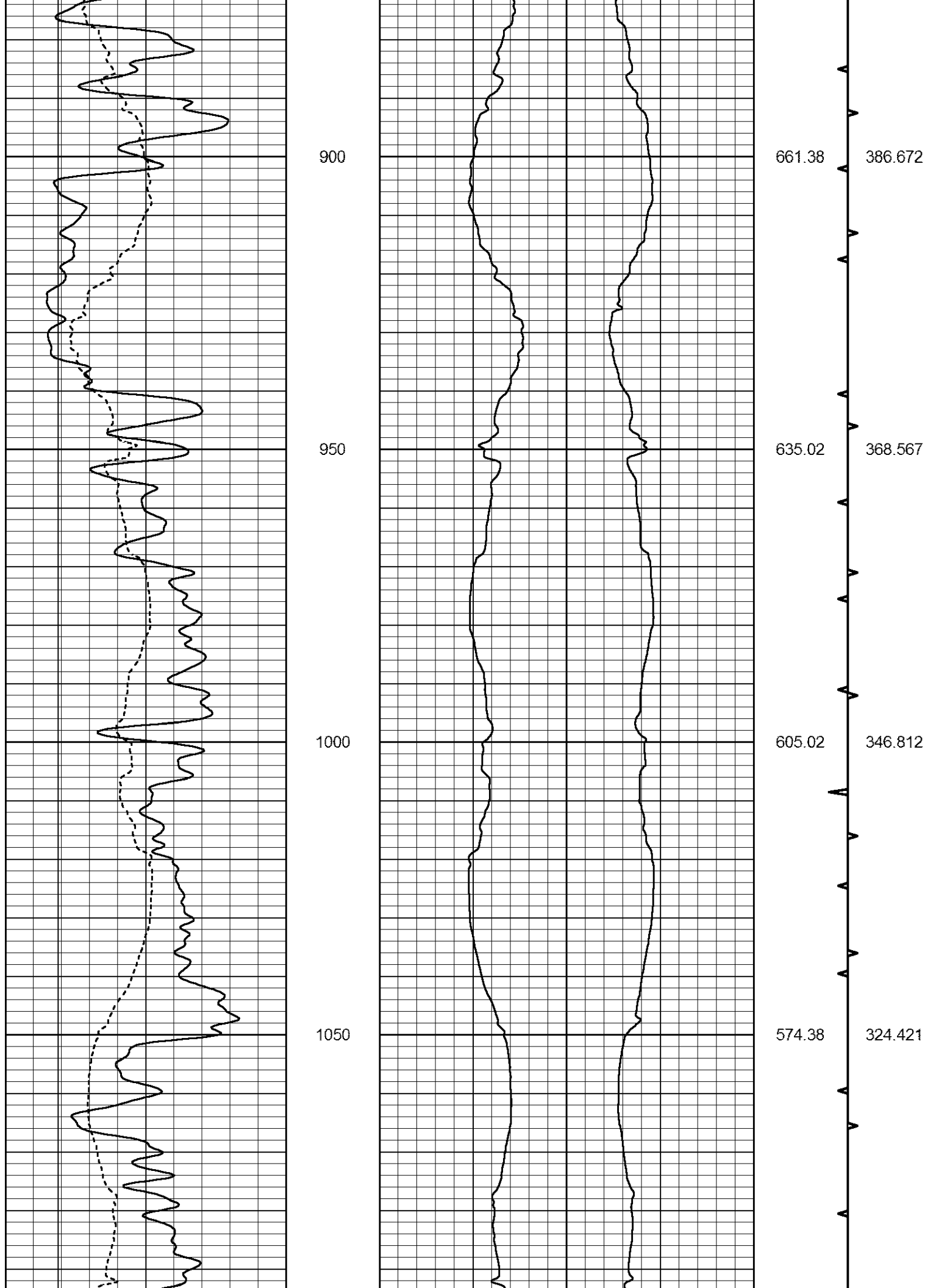
471.703

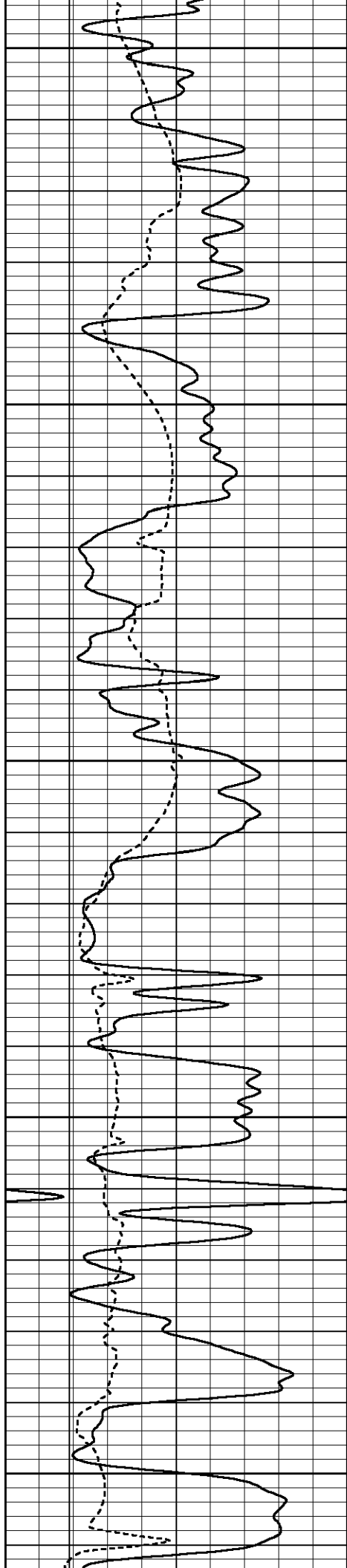
448.076

424.857

404.148







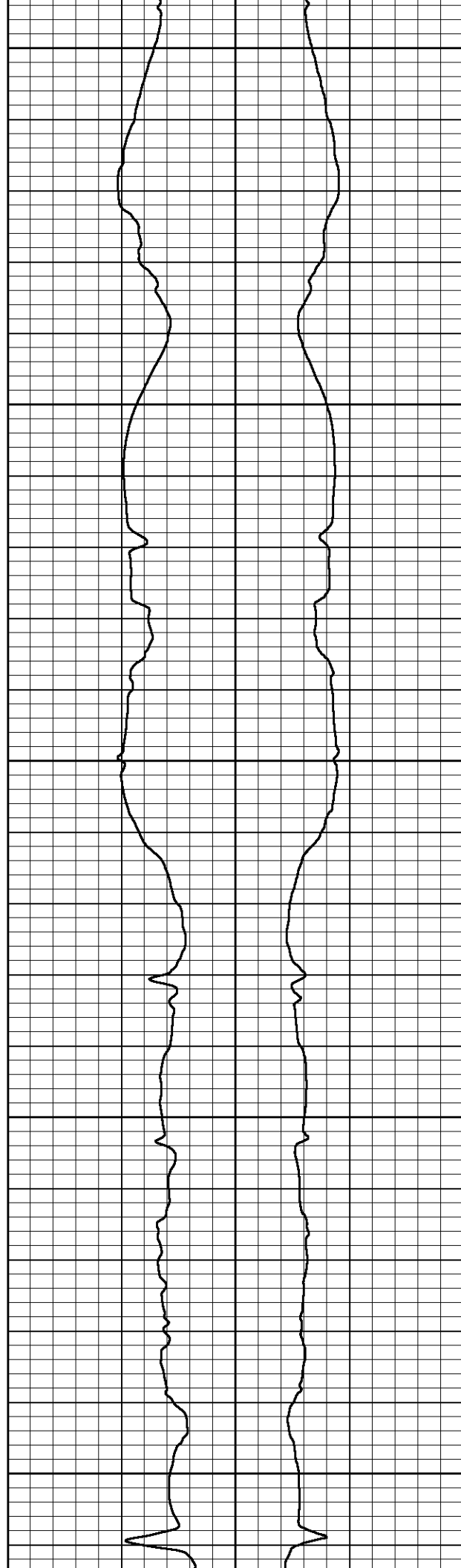
1100

1150

1200

1250

1300



550.30

522.59

492.31

468.51

446.55

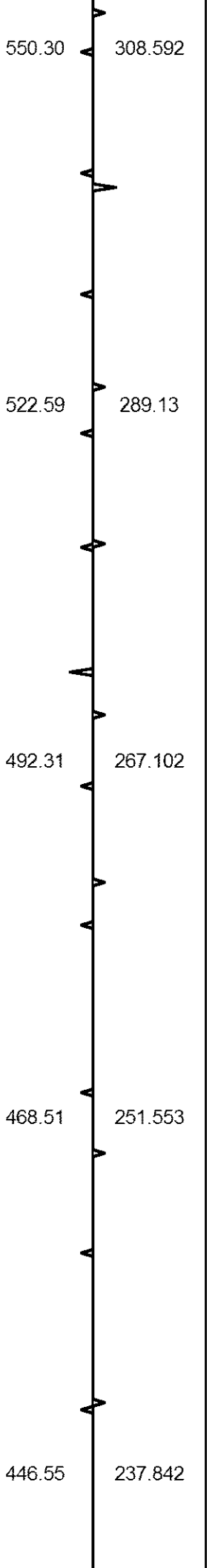
308.592

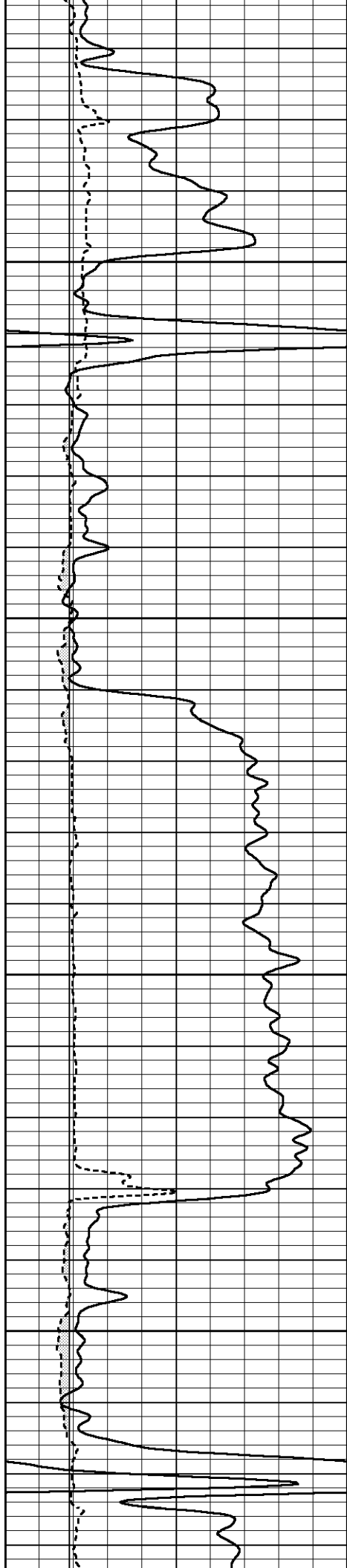
289.13

267.102

251.553

237.842



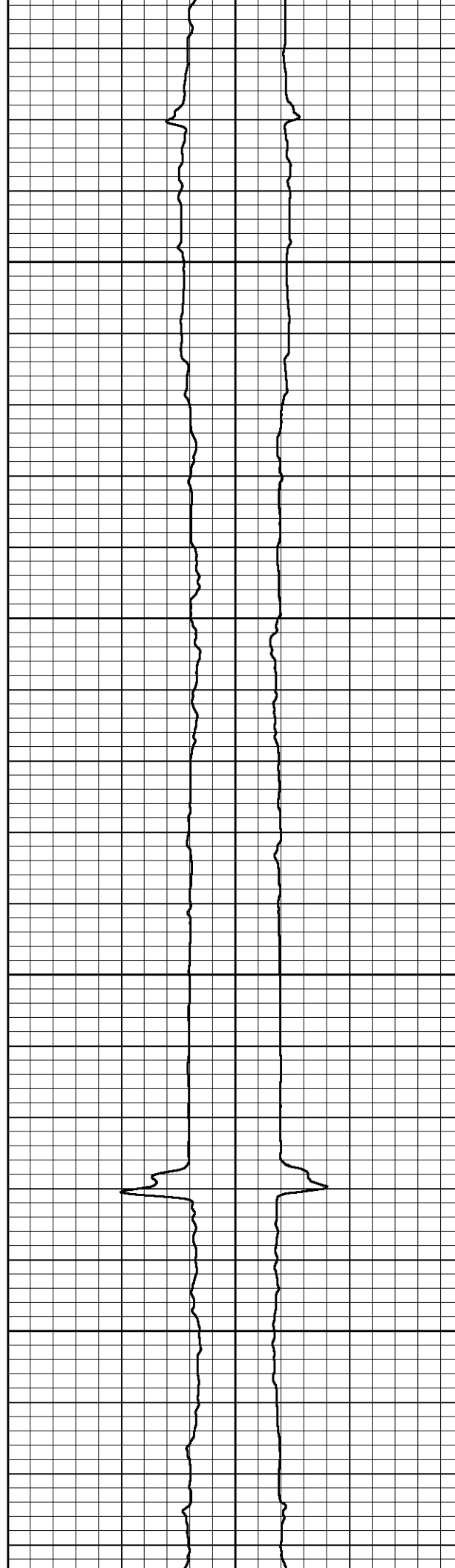


1350

1400

1450

1500



427.11

409.59

392.61

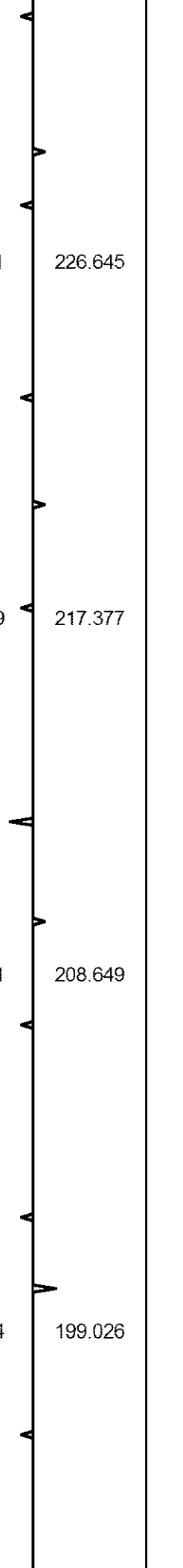
374.74

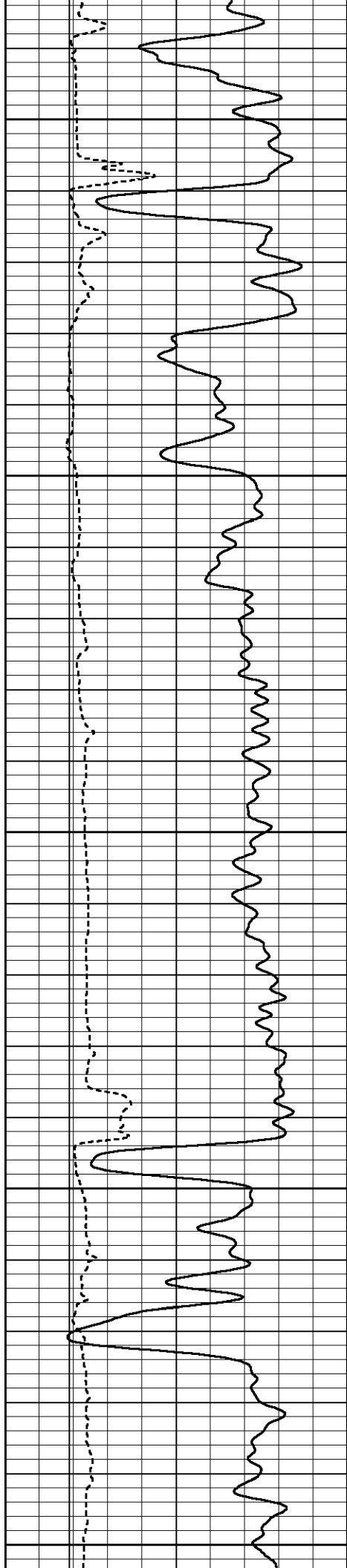
226.645

217.377

208.649

199.026





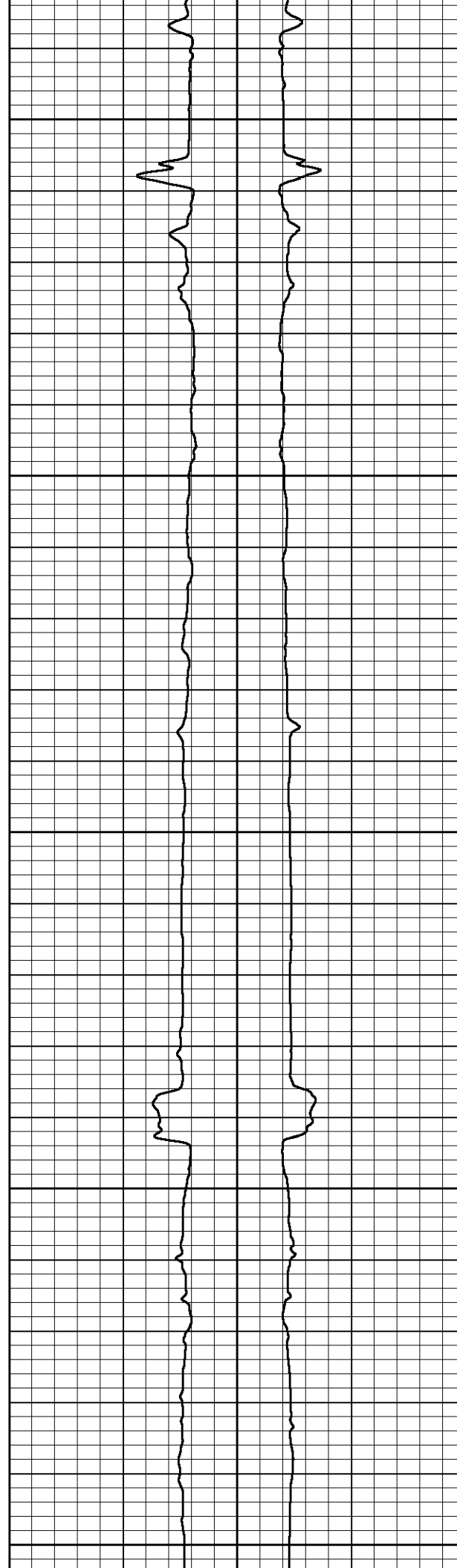
1550

1600

1650

1700

1750



357.45

339.14

320.70

300.88

281.87

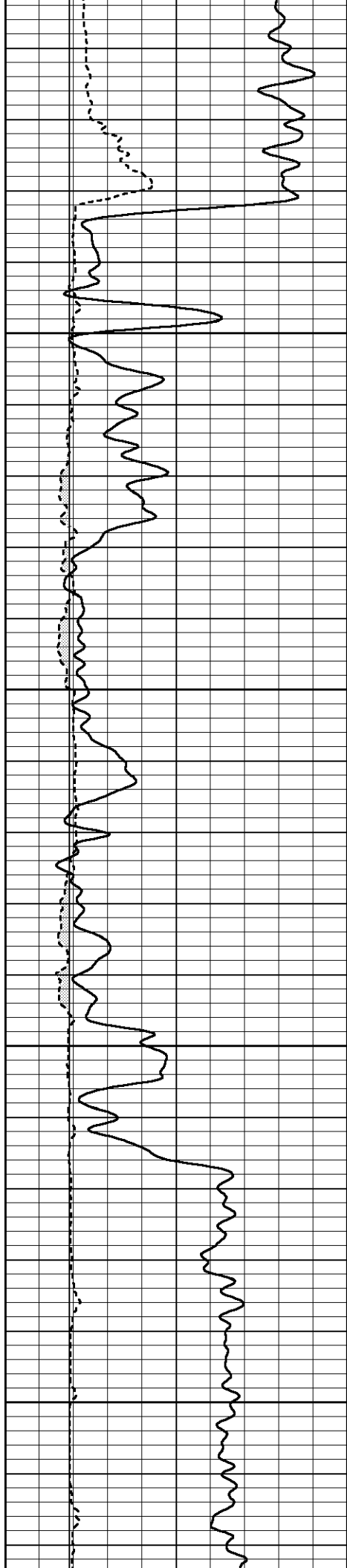
189.988

179.926

169.734

158.168

147.402

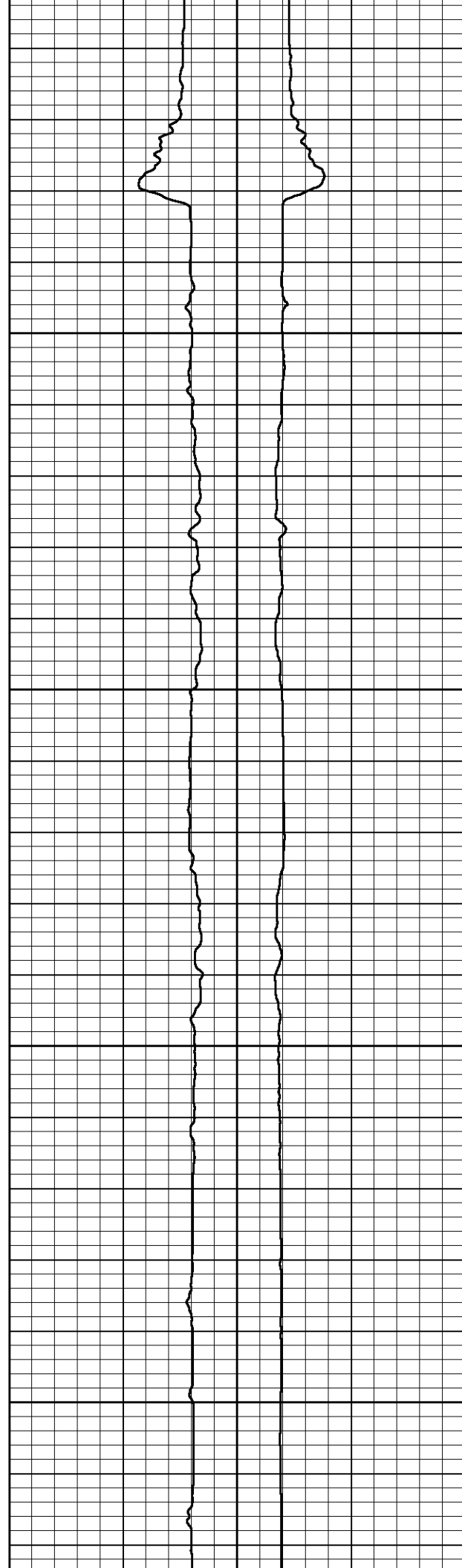


1800

1850

1900

1950



262.04

245.35

228.41

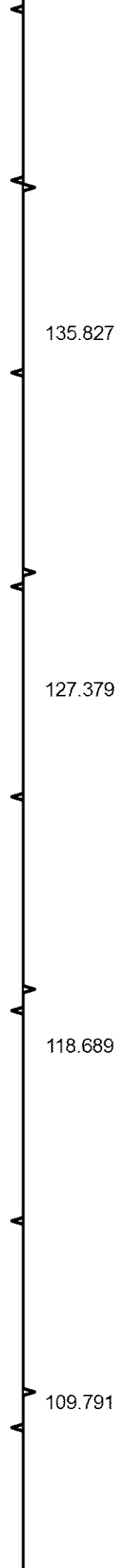
211.26

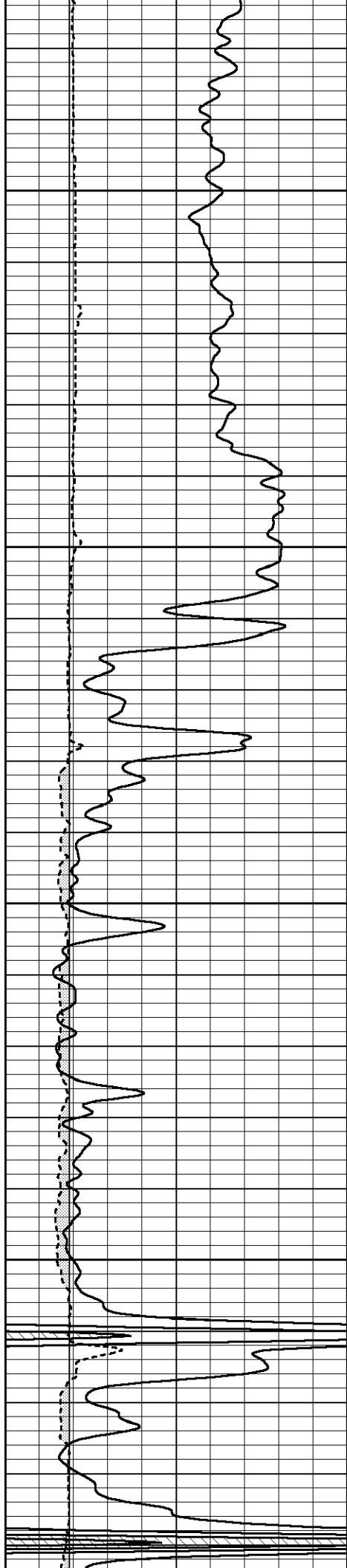
135.827

127.379

118.689

109.791



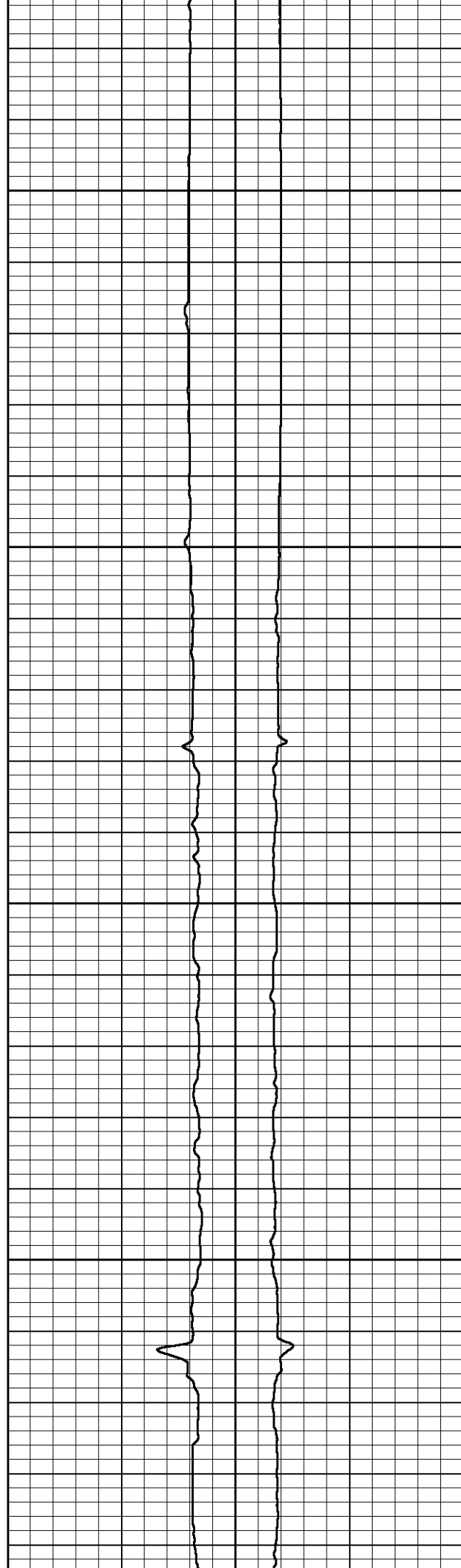


2000

2050

2100

2150



193.93

176.29

159.67

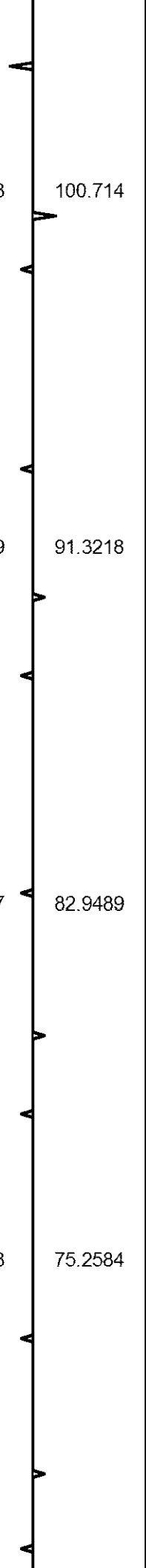
143.73

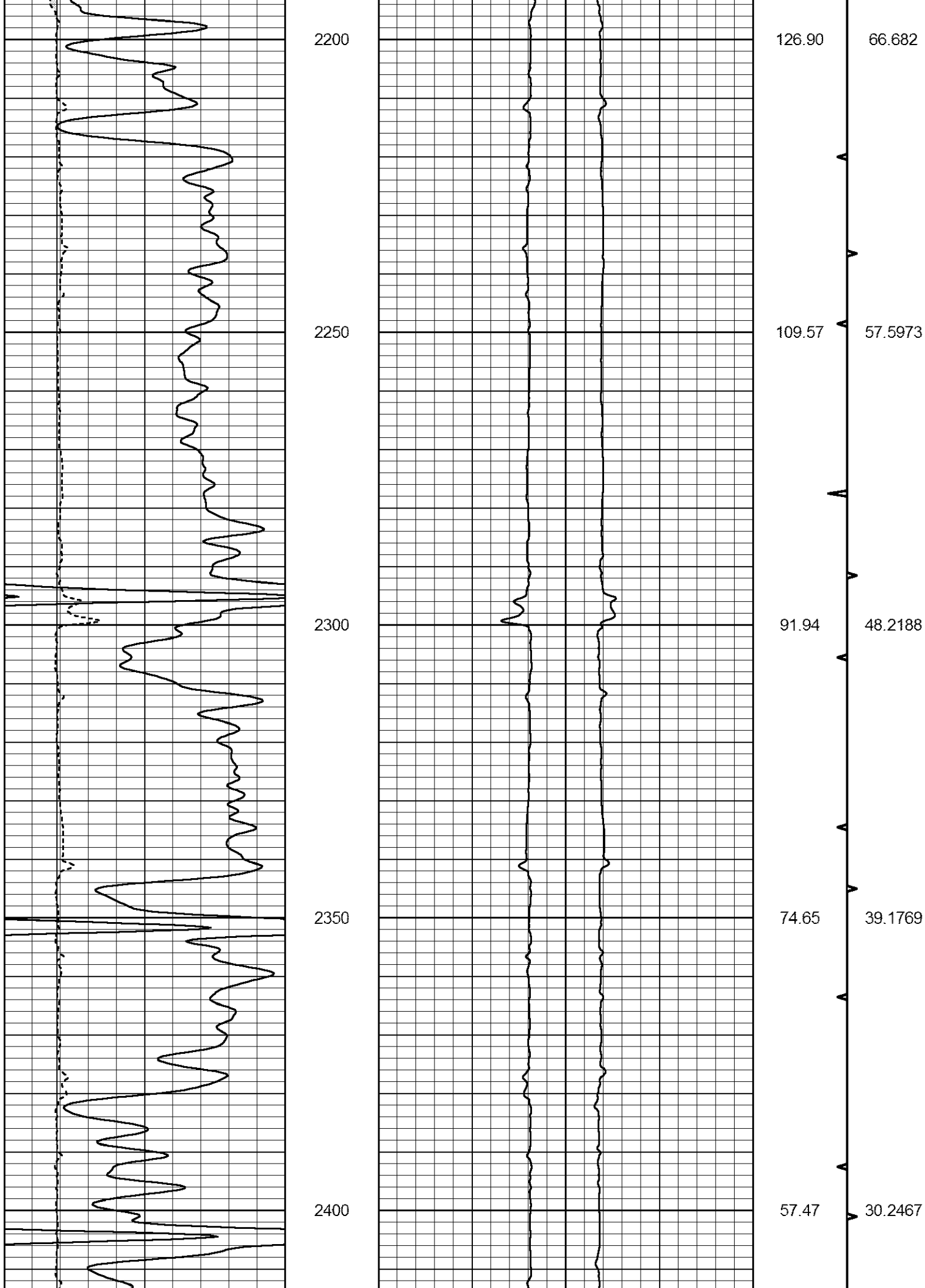
100.714

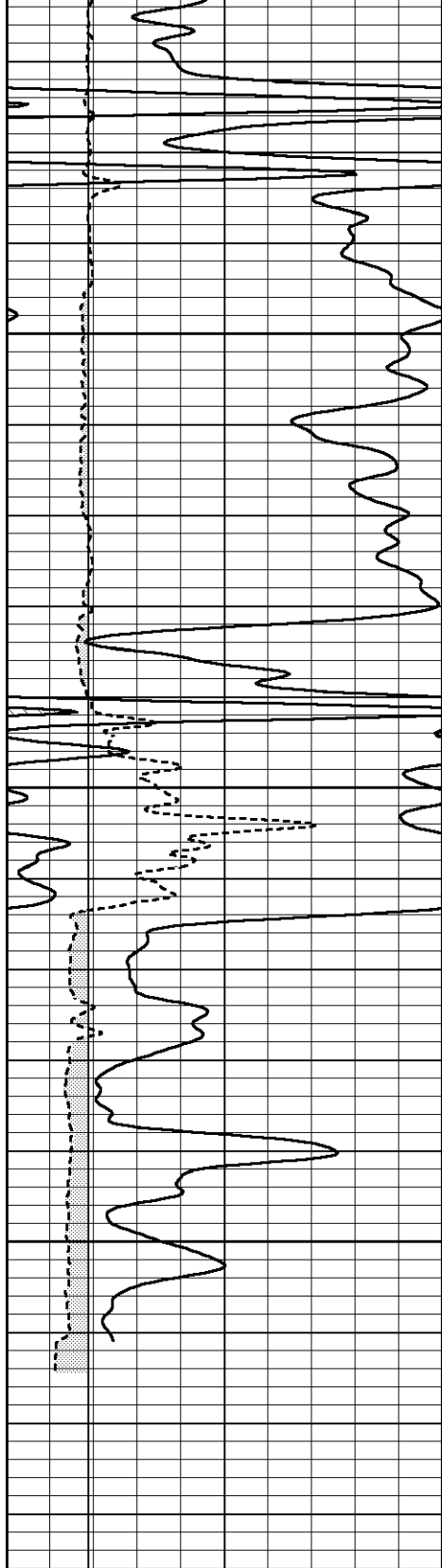
91.3218

82.9489

75.2584





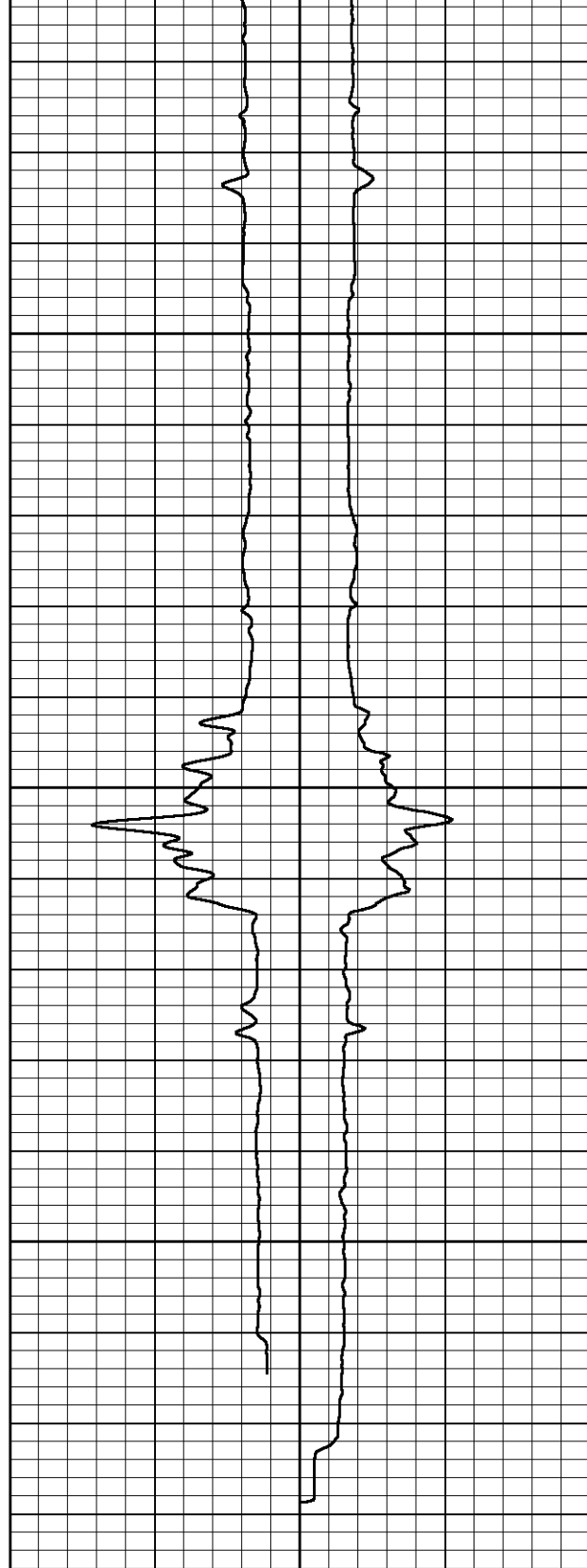


2450

2500

2550

0	GR (GAPI)	150
6	CALIPER (in)	16



16	MELCAL (in)	6	6	DCAL (in)	16
16	CALIPER (in)	6			

40.45

23.13

4.41

BVTX	AVTX
10 (ft3) 0 0	(ft3) 10
TBHV (ft3)	ABHV (ft3)

21.4765

12.4074

1.93577